

# Dude Ranches









# Dude Ranches Out West



*Issued By*  
UNION PACIFIC









# Dude Ranches Out West

*See page 56 for index to Ranches and Resorts*

"Dude Ranch" is not an expression that carries a clear-cut meaning to everyone, for a dude ranch is neither a summer hotel nor a farm where dudes "ranch."

In the West every farm is a ranch; they vary in size, too, from the small ranch to five or ten thousand acres, and, in the case of some of the stock and grain ranches, even larger.

Most of the ranches are in settings of appealing beauty with mountains, lakes and streams in their very yards, or at least close by. Their hospitality is far more genuine, spontaneous and personal than that of an ordinary summer resort. Theirs is a heritage that is genuinely American.

Many eastern families have for years been spending their vacations at these ranches, riding in Western cowboy saddles, hiking, fishing and hunting in the real Western outdoors. Visitors or guests at the ranches are honorably referred to as "dudes," hence "dude ranches"—a ranch where "dudes" are entertained. The rancher is a "dude wrangler." He, his cowboys, and the rest of his business associates are the "outfit."

Each ranch has its "brand" which is a letter, insignia or often the initials of the owner. It is a mark which is "branded" or burned into all the stock on the ranch. In the early days changing brands on stolen cattle developed into a fine art with cattle thieves who were dealt with on the spot if caught. Today the brand is not only to distinguish the stock of the ranch which roam the open ranges and often mix with stock from other ranches, but it serves as the trade mark as it were of each particular dude ranch. It is used as a decoration on linen, chinaware and frequently as a decorative motif.

In the Union Pacific dude ranch regions may be found dude ranches of every description, with all degrees of comfort and accommodations. Some ranches are equipped with cabins having hot and cold running water and bath tubs, others with pitcher and basins and portable bath tubs. Some have large dining pavilions with white-coated colored waiters, others dine their guests or "dudes" in their own home at a large table, "family style."

The "dude wrangler" tries to select congenial guests who love the out-of-doors. Most ranches ask for references and investigate them carefully. Many "dudes" stay for weeks, and if not congenial or sociable with other guests they would not enjoy their own vacation nor would the others.



WHAT TO EXPECT. Most of these "Dude Ranches" offer simple comforts and a choice of rugged outdoor exercise or quiet relaxation in beautiful scenic country; not elaborate superfluities and country club social activities. Read the folders issued by them. Some offer more refinements than others.

WHAT TO WEAR. Felt hats, wool shirts, khaki trousers or riding breeches, puttees and heavy walking shoes are about right for ranch life. Those planning pack trips to higher altitudes should have warm underwear, sheepskin jackets, sweaters, gloves, etc. Keep in mind the cold nights, the warm mid-day sun, possible rain and snow, and outfit accordingly. Informal attire for evening dances or bridge is in vogue. Some ranches say "wear anything." The popular "Levis" (overall pants) and western boots may be purchased at many ranches.

One has to make advance arrangements too, for the reason that guests return year after year and often make reservations for next year before going back home. They feel that way after one dude ranch vacation. People find at their favorite ranch the ideal conditions for the sort of vacation they term perfect. Then, too, the ranch is the rancher's home—his guests become fast friends to a surprising degree.

Many of the dude ranches served by Union Pacific lines are in Wyoming—in Jackson Hole and the adjacent territory, or in the southeast, near Laramie and Cheyenne. Jackson Hole, the old Western name of the Snake River Valley, is just south of Yellowstone National Park and east of Grand Teton National Park. Once reputed to be the secluded refuge of outlaws and cattle "rustlers," it is now known as one of the best fishing and hunting regions, and one of the most beautiful, scenically, in the country. It is a strip of lovely semi-wilderness, 65 miles long and 10 to 20 miles wide, fringed by huge forests and hemmed in by mountains. There are no poisonous snakes in Jackson Hole.

*Drought is unknown* in this sheltered and favored region of many lakes and streams. Regardless of conditions elsewhere in the West, dudes may rest assured that ideal conditions will be found in Jackson Hole. Some dudes are coming to Jackson Hole as early as June and many others are extending their stay through September. In September the days are usually warm and sunny and the nights invigorating, the mountains are never more beautiful and the colorful aspens make this month a most enjoyable one.

Jackson, retaining much of the frontier atmosphere, yet equipped with all the essential conveniences of civilization, and Moran, on beautiful Jackson Lake, are the principal towns. There is an excellent hospital in Jackson, with X-Ray and operating rooms, and a skilled surgeon and staff.

Genuine western rodeos are staged every summer at Jackson and Wilson. The Wilson rodeo and stock show, the third Friday and Saturday in August, is non-professional at which riders from the various ranches compete.



The Jackson Hole ranches are reached via Union Pacific to Victor, Idaho, thence by ranch auto; also via Union Pacific to Rock Springs, Wyoming, thence by auto stage through Pinedale; or through Yellowstone Park via West Yellowstone, Montana, gateway.

Teton Transportation Co. maintains daily bus service June 1st to September 30th, between Victor, Idaho, and Teton Lodge, Moran, Wyoming.

West Yellowstone, Montana, is also the gateway to several fine ranches in southwestern Montana.

There are many friendly ranches, too, on the great Laramie Plains, nestling at the base of the Medicine Bow Range, and looking southward upon the blue mountains of Colorado, northward over the Continental Divide.

Other fine ranches are located in the wilder portions of the Colorado mountains; in the wild and rugged country of central Idaho; in the Blue and Wallowa Mountain regions of Oregon; near interesting Reno, Nevada; and on the picturesque Mojave Desert, or in mountain regions of California. Most convenient Union Pacific stations are mentioned.



*This is the brand of the Dude Ranchers' Association, address Billings, Montana. It appears in this booklet next to those ranches that were members of the Association at the time booklet was issued.*



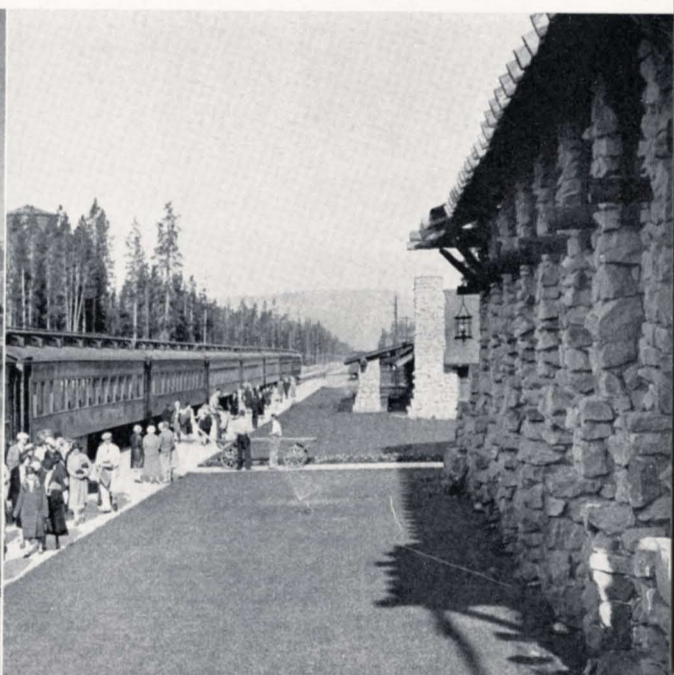
*This is the brand of the Colorado Dude and Guest Ranch Association, address Park Lane Hotel, Denver, Colorado. It appears next to those ranches that were members of the Association at the time this directory was published.*

**The Union Pacific believes its statements, as set down herein and verified as far as possible, to be reliable; but it cannot guarantee them, as it has no part in the management of these ranches. Persons interested should correspond in advance with the dude ranch managers.**

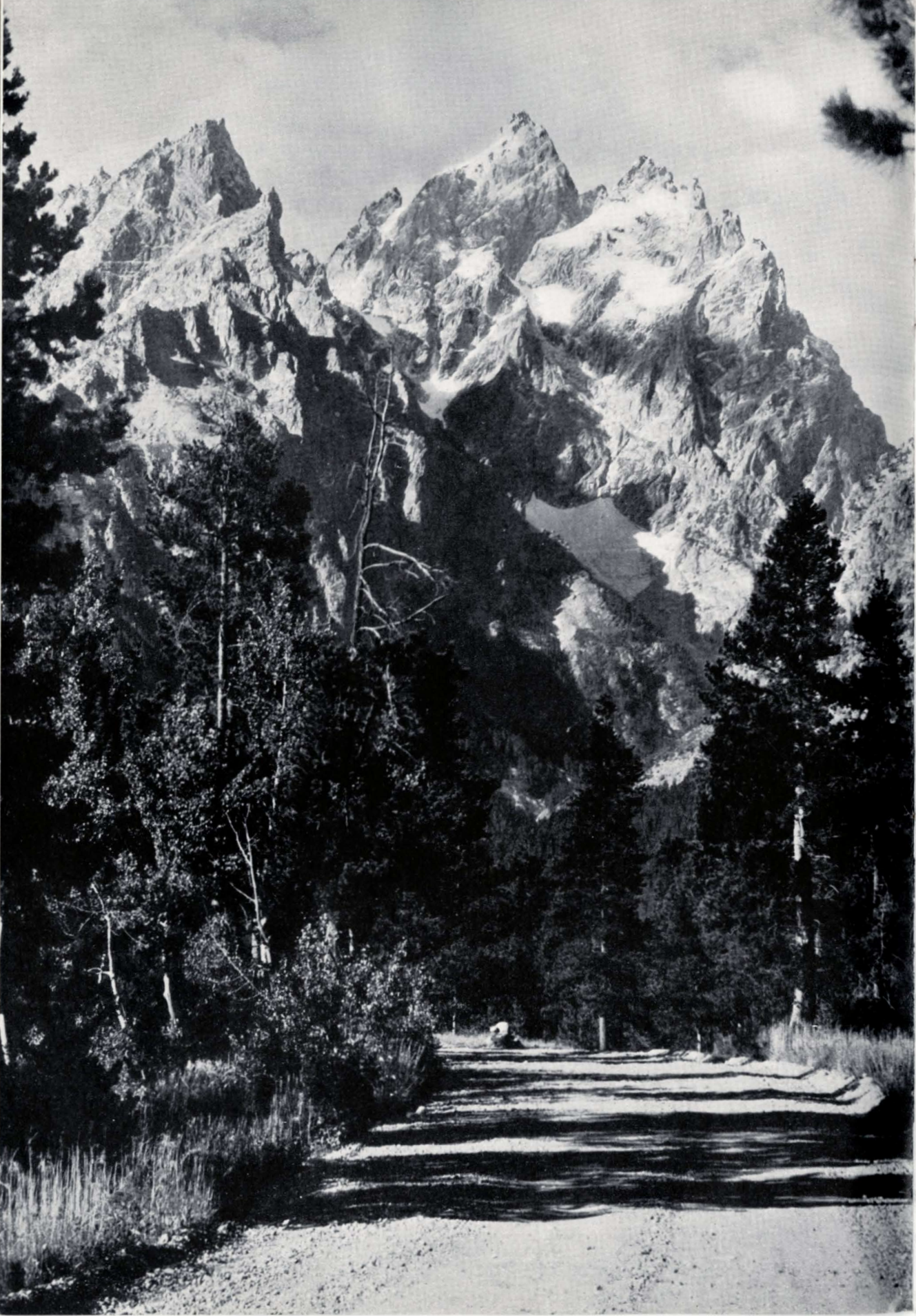
*The illustrations in this book were selected to show dude ranch accommodations and activities in general. In addition to pictures taken by our own photographer we are grateful to various ranches and to the following photographers for their cooperation: Crandall Studio, Grand Teton National Park, Wyoming; C. V. Ager, La Grande, Oregon; and Frashers Inc., Pomona, California.*

*Teton Transportation Company Bus Meets Union Pacific Train at Victor, Idaho, Gateway to Grand Teton — Jackson Hole.*

*Dudes Arriving West Yellowstone, Montana, Union Pacific Gateway to Yellowstone National Park and Near-by Ranches.*









# Jackson Hole Ranches

*The famed Jackson Hole region in northwestern Wyoming borders Yellowstone on the north and extends to Jackson Lake and Grand Teton National Park on the west. Truly a land of great scenic masterpieces, where drought never comes, reached from the Union Pacific rail gateways of Victor, Idaho and Rock Springs, Wyo.*

## ASPEN RANCH

**Location:** On Snake River, with  $\frac{3}{4}$  mile river frontage, and about one mile from the Teton mountains. Fourteen miles from Jackson, and 30 from Victor, Idaho. Guests can be met either at Victor or at Rock Springs, Wyo. about 200 miles, the nearest point on the main line of the Union Pacific.

**Accommodations:** Limited to twelve guests. The main ranch house has large living room, dining room, library, as well as owners' and superintendent's quarters, kitchen, etc. Two one-room and two two-room cabins. All rooms large, attractively furnished, and each with its own bath and dressing-room. Electric lights, driven wells, and modern sanitary system. All buildings are of logs, and built during the summer of 1936. Open all the year.

**Activities:** Riding, fishing, mountain climbing, big game hunting, camping, and related sports. Great care has been used in the selection of an excellent string of saddle horses. Pack trips during the summer or the hunting season may be arranged.

**Rates:** On application. References required and given. Write, Paul T. Colbron, Wilson, Jackson Hole, Wyo.

## BAR BC RANCH *Brand*

**Location:** Opposite Grand Teton, on bank of the Snake River, two miles from main Yellowstone Park motor road, 18 miles from Jackson and 45 miles from Victor, Idaho, the nearest railroad point.

**Accommodations:** Thirty-five rooms in comfortable log cabins accommodate 50 guests. Central bath house with tubs, showers and abundant supply of hot and cold water; large swimming pool; excellent sanitation. Ranch has its own dairy cows, ice house and beef herd; fresh fruits and vegetables served daily.

**Activities:** Horseback riding is a basic sport. Pack trips arranged, with guide, cook and horse wranglers, also hunting parties in season, with guides who have been with the ranch since 1912. The charm of the Bar BC, one of the oldest and best known ranches in Jackson Hole, lies in its simplicity, and the fact that the management endeavors to secure a congenial group of people who want the casual and informal life which the ranch offers. All necessary comforts are provided, but luxuries are neither expected nor desired.

**Bar BC J-O Junior Outfit:** Owned and managed by the Bar BC, affords parents an opportunity of being with their sons, while giving each boy the advantage of a Westerner's life with fellows of his own age.

**Rates:** On application. Rates vary depending upon length of stay and accommodations required. They include exclusive use of saddle horse, laundry, etc., there are no extras. Pack and hunting trip rates depend upon number in party and length of time out. Guests met at Victor and conveyed to ranch for a charge of \$10. References required. Write to the Bar BC Ranch, Moose P. O., Jackson Hole, Wyoming, for information about reservations, or from March 15 to June 1, Irving P. Corse, Whitemarsh, Pa.

## BEAR PAW RANCH *Brand*

**Location:** In a section of Jackson Hole, northwestern Wyoming, noted for its spectacular beauty. Close to the Snake River with the Teton Mountains in immediate foreground. Guests met by appointment at Union Pacific Station, Victor, Idaho.



## BEAR PAW RANCH (continued)



*Accommodations:* Limited to 16 guests. A private ranch opened to guests for first time in 1936. Ranch buildings are built of peeled logs. They comprise: a main cabin, with large dining room, three two-room cabins with bath; two large one-room cabins. Each cabin equipped with twin Simmons beds, rugs, wood stove and soft warm blankets. Food is well prepared; fresh ranch products, chickens and fresh meats, fresh fruit and wild game in season.

Ranch is in charge of Mr. and Mrs. Jack Neal, both westerners who have operated the ranch for years. Mrs. Neal is a trained nurse and Jack an excellent horseman and guide.

*Activities:* Riding, fishing, swimming, mountain climbing, camping and motoring. A horse and equipment is assigned to each guest. Horses are safe, well broken and "bridle wise." Big Game hunting in season; guaranteed shots at elk, moose, and bear. Arrangements may be made by guests for pack trips for parties of 4 to 8.

*Rates:* \$10 to \$12 per day, including saddle horse and equipment, depending on accommodations and length of stay. References required and exchanged. For reservations and further information—write: Coulter D. Huyler, Round Hill, Greenwich, Conn. During summer: Bear Paw Ranch, Wilson, Wyoming.

## CRESCENT H RANCH *Brand* (E)



*Location:* Four miles south of Wilson, Wyoming, and 24 miles from Victor, Idaho, nearest Union Pacific point; bounded on the east by the Snake River, on the west by Teton National Forest. Superb view of the Grand Teton. Guests met at Victor, Idaho, or Rock Springs, Wyoming.

*Accommodations:* Large combination dining and recreation hall, electrically lighted, with modern kitchen; laundry, bath house with hot and cold showers. Substantial log cabins, tastefully furnished, accommodate 30 guests. All buildings on well-timbered land.

*Activities:* Horseback riding, hiking, hunting, mountain climbing. Especially fine trout fishing, three miles of mountain streams on ranch property, reserved for guests. Packhorse trips to Grand Canyon of the Snake River and other points of interest. Large and small game is plentiful. Big-game hunters accommodated in season (September 15th to November 15th). Rates on application. Summer season, June 15th to September 15th.

*Rates:* All rates on application. Exclusive use of horse and saddle included. Pack trips extra. References required. Write E. G. Brown, Crescent H Ranch, Wilson, Wyoming, or Eastern representative, Joe Ramsey, Caxton Bldg., Cleveland, Ohio.

*A calf takes the iron while  
anxious mother and dudes look on.*





## DOUBLE DIAMOND RANCH *Brand 8*

*Location:* Seventeen miles north of Jackson at the base of Grand Teton, between Cottonwood and Taggart Creeks. 75 acres. Borders portion of Grand Teton National Park. Take Union Pacific to Victor, Idaho.



*Accommodations:* Cabins and tent houses for 25 adults or boys. Large cabin for eating and lounging. Ranch has its own fresh vegetables, milk and cream.

*Activities:* Life on a Western ranch, with pack trips in Tetons and big game country of Jackson Hole under the supervision of experienced guides. Riding, fishing, and swimming. Selected saddle horses are maintained for use of guests at any time.

*Rate:* \$35 to \$45 a week including use of saddle horse. References required and given. For reservations write Frank R. Williams, Double Diamond Ranch, Moose P. O., Wyo., or until June 1 write L. O. Williams, 21 Wendell Street, Cambridge, Mass.

## GROS VENTRE RANCH *Brand 8*

*Location:* Near the South entrance to Yellowstone Park, in the famous Jackson's Hole country. On the South bank of the Gros Ventre River across the valley from the Teton Range of mountains. The nearest railroad, at Victor, Idaho, is 45 miles; and Rock Springs, Wyoming, on the Union Pacific main line, is 200 miles from the ranch. Ranch car meets guests at either station by appointment.



*Accommodations:* Well constructed log cabins accommodating 20 recommended guests. Main group of buildings on bench overlooking swimming pool. Separate one, two, and three room sleeping cabins, conveniently located in timber to insure privacy and comfort. Simmons Beautyrest mattresses on each bed and genuine Navajo rugs in each room. Some cabins have private bath; for those not so equipped there is a central two-room bath house with tubs and showers. Substantial and well prepared ranch meals. This ranch is producing cattle and horses. Daily mail, telephone service, and ranch store.

*Activities:* Riding is the principal activity. Others include: swimming, in a pool supplied by natural springs; excellent fishing at our door; hiking, mountain climbing, summer pack trips, and hunting trips in season; all kinds of winter sports. Big game may be seen and photographed in their natural habitat.

*Seasons:* Summer—May 1st through September 15th. Fall Hunting—September 15th through November. Winter Sports—December 1st through April.

*Rate:* On application to David Abercrombie, Gros Ventre Ranch, Kelly, Wyoming.

*Just Loafing is an Art and Fun — On the Ranch.*





## TRIANGLE X RANCH *Brand* ▽

*Location:* In the famous Jackson Hole. The ranch is 26 miles from the town of Jackson and 36 miles south of Yellowstone National Park. Magnificent view of the valley, the winding Snake River and the spectacular Teton Range. Guests met at Union Pacific station, Victor, Idaho, by appointment.

*Accommodations:* Large log cabins, cozy and rustic, accommodate about 30 guests. Toilet facilities convenient to each cabin. Ranch has its own garden, dairy herd and poultry. Spacious dining room faces the Teton Range.

*Activities:* All the activities of a western ranch plus those of any eastern camp. There are horses and cattle to be rounded up, to be roped and branded.

Riding is diversified; not only daily outings, but horseback games, picnics, swimming parties to one of the nearby lakes. Pack trips into the mountains supervised by thoroughly experienced and licensed guides. Hiking and mountain climbing with a camera lends a new thrill because of the profusion of wild game, elk, deer and moose. Trout fishing on the river or from our motor boat on Jackson Lake. Two rodeos at Jackson. Other features include a swimming pool, baseball, rifle range, archery, basketball, volley ball, and fencing, all under competent instruction.

*Rates:* On application. Write Charles M. Shapp, 2018 E. 12th St., Brooklyn, New York—or Triangle X Ranch, Grovont P. O., Jackson Hole, Wyoming.

## WHITE GRASS RANCH *Brand* H-B



*Location:* Twenty miles from Jackson and 50 miles south of Yellowstone; contains 360 acres. Secluded from highway by 5 miles of pine forests, yet easily accessible. Altitude, 6,500 feet. Nearest rail station Victor, Idaho, on Union Pacific.

*Accommodations:* The log cabins, at the foot of the majestic Tetons, near Death Canyon, accommodate about 35 guests. Swimming pool; excellent table. Shower baths and toilets conveniently located.

*Activities:* Riding, fishing, swimming, hunting and hiking. Each guest has his own saddle horse. Hunting trips and summer pack trips arranged. A permanent, fully equipped hunting camp is maintained for big-game hunters.

*Rates:* \$70 a week for a stay of a month or more. Transportation, Victor to the ranch, \$10 a person. Personal references furnished and requested. Write to Harold R. Hammond, White Grass Ranch, Moose P. O., Jackson Hole, Wyoming.

*Mt. Moran and Tetons across Jackson Lake, Jackson Hole, Wyoming*





# Wind River—Green River Ranches

## CL BAR GUEST RANCH *Brand* CL

*Location:* In western Wyoming, along the scenic south entrance to Grand Teton and Yellowstone National Parks, 10 miles northwest of Pinedale. Wind River Range on the east. Guests met by appointment at Union Pacific Railroad station in Rock Springs, Wyoming; no charge for transportation on 4 weeks' bookings.

*Accommodations:* A rambling, twenty-room ranch house with an atmosphere of comfort; log guest cabins, modern, electrically lighted, each with open fireplace. Real Western meals. Well-cared-for grounds. Over all a spirit of hospitality.

*Activities:* Swimming, hiking, mountain-climbing, fishing, hunting, riding—a few short miles into wild, primitive country where fish and game abound. All-day camp trips to near-by lakes; pack trips or auto trips into Teton or Yellowstone country easily arranged.

*Rates:* \$50 per week. Special rates made for guests staying four weeks. Transportation to and from Rock Springs for guests staying four weeks. Until June 15 write Mrs. E. S. Lauzer, Rock Springs, Wyo.; from June 15 to Dec. 1st, ranch address Cora, Wyo. References exchanged. Daily mail.

## CM RANCH *Brand*

*Location:* On the J. K.'s Fork of the Big Wind River, 6 miles from Dubois, Wyoming; altitude, 7,000 feet. Across Continental Divide from Jackson Hole, and southeast of Yellowstone National Park. Five hours' ride by automobile from Rock Springs or Rawlins, Wyoming, on the Union Pacific, guests met by appointment.



*Accommodations:* Comfortable log buildings. Modern kitchen and dining room, large central living room with fireplace; separate sleeping cabins of one, two or three rooms each. Central bath house with tubs, showers and abundant hot and cold water. Abundant, appetizing and well served meals; ranch has its own dairy herd, chickens, vegetable garden and ice house. Telephone and telegraph service, and daily mail.

*Activities:* Horseback riding, fishing, climbing, swimming, big-game hunting in season, and pack trips through the scenic surrounding country. Exceptionally fine trout fishing at the ranch and in near-by streams and lakes. Mountain camp at Simpson Lake, on the Continental Divide. Pack trips for groups of boys and groups of girls. Ranch is open in the winter; fine opportunities for winter sports in the mountains. Ranch owner and manager, Mr. Moore, is a native of Wyoming, a licensed Yellowstone and Wyoming guide.

*Rates:* On application. Write to Charles C. Moore, CM Ranch, Dubois, Wyoming. References exchanged. Winter address: % City Club, 55 W. 44th St., New York City.

## CIRCLE S RANCH *Brand*

*Location:* In the Upper Green River valley, 20 miles from Cora, Wyoming and about 135 miles from Rock Springs, Wyoming. Guests are met by appointment at Union Pacific station in Rock Springs, Wyoming. No charge for transportation to the ranch.



*Accommodations:* The ranch consists of 320 acres located in the valley. The ranch lodge is a log structure containing the kitchen, dining room, and living room. Single and double log cabins are located around the lodge. A central bath house has hot and cold running water. Telephone and telegraph service. Real western meals.







## CIRCLE S RANCH (continued)

*Activities:* Each guest is assigned a horse and daily trips are taken to surrounding points of interest. Trout fishing is excellent. Big game is found in the Wyoming National Forest which surrounds the ranch. Hunting parties are outfitted in season. Wonderful opportunities for the camera enthusiast and especially for good movie shots. The largest glacier field in this country is located at the foot of Gannett Peak. These glaciers may be seen from different points along the trails leading from the ranch. One may watch the cowboys in their work of riding, roping, and branding as it was in the days of the old west. The old chuck wagon is still in use and thousands of cattle are run on the open range in the National Forest.

*Rates:* The rate for ranch guests is \$35 per week. \$65 for two weeks, \$125 for a month. Rates include use of private saddle horse, all meals, lodging, general guide service and transportation to and from Rock Springs. Rates for fishing and hunting parties and pack train trips will be furnished on request. They vary, depending on the number in the party and the length of time out. All reservations for accommodations must be made in advance. Address: W. H. Showers, manager, Circle S Ranch, Cora, Wyoming.

## DC BAR RANCH *Brand* ®

*Location:* 760 acres in the Upper Green River Valley, 30 miles from Cora, Wyoming, and about 140 miles from Rock Springs, Wyoming. Union Pacific guests met at Rock Springs, Wyoming. Transportation to ranch \$10 per person one way.

*Accommodations:* Ranch house, with living and dining rooms. Comfortable log cabins. Green vegetables, fresh milk and eggs. Buildings in an aspen grove, near a clear, cold mountain stream.

*Activities:* Riding, mountain climbing in Wind River Range, fishing trips to lakes and streams in surrounding mountains; swimming. Bear, moose, elk and deer are plentiful. Fall hunting opens October 1st. Pack trips can be arranged to lakes otherwise inaccessible.

*Rates:* \$50 a week for a period of two weeks or less; \$45 a week for a period of two weeks to four weeks; \$40 a week for a period of four weeks or more. Write Mr. and Mrs. Richard Dew, Cora, Wyoming.

## DIAMOND G RANCH *Brand* ♦

*Location:* On Brooks Lake at headwaters of the Wind River, 35 miles from Dubois, Wyoming, a quaint western town. Serenely remote in its Rocky Mountain fastness yet easily accessible. Ranch car will meet guests by appointment at Union Pacific station, West Yellowstone, Montana. Or take Union Pacific to Victor, Idaho, and Teton Transportation Co. bus to Moran, Wyo., where ranch car will meet you. These routes via Union Pacific will enable you to see Yellowstone Park or Jackson Hole and Grand Teton National Park, or all, enroute to and from ranch.



*Accommodations:* Rustic log ranch house with dining room and spacious lounges. Commodious cabins with excellent beds, bath, to meet a diversity of requirements. Pure, soft mountain water. Choicest of foods.

*Activities:* Major activity is riding, mounts suited to personal preferences and needs. Daily cavalcades fare forth from the ranch under guide of skilled cowboys. Excellent equipment for pack trips. Unexcelled trout fishing. Annual rodeos at Dubois and Jackson are genuine western stuff. Near Dubois guests may visit reservations of the Arapahoe and Shoshone Indians, whose tribal dances are something to write-home-about. Bird and Big Game Hunting in season. Informal ranch life.

*Rates:* Cover room, meals, service, general guidance, and exclusive use of saddle horse. Rates depend on accommodation required, length of stay, and number in family or party. References and reservations required. For brochure write Foster S. Scott, Diamond G Ranch, Dubois, Wyo.



## FLYING A RANCH *Brand* ☆

*Location:* On Little Twin Creek, at edge of National Forest Reserve, about 145 miles north from Rock Springs, Wyoming, 30 miles north of Daniel.

*Accommodations:* Log cabins for two or four guests each, scattered along edge of pine timber and at a convenient distance from large recreation and dining lodge. Bath house on the creek. Ranch has its own fresh milk and cold spring water. Fresh eggs, vegetables and meat.

*Activities:* Saddle horse assigned to each guest. Excellent trout fishing. Beautiful country for riding or hiking. Special pack trips to mountain lakes. Hunting and swimming.

*Rates:* On application. Write Mr. or Mrs. Frank Dew, Daniel, Wyoming.

## GP BAR RANCH *Brand* ☞



*Location:* "At the End of the Road and the Beginning of the Trail." Wind River Mountains, shore of Green River Lake, on the fringe of Bridger Primitive area of 133,000 acres of natural, unspoiled beauty. Big game in abundance, no hunting (in summer), except with camera; 154 miles by auto road from Rock Springs. Guests met with ranch car, at Union Pacific station, Rock Springs, Wyo., by appointment.

*Accommodations:* Attractive main building and 15 commodious cabins, capacity 35; latest equipment; hot and cold water and electric lights in connection with each cabin. Large bath house, both showers and tubs for cabins without private bath connection. Large dining room and lobby for recreation.

*Activities:* Horseback riding, swimming, boating and unexcelled trout fishing; pack trips to neighboring glaciers and to the points of interest; evenings about camp fire with cowboys; rodeo at ranch, local ranch talent aboard. Big game hunting in season.

*Rates and references on request.* Write to S. D. Decker, Suite 320 Newhouse Bldg., Salt Lake City, Utah; from June 15 to September 15 address ranch at Cora, Wyoming.

## LECKIE GUEST RANCH



*Location:* Near the edge of the Bridger National Forest Reserve on the rippling Big Sandy river with its schools of rainbow trout. The ranch lies snugly in the foothills of the Wind River mountains; one of the few ranches that has retained the atmosphere of the old west. It is ninety miles north of Rock Springs, Wyoming, reached by the Union Pacific railroad. Guests met by appointment at Rock Springs.

*Accommodations:* Main ranch house, with dining rooms, wholesome meals and courteous service. Large recreation cabin with cozy fire place where adults and juniors gather in the evenings for amusement. Delightful library. Comfortable sleeping cabins, tastefully furnished; good single beds and stoves in each cabin; outside bath house. Accommodations for twenty guests. Special care given children without their parents. Telephone and regular mail service. Telegrams can be telephoned direct to ranch.

*Activities:* Horseback trips through the beautiful mountains (gentle horses for inexperienced riders), riflery, hiking, swimming, hunting. The ranch is one of the finest for trout fishing in the west. (Guests wishing to hunt and fish should come fully equipped.) Picnics to beautiful wooded canyons, campfire parties. Special trips arranged.

*Rates:* \$40 per week, per person (two in a cabin). Special rates can be arranged for families and groups staying longer than three weeks. This rate includes a private saddle horse and guide, transportation from Rock Springs to ranch, meals, cabin. References exchanged. Season, June 1 to Oct. 1. Write Mrs. Mary Leckie Roberts, Leckie Guest Ranch, Big Sandy, Wyo.—Winter address: 430 B St., Rock Springs, Wyo.



## TWO N RANCH *Brand* 2

*Location:* Near Dubois, elevation 6,900 feet. Wind River passes between cabins and corrals. Buildings face multi-colored Bad Lands. 3,000-foot rise in elevation going back of ranch three miles. Guests coming via Union Pacific met at Rawlins, Wyoming.

*Accommodations:* Fifteen guests at ranch. Pack equipment for two or three parties in mountains at one time.

*Activities:* Hiking, riding, fishing at ranch with many interesting short trips. Summer pack trips into Wind River and Absaroka Ranges for fishing or sight-seeing, and to Gannett Peak glacial fields. Highest point in Wyoming and largest moving glaciers in United States. Hunting in fall for elk, bear, deer, moose, sheep.

*Rates:* Cabin, meals, and saddle horse at ranch \$40 up per week each. Summer pack trips \$12.50 per day each in party of four or more. Hunting rates, booklet, or information by writing L. O. McMichael, Dubois, Wyoming.

## T CROSS RANCH *Brand* 7

*Location:* On Horse Creek, a tributary of the Wind River, 15 miles north of Dubois, Wyoming; in the Washakie National Forest, and in the heart of the Absaroka Mountains. Reached from Cheyenne or Rawlins on the Union Pacific by ranch car.



*Accommodations:* Main building with living and dining rooms and kitchen. Attractive and comfortably furnished cabins, each with private bath, for a limited number of guests. Meals are excellent, with plenty of fresh vegetables, milk, cream, etc. Telephone and telegraph service.

*Activities:* There is a wide variety of riding, either on the open range or over forested mountain trails. Trout fishing is very good on the stream through the ranch or in several near-by lakes and streams. Ranch is well equipped to handle pack trips and hunting parties.

*Rates:* Further information and rates, write to Robert S. Cox, T Cross Ranch, Dubois, Wyoming; or to Dr. W. E. Barnard, 475 Fifth Avenue, New York City. References furnished and requested.

## Z BAR U RANCH *Brand* Z-U

*Location:* On Willow Creek, bordering the Wyoming National Forest. About 130 miles north of Rock Springs, Wyoming, where guests are met at Union Pacific station.

*Accommodations:* Log cabins for guests, built in an Aspen grove with centrally located ranch house containing homey dining and recreation rooms.

*Activities:* Under an atmosphere of informal hospitality, the summer is spent in riding, swimming, fishing or mountain climbing and pack trips into the high mountains. With plenty of fun going to cowboy dances and rodeos at nearby towns, as well as at the ranch.

*Rates:* \$40 per week, including private use of a saddle horse, and all other accommodations at ranch except personal laundry. Free transportation to and from railroad. Write for pack trip rates and particulars to J. C. Reynolds & Sons, Z Bar U Ranch, Cora, Wyoming.







# Continental Divide and Snowy Range Ranches

## A BAR A RANCH Brand 4

*Location:* A Wyoming ranch—producing Hereford cattle and Anglo-Arabian horses—accommodating fifty guests—in a secluded valley of the Medicine Bow range, with the North Platte river flowing by the corrals. Address: Encampment, Wyoming, 80 miles southwest of Laramie, Wyoming, on the Union Pacific.



*Accommodations:* Comfortably and tastefully furnished cabins, suitable for one to five occupants; electrically lighted and with private bath. Large rustic Round-Up hall, game room, and store. Good food a special feature.

*Activities:* Horseback riding, excellent trout fishing in the North Platte river, and in high mountain lakes, "skeet shooting," swimming in our new concrete pool, and tennis on perfectly equipped courts. Pack trips into the high Sierra Madre range, with its snow capped peaks, placid lakes, rushing mountain streams and flower carpeted valleys. Sage chicken shooting in August—Antelope, Deer, Elk, and other big game fall hunting trips arranged. The life is extremely simple, free and informal, the climate delightful and the whole atmosphere one of clean, healthy activity. September and October guests welcomed. The most delightful time of the year is "Round-up Time." Season, June to November.

*Rates:* Rates and brochure on request. References required. Write Andrew Anderson, or Chas. L. Adam, at Room 405—521 Fifth Ave., New York, N. Y., during the winter months until May—after that address Encampment, Wyoming.

## A BAR H RANCH Brand A—H

*Location:* On the South Fork of the Encampment River 6 miles South of the town of Encampment, Wyoming, 65 miles Southeast of Rawlins adjoining the Medicine Bow National Forest, in a secluded mountain valley at the foot of the Continental Divide and well off the beaten path of travel. Rail point, Rawlins, Wyoming, via Union Pacific Railroad, where ranch cars will meet guests.

*Accommodations:* Attractive Lodge and cabins, all log construction, well furnished, modern fireplaces, hot and cold water, baths, electric lights, Simmons beds, box springs; built for those people, sportsmen and sportswomen, to whom the ordinary crowded vacation spots have little appeal. The A Bar H offers everything that could be desired for an exclusive vacation or a fall hunting trip.

*Activities:* Good fishing, horseback riding, mountain climbing, pack trips, local rodeos, Cheyenne Frontier Days, hunting in season. On arrival each guest is given his own saddle horse (no extra charge).

*Rates:* Reservations limited to 16. Rates will be quoted upon application. Season, June 15th to October 31st. Write or wire A. J. Hogan, P. O. Box 301, Encampment, Wyoming.

## BOYER YL RANCH Brand Y

*Location:* Beautifully situated in the foothills of the Sierra Madre (Rocky) Mountains. Reached most directly via Union Pacific to Parco or Rawlins, Wyoming; or may be reached from Craig, Colorado, on the D & S. L. Ry. Guests met at Parco, Rawlins, or Craig, by appointment.



*Accommodations:* Guests accommodated in the charming rustic ranch house, which has modern conveniences, including electric light and baths, or in log cabins with private bath



## BOYER YL RANCH (continued)



and fireplace. Tarpaulin-covered wagons kept for the few who enjoy sleeping in the open. Ranch gardens, dairy and stock herds, and fish and game in season, provide delicious meals.

*Activities:* This wild and picturesque country affords good fishing and hunting. Excellent Western horses and thoroughbreds for pack trips, riding and polo. Gentle mounts for inexperienced riders. Ranch particularly suited for families and young people.

*Rates:* On request. Owing to limited accommodations and necessity for congeniality, satisfactory references are required. For further information and reservations, write or wire Mrs. J. St. A. Boyer and Sons, managers, Savery, Wyoming.

## ONE-BAR-ELEVEN RANCH *Brand* †

*(Taking a small group of boys, ages 14 to 18 years.)*



*Location:* In a high mountain valley between the Medicine Bow and Sierra Madre ranges of the Rocky Mountains in Southern Wyoming. Two miles from the picturesque mountain town of Encampment. Boys detrain at Rawlins on the Union Pacific where our ranch cars meet them for the 65-mile drive to ranch.

*Accommodations:* A home cattle ranch in operation for many years. Except for the time spent on pack trips the boys are quartered at the ranch, in a roomy "bunk house" equipped with good single beds, electric lights, showers and bathroom. Meals are taken together in the ranch house. Wholesome fresh foods well-cooked and served. Ranch home is social center in evenings. Daily mail service; telephone and telegraph.

*Activities:* Each boy is given a good horse, hand-made Western stock saddle, etc. Rodeos at Saratoga and Encampment and Cheyenne "Frontier Days" may be visited under our supervision. Pack trips into the mountains and forest. Swimming in "old swimmin' holes" in clear mountain streams. Rodeo sports among the boys themselves, excellent trout fishing, swimming, pack trips into the mountains, haying, cow-punching. Adequate supervision with plenty of activity but no set daily routine.

*Rates:* Application for membership in the ranch family will be received after January 1st of each year. Acceptable references required, and in turn will be given. Regular season fee \$350, July 1st to August 20th. Rates for longer or shorter stay on request. Write to Paul B. Holmes, Encampment, Wyoming.

## SKY MEADOWS *Brand* RH



*Location:* Adjoining the Medicine Bow National Forest with lovely views of the snowy peaks. 84 miles west of Laramie, 13 miles from Encampment, Wyo. Union Pacific guests met at Laramie, Wyo.

*Accommodations:* Still pre-eminently the ranch that is a home and not a resort, giving a true picture of the attractions of ranch life as lived by those western born. A large log house, modern for your comfort, western for your enjoyment. Excellent food for your health, from our own garden and dairy.

*Activities:* All are welcome to participate in or watch any and all ranch activities. Always some colts to be broken, cattle to look after, fences to fix that lead over high spots affording wonderful views along with the day's work, trails that lead through cool green timber to more high spots where one can look a hundred miles to other high mountains, or, just "rest."

*Rates:* \$20 to \$35 each per week. Saddle horses \$15 per week. Special rates for groups or families. All ages welcome. Address Mr. and Mrs. Reed Higby, Encampment, Wyoming.



# Montana Ranches

*One may leave Salt Lake City, the hub of the vast intermountain scenic regions, in the evening and reach these fine ranches the next day through the Union Pacific gateways of West Yellowstone or Butte, Montana.*

## CROSS QUARTER CIRCLE RANCH Brand $\pm$

*Location:* On Hebgen Lake on the Upper Madison River, adjacent to Yellowstone National Park; reached via Union Pacific to West Yellowstone, Montana. No charge for transportation to or from ranch.



*Accommodations:* For a limited number of guests. Log cabins with running water, good beds, comfortable lounge; good food, fresh milk and vegetables.

*Activities:* Fishing, riding, boating, pack trips to mountain lakes. Big game hunting.

*Rates:* Furnished on request, which include, besides cabin and meals, a saddle horse, use of boats with guide. Write Bill Martzel, West Yellowstone, Montana.

## ELKHORN RANCH Brand $\mathfrak{R}+$

*Location:* In a beautiful grassy pocket high in mountains, 35 miles from West Yellowstone, Montana. Guests are met and taken to train by ranch car.



*Accommodations:* Forty-five guests accommodated. Family cabins with private bath. Excellent food. This ranch is one of the best-equipped in Montana.

*Activities:* Delightful rides in varied mountain country. Observation of big game in natural haunts. Spirit that of family group. Mr. and Mrs. Miller, or experienced guide accompany guests on trips. Well-trained horses for all. Pack trips and hunting parties in season. Good fishing.

*Rates:* Special rates made for family groups, or guests staying five weeks or longer. Flat rate includes cabin with bath, meals, saddle horse and equipment, and service of guide. Reservations should be made early. Personal references furnished and requested. For further information and rates write Ernest Miller, Elkhorn Ranch, Bozeman, Montana.

## ELKHORN SPRINGS LODGE Brand $\mathbb{Z}\mathbb{E}$

*Location:* In a country of natural mountain beauty and rich in historical romance, 40 miles west of Dillon, Montana. In 1805 Lewis and Clarke passed Elkhorn Springs on their way to the Pacific Northwest. Ranch situated in Grasshopper Valley where genuine cowboys range great herds of cattle, bust broncs, rope and brand calves and other ranch life still exists. Take Union Pacific via Salt Lake City or Pocatello to Dillon, Montana, where ranch car will meet you by appointment.



*Accommodations:* Lodge of rustic log construction blends with natural setting of pine trees. Lodge contains twelve comfortable guest rooms, modern kitchen and dining room, a large living room with inviting easy chairs and glowing fireplace. A friendly, homey atmosphere. Distinctive one to five-room log cabins, some with screened porch and fireplace offer modern accommodations to families and larger groups.

*Activities:* For all, young or old. The Hot Springs draw their pure, hot, non-mineral water from near-by volcanic reservoirs, which is piped into two large plunges and a modern bathhouse. Sanitation is the watchword. After a day in the saddle or a hike, nothing is more refreshing than a dip in this hot water. Fatigue vanishes as if by magic. Fishermen, nature lovers, camera hunters can hike to points of interest, or with competent guides spend days on horseback. Self-activity is more pleasurable than passive watching.

*Rates:* \$40 per week, including transportation to and from Dillon to ranch. References exchanged. For booklet giving details write: Mr. E. E. Hazel, Polaris, Montana.



## HAGGIN-Y/P-RANCH



*Location:* Near Georgetown Lake in Deer Lodge National Forest, in heart of Rockies on the edge of a wonderful wilderness area, about 50 miles west of Silver Bow, Montana, on the Union Pacific. Guests met at Silver Bow with ranch car.

*Accommodations:* Main lodge, with dance floor, lobby, dining room and kitchen. Sleeping cabins secluded from the main lodge to insure privacy and comfort. All buildings new, of sturdy and artistic peeled log construction, equipped with fireplaces and sleeping porches; electric lights. Central bath house. Accommodations for about 20 guests.

*Activities:* Regular ranch work with cattle, rodeos, wild horse and cattle roundups. Horseback riding, good trout and grayling fishing, hunting with Kodak or rifle, mountain climbing (twelve of the highest peaks in Montana and 34 mountain lakes are within a few miles). Reminders of early Montana mining operations and Vigilante days; motor boating and fishing on Georgetown Lake, known the country over as a Fisherman's Paradise. Pack trips arranged on request into the wildest country left in America—an area as large as the state of New York. This country is still unsurveyed and uncharted. "Panning Gold" (placer mining) is our new popular sport. Special—during June and September we maintain a lower rate for groups of 5 or more. Winter Sports in season.

*Rates:* For rates and information, write to Dr. W. L. Beal, Manager, Anaconda, Mont.

## H BAR 9 RANCH *Brand* H-9



*Location:* Horse Butte, 11 miles northwest of West Yellowstone and  $5\frac{1}{2}$  miles from the west boundary of Yellowstone National Park. Private cars will meet Union Pacific guests at West Yellowstone without charge. Owned and operated by T. S. Grace, formerly owner of the now discontinued "Danny Ranch" in Jackson Hole. This is a stock ranch, in the horse and cattle (breeding) business, with accommodations for a limited number of guests.

*Accommodations:* Comfortable log cabins accommodate 12 guests. Ranch has its own garden, dairy, ice house and beef herd. Central, modern bath house.

*Activities:* Horseback riding, pack trips, hunting in season, boating, excellent stream and lake fishing.

*Rates:* Rates on application to T. S. Grace, H Bar 9 Ranch, West Yellowstone, Mont.

*A typical dude ranch setting  
picturesque in its seclusion.*





# Idaho Ranches

## BOYLE'S RANCH *Brand* JB

*Location:* Loon Creek, in northwestern Custer County, Idaho. It lies in a basin in the heart of the Salmon River Mountains, surrounded by peaks from 9,000 to 11,000 feet high. Elevation, 5,785 feet. Reached via good auto road from Hailey or Mackay, Idaho, both on the Union Pacific Railroad; distance from either town, about 105 miles. Parties met by auto at either place.

*Accommodations:* Cabins, rooms and ranch accommodations with electricity; saddle horses, pack strings, packers and guides furnished by reservation.

*Activities:* The Salmon River Country is an unspoiled wilderness, scenic, rugged and well forested, offering unlimited recreational opportunities. Hot springs abound along Loon Creek, in some places within sight of perpetual snow. Loon Creek, the Middle Fork of Salmon River, and the numerous lakes in the vicinity, furnish ideal trout and salmon fishing, while the Middle Fork Game Preserve, 12 miles north of the ranch, insures an abundant supply of big game in the surrounding territory.

*Rates:* For additional information and rates for short periods or summer vacations, including any or all of the above accommodations, write or wire Boyle's Ranch, Loon Creek, Stanley P. O., Idaho.

## CAPE HORN RANCH *Brand* Ⓡ

*Location:* On the southern edge of the Challis National Forest, among the rugged snow capped peaks of the Sawtooth Mountains, 85 miles north of the Sun Valley Lodge, Union Pacific's new winter sports resort, at Ketchum; and 145 miles from Shoshone, Idaho, on the main line of the Union Pacific Railroad.

*Accommodations:* Twenty-five guests can be accommodated in the main Lodge and in the spacious log cabins surrounding it. Large, comfortable, recreation cabin separate from the main Lodge. All cabins electrically lighted. Natural hot water springs provide an abundant supply of soft mineral water for the outdoor concrete swimming pool. The best of family style meals are served in the main Lodge; fresh fruits and vegetables in season; trout and wild game often served. Laundry sent out weekly.

*Activities:* Horseback riding over the many miles of trails far from automobiles. Each guest has a horse for his exclusive use. Hundreds of small lakes, high up in the mountains, offer a large variety of trout for every fisherman; swift mountain streams delight those who want action; Steelhead and Chinook salmon test the ability of the expert fisherman with hook and line and delight the amateur who wants to hunt them with a spear. For the big game hunter a wide variety of game is available in season. Bear and Mountain Lion at any time but the hides are not good until September. Deer, goat, mountain sheep in October. Complete pack trip equipment available for hunting or fishing parties. The picturesque, extremely rugged terrain of the Middle Fork of the Salmon River—reached in one day by pack train—offers unlimited possibilities to the hunter with guns or with cameras. Two annual Wild West Rodeos in the vicinity during July.

*Rates:* From \$35 per person per week including use of saddle horse. Pack trips \$5 a day extra for parties of four or more. Special rates for smaller parties. Transportation to the Ranch from the Union Pacific "Portland Rose" train at Shoshone, Idaho, by Stanley Stage every Tuesday, Thursday, and Saturday, \$5.00. Season June 1st to November 1st. For information and reservations write to J. R. Fox, Manager, Stanley, Idaho.



## IDAHO ROCKY MOUNTAIN CLUB

*Location:* Elevation, 6,900 feet. In the Sawtooth Range, Idaho, 110 miles from Shoshone, Idaho, on the Union Pacific main line, or 55 miles from Ketchum, Idaho, where Union Pacific has built Sun Valley Lodge, its luxurious winter sports resort. Guests are met by car at either station.

*Accommodations:* Spacious club-house with splendid view of the Sawtooth Range, commodious lobby, dining room, and individual guest rooms, each with private bath. Ten new and modern log cabins. Every room in cabins has fireplace, dressing room and bath. Private hydro-electric plant supplies power for lighting, cooking and refrigeration. Completely equipped concrete plunge provides sulphur baths from a natural hot spring. Lake for swimming and boating. Excellent food; fresh fruits and vegetables; also milk, cream, and butter from club's Guernsey herd. All buildings newly erected, exclusively for club purposes. The club is open to public, but reservations should be made in advance, as accommodations are limited to 40 guests.

*Activities:* Each guest has exclusive use of a saddle horse. Hundreds of beautiful mountain trails. Eight varieties of trout; also Chinook and landlocked salmon. Deer, bear and mountain goat obtainable in season within a day's journey of the Club; mountain sheep and elk may be bagged by means of a 30-day pack trip to the Middle Fork of the Salmon River. Sage hen, duck and geese in season. Completely equipped camping trips arranged.

*Rates:* \$75 a week for one in a room, or \$120 for two. Monthly and family rates on application. For information write C. W. Gillespie, Manager, Stanley, Idaho, or Winston Paul, 580 Fifth Avenue, New York City.

## ELK CREEK RANCH

*Location:* 28 miles from West Yellowstone, Montana (west entrance Yellowstone National Park), on Elk Creek in the rugged Bitter Root mountain range. Most easily reached by Union Pacific to Trude Siding, Idaho, 2 miles from ranch. Guests met by appointment without charge.

*Accommodations:* Attractive large main lodge with screened porch overlooking private lake teeming with trout. Accommodations for 30 guests in main lodge and commodious log cabins equipped with hot and cold water and fireplaces. Fresh vegetables, trout and dairy products.

*Activities:* Horseback riding, swimming, boating, fishing and big game and bird hunting; camping parties and short pack trips to mountain peaks and Yellowstone Park.

*Rates:* For detailed information and rates by week or month write Sam A. Trude, Island Park, Idaho. References required.

## FOUR S RANCH *Brand 4S*

*Location:* In the southeastern corner of Idaho, about 9 miles from the Union Pacific Station at Soda Springs. Free transportation between the ranch and Soda Springs. On Trail Creek, Slug Creek and the Blackfoot River, in the Aspen Range. A 3,500 acre stock ranch with beautiful pastures, adjoining the Caribou National Forest on the south and east. Elevation 7,000 feet.

*Accommodations:* Ten-room log house, beautifully surrounded by aspens and pines, contains a lounging room, with a large fireplace. Hot and cold showers. Excellent home cooking; ranch produces vegetables, milk, butter, eggs and meat. Spring water.

*Activities:* Horseback riding, mountain climbing, fishing, swimming, and hunting in season. Pack trips to Greys River, the head waters of the Missouri, Snake and Rio Grande Rivers, the Days River big game preserve, splendid fishing and wonderful mountain



## FOUR S RANCH (continued)

scenery. Annual Henry Stampede and Stockmen's Reunion at Soda Springs, which ranks among the best rodeos in the west. The Beef Roundup in August.

*Rates:* \$25 a week, including saddle horse and guide service. Two months' season for boys age 15 to 20 years, \$200; pack trips \$5 a day extra, minimum of six in the party. Four day, auto camp trip, ranch to Yellowstone Park and return \$50. Special family rates. Season June 1 to October 1; big game hunting season October 1 to December 1. References exchanged. For information, write to A. R. Strong, 4S Ranch, Soda Springs, Idaho.

## ROBINSON BAR RANCH

*Location:* At the junction of Warm Springs Creek and the Salmon River; in the heart of the densely wooded Salmon River Mountains. Guests arriving via Union Pacific met by appointment at either Ketchum or Mackay, Idaho—terminals of the railroad—80 miles from Ranch. Round trip charge \$20 per car.

*Accommodations:* Rustic log hotel and cabins offer clean, comfortable accommodations. Excellent meals with plenty of fresh fruit and vegetables; trout and wild game in season. Home-raised chicken and beef; fine dairy herd. Private hydro-electric plant; electrically equipped laundry available to guests. Hospitable and homelike.

*Activities:* A varied program of recreation and amusement. Fine, mountain-bred horses; five-hole golf course and tennis court; horseshoe pitching and croquet. Two large swimming pools, indoor and outdoor, supplied with constantly flowing natural mineral water. Pack trips and big game hunting parties taken on advance reservation. Mountain goat, big-horn sheep, deer and bear inhabit the region. Excellent trout and salmon fishing.

*Rates:* \$30 a week, single; \$55 a week, double; children under ten, half price. Special rates on application for extended stays and large families. Rates include lodging, meals and use of all ranch facilities. Saddle horses, 50c an hour; \$2.50 a day. Reservations must be made at least two weeks in advance. Write to Robinson Bar Ranch, Clayton, Idaho (telegraph address, Mackay, Idaho), during summer months; to Chase A. Clark, 201 Rogers Bldg., Idaho Falls, Idaho, during the winter.

## WYODAHO RANCH *Brand J-Y*

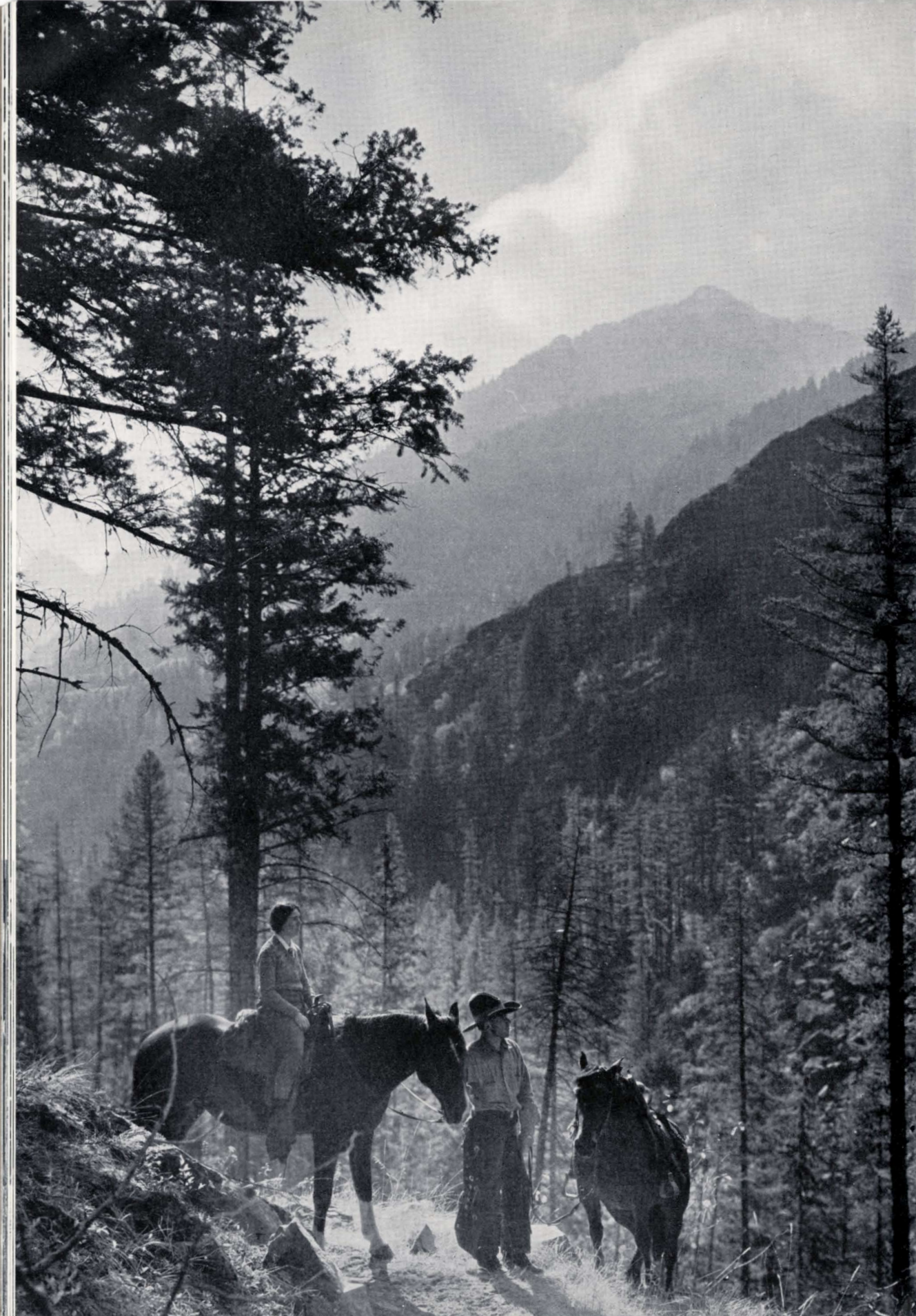
*Location:* About fifteen miles east of Ashton, and five miles from the southwest corner of Yellowstone National Park. The ranch is at an elevation of 6,000 feet and is entirely surrounded by the Targhee National Forest Reserve. Union Pacific patrons are met at Ashton. No charge for transportation to and from the ranch.

*Accommodations:* Comfortable accommodations are provided in log cabins and floored tents. Hot and cold showers, water toilets, tub baths, and other modern conveniences. Tents scattered among the aspen and lodgepole pines. Pure water from an excellent spring. Simple, wholesome food with plenty of milk and cream from our ranch cows. Wyodaho is an old producing hay and cattle ranch with the true frontier atmosphere and the "Old West" hospitality. A private horse for each guest. Membership in the ranch family is limited and restricted.

*Activities:* Western riding, swimming, fishing, and horseback trips out over the cattle ranges and Targhee forest trails. Pack trips into Bechler canyon, the Yellowstone Park, and the Grand Teton country are featured. Big game hunting in season. Guides and excellent equipment provided and reasonable rates.

*Rates:* \$35 per week. This includes the use of a saddle horse. Pack trips out from the ranch \$10 per day per person. Motor trips out from the ranch reasonable. We take guest into Yellowstone Park after the regular service has been discontinued. For information or reservations write: J. A. Young, Wyodaho Ranch, Ashton, Idaho.







# Oregon Ranches

## BIG MINAM HORSE RANCH *Brand* ♀

*Location:* A Guest Ranch along the Big Minam River, in a valley 3,800 feet above sea level, in the heart of the Wallowa Mountains. A region of historic background. It is the "West" in all its primitive splendor without roads and unchanged except for some hundred miles of forest service trails. Guests met by appointment at LaGrande, Oregon, on the Union Pacific.

*Accommodations:* For twelve guests. Comfortable private log cabins. Finest home-cooked meals served at ranch house. Its primitiveness and true western character will appeal to those who want a taste of life as lived by the early pioneers.

*Activities:* Riding, fishing, hunting and swimming. Well broken saddle horses, safe but active. Off-the-trail trips across rivers and up mountains 7,000 feet high for the hardy. The Big Minam and its tributaries provide some of Oregon's finest trout fishing. Overnight pack trips arranged. Abundance of deer, elk, bear and grouse provide good hunting in season under direction of experienced guides. Special pack trips to Pendleton Round-Up arranged in September.

*Rates:* Season June 1 to November 15. Reservations required two weeks in advance. \$22.50 weekly, \$80 per month, includes board, lodging, and saddle horse. For additional information, group rates, charges for guides and pack service, write Hudspeth Bros., Cove, Union County, Oregon.

## DIAMOND-AND-A-HALF RANCH *Brand* ♂

*Location:* Blue Mountain region on the old Oregon Trail, near Hereford, Oregon, which is 40 miles southwest of Baker, Oregon, a Union Pacific station. Guests met at Baker by appointment. Transportation to ranch \$5 per person round trip. Elevation 3,600 feet.

*Accommodations:* Large ranch building and adjacent cabins accommodate a limited number of guests from May to October. Bath house with hot and cold showers.

*Activities:* Mountains, forests, rivers, the open range, horseback riding, fishing and pack trailing are among the attractions. The property comprises 20,000 acres, much of it a scenic, semi-mountainous wilderness. Real cattle ranching is carried on, an interesting sight for many visitors. Races and cowboy stunts staged on a half-mile circle track; also large corral for local rodeos. Trips arranged to Pendleton Round-Up during September.

*Rates:* \$35 a week for one in a room, \$30 a week each for two, including cabin, meals and use of saddle horse, but not overnight pack trips. Special rates for families and parties staying four weeks or longer. For complete information, exchange of references, etc., address Diamond-and-a-Half Ranch, Hereford, Oregon.

## LAZY T RANCH *Brand* ♂

*Location:* One of the oldest stock ranches in Oregon, founded in 1862 by the father of the present owner. Surrounded by the Blue Mountains, it is located a few hours drive from Pendleton, Oregon, on the Union Pacific, in the famous John Day Valley. Elevation 3,100 feet. Ranch cars will meet the guests at Pendleton by appointment.





## LAZY T RANCH (continued)



*Accommodations:* Limited number of guests accommodated in a typical, 14-room, western ranch house that has all the modern comforts: spacious living room, screen porches, electric lights, bathrooms with hot and cold running water, and the best beds. The ranch maintains its own garden and dairy herd which provide fresh meats, chickens, eggs, cream and vegetables. Fish and game in season gives the guest a "taste" of the West. Daily mail, telegraph and radio.

*Activities:* The ranch raises cattle, race horses and polo ponies. Guests are encouraged to enter into the ranch life of cattle and horse round-ups, branding and fence riding. Each guest has choice of a horse: beginners are given gentle, western cow ponies, while those more advanced may have spirited thoroughbreds. Informal polo games and rodeos, archery and trap shooting. Excellent lake and stream fishing. Elk, deer, bear, cougar, wildcat are plentiful besides the game birds of ducks, geese and pheasant. No closed season on bear or coyote. Within a short distance of the ranch, is a 200 square mile preserve in which hunting is limited to the bow and arrow.

*Rates:* \$35 per week per person two in a room; \$40 per week per person one in a room. This includes room, meals, horses, personal laundry and normal use of guides and ranch cars. Special rates given to families, parties and for extended stays. Children under twelve half rate. For those staying less than two weeks there will be a \$5 charge per person for the trip from Pendleton to the ranch. Season June 1st to October 1st.

For illustrated booklet and complete information, write or wire: Charles Oswald, The Lazy T Ranch, John Day, Oregon.

## TRIANGLE M RANCH *Brand*

*Location:* Reached by no roads. At fork of Big and Little Minam Rivers in the Wallowa Mountains of northeastern Oregon. Entirely surrounded by Whitman and Wallowa National Forests, and adjacent to Eagle Cap Primitive Area which contains about 60 high alpine lakes nestled in a paradise of lofty, granite, limestone and marble peaks. Reached via Union Pacific to LaGrande, Oregon, then 40 miles by auto and four miles by horseback over mountain trails.

*Accommodations:* Small rustic mountain ranch house of log construction with large rock fireplace. Furnishings in keeping with surroundings, no modern conveniences but guests made comfortable away from civilization. Meals family style. Ranch has own fresh milk, eggs and vegetables. Pure mountain water.

*Activities:* Horseback riding, hiking, mountain climbing, overnight pack trips, swimming, and fishing. Many beautiful trails through pine forests for short rides or hikes. A country of rare interest to geologist or botanist. Deer, bear, elk and coyote are numerous. Rainbow, Brook and Dolly Varden trout as well as whitefish are plentiful. Good fishing within 500 yards of ranch. Fine grouse and big game hunting in season.

*Rates:* Season June 1 to November 1. \$22.50 weekly, includes accommodations, meals, and use of saddle horse. Pack trips and guide service extra. Reservations must be made in advance as accommodations limited. References exchanged. Write H. L. McElroy, Triangle M Ranch, Cove, Oregon.

## U. S. BAR RANCH *Brand*



*Location:* Near the little western town of Ukiah, Oregon, in the famous Camas Prairie and Blue Mountain country and forty miles south of Pendleton, Oregon. Guests met at Union Pacific station Pendleton by appointment. Elevation 3,200 feet.

*Accommodations:* A place to live comfortably and informally on a real western cattle ranch. Ranch home and rustic lodge accommodate guests; hot and cold running



## U. S. BAR RANCH (continued)

water, tub and shower bath; all outside rooms. Western food that you can "sink your teeth into." Daily mail, telegraph, radio and telephone.

*Activities:* Riding, hunting, swimming, fishing, dancing . . . in the winter, skating, skiing, tobogganing, and sleigh rides. Cowboy dances and rodeos at Ukiah. Natural hot mineral springs for swimming just a short distance from the ranch. This section of the country is famous for its Elk and Mule Deer, which you can hunt in season. Arrangements can be made for guests to see the Ukiah Rodeo in July, Heppner Rodeo in August and the Pendleton Round Up in September.

*Rates:* Rates and descriptive booklet will be furnished on request. Make reservations well in advance. Rates include room and meals, and a horse and saddle. Special rates to hunting parties. Open all year. Write U. S. Bar Ranch, Box 106, Ukiah, Oregon.

## WALLOWA LAKE LODGE

*Location:* South shore of Wallowa Lake in the Wallowa Mountains of northeastern Oregon. A land of lofty peaks, canyons, forest, gem-like lakes and swift mountain streams. Once the favored spot and happy hunting ground of Joseph, Chief of the Nez Perces. Post office, Joseph, Oregon, which is the terminus of the La Grande-Joseph branch of the Union Pacific.

*Accommodations:* The Lodge, of 36 rooms, is modern in every respect. Rooms with or without private bath; large, rustic recreation room with huge fireplace, hardwood floors, spacious windows and wide verandas overlooking pine studded slope to lake. Dining room of unusual attractiveness serving well-cooked food of large variety.

*Activities:* Boating, fishing, and swimming in lake. Tennis, quoits, bowling, ping-pong. A nine-hole golf course within a few minutes' drive. Short motor or saddle trips at low cost. Or, just plain loafing. Dancing and evening entertainment at Lodge, cards and other table games. Nearby are 60 smaller mountain lakes filled with gamey trout. Hell's Canyon, 25 miles due east, is the deepest chasm in the surface of the earth, deeper than the Grand Canyon. An easy day's round trip drive from the Lodge to rim of Hell's Canyon.

*Rates:* Weekly rates for room and meals as low as \$22.50 per person; saddle and pack trips with guides at nominal rates. For booklet and further information, write Charles A. Bingaman, Manager, Joseph, Oregon.

*Night Brings its own forms of "Indoor Sports."*

*Cowboy and Cowgirl Entertainment is Novel.*









# COLORADO RANCHES

The inauguration of Union Pacific—Chicago & North Western daily Streamlined train service in June 1936 added two days to Colorado Dude Ranch vacations. Denver is now only 16 hours from Chicago. A "City of Denver" Streamliner leaves Chicago and Denver late each afternoon and arrives other terminal early next morning. No-Extra-Fare. These beautiful Streamliners, completely air-conditioned, provide deluxe chair car and standard Pullman sleeping car accommodations, dining car with cocktail lounge, and Pullman room car with observation lounge. An exclusive attraction on the "City of Denver" Streamliners is the "Frontier Shack," a unique replica of the old time western saloon. The Registered Nurse-Stewardess service is another exclusive feature. For advance reservations consult nearest Union Pacific office shown in directory on page 55.

## COLORADO PETRIFIED FOREST RANCH *Brand T*

**Location:** At Florissant, 36 miles from Colorado Springs, via the main Colorado Springs-Cripple Creek highway, through Manitou and Historic Ute Pass of Indian Fame; 18 miles from the world's famous gold camp of Cripple Creek; 16 miles from Pikes Peak the sentinel of the Rockies. Reservations made in advance assure guests free transportation to ranch from Colorado Springs. We recommend Union Pacific service to Denver; convenient connections for Colorado Springs.

**Accommodations:** 20 to 25 guests. Strictly modern, 18 room ranch lodge, with or without private bath, excellent food; dairy products from our own ranch, fresh vegetables; frying chickens. Cheerful fireplace of petrified wood.

**Activities:** The Colorado Petrified Forest is visited by thousands of people each summer, as it is the Geological wonder of the Pikes Peak region, also boasting the largest fossil beds now open to the public in this region. Horseback riding with old Pikes Peak always in view; trout fishing in near-by streams, hiking and prospecting.

**Rates:** June 1st to October 15th, American Plan: \$25.00 per week and up; saddle horses by hour, day or week; special party rates on application; young boys and girls solicited for the season; daily mail; telephone and telegraph service.

For other information and details write Colorado Petrified Forest Ranch, Florissant, Colo.

## BRIDLEBIT GUEST RANCH *Brand M*

**Location:** North of Colorado Springs thirty miles, south of Denver, forty miles. Cars meet guests at Denver or Colorado Springs, on advance notification.

**Accommodations:** Main ranch house with lounge and dining room. Large porch, comfortable cabins to accommodate families, all modern plumbing and electric lights. Excellent meals, milk and cream from Jersey cows, fresh fruits and vegetables.

**Activities:** Beautiful mountain trails, pine trees and bluffs for hiking and riding. Pack trips, auto trips, fishing, ping-pong, badminton, croquet, swimming; tennis and golf twenty-five minutes to Colorado Springs.

**Rates:** \$22.50 per week and up; saddle horse rates reasonable. Monthly and family rates on application. Limited number of guests. Place application in advance. Write Elizabeth Wagner, Bridlebit Guest Ranch, Palmer Lake, Colorado.

## DROWSY WATER RANCH

**Location:** Beyond the blue horizon, at the headwaters of the Silvery Colorado, in the shadows of the Continental Divide, lies the Drowsy Water Ranch, on the frontier, at an elevation of 8,300 feet. A streamlined spread reached by the streamlined trains of the Union Pacific to Denver, then 100 miles west, by D. & S. L. R. R. to Hot Sulphur Springs, where, by appointment, guests are met at no extra charge.





## DROWSY WATER RANCH (continued)



*Accommodations:* Low, rambling, log lodge dining room and spacious living room with massive fireplace. Library, radio and Ranch Trading Post, comfortably furnished and attractively decorated. Telephone, telegraph and daily mail at ranch. Cozy, comfortable and cheery log cabins nestled in the trees, along the rippling drowsy water creek, are conveniently located. All cabins with running water, showers or tile baths, electric lights, spring filled mattresses, best bedding. And our refrigeration, garden, dairy cows, chickens, ducks, turkeys and geese assure you of excellent meals with a variety of menus, well served.

*Activities:* Horseback riding, of course. We raise registered American saddle-bred horses and some of the best cow ponies in the west. This is a stock ranch with all the natural activities of cattle-on-the-range, and horse-breaking in the corrals. Fishing in our own privately stocked lake and streams, as well as the Colorado River, and many of Colorado's famous fishing grounds, within a few miles. Pack trips over endless miles of game trails, through uncharted wilderness, to high altitude lakes and sparkling streams, from one day on; hiking, swimming, dancing, etc. Rodeos at ranch and nearby towns, trips arranged. Ranch life and activity all very informal.

*Rates:* American Plan only—\$25 per week and up—June 10th to Labor Day. Saddle horses, \$3 per day, \$15 per week. Instructions included.

Detailed booklet sent upon request—reservations should be made early—write Drowsy Water Ranch, Hot Sulphur Springs, Colorado.

## HACIENDA DEL MONTE RANCH



*Location:* A 2,000 acre cattle ranch at foot of Mt. Blanca, 45 miles west of Walsenburg, near Redwing. Union Pacific trains make good connections at Denver for Pueblo and Walsenburg, where guests are met.

*Accommodations:* Modern cabins and main lodge equipped with electric lights, hot and cold water, and baths. Guest limit, 20 persons. Milk, cream, and mountain grown vegetables, chickens, beef and lamb produced on ranch. Delicious food served ranch style.

*Activities:* Guests welcome to participate in any ranch activity. Long or short horseback trips, with or without guide. 15 miles of trout streams.

*Rates:* \$30 week and up; saddle horse \$3 per day or \$15 weekly. Reservations should be made in advance, stating number in party. Doctor always available. Open all year. Write Dr. or Mrs. A. F. Stanley, Redwing, Colo.

## HOLZWARTH RANCH *Brand* 𐐇



*Location:* A ranch in the "tip" of the Rockies with a spirited Western hospitality. 123 miles from Denver, 10 miles north of Grand Lake (P. O.), and 36 miles west of Estes Park in the Rocky Mountain National Park; practically at the "front door" of the world-famous Grand Lake Resort, yet far enough removed to avoid the "city" atmosphere. Take Union Pacific to Denver then either: Daily Bus Service, Rocky Mountain Transportation Company, from Denver, or D. & S. L. Ry. to Granby, Colorado, where guests are met by appointment.

*Accommodations:* Delightful rustic lodge, comfortably and attractively furnished with every modern convenience. Guest rooms with or without private bath. (Suites with connecting bath.) Excellent meals cooked by a member of the Holzwarth family. Our own dairy and garden vegetables. Fresh fruits in season. Telephone, telegraph and daily mail service. 50 guests. Season May 31st to November 1st.

*Activities:* Three mile trout stream on our ranch and near-by lakes assure excellent trout fishing. Horseback riding and hiking. Pack and fishing trips with guide. Auto



## HOLZWARTH RANCH (continued)

trips arranged to scenic spots. Rodeo staged Sunday afternoons at Ranch, during season. Evening amusements and dancing parties.

*Rates:* American Plan—lodging and meals—\$25 to \$50 per week per person, or \$40 to \$65 per week per person with a fine saddle horse assigned exclusively. (Special arrangements for children and families.) These rates include transportation, in our station car, to and from Granby Railroad Station to Ranch, as well as the services of experienced guides on short trips. (Special rates for pack trips. Mention number in party.)

Descriptive folder and further information upon request. Address John Holzwarth, Grand Lake, Colorado.

## LX BAR RANCH *Brand* LX

*Location:* Ten miles north of Hayden, Colorado, beautifully situated in the foothills of the Elkhead Range, elevation 6,500 feet, with outlook across miles of rolling grazing land to the Little Flat Tops. Below, in the Bear River valley, are great cattle ranches whose purebred Herefords are pastured near-by; above are the pine clad slopes of the Elkhead Mountains, and the Routt National Forest. Take Union Pacific to Denver, then D. & S. L. to Hayden, Colo. from where guests are transported to ranch without charge.

*Accommodations:* Comfortable log cabins with screened porches, modern plumbing, and good beds. Meals are appetizing, hearty, and varied; well cooked and well served.

*Activities:* Every guest is provided with his own horse and saddle. Short horseback trips with guide supervision can be taken whenever guests desire. Pack trips into the mountains, where there is fine fishing and wild game abounds, can be arranged without extra charge. Every two weeks there is planned an automobile trip, which guests may take if they desire. Such trips will include "Frontier Days" at Cheyenne, the annual dramatic festival at Central City, Yellowstone National Park, and the Grand Canyon.

*Rates:* On application. Season June 15 to September 15. References required. Write to Mrs. J. C. Woodley or Miss Elisabeth Stanwood, 616 Noyes Street, Evanston, Illinois, till June 15; thereafter, at Hayden, Colorado.

## RUGH RANCH *Brand* 8


*Location:* East side of Cameron Pass, up the beautiful Poudre River Canyon, 43 miles west of Ft. Collins, Colorado. Altitude 7,500 feet. Reached via Union Pacific to Ft. Collins.

*Accommodations:* Cabins for guests and a central dining lodge with fireplace. Excellent meals with vegetables from ranch garden, plenty of milk and fresh eggs.

*Activities:* Scenic Poudre River affords good trout fishing; hunting in season, and saddle horses. Informality and cordial hospitality of the care-free life on this mountain cattle and horse ranch are featured.

*Rates:* Reasonable and furnished on application. Accommodations for a limited number of guests by reservation only. Write: R. B. Rugh, Eggers, Colorado.

## SADDLE POCKET RANCH *Brand* △

 *Location:* In Colorado and Wyoming in the valley of the Little Snake River; closely surrounded by mountains. Union Pacific Railroad to Rawlins, Wyo., where guests will be met by ranch car. Transportation, Rawlins to ranch \$15 round trip.



## SADDLE POCKET RANCH (continued)



*Accommodations:* A real cattle ranch; operated by a member of the family that established it fifty years ago. It retains the friendly, informal atmosphere of the old West. Open to limited number of guests who are accommodated in an attractive ranch house equipped with electric lights, running water and baths, and in two-room cabins with private baths. Excellent food is a feature of the ranch. Eleventh dude season.

*Activities:* Guests may join in the horse and cattle round-up and branding in July; also the beef round-up in August and other ranch activities. Long and short horseback trips daily, with wrangler and regular pack trips. The ranch is well located for pack trips, close to the beautiful Sawtooth, Sierra Madre and other ranges. Fishing in Battle Creek and the river. Fine Western horses and experienced guides.

*Rates:* \$45 a week, including saddle horses. Inquire for pack trip rates, mentioning number in party. References required. Open all year. Write R. D. Salisbury, Saddle Pocket Ranch, Slater P. O., Colorado.

## S BAR L RANCH Brand S-L

*Location:* Stapp's Lakes, in Roosevelt National Forest and Boulder Glacier region, near timberline at foot of Mt. Audubon; 65 miles from Denver, 35 miles from Boulder, 28 miles from Estes Park, 8 miles from Ward, Colorado.

*Accommodations:* Main Lodge with recreation and dining-room; separate cabins accommodate 50 guests. Shower and baths, electric lights, laundry service. Famous for food.

*Activities:* Fishing in four privately owned lakes; pack trips to Lone Eagle Peak over Continental Divide via Buchanan Pass into Arapahoe National Forest, also horseback trips to the St. Vrain Glacier, Red Deer Lake, and many other beauty spots. Swimming, hiking and boating. All winter sports including skiing from November to May.

*Rates:* American Plan only; weekly \$30 single, \$25 (per person) double; per day, \$5 single, \$4 (per person) double. Rates are subject to change. Rates include boating, fishing and swimming privileges. Saddle horses, \$20 per week, \$3.50 per day. Inquire for pack trip rates, stating number in party. Open all year. For further information and booklet write Stapp Brothers, Stapp's Lakes, Ward, Colorado.

## SLW RANCH Brand ♂



*Location:* 10 miles east of Greeley, Colorado, and 60 miles from Estes Park Village. Quickly and conveniently reached; 15-hour service from Chicago, via Union Pacific's "City of Denver," to LaSalle where we meet this train.

*Accommodations:* The airy rooms of the large, two-story ranch house, which has running water and modern bathrooms, accommodate 15 guests. Wholesome, varied food; ranch has own vegetables, poultry, milk, butter and eggs.

*Activities:* This 5,000-acre ranch has been operated by the Witwer family for the past 36 years. It offers guests an opportunity to enter into or observe real cattle ranch life in a scenic country. Auto trips to Rocky Mountain National Park, Cheyenne "Frontier Days," Denver, etc., at reasonable rates. Annual rodeo at Greeley, July 4th. This ranch features its horse-drawn vehicles; guests enjoy riding in the London four-in-hand tallyho coach, or driving the cabriolet or mail phaeton. Pony rigs for children. Unusually fine, home-bred saddle horses for use of guests. Small game hunting in season.

*Rates:* \$30 to \$45 a week depending on stay, number in party and accommodations required. Rates include use of private horse or pony. Ranch is open all year, and quotes special winter rates. Reservations must be made well in advance; references appreciated and exchanged. For full details, write to SLW Ranch, Greeley, Colorado.



## SMILLIE'S F SLASH RANCH *Brand F*

*Location:* Granby, Colorado, 100 miles west of Denver, and just southwest of Rocky Mountain National Park. Reached via Union Pacific to Denver, thence via D. & S. L. Ry. to Granby; or Rocky Mountain Park Transportation Co.



*Accommodations:* Attractive cabins and comfortable ranch house with bathroom and running hot water, accommodate 15 to 20 guests. Simple, appetizing fare; fresh vegetables and fruit, rich milk and cream.

*Activities:* A genuine stock ranch, with the true Western atmosphere; guests, if they so desire, may join in ranch activities and sports—wrangling horses, roping, etc. Trout fishing in Willow Creek, flowing past the ranch; also a cool swimming hole. Scenic rides into the mountains, and pack trips of several days' duration; high-grade saddle horses for guests; tennis courts. Ranch is open all year. The Winter Sports program is growing more popular each year. Skiing and skating are among the winter attractions.

*Rates:* \$30 a week, or \$100 a month, including use of saddle horse. For further information, write to A. F. Smillie, Granby, Colo.

## SPRAGUE'S RANCH

*Location:* Glacier Basin, in the heart of the Rocky Mountain National Park, 75 miles northwest of Denver, and 7½ miles west of Estes Park Village. Sprague's is the starting point of many of the most interesting and scenic trails of this Continental Divide region. Daily bus service to and from Denver and Estes Park. Guests met at Estes Park Village by ranch car.

*Accommodations:* All buildings are of log construction, modern and well equipped. The grounds and buildings are electrically lighted. Main lodge contains the office, lobby, dining room with large fireplaces, writing and card room, and guest rooms with and without private bath. Nearby cabins with single and adjoining rooms are comfortable and convenient equipped with heat and private bath facilities, and an enclosed sun-porch living room. Telephone, telegraph, laundry service, and daily mail are available. Delicious meals are served, prepared with fresh produce. Mountain trout dinners are a specialty.

*Activities:* Excellent trout fishing in private lakes, stocked annually, also in near-by mountain lakes and streams. Horseback riding, hiking, tennis, swimming, ping-pong, and similar informal entertainment are to be enjoyed. Everyone rides the best of saddle horses with competent wranglers as guides. Steak frys and trips are planned for the guests.

*Rates:* American plan, daily \$3.50, weekly \$24.50 up. Monthly, seasonal rates, and detailed booklet sent upon request. Season—June 1 to October 1. Reservations should be made early. Write E. M. Stopher, Manager, Sprague's, Box F, Estes Park, Colorado.

## STEAD GUEST RANCH *Brand Lazy D*

*Location:* In Rocky Mountain National Park, 75 miles northwest of Denver and 4½ miles west of Estes Park Village. Daily auto stage service from Denver, Ft. Collins, Longmont and Loveland.

*Accommodations:* Main ranch building contains lobby, card rooms, large dining hall, and a few sleeping rooms. Cottages conveniently grouped about the main building contain from 1 to 15 rooms each, with or without private bath. All cottage rooms are fitted for



## STEAD GUEST RANCH (continued)

single occupancy, having outside entrances and porches. Grounds and buildings electrically lighted; laundry, telephone, telegraph, and daily mail. Own dairy herd. Excellent meals.

*Activities:* Horseback riding or hiking over endless trails in heart of Colorado Rockies. Trout fishing, scenic trips, auto tours in Park. Golfing at Country Club, moonlight rides and steak fries, dancing and impromptu entertainments. Horseback trips with guide free.

*Rates:* \$3.50 daily, \$22.50 per week, up. American plan. Saddle horses extra. Write W. G. Lewis, Stead Guest Ranch, Estes Park, Colo.

## TIMBER TOP RANCH



*Location:* Woodland Park, one hour's drive west of Colorado Springs. Adjoins the Pike National Forest, a short distance from Cripple Creek. Ranch cars will meet guests in Colorado Springs. Convenient connections to and from Denver with Union Pacific trains.



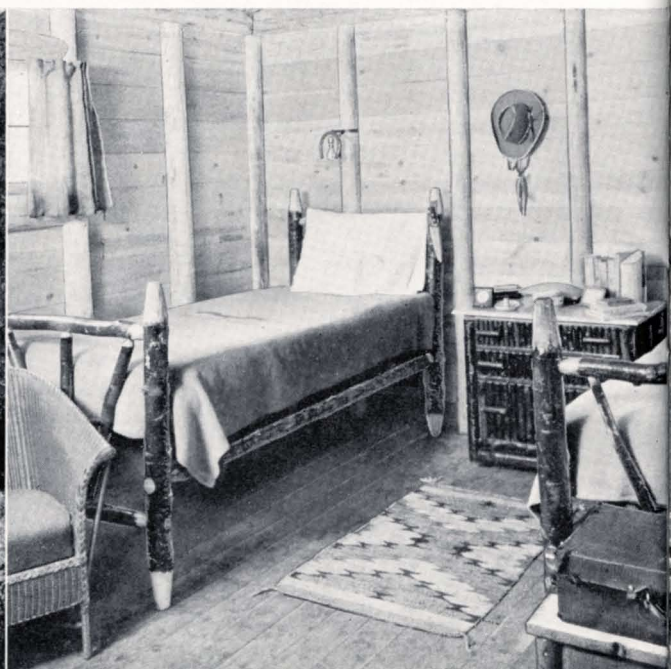
*Accommodations:* For thirty guests. References required. Ranch lodge furnished in rustic style, cheery fireplace, Trading Post. One and two-room cabins, with and without shower baths. Nurse or physician in attendance. Our menus assure you of an abundance and variety of good home-cooked food. Daily mail, papers and telephone. Splendid library.

*Activities:* Excellent western saddle horses under guidance of western wranglers; pack trips with guide to summit of Pike's Peak; trout fishing in nearby streams, rifle range, athletics, our guests can swim, play tennis or golf at the Broadmoor Hotel (one hour away). Evening entertainment. We arrange sightseeing trips to nearby Pike's Peak, Garden of the Gods, Cave of the Winds, Cliff Dwellings, Sky Line Drive, Royal Gorge, and Manitou Mineral Springs. Winter Sports and Hunting in season.

*Rates:* June 20 to September 10. \$6 per day or \$35 per week (American plan). Horses may be rented for \$1.50 half day or \$3 per day; weekly \$15. Weekly rate American plan including use of saddle horse, \$47.50. Reasonable fall and winter rates and for large parties, upon application. Write Lee Hermann, Manager, at 2030 Oak Way, Colorado Springs, Colo., or care Union Pacific, 521 Fifth Ave., New York City.

*Comfort and Privacy in Secluded Cabins*

*Good Beds and Restful Sleep are Assured*





## WIND RIVER RANCH *Brand*

*Location:* Nestled between Longs Peak and Twin Sister Mountains in Colorado National Forest, on eastern slope of the Continental Divide. Property bounded on three sides by Rocky Mountain National Park. The ranch is 30 miles west of Lyons and 75 miles northwest of Denver. Ranch car can meet guests at either point, or at Estes Park Village.

*Accommodations:* An attractive and substantial log ranch house with steam heat and log guest cabins, provides comfort for 20 guests. Buildings are insulated and equipped with electric lights, hot and cold water, and fire places. Season June 1 to October 1.

*Activities:* Horseback riding and mountain climbing. Fishing for rainbow, cut-throat and brook trout in Thompson River, St. Vrain Creek and in the numerous lakes and streams of the region. Shooting trips for elk, deer and bear arranged in season.

*Rates:* Rates, information and booklet upon request. Address W. C. Booth, Estes Park, Colo.

## WOODLAWN RANCH

*Location:* A real western ranch on the Colorado-Wyoming States line, in Roosevelt National Forest, in the Rocky Mountains. Elevation, 7,300 feet. Forty miles west of Ft. Collins, Colo., or twenty-five miles from Laramie, Wyo. Ranch car will meet guests at Union Pacific stations in either city, by appointment, without charge.

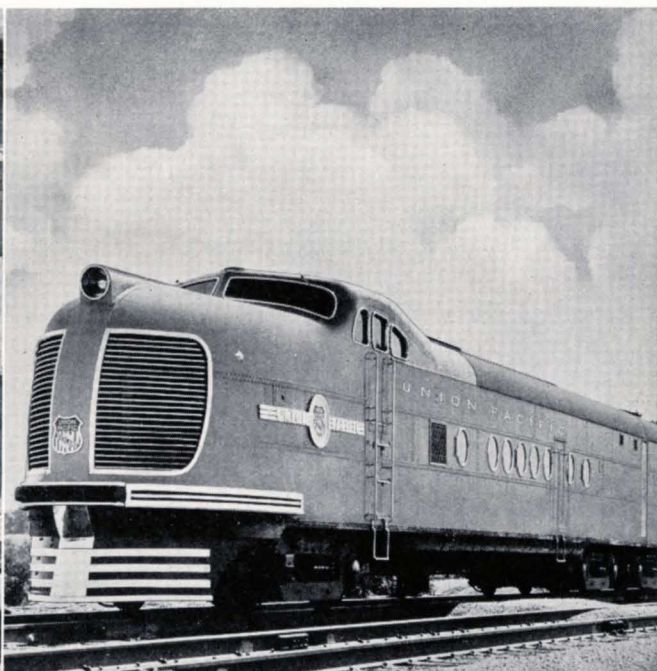
*Accommodations:* Modern ranch home, cabins, recreation pavilion. Delicious home cooked meals; ranch grown vegetables, milk, butter and meats. Pure mountain water.

*Activities:* Hunting, fishing (protected trout stream), swimming, dancing, Round-up wagon trips with expert guides, rodeos. Trip to Cheyenne "Frontier Days" last week in July. Good string of saddle horses.

*Rates:* \$24.00 per week; \$90.00 per month. Booklet on request. For reservations write or wire Edw. Schaffer, Fort Collins, Colorado.

*The "Frontier Shack," a unique Tavern,  
on The Streamliner "City of Denver."*

*The Streamliner—"City of Denver"  
"Overnight—Every night" between Chicago and Denver.*





# Nevada Ranches

*Nevada is well known for its liberal laws and customs. In some aspects it has retained more of the exciting habits of the storied West than its neighboring states. It is a State of varied contrasts: mountains and deserts, modern cities and "ghost towns," and great open spaces. There is plenty of elbow room in Nevada. Before leaving we suggest you see more of its historic and interesting places by journeying southward to Las Vegas. Las Vegas is the gateway to Boulder City, Lake Mead and Boulder Dam, and being on the main line of the Union Pacific there is convenient service to California or the East.*

## EAGLE VALLEY RANCH

*Location:* Three miles north of Carson City, Nevada, twenty-seven miles south of Reno, and sixteen miles from Lake Tahoe, overlooking the beautiful Eagle Valley and immediately adjoining on the west the Sierra Nevadas. Famous Overland Route trains to Reno, where guests are met by appointment.

*Accommodations:* Main house with large living room and fireplace, dining room and large porch. Facilities for a limited number of guests, each room equipped with modern bathroom facilities, electric lights, General Electric hot water system.

*Activities:* The ranch has its own swimming pool, 30x60, saddle horses for riding and pack trips including trip to beautiful Lake Tahoe. Motor trips to points of interest. All sports available. Four excellent golf courses within easy motoring distance.

*Rates:* \$50 to \$75 per week. Special rates per month. Rates include room, meals, and all sports as listed under activities. We have an exclusive clientele. Accommodations must be reserved in advance and references are required. Eastern reference: Miller & Burrows, 67 Wall Street, New York City. Write Eagle Valley Ranch, Carson City, Nevada.

## NEVADA STOCK FARM-DUDE RANCH

*Location:* Two miles south of the Court House at Reno, Nevada, on the South Virginia Road. Close to the city and all amusement centers. Write or wire and we will meet your Overland Route train in Reno, Nevada.

*Accommodations:* Hotel conveniences, in private cottages, built of natural rock. All with private baths, electric, hot and cold water, beauty-rest mattresses, chesterfield sets, radios, large trees, lawns; two artesian hot and cold mineral swimming pools, recreation and entertainment hall; all buildings are fire-proof. Telephone, telegraph and medical service.

*Activities:* Horseback riding, tennis, sports, moving pictures. Vacationists and divorce seekers enjoy a carefree vacation on the Ranch. Dining, riding, swimming and dancing. Our guests are invited to participate in all ranch activities. Auto and pack trips for our guests without charge, to the Ghost Cities, old mining towns and points of interest. Hunting and fishing in season. Open all year.

*Rates:* \$40 per week, includes meals, private cottage, private bath in each cottage; maid, dining and room service, Reno to ranch auto service. Saddle horses extra charge. For folder and further information write: Nevada Stock Farm-Dude Ranch, Reno, Nevada, or New York Office: Hill & Sons, 1013 Bushwick Ave., Brooklyn, N. Y.

## PYRAMID LAKE RANCH *Brand P*

*Location:* Thirty-two miles north of Reno, Nevada, by new state highway—on the sandy shores of Pyramid Lake—in the center of the colorful Piute Indian Reservation. Fast Overland Route, air-conditioned trains arrive Reno daily.



## PYRAMID LAKE RANCH (continued)

*Accommodations:* Informal ranch life with modern hotel comforts and conveniences. Main ranch house and Piute Trading Post—stockade sun patio—guest houses and cabins—comforts include electric lights, private tiled bathrooms, oil stoves or fire places, coil spring mattresses, Filipino dining and room service, fancy and plain foods, fresh vegetables and milk. Ranch accommodates 60 guests.

*Activities:* An all-year vacation-land for vacationists—divorce-seekers—Hollywood movie stars—sportsmen and artists. Swimming with 15 miles of sandy beach—riding Indian trails—world's largest trout—boating trips with Indian guides—hunting deer and small game—pack trips to back country—games and barbecues—weekly trips without charge to permanent guests to nearby Virginia City, Lake Tahoe or Lake Winnemucca.

*Rates:* \$33 to \$46 per week each—includes everything, room and meals, daily Reno-ranch auto service, saddle horses. Write or wire and we will meet your train in Reno. Write for folder: Dorothy Dean Collier, Manager, Pyramid Lake Ranch, Sutcliffe, Nevada.

## TH RANCH *Brand* TH

*Location:* A real cattle ranch, 35 miles northeast of Reno in Washoe County, Nevada, two and a half miles from beautiful Pyramid Lake. The ranch is an oasis of cottonwood trees and springs in a desert country. Take Overland Route train to Reno, Nevada, where guests are met at the station—no charge for transportation to ranch. Open all year.

*Accommodations:* Separate cabins with or without private bath. Central bath rooms for those who do not wish private bath. Main ranch building contains living room, dining room and large porch. All buildings electric lighted.

*Activities:* Riding at any time of the year over beautiful mountain trails. Swimming and fishing in Pyramid Lake. Deer, sagehen and duck hunting in season.

*Rates:* Without private bath \$40 a week, with private bath \$45-\$50 a week. \$5 less per person for two in one room. Special rates for family parties. All rates include saddle horse. Address: Neill West, TH Ranch, Sutcliffe, Nevada.

*Bird and Small Game Hunting is Popular in Nevada.*

*Clark Gable with 20-pounders from Pyramid Lake, where bite the "World's Largest Trout."*





# California Ranches

## FURNACE CREEK RANCH (*Death Valley Season November 1st to May 1st*)

*Location:* In the heart of mysterious Death Valley, California, 178 feet below sea level, on the home ranch of the Pacific Coast Borax Company, one mile west of Furnace Creek Inn. Death Valley is within three hours of Las Vegas, Nevada (gateway to Boulder Dam and Death Valley), on main line Union Pacific. Tanner Tour auto from Furnace Creek Ranch will meet guests at Las Vegas, by appointment, and deliver to Ranch, for which the charge is \$15, each. Also reached via Union Pacific eastbound from Los Angeles to Crucero, Calif., then Tonopah & Tidewater R. R. to Death Valley Jct., and Tanner Tour auto to ranch for which auto rate is \$4 per person.

*Accommodations:* Furnace Creek Ranch is undoubtedly the strangest ranch on earth, a "Garden of Allah" in the most picturesque desert in the world. Here are found comfortable cabins in an unusual setting adjoining the date palm gardens and golf course. Ranch store has restaurant, soda fountain, and recreation rooms.

*Activities:* Not a place for resting and sight-seeing only, though one may indulge in both to their heart's content basking in the golden glow of the Valley's balmy winter sun. Here also are facilities for the sports lover to play his or her favorite game, under ideal conditions—bracing air, dry and clear, at sea level. A sporty 9 hole golf course, all grass greens and fairways, in the heart of the desert 200 feet below sea level. Tennis courts and outdoor swimming pool available at Furnace Creek Inn. Saddle horses at ranch for brisk morning canter over the desert floor or for longer trips into near-by mountains. Intriguing trails challenge the hiker. Auto tours at nominal rates to all parts of Death Valley including Scotty's Castle. Informal entertainment.

*Rates:* Cabins, European plan, with bath, \$3.50 per day, single; \$5.00 per day, double; \$7.50 per day, three persons. 10% discount for stays of seven or more days. Special rates by month quoted on request. Ranch restaurant serves excellent meals: Breakfast 75c, Lunch 85c, Dinner \$1. Also a la carte service. For further information and literature write Death Valley Hotel Company, Ltd., 409 West Fifth St., Los Angeles, California.

## GLENN RANCH *Brand A*

*Location:* Large ranch resort in Lytle Creek Canyon of the beautiful Sierra Madre Mountains, 20 miles from San Bernardino, Calif., the nearest station on the Union Pacific main line. Los Angeles only 2 hours away.

*Accommodations:* Spanish tile buildings, with or without private baths. Electric lights. Rustic cafe. European and American plan. Housekeeping cabins on the banks of Lytle Creek at very reasonable prices. Swimming pool and completely stocked store. Ranch has its own dairy herd, vegetables and fruit.

*Activities:* The host and hostess organize parties for hiking and riding to the many beauty spots in the vicinity. Dancing, tennis, badminton, swimming. Golf course at San Bernardino.

*Rates:* American plan, \$31.50 to \$44 per week. Housekeeping cabins, \$10 to \$25 a week. Round-trip stage fare from San Bernardino, \$2. Season, April to December. Write Seymour Tally, Glenn Ranch, California.

## McCARTHY'S GUEST RANCH

*Location:* In a large valley at the foot of Bell Mountain on the Mojave Desert, seven miles east of Victorville, in San Bernardino County, on main line Union Pacific Railroad. Ranch car will meet guests by appointment at station in Victorville without charge.

*Accommodations:* Limited to 20 guests. Main ranch house of low bungalow style has a large living room, dining room and five bedrooms. Most rooms are with connecting



## McCARTHY'S GUEST RANCH (continued)

shower and toilet; comfortable heat in winter, all rooms have cross-ventilation, and doors leading outside. A homelike informal atmosphere. Meals served family style from butter, eggs, milk, buttermilk, goat's milk, chickens, rabbits, squabs produced on ranch.

*Activities:* Horseback riding, natural bridle paths or open country or into the mountains. A popular sport originated at this ranch is chasing jackrabbits at night with greyhounds and whippets by auto. Quail and dove may be hunted in season. Sun bathing the year 'round. Guests may join in ranch work if they desire.

*Rates:* \$25 per week, single; \$40 per week, double. Children under six half rate. No extra charge for horseback riding or other sports. Write McCarthy's Guest Ranch, Victorville, California.

## NORTH VERDE RANCH

*Location:* One mile from Victorville, San Bernardino County, California, on the Mojave River. Reached by Union Pacific to Victorville; 100 miles from Los Angeles; 42 miles from San Bernardino.

*Accommodations:* Comfortable adobe ranch house. Rooms with bath. Hot and cold water. Electric lights. Heat in each room. Good wholesome ranch food. Ranch has its own dairy, poultry and vegetables. One hundred foot swimming pool.

*Activities:* Horseback riding, hiking, duck hunting and other small game in season. Good library. Dancing; swimming; beautiful flowers.

*Rates:* Per week room and board single \$30; double per person \$25; per month, four weeks, room and board \$100 single or double per person. No extra charge for use of riding horses two hours daily. Fishing, swimming and boating free. Only a limited number of guests will be accepted. For further information or reservations address North Verde Ranch, City Office, 1112 Chapman Building, Los Angeles, or direct to North Verde Ranch, Victorville, California.

## PIERSON DUDE RANCH *Brand B*



*Location:* Wonder Valley, west slope of the Sierra Nevada Mountains, just west of General Grant National Park and Sequoia National Park (Big Trees), near the Kings River Canyon on Arroya del Molino (Creek of the Mill) at the base of the famous Dalton (bandit) mountain in the Digger Indian country. A cattle and horse ranch of fifty years' standing. Railroad point is Fresno, Calif., 35 miles from ranch.

*Accommodations:* In the big ranch house, which has all modern conveniences, rooms with or without private bath; also rustic cabins with stone fireplaces, private tub or shower baths, hot and cold water, etc. Perfect sanitation. Natural swimming pool in the Kings River. Our own dairy herd of Guernsey cows supplies fresh milk, cream and butter. Vegetable garden; poultry; fresh fruit in season served at our table. Meals served country style; first-class cook.

*Activities:* Horseback riding is our principal activity; swimming, canoeing, trout fishing, skeet shooting, hunting in season, archery, mountain climbing. If desired, guests can participate in all our regular western ranch activities. Over-night pack trips, and day horseback picnic trips; longer pack trips with guide, cook and horse wrangler can be arranged.

*Rates:* American plan, \$42 single, \$70 double per week without private bath; \$49 single, \$91 double per week with private bath; including meals and the exclusive use of a saddle horse. Low monthly rates for boys on request. Guests met at Fresno and conveyed to ranch and return for a charge of \$5. Open all year. Pierson Dude Ranch, Del Piedra, California. *California's Pioneer Dude Ranch.*





*The Desert environment of Nevada and California ranches defies description—it must be experienced.*

*Rustic Mountain lodges offer places to "rough it," comfortably and inexpensively.*





# Camps—Guides—Lodges—Resorts

*The following group of outfits are classified under this head to distinguish them from the regular dude ranches which are home operating stock or grain ranches with accommodations for guests on advance reservations. In this group will be found cabin camps, experienced and bonded guides, excellent mountain lodges, and rustic resorts. They are qualified by experience and equipment to provide western recreations such as camping and pack trips, hunting parties under guide, fishing, horseback riding, and similar outdoor activities. These outfits are well recommended by their former guests.*

## In The Jackson Hole Region

### DIAMOND DOUBLE L OUTFIT *Brand*

*Note: A "dude outfit" having the saddle and pack horse concession in Grand Teton National Park.*

**Location:** Shore of Jenny Lake, Grand Teton National Park; at the foot of the Grand Teton peaks. Victor, Idaho, is the nearest railroad station. Bus service from Victor direct to our office.

**Equipment and Activities:** The Diamond Double L conducts long and short horseback trips and overnight pack trips into Grand Teton Park; also big game hunting trips into the adjoining territory. All desired types of trip are planned—one hour, one day, an all-summer pack trip, with guides experienced in mountaineering. Sturdy, well-broken mountain horses and gentle ponies for children.

**Special Educational Trips:** Commencing July 6 we will conduct a seven-day pack trip each week throughout July and August. A naturalist guide will accompany parties to explain the natural features of the country—geology, botany, zoology and the history of this most beautiful section of the West.

Each evening around the campfire there will be a lecture about the things seen during the day, then music and tales of the West by the cowboys accompanying the party.

Choose the week most convenient to you and write for further information. Each party limited to about 20 people.

**Rates:** Write to A. C. Lyon, Diamond Double L Outfit, summer address after June 1st, Jenny Lake P. O., Wyoming, winter address Tetonia, Idaho.

## JACKSON LAKE LODGE

**Location:** One mile north of Moran P. O., and 23 miles south of Yellowstone Park, 14 miles north of Grand Teton National Park, overlooking Jackson Lake and commanding splendid views of the majestic Tetons. Convenient both to Yellowstone and Grand Teton National Parks, it is preferred by many as a central location for persons spending some time in either or both of the Parks. It is served by daily buses to and from Yellowstone Park. Most easily reached via Union Pacific to Victor, Idaho, thence via Teton Transportation auto stage to Moran; or by Yellowstone Park bus via West Yellowstone. Daily bus service to and from Victor, Idaho, round trip fare \$12.00.



**Accommodations:** Central lodge and a number of one, two and three-room rustic log cabins, well furnished and thoroughly comfortable, accommodate 100 persons. All cabins have hot and cold running water; some have bath and toilet. Central bath facilities available without charge to those in cabins without bath. Excellent food served in the central dining room overlooking the lake and Grand Teton Mountain range; individual service is featured.

**Activities:** Excellent lake and stream fishing, hiking, horseback riding and motoring. Saddle horses, motor boats, rowboats and automobiles may be hired. Auto tour of Grand Teton National Park, \$3.00 for one; \$2.50 per person when two or more.



## JACKSON LAKE LODGE (continued)



*Rates:* Meals for transients, breakfast, \$1; luncheon, \$1; dinner, \$1.25. American plan, without bath, per person, \$5.50 a day; \$35.00 a week. Rooms with bath, per person, \$8.00 a day or weekly per person, \$50.00. Further information from Jackson Lake Lodge, Moran P. O., Wyoming. Season June 15 to Sept. 15. Manager, Guy Robertson, Moran, Wyo.

## LEEK'S CAMP *Brand*

*Location:* East shore of Jackson Lake, at base of the Tetons, between Grand Teton and Yellowstone Park. Daily auto stages from Victor, Idaho, and Rock Springs, Wyoming.

*Accommodations:* New central lodge and dining room. Private log cabins furnished to suit. Well-selected, appetizing meals. Telephone service.

*Activities:* Excellent trout fishing. Horseback trips to summer range of hundreds of elk; many moose may be seen. Motor and row boats. Saddle and pack horses. Bear-hunting parties, May 15th to June 15th; other big game during fall season.

*Rates:* On application. Write Manager of Leek's Camp, Jackson, Wyoming.

## MOOSE HEAD RANCH *Brand*

*Location:* On Spread Creek, 28 miles north of Jackson, Wyoming, at Elk P. O. Grand Teton National Park is about 10 miles west of ranch. Reached by auto stage from either Victor, Idaho, or Rock Springs, Wyoming, both on Union Pacific.

*Accommodations:* Dining room and kitchen in one building; a ranch lobby; separate sleeping cabins of one and two rooms. Hot and cold tub and shower baths. Mrs. Topping is hostess and her garden and poultry departments are show places. Ranch has its own dairy.

*Activities:* Gentle saddle horses for each guest. Fishing, sight-seeing and hunting trips arranged on short notice. The manager, Fred J. Topping, a big game guide in the Jackson Hole Country of over 20 years, specializes on bear hunting in the spring. Winter guests accommodated.

*Rates:* Summer rates at Moose Head Ranch, \$35 per week for board, lodging, and use of saddle horse. \$25 per week without the use of saddle horse. Rates for big game hunting in the fall, and for spring bear hunting on request. Fred J. Topping, Moose Head Ranch, Elk P. O., Jackson Hole, Wyoming.

## STS RANCH *Brand* STS



*Location:* One mile from Moose, P. O., 13 miles north of Jackson, Wyoming. Situated on Snake River in a thickly wooded country about 3½ miles from Grand Teton National Park. Reached via Victor, Idaho on the Union Pacific or from Rock Springs, Wyo., on the Union Pacific's main line. Bus service from Victor or Rock Springs over scenic highways. The Ranch is also reached from Union Pacific station at West Yellowstone, Montana, and motor through Yellowstone National Park to Moran and Moose, P. O.

*Accommodations:* Fully furnished and heated cabins. Hot and cold water at all times. One and two-room cabins accommodating from one to four persons. Meals are served at main cabin. Ranch has its own garden, cows, chickens, spring water and ice supply. Its altitude is 6,400 feet.

*Activities:* Horseback riding along beautiful trails in Jackson Hole and Grand Teton National Park. Swimming and fishing. Big-game hunting in season.



## STS RANCH (continued)

*Rates:* \$20 per person per week; \$3.25 per person per day; includes cabin and meals, but not saddle horse. Special rates for families.

Address, STS Ranch, Moose P. O., Jackson Hole, Wyo.

## TETON LODGE

*Location:* Moran, Wyoming, gateway to Grand Teton National Park and 24 miles south of Yellowstone National Park. Reached by auto stage from Victor, Idaho, or Yellowstone bus service from West Yellowstone, Mont. Daily bus service to and from Victor, Idaho, round trip fare \$12.00. Season June 10 to November 15.

*Accommodations:* Separate cabins accommodate 200 persons. Running water, baths, electricity. De luxe cabins have sitting room, private shower and toilet. Housekeeping cabins. Fine meals in central dining room.

*Activities:* Horseback riding, photographing, fishing, boating, big-game hunting. Pack trips outfitted, also hunting parties, led by competent guides. Motor boats for hire. Big game season, September 15th to December 1st. Fishing and hunting licenses.

*Rates:* Meals and lodging, \$4.00 a day, single; \$7.50 a day, double. De luxe cabins, \$6.00 a day, single; \$11.00 a day, double. Housekeeping cabins (lodging only, no meals), \$1.50 a day, single; \$1.75 double. Meals for transients, breakfast \$0.75, lunch \$0.85, dinner \$1.

Saddle horses, \$3 a day; \$12 a week.

Rates furnished on application for pack trips or big-game hunting trips.

For illustrated folder or reservations, write or wire Teton Lodge, Moran, Wyoming. Guy Robertson, Manager.

## TRIANGLE F RANCH *Brand* ▽

*Location:* A stock ranch on the Hoback River in the southern part of Jackson Hole, surrounded by the Gros Ventre and Hoback mountains. Elevation 6,600 feet. Guests met by appointment at Victor, Idaho, or Rock Springs, Wyoming. Round trip transportation from Victor to the ranch is \$15; from Rock Springs to ranch by stage \$10.

*Accommodations:* Ranch headquarters consist of a main lodge with separate cabins for about 25 guests. Modern accommodations, hot and cold water, shower baths. Excellent meals in lodge dining room. Recreation room; large fire place, electric lights. Pure spring water. Simple comforts of a Rocky Mountain ranch life.

*Activities:* Horseback trips; regular camping trips to mountain lakes and trout streams. Good fishing on the ranch. A big game hunting camp in season. Special Antelope hunting parties arranged. Satisfactory shots guaranteed. Rates on request.

*Rates:* \$35 a week including use of saddle horse. For reservations write W. E. Hiatt, Triangle F Ranch P. O., Wyoming.

## TURPIN MEADOW LODGE

*Location:* On Buffalo River, 20 miles east of Moran, Wyo., in edge of forest at foot of Continental Divide, Jackson Hole. Operated by owners of Triangle X Ranch and served by Union Pacific through Victor, Idaho. Daily bus service Victor to Moran.



## TURPIN MEADOW LODGE (continued)

*Accommodations:* Single and double new log guest cabins; central bath house with hot and cold showers; large rustic dining room serving splendid home cooked meals, fresh vegetables and fruits in daily menu. Local and long distance phone. Accommodations for additional guests on camping and pack trips.

*Activities:* Plenty, for the entire family. Lake and stream fishing. Horseback riding; summer pack trips to regions untouched by civilization. Big Game Hunting: spring bear May 15 to June 15; fall season for moose, elk, deer, sheep and bear, Sept. 15 to Nov. 15. Hunting and pack trip equipment the best: waterproof tents, sleeping bags, saddles and strong range bred horses.

*Rates:* Write or wire Turpin Meadow Lodge, Moran, Wyo.

## V BAR V RANCH *Brand* V—V

*Location:* Hoback Basin, 30 miles southeast of Jackson, on the Rock Springs-Yellowstone Highway. Reached in a few hours from Rock Springs, Wyoming or Victor, Idaho.

*Accommodations:* Main ranch building and comfortable cabins adjacent for 30 guests; large open fireplace; bath; complete comfort. Variety of fresh foods, home cooking. Natural informal ranch life affording all essentials.

*Activities:* Fine fishing in near-by streams. Each guest has use of a saddle horse; children taught to ride; trips to Ramshorn Peak and Hot Springs on week-ends, daily trail trips. Good hunting in season for elk, mountain sheep and deer. Swimming pool at natural mineral hot springs nearby.

*Rates:* \$35 a week each; children under 12, half rates. Write or wire Frank E. Van Vleck, V Bar V Ranch, Jackson, Wyoming, for reservations.

# Snowy Range Region

## BROOKLYN LODGE

*Location:* Near timberline in the Snowy Range. Eight miles from Centennial and 40 miles from Laramie, Wyoming. Reached via auto stage of L. N. P. & W. R. R. to Centennial, from Laramie, where Mr. Jones will meet you with a car.

*Accommodations:* Twenty log cabins, commanding a view of grassy, pine-encircled slopes; some have two or three rooms; all electric lighted and equipped with stoves and comfortable beds. Bath houses with hot and cold showers. Large central hall where guests may dine and dance; living room with cheerful fireplace.

*Activities:* The Great Medicine Bow National Forest, intersected by marked Forest Service trails, surrounds the lodge. A hundred lakes and as many trout streams make the Snowy Range country a fisherman's paradise. Guides and saddle horses at reasonable rates.

*Rates:* \$20 a week, or \$3 a day, including cabin and board. Children under 10, half rates; under 4, no charge. Write to H. D. Jones, Brooklyn Lodge, Centennial, Wyoming.

## LIBBY LODGE

*Location:* Barber Lakes, three miles from Centennial and 32 miles from Laramie, Wyoming.

*Accommodations:* Rustic lodge with 18 sleeping rooms and cabins to care for eighty guests. A large lobby, dance hall, dining room; hot and cold running water in all rooms, baths, and new equipment throughout. Electric lights.



## LIBBY LODGE (continued)

*Activities:* Trails radiate from Lodge into virgin forests, where in season bear, deer, and other game may be hunted. Situated on Libby Creek with excellent trout fishing.

*Rates:* American plan, single \$2.50 per day; double \$4.50. For weekly or monthly rates and other information write: Mrs. Jean Gibbons, Libby Lodge, Centennial, Wyoming.

## MEDICINE BOW LODGE

*Location:* In the Snowy Range on the western slope of the Medicine Bow National Forest. On the famous Snowy Range Highway 60 miles from Laramie, eighteen miles southeast of Saratoga, Wyoming. Elevation, 8,000 feet. Guests met at Laramie, Walcott or Saratoga, Wyoming, nearest Union Pacific stations, upon request.

*Accommodations:* Twenty-six cabins single and double for 150 guests. Bath house with hot and cold water; first-class sanitation. Daily menu includes fresh butter, eggs, milk, vegetables and choice meats.

*Activities:* Fishing, horseback riding, mountain climbing are the chief attractions. There are three fine trout streams within walking distance of the lodge. Special pack trips to the Snowy Range, with skilled guides who do all the cooking and handle the horses. The 100 small but beautiful lakes in the vicinity are crystal-clear, and full of graceful, darting trout. The skillful angler easily catches his limit.

*Rates:* Weekly, including board, \$24 in cabins. Daily, American plan, \$3.50. Guides, \$5 a day; saddle horses \$2.50 a day. Address Plummer & Co., Prop., Medicine Bow Lodge, Saratoga, Wyo.

## SKYLINE RANCH FOR BOYS *Brand H*

*Location:* Upper Platte River Valley, between the Continental Divide and the Medicine Bow Range, adjoining the Medicine Bow National Forest near the Colorado line. Reached via Union Pacific to Wolcott, Wyoming, thence 56 miles by ranch auto to Skyline. 8,000 feet elevation.

*Accommodations:* Large, substantial log buildings: lodge, bunkhouses and bath house, trading post, stables and corrals; water and lighting systems; phone and daily mail service. Built especially for boys—yet on the edge of the wilderness. Enrollment is limited to 20 boys.

Parents can be comfortably accommodated at Sky Meadows Ranch, 4 miles distant. See description on page 18.

*Activities:* In addition to regular ranch activities, camping trips are conducted through the surrounding scenic country. Each boy is furnished a good horse for his exclusive use. The owner and director is a native of Wyoming; the leaders are most carefully chosen for sterling character and Christian ideals. This ranch is splendidly equipped to give any red-blooded boy a new realization of true pioneer American life at its best.

*Dates and Rates:* Spring Season: Auto camping trip through Yellowstone and Grand Teton National Parks and Jackson Hole, June 15th to 29th, inclusive; limited to 10 boys, \$75. Regular Summer Season: June 29th to August 24th, \$400. Fee includes transportation between the railroad (Wolcott, Wyo.) and the ranch, laundry, cowboy outfit, and use of all necessary trail equipment. Post Season: Pack trip into an unusually rugged and inaccessible region of the Rockies, Aug. 24th to Sept. 6th. Limited to 10 boys, \$75. Hunting season follows. Boys welcome for winter season, also. Write Cliff Higby, Director, Skyline Ranch for Boys, Encampment, Wyoming.



# Colorado Region

## ALLSEBROOK CAMP FOR GIRLS

*Location:* Seven miles southwest of the village of Estes Park at Mountainside Lodge, on the border of the Rocky Mountain National Park, one of the most beautiful sites in the Rocky Mountains. Girls arrive by bus from Union Station in Denver, seventy-five miles away. Take Union Pacific Streamliner "City of Denver" to Denver.

*Accommodations:* Beautiful stone and log lodge. Comfortable sleeping cabins, housing about fifteen girls and counsellors each. Electricity, telephone; hot and cold water, shower and tub baths—a registered nurse on duty. The Camp serves excellent food and has pure tested mountain water.

*Activities:* Informal days are filled with horseback riding, art work, dancing, music, tennis, swimming—all kinds of games—pack trips and automobile trips. Groups go to Frontier Days at Cheyenne, and to Central City Pioneer Opera House. All camp life is under most careful supervision by trained interested adults.

*Rates:* The Camp accepts sixty girls, satisfactorily recommended, from 6 to 20 years old. For a term of eight weeks the fee is \$350. Parties are chaperoned from several eastern cities. Write to Mrs. Bertha Allsebrook, Fort Lupton, Colorado. After June the address is Estes Park, Colorado.

## BAR IL RANCH *Brand* —IL

*Location:* A summer camp for boys, situated on the Bar IL horse and cattle ranch in the scenic Rockies, two miles east of Tabernash and eighty-six miles west of Denver, Colorado. Reached via Union Pacific to Denver, thence D. & S. L. Ry. to Tabernash.

*Accommodations:* Spacious lodge, dining room and sleeping quarters in separate buildings of log, stone and slab construction, equipped with hot and cold running water, electric lights, shower baths and modern sanitation. Kitchen furnished with a modern hotel size electric refrigerator. Wholesome meals from ranch grown vegetables, poultry, meats, milk, butter and eggs. Telephone, telegraph, daily mail. Physician in attendance.

*Activities:* Horsemanship, athletics, archery, riflery, nature study, camp-craft, angling. Swimming, hiking, pack trips and auto tours. Fishing in three mountain streams on ranch. A horse for every boy. Cheyenne "Frontier Days" for each full season camper at no extra cost.

Boys 7 to 17—season July 2nd to August 27th, eight full weeks.

*Rates:* For complete information and descriptive booklet address Lester J. Carson, Bar IL Ranch, Tabernash, or W. Henry Johnson, 305 So. Emerson Street, Denver, Colorado.

## BYERS PEAK RANCH FOR BOYS, INC.

*Location:* In Middle Park, Colo., one mile southwest of Fraser, Colo., in St. Louis Valley. Altitude 8,600 feet. Seventy-eight miles west of Denver. Take Union Pacific to Denver, then D. & S. L. R. R. to Fraser, Colo., where ranch car will meet boys.

*Accommodations:* Native log buildings, ample in size, comfortable, and with modern sanitation. Forty year old log ranch house, barns, craft shops, play rooms, and shower baths. Accommodations for only 28 boys, 8 to 17 years.



## BYERS PEAK RANCH FOR BOYS (continued)

*Activities:* Each boy is assigned a horse of his own for the season. Swimming, craft-work, hikes to snow-capped peaks, pack trips, auto tours, and athletics. Program features selective.

*Rates:* Season, June 24th to Aug. 26th. Three, six, and nine week terms. All expenses inclusive, covering laundry, trips, use of horses, etc. Single week \$35; Three week period, \$100; Six week period, \$195; Nine week period, \$290.

For further information, address J. G. Arnold, Director, % Tours Hotel, Denver, Colo., until May 15th; after May 15, Fraser, Colo.

## CAMP CHIEF OURAY

Conducted by the Boys' Division of the Denver Y.M.C.A.

Opens 30th season on June 19

*Location:* On a beautiful spot at the edge of the forest on the Colorado River, four miles from Granby and 12 miles from Grand Lake, near the Circle Road from Denver to Estes Park. Altitude is 8,000 feet. Take Union Pacific to Denver where boys will be met by Camp bus.

*Accommodations:* Beautiful new recreation hall especially suitable for games and programs. Big fireplace, stage and special lighting effects, accommodations for 26 guests on second floor. Main lodge in which is located dining room, fireplace, kitchen with refrigeration and all modern conveniences. Second floor accommodations for 20 guests. Each cabin accommodates seven or eight boys and leader; individual spring bunks and mattresses, dry, clean and sanitary. A well equipped hospital. Hot and cold showers. Pure mountain drinking water. Telephone, telegraph, daily mail.

*Special Feature:* String of 40 thoroughly broken, reliable, saddle horses for use of boys in camp under a system which assures an equal amount of riding for all.

*Other Activities:* All the activities and life of a first rate boys' camp. Nature Study, museum, library, athletic field, tennis courts, archery and rifle range, swimming, boating, hiking, devotional activities. Camp workshop and arts and crafts building.

*Rates:* For illustrated brochure giving complete information, rates, and application, address Leslie S. Deal, Camp Director, % Y.M.C.A., Denver, Colorado.

## CAMP LEWIS E. LEMEN, *Denver Council, Boy Scouts of America*

*Location:* On the banks of Clear Creek, in the Pike National Forest, five miles above Silver Plume, Colorado, and sixty-five miles from Denver over fine mountain highway. Boys met at Denver by Camp Bus—no charge to camp.

*Accommodations:* Large central Mess Hall, with seating capacity of over two hundred, with modern kitchen adjoining; cabins with built-in bunks to accommodate eight boys to a cabin; shower house with hot and cold running water; museum and library; First Aid Station completely equipped to care for minor injuries or illness; Handicraft Lodge equipped for work in leather, metal, and various crafts; photography dark room. Meals include fresh vegetables, fruit, and milk; menus worked out by expert dietitian.

*Activities:* Supervised program of Scouting activities; hiking; camping; fishing; nature study classes; photography; handicraft projects of various kinds; Camp Fire program each evening in outdoor Council Ring.

*Rates:* For complete information, rates, season, etc., address E. E. Skinner, Denver, Council, 318—14th Street, Denver, Colo.



## CHELEY COLORADO CAMPS *Brand* ☉

*Location:* Home of Cheley, Private Summer Camps for Boys and Girls only. No accommodations for adults. Six miles south of Estes Park Village at the edge of Rocky Mountain National Park. Seventy miles from Denver; altitude 8,000 feet; cool, dry and invigorating climate.

*Accommodations:* Each of the series of six camps is built of stone and logs, commodious, comfortable, with modern sanitation. Each camp has separate lodge, play fields, sleeping cabins, infirmary, baths and showers, craftshops, etc., and is suited for the age and sex for which designed.

*Activities:* Supervised camp life insures every day filled with fun. Instruction in athletic games, campcraft, archery, forestry, horsemanship, Indian lore, swimming, hiking, fishing, pack trips, and auto tours. All athletic sports and hand crafts. 14 successful summers.

*Rates:* Boys and girls from 7 to 21 accepted; each Camp separate according to age and sex. 2 five week terms with a 2 week post season period offered. There will be organized parties under escort from New York, Chicago, St. Louis, Kansas City; from Texas, Oklahoma and other sections. For complete information and beautiful pictorial catalog address F. H. Cheley, 601 Steele St., Denver, Colorado, until June 1st; thereafter, Estes Park, Colo.

## CAMP SHOSHONI *Brand* ☾

(Camp for Girls during July-August. Adult Guests June and Sept.)

*Location:* Forty miles northwest of Denver, near Rollinsville, Colorado. Union Pacific to Denver and D. & S. L. (Moffat Line) to Rollinsville. Campers and guests met by appointment. Altitude 8,000 feet. Beautiful scenery. Trails in all directions.

*Accommodations:* Attractive, rustic buildings. Lodge has dining room, pantry and kitchen equipped with modern conveniences. Excellent food. Cabins contain two large rooms and connecting bath with showers and modern sanitation. Spring water. Delco system has 2,500 watt capacity. Daily mail.

*Activities:* Under direction of trained counselors. Horseback riding, swimming, canoeing, dancing, dramatics, archery, riflery, tennis, basketball, games, nature study, hiking and crafts.

*Rates:* Eight week camp season limited to forty girls, ages 9 to 19. All inclusive fee \$250. Pre-season and post-season guests \$20 per week. References required. For complete information address the Directors: Fannie Carter Barnhart and Mrs. Edward Brodnax Lewis, 7117 Maryland Avenue, St. Louis, Mo.

## DOUBLE M RANCH *Brand* M

is unique among resorts. Rustic as you please—offering real Western hospitality; yet with those conveniences and luxuries that make modern life worth living . . . A great log hotel with huge fireplaces—comfortable bedrooms; and four surrounding cottages, near enough to the hotel for convenience—remote enough for privacy and quiet. Electric lights, heat, hot and cold water, shower baths, telephone service, daily bus and mail. Bus fare from Boulder, Colo., to Ranch \$1.25. Convenient to Estes Park, the Glaciers, Pikes Peak and Cheyenne. Just 40 miles from Denver. If it is rest, mountain air, Colorado sunshine—riding, fishing and the relaxation of enjoying something entirely different in a vacation, that you seek—come to Double M.

*Rates:* On application. For information: Florence C. Molloy, 1019 Spruce St., Boulder, Colorado.



## DOUBLE V RANCH *Brand—VV—*

*Location:* On slopes of Sangre de Cristo Range, adjoining San Isabel National Forest. 8 miles from Westcliffe, 60 miles from Pueblo. Ranch car will meet guests at Pueblo. Convenient connections to and from Union Pacific trains at Denver.

*Accommodations:* Large western ranch house, containing living, recreational and dining rooms; seven bedrooms; two baths complete with shower and tub. Cabins with or without private bath, running water in each. Electricity throughout. Good, home-cooked food. Daily mail, telephone, telegraph and radio. Accommodations for fifty guests.

*Activities:* Large *elective* camp program with staff of counsellors. Daily riding, all athletic sports, dramatics, swimming, and fishing. Trips to rodeos. Arts and crafts. *All activities are optional.*

*Rates:* Camp fee \$350 includes eight and one-half weeks, all activities, transportation to and from Pueblo. *Limited to twenty boys and girls (13 to 21 years).* (From New York, group escorted, and travel via Union Pacific, all-inclusive fee of \$500.) References required. Write Manager, Double V Ranch, Box D, Westcliffe, Colorado.

## LODGE OF PINES *Brand P*

*Location:* Sixty-five miles from Denver and thirty miles from Boulder. It is four miles from the historic old mining town of Ward famous for its gold and silver production. Situated on a high mesa overlooking a sparkling mountain lake it commands a superb view of the Continental Divide to the west and of the boundless plains to the east. There is daily motor bus service from Boulder, Colo., on the Union Pacific.

*Accommodations:* The Lodge is not "just another resort" but one especially designed for discriminating guests. The unsurpassed beauty of its location, the artistic main building and the rustic cabins equipped with hot and cold running water, electric lights, stove and twin beds make it unique in many respects. The table is provided with an abundance of milk and cream from our own ranch and fresh fruit, meat and vegetables.

*Activities:* While riding is the chief diversion there is ample entertainment for those who prefer less strenuous activity. Swimming in the lake, fishing in the near-by streams and lakes high up on the Divide, hiking, mountain climbing or motoring over the wonderful roads which lead through the mountains in all directions.

*Rates:* From \$30 to \$50 each per week American plan. Since only thirty guests can be accommodated satisfactory references are required. For further information write Lodge of Pines, Ward, Colorado.

## QUARTER CIRCLE H RANCH *Brand H*

*Location:* At Woodland Park, 25 miles west of Colorado Springs, Colorado, via Ute Pass Road. Convenient connections at Denver with Union Pacific trains.

*Accommodations:* For boys and girls, 13 years of age and older. Rustic log main house, cheerful fireplace, cabins for boys and girls at different locations on ranch grounds. Home grown vegetables, ranch milk and abundance and variety of good food, supervised by a dietitian.

*Activities:* Large *elective* program, optional with each camper. Staff of trained counsellors including nurse or physician. Daily riding and pack trip to Pikes Peak. Athletics, rifle range, fishing. Swimming and boating nearby. Weekly auto trips to points of interest—Cripple Creek gold mines, Pikes Peak, Cave of the Winds, Cliff Dwellings, Manitou Springs; semi-weekly trips to Colorado Springs Little Theatre, Fine Art Center. Golf and tennis arranged. Rodeos. Western riding among cattle of the ranch, branding, etc.

*Rates:* Camp fee for eight weeks including above activities and transportation to and from Colorado Springs . . . \$300. (From New York City, all inclusive fee which includes rail



## QUARTER CIRCLE H RANCH (continued)



transportation via Union Pacific . . . \$500 for the entire summer). References required. Non Sectarian. For booklet write Director Lee U. Hermann, 2030 Oak Way, Colorado Springs, Colo., or care Union Pacific offices at 521 Fifth Ave., New York City.

## RALSTON CREEK RANCH *Brand*

*Location:* A horse and cattle ranch in the mountains 30 miles northwest of Denver. Union Pacific guests met at Denver by appointment and transported to ranch without charge. Altitude from 7,650 to 8,900 feet. Ranch consists of 1,450 acres of mountain pasture, heavy timber, with 5 miles of three mountain streams on the property.

*Accommodations:* Buildings are main ranch house, log houses for dormitories and classrooms; stables and corrals. Hot and cold running water, shower baths, comfortable beds, all conveniences are provided. Home-cooked meals, fresh ranch foods.

*Activities:* Ranch organized to provide summer outing activities for boys and girls, and adults, of all ages. Expert tutoring available to those who desire it. No emphasis on "roughing it." The primitive life, if desired, is found on trips away from ranch. Each guest provided with saddle horse. Exploring and fishing trips; swimming; hiking, tennis, games and activities to suit the needs of all. Informal evening entertainment. Ranch counselors are experienced college men with successful records. Stephen B. Strang, Director, Princeton, '23, is a native Coloradoan.

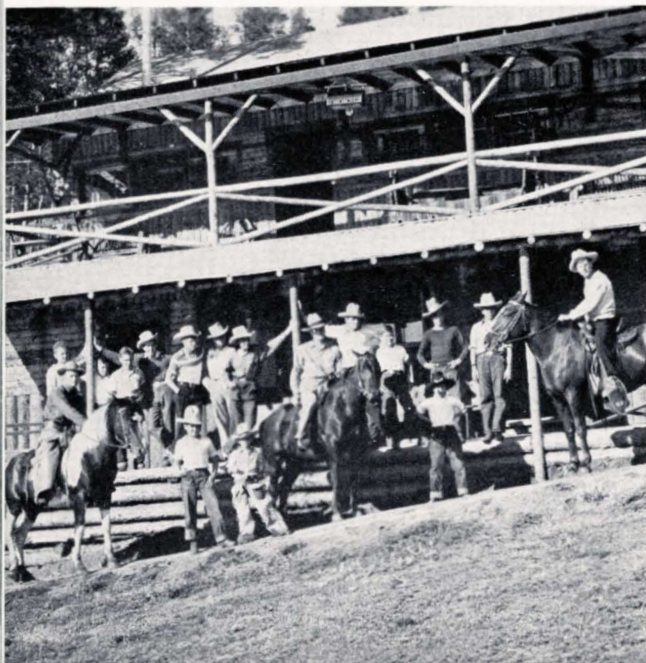
*Rates:* The Ranch Term runs for 13 weeks, beginning about June 20th and ending about Sept. 20th. Rates are from \$385 for an eight (8) weeks' stay. A winter term will be inaugurated in the fall of 1937. Prior to June 20th address Stephen B. Strang, New Hope, Pennsylvania; after that, Ralston Creek Ranch, Golden, Colorado.

## SHU—TAN—KA CAMP FOR BOYS *Brand*

*Location:* In the heart of the Rockies; 70 miles northwest of Denver; 39 miles northwest of Boulder; and 1 mile south of Allens Park; in full view of Longs Peak and other snow-capped peaks of Rocky Mountain National Park. Take Union Pacific to Boulder, Colo., where boys will be met.

*A Typical Boy's Lodge.*

*Your Home on the Trail.*





## SHU-TAN-KA CAMP FOR BOYS (continued)

*Accommodations:* For 100 boys; main lodge and dining room; little theater; hotel and cabins are all built of native logs with fire places, electric lights, hot and cold water, flush toilets, telephone and daily mail. Ranch grown vegetables, plenty of fresh milk from tested head of choice cows, good beds, cold fresh spring water from finest mountain springs high above camp and through pipes into all cabins and buildings.

*Activities:* Variety of outdoor sports and games under competent athletic director, athletic field equipped for track, archery, riflery, tennis, soft ball, volley ball also a fine nine hole golf course. Horseback riding under supervision of experienced equestrian and trail trips under his direction. Swimming in clear fresh pool. Trout fishing in near-by streams and lakes. Special trip to Cheyenne (Wyo.) "Frontier Days," late in July at NO extra cost.

*Rates:* Boys under 14—\$35 per week; \$250 for full 8 weeks. Boys over 14—\$37.50 per week; \$300 for full 8 weeks. Season opens June 22nd, closes August 18th. For information and booklet write L. L. Bowen, 5427 Rockhill Road, Kansas City, Mo., or Mr. G. A. Askling, 1200 Josephine Ave., Denver, Colo.

## THE KaROSE RESORT

*Location:* A secluded mountain retreat in Arapaho Nat. Forest on headwaters of the south fork of Colorado River, 15 miles northeast of Granby and 106 miles northwest of Denver. Reached via Union Pacific to Denver and D. & S. L. (Moffat Line) to Granby. KaRose auto meets guests at Granby by appointment at no extra charge.

*Accommodations:* Modern Guest Home with 23 spacious sleeping rooms and large dining room. Cottages in conjunction completely furnished for light housekeeping; electric lights, etc. Grocery store, laundry, telephone (listed as KaRose, Colo.), and daily mail. Management controls over 2,000 acres within the Arapaho Nat. Forest.

*Activities:* Good trout fishing in Lake Monarch and South Fork which flows through KaRose. Privately maintained hatchery for stocking purposes. Fine string saddle horses, tennis courts, bowling, billiards, dancing and cards. Beautiful Forest Service trails offer delightful opportunity for riding, hiking and mountain climbing.

*Rates:* Further information and rates from: The KaRose, Granby, Colo. From Nov. 1 to May 1 write to J. C. Stoller, 1901 Woodland Ave., Kansas City, Mo.

*"How much wood, would  
a Woodchuck, chuck?"*

*Amos (sitting): "Andy, how do you like this chain gang?"  
Andy (standing): "I'ze regusted, thas what!"*

*The one that  
didn't get away.*





# Idaho Region

## ALTURAS LAKE RANCH *Brand "46"*

*Location:* Adjoining beautiful Alturas Lake in a heavily timbered section, providing an abundance of shade and vegetation, at the foot of the Sawtooth Mountains. Elevation, 7,000 feet. 57 miles from Hailey, Idaho, and 45 miles from Ketchum, Idaho. Guests met at either Union Pacific station.

*Accommodations:* Rooms in main lodge, or in separate log cabins. Good, home-cooked meals served in typical, ranch family style.

*Activities:* Boating, swimming and horseback expeditions. Special two-week pack trips to Middle Fork of Salmon River, a wild and remote region offering unsurpassed trout fishing.

*Rates:* \$4 a day American plan. For detailed rates and reservations write H. W. Bradford, Hailey, Idaho.

## BIG SPRINGS INN

*Location:* Near Big Springs, Idaho, on the Yellowstone Park branch of the Union Pacific. Because of its nearness to West Yellowstone, the Inn is an ideal place to visit in connection with a Yellowstone Park tour.

*Accommodations:* Rustic log hotel and sleeping cabins. Hotel and dining-room service and light-housekeeping cabins. Telephone and telegraph.

*Activities:* A fishing, outing and hunting haunt, open June 1st to September 1st. Large and small game in season. Many points of scenic and historic interest are close by.

*Rates:* Inquiries for rates and reservations should be addressed to Hawley Hill, Mgr., Big Springs Inn, Big Springs P. O., Idaho.

## MACK'S INN

*Location:* On the Snake River, near Trude, Idaho, on the Yellowstone branch of the Union Pacific. Ranch car meets guests at station without charge.

*Accommodations:* The rustic but modern cabins accommodate 140 people. Inn serves good meals, using fresh foods.

*Activities:* Good fishing, boating, dancing, tennis, children's playground. Elk, deer and bear at Mt. Sawtelle, four miles away. Guides and saddle horses available. Pack trips arranged through the rugged game country north and west of Yellowstone Park.

*Rates:* Cabins from \$1.00 to \$5.00. Write to W. H. Mack, Mack's Inn P. O., Idaho.

## WYOMING RIDING CAMP *Brand J-Y*

*Sponsored by the Wyodah Ranch, Ashton, Idaho. See page 23.*

*Activities:* Western riding, fishing, swimming, woodcraft, exploring, and pack trips. We feature exploration trips and a horseback trip through Yellowstone National Park, via ranger trails. Membership limited to 20 boys of good character between ages of 13 and 18. Special small unit pack trips arranged for young men over 18.

*Rates:* \$300 for full season of eight weeks—July 1st to August 26th. Pre-season and post-season rates \$35 per week. Fee is all-inclusive. No extras except rail fare to Ashton, laundry and personal spending money. References exchanged. For reservations write: J. A. Young, Wyodah Ranch, Ashton, Idaho.



# Big Game Hunters Directory

THE dude ranch country along the Union Pacific provides as fine a "happy hunting ground" as will be found in the continental United States. Many of the ranches are so advantageously located that big game may be found within an hour's trip from the ranch. Others maintain fully equipped hunting camps in the wilder regions for those who prefer to take pack trips and "rough it." Competent guides guarantee successful hunts in these famous Rocky Mountain regions of Montana, Wyoming, Oregon and Idaho, where in season one may hunt grizzly, brown or black bear, elk, deer, mountain sheep and goats, moose and other game. As the season, license fees, game and limits differ in the various states and localities, hunters are urged to communicate direct with the ranches and outfits described in this book. The Union Pacific representatives listed on page 55 will be glad to furnish hunting information and arrange all details for the trip.

For accessibility, abundance of game, expert guides, excellent equipment, good service, and high type personnel, the following outfits are recommended:

RANCH	OUTFITTER	ADDRESS
A Bar A Ranch	Andrew Anderson	Encampment, Wyo.
A Bar H Ranch	A. J. Hogan	Encampment, Wyo.
Bar BC Ranch	Irving Corse	Moose P. O., Wyo.
Bear Paw Ranch	Jack Neal	Wilson, Wyo.
Big Minam Horse Ranch	Hudspeth Bros.	Cove, Ore.
Boyle's Ranch	Joe Boyle	Stanley P. O., Idaho
Cape Horn Ranch	J. R. Fox	Hailey, Ida.
CL Bar Ranch	E. S. Lauzer	Cora, Wyo.
CM Ranch	Chas. C. Moore	Dubois, Wyo.
Circle S Ranch	W. H. Showers	Cora, Wyo.
Crescent H Ranch	Gerald H. Brown	Wilson, Wyo.
Cross Quarter Circle	Bill Martzel	West Yellowstone, Mont.
DC Bar Ranch	John A. Dew	Kendall, Wyo.
Diamond G Ranch	Foster S. Scott	Dubois P. O., Wyo.
Elkhorn Ranch	Ernest Miller	Bozeman, Mont.
Elk Creek Ranch	Sam A. Trude	Island Park, Ida.
Flying A Ranch	Frank Dew	Daniel, Wyo.
Flying V Ranch	Jack Woodman	Moose P. O., Wyo.
Four S Ranch	A. R. Strong	Soda Springs, Idaho
GP Bar Ranch	S. D. Decker	Cora, Wyo.
Gros Ventre Ranch	David Abercrombie	Kelly, Wyo.
Haggin Ranch	W. L. Beal	Anaconda, Mont.
Idaho Rocky Mountain Club	C. W. Gillespie	Stanley, Idaho
Leek's Camp	S. N. Leek	Jackson, Wyo.
Lazy T Ranch	Chas. Oswald	John Day, Oregon
L. U. Bar Ranch	J. A. Shaw	Dubois, Wyo.
Mack's Inn	W. H. Mack	Mack's Inn P. O., Idaho
Moosehead Ranch	Fred J. Topping	Elk P. O., Wyo.
Pierson's Dude Ranch	Geo. W. Pierson	Del Piedra, Calif.
Robinson Bar Ranch	Chase A. Clark	Mackay, Idaho
Rocking NF Ranch	Ned Foster	Ketchum, Idaho
STS Ranch	Buster Estes	Moose P. O., Wyo.
Teton Lodge	Guy Robertson	Moran, Wyo.
T Cross Ranch	Robert S. Cox	Dubois, Wyo.
Triangle F Ranch	W. E. Hiatt	Triangle F Ranch P. O., Wyo.
Triangle M Ranch	H. L. McElroy	Cove, Oregon
Triangle X Ranch	J. C. Turner	Grovont P. O., Wyo.
Turpin Meadow Lodge	Reed S. Turner	Moran, Wyo.
Two N Ranch	L. O. McMichael	Dubois, Wyo.
V Bar V Ranch	F. E. Van Vleck	Jackson, Wyo.
White Grass Ranch	Harold R. Hammond	Moose P. O., Wyo.
Wyodaho Ranch	John A. Young	Ashton, Idaho





*Modern Air-Conditioned Standard Pullman Cars have Sections, Compartments and Drawing-rooms.*



*"Meals That Appeal" in Quiet Air-Conditioned Dining Cars. Special Menus for Children a New Feature.*

## First with the Finest—UNION PACIFIC—Serves All The West

THE Overland Route of the Union Pacific Railroad is a natural highway which was followed in the old days by immense herds of Buffalo and other big game, by the Indians, fur traders, explorers, Mormons, gold seekers, the Overland stage coach and the Pony Express. Today it is still the short, direct, scenic and historic route between Chicago and the Pacific Coast. Its historic landmarks, its scenic wonders from cool canyons to deserts can be enjoyed in complete air-conditioned comfort from your car window.

The Union Pacific continues to uphold its reputation as the *pioneer railroad* by pioneering innovations in transportation, ever aiming for increased efficiency, comfort and economy for its patrons. Whenever you travel via Union Pacific you are assured that your train will be the last word in travel comfort. Dining car service is of high excellence, with menus that appeal to every taste and, whether table d'hôte or a la carte meals are selected, the price is reasonable. Special children's menus are a new feature.

Fast, convenient service is available daily from Chicago, St. Louis, Minneapolis-St. Paul, Omaha and Kansas City to all the "Dude Ranch" regions described herein, and for the principal cities of the West, including Denver, Salt Lake City, Los Angeles, San Francisco and Portland. Eastbound the service is equally fine.

*Our representatives in Chicago, St. Louis or Kansas City, if notified in advance, will meet and assist adults, or boys and girls, in making transfers between stations.*

Travel by Union Pacific is more economical than driving one's own car. It is far safer and saves vacation time allowing you more care-free days on the ranch of your choice.

Union Pacific travel experts and officials listed on the opposite page will be glad to help you plan every detail of your "dude ranch" vacation. Low summer rail fares and Pullman charges are definite. Sample dining car menus and prices will be shown you. Ranch rates, and just what they cover, are at hand. Transportation charges between station and ranch, if additional, are known. Incidentals are, of course, up to you, otherwise your vacation costs can be planned in advance. *Invest in a dude ranch vacation this summer.*





*Union Pacific Club and Observation Cars are Popular Rendezvous—Radio, Library and Cocktail Hour—Barber, Valet and Bath.*

*Club-Observation Cars Afford Hours of Comfort for Relaxation, Meditation, or Making New Acquaintances.*

## Union Pacific Travel Headquarters

Aberdeen, Wash. . . . 3 Union Pass. Sta., K and River Sts.  
 Astoria, Ore. . . . Foot of 11th Street  
 Atlanta, Ga. . . . 1232 Healey Building  
 Bend, Ore. . . . 118 Oregon Street  
 Boise, Idaho . . . 212 No. 8th St.  
 Boston, Mass. . . . 207 Old South Bldg., 294 Washington St.  
 Butte, Mont. . . . 229 Rialto Bldg., 4 South Main St.  
 Cheyenne, Wyo. . . . Union Pacific Passenger Station  
 Chicago, Ill. . . . Otis Building, 6 South La Salle St.  
 Cincinnati, Ohio . . . 705 Dixie Terminal Bldg.  
 Cleveland, Ohio . . . 1006 (tenth floor) Terminal Tower Bldg.  
 Council Bluffs, Ia. . . Union Pacific Transfer Depot  
 Dallas, Texas . . . 1029 Kirby Building  
 Denver, Colo. . . . 601 Seventeenth Street  
 Des Moines, Iowa . . . 407 Equitable Bldg., Sixth and Locust Sts.  
 Detroit, Mich. . . . 131 Lafayette Blvd., West, Room 508  
 E. Los Angeles, Calif. . . 5454 Ferguson Drive  
 Fresno, Calif. . . . 207 Rowell Building  
 Glendale, Calif. . . . 129 South Brand Boulevard  
 Hollywood, Calif. . . Christie Hotel, 6732 Hollywood Blvd.  
 Kansas City, Mo. . . . 208 East 11th St.  
 Las Vegas, Nevada . . . Union Pacific Station  
 Lewiston, Idaho . . . Room 7, Union Depot  
 Lincoln, Nebr. . . . 130 So. 13th Street  
 Long Beach, Calif. . . Wise Building, 220 Pine Avenue  
 Longview, Wash. . . .  
 Los Angeles, Calif. . . 434 W. 6th Street  
 Milwaukee, Wis. . . . 212 W. Wisconsin Ave., Room 814  
 Minneapolis, Minn. . . 620 Marquette Avenue, Room 890  
 New Orleans, La. . . . 226 Carondelet St., Room 1007

New York, N. Y. . . . 521 Fifth Ave., Room 405-6  
 Oakland, Calif. . . . 436 Fourteenth St., Room 215  
 Ogden, Utah . . . Ben Lomond Hotel Bldg.  
 Omaha, Nebr. . . . 301 South 16th Street  
 Pasadena, Calif. . . . 205 West Colorado Street  
 Philadelphia, Pa. . . . 904 Girard Trust Co. Building  
 Pittsburgh, Pa. . . . 216 Oliver Building  
 Pomona, Calif. . . . Union Pacific Passenger Station  
 Portland, Ore. . . . 701 S. W. Washington Street  
 Redlands, Calif. . . . 4 Orange Street, Fisher Building  
 Reno, Nev. . . . 200 Lyon Building  
 Riverside, Calif. . . . 7th and Vine Streets  
 Sacramento, Calif. . . 217 Forum Bldg., 1107 Ninth St.  
 St. Joseph, Mo. . . . 517 Francis St.  
 St. Louis, Mo. . . . 308 North Sixth St., Room 203  
 Salt Lake City, Utah . . Hotel Utah, Main and So. Temple Sts.  
 San Diego, Calif. . . . 345 Plaza Street  
 San Francisco, Calif. . . 355 Geary Street, Hotel Stewart  
 San Jose, Calif. . . . 206 First National Bank Building  
 San Pedro, Calif. . . . 101 West Seventh Street  
 Santa Ana, Calif. . . . 305 North Main Street  
 Santa Monica, Calif. . . 309 Santa Monica Boulevard  
 Seattle, Wash. . . . 204 Union Station, 1403 Fourth Ave.  
 Spokane, Wash. . . . Union Passenger Station  
 Tacoma, Wash. . . . 114 South Ninth Street  
 Toronto, Ontario . . . 69 Yonge St., Room 201  
 Tulsa, Okla. . . . 321 South Boston St., Room 320  
 Walla Walla, Wash. . . Main and Second Streets  
 Winston-Salem, N.C. . . 632 Reynolds Building  
 Yakima, Wash. . . . 104 West Yakima Avenue

**W. S. BASINGER**  
 Passenger Traffic Manager  
**OMAHA, NEBR.**

**C. J. COLLINS**  
 Asst. Passenger Traffic Manager  
**OMAHA, NEBR.**

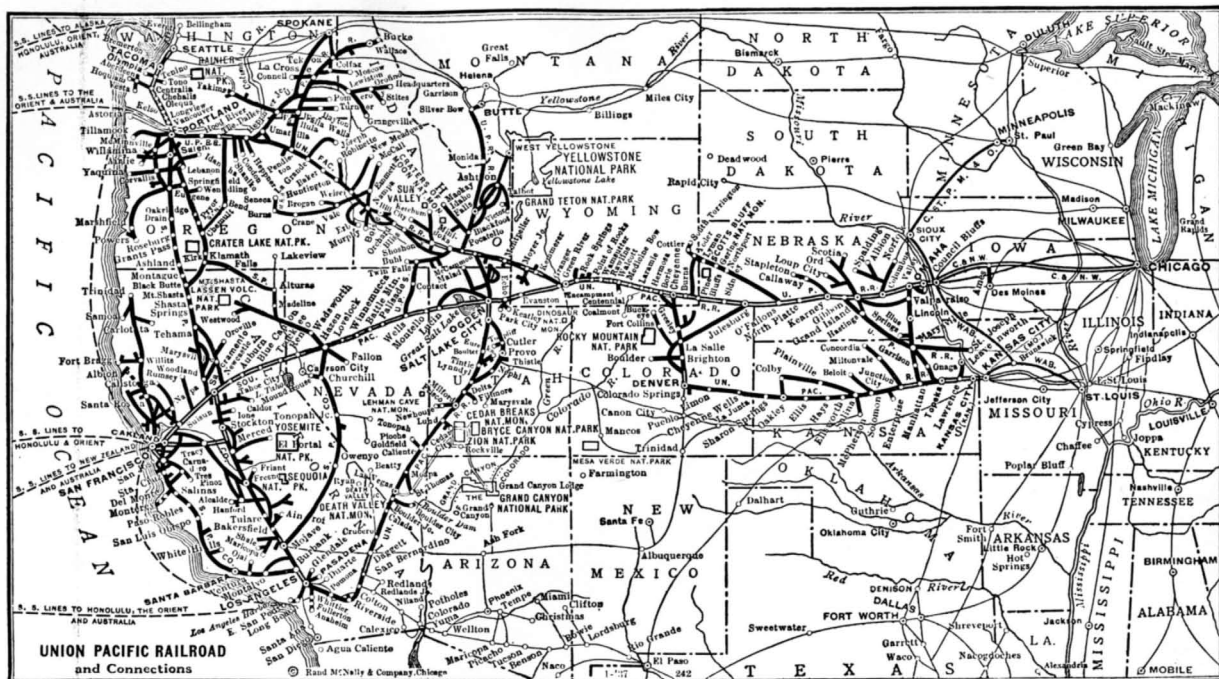
**A. J. SEITZ**  
 Assistant Traffic Manager  
**SALT LAKE CITY, UTAH**

**A. S. EDMONDS**  
 Assistant Traffic Manager  
**PORTLAND, ORE.**

**A. V. KIPP**  
 Assistant Traffic Manager  
**LOS ANGELES, CALIF.**

**W. H. OLIN**  
 Assistant Traffic Manager  
**SAN FRANCISCO, CALIF.**





## AN INDEX TO THE DUDE RANCHES

### THE JACKSON HOLE RANCHES, WYOMING

	PAGE
Aspen Ranch .....	7
Bar BC Ranch .....	7
Bear Paw Ranch .....	7
Crescent H Ranch .....	8
Double Diamond Ranch .....	9
Gros Ventre Ranch .....	9
Triangle X Ranch .....	10
White Grass Ranch .....	10

### CONTINENTAL DIVIDE AND SNOWY RANGE RANCHES, WYOMING

	PAGE
A Bar A Ranch .....	17
A Bar H Ranch .....	17
Boyer YL Ranch .....	17
One-Bar-Eleven .....	18
Sky Meadows .....	18

### MONTANA RANCHES

Cross Quarter Circle Ranch .....	19
Elkhorn Ranch .....	19
Elkhorn Springs Lodge .....	19
Haggin-Y/P-Ranch .....	20
H Bar 9 Ranch .....	20

### WIND RIVER—GREEN RIVER RANCHES, WYOMING

	PAGE
CL Bar Guest Ranch .....	11
CM Ranch .....	11
Circle S Ranch .....	11
DC Bar Ranch .....	13
Diamond G Ranch .....	13
Flying A Ranch .....	14
GP Bar Ranch .....	14
Leckie Guest Ranch .....	14
Two N Ranch .....	15
T Cross Ranch .....	15
Z Bar U Ranch .....	15

### IDAHO RANCHES

Boyle's Ranch .....	21
Cape Horn Ranch .....	21
Idaho Rocky Mountain Club .....	22
Elk Creek Ranch .....	22
Four S Ranch .....	22
Robinson Bar Ranch .....	23
Wyodah Ranch .....	23

### OREGON RANCHES

Big Minam Horse Ranch .....	25
Diamond-and-a-Half Ranch .....	25
Lazy T Ranch .....	25
Triangle M Ranch .....	26
U. S. Bar Ranch .....	26
Wallowa Lake Lodge .....	27

### COLORADO RANCHES

	PAGE
Colorado Petrified Forest Ranch .....	29
Bridlebit Guest Ranch .....	29
Drowsy Water Ranch .....	29
Hacienda Del Monte Ranch .....	30
Holzwarth Ranch .....	30
LX Bar Ranch .....	31
Rugh Ranch .....	31
Saddle Pocket Ranch .....	31
S Bar L Ranch .....	32
SLW Ranch .....	32
Smillie's F Slash Ranch .....	33
Sprague's Ranch .....	33
Stead Guest Ranch .....	33
Timber Top Ranch .....	34
Wind River Ranch .....	35
Woodlawn Ranch .....	35

### NEVADA RANCHES

Eagle Valley Ranch .....	36
Nevada Stock Farm-Dude Ranch .....	36
Pyramid Lake Ranch .....	36
TH Ranch .....	37

### CALIFORNIA RANCHES

Furnace Creek Ranch .....	38
Glenn Ranch .....	38
McCarthy's Guest Ranch .....	38
North Verde Ranch .....	39
Pierson Dude Ranch .....	39

## CAMPS - GUIDES - LODGES - RESORTS

(See Introduction Page 41)

### JACKSON HOLE REGION

	PAGE
Diamond Double L Outfit .....	41
Jackson Lake Lodge .....	41
Leek's Camp .....	42
Moose Head Ranch .....	42
STS Ranch .....	42
Teton Lodge .....	43
Triangle F Ranch .....	43
Turpin Meadow Lodge .....	43
V Bar V Ranch .....	44

### SNOWY RANGE REGION

Brooklyn Lodge .....	44
Libby Lodge .....	44
Medicine Bow Lodge .....	45
Skyline Ranch for Boys .....	45

### COLORADO REGION

	PAGE
Allsebrook Camp for Girls .....	46
Bar IL Ranch .....	46
Byers Peak Ranch for Boys, Inc. .....	46
Camp Chief Ouray .....	47
Camp Lewis E. Lemen .....	47
Cheley Colorado Camps .....	48
Camp Shoshoni .....	48
Double M Ranch .....	48
Double V Ranch .....	49
Lodge of Pines .....	49
Quarter Circle H Ranch .....	49
Ralston Creek Ranch .....	50
Shu-Tan-Ka Camp for Boys .....	50
The Ka Rose Resort .....	51

### IDAHO REGION

	PAGE
Alturas Lake Ranch .....	52
Big Springs Inn .....	52
Mack's Inn .....	52
Wyoming Riding Camp .....	52

### BIG GAME HUNTERS DIRECTORY

Complete List .....	53
---------------------	----







"46"

4S



J-Y

A-H

JB

N

ZE



Z-U

STS

I

BC



V-V



M

H

LX

X

CL

L



U

Y/P

US

R+



T+



UE

H

4

P



±

H



B

H-B



F

AD

H9



T

