



PALMS, ORANGE GROVES AND SNOWY MOUNTAINS—Southern California







## *Dinner*

---

Fruit Cup, Grenadine

or

Vegetable, Julienne

Individual Mountain Trout, Saute Meuniere

Fried Young Chicken, Country Style

Roast Spring Lamb, Mint Sauce

Assorted Cold Meats, Specialty Garnish

Persillade Potatoes

Green Corn, Saute

The Salad Bowl

Pineapple Tidbit Sundae

Chilled Cantaloupe

Chilled Watermelon

Roquefort Cheese, Toasted Crackers

Coffee

Tea

Milk

Iced Tea or Coffee

Almas Temple, A. A. O. N. M.

## BEVERAGES

ASSORTED MINERAL WATERS	Pints .30	Splits .20
GINGER ALE, Imported		Pint .35
GINGER ALE	Pints .25	Splits .10
GRAPE JUICE OR LOGANBERRY JUICE	Small Bottle	.20
(WITH SPLIT OF SPARKLING WATER)		.30
LEMONADE, Plain		.20
(WITH SPLIT OF SPARKLING WATER)		.30
ORANGE JUICE	Glass	.20
SARSAPARILLA, Domestic		.25
SARSAPARILLA, Imported		.35
COCA COLA		.15
LAXATIVE WATERS	Splits	.20
BROMO SELTZER	Small Bottle	.15
ALKA SELTZER	Drink .15	Package .30
BEER	Bottle	.25
IMPORTED BASS' ALE	Bottle	.50

## WINES AND LIQUORS

### CHAMPAGNES AND WINES

CHAMPAGNES	Splits	Half Bottle
IMPORTED	\$ 2.25	\$ 4.00
DOMESTIC		2.50
<b>RED WINES (California)</b>		
TABLE CLARETS	.50	.75
SPARKLING BURGUNDY		1.50
<b>WHITE WINES (California)</b>		
RIESLING		.60
SAUTERNE	.50	.75
		Per Drink
PORT (California)		.25
SHERRY (California)		.25
		Individual
PORT (Imported)		.35
SHERRY (Imported)		.35

## LIQUORS

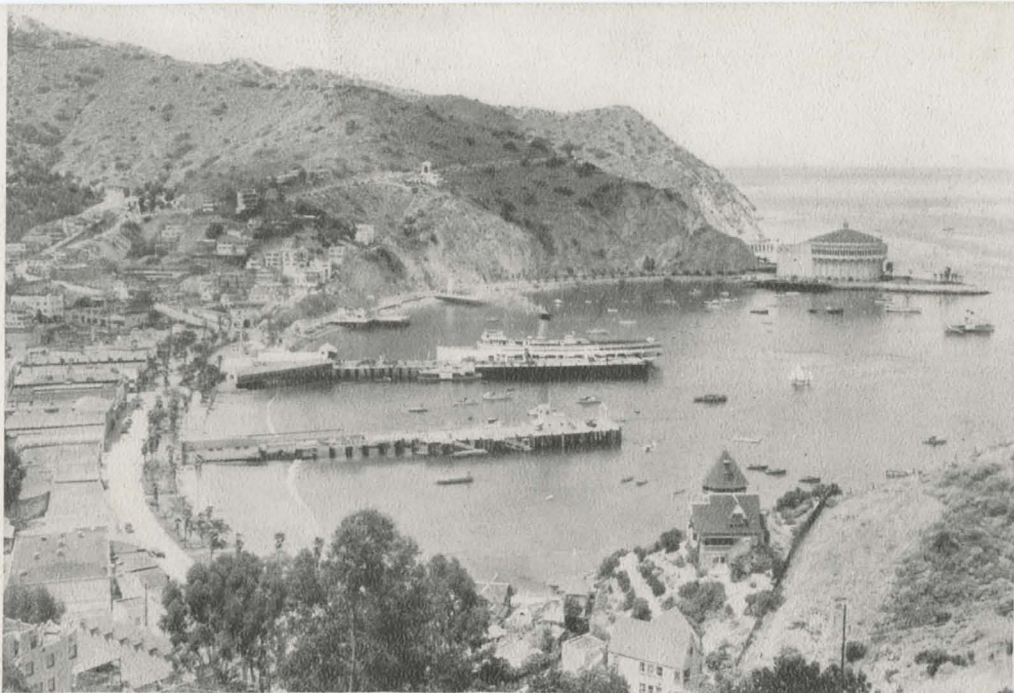
<b>WHISKIES, COCKTAILS, ETC.</b> (No charge for Syphon Seltzer when furnished in connection with liquor, etc., purchased on this car.)		
BOURBON OR RYE	Indiv. Bottle	.25
BOURBON OR RYE, Aged	" "	.40
SCOTCH WHISKEY	" "	.45
GIN, DOMESTIC	" "	.25
COCKTAILS, MANHATTAN	" "	.30
DRY MARTINI	" "	.30
SIDE CAR	" "	.30
OLD FASHIONED	" "	.30
<b>IMPORTED LIQUEURS</b>		
CREME DE MENTHE	" "	.45
BENEDICTINE	" "	.45
COGNAC	" "	.45
APRICOT BRANDY	" "	.45
SPLIT OF GINGER ALE OR SPARKLING WATER (For Highballs)		.10
<b>SYPHON SELTZER</b> (When not accompanied by liquor service)		
Individual Service		.10
Full Bottle		.25

Prices shown subject to sales tax in States where applicable.

Steward will advise patrons of brands of wines and liquors that are available for service.

E. C. WEBSTER, Manager, Dining Car & Hotel Dept., Omaha, Neb.





AVALON BAY, SANTA CATALINA ISLAND, CALIFORNIA

### *Southern California*

**S**OUTHERN CALIFORNIA is an all-year, outdoor land of charm, mystery, romance and splendor—strong in contrast, endless in variety. With a climate approaching perfection, its orange groves stand beneath snow-clad mountains and its profusion of flowers bloom the year round beside hundreds of miles of palm-bordered highways. Climatically and topographically, California leaves no reasonable expectation unfulfilled.

California's unfailing charm is a blending of many factors: the silver, surf-beaten strands of the Pacific and the gay beach resorts; great cosmopolitan cities of commerce and the make-believe cities of the "movies;" snowy peaks overlooking semi-tropical valleys green with palms and orange groves; remote far-flung open spaces that include the lowest and the highest spots in the United States; historic missions founded in an age of Spanish influence; courts and courses for every wholesome sport. From city to seashore, to canyon, mountain or island resorts requires but a few hours.

No matter what is sought—a new business field, a new home, pleasure, rest, recreation, California makes a generous response. It has always known the art of hospitality and has provided the visitor with hotels, resorts and amusements according to his needs. Golf, fishing, hunting, all forms of aquatic and field sports, mountain climbing, camping and motoring flourish in an ideal environment under genial skies at any season of the year. The joy of the outdoors is with you always in Southern California.

Union Pacific trains to and from California provide the maximum in travel comfort and enjoyment. Fast transcontinental schedules are maintained. The trains run via a scenic, historic and direct route over a boulevard of steel unsurpassed on any other railway system on earth.



# UNION PACIFIC