

THE HERMITAGE—Ogden Canyon, Utah



Union Pacific Club Breakfast Suggestions

(Please order by number with items desired)

FRUIT AND CEREAL SELECTIONS

Chilled Cantaloupe	Puffed Rice or Puffed Wheat
Chilled Orange Juice	Shredded Wheat Biscuit
Kadota Figs	Toasted Corn Flakes
Tomato Juice	All Bran Krumbles
Stewed Prunes	Grape-Nuts
Sliced Orange	Cream of Wheat
Preserves and Marmalade	Rolled Oats
Berries with Cream	Rice Flakes
Sliced Bananas	Krusty Bran

No. 1—\$1.00	Choice of Listed Fruits and Cereals with Cream			
	Broiled Lamb Chops on Toast, or			
	Calf's Liver with Bacon, or			
	Broiled Breakfast Steak, Mushrooms			
	Hot Rolls	Muffins	Toast	
	Coffee	Tea	Milk	Cocoa

No. 2—85c	Choice of Listed Fruits and Cereals with Cream			
	Ham or Bacon with two Eggs, or			
	Salt Mackerel, Steamed Potato, or			
	Omelet, any style			
	Hot Rolls	Muffins	Toast	
	Coffee	Tea	Milk	Cocoa

No. 3—75c	Choice of Listed Fruits and Cereals with Cream			
	Griddle Cakes with Two Strips of Bacon, or			
	French Toast with Honey or Currant Jelly, or			
	Two Eggs, as desired			
	Hot Rolls	Muffins	Toast	
	Coffee	Tea	Milk	Cocoa

No. 4—65c	Choice of Listed Fruits and Cereals with Cream			
	Hot Rolls	Muffins	Toast	
	Coffee	Tea	Milk	Cocoa

No. 5—50c	Choice of Listed Fruits or Cereals with Cream			
	Hot Rolls	Muffins	Toast	
	Coffee	Tea	Milk	Cocoa

Non-Caffeine Coffees available and will be substituted for coffee if desired.

Prices shown subject to sales tax in States where applicable.

6-16-36

Breakfast

A LA CARTE

Orange (1) 15 Sliced Orange 25 Orange Juice 20
Orange Marmalade 25 Preserves 30 Hawaiian Pineapple 30
Cantaloupe, Half 25 Stewed Prunes with Cream 30 Berries, Cream 35
Strained Honey (Individual Jar) 25 Kadota Figs with Cream 30

Cooked or Dry Cereals with Cream 30

Available Fresh Fish on Request

Broiled or Boiled Salt Mackerel 75
Bacon and Eggs 70 Ham and Eggs 70
Bacon 70; Half Portion 40 Ham 70; Half Portion 40
Lamb Chops (1) 40; (2) 75
Single Sirloin Steak 1.40 Plain Steak 90
Eggs: Boiled, Fried, Scrambled or Shirred (2) 30
Poached Eggs on Toast (2) 45
Plain Omelet 35; Ham, Cheese or Jelly Omelet 50 Spanish Omelet 60

Potatoes: Hashed Browned or Saute 20; Stewed in Cream 20

Breakfast Muffins 15 Breakfast Rolls 15 Cold Bread 10
Dry Toast 15 Buttered Toast 15 Milk Toast 35 Cream Toast 45
Griddle Cakes with Syrup 30

Coffee: Pot 25; Cup 15

Non-Caffeine Coffee 25 Instant Postum 25

Japan, Ceylon, English Breakfast, Formosa Oolong
or Blend Tea, Drawn to Order 25

Cocoa with Whipped Cream 25

Milk, (Individual Bottle) 15 Malted Milk 20

Meal Service by Waiter Outside of Dining Car 25c for Each Person Served

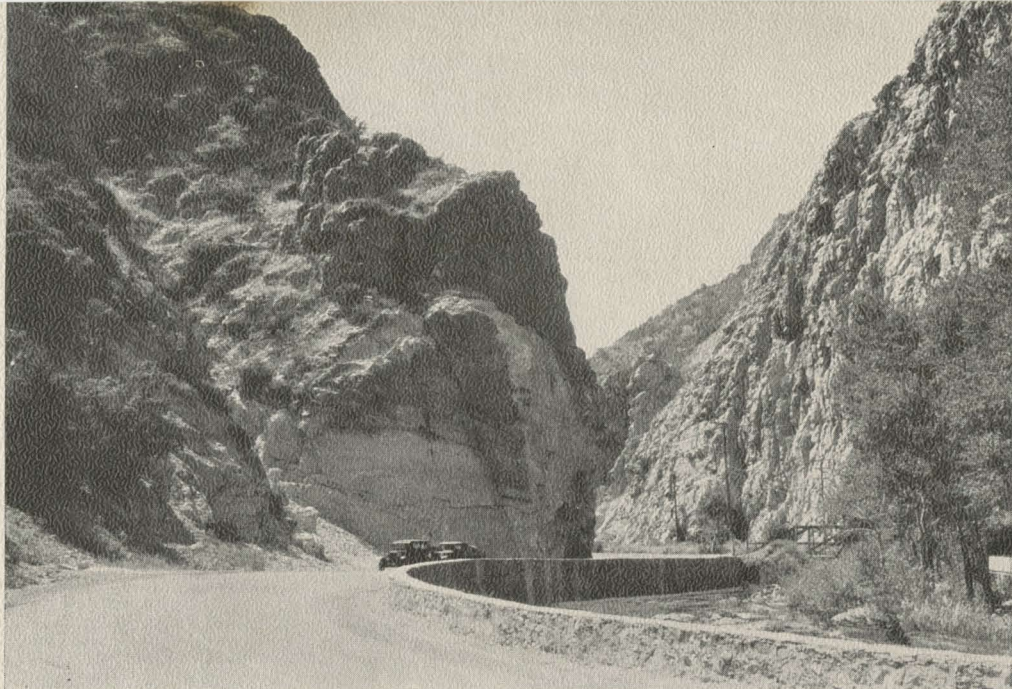
Parents may share their portions with children without extra charge; or half-
portions served at half price to children under twelve years of age.

If additional helpings are desired, your waiter will be glad to serve without charge.

Guests will please call for check and compare amounts charged before paying.

Our stewards are keenly interested in maintaining the finest service and will
greatly appreciate your expressions as to features you enjoyed as well as
suggestions for improvement.

E. C. WEBSTER, Manager, Dining Car and Hotel Dept.,
Union Pacific Railroad Co., Omaha, Neb.



HIGHWAY IN OGDEN CANYON, UTAH

Ogden, Utah

OGDEN, UTAH, on the Union Pacific System, at the juncture of the Ogden and Weber rivers, near the western base of the lofty Wasatch Range, was founded in 1848, and laid out in 1850 under the direction of Brigham Young, the Mormon leader. Great Salt Lake lies ten miles westward. The second largest city in Utah, Ogden has excellent utilities, modern hotels and public buildings. The State Industrial School and State institutions for the deaf and blind are located there. Ogden is also an important live stock, meat packing and manufacturing center.

Ogden Canyon, about two miles east of the city, and reached by a hard-surfaced automobile highway, is one of the most picturesque gorges in the West. In its upper reaches the canyon is extremely narrow and precipitous, and the surrounding peaks rise to lofty heights. At the bottom is a sparkling trout stream, the Ogden River, whose ceaseless action through long geologic periods cut the stupendous passageway through the Wasatch Mountains. Trolley cars ascend seven miles to an attractive rustic hotel, the Hermitage, where are some of the most impressive vistas of cliffs and crags.

Ogden is on the double-track main line of the Union Pacific System, reached from Chicago, Omaha, St. Louis, Kansas City, Denver and the East by fast Pullman trains operating on convenient schedules, and from the Pacific Northwest and California by similar Union Pacific service. Ogden is a gateway to Yellowstone and Grand Teton National Parks and to Zion-Bryce Canyon-Grand Canyon National Parks.



UNION PACIFIC