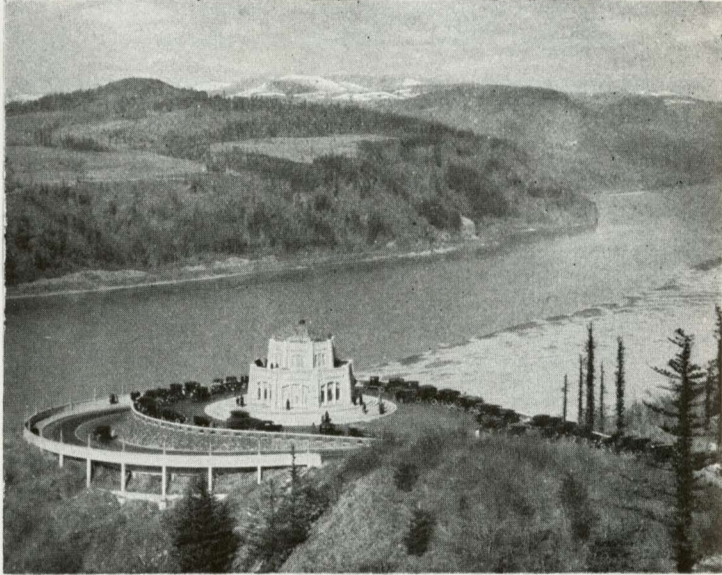


THE Columbia River Route to

# ALASKA

Go UNION PACIFIC



Widely traveled people have found that in all the rest of the world there is nothing of scenic grandeur that cannot be equaled or surpassed in America. Result: each year more and more Americans are acting on the suggestion that they "see America first." They have been reveling in the Rocky Mountain region, California, the Pacific Northwest, the National Parks. Now they are going on to Alaska, the land of the midnight sun, of lofty and massive mountains, of huge glaciers, but a land with a mild and delightful summer climate. The sea voyage through the famous Inside Passage to and from Alaska is a marvelous adventure in itself.

With travel costs attractively low, Pullman surcharges eliminated, hotel rates and sight-seeing costs reduced, and with fully air-conditioned, dust free trains (diners,

- EN ROUTE VISIT**
- Zion — Bryce
  - Grand Canyon
  - Yellowstone
  - Grand Teton
  - Rocky Mountain
  - Yosemite — Rainier
  - National Parks
  - Colorado — Utah
  - California
  - Boulder Dam
  - Western Dude Ranches
  - Pacific Northwest



club cars, coaches, sleeping cars), all who plan some day to see America's West—and Alaska, should decide to do it this year. And when you do visit Alaska, our scenic "last frontier," make the most of your trip across the States. Go Union Pacific over the historic Overland Route, the old Oregon Trail—

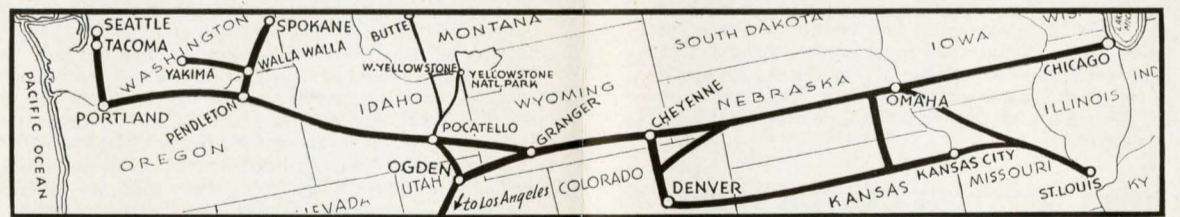
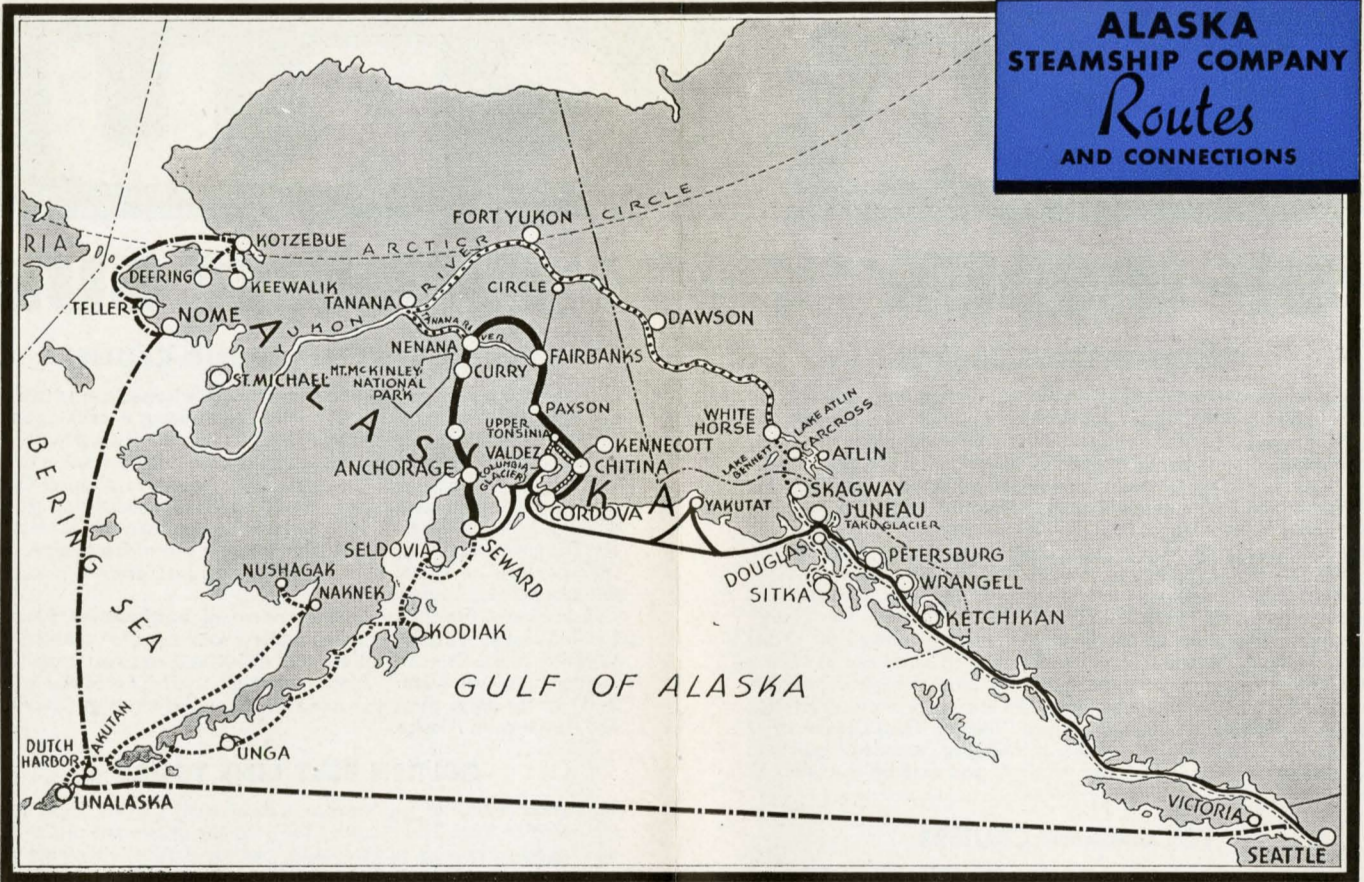
the direct and interesting way.

En route to or from Seattle via Union Pacific, most of the West can be visited on easy and inexpensive side trips; because Union Pacific serves 15 National Parks and more of the West than any other railroad.

## Let UNION PACIFIC passenger agents serve you

Any Union Pacific agent will be glad to make your reservations on the Portland Rose and The Alaska Line. He is familiar with all details and will be glad to plan your itinerary and look after the many incidentals that insure a pleasant journey. Or address **W. S. Basinger, Passenger Traffic Manager, Omaha, Nebraska.**

- |  |   |  |
|--|---|--|
| <b>BOSTON</b><br>294 Washington St.      | <b>DENVER</b><br>601 Seventeenth St.      | <b>OMAHA</b><br>301 South 16th St.               |
| <b>CHICAGO</b><br>6 South La Salle St.   | <b>DETROIT</b><br>131 Lafayette Blvd., W. | <b>PHILADELPHIA</b><br>Broad St. & So. Penn. Sq. |
| <b>CINCINNATI</b><br>4th and Walnut Sts. | <b>KANSAS CITY</b><br>805 Walnut St.      | <b>PITTSBURGH</b><br>Smithfield St. & 6th Av.    |
| <b>CLEVELAND</b><br>50 Public Square     | <b>NEW YORK</b><br>521 Fifth Ave.         | <b>ST. LOUIS</b><br>308 North Sixth St.          |



**LEGEND**

- ALASKA STEAMSHIP COMPANY — PRINCE WILLIAM SOUND CRUISE
- ALASKA STEAMSHIP COMPANY — INSIDE PASSAGE CRUISE
- GOLDEN BELT LINE TOUR
- COPPER RIVER-KEYSTONE CANYON TOUR
- YUKON RIVER CIRCLE TOUR
- ALASKA STEAMSHIP COMPANY — BERING SEA ROUTE
- ALASKA PENINSULA ROUTE — CONNECTING STEAMSHIP LINE

# ALASKA

### LOW SUMMER FARES TO SEATTLE

Low round-trip summer excursion fares to Seattle will be in effect on the Union Pacific System starting May 15, 1936.

FROM	TO SEATTLE			
	45-Day Limit	Season Limit	Inter-mediate	Coach
ATLANTA, GA.		112.80	95.20	73.15
BALTIMORE, MD.	120.75	130.45		
BOSTON, MASS.	132.80	144.25		
BUFFALO, N. Y., Standard	109.55	116.10		
CHICAGO, ILL.		86.00	68.80	57.35
CINCINNATI, OHIO	97.00	101.35		
CLEVELAND, OHIO, Standard	101.35	105.65		
DETROIT, MICH.	98.30	101.70		
KANSAS CITY, MO.		72.00	57.60	48.00
MEMPHIS, TENN.		92.65	74.15	61.80
NEW YORK, N. Y., Standard	126.90	138.35		
NORFOLK, VA.	121.00	130.90	114.60	86.33
OMAHA, NEB.		72.00	57.60	48.00
PHILADELPHIA, PA.	122.85	133.10		
PITTSBURGH, PA.	107.10	113.05		
ST. LOUIS, MO.		81.50	65.20	54.35
ST. PAUL-MINNEAPOLIS		74.83	59.90	49.90
WASHINGTON, D. C.	120.75	130.45		

Proportionately low summer fares will be in effect from other principal eastern cities. Stopover at any of the numerous points of interest en route may be arranged easily.

For additional information or reservations visit any Union Pacific representative.

# ALASKA

FOR AN AIR-COOLED VACATION

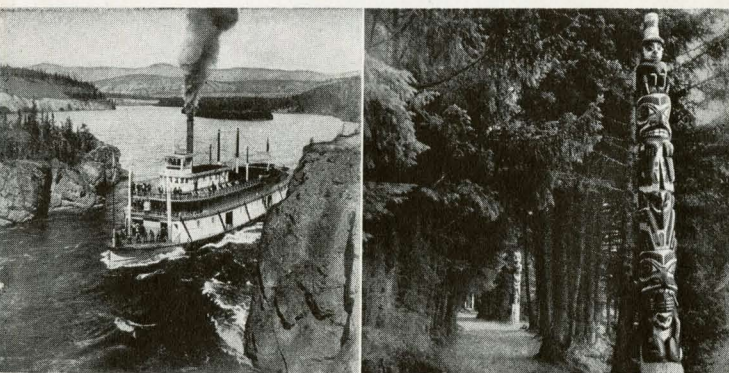
THE ALASKA LINE

UNION PACIFIC OVERLAND



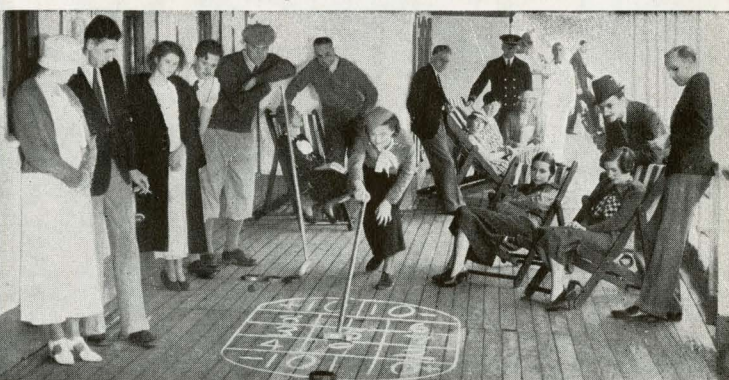


Only The Alaska Line visits mighty Columbia Glacier



Along the Yukon

Totem-lined Lovers' Lane, at Sitka



Congenial shipmates gather on The Alaska Line



Mt. Edgecumbe, replica of Fujiyama, rises near Sitka

## A Smooth Vacation



You'll like Alaska—*All* Alaska! You'll revel in the glamorous scenery—you'll enjoy the all-too-short days and sunlit nights cruising along mountain-protected lanes of glassy water. You'll spend happy hours with your fellow travelers in exhilarating deck games and "exploring" the many picturesque Alaska towns. Probably no

other corner of the earth is so richly endowed with such contrasting, natural phenomena . . . nor any other vacation so crammed full of thrills.

Just forty-eight hours from Seattle, Alaska certainly is not a far-away land of inhospitable polar blasts. Alaska's summer vacation climate is ideal. Her summer days are a pleasant escape from summer's intense heat, and her nights are delightfully cool.

But you must see Alaska to know her magic—magic of snow-topped mountains . . . flowered lands . . . green valleys . . . mighty blue glaciers . . . native atmosphere and weird totems . . . fascinating historic ports of call where interesting hours are spent wandering along streets once filled with gold-frenzied people, others once graced by Russian ladies clad in precious Alaska furs. These give to Alaska an allure not to be surpassed by any other lovely section of the globe. And when you return from this adventurous vacation, the memories of all you have seen will thrill you again and again—for the spell of the Midnight Sun will always belong to you!

### SIDE TRIPS AND STOPOVERS

There are a number of interesting and inexpensive Alaska side trips available to The Alaska Line's passengers. Many of these may be made while the steamer is in port. Others, such as short trips into the interior, may be made to connect with following steamers of The Alaska Line. Stopovers may be made at any port at no extra fare. Everything has been planned to make your Alaska vacation a happy and unforgettable experience.

## "UP-UNDER" THE MIDNIGHT SUN

### INSIDE PASSAGE CRUISES

Whatever your selection of these Alaska cruises, your route from Seattle and beautiful Puget Sound takes you northward along the Inside Passage, that practically unruffled ocean lane between islands and mountains, with scenery all the way. On this 2500-mile "Inside Passage Cruise" you will sail as far north as Skagway, still reminiscent with the evidences of her rip-roaring boom days during the gold rush to the Klondike. Every "Inside Passage Cruise" steamer of The Alaska Line visits Sitka, that dreamy capital of Russian America, where totem-lined "Lovers' Lane" and her magnetic natural setting compete for your interest with her historic Greek Orthodox Church of St. Michael, her block-house, grim reminder of native warfare, her thrilling past under rule of Baranof, "Little Czar of the Pacific." This cruise will bring you to Alaska's port towns, nestled at the base of towering mountains . . . to picturesque villages replete with their grotesque totems . . . to the very face of jagged "living" Taku Glacier, that answers your ship's whistle with a thundering cascade of blue ice. This cruise is scheduled for eleven days, and may be made for as little as \$90.

### TOTEMLAND CRUISES

This itinerary covers identically the same territory as does the "Inside Passage Cruise." Totemland Cruises make it possible to enjoy an Alaska vacation in extremely limited time—within the confines of a two-weeks period from most points in the States. Aboard a larger, faster express steamer of The Alaska Line, the schedule calls for nine, instead of eleven days. Even with this express service, a number of accommodations are offered at \$90, others at \$95 and \$105.

### COPPER RIVER—KEYSTONE CANYON TOURS

Leaving the Prince William Sound Cruise steamer, a short trip by rail from Cordova takes you over the Copper River & Northwestern Railway (the "Iron Trail" of history and fiction) along the Copper River, returning by automobile through deep-walled Keystone Canyon to Valdez, where you again board the same steamer. This trip is also made in the reverse direction, entering at Valdez and boarding your steamer at Cordova. Fares for this 12-day trip are as low as \$165.50, with some shore expenses included.

### SPECIAL ARCTIC CRUISE

Practically a month's vagabonding in Eskimoland—limited membership—consult your rail line agent for details.

**All fares quoted are first-class, round-trip from Seattle, and include berth and meals aboard ship. Sailings two and three times weekly during Alaska's extensive vacation season**

### PRINCE WILLIAM SOUND CRUISES

Cruising and visiting along the smooth Inside Passage, this twelve-day trip from Seattle takes you north to Juneau, Alaska's capital and home of the world's largest gold mill. Westward with the snow-clad Fairweather and St. Elias mountain ranges majestically guarding the nearby coastline, you call at Cordova, Copper Gateway to Alaska; quaint Valdez, literally built on a dead glacier; and Seward, that bustling all-year gateway to the Interior. Scenically, the Prince William Sound district beggars mere description, and the spectacle of Columbia, Alaska's mightiest glacier in action, will never leave your memory.

Combining the picturesque grandeur of Southeastern Alaska's Inside Passage, with the rugged natural splendor of Alaska's great Westward, the Prince William Sound Cruise is unquestionably the outstanding "all-water" Alaska vacation choice. Fares are as low as \$125 for these three thousand five hundred miles of adventure and romance in Alaska.

### GOLDEN BELT LINE TOURS

This popular tour of the Interior is most aptly named, for it takes the traveler from The Alaska Line steamer at Seward or Cordova and leads northward to Fairbanks, center of Alaska's placer gold mining country. The scenic rail and highway routes embraced in the Golden Belt Line Tour present thrilling sights along the Copper River, with its "hanging" glaciers . . . intimate beauty and native life along the historic Richardson Trail to the gold fields . . . the feeling of freedom while exploring the vast reaches of the national park guarded by eternally snow-clad Mt. McKinley, highest peak on the North American continent. It is on this cruise-tour that you may visit the Government's famous Matanuska Valley colonization project. You sacrifice no bit of coastline beauty on this trip into the Interior, for you visit every port, see every sight on the Prince William Sound Cruise, too. For this 19-day cruise-tour, fares are as low as \$222.70, exclusive of hotels and meals ashore.

### YUKON RIVER CIRCLE TOURS

This 35-day cruise-tour from Seattle takes you up the Yukon River, above the Arctic Circle, and through the storied Klondike region. Included are the Prince William Sound Cruise to Seward, rail to McKinley Park, Fairbanks and Nenana, river steamer through Dawson to Whitehorse, and by rail down the famous "Trail of '98," to join The Alaska Line steamer at Skagway for the Seattle-bound trip through the Inside Passage. In the reverse direction (downstream on the swift-moving Yukon) the trip takes 23 days, round trip from Seattle. Fares for the Yukon River Circle Tour are as low as \$316.70, exclusive of hotels and meals ashore.

## To a Land of Magic Moods

Modern American rail and steamship services combine to make your Alaska vacation a reality—pleasantly and economically. Travel on the Portland Rose, famous completely air-conditioned train of the Union Pacific Railroad, to Seattle, in the heart of the evergreen Pacific Northwest. Northward from Seattle your course finds you aboard friendly ships of The Alaska Line, threading your way along the calm and fjord-like Inside Passage—resting and playing in the invigorating salt air, visiting ashore at Alaska ports *en route!*

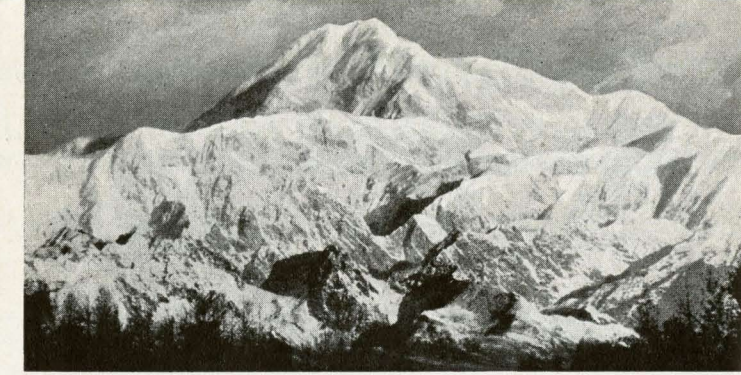
You can't afford to miss seeing Alaska this year—rail fares were never more attractive, and aboard ship the fastidiously prepared meals and your comfortable berth are included in the surprisingly low rate. There is no aggravating dollar-depreciation, no inconvenience of passports and visas.

American travel routes—by rail and steamer via Seattle, afford wide choice of routes, and more stops at interesting ports. On The Alaska Line—"surprise ports" not shown on regular itineraries, are visited, and while your ship is receiving or discharging cargo, you have an opportunity to "explore" and enjoy the characteristic charm of the truly "out-of-the-way" settlements.

Ask any Union Pacific Railroad representative for more descriptive Alaska Steamship Company cruise literature—plan for a smooth, "air-cooled" vacation this year.

### ALASKA'S VACATION SEASON

Contrary to general misinformation, Alaska's vacation season is not limited to one or two short months, but is at its height for five full months from May to September. If you come early, May, June, and early July bring you the most pronounced sunlit nights . . . while later July and August bring you the glorious Alaska moonlit nights. Somewhat lower fares are offered prior to June 1.



Majestic Mt. McKinley, reached by The Alaska Railroad



Son of the Midnight Sun

Finest foods—fastidiously prepared



Sightseeing at night—where the sun works overtime



The Alaska Line's ocean trail through mountains