

# WESTERN WONDERLANDS



## UNION PACIFIC





# WESTERN WONDERLANDS



ONCE a year, or oftener, some member of every family raises the question, "Where are we going for our vacation this summer?" From then until vacation begins there is usually a period of discussion and laying of plans.

"Western Wonderlands" was written to be used on just such an occasion. It does not pretend to be exhaustive; it gives series of brief summaries of some of the most interesting vacation lands of the West. Its information is sufficiently complete that anyone can make preliminary selection from it. Then it is an easy matter to send in the coupon on page 22, which will bring larger, more detailed books on the regions only briefly described here.

Incidentally, he is a wise traveler these days who knows the value of a journey by rail. Train travel is vacation insurance. Not only does one get the benefit of expert advice before starting, but traveling by train adds several days to the length of a vacation and relieves one of many cares and responsibilities—in the final analysis the vacation costs about the same as, or less than, one taken in any other way.

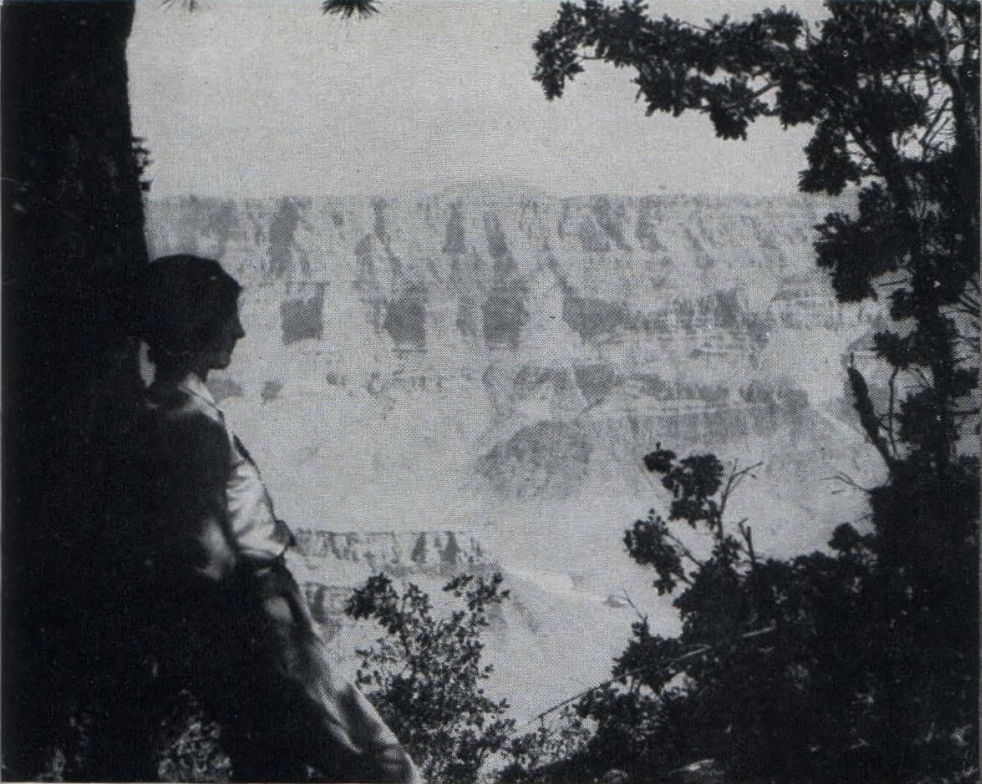






THE GREAT WHITE THRONE, MOST MAJESTIC OF THE COLOSSAL ROCK TEMPLES  
IN ZION NATIONAL PARK





GRAND CANYON FROM CAPE ROYAL ON NORTH RIM

## Colorful Canyons of Scenic Splendor

*Cedar City, Utah, One of America's  
Newest Vacation Capitals*

**S**OUTHWESTWARD by an overnight Pullman ride from Salt Lake City, and a short motor bus ride from Lund, lies the Mormon town of Cedar City, Utah, just off the Los Angeles line of the Union Pacific System. Once just another of Utah's thriving villages, lacking even railroad service, today Cedar City recalls pleasant memories to thousands of people in both hemispheres. It was the starting-place for them of five days or more among Nature's masterpieces: Zion, Grand Canyon and Bryce Canyon National Parks, Cedar Breaks National Monument, Kaibab National Forest, fittingly called "America's Greatest Combination Scenic Tour."

### *Three of Our Newest National Parks*

These five regions are truly frontier vacation-lands. In 1919 Zion and Grand Canyon were made National Parks. In 1925 the Union Pacific completed its fine lodges at Zion and Bryce. In 1928 its building program was climaxed by the completion





DE LUXE LODGES AT BRIGHT ANGEL POINT, NORTH RIM, GRAND CANYON

of modernly equipped lodge facilities on the North Rim of Grand Canyon; the same year, Bryce Canyon became a National Park. Cedar Breaks was made a National Monument late in 1933. One word, *colorful*, is the common adjective describing these regions; there is color in a bewildering variety of shades, tints and combinations, overlaid on colossal buttes, rock temples and chasms of breath-taking grandeur.

### *Zion National Park*

A six-day tour includes all five regions. There is a morning ride to Zion; the afternoon, night and next morning are spent in the Park itself. Zion Canyon, the principal spectacle of Zion National Park, is a narrow and extremely deep gorge, flanked on either side by majestic rock temples, towering walls and stupendous buttes. From Zion Lodge, within the canyon, motor-bus trips may be made to The Narrows; excursions on horseback to the rims give the visitor tremendous panoramas of the red and white towers and temples of Zion.

### *Across the Mesas to Grand Canyon*

An afternoon is occupied in the 130-mile trip from Zion, via the new Zion-Mt. Carmel Highway, across the Prismatic Plains, through the verdant Kaibab Forest to Grand Canyon. The new highway, first opened for travel in 1930, is a remarkable feat of highway engineering. A short distance from Zion





BRYCE CANYON FROM COMANCHE TRAIL, BRYCE CANYON NATIONAL PARK

the road enters a tunnel more than a mile long. Six great windows are cut from the tunnel highway, disclosing scenes of tremendous majesty. Next to the first glimpse of Grand Canyon, the chief event of the day is the ride through the Kaibab. Without question the most beautiful virgin forest in America, its grassy, open "parks" and avenues of fir, spruce and pine are alive with thousands of blacktail deer.

### *Grand Canyon, One of the Greatest Scenic Wonders of the World*

Grand Canyon defies the efforts of writers and artists to adequately record its beauties. The twelve-mile width of its chasm, the vast, sunken mountains that lie in its mile of depth, are so stupendous as to be almost beyond understanding. Add to this the sea of flaming, changing colors that overlies its rock temples and penetrates its depths, and you have some inkling of the elements that make it one of the world's greatest scenic spectacles. Guest lodges on Bright Angel Point are built of native stone and logs and nestle in the quiet beauty of the Kaibab pines and firs near the brink of the North Rim.

After two nights and a day at Grand Canyon, visitors proceed northward to Bryce Canyon. Along in the afternoon, the highway swings into Red Canyon, whose rich, colorful turrets and towers are a fitting prelude to the greater glories of Bryce.





THE CEDAR BREAKS, PRODUCT OF EROSION, SOUTHERN UTAH

### *Bryce Abounds in Colorful Fantasies in Filigreed Stone*

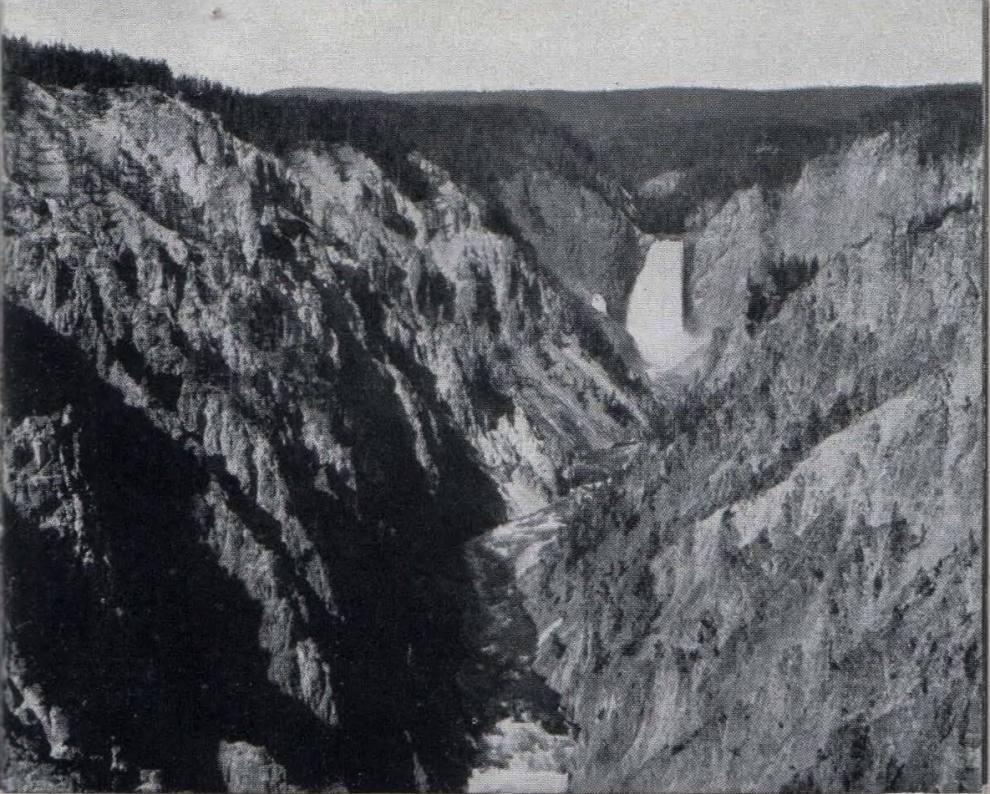
Bryce Canyon National Park presents another phase of these strange, colorful vacationlands. Rather than a canyon, it is a vast amphitheatre, a thousand feet deep from the rim near which stands Bryce Canyon Lodge. From its depths, filled with architectural forms, rise myriads of bizarre figures, weird, almost unearthly in their brilliant colorings. The canyon can be viewed from several vantage points on the rim; a number of easy trails, for horseback or hiking trips, lead into the canyon itself.

The last part of the tour, from Bryce to Cedar City, is a half-day's ride, with a leisurely stop to view the colorful amphitheatres of the Cedar Breaks, and then a descent into rugged Cedar Canyon.

### *A Splendid Tour, Splendidly Planned in Every Detail*

In the arrangement of this tour, the Union Pacific has provided the finest accommodations. Its motor-buses are of the most modern type. The lodges are fine examples of rustic beauty, built to hotel standards of comfort but without the conventional hotel atmosphere that would be so out of place here. The highways compare with the best in the Union. Ask for a copy of the Zion "Red Book" describing this region in detail. It contains many natural color photograph reproductions.





GREAT FALL AND GRAND CANYON OF THE YELLOWSTONE

# Yellowstone, Weird and Magnificent

## *West Yellowstone, the Most Popular Entrance*

**O**LDEST, largest and probably the most famous of our National Parks, Yellowstone is associated with the colorful early history of the Union Pacific. E. H. Harriman himself took a keen interest in the building of the line which has become the most popular way to Yellowstone, terminating at West Yellowstone station, directly on the park boundary.

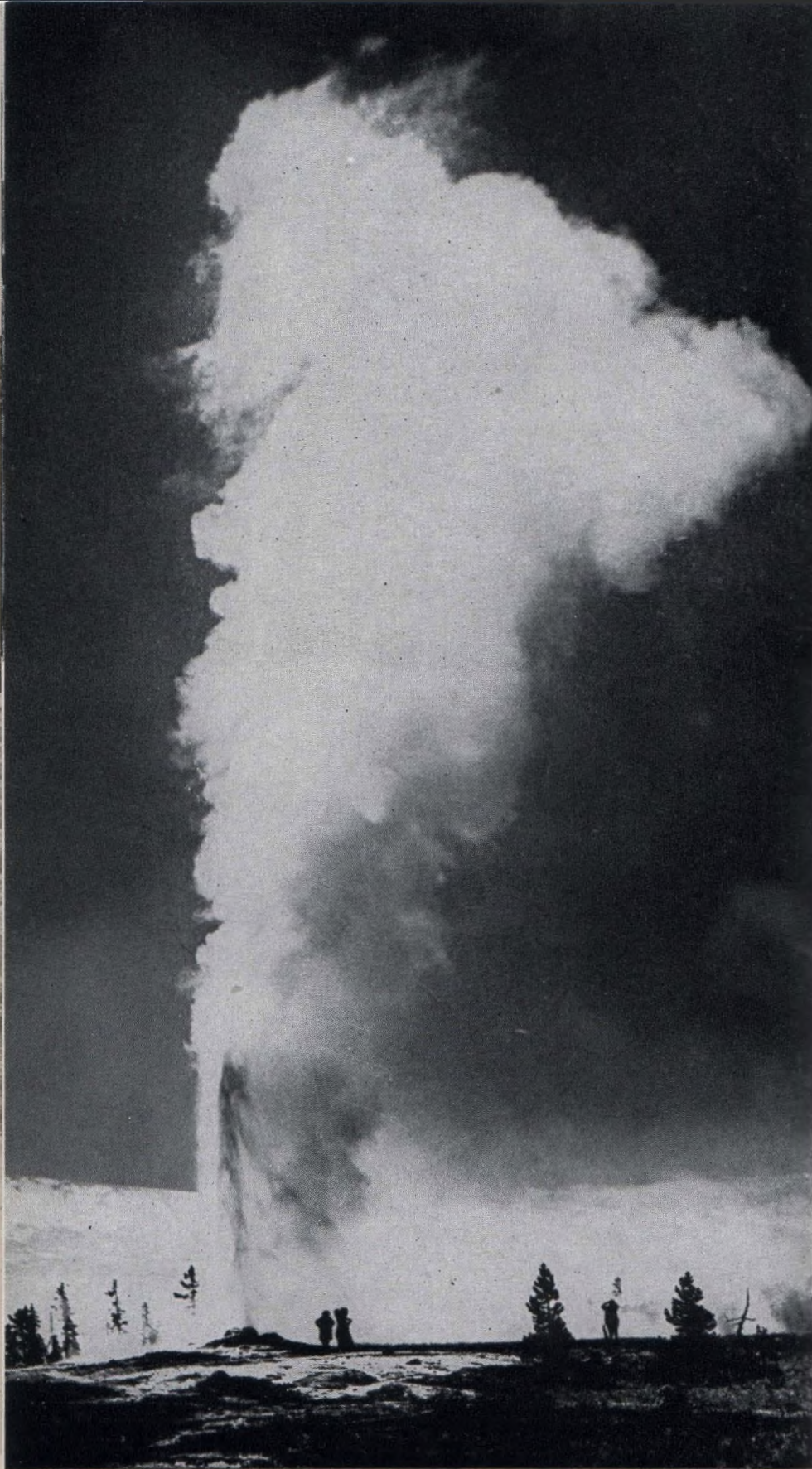
Parts of Yellowstone may well be called a manifestation of Nature in her lighter moods. There is a weird, almost "circus" quality to its hissing geysers, its steaming hot springs and to the churning, roaring, harmless mud volcanoes.

But this is only one of its aspects. Flung for more than half a hundred miles each way across the Rockies of Wyoming, Idaho and Montana, its natural wonders stand in a setting of mountain grandeur and forest loveliness.

## *One of the Greatest Wild-Life Refuges in the World*

No less striking is the abundance of wild life. Deer, elk, antelope and bison are common. As for





OLD FAITHFUL, MOST FAMOUS OF GEYSERS, YELLOWSTONE NATIONAL PARK





JUPITER TERRACE AT MAMMOTH HOT SPRINGS, YELLOWSTONE NATIONAL PARK

bears, Yellowstone is so well known for its frisky Bruins that they scarcely need be mentioned.

### *The Motor Tours of Yellowstone*

The 3-day motor tours of the Park are so arranged that the traveler spends a part of his visit at each of the four principal points of interest—Old Faithful, Yellowstone Lake, Grand Canyon and Mammoth Hot Springs. Over-night stops are spent in the luxurious hotels or comfortable individual lodges at Old Faithful and Grand Canyon.

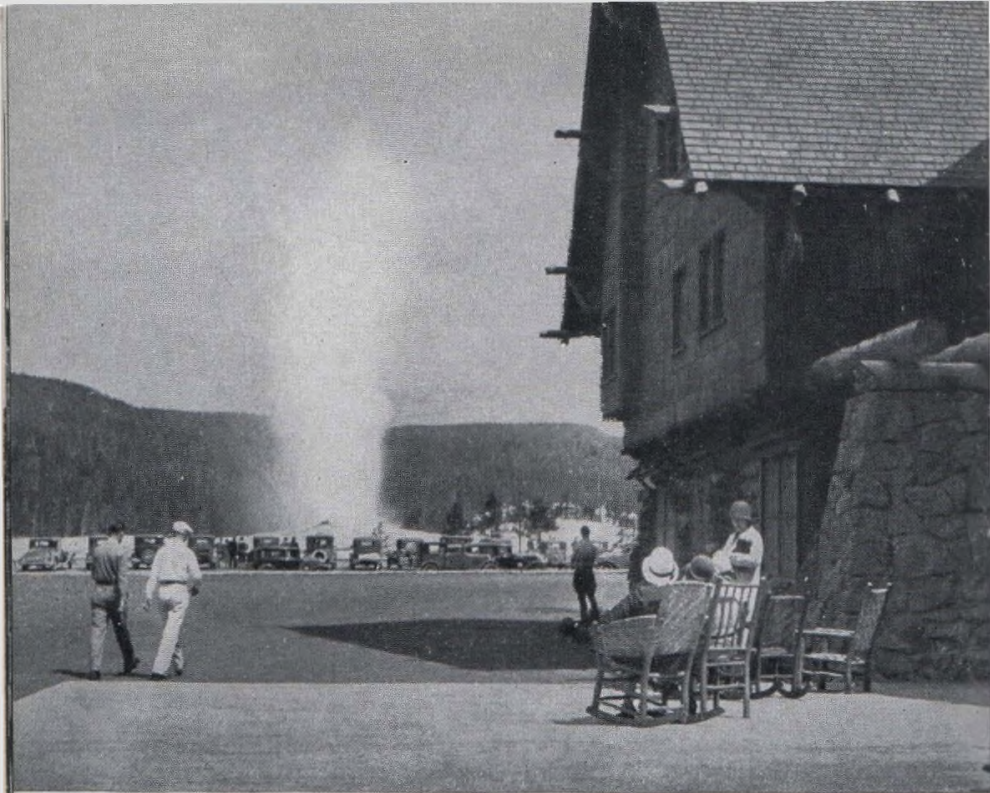
At Old Faithful, the geysers are the chief attraction—and Old Faithful itself the center of interest. Almost clock-like in its regularity, every 60 to 80 minutes it sends skyward its powerful, graceful column of steam and water to a height of 150 feet and more. Several other great geysers in the near vicinity play at varying intervals.

Yellowstone Lake owes a part of its charm to its unique location. To the first-time visitor it comes as a distinct surprise to find here, at 8,000 feet elevation, one of the largest and loveliest lakes outside the Great Lakes basin.

### *Grand Canyon and Great Fall, the Climax of Yellowstone*

For grandeur, majesty and color, no single spectacle in Yellowstone Park compares with the Grand Canyon of the Yellowstone River. Cleft 1,200 feet





OLD FAITHFUL GEYSER FROM THE VERANDA OF OLD FAITHFUL INN  
YELLOWSTONE NATIONAL PARK

through a forested plateau, its precipitous sides are tinted in a welter of glowing colors and carved and fretted in a thousand curious formations. Toward its southern end is magnificent Great Fall, nearly twice the height of Niagara.

Mammoth Hot Springs is famous for its terraced hot water springs. The algae, a form of plant life in the water, have built up delicately sculptured cornices and basins that shimmer in a remarkable harmony of color.

Employees of the hotels and lodges are recruited from colleges and universities; in the evenings they regale the guests with songs and "stunts" that leave a lasting memory of Yellowstone's hospitality.

### *Colorado and Salt Lake City on the Way*

The popularity of West Yellowstone as the entrance to the Park is not difficult to understand. Going by Union Pacific, Yellowstone visitors from the east can stop at both Denver and Salt Lake City, on the way, without additional expense for railroad fare.

Grand Teton, one of the newest National Parks, lies just south of Yellowstone and may be visited conveniently in connection with a trip to Yellowstone. The Teton range with its alpine lakes affords some of America's finest mountain scenery.

A 48-page booklet that tells in detail about Yellowstone National Park may be had for the asking.





ALONG THE OCEAN DRIVE, LA JOLLA, CALIFORNIA

# California...the All-Year Paradise

## *California's Charms Are World-Famous*

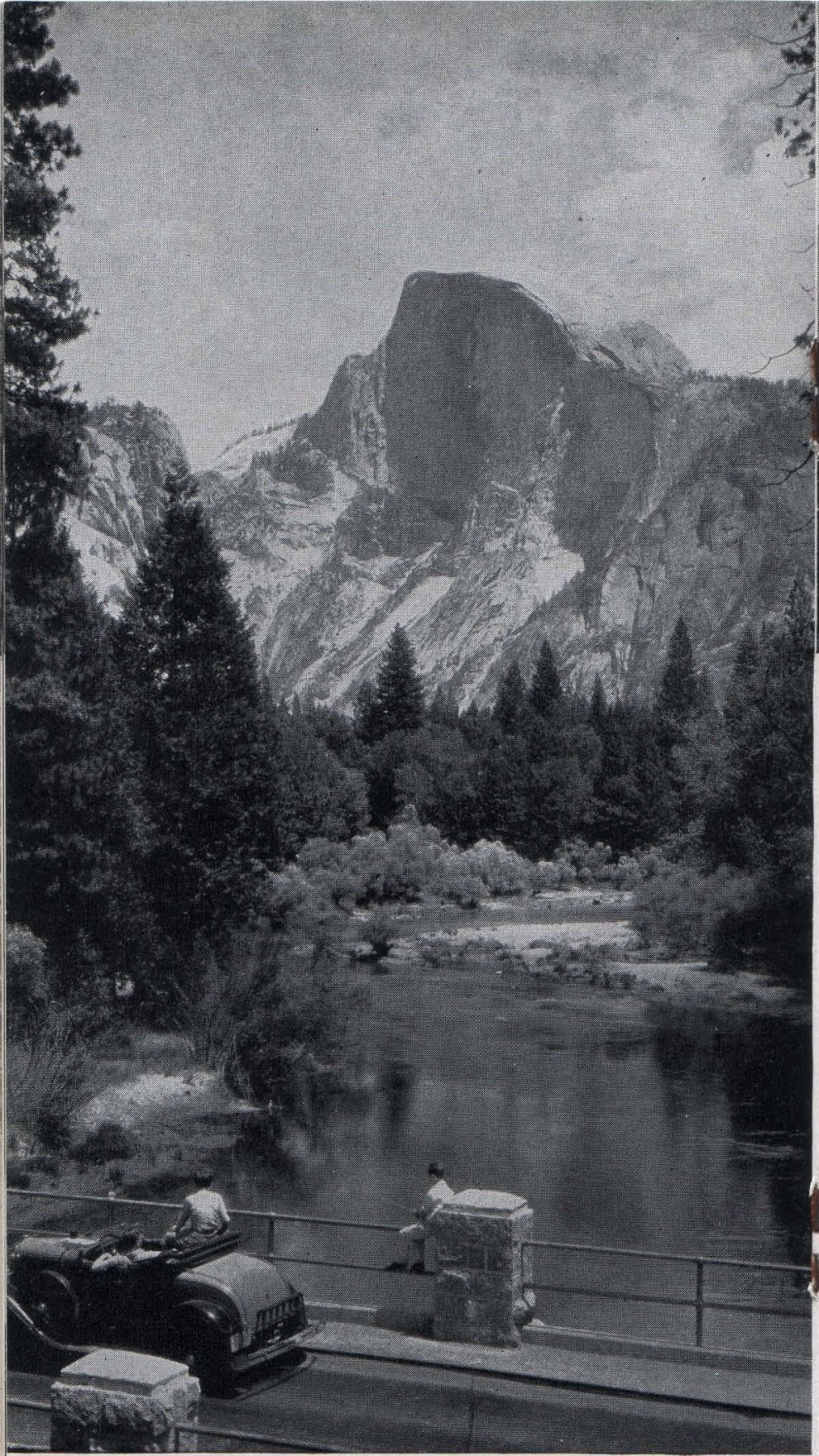
**S**ELDOM in our national history has a state sprung so quickly from pioneer obscurity to world wide fame. Almost everyone these days knows *something* about California. It is a fitting tribute that three of the Union Pacific's finest trains are in California service: the Los Angeles Limited, San Francisco Overland Limited, and Pacific Limited; splendid, completely air-conditioned trains to a splendid all-year vacation state.

One does not have to look long for reasons for California's fame; it has everything that contributes to the renown of any famous region of the West: large cities, beautiful mountain and seacoast scenery, every form of outdoor recreation.

## *Her Chief Glories Are Unlike Those of Any Other Region*

"Pshaw," you may say, "these are found anywhere west of the Rockies." But wait; you have heard only half the story. Where else can you find the giant sequoias and redwoods? . . . the glamorous atmosphere of the old Spanish missions? . . .





GLACIER-CARVED HALF DOME, YOSEMITE NATIONAL PARK





BEAUTIFUL AVALON BAY, SANTA CATALINA ISLAND, CALIFORNIA

the dream-tissue cities of the movie lots? . . . a year 'round sub-tropical climate? . . . the weird beauty of the desert?—all in one state.

### *A Choice of Two Routes by Which to Enter the State*

The traveler to California over the Union Pacific has a choice of two ways of entering the state: by the southern route, through Salt Lake City, down across Utah and a tip of Nevada, stopping, if desired, for a side trip to Zion, Bryce Canyon and Grand Canyon, or at Las Vegas, Nevada, for a short side trip to the site of Boulder Dam, an engineering project that surpasses any other in the world today, and on to Los Angeles; by the central route, across an arm of Great Salt Lake, through the high Sierra, and down to San Francisco.

### *Los Angeles and the Attractions of Southern California*

Los Angeles, fifty years ago a small town, is the largest city in the West. In its vicinity are a thousand diversions for the tourist. Adjoining it is famous Hollywood, where one may see the nation's movies in the making. To the south, across rolling hills and through miles of citrus groves, is San Diego, city and harbor. Just across the border is the festive Mexican town of Tia Juana, and the





BEACH SCENE AT SANTA MONICA, CALIFORNIA

new, fashionable tourist resort Agua Caliente, often called "The Monte Carlo of America." Off the coast from Los Angeles is lovely Catalina Island which invites a day's outing by steamer. Southern California beaches are among the finest on the Pacific.

Northward from Los Angeles are numerous thriving cities and beach towns, all the way to San Francisco; rocky headlands and sheltered coves, broad beaches and wide bays have as a background the mountains and hills that parallel the coast.

### *Yosemite, the Big Trees and the Cities of Northern California*

Famed for its romantic history, San Francisco is no less famous as a beautiful and cosmopolitan city. The races and nationalities of the world contribute to the brilliance of its polyglot population.

Northern California contributes lavishly to the visitor's enjoyment. Northward, toward Oregon, stretches the great belt of redwoods. Inland lies Yosemite with its granite domes and feathery falls and its magnificent Big Trees. South of San Francisco are the groves of twisted cypress and the charming resort towns of the Monterey Peninsula. East, across San Francisco Bay, are the interesting cities of Oakland, Berkeley and Alameda.





HORSESHOE PARK ON THE FALL RIVER ROAD, ROCKY MOUNTAIN NATIONAL PARK

### *Hawaii, "Paradise of the Pacific"*

At either San Francisco or Los Angeles the visitor can board a de luxe steamer for a trip to that sun-drenched land of tropic loveliness, Hawaii.

Union Pacific illustrated booklets on California and Hawaii describe these places in detail.

## Colorado...Nearest of the Rockies

ONE of Colorado's distinctive characteristics is that more of it is tipped on end than lies flat. Several states have mountains as high, but no others have such large and easily accessible mountain areas as has Colorado. Railroads, highways, horseback and foot trails criss-cross the state in every direction.

In Colorado, the distance a vacationist puts between himself and the rest of the world is limited only by his inclinations and the time at his disposal.

### *Denver, the Metropolis of the Rockies*

Denver is the most popular destination for Colorado visitors. A city of about 300,000 people, it is the natural gateway to the Colorado Rockies. Her mile-high location, her unique system of mountain parks and her cosmopolitan air, make Denver one of the most attractive cities of the West. It is one





PIKES PEAK THROUGH GATEWAY TO GARDEN OF THE GODS, COLORADO

of the principal terminals of the Union Pacific and thousands of people, annually, take advantage of their privilege of visiting Denver, without extra rail fare, on their way over the Union Pacific to the Pacific Northwest, Yellowstone, California or Zion, Grand Canyon and Bryce Canyon National Parks.

### *Rocky Mountain National Park*

Of all the thousands of miles of vacation trips in every direction from Denver, probably the most popular is the tour of Rocky Mountain National Park. Fifty miles on an airline from Denver, the Park includes 401 square miles of some of the noblest mountain scenery in the Rockies—or, for that matter, in the world. Every morning, during the summer, powerful motor-buses make their scheduled rounds of Denver hotels, picking up passengers for two, three or four-day tours of the Park. The Union Pacific also serves directly the towns of Greeley, Boulder and Ft. Collins, from which there is regular motor-bus service into the Park.

There are two principal ways of best seeing Colorado. One may come to Denver and spend a vacation, taking the numerous trips that start from the city, returning at the end of each day or every few days. Or, one may go to one of the hundreds of resort centers that are scattered through the mountains, and from there explore the surrounding country.





GRAND LAKE, COLORADO, FROM GRAND LAKE LODGE

### *There's Always Something to Do in Colorado*

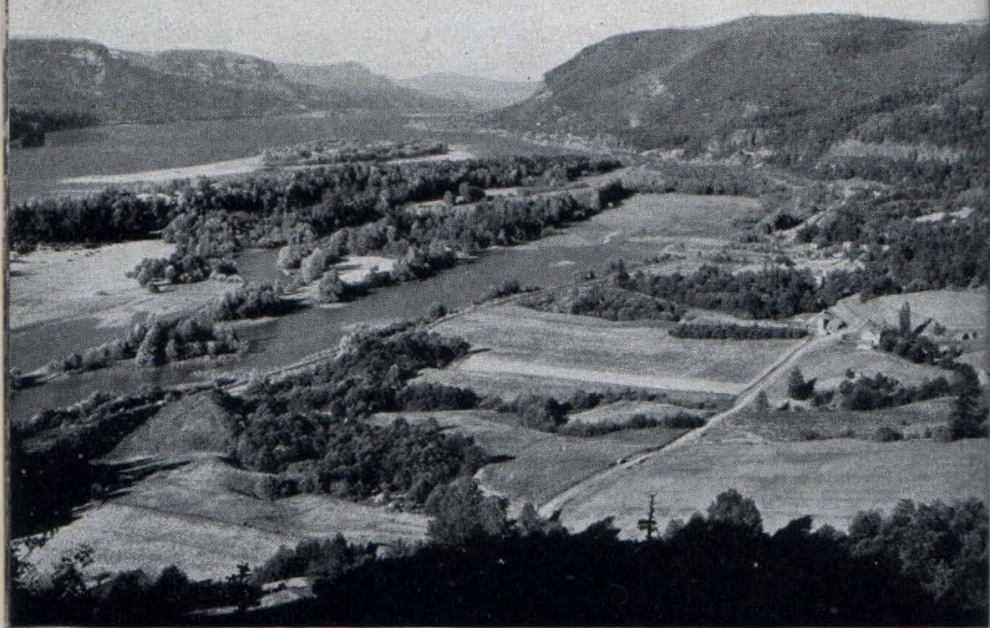
For one who loves the tranquil grandeur of the mountains and life out-of-doors, Colorado is a veritable paradise. The easy trails over and among the glacier-capped Rockies are a silent invitation to the hiker and horseman. The trout-filled lakes and streams have tempted many an angler to forget home and business. Summer nights are cool and dry; summer days are warm and sunny. Mountainsides and valleys are carpeted with wild flowers, one of which, the columbine, Colorado's state flower, gives its name to the Union Pacific's finest, completely air-conditioned train between Chicago and Denver.

With almost everyone, at one time or another, Pikes Peak has been a synonym for height and majestic grandeur, and the Colorado Springs region, with Pikes Peak as its dominant figure, is one of the most popular parts of Colorado.

The traveler has a wide choice of accommodations. Among Denver's 250 hotels one can always find the desired lodging. Colorado's resorts range from luxurious hotels with private golf courses, to tent and cabin camps tucked away in mountain valleys, whence the hardier visitors hie themselves.

"Colorado Mountain Playgrounds," a Union Pacific booklet richly illustrated with natural color photograph reproductions, gives complete information about that great scenic state. Ask for a free copy.





ALONG THE MIGHTY COLUMBIA RIVER, PACIFIC NORTHWEST

## The Vast, Evergreen Pacific Northwest

*Canada and the United States Share  
the Pacific Northwest*

**W**ALLED from north to south by the rugged Cascades, penetrated by the waters of Puget Sound, and by the mighty Columbia River, the Pacific Northwest comprises two states: Oregon, Washington, part of a third: Idaho, and one Canadian province: British Columbia.

*Through Columbia's Rugged Gorge  
by Union Pacific*

But state and national boundaries mean little to the visitor. There are really only two parts to the Pacific Northwest—the coastal and inland sections, with the Cascades forming the division. Midway between north and south, the Columbia River cleaves a marvelous gorge through the mountains to the sea. It is through this gorge that travelers journey on the completely air-conditioned Portland Rose and other fine Union Pacific trains to Portland, Tacoma and Seattle.

*Hospitality Is Freely Given*

This whole vast region is a playground, and “playtime” in the Pacific Northwest is from one





A SECLUDED INLET OF THE PACIFIC NORTHWEST

year's end to the next. Even from such large cities as Portland, Tacoma, Seattle, Spokane, Victoria, and Vancouver, the limitless evergreen forests, the lakes and streams teeming with fish, and the Pacific beaches are but a short distance away. To the resident, recreation is as important as business; the business man is never too busy to lock his desk and spend a day or two with the visitor in prideful display of the natural wonders of his country.

Two national parks have been set aside: Rainier, its noble 14,408-foot summit rising 11,000 feet above forests and glaciers, and Crater Lake, an extinct volcanic crater within which is a lake of deepest blue; the former in the Cascades of Washington, the latter in the same range in Oregon.

### *A Scenic Highway Parallels the Columbia*

First in attractiveness among the many scenic roads is the Columbia River Highway. It begins at Astoria, on the coast, extends eastward to Portland and on, through and beyond the Cascades; 337 miles of such scenery as is hardly found along any other highway in the world. It loops about high observation points, past innumerable spectacular waterfalls, through tunnels in the rock and on past the miles of wild beauty of the Columbia River Gorge. Below, above or alongside run the tracks of the Union Pacific, while handsome Union Pacific motor-buses operate along the splendid Highway.





MIGHTY MOUNT RAINIER, RAINIER NATIONAL PARK

### *Spokane Is the Capital of the "Inland Empire"*

The Inland Empire of the Pacific Northwest, with Spokane as its center, contains some of the most fertile grain land on earth. The visitor, however, is more interested in the beautiful mountain lakes it offers for his recreation.

The numerous ranges of the Pacific Northwest—the Cascades, the Blue Mountains, the Siskiyou, the Wallawas, the Sawtooth and the wild Olympics—are heavily forested and the mountain valleys are carpeted with wild flowers. The mountain streams and lakes abound in game fish.

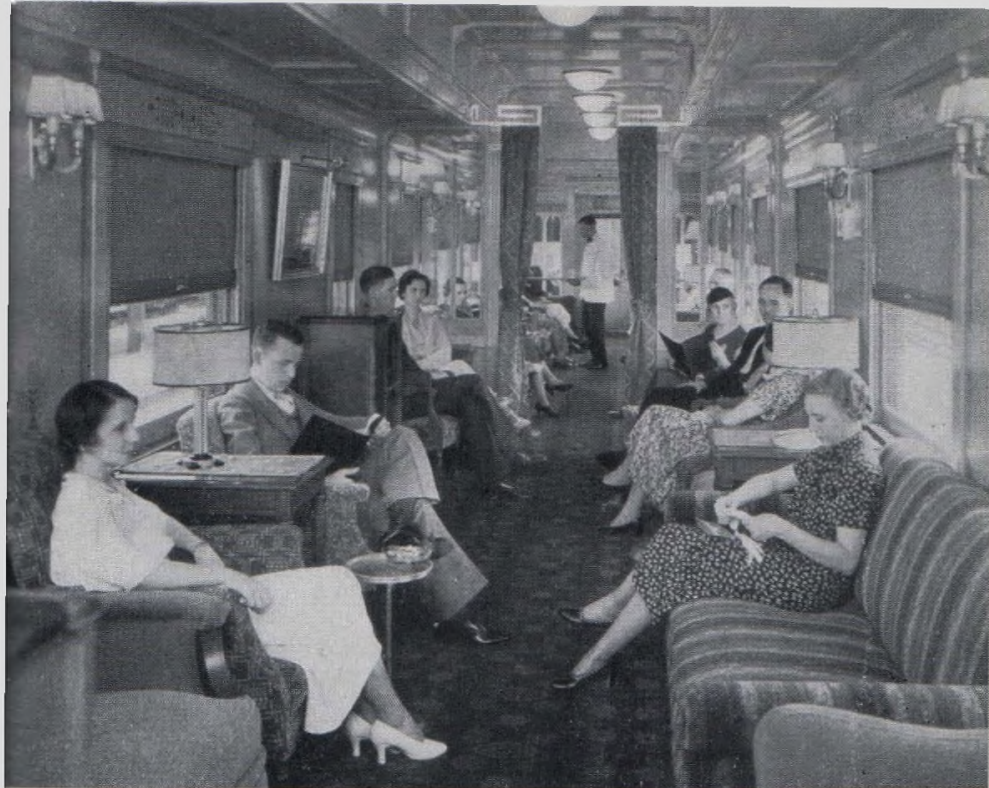
From any city on lovely Puget Sound, or inland, the visitor to the Pacific Northwest will find a score of alluring excursions. That is why so many people return, year after year, with renewed enthusiasm.

### *Pacific Northwest Ports Are Gateways to Alaska*

From Pacific Northwest ports, it is only a brief journey, by steamer, to the stupendous grandeur of Alaska. Several steamship lines offer convenient and frequent sailings from American and Canadian ports.

"The Pacific Northwest and Alaska" is an attractive Union Pacific booklet illustrating and describing this region. It has many beautiful photograph reproductions and is free for the asking.





LUXURIOUS NEW OBSERVATION CARS MAKE TRAVELING A DELIGHT  
ON UNION PACIFIC AIR-CONDITIONED TRAINS

## Escorted Tours of the West

### *A Carefree Vacation*

THE test of a service is the opinions of its users. Anyone who has ever seen the West with an escorted tour party will tell you that the company of a group of people bent on the same kind of care-free holiday, adds immeasurably to its fun.

For more than 35 years the Union Pacific, in co-operation with the Chicago & North Western Railway, has conducted parties of travelers through the West. Each member of these tours pays a fixed sum which covers all normal expenses. Every group is accompanied by an escort who handles all the troublesome details of the trip—reservations, tickets, baggage, sightseeing trips, et cetera.

Each member is free to devote the entire time to enjoyment of the trip. Seeing the West as a member of such a carefree group, is an experience long to be remembered.

For information about escorted tours, write any Union Pacific office, or to: JOHN C. POLLOCK, MANAGER, 148 South Clark St., Chicago, Ill.



# Travel Comfort...an Important Item

## *Splendid Trains to the West*

If your vacation is begun with a tiresome journey, if you return home feeling as though you needed to "rest up," half the pleasure has been missed. To assure every passenger a thoroughly comfortable journey has been the aim in planning Union Pacific trains. Most of them are completely air-conditioned. Each comes as near as is humanly possible to being "a home on flying wheels." Every train offers superlative dining car service; the lounges and observation cars have nearly all the facilities of a metropolitan club.

During the summer vacation season, five of these trains leave Chicago and Omaha daily for the West; from St. Louis and Kansas City, two trains daily—all bound for Union Pacific vacation territory, over a double track roadbed famous for its smoothness, and protected by automatic safety block signals.

Fill Out and Mail the Coupon Below:

---

MR. W. S. BASINGER, *Passenger Traffic Manager*  
Union Pacific System  
Omaha, Nebraska

*Dear Mr. Basinger:*

I am interested in a trip to\_\_\_\_\_

\_\_\_\_\_

from\_\_\_\_\_

leaving about\_\_\_\_\_

Please write me fully about the cost and the service.

Name\_\_\_\_\_

Street Address\_\_\_\_\_

City\_\_\_\_\_

State\_\_\_\_\_



## Representatives of the Union Pacific System Are Located at the Addresses Shown Below

Aberdeen, Wash.	3 Union Passenger Station, K and River Streets
Astoria, Ore.	Ninth Street Dock
Atlanta, Ga.	1232 Healey Building
Bend, Ore.	118 Oregon Street
Boise, Idaho	Tenth and Front Streets
Boston, Mass.	208 Old South Bldg., 294 Washington Street
Butte, Mont.	229 Rialto Bldg., 4 S. Main Street
Cheyenne, Wyo.	Union Pacific Station
Chicago, Ill.	City Ticket Office, 6 S. LaSalle Street
Cincinnati, Ohio	705 Dixie Terminal Building
Cleveland, Ohio	1006 (Tenth Floor) Terminal Tower Building
Council Bluffs, Ia.	C. & N. W. Broadway Station
Dallas, Texas	1029 Kirby Bldg., Main and Akard Streets
Denver, Colo.	City Ticket Office, 601 Seventeenth Street
Des Moines, Ia.	407 Equitable Bldg., 6th and Locust Streets
Detroit, Mich.	508 Transportation Bldg., 131 Lafayette Blvd., West
East Los Angeles, Calif.	5454 Ferguson Drive
Eugene, Ore.	1691 Olive Street
Fresno, Calif.	207-8 Rowell Bldg., Tulare Street and Van Ness Avenue
Glendale, Calif.	129 South Brand Boulevard
Hollywood, Calif.	City Ticket Office, Christie Hotel, 6732 Hollywood Boulevard
Kansas City, Mo.	City Ticket Office, 805 Walnut Street
Lewiston, Idaho	Room 7, Union Depot
Lincoln, Neb.	City Ticket Office, Woods Brothers Bldg., 130 So. 13th Street
Long Beach, Calif.	City Ticket Office, 220 Pine Avenue
Los Angeles, Calif.	City Ticket Offices, 732 S. Broadway and 451 S. Main Street
Milwaukee, Wis.	814 Warner Bldg., 212 W. Wisconsin Avenue
Minneapolis, Minn.	890 Northwestern Bank Bldg., 620 Marquette Avenue
New Orleans, La.	1007 Carondelet Bldg., 226 Carondelet Street
New York, N. Y.	Room 402, 521 Fifth Avenue
Oakland, Calif.	215 Central Bank Bldg., 436 14th Street
Ogden, Utah	Union Passenger Station
Omaha, Neb.	City Ticket Office, 301 S. 16th Street
Pasadena, Calif.	Union Pacific Station, 205 West Colorado Street
Philadelphia, Pa.	904 Girard Trust Co. Bldg., 15th and Market Streets
Pittsburgh, Pa.	216 Oliver Bldg., Smithfield Street and Sixth Avenue
Pomona, Calif.	Union Pacific System Passenger Station
Portland, Ore.	City Ticket Office, 701 S. W. Washington Street
Redlands, Calif.	4 Orange Street, Fisher Bldg.
Reno, Nev.	200 Lyon Bldg., Second and Center Streets
Riverside, Calif.	Union Passenger Station, 7th and Vine Streets
Sacramento, Calif.	217 Forum Bldg., 1107 Ninth Street
St. Joseph, Mo.	City Ticket Office, 517 Francis Street
St. Louis, Mo.	203 Carleton Bldg., 308 North 6th Street
Salt Lake City, Utah	City Ticket Office, Hotel Utah, Main and So. Temple Sts.
San Diego, Calif.	City Ticket Office, 345 Plaza Street
San Francisco, Calif.	City Ticket Office, 355 Geary Street, Hotel Stewart
San Jose, Calif.	401 First National Bank Bldg.
San Pedro, Calif.	City Ticket Office, 101 West 7th Street
Santa Ana, Calif.	City Ticket Office, 305 North Main Street
Santa Monica, Calif.	City Ticket Office, 309 Santa Monica Boulevard
Seattle, Wash.	204 Union Station, and City Ticket Office 1403 Fourth Avenue
Spokane, Wash.	City Ticket Office, North 1 Post St., and Union Station
Tacoma, Wash.	City Ticket Office, 114 South Ninth Street
Toronto, Ontario	201 Canadian Pacific Bldg., 69 Yonge Street
Tulsa, Okla.	320 Kennedy Bldg., 319 S. Boston Street
Walla Walla, Wash.	Baker Bldg., Main and Second Streets
Yakima, Wash.	Union Pacific Bldg., 104 West Yakima Avenue

**Department of Tours**  
(UNION PACIFIC SYSTEM—C. & N. W. Ry.)  
148 S. Clark Street, Chicago, Ill.

**J. L. AMOS,**  
Asst. Traffic Manager  
SALT LAKE CITY, UTAH

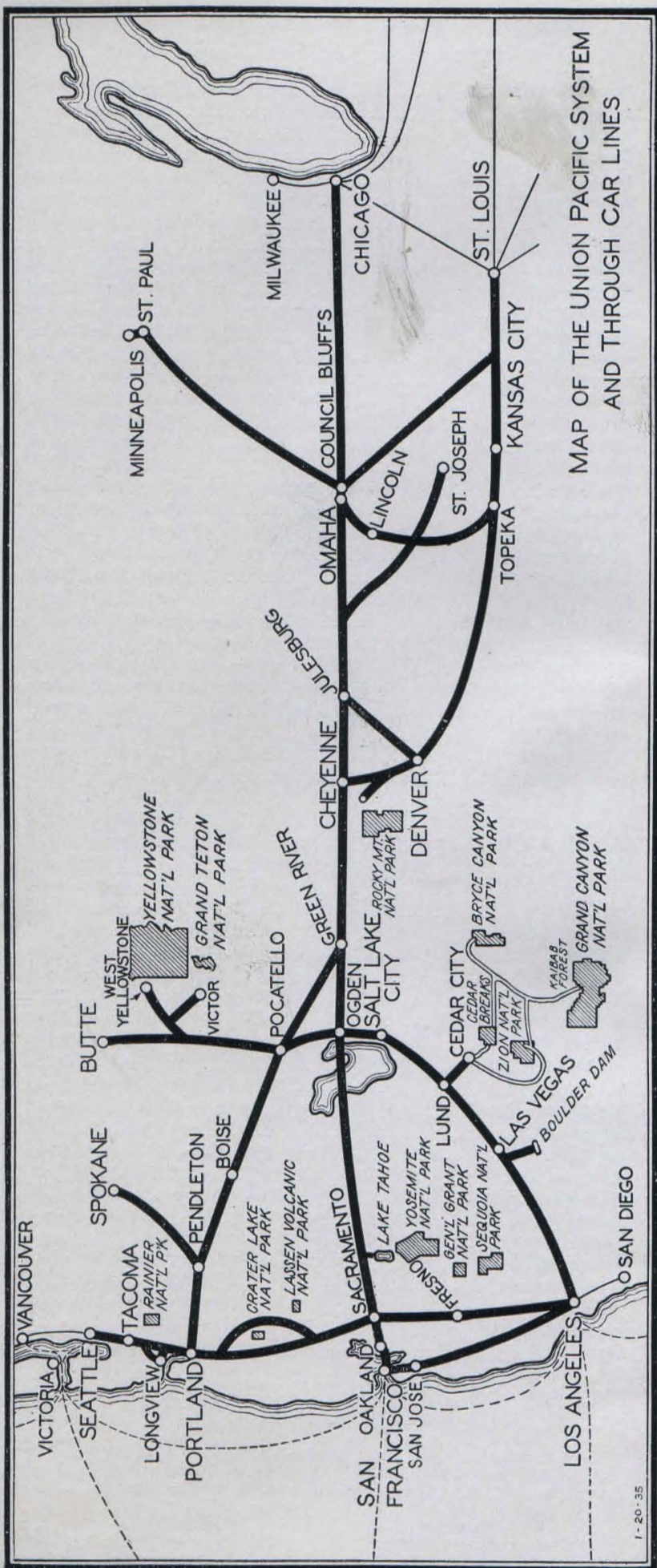
**J. C. CUMMING,**  
Asst. G. F. & P. Agent  
PORTLAND, ORE.

**L. E. OMER,**  
General Passenger Agent  
LOS ANGELES, CALIF.

**W. S. BASINGER,**  
Passenger Traffic Manager  
OMAHA, NEB.

**C. J. COLLINS,**  
Asst. Passenger Traffic Mgr.  
OMAHA, NEB.





1-20-35







# WESTERN WONDERLANDS



## UNION PACIFIC