

When you Travel...

Regardless of how you have been accustomed to go, investigate the startling new advantages of travel in coaches and chair cars, tourist and standard Pullman sleeping cars on Union Pacific's fine, fast trains.

Consider the Cost

When time, fares, cost of meals and incidentals are included, there is no form of travel so inexpensive as travel on Union Pacific's famous fleet of trains. Meal costs have been cut and the time you save by train reduces the number of meals en route and greatly lowers the cost of incidentals. With rail fares lowest ever, it is cheaper to travel by train than to drive your own car.

Consider the Safety

Traveling by train, you avoid the discomforts and hazards of highway travel. Insurance tables prove that you are safer on a train than in your own home. Your family, your friends, your office know exactly where you are every minute of the time and have every assurance of your safety, comfort and well-being.

Consider the Convenience

You have only to step aboard a Union Pacific train and your travel worries and cares are over. The engineer is your chauffeur.

There are no detours—no stops for eating or sleeping. You relax and rest in carefree comfort that makes your trip a delightful travel experience.

Consider the Comfort

All Union Pacific through-trains are completely air-conditioned—the temperature and humidity "just right" always, regardless of the weather outside. No dust, no dirt, no drafts, and—noises are reduced to a whisper. No other method of travel offers this unique feature.

Big roomy cars and deep-cushioned seats of the latest type afford generous space for your utmost comfort. No crowding or cramped positions. You can relax, read, sleep, work, walk around if and when you wish. Large smoking and lounging rooms, modern toilet facilities with hot and cold running water—in fact, "all the comforts of home" are provided to make your trip on Union Pacific trains a most delightful travel experience.

When you travel, consider ALL the advantages of travel by train via Union Pacific TODAY. Any Union Pacific representative will be pleased to inform you fully on any and all features of our exceptional travel service and will assist you in getting maximum travel comfort, convenience, and safety at minimum cost.

HERE ARE A FEW SAMPLE ONE-WAY COACH FARES

Between	Chicago	Omaha	Kansas City	Denver	Salt Lake City
Los Angeles.....	\$34.50	\$27.00	\$27.00	\$20.00	\$10.00
San Francisco.....	34.50	27.00	27.00	20.00	
Portland.....	34.50	29.00	32.50	23.00	16.50
Tacoma.....	34.50	29.00	32.50	24.50	19.00
Seattle.....	34.50	29.00	32.50	24.50	19.00

In addition to low one-way and round trip coach fares, Union Pacific offers attractive one-way and round trip fares to and from all the West for travel in tourist sleeping cars and standard Pullman sleepers.

The Rail Way



is the Safe Way

PRINTED IN U. S. A.

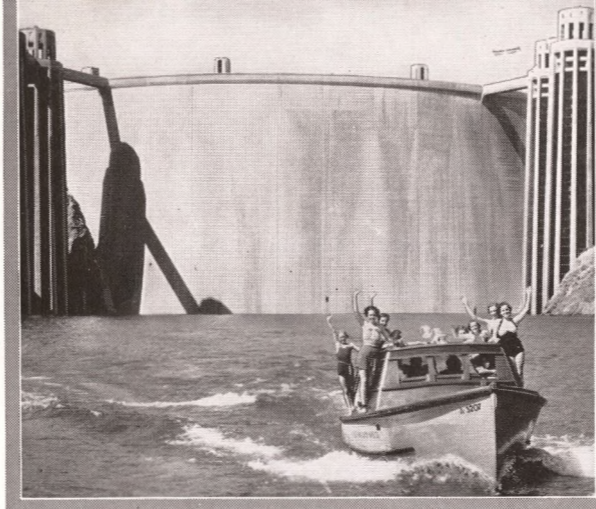
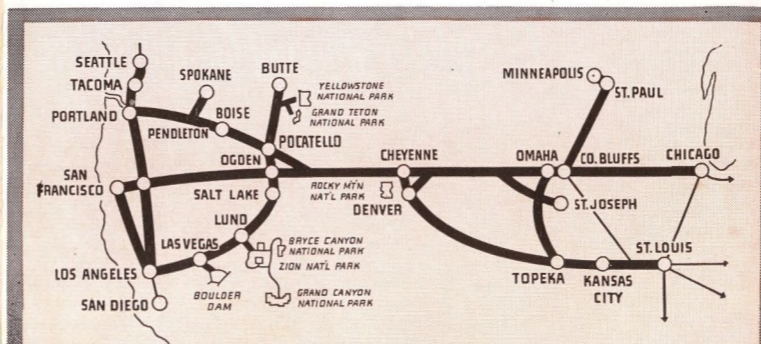
UNION PACIFIC serves fifteen National Parks and more of the West than any other railroad. Its famous fleet of fine, fast trains, completely air-conditioned, offer the utmost in safe, comfortable travel through the heart of the scenic, historic West. In addition to linking the major cities of the far West and Pacific Coast with the middle West and the East, by way of Chicago and St. Louis, Union Pacific offers splendid daily through-train service direct to the nation's most popular and spectacular vacation playgrounds. For extraordinary vacations at no greater cost than for ordinary vacations nearby, Union Pacific offers such colorful regions as:

- YELLOWSTONE - GRAND TETON
- ZION - BRYCE CANYON - GRAND CANYON
- YOSEMITE - RAINIER
- ROCKY MOUNTAIN NATIONAL PARKS
- WESTERN DUDE RANCHES
- BOULDER DAM
- CALIFORNIA - HAWAII
- PACIFIC NORTHWEST - ALASKA

Whenever you travel, wherever you go, travel by train. And when you go, let Union Pacific be your host on one of these popular trains—The Challenger; the famous all-Pullman Los Angeles Limited; San Francisco Overland Limited; Portland Rose; Pacific Limited; The Columbine; or The Streamliner—"City of Portland". And, this summer, you may enjoy the unusual treat of traveling on one of the newest of Union Pacific's fleet, Pullman and coach-equipped Streamliners—"City of Los Angeles", "City of San Francisco", or "City of Denver".

For full information about travel anywhere, ask your nearest Union Pacific representative or write to

C. J. COLLINS W. S. BASINGER
Assistant Passenger Traffic Manager Passenger Traffic Manager
Omaha, Nebr. Omaha, Nebr.



See Colossal Boulder Dam on the way to or from California

The West's newest and one of its greatest spectacles, Boulder Dam—with its Lake Mead, largest man-made lake in the world—is an exclusive Union Pacific side trip en route to or from Southern California. It can be visited easily and inexpensively on a 29-mile motor trip in comfortable Union Pacific buses from gay, fascinating Las Vegas, Nevada.

COST FROM LAS VEGAS

Las Vegas to Boulder Dam via Boulder City...\$1.75
Side trip Boulder City to Boat Landing... .50
Trip on Lake Mead... .75

Meal Prices at Hotels, Las Vegas and Boulder City and Union Pacific Restaurant, Las Vegas

Club Breakfasts...50c Club luncheons...65c
Club dinners...\$1.00

FOR THOSE REMAINING OVERNIGHT

Hotel Rates for comfortable, air-conditioned rooms with bath at Las Vegas or Boulder City.
Single rooms...\$3.50 Double rooms...\$5.00 to \$6.00

The cost will vary according to the length of your stay. On tickets reading via the Union Pacific all the way in either direction between Omaha, Nebr., Kansas City, Mo., St. Joseph, Mo., or Leavenworth, Kans., and Southern California, free side trip is given from Las Vegas to Boulder City and return, effecting a reduction of \$1.20 in bus fare. Convenient schedules make it possible for passengers to visit Boulder Dam between trains.

TRAIN SCHEDULES

WESTBOUND		EASTBOUND	
No. 21	No. 7	No. 8	No. 14
12:05 PM	9:30 PM Ar.	Las Vegas, Nev.	Lv. 5:45 AM
			5:45 PM

BUS SCHEDULES

(Going—Read Down)		(Returning—Read Up)	
1:00 PM	7:00 AM Lv.	Las Vegas, Nev.	Ar. 11:10 AM
1:40 PM	7:40 AM Ar.	Boulder City, Nev.	Ar. 10:20 AM
2:05 PM	8:05 AM Ar.	Boulder Dam	4:40 PM
2:45 PM	8:35 AM Lv.	Boulder Dam	
3:25 PM	9:15 AM Ar.	Lake Mead	Lv. 10:00 AM
			4:10 PM

Ask your nearest Union Pacific representative for descriptive leaflet giving complete information about Boulder Dam. At Las Vegas, the Union Pacific Agent will arrange all details of your Boulder Dam side trip.

THE Challenger



A NEW EXPERIENCE
IN Luxurious Comfort
SPEED · SAFETY AND
Travel Economy —

A NEW EXPERIENCE
IN Luxurious Comfort
SPEED · SAFETY AND
Travel Economy —



● The ladies' lounge and dressing rooms in coaches on The Challenger are commodious, and well-equipped.



● Deep-cushioned individual, reclining seats in all coaches is another reason for the Challenger's popularity.



● Mothers traveling with babies especially appreciate the attentive services of the Stewardess-Registered Nurse.



● Soft pillows furnished free to coach passengers add tremendously to their restful comfort, day and night.

THE Challenger

typifies Union Pacific's determination to provide the utmost in luxurious travel comfort at lowest possible cost

● This unique train, the only all-coach-tourist sleeping car train in America, travels through the heart of the scenic, historic West on the same fast, daily schedule between Chicago-Omaha-Salt Lake City-Los Angeles, as that of the famous all-Pullman Los Angeles Limited. The Challenger is completely air-conditioned. In the smart, new "coffee-shop" diner, guests enjoy 3 wholesome meals a day for only 90c. Tasty meals, attentive service and the gay atmosphere of the dining car, make meal time one of the most delightful experiences of a transcontinental journey.

Fresh, soft pillows are furnished free to passengers in the attractive new coaches. Drinking cups are free. To insure restful sleep, lights are dimmed at night—at 10:00 o'clock, or earlier, at passengers' request. To further assure our patrons uninterrupted rest and sleep, they are not disturbed about ticket matters while enroute.

Among the most popular features of The Challenger are the special coaches for the exclusive use of women and children. With large dressing rooms and smoking lounges, they give women traveling alone and mothers with small children the privacy and room they enjoy so much.

Union Pacific was the first railroad, and to date the only railroad, to provide Stewardess service. The stewardesses on The Challenger are registered nurses. Their services are available, without charge, to all guests on the train. Porter service is also available without charge to passengers in the coaches.

If you would save time; economize on costs; travel in safety without a care; rest, relax and enjoy yourself to the utmost in the midst of comforts, conveniences and services not possible by any other method of transcontinental travel: ride The Challenger!



BREAKFAST . . 25¢

Bacon and eggs, any style
Hot rolls or bread
Coffee or milk

LUNCHEON . . 30¢

Baked Chicken Pie
Mashed potatoes-Vegetable
Bread and Butter
Coffee or milk

DINNER . . 35¢

Roast loin of Pork
Brownied potatoes-Vegetable
Bread and butter
Coffee or milk

These are sample "Challenger" meals. Menus are varied daily. And in addition to these table d'Hote meals, guests may order from a list of tasty a la carte suggestions, moderately priced, including soup, salad, dessert items. Or, for a light snack, sandwiches are 10c, coffee or milk 5c.



● The attractive tourist sleeping cars on The Challenger were standard Pullman sleeping cars a few years ago.



● There's always room in The Challenger coaches. More cars are added, when necessary, to prevent crowding.



● The smart "Coffee-Shop" dining car is available to guests for recreation purposes, except during meal hours.



● Over a half million dollars were invested to provide low cost travel comfort on The Challenger.