

# CALIFORNIA



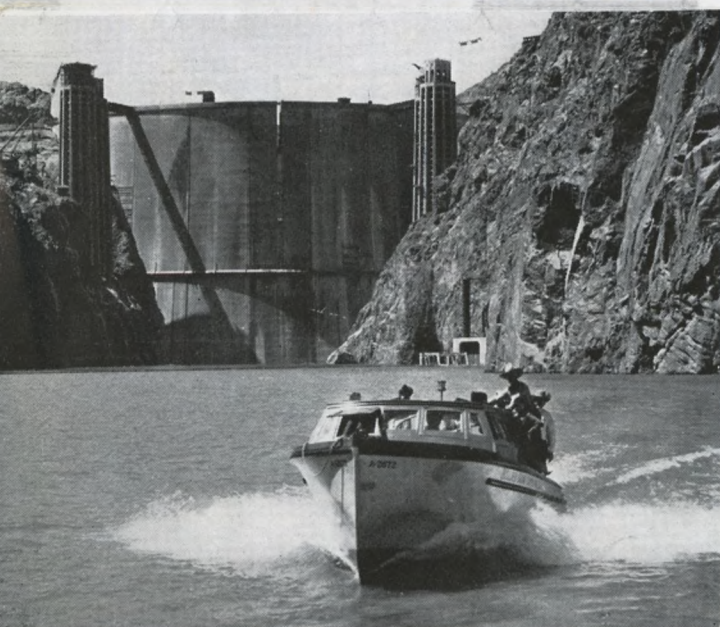




*Santa Barbara's Mission is one of the most famous shrines on the West Coast.*



*California's "Big Trees" are among the world's oldest living giants.*



*Gigantic Boulder Dam is a thrilling sight from the newly created Boulder Lake.*

# California Easily

## VIA UNIO

It's surprising how much of California's unusual attractions vacation travelers can see and enjoy leisurely in a two weeks trip from any part of the country.

- Including the week ends before and after the usual vacation period, 10 to 12 or 13 days can be spent in California—at living costs and recreation prices that are within the reach of every one.
- Allow a couple days to "do" Los Angeles—a day for Hollywood and the beach cities nearby—another day or two for the great Exposition at San Diego, with time out for a run down to Agua Caliente for an interesting visit in Old Mexico. Figure at least two days for magnificent Yosemite National Park and the Giant Redwoods, and another day or two for San Francisco and the bay regions.
- With all these famous sights and scenes in a California itinerary, there's still room for added treats in picturesque Riverside, gay Catalina, sea-side Santa Barbara, Del



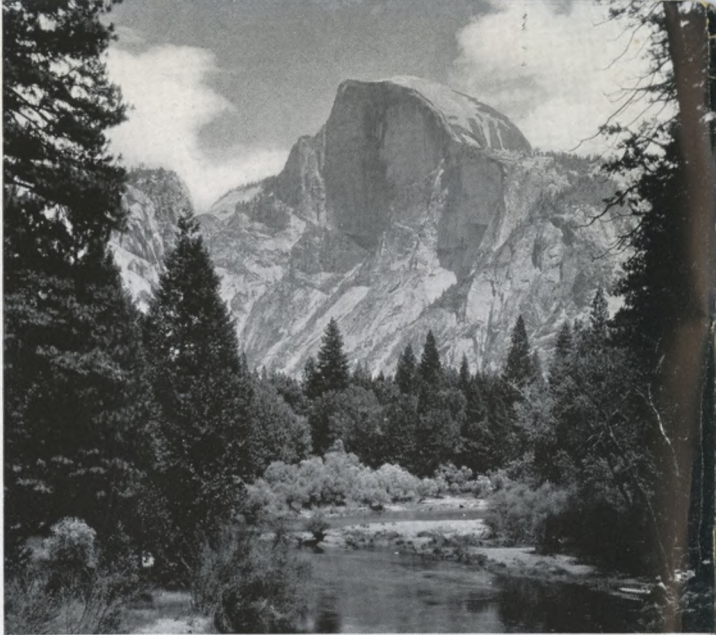


# ly in 2 Weeks

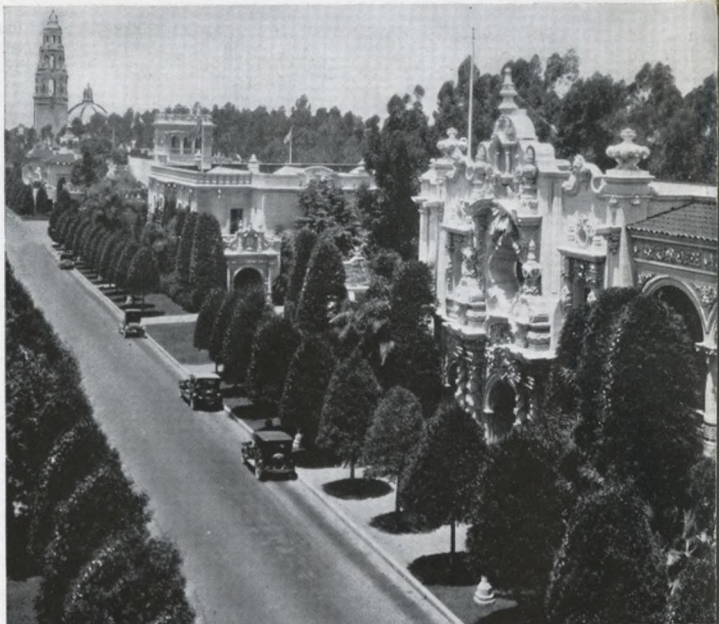
## N PACIFIC

Monte, dozens of other delightful places.

• And, via Union Pacific to and from California, travelers have a choice of three splendid air-conditioned trains—Los Angeles Limited, San Francisco Overland Limited, Pacific Limited. • If time permits extending their trip to include the Pacific Northwest, they may add the thrill of a return trip on Union Pacific's new, high-speed train, "The Streamliner—City of Portland," or may enjoy the air-conditioned comfort of the popular Portland Rose. • However they go or return, if it's via Union Pacific they are within easy reach of a wide variety of the West's outstanding attractions. • Colorado and its "Rockies," Yellowstone, Grand Teton, Zion, Bryce Canyon, Grand Canyon National Parks, gigantic Boulder Dam, are just a few of the added delights which can be easily included in a California itinerary if you route your patrons via Union Pacific.



Half Dome is one of Yosemite National Park's most spectacular sights.

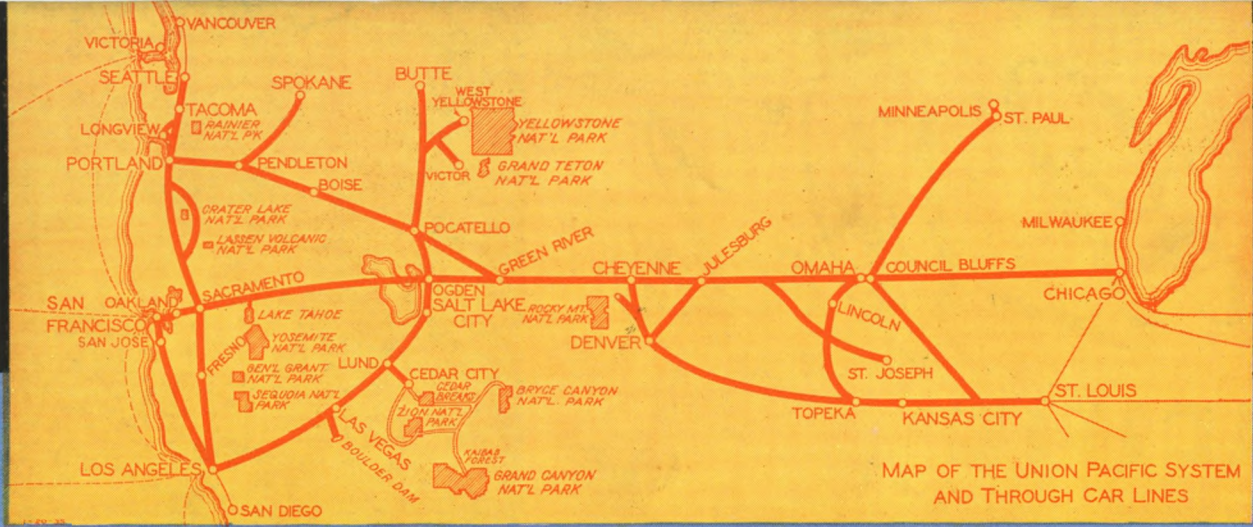


The California Pacific International Exposition is now in full sway at San Diego.



San Francisco's Chinatown is a feature attraction of this bay city's delights.





**N**OTHING could be simpler in mapping out a trip West than to specify Union Pacific all the way, first — then select the desired stopovers and side-trips and you'll find convenient schedules of fine, fast air-conditioned Union Pacific

trains to fit perfectly into the picture of a well-planned, time saving, economical travel experience for your patrons. Remember, Union Pacific serves 15 National Parks and more of the West than any other railroad.

## ● LOS ANGELES LIMITED

Fast, non extra fare train, via the Boulder Dam Route to Southern California. Barber, valet, bath service. Maid, manicure. Radio, soda fountain.

## ● SAN FRANCISCO OVERLAND LTD.

Companion train of Los Angeles Limited, with identical service features. Fastest time via the direct Overland Route between Chicago and San Francisco.

## ● PACIFIC LIMITED

Between Chicago, Portland, Tacoma, Seattle. New, improved service. Faster schedules now in effect.

## ● PORTLAND ROSE

Most popular daily train between Chicago and Portland, Tacoma, Seattle. Barber, valet, bath service. Luxurious club-observation car with soda fountain, radio.

## ● THE STREAMLINER

CITY OF PORTLAND

Saves full day between Chicago, Portland and Pacific Northwest. High-speed with safety at regular low fares for coach and Pullman travel. New low-cost coach meals. "Sailings" every 5 days.

## ● THE COLUMBINE

"Flower of travel comfort." Colorado's own train between Chicago, Omaha, Denver. Barber, valet, bath service. Soda fountain, radio.

All of Union Pacific's principal trains are air-conditioned. Dining car "meals that appeal" are a feature on all trains and economical, off-the-tray service is provided in coaches at meal time.

L. E. OMER  
General Passenger Agent  
Los Angeles, Calif.

J. L. AMOS  
Assistant Traffic Manager  
Salt Lake City, Utah

J. C. CUMMING  
Assistant G. F. & P. Agent  
Portland, Oregon

C. J. COLLINS, Assistant Passenger Traffic Manager, Omaha, Nebr.

W. S. BASINGER, Passenger Traffic Manager, Omaha, Nebr.

I. A. MEDLAR CO., OMAHA 7-1-38

# UNION PACIFIC