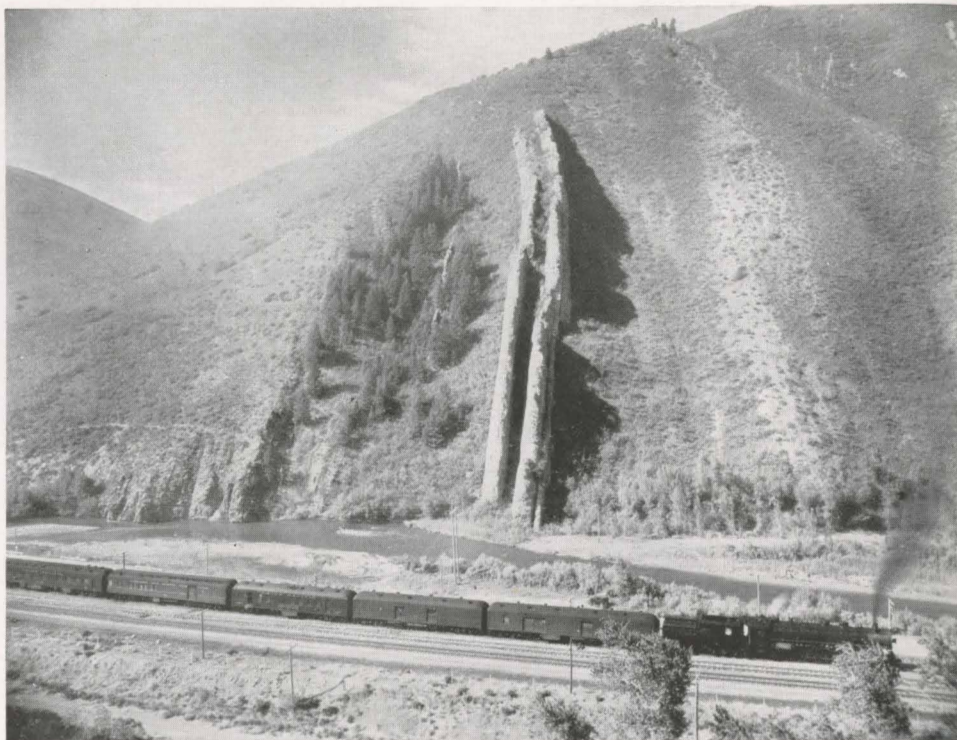


# DUDE RANCHES

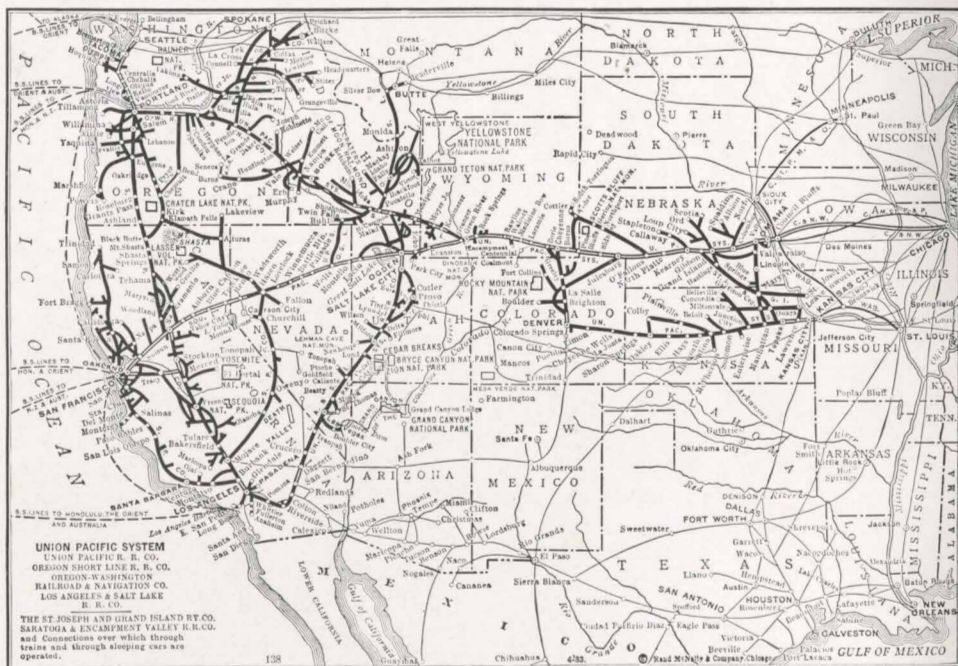
OUT  
WEST







A UNION PACIFIC TRAIN PASSING DEVIL'S SLIDE, UTAH



# MAP OF

## WESTERN WONDERLANDS AND UNION PACIFIC SYSTEM

SEE RANCH WRITEUPS FOR NEAREST UNION PACIFIC STATION—INDEX TO DUDE RANCHES ON PAGE 59



## Dude Ranches Out West

"Dude Ranch" is not an expression that carries a clear-cut meaning to everyone, for a dude ranch is neither a summer hotel nor a farm where dudes "ranch."

In the West every farm is a ranch; they vary in size too, from the small ranch to five or ten thousand acres, and, in the case of some of the stock and grain ranches, even larger.

Most of the ranches are in settings of appealing beauty with mountains, lakes and streams in their very yards, or at least close by. Their hospitality is far more genuine, spontaneous and personal than that of an ordinary summer resort.

Many eastern families have for years been spending their vacations at these ranches, riding in Western cowboy saddles, hiking, fishing and hunting in the real Western outdoors. Visitors or guests at the ranches are honorably referred to as "dudes," hence "dude ranches"—a ranch where "dudes" are entertained. The rancher is a "dude wrangler." He, his cowboys, and the rest of his business associates are the "outfit."

Each ranch has its "brand" which is a letter, insignia or often the initials of the owner. It is a mark which is "branded" or burned into all the stock on the ranch. In the early days changing brands on stolen cattle developed into a fine art with cattle thieves who were dealt with on the spot if caught. Today the brand is not only to distinguish the stock of the ranch which roam the open ranges and often



mix with stock from other ranches, but it serves as the trade mark as it were of each particular dude ranch. It is used as a decoration on linen, chinaware and frequently as a decorative motif.

In the Union Pacific dude ranch country may be found dude ranches of every description, with all degrees of comfort and accommodations. Some ranches are equipped with cabins having hot and cold running water and bath tubs, others with pitcher and basins and portable bath tubs. Some have large dining pavilions with white-coated colored waiters, others dine their guests or "dudes" in their own home at a large table, "family style."

The "dude wrangler" tries to select congenial guests who love the out-of-doors. Most ranches ask for references and investigate them carefully. Many "dudes" stay for weeks, and if not congenial or sociable with other guests they would not enjoy their own vacation nor would the others.

One has to make advance arrangements too, for the reason that guests return year after year and often make reservations for next year before going back home. They feel that way after one dude ranch vacation. People find at their favorite ranch the ideal conditions for the sort of vacation they term perfect. Then, too, the ranch is the rancher's home—his guests become fast friends to a surprising degree.

Many of the dude ranches served by Union Pacific lines are in Wyoming—in Jackson Hole and the adjacent territory, or in the southeast, near Laramie and Cheyenne. Jackson Hole, the old Western name of the Snake River Valley, is just south of Yellowstone National Park and east of the newly established Grand Teton National Park. Once reputed to be the secluded refuge of outlaws and cattle "rustlers," it is now known as one of the best fishing and hunting regions, and one of the most beautiful, scenically, in the country. It is a strip of lovely semi-wilderness, 65 miles long and 10 to 20 miles wide, fringed by huge forests and hemmed in by mountains. Jackson, retaining much of the frontier atmosphere, yet equipped with all the essential conveniences of civilization, and Moran, on beautiful Jackson Lake are, the principal towns. A genuine Western rodeo is staged every year at Jackson, at which riders from the various ranches compete. The Jackson Hole ranches are reached via Union Pacific to Victor, Idaho, thence by ranch auto; also via Union Pacific to Rock Springs, Wyoming, thence by auto stage through Pinedale; or via Yellowstone Park.

Teton Transportation Co. maintains daily bus service June 10th to September 20th, between Victor, Idaho, and Teton Lodge, Moran, Wyoming, in both directions.

West Yellowstone, Montana, is also the gateway to three fine ranches in the Shoshone National Forest on the eastern border of Yellowstone Park. One may make a complete tour of the Park en route to and from these ranches. Other fine ranches in southwestern Montana and near Livingston, Montana, also use the West Yellowstone gateway.



Other Western Montana ranches which are among the finest in the dude ranch industry, all members of the Dude Ranchers' Association, are reached through the Union Pacific terminal of Butte, Montana.

There are many friendly ranches, too, on the great Laramie Plains, nestling at the base of the Medicine Bow Range, and looking southward upon the blue mountains of Colorado, northward over the Continental Divide.

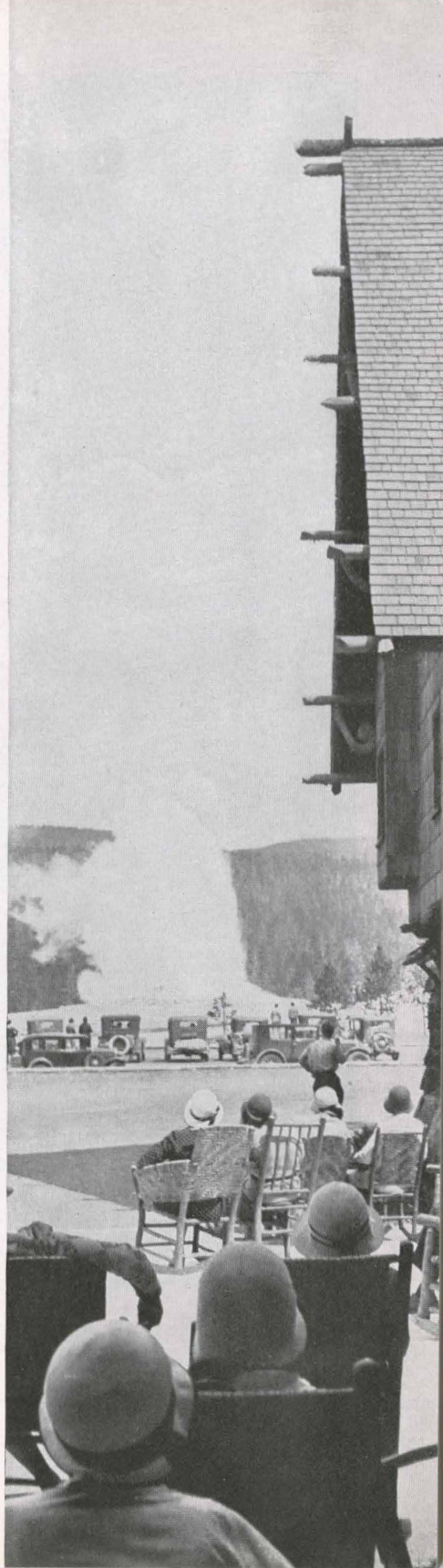
Other fine ranches are located in the wilder portions of the Colorado mountains; in the wild and rugged country of central Idaho; in the Blue Mountain region of Oregon; and on the picturesque Mojave Desert, or in mountain regions of California. Most convenient Union Pacific stations are mentioned.

### See Yellowstone and Grand Teton National Parks En Route —Via Union Pacific

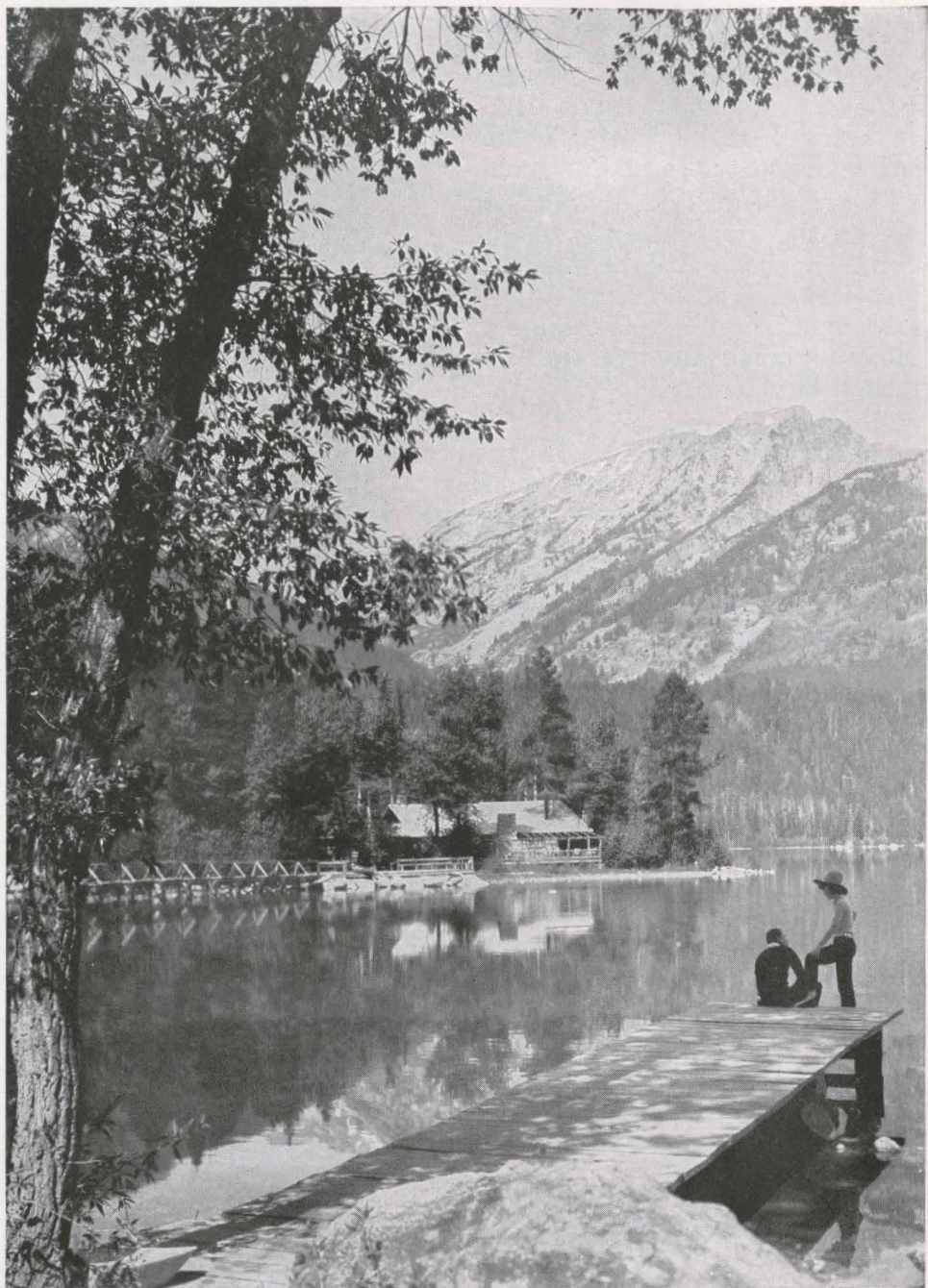
No description can convey the strange thrill of Yellowstone Park—the weirdest, most curiously impressive spot on earth. Its marvelous geysers leap skyward amid subterranean rumblings. Its wild bears beg tourists for sweets. Its Grand Canyon and falls are magnificent.

The soaring pinnacles of the Teton Range are not excelled in picturesqueness by any mountains in the United States.

The regular tour of Yellowstone Park occupies but  $4\frac{1}{2}$  days. West Yellowstone (the Union Pacific entrance) is the popular gateway, the rail station directly on the boundary. Visitors to Jackson Hole may easily go or return via Yellowstone and Grand Teton National Parks during Park season.





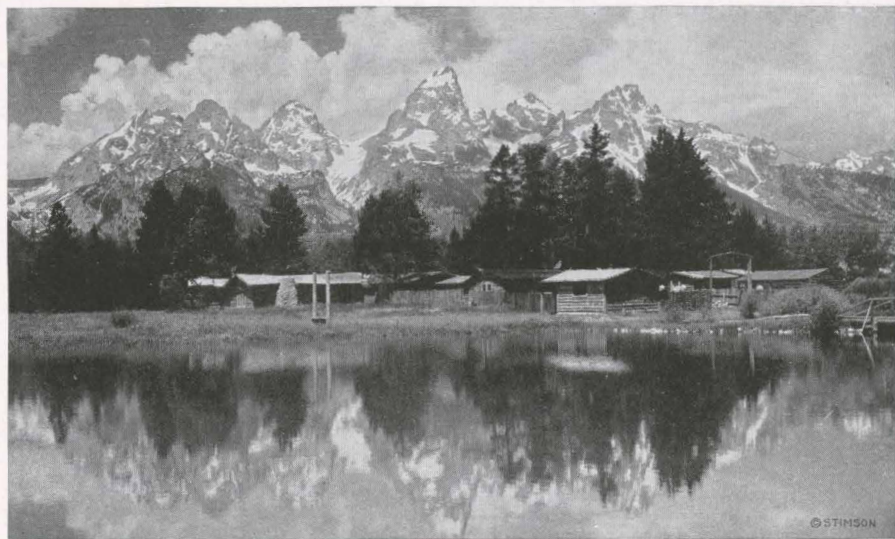


*"There is a Peace . . . man did not make . . . cannot mar."*

PHELPS LAKE, JACKSON HOLE, WYOMING







*The Magnificent Tetons from Bar BC Ranch, Jackson Hole, Wyoming*

## Jackson Hole Ranches

### BAR BC RANCH (Brand BC)

*Location:* Opposite Grand Teton, on bank of the Snake River, two miles from main Yellowstone Park motor road, 18 miles from Jackson and 45 miles from Victor, Idaho, the nearest railroad point.



*Accommodations:* Thirty-five rooms in comfortable log cabins accommodate 60 guests. Hot water and portable tubs supplied; large swimming pool; excellent sanitation. Ranch has its own garden, dairy, ice house and beef herd; fresh fruits and vegetables served.

*Activities:* Horseback riding is a basic sport. Pack trips arranged, with guide, cook and horse wranglers, also hunting parties in season, with guides who have been with the ranch since 1912. The charm of the Bar BC, one of the oldest and best known ranches in Jackson Hole, lies in its simplicity, and the fact that the management endeavors to secure a congenial group of people who want the casual and informal life which the ranch offers. All necessary comforts are provided, but luxuries are neither expected nor desired. Guests do "rough it" in comfort.

*Rates:* \$7 to \$10 per day, depending upon length of stay and accommodations required, and including exclusive use of saddle horse. Pack trips, \$6 per day additional per person for parties of four or more. Guests met at Victor and conveyed to ranch for a charge of \$10. References furnished and required. Write to the Bar BC Ranch, Moose P. O., Jackson Hole, Wyoming, for information about reservations; April 1st to June 1st, write to Irving P. Corse, Whitemarsh, Pa. Owners and Directors: Struthers Burt and Irving P. Corse.

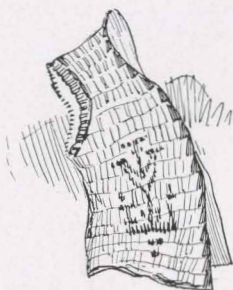






Photo by Crandall

*Dude Party Camping for the Night on Jackson Lake*



### CRESCENT LAZY H (Brand $\infty$ )

*Location:* Four miles south of Wilson, Wyoming, and 24 miles from Victor, Idaho, nearest Union Pacific point; bounded on the east by the Snake River, on the west by Teton National Forest. Superb view of the Grand Teton. Guests met at Victor, Idaho, or Rock Springs or Moran, Wyoming.

*Accommodations:* Large combination dining and recreation hall, electrically lighted, with modern kitchen; laundry, bath house with hot and cold showers. Substantial log cabins, tastefully furnished, accommodate 30 guests. All buildings on well-timbered land.

*Activities:* Horseback riding, hiking, hunting, mountain climbing. Excellent trout fishing on ranch property. Packhorse trips to Grand Canyon of the Snake River and other points of interest. Large and small game is plentiful. Big-game hunters accommodated in season (September 15th to November 15th). Rates on application. Summer season, June 15th to September 15th.

*Rates:* \$70 per week, \$250 a month; for two persons slightly lower. Children under 12 with parents \$35 per week. Exclusive use of horse and saddle included. Automobile transportation, personal laundry and pack trips extra. References given and required. Write to Edward G. Brown, Crescent Lazy H Ranch, Wilson, Wyoming. Telegrams to Wilson, via Victor, Idaho.

### DOUBLE DIAMOND RANCH (Brand $\otimes$ )



*Location:* Sixteen miles north of Jackson at the base of Grand Teton, between Cottonwood and Taggart Creeks. 75 acres. Borders portion of Grand Teton National Park.





*The Tetons from the Snake River at Historic Dead-Man's Bar*

*Accommodations:* Tent houses for 25 boys of preparatory school and college age, with cabins for eating and lounging. Ranch has its own fresh vegetables, milk and cream.

*Activities:* Life on a Western ranch, with long camping trips under supervision of experienced guides. Riding, fishing, swimming and occasional baseball games. Fifty selected saddle horses are maintained.

*Rate:* \$550 for the season, including transportation from New York, Philadelphia or Chicago, in the company of councillors who remain with the boys throughout the entire trip. A trip to Yellowstone can be arranged for an extra charge of \$50. References required and given. Reservations can be made through J. S. Clark, Jr., 1529 Walnut Street, Philadelphia, or Frank R. Williams, Proprietors, Double Diamond Ranch, Moose P. O., Teton County, Wyoming, or Dewitt Dominick, Yale Station New Haven, Connecticut.



### FLYING V RANCH (Brand V)

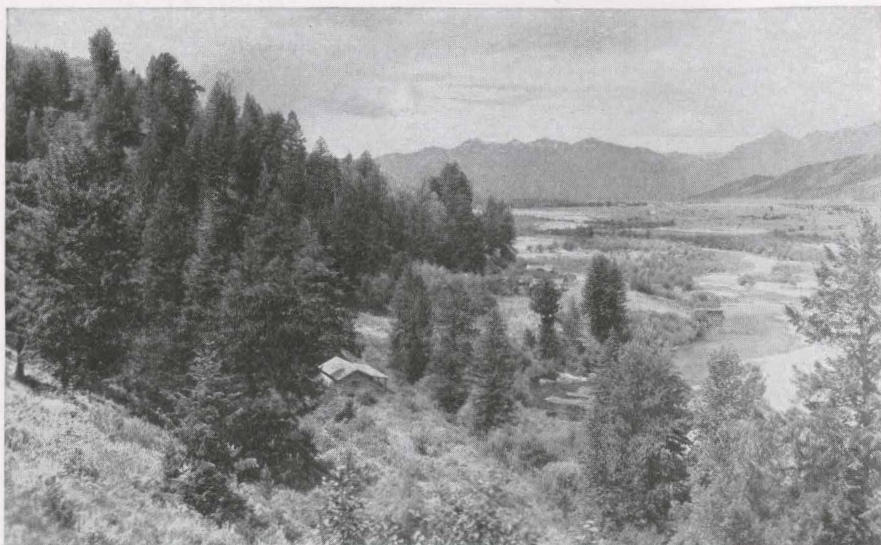
*Location:* Four miles northeast of Kelly, Wyoming, beside a mountain stream in the elk country, in full view of the Tetons. Reached via auto stage from Victor, Idaho, also from Rock Springs, Wyoming.

*Accommodations:* Main building is an attractive log ranch house, tastefully furnished. Heated cabins and floored tents for sleeping quarters. Flying V is a producing horse and cattle ranch, providing daily supply of milk, cream, eggs and vegetables.

*Activities:* Well-broken saddle horse assigned to each guest. Big-game hunters and winter guests accommodated by arrangement. The manager, John F. Woodman,







*Cabins and Swimming Pool, Gros Ventre Ranch*



#### **FLYING V RANCH (Continued)**

is a university man, bonded guide, and former U. S. Forest Ranger. Mrs. Woodman is a registered nurse.

Pack trips for boys into big-game preserves during July and August. Horseback trip through Yellowstone Park is featured in August.

*Rates:* \$50 per week for board, lodging and use of saddle horse. Write Flying V Ranch, Kelly, Wyoming.

#### **GROS VENTRE RANCH (Brand ♂)**

*Location:* South bank of Gros Ventre River, across the valley from the Grand Teton, affording one of the finest views obtainable of the entire range; 18 miles from Jackson, and 45 miles by auto road from Victor, Idaho, the nearest railroad station.



*Accommodations:* One, two, and three-room sleeping cabins, log construction, designed and furnished to give the utmost comfort to a maximum of 20 guests. Central two-room bath house with tubs and showers, hot and cold running water. Main sitting and dining rooms. Meals include fresh fruit and vegetables, milk, cream, beef, pork, and chickens raised on the ranch. Daily mail, telephone service, and general store at Kelly, Wyoming.

*Activities:* Swimming, in a pool supplied by natural springs; horseback riding; hiking; fishing; motoring, summer pack trips and hunting trips in season.

*Rate:* \$85 a week, including all essentials, laundry, exclusive use of saddle horse, and transportation to and from ranch and railhead. Address David Abercrombie, at Gros Ventre Ranch, Kelly, Wyoming, during the summer; in winter at 311 Broadway, New York City.





*Main Entrance STS Ranch*

### STS RANCH (Brand STS)

*Location:* In forest, on south fork of the beautiful Snake River, two miles by road and  $\frac{3}{4}$  mile by trail from Moose P. O., Wyoming. Most easily reached from Victor, Idaho; other routes are via Union Pacific to Rock Springs, Wyoming; and via West Yellowstone, Montana, through Yellowstone Park via auto stage to Moran. Ranch car can meet guests at Rock Springs or Moran.



*Accommodations:* The ranch consists of main cabin, containing living room, dining room, kitchen; a bath house with modern bathtub; a well equipped laundry. Individual one and two-room cabins accommodate 10 guests. This is the only small ranch left in this country. The ranch has its own garden, cows and chickens, thus supplying plenty of fresh vegetables, milk and eggs. It also has its own ice supply and spring water.

*Activities:* Horseback riding, beautiful trails into Jackson Hole, Grand Teton National Park, pack trips to Yellowstone may be arranged; good fishing in Snake River and nearby streams and lakes, swimming. Hunting according to seasons. The STS is open in winter. It has a dog-team; features skiing and winter sports.

*Rates:* \$55 per week per person. This includes the exclusive use of a saddle horse, fully furnished cabin, reasonable amount of personal laundry, in fact everything except trips in the ranch car. Special rates for those not wanting horses. The ranch will be glad to make special rates for fishing parties during June, September and October. References asked and given. Season June 1st to October 31st. For further information, write Buster Estes, STS Ranch, Moose P. O., Jackson Hole, Wyoming.







*Daily Bus Service between Victor, Idaho, and Moran, Wyoming*



## TETON LODGE

*Location:* Moran, Wyoming, gateway to Grand Teton National Park and 25 miles south of Yellowstone National Park. Reached by auto stage from Victor, Idaho, Rock Springs, Wyo., or via Yellowstone bus service from West Yellowstone, Mont.

Season June 10 to November 16.

*Accommodations:* Main lodge and separate cabins accommodate 300 persons. Running water, baths, electricity. De luxe cabins have sitting room, private shower and toilet. Housekeeping cabins. Fine meals in central dining and lunch rooms.

*Activities:* Horseback riding, photographing, fishing, boating, big-game hunting. Pack trips outfitted, also hunting parties, led by competent guides. Motor and rowboats for hire. Big-game season, September 15th to November 15th. Fishing and hunting licenses issued.

*Rates:* Meals and lodging, main lodge, \$4.00 a day, single; \$7.50 a day, double. Cabins, \$5 a day, single; \$9 a day, double. De luxe cabins, \$6.50 a day, single; \$11 a day, double. Housekeeping cabins (lodging only), \$1.25 a day, single; \$1.50 double.

Meals for transients, breakfast \$0.75, and lunch \$0.85, \$1 dinner.

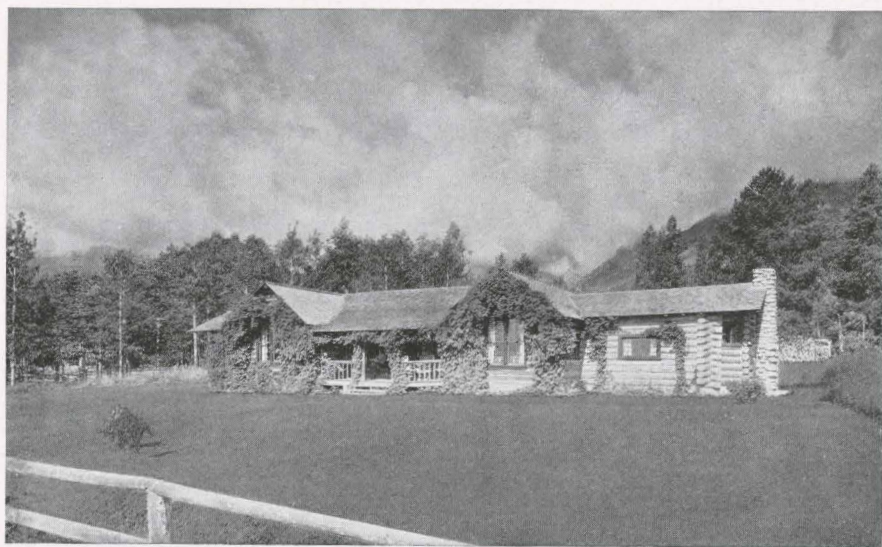
Saddle horses, \$2 a day; \$12 a week. Guests on lower weekly or monthly "American Plan" rates, will be permitted use of saddle horse without extra charge.

Rates furnished on application for pack trips or big-game hunting trips.

For full details or reservations, write Teton Lodge Co., Moran, Wyoming.







*White Grass Ranch*

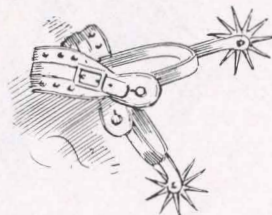
### TRIANGLE X RANCH

*Location:* Near the Snake River, directly east of the Grand Teton, 12 miles south of Moran, and 26 miles north of Jackson. Fine view of valley, the winding river and the majestic Tetons beyond.

*Accommodations:* Large rustic headquarters and six log cabins, accommodating about 20 guests. Shower and tub baths. Ranch has its own garden, dairy herd and poultry.

*Activities:* Ranch is near big-game country with its many beautiful wooded canyons, accessible for hikes, rides and short camping trips. Bear hunting in spring, elk, deer, moose and mountain sheep in fall. Good fishing in Snake River. Long trips into mountains, or through Yellowstone Park. Ranch literature gives information concerning winter sports.

*Rates:* \$42 a week, including exclusive use of saddle horse. Rates for special trips on application. Write J. S. Turner, Triangle X Ranch, Elk P.O., Jackson Hole, Wyo.



### WHITE GRASS RANCH (Brand H-B)

*Location:* Twenty miles from Jackson and 50 miles south of Yellowstone; contains 360 acres. Secluded from highway by a mile of pine forests, yet easily accessible. Altitude, 6,500 feet.

*Accommodations:* The log cabins, at the foot of the majestic Tetons, near Death Canyon, accommodate about 40 guests. Swimming pool; excellent table.

*Activities:* Riding, fishing, swimming, hunting and hiking. Each guest has his own saddle horse. Hunting







*"Snowbound" Teton in Jackson Hole, As Lovely As a Poem*



#### WHITE GRASS RANCH (Continued)

trips and summer pack trips arranged. A permanent hunting camp is maintained for big-game hunters, fully equipped to provide comfort and good hunting.

*Rates:* \$60 a week for a stay of a month or more. Transportation, Victor, to the ranch, \$10 a person. Personal references furnished and requested. Write to Harold R. Hammond, White Grass Ranch, Moose, Jackson Hole, Wyoming.

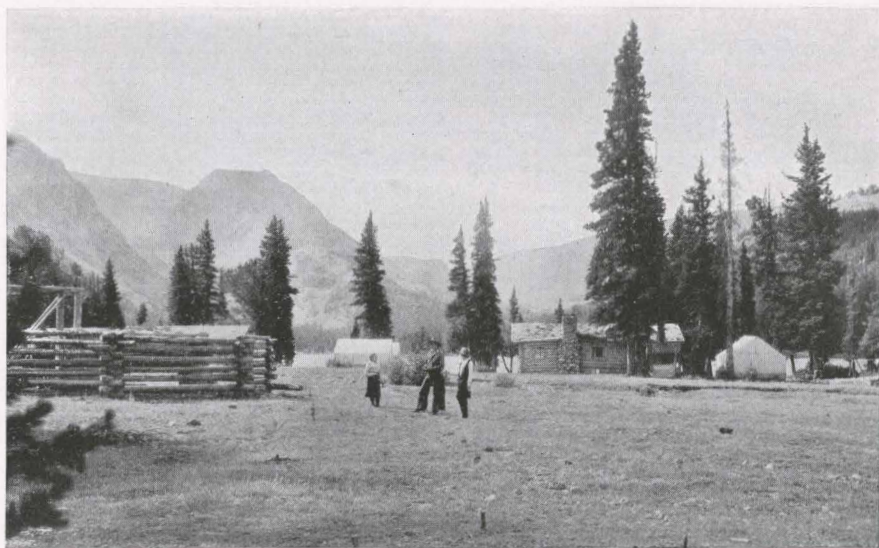
### Jackson Hole Winter Sports

The Jackson Hole Country, including Grand Teton National Park, is blessed by nature with all the things needed to make a winter sports playground . . . dependable snowfall, incomparable mountain scenery, natural skiing and toboggan slides, skating rink at Jackson for ice games, and western hospitality.

Each February the Jackson Hole Winter Sports Association, a member of the Western America Winter Sports Association, holds a Winter Sports Carnival and Dog Derby. The Jackson Hole ranches described in this book are all home ranches and will be glad to accommodate winter guests. The Teton, described by Struthers Burt as "the only mountains in America that look just like mountains should," are indeed majestic in their winter garb.

This beautiful and increasingly popular winter playground is reached only by the Union Pacific through Rock Springs, Wyoming, or Victor, Idaho. Guests will be met at Victor by heated sleighs for the thrilling ride to Jackson, Wyoming.





CM Ranch Camp at Simpson Lake

## Wind River—Green River Regions

### CM RANCH (Brand Ⓜ)

*Location:* On the J. K.'s Fork of the Big Wind River, 6 miles from Dubois, Wyoming; altitude, 7,000 feet. Across Continental Divide from Jackson Hole, and southeast of Yellowstone National Park. Five hours' ride by automobile from Rock Springs or Rawlins, Wyoming, on the Union Pacific System; guests met by appointment.



*Accommodations:* Comfortable log buildings. Modern kitchen and dining room, large central living room with fireplace; separate sleeping cabins of one, two or three rooms each. Central bath house with tubs, showers and abundant hot and cold water. Abundant, appetizing and well served meals; ranch has its own dairy herd, chickens, vegetable garden and ice house. Telephone and telegraph service, and daily mail.

*Activities:* Horseback riding, fishing, climbing, swimming, big-game hunting in season, and pack trips through the scenic surrounding country. Exceptionally fine trout fishing at the ranch and in near-by streams and lakes. Mountain camp at Simpson Lake, on the Continental Divide. Pack trips for groups of boys and groups of girls in connection. Ranch is open in the winter; fine opportunities for winter sports in the mountains. Ranch owner and manager, Mr. Moore, is a native of Wyoming, a licensed Yellowstone and Wyoming guide.

*Rates:* On application. Write to Charles C. Moore, CM Ranch, Dubois, Wyoming. From March 1st to May 15th, address Mr. Moore, c/o City Club, 55 West 44th Street, New York, N. Y. References exchanged.







*Cowboys of the DC Bar Ranch*

### **DC BAR RANCH (Brand )**

*Location:* 640 acres in the Upper Green River Valley, five miles from Kendall, Wyoming, and about 140 miles from Rock Springs, Wyoming. Buildings in an aspen grove, near a clear, cold mountain stream.

*Accommodations:* Ranch house, with living and dining rooms. Comfortable log cabins. Green vegetables, fresh milk and eggs.

*Activities:* Riding, mountain climbing in Wind River Range, fishing trips to lakes and streams in surrounding mountains. Bear, moose, elk and deer are plentiful. Fall hunting season opens September 15th. From July 2d to August 20th, the management conducts a girls' camp on the premises for 14 girls, 13 to 16 years old. They form a separate unit with their own sleeping quarters. Woman physician in attendance. Four weeks are spent in leisurely pack trip through the Jackson Hole country.

*Rates:* \$50 a week for one month or less, \$45 for over one month, covering all expenses on the ranch. Write Mr. or Mrs. John A. Dew, Kendall, Wyoming; winter address Daniel, Wyoming, or Eastern representative, Miss Jean Jellerson, 14 Washington Place, New York.

### **FLYING A RANCH (Brand )**

*Location:* On Little Twin Creek, at edge of National Forest Reserve, about 145 miles north from Rock Springs, Wyoming, 30 miles north of Daniel, and seven miles off the Yellowstone Highway.

*Accommodations:* Log cabins for two or four guests each, scattered along edge of pine timber and at a convenient





*Green River Lake from GP Bar Ranch*



*Dempsey Hunting Party GP Bar Ranch*

distance from large recreation and dining lodge. Bath house on the creek. Ranch has its own fresh milk and cold spring water. Fresh eggs, vegetables and meat.

*Activities:* Saddle horse assigned to each guest. Excellent trout fishing. Beautiful country for riding or hiking. Special pack trips to mountain lakes. Hunting.

*Rates:* \$55 a week for a stay of less than four weeks; \$50 a week for four weeks or more. This includes use of saddle horse. Write Mr. or Mrs. Frank Dew, Daniel, Wyoming, or to Eastern representative Miss Kathryn Kerlin, 5503 Germantown Ave., Philadelphia, Pa.



## GP BAR RANCH (Brand )

*(Formerly called Gannett Peak Ranch and Green River Lake Lodge)*

*Location:* Shore of Green River Lake, across from Old Square Top, in a wild and beautiful setting of mountain and lake, 154 miles by auto road from Rock Springs or Kemmerer, Wyoming. Guests met at either station.



*Accommodations:* Attractive main building and 15 commodious cabins; latest equipment; hot and cold water in connection with each; electric lights. Large dining room and lobby; hardwood floor for dancing.

*Activities:* Horseback riding, swimming, boating, fishing and hunting; summer camping parties and big-game hunting trips; also short pack trips to neighboring glaciers, highest peak in Wyoming, etc.

*Rates:* \$150 a month, including meals, accommodations and use of boats and saddle horse. Write to S. D. Decker, 1303 Continental Bank Bldg., Salt Lake City, Utah; from June 15 to Sept. 15 address ranch at Cora, Wyoming.





*Enchanted Mesa from Paradise Ranch*



#### **HF BAR AND PARADISE RANCHES (Brand $\Xi$ )**

*Location:* Five delightful motor hours from Rawlins, Wyoming, on the Union Pacific, over a perfect hard surface highway. The ranch nestles in the foothills of the east slope of the Big Horn Mountains.

*Accommodations:* Large, steam-heated ranch house, club house, and furnished log bungalows (living room, bedroom, sleeping porch, open fireplace, and private bathroom). Electric lights, cold storage plant. Splendid cuisine from acres of garden, fine poultry and dairy.

*Activities:* "The outside of a horse is good for the inside of man." Splendid horses, including many Thoroughbreds for the man able to handle them. Modern regulation size concrete swimming pool; hard surface tennis courts; polo field. The finest of fishing; both bird and big game.

*Rates:* For rates, booklet and detailed information write, wire or phone Frank O. Horton, Buffalo, Wyoming. References are required.

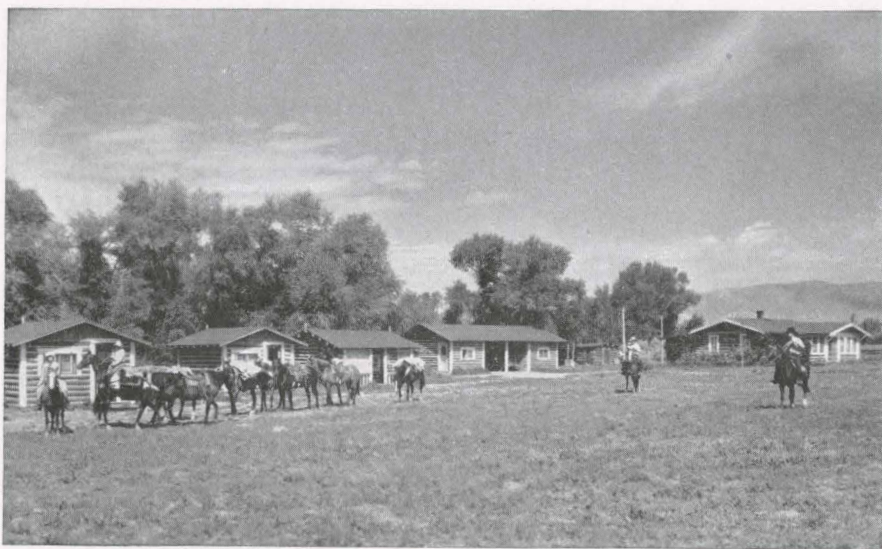


#### **TWO N RANCH (Brand $\mathfrak{N}$ )**

*Location:* Near Dubois, elevation 6,900 feet. Wind River passes between cabins and corrals. Buildings face multi-colored Bad Lands. 3,000-foot rise in elevation going back of ranch three miles. Guests coming via Union Pacific met at Rawlins, Wyoming.

*Accommodations:* Ten to twelve guests at ranch. Pack equipment for two or three parties in mountains at one time.

*Activities:* Hiking, riding, fishing at ranch with many interesting short trips. Summer pack trips into Wind



*Pack Outfit Leaving Two N Ranch*

River and Absaroka Ranges for fishing or sight-seeing, and to Gannett Peak glacial fields. Highest point in Wyoming and largest moving glaciers in United States. Spring bear hunting, and in fall elk, deer, moose, sheep.

*Rates:* Cabin, meals, and saddle horse at ranch \$35 per week each. Summer pack trips \$12.50 per day each in party of four or more. Hunting rates, booklet, or information by writing L. O. McMichael, Dubois, Wyoming.

### **T CROSS RANCH (Brand $\mp$ )**

*Location:* On Horse Creek, a tributary of the Wind River, 15 miles north of Dubois, Wyoming; in the Washakie National Forest, and in the heart of the Absaroka Mountains. Reached from Rawlins or Rock Springs on the Union Pacific by ranch car.



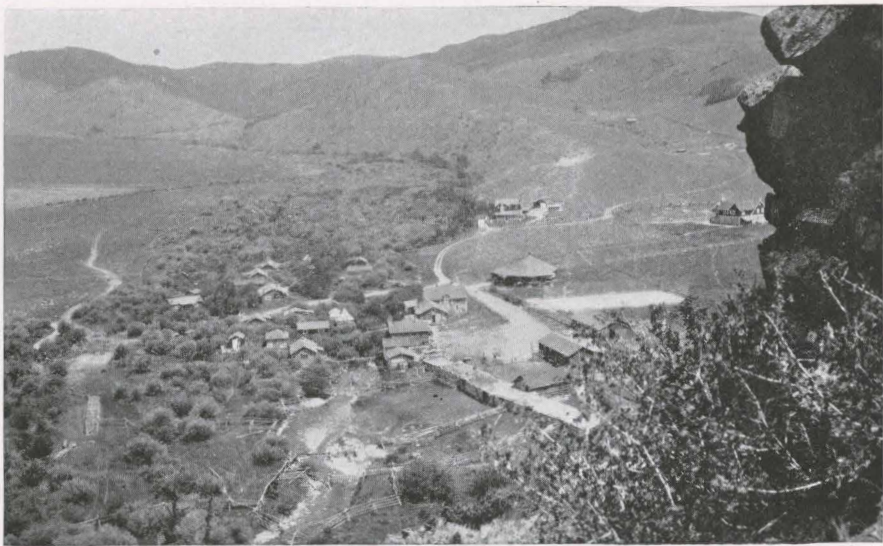
*Accommodations:* Main building with living and dining rooms and kitchen. Attractive and comfortably furnished cabins, each with private bath, for a limited number of guests. Meals are excellent, with plenty of fresh vegetables, milk, cream, etc. Telephone and telegraph service.

*Activities:* There is a wide variety of riding, either on the open range or over forested mountain trails. Trout fishing is very good on the stream through the ranch or in several nearby lakes and streams. Ranch is well equipped to handle pack trips and hunting parties.

*Rates:* Further information and rates, write to Robert S. Cox, T Cross Ranch, Dubois, Wyoming; or to Dr. W. E. Barnard, 475 Fifth Avenue, New York City. References furnished and requested.







*A Bar A Ranch from Lookout Point*

## Continental Divide and Snowy Range Ranches



### THE A BAR A RANCH (Brand 41)

*Location:* A secluded valley of the Medicine Bow Range, 80 miles west of Laramie, Wyoming, which is only 26 hours from Chicago, via Union Pacific. Address, Encampment, Wyoming.

*Accommodations:* Comfortable and tastefully furnished cabins, suitable for one to five occupants; electrically lighted, each with private bath, and accommodating 40 guests in all. Large rustic recreation room, containing ranch store and offices; also dining and reading rooms. Good food is a special feature.

*Activities:* Horseback riding, excellent trout fishing in the North Platte River, and in high mountain lakes, sage chicken shooting, tennis and swimming. Pack trips into the high Sierra Madre Range, with its snow-capped peaks, placid lakes, rushing mountain streams and flower-carpeted valleys. The life is extremely simple, free and informal, the climate delightful and the whole atmosphere one of clean, healthful activity. Season, June 15th to October 1st.

*Rates:* Rates will be quoted upon application. References required. Brochure on request. Write to A Bar A Ranch, Encampment, Wyoming.



### BAR ED RANCH (Brand 35)

*Location:* Four miles northeast of Buford, Wyoming, the second highest point on the Union Pacific System;



*Sheep Wagon Returning Home, Boyer YL Ranch*

altitude, 7,862 feet. Thirty miles via Lincoln Highway from Cheyenne, home of the Frontier Days Festival. Guests met by arrangement at Cheyenne or Buford, on the Union Pacific System. Rugged hills, slashed by deep wooded ravines and covered with huge glacial boulders, surround Bar ED, which is bounded on the west by the Pole Mountain Game Reserve, part of the 500,000-acre Medicine Bow National Forest, and adjoins a military reservation of 56,000 acres.

*Accommodations:* Double cabins and rooms in the two-story ranch house, which has bathroom and telephone service. Fresh vegetables, eggs, butter and milk.

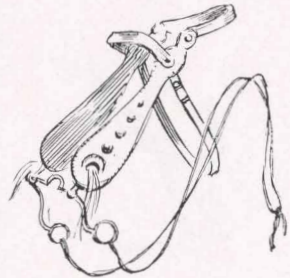
*Activities:* Splendid country for riding and hiking; the rolling, ever-changing prairie is within easy reach. Scenic one-day auto trips and motor trips to Cheyenne Frontier Days made without extra charge.

*Rates:* \$35 a week, including meals, lodging and saddle horse. Two-day motor trips to Rocky Mountain National Park or the Snowy Range, \$10 a person. Saddle horses for Frontier Days, \$10 extra. Ed P. Blanchard, Bar ED Ranch, Buford, Wyoming, is the proprietor.

### **BOYER YL RANCH (Brand YL)**

*Location:* Beautifully situated in the foothills of the Sierra Madre (Rocky) Mountains. Reached most directly via Union Pacific from Parco or Rawlins, Wyoming; or may be reached from Craig, Colorado, on the D. & S. L. Ry. Guests met with motor car.

*Accommodations:* Guests accommodated in the charming rustic ranch house, which has modern conveniences,







#### BOYER YL RANCH (Continued)

including electric light and baths, or in log cabins with private bath and fireplace. Tarpaulin-covered wagons kept for the few who enjoy sleeping in the open. Ranch gardens, dairy and stock herds, and fish and game in season, provide delicious meals.

*Activities:* The wild and picturesque surrounding country affords fine fishing and hunting. Excellent Western horses and thoroughbreds for pack trips, riding and polo. Gentle mounts for inexperienced riders. Guests wishing to hunt or fish should come fully equipped.

*Rates:* From \$35 to \$70 weekly, including full accommodations and use of saddle horse. Transportation from Parco or Rawlins to the ranch, \$12.50; from Craig, \$10. Owing to limited accommodations and necessity for congeniality, satisfactory references are required. For further information and reservations, write Mr. and Mrs. J. St. A. Boyer, Managers, Savery, Wyoming. Until June 1st, 1933 address care of Padlock Ranch, Thermopolis, Wyoming.



#### LU BAR RANCH (Brand LU)

*Location:* In the Laramie Mountains 31 miles from Wheatland; and about 100 miles (over a perfect highway) from Cheyenne on the Union Pacific. Guests met by appointment. Climate cool and dry; elevation "mile high."

*Accommodations:* The ranch house is large and modern with a big living room and sun porch. Sleeping quarters in ranch house or in comfortable, roomy cabins. This is a producing ranch offering unobtrusive, attentive service to those seeking happy associations with real western "folks."

*Activities:* Guests so desiring may have the unique experience of taking an active part in the spring roundup and branding. Each guest has his own horse and outfit at all times; horseback riding, pack trips to Laramie Peak; auto trips to "Frontier Days" and historic old Fort Laramie. Trout fishing is especially good. Big game hunting trips in the Jackson Hole or Medicine Bow Forest may be arranged in season.

*Rates:* Are reasonable and furnished on request. References exchanged. Reservations must be made in advance. J. A. Shaw, Manager, LU Bar Ranch, Dwyer, Wyoming.

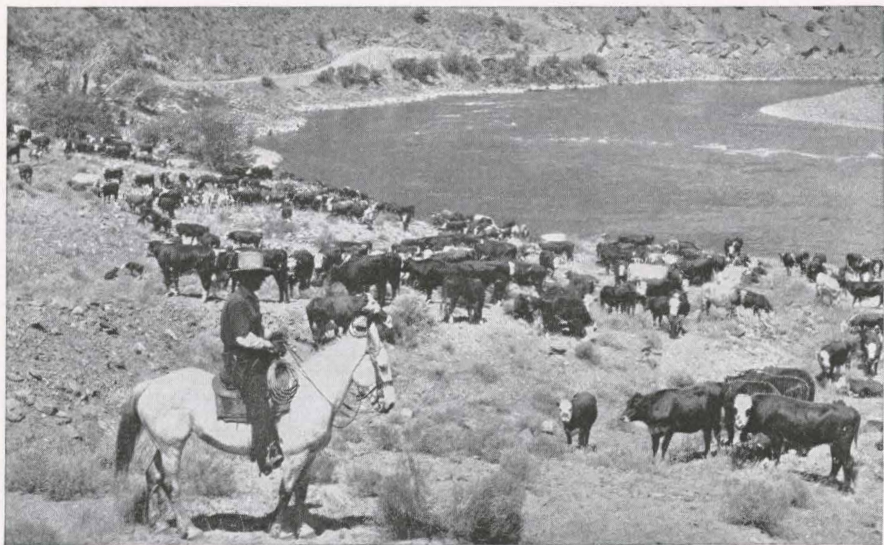


#### ONE-BAR-ELEVEN RANCH (Brand +)

*Location:* In a high mountain valley between the Medicine Bow and Sierra Madre ranges of the Rocky Mountains in Southern Wyoming. Two miles from the picturesque mountain town of Encampment. Boys detrain at Rawlins on the Union Pacific where our ranch cars meet them for the 65-mile drive to ranch.

*Accommodations:* A home cattle ranch in operation for many years. Except for the time spent on pack trips the





*Guests Learn to "Ride Range" with Cowboys*

boys are quartered at the ranch, in a roomy "bunk house" equipped with good single beds, electric lights, showers and bathroom. Meals are taken together in the ranch house. Wholesome fresh foods well-cooked and served. Ranch home is social center in evenings. Daily mail service; telephone and telegraph.

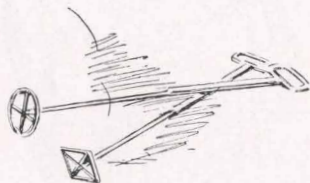
*Activities:* Each boy is given a good horse, hand-made Western stock saddle, etc. Rodeos at Saratoga and Encampment and Cheyenne "Frontier Days" may be visited under our supervision. Pack trips into the mountains and forest. Swimming in "old swimmin' holes" in clear mountain streams. Work on ranch becomes play to boys and they may enter into it. The status of each boy is that of a personal friend rather than that of a "paying guest."

*Rates:* Application for membership in the ranch family will be received after January 1st of each year. Acceptable references required, and in turn be given. Regular season July 1st to August 20th, incl. Write to Paul B. Holmes, Encampment, Wyoming.

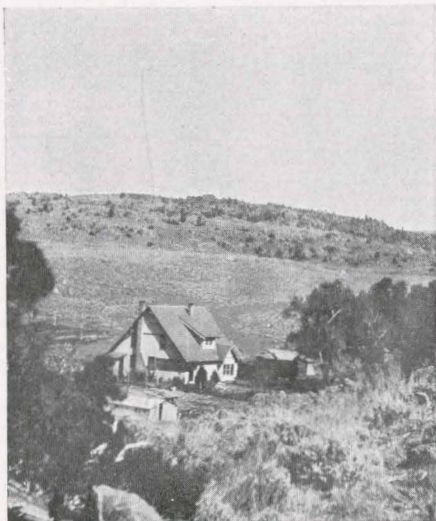
#### **OPEN B RANCH (Brand B)**

*Location:* This genuine Western ranch is 35 miles northeast of Medicine Bow, a Union Pacific main-line point, immortalized by Owen Wister in "The Virginian." All guests are met with cars. The ranch lies right in the mountains at an elevation of 7,350 feet.

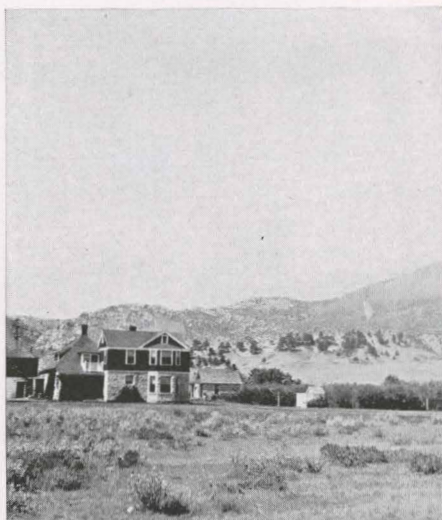
*Accommodations:* Choice of rooms in modern and comfortable ranch house, or in nicely furnished log cabins for a limited number of guests. All dine at the main building. Semi-weekly mail service.







*The Open B Ranch, Wyoming*



*The Y-Cross Ranch*

#### OPEN B RANCH (Continued)

*Activities:* The forested and open spaces surrounding the ranch are very attractive to the outdoor man or woman. Splendid trout stream on ranch grounds; fine saddle horses; guide service for hunting, fishing or sight-seeing parties, and equipment for extended pack trips. Interesting automobile trips at reasonable rates to Pathfinder Dam, Laramie Peak, Elk Mountain and across the Snowy Range, the latter a trip of 256 miles.

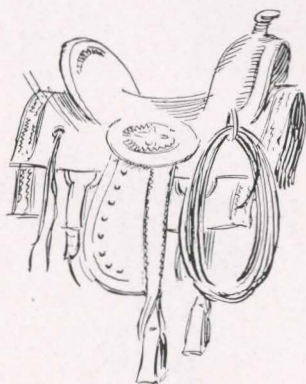
*Rate:* \$3.50 per day, \$24 per week, American plan; saddle horse hire, \$1.50 a day additional. For further information, write to Ira S. Bean, Marshall, Wyo.

#### SKY MEADOWS (Brand RH)

*Location:* In the beautiful mountains of southern Wyoming, in valley between Medicine Bow National Forest and Hayden National Forest. Reached via Union Pacific to Walcott, Wyoming, then 56 miles by auto; or via S. & E. V. R. R. from Walcott to Encampment, then by auto 13 miles.

*Accommodations:* Ranch home open to a few guests who would like a vacation on a real ranch, not a summer resort. All the comforts of home, rooms with bath, lights, long distance telephone, plus open fires, a charming log house. Ranch supplies fresh vegetables and dairy products. Expert cuisine.

*Activities:* Here one may see how a western ranch is operated; learn by experience what it means to "ride fence" and "ride the range;" learn the activities necessary to successful western ranching. Also the usual camping, hiking, fishing and hunting. Numerous auto





*Cheyenne Frontier Days (Last Week in July Each Year)*

trips of interest and always the liberty to do "just as you please."

*Rates:* Accommodations only upon reservation. If you want to come with a group of friends, we can accommodate ten, but will reserve the whole house for a party of six. \$5 each per day in groups of two or more; \$30 each, per week. Saddle horses \$15 per week. Address Mr. and Mrs. Reed Higby, Encampment, Wyoming.

### **Y-CROSS RANCH (Brand $\nabla$ )**

*Location:* Horse Creek, Wyoming, 35 miles northwest of Cheyenne. Union Pacific guests will be met by ranch car at Cheyenne.

*Accommodations:* Two-story ranch house, with hot and cold water, electric light, two bathrooms, comfortable sleeping rooms, fireplaces, living room and splendid ballroom. Accommodates between 10 and 25 guests. Y-Cross has its own dairy and garden and excellent spring water. Mail delivered daily. General store, post office and telegraph and telephone office within a mile.

*Activities:* There is a lake at the ranch door and fine fishing in nearby lakes and streams. Horses available for rides into the scenic surrounding country, or hunting, fishing and pack trips. Season, July 1st to October 1st.

*Rates:* For rates and reservations write J. C. Monday, Y-Cross Ranch, Horse Creek, Wyoming.







*Don't Be Left Behind This Year*



*One of the Joys of Rail Travel*

## Colorado Ranches

A dude ranch vacation in the Colorado Mountain Playgrounds will be enjoyed more if one uses The Columbine between Chicago and Denver. This beautiful train was named in honor of the Columbine, the state flower of Colorado. There is a luxurious club-observation car with radio and soda-fountain; valet, barber and bath.

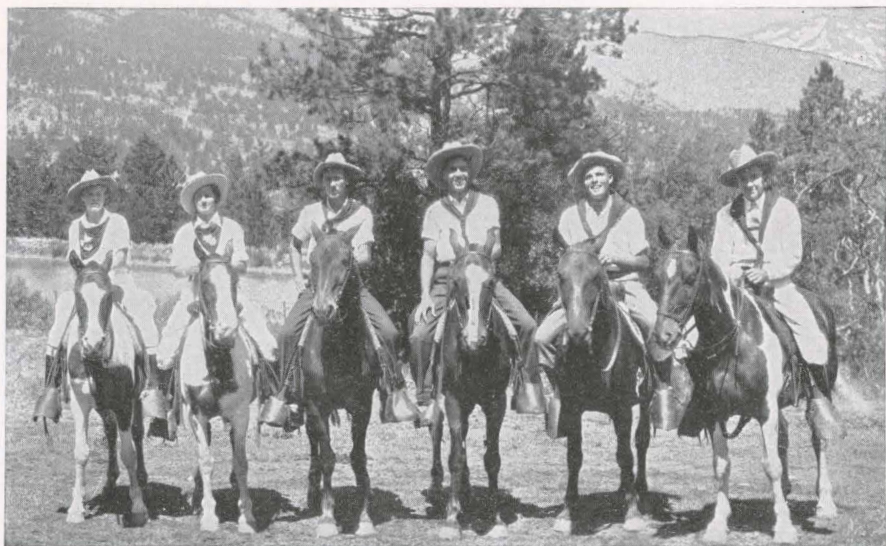
### LX BAR RANCHES (Brand LX)

*Location:* Ten miles north of Hayden, Colorado, on the Western slope of the Rockies. Hayden is on the Denver & Salt Lake Ry., 200 miles northwest of Denver. "Oak Point" Ranch looks toward the Little Flat Top Range and Mt. Arno; "The Quakers" is at the foot of Quaker Mountain, flanked by the Elkhead Range. Altitude, about 6,000 feet. Reached via D. & S. L. from Denver, Colorado, or via ranch auto from Laramie, Wyoming, on the Union Pacific System.

*Accommodations:* Ranch houses are homesteaders' cabins, transformed and enlarged, with screened porches, modern plumbing and good beds. Meals are varied, well cooked and appetizing, with fresh milk, cream, cottage cheese and butter from the ranch dairy herd, also fresh vegetables and fruit.

*Activities:* Horseback riding, fishing, pack trips, automobile excursions and local rodeos. Each guest is furnished with a saddle horse carefully selected for his needs and may participate in cattle branding and other activities. Every effort is made to have guests feel at home.





*Girls and Boys from Land O' Peaks Ranch*

*Rates:* \$45 a week at Oak Point; \$35 a week at The Quakers, where accommodations are simpler. Rates include horse and saddle, general guiding and short automobile and pack trips. Reservations through personal interview or direct correspondence preferred. Write to Mrs. J. C. Woodley, 616 Noyes Street, Evanston, Illinois, before June 15th; thereafter, at Hayden, Colorado.

## LAND O' PEAKS RANCH

*Location:* Home of Cheley Camps for Boys and Girls. Six miles south of Estes Park Village at the edge of Rocky Mountain National Park. Seventy miles from Denver; altitude 8,000 feet; cool, dry and invigorating climate.

*Accommodations:* Each of the six camps is built of stone and logs, commodious, comfortable and modern sanitation. Each camp has separate lodge, play fields, sleeping cabins, infirmary, baths and showers, craftshops, etc.

*Activities:* Supervised camp life insures every day filled with fun. Instruction in athletic games, campcraft, archery, forestry, horsemanship, Indian lore, etc. Accredited tutoring offered by staff of Randall School of Denver. Swimming, hiking, fishing, pack trips, and auto tours.

*Rates:* Boys and girls from 7 to 21 accepted, each Camp separate according to age. Single term, five weeks, \$225. There will be organized parties under escort from New York, Chicago, St. Louis, Kansas City, from Texas, Oklahoma and other sections. For complete information and catalog address F. H. Cheley, 601 Steele St., Denver, Colorado, until June 15th; thereafter, Estes Park, Colo.







*Phantom Valley Ranch, Colorado*

## PHANTOM VALLEY RANCH

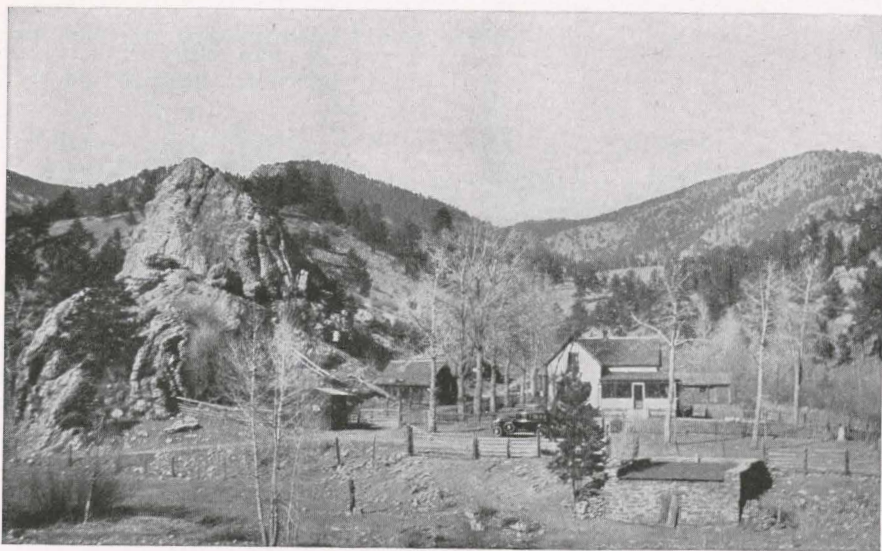
*Location:* Twenty-seven miles west of Estes Park, 12 miles north of Grand Lake, and  $\frac{1}{2}$  mile from Fall River Road. Bounded by Rocky Mountain National Park, Arapahoe Forest and Never-Summer Range. Reached via Rocky Mountain Parks Transportation Co. bus service from Denver, Longmont or Loveland, Colorado, or via D. & S. L. Ry. from Denver to Granby, Colorado.

*Accommodations:* Comfortable one, two and three-room cabins with bath. Main ranch house has lounging, recreation and dining rooms, with two large circular fireplaces. Good meals served at small tables or family style. Laundry service. All equipment required can be bought at ranch trading post.

*Activities:* Fine fishing in the Colorado River, running through the ranch, and in neighboring streams and lakes. Beautiful trails for riding and hiking; short horseback trips under guide supervision three times a week, without extra charge. Pack trips of any desired length arranged. Auto trips to Grand Lake, Granby and Cheyenne Frontier Days. Special hostess to supervise riding and play of children; no charge for this service except for individual riding lessons.

*Rates:* On application. Children 6 years old and under, half rates. Regular season, June 1st to October 1st; arrangements made for out-of-season guests. Reservations should be made in advance. References required. Write L. A. Scott, Phantom Valley Ranch, Grand Lake, Colorado. Winter address care of Rancho De Los Encinos, Sasabe Star Route, Tucson, Arizona.





*Ralston Creek Ranch*

### **RALSTON CREEK RANCH FOR BOYS (Brand )**

*Location:* This is a working horse and cattle ranch in the mountains 38 miles northwest of Denver. Altitude ranges from 7,500 to 8,900 feet. Ranch consists of 1,450 acres of mountain pasture, heavy timber, with  $5\frac{1}{2}$  miles of three mountain streams running through the property.

*Accommodations:* Buildings are main ranch house, log houses for dormitories and classrooms, stables and corals. Hot and cold running water, shower baths, comfortable beds, all conveniences are provided.

*Activities:* Ranch organized primarily as a tutoring school to provide expert instruction for boys who need to pass fall school or college entrance examinations. Boys who have no need of summer study are accepted. There is no emphasis on "roughing it." The primitive life, if desired, is found on trips away from the ranch. Each boy is provided with at least one horse, and, if he needs them, two. The instructors, Warren S. Holmes, Harvard, '24, Robert W. Shaw, Harvard, '20, and Stephen B. Strang, Director, Princeton, '23, are all men of wide and successful experience in preparing boys, both in classroom and individually, for college entrance examinations.

*Rates:* The school term runs for seven weeks, beginning about July 16th and ending about September 11th. Rates, which include transportation, are from \$485 to \$695, depending upon the amount of tutoring required. Boys from 12 to 20 are accepted. A few older persons may be taken by special arrangement. Write to: Ralston Creek Ranch, Golden, Colorado, or Eastern Address—New Hope, Pennsylvania.





## RUGH RANCH (Brand 8)

*Location:* East side of Cameron Pass, up the beautiful Poudre River Canyon, 43 miles west of Ft. Collins, Colorado. Altitude 7,500 feet. Reached via Union Pacific to Ft. Collins.

*Accommodations:* Cabins for guests and a central dining lodge with fireplace. Excellent meals with vegetables from ranch garden, plenty of milk and fresh eggs.

*Activities:* Scenic Poudre River affords good trout fishing; hunting in season, and saddle horses. Informality and cordial hospitality of the care-free life on this mountain cattle and horse ranch are featured.

*Rates:* Reasonable and furnished on application. Accommodations for a limited number of guests by reservation only. Write: R. B. Rugh & Company, Greeley, Colorado.



## SADDLE POCKET RANCH (Brand $\Delta$ )

*Location:* In Colorado and Wyoming in the valley of the Little Snake River; closely surrounded by mountains. Reached via Wamsutter, Wyoming (Union Pacific System), or via D. & S. L. Ry. from Denver to Steamboat Springs. Guests met at either station.

*Accommodations:* A real cattle ranch; operated by a member of the family that established it fifty years ago. It retains the friendly, informal atmosphere of the old West. Open to a limited number of guests, who are accommodated in an attractive ranch house and cabin, equipped with electric lights, running water and bath. Excellent food is a feature of the ranch.

*Activities:* Guests may join in the horse and cattle round-up and branding in July; also the beef round-up in August and other ranch activities. Long and short horseback trips, with wrangler and regular pack trips. The ranch is well located for pack trips, close to the beautiful Sawtooth, Sierra Madre and other ranges. Fishing in Battle Creek and the river. Fine Western horses and experienced guides.

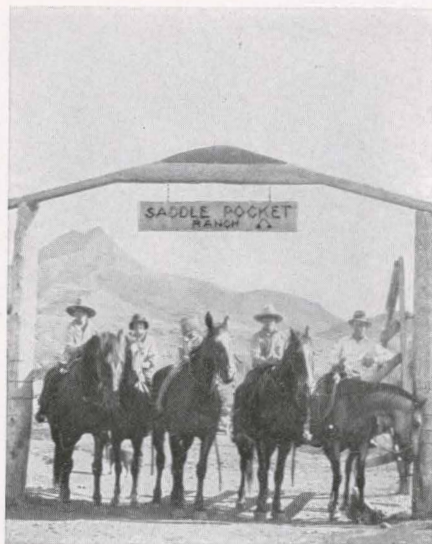
*Rates:* \$40 a week, including saddle horses. Inquire for pack trip rates, mentioning number in party. References required. Open all year. Write R. D. Salisbury, Saddle Pocket Ranch, Battle Creek P. O., Colorado.



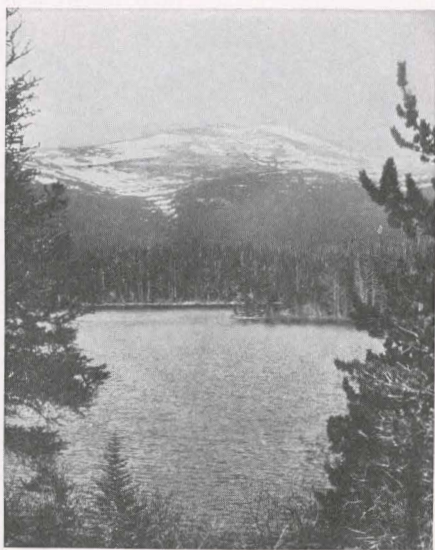
## S BAR L RANCH (Brand S-L)

*Location:* Stapp's Lakes, in Roosevelt National Forest and Boulder Glacier region, near timberline at foot of Mt. Audubon; 65 miles from Denver, 35 miles from Boulder, 28 miles from Estes Park, 8 miles from Ward.

*Accommodations:* Main Lodge with recreation and dining-room; separate cabins accommodate 50 guests. Shower and baths, electric lights, laundry service. Famous for excellent food.



*Everybody Rides at Saddle Pocket Ranch*



*Stapp's Lakes, S Bar L Ranch*

*Activities:* Fishing in four privately owned lakes; pack trips to Lindbergh Peak over Continental Divide via Buchanan Pass into Arapahoe National Forest, also horseback trips to the St. Vrain Glacier, Red Deer Lake, and many other beauty spots. Swimming, hiking and boating. All winter sports including skiing, tobogganing and skating from November to May.

*Rates:* American Plan only; \$3.50 per day each. \$15 to \$21 per week according to service and accommodation. Rates include boating, fishing and swimming privileges. Saddle horses, \$15 per week, \$3 per day. Inquire for pack trip rates, stating number in party. Open all year. For further information and booklet write Stapp Brothers, Stapp's Lakes, Ward, Colorado.



### **SLW HOME RANCH (Brand ♂)**

*Location:* 10 miles east of Greeley, Colorado, and 60 miles from Estes Park Village. Quickly and conveniently reached from the East; take the Union Pacific to Greeley.

*Accommodations:* The airy rooms of the large, two-story ranch house, which has running water and modern bathrooms, accommodate 15 guests. Wholesome, varied food; ranch has own vegetables, poultry, milk, butter and eggs.

*Activities:* This 9,000-acre ranch has been operated by the Witwer family for the past 30 years. It offers guests an opportunity to enter into or observe real cattle ranch life in a scenic country. Auto trips to Rocky Mountain National Park, Cheyenne Frontier Days, Denver, etc., at reasonable rates. Annual rodeo at Greeley, July 4th. This ranch features its horse-drawn vehicles; guests enjoy riding in the London four-in-hand tallyho coach, or



### SLW HOME RANCH (Continued)

driving the cabriolet or mail phaeton. Pony rigs for children. Unusually fine, home-bred saddle horses for use of guests. Small game hunting in season.

*Rates:* \$25 to \$35 a week depending on stay and number in party; private saddle horse or pony, at no extra cost. Ranch is open all year, and quotes special winter rates. Reservations should be made well in advance; references appreciated and exchanged. For full details and rates covering your specific wants, write to SLW Ranch, Greeley, Colorado.

### SMILLIE'S F SLASH RANCH (Brand F')

*Location:* Granby, Colorado, 100 miles west of Denver, and just southwest of Rocky Mountain National Park. Reached via Union Pacific to Denver, thence via D. & S. L. Ry. to Granby; also on route of Rocky Mountain Park Transportation Company's circle tour.

*Accommodations:* Attractive cabins and comfortable ranch house with bathroom and running hot water, accommodate 15 to 20 guests. Simple, appetizing fare; fresh vegetables and fruit, rich milk and cream.

*Activities:* A genuine stock ranch, with the true Western atmosphere; guests, if they so desire, may join in ranch activities and sports—wrangling horses, roping, etc. Trout fishing in Willow Creek, flowing past the ranch; also a cool swimming hole. Scenic rides into the mountains, and pack trips of several days' duration; high-grade saddle horses for the constant use of guests.

*Rates:* \$20 a week, or \$80 a month, including use of saddle horse. For further information, write to A. F. Smillie, Granby, Colorado.

### TOM TUCKER RANCH (Brand L)

*Location:* Twenty miles west of Boulder, near Nederland, Colorado. Boys met at Denver Union Station by ranch bus. This 1,000-acre ranch is located in rugged mountain country. The atmosphere is truly western.

*Accommodations:* Boys are housed in log and stone lodge, equipped with hot and cold running water, electric lights, shower baths, and a large recreation room. Separate log dining room and kitchen equipped with electric refrigeration. Ranch products such as fresh meats, vegetables, etc., grown on the ranch. Ranch has a resident doctor, infirmary, craftshop well equipped; daily mail.

*Activities:* Regular camp activities, including tennis, golf, athletics, swimming, riflery, trout fishing, and affords a taste of real life on a western cattle ranch. A saddle horse for each boy.

*Rates:* Boys 8 to 18; season June 28th to August 23rd, 8 full weeks. Tuition \$300 for full season. Special rates on application. Rates include transportation Denver to ranch and return. For catalog write Mr. C. O. Auger, 852 Madison St., Denver, Colorado, until June 15th; after June 15th, Tom Tucker Ranch, Nederland, Colorado.





*Tom Tucker Boys "Setting Up"*



*Frank Miller, Trail's End Ranch*

## TRAIL'S END RANCH FOR BOYS

*Location:* About 40 miles west of Ft. Collins, Colorado, in a beautiful canyon, on the North Cache la Poudre River, in the new Roosevelt National Forest of the Rocky Mountains. Guests will be met at Ft. Collins, Colorado and Laramie or Cheyenne, Wyoming.

*Accommodations:* Main lodge and recreation hall, dining room; new log cabins (no wooden shacks or tents); large outdoor swimming pool. Mountain water. Sanitation conditions of the highest standard. Real ranch meals from home-raised vegetables, meat, eggs, milk, etc. High and dry, and free from pests of any kind. Accommodations for adults in comfortable dude ranch style at reasonable rates.

*Activities:* Boys have an exceptional opportunity to study wild animal life and get a touch of western ranch life. Frank C. Miller, nature lover, artist, nationally-known exhibition crack shot, for many years with world-famous Wild West shows and rodeos has builded one of the largest private game refuges in the country with practically every type of wild animal life. Four miles of protected trout streams; horseback riding, hiking and pack trips; participation in ranch work; outdoor games; and instruction in expert rifle shooting. Wild West shows staged; trip to Cheyenne "Frontier Days" in late July at nominal cost. Everything to make ranch life appeal.

*Rates:* Boys from 7 to 17 years of age accepted. Full season rate, five weeks, \$100. Additional weeks, \$25 per week. For booklet and further information write Frank C. Miller, Trail's End, Ft. Collins, Colorado.



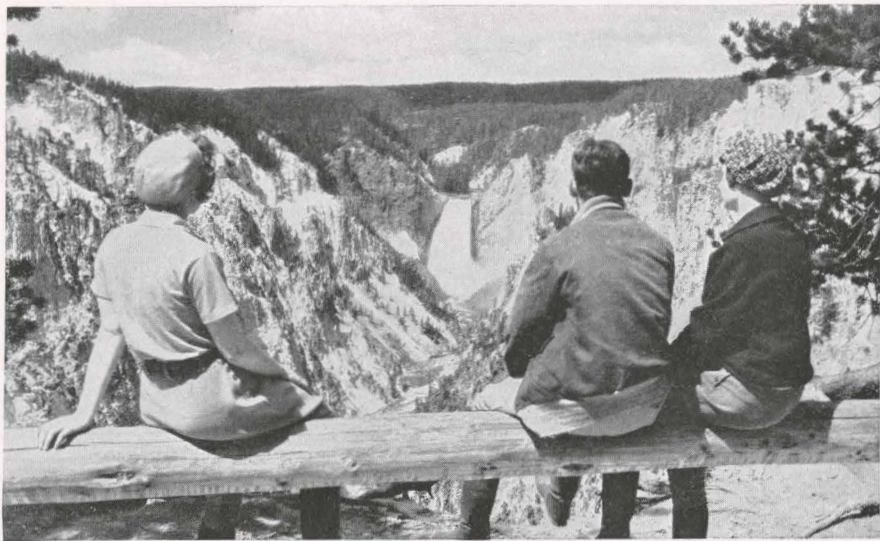




*A Popular Wyoming "Bull Moose" Party*

J. W. HOWELL, HOLM LODGE, "MASTER OF CEREMONIES"





*Picture Yourself at Artist Point, Viewing Yellowstone Falls*

## West Yellowstone—Shoshone Ranches, Wyoming

### HOLM LODGE (Brand ∞)

*On Crossed Sabres Ranch*

**Location:** Nine miles from eastern boundary of Yellowstone Park, in the Shoshone National Forest; about 90 miles from West Yellowstone, Mont., on the Union Pacific. Guests arriving via Union Pacific can combine a Yellowstone Park tour with a visit to Holm Lodge; Yellowstone Park bus can deliver guests to our ranch and pick them up for return trip through Park; or our ranch car will meet guests at West Yellowstone.

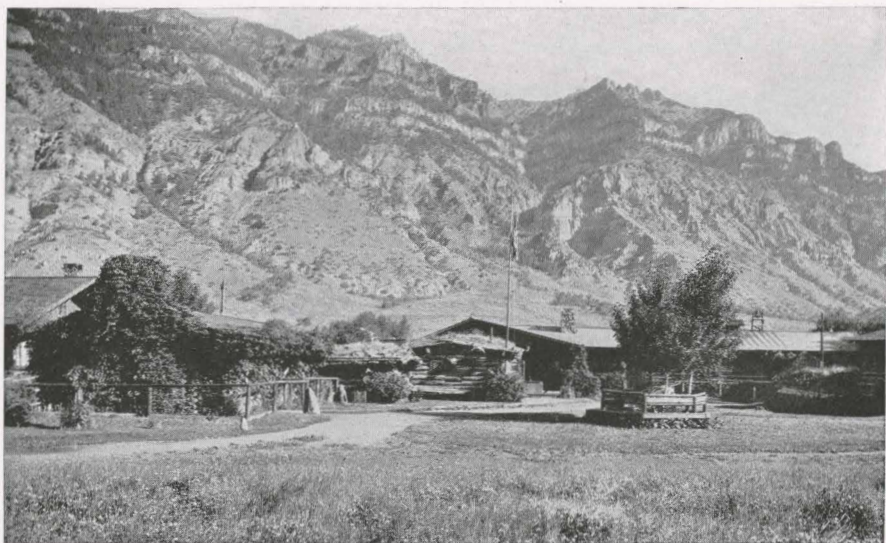
**Accommodations:** Centrally located main lodge with dining and recreation rooms, post office, telephone and telegraph. Sleeping quarters for 75 guests in separate cabins of one to three rooms; comfortable single beds with inner-spring mattresses. Conveniently located bath house with tub, or hot and cold showers. Maid service. Excellent meals with fresh foods.

**Activities:** Trout fishing, horseback riding, pack or camp trips. **Big Game Hunting** in season: bear in spring; fall hunting for bear, deer, sheep, antelope, moose, elk and game birds. Satisfaction guaranteed by 32 years of successful guide service with unsurpassed hunting outfit.

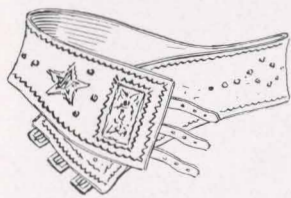
**Rates:** For 1933 are \$40 a week each—includes board, room, saddle horse, and guide service. Personal extras a part of our courteous service. Write the J. W. Howell Company, Cody, Wyoming, until June 1st; from June 1st to October address the Holm Lodge, Wyoming.







*Yard and Main Buildings, Valley Ranch*



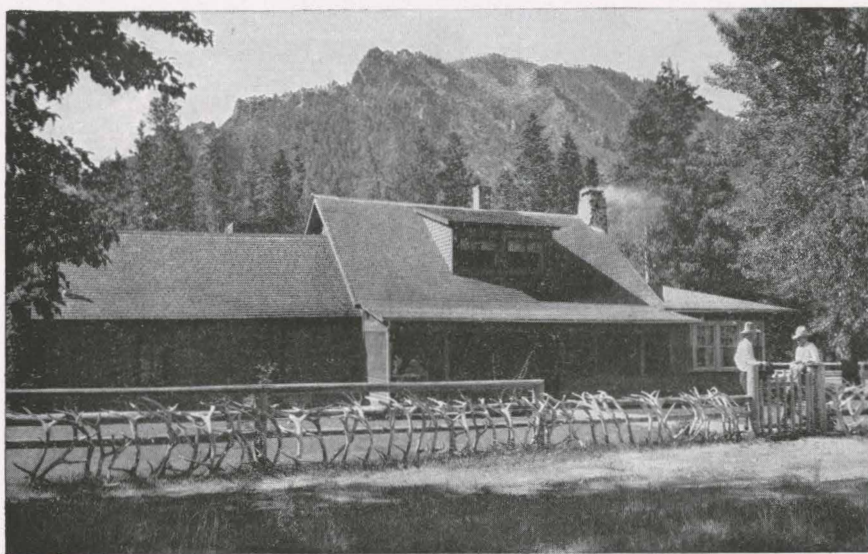
### THE VALLEY RANCH (Brand ☞)

*Location:* The Valley Ranch is one of the old, established outfits of Wyoming, located 43 miles out of Cody, Wyoming, on the South Fork of the Shoshone River, near the eastern boundary of Yellowstone Park. Guests from the East, West or California, will be met by special arrangement at the Union, Pacific's West Yellowstone station, and driven through Yellowstone Park and over the famous Cody Road to the ranch. Lincoln, Cadillac, Franklin, and Studebaker cars.

*Accommodations:* The main buildings of the ranch are of old-time log construction and are grouped together on the edge of the ranch meadows. The guest cabins, for from one to four persons, are located in a grove nearby, insuring shade and privacy. Big recreational cabin for evening amusements and old-time ranch dances. Half a dozen living rooms for reading, cards, pool tables, sociability, etc. Most attractive Ranch Trading Post in the West. A real ranch "table" plentifully supplied by fresh ranch products. Old clothes and a happy-go-lucky outdoor life. Remember—Valley is a *Ranch* and all that the word implies.

*Activities:* Three hundred saddle horses to choose from. Mountain trails, rolling range country, or the "floor" of the valley, to ride on. Pond in the ranch yard and beautiful pools in the river for swimming. Excellent fly fishing in the Shoshone River and tributary streams. Eastern brook and cut-throat trout. Three million acres of unspoiled wilderness area for summer pack trips and fall hunting parties. The famous Big Game district of Wyoming: moose, elk, antelope, deer, bear, and mountain sheep for your camera or rifle.





*Main Ranch House, Sunlight Ranch*

*Winter:* The Valley Ranch is open year around. Special rates in "off" season. **Valley Ranch Winter School for Boys** opens September 28th to June 1st. Twelfth year. Eastern curriculum in a western setting.

*Rates:* Please write. We have so many types of accommodations; tell us your requirements and we will meet them. Address I. H. "Larry" Larom, Valley Ranch, Wyoming.

### **SUNLIGHT RANCH (Brand $\nabla$ L)**

*Location:* Forty-five miles from Cody, Wyoming, and twenty miles from Yellowstone Park by pack trail. Away from automobile highways in the beautiful Sunlight Basin. Guests arriving via the Union Pacific System are met at West Yellowstone, Montana, with the ranch car, and Yellowstone Park may be visited en route to and from the ranch.

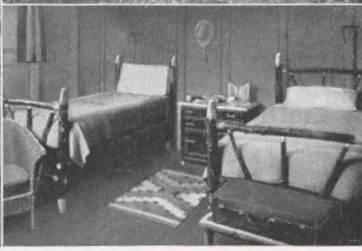
*Accommodations:* For forty recommended guests, in nicely furnished log cabins which nestle in the pines. Family cabins with private bath. Central bath houses with tubs and showers take care of the other cabins. Excellent meals with fresh vegetables, milk, butter, and eggs, which are produced on the ranch.

*Activities:* Fine horses. Excellent trout fishing. Dancing, swimming and canoeing. Very best pack train equipment for parties desiring to hunt or take moving pictures of big game and summer fishing trips.

*Rates:* For booklet and rates write to Simon Snyder, Cody, Wyoming.







*Rustic Cabin  
Dining Room*

*A Main Lodge Recreation Room*

ACCOMMODATIONS TYPICAL  
AMONG

DUDE RANCHES ALONG THE UNION PACIFIC

*Private Baths  
Exterior Main Lodge  
Comfortable Beds*



*Picturesque Main Lodge of Double Arrow Ranch*

## Montana Ranches

One may leave Salt Lake City, the hub of the vast inter-mountain scenic regions, in the evening and reach these fine ranches the next day through the Union Pacific gateways of West Yellowstone or Butte, Montana.



### CROSS QUARTER CIRCLE RANCH

*Location:* On Hebgen Lake on the Upper Madison River, adjacent to Yellowstone National Park; reached via Union Pacific to West Yellowstone, Montana.

*Accommodations:* For a limited number of guests. Log cabins with running water, good beds, comfortable lounge; excellent cook to cater to your every want.

*Activities:* Fishing, riding, boating, pack trips to mountain lakes. Trips can be taken in cars to all points of interest in Yellowstone Park. Big game hunting.

*Rates:* Furnished on request, which include, besides cabin and meals, a saddle horse, use of boats with guide. No extra charge for car trip to Yellowstone Park. Write Bill Martzel, West Yellowstone, Montana.



### DOUBLE ARROW RANCH (Brand ↔)

*Location:* 125 miles northwest from Butte and 56 miles northeast of Missoula, Montana, on the Clearwater River and Seeley Lake, between the Mission and Flathead Ranges. Guests are met at trains by ranch car; fare \$10 per person each way, from Missoula. Convenient train schedules between Missoula and Union Pacific terminal at Butte.







*Dudes May Learn the Art of Branding Calves*



#### DOUBLE ARROW RANCH (Continued)

*Accommodations:* For 30 guests in substantial log cabins with all modern conveniences and excellent beds; private baths. Ranch house with living room 50 by 30 feet. Excellent food.

*Activities:* Riding on picked horses. Fishing on our own and nearby mountain trout streams. Games on horseback, swimming and boating on Seeley Lake. Mr. and Mrs. Boissevain, Mr. and Mrs. den Tex, or our experienced guides accompany guests on trips. Pack trips and hunting parties into South Fork, a specialty.

*Rates:* On application. Address Double Arrow Ranch, Greenough, Montana.



#### E BAR L RANCH (Brand $\frac{1}{2}$ )

*Location:* Forty miles east of Missoula, Montana, in the Big Blackfoot Valley. Guests are met and taken to train at Missoula by ranch car. Convenient connections at Union Pacific terminal at Butte, for Missoula.

*Accommodations:* Forty guests are accommodated in log cabins of one, two and three rooms, each cabin containing bathroom with hot and cold running water. Meals are served in the main ranch house.

*Activities:* Horseback riding in a beautiful well watered mountain country, trout fishing in streams and lakes, swimming, pack trips of any length or duration, hunting in season, winter sports.

*Rates:* Rates and descriptive booklet will be furnished on request. Reservations should be made well in advance.

References exchanged. Address E Bar L Ranch, Greenough, Montana.

### ELKHORN RANCH (Brand R+)

*Location:* 35 miles from West Yellowstone, Montana, in a beautiful grassy pocket high in mountains. Guests are met and taken to train by ranch car.

*Accommodations:* Forty-five guests accommodated. Family cabins with private bath. Excellent food. This ranch is one of the best-equipped in Montana.

*Activities:* Delightful rides in varied mountain country. Observation of big game in natural haunts. Spirit that of family group. Mr. and Mrs. Miller, or experienced guide accompany guests on trips. Well-trained horses for all. Pack trips and hunting parties in season. Good fishing.

*Rates:* Special rates made for family groups, or guests staying five weeks or longer. Flat rate includes cabin with bath, meals, saddle horse and equipment, and general use of guide. Reservations should be made early. Personal references furnished and requested. For further information and rates write Ernest Miller, Elkhorn Ranch, Bozeman, Montana.

### FORSYTHE RANGE, INC.

*Location:* Situated at the foot of the Bridger Mountains, 17 miles by good road from the city of Bozeman, Montana, at an altitude of about 6,000 feet, **Forsythe Range** is in a very beautiful part of the high Rockies. Guests will be met by appointment at either West Yellowstone or Butte, Montana, on the Union Pacific.

Here, western and eastern ideas combine to make you comfortable. Well equipped cabins, good food and service are provided with typically western amusements and sports. With riding, hiking, fishing, mountain climbing and pack trips from the ranch; rodeos, fairs and dances near-by, there is plenty to entertain you. Or, if you prefer, you may have complete rest and quiet in the health-giving air and sunshine.

Especially we try to suit your own ideas for your vacation.

Separate log cabins, with or without baths, good food and suitable horses are provided for the very reasonable rate of \$40 a week up. Special rates are made for parties, families or extended stay.

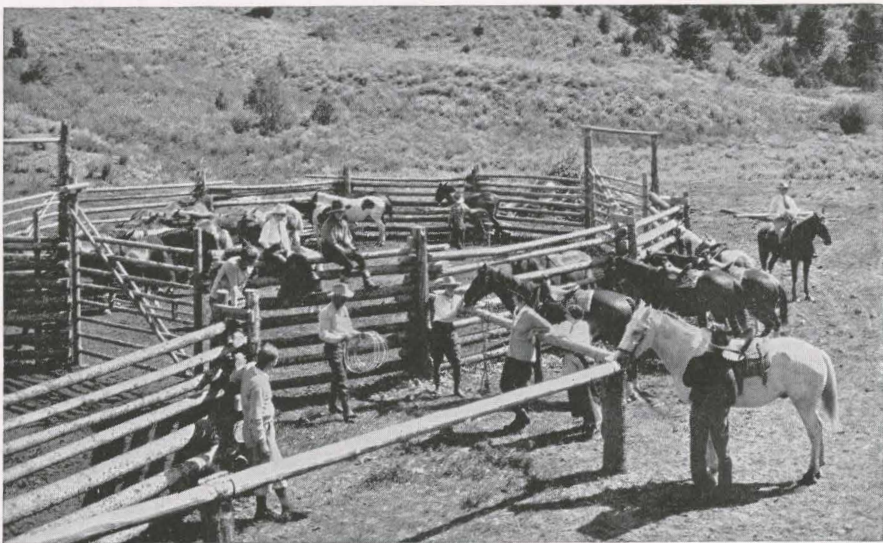
*Write:* Forsythe Range, Bozeman, Montana.

### H BAR 9 RANCH (Brand H-9)

*Location:* Horse Butte, 11 miles northwest of West Yellowstone and  $5\frac{1}{2}$  miles from the west boundary of Yellowstone National Park. Private cars will meet Union Pacific guests at West Yellowstone. Owned and operated by T. S. Grace, formerly owner of the now discontinued "Danny Ranch" in Jackson Hole. This is a stock ranch, in the horse and cattle (breeding) business, with accommodations for a limited number of guests.







*A Corral Is Often an Outdoor Club Room*

#### H BAR 9 RANCH (Continued)

*Accommodations:* Comfortable log cabins accommodate 20 guests. Ranch has its own garden, dairy, ice house and beef herd.

*Activities:* Horseback riding, pack trips, hunting in season, sight-seeing trips; boating, excellent stream and lake fishing.

*Rates:* Rates on application. Write to T. S. Grace, H Bar 9 Ranch, West Yellowstone, Montana.



#### LAIRD'S RECREATION LODGE (Brand & Diamond L Bar)

*Location:* "In the land chuck full o'hush," where there's a vast wilderness, forests, glaciers, snow-capped mountains, rushing streams and silvery mountain lakes. Ranch buildings location on Lake Lindbergh in the lovely Swan River valley, 85 miles from Missoula, Montana. Union Pacific service to and from Butte, Montana, with convenient connections between Butte and Missoula.

*Accommodations:* Large, rustic, two-story log lodge with spacious lobby, screened porches and sun room, attractively furnished and very comfortable. Excellent meals served in a central dining room which overlooks Swan River and the roar of the rapids gives one the sense of being surrounded by nature in its unspoiled beauty. There are no formalities—make this your mountain home that rings with true Western hospitality.

*Activities:* Swimming in crystal mountain water, canoeing, boating, horseback-riding, hiking, mountain





*Georgetown Lake, Montana, near Mt. Haggin Ranch*

climbing and fishing that is good. There are also summer camping trips and hunting parties in season. Open all year.

*Rates:* Reasonable—for further information write to "Cap" and Mrs. Eli Laird, Seeley Lake P. O., Montana, or Eastern Representative Mr. Charles F. Schattner, 6241 North Washtenaw Ave., Chicago, Ill.

### **MOUNT HAGGIN DUDE RANCH (Brand Y/P)**

*Location:* Near Georgetown Lake in Deer Lodge National Forest, about 50 miles west of Butte, Montana, on the Union Pacific. Guests met at Butte with ranch car.



*Accommodations:* Main lodge, with dance floor, lobby, dining room and kitchen. Sleeping cabins secluded from the main lodge to insure privacy and comfort. All buildings new, of sturdy and artistic peeled log construction, equipped with fireplaces and sleeping porches; electric lights, telephone. Central bath house; first-class sanitation. Accommodations for about 20 guests.

*Activities:* Horseback riding, polo, fishing, hunting, golf, mountain climbing (twelve of the highest peaks in Montana are within a few miles). Reminders of early Montana mining operations and Vigilante days. Winter sports, airplane trips, auto tours through Yellowstone and Glacier National Parks and to other points of interest; motor boating and fishing on Georgetown Lake. Special pack trips arranged on request.

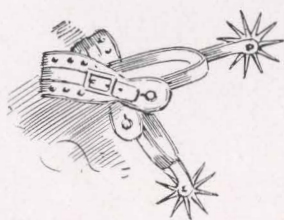
*Rates:* For rates, reservations, or other information, write to Dr. W. L. Beal, Manager, Anaconda, Montana.







*Nine Thousand Feet, Overlooking Ox Yoke Range*



## OX YOKE RANCH (Brand )

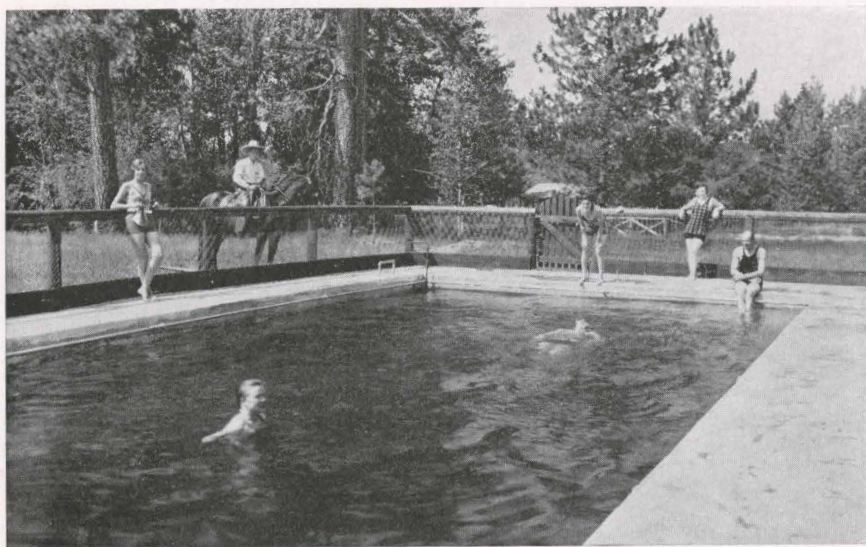
*Location:* Tucked away in the pine trees and guarded by rugged mountains, the Ox Yoke Ranch is located four miles up the scenic canyon of Big Creek, 30 miles south of Livingston, Montana, in the historic Indian country. Ranch is 58 miles from West Yellowstone, Montana, Union Pacific's gateway to Yellowstone Park, where guests will be met by appointment. There is no charge for transportation of guests or baggage to and from the ranch.



*Accommodations:* This is a real stock ranch raising beef and mutton; the Home Ranch being the first ranch settled in the Paradise Valley. Guests do not live in main recreation cabin, but private cabins are given to each individual or family. Every cabin is equipped with modern bathroom, electric lights, beds with Simmons mattresses, etc. Main recreation lodge for evening pleasures; fireplace, reading, bridge or dancing. Best of well-cooked meals served featuring fresh products from the ranch; Frigidaire for our fresh meats.

The comfort and enjoyment of each guest is the uppermost thought in the mind of Mrs. Charlie Murphy, who strives at all times to offer real Western hospitality and make each guest feel like one of the family.

*Activities:* Each guest is given a gentle, sure-footed, horse and western saddle, for horseback riding with some of the boys over picturesque mountain trails. Pack trips arranged at guests convenience. Guests are invited to help the cowboys round-up the cattle for the branding of calves; this is one of the most enjoyed summer operations.



*Swimming Pool on Seven Up Ranch*

Numerous lakes and streams provide good fishing. Big Game Hunting in season with experienced guides. The Livingston Round-Up in early July attracts all guests. Trips from ranch through Yellowstone Park will be arranged on request.

*Rates:* For 1933, \$50 per week, per person, and includes everything. For other information and application write Charlie Murphy, Ox Yoke Ranch, Emigrant, Montana.

### SEVEN UP RANCH (Brand 7UP)

*Location:* Fifty miles from Helena, Montana, in the Big Blackfoot Valley, five miles from the top of continental divide. Reached via Union Pacific to Butte, Montana, where guests will be met by ranch car (fare from Butte \$10 each way per person).

*Accommodations:* Comfortable log cabins for a limited number of guests. Central bath house also private baths. Beautifully equipped main cabin with lounge, pool room, dining room, glass sun porch and kitchen. Excellent meals and beds. Concrete swimming pool 20 by 40 feet.

*Activities:* Horseback riding, swimming, hiking, and fishing. Hunting in season. Pack trips into the South Fork of the Flathead wilderness area where excellent fishing is absolutely guaranteed. This is the largest uninhabited region in the United States.

*Rates:* Will be quoted on application and include everything the ranch has to offer with the exclusive use of a saddle horse. Reservations must be made in advance. References gladly exchanged. Address J. E. Bower, Seven Up Ranch, Lincoln, Montana.





## In Idaho

### BOYLE'S RANCH (Brand JB)

*Location:* Loon Creek, in northwestern Custer County, Idaho. It lies in a basin in the heart of the Salmon River Mountains, surrounded by peaks from 9,000 to 11,000 feet high. Elevation, 5,785 feet. Reached via good auto road from Hailey or Mackay, Idaho, both on the Union Pacific System; distance from either town, about 105 miles. Parties met by auto at either place.

*Accommodations:* Cabins, rooms and ranch accommodations, saddle horses, pack strings, packers and guides furnished by reservation.

*Activities:* The Salmon River Country is an unspoiled wilderness, scenic, rugged and well forested, offering unlimited recreational opportunities. Hot springs abound along Loon Creek, in some places within sight of perpetual snow. Loon Creek, the Middle Fork of Salmon River, and the numerous lakes in the vicinity furnish ideal trout and salmon fishing, while the Middle Fork Game Preserve, 12 miles north of the ranch, insures an abundant supply of big game in the surrounding territory.

*Rates:* For additional information and rates for short periods or summer vacations, including any or all of the above accommodations, write or wire Boyle's Ranch, Loon Creek, Stanley P. O., Idaho.

### FOUR S HEREFORD RANCH (Brand 4S)

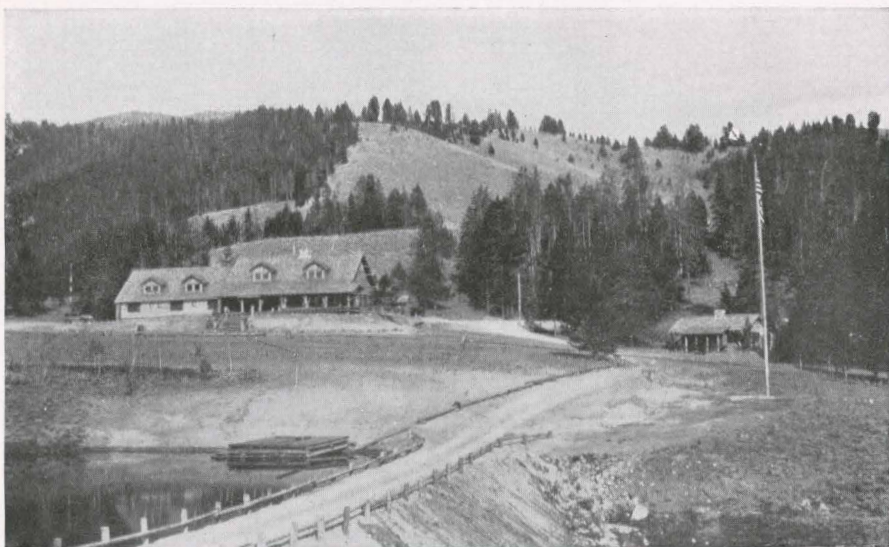
*Location:* In the southeastern corner of Idaho, 8 miles from Soda Springs. On Trail Creek, Slug Creek and the Blackfoot River, in the Aspen Range; adjoined by the Caribou National Forest on the south and east. The 3,500-acre ranch supports 250 pure-bred Herefords on its beautiful pastures. Elevation, 7,000 feet.

*Accommodations:* Rustic ten-room log house, surrounded by aspens and pines, contains a comfortable lounging room, with a large fireplace, and a main dining room. Floored tents for additional sleeping quarters. Hot and cold showers. Excellent cooking; ranch produces vegetables, milk, butter, eggs and meat. Finest of spring water.

*Activities:* Horseback riding, mountain climbing, fishing, swimming, and hunting in season. Pack trips, supervised by experienced guides, to such points of interest as Bear Lake, Sulphur Canyon and Caribou Mountain. Annual Henry Stampede and Stockmen's Reunion at Soda Springs, which ranks among the best rodeos in the west.

*Rates:* \$20 a week, including saddle horse and guide service. Two months' season for boys, including pack trips, \$200; \$50 extra for Yellowstone Park trip. Free transportation between ranch and Soda Springs. Special monthly and family rates. References exchanged. For further information, write to A. R. Strong, 4S Hereford Ranch, Soda Springs, Idaho. Eastern representative, Prof. A. Lee Mathews, Oberlin College, Oberlin, Ohio.





*Idaho Rocky Mountain Club*

## IDAHO ROCKY MOUNTAIN CLUB

*Location:* Slope of the Sawtooth Range, Idaho, 52 miles from nearest railroad station, and 118 miles from Shoshone, Idaho, on the Union Pacific main line. Elevation, 6,900 feet.



*Accommodations:* Spacious club-house with splendid view of the Sawtooth Range, commodious lobby, dining room, and individual guest rooms, each with private bath. Ten new and modern log cabins. Every room in cabins has fireplace, dressing room and bath. Private hydro-electric plant supplies power for lighting, cooking and refrigeration. Completely equipped concrete plunge provides sulphur baths from a natural hot spring. Artificial lake for swimming and boating. Excellent food; fresh fruits and vegetables; also milk, cream, and butter from club's Guernsey herd. All buildings newly erected, exclusively for club purposes. The club is open to public, but reservations should be made in advance, as accommodations are limited to 50 guests.

*Activities:* Each guest has exclusive use of a saddle horse. Hundreds of beautiful mountain trails. Eight varieties of trout; also Chinook and landlocked salmon. Deer, bear and mountain goat obtainable in season within a day's journey of the Club; mountain sheep and elk may be bagged by means of a 30-day pack trip to the Middle Fork of the Salmon River. Sage hen, duck and geese in season. Completely equipped camping trips arranged.

*Rates:* \$75 a week for one in a room, or \$125 for two. Monthly and family rates on application. For information write C. W. Gillespie, Manager, Stanley, Idaho, or Winston Paul, 580 Fifth Avenue, New York City.







*Robinson Bar Ranch, Idaho*

## ROBINSON BAR RANCH

*Location:* On U. S. Highway 93, at the junction of Warm Springs Creek and the Salmon River; in the heart of the densely wooded Salmon River Mountains. Guests arriving via Union Pacific met by appointment at either Ketchum or Mackay, Idaho—terminals of the railroad.

*Accommodations:* Rustic log hotel and cabins offer clean, comfortable accommodations. Excellent meals with plenty of fresh fruit and vegetables; trout and wild game in season. Home-raised chicken and beef; fine dairy herd. Private hydro-electric plant; electrically equipped laundry available for use of guests. Hospitable, homelike atmosphere.

*Activities:* A varied program of recreation and amusement. Fine, mountain-bred horses; five-hole golf course and tennis court; horseshoe pitching and croquet. Two large swimming pools, indoor and outdoor, supplied with constantly flowing natural mineral water. Pack trips and big-game hunting parties taken on advance reservation. Mountain goat, big-horn sheep, deer and bear inhabit the region.

*Rates:* \$25 a week, single; \$45 a week, double; children under ten, half price. Special rates on application for extended stays and large families. Rates include lodging, meals and use of all ranch facilities. Saddle horses, 50c an hour; \$2.50 a day. Reservations must be made at least two weeks in advance. Write to Robinson Bar Ranch, Clayton, Idaho, during summer months; to Chase A. Clark, Mackay, Idaho, during the winter. Telegraph address, Mackay, Idaho.



## Oregon Ranches

The Oregon Trail of covered wagon days is the Union Pacific Route of today. THE PORTLAND ROSE, "*A Triumph in Train Comfort*," provides the utmost in train comfort and service between Chicago and the Pacific Northwest. This is the famous train that was named for Portland, "City of Roses," and which was designed to convey to the nation an impression of the charm of the scenic Northwest. It carries chair car, through Pullmans, beautiful dining car, and a luxurious club observation car with barber, valet, bath; buffet soda-fountain and radio.

### DIAMOND-AND-A-HALF RANCH (Brand ⬠)

*Location:* Blue Mountain region on the old Oregon Trail, near Hereford, Oregon, which is 40 miles southwest of Baker, Oregon, a Union Pacific station. Guests met at Baker by appointment. Elevation 3,600 feet.

*Accommodations:* Large ranch building and adjacent cabins accommodate a limited number of guests from May to October. Bath house with hot and cold showers.

*Activities:* Mountains, forests, rivers, the open range, horseback riding, fishing and pack trailing are among the attractions. The property comprises 20,000 acres, much of it a scenic, semi-mountainous wilderness. Real cattle ranching is carried on, an interesting sight for many visitors. Races and cowboy stunts staged on a half-mile circle track; also large corral for local rodeos. Trips arranged to Pendleton Round-Up during August.

*Rates:* \$35 a week for one in a room, \$30 a week each for two, including cabin, meals and use of saddle horse, but not overnight pack trips. Special rates for families and parties staying four weeks or longer. For complete information, exchange of references, etc., address Diamond-and-a-Half Ranch, Hereford, Oregon.

### M J G RANCH

*Location:* Elevation 5,000 feet. At foot of Mt. Howard, at entrance of the "Primitive Area" of Wallowa National Forest, at Lake Wallowa. Six miles south of Joseph, Oregon, a terminus of the Union Pacific branch line, 84 miles from LaGrande, Oregon. Guests will be met at Joseph.

In the center of this "Primitive Area," 15 miles south, Eagle Cap rises to 10,000-

ft. elevation, at the head of Lake Basin. Snow-capped peaks feed 50 mountain lakes, and 300 miles of mountain streams which are all well stocked with trout affording the angler much successful fishing.

*Accommodations:* "The Chalet," a large log lodge, is the center of activities. Here is located a large ballroom with fireplace, a store, living room, kitchen and dining room. Telephone, telegraph, and daily mail service. Appetizing, wholesome meals are served family style. Fresh fruits and vegetables. Trout from nearby streams are often served. Ranch has own dairy. 15 frame cabins, electric lighted, three to six rooms provide sleeping quarters. Pure mountain water available for each cabin. Here one may enjoy rustic life comfortably and in a hospitable atmosphere.

*Activities:* University summer field courses in geology, geography, botany and zoology meet at M J G to study in the "Primitive Area."

Excellent fishing in numerous lakes and streams. Swimming, boating, horseback riding, dancing, etc. Bonfire entertainments. Snow sports in summer in high lake regions.

Pack trips to mountains, from two to ten days, at reasonable rates. Hunting trips, in season, with experienced guides a specialty. Wild game: bear, coyote, lynx, deer, elk and game birds.

Pendleton Round-Up, "Epic of the West," an annual event, is held each September at Pendleton, Oregon; only a few hours' drive from M J G.

*Rates:* \$35 per week includes cottage accommodations, meals at ranch dining room, and use of saddle horse. Saddle horses, \$3 per day. Guide service free with parties over five. Special rates made to season guests, and to educational groups. Write to J. A. Hopkins, Manager, M J G Ranch, Wallowa Lake, Joseph, Oregon.







*Picturesque Mojave Desert, North Verde Ranch*

## California Ranches

### GLENN RANCH

*Location:* Large fruit and stock ranch resort in the beautiful Sierra Madre Mountains, 20 miles from San Bernardino, Calif., the nearest station on the Union Pacific main line. Los Angeles only 2 hours away.

*Accommodations:* Spanish tile buildings, with or without private baths. Electric lights. Rustic cafe. European and American plan. Housekeeping cabins on the banks of Lytle Creek at very reasonable prices. Swimming pool and completely stocked store. Ranch has its own dairy herd, vegetables and fruit.

*Activities:* The host and hostess organize parties for hiking and riding to the many beauty spots in the vicinity. Dancing, tennis, swimming. Golf course at San Bernardino.

*Rates:* American plan, \$4 and \$5 per day. Housekeeping cabins, \$10 to \$25 a week. Round-trip stage fare from San Bernardino, \$2. Season, May to November. Write Seymour Tally, Glenn Ranch, California.



### NORTH VERDE RANCH

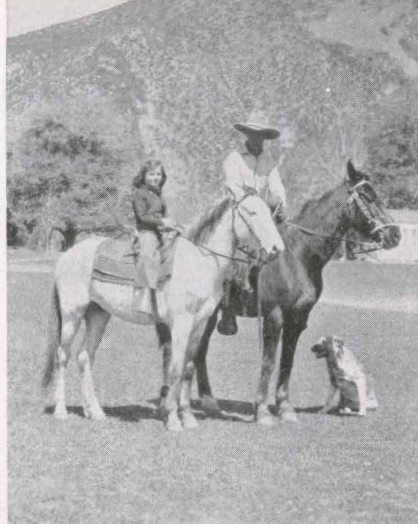
*Location:* One mile from Victorville, San Bernardino County, on the Mojave River. Reached by rail by way of Union Pacific System to Victorville. One hundred miles from Los Angeles. Forty-two miles from San Bernardino by stage or motor over Arrowhead Trail to Victorville.

*Accommodations:* Comfortable adobe ranch house.

Rooms with bath. Hot and cold water. Electric lights. Heat in each room. Good wholesome ranch food. Ranch has its own dairy, poultry and vegetables. One hundred foot swimming pool. Also furnished cottages for rent.

*Activities:* Horseback riding, hiking, duck hunting and other small game in season. Good library. Dancing; swimming; beautiful flowers.

*Rates:* Per week room and board single \$30; double per person \$25; per month, four weeks, room and board \$100 single or double per person. No extra charge for use of riding horses two hours daily. Fishing, swimming and boating free. Only a limited number of guests will be accepted. For further information or reservations address North Verde Ranch, City Office, 1112 Chapman Building, Los Angeles, or direct to North Verde Ranch, Victorville, California.



*Ready for a Ride, Glenn Ranch (Above)*

*George Weston Pierson (Below)*

## PIERSON DUDE RANCH (Brand B)

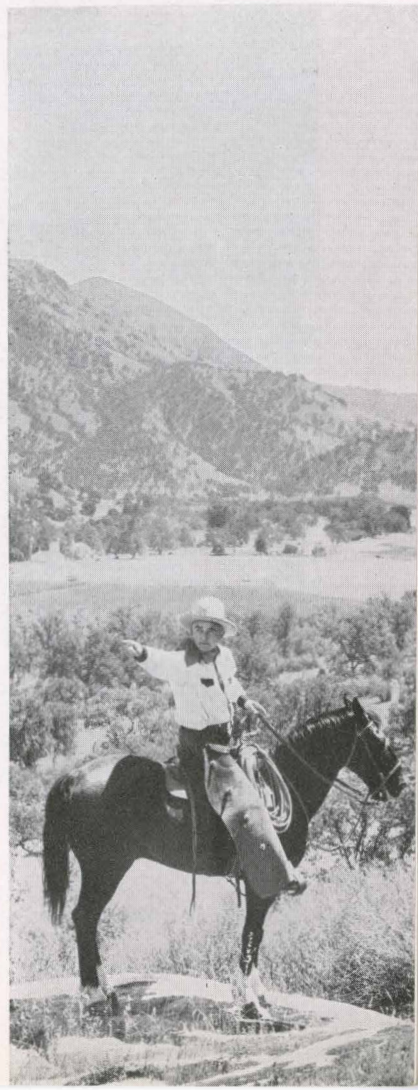
*California's pioneer dude ranch*

*Location:* Wonder Valley, west slope of the Sierra Nevada Mountains, just west of General Grant National Park and Sequoia National Park (Big Trees), near the Kings River Canyon on Arroya del Molino (Creek of the Mill) at the base of the famous Dalton (bandit) mountain in the Digger Indian country. A cattle and horse ranch of fifty years' standing. Nearest railroad point is Fresno, Calif., 35 miles from ranch.

*Accommodations:* In the big ranch house, which has all modern conveniences, rooms with or without private bath; also rustic cabins with stone fireplaces, private tub or shower baths, hot and cold water, etc. Perfect sanitation. Natural swimming pool in the Kings River. Our own dairy herd of Guernsey cows supplies fresh milk, cream and butter. Vegetable garden; poultry; fresh fruit in season served at our table. Meals served country style, first-class cook.

*Activities:* Horseback riding is our principal activity; swimming, canoeing, trout fishing, hunting in season, archery, mountain climbing. If desired, guests can participate in all our regular western ranch activities. Over-night pack trips, and day horseback picnic trips; longer pack trips with guide, cook and horse wrangler can be arranged.

*Rates:* American plan, \$37 single, \$68 double per week without private bath; \$47 single, \$89 double per week with private bath; including meals and the exclusive use of a saddle horse. Low monthly rates for boys on request. Guests met at Fresno and conveyed to ranch and return for a charge of \$5. Open all year. Pierson Dude Ranch, Del Piedra, California.







*A "Fair Catch" in Old Wyoming*

THE UNION PACIFIC SERVES MORE OF THE ROMANTIC WEST

## Camps—Guides—Lodges—Resorts

**T**HE following group of outfits are classified under this head to distinguish them from the regular dude ranches which are home operating stock or grain ranches with accommodations for guests on advance reservations. In this group will be found cabin camps, experienced and bonded guides, excellent mountain lodges, and rustic resorts. They are qualified by experience and equipment to provide western recreations such as camping and pack trips, hunting parties under guide, fishing, horseback riding, and similar outdoor activities. These outfits are well recommended by their former guests.

### ALTURAS LAKE RESORT

*Location:* Beautiful Alturas Lake in the upper Stanley Basin (Sawtooth National Forest), at the foot of the Sawtooth Mountains. Elevation, 7,000 feet. 57 miles from Hailey, Idaho, and 45 miles from Ketchum, Idaho. Guests met at either Union Pacific station.

*Accommodations:* Rooms in main lodge, or in separate log cabins. Good, home-cooked meals served in family style.

*Activities:* Boating, swimming and horseback expeditions. Special two-week pack trips to Middle Fork of Salmon River, a wild and remote region offering unsurpassed trout fishing.

*Rates:* \$4 a day American plan. For detailed rates and reservations write H. W. Bradford, Hailey, Idaho.

### BIG SPRINGS INN

*Location:* Near Big Springs, Idaho, on the Yellowstone Park branch of the Union Pacific. Because of its nearness to West Yellowstone, the Inn is an ideal place to visit in connection with a Yellowstone Park tour.

*Accommodations:* Rustic log hotel and sleeping cabins. Hotel and dining-room service and light-housekeeping cabins. Telephone and telegraph.

*Activities:* A fishing, outing and hunting haunt, open June 1st to September 1st. Large and small game in season. Many points of scenic and historic interest are close by.

*Rates:* For rates and reservations, write to Big Springs Inn, Guild P. O., Idaho.

### BOWER'S RANCH

*Location:* Eighteen miles from West Yellowstone, Union Pacific entrance to Yellowstone National Park, on the shores of Henry's Lake, Idaho. Guests met at West Yellowstone, Montana, by arrangement.

*Accommodations:* Comfortable cabin accommodations and excellent meals for 40 people; electric lights, tub baths, and telephone service. Hunting and fishing parties outfitted with full equipment on advance notice.

*Rates:* \$3.50 a day, \$20 a week. Write William Bowers, Lake P. O., Idaho.

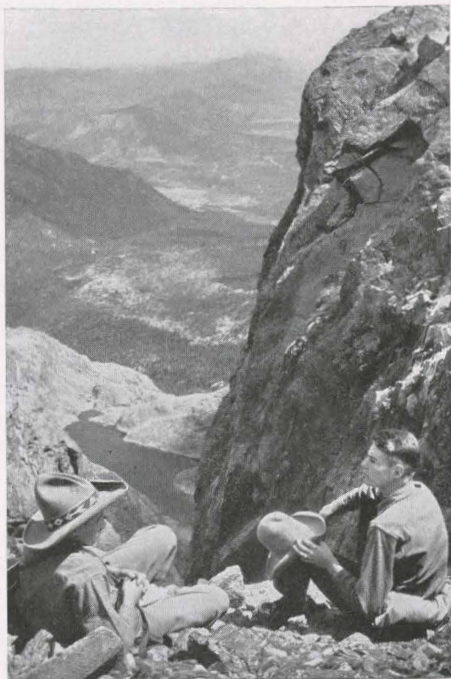
### BROOKLYN LODGE

*Location:* Near timberline in the Snowy Range. Eight miles from Centennial and 40 miles from Laramie, Wyoming. Reached via auto stage of L. N. P. & W. R. R. to Centennial, from Laramie, where Mr. Jones will meet you with a car; the same "Hoor" Jones who used to ride at Cheyenne "Frontier Days."

*Accommodations:* Twenty log cabins, commanding a view of grassy, pine-encircled slopes; some have two or three rooms; all electric lighted and equipped with stoves and comfortable beds. Bath houses with hot and cold showers. Large central hall where guests may dine and dance; living room with cheerful fireplace.

*Activities:* The Great Medicine Bow National Forest, intersected by marked Forest Service trails, surrounds the lodge. A hundred lakes and as many trout streams make the Snowy Range





*What Boy Wouldn't Like This Life!*

#### **BROOKLYN LODGE (Continued)**

country a fisherman's paradise. Guides and saddle horses at reasonable rates.

*Rates:* \$21 a week, or \$3 a day, including cabin and board. Children under 10, half rates; under 4, no charge. Write to H. D. Jones, Brooklyn Lodge, Centennial, Wyoming.

#### **CAMP CHIEF OURAY**

*Conducted by the Boys' Division of the  
Denver Y. M. C. A.*

*Opens 26th season on June 17.*

*Location:* On a beautiful spot at the edge of the forest on the Colorado River, four miles from Granby, near the Circle Road from Denver to Estes Park. Altitude is 8,000 feet. Take Union Pacific to Denver where boys will be met by Camp bus.

*Accommodations:* Main Lodge in which is located dining room, fireplace, kitchen with refrigeration and all modern conveniences; also store, bank and director's office. Second floor has accommodations for 30 guests. Each cabin accommodates seven or eight boys and leader; individual spring bunks and mattresses, dry, clean and sanitary. A

well equipped hospital. Hot and cold showers. Pure mountain drinking water. Telephone, telegraph, daily mail.

*Activities:* All the activities and life of a first rate boys' camp. Nature Study Museum, library, athletic field, tennis courts, archery and rifle range, swimming, boating, hiking, horseback riding. Camp workshop and arts and crafts building.

*Rates:* For illustrated brochure giving complete information, rates, and application, address Leslie S. Deal, Camp Director, % Y. M. C. A., Denver, Colorado.

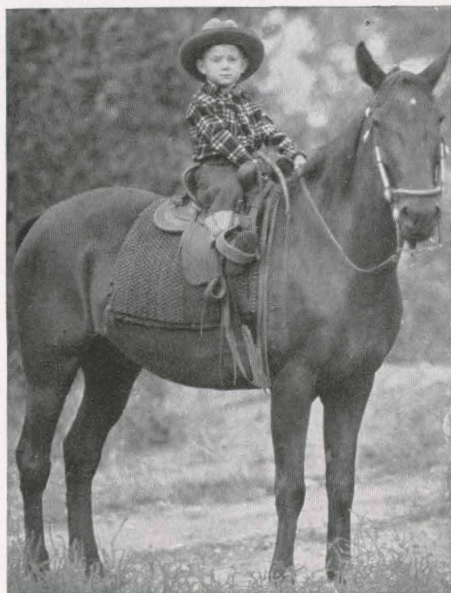
#### **CASTLE ROCK RANCH**

*Location:* 40 miles from Victor, Idaho, 14 from Jackson, Wyoming, on Horse Creek, near the Snake River. Elevation 6,000 feet.

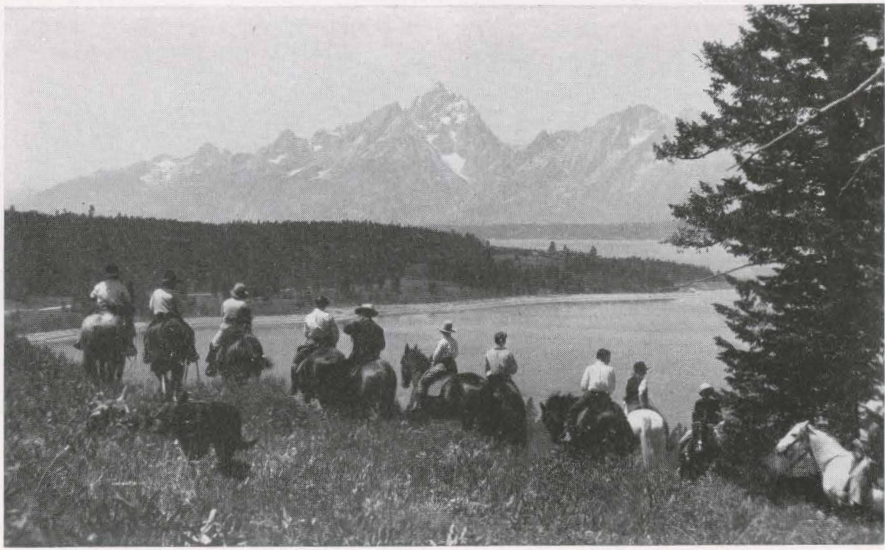
*Accommodations:* Large cabins accommodating 20 guests. Baths.

*Activities:* Outings, fishing trips along the Hoback and Snake Rivers, and on Jackson and Jenny Lakes; pack trips and personally conducted hunting trips. Open all year.

*Rates:* \$30 a week, including meals and cabin. Write to Clark Brody, Jackson, Wyoming.




*They Start 'em Young Out West*



*Dudes from Diamond Double L Outfit, Trail Riding, Grand Teton National Park*

## DIAMOND DOUBLE L OUTFIT

(Brand )

*Note: A "dude outfit" having the saddle and pack horse concession in Grand Teton National Park.*

**Location:** Shore of Jenny Lake, Grand Teton National Park; at the foot of the Grand Teton peaks. Victor, Idaho, is the nearest railroad station. Bus service from Victor direct to our office.

**Equipment and Activities:** The Diamond Double L conducts long and short horseback trips and overnight pack trips into Grand Teton Park; also big-game hunting trips into the adjoining territory. Grand Teton is strictly a trail park, and its beautiful canyons, glaciers, waterfalls, lakes and streams can be satisfactorily visited only on horseback. All desired types of trip are planned—one hour, one day, an all-summer pack trip, or an alpine trip to scale the peaks, with guides experienced in mountaineering. Sturdy, well-broken mountain horses and gentle ponies for children available at all times. Comfortable Western stock saddles. Pack trips include full camp equipment, guide, cook and wrangler, tents, sleeping bags with air mattresses—everything except personal effects.

**Rates:** Write to A. C. Lyon, Diamond

Double L Outfit, summer address after June 1st, Jenny Lake P. O., Wyoming, winter address Moose P. O., Wyoming.

## DOUBLE M RANCH (Brand )

**Location:** Near the historic mining town of Gold Hill, Colorado. Reached by daily stage from Boulder, Colorado (on the Union Pacific), or cars will meet guests on advance notification.

**Accommodations:** A Summer resort, operated in ranch style. The rustic main lodge, in a scenic setting, accommodates 35 guests. Rooms have comfortable beds, hot and cold water, lavatories and bath. Cabins for families or individuals. The best of food, fresh milk, butter, fruit and vegetables.

**Activities:** Camping parties planned, with competent guides, complete equipment and good saddle horses. Automobile trips to Estes-Rocky Mountain National Park, Pikes Peak region, Grand Lake, Mt. Evans, etc., and Cheyenne "Frontier Days." Special fishing trips.

**Rates:** \$18 and up per week. Address F. C. Molloy, President, Molloy Hotel and Scenic Tours, 1019 Spruce St., Boulder, Colorado.





"Father and Son" at Leek's Camp

## GAMELAND SPORTING RANCHES

*Location:* Yellow Pine, Idaho, 160 miles from Boise, Idaho. Guests met by appointment.

*Activities:* The management does not entertain at the ranch, but conducts pack trips through the wonderful Salmon River country of central Idaho. There are two 30-day trips for boys during July and August, respectively; and two similar trips for girls, conducted by a woman. Fishermen are outfitted from July 1st to September 15th, and big game hunters in October. Fine trout streams and lakes; game includes deer, bear, elk, mountain sheep and goat. First-class guides, cooks and packers, good, well-broken saddle and pack stock, and the best of equipment and food is furnished.

*Rates:* Rates and information on application. Write to Henry W. Partridge, Yellow Pine, Idaho.

## LEEK'S CAMPS (Brand $\mathcal{L}$ )

*Location:* East shore of Jackson Lake, at base of the Tetons, on main highway between Grand Teton and Yellowstone Park. Daily auto stages from Victor, Idaho, and Rock Springs, Wyoming.

*Accommodations:* New central lodge

and dining room. Private log cabins furnished to suit. Well-selected, appetizing meals.

*Activities:* Excellent trout fishing. Horseback trips to summer range of hundreds of elk; many moose may be seen. Motor and row boats. Saddle and pack horses. Bear-hunting parties, May 15th to June 15th; other big game during fall season.

*Rates:* On application. Write Manager of Leek's Camp, Jackson, Wyoming.

## LIBBY LODGE

*Location:* Barber Lakes, three miles from Centennial and 35 miles from Laramie, Wyoming, in the Snowy Range region.

*Accommodations:* Rustic lodge and cabins to care for eighty guests. A large lobby, dance hall, dining room; hot and cold running water in all rooms, baths, and new equipment throughout.

*Activities:* Saddle horses by day or week, with guide if desired. Trails radiate from Lodge into virgin forests, where in season may be hunted bear, deer, and other game. Situated on Libby Creek with excellent trout fishing. Motor trips to Estes Park.

*Rates:* American plan, single \$3 per day; double \$5.50. For weekly or monthly rates and other information write: Mrs. Lillie M. Smith, Libby Lodge, Centennial, Wyoming.

## MACK'S INN

*Location:* On the Snake River, near Trude, Idaho, on the Yellowstone branch of the Union Pacific; ranch car meets guests at station.

*Accommodations:* The rustic but modern cabins accommodate 100 people. Inn serves good meals with fresh foods.

*Activities:* Good fishing; boating. Elk, deer and bear at Mt. Sawtelle, four miles away. Guides and saddle horses available. Pack trips arranged through the rugged game country north and west of Yellowstone Park.

*Rates:* Write W. H. Mack, Mack's Inn P. O., Idaho.



*At Camp, Big Game Hunting, from Moosehead Ranch*

### MEDICINE BOW LODGE

*Location:* In the Snowy Range on the western slope of the Medicine Bow National Forest. Eighteen miles southeast of Saratoga, Wyoming. Elevation, 8,000 feet. Guests met at Laramie or Walcott, Wyoming, nearest Union Pacific stations.

*Accommodations:* Twenty-six cabins for 150 guests. Bath house with hot and cold water; first-class sanitation. Daily menu includes fresh butter, eggs, milk, vegetables and choice meats.

*Activities:* Fishing is the chief attraction as there are three fine trout streams within walking distance of the lodge. Special pack trips to the Snowy Range, with skilled guides who do all the cooking and handle the horses. The 100 small but beautiful lakes in the vicinity are crystal-clear, and full of graceful, darting trout. The skillful angler easily catches his limit.

*Rates:* Weekly, including board, \$24 in cabins. Daily, American plan, \$3.50. Guides, \$10 a day; saddle horses \$2.50 a day. Address Plummer & Co., Prop., Medicine Bow Lodge, Saratoga, Wyoming.

### MOOSEHEAD RANCH

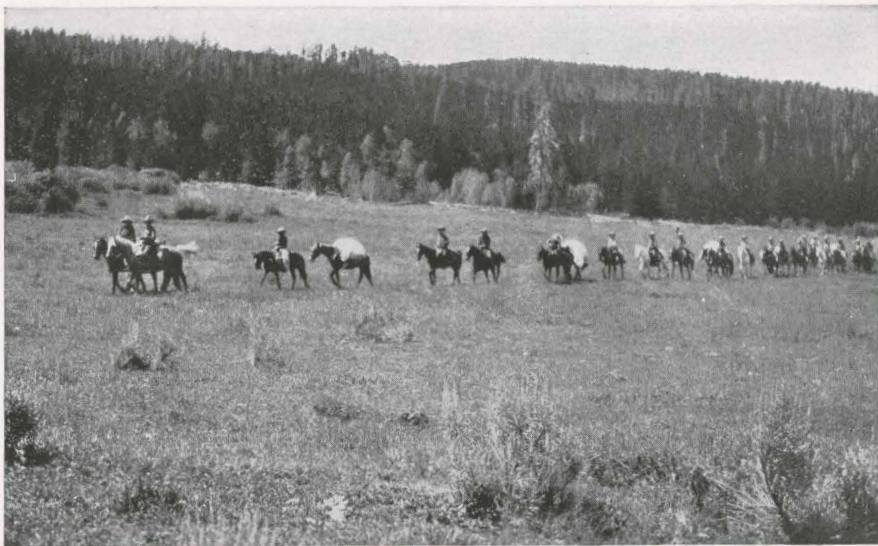
*Location:* On Spread Creek, 28 miles north of Jackson, Wyoming, at Elk P. O. Grand Teton National Park is about 10 miles west of ranch. Reached by auto stage from either Victor, Idaho, or Rock Springs, Wyoming, both on Union Pacific.

*Accommodations:* Dining room and kitchen in one building; a ranch lobby; separate sleeping cabins of one and two rooms. Mrs. Topping is hostess and her garden and poultry departments are show places. Ranch has its own dairy.

*Activities:* Gentle saddle horse for each guest. Fishing and camping trips can be arranged. The manager, Fred J. Topping, a big game guide in the Jackson Hole Country for 20 years, specializes on bear and elk hunting. Winter guests accommodated.

*Rates:* Summer rates at Moosehead Ranch, \$45 per week for board, lodging, and use of saddle horse. Guide service is \$4.00 per day during summer, and \$7.50 per day during hunting season. Rates for Spring Bear Hunting on request. Fred J. Topping, Moosehead Ranch, Elk P. O., Jackson Hole, Wyoming.





*Pack Train Off to the Mountains*

## ROCKING NF RANCH

*Location:* Half a mile from Ketchum, Idaho, on the Union Pacific, via Shoshone, Idaho.

*Accommodations:* Furnished cabins; good meals served at the ranch.

*Activities:* Ned Foster, the proprietor, has 30 years' experience as a guide, hunter and forest ranger, and has competent assistants. Saddle horses and guides for pack trips but features a two weeks' outing of western camp life in scenic Sawtooth Mountains with guide, saddle horse, food, fishing, full equipment for \$70. No other charges.

*Rates:* For other rates write to Ned Foster, Ketchum, Idaho.

## SK RANCH

James S. Simpson, pioneer bonded guide in Wyoming for more than 35 years, owner of the SK Brand, will conduct summer camps for boys or girls, or both; his fishing, hunting and pack trips from Turpin Meadows Lodge, in the heart of the Jackson Hole country. In the fall Mr. Simpson will outfit his hunting parties from this lodge, which is operated by his daughter Helen and son-in-law Lester N. Leek.

*Accommodations:* In cabins if at lodge, or in well-equipped camp outfits.

*Rates:* For additional information and reservations write Jas. S. Simpson, Turpin Meadows Lodge, Elk P. O., Wyoming.

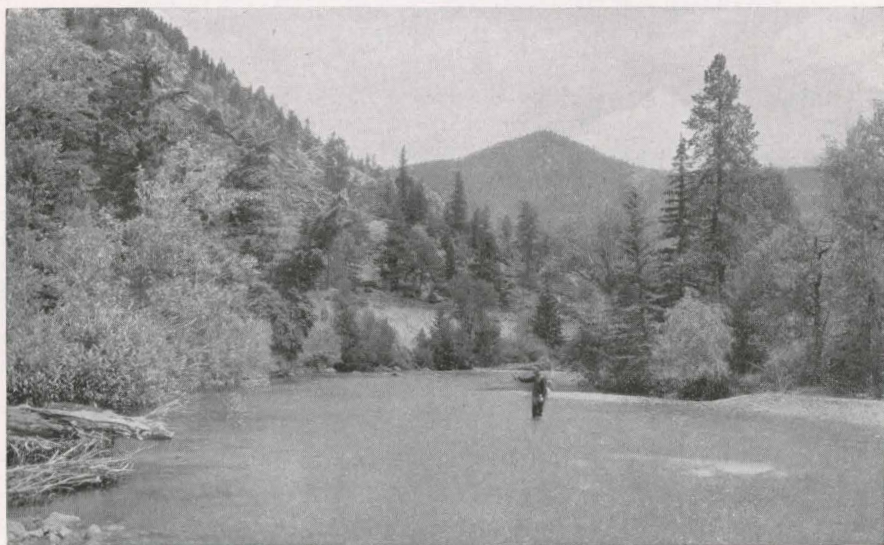
## TURPIN MEADOWS LODGE

*Location:* On Buffalo River, 20 miles east of Moran, Wyoming, in the heart of the Jackson Hole hunting country.

*Accommodations:* Single and double log cabins for 25 people; central bath house with hot and cold showers; dining room. Fresh vegetables and fruits in daily menu. Local and long-distance phone. Accommodations for additional guests on camping and pack trips.

*Activities:* Excellent fly-fishing. Horse-back riding; pack trips of any duration. Elk, moose and deer within an hour's ride of the lodge at all times. Big Game Hunting: Satisfaction guaranteed on spring bear hunting, May 1st to June 15th. Other game during fall season.

*Rates:* On application. Lester N. Leek, Elk P. O., Wyoming.



*Trout Fishing, a Good Investment for the "T.B.M."*

### TRIANGLE F LODGE (Brand ▽)

*Location:* A cabin camp on the Hoback River south of Jackson Hole, surrounded by the Gros Ventre and Hoback mountains. Elevation 6,600 feet. Guests met by appointment at Victor, Idaho, or Rock Springs, Wyoming.

*Accommodations:* Main lodge and separate cabins for about 25 guests. Excellent meals in lodge dining room. Recreation room; electric lights. Simple comforts of a Rocky Mountain ranch life.

*Activities:* Horseback trips; camp trips to mountain lakes and trout streams. Good fishing within walking distance. A big game hunting camp in season; rates on request.

*Rates:* \$40 a week including use of saddle horse. For reservations write W. E. Hiatt, Triangle F Ranch P. O., Wyoming.

### V BAR V RANCH (Brand ∇-V)

*Location:* Hoback Basin, 30 miles southeast of Jackson, on the Rock Springs-Yellowstone Highway. Reached in a few hours from Rock Springs, Wyoming or from Victor, Idaho.

*Accommodations:* Main ranch building and comfortable cabin camp adjacent for 30 guests; large open fireplace; bath; complete comfort throughout. Variety of fresh foods.

*Activities:* Fine fishing in nearby streams. Each guest has use of a saddle horse; children taught to ride; trips to Ramshorn Peak and Hot Springs on week-ends. Good hunting in season for elk, mountain sheep and deer.

*Rates:* \$40 a week each; children under 12, half rates. Frank E. Van Vleck, V Bar V Ranch, Bondurant, Wyoming. Wires via Victor, Idaho.

### WYOMING RIDING CAMP FOR BOYS

The Ranch Headquarters are near Jenny Lake, Jackson Hole, near the Grand Teton National Park. Rail station is Victor, Idaho. Membership in Camp is limited to 20 boys between the ages of 13 and 18; references exchanged. Providing a summer of instruction in western riding, camping, fishing, exploring, woodcraft, forestry, attending rodeos, hunting with kodak; a summer of "Old West" life. The fee for the regular camp season of eight weeks is \$300.

For descriptive folder and further information about rates and reservations—write: John A. Young, address until July 1st: 531 West 122nd St., New York City.



# Big Game Hunting

## DIRECTORY

THE dude ranch country along the Union Pacific provides as fine a "happy hunting ground" as will be found in the continental United States. Many of the ranches are so advantageously located that big game may be found within an hour's trip from the ranch. Others maintain fully equipped hunting camps in the wilder regions for those who prefer to take pack trips and "rough it." Competent guides guarantee successful hunts in these famous Rocky Mountain regions of Montana, Wyoming and Idaho, where in season one may hunt grizzly, brown or black bear, elk, deer, mountain sheep and goats, moose and other game. As the season, license fees, game and limits differ in the various states and localities, hunters are urged to communicate direct with the ranches and outfits described in this book. The Union Pacific representatives listed opposite page 60 will be glad to furnish hunting information and arrange all details for the trip.

For accessibility, abundance of game, expert guides, excellent equipment and service, and high type personnel, the following outfits are recommended:

OUTFITTER	RANCH	ADDRESS
Mrs. Ralph Allan	Allan Ranch	Augusta, Mont.
Irving Corse	Bar BC Ranch	Moose P. O., Wyo.
Boyle's Ranch	Boyle's Ranch	Stanley P. O., Idaho
Clark Brody	Castle Rock Ranch	Jackson, Wyo.
Chas. C. Moore	CM Ranch	Dubois, Wyo.
Gerald H. Brown	Crescent Lazy H Ranch	Wilson, Wyo.
Bill Martzel	Cross Quarter Circle	West Yellowstone, Mont.
John A. Dew	DC Bar Ranch	Kendall, Wyo.
Jan G. Boissevain	Double Arrow Ranch	Greenough, Mont.
O. W. Potter	E Bar L Ranch	Greenough, Mont.
Ernest Miller	Elkhorn Ranch	Bozeman, Mont.
Frank Dew	Flying A Ranch	Daniel, Wyo.
John F. Woodman	Flying V Ranch	Kelly, Wyo.
A. R. Strong	Four S Hereford Ranch	Soda Springs, Idaho
Henry W. Partridge	Gameland Sporting Ranches	Yellow Pine, Idaho
S. D. Decker	GP Bar Ranch	Cora, Wyo.
David Abercrombie	Gros Ventre Ranch	Kelly, Wyo.
Frank O. Horton	HF Bar and Paradise Ranches	Buffalo, Wyo.
J. W. Howell	Holm Lodge	Cody, Wyo.
C. W. Gillespie	Idaho Rocky Mountain Club	Stanley, Idaho
"Cap" Eli Laird	Laird's Recreation Lodge	Seeley Lake P. O., Mont.
J. A. Shaw	LU Bar Ranch	Dwyer, Wyo.
S. N. Leek	Leek's Camp	Jackson, Wyo.
W. H. Mack	Mack's Inn	Mack's Inn P. O., Idaho
J. A. Hopkins	M J G Ranch	Joseph, Ore.
Fred J. Topping	Moosehead Ranch	Elk P. O., Wyo.
W. L. Beal	Mt. Haggin Ranch	Anaconda, Mont.
Ira S. Bean	Open B Ranch	Marshall, Wyo.
Charles Murphy	Ox Yoke Ranch	Emigrant, Mont.
Geo. W. Pierson	Pierson's Dude Ranch	Del Piedra, Calif.
Chase A. Clark	Robinson Bar Ranch	Mackay, Idaho
Ned Foster	Rocking NF Ranch	Ketchum, Idaho
J. Ed Bower	Seven Up Ranch	Lincoln, Mont.
Buster Estes	STS Ranch	Moose P. O., Wyo.
Simon Snyder	Sunlight Ranch	Cody, Wyo.
H. W. Cone	Teton Lodge	Moran, Wyo.
Robert S. Cox	T Cross Ranch	Dubois, Wyo.
W. E. Hiatt	Triangle F Lodge	Triangle F Ranch P. O., Wyo.
J. S. Turner	Triangle X Ranch	Elk P. O., Wyo.
James S. Simpson	Turpin Meadows Lodge	Elk P. O., Wyo.
Lester N. Leek	Turpin Meadows Lodge	Elk P. O., Wyo.
L. O. McMichael	Two N Ranch	Dubois, Wyo.
I. H. Larom	Valley Ranch	Valley, Wyo.
F. E. Van Vleck	V Bar V Ranch	Bondurant, Wyo.
Harold R. Hammond	White Grass Ranch	Moose P. O., Wyo.
J. C. Monday	Y-Cross Ranch	Horse Creek, Wyo.

# AN INDEX TO THE DUDE RANCHES

## THE JACKSON HOLE REGION, WYOMING

	Page
Bar BC Ranch.....	5
Crescent Lazy H Ranch.....	6
Double Diamond Ranch.....	6
Flying V Ranch.....	7
Gros Ventre Ranch.....	8
STS Ranch.....	9
Teton Lodge.....	10
Triangle X Ranch.....	11
White Grass Ranch.....	11
Jackson Hole Winter Sports.....	12

## WIND RIVER—GREEN RIVER REGIONS, WYOMING

CM Ranch.....	13
DC Bar Ranch.....	14
Flying A Ranch.....	14
GP Bar Ranch.....	15
HF Bar and Paradise Ranches.....	16
Two N Ranch.....	16
T Cross Ranch.....	17

## CONTINENTAL DIVIDE AND SNOWY RANGE REGION, WYOMING

A Bar A Ranch.....	18
Bar ED Ranch.....	18
Boyer YL Ranch.....	19
LU Bar Ranch.....	20
One-Bar-Eleven Ranch.....	20
Open B Ranch.....	21
Sky Meadows Ranch.....	22
Y-Cross Ranch.....	23

## COLORADO RANCHES

LX Bar Ranches.....	24
Land O' Peaks Ranch.....	25
Phantom Valley Ranch.....	26
Ralston Creek Ranch for Boys.....	27
Rugh Ranch.....	28
Saddle Pocket Ranch.....	28
S Bar L Ranch.....	28
SLW Home Ranch.....	29
Smillie's F Slash Ranch.....	30
Tom Tucker Ranch for Boys.....	30
Trail's End Ranch for Boys.....	31

## WEST YELLOWSTONE—SHOSHONE RANCHES, WYOMING

Holm Lodge, on Crossed Sabres Ranch.....	33
The Valley Ranch.....	34
Sunlight Ranch.....	35



## MONTANA RANCHES

	Page
Cross Quarter Circle Ranch.....	37
Double Arrow Ranch.....	37
E Bar L Ranch.....	38
Elkhorn Ranch.....	39
Forsythe Range, Inc.....	39
H Bar 9 Ranch.....	39
Laird's Recreation Lodge.....	40
Mount Haggin Dude Ranch.....	41
Ox Yoke Ranch.....	42
Seven Up Ranch.....	43

## IDAHO RANCHES

Boyle's Ranch.....	44
Four S Hereford Ranch.....	44
Idaho Rocky Mountain Club.....	45
Robinson Bar Ranch.....	46

## OREGON RANCHES

Diamond-and-a-Half Ranch.....	47
MJG Ranch.....	47

## CALIFORNIA RANCHES

Glenn Ranch.....	48
North Verde Ranch.....	48
Pierson Dude Ranch.....	49

# CAMPS - GUIDES - LODGES - RESORTS

(See Introduction Page 51)

	Page		Page
Alturas Lake Resort (Idaho).....	51	Libby Lodge (Wyoming).....	54
Big Springs Inn (Idaho).....	51	Mack's Inn (Idaho).....	54
Bower's Ranch (Idaho).....	51	Medicine Bow Lodge (Wyoming).....	55
Brooklyn Lodge (Wyoming).....	51	Moosehead Ranch (Wyoming).....	55
Camp Chief Ouray (Colorado).....	52	Rocking NF Ranch (Idaho).....	56
Castle Rock Ranch (Wyoming).....	52	SK Ranch (Wyoming).....	56
Diamond Double L Outfit (Wyoming).....	53	Turpin Meadows Lodge (Wyoming).....	56
Double M Ranch (Colorado).....	53	Triangle F Lodge (Wyoming).....	57
Gameland Sporting Ranches (Idaho).....	54	V Bar V Ranch (Wyoming).....	57
Leek's Camps (Wyoming).....	54	Wyoming Riding Camp for Boys (Wyoming).....	57





*Union Pacific Booklets Are Reliable Guides*



*Travel Experts Will Plan Every Detail*

## Why Your Journey Should Be Via Union Pacific

**UNION PACIFIC SERVICE.** The Union Pacific operates fast fine through trains from Chicago via Omaha, and from St. Louis via Kansas City to all the "Dude Ranch" regions described herein. It has the best and fastest service to Ashton and Victor, Idaho, and West Yellowstone, Montana. Fast through trains leave Chicago, St. Louis, Omaha and Kansas City daily for the principal cities of the West, including Denver, Salt Lake City, Los Angeles, San Francisco and Portland. They carry the latest and best equipment, including new type observation and dining cars; Union Pacific dining car service is of high excellence and reasonable in price. The Union Pacific from Omaha to Ogden and Salt Lake City is double track. All its lines are protected by automatic electric safety signals. Its smooth roadbed is ballasted with clean, resilient Sherman gravel.

Through tickets to Yellowstone Park and the Pacific Coast permit visits to Denver and Colorado Springs without extra rail fare. This makes possible a tour of Rocky Mountain, Yellowstone and Grand Teton National Parks in connection with a trip to the "Dude Ranch" regions. Ask about side trips to Zion-Bryce Canyon-Grand Canyon National Parks.

Any representative listed on opposite page will gladly give full information concerning routes, train service, fares, stop-overs, etc., and will furnish any of the following illustrated booklets upon request:

Yellowstone-Grand Teton National Parks,  
Zion-Grand Canyon-Bryce Canyon National

Parks, Colorado Mountain Playgrounds, The Pacific Northwest and Alaska, California, "They Say," Along the Union Pacific System, Dude Ranches Out West, United States Folder Map and Hoover Dam Folder Map.

**WHAT TO EXPECT.** Most of these "Dude Ranches" offer simple comforts and a choice of rugged outdoor exercise or quiet relaxation in beautiful scenic country; not elaborate superfluities and country club social activities. Read the folders issued by the managers. Some offer more refinements than others.

**WHAT TO WEAR.** Felt hats, wool shirts, khaki trousers or riding breeches, puttees and heavy walking shoes are about right for ranch life. Those planning pack trips to higher altitudes should have warm underwear, sheepskin jackets, sweaters, gloves, etc. Keep in mind the cold nights, the warm mid-day sun, possible rain and snow, and outfit accordingly.



*This is the brand of the Dude Ranchers' Association, address Billings, Montana, and appears in this booklet next to those ranches that were members of the Association at the time booklet was issued.*

*The Union Pacific believes its statements, as set down herein and verified as far as possible, to be reliable; but it cannot guarantee them, as it has no part in the management of these ranches. Persons interested should correspond in advance with the dude-ranch managers.*

# Representatives of the Union Pacific System

Aberdeen, Wash.	3 Union Pass'r Sta., K and River Sts., W. E. M. SCHLOEMAN, Dist. Frt. and Pass'r Agt.
Astoria, Ore.	Ninth Street Dock, MILTON A. FUEGY, Traffic Agent
Atlanta, Ga.	1232 Healey Building, W. C. ELGIN, General Agent
Bend, Ore.	1036 Wall Street, H. D. ATHON, Traveling Freight and Passenger Agent
Boise, Idaho.	Tenth and Front Streets, JOEL L. PRIEST, General Agent
Boston, Mass.	207 Old South Bldg., 294 Washington Street, WILLARD MASSEY, General Agent
Butte, Mont.	229 Rialto Bldg., 4 South Main Street, HENRY COULAM, General Agent
Cheyenne, Wyo.	Union Pacific Station, N. A. MILLER, Ticket Agent
Chicago, Ill.	City Ticket Office, 6 S. La Salle St., Oris Bldg., A. G. BLOOM, Gen'l Agt., Pass'r Dept.
Cincinnati, Ohio.	705 Dixie Terminal Bldg., 4th and Walnut Sts., F. B. SWOPE, General Agent
Cleveland, Ohio.	1006 Terminal Tower Bldg., 50 Public Square, W. H. BENHAM, General Agent
Council Bluffs, Iowa.	City Office, C. & N. W. Broadway Sta., 11th & Broadway, H. B. ELLER, City Agent
Dallas, Texas.	909 Magnolia Bldg., Commerce and Akard Streets, E. G. KOENEMAN, General Agent
Denver, Colo.	601 Seventeenth Street, W. T. PRICE, Ass't Gen'l Frt. and Pass'r Agent
Des Moines, Iowa.	407 Equitable Bldg., Sixth and Locust Streets, F. P. STAFFORD, General Agent
Detroit, Mich.	508 Transportation Bldg., 131 Lafayette Blvd., West, A. R. MALCOLM, General Agent
East Los Angeles, Calif.	5454 Ferguson Drive, G. L. MALQUIST, Ticket Agent
Eugene, Ore.	348 19th Ave., East, E. S. FARRELL, Traveling Freight and Passenger Agent
Fresno, Calif.	207 Rowell Bldg., Tulare St. and Van Ness Ave., T. F. BROSNAHAN, General Agent
Glendale, Calif.	129 South Brand Boulevard, C. A. REDMOND, General Agent
Hollywood, Calif.	City Ticket Office, 6732 Hollywood Boulevard, H. W. HICKS, Gen'l Agt., Pass'r Dept.
Kansas City, Mo.	805 Walnut Street, SETH C. RHODES, Gen'l Agt., Pass'r Dept.
Lewiston, Idaho.	Room 7, Union Depot, H. J. BERGER, Traveling Freight and Passenger Agent
Lincoln, Neb.	City Ticket Office, Federal Trust Bldg, 1308 N Street, A. D. GRANT, General Agent
Long Beach, Calif.	Wise Bldg., 220 Pine Avenue, R. W. SMOCK, General Agent
Longview, Wash.	City Ticket Office, 732 South Broadway, G. L. ANDERSON, General Agent
Los Angeles, Calif.	City Ticket Office, 732 South Broadway, L. M. BROWN, Gen'l Agent, Pass'r Dept.
Milwaukee, Wis.	814 Warner Bldg., 212 W. Wisconsin Avenue, K. T. MINDEMANN, General Agent
Minneapolis, Minn.	890 Northwestern Bank Bldg., 620 Marquette Ave., E. H. HAWLEY, General Agent
New Orleans, La.	1001 New Orleans Bank Bldg., 226 Carondelet Street, G. J. GARMON, General Agent
New York, N. Y.	Room 402, 521 5th Avenue, H. A. LAWRENCE, Gen'l Agt., Pass'r Dept.
Oakland, Calif.	215 Central Bank Bldg., 436 14th Street, JAMES WARRACK, General Agent
Ogden, Utah.	Union Pass'r Station, 25th St. and Wall Ave., C. L. MCKNIGHT, General Agent
Omaha, Neb.	City Ticket Office, 1523 Farnam Street, J. O. GOODSELL, Gen'l Agent, Pass'r Dept.
Pasadena, Calif.	222 East Colorado Street, C. F. FARMER, General Agent
Philadelphia, Pa.	906 Girard Trust Co. Bldg., Broad St. & So. Penn Sq., H. L. LAUBY, General Agent
Pittsburgh, Pa.	216 Oliver Bldg., Smithfield St. and Sixth Ave., JOHN D. CARTER, General Agent
Pomona, Calif.	Union Pacific System Passenger Station, A. C. SMITH, Passenger and Freight Traffic Agt.
Portland, Ore.	City Ticket Office, 341 Washington St., J. C. CUMMING, Gen'l Agent, Pass'r Dept.
Redlands, Calif.	4 Orange Street, Fisher Bldg., L. C. FOWLER, Passenger and Freight Traffic Agent
Reno, Nev.	200 Lyon Bldg., Second and Center Streets, E. E. LARKIN, General Agent
Riverside, Calif.	Glenwood Mission Inn, 3680 Main Street, R. E. DRUMMY, General Agent
Sacramento, Calif.	217 Forum Bldg., 1107 Ninth Street, C. T. SLAUSON, General Agent
St. Joseph, Mo.	517 Francis Street, LOUIS MOTTER, Gen'l Frt. and Pass'r Agent, St. J. and G. I. Ky.
St. Louis, Mo.	203 Carleton Bldg., 308 North 6th Street, F. F. ROBINSON, General Agent
Salt Lake City, Utah.	City Ticket Office, Hotel Utah, Main and S. Temple Sts., E. A. KLIPPEL, Jr., General Agent, Passenger Department
San Diego, Calif.	345 Plaza Street, E. H. HODGINS, General Agent
San Francisco, Calif.	City Ticket Office, 355 Geary St., Stewart Hotel, H. A. BUCK, Gen'l Agt., Pass'r Dept.
San Jose, Calif.	501 1st Nat'l Bank Bldg., Santa Clara & 1st Streets, L. A. WIRGLER, District Passenger Agent
San Pedro, Calif.	101 West Seventh Street, R. M. RITCHIEY, General Agent
Santa Ana, Calif.	305 North Main Street, W. F. NASH, Jr., General Agent
Santa Monica, Calif.	602 Santa Monica Boulevard, W. A. SHOOK, General Agent
Seattle, Wash.	204 Union Station, 4th Ave. & Jackson St., S. C. FROST, General Agent
Spokane, Wash.	204 Union Station, 4th Ave. & Jackson St., H. M. WEST, Ass't Gen'l Frt. and Pass'r Agent
Tacoma, Wash.	City Ticket Office, 1403 Fourth Ave., A. L. IVES, General Agent, Passenger Department
Toronto, Ontario.	727 Sprague Avenue, T. J. DOWD, District Freight and Passenger Agent
Tulsa, Okla.	114 South Ninth Street, G. L. LEONARD, District Freight and Passenger Agent
Walla Walla, Wash.	201 Canadian Pacific Bldg., 69 Yonge Street, GEO. W. VAUX, General Agent
Winston-Salem, N. C.	320 Kennedy Bldg., 321 South Boston Street, J. C. BEAUMONT, General Agent
Yakima, Wash.	Baker Bldg., Main and Second Sts., J. H. CUNNINGHAM, District Frt. and Pass'r Agent
	329 Reynolds Building, J. O. DUCKETT, Traveling Freight and Passenger Agent
	Union Pacific Bldg., 104 W. Yakima Ave., H. M. ADKINS, Dist. Freight and Pass'r Agent

## DEPARTMENT OF TOURS (Union Pacific System—C. & N. W. Ry.)

**J. C. POLLOCK, Manager**  
137 S. LaSalle St., Chicago, Ill.

**D. S. SPENCER**  
Gen'l Pass'r Agent  
SALT LAKE CITY, UTAH

**J. P. CUMMINS**  
Gen'l Pass'r Agent  
PORTLAND, ORE.

**GEO. R. BIERMAN**  
Gen'l Pass'r Agent  
LOS ANGELES, CALIF.

**JOHN L. AMOS**  
Asst. Traffic Mgr.  
Union Pacific Bldg.  
10 South Main St.  
SALT LAKE CITY, UTAH

**A. S. EDMONDS**  
Asst. Traffic Mgr.  
Pittcock Block  
PORTLAND, ORE.

**A. V. KIPP**  
Asst. Traffic Mgr.  
Pacific Electric Bldg.  
LOS ANGELES, CALIF.

**W. H. OLIN**  
Asst. Traffic Mgr.  
415 Monadnock Bldg.  
681 Market St.  
SAN FRANCISCO, CALIF.

**C. J. COLLINS**  
Ass't Passenger Traffic Mgr., OMAHA, NEB.

**W. S. BASINGER**  
Passenger Traffic Manager, OMAHA, NEB.



F' Y H ⚡ U

B 7U 4 H-B

BC γ ∞ STS HF

E/L N A V-V  
GP 2

◇ ◇ LU ◇ ◇

◇ ◇ M

(H)



M

V

G

△ △



FE



W

f

+

