



© GIFFORD

Multnomah Falls, Oregon  
Along the Columbia River





## EVENING MEAL

Steward  
B.P.Owen

### Dinner **Special**

Diner #366  
July 1. 1930

Grape Fruit Cocktail, Grenadine 40	
Soup-Chicken Gumbo with Rice en Tureen	35
Consomme, hot or jellied en Tasse	25
Burr Gherkins 25 Sliced Cucumbers 30 Olives	25
U.P. Mountain Trout, Specialty D <sup>o</sup> Luxe	90
Filet of Sole Saute, Sauce Piquante	75
Baked Oregon Salmon, au Gratin	75
Vegetable Dinner with Peached Egg	75
Fricassee of Chicken with Noodles	85
Small Dinner Steak, Saute Potatoes	90
Veal Sweetbreads Saute with Bacon	90
Grilled Lamb Chops, String Beans	85
Baked Macaroni with Cheese	40
Omelet with Wine Jelly 65 with Marmalade	65
Baked Sugar Cured Ham, Sauce Yorkshire	80
Cold Corned brisket of beef, potato salad	70
Cold sliced breast of chicken, sliced tomato	1.00
Salads-Pear and Cheese 40 Tomato and Egg	50
Lettuce and Tomato 50 Crab Meat 65 Shrimp	65
Potatoes-Rissole 25 Creamed 25 Persillade	25
Creamed Fresh Spinach 25 New String Beans	25
Black Walnut Ice Cream 25 with Sweet Wafers	35
Red Raspberries & Cream 35 Chilled Watermelon	30
Cherry Pie 20 with Cheese 25 Honey Dew Melon	35
Requefort Cheese, toasted Crackers	35
Hot Corn Bread or Assorted Bread 15	
Coffee, tea, Cocoa 25 Iced 25 Milk 15	

H. A. HANSEN, Supt, Dining Car and Hotel Dept., Omaha, Neb.  
F. E. LEWIS, Manager, Dining Car and Hotel Dept., Union Pacific System, Ogden, Utah



MINERAL WATERS, BEVERAGES, ETC.

Steward  
B.P.Owen

Diner #366  
July.1.1930

# Dinner

TABLE D'HOTE

\$1.25

Seup-Chicken Gumbo with Rice

Garden Radishes

Green Olives

Filet of Sole, Sauce Piquante

Small Dinner Steak, Mushroom Sauce

Fricassee of Chicken with Needles

(Available Cold Meat will be served in  
lieu of hot meat on request)

Risselle Potatoes

Creamed New Spinach

Hot

Corn

Bread

Head Lettuce, French Dressing

Black Walnut Ice Cream, Sweet Wafers

Pabst-Ett Cheese, toasted Crackers

Coffee

Tea

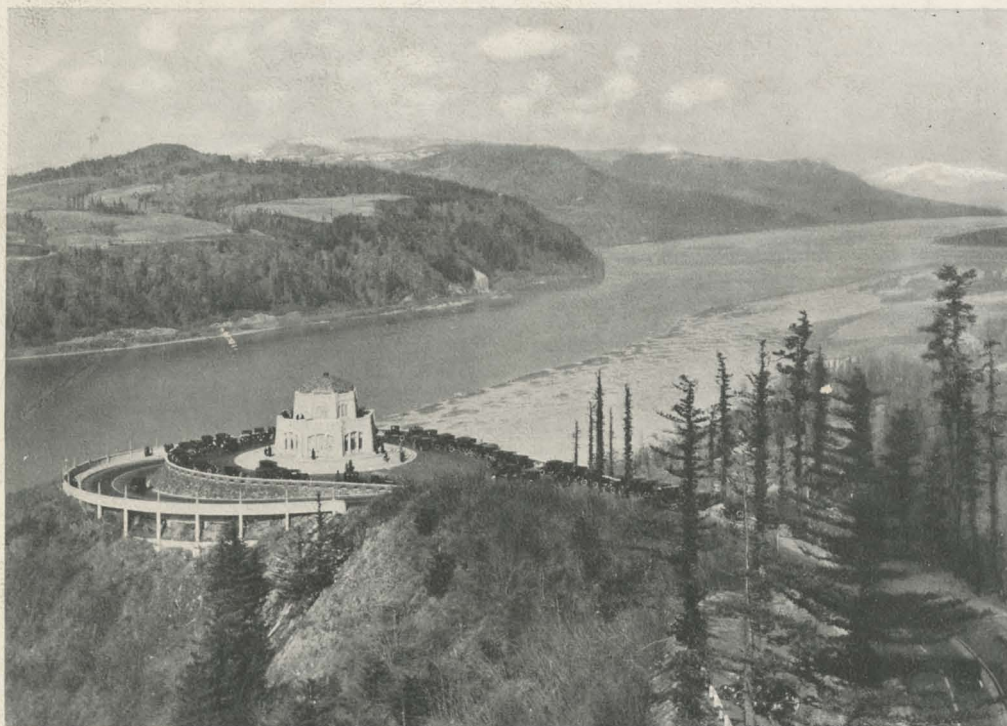
Milk

Cocoa

Iced Tea

Lemonade





The Columbia River, Crown Point and Vista House

## The Columbia River Region

ALONG the great Columbia River for 337 miles runs one of the most magnificent scenic highways in America. For more than 200 miles the Union Pacific parallels both the Columbia River Highway and the mighty stream, and during the summer it operates open-top observation cars between The Dalles and Portland. Union Pacific passengers obtain wonderful views of the rugged gorge of the Columbia and its splendid waterfalls. Among the latter are Latourell, Mist, Bridal Veil, Wahkeena and Horsetail. Most celebrated of all, however, is enchanting Multnomah (named after an Indian tribe), leaping daintily more than 600 feet into a mossy rock basin and taking rank among the highest and loveliest waterfalls in the United States.

Other features of the Columbia River Route to the Pacific Northwest are Crown Point, Shepperds Dell, St. Peters Dome, the Cascades, the Bridge of the Gods, Oneonta Gorge, the Mitchell Point Tunnel and Beacon Rock. The historic old Oregon Trail followed the Columbia River as it cut its majestic course through the forested heights of the Cascade Mountains, past such lofty peaks as Mt. Hood, Mt. St. Helens, Mt. Jefferson, and Mt. Adams. The walls of the great gorge are always overspread with the rich verdure of flowering plants and evergreen trees. From Portland, "the Rose City," near the western end of the Columbia River Highway, rail lines and motor roads extend to many attractive seashore and mountain resorts, and the Union Pacific continues northward to the great Puget Sound cities, Tacoma and Seattle, also gateways to many splendid recreation regions, as well as to Alaska and the Orient:

