

# WESTERN WONDERLANDS

## UNION PACIFIC







## Western Wonderlands

WESTWARD from the alluvial sweep of the Missouri, extending from the Canadian border to the Gulf, lies the great American vacation empire. Within its vast expanse, the forethought and ingenuity of man have been exercised to preserve and to make accessible to all, the natural beauties which Nature has provided so lavishly.

To choose from among the variety of vacation attractions in this vast area is a difficult task, without assistance.

Within the covers of this booklet, the Union Pacific System has included a glimpse of each of the several National Parks and of the other important tourist centers which are served by its network of railroads and railroad connections, extending to every part of the West. In brief form, this booklet presents the important facts about each region. Its purpose is to assist in making a preliminary selection of a vacation.

After this booklet has served its purpose, the reader is cordially invited to send in the coupon on page 22. This will bring him books of the Union Pacific Travel Library, authentic and complete information on the West, fully illustrated.

Union Pacific travel service is complete in every respect. Its offices, located in many of the important cities of the United States (see page 23), are manned by travel experts whose duty and pleasure it is to see that the railroad's patrons are assured, by careful planning, the full enjoyment of a Western trip. Its rail lines and connections extend to every corner of the West and twelve National Parks are on or adjacent to the rails of the Union Pacific System.





*The Great White Throne, Zion National Park*





*The New Grand Canyon Lodge, Grand Canyon National Park*

## Colorful Canyons *of* Scenic Splendor

*Cedar City, Utah,  
One of America's  
Latest Vacation  
Capitals*

Southwestward by an overnight Pullman ride from Salt Lake City, just off the Los Angeles line of the Union Pacific System, lies the Mormon town of Cedar City, Utah. Once just another of Utah's thriving villages, lacking even railroad service, today Cedar City recalls pleasant memories to thousands of people in both hemispheres. It was the starting-place for them of five days or more among Nature's masterpieces: Zion, Grand Canyon and Bryce Canyon National Parks, the Cedar Breaks. Kaibab National Forest, fittingly called "America's Greatest Combination Scenic Tour."

*Three of Our  
Newest  
National Parks*

These five regions are truly frontier vacation-lands. As late as 1919, they were little known. In that year, Zion and Grand Canyon were made National Parks. In 1925 the Union Pacific completed its fine lodges at Zion and Bryce. In 1928 their building program was climaxed by the completion of beautiful Grand Canyon Lodge; the same year, Bryce Canyon became our newest National Park.

One word, *color*, is the common denominator of



*Zion  
National Park*

all these regions, color in a bewildering variety of shades, tints and combinations, overlaid on colossal buttes, rock temples and chasms of breath-taking grandeur.

A five-day tour includes all five regions. One day is spent en route Cedar City to Zion, and in the Park itself. Zion Canyon, the principal spectacle of Zion National Park, is a narrow and extremely deep gorge, flanked on either side by majestic rock temples, towering walls and stupendous buttes. From Zion Lodge, within the canyon, motor-bus trips may be made to The Narrows; excursions on horseback to the rims provide the visitor with tremendous panoramas of the red and white towers and temples of Zion and of miles of tinted plateau and plain.

*Across the Mesas to  
Grand Canyon*

Another day is occupied in the 142-mile trip (126 miles when the Mt. Carmel Highway is completed) by motor, from Zion, across the colorful Prismatic Plains, through the verdant Kaibab Forest to Grand Canyon. Next to the first glimpse of Grand Canyon, the chief event of the day is the ride through the Kaibab. The largest and most beautiful virgin forest in America, its grassy, open "parks" and

*The Grand Canyon from Grand Canyon Lodge*







*The Temple of Osiris, Bryce Canyon National Park*

*Grand Canyon, One  
of the Greatest  
Scenic Wonders of  
the World*

avenues of fir, spruce and pine are alive with thousands of blacktail deer.

Grand Canyon defies the efforts of writers and artists to adequately record its beauties. The twelve-mile width of its chasm, the vast, sunken mountains that lie in its mile of depth, are so stupendous as to be almost beyond understanding. Add to this the sea of flaming, changing colors that overlies its rock temples and penetrates its depths, and you have some inkling of the elements that make it one of the world's greatest scenic spectacles. Beautiful Grand Canyon Lodge, built of native stone and of logs, blends into its surroundings as though it had stood there through the ages.

After two nights and a day at Grand Canyon, a part of the journey is retraced on the northward way to Bryce Canyon. Along in the afternoon, the highway swings into Red Canyon, whose rich, colorful turrets and towers are a fitting prelude to the greater glories of Bryce.

Bryce Canyon National Park presents another phase of these strange, colorful vacationlands. Rather than a canyon, it is a vast amphitheatre, a thousand feet deep from the rim on which stands



*Bryce Abounds in  
Colorful Fantasies  
in Filigreed Stone*

*A Splendid Tour,  
Splendidly Planned  
in Every Detail*

Bryce Canyon Lodge. From its depths, filled with architectural forms from all the ages, rises a myriad of figures, spires and statues, lacework and filigree in stone—bizarre, weird, almost unearthly in their brilliant colorings. The canyon can be viewed from several vantage points on the rim; a number of easy trails, for horseback or hiking trips, lead into the canyon itself.

The final leg of the tour, from Bryce to Cedar City, is an afternoon's ride, up over the summit of the Markagunt Plateau, stopping for a half hour to view the vast colorful amphitheatres of the Cedar Breaks, and then descending the narrow defile of rugged Cedar Canyon.

Throughout, in the arrangement of this tour, the Union Pacific has spared neither thought nor expense in providing the finest accommodations. Its motor-busses are of the most modern type. The lodges are fine examples of rustic beauty, built to hotel standards of comfort but without the conventional hotel atmosphere that would be so out of place in the midst of these scenic wonders. The roads are so smooth, so well kept, that they compare with those in any state in the Union.

*The Cedar Breaks*







*Great Fall and Grand Canyon of the Yellowstone*

## Yellowstone—Weird *and* Magnificent

*West Yellowstone,  
the Most Popular  
Entrance*

*One of the Greatest  
Wild-Life Refuges  
in the World*

Oldest, largest and probably the most famous of our National Parks, Yellowstone is associated with the colorful early history of the Union Pacific. E. H. Harriman himself took a keen interest in the building of the line which has become the most popular way to Yellowstone, terminating at West Yellowstone station, the only rail entrance directly on the Park boundary.

Parts of Yellowstone may well be called a manifestation of Nature in her lighter moods. There is a weird, almost "circus" quality to its hissing geysers, its steaming hot springs and to the churning, roaring, harmless mud volcanoes.

But this is only one of its aspects. Flung for more than half a hundred miles each way across the Rockies of Wyoming, Idaho and Montana, its natural wonders stand in a setting of mountain grandeur and forest loveliness.

No less striking is the abundance of wild life. Deer, elk, antelope and bison are common. As for





*First among the geysers of Yellowstone is Old Faithful, the most celebrated geyser in the world. Combining power, volume, beauty, and regularity, it approaches the geyser ideal, sending its graceful, spray-draped column skyward at intervals of from 60 to 80 minutes*





© Haynes

*One of the Citizens of Yellowstone*

### *The Motor Tours of Yellowstone*

bears, Yellowstone is so well known for its frisky bruins that they need hardly be mentioned.

The 4½-day motor tours of the Park are so arranged that the traveler spends a night and a part of a day at each of the four principal points of interest—Old Faithful, Lake Yellowstone, Grand Canyon and Mammoth Hot Springs. At each is a luxurious hotel and comfortable individual lodges.

At Old Faithful, the geysers are the chief attraction—and Old Faithful itself the center of interest. Almost clock-like in its regularity, every 60 to 80 minutes it sends skyward its powerful, graceful column of steam and water to a height of 150 feet and more. Several other great geysers in the near vicinity play at varying intervals.

Lake Yellowstone owes a part of its charm to its unique location. To the first-time visitor it comes as a distinct surprise to find here, at 8,000 feet elevation, one of the largest and loveliest lakes outside the Great Lakes basin.

For grandeur, majesty and color combined, no single spectacle in Yellowstone compares to Grand Canyon. Cleft 1,200 feet through a forested plateau,



*Grand Canyon and  
Great Falls,  
the Climax of  
Yellowstone*

its sharply-descending sides are tinted in a welter of glowing colors and carved and fretted in a thousand curious formations. Toward the southern end is magnificent Great Fall, twice the height of Niagara. The canyon may be seen from several observation points, easily reached.

Mammoth Hot Springs, headquarters of the Park administration, is famous for its terraced hot water springs. Laden with mineral, they have built up delicately sculptured cornices and basins that shimmer in a remarkable harmony of color.

Throughout Yellowstone, government rangers are stationed at each of the important centers to assist visitors in choosing walking, motor or horse-back trips. Employees of the hotels and lodges are recruited from colleges and universities; in the evenings, they regale the guests with songs and "stunts" of their own devising that leave a lasting memory of Yellowstone's hospitality.

The popularity of West Yellowstone as the entrance to the Park is not difficult to understand. Going by Union Pacific, Yellowstone visitors can stop at Denver and Salt Lake City, on the way, for no more rail fare.

*Colorado and  
Salt Lake City  
on the Way*

*Old Faithful Inn, Yellowstone National Park*







*Santa Barbara Mission, California*

## California—*the* All-Year Paradise

*California's Charms  
Are World-Famous*

Seldom in our national history has a state sprung so quickly from pioneer obscurity to world wide fame. Almost everyone these days knows *something* about California. It is a fitting tribute that four of the Union Pacific's finest trains are in California service: the Los Angeles Limited, San Francisco Overland Limited, Gold Coast Limited, Pacific Limited; splendid trains to a splendid state.

One does not have to look long for reasons for California's fame; it has everything that contributes to the renown of any famous region of the West: large cities, beautiful mountain and seacoast scenery, every form of outdoor recreation.

*Her Chief Glories  
Are Unlike Those of  
Any Other Region*

"Pshaw," you may say, "these are found anywhere west of the Rockies." But wait; you have heard only half the story. Where else can you find the giant sequoias and redwoods? . . . the glamorous atmosphere of Spanish missions? . . . the dream-tissue cities of the movie lots? . . . a year-round sub-tropical climate? . . . the weird beauty of the desert? — all in one state.





*Yosemite Falls, Yosemite National Park*





*Huntington Art Gallery, Near Los Angeles, California*

*A Choice of Two  
Routes by Which to  
Enter the State*

The traveler to California over the Union Pacific has a choice of two ways of entering the state: by the southern route, through Salt Lake City, down across Utah and a tip of Nevada, stopping, if desired, for a side trip to Zion, Bryce Canyon and Grand Canyon, and on to Los Angeles; by the central route, across an arm of Great Salt Lake, through the high Sierra, down to San Francisco. Either route is tremendously interesting.

*Los Angeles and the  
Attractions of  
Southern California*

Los Angeles, forty years ago a small town, is the largest city on the western half of the continent. In the surrounding area are a thousand diversions for the tourist. Between Los Angeles and the Pacific is Hollywood, where one may see the nation's movies in the making. To the southward, across rolling hills and through miles of citrus groves, is San Diego, city and harbor. Just across the border is the festive Mexican town of Tijuana. Off the coast from Los Angeles, lovely Catalina Island invites a day's outing by steamer. The beaches of Southern California are some of the finest on the Pacific.

Northward from Los Angeles, there is an almost unbroken succession of thriving cities and



*Yosemite, the  
Big Trees and the  
Cities of  
Northern California*

*Hawaii, "Paradise  
of the Pacific"*

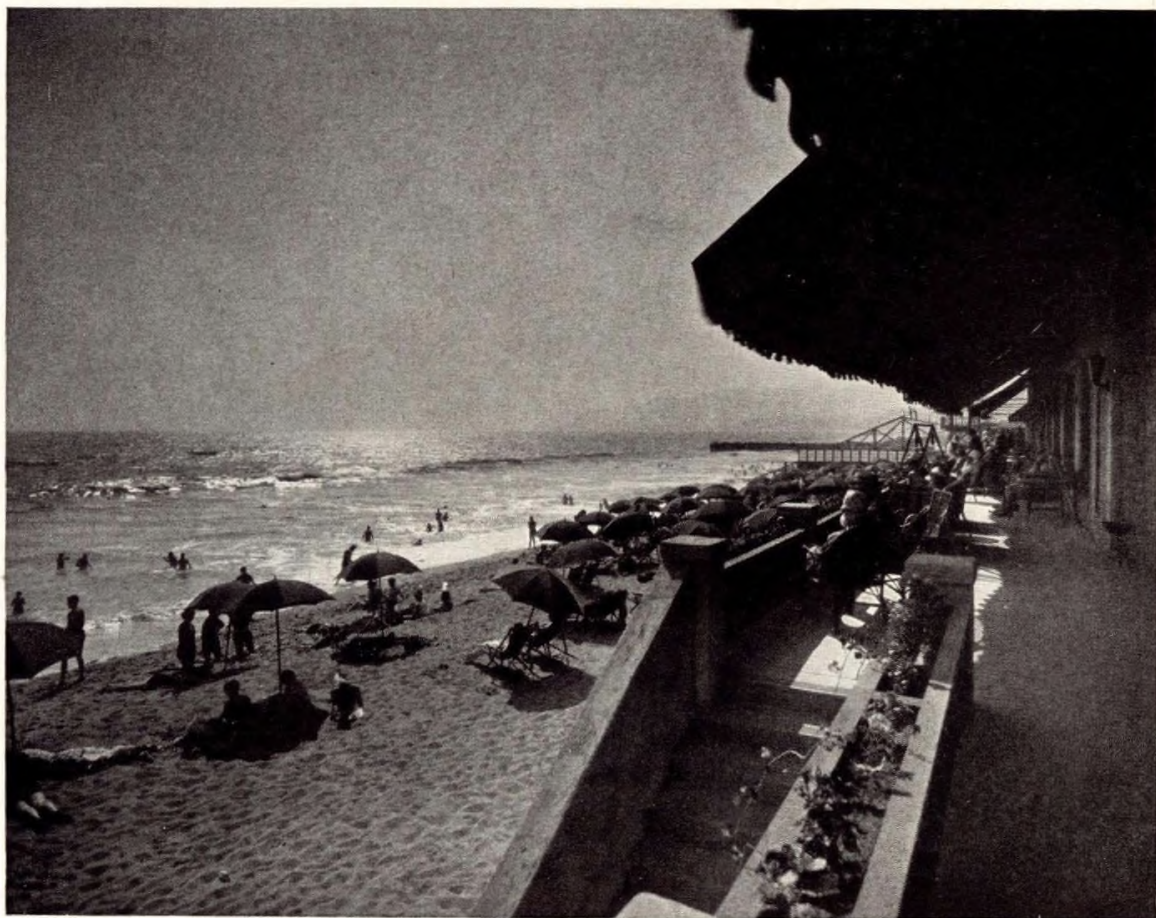
beach towns, all the way to San Francisco; rocky headlands and sheltered coves, broad beaches and wide bays have as a background the mountains and hills that parallel the coast.

Famed for its colorful history, San Francisco is no less famous as one of America's most beautiful and cosmopolitan cities. The races and nationalities of the world contribute to the brilliance of its polyglot population.

Northern California, of which San Francisco is the largest city, contributes lavishly to the sum of the visitor's enjoyment. Northward, toward Oregon, stretches the great belt of redwoods. Inland by a short journey lies Yosemite with its granite domes and feathery falls and its magnificent Big Trees. To the south of San Francisco are the groves of twisted cypress and the gay and charming resort towns of the Monterey Peninsula. To the east, across another arm of the bay, are the cities of Oakland, Berkeley and Alameda.

And, as a crowning enjoyment of a California vacation, the visitor can board ship at either San Francisco or Los Angeles for a trip to that sun-drenched land of tropic loveliness, Hawaii.

*On the Beach at Santa Monica, California*







*Longs Peak Trail, Rocky Mountain National Park*

## Colorado—Nearest *of the* Rockies

One of Colorado's distinctive characteristics is that more of it is tipped on end than lies flat. Many states have mountains as high, few so large a number and none so large a mountain area as easily explored. Railroads, highways and horseback and foot trails criss-cross the state in every direction.

In Colorado, the distance the vacation-seeker puts between himself and the rest of the world is limited only by his inclinations and the time at his disposal.

Denver is the most popular destination for Colorado visitors. A city of over 325,000 people, it is the natural gateway to the Colorado Rockies. Her mile-high location, her unique system of mountain parks and her cosmopolitan air, make Denver one of the most attractive cities of the West. It is one of the principal terminals of the Union Pacific and thousands of people, annually, take advantage of their privilege of visiting Denver, without extra rail fare, on their way over the Union Pacific to the

*Denver,  
the Metropolis of  
the Rockies*



*Rocky Mountain  
National Park*

Pacific Northwest, Yellowstone, California or Zion, Grand Canyon and Bryce Canyon National Parks.

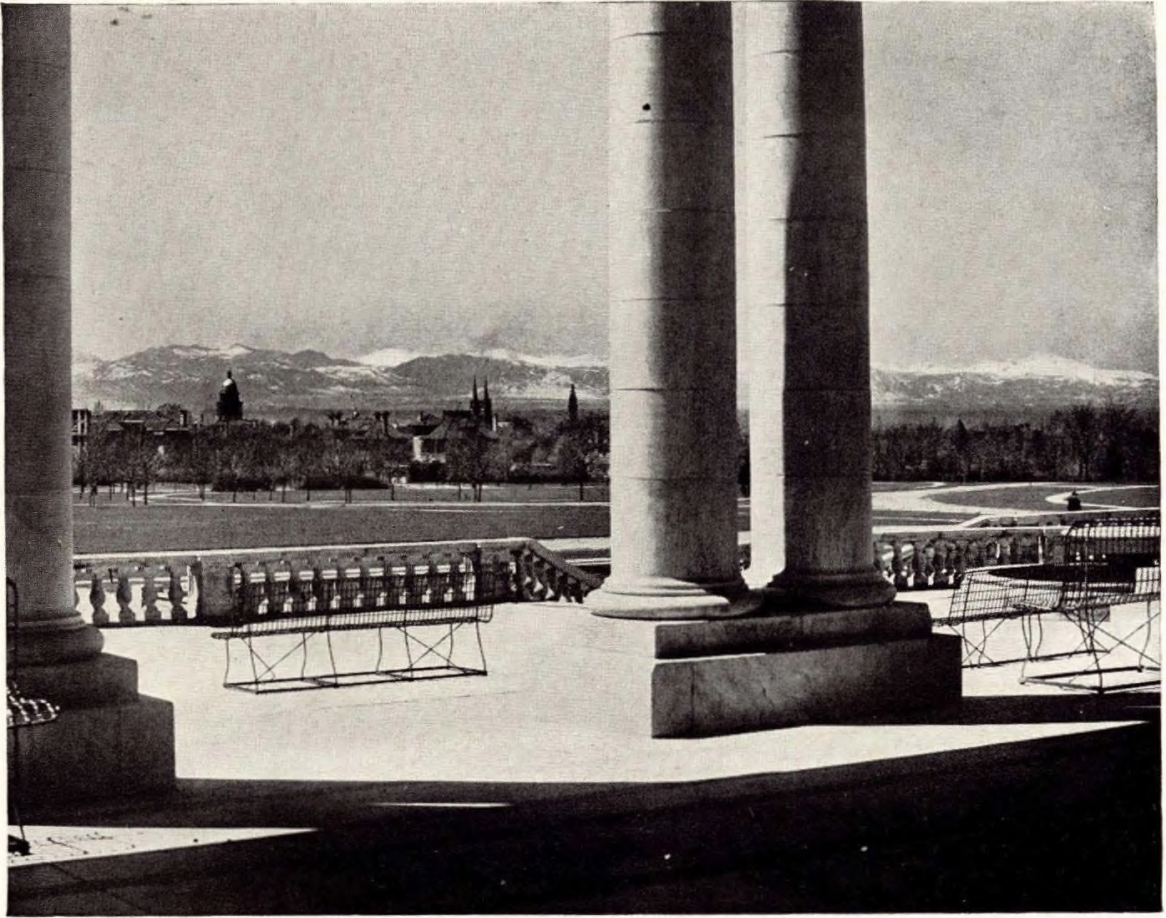
Of all the thousands of miles of vacation trips that radiate in every direction from Denver, probably the most popular is the tour of Rocky Mountain National Park. Fifty miles on an airline from Denver, the Park includes 397 square miles of some of the noblest mountain scenery found anywhere in the Rockies—or, for that matter, in the world. Every morning, during the summer, powerful motor-busses make their scheduled rounds of Denver hotels, picking up passengers for two, three or four-day tours of the Park. The Union Pacific also serves directly the towns of Greeley, Boulder and Ft. Collins, from which there is regular motor-bus service into the Park.

There are two principal ways of best seeing Colorado. One may come to Denver and spend one's vacation taking the numerous trips that start from the city, returning at the end of each day or two or three days. Or, one may go to one of the hundreds of resort centers that are scattered through the mountains, and from here explore the surrounding country.

*Yacht Racing on Grand Lake, Colorado*







*Looking Across Denver Toward the Rockies*

*There's Always  
Something to Do  
in Colorado*

For one who loves the tranquil grandeur of the mountains and life out-of-doors, Colorado is a veritable paradise. The easy trails over and among the glacier-capped Rockies are a silent invitation to the hiker, the horseman. The trout-filled lakes and streams have tempted many an angler to forget home and business. Summer nights are cool and dry; summer days are warm and sunny. Mountain-sides and valleys are carpeted with wild flowers, one of which, the columbine, Colorado's state flower, has provided a fitting name for the Union Pacific's finest train between Chicago and Denver.

With almost everyone, at one time or another, Pikes Peak has been a synonym for height and majestic grandeur, and the Colorado Springs region, with Pikes Peak as its dominant figure, is one of the most popular parts of Colorado.

The traveler has a wide choice of accommodations. Among Denver's 250 hotels one can always find the desired lodging. Colorado's resorts range from luxurious hotels with private golf courses, to tent and cabin camps tucked away in mountain valleys, whence the hardier visitors hie themselves to enjoy solitude.





*Along the Mighty Columbia River, Pacific Northwest*

## *The Vast, Evergreen Pacific Northwest*

*Canada and the  
United States Share  
the Pacific Northwest*

*Through Columbia's  
Rugged Gorge by  
Union Pacific*

Walled from north to south by the rugged Cascades, penetrated by the waters of Puget Sound, and by the mighty Columbia River, the Pacific Northwest comprises two states: Oregon, Washington—part of a third: Idaho—and one Canadian province: British Columbia.

But state and national boundaries mean little to the visitor. There are really only two parts to the Pacific Northwest—the coastal and inland sections, with the Cascades forming the division. Midway between north and south, the Columbia River cleaves a marvelous gorge through the mountains to the sea. It is through this gorge that travelers journey over the Union Pacific to Portland and, beyond, to Tacoma and Seattle.

This whole vast region is a playground, and "playtime" in the Pacific Northwest is from one year's end to the next. Even from such large cities as Portland, Tacoma, Seattle, Spokane, Victoria, and Vancouver, the limitless evergreen forests, the



*Hospitality Is  
Freely Given*

lakes and streams teeming with fish, and the Pacific beaches are but a short distance away. To the resident, recreation is as important as business; the business man is never too busy to lock his desk and spend a day or two with the visitor in prideful display of the natural wonders of his country.

Two national parks have been set aside: Rainier, its noble 14,000-foot summit rising 11,000 feet above forests and glaciers, and Crater Lake, an extinct volcanic crater within which is a lake of deepest blue; the former in the Cascades of Washington, the latter in the same range in Oregon.

*A Scenic Highway  
Parallels the  
Columbia*

First in attractiveness among the many scenic roads is the Columbia River Highway. It begins at Astoria, on the coast, extends eastward to Portland and on, through and beyond the Cascades; 337 miles of such scenery as is hardly found along any other highway in the world. It loops about high observation points, past innumerable spectacular waterfalls, through tunnels in the rock and on past the miles of wild beauty of the Columbia River Gorge. Below, above or alongside run the tracks of the Union Pacific, while handsome Union Pacific

*A Secluded Inlet of the Pacific Northwest*







*Mighty Mount Rainier, Rainier National Park*

*Spokane Is the  
Capital of the  
"Inland Empire"*

*Pacific Northwest  
Ports are Gateways  
to Alaska*

*Page Twenty*

motor-buses operate along the splendid Highway.

The inland section of the Pacific Northwest, with Spokane as its center, contains some of the most fertile grain land on earth. The visitor, however, is more interested in the beautiful mountain lakes that border it, their wild, unspoiled shores offered for his recreation.

The numerous mountain ranges of the Pacific Northwest—the Cascades, the Blue Mountains, the Siskiyou, the Wallowas, the Sawtooth and the wild Olympics—are heavily forested with several varieties of the pine and its relatives and the mountain valleys are carpeted with wild flowers. The mountain streams and lakes abound in game fish.

From any of the larger cities on lovely Puget Sound, or inland, the visitor to the Pacific Northwest will find more alluring excursions along the coast or into the interior than can be easily covered in one visit. That is why so many people return, year after year, with always-mounting enthusiasm.

From Pacific Northwest ports, it is only a brief journey, by steamer, to the stupendous grandeur of Alaska. Several steamship lines offer convenient and frequent sailings from American and Canadian ports.





*The Observation Car of a Union Pacific Limited Train*

## Travel Comfort—*an* Important Item

*Splendid Trains  
to the West*

If your vacation is begun with a tiresome journey, if you return home feeling as though you needed to "rest up," half the pleasure has been missed. To assure every passenger a thoroughly comfortable journey has been the aim in planning Union Pacific trains. Each comes as near as is humanly possible to being a "home on flying wheels." Every train offers superlative dining car service; the lounges and observation cars have nearly all the facilities of a metropolitan club. The two extra-fare trains, the Los Angeles Limited, the San Francisco Overland Limited, are examples of train luxury not surpassed anywhere. The Gold Coast Limited, Pacific Limited, Continental Limited, Portland Limited, Pacific Coast Limited and the Columbine are some of the fine no-extra-fare trains.

During the summer vacation season, eleven of these trains leave Chicago daily for the West; from St. Louis and Kansas City, three trains daily—all bound for Union Pacific vacation territory.



## Escorted Tours *of the West*

For those who prefer not to travel alone, who are unused to traveling, or who wish to have their vacation planned for a definite cost and time limit, the escorted, all-expense tours of the Union Pacific System and the Chicago and North Western Railway are an ideal arrangement.

All hotel and Pullman reservations are made in advance for the entire trip; a trained escort takes charge of all details of tickets, baggage and transportation; the exact cost is determined in advance and one payment covers everything.

These tours are operated every week from Chicago, during the summer. They range in length from eleven to twenty days, depending on how much of the West is covered.

For complete information, write to:

J. L. BURGAR, Manager  
148 South Clark St.  
Chicago, Ill.

or address any Union Pacific representative shown on the opposite page.

Fill Out and Mail the Coupon Below:

MR. C. J. COLLINS  
*General Passenger Agent*  
Union Pacific System  
Omaha, Nebraska

Dear Mr. Collins:

I am planning a Western vacation trip to.....

.....from.....about.....  
(City) (Date)

Please send me more information about the region I have checked below:

- ☐ Zion, Grand Canyon, Bryce Canyon National Parks
- ☐ Yellowstone National Park
- ☐ California
- ☐ Colorado
- ☐ Pacific Northwest and Alaska
- ☐ Dude Ranches Out West
- ☐ Hawaii Tours
- ☐ Death Valley
- ☐ I am interested in joining an escorted tour party.

Name.....

Address.....

City.....State.....



# Representatives of the Union Pacific System

Aberdeen, Wash.	3-4 Union Pass'r Sta., K and River Sts., F. E. STUDEBAKER, Dist. Freight and Pass'r Agt
Astoria, Ore.	Union Pacific System Wharf... G. W. ROBERTS, District Freight and Passenger Agent
Atlanta, Ga.	1232 Healey Building... W. C. ELGIN, General Agent
Bend, Ore.	E. H. McALLEN, Traveling Freight and Passenger Agent
Birmingham, Ala.	742 Brown-Marx Bldg., 1st Avenue and 20th Street... J. H. DOUGHTY, General Agent
Boise, Idaho	City Ticket Office, 823 Idaho Street... JOEL L. PRIEST, General Agent
Boston, Mass.	207-8 Old South Bldg., 294 Washington Street... WILLARD MASSEY, General Agent
Butte, Mont.	229 Rialto Bldg., 4 South Main Street... HENRY COULAM, General Agent
Cheyenne, Wyo.	Union Pacific Station... N. A. MILLER, Ticket Agent
Chicago, Ill.	City Ticket Office, 6 S. La Salle St., Otis Bldg., G. R. LEMMER, Gen'l Agt., Pass'r Dept.
Cincinnati, Ohio.	705-6 Dixie Terminal Bldg., Fourth and Walnut Streets, W. H. CONNOR, General Agent J. STANLEY ORR, District Passenger Agent
Cleveland, Ohio.	941 Union Trust Bldg., 925 Euclid Avenue... W. H. BENHAM, General Agent
Council Bluffs, Iowa	City Ticket Office, Chieftain Hotel, 36 Pearl Street... H. B. ELLER, City Ticket Agent
Dallas, Texas.	909 Magnolia Bldg., Commerce and Akard Streets... E. G. KOENEMAN, General Agent
Denver, Colo.	601 Seventeenth Street... I. W. CARTER, Assistant General Passenger Agent
Des Moines, Iowa	407 Equitable Bldg., Sixth and Locust Streets... F. P. STAFFORD, General Agent
Detroit, Mich.	508 Transportation Bldg., 131 Lafayette Blvd., West... A. R. MALCOLM, General Agent
Eugene, Ore.	Osburn Hotel... A. W. BAKER, Traveling Freight and Passenger Agent
Fort Collins, Colo.	Union Pacific Station... L. B. WHITEHEAD, Passenger and Ticket Agent
Fresno, Calif.	207-8 Rowell Bldg., Tulare St. and Van Ness Ave... T. F. BROSNAHAN, General Agent
Glendale, Calif.	129 South Brand Boulevard... C. A. REDMOND, General Agent
Hollywood, Calif.	City Ticket Office, 6732 Hollywood Blvd... H. W. HICKS, Gen'l Agent, Pass'r Dept.
Kansas City, Mo.	805 Walnut Street... SETH C. RHODES, General Agent, Passenger Department
Leavenworth, Kan.	Union Station, Main and Delaware Streets... A. E. MARTENY, General Agent
Lewiston, Idaho	224 Breier Building... H. J. BERGER, Traveling Freight and Passenger Agent
Lincoln, Neb.	City Ticket Office, 1308 N Street... A. D. GRANT, General Agent
Long Beach, Calif.	120 West Ocean Boulevard... R. W. SMOCK, General Agent
Los Angeles, Calif.	City Ticket Office, 732 South Broadway... J. CRUICKSHANK, Gen'l Agent, Pass'r Dept. A. T. JACKSON, District Passenger Agent
Milwaukee, Wis.	703 Straus Bldg., 230 Wisconsin Avenue... K. T. MINDEMANN, General Agent
Minneapolis, Minn.	618 Metropolitan Life Bldg., 125 South Third Street... E. H. HAWLEY, General Agent
New Orleans, La.	1001 New Orleans Bank Bldg., 226 Carondelet Street... R. A. PETERS, General Agent
New York, N. Y.	City Passenger Office, 205 Farmers' Loan & Trust Co. Bldg., 475 5th Avenue, J. B. DEFRIEST, General Agent H. A. LAWRENCE, District Passenger Agent
Oakland, Calif.	2001 Transportation Bldg., 225 Broadway... J. B. DEFRIEST, General Agent
Ogden, Utah	215 Central Bank Bldg., 436 14th Street... JAMES WARRACK, General Agent
Omaha, Neb.	214 David Eccles Bldg., 390 Twenty-fourth Street... C. L. MCKNIGHT, General Agent
Pasadena, Calif.	City Ticket Office, 1523 Farnam Street... L. BEINDORFF, Gen'l Agent, Pass'r Dept.
Philadelphia, Pa.	222 E. Colorado Street... C. F. FARMER, General Agent
Pittsburgh, Pa.	508 Commercial Trust Bldg., 15th and Market Streets... H. L. LAUBY, General Agent
Pomona, Calif.	216 Oliver Bldg., Smithfield Street and Sixth Avenue, JOHN D. CARTER, General Agent EDWARD EMERY, District Passenger Agent
Portland, Ore.	Union Pacific System Passenger Station, K. L. HANDY, Passenger and Freight Traffic Agt.
Redlands, Calif.	City Ticket Office, 341 Washington St., E. A. KLIPPEL, Jr., Gen'l Agent, Pass'r Dept.
Reno, Nev.	14 Cajon Street... L. C. FOWLER, Passenger and Freight Traffic Agent
Riverside, Calif.	200 Nevada State Life Bldg., Second and Center Streets... E. E. LARKIN, General Agent
Sacramento, Calif.	Glenwood Mission Inn, 680 Main Street... R. E. DRUMMY, General Agent
St. Joseph, Mo.	217 Forum Bldg., 9th & Kay Streets... C. T. SLAUSON, General Agent
St. Louis, Mo.	517 Francis St., LOUIS MOTTER, Gen'l Freight and Passenger Agt., St. J. and G. I. Ry.
Salt Lake City, Utah	203 Carleton Bldg., 308 North 6th Street... J. L. CARNEY, General Agent
San Diego, Calif.	City Ticket Office, Hotel Utah, Main and S. Temple Sts., E. A. SHEWE, Dist. Pass'r Agt.
San Francisco, Calif.	345 Plaza Street... C. C. JEWETT, General Agent
San Jose, Calif.	City Ticket Office, 673 Market Street... H. A. BUCK, District Passenger Agent
San Pedro, Calif.	501 1st Nat'l Bank Bldg., Santa Clara & First Streets, R. M. RITCHEY, General Agent
Santa Ana, Calif.	101 West Seventh Street... W. F. NASH, Jr., General Agent
Santa Monica, Calif.	305 North Main Street... W. A. SHOOK, General Agent
Sawtelle, Calif.	602 Santa Monica Boulevard... S. C. FROST, General Agent
Seattle, Wash.	1613 Sawtelle Boulevard... JOHN D. POST, Ticket Agent
Spokane, Wash.	201 Union Station, 4th Ave. & Jackson St., W. H. OLIN, Ass't Gen'l Frt. and Pass'r Agent
Tacoma, Wash.	City Ticket Office, 1403 Fourth Avenue, A. L. IVES, General Agent, Passenger Department
Toronto, Ontario	727 Sprague Avenue... T. J. DOWD, District Freight and Passenger Agent
Tulsa, Okla.	114 South Ninth Street... T. I. McGRATH, District Freight and Passenger Agent
Walla Walla, Wash.	201 Canadian Pacific Bldg., 69 Yonge Street... GEO. W. VAUX, General Agent
Whittier, Calif.	320 Kennedy Bldg., 319 South Boston Street... F. F. ROBINSON, General Agent
Yakima, Wash.	Baker Bldg., Main and Second Sts., J. H. CUNNINGHAM, District Frt. and Pass'r Agent
	Union Pacific System Passenger Station, G. B. KENNARD, City Freight and Pass'r Agent
	Union Pacific Bldg., 104 W. Yakima Ave., H. M. WEST, Dist. Freight and Pass'r Agent

## DEPARTMENT OF TOURS

(C. & N. W. Ry.—Union Pacific System)

**J. L. BURGAR, Manager**

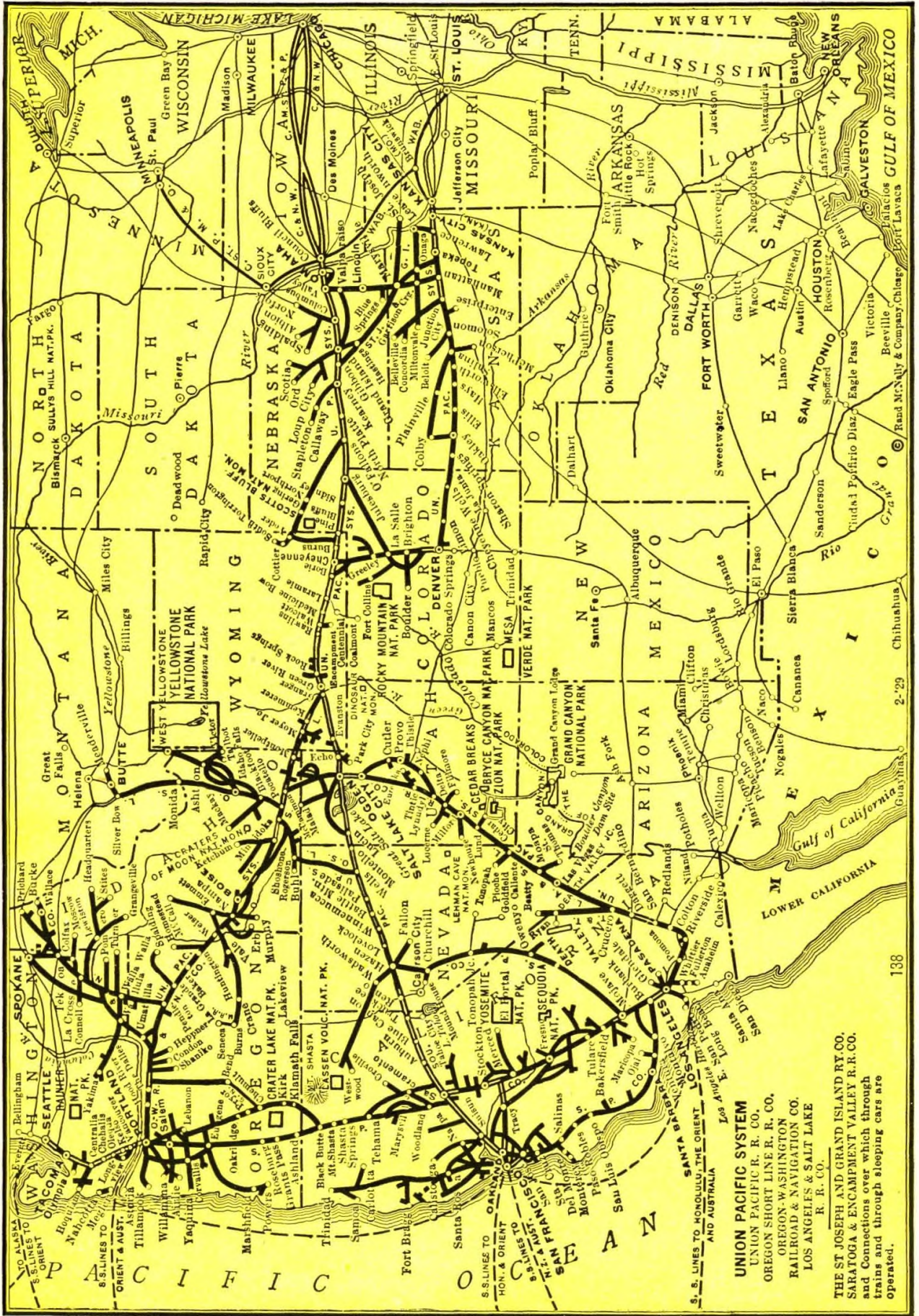
148 S. Clark St., Chicago, Ill.

<b>C. J. COLLINS</b> Gen'l Pass'r Agent OMAHA, NEB.	<b>D. S. SPENCER</b> Gen'l Pass'r Agent SALT LAKE CITY, UTAH	<b>W. K. CUNDIFF</b> Gen'l Pass'r Agent PORTLAND, ORE.	<b>GEO. R. BIERMAN</b> Gen'l Pass'r Agent LOS ANGELES, CALIF.
<b>JOHN L. AMOS</b> Asst. Traffic Mgr. Union Pacific Bldg. 10 South Main St. SALT LAKE CITY, UTAH	<b>A. S. EDMONDS</b> Asst. Traffic Mgr. Pittcock Block PORTLAND, ORE.	<b>R. B. ROBERTSON</b> Asst. Traffic Mgr. Pacific Electric Bldg. LOS ANGELES, CALIF.	<b>A. V. KIPP</b> Asst. Traffic Mgr. 415 Monadnock Bldg. 681 Market St. SAN FRANCISCO, CALIF.

**W. S. BASINGER**

Passenger Traffic Manager, OMAHA, NEB.





**UNION PACIFIC SYSTEM**  
UNION PACIFIC R. CO.  
OREGON SHORT LINE R. CO.  
OREGON-WASHINGTON  
RAILROAD & NAVIGATION CO.  
LOS ANGELES & SALT LAKE  
R. CO.

THE ST JOSEPH AND GRAND ISLAND RY. CO.  
SARATOGA & ENCAMPMENT VALLEY R.R. CO.  
and Connections over which through  
trains and through sleeping cars are  
operated.







