

BOOK OF TRAINS



UNION PACIFIC



Book of Trains



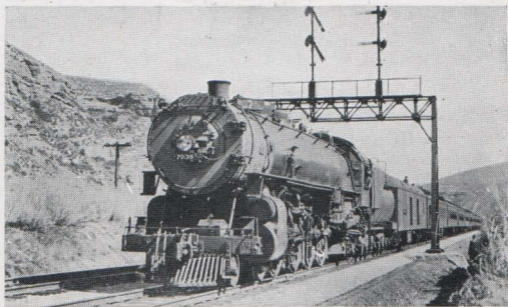
Fast Luxurious
Passenger Service
To and From
The West

UNION PACIFIC

The Los Angeles Limited

FOR years the Los Angeles Limited was an extra-fare train. On June 9, 1929, the extra fare charge was discontinued—but no change was made in the quality of the train. It's still an all-Pullman flyer, still one of the fastest, finest trains between Chicago and Los Angeles, still the choice of travel-wise people who prefer the scenic, historically interesting route to Southern California.

A trip to California is an event in anyone's life. The Los Angeles Limited, perfectly appointed from locomotive to observation car, provides the ideal setting.



Los Angeles Limited in Echo Canyon

The Los Angeles Limited

Train Conveniences: Luxurious club-observation-lounge car, with soda fountain service; maid service, barber, valet and shower bath; standard Pullmans with choice of drawing-room, compartment or individual berths; the finest of dining car service between Chicago and Los Angeles.

Train Schedules:

WESTBOUND
READ DOWN
NUMBER 7

Sun.	8:10 PM	Lv Chicago (C&NW)...	Ar	9:20 AM	Wed.
Mon.	8:45 AM	Lv Omaha (UP).....	Ar	8:35 PM	Tue.
Mon.	7:55 PM	Lv Cheyenne.....	Lv	8:30 AM	Tue.
Tue.	10:35 AM	Ar Salt Lake City.....	Lv	5:45 PM	Mon.
Wed.	9:10 AM	Ar Los Angeles.....	Lv	6:05 PM	Sun.
Wed.	10:25 AM	Ar Long Beach.....	Lv	4:25 PM	Sun.

EASTBOUND
READ UP
NUMBER 8

Connecting Trains

from St. Louis-Kansas City:

WESTBOUND
READ DOWN
NUMBER 22-127-8

Sun.	2:00 PM	Lv St. Louis (Wab)...	Ar	4:20 PM	Wed.
Sun.	10:00 PM	Lv Kansas City (UP)...	Ar	8:15 AM	Wed.
Mon.	4:30 PM	Lv Denver.....	Ar	11:50 AM	Tue.
Tue.	10:35 AM	Ar Salt Lake City.....	Lv	5:45 PM	Mon.
Wed.	9:10 AM	Ar Los Angeles.....	Lv	6:05 PM	Sun.
Wed.	10:25 AM	Ar Long Beach.....	Lv	4:25 PM	Sun.

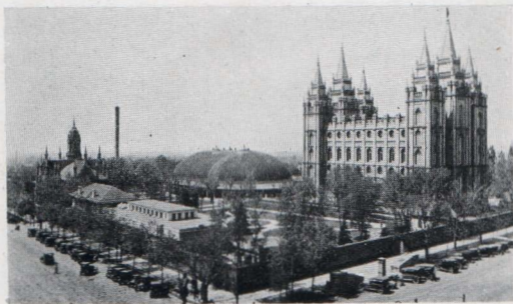
EASTBOUND
READ UP
NUMBER 8-108-22

Through connections at Denver.

The Continental Limited

A LATE evening departure, westbound from Chicago, is particularly convenient for eastern travelers arriving on morning trains. Leaving at 11:20 PM, the Continental Limited allows time in Chicago for visiting, shopping, or for an evening at the theatre. Pullmans are ready for occupancy at 10:00 PM.

For those who prefer more economical accommodations, the Continental Limited also offers tourist sleeping cars between Chicago and Los Angeles, on which the berth charge is slightly more than half the cost of that in the standard Pullmans.



Temple Square, Salt Lake City

The Continental Limited

Train Conveniences: Observation car; standard Pullmans with choice of drawing-room, compartment and lower or upper berth accommodations. Tourist sleeping car between Chicago and Los Angeles; comfortable chair cars and famous Overland Route dining car service for all meals.

Train Schedules:

WESTBOUND			EASTBOUND		
READ DOWN			READ UP		
NUMBER 19			NUMBER 20		
Sun.	11:20 PM	Lv Chicago (C&NW).. Ar	7:40 AM	Wed.	
Mon.	12:55 PM	Lv Omaha (UP)..... Ar	5:40 PM	Tue.	
Tue.	1:25 AM	Lv Cheyenne..... Lv	4:15 AM	Tue.	
Tue.	5:35 PM	Lv Salt Lake City..... Lv	12:35 PM	Mon.	
Wed.	5:30 PM	Ar Los Angeles..... Lv	9:40 AM	Sun.	

Connecting Trains

from St. Louis-Kansas City:

WESTBOUND			EASTBOUND		
READ DOWN			READ UP		
NUMBER 21-119-19			NUMBER 20-120-22		
Sun.	2:00 PM	Lv St. Louis (Wab)... Ar	4:20 PM	Wed.	
Sun.	10:00 PM	Lv Kansas City (UP).. Ar	8:15 AM	Wed.	
Mon.	7:00 PM	Lv Denver..... Ar	10:00 AM	Tue.	
Tue.	5:15 PM	Ar Salt Lake City..... Lv	12:35 PM	Mon.	
Wed.	5:30 PM	Ar Los Angeles..... Lv	9:40 AM	Sun.	

Through connections at Denver.

Gold Coast Limited

PACIFIC COAST LIMITED

TO those in search of additional interest on a trip to Southern California, the Gold Coast Limited offers a unique experience—that of crossing the Mojave Desert by night. In the brilliant California moonlight the desert expanse stands out sharply, impressively, with an unearthly beauty. On starlit nights the shadowy waste takes on an added mystery and charm that will never be forgotten.

The Gold Coast Limited also carries tourist sleeping cars between Chicago and Los Angeles, in addition to the regular standard Pullmans.



Great White Throne, Zion National Park

Gold Coast Limited

PACIFIC COAST LIMITED

Train Conveniences: Separate club-observation car; standard Pullmans and tourist sleeping cars; Overland Route dining car service; chair cars. Early morning arrival in Los Angeles.

GOLD COAST LIMITED

Train Schedules:

WESTBOUND			EASTBOUND		
READ DOWN			READ UP		
NUMBER 25-21			NUMBER 22-26		
Sun.	2:30 PM	Lv Chicago (C&NW)..Ar	4:30 PM	Wed.	
Mon.	3:20 AM	Ar Omaha.....Lv	3:00 AM	Wed.	
Mon.	3:45 AM	Lv Omaha (UP).....Ar	2:30 AM	Wed.	
Mon.	3:55 PM	Lv Cheyenne.....Lv	1:15 PM	Tue.	
Tue.	8:15 AM	Lv Salt Lake City.....Lv	9:10 PM	Mon.	
Wed.	8:30 AM	Ar Los Angeles.....Lv	7:30 PM	Sun.	

PACIFIC COAST LIMITED

Connecting Trains

from St. Louis-Kansas City:

WESTBOUND			EASTBOUND		
READ DOWN			READ UP		
NUMBER 21			NUMBER 22		
Sun.	2:00 PM	Lv St. Louis (Wab)...Ar	4:20 PM	Wed.	
Sun.	10:00 PM	Lv Kansas City (UP)..Ar	8:15 AM	Wed.	
Mon.	1:45 PM	Lv Denver.....Ar	2:20 PM	Tue.	
Tue.	8:15 AM	Lv Salt Lake City.....Lv	9:10 PM	Mon.	
Wed.	8:30 AM	Ar Los Angeles.....Lv	7:30 PM	Sun.	

Through Pullmans between St. Louis and Los Angeles.

The Overland Limited

(EXTRA FARE)

EVERY form of transportation has its ultimate in luxury. Just as there is only one *Leviathan*, only one Rolls-Royce, so there is only one Overland Limited. From the ease-inviting club car forward, through the especially-built Pullmans and the perfectly appointed dining car, to the luxurious observation car at the rear, the Overland Limited carries an air of distinction that places it among the leaders of America's fine trains.

It is the fastest train over the shortest route between Chicago and San Francisco.



Overland Limited Observation Car

The Overland Limited

(EXTRA FARE)

Train Conveniences: All-Pullman, extra-fare train; club car, observation sleeping car; especially-built Pullmans, including one all-room car (drawing-rooms and compartments only). Maid, barber and valet service; shower bath. The finest of Overland Route dining car service. Ten dollars extra fare.

Train Schedules:

WESTBOUND	EASTBOUND
READ DOWN	READ UP
NUMBER 1	NUMBER 2
Sun. 11:50 AM Lv Chicago (C&NW).. Ar	9:40 AM Wed.
Mon. 12:05 AM Lv Omaha (UP)..... Ar	9:25 PM Tue.
Mon. 10:53 PM Ar Ogden..... Lv	9:05 PM Mon.
Tue. 4:40 PM Ar Sacramento (SP)... Lv	1:00 AM Mon.
Tue. 7:50 PM Ar San Francisco..... Lv	9:40 PM Sun.

Connecting Trains

from St. Louis-Kansas City via Omaha:

WESTBOUND	EASTBOUND
READ DOWN	READ UP
Sat. 11:59 PM Lv St. Louis..... Ar	3:20 PM Wed.
Sun. 8:35 AM Lv Kansas City..... Ar	7:25 AM Wed.
Sun. 3:30 PM Ar Omaha..... Lv	11:45 PM Tue.
Mon. 12:05 AM Lv Omaha (UP)..... Ar	9:25 PM Tue.
Mon. 10:53 PM Ar Ogden..... Lv	9:05 PM Mon.
Tue. 7:50 PM Ar San Francisco (SP). Lv	9:40 PM Sun.

San Francisco Limited

IN speed of travel and in luxurious appointments, only one train between Chicago and San Francisco surpasses the San Francisco Limited—and that one is the extra-fare flyer described on pages 8 and 9.

An all-Pullman train, in service since June 9, 1929, it operates on a fast schedule formerly equalled only by the Overland Limited—but the San Francisco Limited is not an extra-fare train. Leaving Chicago and San Francisco at convenient evening hours, it arrives at its destination in time for a full day of business or pleasure.



A Glimpse of Bryce Canyon National Park

San Francisco Limited

Train Conveniences: Luxurious club-observation car; maid service, valet, barber and shower bath. Standard Pullmans, including one all-room car (drawing-rooms and compartments only). Overland Route dining car service. No extra fare.

Train Schedules:

WESTBOUND	EASTBOUND
READ DOWN	READ UP
NUMBER 27	NUMBER 28
Sun. 8:20 PM Lv Chicago (C&NW)..Ar	9:15 AM Wed.
Mon. 8:55 AM Lv Omaha (UP).....Ar	8:25 PM Tue.
Tue. 10:10 AM Ar Ogden.....Lv	6:50 PM Mon.
Wed. 5:30 AM Ar Sacramento (SP)...Lv	9:30 PM Sun.
Wed. 9:10 AM Ar San Francisco.....Lv	6:00 PM Sun.

Connecting Trains

from St. Louis-Kansas City:

WESTBOUND	EASTBOUND
READ DOWN	READ UP
NUMBER 21-127-27	NUMBER 28-108-22
Sun. 2:00 PM Lv St. Louis (Wab)...Ar	4:20 PM Wed.
Sun. 10:00 PM Lv Kansas City (UP)..Ar	8:15 AM Wed.
Mon. 4:30 PM Lv Denver.....Ar	11:50 AM Tue.
Mon. 8:05 PM Lv Cheyenne.....Ar	8:05 AM Tue.
Tue. 10:10 AM Ar Ogden.....Lv	6:50 PM Mon.
Wed. 9:10 AM Ar San Francisco (SP).Lv	6:00 PM Sun.

Through connections at Cheyenne.

The Pacific Limited

LEAVING Chicago at 11:30 PM, the fine Pacific Limited offers San Francisco-bound travelers the convenience of an evening in Chicago. In addition, it departs from the Chicago Union Station. For that reason, travelers from some eastern trains need not transfer to or from another station.

Eastbound, the Pacific Limited arrives at Chicago Union Station in time for a full business day, or for connections with morning trains to the east. Choice of standard or tourist sleeping cars between Chicago and San Francisco.



On the Enchanting Bay of Monterey, California

The Pacific Limited

Train Conveniences: Observation sleeping car; standard Pullmans with choice of drawing-room, compartment and berth accommodations. Tourist sleeping car between Chicago and San Francisco; coaches. Overland Route dining car service.

Train Schedules:

WESTBOUND			EASTBOUND		
READ DOWN			READ UP		
NUMBER 19			NUMBER 20		
Sun.	11:30 PM	Lv Chicago (CMStP&P) Ar	7:40 AM	Wed.	
Mon.	12:55 PM	Lv Omaha (UP) Ar	5:40 PM	Tue.	
Tue.	1:10 AM	Ar Cheyenne Lv	4:15 AM	Tue.	
Tue.	4:00 PM	Ar Ogden Lv	1:50 PM	Mon.	
Wed.	1:55 PM	Ar Sacramento Lv	2:45 PM	Sun.	
Wed.	5:30 PM	Ar San Francisco (SP) . Lv	11:00 AM	Sun.	

Connecting Trains

from St. Louis-Kansas City:

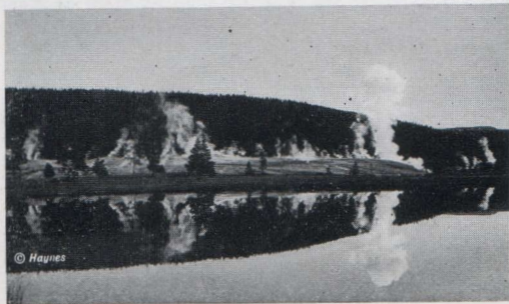
WESTBOUND			EASTBOUND		
READ DOWN			READ UP		
NUMBER 21-119-19			NUMBER 20-120-22		
Sun.	2:00 PM	Lv St. Louis (Wab) . . . Ar	4:20 PM	Wed.	
Sun.	10:00 PM	Lv Kansas City (UP) . . Ar	8:15 AM	Wed.	
Mon.	7:00 PM	Lv Denver Ar	10:00 AM	Tue.	
Tue.	1:25 AM	Lv Cheyenne Lv	6:45 AM	Tue.	
Tue.	4:00 PM	Ar Ogden Lv	1:50 PM	Mon.	
Wed.	5:30 PM	Ar San Francisco Lv	11:00 AM	Sun.	

Through connections at Denver.

Gold Coast Limited

THERE are occasions when quick connections are necessary, when the first train is the most desirable one. For travelers arriving in Chicago on morning, noon, or early-afternoon trains, the Gold Coast Limited is the first available no-extra-fare train to San Francisco.

With its choice of tourist or standard sleeping-car accommodations, and its morning arrival in San Francisco in time for business, it is particularly convenient for those whose time is limited and who wish to make the trip without payment of extra fare.



Upper Geyser Basin, Yellowstone National Park

Gold Coast Limited

Train Conveniences: Separate club-observation car; choice of accommodations in standard or tourist sleeping cars between Chicago and San Francisco; chair cars; pleasing dining car service.

Train Schedules:

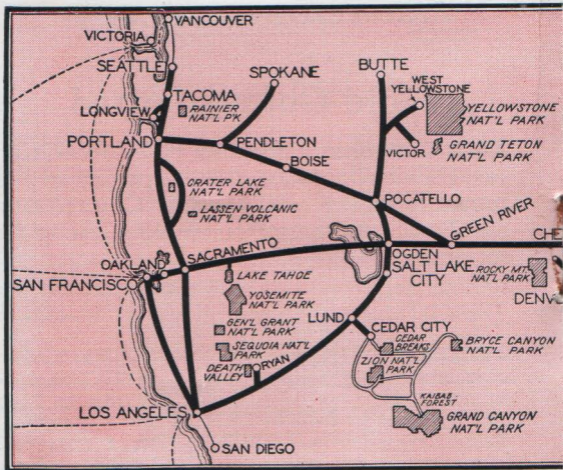
WESTBOUND			EASTBOUND		
READ DOWN			READ UP		
NUMBER 25-21			NUMBER 22-26		
Sun.	2:30 PM	Lv Chicago (C&NW) .. Ar	4:30 PM	Wed.	
Mon.	3:45 AM	Lv Omaha (UP)	Ar	2:30 AM	Wed.
Mon.	3:40 PM	Ar Cheyenne	Lv	1:15 PM	Tue.
Tue.	6:20 AM	Ar Ogden	Lv	10:40 PM	Mon.
Wed.	4:50 AM	Ar Sacramento (SP) ...	Lv	10:55 PM	Sun.
Wed.	8:30 AM	Ar San Francisco	Lv	7:00 PM	Sun.

Connecting Trains

from St. Louis-Kansas City:

WESTBOUND			EASTBOUND		
READ DOWN			READ UP		
NUMBER 21			NUMBER 22		
Sun.	2:00 PM	Lv St. Louis (Wab)	Ar	4:20 PM	Wed.
Sun.	10:00 PM	Lv Kansas City (UP) ..	Ar	8:15 AM	Wed.
Mon.	1:45 PM	Lv Denver	Ar	2:20 PM	Tue.
Via Borie		Lv Cheyenne	Lv	Via Borie	
Tue.	6:25 AM	Ar Ogden	Lv	10:35 PM	Mon.
Wed.	8:30 AM	Ar San Francisco (SP) ..	Lv	7:00 PM	Sun.

Through service between St. Louis and San Francisco.

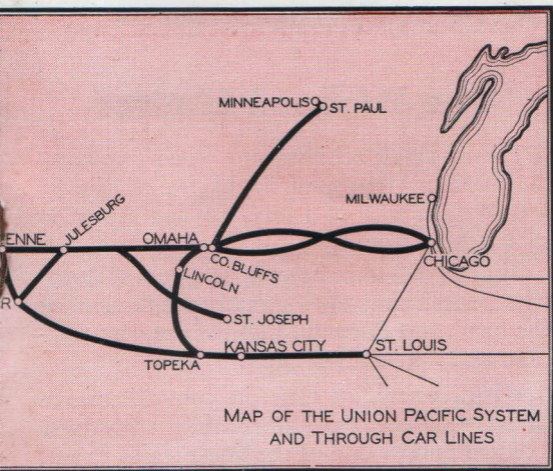


Who Selects Your Route

THE transcontinental journey takes from 2½ to 3 days. The train you choose and the route it follows are so important to your comfort and enjoyment that the selection should be carefully made.

The splendid trains of the Overland Route are described in this booklet. To call the route of these trains "interesting" does it scant justice. From the fertile plains of the Middle West, through the majestic Rockies and high Sierras, down to the golden valleys and Pacific beaches of California, Oregon and

Use the Coupon on Page 31 for Reservations



ate for a Western Trip?

Washington, it presents a moving panorama of the outstanding scenic splendors of the West.

The Overland Route was discovered long before Union Pacific rails were laid. Because it was the shortest, most direct way to the West, it was the path of the Indian, the gold-seeker, Overland stage coach and Pony Express. More recently, its advantages have again been recognized, as both the Lincoln Highway and the airmail parallel it to the Pacific Coast.

ervations on Any Union Pacific Train

Only Through Chicago-Portland Train

The Portland Limited

IT is no small achievement when two communities, separated by half a continent, are brought half of a business day closer to each other.

That is what happened on June 9, 1929, when the Union Pacific reduced the time of the handsome Portland Limited between Chicago and Portland, Oregon.

With its new fast time, its conveniences of barber and maid, valet and bath, the Portland Limited is now one of the finest trains to and from the Pacific Northwest—and the only through train between Chicago and Portland.



Portland Limited in Columbia River Gorge

The Portland Limited

Train Conveniences: Separate club-observation car. Maid, manicure and hair-dressing service; barber and valet; shower bath. Through Pullmans between Chicago and Portland, Tacoma, Seattle; also coaches. Overland Route dining car service. Open-top observation car through scenic Columbia River Gorge during summer season.

Train Schedules:

WESTBOUND			EASTBOUND		
READ DOWN			READ UP		
NUMBER 17			NUMBER 18		
Sun.	8:30 PM	Lv Chicago (C&NW)...	Ar	9:25 AM	Wed.
Mon.	9:05 AM	Lv Omaha (UP).....	Ar	8:45 PM	Tue.
Wed.	9:30 AM	Ar Portland.....	Lv	6:10 PM	Sun.
Wed.	3:30 PM	Ar Tacoma.....	Lv	12:35 PM	Sun.
Wed.	5:00 PM	Ar Seattle.....	Lv	11:10 AM	Sun.

Connecting Trains from St. Louis-Kansas City:

WESTBOUND			EASTBOUND		
READ DOWN			READ UP		
NUMBER 22-127-17			NUMBER 18-108-22		
Sun.	2:00 PM	Lv St. Louis (Wab)...	Ar	4:20 PM	Wed.
Sun.	10:00 PM	Lv Kansas City (UP)...	Ar	8:15 AM	Wed.
Mon.	4:30 PM	Lv Denver.....	Ar	11:50 AM	Tue.
Wed.	9:30 AM	Ar Portland.....	Lv	6:10 PM	Sun.
Wed.	3:30 PM	Ar Tacoma.....	Lv	12:35 PM	Sun.
Wed.	5:00 PM	Ar Seattle.....	Lv	11:10 AM	Sun.

Through sleeping cars between St. Louis and Portland. Tacoma and Seattle passengers transfer enroute to sleepers for those points.

The Continental Limited

THE builders of the Union Pacific planned for beauty as well as for utility. For nearly 200 miles, its Pacific Northwest line runs along the stately Columbia River and through its tremendous gorge. Thus, one of the Northwest's greatest scenic glories can be seen from one's seat in the train.

The Continental Limited traverses this region entirely by daylight. During the summer, this train, like the Portland Limited, carries a comfortable open-top observation car on the trip through the Columbia River Gorge, between The Dalles and Portland.



© Gifford Scenic Studio

The Columbia River Gorge, Oregon



The Continental Limited

Train Conveniences: Observation sleeping car; choice of standard or tourist Pullmans. Open-top observation car through Columbia Gorge during summer season. Through Pullmans between Chicago and Seattle. Overland Route dining car service.

Train Schedules:

WESTBOUND			EASTBOUND		
READ DOWN			READ UP		
NUMBER 19			NUMBER 20		
Sun.	11:20 PM	Lv Chicago (C&NW) .. Ar	7:40 AM	Wed.	
Mon.	12:55 PM	Lv Omaha (UP)..... Ar	5:40 PM	Tue.	
Wed.	5:30 PM	Ar Portland.....Lv	9:40 AM	Sun.	
Thu.	4:50 AM	Ar Tacoma.....Lv	12:40 AM	Sun.	
Thu.	6:30 AM	Ar Seattle.....Lv	11:15 PM	Sat.	

Connecting Trains

from St. Louis-Kansas City:

WESTBOUND			EASTBOUND		
READ DOWN			READ UP		
NUMBER 21-119-19			NUMBER 20-120-22		
Sun.	2:00 PM	Lv St. Louis (Wab)... Ar	4:20 PM	Wed.	
Sun.	10:00 PM	Lv Kansas City (UP).. Ar	8:15 AM	Wed.	
Mon.	7:00 PM	Lv Denver..... Ar	10:00 AM	Tue.	
Wed.	5:30 PM	Ar Portland.....Lv	9:40 AM	Sun.	
Thu.	4:50 AM	Ar Tacoma.....Lv	12:40 AM	Sun.	
Thu.	6:30 AM	Ar Seattle.....Lv	11:15 PM	Sat.	

Through connections at Denver.

The Columbine

AS a symbol for a beautiful and picturesque state, Colorado chose the exquisite blue-and-white columbine as its state flower. In its honor, the Union Pacific named its finest Colorado train "The Columbine."

Chief among its exceptionally luxurious appointments is the Limousine Lounge Car. Finer than the ordinary observation car, it has a glass-enclosed rear-platform lounge with high, wide windows and comfortable leather-upholstered chairs of cool green wicker. Separate women's lounge room; soda fountain-buffet service.



Men's Lounge on the Columbine

The Columbine

Train Conveniences: Limousine-lounge observation car (valet service and buffet-soda fountain); standard Pullmans; special coaches with adjustable high-back seats; dining car serving "*Meals that Appeal.*" The Limousine-lounge car is a luxurious combination of men's club, women's lounge, library and limousine-observation parlor.

Train Schedules:

WESTBOUND

READ DOWN

NUMBER 13

Sun.	10:30 AM	Lv Chicago (C&NW)...	Ar	7:45 PM	Mon.
Sun.	11:30 PM	Ar Omaha.....	Lv	6:45 AM	Mon.
Mon.	12:06 AM	Lv Omaha (UP).....	Ar	6:30 AM	Mon.
Mon.	3:25 AM	Lv Grand Island.....	Lv	3:10 AM	Mon.
Mon.	6:40 AM	Ar North Platte.....	Lv	11:55 PM	Sun.
Mon.	9:37 AM	Ar Sterling.....	Lv	7:15 PM	Sun.
Mon.	1:10 PM	Ar Denver.....	Lv	3:45 PM	Sun.

EASTBOUND

READ UP

NUMBER 12

From St. Louis-Kansas City
—Pacific Coast Limited:

WESTBOUND

READ DOWN

NUMBER 21

Sun.	2:00 PM	Lv St. Louis (Wab)....	Ar	4:20 PM	Mon.
Sun.	9:30 PM	Ar Kansas City.....	Lv	9:00 AM	Mon.
Sun.	10:00 PM	Lv Kansas City (UP)..	Ar	8:15 AM	Mon.
Sun.	11:28 PM	Lv Topeka.....	Lv	6:20 AM	Mon.
Mon.	2:15 AM	Lv Salina.....	Lv	3:00 AM	Mon.
Mon.	1:00 PM	Ar Denver.....	Lv	3:00 PM	Sun.

EASTBOUND

READ UP

NUMBER 22

The Denver Special

EACH year Colorado grows more popular as a summer vacation land. Each year, to meet this increase of travel to the Colorado Rockies, the Union Pacific operates a summer train—the Denver Special.

This year, the Denver Special should be more popular than ever before. Its time from Chicago to Denver has been reduced two hours—from Denver to Chicago two and one-half hours. Its schedule between the two cities is the fastest of the three Chicago-Denver trains—25½ hours westbound, 25 hours eastbound. Only one night en route.



In Rocky Mountain National Park

The Denver Special

Train Conveniences: Observation car service; standard Pullman sleeping cars with choice of drawing-room, compartment, upper or lower berth accommodations. “*Meals that Appeal*” served in the dining car.

Train Schedules:

WESTBOUND			EASTBOUND		
READ DOWN			READ UP		
NUMBER 117			NUMBER 118		
Sun.	8:30 PM	Lv Chicago (C&NW) .. Ar	9:25 AM	Mon.	
Mon.	8:45 AM	Ar Omaha	Lv	9:10 PM	Sun.
Mon.	9:05 AM	Lv Omaha (UP)	Ar	8:45 PM	Sun.
Mon.	12:10 PM	Lv Grand Island	Lv	5:50 PM	Sun.
Mon.	3:15 PM	Ar North Platte	Lv	2:50 PM	Sun.
Mon.	5:30 PM	Ar Sterling	Lv	10:40 AM	Sun.
Mon.	8:59 PM	Ar Denver	Lv	7:30 AM	Sun.

From St. Louis-Kansas City

—St. Louis-Colorado Limited:

WESTBOUND			EASTBOUND		
READ DOWN			READ UP		
NUMBER 101			NUMBER 128		
Sun.	9:03 AM	Lv St. Louis (Wab) Ar	9:00 PM	Mon.	
Sun.	4:33 PM	Ar Kansas City	Lv	1:30 PM	Mon.
Sun.	6:15 PM	Lv Kansas City (UP) .. Ar	12:45 PM	Mon.	
Sun.	7:45 PM	Lv Topeka	Lv	10:40 AM	Mon.
Sun.	10:50 PM	Lv Salina	Lv	7:15 AM	Mon.
Mon	9:15 AM	Ar Denver	Lv	7:30 PM	Sun.

The Colorado Express

MORNING in the Rockies! snow-capped peaks flashing in the early sun bracing, tingling air Denver nestling quietly on the foothills, just awakening for another day of bustling activity that makes it one of the most cosmopolitan cities in the West.

That's the traveler's first impression as he steps from the Colorado Express, into the cool of an early Colorado morning.

A midnight departure from Chicago, an early-morning arrival in Denver, are very convenient for the leisure-bent tourist.



Women's Lounge on the Columbine

The Colorado Express

Train Conveniences: Separate club-observation car; standard Pullman sleeping cars with all choices of standard accommodations. Chair cars between Chicago and Denver; coaches between Omaha and Denver. Dining car serving those "*Meals that Appeal.*"

Train Schedules:

WESTBOUND READ DOWN NUMBER 15	EASTBOUND READ UP NUMBER 16
Sun. 11:59 PM Lv Chicago (C&NW) . . . Ar	7:00 AM Tue.
Mon. 3:21 PM Ar Omaha Lv	3:45 PM Mon.
Mon. 4:25 PM Lv Omaha (UP) Ar	3:25 PM Mon.
Mon. 8:45 PM Lv Grand Island Lv	11:45 AM Mon.
Tue. 12:25 AM Ar North Platte Lv	8:10 AM Mon.
Tue. 3:25 AM Ar Sterling Lv	3:05 AM Mon.
Tue. 7:15 AM Ar Denver Lv	11:30 PM Sun.

From St. Louis-Kansas City

—*Denver Express; Kansas City Express:*

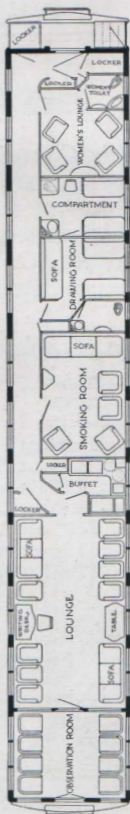
WESTBOUND READ DOWN NUMBER 103	EASTBOUND READ UP NUMBER 104
Sun. 10:02 PM Lv St. Louis (Wab) Ar	7:30 AM Tue.
Mon. 7:30 AM Ar Kansas City Lv	11:55 PM Mon.
Mon. 10:40 AM Lv Kansas City (UP) . . . Ar	4:10 PM Mon.
Mon. 12:40 PM Lv Topeka Lv	2:15 PM Mon.
Mon. 4:55 PM Lv Salina Lv	10:40 AM Mon.
Tue. 7:00 AM Ar Denver Lv	10:00 PM Sun.



Twelve-Section, One-Drawing-Room Sleeping Car

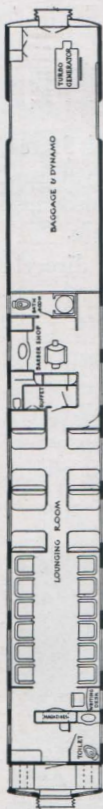


Ten-Section, One-Drawing-Room, Two-Compartment Sleeping Car



Limousine-Lounge Observation Car—One Compartment—One Drawing-Room

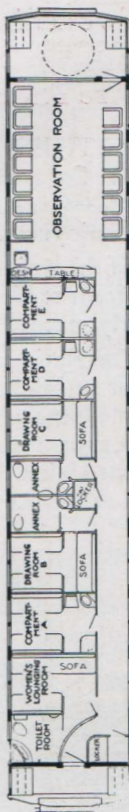
*Diagrams of Standard Pullmans and Limousine-Lounge Cars
on Union Pacific Trains*



Club-Lounge Car



Library-Observation Car



Pullman-Observation Car

*Diagrams of Club-Lounge and Observation Cars on
Union Pacific Trains*

Two-Thirds of the United States' National Parks Are Reached via Union Pacific

WITHIN the continental United States, Congress has set aside nineteen National Parks—vast public playgrounds for the benefit and enjoyment of the American people.

Of these nineteen, *thirteen* are either directly adjacent to Union Pacific rails, or are conveniently reached by Union Pacific service.

The National Parks are the most inspiring, most satisfactory of Western vacation lands. In planning a National Park or other Western trip, consult the well-informed representatives of the Union Pacific. You'll find their advice and assistance helpful.



Grand Canyon Lodge, Grand Canyon Nat'l Park

Expert Travel Service

UNION PACIFIC travel service begins long before you board one of our fine trains. Our offices in many important cities in the United States (see next page) are manned by travel experts whose duty and pleasure it is to see that you get the utmost from a Western trip. They can readily give you the kind of information you need—suggest interesting stopovers, make reservations, facilitate your enjoyment of the journey.

For reservations, tear out and mail the coupon below to the nearest representative shown on the following page.

UNION PACIFIC SYSTEM:

Please reserve standard sleeping car accommodations as follows:

Train (name or number).....

Leaving.....m.
(City) (Hour)

Date.....

Lower berth(s) ☐ Upper berth(s) ☐

Compartment ☐ Drawing room ☐

If Tourist Car desired, check here ☐

Name.....

Street Address.....

City..... State.....

Representatives of THE UNION PACIFIC SYSTEM

ATLANTA, GA.—1232 Healey Building	
W. C. ELGIN.....	General Agent
BIRMINGHAM, ALA.—742 Brown-Marx Building	
J. H. DOUGHTY.....	General Agent
BOSTON, MASS.—294 Washington Street	
WILLARD MASSEY.....	General Agent
CHICAGO, ILL.—6 South La Salle Street	
G. R. LEMMER.....	General Agent, Passenger Department
CINCINNATI, OHIO—705 Dixie Terminal Building	
W. H. CONNOR.....	General Agent
CLEVELAND, OHIO—925 Euclid Avenue	
W. H. BENHAM.....	General Agent
COUNCIL BLUFFS, IOWA—36 Pearl Street	
H. B. ELLER.....	City Ticket Agent
DALLAS, TEXAS—909 Magnolia Building	
E. G. KOENEMAN.....	General Agent
DENVER, COLO.—601 Seventeenth Street	
I. W. CARTER.....	Assistant General Passenger Agent
DES MOINES, IOWA—6th and Locust Streets	
F. P. STAFFORD.....	General Agent
DETROIT, MICH.—131 Lafayette Blvd., West.	
A. R. MALCOLM.....	General Agent
KANSAS CITY, MO.—805 Walnut Street	
SETH C. RHODES.....	General Agent, Passenger Department
LEAVENWORTH, KAN.—Union Station	
A. E. MARTENY.....	General Agent
LINCOLN, NEBR.—1308 N Street	
A. D. GRANT.....	General Agent
MILWAUKEE, WIS.—230 Wisconsin Avenue	
K. T. MINDEMANN.....	General Agent
MINNEAPOLIS, MINN.—125 South Third Street	
E. H. HAWLEY.....	General Agent
NEW ORLEANS, LA.—226 Carondelet Street	
G. J. GARMON.....	General Agent
NEW YORK, N. Y.—475 Fifth Avenue	
J. B. DEFRIEST.....	General Agent
NEW YORK, N. Y.—225 Broadway	
J. B. DEFRIEST.....	General Agent
OMAHA, NEBR.—1523 Farnam Street	
L. BEINDORFF.....	General Agent, Passenger Department
PHILADELPHIA, PA.—508 Commercial Trust Building	
H. L. LAUBY.....	General Agent
PITTSBURGH, PA.—216 Oliver Building	
JOHN D. CARTER.....	General Agent
ST. JOSEPH, MO.—517 Francis Street	
LOUIS MOTTER.....	G. F. and P. A., St. J. & G. I. Ry. Co.
ST. LOUIS, MO.—308 North 6th Street	
J. L. CARNEY.....	General Agent
TORONTO, ONT.—69 Yonge Street	
GEO. W. VAUX.....	General Agent
TULSA, OKLA.—320 Kennedy Building	
F. F. ROBINSON.....	General Agent
C. J. COLLINS	D. S. SPENCER
General Passenger Agent	General Passenger Agent
OMAHA, NEBR.	SALT LAKE CITY, UTAH
GEO. R. BIERMAN	W. K. CUNDIFF
General Passenger Agent	General Passenger Agent
LOS ANGELES, CALIF.	PORTLAND, ORE.

W. S. BASINGER
Passenger Traffic Manager
OMAHA, NEBR.

