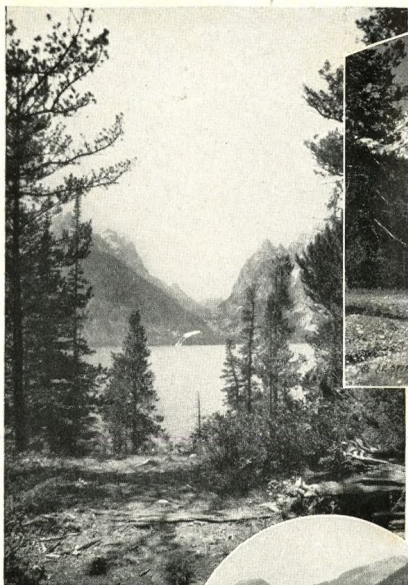


DUDE RANCHES OUT WEST





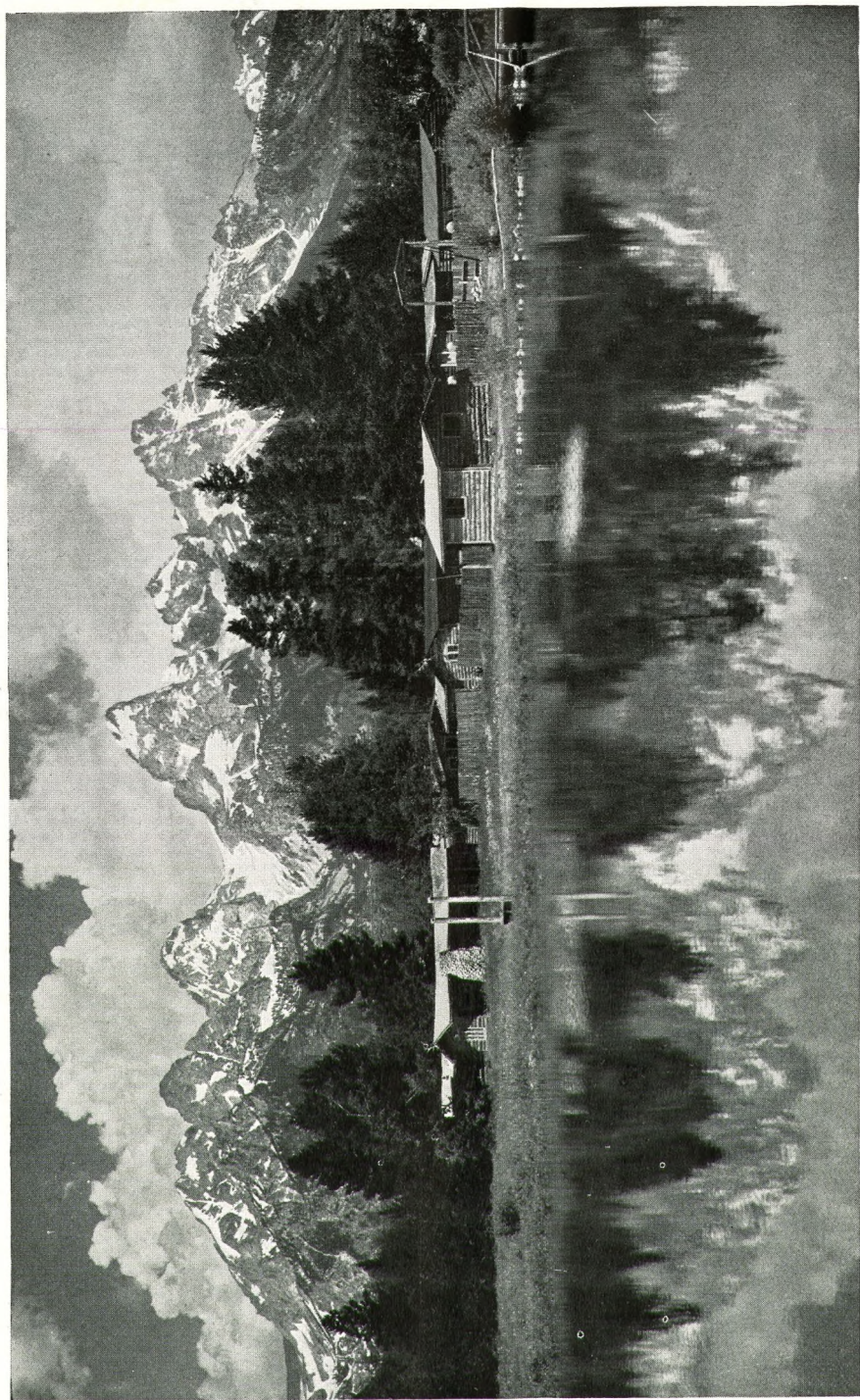
Dude Ranches Out West

DAWN flaming over the hills in a sighing, beckoning wilderness of spruce and pine—the refreshing babble of a tumbling mountain brook—neighing horses—ravishing aroma of bubbling coffee and crisping bacon—would you like to wake up and discover all this?

Far from the crowded city, where pavements give place to wooded trails, where life on the open prairies is varied by pack trips to the haunts of mountain trout, a *real* vacation awaits you.

The "Dude Ranches" of the West make you free of the great outdoors. The "wranglers" who operate them extend a hospitable welcome to the "dude" and teach him the ways of the West, its wisdom and its beauty.

This booklet is a round-up of facts about "Dude Ranches" and resorts reached via the Union Pacific. Any Union Pacific representative listed on page 47 will gladly help you plan your vacation. Put foot to stirrup, reader, and we'll go out West!



© by J. E. Stimson

The Magnificent Titons from Bar BC Ranch, Jackson Hole, Wyoming



Horseback Party at Jackson Lake Lodge

THE DUDE RANCH COUNTRY

Simplicity combined with comfort is the keynote of the Dude Ranch. In its typical form it is a genuine Western stock ranch whose accommodations have been amplified to entertain a number of vacation guests—honorably entitled “dudes” in Western parlance. It provides abundant, savory food, and comfortable shelter, but not the complex superfluities of modern city life. Its hospitality is something far more spontaneous and personal than that of an ordinary summer resort; its sports are the simple ones of the wilderness—fishing, hunting, exploration, and above all, Western riding. The expert in these arts is free to enjoy them when and how he pleases; the novice is given skilled instruction and assistance. The “Dude Wrangler” always tries to select congenial guests who sincerely love the out-of-doors; for such guests, whether men, women or children, no vacation could be more profoundly satisfying.

Many of the Dude Ranches served by Union Pacific lines are located in Wyoming—in Jackson Hole, and the adjacent territory, or in the southeast, near Laramie and Cheyenne. Jackson Hole, the old Western name of the Snake River Valley, is just south of Yellowstone National Park. Once reputed to be the secluded refuge of outlaws and cattle “rustlers,” it is now known as one of the best fishing and hunting regions, and one of the most beautiful scenically, in the country. It is a strip of lovely semi-wilderness, 65 miles long and 10 to 20 wide, fringed by huge forests and hemmed in by mountains. Far to the eastward are the serrate crests of the Wind River Range; to the south, the more rounded Gros Ventres; and towering against the western sky, the prodigious, glaciated spearheads of the Teton peaks. Its pine-girt lakes and streams are alive with trout; its woods abound with big game—elk, deer, moose and bear; and on the plains are sage hens and prairie chickens. Jackson, retaining much of the frontier atmosphere, yet equipped with all the essential conveniences of civilization, and Moran, on beautiful Jackson Lake, are the principal towns. A genuine Western rodeo is staged every year at Jackson, at which riders from the various ranches



Giant Geysers, Yellowstone Park



A Boiling Spring, Yellowstone Park

compete. The ranches of Jackson Hole are reached via Union Pacific to Ashton, or Victor, Idaho, thence by auto stage; also via Union Pacific to Rock Springs, Wyoming, thence by auto stage through Pinedale; or via Yellowstone Park (West Yellowstone Entrance) during the season. (See map, pages 24 and 25.)

There are many friendly ranches, too, on the great Laramie Plains, nestling at the base of the Medicine Bow Range, looking southward upon the blue mountains of Colorado, and northward an incredible distance over the Continental Divide. Excellent bases these ranches are for pack trips into the woods, fishing trips to the hundred crystal-clear lakes of the Snowy Range, and rides over open prairie, or past the wind-wrenched pines and junipers on the mountain ridges. Medicine Bow National Forest, one of the nation's largest, is near by. Elk, deer, grouse and occasional bears are found in its confines.

Other fine ranches are located in the wilder portions of the Colorado mountains; in the wild and rugged country of southwestern Montana and central Idaho; in the Blue Mountain region of Oregon; and in or near the oak-clad hills of the San Bernardino National Forest, in California.

See Yellowstone National Park En Route

No description can convey the strange thrill of Yellowstone Park—the weirdest, most curiously impressive spot on earth. Its marvelous geysers leap skyward amid subterranean rumblings. Its wild bears beg tourists for sweets. Its Grand Canyon and falls are magnificent, unforgettable.

Foreigners circle the globe to see Yellowstone today. Who fails to include Yellowstone in his Western trip misses a great experience. The added expense of a trip from Pocatello, Ogden or Salt Lake City is negligible. The regular tour of the Park occupies but 4½ days. West Yellowstone (the Union Pacific entrance) is the popular gateway, the only rail station directly on the boundary. Visitors to Jackson Hole may easily go or return via Yellowstone National Park. The Yellowstone season is approximately June 20th to September 19th.



The Circle H Ranch, Jackson Hole, Wyoming

Jackson Hole Ranches

BAR BC RANCH (Brand $\overline{8C}$). The rustic cabins of the Bar BC Ranch are opposite Grand Teton, 100 yards from the Snake River, two miles from the main Yellowstone Park auto road, 18 miles from Jackson, 20 miles from Wilson and 40 miles from Victor, Idaho. Thirty-two rooms in comfortable log cabins accommodate 50 guests.

The charm of Bar BC, one of the oldest and best known of the Jackson Hole Ranches, lies in its simplicity. All necessary comforts are provided, but luxuries are neither expected nor desired. Guests do "rough it in comfort." The meals, partly on account of the ranch's excellent garden, its dairy and ice house, are tempting. Guests are supplied with hot water and portable tubs. There is a large swimming pool and the sanitation is excellent.

Struthers Burt, Horace Carncross, M. D., G. T. Bispham, Harold Hammond, J. C. LePage and Irving P. Corse are the owners; Mr. Corse is the permanent resident in charge.

Rates include saddle horse hire, for horseback riding is a basic sport in this region. The longer horseback trips lead into the Tetons and the Gros Ventre Mountains, famous for fish and game. Rates are \$300 to \$310 a month, or \$77 a week. The management meets guests at Victor and conveys them to the Bar BC for an average charge of \$12. Pack trips with guide, cook, horse wrangler and complete equipment are conducted for parties of four or more at \$18 per day, per person. Hunting parties for big game are arranged during the season.

The Bar BC requires personal references from prospective guests, a policy strictly adhered to. Correspond with the Bar BC Ranch, Moose P. O., Jackson Hole, Wyoming. From February 1st to June 10th, Mr. Corse is at Whitemarsh, Penn. A letter to this address will be answered sooner than one sent to Wyoming. (See also, White Grass Ranch, Page 21.)



Wrangler Roping Horse at Jackson Lake Lodge

CASCADE RANCH. "A Home Away from Home," is the slogan of the Cascade Ranch, which is charmingly located 40 miles from Victor, Idaho, and 14 from Jackson, Wyoming, on Horse Creek near the Snake River, three-quarters of a mile from the highway.

Eight cabins, 14 by 15 feet, accommodate 16 "dudes." The rate is \$40 a week, which includes meals, cabin and saddle horse. The ranch is open all year. Clark Brody, Jackson, Wyoming, is the proprietor. Outings, fishing trips along the Hoback and Snake Rivers, and Jackson and Jenny Lakes, pack trips and personally conducted hunting trips are offered.

THE CIRCLE H RANCH (Brand ®), about 40 miles from Victor, Idaho, has a picturesque and secluded setting on the bank of the Snake River, near the mouth of imposing Death Canyon, and commanding a splendid view of the rugged Tetons. Seven attractive log cabins accommodate 14 guests. The pleasant central lodge, containing dining and recreation rooms, is tastefully furnished and ornamented with trophies of the hunt, and is provided with a well-chosen library.

The Circle H is a producing hay ranch and has its own horses, dairy cows and garden, insuring abundant fresh milk and vegetables for the table. Hunting parties are conducted on pack trips into the mountains. Big game is abundant; moose are often seen near the ranch in summer; the fishing is excellent. Guests will be met at Victor. References are furnished and required. The rate, \$12 a day, includes use of saddle horse. Write to H. H. Harrison, Proprietor, Wilson, Wyoming, for additional information.

THE CRESCENT LAZY H RANCH (Brand ☾) is 24 miles from Victor, Idaho, the nearest rail point. On the east it is bounded by the Snake River; on the west, by the Teton National Forest. The superb crest of the Grand Teton is visible from almost every part of the ranch. Through the property runs Fish Creek, a little river teeming with trout. The buildings are on well-timbered land, icy, spring-fed streams provide abundant pure water. Large and small



Dining and Recreation Hall, Crescent Lazy H Ranch

game is plentiful. Wild ducks and geese nest in the valley and grouse are common.

The ranch has a large combination dining hall and recreation room, electrically lighted, with modern kitchen adjoining, a laundry, and a bath house with hot and cold showers. Substantial new log cabins, tastefully and comfortably furnished, accommodate 50 guests.

Horseback riding is the chief sport, and every guest is assigned a suitable horse. Numerous trails lead from the ranch to points of scenic beauty. Opportunities for hiking and mountaineering are unlimited and excellent trout fishing is close at hand. A limited number of big-game hunters will be accommodated during the season (September 15th to November 15th). The summer season is July, August, and September, but the ranch is open all year to satisfactory guests. The rate is \$10 a day, including use of saddle horse. Laundry is extra. References are given and required. Guests will be met at Victor, Idaho, Moran or Rock Springs, Wyoming. For further information, address Edward G. Brown, Crescent Lazy H Ranch, Wilson, Wyoming, or during winter months, J. A. Season, 2077 Abington Road, Cleveland, Ohio.

THE CROSS AND CRESCENT RANCH (Brand +) , Moran, Wyoming, is situated on the highway a quarter of a mile east of Jackson Lake, 54 miles from Victor, Idaho, the nearest railroad point. The buildings include a central lodge and three attractive log cabins, accommodating seven persons. There is a fine view of the magnificent Teton Range.


The Cross and Crescent features summer pack trips through Yellowstone Park, the Tetons and Jackson Hole, conducted by licensed and bonded guides; also hunting trips in season for bear, elk, moose and deer. In addition, it offers boat trips on Jackson Lake and auto trips through the entire Jackson Hole country. All equipment is new. The ranch takes pride in its reliable saddle horses, excellent meals and courteous service. Guests are met with a car at Victor or other Union Pacific System points. For further information and rates, write M. R. Grimmesey, Moran Post Office, Wyoming.



Bear Cubs at the El-bo Ranch

THE DANNY RANCH is located in an open meadow at the foot of the Tetons, affording an exceptionally fine view of the Grand Teton, mightiest peak of the range. It is 300 yards from String Lake, less than half a mile from Jenny Lake, and a mile and a quarter from Leigh Lake—all beautiful, limpid bodies of water, surrounded by pine trees and affording excellent fishing.

A neat central lodge and four substantial log cabins offer comfortable accommodations for 15 guests. Pack trips are arranged, also hunting parties for bear in the spring, and elk and other big game in the fall. Rates for special trips furnished on application. The regular rate is \$8 a day, including room, meals, and exclusive use of saddle horse. References furnished. Write T. S. Grace, Proprietor, Jenny Lake, Wyoming.

THE DC BAR RANCH (Brand ) includes 640 acres of forest and plain in the smiling Green River Valley, five miles from Kendall, Wyoming, and about 134 miles from Rock Springs, Wyoming. Beside a beautiful aspen grove, near a clear, cold mountain stream, are the ranch house, containing living and dining rooms, and the log cabins, providing comfortable and attractive sleeping quarters. Good, wholesome meals are served; green vegetables and fresh milk and eggs are always available.

Riding, mountain climbing in the Wind River Range, fishing and hunting in season are the chief diversions. Each guest is assigned a saddle horse suited to his experience. There is fishing in the Green River, and pack trips may be arranged to nearby lakes and streams. Bear, elk and deer are plentiful and there are some moose. The fall hunting season opens September 15th.

The rate is \$60 a week for a month or less, \$55 a week up to two months and \$50 a week for over two months, including automobile transportation from Rock Springs and all expenses on the ranch. From July 2d to August 21st the management conducts a girls' camp on the premises, open to 14 girls of from 13 to 16 years in age. They comprise a separate unit with their own sleeping quarters, a woman physician and a chaperon. Four weeks of their summer is spent in a leisurely pack trip through the Jackson Hole and Gros Ventre country.



The Cross and Crescent Ranch

For full information regarding ranch and girls' camp, address Miss Anne Christensen, Director, 334 Calvert Road, Merion, Pennsylvania.

THE DOUBLE DIAMOND RANCH FOR BOYS (Brand ∞) is 16 miles north of Jackson at the base of Grand Teton, between Cottonwood and Taggart Creeks, and comprises 120 acres. The season is June 15th to September 15th. This ranch accommodates 25 boys of high school and college ages in cabins and tent houses. It has an extra large recreation hall and dining lodge. Forty-two selected saddle horses are maintained.

This ranch draws its patronage almost entirely from Philadelphia territory, and charges \$800 for the season, including transportation from Philadelphia in the custody of counselors who remain with the boys throughout the entire trip; a side trip to Yellowstone is also offered at \$50 additional, with refund if the trip is not made. The ranch has its own fresh vegetables, milk and cream. References are required and given. Make reservations in advance through J. S. Clark, Jr., 1529 Walnut Street, Philadelphia, or Frank R. Williams, Proprietors, Double Diamond Ranch, Moose P. O., Jackson Hole, Wyoming.

THE EL-BO RANCH (Brand ⌘), a picturesque Western stock ranch, specializing in the breeding of fine horses, lies at the foot of the Grand Teton, 40 miles south of Yellowstone Park and 50 miles north of Victor, Idaho. Two large mountain streams run through the property, which comprises 1,000 acres, surrounded by wooded mountains and adjacent to two beautiful lakes. All buildings are of logs; the guest lodges are in little "parks" near the streams. The ranch raises its own fresh meats and vegetables, berries and dairy products. The half-mile race track and rodeo grounds add a further picturesque touch to the Western atmosphere. Guests may help to "wrangle" stock on the range, and have lots of fun at haying time. There is a camp-fire every night.

There are rowboats for fishing in small lakes and motor boats for fishing in large lakes. Moose, elk, deer, grouse and other game are seen almost daily in the adjoining country. Four-room cabins have hot water, bath and toilet. One and two-room cabins have hot water, shower and tub baths for every six



Rodeo in Jackson Hole



Grand Teton Across the Lake

rooms. The rate of \$75 a week for one person in a room, or \$70 each for two in a room includes meals and use of a fine saddle horse. Guests are limited to 25, and to insure congeniality, references are required. Address El-bo Ranch, Moose Post Office, Jackson Hole, Wyoming, or the winter office, 210 Homer Laughlin Building, Los Angeles, California.

FLAG RANCH is 23 miles from Moran on the Jackson Road, two and one-half miles south of Yellowstone's southern entrance, and a 50-mile stage ride from Ashton, Idaho, the nearest Union Pacific point. There is good trout fishing in the immediate neighborhood. Licenses, tackle, camping supplies, tobacco and incidentals may be procured at the ranch. Meals are \$1 each; lodging, \$1 per night. Accommodations and service are limited, but 25 persons can be reasonably provided for upon sufficiently advanced notice. The main log building has 15 rooms. On account of the ranch's isolation, it is best to inquire well in advance concerning rates and reservations. Address Flag Ranch, Moran, Wyoming.

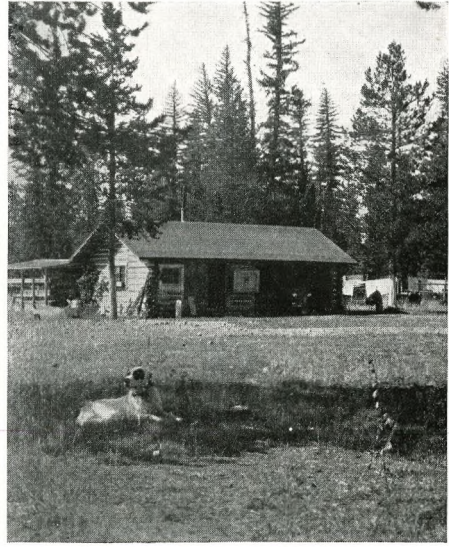
THE FLYING DIAMOND RANCH, operated in connection with the Snake River Fox Ranch, is located at the forks of the Buffalo and Snake rivers, 65 miles from Victor, Idaho, the nearest rail point, and five miles east of Moran. The three cabins accommodate 12 guests. Saddle horses are obtainable at the ranch; the management also outfits pack trips and provides licensed guides for big-game hunting; outfitting parties for moose hunting is a specialty.

The ranch season is from June 1st to December 1st. The rate is \$6 a day for accommodations and meals; saddle horses, \$3 a day. For rates on special trips, etc., write to John W. Hogan, Flying Diamond Ranch, Elk, Wyoming.

THE FLYING V RANCH (Brand ∇), is four miles northeast of Kelly, Wyo., beside a mountain stream in the elk country, with a superb view of the rugged Tetons. The main building is an attractive eleven-room ranch home, furnished with taste and comfort. Heated cabins and floored tents are used for sleeping quarters. The Flying V is a producing horse and cattle ranch, providing daily supplies of milk, cream, eggs and vegetables. Each guest is assigned a well-broken saddle horse for his exclusive use.



The Danny Ranch



The Flying Diamond Ranch

During July and August, pack trips for boys are taken into the big-game preserves. In August a horseback trip through Yellowstone Park is featured. The rate for the full two months' season, including the boys' trips, is \$550; for August, including Park trip, \$300. The regular rate at the ranch, including use of saddle horse, is \$70 a week. Guide service, \$7.50 a day. Big-game hunters and winter guests may also arrange for accommodations. The manager, John F. Woodman, is a university man, a bonded guide of wide experience and a former U. S. Forest Ranger. Mrs. Woodman is a registered nurse. The Flying V provides exceptionally good meals and maintains a high standard of service. Mr. Woodman will gladly exchange references and supply further information. Address letters and telegrams to Flying V Ranch, Kelly, Wyoming.

Flying V is reached via Union Pacific to Victor, Idaho, thence by auto stage, via Jackson, to Kelly; also via Union Pacific to Rock Springs, Wyoming, whence an auto bus runs to Jackson during the summer. Parties will be conducted to the ranch from Jackson or Victor at an average cost of \$10.

GREEN RIVER LAKE LODGE is on the shores of Green River Lake, 154 miles by road from Rock Springs, Wyoming. The scenery is exceptionally beautiful, as the lakes lie amid the wooded spurs of the Wind River Range; the property affords fine views of Old Square Top Mountain and other striking peaks. The ranch has a central dining room and lobby, and six comfortable sleeping cabins—four single and two double. Mr. Hobson, the proprietor, has a ten-passenger gasoline launch, two rowboats and an outboard motor boat available for lake trips, and keeps a string of 20 saddle horses. There is good fishing in the Green River Lakes and other neighboring waters. Parties of four or more are met at Rock Springs if desired. Rate for cabins only, \$5 a day double, \$2.50 single. Rate per person including meals, use of saddle horse and boats, etc.—everything but long pack trips—\$60 a week, rate for longer period on request. For further information, write W. N. Hobson, at Granger, Wyoming, until May 15th; thereafter, at Cora, Wyoming.



Leek's Camp on Jackson Lake



Captive Bear Cub at Circle H Ranch

THE GREEN RIVER P-TREE RANCH is 140 miles north of Rock Springs, Wyoming, on the slopes of the Wind River Mountains. It is $\frac{3}{4}$ mile from the Green River, 3 miles from Kendall P. O., 25 miles by road from the Green River Lakes, and 15 miles from the Hoback Canyon road to Yellowstone Park. Cabins and rooms are new, comfortable and sanitary. Inviting meals are served in the rustic main lodge. There is a ranch garden and dairy, and ice is kept.

Boating, fishing, camping, horseback riding and pack trips to the famous Green River Lakes and "Old Square Top" Mountain furnish varied recreation. Auto trips may be arranged to Yellowstone Park and other points of interest.

The rate of \$5 per day includes board, cabins and guides for saddle-horse trips, and fishing with boats, whenever parties return to ranch nightly. Guides, cook, horse wrangler and camp equipment are furnished for pack trips for four or more at \$10 a day per person. Special arrangements for smaller parties. Guests are met at Rock Springs and conveyed to the ranch for a charge of \$10. The ranch has telephone service. References exchanged. Write to W. H. Showers, Manager, Green River P-Tree Ranch, Kendall, Wyoming.

JACKSON LAKE LODGE is two and one-half miles north of Moran P. O., and 23 miles south of Yellowstone Park; it overlooks Jackson Lake, commanding splendid views of the majestic Teton Mountains, particularly Mt. Moran. It is a convenient base for excellent fishing, hiking, horseback riding and motoring. Saddle horses, motor boats, rowboats and automobiles may be hired. There is a central lodge and a number of one, two and three-room rustic log cabins, handsomely furnished and thoroughly comfortable. The Lodge outfits pack-trip parties and big-game hunters.

Jackson Lake Lodge accommodates 125 persons. All sleeping rooms in the cabins have hot and cold running water and a number have baths and toilets. The central lodge has bath facilities available without charge to guests occupying cabins without baths. Tasty, wholesome food is served in the attractive central dining hall overlooking the lake, and individual service is featured.



The El-bo Ranch at the Foot of Grand Teton

J. S. Simpson, bonded guide and outfitter connected with the Lodge, conducts a summer camp in the mountains for girls of high school and college age, under the chaperonage of Miss Toots Kennedy, of the University of Wyoming. Pack trips to Yellowstone and elsewhere are featured. Separate camps for boys or married couples can also be arranged. Rates on application.

Jackson Lake Lodge is served by daily busses to and from Yellowstone National Park. It is most easily reached via Union Pacific to Victor, thence via auto stage to Moran; or by Yellowstone Park bus via West Yellowstone. Guests will be met at Victor if desired.

Daily, weekly and monthly rates are reasonable and vary according to the number in the party and kind of accommodations desired.

For complete information regarding rates and facilities write Jackson Lake Lodge, Inc., Moran P. O., Wyoming.

THE JY RANCH (Brand γ), scenic and remote, lies on the south shore of beautiful Phelps Lake, near picturesque Death Canyon, about 21 miles northwest of Jackson, 14 miles north of Wilson, and only 50 miles from the south entrance to Yellowstone Park. North and west of it the lofty Tetons rise abruptly from the water's edge. The comfortable ranch cabins and handsome central buildings accommodate 65 guests.

Guests enjoy the one, two and three-room log cabins with open fireplaces. Portable tubs and hot water are available in the cabins, and the sanitation is excellent. There is a central bath house, with hot and cold running water.

There is a spacious, attractively furnished dining room on the lake shore, and two large recreation lodges, full of interesting curios.

JY Ranch does not conform to summer hotel conventionalities, ranch clothes being worn almost entirely, yet it provides complete comfort and high-grade service in a virgin mountain wilderness of amazing grandeur. The same cook has been in charge for ten years, and the cuisine is excellent.

Swimming, boating, mountain climbing, fishing, horseback riding and hunting furnish a variety of sports. Summer camping trips and big-game



The Flying V Ranch

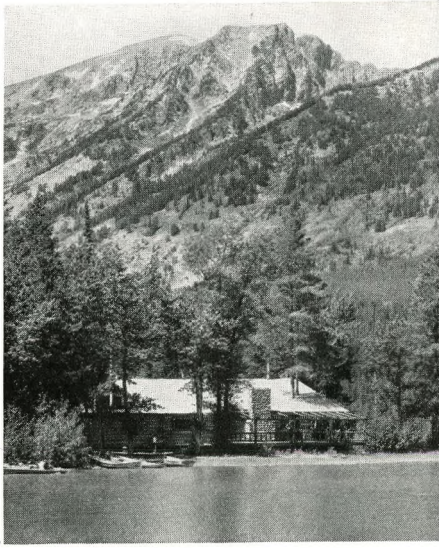
hunting trips may be arranged. Teal, mallard and sage hens are shot in season; big game in the autumn. Motor trips are offered to Yellowstone Park, the Gros Ventre Mountains, Hoback Canyon and other scenic points. The rate, \$65 a week, includes cabin, board, boats and use of saddle horse. Laundry, \$2 a week extra. Licenses, camping clothes, candy, tobacco, cigarettes and medicine may be bought at the well-stocked ranch store.

The JY is one of the oldest, largest and most notable "dude" ranches in Jackson Hole. A ranch in connection with it, owned by the management, supplies fresh eggs, vegetables, milk, meats, etc. A private telephone line from the ranch makes telephone and telegraph facilities most convenient to guests. Automobiles can be hired for excursions or hunting at reasonable rates. Guests are met at Victor, Idaho, the nearest railroad station, or at any other desired point, by arrangement. Send mail to H. S. A. Stewart, Jr., JY Ranch, Wilson, Teton County, Wyoming; telegrams via Victor.

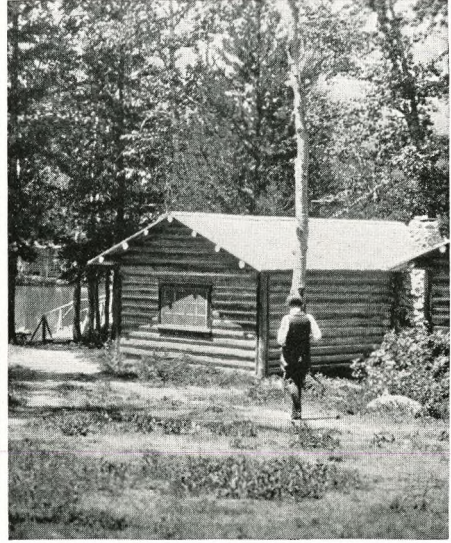
LEEK'S CAMP (Brand \mathcal{L}) is at the north end of Jackson Lake, at the base of the towering Tetons, opposite Forellen Peak, on the main highway to and from Yellowstone Park. It is reached daily by auto busses from Victor, Idaho, and Rock Springs, Wyo. There is a new central lodge and dining room, and private log cabins and tent houses, furnished to suit the individual. Well-selected, appetizing meals are served. The trout fishing is excellent, catches weighing from 10 to 20 pounds not being uncommon. On short horseback trips, hundreds of elk may be seen in their summer grazing ground.

Regular rate, \$5 per day for meals, cabin and boat. Bear-hunting parties are conducted May 15th to June 15th, for \$10 per day, per person, including saddle horse, boat, guide, meals and bed. The fall hunting season opens September 15th.

From June 15th to August 17th, the management will conduct a camp for a group of not more than 25 boys between the ages of fourteen and nineteen. This will be a separate unit under the directorship of Dillon Wallace, noted explorer and veteran director of boys' camps. Riding, pack trips (including



Dining Lodge at JY Ranch



Cabin at JY Ranch

one through Yellowstone Park), fishing, hiking and swimming are featured. Upon arrangement, a camp representative will meet boys at New York or other Eastern or Middle Western points and conduct them to camp. The rate for the season is \$610, including transportation from Rock Springs, Wyoming.

MORAN-TETON LODGE (Brand ∞₂). Failure to catch a five-pound trout is not to be "put up with", according to B. D. Sheffield, proprietor of Moran-Teton Lodge, which is delightfully situated at the outlet of Jackson Lake, adjacent to Moran P. O., and directly opposite imposing Mt. Moran. Mr. Sheffield shows his confidence in the fishing by offering to deduct \$1 a day from a guest's bill when the latter fails to catch a five-pound trout, providing that the guest agrees, in case he catches a nine-pound trout, to pay \$1 a day extra.

Moran-Teton Lodge consists of a group of rustic log cottages accommodating 125 guests. There is a large central building with dining and lounging rooms. Buildings are electric-lighted, with modern plumbing and hot and cold shower baths. Daily rate, \$4; weekly, \$24.50; monthly, \$90. Saddle horse hire is \$2.50 a day, \$14 a week, and \$45 a month. Guide service, \$5 a day.

Elk, moose and bear are found in the nearby country; Mr. Sheffield specializes in hunting parties. Fishing tackle, rowboats, launches, and other sporting accessories may be procured through the management. The Lodge auto meets guests at Victor, Idaho, on one day's notice; charge per person for one-way trip, \$25, for round trip \$35, baggage included. Address communications to B. D. Sheffield, Moran-Teton Lodge, Wyoming.

RED ROCK RANCH (Brand ∞), is 30 miles east of Jackson, Wyoming, and 53 miles from Victor, Idaho, the nearest rail point. It is in the charming Crystal Creek Valley three miles from the Gros Ventre River—a country ideal for mountain trips, kodaking, trout fishing, and big-game hunting in season.

Guests are met with the ranch auto by arrangement at any of the towns mentioned, or at Rock Springs, Wyoming.



© W. O. OWEN

Grand Teton and One of Its Glaciers



Moran-Teton Lodge on Jackson Lake

Red Rock Ranch accommodates 20 persons in log cabins and tent houses. There are bathing facilities with hot water available. The meals are as good as the country affords, with plenty of vegetables and milk. Everything needed for a real out-of-doors vacation may be obtained at the ranch or at Jackson. A specialty is made of summer pack trips to Green River Glaciers and Yellowstone Park. Rates, including horse, cabin, meals and guide service, are \$70 a week for cabin and \$60 a week for tent houses. Address W. P. Redmond, Proprietor, Red Rock Ranch, Kelly, Wyoming.

SARGENT'S INN, Daniel, Wyo., is on the upper Green River in an attractive fishing and hunting region southeast of Jackson, 23 miles south of the Gros Ventre Mountains and 20 miles east of the Wind River Range. Daily (except Sunday) auto stages from Kemmerer (100 miles) and Rock Springs (120 miles), both on the Union Pacific main line, stop at the Inn. Either trip may be made in four hours. The fishing is exceptionally good and trout anglers are never disappointed. Duck and chicken shooting, however, is the leading sport.

The Inn accommodates 50 guests in the attractive main building and in four rustic cabins adjacent. Rooms in the main building are tastefully furnished, have hot and cold water, and there are two complete bathrooms for guests. Acetylene light is used. The meals are noted for their excellence. Rates are \$80 per month, American plan; \$22.50 per week and \$3.50 per day. Correspond with L. W. Sargent, Proprietor, Sargent's Inn, Daniel, Wyoming.

STS RANCH (Brand 575) is situated in the forest on the south fork of the beautiful Snake River, two miles by road and three-fourths of a mile by trail from Moose Post Office, Wyoming, and is a good place from which to hunt and fish. The ranch has an attractive main cabin, with individual cabins and sleeping tents, accommodating ten persons. Each guest has a portable bath tub and hot water is supplied every morning. The ranch has its own spring water, ice, fresh vegetables, eggs, and milk.



A Hunting Party from the El-bo Ranch

Pack trips to the mountains or to Yellowstone Park, fishing, big-game hunting, automobile trips to points of interest, shooting of ducks, geese, grouse and sage hens in season—these are the attractions of the STS. Boats may be rented at Jenny Lake, seven miles from the ranch. The STS Ranch may be visited in winter, also. It has a dog team and features snow-shoeing, skiing and other popular winter sports.

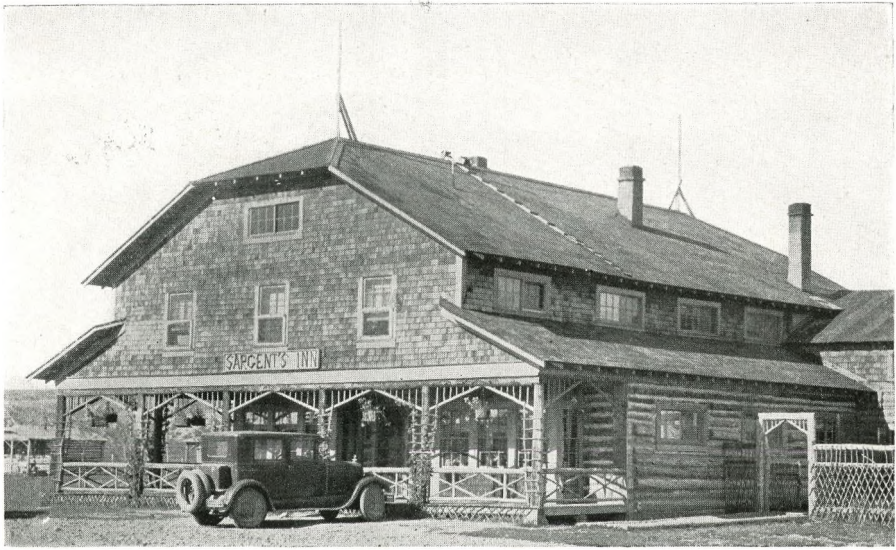
Rates, including saddle horse, are \$50 a week. There are no extra charges. A deposit of \$50 per person, which is applied to the first week's board, is requested when making reservations.

The ranch is reached most easily from Victor, Idaho. Another good route from the east is via Union Pacific System to Rock Springs, Wyoming; a third is via West Yellowstone, Montana, through Yellowstone Park by auto stage to Moran. The ranch car can meet guests at Rock Springs or Moran. For further information, address Buster Estes, STS Ranch, Moose P.O., Jackson Hole, Wyoming.

TRAIL RANCH (Brand C-⊃). On Swamp Creek in the heart of Jackson Hole, lies the Trail Ranch, surrounded by forest, and at the very foot of the majestic Teton Range. Two miles of winding road between the ranch and the highway provide seclusion, yet other neighboring ranches are easily accessible.

Horseback riding, up mountain foothills, through the forest to charming lakes, or over open, sage-brush-covered, flats and ranges, is the principal sport and means of travel. Mountaineers can find climbs of all sorts, from grassy, timbered slopes to the jagged central peaks of the Tetons. Fishing is good on the Snake River in early fall, and fine trout are also found in Jenny, Taggart and Bradley lakes. The ranch outfits special pack trips, supplying capable cooks and guides, and offers automobile trips to the town of Jackson, Jackson and Jenny lakes, up the Gros Ventre River, and through Yellowstone Park.

The cabins, accommodating 10 guests, are secluded from each other, but conveniently near the main building, containing living and dining rooms, kitchen and storehouse. The rate is \$55 a week, including saddle horse and



Sargent's Inn at Daniel, Wyoming

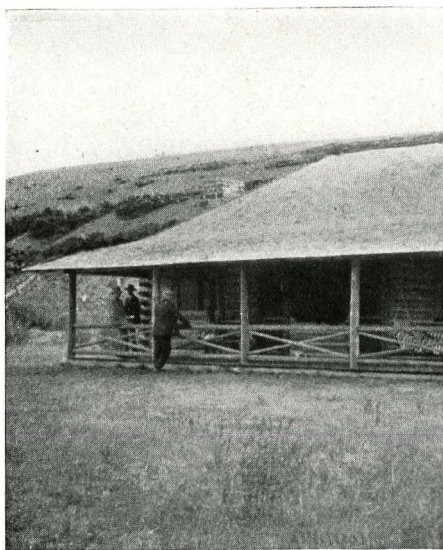
laundry. The ranch furnishes its own milk, cream, eggs and fresh vegetables, and is regularly supplied with fresh meat. Proprietor, J. Stevens Conover, Jr., Trail Ranch, Moose P. O., Jackson Hole, Wyoming. Send telegrams via Victor, Idaho. Allow at least three weeks for answers to letters.

THE TRIANGLE F RANCH (Brand ∇) accommodates 15 summer guests. It is located at Bondurant P. O., 100 miles by road south of Yellowstone Park on the Hoback River, at an altitude of 6,600 feet. It is surrounded by the rugged, pine-clad Gros Ventre and Hoback mountains, Victor, Idaho (58 miles), is the nearest rail point. Many trout streams near by provide good fishing.

The Triangle F offers the simple comforts of Rocky Mountain ranch life, rather than modern hotel service. The cozy, one and two-room log cabins, suitable for individuals or family parties, are heated by wood stoves and fireplaces. Wholesome meals are served ranch style in the main dining room. Milk, fresh vegetables and fruits always on hand. A recreation room with a large fireplace provides a cheerful place for evening gatherings. There is a post office and general store on the ranch. Hunters of elk, deer, moose, mountain sheep or bear will find good sport near the Triangle F. The management outfits and guides parties for big game and pack trips.

Guests are met at Victor or Rock Springs, by appointment. Reservations for summer and fall seasons must be made in advance. Rates are \$50 a week, including use of saddle horse. Address communications to W. E. Hiatt, Triangle F Ranch, Bondurant, Wyoming. Address telegrams to Pinedale, Wyoming.

THE TRIANGLE X RANCH is about 26 miles north of Jackson and 12 miles south of Moran. It is beautifully located near the Snake River, directly east of the Grand Teton, affording a fine view of the valley, the winding river and the majestic mountains beyond. A large rustic headquarters and six log cabins for sleeping accommodate about 20 guests. Bear hunting parties in spring and fall hunters are also accommodated. There is good fishing in the Snake River.



The Red Rock Ranch



Ready for the Hunt

The ranch is near the big-game country with its many beautiful wooded canyons, accessible for hikes, rides and short camping trips. Long trips into the mountains or to Yellowstone Park are also offered. The regular rate is \$5 a day, including saddle horse. Rates for special trips on request. Write John S. Turner & Sons, Triangle X Ranch, Grovont P. O., Jackson Hole, Wyoming.

THE V BAR V RANCH (Brand √-√) is in the Hoback Basin, 30 miles southeast of Jackson, on the "Mile-High" Rock Springs-Yellowstone Highway, 150 miles from Rock Springs and Kemmerer, Wyoming. Auto stage reaches the ranch in a few hours from Rock Springs, or from Victor, Idaho, 60 miles away, over the famous Teton Pass.

The V Bar V accommodates 30 guests in the main ranch building and in the comfortable cabins adjacent; it is lighted with acetylene gas; has bathroom and large open fireplace; and is completely comfortable throughout. The ranch meals include plenty of fresh milk, butter, eggs and meat. The noted Hoback River runs past the ranch and several near-by streams afford fine fishing. There is good hunting close at hand for elk, mountain sheep and deer.

Each guest has the use of a saddle horse. Children will be taught to ride by competent horsemen. Week-end trips to Ramshorn Peak and Granite Hot Springs are featured. The rate is \$40 a week per person; children under 12, half rates. For further information address Frank E. Van Vleck, Manager, V Bar V Ranch, Bondurant, Wyoming (telegrams via Victor, Idaho).

THE WARBONNET RANCH FOR BOYS (Brand ⚡), is operated as a separate unit by the management of the Crescent Lazy H Ranch, (see page 6). It has a capacity for 25 boys from twelve to sixteen years of age. Living and sleeping quarters are entirely of log construction. Land sports, woodcraft and riding are offered, the latter being featured. Saddle and pack trips are offered as a secondary rather than a primary attraction. The season is July 1st to September 1st, and the rate of \$500 includes everything except railroad fare, incidentals and laundry. For further information write J. A. Season, 2077 Abington Road, Cleveland, Ohio.



Interior of Lounging Room, JY Ranch, Jackson Hole

THE WHITE GRASS RANCH (Brand H-B), one of the Bar BC Ranches, containing 360 acres, is 20 miles from Jackson and about 50 miles south of Yellowstone Park. Separated from the highway by a mile of pine forests, it is secluded, yet easily accessible. The altitude is 6,500 feet. The log cabins, accommodating about 25 guests, are near the mouth of Death Canyon, and at the foot of the Tetons, towering to a height of more than 13,000 feet. The ranch has a swimming pool and provides a good table.

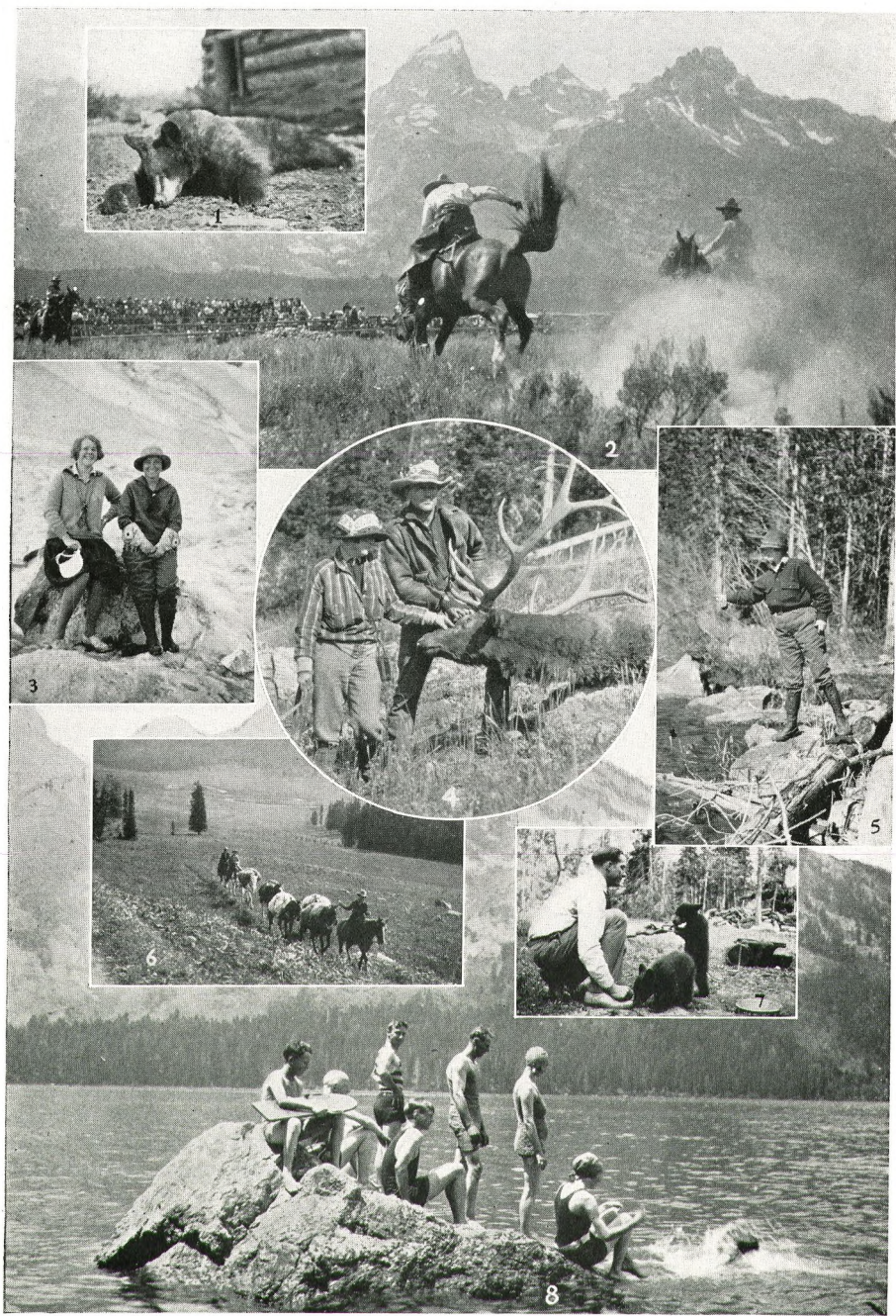
Riding, fishing, swimming, hunting and hiking are the chief attractions. Each guest has his own saddle horse. Hunting trips and summer pack trips are arranged on request. The rate is \$11 a day for a stay of less than a month; \$10 a day for a month or more. Guests will be met at Victor, Idaho, and taken to the ranch for \$12 per person. Personal references are required from anyone making application for the first time. For particulars write to Harold R. Hammond, White Grass Ranch, Moose P. O., Jackson Hole, Wyoming.

Continental Divide and Snowy Range Ranches

THE A BAR A RANCH (Brand 4 address, Encampment, Wyo.) is 80 miles west of Laramie, on the Rocky Mountain Highway. It accommodates 30 guests in tastefully furnished rooms and in cabins nestling beside a stream in the foothills of the Medicine Bow Range between the Medicine Bow and Hayden national forests. The fishing is good. There is excellent deer hunting, and sage-hen and duck shooting in season. Completely-equipped pack trips are featured.

The A Bar A is open June 15th to October 1st. The rate (American plan) is \$56 per week, including saddle horse. There are electric lights, three complete bathrooms, and a laundry for guests. The meals are first class, as fresh fruit, eggs, milk, butter, vegetables, iced drinks and tasty desserts are served.

The A Bar A also conducts two 30-day pack trips for boys (ages 12 to 18), limited to 20 boys, through the beautiful and rugged Medicine Bow and Hayden ranges. Experienced and educated men conduct the boys to and from New York City. Booklet for both ranch and boys' trip on request. References.



1. Bagged by a Triangle X Party

3. On the Grand Teton Glacier

5. A Jackson Hole Trout Stream

2. Rodeo at El-bo Ranch

4. A Fine Trophy

6. On the Trail

7. Bear Cubs at the Denny Ranch

8. Swimming in Jenny Lake



The STS Ranch



Moose Calf at Crescent Lazy H Ranch

BAR E D RANCH (Brand Ξ) is four miles northeast of Buford, Wyo., the second highest point on the Union Pacific with an altitude of 7,862 feet. The ranch is 30 miles, via the Lincoln Highway from Cheyenne, home of the famous Frontier Days Festival. Upon notification, guests will be met at Cheyenne or Buford, Wyoming.

Rugged hills, slashed by deep wooded ravines and covered with huge glacial boulders, surround Bar E D. It adjoins a military reservation of 56,000 acres. The rolling, ever-changing prairie is within easy reach. Scenic pack trips and one-day auto trips to many interesting regions may be made.

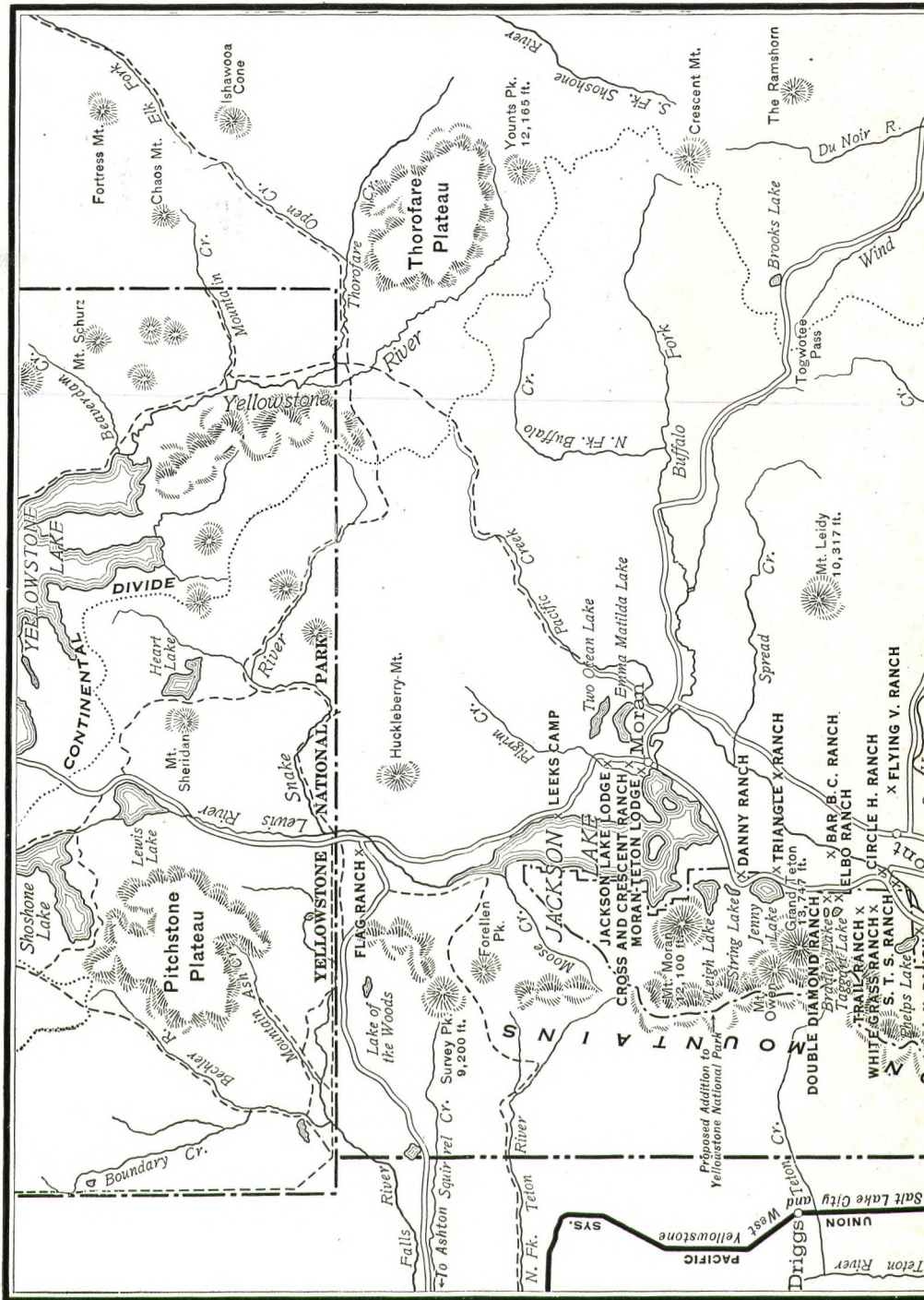
Ed. P. Blanchard, proprietor (send mail and telegrams to Buford, Wyoming), offers double cabins and rooms in the two-story ranch house which has a bathroom, telephone service, and other modern conveniences.

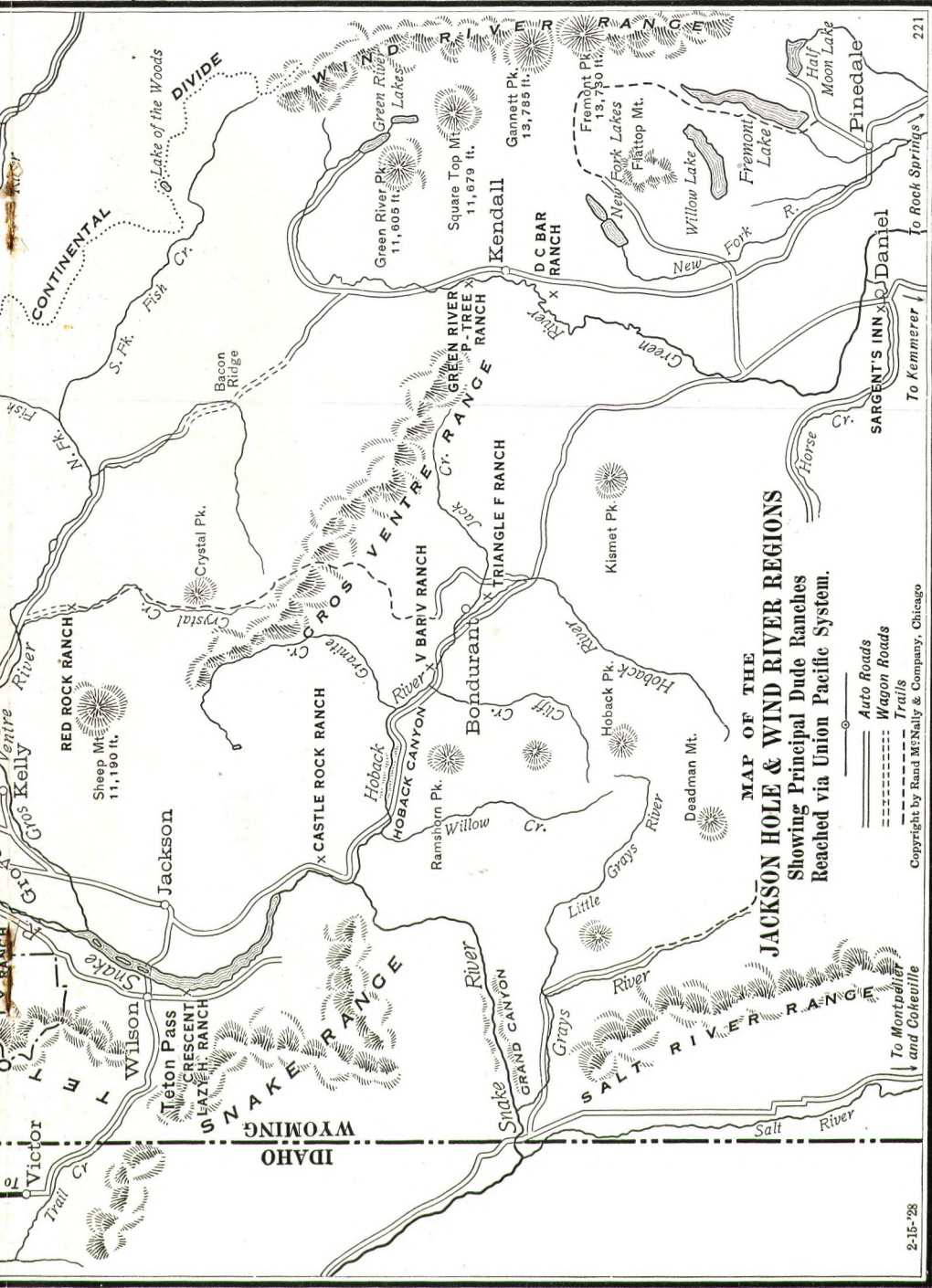
Motor trips for guests to Cheyenne during Frontier Days are made without extra charge. Two-day motor trips to Estes-Rocky Mountain National Park or to the Snowy Range may be arranged at a rate of \$10 per person. Saddle horses for Frontier Days cost \$10 extra. The Bar E D rate, including meals, lodging and saddle horse, is \$40 per week. Fresh vegetables, eggs, butter and milk are provided in the wholesome menus.

BOYD'S RANCH. Forty guests may be accommodated at Boyd's Ranch, one mile from Encampment, Wyo., on the S. & E. R. R. (via Union Pacific to Walcott, Wyo.). The ranch house has gas lights and provides hot and cold baths. There is a first-class dance floor and a good swimming pool. Rates per week are \$24.50, per month \$100, per day \$4, American plan. Special rates for children under 10 years are quoted on request. Overflow guests are accommodated in tents. Cabins furnished for light housekeeping may be rented.

If notified in time the management will meet parties at the station with a conveyance without charge. An auto road leads direct to the ranch.

"Dudes" at Boyd's Ranch are furnished with saddle horses at \$2 per day, or \$1 for less than a day. Guide service is provided at \$4.50 per day.





MAP OF THE
JACKSON HOLE & WIND RIVER REGIONS
 Showing Principal Dude Ranches
 Reached via Union Pacific System.

- Auto Roads
- Wagon Roads
- Trails

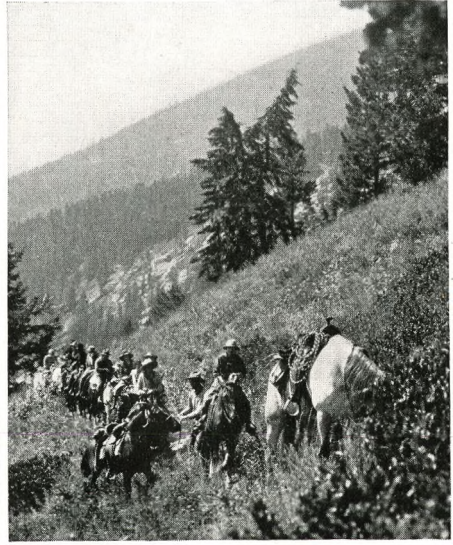
Copyright by Rand McNally & Company, Chicago

2-15-28

221



The Triangle F Ranch



Into the Wyoming Mountains

Fishing tackle may be rented through the management or purchased at Encampment. Well-stocked trout streams flow through the ranch acreage. Streams and lakes of the Medicine Bow and Snowy Range mountains, from 12 to 40 miles distant, are reached quickly by horseback or car.

Consult a Union Pacific representative concerning transportation and fares, and write to Frank Boyd, Boyd's Ranch, Encampment, Wyo., for reservations, giving him at least two days' notice before arrival.

BROOKLYN LODGE, a "Dude Ranch" near the timberline in the Snowy Range, is eight miles from Centennial and but a short walk from Brooklyn Lake.

The Lodge is 40 miles from Laramie on the Laramie-Brooklyn Lake Auto Road. Guests may leave Laramie for the Lodge by auto stage, or via L. N. P. & W. R. R. to Centennial. Mr. Jones will meet you at Centennial with a car, although he is, first of all, a horseman and the same "Hoot" Jones that used to ride at Frontier Days and other roundups. There is no charge for the trip.

The Lodge cabins command a view of grassy, pine-encircled slopes. Beyond lies mile upon mile of the Medicine Bow National Forest, intersected by marked Forest Service trails. The 14 log cabins, some with two and three rooms, are equipped with electric lights, stoves and comfortable beds. Two bath-houses provide hot and cold showers. A hundred lakes and as many trout streams make the Snowy Range country a fisherman's paradise. Brooklyn Lodge is centrally located, close to all of these lakes.

The Lodge management provides guides and saddle horses at reasonable rates. There is a large central hall where guests may dance and dine, and a living room with a cheery fireplace. Regular meals are served, and short orders at all hours. Fresh vegetables and fruits are on the menu. The ranch store sells candy, tobacco, licenses, fishing tackle, etc.

Rates are \$23 per week or \$3.50 per day, including cabin and board. Children under 10, half rate; under 4, no charge. For additional information, write to H. D. Jones, Brooklyn Lodge, Centennial, Wyoming.



V Bar V Ranch, Hoback Canyon



The White Grass Ranch

LIBBY LODGE is located at Barber Lakes, three miles from Centennial on the Brooklyn Lake Road. Streams have been diverted to form artistic, well-stocked, private fish ponds at the door of the main building.

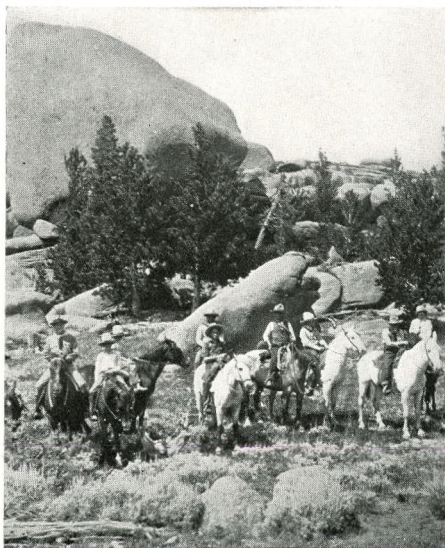
The lodge is in the heart of Wyoming's best fishing, accessible alike to the large lakes of the Laramie Plains and the Snowy Range Lakes. In season, bear, deer, sage chickens, ducks and grouse may be hunted successfully.

The rustic hotel and eight cabins accommodate approximately 65 guests. A large dance hall, spacious dining room, roomy lobby, hot and cold water in all rooms and cabins, private baths, electric lights and new equipment throughout insure comfortable and enjoyable vacations.

For daily and weekly rates write Manager, Libby Lodge, Laramie, Wyo. Children under 10 years will be charged half rate. Saddle horses and guide service are available, and scenic motor trips may be arranged. Trips to the Cheyenne Frontier Days are offered without extra charge. Guests will be met at Laramie (on the Union Pacific) or Centennial with a large comfortable car.

MEDICINE BOW BOYS' CAMP, located on the Diamond Ranch, near Rock River, Wyoming, 100 miles west of Cheyenne, offers a summer of healthful outdoor recreation to not more than 20 boys, 12 to 17 years of age. The Camp buildings lie in a beautiful canyon setting, adjoining the Medicine Bow National Forest. The boys sleep in log cabins at camp and in tepees on pack trips. Each boy is assigned a well-broken saddle horse for his exclusive use. Many fishing and pack trips will be taken, including one to the Frontier Days celebration at Cheyenne. J. Dewey Blank, experienced in boys' camp work and a member of the faculty of Post Road Junior High School, White Plains, New York, is Director and Manager. J. R. Swank, Assistant Director and Guide. The assistants are trained college men. Mrs. Blank is Hostess and Camp Mother.

The camp is reached via the Union Pacific System to Rock River, thence by automobile to the Diamond Ranch. Boys will be escorted from New York City, or picked up en route. The rate for the full season (July 3d to August 28th)



A Horseback Party from Bar ED Ranch



Brooklyn Lodge, Wyoming

is \$350. References are required. Ten adult guests may be accommodated in the large, modern ranch house of the Diamond Home Ranch which offers good meals, saddle horses, fishing and other outdoor recreations at \$40 a week. For further information address J. Dewey Blank, 43 Church Street, White Plains, N. Y., or J. R. Swank, Diamond Ranch, Rock River, Wyoming.

MEDICINE BOW LODGE is located on the scenic Snowy Range Highway, on the pine-clad western slope of the Medicine Bow National Forest. It is 18 miles southeast of Saratoga, Wyoming, at an elevation of 8,000 feet, and within walking distance of three fine trout streams. The 26 cabins, some of which are heated, and additional floored and sided tent houses, accommodate 150 guests. The daily menu includes fresh butter, eggs, milk, vegetables and choice meats. There is a bath house with hot and cold water. Sanitation is first class.

Fishing is the biggest attraction. Special pack trips to the Snowy Range, eight to ten miles away, are managed by skilled guides who do the cooking and handle the horses. Guides, \$10 per day; saddle horses, \$2.50 per day. Among the 100 lakes in the region are Marie, Lookout, Mirror, Glass, Libby, North Gap, South Gap, Telephone, Magnolia, Silver, Twin, and Lost Lake. Though small, they are very beautiful—crystal-clear, fed by melting mountain snows and surrounded by lovely wild flowers. In the limpid depths graceful trout may be seen darting about. The skillful angler easily catches his limit.

The weekly rate, including board, is \$21 for tents and \$24 for cabins. The daily rate, American plan, is \$3.50. Children under seven years at half rates. Guests are met at Laramie or Walcott, the nearest Union Pacific points. Address Plummer & Co., Proprietors, Medicine Bow Lodge, Saratoga, Wyoming.

MOUNTAIN VIEW HOTEL, operated by Mrs. Gustav Sundby, is located at Centennial, Wyoming; it is reached via the Union Pacific to Laramie and the L. N. P. & W. R. R., Laramie to Centennial, or by auto from Laramie. It is not a ranch but is ideally located for enjoyment of fishing and recreation.

Within one-half mile of the hotel are well-stocked trout streams. The famous Snowy Range lakes are within eight miles distance.



Medicine Bow Lodge

Mountain View accommodates 50 guests. Good meals are served at regular hours. Rates: American plan, \$2 and up per day, \$15 and up per week, and \$60 and up per month. Children under seven years are lodged at half rates. The management takes pride in the neatness of the hotel and in its excellent meals.

Saddle horses, \$2.50 per day, and guide service may be arranged for at the hotel. Camp requisites, fishing tackle and licenses are available at Centennial.

A regular patronage has, for the past few years, kept the Sundby establishment well filled. However, prospective guests, who communicate early with the management, will be able to arrange for a stay.

THE OPEN B RANCH (Brand B) is just a typical ranch home—though an especially roomy one with all modern features which can share its home atmosphere with 10 guests. It is 35 miles northward from Medicine Bow, a Union Pacific main-line point, via an excellent road.

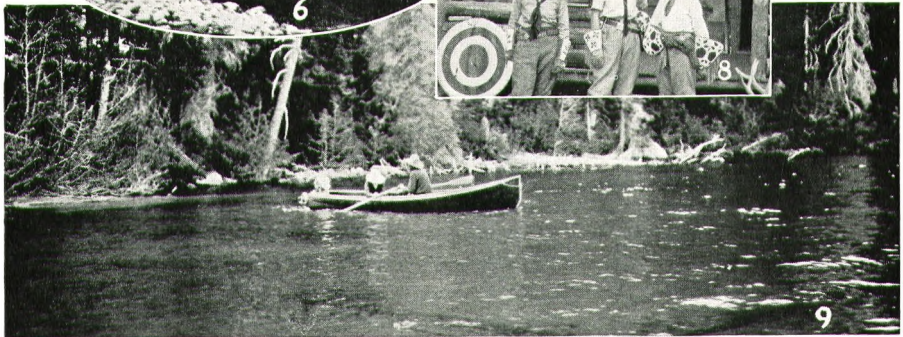
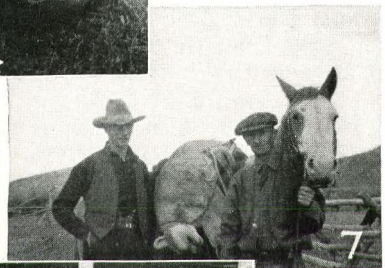
Fine saddle horses await you at the Open B and Ira S. Bean, the proprietor, supplies guide service for fishing, hunting or sightseeing parties. Interesting automobile trips to Pathfinder Dam, Laramie Peak and Elk Mountain are featured, at reasonable rates.

The Open B Ranch is right in the mountains. Its forested and open spaces are very attractive to the outdoor man or woman. A splendid trout stream crosses the ranch grounds. Guests are housed in Mr. Bean's up-to-date ranch house, in a separate bungalow, or in tent houses. All guests dine at the main building. Rates are \$3 a day; saddle horse hire \$1 a day additional. Dancing may be enjoyed in the evenings. Camp Iloda for girls is conducted as a separate unit on the Ranch by Miss Dorothy Bean.

There is bi-weekly mail stage service to the Open B Ranch. Trips are made with the ranch auto for 20 cents per mile.

The Open B especially invites teachers and those wishing to "camp out" inexpensively for a few weeks.

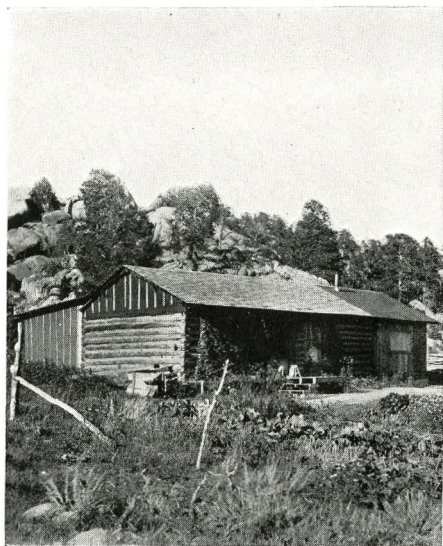
Write Ira S. Bean, Marshall, Wyoming.



1. Roping Your Mount
2. SLW Ranch
3. A Horseman from the El-bo

4. Pet Antelope, SLW Ranch
5. At Skyline Ranch for Boys
6. A Trout Stream Near Boyd's Ranch

7. A Lion Hunt at the A Bar A
8. Three Fair Dudeens
9. A Lake in the Wilderness



At the RG Ranch



A Lynx Killed in Jackson Hole

THE RG RANCH (Brand RG) is forty miles northeast of the town of Rock River, on the Union Pacific System, lying among the fragrant pines and cedars of the Laramie Mountains, 14 miles west of Laramie Peak. It is reached by auto stage, leaving Rock River twice a week, or guests will be met at the station by the ranch management, if desired.

The large ranch house and detached rustic cabins comfortably accommodate 10 persons. The RG has its own vegetable garden and good, home-cooked meals are served family style. There is good trout fishing in nearby streams. Horseback or hiking trips, with guides, may be arranged.

The great, restful hills, with their interesting rock formations, profusion of wild flowers, numerous Indian relics and much more that must be seen to be appreciated, offer the urban dweller who loves the outdoors a refreshingly "different" vacation that is not expensive.

Rate \$3.50 per day; saddle horses \$2.50 per day. Charges for guide services on application. References given on request. The ranch is open to guests during July and August and the fall deer hunting season, and especially invites the business girl. Make reservations in advance. For further information address R. N. Garrett, Garrett P. O., Wyoming.

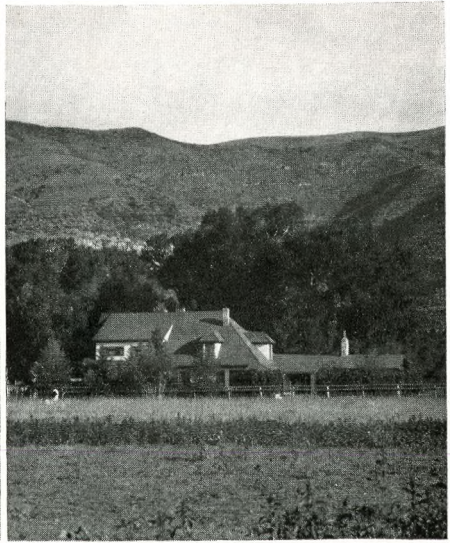
SKYLINE RANCH FOR BOYS is in a valley between the Continental Divide and Medicine Bow Range, and is reached via Union Pacific from Walcott, Wyoming, thence to Encampment, Wyoming. The ranch adjoins Hayden National Forest, where there is excellent trout fishing and abundant game. This forest is a summer sheep and cattle range and offers an opportunity for the boys to study forestry, grazing and the care of range stock.

Medicine Bow National Forest, whence the Union Pacific Railroad obtains thousands of ties, is also close at hand. Trips are made to the tie camps, to study this interesting phase of railroading. Several rugged peaks in this great forest offer excellent climbs.

Riding is the feature emphasized, the ranch having many fine saddle horses. The summer is spent in pack trips through this fascinating region of forest and



The Y-Cross Ranch



The Boyer YL Ranch

plain. With a real ranch site and buildings, and real leaders who know the old West, the Skyline Ranch for Boys is doing everything to foster the frontier spirit in the American boy.

Regular summer season June 26 to August 21, boys only, \$400 including all expenses. The ranch offers several special trips for boys only, or boys and men, at rates ranging from \$40 to \$200; also big-game hunting trips for men (rates on application). For full information write Cliff Higby, Managing Director, Skyline Ranch for Boys, Encampment, Wyoming.

TWIN RIVER RESORT, less than two miles from Centennial, Wyoming (reached via Laramie, Wyoming, on the Union Pacific), is a group of rustic cottages in an aspen and pine grove through which tumbles a clear mountain stream. The cabins accommodate 40 "dudes." Overflow guests are lodged in neat-appearing, comfortable floored tents.

Pure spring water, good sanitation and bathing facilities are provided. Guests wishing to dance in the evenings may have use of a small dance floor. The ranch has a good tennis court, and a well-stocked store where guests may purchase tobacco, soft drinks, fishing tackle, etc.

The management provides fine saddle horses at \$2.50 per day. Good horseback trails lead to Brooklyn Lake Ridge, Lookout Mountain and Medicine Bow Peak (altitude 12,005 feet). One may visit all these points in a day and return to the ranch before nightfall. The trout streams but a few yards distant from the ranch houses are, however, just as sure to repay the angler as are those farther away. Other streams and lakes of the Snowy Range, all well stocked with trout, are within easy reach of the fisherman.

The rates, American plan, are \$3.50 per day and up for cabin rooms; \$3 per day and up for accommodations in tent houses. Children under 12 years are charged half rates. Write the Twin River Resort, Centennial, Wyoming, for detailed information and reservations.



In the Snowy Range of Wyoming

WRIGHT'S RANCH is 23 miles west of Laramie on a good auto road, and one-half mile from Filmore Crossing, a stop on the L. N. P. & W. R. R. connecting with the Union Pacific at Laramie. Transportation from Filmore is furnished free to guests by the ranch management.

A good trout stream runs within a few yards of the ranch house. Fishing tackle may be rented at the ranch or at Filmore. An auto road, one-half mile distant, leads to the lakes at the foot of Snowy Range, 16 miles away. Other smooth roads and trails penetrate the surrounding country which affords good hunting and fishing. Beauty spots in the nearby foothills, as well as in the glaciated peaks of the Snowy Range, attract visitors who enjoy hiking and kodaking. From the eminences of Jelm Mountain, Sheep Mountain, Lookout Peak, Brooklyn Lake Ridge, and Medicine Bow Peak, wonderful panoramas of mountain and plain are unfolded.

Wright's Ranch offers a home-like atmosphere, excellent home cooking, and courteous, thoughtful service.

There are 16 rooms available, accommodating 40 "dudes." The monthly rate, American plan, is \$60 (half rates for children); rates daily \$3, weekly \$18. Tents are provided for overflow guests. Guests desiring to dance may use victrola. Saddle horses, \$2 a day. Address G. L. Wright, Filmore, Wyoming.

WYOMING SPRINGS RANCH adjoins the Medicine Bow National Forest and is in the Centennial Valley, midway between Albany and Centennial, Wyo. Mr. L. H. Merrihew, the proprietor, has four log cabins for rent at \$1.75 per day and saddle horses for hire at \$2.50 per day. The rustic cabins contain stoves and mattress beds.

Guests may bring their own camp cooking outfits and are expected to prepare their own meals. There are swings and recreational features for children. The ranch offers less complete service than some ranches, and its prices are in accord with services provided.



The Cary Ranch, Colorado

The trout streams of the Medicine Bow National Forest and the Snowy Range lakes are but a few miles distant. The water from the springs (giving the ranch its name) is soft, pure and cold.

The ranch is reached via Union Pacific to Laramie, thence via the Laramie, North Park & Western Railroad to Spring Creek Station; also by two auto roads from Laramie. Make arrangements in advance by correspondence with Edgar Davidson, Manager, Wyoming Springs, via Albany, Wyoming.

Y-CROSS RANCH (Brand ♀) is located at Horse Creek, Wyo., 35 miles northwest of Cheyenne, on the Colorado & Southern Railway. The two-story ranch house has hot and cold water, electric lights, two bathrooms, comfortable sleeping rooms, fireplaces, living room and splendid ballroom. It accommodates between 10 and 25 guests. The season is from June 1st to October 1st.

There is a lake at the ranch door and excellent fishing in near-by lakes and streams. A general store, a post office and a telephone and telegraph office are within a mile of the Y-Cross. Mail is delivered at the ranch daily.

The Y-Cross has its own garden and dairy and excellent spring water. Horses are available for trips into the scenic surrounding country or for hunting, fishing or pack trips. The rate is \$35 a week for room and meals; guide \$5 a day; saddle horse \$3.50 a day; laundry \$1.50 a week. Write J. C. Monday, Y-Cross Ranch, Horse Creek, Wyoming, for reservations.

THE BOYER YL RANCH (Brand ♂) beautifully situated in the foothills of the Sierra Madre (Rocky) Mountains, accommodates a limited number of guests. The charming, rustic ranch house, has modern conveniences, including electric lights and baths. The products of the ranch gardens, dairy and stock herds, with fish and game in season, provide delicious meals. The surrounding country is wild and picturesque, affording excellent fishing and hunting. Guests wishing to hunt or fish should come fully equipped. The Ranch provides excellent western horses and thoroughbreds for pack trips, riding and polo. Special care is taken to provide gentle mounts for inexperienced riders.



The Double M Ranch



The Saddle Pocket Ranch

The ranch may be reached from Parco or Rawlins, Wyoming, via the Union Pacific System. Guests will be met with ranch motor car by arrangement.

Owing to the limited accommodations and necessity for congeniality, satisfactory references are required. For further information, rates and reservations, address J. St. A. Boyer, Manager, Savery, Wyoming.

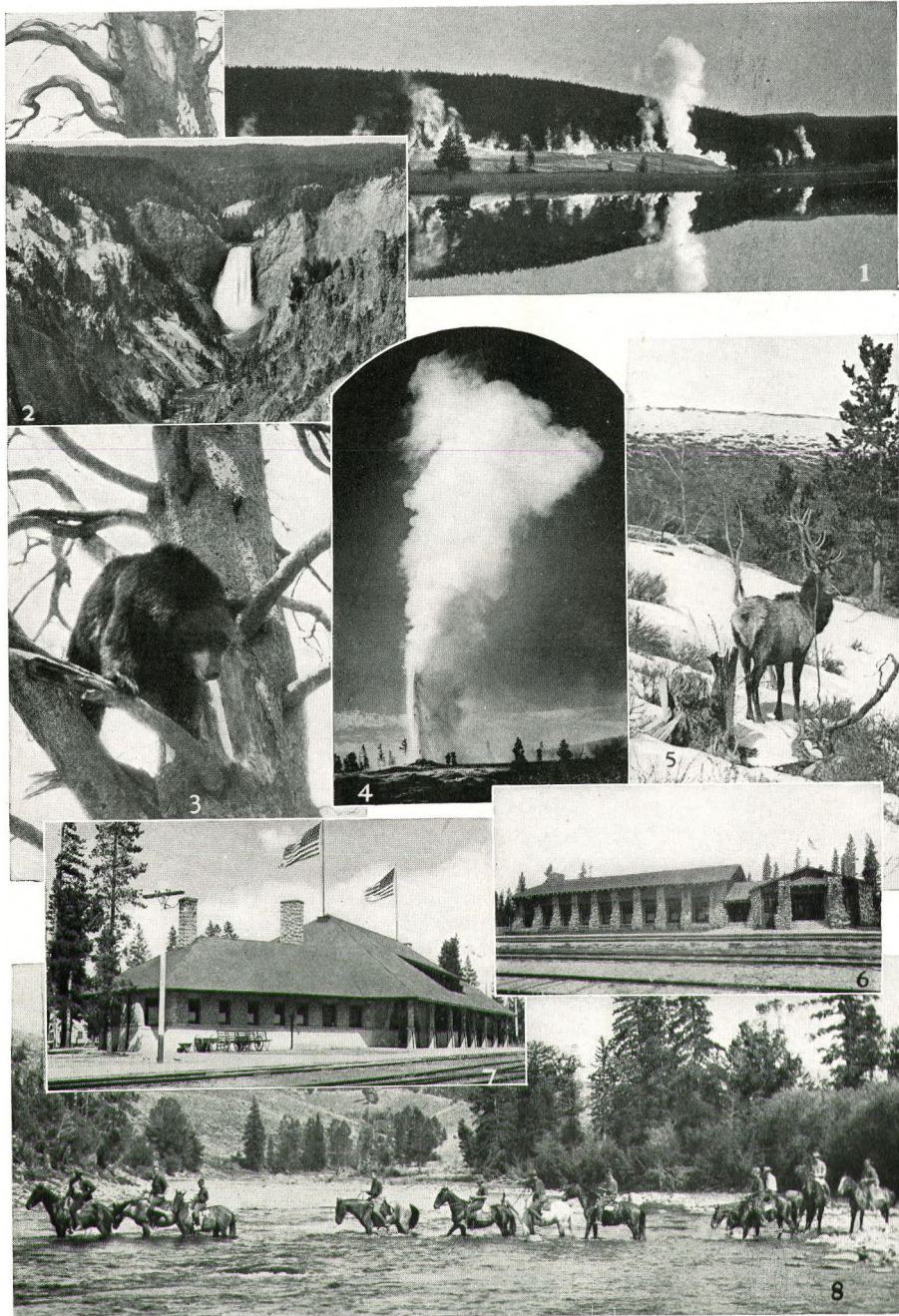
Colorado Ranches

CARY RANCH (Brand ∞), between Hayden and Craig, Colorado, is a stop on the D. & S. L. Ry., 242 miles west of Denver (special summer rate of \$18 for round trip from Denver). It may also be reached via Union Pacific to Wamsutter, Wyoming, thence via motor bus (daily, except Sunday) to Baggs, Wyoming, thence by connecting motor bus, Mondays, Wednesdays and Fridays to Craig, Colorado, where guests will be met by arrangement.

Cary Ranch is not a modern social resort but a real cattle ranch in the heart of the Rockies of western Colorado, between White River National Forest and the Routt National Forest, where it has established Camp Cary. The ranch accommodates a limited number of guests during the season, May 15th to October 30th. The rate is \$35 per week or \$100 per month, with saddle horse extra at \$2.50 per day or \$50 per month, and guides at \$5 per day. Make reservations well in advance with Cary Ranch Co. Main Office, 716 Foster Bldg., Denver, Colorado. The management will furnish booklet on request.

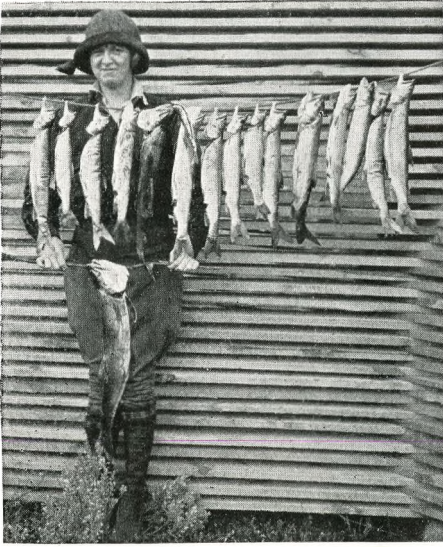
The ranch has its own poultry, milk and garden. Fishing for trout and hunting large and small game in season is very good in this section of Colorado.

DOUBLE M RANCH (Brand \mathcal{M}) is, more strictly speaking, a summer resort operated in ranch style, situated near the historic mining town of Gold Hill, Colorado. The rustic main building, in an attractive scenic setting, accommodates 35 guests. Rooms have comfortable beds and are equipped with hot and cold water, lavatories and bath. There are also cabins for families or individuals. The best of foods is supplied—fresh milk, butter, fruit and vegetables.



1. Upper Geyser Basin © J. E. Haynes
 2. Grand Canyon of the Yellowstone
 3. One of Yellowstone's Bears
 4. Old Faithful Geyser

5. Elk in Winter
 6. Union Pacific Dining Lodge, West Yellowstone
 7. Union Pacific Station at West Yellowstone, Mont.
 8. Horseback Party in Yellowstone Park



Most Dude Ranches Offer Good Fishing



Big Springs Inn, Idaho

Camping parties, with competent guides, complete equipment and good saddle horses, are planned for guests. Automobile trips are arranged to Estes-Rocky Mountain National Park, Pikes Peak Region, Grand Lake, Idaho Springs, Mt. Evans, and to Cheyenne during Frontier Days; also special fishing trips. Rates, \$21 and up per week. Reservations must be made in advance. There is a daily stage from Boulder, Colorado (on the Union Pacific), or cars will meet guests upon advance notification. Address Florence C. Molloy, President, Molloy Hotel and Scenic Tours, 1019 Spruce Street, Boulder, Colorado.

THE SADDLE POCKET RANCH (Brand $\Delta\Delta$), comprising several thousand acres, and one of the oldest producing cattle ranches in northwest Colorado, lies near the Wyoming line in the valley of the Little Snake River.

Guests are accommodated in the comfortable ranch house, affording a splendid view of the mountains, and equipped with hot and cold running water, electric lights and bath. The table is supplied with fresh vegetables, milk, butter, eggs, and meat, all raised on the ranch.

Guests are made at home and may take their choice of joining in the ranch activities, hunting, fishing, exploring, or simply resting. A lodge is maintained 15 miles away in Wyoming as a camping headquarters. The Little Snake and Battle Creek, both in sight of the ranch house, are well stocked with trout. Many other trout streams are easily accessible by automobile. There is good swimming in the river. Splendid saddle horses are kept, and experienced guides are provided for special trips to the mountains.

The ranch is reached via Parco, Wyoming, on the Union Pacific System, or via D. & S. L. Ry. from Denver to Steamboat Springs. Guests are met at either station. References are given and required.

Rates are quoted upon application stating the number in the party. Make reservation at least thirty days in advance, as only about 12 guests can be accommodated at one time. Prior to April 1st, address inquiries to R. D. Salisbury, 719 Home Avenue, Oak Park, Illinois. After that date, address Saddle Pocket Ranch, Battle Creek, Colorado.



A Fine Catch at Bowers Ranch, Idaho

THE SLW 9,000-ACRE RANCH (Brand SLW), 10 miles east of Greeley, Colorado, on the Great Plains, offers attractive accommodations and homelike hospitality to 15 guests. The ranch has been operated by the Witwer family for the past 28 years. Take the Union Pacific to Greeley.

Guests are quartered in airy rooms in the large, two-story ranch house, which has running water and modern bath rooms. There is a cement swimming pool. The food is wholesome and varied; the ranch has its own vegetables, fruit, milk, butter and eggs. The management offers to guests an opportunity to enter into or observe real cattle ranch life in a scenic country. Auto trips to Rocky Mountain National Park, Denver, and elsewhere, may be arranged at reasonable rates. The ranch is 60 miles from Estes Park Village.

The regular rate is \$35 a week; private saddle horse or pony, \$10 a week additional. The ranch is open all year and quotes special winter rates.

Reservations should be made well in advance. References are appreciated and exchanged. For full details write to SLW Ranch, Greeley, Colorado.

Idaho Ranches

BIG SPRINGS INN, one-eighth of a mile from Big Springs, Idaho (on the Union Pacific System), is not a "dude ranch," strictly speaking, but an outing, fishing and hunting resort, open from June 1st to November 1st.

The rustic log hotel with its 10 bedrooms, the six cabins and 10 floored and sided tent houses accommodate 45 guests. All are electric lighted. The inn serves meals, family style, specializing in trout dinners; but guests, who so desire may cook their own meals over camp-fires, or indoors in a place provided for this purpose. The hotel store sells gasoline, oil, tobacco and incidentals. Nearby streams furnish good trout fishing, and Henry's Lake, a famous fishing water, is only nine miles distant; an automobile is provided to take guests to and from the fishing streams. Large and small game may be found close at hand during the open seasons.



Little Red Fish Lake, Sawtooth Mountains, Idaho

Main-line Union Pacific trains from east and west make connections at Pocatello, Idaho, for Big Springs, during the Yellowstone Park Season, approximately June 20th to September 19th. Big Springs Inn, because of its nearness to West Yellowstone, Montana, is an ideal place to visit on a Yellowstone tour.

Rates are \$3 per day and up; special family rates upon application. For further particulars address J. W. Kooch, at St. Anthony, Idaho, from December 1st to June 1st; June 1st to November 31st at Big Springs Inn, Guild Post Office, Big Springs, Idaho.

BOWERS' RANCH is 18 miles from West Yellowstone, Union Pacific entrance to Yellowstone National Park, on the shore of Henry's Lake, Idaho. It offers comfortable cabin accommodations and excellent meals for 40 people; it has electric lights, shower and tub baths and Ranger telephone, connecting with commercial system. Mr. Bowers outfits hunting and fishing parties on advance notice, supplying boats, tackle, saddle horses and teams, and will arrange to meet parties at West Yellowstone, Montana. The resort may also be reached by auto stage from West Yellowstone, or from Monida, also on the Union Pacific line and 60 miles distant. Rates, \$3.50 per day, \$20 per week. Proprietor, William Bowers, Lake P. O., Idaho.

ELKHORN LODGE lies at an altitude of nearly 7,000 feet on beautiful Alturas Lake, in the upper Stanley Basin, 45 miles from Hailey, Idaho, and 37 miles from Ketchum, Idaho, both Union Pacific stations. It is in the heart of the Sawtooth National Forest, at the foot of the rugged Sawtooth Mountains.

Guests occupy log cabins, separated from the main lodge and dining hall. Good, home-cooked meals are served in family style. Fresh milk, butter, eggs and vegetables are always on the menu. The chief diversions are boating, swimming and horseback expeditions to points of interest. Special pack trips are offered to the Middle Fork of the Salmon River, one of the wildest, most remote regions in the country, affording unsurpassed trout fishing. This trip requires about two weeks. Shorter trips are also offered to many scenic regions.



Mack's Inn, Trude, Idaho

Rates for meals and lodging are \$3.10 per day; rowboats, \$2 a day; with boatman, \$6 a day; saddle horses, \$2 for full day of eight hours; guides, regardless of size of party, \$4 a day. All these may also be hired by the hour. Motor boats, \$2 an hour for party of four or less. Pack trips, including guide, cook, saddle, pack horses and all equipment except bedding, \$10 a day for one person, \$18 a day for two, \$7 each for three or more persons.

Parties will be met at Hailey or Ketchum. Make reservations at least two weeks in advance. Address Ned Foster, Elkhorn Lodge, Obsidian, Idaho.

MACK'S INN. The rustic cabins and trim tent houses of Mack's Inn (operated by W. H. Mack, Trude, Idaho), accommodate 75 people. The inn, reached by a main traveled highway, is on the Snake River near Trude. A ranch auto will meet guests at the Trude railroad station.

Fishing is good near Trude, which is on the Yellowstone branch of the Union Pacific System, 21 miles from Yellowstone National Park. Mack's is four miles from Mt. Sawtelle, where elk, deer and bear are found.

The inn serves good meals, but guests who pitch their tents in its camp grounds may cook their own meals if they so desire. The inn supplies ice, fresh vegetables, milk and fruit. "Dudes" at Mack's Inn may rent boats at 25 cents per hour, or \$1 a day. Guides and saddle horses are available. Gasoline, tobacco, candy and other supplies may be purchased. Boat trips on nearby fishing waters are very enjoyable. Pack trips may be made into the rugged game country north and west of Yellowstone Park.

Mack's Inn is not essentially a "dude ranch" but a summer outing resort, providing reasonable accommodations and service as indicated.

For rates and details, write W. H. Mack, Trude, Idaho.

NEISS INN is not strictly a "dude ranch" but an outing resort accommodating 15 guests. It is located on the Snake River, 19 miles north of Ashton, Idaho. Ashton (where the American Dog Derby is staged annually in February) on the



Plunge at Elkborn Hot Springs, Montana

Yellowstone Branch of the Union Pacific System, and is west of the Teton Range in a good fishing and hunting territory.

Occupants of the several Neiss Cottages and floored tent houses may cook their own meals if they wish. Appetizing home style meals are served, however, by the management. There are large lounging rooms and a library. Boats, horses and guides are available. The ranch store sells gasoline, clothing and tobacco. The Neiss automobile meets guests at Ashton by arrangement.

Trips to Henry's Lake and other famous Idaho fishing places are handily made from the Neiss Ranch by automobile or pack train. The surrounding country is remarkable for its scenic attractions and ideal for hunting and fishing.

Write Harry Neiss, Ashton, Idaho, for rates and details.

Montana Ranches

CAMP FIRE INN, conducted by Mrs. Bertha Miller, is half a mile from the Hebgen Dam, 25 miles down the Madison River from West Yellowstone, Montana, Union Pacific entrance to Yellowstone Park. It lies in the vast forest of fir and spruce, untouched by fire. The backwaters of the dam form a beautiful artificial lake, teeming with large trout and covered with ducks. The table is noted for its delicious home cooking, all baking being done by Mrs. Miller herself. There is abundant fresh milk, fresh fruits and vegetables in season.

Saddle horses, automobiles, motor boats and rowboats may be hired. The rate is \$6 a day for one person, \$35 a week each for two, or \$60 a week each, including horses and complete equipment for outings, camping and fishing.

While not a "dude ranch," Camp Fire Inn offers recreation and accommodations of the dude ranch type. Its proximity to West Yellowstone renders it particularly convenient to visit on a tour of Yellowstone Park. Camp is open from May 20th (opening of the fishing season) to October 20th. For further particulars write Mrs. Bertha Miller at her winter address, 144 Kimball Apartments, Salt Lake City, before April 20th; thereafter, at Camp Fire Inn, Grayling, Mont.



Children Enjoy Dude Ranch Life

ELKHORN HOT SPRINGS HOTEL is 22 miles west and 18 miles north of Dillon, Montana, in the Beaverhead National Forest. It is a two-story, rustic log structure, containing 12 comfortable guest rooms, an immaculate kitchen and dining room and a spacious lobby with fireplace and easy chairs.

The meals are wholesome and appetizing. Fresh vegetables, milk, meat and eggs are supplied daily. Log cabins and floored tents are available for campers, who may board at the hotel or purchase groceries at the camp store, which also provides fishing tackle, outing supplies and mail service. The invigorating and curative waters of Elkhorn Hot Springs are piped into two sanitary plunges and the bath house. No charge is made for their use.

The surrounding region of lofty, snow-crowned mountains and primeval pine forests is an ideal outdoor playground. Mountain trout are plentiful in the numerous sparkling streams and lakes. Not far away is the deserted "ghost city" of Bannack, reminiscent of the Montana gold rush 60 years ago.

Guests are met at Dillon, Montana, on the Union Pacific System. The rate is \$4 a day or \$25 a week. Cabins \$2 a day and up. Children under 10, half rate. Guides and well-broken saddle horses provided at reasonable rates. Write to Edward E. Hazel, Anaconda, Montana, for detailed information.

ELKHORN RANCH is located in a beautiful grassy pocket high up in the mountains, 40 miles from West Yellowstone, Montana. It accommodates 40 guests. This ranch is one of the best-equipped in Montana, possessing 150 saddle horses and plenty of experienced guides. It conducts pack trips and hunting parties in season. The rate is \$70 a week, which includes everything except conducted pack trips, for which special rates are made according to the nature of the trip. The fishing is excellent.

Address Ernest Miller, Manager, Elkhorn Ranch, Bozeman, Montana.

THE GILMER TX RANCH (Brand TX) is in the Madison Valley, between Cameron and Ennis on the Vigilante Trail, 70 miles from West Yellowstone, Montana. It is a producing cattle ranch, offering comfortable accommodations and excellent meals to 6 guests. The ranch has gas lights, and bathing facilities.



The Swimming Pool at Diamond-and-a-Half Ranch, Oregon

There is good fishing and hunting close at hand. The stream on the ranch contains mountain trout. Summer camping trips and big-game hunting trips in season may be arranged, also motor trips to Yellowstone Park. Rates are \$50 a week, which includes the use of saddle horses. Extra expense for guides and equipment on special trips is shared pro rata by the members of the party.

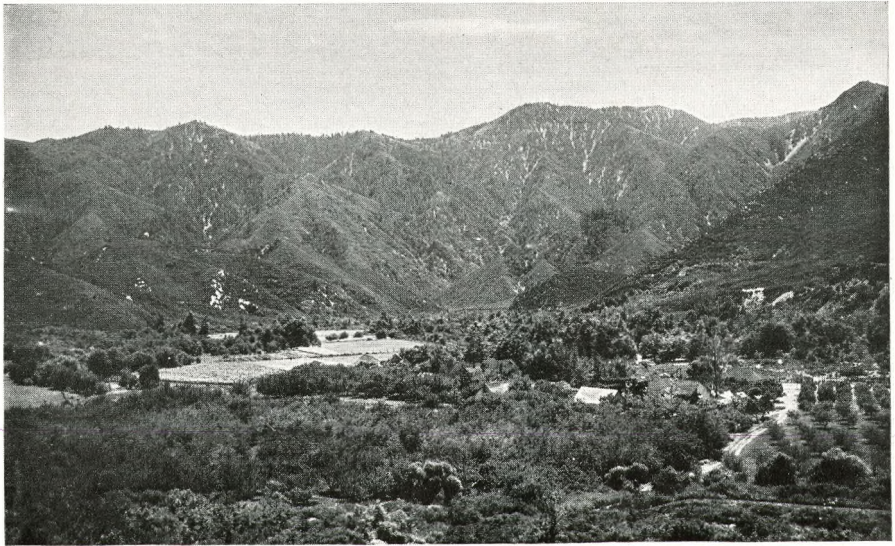
There is a stage line from Dillon and Butte, on the Union Pacific System, to Ennis. Guests will be met at Ennis or West Yellowstone by the ranch motor by arrangement. Personal references are required from prospective guests. For complete information address Mrs. A. E. Gilmer, Owner, Ennis, Montana.

In Oregon

DIAMOND-AND-A-HALF RANCH (Brand \diamond). Mountains, forests, rivers, the open range, horseback riding, fishing, pack trailing, hunting—these are among the attractions offered by Diamond-and-a-half Ranch.

Diamond-and-a-half is in the Blue Mountain region on the old Oregon Trail, near Hereford, Oregon, 40 miles southwest from Baker, a Union Pacific station. The ranch can accommodate a limited number of guests from May to October in its large frame ranch building and adjacent cabins. Special arrangements may be made for year 'round stay. There is a bath house with hot and cold showers. There are 20,000 acres in the family ranches of the Diamond-and-a-half, much of it a scenic semi-mountainous wilderness, delightful for pack trips, hunting and fishing expeditions. Real cattle ranching and farming is carried on, an interesting sight for many visitors. There is a half-mile circle race track on the ranch, where races and cowboy stunts are staged. A trip to the Pendleton, Oregon, Roundup in September can be arranged for guests.

The rate is \$50 per week or \$475 for 10 weeks. For complete information, exchange of references, etc., address Diamond-and-a-half Ranch, Hereford, Oregon, or Mr. Thomas Whited, Eastern Office, Diamond-and-a-half Ranch, 304 West 78th St., New York City.



Glenn Ranch, in Southern California

California Ranches

GLENN RANCH. Horseback trips out of Glenn Ranch, 20 miles from San Bernardino, California, are packed with pleasure. The rolling, forested mountains delight the lover of scenery.

The ranch house has electric lights. Housekeeping tents are close by on the shady banks of Lytle Creek. At Glenn Ranch the conveniences of a modern home are at your command. There is a swimming pool and a completely stocked store. In the new hotel each room has bath and toilet. Rates for rooms are \$1.25 to \$2 per day; special rates by the week. Rates for housekeeping tents are \$10 to \$16 per week, exclusive of meals. There is a modern cafe, meals 50c to \$1.00. Round trip auto stage fare from San Bernardino (on the Union Pacific) is \$2.50. The outdoor fireplace, the free evening dances the cement tennis court and like attractions give Glenn Ranch a recreational character of its own. The ranch has its own dairy herd and its own vegetables and fruit. Write to T. L. and Seymour Tally, Glenn Ranch, San Bernardino, California.

WHEELER'S HOT SPRINGS, a diversified ranch-resort in the Ventura Mountains, is 90 miles by auto from the Union Stage Depot at Fifth and Los Angeles streets, Los Angeles. It is in Ventura County, in the Santa Barbara National Forest, and may also be reached by stage from Ojai, on the S. P. R. R.

Its curative waters, scientific health treatments, and havens of restful recreation attract many, but it offers a vigorous "boots and saddle" existence for those who want it. Forty reliable mounts are available for mountain trips. Competent guides will show you the scenic beauties of Pratt Trail leading over the divide into Ojai Valley or of Skyline Pine Mountain, Castle Gorge and other trails.

The streams dashing between the rugged oak-clad hills are great for trout. Deer hunting in season is good.

Tennis and other outdoor games may be enjoyed at Wheeler's. An open-air swimming pool is featured. Dances are held in the evenings. Rates are as follows: frame cottage, \$24 to \$34 per week; tent cottage, \$23; saddle horse, \$4.50 per day. Address Wheeler's Hot Springs, Ventura County, California.



A Western Trout Stream Is a Joy to the Angler

Why Your Journey Should Be Via Union Pacific

UNION PACIFIC SERVICE. The Union Pacific operates fast fine through trains from Chicago via Omaha, and from St. Louis via Kansas City to all the "Dude Ranch" regions described herein. It has the best and fastest service to Ashton and Victor, Idaho, and West Yellowstone, Montana. Fast through trains leave Chicago, St. Louis, Omaha and Kansas City daily for the principal cities of the West, including Los Angeles, San Francisco and Portland. They carry the latest and best equipment, including new type observation and dining cars; Union Pacific dining car service is of high excellence and reasonable in price. The Union Pacific from Omaha to Ogden and Salt Lake City is double track. All its lines are protected by automatic electric safety signals. Its smooth roadbed is ballasted with clean, resilient Sherman gravel.

Through tickets to Yellowstone Park and the Pacific Coast permit visits to Denver and Colorado Springs without extra rail fare. This makes it possible to enjoy a tour of Rocky Mountain and Yellowstone National Parks in connection with a trip to the "Dude Ranch" regions without a cent of additional rail cost.

Any representative listed on page 47 will gladly give full information concerning routes, train service, fares, stop-overs, etc., and will furnish any of the following illustrated booklets upon request:

- ✓ Yellowstone National Park
- Zion-Grand Canyon National Parks,
- Bryce Canyon
- ✓ Unknown Places in Idaho

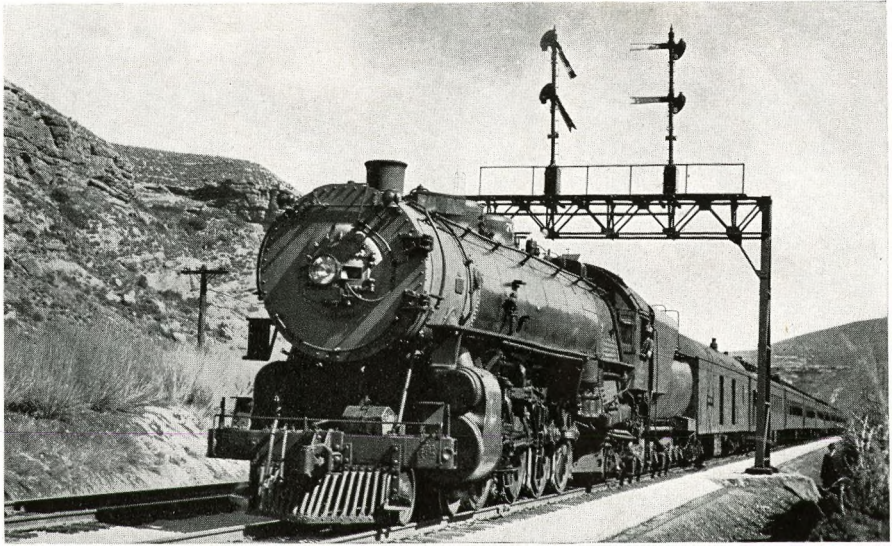
- Colorado Mountain Playgrounds
- ✓ The Pacific Northwest and Alaska
- ✓ California
- ✓ Along the Union Pacific System
- ✓ Utah-Idaho Outings
- ✓ United States Folder Map

WHAT TO EXPECT. Most of these "Dude Ranches" offer simple comforts and a choice of rugged outdoor exercise or quiet relaxation in beautiful scenic country; not elaborate superfluities and country club social activities. Read the folders issued by them. Some offer more refinements than others.

The Union Pacific believes its statements, as set down herein and verified as far as possible, to be reliable; but it cannot guarantee them, as it has no part in their management. Persons interested should correspond in advance with the dude-ranch managers.

REMEMBER to inform the "Dude Rancher" well in advance of the exact time of your arrival. Usually he lives some distance from the station, and he is always busy.

WHAT TO WEAR. Felt hats, wool shirts, khaki trousers or riding breeches, puttees and heavy walking shoes are about right for ranch life. Those planning pack trips to higher altitudes should have warm underwear, sheepskin jackets, sweaters, gloves, etc. Keep in mind the cold nights, the warm mid-day sun, possible rain and snow, and outfit accordingly.



A Union Pacific Limited Train in Echo Canyon, Utah

AN INDEX TO THE DUDE RANCHES

| THE JACKSON HOLE REGION, WYOMING | | Page | | Page |
|---|----|---------------------------------|----|------|
| Bar BC Ranch | 5 | Brooklyn Lodge | 26 | |
| Castle Rock Ranch | 6 | Libby Lodge | 27 | |
| Circle H Ranch | 6 | Medicine Bow Boys' Camp | 27 | |
| Crescent Lazy H Ranch | 6 | Medicine Bow Lodge | 28 | |
| Cross and Crescent Ranch | 7 | Mountain View Hotel | 28 | |
| Danny Ranch | 8 | Open B Ranch | 29 | |
| DC Bar Ranch | 8 | RG Ranch | 31 | |
| Double Diamond Ranch | 9 | Skyline Ranch for Boys | 31 | |
| El-bo Ranch | 9 | Twin River Resort | 32 | |
| Flag Ranch | 10 | Wright's Ranch | 33 | |
| Flying Diamond Ranch | 10 | Wyoming Springs Ranch | 33 | |
| Flying V Ranch | 10 | Y-Cross Ranch | 34 | |
| Green River Lake Lodge | 11 | YL Ranch | 34 | |
| Green River P-Tree Ranch | 12 | | | |
| Jackson Lake Lodge | 12 | COLORADO | | |
| JY Ranch | 13 | Cary Ranch | 35 | |
| Leek's Camp | 14 | Double M Ranch | 35 | |
| Moran-Teton Lodge | 15 | Saddle Pocket Ranch | 37 | |
| Red Rock Ranch | 15 | SLW Ranch | 38 | |
| Sargent's Inn | 17 | IDAHO | | |
| STS Ranch | 17 | Big Springs Inn | 38 | |
| Trail Ranch | 18 | Bowers Ranch | 39 | |
| Triangle F Ranch | 19 | Elkhorn Lodge | 39 | |
| Triangle X Ranch | 19 | Mack's Inn | 40 | |
| V Bar V Ranch | 20 | Neiss Inn | 40 | |
| Warbonnet Ranch | 20 | MONTANA | | |
| White Grass Ranch | 21 | Camp Fire Inn | 41 | |
| CONTINENTAL DIVIDE AND SNOWY RANGE REGION, WYOMING | | Elkhorn Hot Springs Hotel | 42 | |
| A Bar A Ranch | 21 | Elkhorn Ranch | 42 | |
| Bar ED Ranch | 23 | Gilmer TX Ranch | 42 | |
| Boyd's Ranch | 23 | OREGON | | |
| Boyer YL Ranch | 34 | Diamond-and-a-Half Ranch | 43 | |
| | | CALIFORNIA | | |
| | | Glenn Ranch | 44 | |
| | | Wheeler's Hot Springs | 44 | |

Representatives of the Union Pacific System

| | |
|-----------------------|--|
| Aberdeen, Wash. | 3-4 Union Pass'r Sta., K and River Sts., F. E. STUDEBAKER, Dist. Freight and Pass'r Agt. |
| Astoria, Ore. | Union Pacific System Wharf, G. W. ROBERTS, District Freight and Passenger Agent |
| Atlanta, Ga. | 1232 Healey Building, W. C. ELGIN, General Agent |
| Bend, Ore. | E. H. McALLEN, Traveling Freight and Passenger Agent |
| Birmingham, Ala. | 742 Brown-Marx Bldg., 1st Ave. and 20th St., J. H. DOUGHTY, General Agent |
| Boise, Idaho | City Ticket Office, 823 Idaho Street, JOEL L. PRIEST, General Agent |
| Boston, Mass. | 207-8 Old South Bldg., 294 Washington St., WILLARD MASSEY, General Agent |
| Butte, Mont. | 229 Rialto Bldg., 4 South Main St., HENRY COULAM, General Agent |
| Cheyenne, Wyo. | Union Pacific Station, N. A. MILLER, Ticket Agent |
| Chicago, Ill. | City Ticket Office, 6 S. LaSalle St., Otis Bldg., G. R. LEMMER, Gen'l Agt., Pass'r Dept. |
| Cincinnati, Ohio | 705-6 Dixie Terminal Bldg., Fourth and Walnut Sts., W. H. CONNOR, General Agent J. STANLEY ORR, District Passenger Agent |
| Cleveland, Ohio | 941 Union Trust Bldg., 925 Euclid Ave., W. H. BENHAM, General Agent |
| Council Bluffs, Ia. | City Ticket Office, Chieftain Hotel, 36 Pearl St., H. B. ELLER, City Ticket Agent |
| Dallas, Texas | 909 Magnolia Bldg., Commerce and Akard Sts., E. G. KOENEMAN, General Agent |
| Denver, Colo. | 601 Seventeenth St., L. W. CARTER, Assistant General Passenger Agent |
| Des Moines, Ia. | 407 Equitable Bldg., Sixth and Locust Sts., F. P. STAFFORD, General Agent |
| Detroit, Mich. | 508 Transportation Bldg., 131 Lafayette Blvd., West, A. R. MALCOLM, General Agent |
| Eugene, Ore. | Osburn Hotel, A. W. BAKER, Traveling Freight and Passenger Agent |
| Fort Collins, Colo. | Union Pacific Station, L. B. WHITEHEAD, Passenger and Ticket Agent |
| Fresno, Calif. | 207-8 Rowell Bldg., Tulare St. and Van Ness Ave., T. F. BROSAHAN, General Agent |
| Glendale, Calif. | 129 South Brand Blvd., C. A. REDMOND, General Agent |
| Hollywood, Calif. | City Ticket Office, Christie Hotel, 6732 Hollywood Blvd., H. W. HICKS, General Agent, Passenger Department |
| Kansas City, Mo. | 805 Walnut St., SETH C. RHODES, General Agent, Passenger Department |
| Leavenworth, Kan. | Union Station, Main and Delaware Sts., A. E. MARTENY, General Agent |
| Lincoln, Idaho | 224 Breier Bldg., H. J. BERGER, Traveling Freight and Passenger Agent |
| Lincoln, Neb. | City Ticket Office, 1308 N. Street, A. D. GRANT, General Agent |
| Long Beach, Calif. | 120 West Ocean Blvd., R. W. SMOCK, General Agent |
| Los Angeles, Calif. | City Ticket Office, 732 South Broadway, J. CRUICKSHANK, Gen'l Agent, Pass'r Dept. A. T. JACKSON, District Passenger Agent |
| Milwaukee, Wis. | 703 Straus Bldg., 230 Wisconsin Ave., K. T. MINDEMANN, General Agent |
| Minneapolis, Minn. | 618 Metropolitan Life Bldg., 125 S. Third St., E. H. HAWLEY, General Agent |
| New Orleans, La. | 1001 New Orleans Bank Bldg., 226 Carondelet St., R. A. PETERS, General Agent |
| New York, N. Y. | City Passenger Office, 205 Farmers' Loan & Trust Co. Bldg., 475 5th Ave., J. B. DeFRIEST, General Agent H. A. LAWRENCE, District Passenger Agent |
| Oakland, Calif. | 2001 Transportation Bldg., 225 Broadway, J. B. DeFRIEST, General Agent |
| Ogden, Utah | 215 Central Bank Bldg., Broadway and 14th St., JAMES WARRACK, General Agent |
| Omaha, Neb. | 214 David Eccles Bldg., 390 Twenty-fourth St., C. L. MCKNIGHT, General Agent |
| Pasadena, Calif. | City Ticket Office, 1523 Farnam St., L. BEINDORFF, Gen'l Agent, Pass'r Dept. |
| Philadelphia, Pa. | Maryland Hotel, 395 E. Colorado St., C. F. FARMER, General Agent |
| Pittsburgh, Pa. | 508 Commercial Trust Bldg., 15th and Market Sts., H. L. LAUBY, General Agent |
| Pomona, Calif. | 216 Oliver Bldg., Smithfield St. and Sixth Ave., JOHN D. CARTER, General Agent EDWARD EMERY, District Passenger Agent |
| Portland, Ore. | Union Pacific System Passenger Station, K. L. HANDY, Passenger and Freight Traffic Agt. |
| Redlands, Calif. | City Ticket Office, 341 Washington St., E. A. KLIPPEL, Jr., Gen'l Agent, Pass'r Dept. |
| Reno, Nev. | 14 Cajon St., L. C. FOWLER, Passenger and Freight Traffic Agent |
| Riverside, Calif. | 200 Nevada State Life Bldg., Second and Center Sts., E. E. LARKIN, General Agent |
| Sacramento, Calif. | Glenwood Mission Inn, 680 Main St., J. V. CARROLL, General Agent |
| St. Joseph, Mo. | 221 California Fruit Bldg., 1006 Fourth St., C. T. SLAUSON, General Agent |
| St. Louis, Mo. | 302 First State Bank Bldg., Frederick Ave. and Felix St., S. E. STOHR, General Freight and Passenger Agent, St. J. and G. I. Ry. |
| Salt Lake City, Utah | 203 Carleton Bldg., 308 North 6th St., J. L. CARNEY, General Agent |
| San Diego, Calif. | City Ticket Office, Hotel Utah, Main and S. Temple Sts., E. A. SHEWE, Dist. Pass'r Agt. |
| San Francisco, Calif. | 345 Plaza St., C. C. JEWETT, General Agent |
| San Pedro, Calif. | City Ticket Office, 673 Market St., H. A. BUCK, District Passenger Agent |
| Santa Ana, Calif. | 101 W. Seventh St., W. F. NASH, Jr., General Agent |
| Santa Monica, Calif. | 305 N. Main St., R. E. DRUMBY, General Agent |
| Sawtelle, Calif. | 602 Santa Monica Blvd., S. C. FROST, General Agent |
| Seattle, Wash. | 1613 Sawtelle Blvd., JOHN D. POST, Ticket Agent |
| Spokane, Wash. | 201 Union Station, 4th Ave. & Jackson St., W. H. OLIN, Ass't Gen'l Frt. and Pass'r Agent |
| Tacoma, Wash. | City Ticket Office, 1207 Fourth Ave., A. L. IVES, General Agent, Passenger Department |
| Toronto (2), Ontario | 727 Sprague Ave., T. J. DOWD, District Freight and Passenger Agent |
| Tulsa, Okla. | 114 S. Ninth St., T. I. McGRATH, District Freight and Passenger Agent |
| Walla Walla, Wash. | 201 Canadian Pacific Bldg., 69 Yonge St., GEO. W. VAUX, General Agent |
| Whittier, Calif. | 320 Kennedy Bldg., 319 S. Boston St., F. F. ROBINSON, General Agent |
| Yakima, Wash. | Baker Bldg., Main and Second Sts., W. J. LEONARD, District Freight and Pass'r Agent |
| | Union Pacific System Passenger Station, G. B. KENNARD, City Freight and Pass'r Agent |
| | Union Pacific Bldg., 104 W. Yakima Ave., H. M. WEST, Dist. Freight and Pass'r Agent |

DEPARTMENT OF TOURS

(C. & N. W. Ry.—Union Pacific System)

J. L. BURGAR, Manager

148 S. Clark St., Chicago, Ill.

C. J. COLLINS

Gen'l Pass'r Agent

OMAHA, NEB.

D. S. SPENCER

Gen'l Pass'r Agent

SALT LAKE CITY, UTAH

W. K. CUNDIFF

Gen'l Pass'r Agent

PORTLAND, ORE.

GEO. R. BIERMAN

Gen'l Pass'r Agent

LOS ANGELES, CALIF.

JOHN L. AMOS

Asst. Traffic Mgr.

Deseret News Bldg.

10 South Main St.

SALT LAKE CITY, UTAH

A. S. EDMONDS

Asst. Traffic Mgr.

Pittock Block

PORTLAND, ORE.

R. B. ROBERTSON

Asst. Traffic Mgr.

Pacific Electric Bldg.

681 Market St.

LOS ANGELES, CALIF.

A. V. KIPP

Asst. Traffic Mgr.

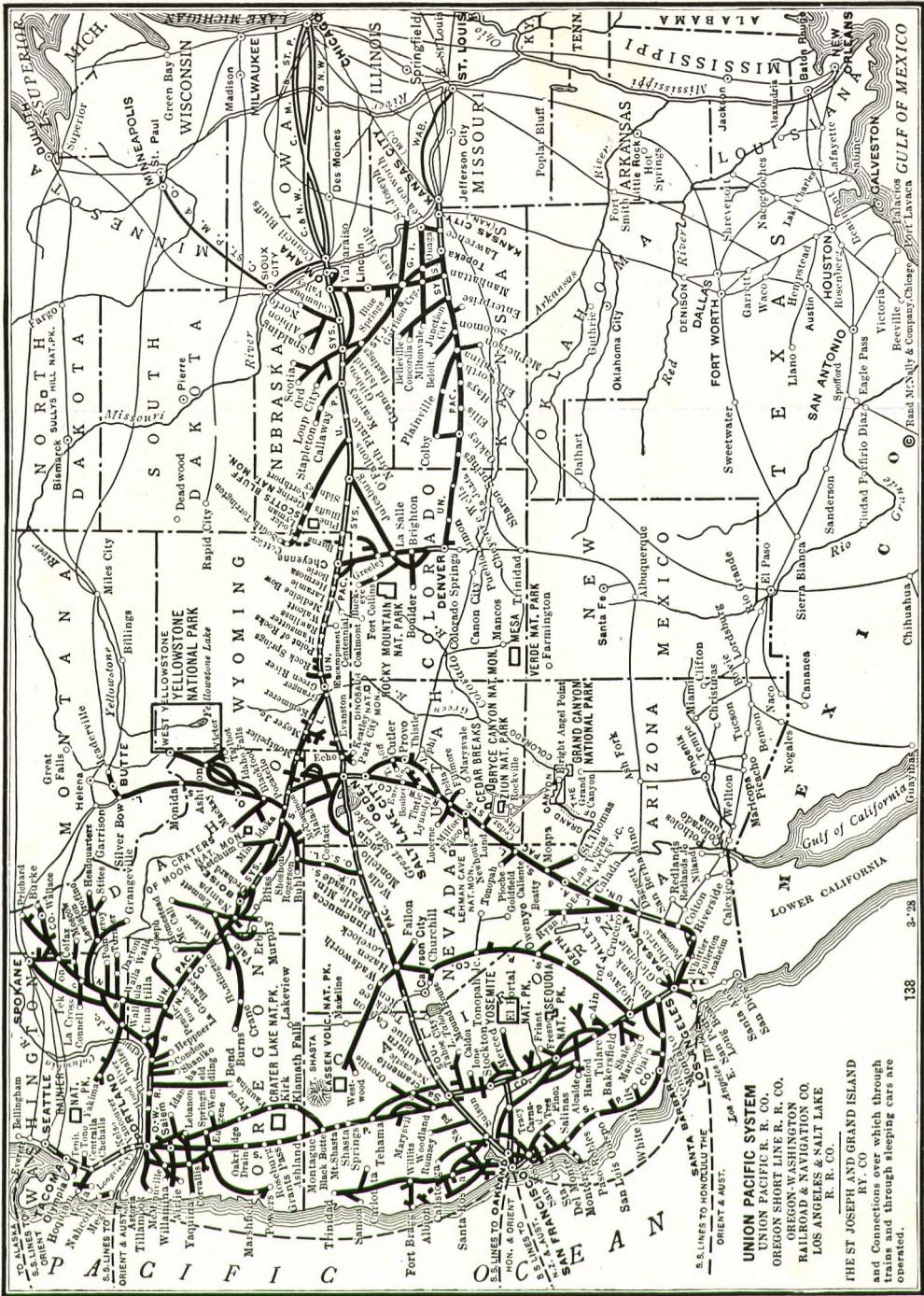
415 Monadnock Bldg.

681 Market St.

SAN FRANCISCO, CALIF.

W. S. BASINGER

Passenger Traffic Manager, OMAHA, NEB.



UNION PACIFIC SYSTEM
 UNION PACIFIC R. R. CO.
 OREGON SHORT LINE R. R. CO.
 OREGON-WASHINGTON CO.
 RAILROAD & NAVIGATION CO.
 LOS ANGELES & SALT LAKE
 R. R. CO.

THE ST. JOSEPH AND GRAND ISLAND
 RY. CO.
 and Connections over which through
 trains and through sleeping cars are
 operated.

