

SUMMER TOURS



SEASON 1924

PARKS ARE TRULY NATIONAL

WHO will gainsay that the parks contain the highest potentialities of national pride, national contentment, and national health? A visit inspires love of country; begets contentment; engenders pride of possession; contains the antidote for national restlessness. It teaches love of nature, of the trees and flowers, the rippling brooks, the crystal lakes, the snow-clad mountain peaks, the wild life encountered everywhere amid native surroundings. He is a better citizen with a keener appreciation of the privilege of living here who has toured the National Parks.

Stephen J. Mather
Director National Park Service
Department of the Interior

THE NATIONAL PARKS OPENING AND CLOSING DATES

Rocky Mountain National Park (Colorado)
Opens June 15th—Closes October 1st
Yellowstone National Park (Wyoming)
Opens June 20th—Closes September 15th
Mount Rainier National Park (Washington)
Opens June 15th—Closes September 15th
Crater Lake National Park (Oregon)
Opens July 1st—Closes September 30th
Hawaii National Park (Hawaiian Islands)
Open all the year
Yosemite National Park (California)
Open all the year
Sequoia National Park (California)
Opens June 1st—Closes September 15th
General Grant National Park (California)
Opens June 1st—Closes September 15th
Zion National Park (Utah)
Opens May 15th—Closes October 15th
Glacier National Park (Montana)
Opens June 15th—Closes September 15th
Mesa Verde National Park (Colorado)
Opens May 15th—Closes November 1st
Hot Springs National Park (Arkansas)
Open all the year
Grand Canyon National Park (Arizona)
Open all the year
Wind Cave National Park (South Dakota)
Opens June 1st—Closes September 30th



**See America First
and the National Parks First of All.**





"Two National Parks in Two Weeks"

Season 1924

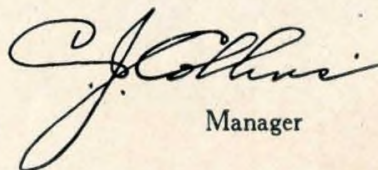
FOR twenty-four years, the Chicago, Union Pacific & North Western Line has successfully directed the vacation travel of tens of thousands of the American people. This bureau is managed by men who give *all* of their time to the solution of tourist problems. Our big purchasing power buys the best of everything. Hotels, resorts and transportation companies leave nothing undone to supply our escorted tours with the degree of high-class service demanded by this organization.

Our two-weeks Escorted Tours for 1924 provide a recreational trip with relief from all travel responsibilities and are herewith presented at cost prices. Our escorted tour tickets include all railroad transportation and, at actual cost, 500 miles by automobile, first-class sleeping car accommodations, meals, hotels—everything arranged in advance and escort furnished without additional charge.

This season we offer "Two National Parks in Two Weeks," featuring the wonderful Yellowstone and the splendid Rocky Mountain (Estes) National Parks. Five days in the former and three days in the latter, with side excursions into Utah and out from Denver, make up, with the train travel, the best two weeks' vacation trip in America.

Another important point: We have chosen the fast and direct rail routes in order to avoid the tedium of any unnecessary train travel. Widely traveled people know that the *best* mountain scenery is not adjacent to transcontinental railways but lies in the great reservations and mountain ranges which can be reached only by highway and trail. Our tours are not only to the mountains but *into* the mountains. In Yellowstone, Utah and Colorado, our passengers travel 500 miles in new high-power automobiles. These luxurious motor trips carry our passengers into the very heart of the finest scenery on this continent.

To the experience of this bureau, the care with which the tours are planned and carried out, and the persuasive prices, add the prestige of the Chicago & North Western Ry., and Union Pacific System, both criterions of excellence, that sponsor these tours—the result is the ideal vacation tour.


Manager

DEPARTMENT OF TOURS

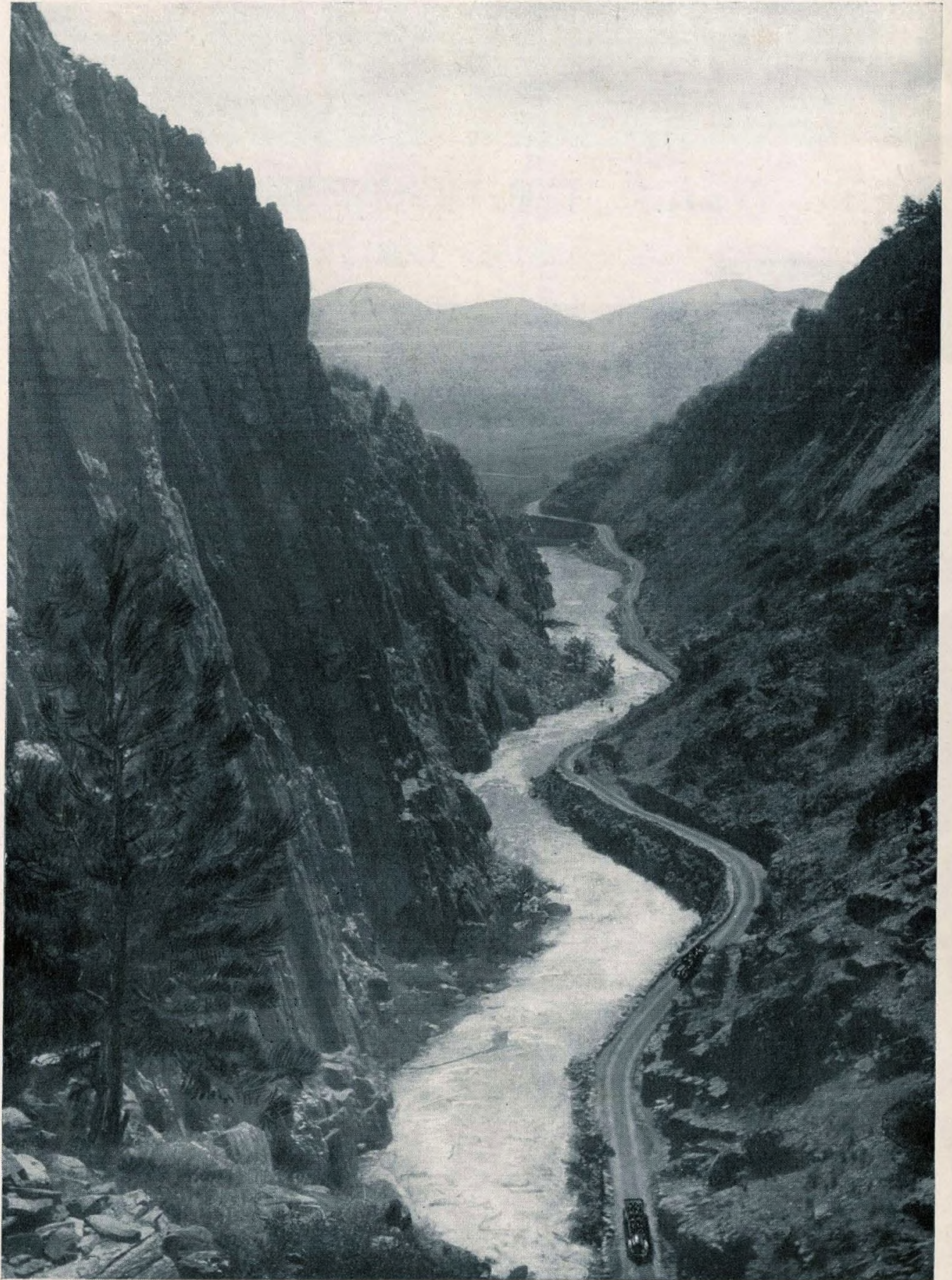
CHICAGO UNION PACIFIC & NORTH WESTERN LINE

UNION PACIFIC SYSTEM

CHICAGO & NORTH WESTERN LINE

148 SO. CLARK ST., CHICAGO, TELEPHONE DEARBORN 2323

"North Western-Union Pacific Tours"



Big Thompson Canyon, front door to Rocky Mountain National Park
and the finest canyon drive in the West

"Two National Parks in Two Weeks"

The Story of the Trip

This is the story of a vacation trip *de luxe* to Yellowstone National Park, Rocky Mountain (Estes) National Park, Utah and Colorado. Note particularly the large map in the center of the book. At a glance it reveals the scope of the train travel and the automobile tours in Yellowstone and Colorado.

Our Escorted Tours leave Chicago on Monday, Thursday and Saturday night during the Park season, commencing on Thursday, June 19, and ending on Saturday, September 6. (Three tours per week during June, July and August.) Persons living outside of Chicago join our tours in Chicago on the day of departure, or at the most convenient westward point en route. The regular National Park Tours require two weeks. Passengers may take all or part of these complete, economical and absolutely first-class trips. The tours as scheduled are the best possible vacation trips, but if for any reason you cannot return according to our routes, we will sell you the tour for the going trip only; and you can leave the party at Yellowstone, Salt Lake City or any other point, returning how or when you please. Each individual booking receives the personal attention of the management of the Tours. Our staff of travel specialists is at your disposal to assist you in making the most of every day of your western tour. For details of schedules, rates, etc., see pages 10 and 11.

"WESTWARD, HO!" (First day en route)

As might be expected, these finest of tours start westward from the finest of railroad stations, the Chicago Terminal of the Chicago & North Western Ry. (See illustration.) This is the North Western's magnificent memorial to the life and spirit of the West. From Chicago to Omaha our train glides over the famous, smooth, double-tracks of this premier carrier, protected by automatic electric block safety signals.

West of Omaha we use Union Pacific System, sponsored by the statesmanship of Lincoln, re-created by the genius of Harriman, and dedicated by both to the "uniting of east and west with a boulevard of steel." The Lincoln Highway follows this route.

From Illinois to Wyoming our route is over prairie and plain; from Wyoming westward we are in the mountains. You will spend happy hours on the rear platform of the observation car following, in fancy, that historic highway, the old Overland Trail, first trod by buffalo and worn into a path by Indian moccasins, then followed by fur traders and trappers, grim Mormons and sturdy forty-niners. There will be no dust nor grime. The roadbed is disintegrated granite taken from Sherman Hill, each tiny particle as clean as a pebble.

A word about the dining car meals. During the two weeks' trip, our guests will eat ten meals in our dining cars. "An abundance of good food, well cooked and served with a smile" is a motto of the Chicago, Union Pacific & North Western Line.

TROUT DINNER IN OGDEN CANYON

On the second day, in western Wyoming, our train enters the mighty canyons of the Echo and the Weber. These winding mountain corridors bring us to Ogden, Utah, where our party stops for the remainder of the afternoon and evening. This city is famed far and wide for Ogden Canyon, a cleft in the Wasatch Mountains, 2,000 feet deep, through which tumbles a torrential mountain stream. Our party rides up this canyon to "The Hermitage" (see illustration) for a "trout and chicken dinner." There is no haste. We have time not only for dinner but to lounge on the big rustic veranda, drinking deep of the mountain air and watching the evening shadows darken the canyon walls overhead. Our train leaves Ogden for West Yellowstone at 9.05 p.m.

IN GEYSERLAND (Third day en route)

We arrive at the West Yellowstone Gateway before breakfast. The cool crisp air exhilarates. Something tells you that you are on the threshold of a tremendous scenic adventure. After breakfast, in the Union Pacific System dining room, our party takes automobiles which have been reserved in advance, and we set forth on a five days' auto tour that will realize all our dreams.

"North Western-Union Pacific Tours"



Chicago Terminal of the Chicago & North Western Ry.
All our tours leave from this magnificent station

This informal story will not attempt to portray the glories of the Yellowstone. It is assumed that you have heard about it and read about it and seen pictures of it all your life. If this be true, you are concerned now about practical matters which have to do with *how* you see it.

The large comfortable automobile has superseded the stage coach. To be sure this takes away something of the frontier picturesqueness, but the automobile makes the trip more comfortable, safer, opens up new places of interest, and allows double time at Old Faithful and the Grand Canyon.

PALATIAL YELLOWSTONE HOTELS OR DELIGHTFUL PERMANENT CAMPS

You have heard of that poem in rusticity, Old Faithful Inn! Our tourists spend a night and eat four meals there. Less famous, but more spacious and luxurious, is the new Canyon Hotel, an inspired adaptation of European hotel ideas to Yellowstone environment. The "lounge" of this hotel is large enough for a thousand couples to dance at one time. We use all the first-class Yellowstone Park hotels on these trips.

We also give escorted service with the Yellowstone Camps Company for passengers who prefer the popular camping trip. The permanent camps are located near the hotels. They are clean, comfortable, and sanitary; and the service emphasizes all the wholesome pleasures of "camping out."

FIRST DAY IN YELLOWSTONE (Third day en route)

The morning ride is from West Yellowstone Station to Old Faithful, a distance of thirty miles. You make a wise choice in entering the Park at this Western Entrance because

"Two National Parks in Two Weeks"



Union Pacific System—Double-track, protected by automatic electric safety signals
On the official route of our tours

the government road from this point, winding through the Park, brings us to the principal attractions in their proper sequence. Old Faithful Inn is in the heart of the Upper Geyser Basin where all the great geysers are located. You can sit on the broad gallery of the Inn and watch Old Faithful play only 200 yards away! During the afternoon our party is taken over the Basin. By nightfall you will agree that this is the "most weird spot in the Universe."

SECOND DAY IN YELLOWSTONE (Fourth day en route)

The morning is spent at Old Faithful. Short walks from the hotel discover multi-colored pools and more geysers. After lunch a 35-mile motor trip takes the party to Lake Hotel, a restful structure overlooking Yellowstone Lake. The late afternoon affords time for fishing, boating, mountain climbing or "just resting." After dinner, see the bears, big and little, cinnamon and "silver tip," come out of the forest for their twilight meal.

THIRD DAY IN YELLOWSTONE (Fifth day en route)

We leave the hotel at 10.00 a.m., drive sixteen miles to the Grand Canyon, visit Artist Point and arrive at the Canyon Hotel at noon. The Grand Canyon is the most brilliantly colored spectacle in nature. Great cataracts tumble into its depths. One of these falls drops a greater distance than twice the height of Niagara.

FOURTH DAY IN YELLOWSTONE (Sixth day en route)

The fourth morning is also spent at the Canyon. You will wish you could stay a month. If you are robust, you can climb down into the Canyon and discover new sensations in its sublime depths. At 1.15 p.m. our party boards its motor cars and goes north-

"North Western-Union Pacific Tours"



Weber Canyon, Utah. In center and at left are double tracks of the Union Pacific System
At right is the Lincoln Highway

ward through Dunraven Pass, visiting Tower Falls and the strangely different Second Canyon of the Yellowstone. This part of the Park, opened up by the advent of the auto, gives Yellowstone a new highway, the Chittenden Road, which is superior, scenically and from an engineering standpoint, to any other road in the Yellowstone region. "Bowknot" curves, lofty passes, broad vistas, towering overhanging cliffs, pinnacles, waterfalls, wild game and wild flowers make up a partial list of the attractions on this new route, ending at Mammoth Hot Springs Hotel.

FIFTH DAY IN YELLOWSTONE (Seventh day en route)

Our party spends the entire morning in an inspection of the terraces of the Mammoth Hot Springs. Since the destruction of the pink and white terrace of New Zealand these springs stand without a counterpart in the world. After visiting this region, Jupiter Terrace, Hymen Terrace, and Devil's Kitchen will be woven in the fabric of lasting memories. At 1.30 p.m. we leave Mammoth for the last afternoon in the Park, driving south and west forty-seven miles to West Yellowstone Station. We stop en route at Norris Geyser Basin. The late afternoon ride down Madison River Canyon ends our visit to Nature's Great Museum where she exhibits, as nowhere else, cascades, cataracts, hot spring terraces, geysers, multi-colored mud pots, petrifications, colored canyons, and wild animals.

FROM YELLOWSTONE TO SALT LAKE CITY

At Pocatello, Ogden, or Salt Lake City, passengers may leave the organized tour for destinations on the Pacific Coast, or any other points not on our designated schedule. If you are interested in an extended trip of this kind, it is easy for us to arrange.

"Two National Parks in Two Weeks"



Hermitage Hotel in Ogden Canyon. Our train stops seven hours for a side-trip up this famous canyon

SALT LAKE CITY (Eighth day en route)

We spend all day in Salt Lake City, the capital not only of Utah, but of the Inter-Mountain Empire. No city in America is more widely famed and few cities measure up so nearly to the traveler's preconceptions. We make our headquarters and take our meals at the magnificent Hotel Utah—a \$2,500,000 hotel.

The day's entertainment at Salt Lake City is guaranteed to take up every minute with interesting experiences and observations. The Mormon Temple! The Great Salt Sea! Verily, these are names to conjure with. We take a leisurely sight-seeing tour of the city. This ride includes not only all the historically famous Mormon places, but the broad boulevards, parks, and civic centers. After luncheon our party is taken out to Saltair, the beach resort on the shores of Great Salt Lake. This resort is fifteen miles distant from Salt Lake City, and the trip is made by train. Unless you have bathed in the Dead Sea of Palestine, you will not be prepared for the buoyancy and exhilaration of these waters. We leave Salt Lake City at 5.15 p.m. for Colorado, dining on the train.

FIRST DAY, ROCKY MOUNTAIN NATIONAL PARK REGION

(Ninth day en route)

We arrive at Greeley, Colo., via Union Pacific System at 10.38 a.m. the ninth day. After luncheon at the Camfield Hotel we board the large, comfortable motor cars of the Rocky Mountain Parks Transportation Company for the most popular of our national parks, where we spend the next three days. Our afternoon route is up the Big Thompson Canyon, an auto highway ride which for magnificent heights and sheer depths is not equaled elsewhere in the Rocky Mountains. Turn at once to the frontispiece of this book and witness the camera's verification of this statement. At 5.30 p.m. our motor cars are due at the Estes Park Chalets, nestling in the foothills. Rocky Mountain National Park!

"North Western-Union Pacific Tours"



A section of Salt Lake City showing the Mormon Temple, Hotel Utah and the Wasatch Mountains in background

In nobility, in calm dignity, in glory of stalwart beauty, there is no mountain group to excel the company of snow-capped veterans of all the ages which stands at everlasting parade behind its grim, helmeted captain, Long's Peak. There is probably no other scenic neighborhood of the first order which combines mountain outlines so bold with a quality of beauty so intimate and refined. Just to live in the valleys in the eloquent and ever-changing presence of these carved and tinted peaks is itself satisfaction.

SECOND DAY, ROCKY MOUNTAIN NATIONAL PARK REGION

(Tenth day en route)

It is always desirable to rise early in Rocky Mountain National Park. From the Chalets an ideal view of a glorious Rocky Mountain sunrise may be obtained, in itself well worth a visit to this region. The day may be spent as one chooses. Some may wish to explore the mountains on foot, others to go farther on horseback or via automobile, while many prefer to enjoy the mountain scenery from the verandas.

The trail follows the valley floor, flanked by a charming mingling of aspens and evergreens; at times it climbs the walls of mighty canyons affording vistas of distant river valleys and more distant snow-crowned peaks; at times it follows the top of a divide and Long's Peak dominates the picture.

This is a region to delight the nature-lover. He can walk and climb and fish to his heart's content. Hallet's Glacier and Long's Peak challenge him to climb to the ice and the clouds. Not a few accept these challenges and find not only success but mental and physical vigor.

"Two National Parks in Two Weeks"



One of the powerful and easy riding automobiles operated in the National Parks
Our tours use these safe, comfortable, luxurious cars

THIRD DAY, ROCKY MOUNTAIN NATIONAL PARK REGION (Eleventh day en route)

No motor ride of the entire two weeks' vacation tour will give the spice and flavor of our ride of this morning from the Chalets to Grand Lake, via Estes Park Village, thence by the Fall River Road, stopping at beautiful Chasm Falls. The completion of the Fall River Road has opened to the motor traveler the widely beautiful and hitherto inaccessible western slope of the Continental Divide. Our large and powerful automobiles wind their way ever upward, through Horseshoe Park, until they cross the Divide at Milner Pass, altitude 10,759 feet. They proceed southward on the western slope of the Snowy Range, and shortly before noon reach Grand Lake, the largest and one of the most beautiful lakes in the Colorado Rockies. Overlooking its placid blue waters, a mile and a half above the level of the sea, is Grand Lake Lodge, a rustic cabin resort, where we spend the afternoon and night.

FOURTH DAY, ROCKY MOUNTAIN NATIONAL PARK REGION (Twelfth day en route)

From Grand Lake, the route follows the North Fork of Grand River, passes Granby, and ascends the Valley of the Fraser River to its source. The Continental Divide is again crossed at Berthoud Pass, whence new and wonderful panoramas of the Rockies are unfolded. Our cars continue down spectacular Clear Creek canyon to Idaho Springs (where stop is made for lunch), then climb upward for a spin through Denver's Mountain Parks. A short ride over smooth highways brings us to Denver, the capital of Colorado.

DENVER

At Denver we headquarter and take dinner at The Albany, one of the city's finest hotels. No tour of the West is complete without Denver. It is the eastern portal to the mountain country. The city is famous for its public buildings, parks and progressive commercial life.

The afternoon and evening are left open for shopping and "go as you please" about the city. The autos will call at the Albany Hotel at 10.00 p.m. and transfer us to the Union Station, from which our Pullmans leave Denver at 11.30 p.m. for Chicago and the East.

SCHEDULES

Yellowstone-Rocky Mountain Escorted Tours

LEAVE CHICAGO AS FOLLOWS:

Tour	Tour	Tour	Tour
Y-1 Thu., June 19	Y-9 Mon., July 7	Y-17 Sat., July 26	Y-25 Thu., Aug. 14
Y-2 Sat., June 21	Y-10 Thu., July 10	Y-18 Mon., July 28	Y-26 Sat., Aug. 16
Y-3 Mon., June 23	Y-11 Sat., July 12	Y-19 Thu., July 31	Y-27 Mon., Aug. 18
Y-4 Thu., June 26	Y-12 Mon., July 14	Y-20 Sat., Aug. 2	Y-28 Thu., Aug. 21
Y-5 Sat., June 28	Y-13 Thu., July 17	Y-21 Mon., Aug. 4	Y-29 Sat., Aug. 23
Y-6 Mon., June 30	Y-14 Sat., July 19	Y-22 Thu., Aug. 7	Y-30 Sat., Aug. 30
Y-7 Thu., July 3	Y-15 Mon., July 21	Y-23 Sat., Aug. 9	Y-31 Sat., Sept. 6
Y-8 Sat., July 5	Y-16 Thu., July 24	Y-24 Mon., Aug. 11	

DETAILED SCHEDULE

Lv Chicago.....	8.00 p.m.	Sat., Mon. or Thu.	C. & N. W. Ry.
Ar Omaha..... 1st day	9.20 a.m.	Sun., Tue. " Fri.	"
Lv Omaha..... 1st day	9.40 a.m.	Sun., Tue. " Fri.	U. P. System
Ar Ogden..... 2d day	1.30 p.m.	Mon., Wed. " Sat.	"

IN OGDEN SEVEN HOURS—SIDE-TRIP TO OGDEN CANYON

Lv Ogden..... 2d day	9.05 p.m.	Mon., Wed. or Sat.	U. P. System
Ar West Yellowstone..... 3d day	7.30 a.m.	Tue., Thu. " Sun.	"

FIVE-DAY AUTOMOBILE TOUR OF YELLOWSTONE NATIONAL PARK

Lv West Yellowstone..... 3d day	9.30 a.m.	Tue., Thu. or Sun.	Automobile
Stopping en route at Mammoth Paint Pots and Great Fountain Geyser.			
Ar Old Faithful..... 3d day	11.55 noon	Tue., Thu. or Sun.	" 29 miles
Lv Old Faithful..... 4th day	2.00 p.m.	Wed., Fri. " Mon.	"
Stopping en route at Thumb Paint Pots and Fishing Cone			
Ar Lake..... 4th day	5.00 p.m.	Wed., Fri. or Mon.	" 35 "
Lv Lake..... 5th day	10.00 a.m.	Thu., Sat. " Tue.	"
Stopping en route at Mud Geyser and Artist Point			
Ar Grand Canyon..... 5th day	12.00 noon	Thu., Sat. or Tue.	" 20 "
Lv Grand Canyon..... 6th day	1.15 p.m.	Fri., Sun. " Wed.	"
Stopping en route at Dunraven Pass and Tower Falls			
Ar Mammoth Hot Springs 6th day	5.00 p.m.	Fri., Sun. or Wed.	" 40 "
Lv Mammoth Hot Springs 7th day	1.30 p.m.	Sat., Mon. " Thu.	"
Stopping en route at Norris Geyser Basin			
Ar West Yellowstone..... 7th day	5.04 p.m.	Sat., Mon. or Thu.	" 47 "
			Total 171 miles
Lv West Yellowstone..... 7th day	7.00 p.m.	Sat., Mon. " Thu.	U. P. System
Ar Ogden..... 8th day	6.10 a.m.	Sun., Tue. " Fri.	"
Lv Ogden..... 8th day	6.20 a.m.	Sun., Tue. " Fri.	"
Ar Salt Lake City..... 8th day	7.30 a.m.	Sun., Tue. " Fri.	"

IN SALT LAKE CITY ONE DAY—SIGHT-SEEING TOUR BY AUTOMOBILE SIDE-TRIP TO SALTAIR BEACH

Lv Salt Lake City..... 8th day	5.15 p.m.	Sun., Tue. or Fri.	U. P. System
Ar Greeley..... 9th day	10.38 a.m.	Mon., Wed. " Sat.	"

THREE-DAY AUTOMOBILE TOUR ROCKY MOUNTAIN NATIONAL PARK REGION

Lv Greeley..... 9th day	1.30 p.m.	Mon., Wed. or Sat.	Automobile
En route to Estes Park via the Big Thompson Canyon			
Ar Estes Park Chalets..... 9th day	5.30 p.m.	Mon., Wed. or Sat.	" 55 miles
The 10th day may be spent as one chooses—in exploring the mountains on foot, by horseback or automobile.			
Lv Estes Park Chalets..... 11th day	8.00 a.m.	Tue., Thu. or Sun.	"
Via Fall River Road, Horseshoe Park and Milner Pass			
Ar Grand Lake Lodge..... 11th day	12.30 p.m.	Wed., Fri. or Mon.	" 42 "
Lv Grand Lake Lodge..... 12th day	8.30 a.m.	Thu., Sat. " Tue.	"
Ar Denver..... 12th day	4.30 p.m.	Thu., Sat. " Tue.	" 110 "
			Total 207 miles

IN DENVER AFTERNOON AND EVENING

Lv Denver..... 12th day	11.30 p.m.	Thu., Sat. or Tue.	U. P. System
Ar Omaha..... 13th day	5.30 p.m.	Fri., Sun. " Wed.	"
Lv Omaha..... 13th day	6.00 p.m.	Fri., Sun. " Wed.	C. & N. W. Ry.
Ar Chicago..... 14th day	7.25 a.m.	Sat., Mon. " Thu.	"

Cost of Complete 14 Day Tours

From Chicago, returning to Chicago

	Using Yellowstone Park Hotels	Using Yellowstone Park Camps
Total—Cost Rate, per person:		
One person occupying double lower berth	\$216.79	\$207.79
One person occupying double upper berth	\$209.25	\$200.25
Two persons occupying one double lower berth (each)	\$197.97	\$188.97
Two persons occupying one section (each)	\$213.02	\$204.02

Compartment and drawing-room rates on application.

The above rates cover all round-trip railroad transportation, standard sleeping car accommodations as indicated for complete trip, *all meals everywhere*, automobile tour of and hotel or camp accommodations in Yellowstone National Park; automobile tour of and accommodations at the Lodges in Rocky Mountain National Park; accommodations at hotels and sightseeing trips in Ogden, Salt Lake City, Greeley and Denver; transfer of passengers and hand baggage to and from city hotels; in fact, every actual expense, furnishing "*The Best of Everything*."

Cost of Incomplete Tours

From and to points named

	Using Yellowstone Park Hotels	Using Yellowstone Park Camps
All tour privileges from Chicago to departure from Yellowstone Park (any entrance), with railroad ticket only for return to Chicago	\$135.38	\$126.38
All tour privileges from Chicago to arrival Ogden 8th day, with railroad ticket only for return to Chicago	\$139.13	\$130.13
All tour privileges from Chicago to departure Salt Lake City, with railroad ticket only for return to Chicago	\$144.08	\$135.08
All tour privileges from Chicago to arrival Greeley, with railroad ticket only for return to Chicago	\$153.96	\$144.96
All tour privileges from Chicago to departure Denver, with railroad ticket only for return to Chicago	\$202.41	\$193.41
All tour privileges from Omaha, returning to Omaha	\$196.16	\$187.16

COLORADO SPRINGS EXTENSION

ARRANGEMENTS FOR THIS EXTENSION MUST BE MADE AT
TIME OF BOOKING

Lv Denver 12th day	7.30 p.m. Thu., Sat. or Tue.	C. & S. Ry.
Ar Colorado Springs 12th day	10.05 p.m. Thu., Sat. " Tue.	"

Headquarters Antlers Hotel. Trip to Crystal Park morning 13th day (Fri., Sun. or Wed.) via automobile, leaving Antlers Hotel at 9.00 a.m. and returning at 11.45 a.m. for lunch. In the afternoon trip to the summit of Pikes Peak via the famous Cog Road, leaving Antlers Hotel at 1.00 p.m. and returning at 6.00 p.m.

Morning of the 14th day (Sat., Mon. or Thu.) Circle Drive, including Garden of the Gods, Cave of the Winds, South Cheyenne Canyon and Seven Falls, leaving at 8.00 a.m. and returning to Antlers Hotel for lunch.

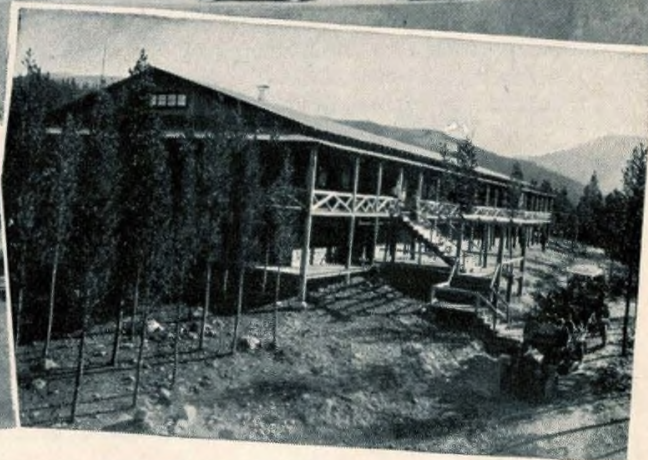
Lv Colorado Springs 14th day	1.45 p.m. Sat., Mon. or Thu.	D. & R. G. W. R. R.
Ar Denver 14th day	4.20 p.m. Sat., Mon. " Thu.	"

Transfer to the Albany Hotel where dinner will be served at 6.00 p.m.

Total cost rate for two-day extension, Denver to Colorado Springs and return, including Pikes Peak, Circle Drive (visiting Garden of the Gods, Cave of the Winds, South Cheyenne Canyon and Seven Falls) and Crystal Park, hotel accommodations, all meals, transfers, etc. \$27.25

Rates from other cities and rates for other incomplete tours for passengers traveling to the Pacific Northwest, California, etc., on application.

"North Western-Union Pacific Tours"



Old Faithful Inn, Yellowstone Park

Lake Hotel, Yellowstone Park

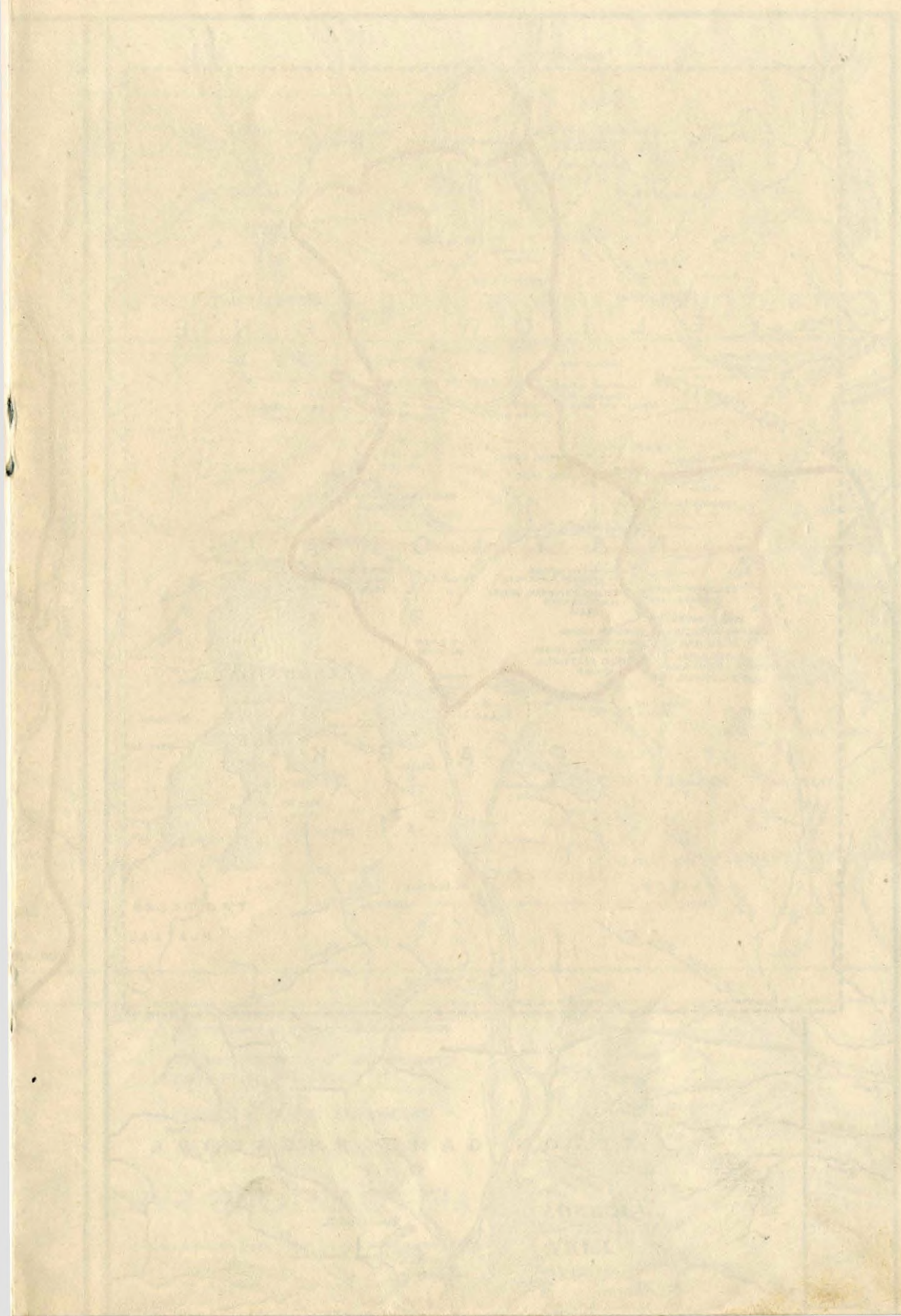
Canyon Hotel, Yellowstone Park

A Permanent Camp, Yellowstone Park

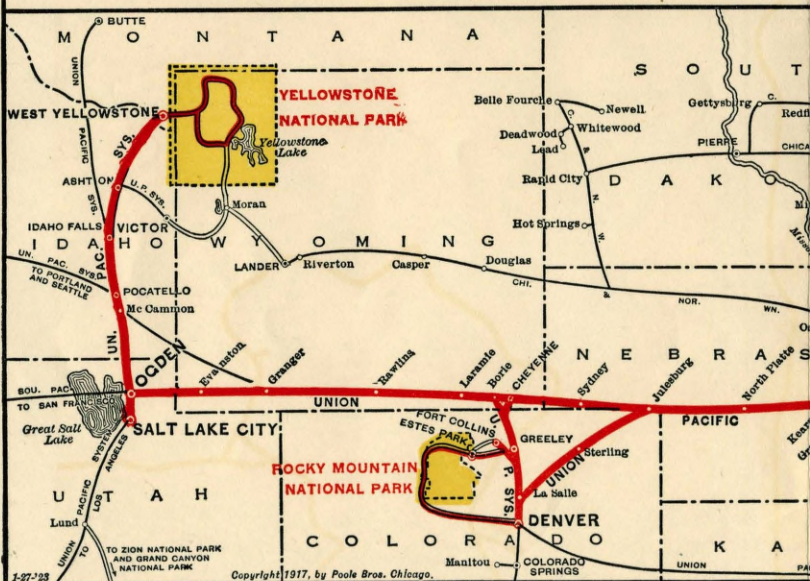
Estes Park Chalet, Rocky Mountain Park

Grand Lake Lodge, Rocky Mountain Park

Roots of our

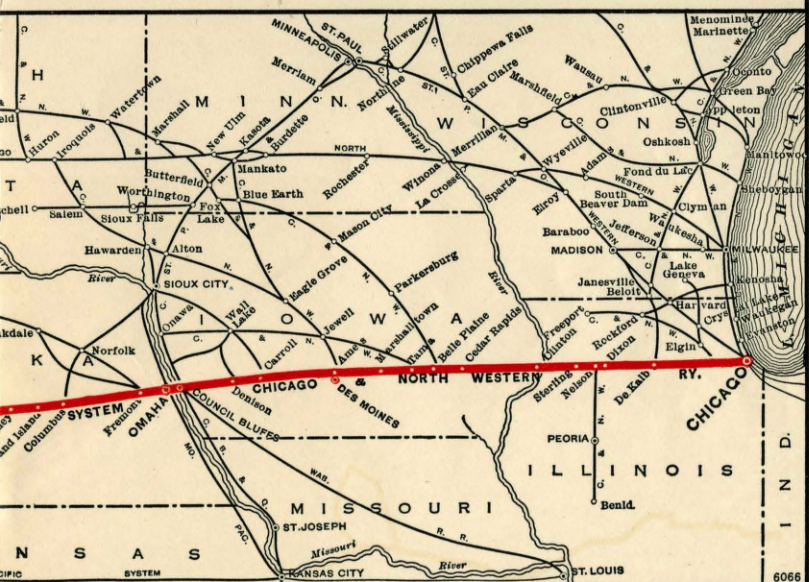


Routes of our



Chicago, Union Pacific & North Western Line to Yellow

Escorted Tours



Twstone Park and Rocky Mountain(Estes) National Park

"Two National Parks in Two Weeks"



Minerva Terrace—one of the many terraces of Mammoth Hot Springs



Take your camera to Yellowstone and bring home pictures like this
of the bears and other wild animals

"North Western-Union Pacific Tours"



Yellowstone Falls. This picture and the next show that our parties see "the best of the West"

WHY YOU SHOULD JOIN OUR TOURS

Our At-Actual-Cost Tour Service offers you the great advantage of knowing at the outset the exact total cost of your trip. You are relieved of the anxieties and troubles of the independent traveler; all the details connected with your trip are arranged in advance and are carefully carried out by our representative with the party. You are, in fact, more independent in a real sense than the so-called independent traveler, as you are entirely free to enjoy to the fullest extent the pleasures of your trip.

PERSONAL ESCORT

Our Tours are always under the charge of a courteous and experienced representative of the Department of Tours, who accompanies the party during the entire trip and who devotes his attention to the comfort and welfare of our passengers, relieving the individual of the usual travel cares.

FOR WOMEN TRAVELING WITHOUT ESCORT

If a woman be deterred from travel because she must travel alone, our Escorted Tours offer an opportunity to bridge this difficulty and enjoy the trip of a lifetime. Our travel representative will introduce her to the other members of our special train party, look after her tickets, transfers, etc., and insure her against vexation and annoyance. Hundreds of women, as individuals, have joined our Tours. The arrangement offers an opportunity for a business man to send his wife, mother, sister or daughter on a safe, two weeks' vacation amid congenial surroundings.

HOW TO JOIN OUR TOURS

Persons desiring to join one of our Tours should send their names to be registered as early as possible, stating Pullman space required. Reservations will then be made and held

"Two National Parks in Two Weeks"



The Fall River Drive, Rocky Mountain National Park, one of the new motor roads traveled by our tours

until remittance reaches our office, when Tour tickets will be issued. **Remittance should be made not later than seven days before departure of Tour**, but when this is inconvenient, we will, upon request, hold reservations longer. Persons prevented from going, may secure refund in full, provided reservations be cancelled before 1.00 p.m. on date of Tour departure.

Be sure when purchasing railroad transportation that it reads in both directions via Chicago & North Western Railway between Chicago and Omaha, and via Union Pacific System between Omaha and West Yellowstone, Mont.; also that coupons for Yellowstone Park Transportation Company and hotels or camp accommodations in Yellowstone National Park are included.

Address all communications to C. J. Collins, Manager, 148 South Clark St., Chicago, Ill., or telephone Dearborn 2323.

SERVICE BY CORRESPONDENCE

With an intelligent understanding of the problems confronting the average person who wishes to secure the greatest benefits of a western vacation trip, the Department of Tours is prepared to give satisfactory service to persons making inquiry by mail. Please feel free to write fully and do not hesitate to ask any question in connection with your journey. Our service makes travel easy, enjoyable and provides for the utmost in sight-seeing and recreation within the scope of your trip.

OUR REPRESENTATIVE WILL CALL ON YOU

A representative of the Department of Tours will call on you, if you so desire, for the purpose of giving you all the information you require regarding our Tours. He is courteous, well informed, and a thorough "travel expert."

"North Western-Union Pacific Tours"



One of our Escorted Tour Parties at Sheep Lake on the Fall River Road in Rocky Mountain National Park, Colorado

PURCHASE RAILROAD TICKETS AT YOUR HOME STATION

Persons residing elsewhere than Chicago may join our Tours at Chicago or any regular stopping point en route. While all Tours start from Chicago and tickets may be purchased at our office there, passengers starting from other points should purchase railroad tickets from agent at their home station, including the regular tour through Yellowstone National Park via Yellowstone Park Transportation Co., and Hotel or Camp accommodations. Through tickets usually effect a saving in railroad fare; moreover, they include free transfer at Chicago if reading through that city, and enable passengers to check baggage through to West Yellowstone, Mont., thus avoiding expense and trouble at Chicago.

Complete advice concerning all ticketing arrangements will be given at time reservations are requested—in person or by mail.

INFORMATION FOR TICKET AGENTS

In ticketing passengers who wish to join our Tours, sell Summer Excursion tickets to West Yellowstone, Mont., routed in both directions via Chicago & North Western Ry. between Chicago and Omaha, and via Union Pacific System between Omaha and West Yellowstone.

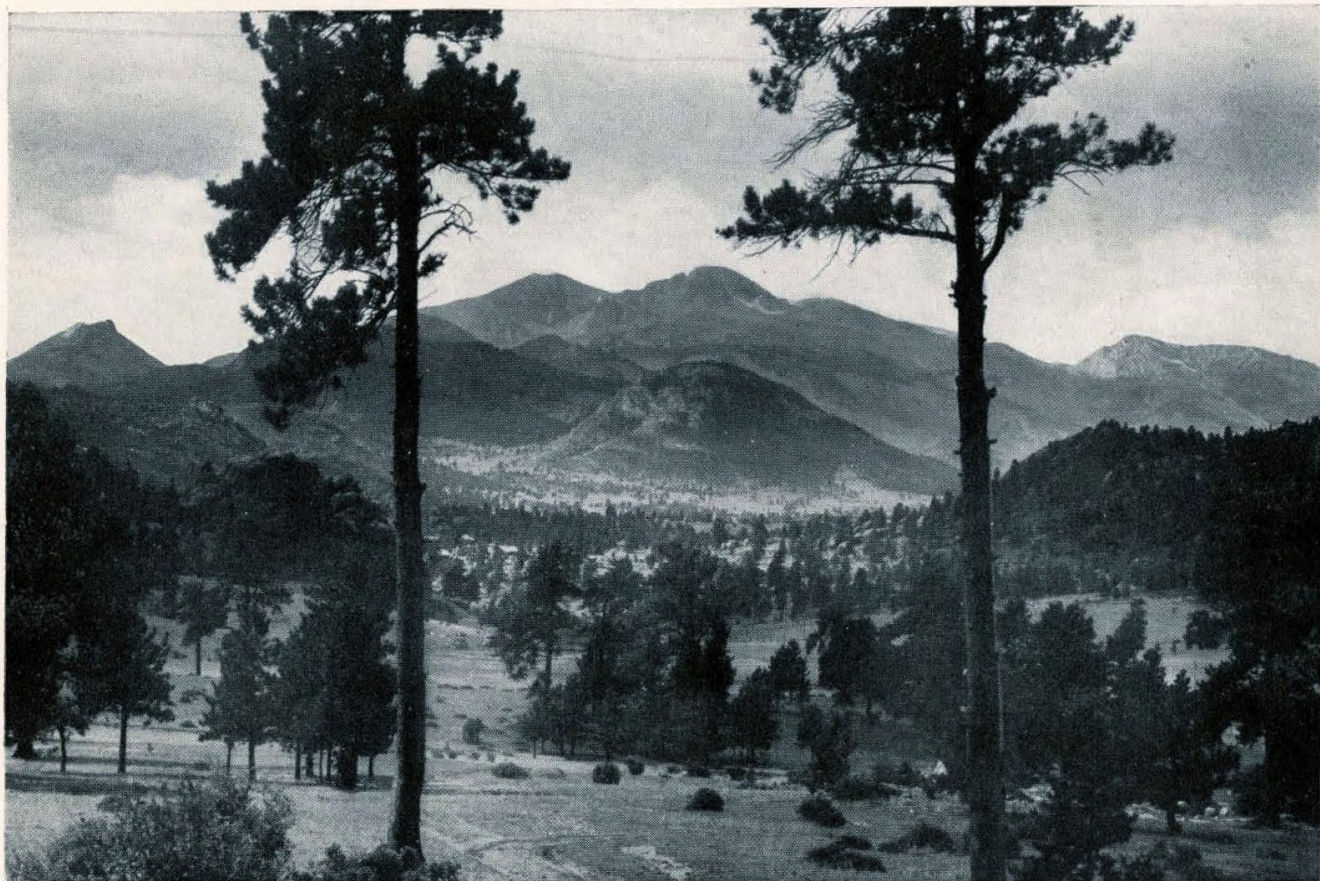
Coupons should be attached for one of the complete five-day tours in Yellowstone National Park, as follows:

For the Hotel and Automobile Tour, including automobile transportation and hotel accommodations: Rate \$54.00 higher than the fare to West Yellowstone, Mont. (proportion accruing to the Yellowstone Park Transportation Company \$25.00; to the Yellowstone Park Hotel Company \$29.00).

For the Camping and Automobile Tour, including automobile transportation and camping accommodations: Rate \$45.00 higher than the fare to West Yellowstone, Mont. (proportion accruing to the Yellowstone Park Transportation Company \$25.00; to the Yellowstone Park Camping Company \$20.00).

Remittance for other tour privileges, including sleeping car accommodations beginning and ending at Chicago, should be made by passengers direct to C. J. Collins, 148 S. Clark Street, Chicago, Ill.

"Two National Parks in Two Weeks"



Long's Peak—Altitude 14,256 feet
Rocky Mountain National Park

INCOMPLETE TOURS—DIFFERENT RETURN ROUTES

Passengers who wish to leave our Tours at points en route may do so by announcing such intention at time of booking and charges will be adjusted accordingly. On page 11 will be found rates covering certain incomplete tours. Passengers wishing to extend their journeys to the Pacific Coast and to enjoy the advantages of our Escorted Tours through the National Parks are invited to apply for further information.

STOP-OVER PRIVILEGES

Railroad tickets are good to reach original starting point not later than October 31, 1924. Stop-overs may be had at all points en route. By making such arrangements at time of booking, passengers may leave a Tour at any stopping point en route and join any subsequent Tour for the completion of itinerary, or they may travel independently from stop-over point.

VARIETIES OF SLEEPING CAR ACCOMMODATIONS

The rates from Chicago for the Complete Escorted Tours "Y-1" to "Y-31" inclusive, shown on page 11, cover the different assignments of lower, upper berths, and sections, in first-class, standard Pullman cars.

Drawing-rooms and compartments may be had at greater cost. These rooms are always in demand and should be reserved as far in advance as possible. Information as to cost upon application.

BAGGAGE ARRANGEMENTS

Unnecessary baggage is always a nuisance. Most persons agree that a roomy suitcase will hold everything essential for a comfortable trip through the National Parks. The free baggage allowance on the automobiles in the National Parks is 25 pounds (one regular suitcase); on the railroads 150 pounds of baggage is carried free. Passengers who may have a trunk or other baggage to be checked should have their baggage checked at their home station to West Yellowstone, Mont., via Chicago & North Western Ry. and Union

"North Western-Union Pacific Tours"



Members of our Escorted Tours are served en route in dining cars

Pacific System. Trunks will be stored without cost at West Yellowstone while passengers are making the Park trip, and at Denver, while passengers are in Rocky Mountain National Park.

The Department of Tours assumes no responsibility for baggage, but in the event of damage, delay or loss, we will do all in our reasonable power to lessen the hardship incurred.

Our escort will furnish you with special baggage tags, bearing your name and address, upon departure from Chicago. These tags should be attached to all baggage.

OUR DINING CAR SERVICE

In our spacious dining cars, the delicacies and substantial of the season are served in an efficient and skillful manner. All dining cars are equipped with electric lights and electric fans. A ventilating device in the kitchen removes all odors of cooking.

MAIL AND TELEGRAMS

Mail and telegrams addressed to members of the Tours "Y-1" to "Y-31" inclusive, should be forwarded as shown below, being particular to specify "Member of North Western-Union Pacific Tour No. Y—."

West Yellowstone, Mont., care Ticket Agent, Union Pacific System.

Salt Lake City, Utah, care Hotel Utah.

Denver, Colo., care Albany Hotel.

WEARING APPAREL

Because of the altitudes in the National Parks, cool weather is experienced, especially after sundown. You should take along fall weight clothing and a medium weight overcoat or sweater. A linen duster and a pair of colored glasses will prove invaluable while motor-ing; heavy, thick soled shoes are a convenience.

NOTE

Rates and train schedules quoted herein are subject to such change as tariff or operating requirements, which cannot be foreseen at time of issuance of this publication, may later demand.

Extensions and Side Trips



A section of Denver's business district—Rocky Mountain Range in distance

EXTENSION TOUR

COLORADO SPRINGS, MANITOU AND PIKE'S PEAK REGION

For those desiring to include the Pike's Peak region in connection with the Yellowstone-Rocky Mountain National Park trip, we have arranged an extension tour from Denver. (For detailed itinerary and rate, see page 11.)

Passengers may leave the regular tour at Denver, after visiting Rocky Mountain National Park, and take advantage of our all-expense escorted tour service to Colorado Springs. This extension includes the principal attractions of the Pike's Peak region.

We make our headquarters at the magnificent Antlers Hotel. The first day's itinerary includes a trip to Crystal Park, a beautiful mountain highway drive following the natural contours of the mountain sides to an altitude of 9,125 feet. From the summit you have spread before you an all-inclusive view of the Pike's Peak region. Return is made to the Antlers Hotel for luncheon. In the afternoon we will ascend to the summit of Pike's Peak via the famous Cog Railway. This is the loftiest peak in this region—its head often thrust high above the clouds. To those who have realized the sensation of looking from a mountain top over thousands of miles of the earth's surface it affords an indelible recollection. We return to the Antlers in time for dinner.

On the morning of the fourteenth day we will be taken on an automobile sight-seeing trip which will include the Garden of the Gods, a region of fantastic formations of red limestone, Williams Canyon, Cave of the Winds, remarkable for the crystalline formations of its sixteen chambers, and South Cheyenne Canyon, in which are located the Seven Falls. At 1.45 p.m. we leave Colorado Springs, arriving at Denver, Union Station, 4.20 p.m. Transfer will be made to the Albany Hotel, where dinner will be served at 6.00 p.m.

By making this extension tour in connection with the tours which leave Chicago on Thursdays or Saturdays, you may connect with one of our personally escorted tours at Denver for the return trip from Denver to Chicago. If Colorado Springs is made in connection with a Monday tour, you will have to return independently from Denver to Chicago. *Arrangements for this extension tour MUST be made at time of booking or before leaving Chicago, as all unsold reservations are cancelled on date tour departs from there and our all-expense rates cannot be secured after that time.*

"North Western-Union Pacific Tours"



In Sunny California

CALIFORNIA ALL-EXPENSE TOURS, UNDER ESCORT

Leave Chicago June 21, July 12 and August 2, 1924

To know intimately the charm of the great out-doors, one must visit California. It has that which appeals to the spirit of enthusiasm in every American. That glamour of romance which has attracted Americans to the old countries is abundant in California. No artist can paint, no writer can describe the surprises that await the visitor to the Golden State. California calls you—heed the call.

Our tours of California offer the exceptional opportunity of seeing the most of the great West in the shortest possible time and at the least expense. Our schedules are so arranged that the regions offering the most scenic attractions are traversed in the daytime. Like our Yellowstone-Rocky Mountain National Park tours, our At-Actual-Cost trips include all expenses—everything arranged in advance and escort furnished without additional expense.

These finest of tours will leave from the modern Chicago & North Western Railway Terminal, Chicago, at 8.00 p.m., Saturday, June 21, July 12 and August 2, 1924, on the Los Angeles Limited, a strictly first-class train, consisting of the latest Pullman equipment. After touring California—from the most southern part, San Diego, to the Golden Gate, San Francisco—we will return to Chicago on the famous Overland Limited.

These tours will be of twenty-seven days' duration and will include all of the principal points of interest in California, such as Riverside, Pasadena, Los Angeles, San Diego, Santa Catalina Island, Santa Barbara, Del Monte, San Francisco, Lake Tahoe, and the Yosemite National Park. Salt Lake City, Utah, will also be included.

LOS ANGELES, the "City of Angels," is the gateway to the countless resorts in Southern California, being the hub from which radiate numerous steam and electric lines. It is a place of artistic residences, with palms and luxuriant trees and beautiful flowers. There are twenty-three parks among its attractions, but these figures signify little in a city which is itself a park.

California Escorted Tours



A glimpse of Yosemite Valley Main entrance to Yosemite National Park

SAN DIEGO, "the birthplace" of California, is particularly rich in interest. The old mission—first erected on the west coast; hundred-year-old palms; the padres' irrigation dam; Presidio hill, and such romantic reminders as Romona's Marriage Place, are but examples of what has caused San Diego to be called the "Mecca for tourists."

SANTA BARBARA, best preserved of the missions, is the only one held always by the brown-robed Franciscan brethren. Mission Santa Barbara is a shrine sought each year by a multitude of visitors. In and about the city, as at Montecito and Miramar, are the winter homes of many wealthy eastern people.

DEL MONTE. Hotel Del Monte is the center of an estate of some 18,000 acres covering the great Monterey peninsula. Through this vast private park miles of magnificent motor boulevards have been built, enabling the visitor to drive for over forty miles. In the vicinity of Del Monte are Monterey, Carmel Bay and Mission, and many other points of scenic and historic interest.

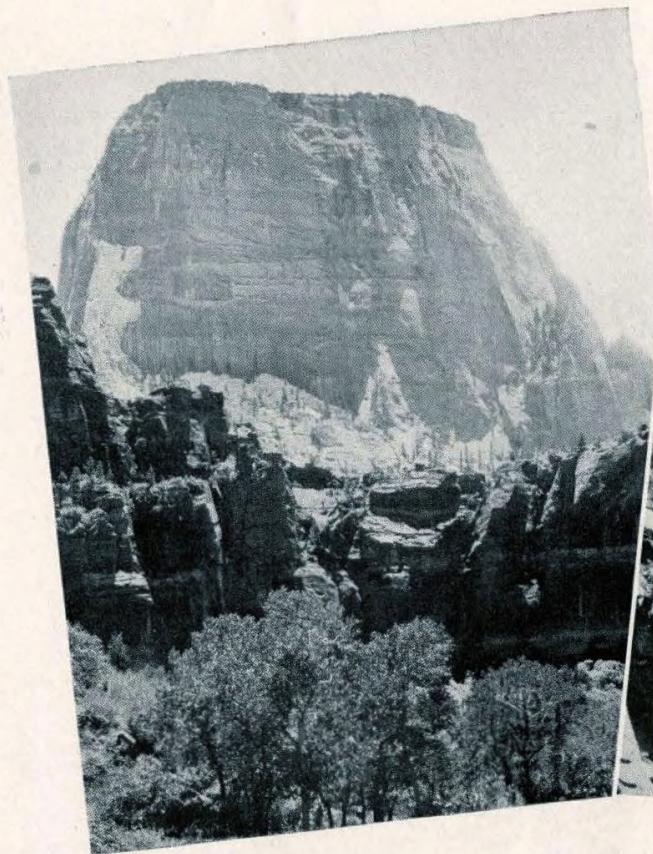
SAN FRANCISCO is a "city beautiful" as well as one of commanding commercial importance, and is the gateway to the Orient and the Far East. From the bay San Francisco rises on a hundred hills, as if its sky line had been planned by some great artist. San Francisco is a world city with a history as crowded as an empire's—a great metropolis of more than half a million.

YOSEMITE NATIONAL PARK holds within its boundaries the wonderful Yosemite Valley, with its chain of high and rugged mountains, and numerous waterfalls, Yosemite Falls being the highest in the world; the Mariposa Grove of Big Trees, the most noted of California's seven groves of gigantic sequoias; Glacier Point, affording a wonderful view of the valley from above; Hetch-Hetchy, and many other attractions, too numerous to mention.

LAKE TAHOE is one of the largest and most beautiful mountain lakes in the world. It is noted for its crystal clearness and its wonderful coloring—a zone of brilliant emerald encircling a heart of deepest indigo blue. Its altitude is 6,280 feet. Its depth has never been sounded.

NOTE: Owing to the lack of space, detailed schedules and all-expense rates are necessarily omitted from this publication. Ask for booklet "TOURS OF CALIFORNIA," which contains complete information regarding these ideal and money-saving tours.

Extensions and Side Trips



The Great White Throne



A glorious vista of Zion Canyon

Zion National Park

ZION NATIONAL PARK AND GRAND CANYON

"With the creation of the Zion National Park on November 19, 1919, there entered into our national park system a reservation as remarkable, as brilliantly beautiful, and as highly differentiated from all others as any of the distinguished group. It contains 120 square miles of the painted terrace country of Southern Utah, surrounding from its source a shallow river whose carved and fretted and monumented canyon lies between sandstone walls which rise 2,000 feet in gorgeous mottled reds surmounted by 1,000 feet in marble-white. This canyon, winding like a snake, abounding in enormous peaks and domes, and glowing like a Roman sash, is one of the most striking spectacles which even America has to offer."—From report of Robert Sterling Yard, Executive Secretary, The National Parks Association.

Zion National Park is reached from Salt Lake City and Los Angeles by the Union Pacific System to Cedar City, Utah, thence by motor stage an even hundred scenic miles. Toward the end of the journey the route enters "Dixie," a horticultural paradise, and then ascends the Valley of the Virgin, brilliant with most of the reds and yellows of the palette. During the Park season, May 15 to October 15, there is motor stage service between Cedar City and the Park, where Zion Camp provides accommodations for visitors. The north rim of the Grand Canyon of the Colorado, in Arizona, may be reached by auto side-trip from Zion National Park, a distance of 175 miles. For three or more passengers, automobile will leave Cedar City for a seven-day tour, including Zion National Park, Grand Canyon (North Rim), Kaibab Forest, Bryce Canyon and Cedar Breaks. at per capita rate of \$110.00, which includes all expense for auto, meals and lodging.

The cost of the three-day tour from Cedar City, which includes Zion National Park and Cedar Breaks, is \$45.00 for all expense of auto, meals and lodging.

For complete information on Zion National Park, Grand Canyon (North Rim), Cedar Breaks and Bryce Canyon address the Department of Tours, 148 S. Clark Street, Chicago, Ill.

Extensions and Side Trips



Multnomah Falls
Columbia River Gorge



Mount Rainier and Paradise Inn
Mount Rainier National Park

THE PACIFIC NORTHWEST is a region of beautiful mountains, charming waterfalls, broad rivers, and fruitful valleys. How vast it is, how magnificent its scenery, how incomparable its resources, how wide the horizon of its future is beyond the untraveled conception of not a few Americans.

PORTLAND AND THE COLUMBIA RIVER GORGE. Portland and its surroundings offer to the visitor an infinite variety of attractions, ranging from snow-covered mountains in their primitive ruggedness to the calm of garden-like valleys. Of Portland's many distinctive characteristics, it takes special pride in its roses and the splendid natural scenery to be found within a short distance of the heart of the city. The Columbia River Highway, between Hood River and Portland, shares with Union Pacific System the honors of the world's greatest scenic thoroughfare. This smooth pathway through the Cascade Mountains is 200 miles long.

MOUNT RAINIER NATIONAL PARK. Mount Rainier has a glacier system far exceeding in size and impressive beauty that of any other in the United States. From its snow-covered summit twenty-eight rivers of ice pour slowly down its sides to the rich gardens of wild flowers and splendid forests below. No glacier of large size in the world is so quickly, easily, and comfortably reached as the most striking and celebrated Nisqually Glacier. Thousands of Americans in normal times go to Switzerland to see glaciers much harder to reach and far less satisfactory to study.

THE PUGET SOUND COUNTRY of waters and forests and mountains is a region where, the summer through, every day is a "day in June." Recreation spots of great beauty abound. The leading cities, Seattle and Tacoma, rank in commercial importance and civic pride with the big cities of the nation and possess that peculiar type of frontier vigor which keeps them fully abreast of the great march of progress.

ALASKA. Summer excursion steamers run from Seattle, Puget Sound terminus of Union Pacific System, through the land-locked "inside" passage to the wonderland of the far North. Alaska, land of the midnight sun and the northern lights, has in its scenic grandeur an asset which to the traveler is far more appealing than its gold mines, fur, and fisheries, and what will surprise many is its beautiful summer weather and bright sunshine, the wild flowers, and almost tropical verdure.

Individual itineraries for extension tours to the Pacific Northwest and Alaska will be prepared upon application, without charge.

TOURS AND TICKETS EVERYWHERE

The functions of our Department are manifold. We prepare and furnish, without charge, schedules and routings for societies, clubs, fraternities and organizations who desire special-car or special-train trips to any part of the West.

We will gladly supply information and literature on Colorado, Utah, California, the Pacific Northwest, Alaska, Hawaii and all the National Parks.

If you are planning to travel independently, or to organize a party, please call on any of our listed representatives to assist you. A letter addressed to C. J. Collins, Manager, 148 South Clark Street, Chicago, Ill., will receive immediate and careful attention. Telephone Dearborn 2323.



ESCORTED TOURS "TWO NATIONAL PARKS IN TWO WEEKS"

ARE CONDUCTED BY THE

DEPARTMENT OF TOURS

MAINTAINED BY

CHICAGO & NORTH WESTERN RY.
UNION PACIFIC SYSTEM

No other western railroad employs a staff of travel experts who spend their entire time in arranging attractive vacation tours that provide—

"The Best of Everything"

ADDRESS ALL COMMUNICATIONS TO

C. J. COLLINS, Manager
148 S. Clark Street, Chicago, Ill. (Telephone Dearborn 2323)

DEPARTMENT OF TOUR REPRESENTATIVES

CHICAGO, ILL. - - - 148 S. Clark St. - - Tel. Dearborn 2323	{ C. E. Burgess, Chicago Representative H. B. Northcott, Traveling Agent Jos. Muller, Passenger Agent H. P. Dickson, Passenger Agent
LOS ANGELES, CAL. - 417 Central Bldg. - Tel. 12968 - -	C. B. Johnson, California Representative
CINCINNATI, OHIO - 202 Dixie Term'l Bldg. Tel. Main 3999 -	C. M. Rollings, Traveling Agent
CLEVELAND, OHIO - 939 Union Trust Bldg. Tel. Main 3354	V. J. Schmittroth, Traveling Agent
DETROIT, MICH. - - 621 Free Press Bldg. Tel. Main 7260 -	C. E. Frain, Traveling Agent
INDIANAPOLIS, IND. - 308 Merchants Bk. Bldg. Tel. Main 5016 -	C. A. Stoddard, Traveling Agent
PITTSBURGH, PA. - - 202 Oliver Bldg. - - Tel. Smithfield 632 -	V. J. Schmittroth, Traveling Agent

TICKET AND INFORMATION OFFICES

CHICAGO & NORTH WESTERN RY.

BOSTON, MASS.—416 Old South Bldg., 294 Washington St.
J. H. Schultz, General Agent.
C. W. Gray, Traveling Agent.
M. G. Gundersen, Traveling Agent.
T. A. Daly, City Agent.

BUFFALO, N. Y.—202 Ellicott Square Bldg., 295 Main St.
R. H. Miller, General Agent.
J. P. Fox, Traveling Agent.
W. W. Pontious, Traveling Agent.
J. W. Harris, City Agent.

CHICAGO, ILL.—148 S. Clark Street.
H. G. Van Winkle, General Agent Passenger Dept.
E. D. Parmelee, City Agent.
N. M. Kean, City Agent.
E. E. Bogardus, City Agent.
226 W. Jackson Street.
J. P. Williams, Division Freight & Passenger Agent.
P. D. Stokes, Traveling Agent.
Madison Street Terminal, Canal and Madison Sts.
N. A. Hersether, Passenger & Ticket Agent.

CINCINNATI, OHIO—202 Dixie Terminal Bldg., 49 E. 4th St.
J. L. Burgar, General Agent.
A. M. Linz, Traveling Agent.
F. A. Haas, Traveling Agent.
A. G. Tetlow, Traveling Agent.
C. P. Humphreys, City Agent.

CLEVELAND, OHIO—939 Union Trust Bldg., 925 Euclid Ave.
H. E. Saumby, General Agent.
A. C. Lewis, Traveling Agent.
S. L. Howells, Traveling Agent.
C. H. Newton, City Agent.

DES MOINES, IA.—216 Royal Union Life Bldg., 7th St. & Grand Ave.
W. F. Winkrantz, General Agent.
C. A. Wingett, City Agent.

DETROIT, MICH.—621 Free Press Bldg., 127 LaFayette Ave.
A. E. Ladwig, General Agent.
W. L. Stannard, Traveling Agent.
W. F. Schliet, Traveling Agent.
C. W. Bloom, City Agent.

GREEN BAY, WIS.—H. C. Cheyney, Div. Frt. & Pass'r Agent.

INDIANAPOLIS, IND.—308 Merchants Bank Bldg.
V. A. Hampton, General Agent.
G. H. Dumas, Traveling Agent.
R. L. Dickson, Traveling Agent.

MADISON, WIS.—A. W. Bower, Div. Frt. & Pass'r Agent.
H. B. Loucks, Traveling Agent.
A. L. Fisher, Traveling Agent.

MILWAUKEE, WIS.—99 Wisconsin Street.
E. P. Rueter, General Agent Pass'r Dept.
C. H. Hoffmeister, City Agent.
C. R. Huntington, City Agent.

NEW YORK, N. Y.—403 Stewart Bldg., 280 Broadway.
F. G. Fitz-Patrick, General Agent.
W. E. Scott, Traveling Agent.
S. A. Trussell, Traveling Agent.
W. G. Babel, City Agent.
Wm. Platt, City Agent.

PEORIA, ILL.—213 Jefferson Bldg., 200-08 S. Jefferson St.
F. B. Martin, General Agent.
R. E. Williams, Traveling Agent.

PHILADELPHIA, PA.—214 Pennsylvania Bldg., 15th & Chestnut Sts.
R. O. Small, General Agent.
C. N. Hale, Traveling Agent.
T. J. Coen, Traveling Agent.
R. S. Amis, Traveling Agent.
J. M. Styer, City Agent.

PITTSBURGH, PA.—202 Oliver Bldg., 535 Smithfield St.
J. J. Livingston, General Agent.
E. W. Fiala, Traveling Agent.
R. W. Phelps, Traveling Agent.
A. J. Stockburger, City Agent.

ST. LOUIS, MO.—205 Boatmen's Bank Bldg., 314 N. Broadway
H. L. Hammill, General Agent.
H. A. Hancock, Traveling Agent.
C. S. Evenson, Traveling Agent.
A. B. Sharp, City Agent.

SIOUX CITY, IA.—522 Nebraska St.
M. M. Betzner, General Agent.

TORONTO, ONT.—301 Colonial Building, 9 King St. West.
G. S. Donaldson, General Agent.
W. W. Creighton, Traveling Agent.

C. A. Cairns,
Passenger Traffic Manager
Chicago, Ill.

A. R. Gould,
Asst. Passenger Traffic Manager,
Chicago, Ill.

M. R. Leahy,
Gen'l Passenger Agent,
Chicago, Ill.

UNION PACIFIC SYSTEM

ATLANTA, GA.—1232 Healey Bldg., 49 N. Forsyth Street.
W. C. Elgin, General Agent.
G. J. Garmon, Traveling Frt. and Pass'r Agent.
P. S. Smith, Traveling Freight & Pass'r Agent.

BIRMINGHAM, ALA.—742 Brown-Marx Bldg.
J. H. Doughty, General Agent.
W. B. Markham, Traveling Frt. & Pass'r Agent.

BOSTON, MASS.—207-08 Old South Bldg., 294 Washington St.
Willard Massey, General Agent.
T. C. Wallace, Traveling Frt. & Pass'r Agent.
Geo. M. Shirley, Traveling Frt. & Pass'r Agent.
Jas. Cunningham, City Passenger Agent.
G. A. Oulton, Freight and Passenger Agent.

CHICAGO, ILL.—1421 Garland Bldg., 58 E. Washington St.
G. R. Lemmer, General Agent Passenger Dept.
E. E. Robertson, Traveling Passenger Agent.
W. G. Carmichael, City Passenger Agent.
William Warner, City Passenger Agent.

CINCINNATI, OHIO—704 Union Central Bldg.
W. H. Connor, General Agent.
J. Stanley Orr, District Passenger Agent.
W. A. Looney, City Passenger Agent.
F. B. Swope, Traveling Freight & Passenger Agent.
J. J. Klenke, Traveling Freight & Passenger Agent.
F. G. Busch, Traveling Freight & Passenger Agent.

CLEVELAND, OHIO—941 Union Trust Bldg.
W. H. Benham, General Agent.
J. L. Balmer, Traveling Freight & Passenger Agent.
Edwin A. Allen, Traveling Freight & Passenger Agent.
Richard E. Burt, City Passenger Agent.
W. G. Peterjohn, Traffic Agent.

DES MOINES, IA.—606-07 Polk Bldg., 209 Fifth St.
D. M. Shrenk, General Agent.
V. C. Kuhne, Traveling Passenger Agent.
R. L. Henry, Traveling Freight & Passenger Agent.

DETROIT, MICH.—507 Free Press Bldg., 127 LaFayette Ave.
A. R. Malcolm, General Agent.
J. G. Howey, Traveling Frt. & Pass'r Agent.
J. E. Kennedy, Traveling Frt. & Pass'r Agent.
L. G. Meder, City Passenger Agent.
C. W. Nethercot, Traffic Agent.
C. A. Nilsson, Traffic Agent.

KANSAS CITY, MO.—805 Walnut St.
Seth C. Rhodes, General Agent, Passenger Department.
E. M. Mattes, City Passenger Agent.

MILWAUKEE, WIS.—1215 Majestic Bldg., 221 Grand Ave.
E. G. Clay, General Agent.
G. J. Buckingham, Traveling Pass'r Agent.
Ed. A. Ryan, City Passenger Agent.

NEW ORLEANS, LA.—1001 Carondelet Bldg.
R. A. Peters, General Agent.
R. D. Tate, Traveling Freight & Pass'r Agent.

NEW YORK, N. Y.—309-10 Stewart Bldg., 280 Broadway.
J. B. DeFriest, General Agent.
I. W. Carter, District Passenger Agent.
D. C. Fisk, Jr., Traveling Freight & Pass'r Agent.
D. M. Munro, Traveling Freight & Passenger Agent.
C. G. Jochum, Traveling Freight & Passenger Agent.
H. L. Gardner, City Passenger Agent.
C. J. Smith, City Passenger Agent.
G. I. Giles, Passenger Agent.

OMAHA, NEB.—1416 Dodge St.
A. K. Curtis, City Passenger Agent.
F. E. Watkins, Traveling Passenger Agent.
E. C. Mallon, Traveling Passenger Agent.
H. C. Smiley, Depot Passenger Agent.

PHILADELPHIA, PA.—508 Commercial Trust Bldg.
F. L. Feakins, General Agent.
S. C. Milbourne, Assistant General Agent.
S. A. Tubman, Traveling Freight & Pass'r Agent.
Gordon G. Noble, Traveling Freight & Passenger Agent.
T. M. J. Fritz, City Passenger Agent.

PITTSBURGH, PA.—216 Oliver Bldg.
John D. Carter, General Agent.
Edward Emery, District Passenger Agent.
G. O. Hassenfritz, Traveling Frt. & Pass'r Agent.
Gaylord F. Allen, Traveling Frt. & Pass'r Agent.
Gregg W. Cook, City Passenger Agent.

ST. LOUIS, MO.—2053 Railway Exchange Bldg., 611 Olive St.
J. L. Carney, General Agent.
A. J. Rakers, Traveling Frt. & Pass'r Agent.
J. W. McBurney, Traveling Frt. & Pass'r Agent.
J. M. Rebman, City Passenger Agent.

TORONTO, ONT.—201 Can. Pac. Ry. Bldg., 69 Yonge St.
Geo. W. Vaux, General Agent.

W. S. Basinger,
Passenger Traffic Manager, Omaha, Neb.

W. H. Murray, Gen'l Pass. Agt., Omaha	D. S. Spencer, Gen'l Pass. Agt., Salt Lake City
Wm. McMurray, Gen'l Pass. Agt., Portland	T. C. Peck, Gen'l Pass. Agt., Los Angeles

SUMMER TOURS

