

# Dude Ranches

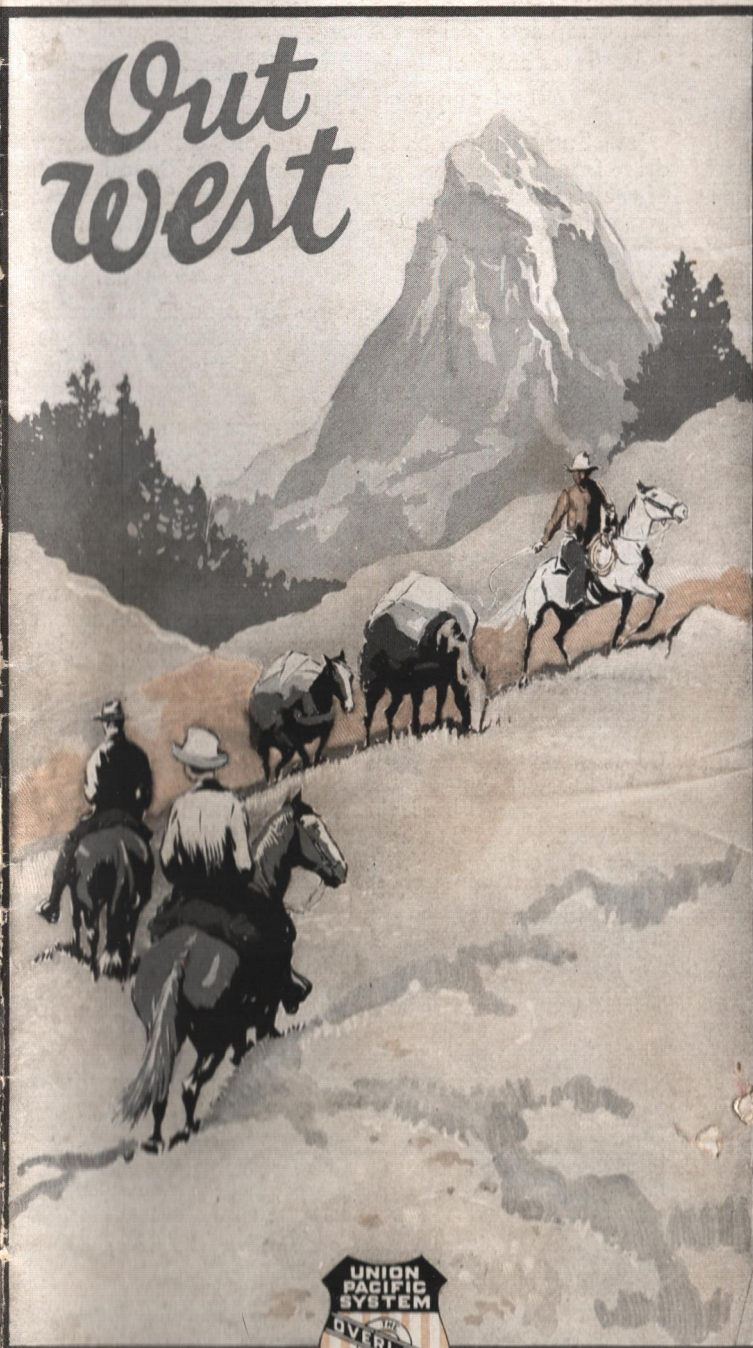
# Dude Ranches

Out  
west

Out  
west

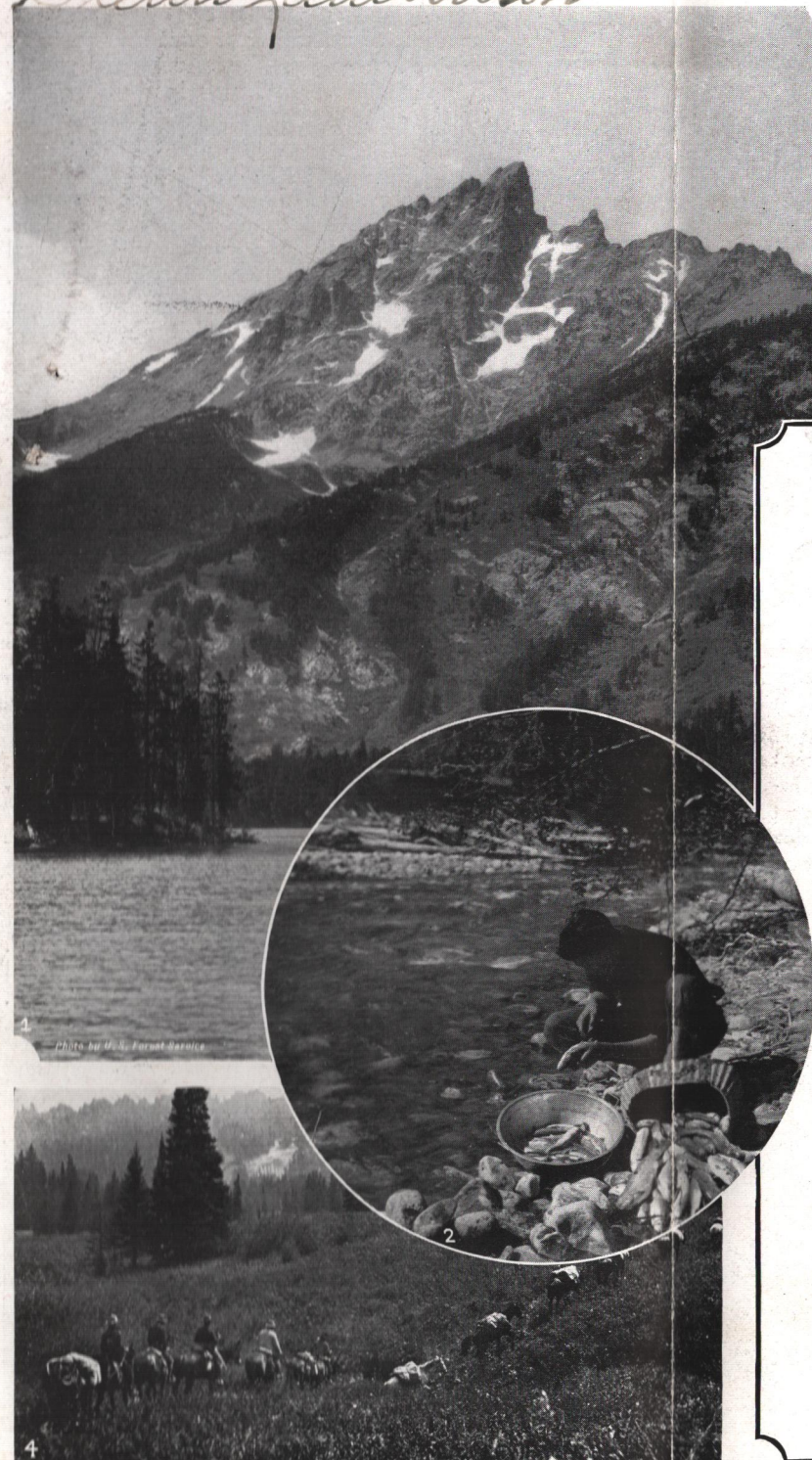


## UNION PACIFIC



## UNION PACIFIC

*Glenn Lambertson*



**T**HIS booklet is a "round up" of information concerning "Dude Ranches" reached via the Union Pacific System.

In the West there have been developed ranches for paying guests, colloquially called "Dude Ranches."

The setting and scenery of each is typical of the Rocky Mountain Country and add their zest to the enjoyment of the wholesome activities that are offered.

The "wranglers" who operate them provide the "dude" with board and lodging, teach him the ways and wisdom of the West and show him its beauties.

Far from beaten paths—out where highways end and the wilds begin—husky, vigorous ranch life is spiced by pack trips to trout haunts and after big game. Folks there drop superficialities, lay aside cares and discover in themselves heartiness and sincerity that make for happiness. Good health is as constant as one's shadow.

Put foot to stirrup, reader, swing into the saddle, and we'll go "out West."

Any Union Pacific representative listed on page 15 will gladly help you plan your Western outing.

1. Teton National Forest 2. Good Fishing Everywhere 3. Old Frontier Days 4. Pack Trip Trail





*Big Game Is Plentiful*

### The Jackson Hole Region

The Jackson Hole country, in Wyoming south of Yellowstone National Park, is known as "the last of the Old West."

It is a strip of semi-wilderness 65 miles long and from 10 to 20 miles wide. In it are the magnificent Teton Mountains and kindred rugged peaks; hundreds of miles of trout streams; a chain of half-hidden lakes teeming with fish and water fowl; densely forested rendezvous of bear, deer, elk and other big game; and a few scattered ranches, typical of pioneer days.

Jackson, with a population of 500 and the conveniences of an up-to-date city, is the largest town, and a base of operations appreciated by visitors. Other towns are Wilson, Kelly, Moran, Elk, Grovont, Zenith, Teton, and Hoback. All are reached via the Union Pacific Lines to Victor or Ashton, Ida., and thence by auto stage; also by Union Pacific to Rock Springs, Wyo., thence by auto stage through Pinedale.



*Mt. Moran from Amoretti Inn*

### AMORETTI INN

Amoretti Inn, located on Moran Heights two miles from Moran, consists of a number of one and two-room log cabins and tent houses and is a convenient base for fishing and hiking excursions and for trips into Yellowstone National Park. All requisites for "roughing it" may be bought at Moran Heights. Guests may hire guides and rent horses as desired.

The Inn accommodates 125 persons. Rooms have private baths of the modern type. Fresh vegetables, fruits, meats and milk are on the menu and individual service is featured. The rate per guest is \$5.00 per day.

It is reached most easily via Union Pacific to Victor, Ida., and thence by auto stage to Moran. Address inquiries to Amoretti Inn, Moran, Wyo.

### BAR B C RANCH

The rustic cabins of the Bar B C Ranch are opposite Grand Teton Peak, 100 yards from the Snake River, 2 miles from the main auto road, 18 miles from Jackson, 17 miles from Wilson, 40 miles from Victor and no distance at all from the true heart of the West. Thirty-two cabin rooms accommodate 50 guests.

The charm of Bar B C lies in its simplicity. All necessary comforts are provided but luxuries are neither expected nor desired. Folks do "rough it in comfort." The food is good and plentiful. Guests are supplied with hot water and portable tubs. There is a ranch swimming pool. Sanitary features are excellent.

Horace Carncross, M. D., and Irvin P. Corse are the "dude wranglers." They conduct fishing parties in summer and big game hunting parties in the fall.

Saddle horse hire is included in the rates, for horseback riding is made a basic sport in this region. The longer horseback trips lead into the Tetons and the Gros Ventre Mountains, famous for fish and game.

Rates are \$300 or \$310 per month or \$77 per week. The management will meet guests at Victor, Ida., and convey them to Bar B C for an average charge of \$10.

Guide service is supplied for parties of four or more at \$18 per day. Boats may be rented.

Correspond with the Bar B C Ranch, Teton P. O., Lincoln County, Wyo.



*A View of Bar B C Ranch*



*Freight Teams at the Flag Ranch*

### FLAG RANCH

When you choose to "rough it" at Flag Ranch, Ed Sheffield is the man who greets you. He soon makes you feel that you, too, have a share in ranch life.

Flag Ranch is 23 miles from Moran on the Jackson Road, two and one-half miles south of Yellowstone's southern entrance, and a 50-mile stage ride from Ashton, Ida., the nearest Union Pacific point.

There is good trout fishing in the immediate neighborhood. Licenses, tackle, camping supplies, tobacco and incidentals may be procured at the ranch.

Good meals are \$1 each; beds, \$1 per night.

Twenty-five "dudes" may be accommodated in the 15 rooms of the main log building and in tents.

On account of the ranch's isolation, it is best to get in touch early with Ed Sheffield (address mail to Moran, Wyo.) to obtain details on rates and reservations.



*Your Mount Will Be a Saddle Horse—Not an Outlaw*

### GREEN RIVER LAKE LODGE

Green River Lake is at the headwaters of the Gros Ventre River. The cabins and tent houses of the Lodge, near the lake shore, make a pleasing picture. Behind

them rises Big Sheep Mountain to a height of 12,000 feet. The summit affords wonderful views of mountains, glaciers, creeks and canyons.

Mighty glaciers, glassy lakes and turbulent streams invite the camera. Trout can be seen darting in the streams. Hunting is excellent. A motorboat trip to upper Green River Lake and Flattop Mountain is a unique experience, and hikes through the rugged country develop appetites that do full justice to the substantial meals provided at the Lodge.

The Lodge's guest capacity is 20. Sanitation is good and the cabins and tents are heated by stoves.

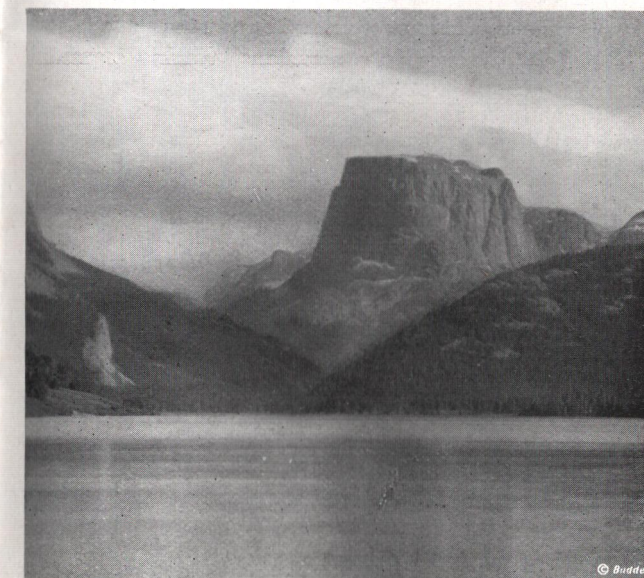
By advance arrangement W. H. Showers, proprietor of the Lodge, licensed guide and camping outfitter, will meet his guests at Rock Springs on the Union Pacific main line, and transport them by motor to the Lodge—a 5-hour ride of 150 miles from Rock Springs; cost \$40.00

Rates are: \$5 per day, \$35 per week, or \$150 per month. (Children, half rate.) Pack and saddle horse hire each, \$2.50 per day; guides, \$5 per day; motorboats, \$5 per day per person; rowboats, \$5 per day.

### JUD RANCH

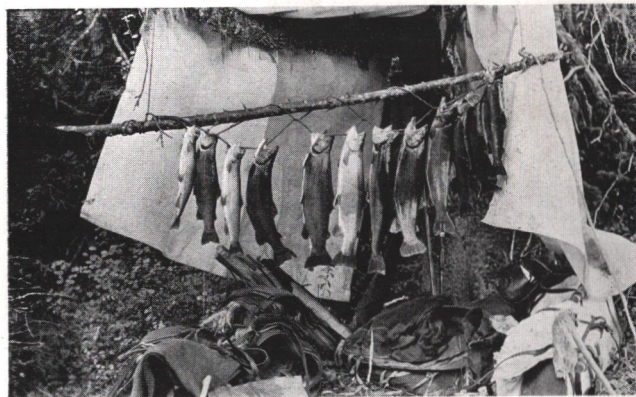
Jud Ranch is a comfortable home with a wilderness for a background. It is situated near Wilson, Wyo., a few miles from Teton Pass through which John Colter, discoverer of Yellowstone Park, made his way in 1807. The ranch consists of a central frame lodge and individual log cabins.

It is reached via the Union Pacific to Victor, Ida., and auto stage, Victor to Wilson. It accommodates 20,



*Lower Green River Lake and Old Square Top*





*You Won't Be Disappointed in Catching Fish*

serves home cooked meals, and has comfortable sleeping quarters.

D. B. Judd (Wilson, Jackson Hole, Wyo.), is "dude wrangler." He makes a specialty of conducting camping trips for school teachers, and arranges big game hunting, fishing and camping trips for veteran sportsmen.

The moderate charge of \$30 per week is made. Apply to D. B. Judd for details covering the service, the hiring of guides, renting of horses, etc.

#### THE J Y RANCH

The J Y Ranch, scenic and remote, huddles on the south shore of Phelps Lake, about 10 miles north of Jackson and 12 miles northwest of Wilson. North and west of it the lofty Teton Mountains rise abruptly from the water's edge.

The cabins are one, two and three-room structures with open fireplaces. Accommodations for 50 guests. Pure spring water is provided. Sanitation is good.

J Y Ranch makes no pretensions of being a summer hotel. Its comforts are rude but real. The cuisine consists of wholesome things, good for hungry people who have been hiking at bracing altitudes of 6,400 feet and higher.



*Bound for the Wilds*

Swimming, boating in Mullins steel boats, mountain climbing, fishing, horseback riding, and hunting furnish a variety of sport for the "dudes." Summer camping trips and big game hunting trips may be arranged; also motor trips to Yellowstone National Park, the Gros Ventre Mountains, Hoback Canyon and Jackson Lake.

Rates are \$65 per week and include cabin, board, boats, laundry and use of saddle horse.

Parties are met by ranch motor at the nearest railroad station, Victor, Ida., by arrangement. Mail should be sent to J Y Ranch, Inc., Teton P. O., Teton County, Wyo., and telegrams to Victor, Ida.



*On the Wilson-Yellowstone Highway Near Jud Ranch*

#### THE K C RANCH HOTEL

The K C Ranch Hotel is in the Hoback Basin near Bondurant, Wyo., 35 miles southeast of Jackson on the Rock Springs-Yellowstone Highway and 150 miles from Rock Springs. It is reached handily from Rock Springs by daily auto stage in about five hours and from Victor, Ida., 60 miles distant on a main highway, in three hours.

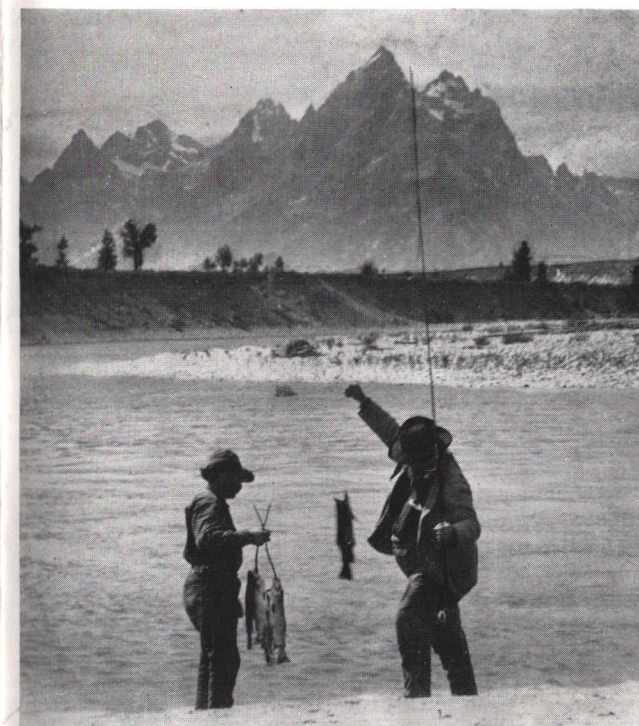
The K C accommodates 30 guests, and an additional number by making use of 12 tent houses. It has bathing facilities and gas lights.

The Hoback River, nearby, provides excellent fishing. Hunting in the immediate vicinity is good.

Trips to the Gros Ventre Peaks, Green River Lake



*You Will Enjoy the Sparkling, Ozonic Air*



*Trout Fishing Near Leek Ranch in Snake River*

and Flattop Mountain are popular. Guides \$5 per day; saddle horses, \$2 per day, pack horses, \$1.50.

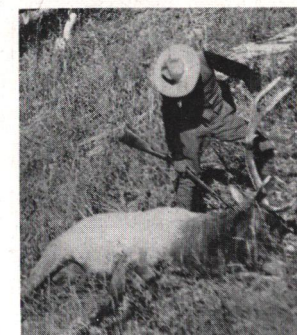
Rates, depending on service, are quoted on request. Write to L. L. Query, Manager, Bondurant, Wyo., for full particulars.

#### LEEK'S RANCH

S. N. Leek's 480-acre ranch, situated at the base of the Little Gros Ventre Mountains on the river which bears the same name, is 28 miles from Victor, Ida., nearest rail point, and 3 miles south of Jackson, Wyo. The highway from Rock Springs connects the ranch with Jackson and Yellowstone National Park.

Folding boats with pneumatic gunwales and outboard gas motors are taken along on trips made from the ranch by car or on horseback to Yellowstone National Park and other places of interest. This is indicative of the quality of service at Leek's ranch.

Ten guests (more when tents are used) may be accommodated. Drinking water is piped from a neighboring spring which also furnishes water power for the ranch's electric light plant. An ice house, the farm garden and the modern dairy operated in connection



*Elk Hunting Near Leek Ranch*





*The Tetons from Jenny Lake*

with the ranch are factors which make meal time a matter of keen anticipation.

Saddle horse hire is included in the rate of \$5 per day. This rate is doubled on camping trips, and then becomes inclusive of every necessary expense of the trip, outfitted and conducted by the ranch management.

Correspond early with S. N. Leek, Jackson, Wyo.

#### MORAN TETON LODGE

Failure to catch a five-pound trout is not to be "put up with," according to B. D. Sheffield, proprietor of Moran Teton Lodge which is situated at the outlet of Jackson Lake near Moran, Wyo. Mr. Sheffield shows his confidence in the good fishing by offering to deduct \$2 per day from a guest's bill when the latter fails to catch a trout weighing five pounds, providing it is agreed that, in the event the guest catches a nine-pound trout, he will pay \$2 per day extra.

Moran Teton Lodge is composed of a group of rustic

log cottages accommodating over 100 guests. There is a large central building with dining and lounging rooms. Modern plumbing and shower baths supplied with hot and cold water insure utmost comfort.

Rates by the week are \$24.50; by the month, \$90. Saddle horse hire is \$2.50 per day, \$14 per week, and \$45 per month. Guides are available.

Elk, moose and bear are found in the adjacent country. Fishing tackle, row boats, launches and other sporting accessories may be procured through the management. The Lodge auto will meet incoming guests at the Victor, Ida., station on one day's notice; charge for one-way trip, \$25, for round-trip, \$35.

Address communications to B. D. Sheffield, Moran Teton Lodge, Moran, Wyo.

#### MOUNTAIN HOME RANCH

Near Bondurant, Wyo., is found Mountain Home, a typical "Dude Ranch" operated by W. A. Hicks. It is 70 miles from Victor, Ida., nearest Union Pacific point, and only 250 yards from a good auto road. Within a radius of 30 miles there is excellent fishing, the very best of which is found on the ranch itself.

Besides fishing, guests may engage in horseback riding, hiking, and camping trips.

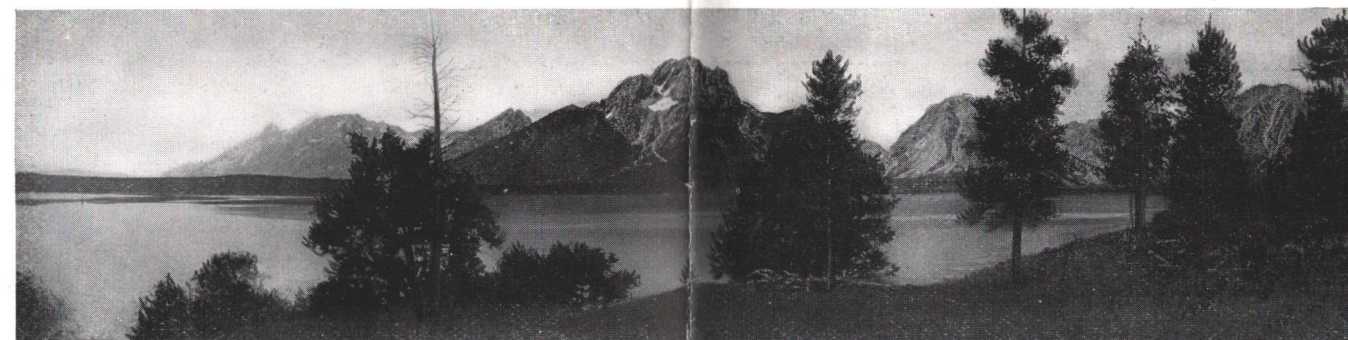
The total guest capacity is 15. Rates per day, American plan, \$3.50; per week, \$30; per month, \$120 (rate for children per month, \$90). Reductions are made for parties of two or more. The management will transport guests from station to ranch at reasonable charges.

Guides may be hired at \$10 per day and saddle horses at 50 cents per hour, or \$2 per day.

To accommodate overflow guests, there are tents, sided and floored, lighted with kerosene lamps and heated with wood stoves. The rate for occupying tents is \$12



*Camp in Teton National Forest—Teton Range in the Background*



*Mt. Moran and Tetons, Across Jackson Lake*

per week. Bathing facilities are convenient and sanitation is well cared for.

Write to W. A. Hicks, Bondurant, Wyo.

#### RED ROCK RANCH

Red Rock Ranch is situated 30 miles east of Jackson, Wyo., and 53 miles from Victor, Ida., the nearest point on the Union Pacific System. It is near Kelly, Wyo., in the charming Crystal Creek Valley 3 miles from the Gros Ventre River—an ideal country both for camera and trout line.

James S. Simpson and W. P. Redmond, Red Rock's proprietors, have accommodations for from 15 to 20 persons. Their specialty is conducting hunting parties for deer, moose, elk, mountain sheep and bear and they practically guarantee a bag to spring hunters.

The cabin and the tent rooms are rude but comfortable. Everything needed to enjoy a real, out-of-doors vacation may be secured at the ranch or at Jackson. Meals are varied, wholesome and appetizing. Sanitation is excellent.

The management will arrange for guides if wanted, and will provide guests with saddle horses. Rates furnished on request by James S. Simpson, Kelly, Wyo.

#### SARGENT'S INN

Daily auto stages from Opal and Rock Springs, Wyo. (both on the Union Pacific main line), stop at Sargent's Inn, which is 87 miles from Opal and 114 miles from Rock Springs.

Sargent's Inn (Daniel, Wyo.) is in an attractive fishing and hunting region, 23 miles south of the Gros Ventre range and about 50 miles southeast of Jackson.

Although duck and chicken shooting is the leading sport, trout anglers are never disappointed.

The Inn accommodates 26; has 12 rooms and a number of tent houses which are sided and floored; also a room for dancing.

Rates are \$80 per month, American plan; \$3.50 per day and \$22.50 per week. Children under 10 years are admitted at half rates; no charge is made for those under 4 years. Correspond with L. W. Sargent, proprietor, Sargent's Inn, Daniel, Wyo., for particulars.

#### S T S RANCH

S T S Ranch, situated on the south fork of the Snake River 2 miles from Moose Post Office, is a good base from which to hunt and fish.

Pack trips to the mountains or to Yellowstone National Park, big game hunting, auto trips to points of interest, shooting of ducks, geese, grouse and sage hens in season—these are the attractions of the S T S.

Rates for stay of one month or less are \$8 per day, including separate cabin and saddle horse; \$50 per week or \$45.00 per week (two in one cabin) for stay of more than one month. Special rates will be quoted for larger parties and those wishing to stay all summer. Laundry is done at \$1.50 per week. There are no other extra charges.

The S T S accommodates 8 persons. It consists of a main cabin, individual cabins and tent houses.

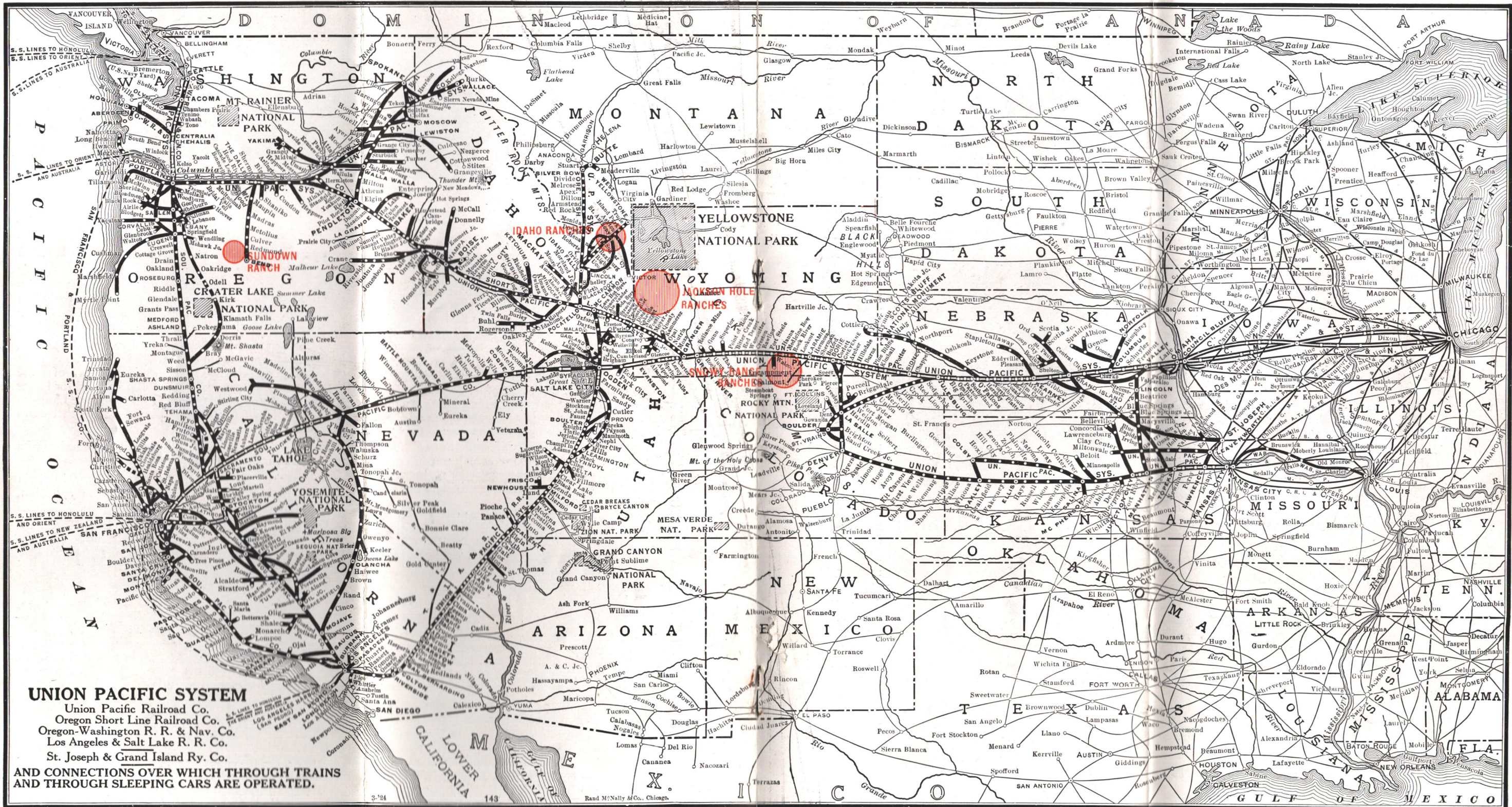
It is reached most conveniently from Victor, Ida., via stage to Jackson and thence by ranch transportation, to be arranged for in advance.

Another good route from the east is via Union Pacific to Rock Springs, thence to Jackson via auto stage, thence to the ranch, 15 miles distant.



*Bears Near Triangle F Ranch*









*Wrangler of the Triangle F*

### TRIANGLE F RANCH

Triangle F Ranch (formerly Fall River Ranch), located on Fall River, a tributary to the Hoback River, is 36 miles southeast of Jackson. It is most conveniently reached via Union Pacific to Victor, Ida., auto stage to Jackson, thence by ranch transportation which can be arranged for in advance. It is limited to 15 guests.

Wallace E. Hiatt, manager, will furnish all necessities (except rifles and personal effects) to "dudes" who wish to hunt. Licenses, ammunition, fishing tackle, candies, tobacco, etc., can be purchased at the ranch store.

Many boulder-dotted trout streams are nearby. The Snake River, Hoback Canyon and Battle Mountain are but short rides from the ranch, and the surrounding country abounds in game, both large and small.

Guests are provided with picturesque, comfortable log cabins. Ranch style meals of the best quality are served in the main dining hall. First class laundry service is furnished. Sanitation is good.

Rates will be quoted on application. Address W. E. Hiatt at Jackson in winter and at Daniel, Wyo., in summer. Jackson, Wyo., is his telegraph address.

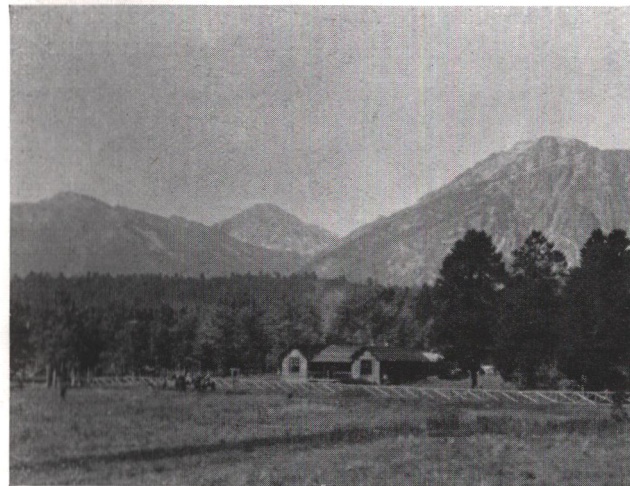


*Killed on the Gros Ventre Range Near Triangle F Ranch*

### WHITE GRASS RANCH FOR BOYS

White Grass is a ranch for boys only. Twenty miles from Jackson, separated from the highway by more than a mile of pine forest, White Grass' 300 acres are easily accessible, although secluded. From the log ranch cabins one may view the Grand Tetons which begin their ascent to 13,747 feet a few hundred yards west of ranch property. White Grass has its own swimming pool and its own garden. Camp sanitation is perfect.

Mrs. Harold Hammond, ranch manager, provides necessary supervision, especially where younger boys are concerned. Fresh milk, vegetables, and fruits are on the menu. Boys sleep in cabins and in floored tents.



*White Grass Ranch for Boys*

The trip from the East (organized at New York City) is made under supervision of men counsellors chosen from universities. At West Yellowstone the party leaves the Union Pacific train, makes a three-day motor tour of the park, then proceeds directly to White Grass. The boys are divided according to age into three groups which take turns making pack trips into the hills. The personnel in charge includes head guide, cook, horse wrangler, packer, doctor and counsellor. These trips pierce the heart of the "Rockies" amongst some of the most beautiful mountain scenery in America.

The season includes July, August and the first week in September. Season rate from New York City and return inclusive is \$900 for each boy. Proportionate rates for boys joining the party at other points. Write to Sinclair Armstrong or Harold Hammond, White Grass Ranch, Teton P. O., Jackson Hole, Wyo. From December 15th to April 20th, S. Armstrong may be reached at 132 High Street, Middletown, Conn.

### Ranches in the Snowy Range Country

The Snowy Range country near Laramie and Saratoga, Wyo., is rapidly coming to the fore as a popular rendezvous for tourists who love the primitive solitudes of mountain, forest and plain.

The fisherman who discovers Brooklyn Lake, Lake Marie, Telephone Lake and the dashing trout streams which tumble down from neighboring peaks is loath, indeed, to depart when his vacation is ended.

Lovers of Nature should grasp an opportunity to become "dudes" on any of the ranches listed in the following paragraphs.



*Photo S. N. Leek*

*Trout for Supper*

### A H RANCH

Anderson and Hubbel's A H Ranch (address, Encampment, Wyo.) is 16 miles south and 6 miles east of Encampment, on the Rocky Mountain Highway.

The ranch accommodates 24 guests in 12 furnished rooms and in floored tents nestling in the foothills of the Medicine Bow range between the Medicine Bow and Hayden national forests. It is equally popular with hunters and fishermen. Streams and lakes provide good trout fishing. Excellent deer hunting in season, sage chicken and duck shooting in the neighborhood.

A H Ranch is open to guests from June 15th to September 15th. Rates (American plan) are \$5 and \$8 per day and \$35 and \$54 per week, the higher rate, in each instance, including saddle horse hire. Rates for children are quoted on request. The management charges \$15 for round trips to Encampment.

After exchanging references and arranging for their stay, prospective "dudes" usually travel via the Union Pacific System lines to Walcott, 152 miles west of Cheyenne, thence southward on branch line to Encampment where they are met by a ranch representative.



*The Snowy Range*

### BOYD'S RANCH

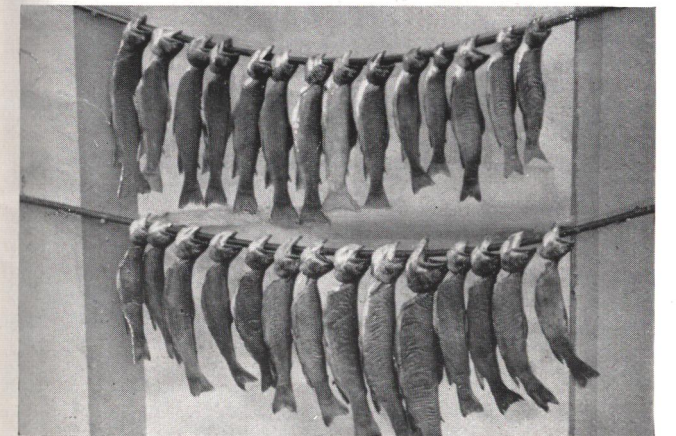
Forty guests may be accommodated at Boyd's Ranch, one and one-half miles from Encampment, Wyo., a point on the Union Pacific. The ranch house has electric lights and provides hot and cold shower baths. Rates per week are \$24.50, per month \$100, per day \$4, American plan. Special rates for children under 10 years are quoted on request. Overflow guests are accommodated in electrically lighted tents.

If notified in time the ranch management will meet parties at the station with a conveyance without charge. An excellent auto road leads direct to the ranch.

"Dudes" at Boyd's Ranch are supplied with saddle horses at \$2 per day or at \$1.50 for less than a day. Guide service is provided at \$3.50 per day.

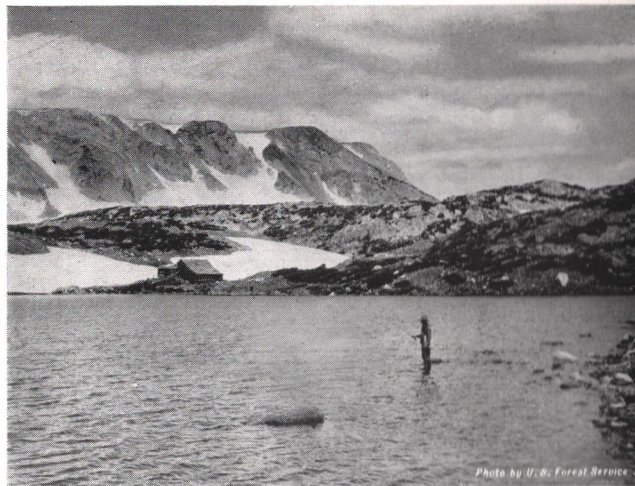
Fishing tackle may be rented through the ranch management or purchased at Encampment. Well stocked trout streams flow through the ranch acreage. Streams and lakes of the Medicine Bow and Snowy Range Mountains, about 12 miles distant, are reached quickly by horseback or car.

Consult a Union Pacific representative concerning transportation and fares and write to Frank Boyd, Boyd's Ranch, Encampment, Wyo., for reservations.



*A Catch of Trout, Boyd's Ranch*





Trout Fishing, Lewis Lake

### BROOKLYN LODGE

Brooklyn Lodge, a "Dude Ranch" near the timberline on Snowy Range, is 8 miles from Centennial and but a short walk from Brooklyn Lake.

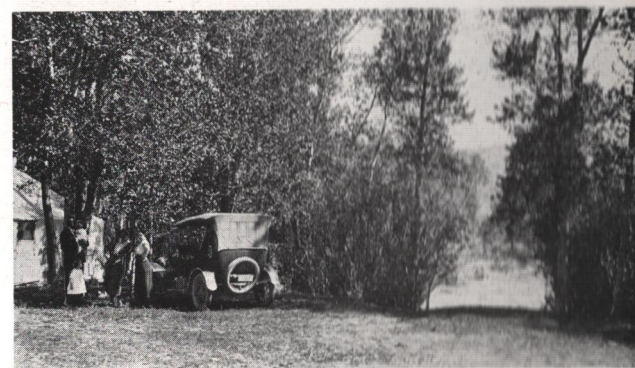
A view of grassy, pine encircled slopes is commanded from the Lodge cabins. Beyond lies mile upon mile of the Medicine Bow National Forest, intersected by the marked trails of the Forest Service.

A hundred lakes and as many trout streams make the Snowy Range country a fisherman's paradise.

The Lodge is 40 miles from Laramie on the Laramie-Brooklyn Lake Auto Road which was completed in 1923. Incoming guests may leave Laramie for the Lodge by auto, or on the C. W. & E. Ry. to Centennial, thence by auto.

The Lodge management will, on request, provide guide and saddle horses. There is a large central hall in which guests may dance and dine. Meals served at all hours.

Rates vary according to service. Write to H. D. Jones, Prop., Centennial, Wyo.



At Boyd's Ranch

### MEDICINE BOW LODGE

Medicine Bow Lodge is 18 miles southeast of Saratoga, Wyo., among the pines of the Medicine Bow National Forest at an elevation of 8,000 feet and within walking distance of three excellent trout streams.

Fishing is the biggest attraction in the neighborhood. Special pack trips to the Snowy Range, from 8 to 10 miles away, are managed by skilled guides who do all the cooking and handle the horses. Guides, \$10 per day, saddle horses, \$2.50 per day.

Some of the more important of the 100 lakes in the region are Marie, Lookout, Mirror, Class, Lewis, Libby, North Gap, South Gap, Telephone, Reservoir, Magnolia, Erasta, Silver, Twin and Lost Lake.

From 90 to 100 guests may be accommodated in the 20 Lodge cabins and its 20 floored and sided tent houses. There is a general bath house supplied with abundant hot and cold water. Sanitation is first class.

The rate per week, including board, is \$21 for tents and \$24 for cabins. Daily rate, American plan, is \$3.50. Children under 7 years at half rates.



Fishing in Reservoir Lake

Charles L. Plummer, the official "dude wrangler," will arrange to meet guests at the Union Pacific station at Saratoga and for a moderate charge convey them to the ranch.

Address Plummer & Co., Saratoga, Wyo.

### MOUNTAIN VIEW HOTEL

Mountain View Hotel, operated by Mrs. Gustav Sundby, is located at Centennial, Wyo.; it is reached via the Union Pacific to Laramie and the C. W. & E. Ry., Laramie to Centennial, or by auto from Laramie.

Within one-half mile of the hotel are well stocked trout streams. The famous lakes of Snowy Range are within 8 miles.

Mountain View accommodates 50 guests. Good meals are served at regular hours. Rates, American plan, \$2 and up per day, \$5 and up per week and \$60 and up per month. Children two-thirds regular rates.

Saddle horses, \$2.50 per day and guide service may be arranged for at the hotel.

Camp requisites, fishing tackle and licenses are available at Centennial.

A regular patronage has, for the past few years, kept the Sundby establishment well filled. Many have already made reservations for this summer. However, prospective guests who communicate early with the management, will be able to make arrangements for a stay.

### SNOWY RANGE RESORT

Snowy Range Resort is located at Barber Lakes, 4½ miles from Centennial on the Brooklyn Lake Road. Streams have been diverted to form artistic, well stocked fish ponds at the very door of the main building.



Lookout Peak Reflected in Lookout Lake

This rustic log hotel is nearing completion and is expected to be finished in June, 1924. It will accommodate approximately 30 guests. It has 13 rooms, including a large dance hall and a spacious dining room. Nearby, 14 small cabins are provided in pleasant pine sheltered retreats overlooking rocky streams. All buildings are electrically lighted.

Rates per day, \$6; per week, \$40. Saddle horses and guide service are available.

Write to J. R. Sullivan, Snowy Range Resort Company, Laramie, Wyo., or to Stanley Edwards, Laramie Council of Industry, Laramie, Wyo., for particulars in connection with the service.

### TWIN RIVER RESORT

Twin River Resort, less than 2 miles from Centennial, Wyo., is a group of rustic cottages set in an aspen grove through which tumbles a clear mountain stream. The cabins accommodate 40 "dudes." Overflow guests are provided with floored tents.



Nelson's Twin River Resort

Pure spring water, good sanitation and bathing facilities are provided. There is a dancing floor and a tennis court.

Ed Nelson, proprietor, keeps candy, soft drinks, tobacco, fishing tackle, etc., on hand. He provides saddle horses at \$3 per day.

Good horseback trails lead to Brooklyn Lake Ridge, Lookout Mountain and Medicine Bow Peak (altitude 12,005 feet) and to trout lakes and streams.

Rates, American plan, are \$2.50 per day and up for cabin rooms; \$1.50 per day and up for tent houses. Children under 12 years at half rates. Write Ed Nelson, Centennial, Wyo., for detailed information.

### WRIGHT'S RANCH

Wright's Ranch is located 23 miles west of Laramie on a good auto road and one-half mile from Fillmore Crossing, a stop on the C. W. & E. Ry. which connects with the Union Pacific at Laramie. Transportation from Fillmore is furnished free by the ranch management.

A good trout stream runs within a few yards of the ranch house. Tackle may be rented.

An auto road, one-half mile distant, leads to the lakes at the foot of Snowy Range, 16 miles away. Othersmooth



Wright's Ranch on Little Laramie River



roads and trails penetrate the surrounding country in which good hunting and fishing may be enjoyed.

There are 16 rooms available, accommodating 40 "dudes." Home cooking is featured. The rate per month, American plan, is \$50 (half rates for children). Rates per day \$2.50, per week \$14. Tents are provided for overflow guests. The ranch has tennis and croquet courts. Guests may have use of a victrola when they desire to dance. Saddle horses \$1.50 per day.

Address G. L. Wright, Fillmore, Wyo.

## Ranches in Idaho and Oregon

The breezy welcome of congenial people; weather pre- vailingly pleasant; good sport, whether it be fishing, hunting or horseback riding—these things one expects and finds when he becomes a "dude" on one of Idaho's or Oregon's fine ranches.

There are striking panoramas of mountain and gorge, entrancing forest vistas, rock framed glimpses of flash- ing water, that call the kodak right out of its case. And as for the savory ranch meals—how they vanish before the almost unbelievable appetites that are acquired in the great out-of-doors!

### BIG SPRINGS INN

Big Springs Inn, one-eighth mile from the station of Big Springs, Ida., is a log hotel with accommodations for 45 people. There are 10 bedrooms in the Inn and 15 tent houses which are sided and floored.

The Inn serves meals family style, making a specialty of trout dinners. Guests, however, may cook their own meals if they so desire, over campfires or indoors in a place especially provided for this purpose.

Saddle horses and guides are available. Gasoline, tobacco and incidentals are sold at the hotel store.

Rates are \$3 per day or \$18 per week. For particulars address J. W. Kooch, manager, Big Springs, Ida.



Lower Falls, Snake River, Idaho

Main line Union Pacific trains from east and west make connections at Pocatello for Big Springs during the Yellowstone Park season, approximately June 20th to September 15th.

### THE HARRY NEISS RANCH

The Harry Neiss "Dude Ranch," which accommodates 15 guests, is located on the Snake River near Ashton, Ida. Ashton, in a good fishing and hunting territory, is on the Yellowstone branch of the Union Pacific.



A Morning's Bag of Ducks

"Dudes" who occupy the several Neiss Cottages and floored tent houses are permitted to cook their own meals if they wish. Appetizing home style meals are served, however, by the management.

Boats, horses and guides are available. Gasoline, ar- ticles of clothing and tobacco are sold at the ranch store.

Write Harry Neiss, Ashton, Ida., for rates and details.

### MACK'S INN

The rustic cabins and trim tent houses of Mack's Inn (operated by W. H. Mack, Trude, Ida.) afford accom- modations for 30 people. The Inn, reached by a main traveled highway, is on the Snake River near Trude.

Fishing is good around Trude which is on the Yellow- stone branch of the Union Pacific, conveniently located for those who wish to tour Yellowstone National Park.



Mt. Jefferson and Metolius River, Oregon

The Inn serves good meals, but guests who pitch their own tents in the campgrounds provided by the Inn may cook their own meals if they so desire.

"Dudes" at Mack's Inn may rent boats at 50 cents per hour. Guides and saddle horses are available. Gaso- line, camp accessories, tobacco, etc., may be purchased.

For rates and details write W. H. Mack, Trude, Ida.

### SUNDOWN RANCH

The Sundown Ranch is a one and one-half hour motor drive from Bend, Ore., the terminus of the Bend branch of the Union Pacific. It is 7 miles north of Sisters, Ore., at the foot of Black Butte, the outlying sentinel of the Cascade Mountains. The teeming trout lakes of the Deschutes National Forest are within easy reach.

Cabins, each accommodating 2 guests, have porches and bathrooms, and are heated by wood burning stoves. Club room, assembly room and dining room are in a large central building.

Guests whose families require more than one cabin, may arrange to have tents pitched close by for accom- modation of older children or personal attendants. Eight persons only may be accommodated in cabins. Reser- vations are not made for stays of less than one week. Clean, wholesome food is served.

Deer may be hunted in the forest in season, Septem- ber 10th to October 31st, and bear, not protected at any time, may be hunted successfully in the spring months.

The season for ducks is October 1st to January 15th. Although good duck hunting is found within a mile of the club room, guests often prefer to go farther afield to secluded spots on the Metolius River, Big Lake, Suttle Lake and Blue Lake, where the mallards are even more plentiful. Nonresident hunting licenses may be procured at a cost of \$10. Guides, at from \$5 to \$10 per day, are available, but should be arranged for a month in advance.

The rates (saddle horse included) are \$50 per person per week or \$75 per week for sole occupant of a cabin.

Write Secretary of Sundown Ranch, Sisters, Ore.



Ready for a Ride into the Mountains—Sundown Ranch

## TRAFFIC REPRESENTATIVES OF THE UNION PACIFIC SYSTEM

ABERDEEN, WASH.—3-4 Union Passenger Station, K and River Streets  
W. J. LEONARD, District Freight and Passenger Agent  
ASTORIA, ORE.—Union Pacific System Wharf  
G. W. ROBERTS, District Freight and Passenger Agent  
ATLANTA, GA.—1232 Healey Building  
W. C. ELGIN, General Agent  
BEND, ORE.—F. E. STUBBAKER, Traveling Freight and Passenger Agent  
BIRMINGHAM, ALA.—742 Brown-Marx Bldg., 1st Ave. and 20th St.  
J. H. DOUGHTY, General Agent  
BOISE, IDAHO—325 Idaho Bldg., 8th and Bannock Sts.  
J. L. PRIEST, General Agent  
BOSTON, MASS.—207-8 Old South Bldg., 294 Washington St.  
W. MASSEY, Gen'l Agent  
BUTTE, MONT.—229 Rialto Bldg., 4 S. Main St.  
HENRY COULAM, General Agent  
CHEYENNE, WYO.—Union Pacific Station  
O. B. STAPLETON, Ticket Agent  
CHICAGO, ILL.—1419-21, Garland Bldg., 58 E. Washington St.  
G. R. LEMMER, General Agent Passenger Department  
CINCINNATI, OHIO—704 Union Central Bldg., Fourth and Vine Sts.  
W. H. CONNOR, General Agent  
J. STANLEY ORR, District Passenger Agent  
CLEVELAND, OHIO—941 Union Trust Bldg., 925 Euclid Ave.  
W. H. BENHAM, General Agent  
COUNCIL BLUFFS, IOWA—37 Pearl St.  
H. B. ELLER, City Ticket Agent  
DALLAS, TEXAS—909 Magnolia Bldg., Commerce and Akard Sts.  
JULIAN NANCE, General Agent  
DENVER, COLO.—601 Seventeenth St.  
W. K. CUNDIFF, Asst. Gen'l Pass'r Agent  
DES MOINES, IOWA—407 Equitable Bldg., 6th and Locust Sts.  
D. M. SHRENK, General Agent  
DETROIT, MICH.—508 The Free Press Bldg., 127 Lafayette Blvd., W.  
A. R. MALCOLM, General Agent  
FRESNO, CALIF.—207-8 Rowell Bldg., Tulare St. and Van Ness Ave.  
T. F. BROSNAHAN, General Agent  
GLENDALE, CALIF.—129 South Brand Blvd.  
C. A. REDMOND, City Passenger Agent  
HOLLYWOOD, CALIF.—Christie Hotel, 6732 Hollywood Blvd.  
W. L. RAMBO, City Passenger and Ticket Agent  
KANSAS CITY, MO.—805 Walnut St.  
S. C. RHODES, Gen'l Agent Pass'r Dept.  
LEAVENWORTH, KAN.—Union Station  
A. E. MARTEN, General Agent  
LEWISTON, IDAHO—224 Breiler Bldg.  
H. J. BERGER, Trav. Freight and Pass'r Agent  
LINCOLN, NEB.—Chamber of Commerce Bldg., 204 N. 11th St.  
A. D. GRANT, General Agent  
LONG BEACH, CALIF.—120 W. Ocean Blvd.  
R. W. SMOCK, General Agent  
LOS ANGELES, CALIF.—City Ticket Office, 221 South Broadway  
J. CRUICKSHANK, General Agent Passenger Department  
T. JACKSON, District Passenger Agent  
MILWAUKEE, WIS.—1215 Majestic Bldg., 221 Grand Ave.  
E. G. CLAY, Gen'l Agent  
MINNEAPOLIS, MINN.—618 Metropolitan Life Bldg., 125 South Third St.  
E. H. HAWLEY, General Agent  
NEW ORLEANS, LA.—1001 Carondelet Bldg., 226 Carondelet St.  
R. A. PETERS, General Agent  
NEW YORK, N. Y.—309-10 Stewart Bldg., 280 Broadway  
J. B. DEFRIEST, Gen'l Agt.  
I. W. CARTER, District Passenger Agent  
OAKLAND, CALIF.—409 Henshaw Bldg., 433 14th St.  
JAMES WARRACK, General Agent  
OCEAN PARK, CALIF.—149 Pier Ave.  
S. C. FROST, District Freight and Pass'r Agent  
OGDEN, UTAH—214 David Eccles Bldg., 390 24th St.  
W. H. CHEEVERS, Gen'l Agent  
OMAHA, NEB.—Union Pacific Headquarters Bldg., 1416 Dodge St.  
A. K. CURTIS, City Passenger Agent  
PASADENA, CALIF.—395 E. Colorado St.  
F. H. ADAMS, General Agent  
PHILADELPHIA, PA.—508 Commercial Trust Bldg., 15th and Market Sts.  
F. L. FEAKINS, General Agent  
S. C. MILBOURNE, Assistant General Agent  
PITTSBURGH, PA.—216 Oliver Bldg., Smithfield St. and Sixth Ave.  
JOHN D. CARTER, General Agent  
EDWARD EMERY, District Passenger Agent  
PORTLAND, ORE.—628-37 Pittock Block, 385½ Washington St.  
L. E. OMER, City Passenger Agent  
REDLANDS, CALIF.—14 Cajon St.  
W. H. PETTIBONE, City Freight and Pass'r Agent  
RENO, NEV.—200 Nevada State Life Bldg., 2d and Center Sts.  
F. D. WILSON, General Agent  
RIVERSIDE, CALIF.—Glenwood Mission Inn, 680 Main St.  
F. E. MIDDLETON, General Agent  
SACRAMENTO, CALIF.—221 California Fruit Bldg., 1006 Fourth St.  
C. T. SLAUSON, General Agent  
ST. JOSEPH, MO.—302 Bartlett Trust Bldg., Frederick Ave. and Felix St.  
S. E. STORR, General Freight and Passenger Agent, St. J. & G. I. Ry. Co.  
ST. LOUIS, MO.—2053 Railway Exchange Bldg., 611 Olive St.  
J. L. CARNEY, General Agent  
SALT LAKE CITY, UTAH—City Ticket Office, Hotel Utah, Main and S. Temple Sts.  
E. A. SHEWE, District Passenger Agent  
SAN DIEGO, CALIF.—Fourth and Plaza Sts.  
C. C. JEWETT, General Agent  
SAN FRANCISCO, CALIF.—673 Market St.  
H. A. BUCK, District Passenger Agent  
SAN PEDRO, CALIF.—521 Beacon St.  
J. V. CARROLL, District Freight and Pass'r Agent  
SANTA ANA, CALIF.—305 N. Main St.  
C. S. BROWNE, General Agent  
SEATTLE, WASH.—201 Union Station, W. H. OLIN, Asst. Gen'l Frt. and Pass'r Agent  
1405 Fourth Ave.  
H. A. LAWRENCE, Gen'l Agent Pass'r Dept.  
SPOKANE, WASH.—727 Sprague Ave.  
F. H. HOCKEN, Dist. Frt. and Pass'r Agent  
TACOMA, WASH.—106 S. Tenth St.  
WM. CARRUTHERS, Dist. Frt. and Pass'r Agent  
TORONTO, ONT.—201 Canadian Pacific Bldg., 69 Yonge St.  
GEORGE W. VAUX, General Agent  
WALLA WALLA, WASH.—Baker Bldg., Main and Second Sts.  
C. F. VAN DE WATER, Dist. Frt. and Pass'r Agent  
WHITTIER, CALIF.—U. P. Sys. Pass'r Sta.  
G. B. KENNARD, City Frt. and Pass'r Agent  
YAKIMA, WASH.—Union Pacific Bldg., 104 W. Yakima Ave.  
H. M. WEST, District Freight and Passenger Agent

C. J. COLLINS, Manager  
DEPARTMENT OF TOURS (C. & N. W. RY.—UNION PACIFIC SYSTEM)  
148 S. Clark Street CHICAGO, ILL.

W. H. MURRAY  
General Passenger Agent  
OMAHA, NEB.

D. S. SPENCER  
General Passenger Agent  
SALT LAKE CITY, UTAH

WM. McMURRAY  
General Passenger Agent  
PORTLAND, ORE.

T. C. PECK  
General Passenger Agent  
LOS ANGELES, CALIF.

W. S. BASINGER  
Passenger Traffic Manager  
OMAHA, NEB.