

SUMMER TOURS



Season 1922

PARKS ARE TRULY NATIONAL

WHO will gainsay that the parks contain the highest potentialities of national pride, national contentment, and national health? A visit inspires love of country; begets contentment; engenders pride of possession; contains the antidote for national restlessness. It teaches love of nature, of the trees and flowers, the rippling brooks, the crystal lakes, the snow-clad mountain peaks, the wild life encountered everywhere amid native surroundings. He is a better citizen with a keener appreciation of the privilege of living here who has toured the National Parks.

Stephen D. Mather

Director National Park Service
Department of the Interior

THE NATIONAL PARKS

OPENING AND CLOSING DATES

Rocky Mountain National Park (Colorado)
Opens June 15th—Closes October 1st

Yellowstone National Park (Wyoming)
Opens June 20th—Closes September 15th

Mount Rainier National Park (Washington)
Opens June 15th—Closes September 15th

Crater Lake National Park (Oregon)
Opens July 1st—Closes September 30th

Hawaii National Park (Hawaiian Islands)
Open all the year

Yosemite National Park (California)
Open all the year

Sequoia National Park (California)
Opens May 24th—Closes October 10th

General Grant National Park (California)
Opens May 24th—Closes October 10th

Zion National Park (Utah)
Opens May 15th—Closes October 15th

Glacier National Park (Montana)
Opens June 15th—Closes September 15th

Mesa Verde National Park (Colorado)
Opens May 15th—Closes November 1st

Hot Springs National Park (Arkansas)
Open all the year

Grand Canyon National Park (Arizona)
Open all the year

Wind Cave National Park (South Dakota)
Opens June 1st—Closes September 30th



**See America First
and the National Parks First of All.**





"Two National Parks in Two Weeks"

Season 1922

FOR twenty-two years "North Western-Union Pacific Escorted Tours" have successfully directed the vacation travel of tens of thousands of the American people.

Our two weeks Escorted Tours for 1922 provide a recreational trip with relief from all travel responsibilities and are herewith presented at cost prices. Our escorted tour tickets include all railroad transportation and, at actual cost, 500 miles by automobile, sleeping car, meals, hotels—everything arranged in advance and furnished with escort without additional charge.

This season we offer "Two National Parks in Two Weeks," featuring the wonderful Yellowstone and the splendid Rocky Mountain (Estes) National Parks. Five days in the former and three days in the latter, with side excursions into Utah and out from Denver, make up, with the train travel, the best two weeks' vacation trip in America.

Another important point: We have chosen the fast and direct rail routes in order to avoid the tedium of any unnecessary train travel. Widely travelled people know that the *best* mountain scenery is not adjacent to transcontinental railways but lies in the great reservations and mountain ranges which can be reached only by highway and trail. Our tours are not only to the mountains but *into* the mountains. In Yellowstone, Utah and Colorado, our passengers travel 500 miles in new high-power automobiles. These luxurious motor trips carry our passengers into the very heart of the finest scenery on this continent.

To the experience of this Bureau, the care with which the tours are planned and carried out, and the persuasive prices, add the prestige of the Chicago & North Western Ry., and Union Pacific System, both criterions of excellence, that sponsor these tours—the result is the ideal vacation tour.

C. J. COLLINS, Manager

**BUREAU OF SERVICE
NATIONAL PARKS AND RESORTS
ESCORTED AND INDEPENDENT TOURS**

MAINTAINED BY

CHICAGO & NORTH WESTERN RY.

UNION PACIFIC SYSTEM

148 S. CLARK ST., CHICAGO,
TEL. DEARBORN 2323

"North Western-Union Pacific Tours"



Big Thompson Canyon, front door to Rocky Mountain National Park
and the finest canyon drive in the West

"Two National Parks in Two Weeks"

The Story of the Trip

This is the story of a vacation trip *de luxe* to Yellowstone National Park, Rocky Mountain (Estes) National Park, Utah and Colorado. Note particularly the large map in the center of the book. At a glance it reveals the scope of the train travel and the automobile tour in Yellowstone and Colorado.

Our Escorted Tours leave Chicago every Saturday night during the park season commencing June 17, also every Thursday during July and August. Persons living outside of Chicago join our tours in Chicago on the day of departure, or at the most convenient westward point en route. The regular National Parks Tours require two weeks. Passengers may take all or part of these complete, economical and absolutely first-class trips. The tours as scheduled are the best possible vacation trips, but if for any reason you cannot return according to our routes we will sell you the tour for the going trip only, and you can leave the party at Yellowstone, Salt Lake City or any other point, returning how or when you please. Each individual booking receives the personal attention of the management of the Tours. Our staff of travel specialists is at your disposal to assist you in making the most of every day of your western tour. For details of schedules, rates, etc., see pages 10 and 11.

"WESTWARD, HO!" (First day en route)

As might be expected these finest of tours start westward from the finest of railroad stations, the Chicago Terminal of the Chicago & North Western Ry. (See illustration.) This is the North Western's magnificent memorial to the life and spirit of the West. From Chicago to Omaha our train glides over the famous, smooth, double-tracks of this premier carrier, protected by automatic electric block safety signals.

West of Omaha we use Union Pacific System, sponsored by the statesmanship of Lincoln, re-created by the genius of Harriman, and dedicated by both to the "uniting of east and west with a boulevard of steel." The Lincoln Highway follows this route.

From Illinois to Wyoming our route is over prairie and plain; from Wyoming westward we are in the mountains. You will spend happy hours on the rear platform of the observation car following, in fancy, that historic highway, the old Overland Trail, first trod by buffalo and worn into a path by Indian moccasins, then followed by fur traders and trappers, grim Mormons and sturdy forty-niners. There will be no dust nor grime. The roadbed is disintegrated granite taken from Sherman Hill, each tiny particle as clean as a pebble.

A word about the dining car meals. During the two weeks' trip, our guests will eat ten meals in our dining cars. "An abundance of good food, well cooked and served with a smile" is a motto of the Chicago, Union Pacific & North Western Line.

TROUT DINNER IN OGDEN CANYON

On the second day, in Western Wyoming, our train enters the mighty canyons of the Echo and the Weber. These winding mountain corridors bring us to Ogden, Utah, where our party stops for the remainder of the afternoon and evening. This city is famed far and wide for Ogden Canyon, a cleft in the Wasatch Mountains 2,000 feet deep, through which tumbles a torrential mountain stream. Our party rides up this canyon to "The Hermitage" (see illustration) for the feature meal of the entire trip, a "trout and chicken dinner." There is no haste. We have time not only for dinner but to lounge on the big rustic veranda, drinking deep of the mountain air and watching the evening shadows darken the canyon walls overhead. Our train leaves Ogden for West Yellowstone at 9.05 p.m.

IN GEYSERLAND (Third day en route)

We arrive at the West Yellowstone Gateway before breakfast. The cool crisp air exhilarates. Something tells you that you are on the threshold of a tremendous scenic adventure. After breakfast, our party takes automobiles which have been reserved in advance and we set forth on a five days' auto tour that will realize all our dreams.

"North Western-Union Pacific Tours"



Chicago Terminal of the Chicago & North Western Ry.
All our tours leave from this magnificent station

This informal story will not attempt to portray the glories of the Yellowstone. It is assumed that you have heard about it and read about it and seen pictures of it all your life. If this be true, you are concerned now about practical matters which have to do with *how* you see it.

The large comfortable automobile has superseded the stage coach. To be sure this takes away something of the frontier picturesqueness, but the automobile makes the trip more comfortable, safer, opens up new places of interest, and allows double time at Old Faithful and the Grand Canyon.

PALATIAL YELLOWSTONE HOTELS OR DELIGHTFUL PERMANENT CAMPS

You have heard of that poem in rusticity, Old Faithful Inn! Our tourists spend a night and eat four meals there. Less famous, but more spacious and luxurious, is the new Canyon Hotel, an inspired adaptation of European hotel ideas to Yellowstone environment. The "lounge" of this hotel is large enough for a thousand couples to dance at one time. We use all the first-class Yellowstone Park hotels on these trips.

We also give escorted service with the Yellowstone Camps Company for passengers who prefer the popular camping trip. The permanent camps are located near the hotels. They are clean, comfortable, and sanitary; and the service emphasizes all the wholesome pleasures of "camping out."

FIRST DAY IN YELLOWSTONE (Third day en route)

The morning ride is from West Yellowstone Station to Old Faithful, a distance of thirty miles. You make a wise choice in entering the Park at this Western Entrance because the

"Two National Parks in Two Weeks"



Union Pacific System—Double-track, protected by automatic electric safety-signals
On the official route of our tours

government road from this point, winding through the Park, brings us to the principal attractions in their proper sequence. Old Faithful Inn is in the heart of the Upper Geyser Basin where all the great geysers are located. You can sit on the broad gallery of the Inn and watch Old Faithful play only 200 yards away! During the afternoon our party is taken over the Basin. By nightfall you will agree that this is the "most weird spot in the Universe."

SECOND DAY IN YELLOWSTONE (Fourth day en route)

The morning is spent at Old Faithful. Short walks from the hotel discover multi-colored pools and more geysers. After lunch a 35-mile motor trip takes the party to Lake Hotel, a restful structure overlooking Yellowstone Lake. The late afternoon affords time for fishing, boating, mountain climbing or "just resting." After dinner, see the bears, big and little, cinnamon and "silver tip," come out of the forest for their twilight meal.

THIRD DAY IN YELLOWSTONE (Fifth day en route)

We leave the hotel at 10.00 a.m., drive sixteen miles to the Grand Canyon, visit Artist Point and arrive at the Canyon Hotel at noon. The Grand Canyon is the most brilliantly colored spectacle in nature. Great cataracts tumble into its depths. One of these falls drops a greater distance than the height of Chicago's Masonic Temple.

FOURTH DAY IN YELLOWSTONE (Sixth day en route)

The fourth morning is also spent at the Canyon. You will wish you could stay a month. If you are robust, you can climb down into the Canyon and discover new sensations in its sublime depths. At 1.15 p.m. our party boards its motor cars and goes north-

"North Western-Union Pacific Tours"



Weber Canyon, Utah. In center and at left are double tracks of the Union Pacific R. R.
At right is the Lincoln Highway

ward through Dunraven Pass, visiting Tower Falls and the strangely different Second Canyon of the Yellowstone. This part of the Park, opened up by the advent of the auto, gives Yellowstone a new highway, the Chittenden Road, which is superior, scenically and from an engineering standpoint, to any other road in the Yellowstone region. "Bowknot" curves, lofty passes, broad vistas, towering overhanging cliffs, pinnacles, waterfalls, wild game and wild flowers make up a partial list of the attractions on this new route, ending at Mammoth Hot Springs Hotel.

FIFTH DAY IN YELLOWSTONE (Seventh day en route)

Our party spends the entire morning in an inspection of the terraces of the Mammoth Hot Springs. Since the destruction of the pink and white terrace of New Zealand these springs stand without a counterpart in the world. After visiting this region, Jupiter Terrace, Hymen Terrace, and Devil's Kitchen will be woven in the fabric of lasting memories. At 1.30 p.m. we leave Mammoth for the last afternoon in the Park, driving south and west forty-seven miles to West Yellowstone Station. We stop en route at Norris Geyser Basin. The late afternoon ride down Madison River Canyon ends our visit to Nature's Great Museum where she exhibits, as nowhere else, cascades, cataracts, hot spring terraces, geysers, multi-colored mud pots, petrifications, colored canyons, and wild animals.

FROM YELLOWSTONE TO SALT LAKE CITY

At Pocatello, Ogden, or Salt Lake City, passengers may leave the organized tour for destinations on the Pacific Coast, or any other points not on our designated schedule. If you are interested in an extended trip of this kind, it is easy for us to arrange.

"Two National Parks in Two Weeks"



Hermitage Hotel in Ogden Canyon. Our train stops seven hours for a side-trip up this famous canyon

SALT LAKE CITY (Eighth day en route)

We spend all day in Salt Lake City, the capital not only of Utah, but of the Inter-Mountain Empire. No city in America is more widely famed and few cities measure up so nearly to the traveler's preconceptions. We make our headquarters and take our meals at the magnificent Hotel Utah—a \$2,500,000 hotel.

The day's entertainment at Salt Lake City is guaranteed to take up every minute with interesting experiences and observations. The Mormon Temple! The Great Salt Sea! Verily, these are names to conjure with. We take a leisurely sight-seeing tour of the city. This ride includes not only all the historically famous Mormon places, but the broad boulevards, parks, and civic centers. After luncheon our party is taken out to Saltair, the beach resort on the shores of Great Salt Lake. This resort is fifteen miles distant from Salt Lake City, and the trip is made by train. Unless you have bathed in the Dead Sea of Palestine, you will not be prepared for the buoyancy and exhilaration of these waters. We leave Salt Lake City at 5.15 p.m. for Colorado, dining on the train.

FIRST DAY, ROCKY MOUNTAIN NATIONAL PARK REGION (Ninth day en route)

We arrive at Denver, Colo., via Union Pacific System at 12.15 noon the tenth day. After luncheon at the Albany Hotel we board the large, comfortable motor cars of the Rocky Mountain Parks Transportation Company for the most popular of our national parks, where we spend the next three days. Our afternoon route is up the Big Thompson Canyon, an auto highway ride which for magnificent heights and sheer depths is not equaled elsewhere in the Rocky Mountains. Turn at once to the frontispiece of this book and witness the camera's verification of this statement. At 6.30 p.m. our motor cars are due at the Lewiston Chalet, eighty-seven miles from Denver via

"North Western-Union Pacific Tours"



A section of Salt Lake City showing the Mormon Temple, Hotel Utah and the Wasatch Mountains in background

route taken. Rocky Mountain National Park! In nobility, in calm dignity, in glory of stalwart beauty, there is no mountain group to excel the company of snow-capped veterans of all the ages which stands at everlasting parade behind its grim, helmeted captain, Longs Peak. There is probably no other scenic neighborhood of the first order which combines mountain outlines so bold with a quality of beauty so intimate and refined. Just to live in the valleys in the eloquent and ever-changing presence of these carved and tinted peaks is itself satisfaction.

SECOND DAY, ROCKY MOUNTAIN NATIONAL PARK REGION

(Tenth day en route)

It is always desirable to rise early in Rocky Mountain National Park. From the Chalets an ideal view of a glorious Rocky Mountain sunrise may be obtained, in itself well worth a visit to this region. The morning may be spent as one chooses. Some may wish to explore the mountains on foot, others to go farther on horseback, while many prefer to enjoy the mountain scenery from the verandas. No motor ride of the entire two weeks' vacation tour will give the spice and flavor of our ride this afternoon to the foot of Longs Peak, at the base of which is located Longs Peak Inn, the rustic hotel-lodge of the famous naturalist, Enos Mills. Enos Mills welcomes you and his smile is the spirit of the place. We tarry long enough to make the acquaintance of his friends—the squirrels, chipmunks and saucy bluejays. A trip is then made over the High Drive through Moraine Park to Stead's. The view of the main range from the summit of the High Drive is beyond description. Return to the Chalets is made via the Beaver Flats where one of the finest examples of Beaver work can be found.

"Two National Parks in Two Weeks"



Powerful and easy riding automobile operated in the National Parks
Our tours use these safe, comfortable, luxurious cars

THIRD DAY, ROCKY MOUNTAIN NATIONAL PARK REGION (Eleventh day en route)

The following morning we leave the Chalets and proceed to Grand Lake, via Estes Park Village, thence by the Fall River Road, stopping first at the U. S. fish hatcheries. The completion of the Fall River Road has opened to the motor traveler the widely beautiful and hitherto inaccessible western slope of the Continental Divide. Our large and powerful automobiles wind their way ever upward, through Horseshoe Park, until they cross the Divide at Milner Pass, altitude 10,759 feet. They proceed southward on the western slope of the Snowy Range, and shortly after noon reach Grand Lake, the largest and one of most beautiful lakes in the Colorado Rockies. Overlooking its placid blue waters, a mile and a half above the level of the sea, is Grand Lake Lodge, where we spend the afternoon and night.

FOURTH DAY, ROCKY MOUNTAIN NATIONAL PARK REGION (Twelfth day en route)

From Grand Lake, the route follows the North Fork of Grand River, passes Granby, and ascends the Valley of the Fraser River to its source. The Continental Divide is again crossed at Berthoud Pass, whence new and wonderful panoramas of the Rockies are unfolded. Our cars continue down spectacular Clear Creek canyon, past Georgetown and Idaho Springs (where stop is made for lunch), then climb upward for a spin through Denver's Mountain Parks. A short ride over smooth highways brings us back to Denver.

DENVER

At Denver we headquarter and take dinner at The Albany, one of the city's finest hotels. No tour of the West is complete without Denver. It is the eastern portal to the mountain country. The city is famous for its public buildings, parks and progressive commercial life.

The afternoon and evening are left open for shopping and "go as you please" about the city. The autos will call at the Albany Hotel at 10.00 p.m. and transfer us to the Union Station, from which our Pullmans leave Denver at 11.30 p.m. for Chicago and the East.

SCHEDULES

Yellowstone-Utah-Colorado Tours

Under Escort

FOURTEEN DAY TOURS

LEAVE CHICAGO AS FOLLOWS:

Tour Y-1 Lv. Sat., June 17	Tour Y- 8 Lv. Thu., July 20	Tour Y-15 Lv. Sat., Aug. 12
Tour Y-2 Lv. Sat., June 24	Tour Y- 9 Lv. Sat., July 22	Tour Y-16 Lv. Thu., Aug. 17
Tour Y-3 Lv. Sat., July 1	Tour Y-10 Lv. Thu., July 27	Tour Y-17 Lv. Sat., Aug. 19
Tour Y-4 Lv. Thu., July 6	Tour Y-11 Lv. Sat., July 29	Tour Y-18 Lv. Thu., Aug. 24
Tour Y-5 Lv. Sat., July 8	Tour Y-12 Lv. Thu., Aug. 3	Tour Y-19 Lv. Sat., Aug. 26
Tour Y-6 Lv. Thu., July 13	Tour Y-13 Lv. Sat., Aug. 5	Tour Y-20 Lv. Thu., Aug. 31
Tour Y-7 Lv. Sat., July 15	Tour Y-14 Lv. Thu., Aug. 10	Tour Y-21 Lv. Sat., Sept. 2
		Tour Y-22 Lv. Sat., Sept. 9

DETAILED SCHEDULE

Lv Chicago	Sat. or Thu.	8.00 p.m.	C. & N. W. Ry.
Ar Omaha	1st day Sun. " Fri.	9.20 a.m.	"
Lv Omaha	1st day Sun. " Fri.	9.40 a.m.	U. P. System
Ar Ogden	2d day Mon. " Sat.	1.30 p.m.	"

IN OGDEN SEVEN HOURS—SIDE-TRIP TO OGDEN CANYON

Lv Ogden	2d day Mon. or Sat.	9.05 p.m.	U. P. System
Ar West Yellowstone	3d day Tues. " Sun.	7.30 a.m.	"

FIVE-DAY AUTOMOBILE TOUR OF YELLOWSTONE NATIONAL PARK

Lv West Yellowstone	3d day Tues. or Sun.	9.30 a.m.	Automobile
Stopping en route at Mammoth Potts and Great Fountain Geyser				
Ar Old Faithful	3d day Tues. or Sun.	11.55 noon	Automobile, 29 miles
Lv Old Faithful	4th day Wed. " Mon.	2.00 p.m.	"
Stopping en route at Thumb Paint Pots and Fishing Cone				
Ar Lake	4th day Wed. or Mon.	5.00 p.m.	" 35 "
Lv Lake	5th day Thu. " Tues.	10.00 a.m.	"
Stopping en route at Mud Geyser and Artist Point				
Ar Grand Canyon	5th day Thu. or Tues.	12.00 noon	" 20 "
Lv Grand Canyon	6th day Fri. " Wed.	1.15 p.m.	"
Stopping en route at Dunraven Pass and Tower Falls				
Ar Mammoth Hot Springs	6th day Fri. or Wed.	5.00 p.m.	" 40 "
Lv Mammoth Hot Springs	7th day Sat. " Thu.	1.30 p.m.	"
Stopping en route at Norris Geyser Basin				
Ar West Yellowstone	7th day Sat. or Thu.	5.04 p.m.	" 47 "
				Total 171 miles
Lv West Yellowstone	7th day Sat. or Thu.	7.00 p.m.	U. P. System
Ar Ogden	8th day Sun. " Fri.	6.10 a.m.	"
Lv Ogden	8th day Sun. " Fri.	6.20 a.m.	"
Ar Salt Lake City	8th day Sun. " Fri.	7.30 a.m.	"

IN SALT LAKE CITY ONE DAY—SIGHT-SEEING TOUR BY AUTOMOBILE— SIDE-TRIP TO SALT LAKE BEACH

Lv Salt Lake City	8th day Sun. or Fri.	5.15 p.m.	U. P. System
Ar Denver	9th day Mon. " Sat.	12.15 noon	U. P. System

THREE DAY AUTOMOBILE TOUR ROCKY MOUNTAIN NATIONAL PARK REGION

Lv Denver	9th day Mon. or Sat.	1.30 p.m.	Automobile
En route to Estes Park via the Big Thompson Canyon				
Ar Lewiston Chalet	9th day Mon. or Sat.	6.30 p.m.	Automobile, 87 miles
Afternoon of the 10th day leave Lewiston Chalet 2.00 p.m. for four-hour automobile ride including Longs Peak District, High Drive, Moraine Park and Beaver Flats				
Lv Lewiston Chalet	11th day Wed. " Mon.	8.00 a.m.	" 40 "
Via Fall River Road, Horseshoe Park and Milner Pass				
Ar Grand Lake Lodge	11th day Wed. or Mon.	1.30 p.m.	" 42 "
Lv Grand Lake Lodge	12th day Thu. " Tues.	8.30 a.m.	" 110 "
Ar Denver	12th day Thu. " Tues.	4.30 p.m.	Total 279 miles

IN DENVER AFTERNOON AND EVENING

Lv Denver	12th day Thu. or Tues.	11.30 p.m.	U. P. System
Ar Omaha	13th day Fri. " Wed.	5.30 p.m.	"
Lv Omaha	13th day Fri. " Wed.	6.00 p.m.	C. & N. W. Ry.
Ar Chicago	14th day Sat. " Thu.	7.25 a.m.	"

Cost of Complete 14 Days Tours

From Chicago, returning to Chicago

	Using Yellowstone Park Hotels	Using Yellowstone Park Camps
Total—Cost Rate, per person; one person occupying double lower berth.....	\$216.79	\$207.79
Total—Cost Rate, per person; one person occupying double upper berth.....	\$209.25	\$200.25
Total—Cost Rate, per person; two persons occupying one double lower berth.....	\$197.97	\$188.97

Compartment and drawing-room rates on application.

The above rates cover all round-trip railroad transportation, sleeping car accommodations as indicated for complete trip, all meals everywhere, automobile tour of and hotel or camp accommodations in Yellowstone National Park; automobile tour of and hotel accommodations in Rocky Mountain National Park; accommodations at hotels in Ogden, Salt Lake City, and Denver; transfer of passengers and checked baggage to and from city hotels, and the following side-trips:

Ogden Canyon ride and the famous mountain trout and chicken dinner.

In Salt Lake City, sight-seeing auto trip and 15-mile side-trip to Saltair Beach.

In Rocky Mountain National Park, a 4-hour automobile ride, including Longs Peak District, High Drive, Moraine Park and Beaver Flats.

Cost of Incomplete Tours

From and to points named

	Using Yellowstone Park Hotels	Using Yellowstone Park Camps
All tour privileges from Chicago to departure from Yellowstone Park (any entrance), with railroad ticket only for return to Chicago	\$135.43	\$126.43
All tour privileges from Chicago to arrival Ogden 9th day, with railroad ticket only for return to Chicago	\$139.18	\$130.18
All tour privileges from Chicago to departure Salt Lake City, with railroad ticket only for return to Chicago	\$143.58	\$134.58
All tour privileges from Chicago to arrival Denver 10th day, with railroad ticket only for return to Chicago	\$153.71	\$144.71
All tour privileges from Chicago to departure Denver 13th day, with railroad ticket only for return to Chicago	\$202.16	\$193.16
All tour privileges from Omaha, returning to Omaha	\$195.91	\$186.91

COLORADO SPRINGS EXTENSION

Lv Denver.....	13th day	Thurs. or Tues.	7.30 p.m.	C. & S. Ry.
Ar Colorado Springs.....	13th day	"	10.05 p.m.	"

Headquarters Antlers Hotel. Morning of 14th day Crystal Park auto drive. Afternoon—Pike's Peak via Cog Road.

Morning of 15th day Circle Drive.

Lv Colorado Springs.....	15th day	Sat. or Thurs.	6.45 p.m.	C. & S. Ry.
Ar Denver.....	15th day	"	9.15 p.m.	"

All tour privileges from Chicago to departure at Denver the fifteenth day, including two-day extension to Colorado Springs, covering Crystal Park, Pike's Peak and Circle Drive (including Cave of the Winds and Seven Falls), hotel accommodations, transfers, etc., with railroad ticket only between Denver and Chicago \$229.01

Arrangements for this extension must be made at time of booking.

The above rates are on basis of one person occupying double lower berth. Rates for other Pullman accommodations on application.

Rates from other cities, and rates for other incomplete tours for passengers traveling to Pacific Northwest, California, etc., on application.

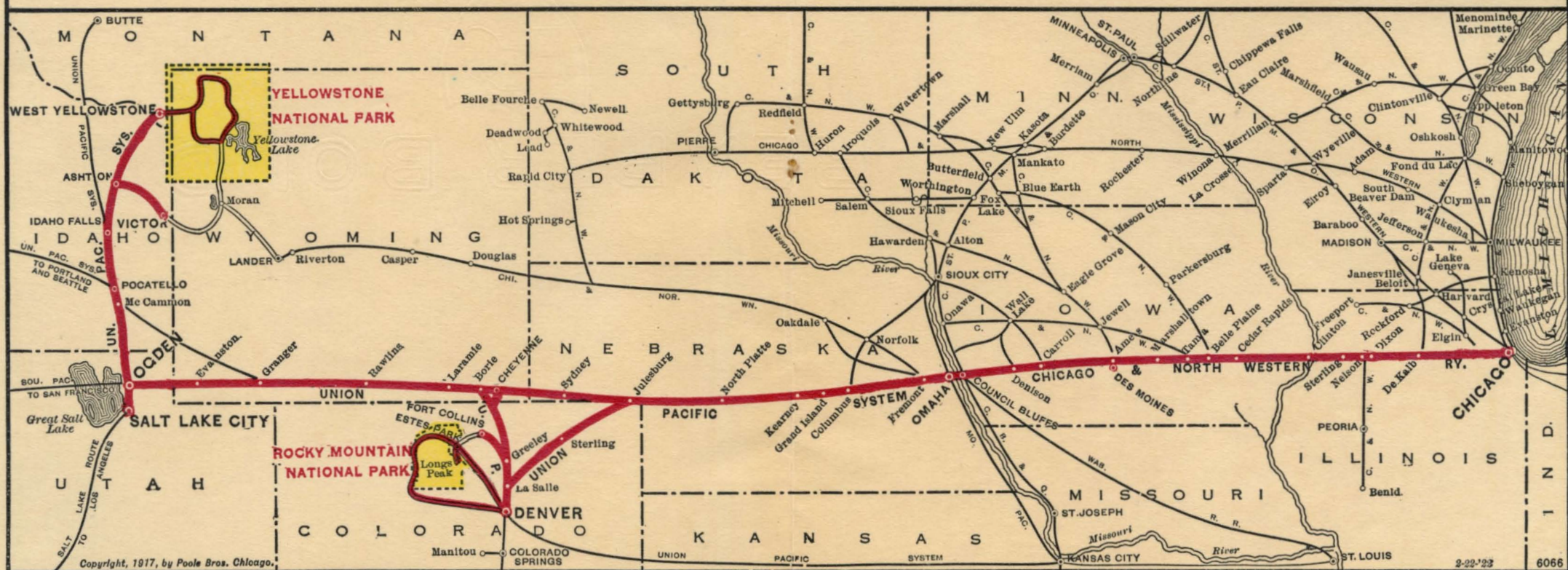
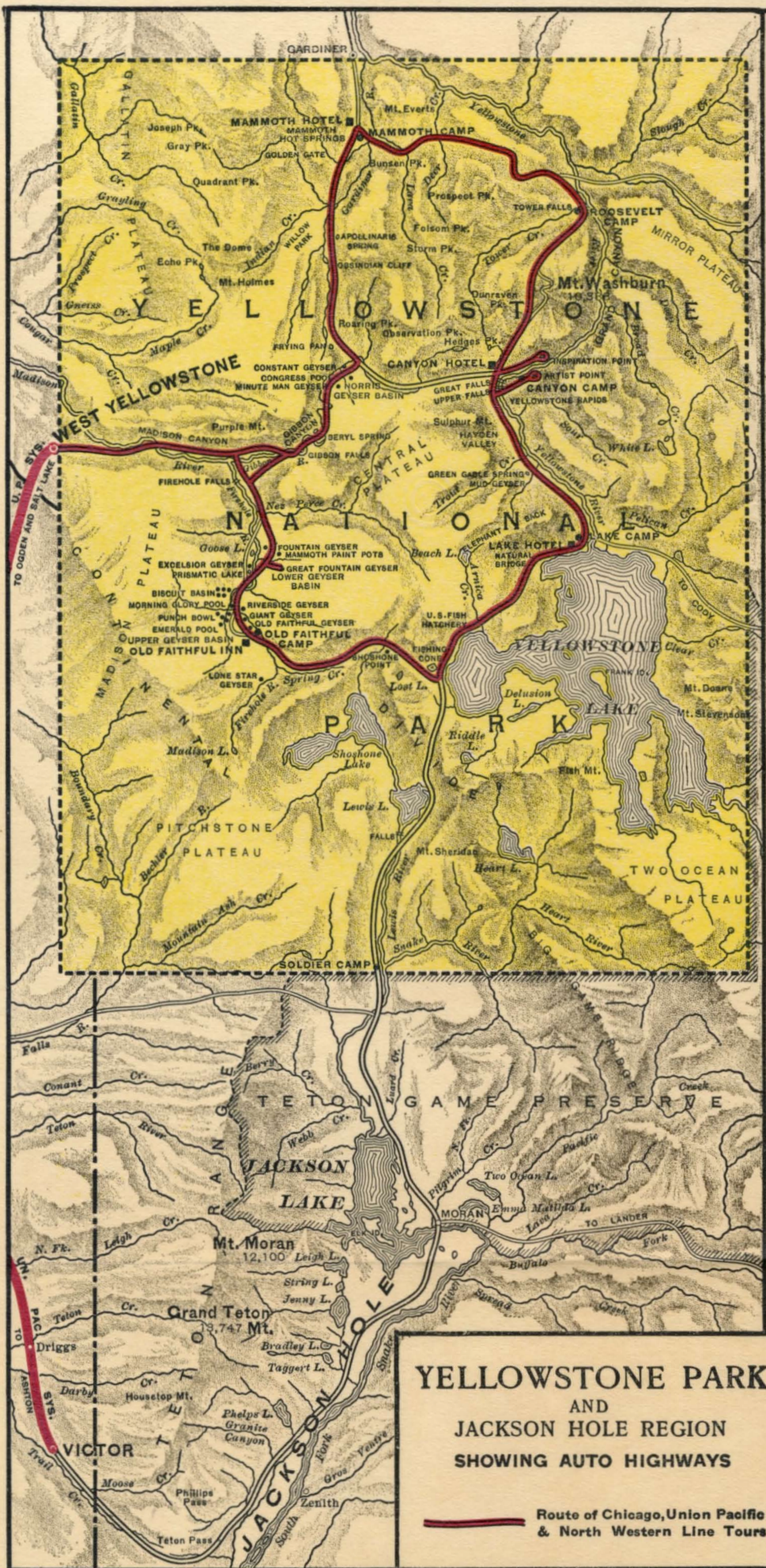
“North Western-Union Pacific Tours”



Old Faithful Inn, Yellowstone Park
Canyon Hotel, Yellowstone Park
Lewiston Chalet, Rocky Mountain Park

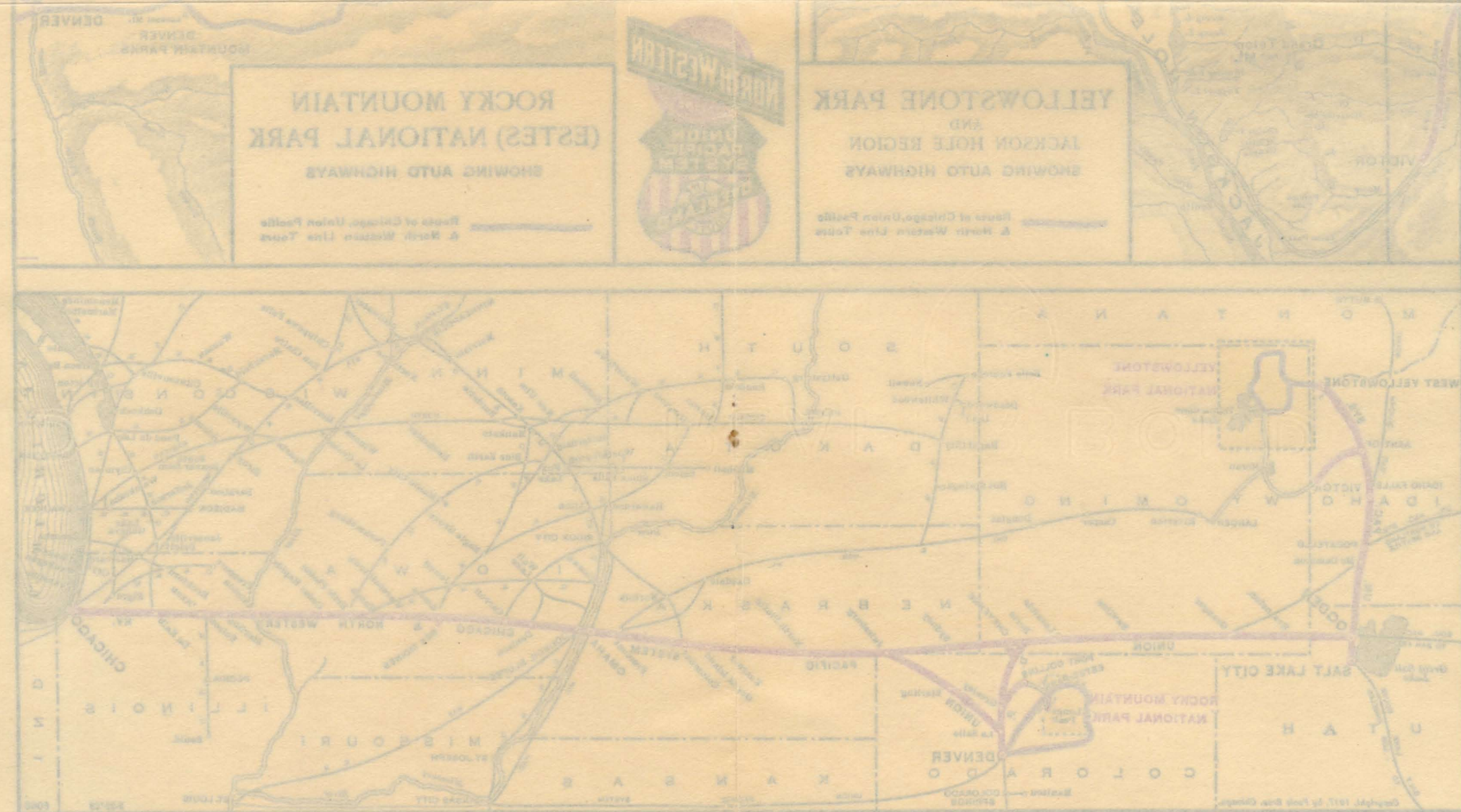
Lake Hotel, Yellowstone Park
Grand Lake Lodge, Rocky Mountain Park

Routes of our Escorted Tours



Chicago, Union Pacific & North Western Line to Yellowstone Park and Rocky Mountain(Estes) National Park

Routes of our Escorted Tours



Chicago, Union Pacific & North Western Line to Yellowstone Park and Rocky Mountain (Estes) National Park

“Two National Parks in Two Weeks”



Minerva Terrace—one of the many terraces of Mammoth Hot Springs



Take your camera to Yellowstone and bring home pictures like this of the bears and other wild animals

"North Western-Union Pacific Tours"



Yellowstone Falls. This picture and the next show that our parties see "the best of the West"

WHY YOU SHOULD JOIN OUR TOURS

Our At-Actual-Cost Tour Service offers you the great advantage of knowing at the outset the exact total cost of your trip. You are relieved of the anxieties and troubles of the independent traveler, all the details connected with your trip are arranged in advance and are carefully carried out by our representative with the party. You are, in fact, more independent in a real sense than the so-called independent traveler, as you are entirely free to enjoy to the fullest extent the pleasures of your trip.

PERSONAL ESCORT

Our Tours are always under the charge of a courteous and experienced representative of the Bureau of Service National Parks and Resorts, who accompanies the party during the entire trip and who devotes his attention to the comfort and welfare of our passengers, relieving the individual of the usual travel cares.

FOR WOMEN TRAVELING WITHOUT ESCORT

If a woman be deterred from travel because she must travel alone, our Escorted Tours offer an opportunity to bridge this difficulty and enjoy the trip of a lifetime. Our Travel Representative will introduce her to the other members of our special train party, look after her tickets, transfers, etc., and insure her against vexation and annoyance. Hundreds of women, as individuals, have joined our Tours. The arrangement offers an opportunity for a business man to send his wife, mother, sister, or daughter on a safe, two weeks' vacation amid congenial surroundings.

HOW TO JOIN OUR TOURS

Persons desiring to join one of our Tours should send their names to be registered as early as possible, stating Pullman space required. Reservations will then be made and held

"Two National Parks in Two Weeks"



The Fall River Drive, Rocky Mountain National Park, one of the new motor roads traveled by our tours

until remittance reaches our office, when Tour tickets will be issued. Remittance should be made not later than seven days before departure of Tour, but when this is inconvenient, we will, upon request, hold reservations longer. Persons prevented from going, may secure refund in full, provided reservations be cancelled before 1.00 p.m. on date of Tour departure.

Be sure when purchasing railroad transportation that it reads in both directions via Chicago & North Western Railway between Chicago and Omaha, and via Union Pacific System between Omaha and West Yellowstone, Mont., also that coupons for Yellowstone Park Transportation Company and hotels or camp accommodations in Yellowstone National Park are included.

Address all communications to C. J. Collins, Manager, 148 South Clark St., Chicago, Ill., or telephone Dearborn 2323.

SERVICE BY CORRESPONDENCE

With an intelligent understanding of the problems confronting the average person who wishes to secure the greatest benefits of a western vacation trip, the Bureau of Service National Parks and Resorts is prepared to give satisfactory service to persons making inquiry by mail. Please feel free to write fully and do not hesitate to ask any question in connection with your journey. Our service makes travel easy, enjoyable and provides for the utmost in sight-seeing and recreation within the scope of your trip.

OUR REPRESENTATIVE WILL CALL ON YOU

A representative of the Bureau of Service National Parks and Resorts will call on you, if you so desire, for the purpose of giving you all the information you require regarding our Tours. He is courteous, well informed, and a thorough "Travel Expert."

"North Western-Union Pacific Tours"



Bureau of Service National Parks and Resorts Tour Party at Sheep Lake on the Fall River Road in Rocky Mountain National Park, Colorado

PURCHASE RAILROAD TICKETS AT YOUR HOME STATION

Persons residing elsewhere than Chicago may join our Tours at Chicago or any regular stopping point en route. While all Tours start from Chicago and tickets may be purchased at our office there, passengers starting from other points should purchase railroad tickets from agent at their home station including the regular tour through Yellowstone National Park via Yellowstone Park Transportation Co., and Hotel or Camp accommodations. Through tickets usually effect a saving in railroad fare; moreover, they include free transfer at Chicago if reading through that city, and enable passengers to check baggage through to West Yellowstone, Mont., thus avoiding expense and trouble at Chicago.

Complete advice concerning all ticketing arrangements will be given at time reservations are requested—in person or by mail.

INFORMATION FOR TICKET AGENTS

In ticketing passengers who wish to join our Tours, sell Summer Excursion tickets to West Yellowstone, Mont., routed in both directions via Chicago & North Western Ry. between Chicago and Omaha, and via Union Pacific System between Omaha and West Yellowstone.

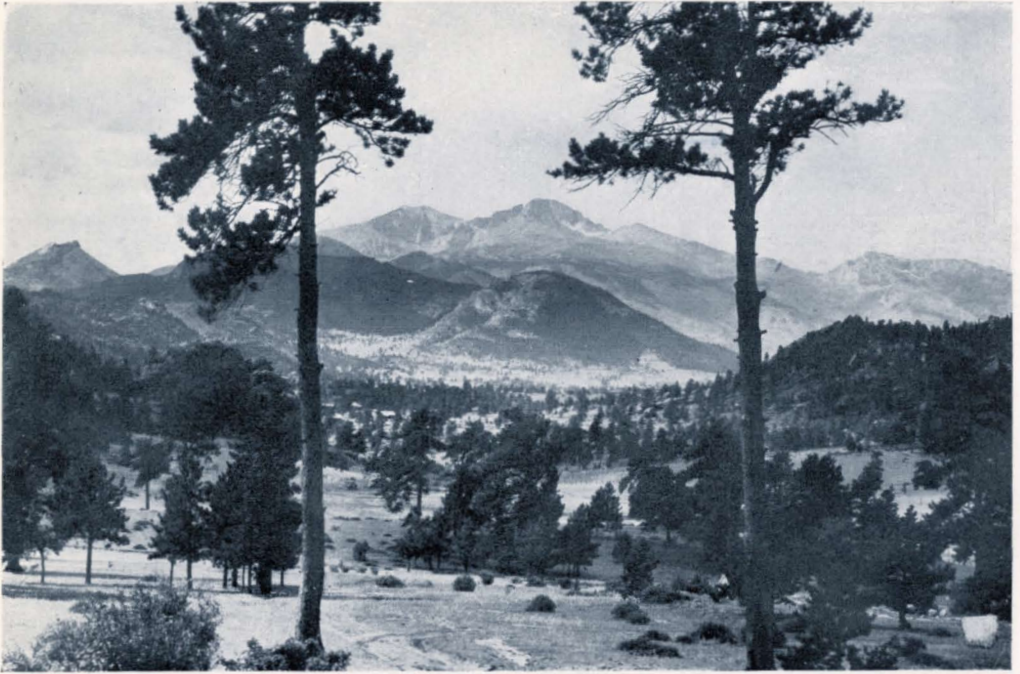
Coupons should be attached for one of the complete five-day tours in Yellowstone National Park, as follows:

For the Hotel and Automobile Tour, including automobile transportation and hotel accommodations; Rate \$54.00 higher than the fare to West Yellowstone, Mont., (proportion accruing to the Yellowstone Park Transportation Company \$25.00; to the Yellowstone Park Hotel Company, \$29.00.)

For the Camping and Automobile Tour, including automobile transportation and camping accommodations; Rate \$45.00 higher than the fare to West Yellowstone, Mont., (Proportion accruing to the Yellowstone Park Transportation Company, \$25.00; to the Yellowstone Park Camping Company, \$20.00.)

Remittance for other tour privileges, including sleeping car accommodations beginning and ending at Chicago, should be made by passengers direct to C. J. Collins, 148 S. Clark Street, Chicago, Ill.

"Two National Parks in Two Weeks"



Longs Peak—Altitude 14,256 feet
Rocky Mountain National Park

INCOMPLETE TOURS—DIFFERENT RETURN ROUTES

Passengers who wish to leave our Tours at points en route may do so by announcing such intention at time of booking and charges will be adjusted accordingly. On page eleven will be found rates covering certain incomplete tours. Passengers wishing to extend their journeys to the Pacific Coast and to enjoy the advantages of our Escorted Tours through the National Parks are invited to apply for further information.

STOP-OVER PRIVILEGES

Railroad tickets are good to reach original starting point not later than October 31, 1922. Stop-overs may be had at all points en route. By making such arrangements at time of booking, passengers may leave a Tour at any stopping point en route and join any subsequent Tour for the completion of itinerary, or they may travel independently from stop-over point.

VARIETIES OF SLEEPING CAR ACCOMMODATIONS

The rates from Chicago for the Complete Escorted Tours "Y-1" to "Y-22" inclusive, shown on page eleven, cover the different assignments of lower and upper berths.

Drawing-rooms and compartments may be had at greater cost. These rooms are always in demand and should be reserved as far in advance as possible. Information as to cost upon application.

BAGGAGE ARRANGEMENTS

Unnecessary baggage is always a nuisance. Most persons agree that a roomy suitcase will hold everything essential for a comfortable trip through the National Parks. The free baggage allowance on the railroads is 150 pounds per adult passenger and on the automobile in the National Parks twenty-five pounds of hand baggage is carried free. Passengers who may have a trunk or other baggage to be checked should have their baggage checked at their home station to West Yellowstone, Mont., via Chicago & North Western Ry. and Union Pacific System. Trunks will be stored without cost at West Yellowstone while

"North Western-Union Pacific Tours"



Members of our Escorted Tours are served en route in dining cars

passengers are making the Park trip, and at Denver, while passengers are in Rocky Mountain National Park.

The Bureau of Service accepts no responsibility in connection with the service of any train, automobile or other conveyance which is used either wholly or in part in the execution of our tours, and we assume no responsibility for delay, accident or loss to person or property, or for additional expense due to storm, delay or other causes beyond our control. We assume no responsibility for baggage, but in the event of damage, delay or loss, we will do all in our reasonable power to lessen the hardship incurred.

Our escort will furnish you with special baggage tags, bearing your name and address, upon departure from Chicago. These tags should be attached to all baggage.

OUR DINING CAR SERVICE

In our spacious dining cars, the delicacies and substantial ~~of~~ the season are served in an efficient and skillful manner. All dining cars are equipped with electric lights and electric fans. A ventilating device in the kitchen removes all odors of cooking.

MAIL AND TELEGRAMS

Mail and telegrams addressed to members of the Tours "Y-1" to "Y-22" inclusive, should be forwarded as shown below, being particular to specify, "Member of North Western-Union Pacific Tour No. Y—."

West Yellowstone, Mont., care Ticket Agent, Union Pacific System.

Salt Lake City, Utah, care Hotel Utah.

Denver, Colo., care Albany Hotel.

WEARING APPAREL

Because of the altitudes in the National Parks, cool weather is experienced, especially after sundown. You should take along fall weight clothing and a medium weight overcoat or sweater. A linen duster and a pair of colored glasses will prove invaluable while motor-ing; heavy, thick soled shoes are a convenience.

Extensions and Side Trips



A section of Denver's business district
Rocky Mountain Range in distance

NOTE

Rates and train schedules quoted herein are subject to such change as tariff or operating requirements, which cannot be foreseen at time of issuance of this publication, may later demand.

COLORADO SPRINGS, MANITOU, AND THE PIKE'S PEAK REGION

Passengers desiring to extend their trip to include the Pike's Peak Region may make side-trip from Denver to Colorado Springs and return. (See page eleven.)

Colorado Springs, termed "The City of Sunshine," and Manitou, located immediately adjacent, are in the center of a great group of natural wonders, affording an opportunity for enjoying delightful outings which are immediately at hand. There are 250 mountain trails accessible from Colorado Springs and Manitou. Numerous scenic automobile rides can be planned. Among the most interesting points to be visited are Pike's Peak, Crystal Park, Garden of the Gods, Stratton Park, South Cheyenne Canyon and Seven Falls, Cave of the Winds, Mount Manitou and Cripple Creek.

HAWAII—THE PARADISE OF THE PACIFIC

The Hawaiian Islands comprise a land of exquisite charm in a novel setting. They are reached by an interesting ocean voyage of more than 2,000 miles from San Francisco to Honolulu. The Hawaiian National Park includes three celebrated volcanos—Haleakala, Mauna Loa, and the continuously active Kilauea, with its lake of molten lava and fire. The beautiful parks of Honolulu, with their royal palms, gorgeous tropical flowers and strange trees and shrubs, suggest a fairyland to the visitor unaccustomed to such scenes. Every year, in February, Hawaii puts on gala dress and invites the world to join in what has come to be known as the Mid-Pacific Carnival, many features of which are staged at Waikiki Beach.

Individual itineraries for extension tours to the Hawaiian Islands will be prepared upon application, without charge.

Extensions and Side Trips



Multnomah Falls
Columbia River Gorge



Mount Rainier and Paradise Inn
Mount Rainier National Park

THE PACIFIC NORTHWEST is a region of beautiful mountains, charming waterfalls, broad rivers, and fruitful valleys. How vast it is, how magnificent its scenery, how incomparable its resources, how wide the horizon of its future is beyond the untraveled conception of not a few Americans.

PORTLAND AND THE COLUMBIA RIVER GORGE. Portland and its surroundings offer to the visitor an infinite variety of attractions, ranging from snow-covered mountains in their primitive ruggedness to the calm of garden-like valleys. Of Portland's many distinctive characteristics, it takes special pride in its roses and the splendid natural scenery to be found within a short distance of the heart of the city. The Columbia River Highway, between Hood River and Portland shares with Union Pacific System the honors of the world's greatest scenic thoroughfare. This smooth pathway through the Cascade Mountains is 200 miles long.

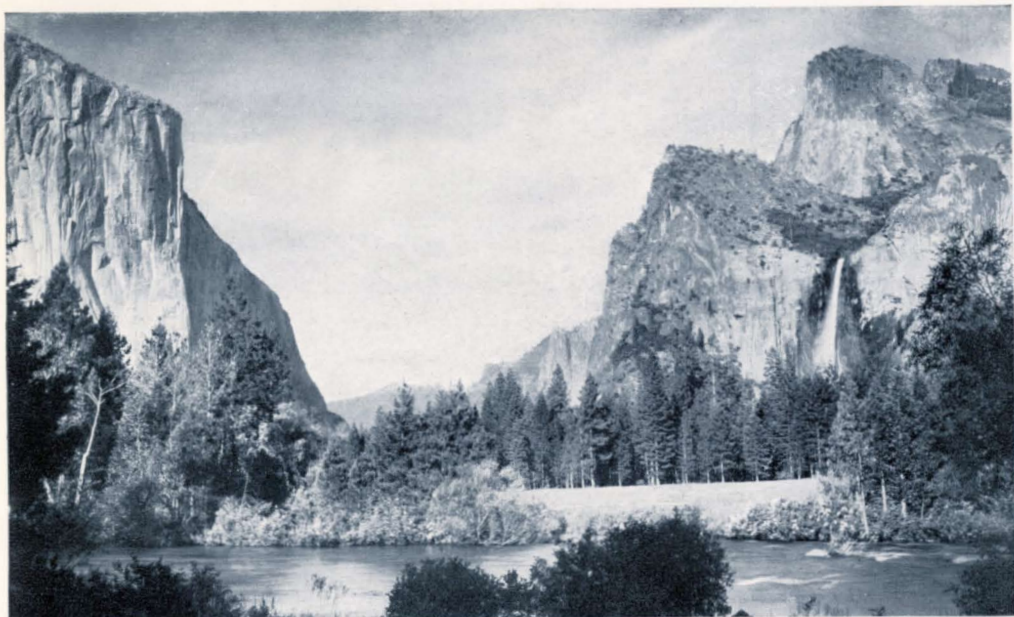
MOUNT RAINIER NATIONAL PARK. Mount Rainier has a glacier system far exceeding in size and impressive beauty that of any other in the United States. From its snow-covered summit twenty-eight rivers of ice pour slowly down its sides to the rich gardens of wild flowers and splendid forests below. No glacier of large size in the world is so quickly, easily, and comfortably reached as the most striking and celebrated Nisqually Glacier. Thousands of Americans in normal times go to Switzerland to see glaciers much harder to reach and far less satisfactory to study.

THE PUGET SOUND COUNTRY of waters and forests and mountains is a region where, the summer through, every day is a "day in June." Recreation spots of great beauty abound. The leading cities, Seattle and Tacoma, rank in commercial importance and civic pride with the big cities of the nation and possess that peculiar type of frontier vigor which keeps them fully abreast of the great march of progress.

ALASKA. Summer excursion steamers run from Seattle, Puget Sound terminus of Union Pacific System, through the land-locked "inside" passage to the wonderland of the far North. Alaska, land of the mid-night sun and the northern lights, has in its scenic grandeur an asset which to the traveler is far more appealing than its gold mines, fur, and fisheries, and what will surprise many is its beautiful summer weather and bright sunshine, the wild flowers, and almost tropical verdure.

Individual itineraries for extension tours to the Pacific Northwest and Alaska will be prepared upon application, without charge.

Extensions and Side Trips



A glimpse of Yosemite Valley
Main entrance to Yosemite National Park

THE NATIONAL PARKS OF CALIFORNIA

YOSEMITE NATIONAL PARK. The first view of most spots of celebrity often fall short of expectation, but this is never true of Yosemite Valley. The immensity of the precipices on either side of the peaceful floor; the loftiness and romantic suggestion of the numerous waterfalls; the majesty of the granite walls and the unreal, almost fairy quality of the ever-varying whole cannot be successfully foretold. This world-famous incomparable valley is merely a crack seven miles long in a scenic masterpiece of 1,100 square miles! A few miles away is the Mariposa Grove of Big Trees. Above the north rim of the valley the Tioga Road crosses the Park and connects, to the east of the Sierra Nevada Range, with the highway extending to Lake Tahoe. In season regular auto stage service is maintained between Lake Tahoe and Yosemite Valley, affording Overland Route passengers the most beautiful and varied automobile detour.

SEQUOIA NATIONAL PARK, within an area of 237 square miles, contains several large groves of the celebrated *Sequoia Washingtoniana*, popularly known and rightly celebrated as the Big Tree of California. The Park contains 1,000,000 Sequoia trees, 12,000 of which exceed ten feet in diameter. The General Sherman tree, patriarch of all, is 279.9 feet high with a diameter of 36.5 feet. It is the biggest and the oldest living thing.

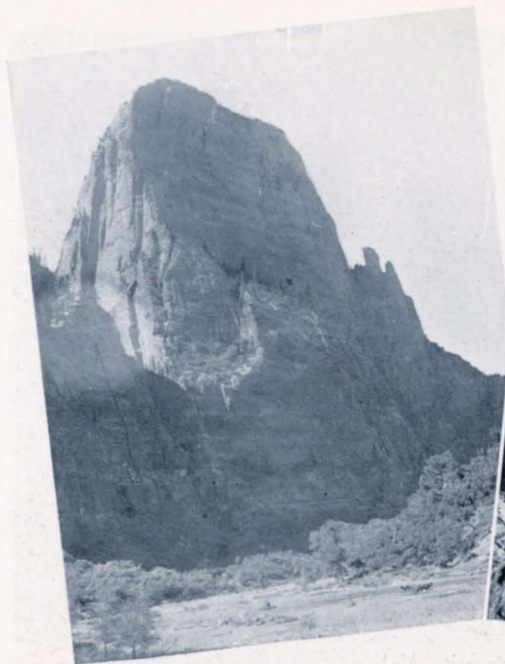
GENERAL GRANT NATIONAL PARK was created to preserve the General Grant tree—height 264 feet, diameter 35 feet—and its splendid group of fellows, including the George Washington tree, which is only nine feet less in height and six feet less in diameter. The grove is luxuriant in all growing things.

PROPOSED ROOSEVELT NATIONAL PARK is designed to include not only the Sequoia National Park, but also a large area of supreme scenic magnificence embracing the Kings River Canyon, Canyon of the Kern, the High Sierra to the eastward, and the giant peaks culminating in Mount Whitney, whose elevation of 14,501 feet is the loftiest in the United States.

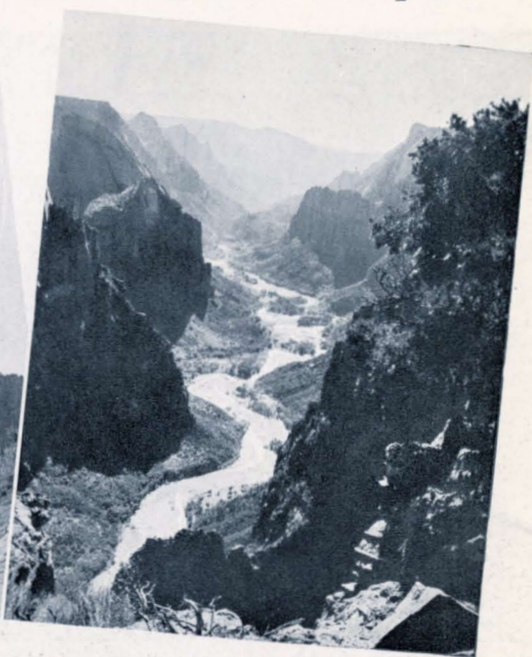
LASSEN VOLCANIC NATIONAL PARK embraces the only active volcano in continental United States. It is situated in Northern California midst a region of extraordinary interest, but as yet little developed for the accommodation of visitors.

Individual itineraries for extension tours to the principal cities and resort regions of California will be prepared upon application, without charge.

Extensions and Side Trips



The Great White Throne



A glorious vista of Zion Canyon

Zion National Park

THE NEW ZION NATIONAL PARK

"With the creation of the Zion National Park on November 19, 1919, there entered into our national park system a reservation as remarkable, as brilliantly beautiful, and as highly differentiated from all others as any of the distinguished group. It contains 120 square miles of the painted terrace country of Southern Utah, surrounding from its source a shallow river whose carved and fretted and monumented canyon lies between sandstone walls which rise 2,000 feet in gorgeous mottled reds surmounted by 1,000 feet in marble-white. This canyon, winding like a snake, abounding in enormous peaks and domes, and glowing like a Roman sash, is one of the most striking spectacles which even America has to offer."—From report of Robert Sterling Yard, Executive Secretary, The National Parks Association.

Zion National Park is reached from Salt Lake City and Los Angeles by the Union Pacific System to Lund, Utah, thence by motor stage an even hundred scenic miles. Toward the end of the journey the route enters "Dixie," a horticultural paradise, and then ascends the Valley of the Virgin, brilliant with most of the reds and yellows of the palette. During the Park season, May 15th to October 15th, there is motor stage service between Lund and the Park, where Wylie Camp provides accommodations for visitors. The north rim of the Grand Canyon of the Colorado, in Arizona, may be reached by auto side-trip from Zion National Park, a distance of 175 miles. For four or more passengers, automobile will leave Lund for trip to the Grand Canyon and return at per capita rate of \$125.00, which includes transportation, meals and lodging for eight days. A Wylie Camp is operated at Grand Canyon.

Rates: The cost of the three-day Zion National Park tour from Lund, including automobile transportation to the Park and return, lunch at Cedar City in each direction, two nights' lodgings and five meals at Wylie Camp is \$36.50. For additional time at Wylie Camp the rate is \$4.75 per day, American plan.

Individual itineraries for extension tours to Zion National Park will be prepared upon application, without charge.

Extensions and Side Trips



Jackson Lake and the Tetons, new southern entrance to Yellowstone Park. Supreme in scenic splendor

JACKSON HOLE REGION

Yellowstone is to have a new entrance—one from the south. Stephen T. Mather, Director, National Park Service, Department of the Interior, says, "It is my hope that the new southern entrance will be open for regular tourist travel by next season. This gateway will afford an unsurpassed opportunity to view the Teton Mountains, Jackson Lake, and other distinguished features of Jackson Hole." This new gateway will be reached in connection with train service via the Oregon Short Line (Union Pacific System) to Victor, Idaho, the rail terminus of the new way to the Park. (See map.) From Victor the route is via automobile east through Teton Pass and thence north through Jackson Hole to the southern boundary of Yellowstone. The distance from Victor to the south park entrance is about eighty miles.

The annexation of Jackson Hole will double the scenic value of Yellowstone. Jackson Hole is the setting for the most magnificent lake and mountain picture in the world. The silver and cerulean foreground is Jackson Lake, 12 miles long and 4 miles wide. Out of the blue rises the sombre green of the pine-clad lower slopes of Mt. Moran and the Grand Teton, each almost 14,000 feet high. Above the timber-line are the great white glaciers whose icy drips feed the lakes, and above the glaciers, and often above the clouds, rises the serrated purple summit of the Teton. Truly, this is the noblest mountain in the Rockies. To one who desires to forsake the usual and get into the wildest part of the West, the call of the Jackson Lake region is irresistible. There are launches on the lake and the cut-throat trout average four pounds. In the autumn hunting parties go out for elk, deer mountain sheep, and moose.

Jackson Lake is reached by automobile either from Victor, Idaho, or Ashton, Idaho, on the Oregon Short Line (Union Pacific System) or from Yellowstone Park. (See map.) The resort on Jackson Lake is Teton Lodge ("Sheffield's") at Moran, Wyo. South of the lake are other ranches where travelers are accommodated.

Individual itineraries for extension tours to Jackson Hole will be prepared upon application, without charge.

Twenty-three

TOURS AND TICKETS EVERYWHERE

The functions of our Bureau are manifold. We prepare and furnish, without charge, schedules and routings for societies, clubs, fraternities, and organizations who desire special-car or special-train trips to any part of the West.

We will gladly supply information and literature on Colorado, Utah, California, the Pacific Northwest, Alaska, Hawaii and all the National Parks.

If you are planning to travel independently, or to organize a party please call on any of our listed representatives to assist you. A letter addressed to C. J. Collins, Manager, 148 South Clark Street, Chicago, Illinois, will receive immediate and careful attention. Telephone Dearborn 2323.



ESCORTED TOURS

“TWO NATIONAL PARKS IN TWO WEEKS”

ARE CONDUCTED BY

BUREAU OF SERVICE NATIONAL PARKS AND RESORTS

CHICAGO & NORTH WESTERN—UNION PACIFIC

ADDRESS ALL COMMUNICATIONS TO

C. J. COLLINS, Manager

148 S. Clark Street, Chicago, Ill. (Telephone Dearborn 2323)

REPRESENTATIVES

CHICAGO, ILL. - - - 148 S. Clark St. - - Tel. Dearborn 2323	{ C. E. Burgess, Chicago Representative H. B. Northcott, Traveling Agent Jos. Muller, Passenger Agent
LOS ANGELES, CAL. - 417 Central Bldg. - - Tel. 12968 - - -	
CINCINNATI, OHIO - 45 Ingalls Bldg. - - - Tel. Main 3999 - -	
CLEVELAND, OHIO - 608 Sweetland Bldg. - - Tel. Prospect 2456	{ C. B. Johnson, California Representative C. M. Rollings, Traveling Agent C. E. Frain, Traveling Agent
DETROIT, MICH. - - 621 Free Press Bldg. - Tel. Main 7260 - -	
INDIANAPOLIS, IND., 308 Merchants Bank Bldg., Tel. Main 5016,	
PITTSBURGH - 6047 Jenkins Arcade Bldg. - Tel. Smithfield 632	{ C. A. Stoddard, Traveling Agent V. J. Schmittroth, Traveling Agent

TICKET AND INFORMATION OFFICES

CHICAGO & NORTH WESTERN LINE

BOONE, IA.—M. J. Golden, Division Freight & Pass'r Agent.
 BOSTON, MASS.—416 Old South Bldg., 294 Washington St.
 J. H. Schultz, General Agent.
 C. W. Gray, Traveling Agent.
 M. G. Gundersen, Traveling Agent.
 T. A. Daly, City Agent.
 CHICAGO, ILL.—148 S. Clark Street.
 H. G. Van Winkle, General Agent.
 E. D. Parmelee, City Agent.
 N. M. Kean, City Agent.
 E. E. Bogardus, City Agent.
 226 W. Jackson Street.
 J. P. Williams, Division Freight & Passenger Agent.
 P. D. Stokes, Traveling Agent.
 Madison Street Terminal, Canal and Madison Sts.
 N. A. Herseither, Passenger & Ticket Agent.
 CINCINNATI, OHIO—45 Ingalls Bldg., 4 E. 4th Street.
 J. L. Burgar, General Agent.
 A. M. Linz, Traveling Agent.
 F. A. Haas, Traveling Agent.
 A. G. Tetlow, Traveling Agent.
 C. P. Humphreys, City Agent.
 CLEVELAND, OHIO—609 Sweetland Bldg., 1010 Euclid Ave.
 H. E. Saumbly, General Agent.
 R. V. Dull, Traveling Agent.
 A. C. Lewis, Traveling Agent.
 W. W. Pontious, City Agent.
 DES MOINES, IA.—216 United Bank Bldg., Seventh St. and Grand Ave.
 V. A. Hampton, General Agent.
 C. A. Wingett, City Agent.
 DETROIT, MICH.—621 Free Press Bldg., 127 LaFayette Ave.
 A. E. Ladwig, General Agent.
 W. L. Stannard, Traveling Agent.
 W. F. Schlicht, Traveling Agent.
 C. W. Bloom, City Agent.
 GREEN BAY, WIS.—H. C. Cheyney, Div. Frt. & Pass'r Agent.
 INDIANAPOLIS, IND.—308 Merchants Bank Bldg., 11 S. Meridian Street.
 R. O. Small, General Agent.
 W. F. Winkrantz, Traveling Agent.
 G. H. Dumas, Traveling Agent.
 MADISON, WIS.—A. W. Bower, Div. Frt. & Pass'r Agent.
 H. B. Loucks, Traveling Agent.
 A. L. Fisher, Traveling Agent.
 MILWAUKEE, WIS.—99 Wisconsin Street.
 Chas. Thompson, General Agent.
 E. P. Rueter, City Agent.
 C. H. Hoffmeister, City Agent.
 MINNEAPOLIS, MINN.—528 Second Ave. So. (Cor. Sixth St.)
 F. A. Brown, General Agent Passenger Dept.
 G. H. Feyder, City Ticket Agent.
 NEW YORK, N. Y.—403 Stewart Bldg., 280 Broadway.
 F. G. Fitz-Patrick, General Agent.
 S. A. Trussell, Traveling Agent.
 W. E. Scott, Traveling Agent.
 R. H. Miller, Traveling Agent.
 W. G. Babel, City Agent.
 Wm. Platt, City Agent.
 PEORIA, ILL.—213 Jefferson Bldg., 200-08 S. Jefferson St.
 F. B. Martin, General Agent.
 R. E. Williams, Traveling Agent.
 PHILADELPHIA, PA.—544 Widener Bldg., 1335 Chestnut St.
 D. M. Davis, General Agent.
 E. T. Gerding, Traveling Agent.
 T. J. Coen, Traveling Agent.
 C. N. Hale, Traveling Agent.
 J. F. Swartout, City Agent.
 PITTSBURGH, PA.—6047 Jenkins Arcade Bldg., 5th and Liberty Aves.
 J. J. Livingston, General Agent.
 E. W. Fiala, Traveling Agent.
 R. W. Phelps, Traveling Agent.
 D. C. Gordon, City Agent.
 ST. LOUIS, MO.—205 Boatmen's Bank Bldg., 314 N. Broadway.
 H. L. Hammill, General Agent.
 H. A. Hancock, Traveling Agent.
 C. S. Evenson, Traveling Agent.
 R. O. Harrison, City Agent.
 ST. PAUL, MINN.—80 E. Fifth St. (Cor. Minnesota St.)
 W. L. Mansfield, General Agent Passenger Dept.
 G. F. Mathes, City Ticket Agent.
 SIOUX CITY, IA.—518 Nebraska St.
 M. M. Betzner, General Agent.
 TORONTO, ONT.—301 Colonial Building, 9 King St. West.
 G. S. Donaldson, General Agent.
 W. W. Creighton, Traveling Agent.
 WINONA, MINN.—H. J. Wagen, Div. Frt. & Pass'r Agent.

C. A. Cairns,
 Passenger Traffic Manager,
 Chicago, Ill.

A. R. Gould,
 Asst. Passenger Traffic Manager,
 Chicago, Ill.

Jno. L. Ferguson,
 Gen'l Passenger Agent,
 Chicago, Ill.

Chicago & North Western Ry.

UNION PACIFIC SYSTEM

ATLANTA, GA.—1232 Healey Bldg., 49 N. Forsyth Street.
 W. C. Elgin, General Agent.
 G. J. Garmon, Traveling Frt. & Pass'r Agent.
 P. S. Smith, Traveling Freight & Pass'r Agent.
 BIRMINGHAM, ALA.—742 Brown-Marx Bldg., 1st Ave. and 20th Street.
 J. H. Doughty, General Agent.
 W. B. Markham, Traveling Frt. & Pass'r Agent.
 BOSTON, MASS.—207-08 Old South Bldg., 294 Washington St.
 Willard Massey, General Agent.
 T. C. Wallace, Traveling Frt. & Pass'r Agent.
 Geo. M. Shirley, Traveling Frt. & Pass'r Agent.
 Jas. Cunningham, City Passenger Agent.
 Jas. M. Thompson, Freight and Passenger Agent.
 CHICAGO, ILL.—1421 Garland Bldg., 58 E. Washington St.
 Geo. R. Bierman, General Agent Passenger Dept.
 W. G. Carmichael, Traveling Passenger Agent.
 G. R. Lemmer, City Passenger Agent.
 William Warner, City Passenger Agent.
 CINCINNATI, OHIO—704 Union Central Bldg., 4th and Vine Sts.
 W. H. Connor, General Agent.
 J. Stanley Orr, District Passenger Agent.
 A. D. Hart, City Passenger Agent.
 F. B. Swope, Traveling Freight & Passenger Agent.
 J. J. Klenke, Traveling Freight & Passenger Agent.
 F. G. Busch, Traveling Freight & Passenger Agent.
 CLEVELAND, OHIO—1204 Sweetland Bldg., 1016 Euclid Ave.
 W. H. Benham, General Agent.
 J. L. Balmer, Traveling Freight & Passenger Agent.
 Edwin A. Allen, Traveling Freight & Passenger Agent.
 Arthur C. Schier, Traveling Agent.
 DES MOINES, IA.—606-07 Polk Bldg., 209 Fifth St.
 D. M. Shrenk, General Agent.
 L. G. Meder, Traveling Passenger Agent.
 DETROIT, MICH.—507 Free Press Bldg., 127 LaFayette Ave.
 A. R. Malcolm, General Agent.
 J. G. Howe, Traveling Frt. & Pass'r Agent.
 J. E. Kennedy, Traveling Frt. & Pass'r Agent.
 T. J. Kay, City Passenger Agent.
 LINCOLN, NEB.—Lincoln Chamber of Commerce Bldg., 204 N. 11th Street.
 A. D. Grant, General Agent.
 MILWAUKEE, WIS.—1215 Majestic Bldg., 221 Grand Ave.
 E. G. Clay, General Agent.
 G. J. Buckingham, Traveling Pass'r Agent.
 MINNEAPOLIS, MINN.—618 Metropolitan Life Bldg., 125 S. Third St.
 E. H. Hawley, General Agent.
 R. E. Drummy, Traveling Freight & Pass'r Agent.
 Wm. H. Brennan, Traveling Frt. & Pass'r Agent.
 NEW ORLEANS, LA.—1001 Carondelet Bldg., 226 Carondelet St.
 D. M. Rea, General Agent.
 G. A. Fischer, Traveling Freight & Pass'r Agent.
 NEW YORK, N. Y.—309-10 Stewart Bldg., 280 Broadway.
 J. B. DeFriest, General Agent.
 I. W. Carter, District Passenger Agent.
 D. C. Fisk, Jr., Traveling Freight & Pass'r Agent.
 D. M. Monro, Traveling Freight & Passenger Agent.
 C. E. Andrews, Traveling Freight & Passenger Agent.
 H. L. Gardner, City Passenger Agent.
 C. B. Hanna, City Passenger Agent.
 Wm. J. Campbell, Passenger Agent.
 OMAHA, NEB.—1416 Dodge St.
 A. K. Curtis, City Passenger Agent.
 F. E. Watkins, Traveling Passenger Agent.
 E. C. Mallon, Traveling Passenger Agent.
 PHILADELPHIA, PA.—508 Commercial Trust Bldg., 15th and Market Sts.
 F. L. Feakins, General Agent.
 S. C. Milbourne, Assistant General Agent.
 S. A. Tubman, Traveling Freight & Pass'r Agent.
 Gordon G. Noble, Traveling Freight & Passenger Agent.
 PITTSBURGH, PA.—7026-29 Jenkins Arcade Bldg., 5th and Liberty Aves.
 John D. Carter, General Agent.
 Edward Emery, District Passenger Agent.
 G. O. Hassenfritz, Traveling Frt. & Pass'r Agent.
 Gaylord F. Allen, Traveling Frt. & Pass'r Agent.
 ST. LOUIS, MO.—2053 Railway Exchange Bldg., 611 Olive St.
 J. L. Carney, General Agent.
 A. J. Rakers, Traveling Frt. & Pass'r Agent.
 J. W. McBurney, Traveling Frt. & Pass'r Agent.
 Jas. F. Kirkland, City Passenger Agent.
 TORONTO, ONT.—201 Canadian Pacific Ry. Bldg., 69 Yonge St.
 Geo. W. Vaux, General Agent.

W. S. Basinger,
 Passenger Traffic Manager,
 Omaha, Neb.

A. L. Craig,
 Gen'l Pass'r Agent,
 Omaha, Neb.

Wm. McMurray,
 Gen'l Passenger Agent,
 Portland, Ore.

D. S. Spencer,
 Gen'l Pass'r Agent,
 Salt Lake City, Utah
 T. C. Peck
 Gen'l Pass'r Agent
 Los Angeles, Cal.

Union Pacific System

RAND McNALLY & COMPANY, CHICAGO

SUMMER TOURS

