



Issued by the Passenger Department
San Pedro, Los Angeles & Salt Lake
Railroad



T. C. PECK, Gen'l Passr. Agent
F. A. WANN, Gen'l Traffic Manager
Los Angeles, California

175th Thousand. 1-08

A Souvenir of
Delightful Journeys

SCENICALLY beautiful is the
country traversed by the Salt
Lake Route, the short line between Salt Lake
City, Los Angeles and the Western Sea. Nevada's
mountain circled valleys and picturesque canyons are
equalled only by the scenic charms of Southern
California. On the following pages are sug-
gestions of what may be seen on short
journeys from Los Angeles



How is this for an idea?

San Bernardino and
Arrowhead Mountain

SAN BERNARDINO is a charming little city, at the base of Arrowhead Mountain, and is the gateway to Southern California. Arrowhead Mountain is so called from the singular natural symbol on its side, which is clearly shown in the picture on opposite page. Arrowhead Hot Springs Hotel, at the foot of the mountain, is a noted resort, and reached by regular electric car service from San Bernardino.





Riverside

IN the heart of the great orange district, and a thriving commercial city with many beautiful homes and gardens. Magnolia Avenue, pictured on opposite page, is world famous for its beauty. Other beautiful drives include the magnificent panoramic boulevard which winds around, and to the summit of Rubidoux Mountain, the orange bordered Victoria Avenue, and tropically beautiful Palm Drive.





A Wonderful
Scenic Drive

FOUR miles of splendid road,
blasted out of the solid rock
and winding around Rubidoux Mountain to
a height of 1,300 feet, with beautiful scenic views of
mountains and valleys. Such is the famous Hunt-
ington Park Drive at Riverside. Near the
top stands the cross pictured on
opposite page.





The Glenwood
Riverside's Mission Inn

A LONG, low, cloistered building of Old Mission type of architecture. The Glenwood is unique among modern hotels. The chime of Mission bells in the stately campanile, the great open patio or court, tree shaded and flower embowered, are reminiscent of ancient days. The service and cuisine, however, are of the high quality demanded by present day travelers.





Redlands

NINE miles by electric railway from San Bernardino is this gem of Southern California cities, embowered in orange groves and flower gardens. From Canyon Crest Park are obtained beautiful vistas of valley and mountain. McKinley Drive is a noted scenic thoroughfare. Many beautiful homes amidst spacious grounds and orange groves may be seen.

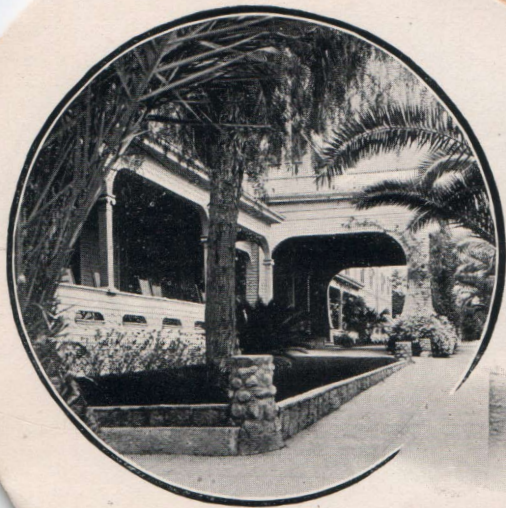




Redlands

QUIET and homelike is the well known Casa Loma Hotel at Redlands, recently improved at a large expense. The excellence of the service and appointments has made it a favorite with travelers in California.





The
King of Bridges

SIX miles west of Riverside,
and spanning the Santa Ana
river bed, is one of the largest concrete bridges in
the world. One thousand feet long and fifty feet
high, this great structure is an interesting
object in the journey.





Ontario

FREQUENTLY called the
"Model Colony," Ontario
is one of the most beautiful of the
several towns in the orange district. Nestling
amid the orange groves at the foot of the snow-capped
Sierra Madre, it presents a picture of scenic charm.
Delightful drives may be taken through Euclid
Avenue and the surrounding country.





Pomona

APPROPRIATELY named
for the goddess of fruits
and flowers. The beautiful homes, gardens
and palm lined streets of Pomona are delightful to
behold. Many of these are situated in the midst of
orange groves. Pomona's parks are noted for their
beauty, principal among them being Ganesha
Park, which crowns a commanding hill
north of the city.





Orange Groves

THROUGH the heart of
the great orange district
runs the line of the Salt Lake Route. Many
thousands of acres are covered with these orange
trees, yielding their wealth of golden fruit.
From San Bernardino to Pomona
they may be seen.





Pasadena

"Crown of the Valley"

TRULY a "Crown of the Valley"
is Pasadena, with its broad tree-
bordered avenues and palatial homes, set in
the midst of spacious lawns, shrubbery and flowers.
Orange Grove Avenue, shown opposite, is a noted
thoroughfare. Illustrating the wealth of floral pos-
sibilities in mid-winter is the annual Tourna-
ment of Roses on New Year's Day.





Parks of
Los Angeles

PROMINENT among the many attractions of Los Angeles are its beautiful parks, each possessing distinctive features. Flowers in profusion, shrubbery and trees of infinite variety, some familiar and many strange, gladden the eye of the visitor. Pictured opposite is a scene in Westlake Park, one of the most beautiful in Southern California.





Residence Streets of
Los Angeles

BBROAD, beautiful streets, lined with graceful trees of many varieties, afford delightful drives through the charming residence districts. Verdant lawns, with a profusion of flowers, shrubbery and trees, adorn the spacious grounds surrounding the handsome homes. The residence here shown is an example of the Mission type so much used.





A Beauty Spot in
Los Angeles

IN the finest residence district of
the city are several private drives
lined with beautiful residences and spacious grounds.
St. James Park, here shown, is one of the
most noted.





Residences of
Los Angeles

ALMOST every known type
of architecture is represented
in the residences of Los Angeles. Of
the many types, one of the most attractive is
this West Adams Street home.





Long Beach

A CHARMING seaside city,
twenty-one miles south of
Los Angeles on the Salt Lake Route. Among
its many attractions are the finest bathing beach
along the coast, a mammoth bathing pavilion, and
the great pleasure pier. A most attractive resort,
both winter and summer. Sea bathing
may be enjoyed on each day
throughout the year.





Long Beach


THE well equipped bathing pavilion affords, in its great pools and other facilities, enjoyment for those who do not care for surf bathing. In the Auditorium, also on the beach, entertainment may be found in the excellent band concerts. As a residence city Long Beach possesses exceptional advantages.





San Pedro Harbor

SAN PEDRO, 27 miles from Los Angeles, is the Pacific terminus of the Salt Lake Route. The inner harbor is always a scene of busy industry, with ships from the world's ports loading or discharging cargo. The great outer harbor is nearly encircled by the new \$3,000,000 government breakwater. From the Salt Lake Route dock steamers sail for Catalina Island, 22 miles distant.



Information

Relative to the journeys mentioned
in this booklet, as well as through trips
between California and eastern points, service
of Los Angeles Limited and other trains, will be
promptly furnished by M. de Brabant, General Agent,
290 Broadway, New York; Geo. M. Sargent, General
Agent, 202 Clark St., Chicago; _____

General Agent, Bessemer Building, Pittsburg, Pa.,

J. H. Burtner, District Passenger Agent,

169 So. Main St., Salt Lake City,

T. F. Bowes, District Passenger

Agent, 601 South Spring St.,

Los Angeles or any agent

of the

Salt Lake Route

