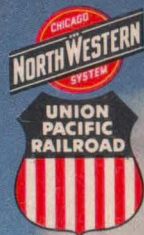


# SUMMER TOURS

1952



NORTH WESTERN • UNION PACIFIC

**ESCORTED  
ALL-EXPENSE TOURS  
TO  
WESTERN  
WONDERLANDS**





# INDEX

## GENERAL

### PAGES

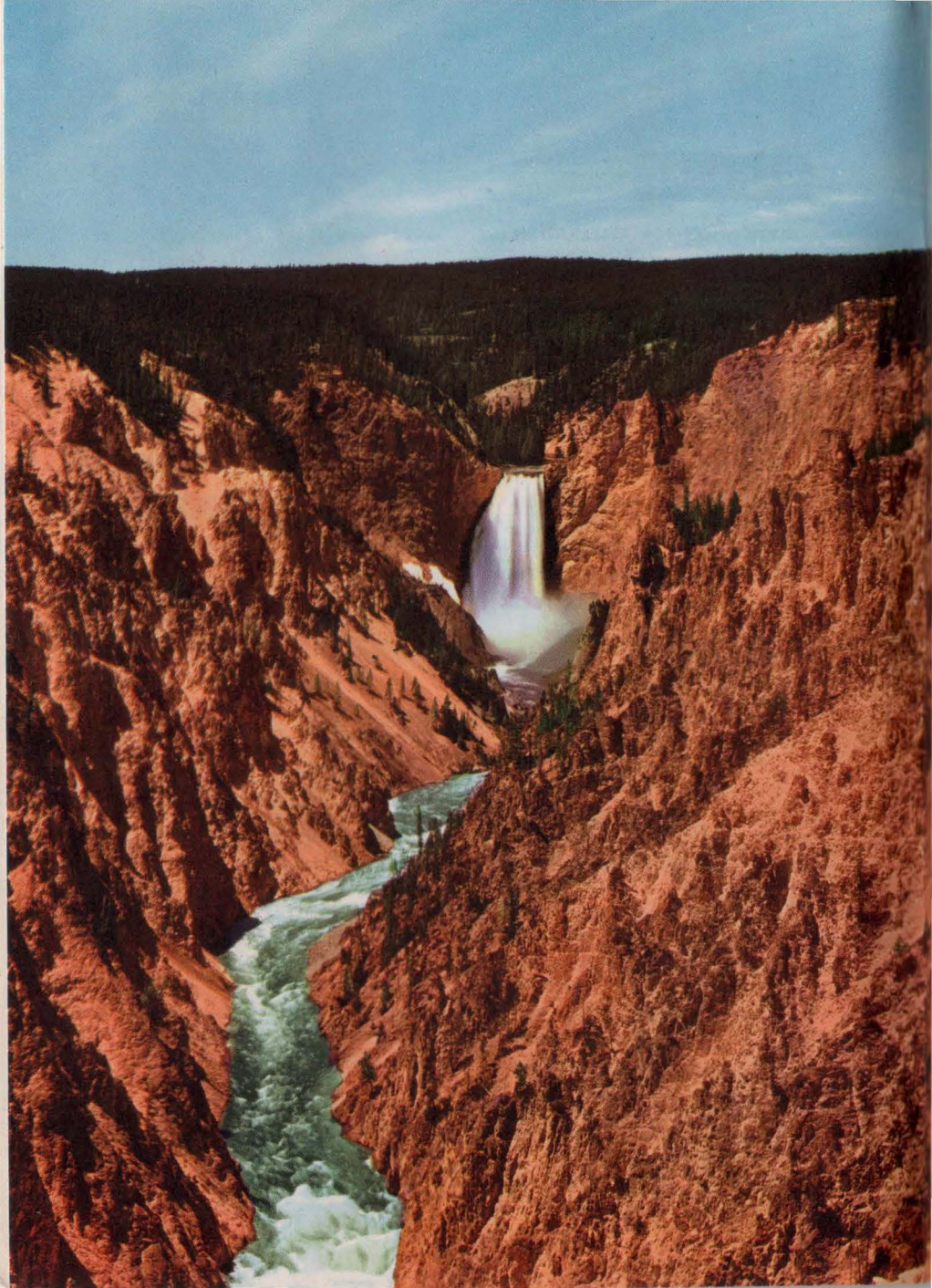
APPLICATION FOR RESERVATION .....	63
GENERAL INFORMATION .....	60-62
INTRODUCTION .....	3-5
COMBINATION TOURS .....	62

## MAPS

CALIFORNIA .....	46
COLORADO .....	42
TOUR MAP .....	INSIDE BACK COVER
NORTH WESTERN - UNION PACIFIC LINES	
YELLOWSTONE-GRAND TETON NATIONAL PARKS .....	6
UTAH-ARIZONA NATIONAL PARKS .....	26

## TOURS

"SYD"	8 DAYS	YELLOWSTONE NATIONAL PARK— SALT LAKE CITY - DENVER .....	7-11
"YD"	8 DAYS	YELLOWSTONE NATIONAL PARK— SALT LAKE CITY - DENVER .....	12-15
"YT"	9 DAYS	YELLOWSTONE-GRAND TETON NATIONAL PARKS— JACKSON HOLE - SALT LAKE - DENVER .....	16-20
"YCS"	10 DAYS	YELLOWSTONE NATIONAL PARK - SALT LAKE CITY - COLORADO SPRINGS - PIKES PEAK - DENVER ..	21-25
"Z"	12 DAYS	ZION-BRYCE CANYON-GRAND CANYON NATIONAL PARKS—SALT LAKE CITY - DENVER	27-31
"YZ"	13 DAYS	YELLOWSTONE-ZION-BRYCE CANYON-GRAND CANYON NAT'L. PARKS—SALT LAKE CITY ....	34-40
"RM"	8 DAYS	ROCKY MOUNTAIN NATIONAL (ESTES) PARKS— COLORADO SPRINGS - PIKES PEAK - DENVER	41-45
"C"	15 DAYS	CALIFORNIA - YOSEMITE NATIONAL PARK - HOOVER DAM - OLD MEXICO - CATALINA...	47-54
"BC"	13 DAYS	CALIFORNIA - YOSEMITE NATIONAL PARK - LAS VEGAS - HOOVER DAM .....	55-58







## THE TOUR WAY

**the easy, carefree,  
inexpensive way to enjoy a western vacation**

### **Why a Tour?**

How well does the average vacation fulfill its purpose? — refresh you mentally and physically? — eliminate all work and worry? Usually there's a lot of planning to do—deciding where to stay and writing for reservations, or playing the risky game of "trusting to luck." And you wonder what it's all going to cost—how much money to take along "just in case." And there's the problem of choosing places to eat, routes to follow, time tables to check for train departures and arrivals. You have fun, BUT you can't be completely at ease all of the time. This is not conducive to a restful vacation.

The idea of North Western-Union Pacific Tours is to cut away the bone and fat of worrisome details and leave you free to enjoy the lean meat of a carefree, fun-filled vacation. Equally important, this pre-planning and the extra services provided, actually cost less than you would pay to take the same vacation by making all arrangements yourself. This is just plain, common business sense.

### **Why the West?**

Horace Greeley was thinking only of career opportunity when he said, "Go West." The kind of opportunity we have in mind is for fun and relaxation. And where but in the glorious West will you find these at their best? Here, ages ago, nature set to work with her tools—wind and rain, heat and cold—and in due time produced wonderlands so spectacular, so colorful and breath-taking, it would be difficult to find their counterpart anywhere else in the world!

## Explore this Exciting Western World

North Western-Union Pacific Tours enable you to enjoy these national parks and wonderlands of the West as they should be enjoyed—in carefree fashion with competent escort to look after all details.

**Yellowstone and Grand Teton National Parks.** Yellowstone, Nature's Curiosity Shop, is the oldest, largest and best known of all the parks. You see its geysers, mud volcanoes, boiling "paint pots." And what a thrill to view its flashing Yellowstone Falls, twice the height of Niagara. Nearby Grand Teton is noted for its Alp-like mountain splendor.

**Grand Canyon.** A "canyon" of tremendous, awe-inspiring proportions. The soft, subtle color nuances change before your eyes as the sun moves across the deep blue of a western sky. As you gaze over the canyon rim, a mile below, you see the Colorado River, a glimmering thread of silver in the distance!

**Zion.** You see most of Zion from the floor of the canyon, gazing up at the towering "temples" of rock, among them the world famous Great White Throne. Here and there the canyon widens into majestic courts and fascinating, sun-lit glades. The coloring ranges from deep red to white.

**Bryce Canyon.** A vast bowl filled with a bewildering array of weird rock formations. With their fiery red and orange colors, it would not be hard to believe that in an earlier age they were the jewels of the Gods—gigantic garnets, amethysts and rubies.

**Rocky Mountain National Park.** Mountain scenery is at its rugged, snow-capped best in this popular Circle Tour. Includes Iceberg Lake, never free from ice, and you cross and recross the Continental Divide with its glorious sweep of mountain grandeur.

**Denver Mountain Parks.** This Colorado treat is included in many of the tours. Famous for mountain fastnesses and abundant wild life. You follow Lariat Trail to Lookout Mountain and Buffalo Bill's grave.

**Colorado Springs.** The Pikes Peak Region and Garden of the Gods are included in some of the tours.

**California Tours.** You've dreamed of visiting these places of enchantment—Los Angeles, Hollywood, Catalina Island, San Francisco, Yosemite National Park. Old Mexico and Las Vegas, too. And what better way is there for seeing them?

**Salt Lake City.** Beautiful capital city of Utah. Swim in Great Salt Lake where it's impossible to sink! Hear an inspiring organ recital at the historic Mormon Tabernacle.



## **Best of Everything!**

You'll ride on modern air-conditioned trains with coaches and Pullman cars reserved for your tour party. You stay at the finest hotels and lodges . . . get special attention and the finest of food wherever you go. Your congenial escort is a private information bureau. He looks after such details as baggage transfers, departure times, room arrangements, sightseeing trips . . . makes you feel at home from the moment the tour begins. If you are traveling by yourself you'll soon have plenty of friends.

### **NO EXTRA CHARGE**

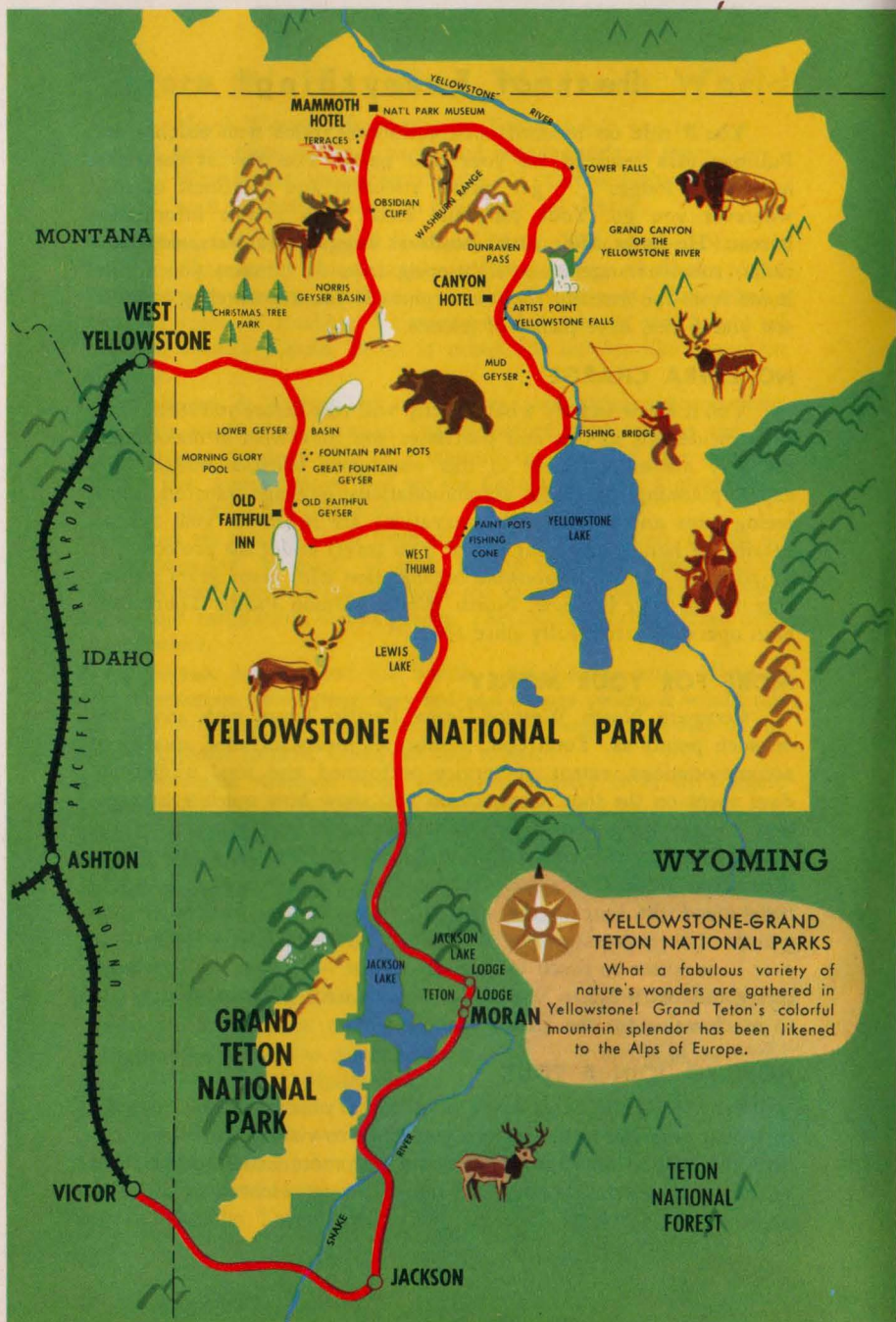
You'll know exactly what the trip will cost before you start. Only such incidentals as tips and purchases you may wish to make along the way are extra. Spent in this way, your vacation budget buys expert planning, overnight accommodations, baggage transfers, sightseeing trips and meals. All reservations are made for you, and all details are handled by your escort. You travel under the protection of a nationally known, responsible organization with many years' experience in the tour business. North Western-Union Pacific Tours have been operated successfully since 1900.

### **MORE FOR YOUR MONEY**

Compare North Western-Union Pacific Tours with any other on such points as: Total cost, number of meals included, quality of accommodations, extent of service performed and total number of days spent on the tour. Comparison will show how much your vacation dollars bring you through the combined buying power of the North Western and Union Pacific Railroads. Here are a few quotations from letters received from former tour patrons: "I would recommend the tour to the most discriminating"—"Realization was greater than expectation"—"Without an escorted tour no one could ever hope to see so much in so short a time"—"It was my fourth escorted tour with North Western-Union Pacific"—"Have never gotten so much value for the money spent."

### **HOW TO JOIN A TOUR**

Browse through this book, and make your selection from the trips that take you to the regions you'd like to visit. Then fill out and mail the coupon on page 63. If you'd like more details or personal assistance in selecting a tour, see any of the representatives listed on pages 63 and 64.





# YELLOWSTONE NATIONAL PARK

## SALT LAKE CITY-DENVER

TOUR "SYD" ALL EXPENSE 8 DAYS  
IN PULLMAN ACCOMMODATIONS \$203.54

(IN RECLINING-SEAT COACH \$163.27)

Plus Tax

All Meals Are Included in the Cost.

TOURS LEAVE CHICAGO AT 3:30 PM ON SUNDAYS AS FOLLOWS:

SYD-1 Sun. June 22	SYD-5 Sun. July 20	SYD- 8 Sun. Aug. 10
SYD-2 Sun. June 29	SYD-6 Sun. July 27	SYD- 9 Sun. Aug. 17
SYD-3 Sun. July 6	SYD-7 Sun. Aug. 3	SYD-10 Sun. Aug. 24
SYD-4 Sun. July 13		SYD-11 Sun. Aug. 31

### DETAILED SCHEDULE

Lv. Chicago, Ill. .... 3:30 PM Sunday 1st day C & NW Ry.

During the afternoon you traverse the rolling farmlands of Illinois and Iowa; cross the broad Mississippi and Missouri Rivers and arrive Omaha about midnight. You will enjoy dinner in the dining car.

Ar. Omaha, Nebr. .... 12:40 AM Monday 2nd day C & NW Ry.

The Mormon Temple, Salt Lake City

7



Lv. Omaha, Nebr. .... 12:55 AM      Monday      2nd day      Un. Pac. RR.

While you sleep the train crosses Nebraska, following the route of the covered wagons and early-day immigrants. All the while you are gaining elevation and morning finds you in Cheyenne, Wyoming. All day you are crossing Wyoming, viewing a variety of inspiring mountain scenery. You will wish to retire early to your comfortable Pullman bed so you can rise in time to view some of the marvelous scenery approaching the entrance to Yellowstone National Park.

Ar. West Yellowstone, Mont. ... 7:30 AM      Tuesday      3rd day      Un. Pac. RR.

Breakfast in Union Pacific's attractive lodge.

### 'MOTOR CIRCLE TOUR OF YELLOWSTONE NATIONAL PARK

Lv. West Yellowstone ..... 9:30 AM      Tuesday      3rd day      Motor

Immediately after breakfast you board comfortable motor buses to take you to Old Faithful Inn for your first overnight stop. On the way you pause at Riverside, Grotto and Giant Geysers, Fountain Paint Pots—in reality molten clay—Morning Glory Pool, so named for its flowerlike, delicately-tinted cone, and other interesting formations. Peer deeply into Firehole Lake and you can readily imagine that underneath the water are blue flames, jetting from some underground furnace.

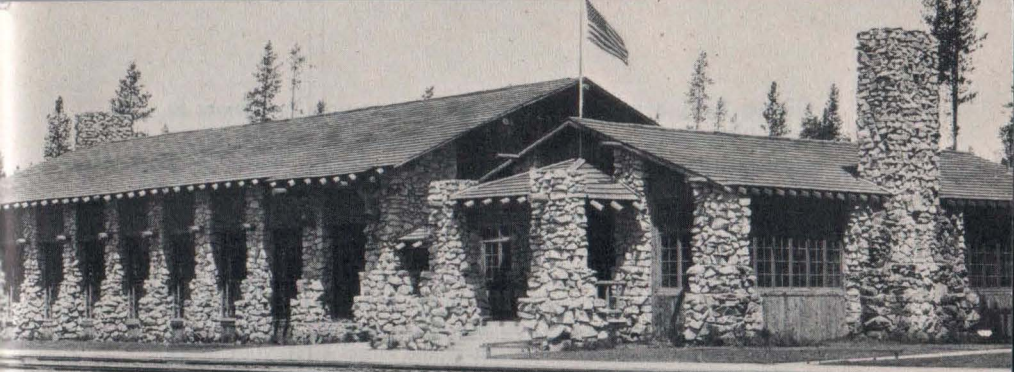
Ar. Old Faithful Inn ..... 11:56 AM      Tuesday      3rd day      Motor

Old Faithful Geyser, just a step from the Inn, is the favorite among the geysers because of its regularity. You consult the clock in the lobby of the Inn which tells the time of the next eruption and determine nothing will interfere with your being on hand to confirm the mental picture of this spectacle you have carried since childhood. After luncheon in the pleasant dining room at the Inn, you join the party going on a hiking tour of the geyser formations conducted by the Park Ranger-Naturalist. After dinner you can dance, enjoy the entertainment and Ranger-Naturalist lecture—or just relax and watch Old Faithful go through its performance while giant searchlights play on the rising column of steaming water—an unforgettable sight. Overnight and breakfast at Old Faithful Inn. One last look at Old Faithful and then

Lv. Old Faithful Inn ..... 8:30 AM      Wednesday      4th day      Motor

Your motor bus takes you on the thrilling ride over the Continental Divide. On the way stops are made at Kepler Cascades, then on to sparkling Yellowstone Lake, pausing on the shores of this mountain-girded body of water—largest at this altitude—to see Fishing Cone, Thumb Paint Pots and other interesting formations. Your destination is Grand Canyon and your driver pauses momentarily at Artist Point for your first breath-taking view of this gorgeous abyss with the mighty falls dwarfed in the distance, before taking you on to Canyon Hotel to get settled and "fresh-up" for luncheon.





Union Pacific dining lodge, West Yellowstone

Ar. Canyon Hotel .....11:55 AM      Wednesday      4th day      Motor

The Grand Canyon of the Yellowstone! Words are inadequate to describe the Yellowstone River, a mighty cataract of water coursing ceaselessly and thunderously down its precipitous incline. Here is one of nature's most inspiring spectacles, and you will wish to view it from many vantage points. In the afternoon you will no doubt want to go down one of the trails and view the falls and canyon from the bottom. There are also thrilling horseback trails around the rim. In the evening dancing, cards and entertainment enliven the hours until bedtime. Canyon Hotel has one of the most beautiful lounges of any hotel in America.

Lv. Canyon Hotel ..... 9:45 AM      Thursday      5th day      Motor

A fascinating trip is made over spectacular Dunraven Pass. You stop at Tower Falls, with a drop of 132 feet, one of the outstanding scenic features of the Park. Your route is through some of the finest forest sections where outstanding specimens of fir, balsam, spruce, cedar and aspen are to be found.

Ar. Mammoth Springs Hotel ....12:31 PM      Thursday      5th day      Motor

You are just in time for luncheon in the attractive Mammoth Terrace Dining Room. After luncheon there's ample time to visit the National Park Museum and the vari-tinted terraces. Steaming waters of hot springs, laden with minerals, flow over the terraces, the steps of which are exquisitely tinted by the algae (plant life) living in the hot water. The colors seemingly vibrate and glow in the sunlight.

Lv. Mammoth Springs Hotel .... 2:30 PM      Thursday      5th day      Motor

Again you feast your eyes upon Yellowstone's eerie formations . . . Obsidian Cliff, Roaring Mountain, Norris Geyser Basin,

Gibbon Falls, arriving West Yellowstone in time for dinner in the dining lodge.

Ar. West Yellowstone, Mont. . . . .	5:08 PM	Thursday	5th day	Motor
Lv. West Yellowstone, Mont. . . . .	7:30 PM	Thursday	5th day	Un. Pac. RR.
Ar. Ogden, Utah . . . . .	6:15 AM	Friday	6th day	Un. Pac. RR.
Ar. Salt Lake City, Utah . . . . .	7:30 AM	Friday	6th day	Un. Pac. RR.

Comfortable motor buses meet your train and whisk you to the Hotel Utah for a delightful breakfast, then away for an all-morning sightseeing trip, terminating at noon for the organ recital in the Tabernacle. You are also taken on a tour of the Temple Grounds. After luncheon at the Hotel Utah your party leaves at 2:15 PM for the trip to famous Saltair Beach, where you "can't sink," should you elect to take a dip in Great Salt Lake. Return to the Union Pacific Station in time to board the "Pony Express" and enjoy a delightful dinner in the attractive dining car as your train heads for Denver, Colorado.

Lv. Salt Lake City, Utah . . . . .	5:45 PM	Friday	6th day	Un. Pac. RR.
Ar. Denver, Colo. . . . .	8:00 AM	Saturday	7th day	Un. Pac. RR.

You will have breakfast in the dining car before arrival at Denver Union Station where modern motor buses meet you on arrival to take you on the scenically-beautiful tour of Denver Mountain Parks. Leaving the Station at 8:15 A.M. your party proceeds through downtown Denver; out through the suburbs





along beautiful boulevards, and then starts the gradual ascent of Lookout Mountain, site of Buffalo Bill's grave and Memorial Museum. An inspiring view of the plains to the east and the Continental Divide to the west is obtained from the crest of Lookout Mountain. Resuming your tour on the broad highway you see Bergen Park, and for 12 miles follow sparkling Bear Creek between towering walls of vari-colored granite, emerging at brilliant and fantastic Red Rocks Park. You return to Denver for luncheon at the Cosmopolitan Hotel. The afternoon is left open for shopping or independent sightseeing. You will probably wish to do both. At 4:00 you leave the hotel for the Union Station.

Lv. Denver, Colo. .... 5:00 PM      Saturday      7th day      Un. Pac. RR.

As your train speeds eastward on the last lap of this delightful tour, you enjoy another of those delicious dining car meals; an evening of congenial companionship in the lounge car; a friendly game of cards, a good book, or just relaxing, reliving the many happy experiences of the past few days.

Ar. Omaha, Nebr. .... 4:10 AM      Sunday      8th day      Un. Pac. RR.

Breakfast and luncheon in the dining car, then fond farewells to your traveling companions. You'll say it was one of the finest vacations you ever had . . . and probably the most economical.

Ar. Chicago, Ill. .... 2:00 PM      Sunday      8th day      C & NW Ry.

### Cost of Complete "SYD" Circle Tour Including All Meals

FROM CHICAGO, RETURNING TO CHICAGO

PER PERSON, USING MODERN

	With Rail Ticket	Without Rail Ticket
RECLINING-SEAT COACH .....	\$163.27	\$ 99.22
Tax.....	15.40	5.79
Two persons occupying lower berth, each person....	203.54	120.54
Tax.....	20.78	8.33
One person occupying lower berth .....	222.98	139.98
Tax.....	23.31	10.86
One person occupying upper berth .....	213.60	130.60
Tax.....	22.09	9.64
Two persons occupying compartment, each person ..	238.62	155.62
Tax.....	25.35	12.90
Three persons occupying compartment, each person	220.45	137.45
Tax.....	22.98	10.53
Two persons occupying drawing room, each person..	257.99	174.99
Tax.....	27.88	15.43
Three persons occupying drawing room, each person	233.37	150.37
Tax.....	24.67	12.22

Additional drawing room and compartment rates, also rates for children under 12 years of age quoted on application.

The above rates, shown with and without rail fare from Chicago, are based on \$64.05 plus \$9.61 Federal tax, when using modern reclining seat coaches, or \$83.00 plus \$12.45 Federal tax, when using Standard Pullman. Tour cost is also based on double room without bath at hotels in Yellowstone Park. For rates from points east of Chicago add rail fare, plus tax, from home station to amount shown "Without Rail Ticket."

**Make your reservations through any representative shown on pages 63 or 64.**

# YELLOWSTONE NATIONAL PARK

## SALT LAKE CITY      DENVER

TOUR "YD"      ALL EXPENSE — \$203.54      8 DAYS

Plus Tax

All Meals Are Included in the Cost.

TOURS LEAVE CHICAGO AT 3:30 PM ON SATURDAYS AS FOLLOWS:

YD-1 Sat. June 21

YD-5 Sat. July 19

YD- 8 Sat. Aug. 9

YD-2 Sat. June 28

YD-6 Sat. July 26

YD- 9 Sat. Aug. 16

YD-3 Sat. July 5

YD-7 Sat. Aug. 2

YD-10 Sat. Aug. 23

YD-4 Sat. July 12

YD-11 Sat. Aug. 30

### DETAILED SCHEDULE

Lv. Chicago, Ill. .... 3:30 PM      Saturday      1st day      C & NW Ry.

Your vacation has begun! Smoothly your train pulls away from the station, and you look forward to your first afternoon of travel pleasure. Perhaps a game of cards, a bit of easy-chair relaxation, or the fun of watching the passing scenery.

Ar. Omaha, Nebr. .... 12:40 AM

Sunday

2nd day

C & NW Ry.

Lv. Omaha, Nebr. .... 12:55 AM

Sunday

2nd day

Un. Pac. RR.

During the night and early morning you cross Nebraska, enter Wyoming. Watches are changed to Mountain Time, your train climbs steadily to higher elevations, and you are fascinated by wide stretches of cattle country that run to distant mountains. It is the glamorous West, the romantic West. You are thoroughly at home on your comfortable train, Dining Car meals are delicious, your vacation has begun well, you are enjoying every moment. Yellowstone in the morning!

Ar. West Yellowstone, Mont. ... 7:30 AM

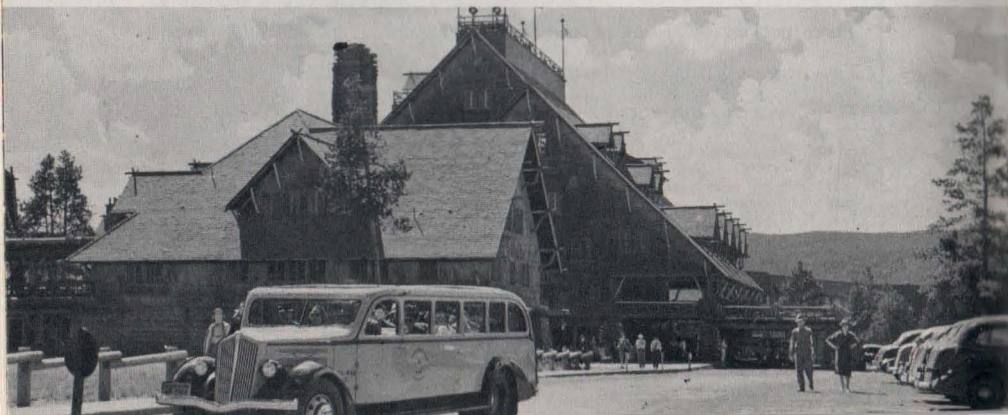
Monday

3rd day

Un. Pac. RR.

12

Modern, comfortable Yellowstone bus at Old Faithful Inn







Amphitheatre Red Rocks Park near Denver

## MOTOR CIRCLE TOUR OF YELLOWSTONE NATIONAL PARK

Lv. West Yellowstone ..... 9:30 AM      Monday      3rd day      Motor

Motor to Old Faithful Inn. Enroute Riverside, Grotto and Giant Geysers; Fountain Paint Pots, Morning Glory Pool.

Ar. Old Faithful Inn ..... 11:56 AM      Monday      3rd day      Motor

Site of one of the world's best-known spectacles, Old Faithful Geyser. After luncheon you can ride, hike or just relax at the Inn and watch Old Faithful perform almost hourly. Dancing, entertainment by night.

Lv. Old Faithful Inn ..... 8:30 AM      Tuesday      4th day      Motor

Your route takes you over the Continental Divide. Enroute you will see Kepler Cascades, Yellowstone Lake, Fishing Cone, Thumb Paint Pots and others of Yellowstone's wonders.

Ar. Canyon Hotel ..... 11:55 AM      Tuesday      4th day      Motor

After luncheon you view the Canyon and Falls from many vantage points. Horseback and foot trails lead around the rim and into the canyon. Informal entertainment, music, dancing at night. Early morning the following day you continue to absorb the beauty of this delightful place, and after breakfast you

Lv. Canyon Hotel ..... 9:45 AM      Wednesday      5th day      Motor

Leaving Canyon Hotel you will travel via Dunraven Pass . . . stop at Tower Falls . . . see other fascinating sights.

Ar. Mammoth Springs Hotel .... 12:31 PM      Wednesday      5th day      Motor

You are just in time for luncheon in the attractive Mammoth Terrace Dining Room. After luncheon there's ample time to visit the National Park Museum and the vari-tinted terraces.

Lv. Mammoth Springs Hotel . . . . 2:30 PM

Wednesday 5th day

Motor

More of Yellowstone's eerie wonders . . . Obsidian Cliff, a mountainside of volcanic glass . . . Roaring Mountain . . . fascinating Norris Geyser Basin, arriving West Yellowstone in time for dinner.

Ar. West Yellowstone, Mont. . . . 5:08 PM

Wednesday 5th day

Motor

Lv. West Yellowstone, Mont. . . . 7:30 PM

Wednesday

5th day

Un. Pac. RR.

Ar. Ogden, Utah . . . . . 6:15 AM

Thursday

6th day

Un. Pac. RR.

Ar. Salt Lake City, Utah . . . . . 7:30 AM

Thursday

6th day

Un. Pac. RR.

Comfortable motor buses meet your train and whisk you to the Hotel Utah for a delightful breakfast, then away for an all-morning sightseeing trip, terminating at noon for the organ recital in the Tabernacle. You are also taken on a tour of the Temple Grounds. After luncheon at the Hotel Utah your party leaves at 2:15 PM for the trip to famous Saltair Beach, where you "can't sink," should you elect to take a dip in Great Salt Lake. Return to the Union Pacific Station in time to board the "Pony Express" and enjoy a delightful dinner in the attractive dining car as your train heads for Denver, Colorado.

Lv. Salt Lake City, Utah . . . . . 5:45 PM

Thursday

6th day

Un. Pac. RR.

Ar. Denver, Colo. . . . . 8:00 AM

Friday

7th day

Un. Pac. RR.

You will have breakfast in the dining car before arrival at Denver Union Station where modern motor buses meet you on arrival to take you on the scenically-beautiful tour of Denver Mountain Parks. Leaving the Station at 8:15 AM your party





proceeds through downtown Denver; out through the suburbs along beautiful boulevards, and then starts the gradual ascent of Lookout Mountain, site of Buffalo Bill's grave and Memorial Museum. An inspiring view of the plains to the east and the Continental Divide to the west is obtained from the crest of Lookout Mountain. Resuming your tour on the broad highway you see Bergen Park, and for 12 miles follow sparkling Bear Creek between towering walls of vari-colored granite, emerging at brilliant and fantastic Red Rocks Park. Here you will have an opportunity to browse through the fascinating Indian Museum before boarding your bus for the return to Denver. Luncheon at the Cosmopolitan Hotel with the afternoon open for shopping or independent sightseeing.

Lv. Denver, Colo. .... 5:00 PM Friday 7th day Un. Pac. RR.

As your train speeds eastward on the last lap of this delightful tour, you enjoy another of those delicious dining car meals; an evening of congenial companionship in the lounge car; a friendly game of cards, a good book, or just relaxing, reliving the many happy experiences of the past few days.

Ar. Omaha, Nebr. .... 4:10 AM Saturday 8th day Un. Pac. RR.

Breakfast and luncheon in the dining car, then fond farewells to your traveling companions. You'll say it was one of the finest vacations you ever had . . . and probably the most economical.

Ar. Chicago, Ill. .... 2:00 PM Saturday 8th day C & NW Ry.

### Cost of Complete "YD" Circle Tour Including All Meals

FROM CHICAGO, RETURNING TO CHICAGO	With Rail Ticket	Without Rail Ticket
Two persons occupying lower berth, each person . . . .	\$203.54	\$120.54
Tax. ....	20.78	8.33
One person occupying lower berth . . . . .	222.98	139.98
Tax. ....	23.31	10.86
One person occupying upper berth . . . . .	213.60	130.60
Tax. ....	22.09	9.64
Two persons occupying compartment, each person . . .	238.62	155.62
Tax. ....	25.35	12.90
Three persons occupying compartment, each person . .	220.45	137.45
Tax. ....	22.98	10.53
Two persons occupying drawing room, each person . .	257.99	174.99
Tax. ....	27.88	15.43
Three persons occupying drawing room, each person . .	233.37	150.37
Tax. ....	24.67	12.22

Additional drawing room and compartment rates, also rates for children under 12 years of age quoted on application.

The above rates, shown with and without rail fare of \$83.00 plus \$12.45 Federal tax from Chicago, are based on double room without bath at hotels in Yellowstone Park. For rates from points east of Chicago add rail fare, plus tax, from home station to amount shown "Without Rail Ticket."

Make your reservations through any representative shown on pages 63 or 64.

# YELLOWSTONE — GRAND TETON NATIONAL PARKS JACKSON HOLE

SALT LAKE CITY      DENVER

TOUR "YT"

ALL EXPENSE — \$223.67

9 DAYS

Plus Tax

*All Meals Are Included in the Cost.*

TOURS LEAVE CHICAGO AT 3:30 PM ON SATURDAYS AS FOLLOWS:

YT-1 Sat. June 21

YT-5 Sat. July 19

YT- 8 Sat. Aug. 9

YT-2 Sat. June 28

YT-6 Sat. July 26

YT- 9 Sat. Aug. 16

YT-3 Sat. July 5

YT-7 Sat. Aug. 2

YT-10 Sat. Aug. 23

YT-4 Sat. July 12

YT-11 Sat. Aug. 30

## DETAILED SCHEDULE

Lv. Chicago, Ill. .... 3:30 PM      Saturday      1st day      C & NW Ry.

From your comfortable train seat you watch the passing panorama—the interesting “prairie lands” of Illinois’ and Iowa’s waving corn fields. Dinner is served in the Dining Car.

Ar. Omaha, Nebr. .... 12:40 AM

Sunday

2nd day

C & NW Ry.

Lv. Omaha, Nebr. .... 12:55 AM

Sunday

2nd day

Un. Pac. RR.

After a restful night you awaken to find yourself rolling smoothly over western Nebraska, in mid-morning entering Cheyenne, Wyoming. You sense the fact that this is the West of history and romance, of high altitudes and jagged mountain peaks. Breakfast, luncheon and dinner are Dining Car events. At 9:45

16

*Looking across Jackson Hole to the majestic Tetons.*







Church of the Transfiguration—  
Jackson Hole



Wild animal life offers fun for  
camera fans.

in the evening you reach Pocatello. You have enjoyed sightseeing from your train window; the companionship of congenial fellow travelers has been a treat.

Ar. Victor, Idaho ..... 7:00 AM      Monday      3rd day      Un. Pac. RR.

You detrain at Victor and have breakfast at the Timberline Cafe.

#### MOTOR TOUR OF GRAND TETON AND YELLOWSTONE NATIONAL PARKS

Lv. Victor, Idaho ..... 8:00 AM      Monday      3rd day      Motor

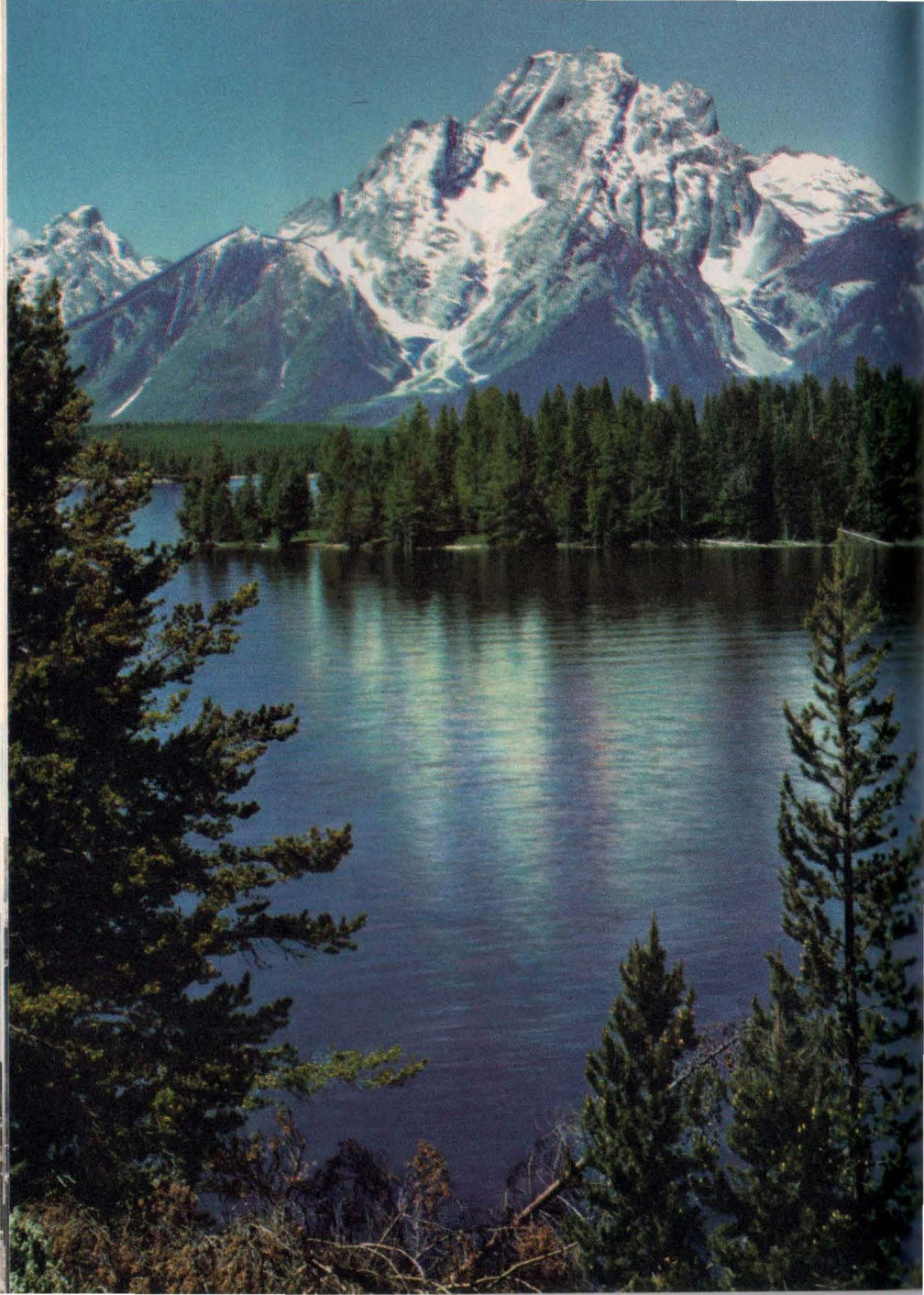
Immediately after breakfast at the Timberline Cafe you board comfortable motor buses for an unforgettable tour of Grand Teton and Yellowstone National Parks. Your bus takes you into the Jackson Hole country, once a hide-out for outlaws, now a national monument. Luncheon at Teton Lodge, Moran, Wyoming, and an inspiring view of beautiful Jackson Lake and its background of spectacular mountain peaks. Early afternoon you cross the boundary into Yellowstone National Park, and in succession visit Thumb Paint Pots, Fishing Cone, Mud Geyser, Yellowstone Lake and Artist Point, each a rare treat.

Ar. Canyon Hotel ..... 4:55 PM      Monday      3rd day      Motor

Dinner and lodging at Canyon Hotel, also breakfast and luncheon on Tuesday. You have ample time to view the world renowned Grand Canyon of the Yellowstone, its breathtaking Great Falls, its foaming, surging river. You stand in awe as the cascading waters rush thunderingly down the precipitous incline.

Lv. Canyon Hotel ..... 2:30 PM      Tuesday      4th day      Motor

On your way by motor bus to Mammoth Hot Springs. Your trip is over spectacular Dunraven Pass. You stop at Tower Falls, as indeed you should. The Falls have a drop of 132 feet, well worth a pause for camera-clicking and contemplation.







Popular Fishing Bridge in Yellowstone.

Ar. Mammoth Springs Hotel .... 5:16 PM      Tuesday      4th day      Motor

You check in and clean up a bit, after which dinner is ready for you in the Mammoth Terrace Dining Room. Then you may enjoy dancing; or perhaps you prefer to listen to a lecture by the Ranger-Naturalist. Next morning you're off to see the vari-tinted terraces just beyond the hotel.

Lv. Mammoth Springs Hotel .... 1:15 PM      Wednesday      5th day      Motor

Your bump of curiosity will be "well fed" as you gaze upon such formations as Obsidian Cliff, Roaring Mountain, Norris Geyser Basin and Gibbon Falls. On the way you also pause at Fountain Paint Pots, Firehole Lake, Morning Glory Pool, Riverside, Grotto and Giant Geysers.

Ar. Old Faithful Inn ..... 5:11 PM      Wednesday      5th day      Motor

Dinner and lodging at this popular Inn. Old Faithful Geyser, perhaps the most famous of all geysers and certainly the most regular, is but a step from the Inn. Thursday almost a full day at Old Faithful. You will want to go on a hiking tour of the geyser formations conducted by a Park Ranger Naturalist. In late afternoon you board your bus for another scenic drive that terminates at West Yellowstone for dinner.

Lv. Old Faithful Inn .....	4:00 PM	Thursday	6th day	Motor
Ar. West Yellowstone .....	5:12 PM	Thursday	6th day	Motor
Lv. West Yellowstone .....	7:30 PM	Thursday	6th day	Un. Pac. RR.
Ar. Ogden, Utah .....	6:15 AM	Friday	7th day	Un. Pac. RR.
Ar. Salt Lake City, Utah .....	7:30 AM	Friday	7th day	Un. Pac. RR.

Your headquarters while in Utah's fascinating capital city is the Hotel Utah, where breakfast and luncheon are served. Your tour of the city, by motor, terminates at Temple Grounds in time for the noon-hour organ recital at the Tabernacle. At 2:15 PM you motor to Saltair Beach where, if you like, you may go for a dip in Great Salt Lake. It will be a new thrill—you can't sink!

many stories of the old West. All day your train traverses Wyoming and then into Idaho. If you're up early enough you will see some inspiring mountain scenery on the approach to Yellowstone Park.

Ar. West Yellowstone, Mont. ... 7:30 AM      Monday      3rd day      Un. Pac. RR.

Breakfast in Union Pacific's attractive dining lodge.

### MOTOR CIRCLE TOUR OF YELLOWSTONE NATIONAL PARK

Lv. West Yellowstone ..... 9:30 AM      Monday      3rd day      Motor

Motor to Old Faithful Inn. Enroute Riverside, Grotto and Giant Geysers; Fountain Paint Pots, Morning Glory Pool.

Ar. Old Faithful Inn ..... 11:56 AM      Monday      3rd day      Motor

Site of one of the world's best-known spectacles, Old Faithful Geyser. After luncheon you can ride, hike or just relax at the Inn and watch Old Faithful perform almost hourly. Dancing, entertainment by night.

Lv. Old Faithful Inn ..... 8:30 AM      Tuesday      4th day      Motor

Your route takes you over the Continental Divide. Enroute you will see Kepler Cascades, Yellowstone Lake, Fishing Cone, Thumb Paint Pots and others of Yellowstone's wonders.

Ar. Canyon Hotel ..... 11:55 AM      Tuesday      4th day      Motor

After luncheon in the attractive dining room of the hotel you view the Canyon and Falls from many vantage points. Horseback and foot trails lead around the rim and into the canyon. Informal entertainment, music, dancing at night. Early morning the following day to absorb the beauty of this delightful place, and after breakfast you

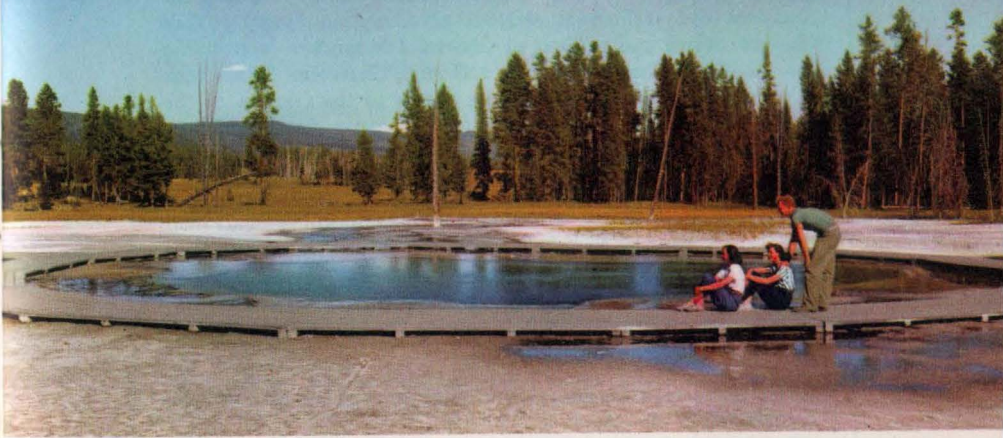
Lv. Canyon Hotel ..... 9:45 AM      Wednesday      5th day      Motor

Leaving Canyon Hotel your destination is Mammoth Hot Springs. On the way you will . . . stop at Tower Falls . . . The Needle, a slender rock pinnacle . . . Wraith Falls . . . see Mt. Everts . . . Bunsen Peak . . . Electric Peak, highest in the Park.

Ar. Mammoth Springs Hotel .... 12:31 PM      Wednesday      5th day      Motor

You are just in time for luncheon in the attractive Mammoth Terrace Dining Room. After luncheon there's ample time to visit the National Park Museum and the vari-tinted terraces.





*Jewel-like Emerald Pool*

Lv. Mammoth Springs Hotel .... 2:30 PM      Wednesday      5th day      Motor

More of Yellowstone's eerie wonders . . . Obsidian Cliff, a mountainside of volcanic glass . . . Roaring Mountain . . . fascinating Norris Geyser Basin, arriving West Yellowstone in time for dinner.

Ar. West Yellowstone, Mont. ... 5:08 PM	Wednesday	5th day	Motor
Lv. West Yellowstone, Mont. ... 7:30 PM	Wednesday	5th day	Un. Pac. RR.
Ar. Ogden, Utah ..... 6:15 AM	Thursday	6th day	Un. Pac. RR.
Ar. Salt Lake City, Utah ..... 7:30 AM	Thursday	6th day	Un. Pac. RR.

To the Hotel Utah for breakfast. All-morning sightseeing tour, terminating at noon at Mormon Temple grounds . . . organ recital in Tabernacle . . . luncheon Hotel Utah . . . then to Saltair Beach on Great Salt Lake. Return to Union Pacific Station, board "Pony Express" for Denver.

Lv. Salt Lake City, Utah ..... 5:45 PM	Thursday	6th day	Un. Pac. RR.
Ar. Denver, Colo. .... 8:00 AM	Friday	7th day	Un. Pac. RR.
Lv. Denver, Colo. .... 8:50 AM	Friday	7th day	D.&R.G.W.R.R.
Ar. Colorado Springs, Colo. ... 10:45 AM	Friday	7th day	D.&R.G.W.R.R.

Cars will be waiting to transfer you to the Antlers Hotel, where room with bath will be provided. A very wonderful panorama of Pikes Peak and the Rockies can be had from the Terrace

of the hotel. After luncheon, at 1:30 PM, you will leave by automobile on a very interesting and scenic tour including the business and residential sections of Colorado Springs; Will Rogers' Shrine and summit of Cheyenne Mountain—continuing on via North Cheyenne Canon and High Drive and Bear Creek Canon. You then continue on by motor to the Garden of the Gods where you will be served a typically western Chuck Wagon Dinner and entertained in Cowboy style. After a most enjoyable evening, you will return by motor to the hotel.

After breakfast at the hotel on Saturday morning—cars will leave at 8:30 AM for a thrilling, sixty-mile trip to the very summit of Pikes Peak (elevation 14,110 feet). Trip takes you through Manitou and historic Ute Pass. Luncheon and dinner at the hotel. Afternoon and evening open for independent action.

After an early breakfast at the hotel on Sunday, you will be transferred to the station at 7:30 AM.

Lv. Colorado Springs, Colo. ....	8:00 AM	Sunday	9th day	D.&R.G.W.R.R.
Ar. Denver, Colo. ....	9:50 AM	Sunday	9th day	D.&R.G.W.R.R.

At 10:00 AM you will make an hour and one-half motor sight-seeing tour of Denver—viewing the many beautiful parks and boulevards of this Mile High City; the business and residential sections; Civic Center, U.S. Mint and other attractions. Luncheon will be served at the Cosmopolitan Hotel. You will have a little time after lunch for window-shopping, curio buying, etc. Buses will transfer you from the Cosmopolitan Hotel to the Union Station at 4:00 PM.

Lv. Denver, Colo. ....	5:00 PM	Sunday	9th day	Un. Pac. RR.
------------------------	---------	--------	---------	--------------

After a satisfying dinner in the attractive dining car you will want to spend this last evening of the tour in the lounge car with members of your party, reliving the many happy experiences of the past few days.

Ar. Omaha, Nebr. ....	4:10 AM	Monday	10th day	Un. Pac. RR.
-----------------------	---------	--------	----------	--------------

The next day you will relax over a leisurely breakfast and luncheon as the train speeds across Iowa and Illinois. There will be many fond farewells and you will resolve to enjoy another of these delightful C&NW-Union Pacific tours again next year—one of the most perfect vacation trips you can remember.

Ar. Chicago, Ill. ....	2:00 PM	Monday	10th day	C & NW Ry.
------------------------	---------	--------	----------	------------



## Cost of Complete "YCS" Circle Tour Including All Meals

FROM CHICAGO, RETURNING TO CHICAGO	With Rail Ticket	Without Rail Ticket
Two persons occupying lower berth, each person . . .	\$238.30	\$155.30
Tax . . . . .	22.53	10.08
One person occupying lower berth . . . . .	259.81	176.81
Tax . . . . .	25.33	12.88
One person occupying upper berth . . . . .	249.40	166.40
Tax . . . . .	23.97	11.52
Two persons occupying compartment, each person . .	277.27	194.27
Tax . . . . .	27.61	15.16
Three persons occupying compartment, each person . .	257.11	174.11
Tax . . . . .	24.98	12.53
Two persons occupying drawing room, each person . .	298.56	215.56
Tax . . . . .	30.39	17.94
Three persons occupying drawing room, each person . .	271.31	188.31
Tax . . . . .	26.83	14.38

Additional drawing room and compartment rates, also rates for children under 12 years of age quoted on application.

The above rates, shown with and without rail fare of \$83.00 plus \$12.45 Federal tax from Chicago, are based on double room without bath at hotels in Yellowstone and on double room with bath at the Antlers Hotel. For rates from points east of Chicago add rail fare, plus tax, from home station to amount shown "Without Rail Ticket."

**Make your reservations through any representative shown on pages 63 or 64.**

25

The Antlers Hotel with Pikes Peak in the background





LUND

UNION PACIFIC RAILROAD

CEDAR CITY

CEDAR BREAKS NATIONAL MONUMENT

BRYCE JUNCTION

RED CANYON

INSPIRATION POINT

BRYCE CANYON NATIONAL PARK

RAINBOW POINT

BRYCE CANYON LODGE

DIXIE NATIONAL FOREST

LONG VALLEY JUNCTION

PINK CLIFFS

WHITE CLIFFS

VERMILION CLIFFS

ZION NATIONAL PARK

ZION LODGE

TEMPLE OF SHAWANAH  
MT. CARMEL HIGHWAY

MT. CARMEL

VERMILION CLIFFS

KANAB

FREDONIA

KAIBAB NATIONAL FOREST

GRAND CANYON NATIONAL PARK

POINT SUBLIME

GRAND CANYON LODGE

BRIGHT ANGEL POINT

POINT IMPERIAL

CAPE FINAL

CAPE ROYAL

## UTAH-ARIZONA PARKS

Here is concentrated what is considered to be the greatest array of scenic beauty in the world. A tour of these wonderlands is an experience never to be forgotten.

COLORADO RIVER



# BRYCE CANYON — GRAND CANYON ZION NATIONAL PARKS

CEDAR BREAKS      SALT LAKE CITY      DENVER

TOUR "Z"      ALL EXPENSE — \$284.08      12 DAYS

Plus Tax

*All Meals Are Included in the Cost.*

TOURS LEAVE CHICAGO AT 12:01 PM ON SUNDAYS AS FOLLOWS:

Z-1 Sun. June 15	Z-5 Sun. July 13	Z- 9 Sun. Aug. 10
Z-2 Sun. June 22	Z-6 Sun. July 20	Z-10 Sun. Aug. 17
Z-3 Sun. June 29	Z-7 Sun. July 27	Z-11 Sun. Aug. 24
Z-4 Sun. July 6	Z-8 Sun. Aug. 3	Z-12 Sun. Aug. 31

## DETAILED SCHEDULE

Lv. Chicago, Ill. ....12:01 PM      Sunday      1st day      C & NW Ry.

You will spend the afternoon getting acquainted with other members of your party, perhaps enjoying a friendly game of cards in the lounge car as the train traverses Illinois and the rolling farmlands of Iowa. Lunch and dinner in the dining car. Omaha is reached in the evening.

Ar. Omaha, Nebr. .... 9:00 PM      Sunday      1st day      C & NW Ry.  
Lv. Omaha, Nebr. .... 9:25 PM      Sunday      1st day      Un. Pac. RR.

27

Oastler's Castle, Bryce Canyon Nat'l Park, Utah



After a pleasant evening in the lounge car you will retire to your soft Pullman bed while your train speeds across Nebraska. Wrapped in restful slumber you will be unaware of the fact that you are gradually gaining elevation. In the morning Cheyenne, Wyoming, famous capital city of the state, is reached. Next the picturesque towns of Laramie, Rawlins and Green River, pass in review. Near Laramie you will see the white peaks of the Snowy Range off to the south, and at Green River the painted buttes which rise precipitously in a thousand fantastic shapes. On you go, down through Echo Canyon, past "Devil's Slide" which is seen from the train window, and then across the fertile farmlands of Utah.

Ar. Cedar City, Utah ..... 6:30 AM      Tuesday      3rd day      Un. Pac. RR.

You will occupy your Pullman until 7:00 AM, then off for breakfast at El Escalante Hotel, just a few steps from the station. After breakfast the buses will be waiting to take you on a trip, which, for scenic beauty, has no parallel in the world.

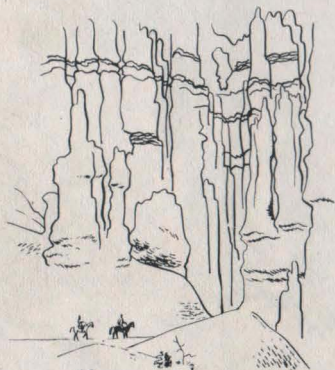
### MOTOR TOUR OF UTAH-ARIZONA WONDERLANDS

Lv. Cedar City, Utah ..... 8:30 AM      Tuesday      3rd day      Motor

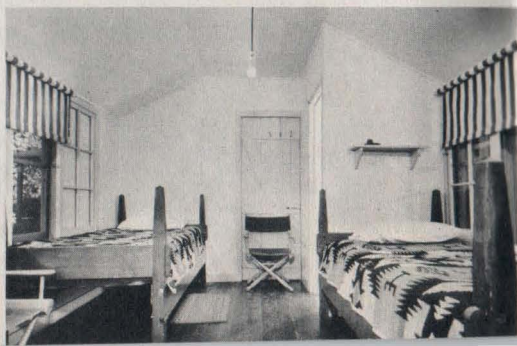
The way from Cedar City to Zion National Park is interesting for its scenery and its people. You pass through several Mormon villages, all of which still bear the marks of early-day settlement—weather-beaten houses of handhewn timbers, fenced with stone; flagstone walks hoary with age. You pass through the heart of Utah's "Dixie," so named because its climate so closely resembles that of the South. Here are grown figs, pomegranates, almonds, cotton, tobacco and the most luscious melons that ever tickled the palate. Soon the desert is left behind and the colorful mountains of the Zion country come into view.

Ar. Zion Park Lodge ..... 10:45 AM      Tuesday      3rd day      Motor

When you are settled in your comfortable cabin, it will be time for luncheon in the central lodge building. After luncheon a trip by motor to the Temple of Sinawava and a hike with the



Interior of modern standard cabin in Utah-Arizona Parks.





Ranger-Naturalist to the Narrows. You will be overwhelmed at the beauty and magnitude of this inspiring region. Entertainment, nature talk, movies, dancing, plenty of activity for the evening hours. The next day you will wish to explore some of the miles of trails—ride or hike—the East Rim, the West Rim. In the afternoon you may wish to take a refreshing dip in the pool. After another fun-filled evening, a refreshing night's rest and a morning filled with more of the scenic beauty of Zion, you prepare to take leave, right after breakfast, for the wonder of wonders—the Grand Canyon.

Lv. Zion Park Lodge ..... 9:00 AM      Thursday      5th day      Motor

On the way you pass through the famous Mt. Carmel Tunnel along the Mt. Carmel Highway, with six huge tunnel portals through which you see masterpieces of scenic beauty. Soon the cool quiet of the Kaibab Forest is reached and someone in the party sights a deer. Soon dozens of them are seen and finally you lose count. The Kaibab is also the home of the famous white-tail squirrel, found nowhere else in the world. Suddenly you are at Grand Canyon Lodge where an enthusiastic welcome awaits you.

Ar. Grand Canyon Lodge ..... 1:00 PM      Thursday      5th day      Motor

You will not want to wait to be assigned to a cabin, but off you dash for your first glimpse of the mighty Grand Canyon. Perhaps it will be from one of the large picture windows in the lounge of the Lodge, or right out on the lofty North Rim, but no matter where you get that first view of this vast abyss, you will be overwhelmed. Words cannot describe it—you must see it for yourself. You will finally pull yourself away for the formalities of getting settled and ready for a tasty luncheon in the charming Lodge dining room. That evening there will be informal entertainment, music and dancing and, perhaps, a moonlight stroll on the rim. You have all the next day and early the following morning to drink in the beauties of the Grand Canyon. You will never tire of gazing into its purple depths. You may wish to see it from outstanding vantage points

*Interior of a deluxe cabin*



like Cape Royal and Point Sublime; perhaps join a horseback party for views from other places. There will be something doing every minute of your stay.

Lv. Grand Canyon Lodge ..... 8:00 AM      Saturday      7th day      Motor

Back over the winding road, deep into the Kaibab . . . out across the plains . . . through sparkling canyons . . . past Vermilion Cliffs . . . through Red Canyon . . . then, Bryce Canyon the beautiful—like a glimpse of another world.

Ar. Bryce Canyon Lodge ..... 1:00 PM      Saturday      7th day      Motor

Sunset enlivens the myriad tints of Bryce Canyon's fragile formations and presents the towering temple peaks, the colorful sculptured depths at their best. Entertainment and dancing enliven the evenings at the Lodge. After a solid night's rest in this cool mountain atmosphere, you are up early to view Bryce under the first rays of the rising sun. Under such light the canyon presents an entirely new and different aspect. You have all day to enjoy this fairyland of form and color . . . from the rim . . . hiking down the trails with Ranger-Naturalist guided party for an absorbing explanation of the geology of the country . . . or perhaps as a member of a gay horseback party following your colorful cowboy guide around the rim and down the trails. Another delightful night at Bryce and all the next morning to drink in its unearthly beauty and take away mental pictures you will recall with pleasure for years to come. Shortly after lunch you'll pack your bags . . . take one long, lingering look at Bryce, then

Lv. Bryce Canyon Lodge ..... 2:30 PM      Monday      9th day      Motor

On the way to Cedar City a stop is made at Cedar Breaks National Monument, claimed by many to be the most colorful of the Southern Utah attractions. A vista of its tremendous formations, splashed with every color of the rainbow, will add another shock to your senses. In rustic Cedar Breaks Lodge you enjoy a hearty dinner.

Ar. Cedar Breaks Lodge	..... 5:00 PM	Monday	9th day	Motor
Lv. Cedar Breaks Lodge	..... 6:45 PM	Monday	9th day	Motor
Ar. Cedar City, Utah	..... 7:45 PM	Monday	9th day	Motor
Lv. Cedar City, Utah	..... 10:05 PM	Monday	9th day	Un. Pac. RR.
Ar. Salt Lake City, Utah	..... 4:40 AM	Tuesday	10th day	Un. Pac. RR.

*A colorful desert bloom*





At 7:30 AM you are out of your sleeper and into a waiting car which whisks you uptown to the Hotel Utah for breakfast. At 10:00 AM you are off again for a sightseeing trip of Salt Lake City and environs which ends at the historic Mormon Temple grounds at noon for a conducted tour of the site, followed by the inspiring organ recital in the Tabernacle. Luncheon at the Hotel Utah, then away to Saltair Beach on Great Salt Lake, returning to the Union Pacific Station.

Lv. Salt Lake City, Utah ..... 5:45 PM      Tuesday      10th day      Un. Pac. RR.

Your train heads for Denver as you enjoy dinner in the dining car and a restful night's sleep. Breakfast in the dining car then

Ar. Denver, Colo. .... 8:00 AM      Wednesday      11th day      Un. Pac. RR.

On leaving the train you board waiting motor buses for a delightful trip to Lookout Mountain, burial place of Buffalo Bill; a tour of Denver's Mountain Parks, through Clear Creek and Bear Creek Canyons and typical Rocky Mountain scenery to the Park of the Red Rocks for a view of the vast outdoor theatre there. Back to Denver in time for luncheon at the Cosmopolitan Hotel. The afternoon is open to do as you wish.

Lv. Denver, Colo. .... 5:00 PM      Wednesday      11th day      Un. Pac. RR.  
Ar. Omaha, Nebr. .... 4:10 AM      Thursday      12th day      Un. Pac. RR.

You will spend the morning visiting with other members of the tour and reliving the stirring events of the past two weeks. You will agree unanimously that you have just completed the outstanding scenic tour of all America. Fond farewells for all and promises to write and exchange "snaps" and movies as the Chicago skyline comes into view.

Ar. Chicago, Ill. .... 2:00 PM      Thursday      12th day      C & NW Ry.

Cost of Complete "Z" Circle Tour Including All Meals			
FROM CHICAGO, RETURNING TO CHICAGO			
	With Rail Ticket	Without Rail Ticket	
Two persons occupying lower berth, each person ....	\$284.08	\$184.93	
Tax.....	25.61	10.74	
One person occupying lower berth .....	307.33	208.18	
Tax.....	28.65	13.78	
One person occupying upper berth .....	296.23	197.08	
Tax.....	27.20	12.33	
Two persons occupying compartment, each person ...	326.19	227.04	
Tax.....	31.11	16.24	
Three persons occupying a compartment, each person	304.40	205.25	
Tax.....	28.27	13.40	
Two persons occupying drawing room, each person ..	349.13	249.98	
Tax.....	34.10	19.23	
Three persons occupying drawing room, each person..	319.69	220.54	
Tax.....	30.26	15.39	

Additional drawing room and compartment rates, also rates for children under 12 years of age quoted on application.

The above rates shown with and without railroad fare of \$99.15 plus \$14.87 Federal tax from Chicago, are based on modern standard cabins with shower at Lodges in Zion, Grand Canyon and Bryce Canyon National Parks. For rates from points east of Chicago add rail fare, plus tax, from home station to amount shown "Without Rail Ticket."

Make your reservations through any representative shown on pages 63 or 64.



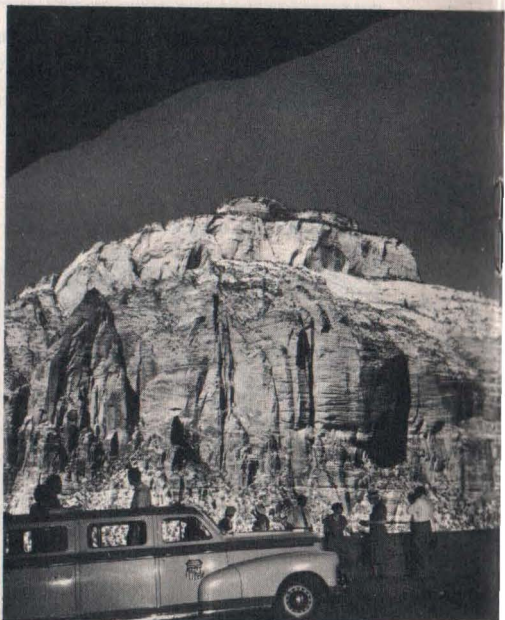
*Hiking party explores Bryce Canyon*

32

*A dip in Zion's pool*



*Through Mt. Carmel's windows*



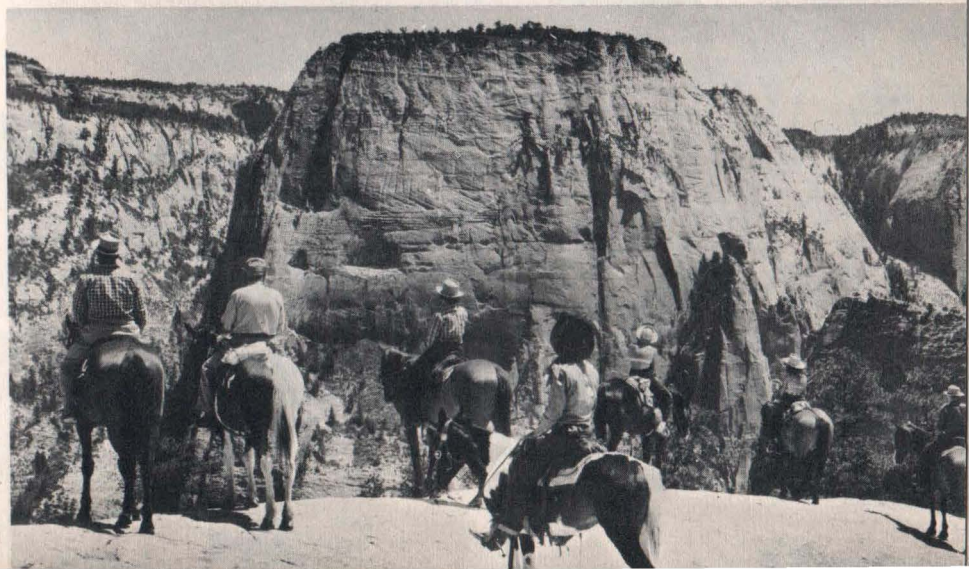




*Evening hours are filled with fun.*

33

*Horseback party views the Great White Throne.*



**YELLOWSTONE — GRAND CANYON  
BRYCE CANYON—ZION NATIONAL PARKS  
CEDAR BREAKS                  SALT LAKE CITY**

**TOUR "YZ"                  ALL EXPENSE — \$313.29                  13 DAYS**  
Plus Tax

*All Meals Are Included in the Cost.*

**TOURS LEAVE CHICAGO AT 3:30 PM ON SUNDAYS AS FOLLOWS:**

YZ-1 Sun. June 22	YZ-5 Sun. July 20	YZ- 8 Sun. Aug. 10
YZ-2 Sun. June 29	YZ-6 Sun. July 27	YZ- 9 Sun. Aug. 17
YZ-3 Sun. July 6	YZ-7 Sun. Aug. 3	YZ-10 Sun. Aug. 24
YZ-4 Sun. July 13		YZ-11 Sun. Aug. 31

**DETAILED SCHEDULE**

Lv. Chicago, Ill. .... 3:30 PM                  Sunday                  1st day                  C & NW Ry.

You are starting on a 13-day tour through some of America's most fascinating scenic regions, as well as regions containing many of Nature's strangest phenomena. You will visit four of our country's most popular national parks and one national monument . . . the great intermountain metropolis and tourist

34

*Ranger-Naturalist explains how a geyser cone is formed.*





attraction . . . Salt Lake City. You will return with a storehouse of memories to last a lifetime.

Ar. Omaha, Nebr. ....	12:40 AM	Monday	2nd day	C & NW Ry.
Lv. Omaha, Nebr. ....	12:55 AM	Monday	2nd day	Un. Pac. RR.

You are now on the Union Pacific, first railroad to unite the East with the West. You pass through historic Cheyenne, Wyoming, capital city of the State, and shortly after reach the highest point en route . . . Sherman Hill (8,013 ft.). Dinner in the dining car and a pleasant evening in the lounge car.

Ar. West Yellowstone, Mont. ...	7:30 AM	Tuesday	3rd day	Un. Pac. RR.
---------------------------------	---------	---------	---------	--------------

Breakfast in Union Pacific's dining lodge.



Mountain sheep



Pronghorn



Deer

## MOTOR CIRCLE TOUR OF YELLOWSTONE NATIONAL PARK

Lv. West Yellowstone, Mont. ...	9:30 AM	Tuesday	3rd day	Motor
---------------------------------	---------	---------	---------	-------

Comfortable buses will carry you to Old Faithful Inn, pausing en route at Riverside, Grotto, and Giant Geysers; Fountain Paint Pots, Morning Glory Pool.

Ar. Old Faithful Inn .....	11:56 AM	Tuesday	3rd day	Motor
----------------------------	----------	---------	---------	-------

Luncheon, then all afternoon to watch Old Faithful perform, and to explore this weirdest spot in the universe, either in a party conducted by a ranger of the National Park Service, or you may "go-as-you-please." In the evening you will be entertained by music—dance if you wish—join others at the Ranger-Naturalist lecture—or just relax.

Lv. Old Faithful Inn .....	8:30 AM	Wednesday	4th day	Motor
----------------------------	---------	-----------	---------	-------

On the way to Canyon Hotel you will see Kepler Cascades . . . cross the Continental Divide . . . then beautiful Yellowstone Lake . . . Fishing Cone and Thumb Paint Pots . . . Mud Geyser . . . Dragon's Mouth Spring.

Ar. Canyon Hotel .....	11:55 AM	Wednesday	4th day	Motor
------------------------	----------	-----------	---------	-------

Luncheon at the hotel and all afternoon and early tomorrow morning to view this awe-inspiring natural wonder. Dinner at the hotel, then music and dancing; perhaps a moonlight stroll along the rim before you retire to your comfortable room.

Lv. Canyon Hotel ..... 9:45 AM      Thursday      5th day      Motor

Over thrilling Dunraven Pass to Tower Falls. Beyond is The Needle, slender rock shaft extending nearly three hundred feet high. Numerous picturesque falls and mountain peaks are seen enroute.

Ar. Mammoth Springs Hotel .... 12:31 PM      Thursday      5th day      Motor

After luncheon in the attractive dining lodge you may wish to visit the vari-colored terraces or the Park museum.

Lv. Mammoth Springs Hotel .... 2:30 PM      Thursday      5th day      Motor

On the way you pause briefly for a look at Obsidian Cliff . . . Roaring Mountain . . . famed Norris Geyser Basin, alive with steam jets and bubbling pools.

Ar. West Yellowstone, Mont. ... 5:08 PM      Thursday      5th day      Motor

After dinner you board your waiting sleeping cars for the trip to Salt Lake City, the Mormon capital.

Lv. West Yellowstone, Mont. .... 7:30 PM	Thursday	5th day	Un. Pac. RR.
Ar. Ogden, Utah ..... 6:15 AM	Friday	6th day	Un. Pac. RR.
Ar. Salt Lake City, Utah ..... 7:30 AM	Friday	6th day	Un. Pac. RR.

Waiting automobiles will whisk you uptown to the Hotel Utah for breakfast. At 10:00 AM you are off again for a sightseeing trip of Salt Lake City and environs which ends at the historic Mormon Temple grounds at noon for the inspiring organ recital in the Tabernacle, followed by a conducted tour of the site. Luncheon at the Hotel Utah, then away to Saltair Beach

36



Grand Canyon Dining Room  
where fine food is enjoyed

Dining Room in  
Zion Lodge







*The evening hours pass pleasantly at Bryce Canyon Lodge.*

on Great Salt Lake. Dinner in the Starlite Gardens, atop the Hotel Utah—with its marvelous views of Salt Lake City and surrounding peaks. Cars will transfer you to the Union Station at 9:00 PM.

Lv. Salt Lake City, Utah	.....10:10 PM	Friday	6th day	Un. Pac. RR.
Ar. Cedar City, Utah	.....6:30 AM	Saturday	7th day	Un. Pac. RR.

You will occupy your Pullman until 7:00 AM, then off for breakfast at El Escalante Hotel, just a few steps from the station. After breakfast, buses will be waiting to take you on a motor tour through the Land of Flaming Canyons.

#### MOTOR TOUR OF UTAH-AZONA WONDERLANDS

Lv. Cedar City, Utah	.....8:30 AM	Saturday	7th day	Motor
----------------------	--------------	----------	---------	-------

The route from Cedar City to Zion National Park is very interesting as it recalls much of the early-day Mormon settlement of the area.

Ar. Zion Park Lodge	.....10:45 AM	Saturday	7th day	Motor
---------------------	---------------	----------	---------	-------

You will be shown to your attractive cabin on arrival and after you are settled it will be time for lunch in the lodge center. In the afternoon a trip by motor to the Temple of Sinawava and a hike with the Ranger-Naturalist to the Narrows. The scenery in this brilliantly colored canyon will inspire you. There will be entertainment—nature talk, movies, dancing—plenty of activity for the evening hours. Church services are available, early Sunday morning.

Lv. Zion Park Lodge	.....9:00 AM	Sunday	8th day	Motor
---------------------	--------------	--------	---------	-------

On the way you pass through the famous Mt. Carmel Tunnel along the Mt. Carmel Highway, with six huge tunnel portals





through which you get magnificent views of Zion National Park. After passing through Kanab and Fredonia you reach the Kaibab National Forest with its stands of ponderosa pine, Douglas fir, spruce and aspen. Then you arrive at Grand Canyon Lodge where a hospitable welcome awaits you.

Ar. Grand Canyon Lodge ..... 1:00 PM      Sunday      8th day      Motor

Words cannot describe the Grand Canyon—you must see it for yourself. You will never tire of gazing into its purple depths. Tear yourself away for a delightful luncheon in the lodge and a pleasure-filled afternoon and evening. Perhaps see the Canyon by moonlight before retiring. Another full day (Monday) to gain unforgettable impressions of this stupendous work of nature.

Lv. Grand Canyon Lodge ..... 8:00 AM      Tuesday      10th day      Motor

You leave Grand Canyon reluctantly to retrace your route back through the Kaibab Forest . . . through sparkling canyons . . . past Vermilion Cliffs . . . Red Canyon . . . then, Bryce Canyon, the incomparable.

Ar. Bryce Canyon Lodge ..... 1:00 PM      Tuesday      10th day      Motor

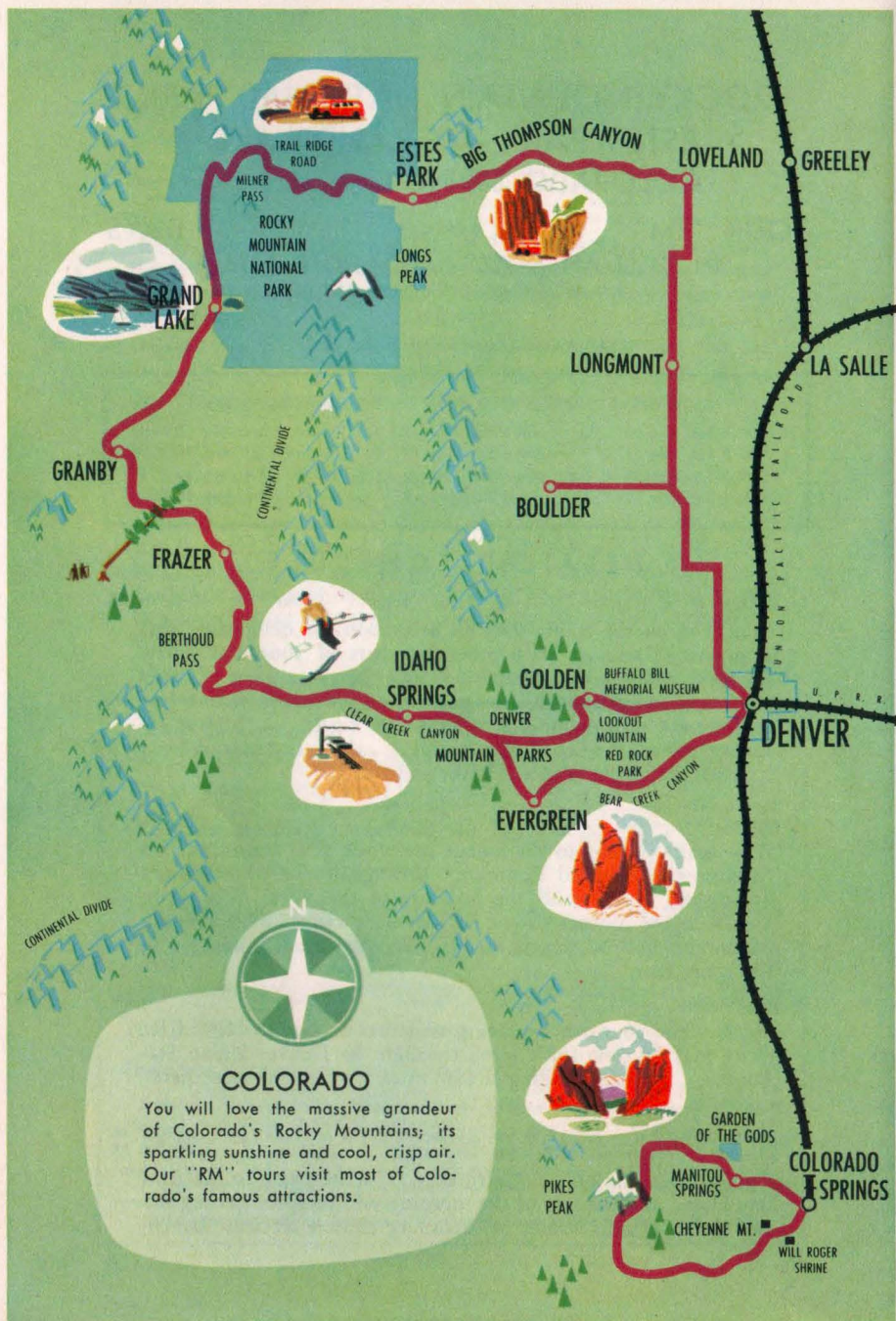
Bryce Canyon will hold you spellbound. It is a dazzling spectacle at Sunset. It is like a scene from Dante's Inferno. See it again in the early morning and you will have an entirely different picture. Hike, ride . . . around the rim or into the depths . . . and you will be enchanted.

Lv. Bryce Canyon Lodge ..... 2:30 PM      Wednesday      11th day      Motor

"Singing away" the guests at Grand Canyon

39





## COLORADO

You will love the massive grandeur of Colorado's Rocky Mountains; its sparkling sunshine and cool, crisp air. Our "RM" tours visit most of Colorado's famous attractions.



eon at the hotel, then at 1:30 PM leave by automobile for the 34-mile drive, including the beautiful residential districts of Colorado Springs; fantastic and colorful Garden of the Gods and High Mesa. You will take the thrillingly scenic drive up Cheyenne Mountain to the summit, where stands the Will Rogers Memorial Shrine. Return is by way of North Cheyenne Canon, the High Drive and Bear Creek Canon back to the Antlers Hotel for dinner and lodging. The next day (Monday) after breakfast at the hotel, automobiles leave at 8:30 AM for the 60-mile drive to the summit of venerable Pikes Peak. Dress warmly for you're going up to 14,110 feet above sea level and snow flurries and blustery winds are likely along the way. This thrilling trip will live forever in your memory. Every turn of the road brings new and breath-taking vistas. You return to the hotel for luncheon. Afternoon open. Leave hotel about 5:00 PM by motor for the Garden of the Gods where you will be served a typical western Chuck Wagon dinner and enjoy an evening of Cowboy Style entertainment under the stars.  
Breakfast Tuesday at Antlers Hotel.

Lv. Colorado Springs, Colo. .... 8:00 AM	Tuesday	4th day	D&RGW RR.
Ar. Denver, Colo. .... 9:50 AM	Tuesday	4th day	D&RGW RR.

### MOTOR CIRCLE TOUR OF ROCKY MOUNTAIN NATIONAL (ESTES) PARK

Lv. Denver, Colo. .... 10:00 AM	Tuesday	4th day	Motor
---------------------------------	---------	---------	-------

Your automobile caravan heads north through Longmont, Berthoud, and Loveland . . . Big Thompson Canyon.

Ar. Estes Park, Colo. .... 12:30 PM	Tuesday	4th day	Motor
-------------------------------------	---------	---------	-------

Pikes Peak from the Garden of the Gods

43



You are soon roomed in the Chalet-Ranch, a rambling rustic structure of great charm and offering all the comforts of a metropolitan hotel. Chalet-Ranch will be your headquarters on Wednesday and until after breakfast on Thursday morning. Ample time to hike over beautiful mountain trails. Evening hours filled with gay entertainment.

Lv. Estes Park, Colo. .... 9:00 AM      Thursday      6th day      Motor

Ahead lie charming vistas of rugged mountain grandeur on the way to Grand Lake . . . Trail Ridge Road . . . the Mummy Range . . . Iceberg Lake . . . the Continental Divide. Down Milner Pass to Grand Lake Lodge, your headquarters for an afternoon and overnight stop.

Ar. Grand Lake Lodge ..... 12:00 Noon      Thursday      6th day      Motor

After a satisfying luncheon in the delightfully rustic surroundings of the Lodge you will probably take one of the well-marked trails for a hike—perhaps down to the village on the shores of the Lake, or in the higher elevations around the Lodge. The village offers movies, dancing and entertainment nightly.

Lv. Grand Lake Lodge ..... 8:30 AM      Friday      7th day      Motor

Along the headwaters of the Colorado River to Granby; over Berthoud Pass and recross the Continental Divide. Stop at Buffalo Bill's grave atop Lookout Mountain . . . visit Pahaska Tepee Museum where mementos of his life are displayed. Back in Denver in time for luncheon at the Cosmopolitan Hotel.

Ar. Denver, Colo. .... 1:00 PM      Friday      7th day      Motor

You may join the throngs of Denver shoppers in the downtown district; attend a movie, or do as you please, but be back at the hotel in time to board the buses leaving at 4:00 P.M. for Union Station.

Lv. Denver, Colo. .... 5:00 PM      Friday      7th day      Un. Pac. RR.

After an ample dinner in the dining car you will wish to spend this last evening of the tour in the lounge car with members of

Lobby of Estes Park Chalets







Colorado state capital, Denver



Yachting on Grand Lake

your party, recalling the many happy experiences and grand sights which you have enjoyed together during the past few days.

Ar. Omaha, Nebr. .... 4:10 AM      Saturday      8th day      Un. Pac. RR.

As you bid your companions "good-by" you will marvel that so much real enjoyment and truly magnificent scenery are possible in a trip of such short duration.

Ar. Chicago, Ill. .... 2:00 PM      Saturday      8th day      C & NW Ry.

### Cost of Complete "RM" Circle Tour Including All Meals

#### FROM CHICAGO, RETURNING TO CHICAGO

#### PER PERSON, USING MODERN

	With Rail Ticket	Without Rail Ticket
RECLINING-SEAT COACH .....	\$150.65	\$104.05
Tax.....	11.95	4.96
Two persons occupying lower berth, each person ..	178.08	117.68
Tax.....	15.62	6.56
One person occupying lower berth .....	190.33	129.93
Tax.....	17.22	8.16
One person occupying upper berth .....	184.35	123.95
Tax.....	16.44	7.38
Two persons occupying bedroom, per person .....	192.74	132.34
Tax.....	17.53	8.47

Additional bedroom rates, also rates for children under 12 years of age quoted on application.

The above rates, shown with and without rail fare from Chicago, are based on \$46.60 plus \$6.99 Federal tax, when using modern, reclining seat coaches, or \$60.40 plus \$9.06 Federal tax, when using Standard Pullman. Tour cost is also based on two in a room with bath at Antlers Hotel and on two in a room without bath at Chalet-Ranch and Grand Lake Lodge in Estes-Rocky Mountain National Park. For rates from points east of Chicago add rail fare, plus tax, from home station to amount shown "Without Rail Ticket."

**Make your reservations through any representative shown on pages 63 or 64.**





# CALIFORNIA — OLD MEXICO YOSEMITE NATIONAL PARK LAS VEGAS      HOOVER DAM

**TOUR "C"      ALL EXPENSE — \$364.89      15 DAYS**

Plus Tax

*All Meals Are Included in the Cost.*

TOURS LEAVE CHICAGO AT 12:01 PM ON SATURDAYS AS FOLLOWS:

C-1 Sat. June 14	C-5 Sat. July 12	C- 9 Sat. Aug. 9
C-2 Sat. June 21	C-6 Sat. July 19	C-10 Sat. Aug. 16
C-3 Sat. June 28	C-7 Sat. July 26	C-11 Sat. Aug. 23
C-4 Sat. July 5	C-8 Sat. Aug. 2	C-12 Sat. Aug. 30

## DETAILED SCHEDULE

Lv. Chicago, Ill. .... 12:01 PM      Saturday      1st day      C & NW Ry.

Shortly after the train leaves Chicago you'll hear the call for luncheon which will be your introduction to the finest dining car meals you can imagine. Later in the lounge car you will get acquainted with other members of your party . . . perhaps indulge in a friendly game of cards, as the train speeds across Illinois and Iowa.

Ar. Omaha, Nebr. .... 9:00 PM      Saturday      1st day      C & NW Ry.  
Lv. Omaha, Nebr. .... 9:25 PM      Saturday      1st day      Un. Pac. RR.

You are now on the Union Pacific Railroad, first of the transcontinentals and along whose line are countless cities and towns rich in the lore of the building of the West. Historic Cheyenne, Wyoming in the morning, then over Sherman Hill, highest point enroute (8,013 ft.). Next come Laramie, Rawlins, Rock Springs and Green River in Wyoming . . . names which recall the wild and woolly West of another day. Down through Weber Canyon and across the fertile farmlands of Utah. You pass through Salt Lake City that evening, and shortly after leaving Salt Lake City the train skirts Great Salt Lake—the largest inland body of salt water in the world. Another pleasant evening in the lounge car and a good night's rest, followed by breakfast in the dining car.

Ar. Las Vegas, Nevada ..... 2:30 AM      Monday      3rd day      Un. Pac. RR.

Your sleeping cars will be parked near the Las Vegas depot. After breakfast at Sal Sagev Hotel you board buses for the interesting trip to Boulder City, built specifically for the men who

constructed Boulder Dam (now Hoover Dam) and on to the Dam itself. Government guides conduct your party through the Dam and powerhouses, giving informative talks about features of interest. Luncheon will be taken at Lake Mead Lodge after which the party returns to Las Vegas. Dinner and entertainment at one of the leading resort hotels in Las Vegas. Those who wish to retire early may do so, as the sleepers will be ready for occupancy at 10:00 PM.

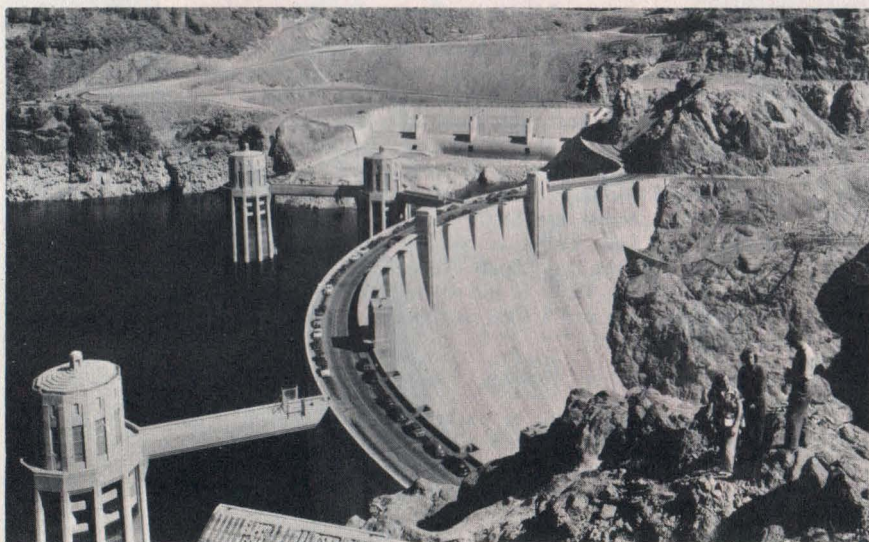
Lv. Las Vegas, Nevada ..... 2:45 AM      Tuesday      4th day      Un. Pac. RR.

When you awake in the morning you will look out of the window and catch your breath just a little at the sight of the strange new world about you . . . the waving palms . . . the tall, feathery eucalyptus . . . the long straight rows of orange, plum, walnut and avocado trees . . . the startlingly purple mountains in the background . . . everything so much more wonderful than you had pictured. You breakfast in the dining car, and

Ar. Riverside, Calif. .... 9:00 AM      Tuesday      4th day      Un. Pac. RR.

On arrival Riverside, automobiles are waiting to transfer your party to famous and beautiful Mission Inn where room with bath will be provided. You will be taken on a tour of the Inn and have an opportunity to inspect the many details of its galleries; its historic relics; its fine Spanish architecture. Mission Inn is famous the world over. Those who have their swimming suits will enjoy a dip in the pool.

Lv. Riverside, Calif. .... 8:00 AM      Wednesday      5th day      Motor







*Gala Hollywood premiere*



*Mission Inn, Riverside*

You are now off on an exciting motor tour to the South . . . through enchanting stretches of citrus groves and vineyards . . . then west over the hairpin curves of the Ortega Highway, up the east slope of the Santa Ana Mountains to James Point for a panoramic view of the Elsinore Valley, two thousand feet below . . . through San Juan Capistrano for a visit to the mission founded by Father Junipero Serra in 1776 . . . on to La Jolla, noted for the beautiful homes of its artists' colony and then on past Sunset Cliffs and Inspiration point to San Diego itself and your headquarters at the U. S. Grant Hotel in the heart of the city.

Ar. San Diego, Calif. . . . . 12:30 PM

Wednesday

5th day

Motor

After being roomed at the Hotel you will have luncheon in the main dining room of the U. S. Grant Hotel. Leave hotel at 2:00 PM by motor for a tour of Old Town, Balboa Park, National City and Chula Vista to Tijuana, Old Mexico. After visiting the quaint shops and other attractions, you will return to San Diego via the Silver Strand and Coronado, arriving back

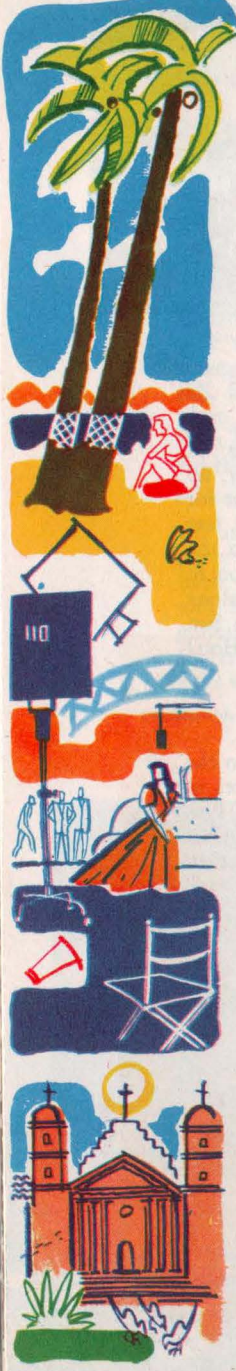
*Avalon Bay, Catalina Island*



*Typical southern California scene*







at the Hotel at 6:00 PM. After dinner at the hotel you may do as you please. Thursday morning you take breakfast at the hotel, pack your bags and

Lv. San Diego, Calif. .... 9:00 AM

Thursday

6th day

Motor

Automobiles pick you up at the hotel for another thrillingly scenic ride north through picturesque country via Mission Hills, La Jolla, Laguna Beach, famous home of artists and musicians. Stop is made at Knotts Berry Farm for a delicious luncheon, then on through Newport and Long Beach to Los Angeles.

Ar. Los Angeles, Calif. .... 5:00 PM

Thursday

6th day

Motor

You are taken direct to the Biltmore Hotel where rooms with bath are awaiting your party. After dinner at the hotel, the evening is yours to spend as you wish. Los Angeles offers a wealth of entertainment in its theatres and night clubs. Hollywood originates several nation-wide radio shows nightly. After breakfast at the hotel Friday, cars are waiting to take you to the pier at Wilmington for the never-to-be-forgotten steamer trip to Catalina Island, the "Jewel of the Pacific." After a refreshing cruise on a trim steamer you step off at beautiful Avalon Bay, a scenic paradise. There's so much to see and do here you will wish to be in two places at once. There are hiking trails, motor sightseeing trips around the Island; an afternoon organ concert at the Casino Theatre; fascinating Bird Park where there are thousands of birds from every corner of the earth; speed-boat trips around the Bay, or a view of the Submarine Gardens from the famed glass-bottom boats, a fantastic underwater world of fascinating marine plant and animal life. You have luncheon on Catalina Island overlooking beautiful blue Avalon Bay and Yacht Harbor. All too soon it is time to return, and after a fast steamer and automobile trip you are back at the Biltmore Hotel for dinner at 7:30 PM.

Saturday morning left open for resting, shopping or independent action. After luncheon you leave the Biltmore Hotel at 2:00 PM by motor for a very interesting tour which includes a view of the Downtown Shops, Westlake Park, Wilshire District, Windsor Square, Hollywood Motion Picture and Radio Studios, Hollywood Boulevard, the smart "Sunset Strip", Beverly Hills homes of the movie stars and celebrities, Westwood, site of the University of California at Los Angeles, Bel-Air Estates, the Riviera, Will Rogers' estate, the Pacific Ocean and millionaires' homes along the beach at Santa Monica from the Palisades.

The next day, Sunday, is reserved for going to church, visiting and independent sightseeing. Breakfast and luncheon are provided for at the Hotel but the price of any of the meals, for



which you have coupons, will be refunded you by the hotel cashier should you care to eat somewhere else. Cars will be waiting at 4:50 PM (PST) to take you to the Union Terminal.

Lv. Los Angeles, Calif. ....	5:40 PM (PST) Sunday	9th day	So. Pac. Lines
Ar. Fresno, Calif. ....	6:30 AM (PST) Monday	10th day	So. Pac. Lines

Motor buses are waiting to transfer you to Hotel Californian for breakfast. Immediately after breakfast you leave by motor for the tour of Yosemite National Park.

#### MOTOR TOUR OF YOSEMITE NATIONAL PARK

Lv. Fresno, Calif. ....	8:00 AM (PST) Monday	10th day	Motor
-------------------------	----------------------	----------	-------

Your route is through California's largest vineyards and into the Sierra en route to Mariposa Grove of Big Trees where you get your first view of the Sequoias. They are the earth's oldest and largest living things. It is impossible to describe the feeling that comes over you as you look up at these mighty monarchs of the forest, some thirty feet thick, three hundred feet high and with an estimated age of more than 3,800 years. Six hundred trees comprise the Grove. You drive through the Wawona (Tunnel) Tree and may walk along the Fallen Monarch. After luncheon at Big Trees Lodge you ride in the shadows of



An impressive stand of big trees

the towering granite peaks of the valley en route to the Ahwahnee Hotel, your headquarters.

Ar. Yosemite Valley ..... 3:00 PM (PST) Monday 10th day Motor

En route you will see the many natural wonders of Yosemite, and what beauties they are! This is scenic grandeur unsurpassed anywhere . . . huge granite domes . . . feathery waterfalls . . . mighty cataracts . . . these are the properties of Yosemite. There's Half Dome, which for eons of time has looked down upon the Valley . . . Bridal Veil Falls with its delicate spray . . . Yosemite Falls, the highest in the world, with a total drop of 2,555 feet . . . El Capitan, rising a sheer 3,605 feet from the Merced River and eternally guarding the west entrance to the valley. Spend the balance of the afternoon and early evening enjoying these marvels of nature.

After a hearty dinner at the Ahwahnee Hotel you will select a good vantage point from which to see the weird fire-fall pour over the precipice at Glacier Point. Truly a day of surprises as well as unforgettable, treasured memories.

On Tuesday you may wish to hike to the Park Headquarters, visit the Park Museum, or accompany a Park Ranger-Naturalist on a hike. Others may just wish to lounge on the veranda of the Ahwahnee and enjoy the beauty all around them.

Lv. Yosemite Valley ..... 2:00 PM (PST) Tuesday 11th day Motor

Motor through the Wawona Tunnel to Chinquapin then onward and upward to Glacier Point, 3,254 feet above the Valley, presenting a breath-taking panorama of snow-tipped High Sierra peaks. After dinner at Glacier Point Hotel, your party takes a last, farewell look at Yosemite and

Lv. Glacier Point .....	6:00 PM (PST) Tuesday	11th day	Motor
Ar. Fresno, Calif. ....	8:30 PM (PST) Tuesday	11th day	Motor
	(Sleeping cars open at 9:30 PM Tuesday)		
Lv. Fresno, Calif. ....	2:15 AM (PST) Wednesday	12th day	So. Pac. Lines
Ar. Oakland, Calif. ....	6:40 AM (PST) Wednesday	12th day	So. Pac. Lines

San Francisco-Oakland Bay Bridge







*Colorful Fisherman's Wharf and Coit Tower*

You have breakfast on the train before arrival Oakland, and go immediately to your waiting automobiles for the thrilling trip around Lake Merritt in Oakland thence over the far-flung San Francisco-Oakland Bay Bridge to San Francisco, where you continue on the Thirty-Mile Drive. This is one of the most scenic city drives in America, taking in Twin Peaks for a magnificent view of the city, bay and ocean . . . through Golden Gate and Lincoln Parks . . . then to world-renowned Cliff House, overlooking Seal Rocks and the Pacific for luncheon. The return takes you past the approach of the Golden Gate Bridge, through the Presidio and back to your headquarters, the Palace Hotel, where room with bath is awaiting you. The rest of the afternoon is open, permitting you to stroll through the department stores and smart shops of the city, or the gift shops and imported goods stores of Chinatown. All are fascinating and you will leave reluctantly to return to the hotel. Dinner at the Palace Hotel.

Breakfast at Palace Hotel Thursday. Transfer from hotel to Ferry Station at 10:00 AM (PST).

Lv. San Francisco, Calif. . . . . 11:00 AM (PST) Thursday	13th day	So. Pac. Lines Ferry
---	----------	-------------------------

Across the broad expanse of San Francisco Bay by ferry. Perhaps the fog will be rolling in and the Bay will resound to the blasts of fog horns. Under the towering San Francisco-Oakland Bay Bridge, whose sodium-vapor lights of orange-yellow

give it a festive appearance; then into the pier at Oakland where your train is waiting to take you back home.

Lv. Oakland, Calif. .... 11:30 AM      Thursday      13th day      So. Pac. Lines

Luncheon and dinner in the dining car. You will wish to spend the afternoon in the lounge car viewing the beautiful scenery in the high Sierra, then down the eastern slope and across the painted desert of Nevada. Early the following morning you will enjoy the rare and thrilling sensation of "going to sea by rail"—crossing Great Salt Lake.

Ar. Ogden, Utah ..... 6:25 AM      Friday      14th day      So. Pac. Lines  
Lv. Ogden, Utah ..... 6:55 AM      Friday      14th day      Un. Pac. RR.

Later in the morning you will be in western Wyoming, retracing the route of your westbound trip. There will be leisurely meals in the dining car and pleasant hours in the lounge as your train speeds across Nebraska.

Ar. Omaha, Nebr. .... 3:20 AM      Saturday      15th day      Un. Pac. RR.

After an enjoyable breakfast and lunch in the dining car, the last leg of the journey is completed and you are back in Chicago where this memorable tour started. There will be promises to correspond as your party prepare to go their separate ways.

Ar. Chicago, Ill. .... 1:00 PM      Saturday      15th day      C & NW Ry.

### Cost of Complete "C" Circle Tour Including All Meals

#### FROM CHICAGO, RETURNING TO CHICAGO

	With Rail Ticket	Without Rail Ticket
Two persons occupying lower berth, each person . . . .	\$364.89	\$237.34
Tax.....	32.64	13.51
One person occupying lower berth . . . . .	394.76	267.21
Tax.....	36.53	17.40
One person occupying upper berth . . . . .	380.56	253.01
Tax.....	34.68	15.55
Two persons occupying compartment, each person . . .	419.37	291.82
Tax.....	39.74	20.61
Three persons occupying compartment, each person ..	391.25	263.70
Tax.....	36.08	16.95
Two persons occupying drawing room, each person..	448.52	320.97
Tax.....	43.55	24.42
Three persons occupying drawing room, each person..	410.69	283.14
Tax.....	38.61	19.48

Additional drawing room and compartment rates, also rates for children under 12 years of age quoted on application.

The above rates, shown with and without railroad fare of \$127.55 plus \$19.13 Federal tax from Chicago (including side-trip from Las Vegas to Hoover Dam-Lake Mead and return) are based on double room with bath at all hotels. For rates from points east of Chicago add rail fare, plus tax, from home station to amount shown "Without Rail Ticket."

**Make your reservations through any representative shown on pages 63 or 64.**



# BARGAIN CALIFORNIA TOURS

## OLD MEXICO      YOSEMITE NATIONAL PARK

## LAS VEGAS          HOOVER DAM

### TOUR "BC"    ALL EXPENSE — **\$234.13** Plus Tax    13 DAYS

IN RECLINING-SEAT COACH

*All Meals Are Included in the Cost.*

TOURS LEAVE CHICAGO AT 12:01 PM ON SUNDAYS AS FOLLOWS:

BC-1 Sun. June 15	BC-4 Sun. July 13	BC-6 Sun. July 27
BC-2 Sun. June 29	BC-5 Sun. July 20	BC-7 Sun. Aug. 10
BC-3 Sun. July 6		BC-8 Sun. Aug. 24

## DETAILED SCHEDULE

Lv. Chicago, Ill. .... 12:01 PM      Sunday      1st day      C & NW Ry.

Shortly before noon you board your train for the beginning of what is sure to be one of the finest vacations you've ever taken. Both luncheon and dinner are served in the Dining Car, and by the time evening has come you will have made the acquaintance of other members of your tour party.

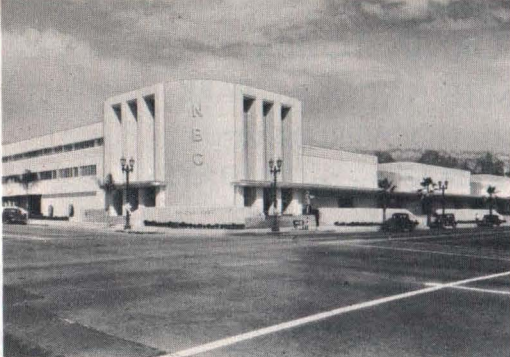
Ar. Omaha, Nebr. .... 9:00 PM      Sunday      1st day      C & NW Ry.  
Lv. Omaha, Nebr. .... 9:25 PM      Sunday      1st day      Un. Pac. RR.

After a restful night in your deep-cushioned, reclining coach seat, you have the pleasant experience of a daylight ride through

*The stately Golden Gate Bridge*

55





*The NBC and CBS radio studios in Hollywood*

that part of the West where not so long ago buffaloes roamed and hardy pioneers staked claims and fought the redman.

Ar. Salt Lake City, Utah ..... 5:50 PM      Monday      2nd day      Un. Pac. RR.

Another night of relaxation and sleep in your comfortable, reclining seat.

Ar. Las Vegas, Nev. .... 6:55 AM      Tuesday      3rd day      Un. Pac. RR.

After breakfast, trip is made by motor to famous Hoover Dam, where you will be conducted through the immense power houses by Government Guides. On one side of the dam you are in Nevada and on the other in Arizona. Then on to Lake Mead, created by impounding of the waters of the Colorado River and to Lake Mead Lodge for luncheon. Room with bath will be provided at the Last Frontier Hotel and you will also have dinner and an excellent floor show there. Those who have their bathing suits can take a dip in the pool, or view the many other attractions. You will have to be up early on Wednesday, as transfer will be made to the station at 6:30 AM.

Lv. Las Vegas, Nev. .... 7:10 AM      Wednesday      4th day      Un. Pac. RR.

Breakfast and luncheon in the dining car. Shortly after leaving Las Vegas you will cross the California border—passing through Afton Canyon, Cajon Pass and the beautiful citrus grove regions around San Bernardino and Riverside.

Ar. Los Angeles, Cal. .... 3:00 PM      Wednesday      4th day      Un. Pac. RR.

Transfer to the Alexandria Hotel where room with bath will be provided. Dinner at the hotel.

Thursday morning open to rest—or for independent action. All meals provided at the hotel. At 2:00 PM you will make a very interesting sight-seeing tour by motor through the downtown shopping center; Westlake Park; Wilshire District; Windsor Square; fascinating Hollywood and its motion picture and radio studios; Beverly Hills, where many movie stars and celebrities have their homes; Westwood, site of the University of California at Los Angeles; Bel Air Estates; Brentwood; the Riviera and its country clubs and polo fields; Will Rogers' Estate; the



Pacific Ocean and palatial homes along the beach at Santa Monica.

On Friday morning you have an early breakfast at hotel and then transfer to Union Station.

Lv. Los Angeles, Cal. .... 8:00 AM      Friday      6th day      AT & SF RY

Your train is the popular Streamliner "San Diegan" and you pass through such interesting towns as Orange, Capistrano, Santa Ana, Oceanside and Del Mar.

Motor bus meets you on arrival and takes you to Tijuana, Old Mexico, going via the U.S. Navy Repair Base, National City and Chula Vista. Luncheon at Serena's and time for visiting the quaint shops and other attractions across the border. Return is via the Silver Strand and Coronado.

Lv. San Diego, Cal. .... 3:15 PM      Friday      6th day      AT & SF RY  
Ar. Los Angeles, Cal. .... 6:00 PM      Friday      6th day      AT & SF RY

Transfer to Alexandria Hotel for dinner, lodging and breakfast.  
Transfer to Station at 5:45 AM (PST) on Saturday.

Lv. Los Angeles, Cal. .... 6:20 AM(PST) Saturday      7th day      Sou. Pac. Lines

Another memorable day. Comfortably seated on the San Joaquin Valley "Daylight" Streamliner, you ride over the Tehachapi Pass, glide through Bakersfield and Fresno.

Ar. Merced, Cal. .... 2:17 PM (PST) Saturday      7th day      Sou. Pac. Lines

#### MOTOR TOUR OF YOSEMITE NATIONAL PARK

Journeying via spectacular Merced Canyon, you arrive at

*Yosemite . . . one of our most beautiful National Parks*

57



Yosemite Valley at 6:00 PM. Headquarters are at Camp Curry. Dinner is served here.

Sunday, all day, at Camp Curry. The urge to hike around the floor of the valley will prove irresistible. The stupendous cliffs are broken by gorgeous waterfalls, among them Yosemite Falls, the highest in the world. Its silvery spray falls like a delicate fabric from a height of 2,565 feet!

Monday morning still finds you at Camp Curry, as indeed it should. Who could ever tire of such magnificent sights as Half Dome, Bridal Veil Falls, El Capitan!

Lv. Yosemite Valley, Cal. ....	11:35 AM (PST) Monday	9th day	Motor
Ar. Merced, Cal. ....	2:00 PM (PST) Monday	9th day	Motor
Lv. Merced, Cal. ....	2:17 PM (PST) Monday	9th day	Sou. Pac. Lines

Dinner in the Dining Car on the San Joaquin "Daylight."

Ar. Oakland Pier, Cal. ....	5:50 PM (PST) Monday	9th day	Sou. Pac. Lines
Ar. San Francisco, Cal. ....	6:20 PM (PST) Monday	9th day	Sou. Pac. Ferry

By motor you go directly from the station to your San Francisco headquarters, the Stewart Hotel. Rooms with bath.

Tuesday morning you board motor bus for the "Thirty Mile" Drive, one of America's most scenic. It includes Civic Center, Mission Dolores, Golden Gate and Lincoln Parks, Ocean Beach, Seal Rocks, Cliff House and the business and residential districts of San Francisco. Afternoon and evening open for shopping, visiting or independent sightseeing.

Wednesday you begin your homeward trek.

Lv. San Francisco, Cal. ....	11:00 AM (PST) Wednesday	11th day	Sou. Pac. Ferry
Lv. Oakland Pier, Cal. ....	11:30 AM (PST) Wednesday	11th day	Sou. Pac. Lines

The popular Overland Limited is your train and will be until you reach Chicago. All meals are served in the Dining Car. The daylight ride through Oakland, Berkeley, Sacramento, Truckee and Reno will be most interesting; Donner Lake and the American River Canyon are delightful "extras." Before you arrive in Ogden, you "go to sea by rail," over Great Salt Lake.

Ar. Ogden, Utah ....	6:25 AM	Thursday	12th day	Sou. Pac. Lines
Lv. Ogden, Utah ....	6:55 AM	Thursday	12th day	Un. Pac. RR.

Your scenic menu consists of rugged formations—the Wasatch Mountains, Devil's Slide, Uintah and Rocky Mountains. At Creston you cross the Continental Divide.

Ar. Omaha, Nebr. ....	3:20 AM	Friday	13th day	Un. Pac. RR.
-----------------------	---------	--------	----------	--------------

You are nearing the end of your stimulating vacation tour; you have traveled thousands of happy, scenic miles; you have visited strange, exciting places; you have won many new friends.

Ar. Chicago, Ill. ....	1:00 PM	Friday	13th day	C & NW Ry.
------------------------	---------	--------	----------	------------

### Cost of Complete "BC" Circle Tour Including All Meals

FROM CHICAGO, RETURNING TO CHICAGO

PER PERSON, USING AIR-CONDITIONED

MODERN RECLINING-SEAT COACH.....\$234.13 \$142.88

Tax..... 18.94 5.25

Rates for children under 12 years of age on application.

The rates shown above, with and without railroad fare of \$91.25 plus \$13.69 Federal tax from Chicago (including side-trip from Las Vegas to Hoover Dam-Lake Mead and return) are based on double room with bath at all hotels and double room without bath at Camp Curry. For rates from points east of Chicago, add rail fare, plus tax, from home station to amount shown "Without Rail Ticket."

Make your reservations through any representative shown on pages 63 or 64.



## TRAIN TRAVEL IS ALWAYS COMFORTABLE AND RELAXING

• • • •



The minute you step aboard you can forget summer's heat in pleasant air conditioned surroundings. You can dine leisurely in an attractive Dining Car where a choice of skillfully prepared fresh foods tempt your appetite.

Many pleasant moments may be spent with your congenial tour companions in Lounge or Club Cars. Current magazines and radio add to your enjoyment.

59



# GENERAL INFORMATION



**All Tours Escorted All the Way.** All details are arranged in advance and are carried out by our representative, your escort, with the party.

**Rates for Children** under twelve years of age will be furnished upon request. They are entitled to half-fare railroad transportation and various other reductions in tour privileges.

**Women Traveling Alone** are sometimes reluctant to take an extended vacation trip. Our Escorted Tours offer an opportunity to bridge this difficulty and they can enjoy the trip of a lifetime. They will be introduced to other members of the party and will feel "at home," among friends from the outset.

**Dining Car Meals** Coupons having a value of \$1.50 for breakfast; \$2.00 for luncheon, and \$2.50 for dinner, are provided for dining car meals, and a refund in cash is made at time of service if the meal check is less than the value of the meal coupon. (On BC tour dining car meal coupons are valued at \$1.25, \$1.75 and \$2.25.)

**Air Conditioning** Tour parties travel on trains that are air-conditioned throughout.

**Hotels and Lodges** in all National Parks are under the jurisdiction of the National Park Service, Department of the Interior, who desire that all visitors to the Parks be accommodated. Consequently, single rooms are not always available.

In **Yellowstone** tour rates are based on double occupancy of standard rooms, **without** bath, at hotels. In the **Utah-Arizona National Parks** rates are based on double occupancy of modern standard cabins, **with shower**. In **Rocky Mountain National-Estes Park** tour rates are based on double occupancy of standard rooms, **without** bath. Rooms **with** bath are usually available in these Parks, if arranged for in advance, at additional charges, based on double occupancy, as follows:

In Yellowstone .....\$1.50 and \$2.00 per day, per person  
In Utah-Arizona Parks ....\$1.00 per day, per person for Deluxe cabin  
In Rocky Mountain National-Estes .....\$1.00 per day, per person  
In Yosemite—Camp Curry .....\$1.50 per day, per person

When passengers request reservations of DeLuxe rooms **with** bath in Yellowstone, Rocky Mountain or the Utah-Arizona Parks, the Department of Tours will gladly ask for such accommodations; however, *the additional charge involved must be paid by the passenger direct to each hotel.*



In **Yosemite National Park** tour rates are based on double occupancy of rooms, **with** bath, at the Ahwahnee Hotel on the "C" tour, and on double occupancy of rooms without bath at Camp Curry on the "BC" Tour.

**At ALL Hotels outside National Parks** rooms **with** bath will be provided at all hotels where overnight stops are made and rates are based on double occupancy of rooms. Single rooms **with** bath will be arranged for any passenger desiring them; however, *the additional charge involved must be paid by the passenger direct to each hotel.*

**Baggage** Trunks are unnecessary. A suit case or bag will hold sufficient clothing for your entire trip. The Department of Tours will pay for all service in connection with the handling of baggage at stop-over points.

One piece of baggage, weighing not more than twenty-five pounds, will be carried free by the automobiles in the National Parks. If it is desired you may also carry a small overnight bag with you. Additional baggage may be checked free at park gateways. The Department of Tours assumes no responsibility for baggage or personal effects, but in the event of damage, delay or loss, will do all in its reasonable power to lessen the hardships incurred. Upon departure from Chicago your escort will furnish you with special baggage tags, bearing your name and address. Be sure to attach one tag to each of your pieces of luggage which you desire the escort to handle.

**Wearing Apparel** Warm summer days suggest lightweight clothing, yet the cool, invigorating nights in the mountains make medium-weight wraps necessary—top coats, sweaters, weatherproof outer garments. Outing clothes, slacks, jackets, or sport clothes are a comfort in the Parks, and take along low-heel walking shoes, preferably old ones as they are liable to become scuffed. A pair of colored glasses will be invaluable.

**Church Services** Your escort will be fully informed regarding church services at places visited on Sunday—special arrangements have been made at various points.

**Mail and Telegrams** should be addressed to the various hotels shown in the itinerary of the tour you are taking. Specify "Member of C&NW-Un. Pac. Tour YZ-5" or whatever the particular designating letter and number may be. The post office address of all hotels in Yellowstone Park is "Yellowstone National Park, Wyoming." In the Utah-Arizona Parks addresses are as follows: Bryce Canyon National Park Lodge, Bryce Canyon Post Office, Utah; Zion National Park Lodge, Zion National Park Post Office, Utah; Grand Canyon Lodge, North Rim Post Office, Arizona; El Escalante Hotel, Cedar City, Utah; Estes Park Chalet-Ranch, Estes Park, Colo., Grand Lake Lodge, Grand Lake, Colo.

**How to Join Our Tours** Persons desiring to join one of our tours should send their names to be registered as early as possible. Simply fill in the reservation blank at bottom of page 63 and mail to any office listed on pages 63 or 64, being particular to supply all the information requested

on the blank. Reservation will then be made. Remittance should be made not later than ten days before departure of tour, but when this is inconvenient, we will, upon request, hold reservations longer. Persons prevented from going may procure refund in full, provided Pullman reservations are cancelled before noon the Friday prior to departure from Chicago of the tour on which they hold reservations.

**Passengers Joining Tours at Chicago Must Check in at Tour Window,** ground floor Chicago & North Western Railway Terminal, Canal and Madison Streets, Chicago, Ill., at time indicated on back of your membership coupon book. Here you will meet your escort and receive a copy of the "personnel" of the tour. If joining at some point other than Chicago, look for your escort on the train as soon as possible, as he will also be on the lookout for you.

**Personal Service** Representatives of the Department of Tours, the Chicago & North Western Railway, and the Union Pacific Railroad, are prepared to assist you in every way—supplying detailed information, making reservations, and booking passengers for the tours. If you desire, a representative will call at your home or office, at your convenience, to assist with your travel plans. There is no charge for this service—it's just part of our friendly service. Feel free to write or phone any office listed on pages 63 or 64 for any information or assistance you may need.

**Purchase Railroad Tickets at Your Home Station** Passengers coming from points other than Chicago may join our tour parties at Chicago or at any regular stopping point en route between Chicago and Omaha. To obtain full benefit of the round trip fares, railroad tickets should be purchased from home station, reading via the route of the tour, as shown in the itinerary.

**Responsibility** In the sale of these tours the Department of Tours acts only as agent for the various hotels, transportation companies, railroads, etc., and assumes no responsibility for loss or damage to baggage or injury to persons. Rates, train schedules and arrangements quoted herein are subject to such change as tariff or operating requirements, which cannot be foreseen at time this book is issued, may later demand. Pullman sleeping cars used on our tours are operated by the Pullman Company under contract and our representatives act merely as agents for the Pullman Company.

*The right is reserved to decline to accept or retain any person as a member of these tours at any time.*

ALL RATES AND SCHEDULES SHOWN HEREIN SUBJECT TO CHANGE.

## COMBINATION TOURS

Several of the tours can be combined, if desired, in order to cover more territory and spend a greater length of time in the West. For example, the "YT" tour can be combined with the "YZ" in order to visit the Grand Teton, Yellowstone and Utah-Arizona Parks. The "Z" and "C" tours can be combined, to make a three-week vacation. Representatives shown on page 63 or 64 can give you complete information concerning various combinations which are available.



Tear or Cut Along Dotted Line

## APPLICATION FOR RESERVATION

Dear Sir:

City

State

Parties listed below wish to join tour \_\_\_\_\_ leaving Chicago \_\_\_\_\_

(Insert tour designation)

(Date)

NAME

STREET ADDRESS

CITY

STATE

Names and ages of any minors listed above \_\_\_\_\_

Will require Pullman space as indicated: (Show number of berths desired)

☐ Lower berth

☐ Compartment

☐ Coach Seat

☐ Upper berth

☐ Drawing room

☐ \_\_\_\_\_

When two or more in party, state how members wish to be assigned to Pullman and hotel or lodge accommodations \_\_\_\_\_

Remarks \_\_\_\_\_

Name \_\_\_\_\_

Address \_\_\_\_\_

City \_\_\_\_\_

Zone \_\_\_\_\_

State \_\_\_\_\_

(Fill out and mail to any representative listed above or on page 64)

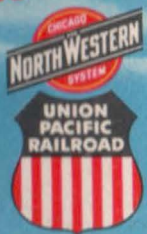
**HARRY G. MARSH**  
City Passenger Agent, C. & N. W. Ry.  
201 South Blair Street  
MADISON, WISCONSIN





# SUMMER TOURS

1952



UNION PACIFIC • NORTH WESTERN