

# SUMMER TOURS



*YELLOWSTONE  
ZION · BRYCE  
GRAND CANYON  
ROCKY MOUNTAIN  
CALIFORNIA  
COLORADO*

S E A S O N 1 9 3 3



*Chicago & North Western Ry.  
Union Pacific System*





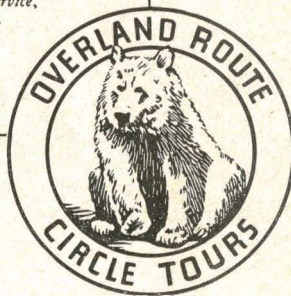


THE development of travel facilities to and in the national parks has reached the stage where the railroads, the operators of hotel, transportation, and other facilities within the parks, and the National Park Service of the Federal Government co-operate in insuring visitors the best possible results from a visit to the national parks in a minimum of time.

Especially interesting is the conducted tour, a form of railroad service which entirely frees those using it from responsibility. This form of traveling is particularly recommended for people traveling alone and for those making their first trips into the parks.

Whether only for transportation, for the planning of transportation and park visits and purchasing of tickets therefor, or for the conducted tour, I can not too strongly recommend the service provided by the railroads. Train travel in these days of modern, luxurious equipment is a restful prelude to a national park vacation.

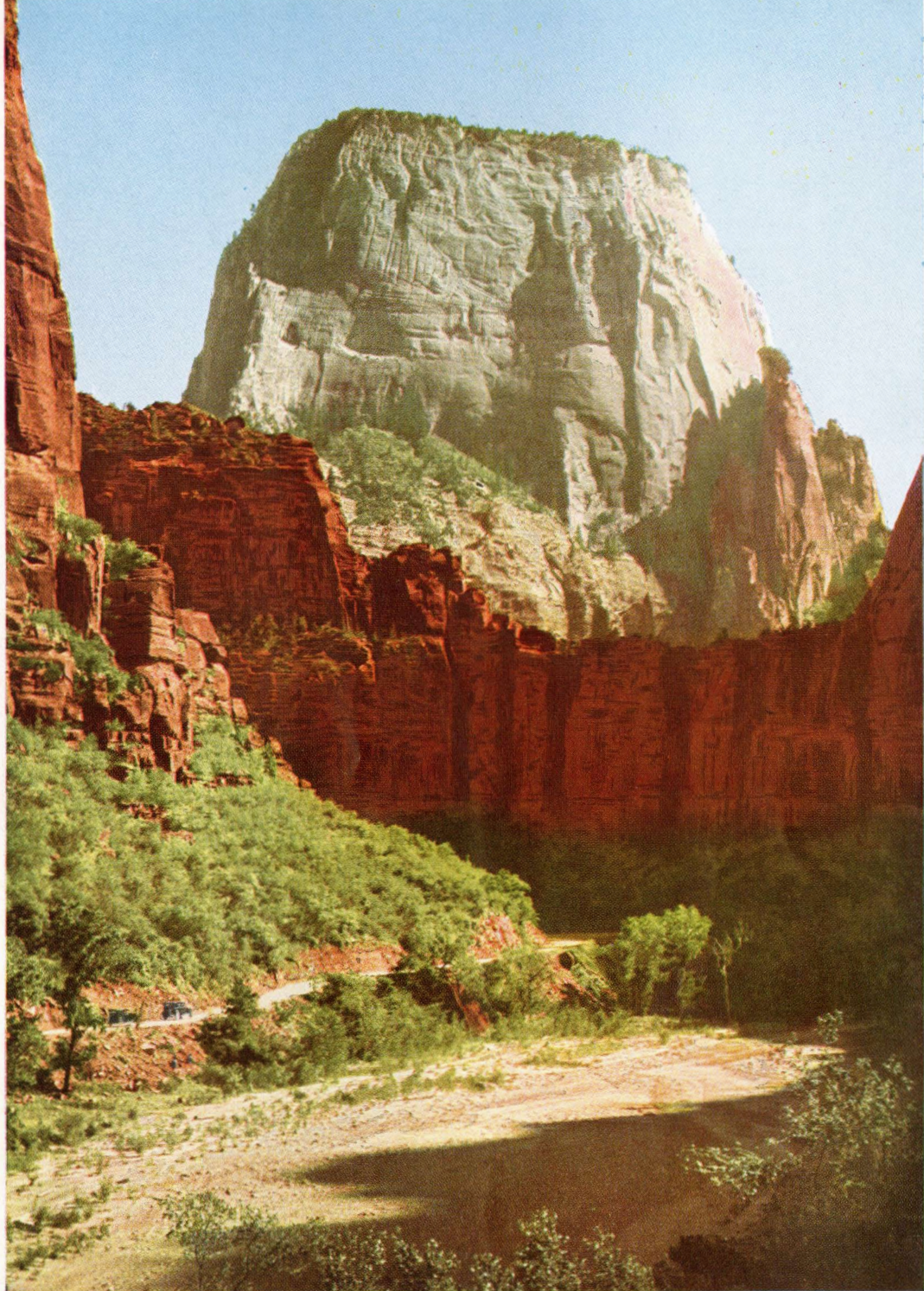
*Arna M. Allison*  
Director, The National Park Service,  
Department of the Interior.  
Washington, D. C.



SEASON 1933

Copyright 1933 by  
JOHN C. POLLOCK, *Manager*  
DEPARTMENT OF TOURS  
CHICAGO & NORTH WESTERN RAILWAY  
UNION PACIFIC SYSTEM  
Chicago





Natural Color Photograph

Zion's Colossal Great White Throne

With all its great magnitude and austere majesty, Zion National Park is permeated with an atmosphere of friendliness and quiet dignity that endears it to all who visit here



## IN THIS BOOK

What Is a Vacation? . . . . .	4
.. An All-Expense, Escorted Tour Vacation? . . . . .	5-6
A Century of Progress Exposition—Chicago . . . . .	6
TOUR Y—Yellowstone-Salt Lake City . . . . .	7 to 11
TOUR YRG—Yellowstone-Salt Lake City-Royal Gorge-Colorado Springs-Denver . . . . .	12 to 16
Rocky Mountain National Park Extension Trips . . . . .	17
TOUR YZ—Yellowstone-Zion-Bryce-Grand Canyon-Cedar Breaks- Salt Lake City-Denver . . . . .	19 to 23
TOUR Z—Zion-Bryce-Grand Canyon-Cedar Breaks-Salt Lake City- Denver . . . . .	27 to 30
TOUR ZRG—Zion-Bryce-Grand Canyon-Cedar Breaks-Salt Lake City- Royal Gorge-Denver . . . . .	31 to 35
TOUR C—California-Old Mexico-Yosemite . . . . .	37 to 41
Colorado "Specials" . . . . .	42-43
Information and Suggestions . . . . .	44 to 46
Independent All-Expense Vacations . . . . .	45
Ticket and Information Offices . . . . .	46-48
Reservation Blank . . . . .	Opposite Back Page

### The Color Illustrations in this Book

"Photographs tell the Truth." Photographs in Natural Color show the living colors as they actually are.

Thanks to Color Photography, the Department of Tours is enabled to present nature's masterpieces in the western wonderlands just as the eye sees them.

Each of the sixteen color illustrations in this book is reproduced from a "Natural Color Photograph." Each accurately portrays the beauty of its subject with true fidelity.

*"Beauty is truth—truth beauty . . ."*—KEATS





# What is a VACATION?

A CHANCE to break away from everything about us, . . . forget responsibilities, worries, . . . banish monotony and the routine of our everyday life. A vacation is all of that and more.

It's an opportunity for seeing the most interesting sights of the world . . . an educational and cultural experience that can't be duplicated by staying at home.

But above everything else, after all is said and done, what you really want on a vacation is recreation. Perhaps sports, congenial companionship, gaiety, but in any event, a good time!

Nor are your vacation pleasures confined to the few fleeting days assigned to you as a definite holiday period . . . a week, two weeks, a month or more. Actually, the pleasure starts with anticipation the minute you begin to make your plans . . . thrills multiply as you wave good-bye and start away . . . when you settle down in complete, carefree comfort on a speeding train . . . when you arrive promptly in the regions of your choice. And when your holiday period ends, as all vacations must, if you have planned wisely, invested cautiously, you have something that will remain with you always.



The problem of this summer's vacation is more important than ever before. No common-place, near-home holiday can repair the strain of recent months . . . fit you for the tasks and opportunities ahead. You need a far-away outing . . . a restful, healthful outing . . . without a care . . . with nothing to worry about or even think about except to enjoy to the utmost every precious minute at your disposal.



Go West! Get out into the mountains . . . forget yourself in the midst of the scenic grandeur of Nature's wonderlands . . . where you can do as you please, when you please, as much as you please . . . in a tonic atmosphere that will fill you with new vigor and vitality . . . return you to your tasks a new being, with new viewpoints, new vision.

Let us help you make the most of your vacation, this year.





# ...An All-Expense, Escorted TOUR VACATION?

**F**IRST of all, and most important, it's one sure way of combining *all* the requisites for a perfect vacation . . . assuring yourself that every hour of your holiday period may be devoted exclusively to sheer enjoyment.

Every detail of your trip is arranged and carried out for you. All reservations are made in advance . . . Pullman, hotel, meal service, motor trips, sightseeing trips, entertainment.

You know when you leave home exactly what your entire vacation outing will cost, and . . . because of the wholesale buying power of the two great railroads sponsoring these tours, you are assured of paying the most reasonable rates for the accommodations you desire.

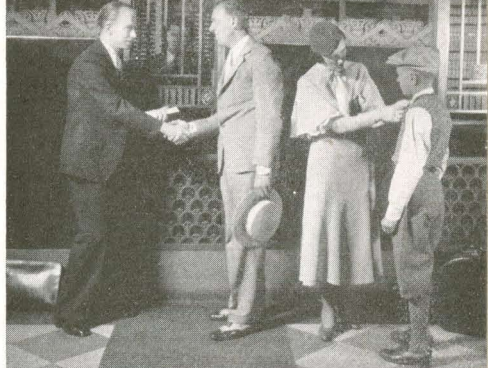
A courteous and thoroughly competent escort accompanies you all the way to relieve you of every travel care. You'll meet him when you step up to the ticket window to "check in" before your party leaves Chicago.

He takes charge of your tickets . . . assumes the responsibilities of checking them with the conductors along the line. And your baggage—you can forget you ever had any. Your escort looks out for its handling on the entire trip.

At all hotels and lodges, your escort registers for the entire party. No standing in line waiting to see what you can get in the way of a room. Choice reservations have been made in advance and on arrival, your escort hands you a hotel card showing your room number . . . a bell boy hustles your luggage and you're comfortably located in little more time than it takes to tell about it.

Wherever you go, you are met upon arrival by comfortable motor cars, roomy busses. Everywhere, and in everything you do, careful planning, advance reservations and the presence of your escort to facilitate every move, saves you countless annoyances. All of your time can be devoted to the sole purpose of your trip—that of enjoying yourself to the utmost.

Let us be your host this summer . . . on a glorious western vacation-of-a-life-time . . . on one of our all-expense, escorted tours. All the way via





the Overland Route you travel through the heart of the scenic, historic West . . . direct, swift, to the vacation playgrounds of your choice.

For 33 years, in our Department of Tours, we have specialized in planning vacations. But never before have we been able to offer such unusual travel bargains as we have for the 1933 summer season.

Rail and Pullman fares, hotel and lodge rates, transportation and entertainment costs, all have been drastically reduced. These reductions are reflected in our 1933 tour costs . . . and we have retained the same first-class service throughout, which has contributed so much to the tremendous popularity of our tours in the past.

Study carefully the many features of each of our tours presented in the book. Make your choice . . . we'll do the rest.

## Why Not Visit Chicago World's Fair?

Why not stop over in Chicago, either before or after your Escorted Tour of Western vacation regions, and see this remarkable "A Century of Progress Exposition?" We shall be pleased to make all the necessary arrangements. Prices, you will find, are nominal. Exposition tours . . . one to five days' duration, range in cost from \$5.75 to \$20.75 and up, according to the hotel selected and the accommodations desired. Rates include all expenses except meals while in Chicago.

The eyes of the world will be focused on this stupendous undertaking . . . the most colorful and spectacular drama ever presented by man. It will tell the complete story of human progress . . . tell it so vividly, so absorbingly, so simply that all who come can see and understand.

And *Chicago invites you* . . . so see this amazing "show" it has to offer.

Natural Color Photograph



The Portland Rose and The Columbine offer you Club Car comfort like this





Natural Color Photograph

Yellowstone's great and  
colorful Grand Canyon

## TOUR "Y"

### YELLOWSTONE - SALT LAKE CITY

9 Days - - \$119.97 *All-Expense*

**M**ORE of us than ever before are going to be looking for a short vacation trip this summer that will take us as far away as possible . . . that will be packed with carefree fun . . . and that is inexpensive.

For this very reason we've planned our "Y" tours on a 9-day basis . . . have trimmed the cost to a minimum . . . and you can't imagine a more perfect trip for a week's holiday.

Perhaps you simply can't get away for a longer time this year in one stretch or it's probably that if you're coming from east of Chicago you may wish to spend a few days visiting A Century of Progress Exposition. Whatever the reason, you'll find that our "Y" tours will afford the most unusual opportunity ever presented for visiting one of the greatest vacation playgrounds on earth, easily, and at startlingly low cost.

Our "Y" Circle Tours, in fact, all of our tours that include Yellowstone, enter the park at West Yellowstone. They make a complete circle, visiting all of the park's innumerable show places. If you wish, you may ride saddle over the trails . . . try your luck at trout fishing . . . or perhaps find some shady retreat and revel in the magnificence of it all as you relax in solid comfort.

Yellowstone's evenings offer a choice of pleasure as well. Dancing at the hotels and lodges . . . excellent entertainment . . . interesting talks by ranger naturalists.

And on "Y" tours, you have the added thrill of Salt Lake City, with its numerous shrines sacred to the memory of the early Mormon settlers.



## DAY BY DAY STORY OF "Y" TOURS

**Saturday** With every detail cared for by a staff of travel experts who attend you at the Chicago & North Western's Chicago Passenger Station, you leave on the Portland Rose, one of the "Overland Route's" famous fleet of splendid trains. All night you travel across agricultural Illinois and Iowa, pausing Sunday morning at Omaha where your train begins its swift flight over the Union Pacific's boulevard of steel, direct to Yellowstone. You will enjoy the roomy observation car.

**Sunday** Across Nebraska's grain laden fields and into Wyoming—Cheyenne, the famous Sherman Hill, Laramie and Creston where you cross the continental divide. Your dining car meals, an important part of any trans-continental rail trip, will be a source of particular joy to you all the way via the "Overland Route." This is a feature of all "Overland Route" Circle Tours.

**Monday** You arrive West Yellowstone, Mont., in the afternoon after traversing a mountainous region whose ever changing series of panoramas is unequaled on any other route. The stately Targhee Forest—Rea's Pass—Warm River Canyon, each a scenic spectacle of the first magnitude, are a fitting prelude to Nature's treasure chest which awaits you in Magic Yellowstone.

The comfortable motor busses of the Yellowstone Park Transportation Co., which carry you to Old Faithful for your first overnight stop in this weird region, pause en route at Excelsior Geyser, Fountain Paint Pot, Morning Glory Pool and other interesting formations.

In the evening watch the bears . . . dance to the strains of a melodious orchestra—enjoy the entertainment around the camp fire or just rest and watch Old Faithful with a giant searchlight playing on it—a truly impressive scene.

**Tuesday** "Old Faithful" is the favorite among the geysers of this thrilling region because of its regularity. You have all the morning to explore this "weirdest spot in the Universe" either conducted by your escort, by a member of the National Park Service, or "go-as-you-please." You will see other unusual sights in the "Basins,"





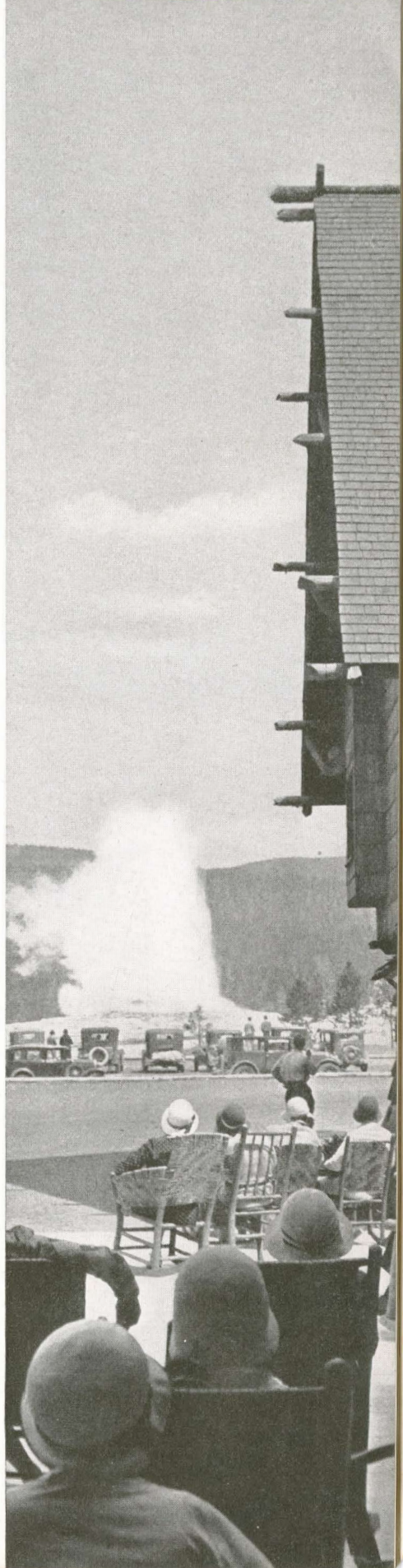
—as interesting as are the geysers. There are such oddities as the Fountain Paint Pot, like a boiling pot of paint, which in reality is colored clay . . . Morning Glory Pool, so named because of its flower-like, delicately tinted cone . . . Black Sand Pool, a hot spring described by its own name . . . Sapphire Springs, as blue as the gem for which it is named. Peer deeply into Firehole Lake and you can readily imagine that underneath the water are blue flames, jetting from some underground furnace.

In the afternoon you motor across the continental divide to lovely Yellowstone Lake whose picturesque shore-line you follow for miles before the highway branches off along the Yellowstone River to Grand Canyon beyond. Stopping en route at uncanny Mud Geyser you arrive before dinner at the Canyon, where you spend two nights and a glorious day.

**Wednesday** A full day at Canyon. Words fail you—you catch your breath at each new view of the Yellowstone Falls in its stupendous setting, as you make your way from one vantage point to another—afoot—in the saddle or by bus. For the more venturesome, “Uncle Tom’s Trail” to the foot of the lower falls offers a challenge. Dancing, bridge, entertainment galore enliven the evening hours at Canyon.

**Thursday** After breakfast a fascinating motor trip is made over spectacular Dunraven Pass. Stop is made at Tower Falls, which is well named because of the numerous towers and pinnacles around the Canyon and Falls. Near-by is the lower end of the Grand Canyon of the Yellowstone, with its perpendicular cliffs more than five hundred feet high. Strange rock formations are found along the road, such as the Overhanging Cliff and The Needles. Fine views of Electric Peak, Mount Everts and Bunsen Peak are seen before arriving at Mammoth Hot Springs. After luncheon, an inspection is made of the terraces of Mammoth Hot Springs which, since the destruction of the pink and white terraces of New Zealand, stand without counterpart in the world. You then motor past dazzling Obsidian Cliff, see Gibbon Falls and hundreds of other interesting sights—stop at Norris Geyser Basin and arrive at West Yellowstone for dinner. A comfortable over-night journey by train brings you to Salt Lake City.

You can watch Old Faithful  
from the veranda of the Inn







Yellowstone's woodchucks are always on the lookout for a "handout" . . . but the pirate bears are the most persistent beggars in the Park.

**Friday** Arriving in Salt Lake City, you breakfast at the beautiful Hotel Utah, your headquarters for the day. An automobile tour of the city gives you an intensely interesting picture of historic as well as modern Mormon culture and terminates at the Mormon Temple Grounds for a delightful noon-day organ recital in the tabernacle. After luncheon at the Hotel Utah which is directly across the way from the Temple Grounds, you motor to Saltair Beach situated on the shore of Great Salt Lake. Ample time is allowed to enjoy a dip in the bouyant waters of the most unique salt sea on the globe—after which you return to your train for the journey "back home."

**Saturday** En route across Wyoming and Nebraska via the "Overland Route" surrounded by every travel luxury of the famous Los Angeles Limited. Again the delicious dining car meals add infinitely to your contentment.

**Sunday** After breakfast, in the diner, you arrive in Chicago refreshed and reluctant to leave the pleasant companions who have helped materially to make your trip most enjoyable.

### "Y" Circle Tours Leave Chicago as follows:

Tour		Tour		Tour		Tour	
Y-1	Sat. June 17	Y-4	Sat. July 8	Y-7	Sat. July 29	Y-10	Sat. Aug. 19
Y-2	Sat. June 24	Y-5	Sat. July 15	Y-8	Sat. Aug. 5	Y-11	Sat. Aug. 26
Y-3	Sat. July 1	Y-6	Sat. July 22	Y-9	Sat. Aug. 12	Y-12	Sat. Sept. 2
Lv. Chicago, Ill. . . . .		10:15 p.m. . . . .	Sat. . . . .	C. & N. W. Ry.			
Ar. Omaha, Nebr. . . . .		9:45 a.m. . . . .	Sun. . . . .	C. & N. W. Ry.			
Lv. Omaha, Nebr. . . . .		10:05 a.m. . . . .	Sun. . . . .	Un. Pac. Sys.			
Ar. West Yellowstone, Mont. . . . .		2:45 p.m. . . . .	Mon. . . . .	Un. Pac. Sys.			
Lv. West Yellowstone, Mont. . . . .		7:30 p.m. . . . .	Thu. . . . .	Un. Pac. Sys.			
Ar. Omaha, Nebr. . . . .		8:15 p.m. . . . .	Sat. . . . .	Un. Pac. Sys.			
Ar. Chicago, Ill. . . . .		9:15 a.m. . . . .	Sun. . . . .	C. & N. W. Ry.			

### Cost of Complete "Y" Circle Tour

#### FROM CHICAGO, RETURNING TO CHICAGO

	With Rail Ticket	Without Rail Ticket
Two passengers occupying lower berth, each . . . . .	\$119.97	\$ 68.22
One passenger occupying lower berth . . . . .	132.38	80.63
One passenger occupying upper berth . . . . .	127.45	75.70
Two passengers occupying compartment, each . . . . .	142.63	90.88
Two passengers occupying drawing room, each . . . . .	151.75	100.00
Three passengers occupying drawing room, each . . . . .	137.09	85.34

Additional compartment and drawing room rates, also rates for incomplete tour on application.

The above rates, shown with and without railroad fare of \$51.75 from Chicago, are based on the "Lodge Way" through Yellowstone, rates "Hotel Way" \$6.50 higher. For all-expense rates from other points (east of Chicago) add rail fare from home station to amount shown "Without Rail Ticket."





Just picture yourself in a setting like this



Or, imagine yourself perched on this rail, viewing the Great Fall of the Yellowstone





Yellowstone's Hot Springs . . . splashed with pastels.

Natural Color Photograph

# TOUR "YRG"

## YELLOWSTONE-SALT LAKE CITY

### THE ROYAL GORGE

### COLORADO SPRINGS AND DENVER

11 Days - - \$143.97 *All-Expense*

**T**HINK of it! . . . in a total of only eleven days you may enjoy the pleasure of a vacation in Yellowstone and Salt Lake City; and include world-famous Royal Gorge and a visit to Colorado Springs and Denver. And the low cost includes every expense.

A varied trip . . . a trip of contrasts. Here, the soft, delicate slopes of Yellowstone's colorful canyon—there, the sheer gray-green walls of Royal Gorge towering above you as your train winds its way between them. Here, the world's greatest geyser basin and the blue waters of Yellowstone Lake—there, the salt-impregnated waters of a great inter-mountain reservoir, the world's largest Dead Sea.

Add the delights of Colorado Springs with its Pikes Peak, Garden of the Gods, Seven Falls . . . its miles of splendid highways . . . its invigorating climate and scenic setting of rarest beauty. And Denver, with its great system of mountain parks, equally famous as a magnet for travelers from the entire nation.

Join one of our "YRG" Circle Tour parties this summer. Pack your bag . . . step aboard a fine, fast train . . . we do the rest.





Natural Color Photograph

Gateway to the Garden of the Gods . . . Colorado Springs

## DAY BY DAY STORY OF "YRG" TOURS

**Saturday** On arrival at the Chicago & North Western Passenger Station in Chicago—"Gateway to all the West"—members of our staff will be waiting to assist you to get away to a perfect start. After boarding the *Portland Rose*, one of the "Overland Route's" luxurious trains, you settle down in comfort and prepare for an enjoyable ride across picturesque Illinois and Iowa.

**Sunday** Across Nebraska on the Union Pacific's "finest roadbed in the country." Through regions famed in frontier history . . . North Platte, home of "Buffalo Bill" . . . Cheyenne, scene of bitter Indian fights. Hours pass all too quickly . . . solid comfort is yours . . . in the dining car "meals that appeal" add zest to the pleasure of your westward journey.

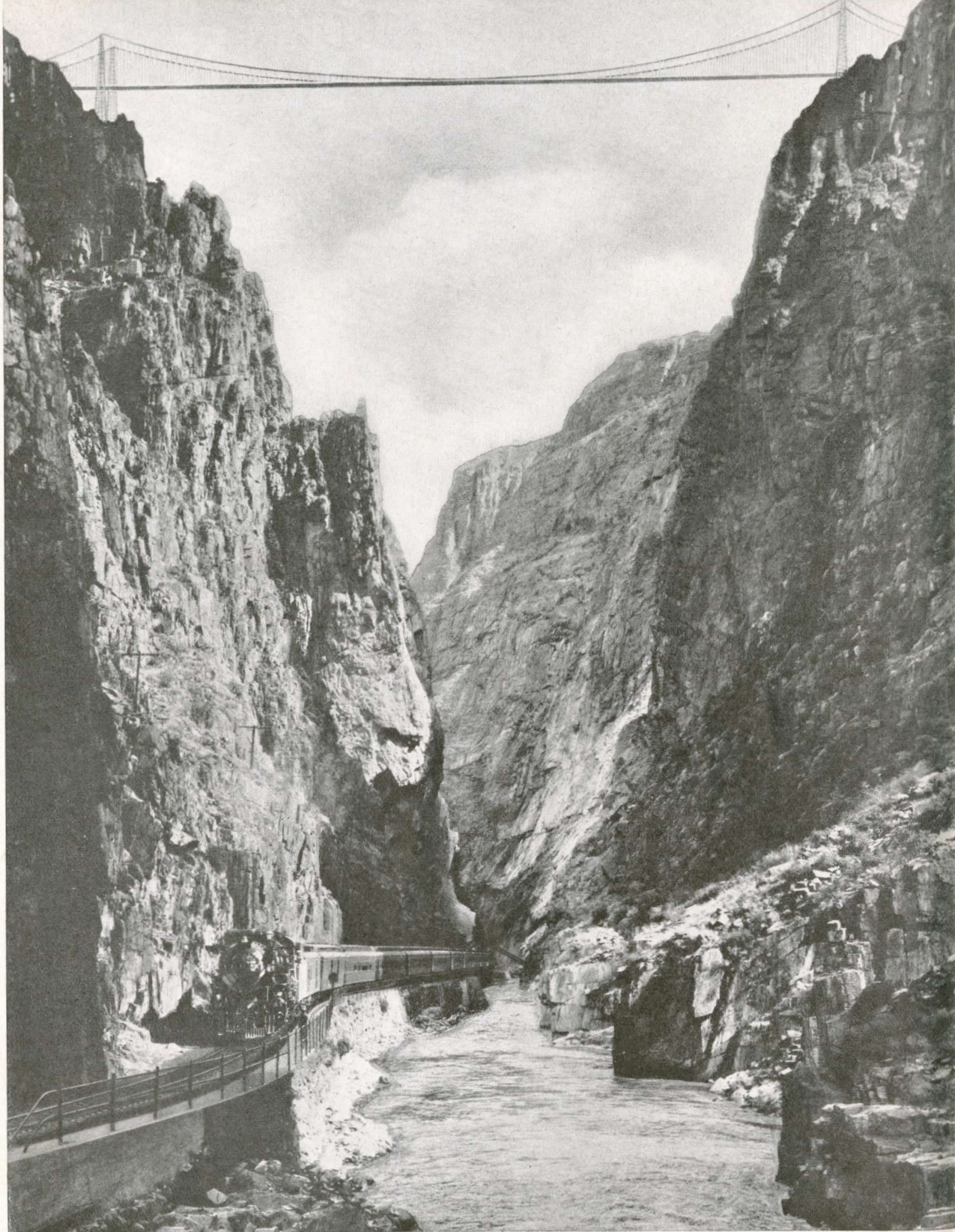
**Monday** Through the depths of the Targhee Forest . . . over Rea's Pass . . . through Warm River Canyon, the magnificent Tetons to the east . . . then, after luncheon in the dining car, West Yellowstone. It's but a step from train to bus.

You enter Yellowstone's exquisite arena at once and motor to Old Faithful for your first night in the Park. Geyser basins . . . steaming pools . . . rushing rivers . . . restful mountain vistas surround you. The hourly eruptions of Old Faithful (how aptly named!) fascinate and mystify.

In the evening special entertainment in the Recreation Hall at the Lodge . . . dancing at both hotel and lodge . . . not the least of all, Old Faithful performing eerily under the glare of immense flood lights.

**Tuesday** After breakfast a variety of entertainment. Hike out over the formations with a party conducted by one of the Rangers . . . join one of the saddle trips . . . motor out to more secluded spots





You ride through the Royal Gorge of the Arkansas in Colorado



for a closer view of Nature's "convulsions" . . . swim in an outdoor pool fed by warm geyser waters. It's a do-as-you-please morning . . . let fancy dictate.

Early afternoon a motor trip to Yellowstone Lake, crossing the Continental Divide, not once but twice. Several pauses on the shores of this wonder-lake to drink in the amazing panorama its setting presents. Then on, past growling Mud Geyser to the Grand Canyon of the Yellowstone . . . dinner and headquarters near the canyon rim. Overnight at the Canyon. Entertainment in variety . . . specially planned for your enjoyment.

**Wednesday** All day to view from every vantage point the mighty falls of the Yellowstone in its gorgeous setting. Saddle trips, motor trips, hiking parties . . . all sorts of ways to get around and plenty of time to see it all. It's a day of unforgettable sightseeing . . . a background that makes the evening program more colorful and alluring . . . the immense camp fire more scintillating . . . the music, the dance more thrilling.

**Thursday** After breakfast en route to Mammoth Hot Springs, you may, if you wish, detour by motor over Mt. Washburn for a commanding view of the entire Park. The additional cost is small. Your route takes you to Tower Falls and along the rim of another canyon of the Yellowstone River . . . smaller, to be sure, but different and every bit as lovely as Grand Canyon. Luncheon at Mammoth . . . then an opportunity to explore the delicately tinted hot spring formations before motoring to West Yellowstone. Stops at Gibbon Falls and Norris Geyser Basin en route . . . West Yellowstone for dinner . . . then begins a restful overnight trip to Salt Lake City.

**Friday** Your day in Salt Lake City is carefully planned . . . breakfast at the Hotel Utah . . . an automobile sightseeing tour of the city . . . visit the Mormon Temple Grounds . . . attend the noon organ recital in the Mormon Tabernacle . . . enjoy a "dip" at Saltair Beach . . . dinner at the Utah . . . spend the early evening as you wish . . . then, "All Aboard for Colorful Colorado!"

**Saturday** The Royal Gorge! . . . Eagle River Canyon! The towering heights of their walls, their dazzling beauty, the surging streams along whose banks your train travels . . . all present a spectacle the beauty of which one can never forget. Then Tennessee Pass . . . the Mount of Holy Cross . . . add features to this all-day trip through southern Colorado's most beautiful rugged mountain region. Just before dinner Colorado Springs, and away to the Antlers Hotel, your headquarters while in the Pikes Peak region. An evening open to do as you please.

**Sunday** In the morning a thrilling trip by motor to the summit of Pikes Peak. In the afternoon the Garden of the Gods . . . South Cheyenne Canyon . . . Seven Falls. Truly a day packed with scenic attractions of the first magnitude (special arrangements for those who desire to attend church service). Then on to Denver, Colorado's capital, with the Shirley-Savoy Hotel as headquarters.

**Monday** Denver, "The Mile-High City." An inspiring all-day drive through the city's great mountain parks, including Lariat Loop Highway to the very top of Lookout Mountain . . . Bear Creek Canyon . . . Park of the Red Rocks. Luncheon at beautiful Troutdale-in-the-Pines. Late in the afternoon board the Overland Route's COLUMBINE for the trip back home.





Natural Color Photograph

Grand Lake is set like a jewel in a crown, rimmed with snowy peaks

*You should not overlook this opportunity to include Rocky Mountain National Park in your tour. The expense is nominal and it only increases your time away from home three days. See page 17 for details.*

**Tuesday** Enroute Chicago . . . you'll enjoy the quiet comfort and restfulness of the day as you cross the fertile fields of Iowa and Illinois. Tastily prepared meals in the diner add to your pleasure. Chicago just after dinner.

### "YRG" Tours Leave Chicago as follows:

Tour	Tour	Tour	Tour
YRG-1 Sat. June 17	YRG-4 Sat. July 8	YRG-7 Sat. July 29	YRG-10 Sat. Aug. 19
YRG-2 Sat. June 24	YRG-5 Sat. July 15	YRG-8 Sat. Aug. 5	YRG-11 Sat. Aug. 26
YRG-3 Sat. July 1	YRG-6 Sat. July 22	YRG-9 Sat. Aug. 12	YRG-12 Sat. Sept. 2
Lv. Chicago, Ill. . . . .	10:15 p.m. . . Sat. . .	C. & N. W. Ry.	
Ar. Omaha, Nebr. . . . .	9:45 a.m. . . Sun. . .	C. & N. W. Ry.	
Lv. Omaha, Nebr. . . . .	10:05 a.m. . . Sun. . .	Un. Pac. Sys.	
Ar. West Yellowstone, Mont. . . . .	2:45 p.m. . . Mon. . .	Un. Pac. Sys.	
Lv. West Yellowstone, Mont. . . . .	7:30 p.m. . . Thu. . .	Un. Pac. Sys.	
Ar. Omaha, Nebr. . . . .	7:00 a.m. . . Tue. . .	Un. Pac. Sys.	
Ar. Chicago, Ill. . . . .	7:45 p.m. . . Tue. . .	C. & N. W. Ry.	

### Cost of Complete "YRG" Circle Tour

#### FROM CHICAGO, RETURNING TO CHICAGO

	With Rail Ticket	Without Rail Ticket
Two persons occupying a lower berth, each . . . . .	\$143.97	\$ 92.22
One person occupying a lower berth . . . . .	156.28	104.53
One person occupying an upper berth . . . . .	151.35	99.60
Two persons occupying a compartment, each . . . . .	166.53	114.78
Two persons occupying a drawing room, each . . . . .	175.65	123.90
Three persons occupying a drawing room, each . . . . .	160.99	109.24

Additional compartment and drawing room rates, also rates for incomplete tour on application.

The above rates, shown with and without rail fare of \$51.75 from Chicago, are based on the "Lodge Way" through Yellowstone, and double room with bath at Antlers and Shirley-Savoy, Hotel. Rates "Hotel Way" \$6.50 higher. For all-expense rates from other points (east of Chicago) add rail fare from home station to amount shown "Without Rail Ticket."



# ESTES-ROCKY MOUNTAIN NATIONAL PARK EXTENSION TOURS

(Arrangements Must be Made at Time of Booking)

If time permits, by all means extend your trip to include a visit to the glorious "Rockies." Inexpensive side-trips can be made from Denver in combination with certain tours, as follows:

## "YRG" CIRCLE TOUR EXTENSION

***Four Days—Round-Trip from Denver only \$24.50 All-Expense***

Leaving Denver at 8:30 Monday morning, you motor through spectacular Big Thompson Canyon to the Estes Park Chalets for luncheon. From Monday noon to Wednesday do as you please. Follow the trails afoot or in the saddle, golf, fish, swim, or just rest to your heart's content. After luncheon Wednesday, a thrilling motor trip over the Continental Divide to lovely Grand Lake for dinner, and overnight at the rustic, homey and modern lodge and cabin village. Thursday, by motor back over the Continental Divide, down through historic old mining towns to Idaho Springs for luncheon. Then up again through Denver Mountain Parks to Lookout Mountain and a drive down picturesque Lariat Trail to Denver where you settle down on Colorado's own train, "The Columbine," for your journey home, arriving Chicago at 7:45 Friday evening.

## "Z" AND "ZRG" CIRCLE TOUR EXTENSION

***"Z" Tours Three Days—Round-Trip from Denver only \$28.85 All-Expense***

***"ZRG" Tours Three Days—Round-Trip from Denver only \$23.10 All-Expense***

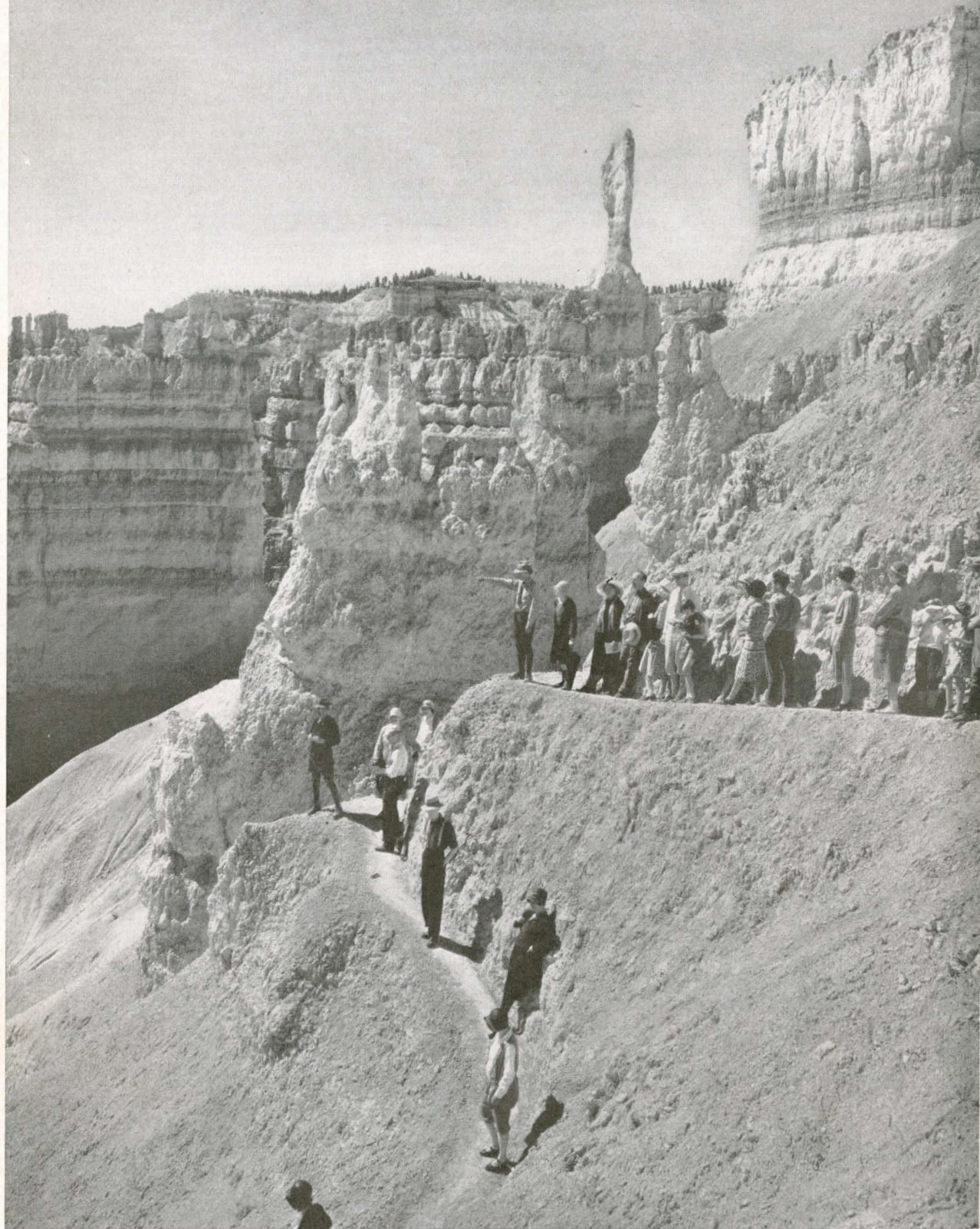
You remain overnight Monday in Denver at the Shirley-Savoy Hotel and leave at 8:30 Tuesday morning, for a comfortable motor-trip through Colorado's great beet sugar country and into the mountains via colorful Big Thompson Canyon to Estes Park Chalets for luncheon. The Chalets, unique, homelike, modern, is the center of activities for the next day. Every outdoor sport in a majestic mountain setting. Leave after luncheon Wednesday for Grand Lake, across "the divide." Magnificent views all the way . . . snowballing above timber-line. At Grand Lake Lodge overnight you learn why they say it's the greatest place on earth to sleep. From Grand Lake to Denver by motor Thursday—across the divide again, mining sites and quaint old towns, Idaho Springs for luncheon, Denver's famous mountain Parks, Lookout Mountain and Buffalo Bill's grave. Your motor trip is timed to arrive Denver for departure on one of the nation's finest trains, "The Columbine," arriving Chicago 7:45 Friday evening.

## "YZ" CIRCLE TOUR EXTENSION

***Two Days—Round-Trip from Denver only \$24.35 All-Expense***

After spending Friday night at the Shirley-Savoy Hotel in Denver, you leave at 8:30 Saturday morning for beautiful Estes Park. Luncheon is taken at the Estes Park Chalets. You then proceed through Horseshoe Park and across the Continental Divide at Milner's Pass to Grand Lake. This is the largest body of water in Colorado and boasts of the highest yacht club anchorage in the world. You remain overnight at Grand Lake Lodge. All day Sunday you motor through Colorado's towering Rockies, again crossing the Continental Divide at Berthoud Pass, then along Clear Creek Canyon and through Denver's Mountain Parks, arriving Denver in the late afternoon, where you board the "Columbine" for Chicago . . . Arriving Chicago 7:45 P. M., Monday.





Bryce Canyon is best viewed from its many trails



# TOUR "YZ"

## YELLOWSTONE - ZION - GRAND CANYON BRYCE CANYON NATIONAL PARKS

### CEDAR BREAKS - SALT LAKE CITY AND DENVER

#### 15 Days - - \$204.69 All-Expense

THERE is no combination of scenic attractions in the west that offers the exceptional variety included in the "YZ" tours, embracing four National Parks. Going direct to Yellowstone, you enter the park at Union Pacific's western gateway—by far the most popular entrance. Starting your trip by motor at this point you see all of the park in its natural sequence.

Yellowstone has been justly termed "Nature's Carnival." Its geysers spouting steam and tinted mud . . . vividly colored pools seething and boiling . . . hot springs bubbling through the earth's erupted crust . . . gorgeous rock terraces dazzling in the sunlight . . . falls plunging thunderously down canyon walls—such sights will convince you of Nature's great "showmanship."

None the less intriguing, yet of far different appeal, are the five famous natural wonderlands, which the Southern Utah-Arizona group offers you on a "YZ" Circle Tour.

Zion National Park is a symphony of color, form and friendliness. Its stupendous gorge with mighty walls tinted in ever-changing shades of color, offers a limitless variety of splendor.

Kaibab National Forest with its virgin stands of pine, spruce and fir trees, artistically intermixed with charming aspen, is "home" to thousands of graceful deer and to the rare and beautiful little white-tailed squirrel.

In Grand Canyon, Nature carved her eternal masterpiece with tools of wind and water. Grand Canyon is an epic of erosion. Thirteen miles from rim to rim, it presents from the towering North Rim an endless aspect of terraces, spires, gorges—scarlet in the sunlight—tempered to purple and liquid silver in the shadows.

The vast natural amphitheatre that is Bryce Canyon National Park displays another mood of Nature most amazing and enchanting. To stand on the rim of this canyon and look down is to gaze upon all of the fairy cities of fabledom, painted in every color and blended shades of color.

Cedar Breaks as viewed from the rim—a vast expanse more massive than Bryce Canyon, yet less delicate of form—is a riot of color unbelievably beautiful.

Four of our most unusual and magnificent National Parks . . . two state capital cities . . . National Forests . . . National Monuments . . . all on a two week's vacation trip. Our "YZ" tours constitute one of the greatest travel bargains in our history.





A mile below Grand Canyon's rim the mighty Colorado River rages

Natural Color Photograph

## DAY BY DAY STORY OF "YZ" TOURS

**Saturday** Late evening . . . Chicago & North Western's Chicago Passenger Station . . . a busy though orderly scene . . . Overland Route's luxurious and comfortable Portland Rose waiting . . . an "All Aboard" and your vacation begins . . . your worries cease. Across the mighty Mississippi . . . over the muddy Missouri and into Omaha the next morning. A change of locomotives . . . and you continue on smoothly, swiftly, over Union Pacific's "Trail of the Iron Horse."

**Sunday** Across Nebraska . . . splendid meals in the dining car . . . interesting panoramas from the observation car . . . charming companions . . . deep-seated comfort . . . historic points of interest along your route . . . the tang of the air as the sun goes down . . . then how you can sleep!

**Monday** Evergreen forests, rushing streams, rocky ridges, precipitous slopes along the right-of-way . . . in the distance the majestic Tetons. In the afternoon arrive West Yellowstone . . . right on the park's western boundary. Before you know it you are whisked away in comfortable, roomy busses . . . you're in Yellowstone. Scenic thrills galore . . . through Christmas Tree Grove, along the Firehole River, past National Park Mountain, en route to Old Faithful. And, in the evening, something to entertain you every minute.

**Tuesday** All morning to explore the weird formations which completely surround you wherever you go. In the afternoon another interesting trip, with a surprise at every turn, stopping at



Kepler Cascade, Thumb Paint Pots, Fishing Cone, to gorgeous Yellowstone Lake. Skirting the shores of the lake, one of the largest and loveliest outside of the Great Lakes Basin, your route continues on past Mud Geyser to Yellowstone Canyon where you arrive in time for dinner. In the evening, as at all lodges and hotels throughout the park, programs provide no end of amusement . . . crackling campfires and community singing . . . music, dancing . . . taps.

**Wednesday** All day is yours to do as you choose. For the more ambitious, Uncle Tom's Trail to the foot of the Great Fall is a treat. Easy stairs to the brink of the falls . . . trails along the canyon rim to Artist Point or Inspiration Point, with ever-changing views.

**Thursday** In the morning the motor takes you to Mammoth Hot Springs—headquarters of the park—stopping en route at Tower Falls. Luncheon at Mammoth . . . ample time later to explore the terraces, delicate of form, vast in extent, pastel in color. By motor to West Yellowstone . . . through Golden Gate . . . past Obsidian Cliff, Twin Lakes, Gibbon Falls . . . stopping at weird Norris Geyser Basin. After dinner, depart for Salt Lake City.

**Friday** Breakfast at Salt Lake City's Hotel Utah, and depart in the midmorning for an interesting drive around the city, visiting the host of historic landmarks and terminating at the Mormon Temple Grounds for the noonday organ recital in the Tabernacle. After luncheon at the Utah, a drive to Saltair Beach for a dip in bouyant Salt Lake, returning to your hotel for dinner and go-as-you-please. Entrain in the late evening for Southern Utah where Nature, in still different moods, awaits you.

**Saturday** After breakfast in the diner, you reach Lund, Utah, where de luxe motor busses of the Utah Parks Company await your arrival to speed you to Zion National Park. The highway follows along the Virgin River, a swift, sinuous stream, its waters stained with the red of the hillsides. In the distance are glimpses of the peaks which enclose Zion Canyon—glorious panoramas of white and crimson-topped cones and buttes, almost unreal in their array of colorings. After luncheon at Zion Lodge . . . a motor trip to the Temple of Sinawava, past the Great White Throne, will consume most of your afternoon hours . . . and Zion's unique outdoor swimming pool will undoubtedly command your attention before dinner. After dinner—a splendid program . . . an interesting talk by the Ranger Naturalist . . . dance if you wish, or roam out in the open with a brilliant starlit canopy overhead.

**Sunday** Out in the open . . . on the finest of trails . . . enjoying now a gorgeous glimpse of the East Temple—the West Temple, or possibly just resting in the inspiring region of The Narrows, watching the sun work miracles in the ever-changing panorama before you. Leaving Zion, early afternoon finds you gazing, gasping in awe, as you stand at one of the tunnel windows on the new Mt. Carmel Highway, en route to the Grand Canyon. Through quaint Mormon villages . . . winding through the Kaibab with all eyes watching for the flash of a fleeting white-tailed squirrel—a view of browsing deer . . . then Grand Canyon, austere, breath-taking.





A Ranger explains the formation  
of Old Faithful's crater

**Monday** All day at Grand Canyon. Visit Cape Royal, Point Imperial, Point Sublime or any of the dozens of points from which you may enjoy the awesome grandeur of this masterpiece of Nature. Motor out . . . walk along the rim trails . . . horseback down into the canyon . . . or just rest along the canyon rim. From wherever you choose to view Grand Canyon, the picture is divine. The Recreation Hall is a scene of lively entertainment in the evening.

**Tuesday** Riding again through the Kaibab . . . across prismatic plains . . . luncheon at Kanab . . . and, at 4:30 in the afternoon, Bryce Canyon. Before dinner, an opportunity to stand on the rim of the canyon at sunset, when the delicate colors are most vivid—most striking. Were you to visit Bryce a dozen times, you still wouldn't believe such exquisite beauty could exist.

**Wednesday** To really appreciate the delicacy of Bryce Canyon's fantastic formations, follow the trails, on foot or in the saddle. The myriad marvels of Nature's handiwork will stretch your imagination almost to the breaking point. Evenings here too offer entertainment for those who would participate . . . and what a place to sleep!

**Thursday** En route after breakfast, a stop at Cedar Breaks—an amphitheatre of tremendous formations splashed with every color of the rainbow—will add another surprise. Indescribable beauty. Luncheon at Hotel El Escalante in Cedar City . . . and then a short motor trip to Lund, to board your Pullmans for a restful trip to Denver.

**Friday** Crossing the continental divide in the late morning you turn southward and parallel the towering ranges of Colorado's Rockies for several hours, arriving in Denver early in the afternoon. Some of the party will remain over to enjoy the extension trip into the



mountains. The rest will continue homeward on one of the nation's finest trains—The Columbine.

*Rocky Mountain National Park can be included in your trip at nominal expense and only increases your time away from home two days. See page 17 for details.*

**Saturday** Omaha in the early morning from whence the "North Western" provides you with "the best of everything" to Chicago. Every travel luxury to make your journey one of greatest pleasure.

### "YZ" Circle Tours Leave Chicago as follows:

Tour		Tour		Tour		Tour	
YZ-1	Sat. June 17	YZ-4	Sat. July 8	YZ-7	Sat. July 29	YZ-10	Sat. Aug. 19
YZ-2	Sat. June 24	YZ-5	Sat. July 15	YZ-8	Sat. Aug. 5	YZ-11	Sat. Aug. 26
YZ-3	Sat. July 1	YZ-6	Sat. July 22	YZ-9	Sat. Aug. 12	YZ-12	Sat. Sept. 2

L.v. Chicago, Ill. . . . .	10:15 p.m. . . . .	Sat. . . . .	C. & N. W. Ry.
Ar. Omaha, Nebr. . . . .	9:45 a.m. . . . .	Sun. . . . .	C. & N. W. Ry.
L.v. Omaha, Nebr. . . . .	10:05 a.m. . . . .	Sun. . . . .	Un. Pac. Sys.
Ar. West Yellowstone, Mont. . . . .	2:45 p.m. . . . .	Mon. . . . .	Un. Pac. Sys.
L.v. West Yellowstone, Mont. . . . .	7:30 p.m. . . . .	Thu. . . . .	Un. Pac. Sys.
Ar. Lund, Utah . . . . .	7:55 a.m. . . . .	Sat. . . . .	Un. Pac. Sys.
L.v. Lund, Utah . . . . .	2:50 p.m. . . . .	Thu. . . . .	Un. Pac. Sys.
Ar. Omaha, Nebr. . . . .	7:00 a.m. . . . .	Sat. . . . .	Un. Pac. Sys.
Ar. Chicago, Ill. . . . .	7:45 p.m. . . . .	Sat. . . . .	C. & N. W. Ry.

### Cost of Complete "YZ" Circle Tour

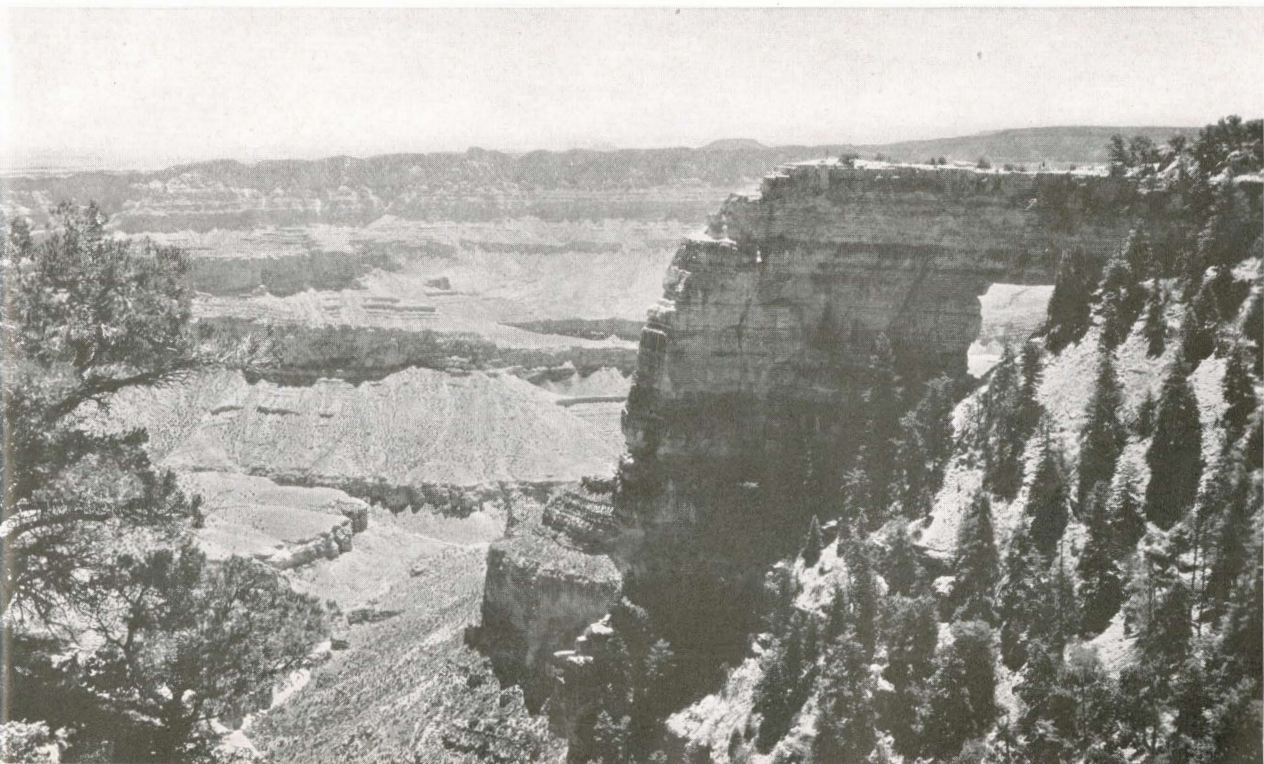
#### FROM CHICAGO, RETURNING TO CHICAGO

	With Rail Ticket	Without Rail Ticket
Two persons occupying a lower berth, each . . . . .	\$204.69	\$142.04
One person occupying a lower berth . . . . .	220.88	158.23
One person occupying an upper berth . . . . .	214.40	151.75
Two persons occupying a compartment, each . . . . .	234.13	171.48
Two persons occupying a drawing room, each . . . . .	245.50	182.85
Three persons occupying a drawing room, each . . . . .	226.50	163.85

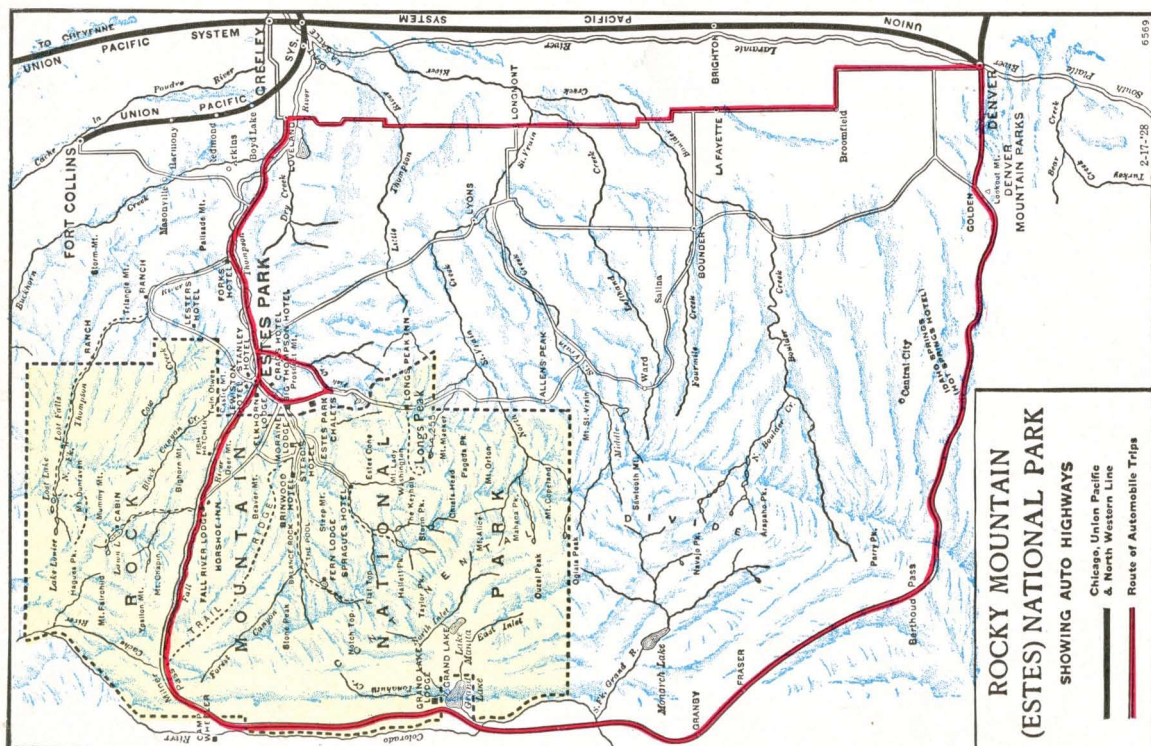
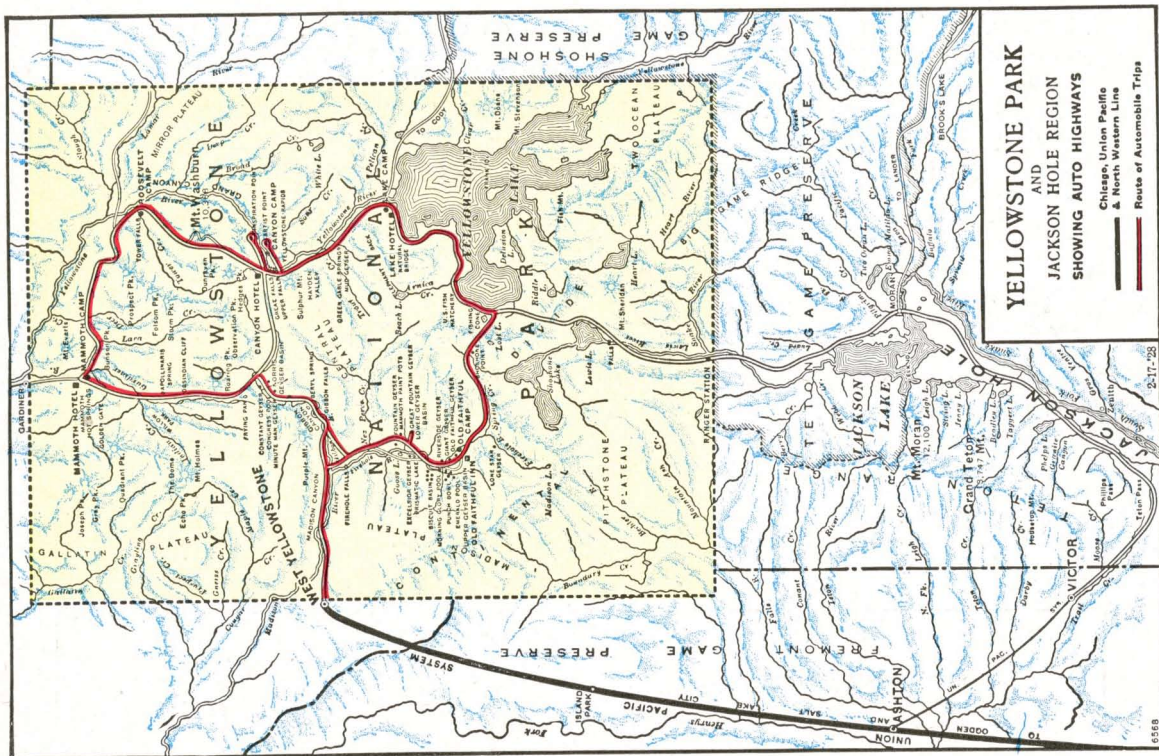
Additional drawing room and compartment rates, also rates for incomplete tour on application.

The above rates shown with and without railroad fare of \$62.65 from Chicago, are based on "Lodge Way" in Yellowstone, rates "Hotel Way" \$6.50 higher. For all-expense rates from other points (east of Chicago) add rail fare from home station to amount shown "Without Rail Ticket."

Angels Window at Cape Royal along Grand Canyon's rim















No finer trails were ever built than those of Zion



One of the six great portals that pierce Mt. Carmel Highway's mile-long tunnel



# TOUR "Z"

## ZION-GRAND CANYON-BRYCE CANYON NATIONAL PARKS

CEDAR BREAKS-SALT LAKE CITY DENVER

11 Days - - \$157.42 *All-Expense*

**N**O tour of the entire west can include more of the scenic attractions in the same length of time than are included in our eleven-day tour to Southern Utah and Northern Arizona. This is proven by its growing popularity each year.

On our "Z" Tours, you spend all of your precious vacation hours in the West "doing" thoroughly the newest, most unusual region in the country—Southern Utah-Arizona. Going direct from Chicago to Salt Lake City, you stop over for a delightful day in the capital city of Utah, then travel overnight to Lund, Utah, from whence you start your four hundred and fifty mile motor tour of flaming canyon country.

Zion with its great gorge—colorful, sheer, sublime. Grand Canyon—"the shrine of beauty lovers from all the world." Bryce Canyon—"the sensation of the National Parks." All along the miles of highways connecting these three outstanding national parks with each other—and connecting all with Union Pacific's main line—is an endless panorama of charm . . . incomparable thrills which make every moment of this memorable trip one of pure delight.

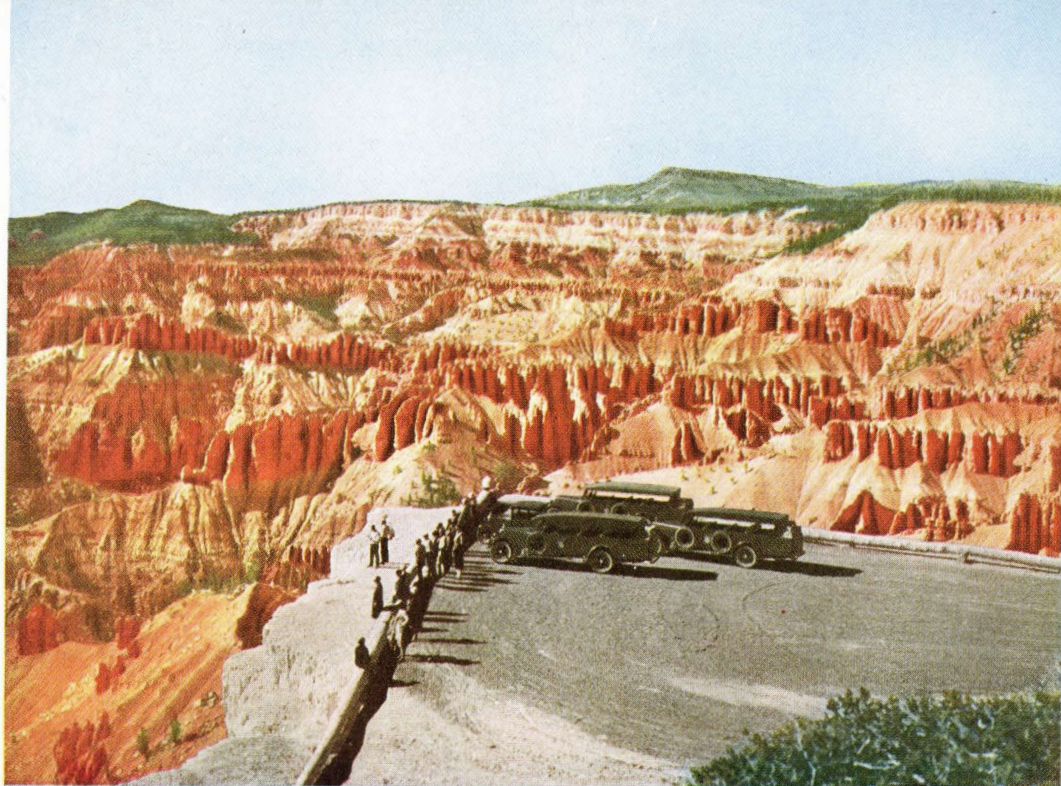
### DAY BY DAY STORY OF "Z" TOUR

**Saturday** Leave Chicago via the Chicago & North Western on the Los Angeles Limited—one of the Overland Route's famous fleet of fine, fast trains to all the West. A continuous, pleasant panorama of fertile, rolling farm lands.

**Sunday** From Omaha, in the morning, the Union Pacific carries you west over a striking stretch of roadbed through historic cities and towns of Nebraska and Wyoming.

**Monday** Breakfast in the diner, another of those excellent meals which you will be looking forward to by now, and, in the middle of the morning, arrive Salt Lake City—to be met at the train and motored over the city's charming streets and boulevards. At noon, the organ recital in the world-famed Tabernacle—just one of the interesting features of the Mormon Temple Grounds. Luncheon at the Hotel Utah—an afternoon drive to Saltair Beach for a dip in Salt Lake, and return to the Utah for dinner. All the evening is free. Your sleepers are ready for occupancy about 9:30, the train leaving about midnight for the parks.





Natural Color Photograph

You ride up to the very rim of Cedar Breaks amphitheatre

**Tuesday** Arrive Lund, Utah, after breakfast. Utah Parks Company's luxurious stages whisk you away, bag and baggage, for a motor tour of tours; going via Cedar City direct to Zion. All the way to Zion Lodge is an endless succession of red mountains, banded with yellow, pink and gray in remarkable combinations of color; carved into gigantic temples with towers and spires of colored stone. After luncheon, a trip by motor to the Temple of Sinawava—you'll be overwhelmed at the beauty and magnitude of this inspiring region. Entertainment, nature talk, movies, dancing, plenty of activity for the evening hours.

**Wednesday** Miles of spectacular trails . . . the East Rim, the West Rim, the Narrows. Ride or hike . . . or swim in a picturesque outdoor pool. Then, a delightful luncheon at the Lodge. Motor away at 1:00 P.M., en route to Grand Canyon . . . six huge tunnel portals along magnificent Mt. Carmel Highway, each framing a masterpiece of scenic grandeur . . . deep into the Kaibab, with its abundance of deer, its shy white-tailed squirrels. Grand Canyon village . . . an enthusiastic welcome . . . then a dash for the Canyon's rim for the first breath-taking view of Nature's most stupendous spectacle. Evening events at Grand Canyon are planned for your pleasure. Great log fires . . . informal entertainment . . . music for the dance.

**Thursday** Grand Canyon from Cape Royal, with its Angels Window, presents an entirely different view than from other points along the rim. A mile below and miles away is the Colorado River, rushing, raging. Beyond the opposite rim you can see for miles out across the desert—the Painted Desert. Point Imperial is likewise fascinatingly different. See them both on a thrilling motor trip over the new Cape Royal Highway, at small additional expense. You have a full day at Grand Canyon to enjoy its sublime beauty—ever-changing as the sun courses its resplendant way from east to west.



**Friday** Leave Grand Canyon after breakfast for Bryce Canyon National Park, stopping for luncheon at Kanab. Back again, over the winding road, into the Kaibab . . . out across the plains . . . through sparkling canyons . . . past Vermilion Cliffs . . . then, Bryce Canyon the beautiful—like a glimpse of another world. Sunset enlivens the myriad tints of Bryce Canyon's fragile formations and presents the towering temple peaks, the colorful sculptured depths at their best. Entertainment galore during the evening.

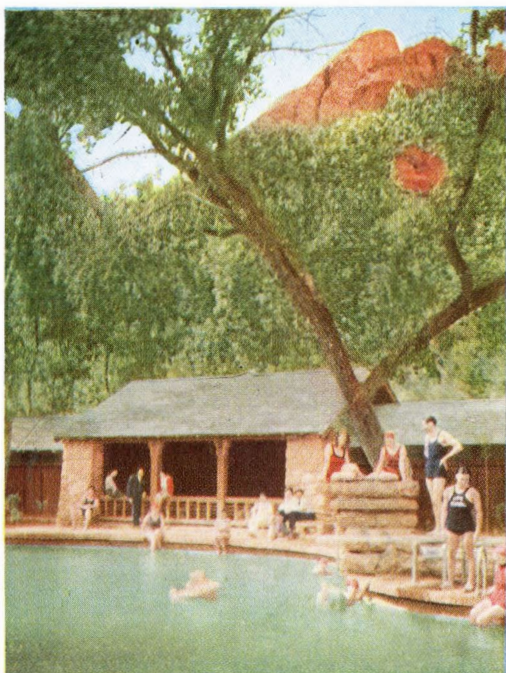
**Saturday** Along the rim . . . down the trails . . . wherever you go, something new and startling wherever your eyes rest. So accurately has Nature's skill carved out the innumerable statues, statuettes and delicate filigree formations that there is no need to stretch your imagination one bit to easily discern the various figures which your guide will point out to you at every bend in the trail. All day at Bryce.

**Sunday** By motor to kindred Cedar Breaks, quite similar in composition—less delicate of form—yet more colorful in tints. Red Canyon, Cedar Canyon, and a host of other interesting sights indelibly impressed in your mind all along the highway which leads to Cedar City, luncheon, and the departure for Lund where you entrain for the first lap of your journey back home.

**Monday** Soon after luncheon in the dining car you arrive at Denver, capital city of Colorado. If you're extending your trip to include the Estes-Rocky Mountain National Park side-trip, you'll leave the party here. If not, you'll depart on "The Columbine" in late afternoon for a swift, restful journey eastward . . . home.

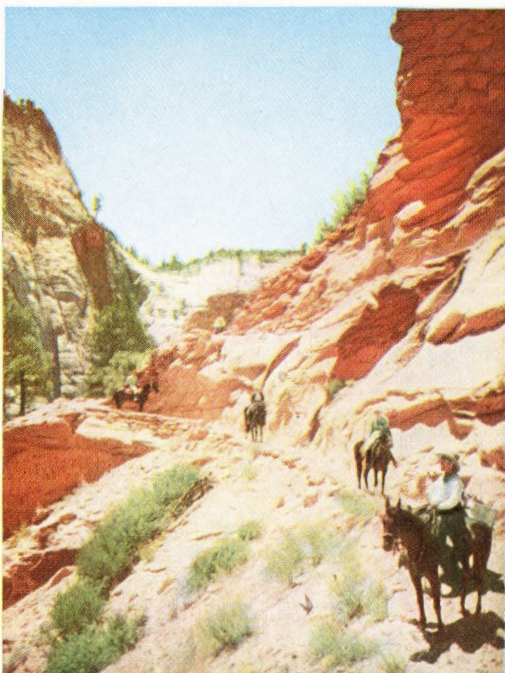
*Include Rocky Mountain National Park in your tour . . . the expense is nominal and it only increases your time away from home three days. See page 17 for details.*

The pool at Zion is a delightful treat



Here's a little "local color" on Zion's East Rim trail

Natural Color Photographs







This Grand Canyon view is within a stone's throw of your lodge

**Tuesday** You'll enjoy every minute of the day as your train speeds eastward over the Union Pacific—Chicago & North Western. A short pause at Omaha in the morning and then just a day's ride to Chicago. Meals for which these two great railroads are famous are served in sparkling, smart, dining cars. Arrive Chicago in the early evening.

**"Z" Circle Tours Leave Chicago as follows:**

Tour		Tour		Tour		Tour	
Z-1	Sat. June 17	Z-4	Sat. July 8	Z-7	Sat. July 29	Z-10	Sat. Aug. 19
Z-2	Sat. June 24	Z-5	Sat. July 15	Z-8	Sat. Aug. 5	Z-11	Sat. Aug. 26
Z-3	Sat. July 1	Z-6	Sat. July 22	Z-9	Sat. Aug. 12	Z-12	Sat. Sept. 2

Lv. Chicago, Ill. . . . .	9:35 p.m. . . . .	Sat. . . . .	C. & N. W. Ry.
Ar. Omaha, Nebr. . . . .	9:40 a.m. . . . .	Sun. . . . .	C. & N. W. Ry.
Lv. Omaha, Nebr. . . . .	10:05 a.m. . . . .	Sun. . . . .	Un. Pac. Sys.
Ar. Lund, Utah . . . . .	7:55 a.m. . . . .	Tue. . . . .	Un. Pac. Sys.
Lv. Lund, Utah . . . . .	2:50 p.m. . . . .	Sun. . . . .	Un. Pac. Sys.
Ar. Omaha, Nebr. . . . .	7:00 a.m. . . . .	Tue. . . . .	Un. Pac. Sys.
Ar. Chicago, Ill. . . . .	7:45 p.m. . . . .	Tue. . . . .	C. & N. W. Ry.

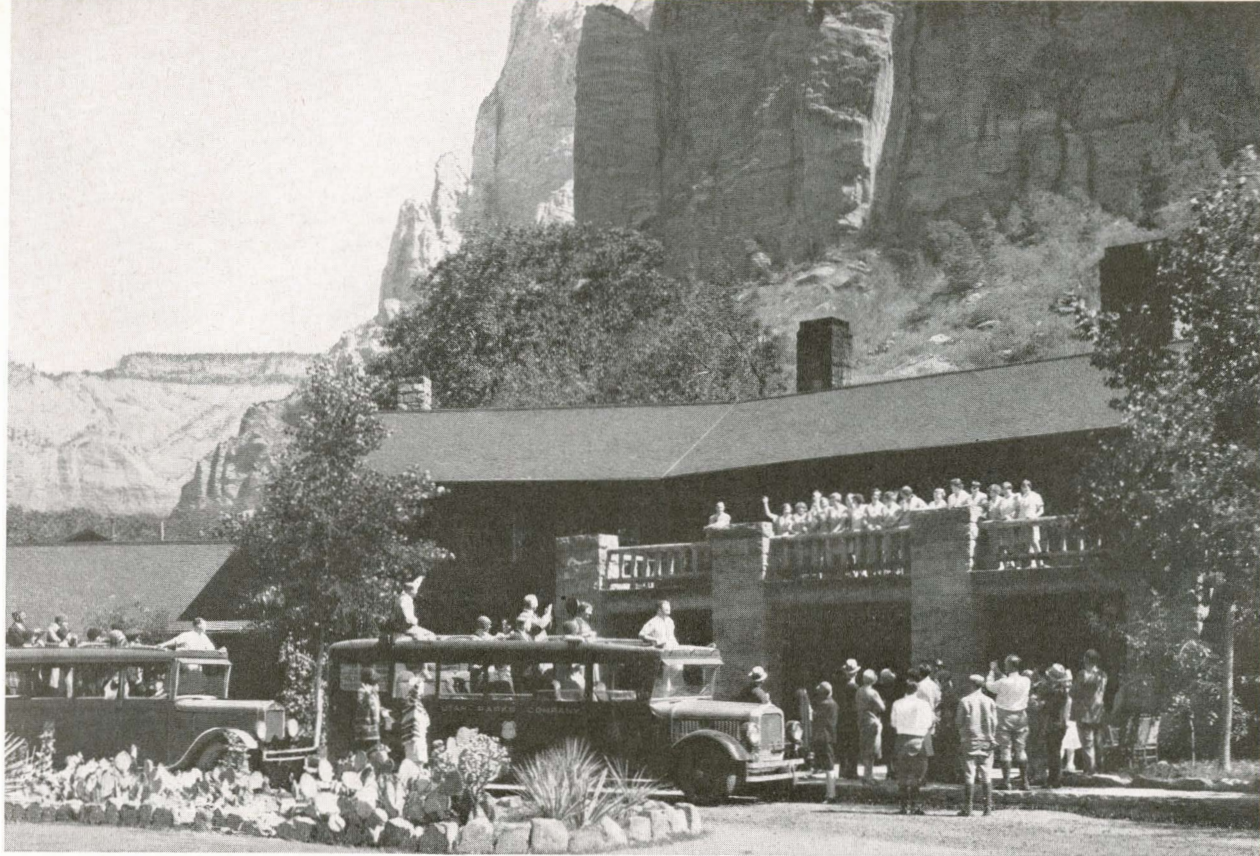
**Cost of Complete "Z" Circle Tour**

FROM CHICAGO, RETURNING TO CHICAGO

	With Rail Ticket	Without Rail Ticket
Two persons occupying a lower berth, each . . . . .	\$157.42	\$ 97.07
One person occupying a lower berth . . . . .	172.48	112.13
One person occupying an upper berth . . . . .	166.45	106.10
Two persons occupying a compartment, each . . . . .	184.60	124.25
Two persons occupying a drawing room, each . . . . .	195.60	135.25
Three persons occupying a drawing room, each . . . . .	177.85	117.50

Additional compartment and drawing room rates, also rates for incomplete tour on application.  
The above rates are shown with and without railroad fare of \$60.35 from Chicago. For all-expense rates from other points (east of Chicago) add rail fare from home station to amount shown "Without Rail Ticket."





"Au Revoir" in the typical Zion fashion

## TOUR "ZRG"

### ZION - GRAND CANYON - BRYCE CANYON NATIONAL PARKS - CEDAR BREAKS SALT LAKE CITY—THE ROYAL GORGE—DENVER

12 Days - - \$163.42 *All-Expense*

**I**N the five major attractions of Southern Utah-Arizona, each unique and supreme in its own right, "ZRG" parties spend six unforgettable happy days.

Zion National Park with its intimate majesty . . . Kaibab National Forest with its exquisite virgin stands of pine, cedar, spruce and graceful aspen . . . Grand Canyon, sublime in depth and shadow . . . fantastic Bryce Canyon with its flaming minarets . . . Cedar Breaks, vast and vari-colored.

"ZRG" Circle Tours make a complete "loop" of these enchanting regions. They include, as well, a trip through the world-famous Royal Gorge and a most satisfying taste of the grandeur of the Colorado Rockies.



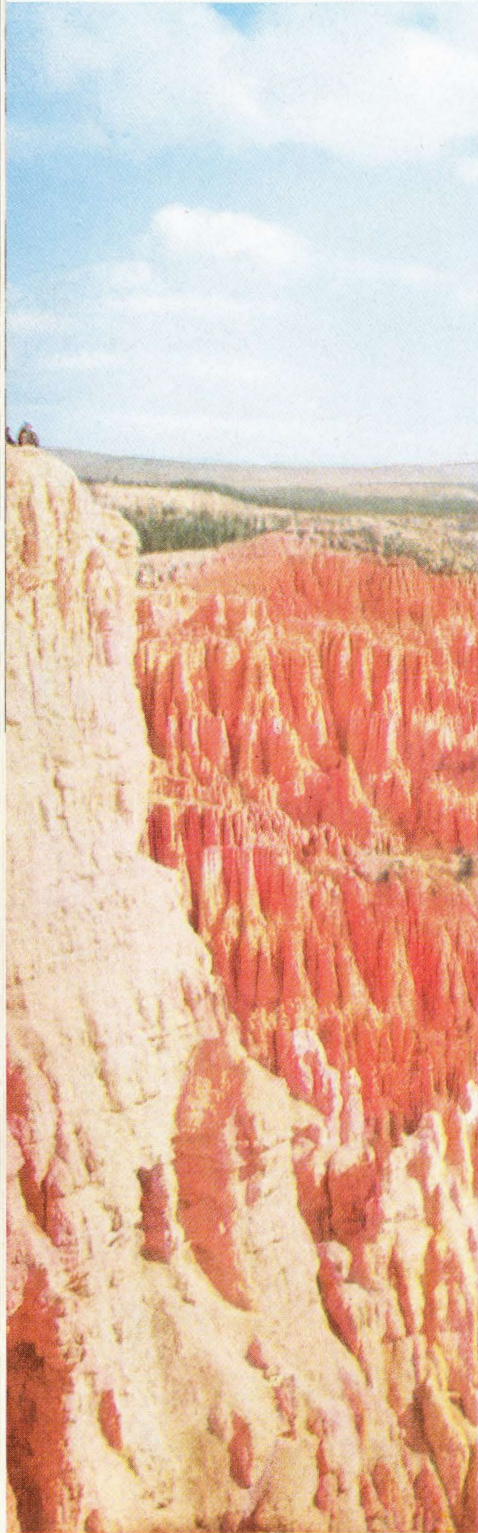
## DAY BY DAY STORY OF "ZRG" TOURS

**Saturday** Relieved of all travel cares at the very start of the trip, you leave on the Los Angeles Limited from the Chicago & North Western's splendid Chicago Passenger Station. Due west across Illinois and Iowa your swift journey is safeguarded by continuous automatic train control equipment—an invisible guardian which assures you safety.

**Sunday** From Omaha, which you reach in the morning hours, you travel over the Union Pacific—across Nebraska, the northeast tip of Colorado, and into Wyoming, with stops along the line at cities famous in frontier history.

**Monday** Your route takes you through beautiful Weber Canyon, through Ogden and to Salt Lake City, where you arrive in mid-morning—are met at the station and motored away for a delightful drive around the city, terminating at the Mormon Temple Grounds in time for the noon organ recital in the famed Tabernacle. Luncheon and dinner are served you in the metropolitan Hotel Utah. The afternoon is devoted to a motor trip to the Great Salt Lake resort—Saltair Beach. You'll enjoy the novelty of a dip in this salt sea. The evening is free, your train leaving after midnight for Southern Utah (sleepers are ready for occupancy at 9:30 P.M.)

**Tuesday** Breakfast in the diner, then detrain at Lund, Utah, for the trip by automobile to Zion National Park. And here begins the parade of majestic peaks that is Zion. It is fortunate that their names have been carefully chosen, for each name partially describes the mountain to which it is applied. First come the East and West Temples, two great domes crested with crimson that bleeds down their pale sides. Then the great red sandstone pile of the Watchman, looking serenely down upon the valley. Almost before your driver has named it, the stains of crimson on the summit of a white precipice have suggested its name—the Altar of Sacrifice. On the left runs the great Streaked Wall, its top broken into strange white cones. At noon Zion Park Lodge welcomes you into its charming, home-like atmosphere. After lunch a delightful motor



Natural Color Photograph

Bryce, too, has its  
Inspiration Point



trip to the Temple of Sinawava and the Narrows. Dinner at the Lodge. In the evening an impromptu entertainment, an interesting talk by the park naturalist, a dance, or a walk out under the starlit heavens will round out an inspiring day's activities.

**Wednesday** The gentle majesty of Zion and its sheer, colorful gorge, intrigue and inspire. Spend the morning as you will. After a tasty luncheon, your motor car takes you over one of the most unusual mountain highways in the world. The new Mt. Carmel Highway, opened for the first time during the 1930 season to regular travel, defies description. Its major tunnel, over a mile long, blasted out of the mountain side, is pierced at six points by picturesque portals, each of which frames an imposing vista of captivating loveliness. Beyond this new highway your route is across prismatic plains and into the impressive Kaibab National Forest. The Kaibab, a virgin stand of towering pines and graceful aspen is the home of a herd of over 20,000 deer, many large groups of which will come out to greet you as you motor through their favorite haunts. The Kaibab is also the home of the rare white-tailed squirrel.

Your ride ends abruptly and most sensationally at the very brink of Grand Canyon as your bus comes to Grand Canyon Lodge. You will enjoy the comforts and the atmosphere of aristocratic informality at Grand Canyon Lodge.

**Thursday** All day at Grand Canyon. Motor trips to Cape Royal, Point Imperial, Point Sublime—saddle trips along the rim or down the trails are available. Or perhaps you may prefer simply to bask in the sunshine on the canyon's rim near your cabin and "drink in" the stupendous panorama before you, whose colorful beauty changes every hour as the sun courses its way across the heavens. Dancing and entertainment for your pleasure during the evening hours.

**Friday** You drive through the majestic Kaibab, across the plains to Kanab for luncheon, then to Bryce Canyon National Park where you arrive in the late afternoon. Bryce Canyon Lodge is situated only a short way from the rim of Bryce Canyon and you are quartered in the same type of homey, modern and



Natural Color Photograph

Seven Falls (count 'em)  
at Colorado Springs



comfortable cabins as at Zion and Grand Canyon. Bryce Canyon will awe the senses of the most imaginative with its labyrinth of grotesque but beautiful figures and fragile filigree carved in rock, flame-vivid in color and tinted with every shade of the spectrum. You remain overnight at Bryce and a pleasant evening of entertainment and dancing is provided.

**Saturday** All day at Bryce—and there are side-trips and trail trips without limit for you to choose from. A most popular all-day trip is that to Natural Bridge which may be visited best by horse-back with an experienced guide to lead the way, entertain with his droll western wit and act as host at luncheon out under the heavens.

**Sunday** After breakfast your motor busses leave for the return trip to Cedar City. The route is through fantastic Red Canyon, past great areas of black angular lava from extinct volcanoes, through fine forests and open “parks” to Cedar Breaks.

An artist has counted more than sixty tints in Cedar Breaks whose series of vast amphitheatres is eroded to a depth of 2,000 feet in an area of 60 square miles. As you stand on the rim of this scintillating show-place you cannot help but be impressed with the power of Nature’s mighty processes.

Leaving Cedar Breaks on the last stretch of the tour among the Utah-Arizona Wonderlands, as you ride along the way, to your left in the distance can be seen the towers and temples of Zion, which only a few days before were viewed from their very bases. The drive continues on through beautiful Cedar Canyon and you arrive at Cedar City for luncheon. A short motor trip to Lund after luncheon returns you to your Pullmans for the trip “back East.” Soon after dinner in the diner you arrive in Salt Lake City, from whence you begin your journey to Denver over the Denver & Rio Grande Western.

**Monday** Comfortably quartered in your special Pullmans you experience new thrills on your trip en route through Colorado. The Royal Gorge of the Arkansas with its great and precipitous walls and its rushing river, whose course you follow through the narrow gorge, is the most spectacular feature of a day of thrills. After a brief pause at Colorado Springs about dinner time, you arrive at Denver in the evening and detrain for overnight at the Shirley-Savoy Hotel.

**Tuesday** Breakfast and luncheon are served at the Shirley-Savoy Hotel and, except for a fascinating drive around the city in the morning, you are free to do as you please until train time, the departure of “The Columbine” in late afternoon.

*You can include Rocky Mountain National Park in your tour at nominal expense and only increase your time away from home two days. See page 17 for details.*

**Wednesday** You’ll welcome the quiet comfort of this unique train and enjoy the opportunity to ponder over the fascinating experiences of the past twelve days as you travel swiftly eastward via the historic “Overland Route.” All day your train clips off mile after mile of your journey home, through Omaha, where you leave the Union Pacific rails and continue on over the “North Western” for the last lap of your journey back to Chicago, arriving there early in the evening.



## "ZRG" Circle Tours Leave Chicago as follows:

Tour	Tour	Tour	Tour
ZRG-1 Sat. June 17	ZRG-4 Sat. July 8	ZRG-7 Sat. July 29	ZRG-10 Sat. Aug. 19
ZRG-2 Sat. June 24	ZRG-5 Sat. July 15	ZRG-8 Sat. Aug. 5	ZRG-11 Sat. Aug. 26
ZRG-3 Sat. July 1	ZRG-6 Sat. July 22	ZRG-9 Sat. Aug. 12	ZRG-12 Sat. Sept. 2

Lv. Chicago, Ill. . . . .	9:35 p.m. . . . .	Sat. . . . .	C. & N. W. Ry.
Ar. Omaha, Nebr. . . . .	9:40 a.m. . . . .	Sun. . . . .	C. & N. W. Ry.
Lv. Omaha, Nebr. . . . .	10:05 a.m. . . . .	Sun. . . . .	Un. Pac. Sys.
Ar. Lund, Utah . . . . .	7:55 a.m. . . . .	Tue. . . . .	Un. Pac. Sys.
Lv. Lund, Utah . . . . .	2:50 p.m. . . . .	Sun. . . . .	Un. Pac. Sys.
Ar. Omaha, Nebr. . . . .	7:00 a.m. . . . .	Wed. . . . .	Un. Pac. Sys.
Ar. Chicago, Ill. . . . .	7:45 p.m. . . . .	Wed. . . . .	C. & N. W. Ry.

### Cost of Complete "ZRG" Circle Tour

FROM CHICAGO, RETURNING TO CHICAGO

	With Rail Ticket	Without Rail Ticket
Two persons occupying a lower berth, each . . . . .	\$163.42	\$103.07
One person occupying a lower berth . . . . .	178.48	118.13
One person occupying an upper berth . . . . .	172.45	112.10
Two persons occupying a compartment, each . . . . .	190.60	130.25
Two persons occupying a drawing room, each . . . . .	201.60	141.25
Three persons occupying a drawing room, each . . . . .	183.85	123.50

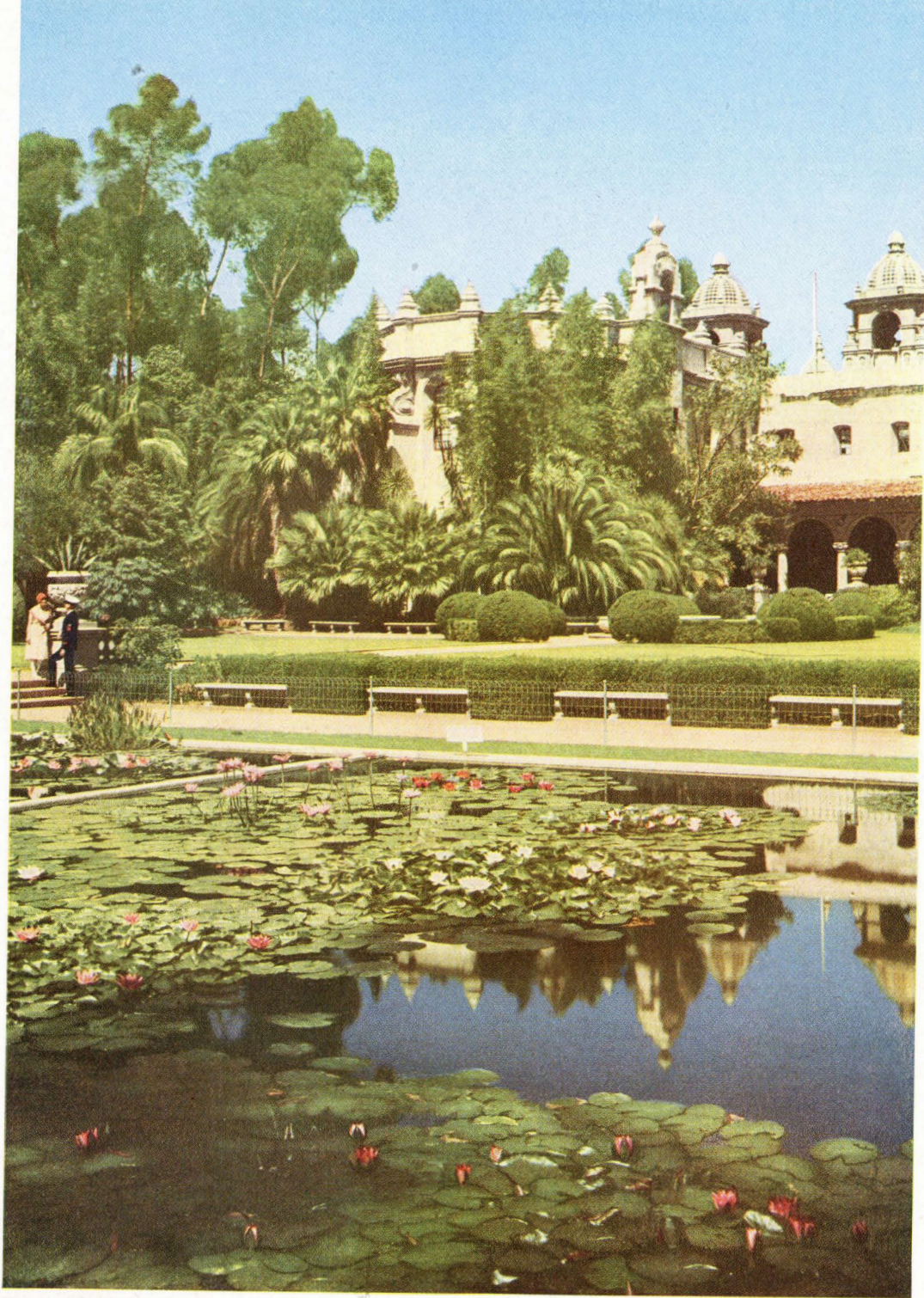
Additional compartment and drawing room rates, also rates for incomplete tour on application.

The above rates shown with and without railroad fare of \$60.35 from Chicago, are based on double room at Shirley-Savoy Hotel. For all-expense rates from other points (east of Chicago) add rail fare from home station to amount shown "Without Rail Ticket."



Tour "C" parties dine at this Agua Caliente Hotel





Natural Color Photograph

One reason for San Diego's great popularity is its beautiful tropical landscapings

Balboa Park ranks high among the innumerable magnificent parks of California cities. The reason should be quite apparent from the picture above of its Reflection Pool.



# TOUR "C"

## CALIFORNIA - OLD MEXICO - YOSEMITE

16 Days - - \$197.42 All-Expense

IF you have had the feeling that California is far away, too far to really enjoy unless you have a month or so to spend, may we correct that impression right here?

With no more than the usual two weeks vacation, you'll be surprised how effectively you can "do" California . . . and how inexpensive it really is, as shown in this presentation of our 1933 tour "C."

There's maximum pleasure in every hour you spend on a California trip. California with its sapphire skies . . . the blue Pacific . . . snow-capped mountain peaks—all bathed in the warm glow of the Southern Sun. Long sweeps of sandy beach, bordered by inviting, palm-lined boulevards . . . shady, winding paths through forests of majestic red-woods, past waterfalls, into deep canyons.

Riverside—home of the romantic Glenwood Mission Inn.

Los Angeles, the "City of Angels" . . . its boulevards . . . Spanish-type bungalows, lawns bordered with luxurious plant life . . . acres of orange and walnut groves . . . Hollywood, and the "movies."

To the west are the beach cities. Out beyond them rises famous Santa Catalina Island.

Down the coast to the South are numerous picturesque oceanside towns . . . fashionable La Jolla . . . San Diego. A few miles below San Diego, the Mexican border . . . Tijuana . . . Agua Caliente—brilliant, gay, the "Deauville of America."

Yosemite, the beautiful, is another of the West's wonderlands. The Valley—lovely, green, pine-needle carpeted—is watched over by majestic granite domes, fringed by feathery waterfalls and stupendous cataracts. And to the south of the valley—Mariposa Grove of Big Trees—Nature's most unusual show of living wonders . . . the world's oldest, tallest trees.

And San Francisco . . . the largest city of northern California. Its great harbor brings to its streets the people of every nation.

One of the most vivid memories of San Francisco that is carried away by the visitor is that of its Chinatown, the largest outside of China, an entire large district whose teeming population is Chinese.

Across the bay to the north is lofty Mt. Tamalpais, with the red-woods of Muir Woods in a valley between. Eastward, beyond another arm of the bay, are Oakland and its thriving industries; Berkeley, the white campanile of the University dominating the campus; Alameda, a charming residential town.

Study carefully the many features presented in the pageant of vacation treats on Overland Route "C" tours this summer. Visit California this year at a bargain cost which may never be duplicated.



## DAY BY DAY STORY OF "C" TOURS

**Saturday** The train selected for your trip across the country to California is the luxurious Los Angeles Limited which provides barber, maid, valet, bath. You leave Chicago in the evening via the Chicago & North Western Railway, using this pioneer western road as far as Omaha.

**Sunday** A brief pause at Omaha and then straight west via the Union Pacific System's superlative roadbed following the cool, short, most direct and scenic route to the Pacific Coast.

**Monday** In the morning you will enjoy beautiful Weber Canyon through which you pass before entering Ogden. A brief pause in Ogden, and in Salt Lake, then skirting the shores of Great Salt Lake, your splendid train speeds across the great open spaces that separate the Wasatch Mountains of Utah from the Pacific Coast Ranges.

**Tuesday** Motoring from the train to the Glenwood Mission Inn at Riverside, for breakfast, California greets you in all her glory. Spanish architecture, palm-studded boulevards, eucalyptus and feathery pepper trees, the mountains just beginning to peek out of their mantles of mist. Breakfast over, you are shown through the fascinating show-rooms, halls and corridors of the romantic Inn, then motor away to Los Angeles for luncheon, going by way of the Foothills Boulevard with a stop en route at an orange packing plant. Luncheon at the Hotel Alexandria, your Los Angeles headquarters (room with bath.)

The afternoon is free until 5:00 p.m., when you leave on a motor trip through Old Town—Mexican, Italian and Chinese quarters. Dinner is served at El Paseo Inn in a carnival atmosphere created by Spanish-Mexican entertainers. Before returning to your hotel, your trip takes you to Lookout Point overlooking brilliant Hollywood and Los Angeles.

**Wednesday** An all-day motor trip. San Gabriel and its Old Mission, Glendale with its unique Forest Lawn Memorial Park, lovely Pasadena. Luncheon with the "stars" at



Your day at Catalina will be long remembered



Movies in the making are fascinating



the Universal Cafe in Universal City then a tour of the studio. Returning, your route is through Hollywood, Beverly Hills with its "movie" mansions, the beach city of Santa Monica, Soldiers' Home.

**Thursday** An ocean trip to Santa Catalina, with its bustling town of Avalon clutching the steep slopes of the island. Luncheon at the Hotel St. Catherine . . . a trip over the beautiful submarine gardens in a glass bottom boat . . . then back across the Pacific's lane to Los Angeles Harbor and to your hotel for dinner.

**Friday** A day of rest. Breakfast, luncheon and dinner served at the Alexandria, but you are free to do as you please the entire day.

**Saturday** After breakfast, away by motor bus en route to San Diego. Through Long Beach, along the Coast Highway past the rare Torrey Pines, through lovely LaJolla, arriving at the U. S. Grant Hotel in time to leave your luggage and continue on across the border into Old Mexico for luncheon at Agua Caliente. A feature of luncheon here is the spectacular floor show. Returning to San Diego you stop-over at Tijuana, then travel over Silver Strand to Coronado and the ferry which carries you back to San Diego and your hotel for dinner and overnight.

**Sunday** Breakfast and luncheon at your hotel, the U. S. Grant, and the morning is devoted to a drive around the city including Old Town, Ramona's Marriage Place, Balboa Park, and Point Loma with its Marine Barracks, Naval Training Station and Flying Fields. Return to Los Angeles by motor bus in the afternoon, in time to step aboard your train for dinner in the dining car en route to Yosemite.

**Monday** Arriving Merced you continue on via the Yosemite Valley Railroad to El Portal where roomy motor busses await your arrival to carry you to Curry Lodge—your park headquarters. In the afternoon a trip around the valley floor by bus unfolds the resplendent region in all its loveliness . . . El Capitan, Yosemite Falls, Sentinel Rock, Mirror Lake, Happy Isles. Dancing and entertainment enliven the evening hours, the feature of which is the unique "Fire Fall" from Glacier Point.



San Francisco's Chinatown will intrigue you



You drive through "Wawona" in Mariposa Grove—Yosemite National Park





Natural Color Photograph

Half-Dome . . . just one of Yosemite's treasures

**Tuesday** Nothing planned for the morning. Take your choice of innumerable activities. In the afternoon you are treated to a drive to Mariposa Grove of Big Trees, the world's oldest, tallest trees. Dinner at Curry Lodge and then depart for El Portal, board your Pullmans and travel overnight to Oakland.

**Wednesday** Arriving Oakland after breakfast in the diner, you are ferried across the bay to San Francisco. Headquarters at the Hotel Stewart (room with bath). After luncheon at the hotel, a thirty-mile drive including the business and residential districts of San Francisco, Civic-Center, Twin Peaks overlooking the entire bay region, Golden Gate Park, Cliff House, the Presidio, Mission Dolores, and



terminating at fascinating Fisherman's Wharf. Dinner this evening will be served aboard a palatial Dollar Steamship Trans-Pacific Liner, with "all the trimmings." Then a visit to Chinatown and return to your hotel.

**Thursday** All day is left open. Follow your own inclinations. In the late afternoon you check out, ferry across the bay to Oakland and settle down on the San Francisco-Overland Limited for a leisurely dinner and the start of your journey home.

**Friday-Saturday** En route east on the San Francisco Overland Limited, finest and fastest train between San Francisco and Chicago. Via the Overland Route, of course—direct, scenic. Greatest single feature of the train trip?—"Going to sea by rail" across Great Salt Lake, entering Ogden.

**Sunday** Arrive Chicago after breakfast . . . then home.

### "C" Circle Tours Leave Chicago as follows:

Tour	Tour	Tour
C-1 . . . . . Sat. July 1	C-2 . . . . . Sat. July 15	C-3 . . . . . Sat. July 29
Lv. Chicago, Ill. . . . .	9:35 p.m. . . . .	Sat. . . . . C. & N. W. Ry.
Ar. Omaha, Nebr. . . . .	9:40 a.m. . . . .	Sun. . . . . C. & N. W. Ry.
Lv. Omaha, Nebr. . . . .	10:05 a.m. . . . .	Sun. . . . . Un. Pac. Sys.
Ar. Riverside, Calif. . . . .	6:45 a.m. . . . .	Tue. . . . . Un. Pac. Sys.
Lv. San Francisco, Calif. . . . .	6:20 p.m. . . . .	Thu. . . . . Sou. Pac. Ry.
Ar. Omaha, Nebr. . . . .	8:10 p.m. . . . .	Sat. . . . . Un. Pac. Sys.
Ar. Chicago, Ill. . . . .	9:15 a.m. . . . .	Sun. . . . . C. & N. W. Ry.

### Cost of Complete "C" Circle Tour

#### FROM CHICAGO, RETURNING TO CHICAGO

	With Rail Ticket	Without Rail Ticket
Two persons occupying a lower berth, each . . . . .	\$197.42	\$116.92
One person occupying a lower berth . . . . .	219.35	138.85
One person occupying an upper berth . . . . .	210.57	130.07
Two persons occupying a compartment, each . . . . .	236.98	156.48
Two persons occupying a drawing room, each . . . . .	253.47	172.97
Three persons occupying a drawing room, each . . . . .	227.47	146.97

Additional compartment and drawing room rates, also rates for incomplete tour on application.

The rates shown above with and without railroad fare of \$80.50 from Chicago are based on double rooms with bath at all Hotels. For all-expense rates from other points (east of Chicago) add rail fare from home station to amount shown "Without Rail Ticket."

### If Time Permits—Hawaii

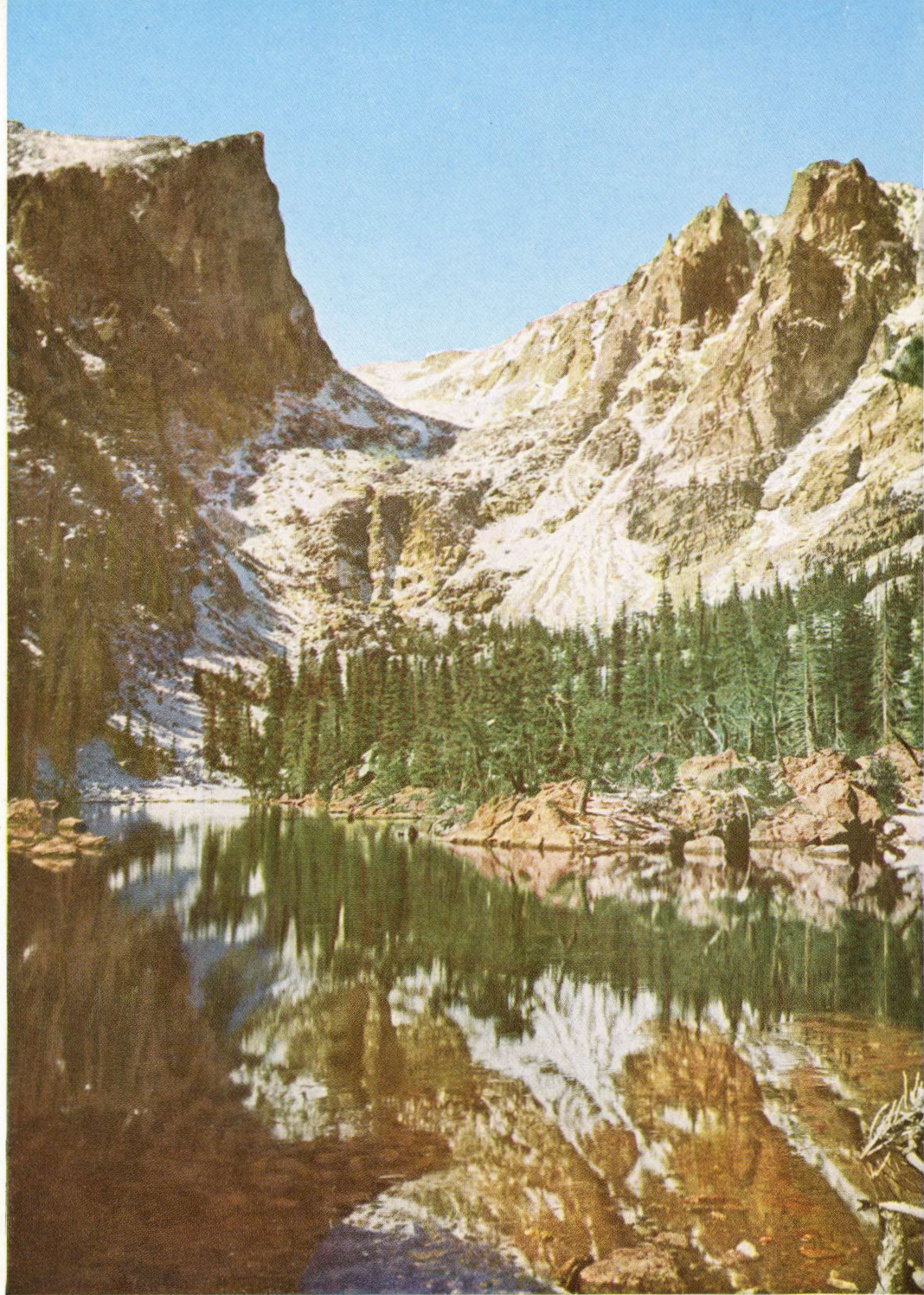
All inclusive tours to Hawaii have been arranged in connection with our all-expense California tours. These are most ideal trips for which the finest of Trans-Pacific steamers will be used.

In Hawaii life seems most serene . . . the moonlight even fairer . . . the waters off the beach of softer touch. In the halls of great hotels the famous of the world are seen; beneath the palms are lovers seated; and over all there breathes the mystic spell of Island music, played by native boys when Even-tide has come.

No place in the world can quite compare as a playtime land. With ocean currents sweeping by and the tempered Trade Winds overhead, the heat and cold of other lands is never known and the only use of charted months is to mark the passing of the years.

Ask for complete information regarding these all-inclusive tours to Hawaii. Their low rates will surprise you.





Natural Color Photograph

Dream Lake is typical of Rocky Mountain retreats

The towering peaks of the glorious "Rockies" look even more magnificent when mirrored in the myriad lakes hidden away off the beaten paths



# COLORADO "SPECIALS"

IN addition to the tours presented in this book for your selection, each year the Department of Tours operates a series of "Special" Colorado tours on a similar escorted, all-expense basis. These trips are planned and presented to our patrons on the same cut-to-cost basis as all of our tours.

Colorado, where the West is nearest, presents opportunities for enjoying a taste of the rugged "Rockies" at a cost, in most cases, less than that of a vacation nearby . . . less, probably than the amount provided in your budget for a summer outing.

Endless variety of out-of-doors sports and pleasures are yours in Colorado—mountain climbing, fishing, golf, bathing, camping, hiking, horseback riding. Imagine the thrill of your favorite pastime in a region so superbly picturesque that pen description will scarcely do it justice.

Colorado's mountains are criss-crossed by countless miles of highways, foot trails and saddle trails. You can relax—you can quiet your overwrought nerves—and you can come back feeling "fit as a fiddle" even though your time is limited.

If, perhaps, even the unusual rates shown in this book are more than you care to invest in vacation pleasure this year, ask for a copy of our Colorado Tour leaflet. We'll forward one on request.

Gaunt, grim Longs Peak dominates the Range

Natural Color Photograph





## GENERAL INFORMATION

**Why You Should Join an "Overland Route" Circle Tour**—They offer you "The Best of the West" at the least possible cost. You have the great advantage of knowing at the outset the exact total cost of your trip. The tours are planned with every care for your comfort, convenience and pleasure. All of the details are arranged in advance and are carefully carried out by our representative, *your escort*, with the party. He relieves you of all the anxieties of the independent traveler. You are, in fact, more independent in a real sense than the so-called independent traveler as *you* are entirely free to enjoy to the fullest extent the pleasures of your trip. Go on an "Overland Route" Circle Tour this summer and make the most of your vacation!



**Tour Costs Are All-Inclusive** on all "Overland Route" Circle Tours, as every necessary item of expense incident to the trip is included. There are no extras, except individual tips, which are considered purely personal.

**Save to Travel** and insure a carefree western vacation. Here is an excellent plan for making periodical deposits until the total sum that you require has been saved. This method of saving-to-travel is easy and practical, and, if followed systematically, will provide ample funds to cover all vacation expenses. Your initial deposit can be made to any representative of the Chicago & North Western Railway, the Union Pacific System or the Department of Tours, listed herein. Subsequent deposits can be handled through any of these representatives or by special arrangement through your home town railroad ticket office. Complete details will be gladly given upon request.



**Rates for Children** under twelve years of age will be furnished upon request. They are entitled to half fare railroad transportation and various other reductions in tour privileges.



**The Woman Who Travels Alone** is sometimes hesitant about taking an extended vacation trip. "Overland Route" Circle Tours offer an opportunity to bridge this difficulty and she can enjoy the trip of a lifetime amid congenial surroundings. The escort will introduce her to the other members of the tour party and will also look after her tickets, baggage, etc., insuring her against vexation and annoyance. Hundreds of women, as individuals, have joined our tours to avail themselves of a real, carefree vacation. The business man who cannot himself take a summer vacation can, with a feeling of complete security, send the women folks of his family on our escorted tours to the National Parks.



**Dining Car Meals** on "Overland Route" Circle Tours are tastily prepared and served with a smile. The service, which is comparable with the best metropolitan hotel standards, adds to the pleasure of your trip.



**Hotels and Lodges** in all National Parks are under the jurisdiction of the National Park Service, Department of the Interior, who require that all visitors to the Parks must be accommodated. Consequently, single rooms are not always available.

In Yellowstone you have the choice of two types of accommodations, the rustic lodges or the hotels. The rates via the hotels are based on minimum accommodations. Rooms with bath are usually available at an additional charge of \$2.00 to \$4.50 per day per person.

In the Utah-Arizona Parks the popular rustic cabins are used and rates are based on minimum accommodations. De Luxe Cabins with bath are available, if arranged in advance, at an additional charge of \$2.75 to \$6.50 per day per person.

In Rocky Mountain National Park our tour rates are based on minimum accommodation, however rooms with bath are available at an additional charge of \$1.00 to \$2.00 per day per person.

In Yosemite, the popular rustic cabins of Curry Lodge are used and the tour rates are based on minimum rate accommodations. De Luxe Cabins with bath are available at an additional cost of from \$1.50 to \$3.50 per person.

When passengers request reservation of rooms with bath in National Parks shown above, this department will gladly ask for such accommodations; however, the additional charge involved must be paid direct by passenger to each hotel or lodge.

Rates quoted for "YRG," "ZRG," "C" and Rocky Mountain National Park Extension Tours are based on double rooms with bath at all hotels except in the National Parks, which rates are outlined above. Single rooms with bath will be arranged for any passengers desiring them; however, the slight additional charge involved must be paid by the passengers direct to each hotel.



**Personal Service** Representatives of the Department of Tours, The Chicago & North Western Railway and the Union Pacific System, each a travel expert, are prepared to assist you in every way—supplying detailed information, making reservations and booking passengers for the tours. If you desire, a representative will call at your convenience to assist with your travel plans. There is no charge for this and it entails no obligation. It is just a part of the friendly service of this department.



**Service by Correspondence**—Feel free to write fully and ask any questions whatsoever in connection with any phase of western travel. With an intelligent understanding of the problems confronting persons wishing to secure the greatest benefits from a Western vacation trip, the Department of Tours is prepared to render a real service to those making inquiry by mail.

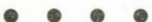


**Wearing Apparel**—Warm summer days suggest summer lightweight clothing, yet the cool, invigorating nights in the mountains make medium weight wraps necessary—top coats, sweaters, weatherproof outer garments. Outing clothes; knickers, jackets, stout shoes or boots are a comfort. A pair of colored glasses will be invaluable.



**Baggage**—Trunks are unnecessary. A suit case or bag will hold sufficient clothing for your entire trip.

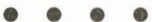
One piece of baggage weighing not more than twenty-five pounds will be carried free by the automobiles in the National Parks. If it is desired you may carry a small overnight bag with you, in addition to this. The Department of Tours assumes no responsibility for baggage or personal effects, but in the event of damage, delay or loss, will do all in its reasonable power to lessen the hardships incurred. Upon departure from Chicago your escort will furnish you with special baggage tags, bearing your name and address. These tags should be attached to all baggage.



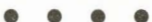
**Mail and Telegrams** should be addressed to the various hotels shown in the "Day by Day" Story of the Trip. Specify, "Member of C. & N. W.-Un. Pac. Overland Route Tour "Y-1," "Z-1," or whatever the particular designating letter and number may be. The Post Office Address of all hotels and lodges in Yellowstone Park, is Yellowstone National Park, Wyoming. In the Utah-Arizona Parks, addresses are as follows: El Escalante Hotel, Cedar City, Utah; Zion Park Lodge, Zion National Park P. O., Utah; Grand Canyon Lodge, Kaibab Forest, P. O., Arizona; Bryce Canyon Lodge, Bryce Canyon P. O., Utah.



**How to Join Our Tours**—Persons desiring to join an "Overland Route" Circle Tour should send their names to be registered as early as possible. Simply fill in the reservation blank on inside of back cover, and mail to any representative listed on page 46 or 48, being particular to supply all the information requested thereon. Reservations will then be made. Remittance should be made not later than ten days before departure of tour, but when this is inconvenient, we will upon request, hold reservations longer. Persons prevented from going may secure refund in full, provided reservations are cancelled before 1:00 P.M. on date of departure.



**Purchase Railroad Ticket at Your Home Station**—Passengers coming from points other than Chicago may join our tours at Chicago or at any regular stopping point en route. To obtain full benefit of the low round-trip summer tourist (season) railroad fare or of special 45-day low fare in effect from points east and southeast of Chicago, railroad tickets should be purchased from home station, reading via the route of the tour, as shown on page 46.



**Independent All-Expense Vacation**—will be arranged if you find it necessary to leave Chicago on some date other than those of our scheduled tours. You may follow the itinerary of any of our tours, lengthened or shortened, to suit your taste. Let us help you save on these independent, all-expense vacations, with all reservations made in advance for you.



**Note**—Rates and train schedules quoted herein are subject to such change as tariff or operating requirements, which cannot be foreseen at time of issuance of this publication, may later demand.



## Ticket Agents Please Note



**In Making Reservations**—for your patrons on one of our tours, you can handle direct with any representative of the Department of Tours, the Chicago & North Western Railway or the Union Pacific System, listed herein. In requesting reservation please give name in full, street and city address of each passenger and class of Pullman space desired. If your patron will make the entire trip with our party just specify "Entire tour" otherwise specify date and place patron will join and leave party. For passengers visiting Yellowstone National Park specify whether they will use lodge or hotel accommodations.



**Remittances Covering Tour Privileges**—shown under column headed "Without Rail Ticket" for the various tours may be made by prepaid or exchange order drawn on Chicago and North Western Railway, Chicago, forwarding order to office through which reservation is secured, at least six days prior to departure of tour.

### Routing of Tickets

**"Y" CIRCLE TOUR.**—Destination West Yellowstone, Montana. Routing—any direct line to Chicago, thence C. & N. W. Ry. to Council Bluffs; Un. Pac. Sys. to West Yellowstone. Returning—Un. Pac. Sys. to Council Bluffs; C. & N. W. Ry. to Chicago, and any direct line to home station.

**"YRG" CIRCLE TOURS.**—Destination West Yellowstone, Montana. Routing—any direct line to Chicago, thence C. & N. W. Ry. to Council Bluffs; Un. Pac. Sys. to West Yellowstone. Returning—Un. Pac. Sys. to Ogden; D. & R. G. W. Ry. to Denver; Un. Pac. Sys. to Council Bluffs; C. & N. W. Ry. to Chicago, and any direct line to home station.

**"YZ" CIRCLE TOUR.**—Destination West Yellowstone, Montana—Cedar City, Utah. Routing—any direct line to Chicago, thence C. & N. W. Ry. to Council Bluffs; Un. Pac. Sys. to West Yellowstone; Un. Pac. Sys. to Cedar City. Returning—Un. Pac. Sys. to Council Bluffs; C. & N. W. Ry. to Chicago, thence any direct line to home station.

**"Z" CIRCLE TOUR.**—Destination Cedar City, Utah. Routing—any direct line to Chicago; thence C. & N. W. Ry. to Council Bluffs; Un. Pac. Sys. to Cedar City. Returning—Un. Pac. Sys. to Council Bluffs; C. & N. W. Ry. to Chicago, thence any direct line to home station.

**"ZRG" CIRCLE TOUR.**—Destination Cedar City, Utah. Routing—any direct line to Chicago, thence C. & N. W. Ry. to Council Bluffs; Un. Pac. Sys. to Cedar City. Returning—Un. Pac. Sys. to Salt Lake City; D. & R. G. W. Ry. to Denver; Un. Pac. Sys. to Council Bluffs; C. & N. W. Ry. to Chicago, and any direct line to home station.

**"C" CIRCLE TOUR.**—Destination San Francisco, Calif. Routing—any direct line to Chicago, thence C. & N. W. Ry. to Council Bluffs; Un. Pac. Sys. to Los Angeles; Sou. Pac. Lines to San Francisco. Returning—Sou. Pac. Lines to Ogden; Un. Pac. Sys. to Council Bluffs; C. & N. W. Ry. to Chicago, thence any direct line to home station.

Do not issue coupons covering tours of Yellowstone, Zion, Bryce, Grand Canyon, Rocky Mountain or Yosemite National Parks, nor coupons covering side-trip Merced to Yosemite (El Portal), as these items are all included in tour privileges of the all expense tour rate.

## DEPARTMENT OF TOURS

of the

### CHICAGO & NORTH WESTERN RY.—UNION PACIFIC SYSTEM

No other western railroad has employed for thirty-three years a staff of travel experts who spend their entire time in arranging attractive vacation tours that provide—

"THE BEST OF EVERYTHING"

### ADDRESS ALL COMMUNICATIONS TO

JOHN C. POLLOCK, Manager — 137 South La Salle Street, Chicago, Ill.

### Department of Tours Representatives

Chicago, Ill. 137 South La Salle Street. Tel. Dearborn 2121

E. D. Poulson, Chicago Representative  
V. C. Kuhne, Traveling Agent

G. V. Weiss, City Passenger Agent  
L. W. Panfil, City Passenger Agent

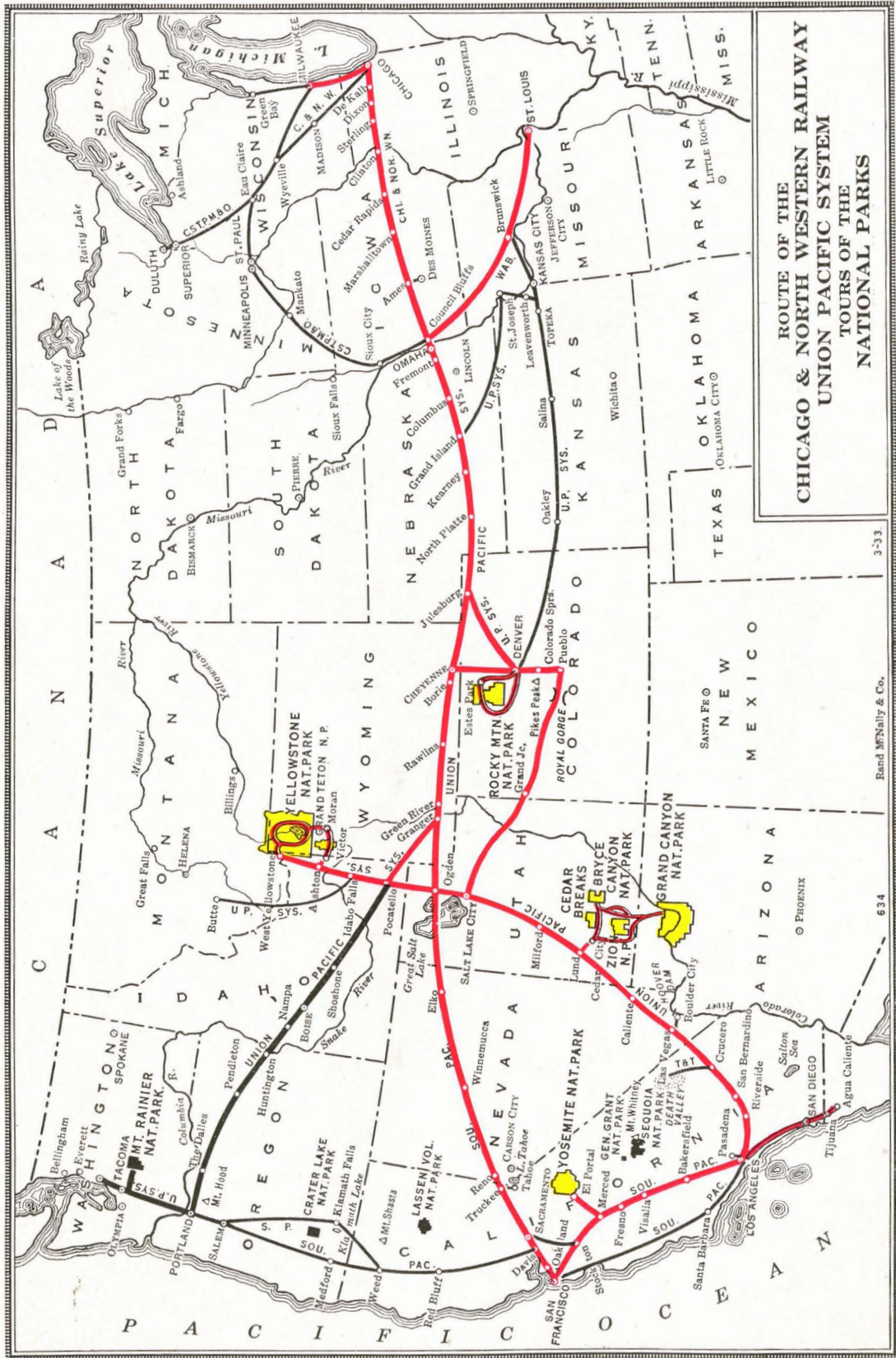
F. E. Colley, City Passenger Agent

MILWAUKEE, WISC. ....	231 East Wisconsin Ave. ....	M. A. Light, Traveling Agent
PHILADELPHIA, PA. ....	904 or 1002 Girard Trust Co. Bldg. .	Thos. Clift, Traveling Agent
BUFFALO, N. Y. ....	202 Ellicott Square Bldg. ....	A. J. Keating, Traveling Agent

### Tours and Tickets Everywhere

The functions of our Department are manifold. We prepare and furnish, without charge, schedules and routings for societies, clubs, fraternities and organizations which desire special-car or special-train trips to any part of the West. If you are planning to travel independently, or to organize a party, please call upon any representative listed herein to assist you.





ROUTE OF THE  
CHICAGO & NORTH WESTERN RAILWAY  
UNION PACIFIC SYSTEM  
TOURS OF THE  
NATIONAL PARKS

3-33

Rand McNally & Co.

634



# Ticket and Information Offices

## Chicago & North Western Line

ATLANTA, GA.—614 Volunteer Bldg.  
J. H. Schultz, General Agent.

BOSTON, MASS.—310 Old South Bldg.  
F. A. Haas, General Agent.

BUFFALO, N. Y.—202 Ellicott Sq.  
J. P. Fox, General Agent.  
C. B. Williams, Traveling Agent.  
A. R. Carlson, Traveling Agent.  
J. F. Swartout, City Agent.

CEDAR RAPIDS, IA., 326 First Ave., N. E.  
J. L. Bugar, D. F. & P. A.

CHICAGO, Ill.—137 South La Salle St.  
H. G. Van Winkle, Gen. Agent Pass. Dept.  
N. M. Kean, City Agent.  
E. E. Bogardus, City Agent.  
W. W. Pontious, City Agent.  
W. Evans, City Agent.  
C. E. Burgess, City Agent.

CINCINNATI, O.—202 Dixie Terminal Bldg.  
G. L. Helmstadter, General Agent.  
A. M. Linz, Traveling Agent.  
J. T. Hall, Traveling Agent.  
C. P. Humphreys, Traveling Agent.  
H. P. Dickson, City Agent.

CLEVELAND, O.—1106 Terminal Tower Bldg.  
H. E. Saumby, General Agent.  
S. L. Howells, Traveling Agent.  
R. C. Roberts, Traveling Agent.  
L. J. Jensen, City Agent.  
S. A. Keathley, City Agent.

DES MOINES, IA.—Chamberlain Hotel.  
M. L. Golden, D. F. and P. A.  
W. F. Winkrantz, General Agent.  
C. A. Hagberg, City Agent.

DETROIT, MICH.—619 Transportation Bldg.  
R. H. Miller, General Agent.  
F. J. Herhusky, Traveling Agent.  
W. F. Schlicht, Traveling Agent.  
W. W. Creighton, Traveling Agent.  
G. A. Culbertson, Traveling Agent.  
H. F. Williams, City Agent.  
L. J. Bozman, City Agent.

DULUTH, MINN.—424 West Superior St.  
J. D. Mahon, General Agent.

GREEN BAY, WIS.  
F. B. Martin, D. F. & P. A.

INDIANAPOLIS, IND.—308 Merchants Bank Bldg.  
V. A. Hampton, General Agent.  
R. L. Dickson, Traveling Agent.  
H. Metzel, Traveling Agent.

MADISON, WIS.  
J. W. Vilas, D. F. & P. A.

MILWAUKEE, WIS.—231 E. Wisconsin Ave.  
E. P. Rueter, Gen. Agent Pass. Dept.  
C. W. Carlsen, City Agent.  
F. E. Reuter, City Agent.

MINNEAPOLIS, MINN.—701 Marquette Ave.  
F. A. Brown, Gen. Pass. Agent.

NEW ORLEANS, LA.—930 Hibernia Bank Bldg.  
L. A. Uvaas, General Agent.  
O. L. Thompson, Traveling Agent.

NEW YORK, N. Y.—500 Fifth Ave.  
F. G. Fitz-Patrick, General Agent.

PEORIA, ILL.—213 Jefferson Bldg.  
T. A. Carney, D. F. & P. A.  
H. Eklund, Traveling Agent.  
W. J. Kessler, City Agent.

PHILADELPHIA, PA.—1002 Girard Trust Co. Bldg.  
C. N. Hale, General Agent.  
C. W. Hancock, Traveling Agent.  
C. A. Miller, Traveling Agent.  
J. G. Thomas, Traveling Agent.  
C. E. Anderson, City Agent.

PITTSBURGH, PA.—212 Oliver Bldg.  
A. O. Olson, General Agent.  
E. W. Fiala, Traveling Agent.  
R. W. Phelps, Traveling Agent.  
E. A. Kempfer, City Agent.

ST. LOUIS, MO.—401 Boatmen's Bank Bldg.  
H. L. Hammill, General Agent.  
H. A. Hancock, Traveling Agent.  
E. C. Crow, Traveling Agent.  
R. D. Blanford, City Agent.

ST. PAUL, MINN.—81 East 5th Street.  
G. H. Feyder, Ass't Gen. Pass. Agent.

SIoux CITY, IA.—522 Nebraska St.  
O. C. Scherer, D. F. & P. A.

R. THOMSON Passenger Traffic Manager Chicago, Ill.	A. R. GOULD Ass't Passenger Traffic Manager Chicago, Ill.
M. R. LEAHY General Passenger Agent Chicago, Ill.	
Chicago, St. Paul, Minneapolis & Omaha Ry.	
E. L. PARDEE Passenger Traffic Manager St. Paul, Minn.	W. L. MANSFIELD General Passenger Agent St. Paul, Minn.

## Chicago & North Western Line

## Union Pacific System

ATLANTA, GA.—1232 Healey Bldg.  
W. C. Elgin, General Agent.  
P. S. Smith, Trav. Frt. and Passenger Agent

BOSTON, MASS.—207 Old South Bldg.  
Willard Massey, General Agent.  
T. C. Wallace, Trav. Frt. and Passenger Agent.  
G. A. Oulton, Freight and Passenger Agent.  
A. C. Walker, City Passenger Agent

CHICAGO, ILL.—6 South LaSalle St.  
A. G. Bloom, Gen. Agent Pass. Dept.  
William Warner, City Passenger Agent.  
H. G. Larimer, City Passenger Agent.  
E. E. Robertson, Traveling Passenger Agent.  
R. C. Hartell, City Ticket Agent.  
I. D. Kessler, Passenger Agent.

CINCINNATI, O.—705 Dixie Terminal Bldg.  
F. B. Swope, General Agent.  
J. Stanley Orr, Dist. Passenger Agent.  
Wm. Heatherington, Trav. Frt. and Passenger Agent.  
F. G. Busch, Trav. Frt. and Passenger Agent.  
J. R. Livsey, Trav. Frt. and Passenger Agent.

CLEVELAND, O.—1006 Terminal Tower Bldg.  
W. H. Benham, General Agent.  
R. E. Burt, Traveling Passenger Agent.  
Edwin H. Allen, Trav. Frt. and Passenger Agent.  
A. G. Herbstler, City Passenger Agent.

DES MOINES, IA.—407 Equitable Bldg.  
Fred P. Stafford, General Agent.  
R. L. Henry, Trav. Frt. and Passenger Agent.

DETROIT, MICH.—508 Transportation Bldg.  
A. R. Malcolm, General Agent.  
L. G. Meder, City Passenger Agent.  
J. G. Howey, Trav. Frt. and Passenger Agent.  
W. W. Hott, Trav. Frt. and Passenger Agent.  
A. J. Eckerle, Passenger Agent.

KANSAS CITY, MO.—805 Walnut Street.  
Seth C. Rhodes, Gen. Agent Pass. Dept.  
O. D. Crofut, Traveling Passenger Agent.  
C. F. Hallsman, Traveling Passenger Agent.  
E. M. Mattes, City Passenger Agent.

MILWAUKEE, WIS.—814 Warner Bldg.  
K. T. Mindemann, General Agent.  
G. J. Buckingham, Traveling Passenger Agent.  
C. C. Crouse, City Passenger Agent.

MINNEAPOLIS, MINN.—890 Northwestern Bank Bldg.  
E. H. Hawley, General Agent.  
A. J. Wintersteen, City Passenger Agent.

NEW ORLEANS, LA.—1001 New Orleans Bank Bldg.  
G. J. Garmon, General Agent.

NEW YORK, N. Y.—City Passenger Office, 521 Fifth Ave.  
H. A. Lawrence, Gen. Agent Pass. Dept.  
C. J. Smith, Traveling Passenger Agent.  
H. L. Gardner, City Passenger Agent.  
G. I. Giles, City Passenger Agent.  
J. M. Quade, Jr., City Passenger Agent.  
A. R. Wilkins, Passenger Agent.

OMAHA, NEBR.—1523 Farnam St.  
J. O. Goodsell, Gen. Agent Pass. Dept.  
C. H. Saltmarsh, City Passenger Agent.  
U. P. Headquarters, 1416 Dodge St.  
F. E. Watkins, Traveling Passenger Agent.  
E. C. Mallon, Traveling Passenger Agent.

PHILADELPHIA, PA.—904 Girard Trust Co. Bldg.  
H. L. Lauby, General Agent.  
Gordon G. Noble, Trav. Frt. and Passenger Agent.  
J. M. T. Fritz, Trav. Frt. and Passenger Agent.  
L. R. Tibke, City Passenger Agent.

PITTSBURGH, PA.—216 Oliver Bldg.  
John D. Carter, General Agent.  
Edward Emery, Dist. Passenger Agent.  
G. O. Hassenfritz, Trav. Frt. and Passenger Agent.

ST. LOUIS, MO.—203 Carleton Bldg.  
F. F. Robinson, General Agent.  
J. M. Rebmann, Traveling Passenger Agent.  
E. R. Field, Trav. Frt. and Passenger Agent.  
W. B. Markham, Trav. Frt. and Passenger Agent.  
J. J. McCarthy, City Passenger Agent.

TORONTO, ONT.—69 Yonge St.  
Geo. W. Vaux, General Agent.

W. S. BASINGER Passenger Traffic Mgr. Omaha, Neb.	C. J. COLLINS Ass't Passenger Traffic Mgr. Omaha, Neb.
D. S. SPENCER General Passenger Agent Salt Lake City, Utah	
J. P. CUMMINS General Passenger Agent Portland, Ore.	Geo. R. BIERMAN General Passenger Agent Los Angeles, Calif.

## Union Pacific System



# APPLICATION FOR RESERVATION

## DEPARTMENT OF TOURS

Chicago & North Western Ry.—Union Pacific System

.....

..... City ..... Date .....

Dear Sir:

Parties listed below wish to join Tour indicated. Leaving Chicago.....  
Date .....

Y		YRG		YZ		Z		ZRG		C	
---	--	-----	--	----	--	---	--	-----	--	---	--

(Insert tour number)

NAME

STREET ADDRESS

CITY

STATE

.....  
.....  
.....  
.....  
.....  
.....  
.....

Names and ages of any minors listed above.....

Will require Pullman space as indicated: (Show number of berths desired)

☐ Lower berth ☐ Upper berth ☐ Section  
☐ Section (occupied by one person) ☐ Compartment ☐ Drawing room

In Yellowstone Park ☐ Hotels  
☐ Lodges

☐ Will make Rocky Mountain-Estes Park Extension Tour.

When two or more in party state how members wish to be assigned to Pullman and hotel  
or lodge accommodations.....

.....

Will make complete tour.....  
(Yes or No. If "No," State After Remarks Your Plans)

Remarks:.....

.....

.....

.....

.....

Name.....

Address..... City ..... State .....

Detach and mail to any representative listed herein



