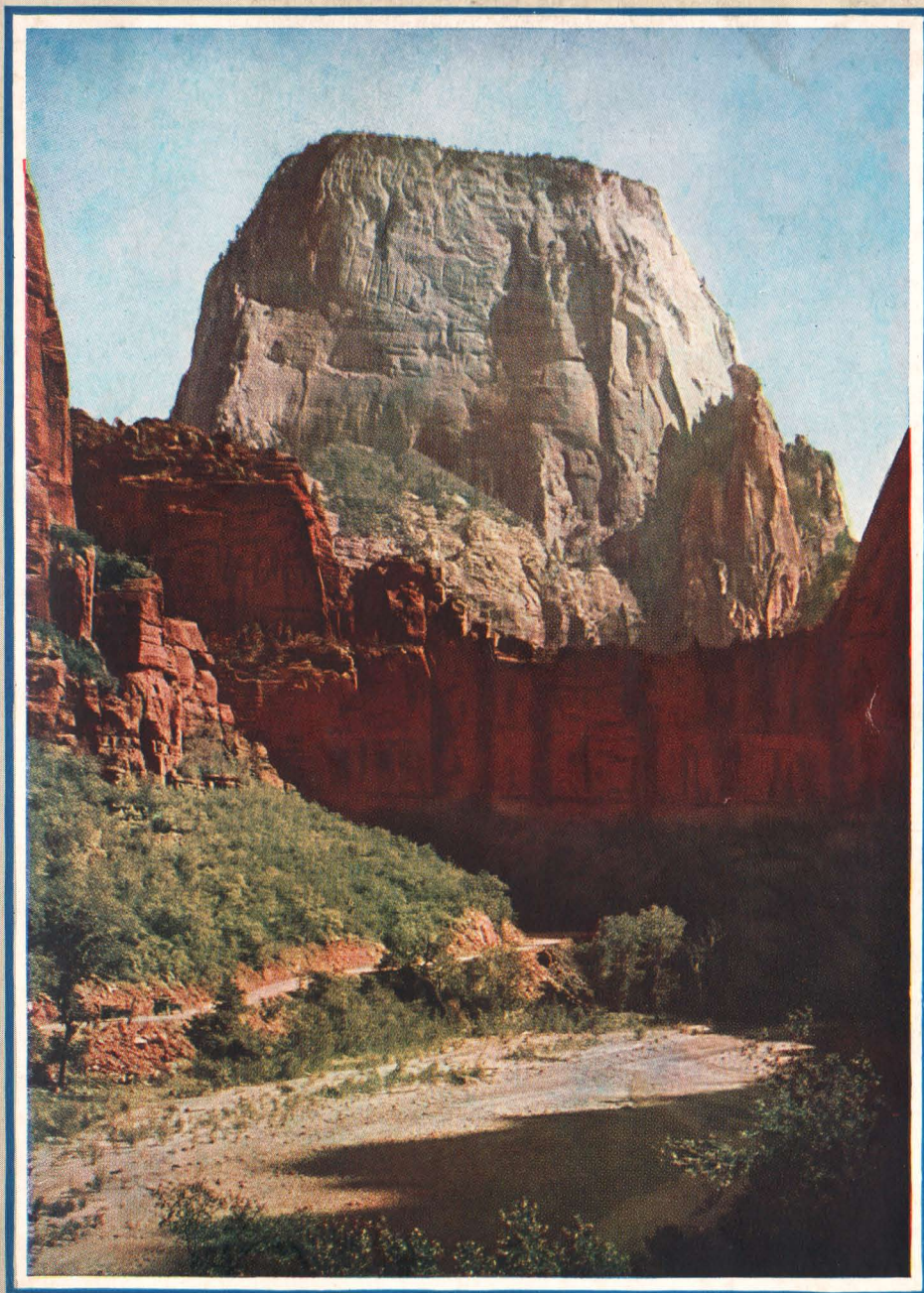


SUMMER TOURS

UNDER ESCORT



SEASON 1932



DEPARTMENT OF TOURS

CHICAGO & NORTHWESTERN RY.

UNION PACIFIC SYSTEM

SUMMER TOURS

UNDER ESCORT

YELLOWSTONE NATIONAL PARK
ROCKY MOUNTAIN NATIONAL PARK

ZION NATIONAL PARK

BRYCE CANYON NATIONAL PARK
GRAND CANYON NATIONAL PARK

MOUNT RAINIER NATIONAL PARK

YOSEMITE NATIONAL PARK

CALIFORNIA » » COLORADO

PACIFIC NORTHWEST » » CANADIAN ROCKIES

ALASKA



The
Ask Mr. Foster
Travel Service
REG. U. S. PAT. OFF.

ADAM,
MELDRUM &
ANDERSON CO.
BUFFALO, N. Y.

SEASON 1932

COPYRIGHT 1932 BY
J. L. BURGAR, MANAGER
DEPARTMENT OF TOURS
CHICAGO & NORTH WESTERN RY.
UNION PACIFIC SYSTEM
CHICAGO



YOSEMITE'S GRANITE GIANT—HALF DOME

CONTENTS

Let us be your Host this Summer.....	5
Yellowstone—Salt Lake City “Y” Circle Tours.....	6 to 8
Yellowstone—Salt Lake City—Royal Gorge—Colorado Springs—Denver “YRG” Circle Tours.....	9 to 12
Yellowstone—Salt Lake City—Ogden—Rocky Mountain National Parks— Denver “YR” Circle Tours.....	13 to 16
Yellowstone—Zion—Bryce Canyon—Grand Canyon National Parks—Cedar Breaks and Salt Lake City “YZ” Circle Tours.....	17 to 20
Zion—Grand Canyon—Bryce Canyon National Parks—Cedar Breaks— Salt Lake City “Z” Circle Tours.....	21 to 23
Zion—Grand Canyon—Bryce Canyon National Parks—Cedar Breaks— Salt Lake City—The Royal Gorge—Colorado Springs—Denver “ZRG” Circle Tours.....	26 to 29
Pacific Northwest—Mount Rainier and Jasper National Parks—Banff— Lake Louise “PNW” Circle Tours.....	30 to 33
California—Old Mexico—Yosemite National Park “C” Circle Tours.....	34 to 38
Pacific Northwest—Alaska—Canadian Rockies “A” Circle Tours.....	39 to 42
Colorado—“Where the West is Nearest”.....	43
General Information.....	44 to 46
Ticket and Information Offices.....	48
Reservation Blank.....	Opposite Page 48

The Color Illustrations in this Booklet

“Photographs tell the Truth.” Photographs in Natural Color show the living colors as they actually are.

Thanks to Color Photography, the Department of Tours is enabled this year to present nature’s masterpieces in the western wonderlands just as the eye sees them.

Each of the twenty-one color illustrations in this booklet are reproduced from “Natural Color Photographs.” Each accurately portrays the beauty of its subject with true fidelity.

“Beauty is truth—truth beauty . . .”—KEATS

WHEN plans for summer vacations are being made, I want to urge our American people to visit our national parks. These areas, mostly in the mountains, offer to visitors an ideal combination of superb scenery, healthful living conditions, and accommodations carefully planned to meet all requirements.

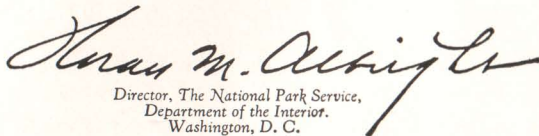
Throughout the season all of the great western railroads furnish special service on their park lines. The rates are very reasonable, schedules are planned to provide convenient connections between trains from different parts of the country, and the service itself is excellent. After more than fifteen years spent in almost constantly traveling about the United States, *I am more than convinced that the railroads furnish the most convenient and comfortable mode of transit.* Especially is this true within the last half dozen years, when many innovations in train service, all designed to increase the comfort of the rail traveler, have been installed.

The development of travel facilities to and in the national parks has reached the stage where the railroads, the operators of hotel, transportation, and other facilities within the parks, and the National Park Service of the Federal Government cooperate in insuring visitors the best possible results from a visit to the national parks in a minimum of time.

For the convenience of visitors on quick schedule, arrangements have been made whereby their trips in the park can be planned and tickets covering transportation and lodging purchased when the rail ticket is obtained. The park ticket covers regularly scheduled trips, approved by the National Park Service, and planned so as to include all the main points of interest.

Especially interesting is the conducted tour, a form of railroad service which entirely frees those using it from responsibility. Tickets for such tours cover railroad expenses, including meals, and the cost of the park tour. Reservations are made by the guide conducting the party, baggage is checked and moved, and everything possible done to insure a carefree vacation for the members of the party. This form of traveling is especially recommended for people traveling alone and for those making their first trips into the parks.

Whether only for transportation, for the planning of transportation and park visits and purchasing of tickets therefor, or for the conducted tour, *I can not too strongly recommend the service provided by the railroads.* Train travel in these days of modern, luxurious equipment is a restful prelude to a national park vacation.


Director, The National Park Service,
Department of the Interior,
Washington, D. C.



Let Us Be Your Host This Summer.....

Break away this summer. Go where you can find a complete change of scenery . . . where you can do just what you want to do . . . when you want to do it. Go West!

Make your plans early. And when you plan, let us help you to realize your dream of a perfect vacation—carefree, inexpensive. We know how. It's our business . . . has been for the past thirty-two years.

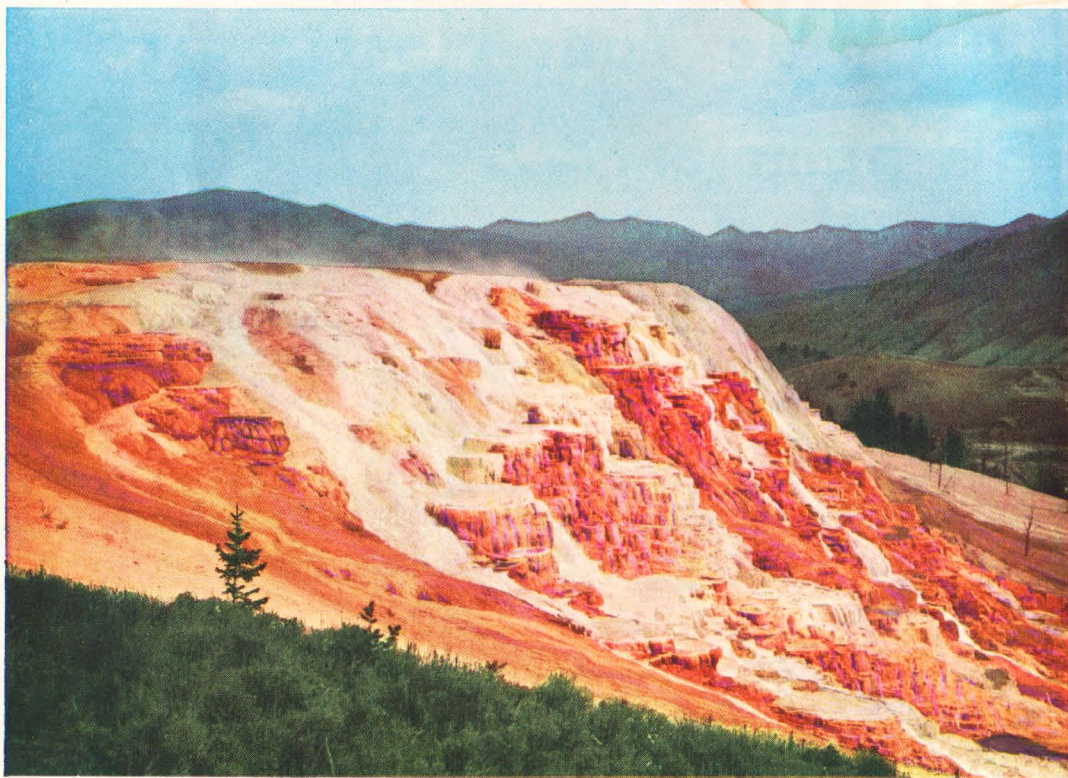
We have learned to anticipate your every travel desire and need. Our wealth of experience . . . our thorough knowledge of every nook and corner of the West . . . our complete travel service . . . all is yours for the asking.

In the following pages are a number of suggestions for your vacation itinerary—Overland Route Circle Tours. Each has been planned to include as many of the Wonderlands of the West as is possible within certain limits of time and cost . . . each designed to give you the *most* for the *least*.

Everything is arranged for you in advance. You travel by train . . . in supreme comfort . . . directly, quickly . . . adding days to your time in the regions you have chosen to see. You are assured of ample accommodations, in special Pullmans on the West's finest trains and in all hotels and lodges . . . with excellent food and plenty of it wherever you go.

You know exactly what it will cost before you leave. A courteous and competent escort accompanies you all the way to relieve you of every detail. Not a worry . . . not a care . . . nothing to do but enjoy yourself.

So this summer go West! Travel with us on an Overland Route Circle Tour. As our guest you'll have the vacation of a lifetime—complete, inexpensive, glorious!



YELLOWSTONE'S MAMMOTH HOT SPRINGS

NINE DAY "Y" CIRCLE TOUR

Yellowstone National Park—Salt Lake City

Imagine being able to see all of Yellowstone—with plenty of time to enjoy its every feature, its every mood—and with the added delight of a day in fascinating Salt Lake City—all in the brief space of nine thrilling days from Chicago back to Chicago. *The "Y" Circle Tour offers you just this . . . and it's inexpensive.*

Via the Overland Route you travel across the richest agricultural region in the world. You follow the trails blazed by the early pioneers and traversed, later, by the Mormons, the gold-seekers, the Overland Stage Coach and the Pony Express—the shortest, most scenic route to the Pacific Coast. When you visit Yellowstone you will want to see it all, of course. Our "Y" Circle Tours, in fact, all of our tours that include Yellowstone, enter the Park at West Yellowstone. They make a complete circle, visiting all of the Park's innumerable show places—the geysers, Yellowstone Lake, the canyon and falls, Mammoth Hot Springs. If you wish, you may ride saddle over the trails . . . try your luck at trout fishing . . . or perhaps find some shady retreat and revel in the magnificence of it all as you relax in solid comfort.

Yellowstone's evenings are packed with pleasure as well. Dancing at the hotels and lodges . . . excellent entertainment . . . interesting talks by ranger naturalists.

Then Salt Lake City with its numerous shrines sacred to the memory of the early Mormon settlers. All within a limited amount of time and at exceedingly low cost.



CANYON AND FALLS OF THE YELLOWSTONE

Day by Day Story of "Y" Circle Tour

SATURDAY—With every detail cared for by a staff of travel experts who attend you at the Chicago & North Western's Chicago Passenger Station, you leave on the Portland Rose, one of the "Overland Route's" famous fleet of splendid trains. All night you travel across agricultural Illinois and Iowa, pausing Sunday morning at Omaha where your train begins its swift flight over the Union Pacific's ribbons of steel, direct to Yellowstone. You will enjoy the roomy observation car.

SUNDAY—Across Nebraska's grain laden fields and into Wyoming—Cheyenne, Laramie, the famous Sherman Hill and Creston where you cross the continental divide. Your dining car meals, an important part of any trans-continental rail trip will be a source of particular joy to you all the way via the "Overland Route"—order whatever you wish and simply sign the guest check. This is a feature of all "Overland Route" Circle Tours.

MONDAY—You arrive West Yellowstone, Mont., in the afternoon after traversing a mountainous region whose ever changing series of panoramas is unsurpassed on any other route. The stately Targhee Forest—Rea's Pass—Warm River Canyon, each a scenic spectacle of the first

magnitude, are a fitting prelude to Nature's treasure chest which awaits you in Magic Yellowstone.

The comfortable motor busses of the Yellowstone Park Transportation Co. which carry you to Old Faithful for your first overnight stop in this weird region, pause en route at Excelsior Geyser, Fountain Paint Pot, Morning Glory Pool and other interesting formations.

In the evening watch the bears—dance to the strains of a melodious orchestra—enjoy the entertainment around the camp fire or just rest and watch Old Faithful with a giant searchlight playing on it—a truly weird scene.

TUESDAY—"Old Faithful" is the favorite among the geysers of this thrilling region because of its regularity. You have all the morning to explore this "weirdest spot in the Universe" either conducted by your escort, by a member of the National Park Service, or "go-as-you-please." In the afternoon you motor across the continental divide to lovely Yellowstone Lake where you spend the night.

WEDNESDAY—In the morning en route to the Canyon, you stop at magic Mud Geyser, arriving at the Canyon in

time for luncheon. Words fail you—you catch your breath at each new view of the Yellowstone Falls in its stupendous setting, as you make your way from one vantage point to another—afoot—in the saddle or by bus.

THURSDAY—For the more venturesome, “Uncle Tom’s Trail” to the foot of the lower falls offers a challenge. After luncheon, again by bus, you set out for Mammoth Hot Springs by way of Dunraven Pass, stopping en route at Tower Falls. You spend the night at Mammoth which is the headquarters not only for the park’s hotel, lodge and transportation companies but also for the park superintendent.

FRIDAY—All morning is yours to spend as you wish, inspecting the terraces of Mammoth Hot Springs, which since the destruction of the pink and white terraces of New Zealand, stand without counterpart in the world. After luncheon you motor past dazzling Obsidian Cliff, see Gibbon Falls and hundreds of other interesting sights—stop at Norris Geyser Basin and arrive at West Yellowstone for dinner in the Union Pacific’s attractive dining room.

A comfortable over-night journey by train brings you to Salt Lake City.

SATURDAY—Arriving in Salt Lake City, you breakfast at the beautiful Hotel Utah, your headquarters for the day. An automobile tour of the city gives you an intensely interesting picture of historic as well as modern Mormon culture and terminates at the Mormon Temple Grounds for a delightful noon-day organ recital in the tabernacle. After luncheon at the Hotel Utah which is directly across the way from the Temple Grounds, you motor to Saltair Beach, situated on Great Salt Lake. Ample time is allowed to enjoy a dip in the buoyant waters of the most unique salt sea on the globe—returning to your train for the journey “back home.”

SUNDAY—En route across Wyoming and Nebraska via the “Overland Route” surrounded by every travel luxury of the famous Los Angeles Limited. Again the delicious dining car meals add infinitely to your contentment.

MONDAY—After breakfast, in the diner, you arrive in Chicago refreshed and reluctant to leave the pleasant companions who have helped materially to make your trip most enjoyable.

“Y” Circle Tours Leave Chicago as Follows:

Tour		Tour		Tour		Tour	
Y—1.....	Sat., June 18	Y—3.....	Sat., July 2	Y—6.....	Sat., July 23	Y—9.....	Sat., Aug. 13
Y—2.....	Sat., June 25	Y—4.....	Sat., July 9	Y—7.....	Sat., July 30	Y—10.....	Sat., Aug. 20
		Y—5.....	Sat., July 16	Y—8.....	Sat., Aug. 6		

Detailed Schedule

Lv. Chicago, Ill.....	10:15 p.m.	Sat.	C. & N. W. Ry.	Lv. Grand Canyon.....	1:35 p.m.	Thu.	Automobile
Ar. Omaha, Nebr.....	9:45 a.m.	Sun.	“	Via Dunraven Pass stopping at Tower Falls.			
Lv. Omaha, Nebr.....	10:05 a.m.	Sun.	Un. Pac. Sys.	Ar. Mammoth Hot Springs.....	4:47 p.m.	Thu.	“
Lv. Cheyenne, Wyo.....	8:10 p.m.	Sun.	“	Lv. Mammoth Hot Springs.....	1:30 p.m.	Fri.	“
Lv. Green River, Wyo.....	4:30 a.m.	Mon.	“	Stopping at Norris Geyser Basin.			
Lv. Pocatello, Idaho.....	10:15 a.m.	Mon.	“	Ar. West Yellowstone, Mont.....	4:40 p.m.	Fri.	“
Ar. West Yellowstone, Mont.....	3:00 p.m.	Mon.	“	Lv. West Yellowstone, Mont.....	7:00 p.m.	Fri.	Un. Pac. Sys.
Five-Day Automobile Tour of Yellowstone National Park				Ar. Ogden, Utah.....	5:50 a.m.	Sat.	“
Lv. West Yellowstone, Mont.....	3:30 p.m.	Mon.	Automobile	Lv. Ogden, Utah.....	6:00 a.m.	Sat.	“
Stopping at Fountain Paint Pot and Great Fountain Geyser.				Ar. Salt Lake City, Utah.....	7:00 a.m.	Sat.	“
Ar. Old Faithful.....	5:30 p.m.	Mon.	Automobile	Headquarters at Hotel Utah—City Sightseeing trip in the morning—			
Lv. Old Faithful.....	1:50 p.m.	Tue.	“	Noon Organ Recital at Mormon Tabernacle. Trip to Saltair Beach			
Stopping at Thumb Paint Pots and Fishing Cone.				by automobile in afternoon.			
Ar. Lake.....	4:58 p.m.	Tue.	“	Lv. Salt Lake City, Utah.....	5:35 p.m.	Sat.	Un. Pac. Sys.
Lv. Lake.....	10:00 a.m.	Wed.	“	Lv. Cheyenne, Wyo.....	7:35 a.m.	Sun.	“
Stopping at Mud Geyser and Inspiration Point.				Ar. Omaha, Nebr.....	8:10 p.m.	Sun.	“
Ar. Grand Canyon.....	11:46 a.m.	Wed.	“	Lv. Omaha, Nebr.....	8:50 p.m.	Sun.	C. & N. W. Ry.
				Ar. Chicago, Ill.....	9:20 a.m.	Mon.	“

Cost of Complete “Y” Circle Tour

FROM CHICAGO, RETURNING TO CHICAGO

	With Rail Ticket	Without Rail Ticket
Two passengers occupying lower berth, each.....	\$142.48	\$ 83.13
One passenger occupying lower berth.....	158.36	99.01
One passenger occupying upper berth.....	152.00	92.65
Two passengers occupying compartment, each.....	171.35	112.00
Two passengers occupying drawing room, each.....	182.60	123.25
Three passengers occupying drawing room, each.....	163.94	104.59

Additional compartment and drawing room rates, also rates for incomplete tour on application.
The above rates, shown with and without railroad fare of \$59.35 from Chicago, are based on the “Lodge Way” through Yellowstone, rates “Hotel Way” \$8.50 higher.



GATEWAY TO COLORADO'S GARDEN OF THE GODS

TWELVE DAY "YRG" CIRCLE TOUR

Yellowstone—Salt Lake City—The Royal Gorge
Colorado Springs and Denver

Why not add three days to the pleasure of a vacation in Yellowstone and Salt Lake City so as to include a trip through the world famous Royal Gorge and a visit to Colorado Springs and Denver? It's well worth while and the additional cost is surprisingly little.

In Yellowstone you can forget yourself, your worries and cares . . . leave the hustle and bustle of city life behind . . . get "back to nature" for recreation or quiet meditation. Yellowstone's geysers, its mountains, its raging rivers and lovely lakes, its canyon and falls, its hot springs will captivate you . . . thrill you . . . quicken your pulse. And its cool, clean, invigorating air will give you "a new lease on life."

There are six geyser basins to command your attention, each containing a number of geysers, pools and springs. Old Faithful is the best known of all geysers. You can count on it to stage a performance within a few minutes of a specified time, approximately once every hour. Its impressive volume and the great height of its column contribute to its well-earned fame.

And once having seen it, who could forget Yellowstone Lake, entirely surrounded by magnificent mountains? Or the canyon . . . the upper falls . . . the lower or great falls?—certainly no picture or description can portray their stupendous magnitude. And Mammoth Hot Springs,

fantastic in the extreme, with its terraces so vividly colored that they seem to vibrate and glow in the sunlight!

In contrast to the soft, powdery expanse of Yellowstone's colorful canyon, the sheer, solid walls of the Royal Gorge will have an added charm as your train winds its way through this glistening chasm en route to Colorado Springs.

Colorado Springs with its Pikes Peak, its Garden of the Gods, Seven Falls, and miles of splendid mountain highways, is a year 'round host to thousands of enthusiastic lovers of outdoors in an invigorating climate and scenic setting.

Denver, with its great system of mountain parks is equally famous as a magnet for travelers from the entire nation.

Join one of our "YRG" Circle Tour parties this summer. Close your desk, pack your bag, climb aboard a fine, fast train—we do the rest.

Day by Day Story of "YRG" Circle Tour

SUNDAY—Present yourself at the "Gateway to all the West"—Chicago & North Western's splendid Chicago Passenger Station. Members of our staff will be waiting to assist you to get away to a perfect start. Settle down in comfort on the Portland Rose and prepare for a glorious ride across picturesque Illinois and Iowa.

MONDAY—The morning finds you speeding across Nebraska on Union Pacific's "finest roadbed in the country" . . . "meals that appeal" await you in the diner. Through regions famed in frontier history . . . across the Continental Divide at Creston, Wyoming.

TUESDAY—Through the depths of the Targhee Forest . . . over Rea's Pass . . . through Warm River Canyon

. . . the magnificent Tetons to the east . . . arriving West Yellowstone after luncheon in the dining car and step from Train to Bus.

You enter Yellowstone's exquisite arena at once as you motor to Old Faithful for your first night in the Park. Geyser basins . . . steaming pools . . . rushing rivers . . . restful mountain vistas surround you.

Plenty to do in the evening, with a special entertainment presented in the Recreation Hall at the Lodge . . . dancing at both Hotel and Lodge . . . Old Faithful Geyser performing under the glare of immense flood lights.

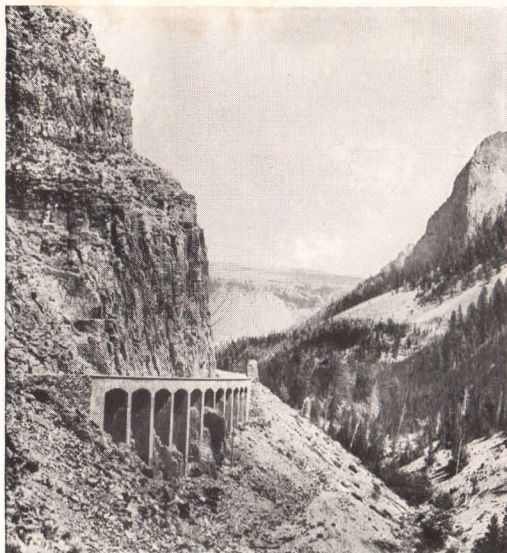
WEDNESDAY—"Ride your hobby"—hike out over the formation in a party conducted by one of the Rangers . . . join one of the saddle trip parties . . . motor out to the more secluded spots for a closer view of Nature's "convulsions" . . . swim in an outdoor pool fed by warm geyser waters. Do as you please in the morning. In the early afternoon you motor to Yellowstone Lake, crossing the Continental Divide at two points. Overnight at the Lake, and, as at Old Faithful, there's something doing for your entertainment every minute.

THURSDAY—Leave at 10:00 A.M. for the Grand Canyon where you arrive for luncheon. All afternoon and next morning to view the mighty falls in their gorgeous settings, from every vantage point. Saddle trips, motor trips, hiking parties—all sorts of ways to get around and plenty of time to see it all. And there's something about the atmosphere of Canyon that is particularly enchanting . . . makes the evening program seem more intriguing . . . the immense camp fire more scintillating . . . the music, the dance, more downright thrilling.

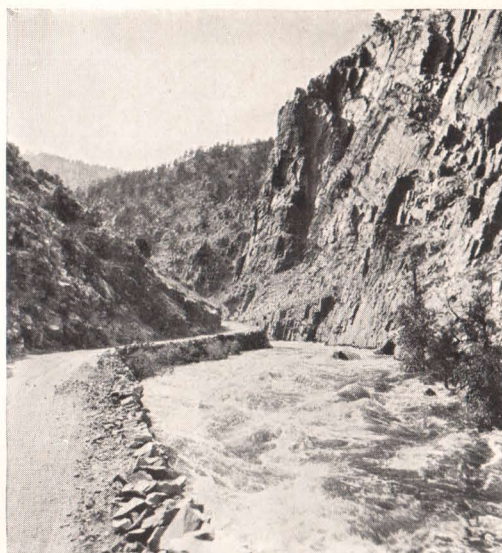
FRIDAY—After luncheon, en route to Mammoth Hot Springs, you have an opportunity of detouring by motor, at small additional cost, over Mt. Washburn for a commanding view of the entire Park. Your route also takes you to Tower Falls and along the rim of a far different, smaller, though just as lovely canyon of the Yellowstone River, as its Grand Canyon.



THE ROYAL GORGE DEFIES DESCRIPTION



YELLOWSTONE'S FAMOUS GOLDEN GATE



COLORADO'S BIG THOMPSON CANYON

SATURDAY—All morning to explore the delicately tinted hot spring formations. Luncheon over, you motor to West Yellowstone, stopping at Norris Geyser Basin en route. Leave at 7:00 P.M. for an overnight trip by train to Ogden, Utah.

SUNDAY—After breakfast at the Bigelow Hotel, Ogden, you enjoy a comfortable motor trip to beautiful Ogden Canyon, then by train to Salt Lake City, Utah's famous capital, arriving 10:35 A.M. "Seeing Salt Lake City" by motor . . . a visit to the Mormon Temple Grounds . . . noon organ recital at Mormon Tabernacle . . . a swim at Saltair Beach . . . dinner at the palatial Hotel Utah. Spend the evening hours as you please, and at 10:15 board train for a trip over the Denver & Rio Grande Western, through the Royal Gorge, to Colorado Springs.

MONDAY—The Royal Gorge! The towering heights of its walls, its dazzling beauty, the surging stream along whose banks your train travels, present a spectacle the beauty of which one never forgets. You arrive in Colorado Springs in the late afternoon and enjoy a restful overnight stay at the Antlers Hotel.

TUESDAY—A thrilling trip to Pikes Peak by motor in the morning . . . a treat indeed. In the afternoon another fascinating motor trip over the Circle Drive to the Garden of the Gods, Seven Falls and South Cheyenne Canyon. Leave Colorado Springs 6:50 P.M. for Denver, arriving 9:00 P.M., where room with bath awaits you at the Cosmopolitan Hotel.

WEDNESDAY—Denver, "the Mile-High City" . . . an inspiring all-day drive through the city's great mountain parks, including Lariat Loop Highway to Lookout Mountain and Bear Creek Canyon. Luncheon served at Troutdale-in-the-Pines. At 11:30 P.M. you leave, aboard the Overland Route's "Mountain Bluebird" for a restful trip back home.

THURSDAY—You'll enjoy the quiet comfort of your day en route across Nebraska and into Iowa, with a mid-afternoon pause at Omaha to stretch a bit. Tastily prepared meals in the diner add to your pleasure.

FRIDAY—Arrive Chicago, "North Western" Passenger Station at 7:00 A.M.

Estes-Rocky Mountain National Park Extension

(Arrangements Must Be Made at Time of Booking)

At best, vacation days in the mountains are all too short. In Denver, you are only a short scenic distance from one of the largest and most popular mountain playgrounds in the country—Estes-Rocky Mountain National Park.

If time permits—by all means extend your trip to include a visit to this glorious region. Motor through sheer, spectacular Big Thompson Canyon en route to the Park . . .

the sensational South St. Vrain Canyon returning to Denver . . . not to mention impressive Long's Peak and its numerous snow capped neighbors.

Plan to take advantage of this opportunity to visit Estes-Rocky Mountain National Park at very little added expense—only \$9.50. An escort will care for every detail during your entire stay.

"YRG" Circle Tours Leave Chicago as Follows:

TOUR		TOUR		TOUR		TOUR	
YRG-1	Sun., June 19	YRG-4	Sun., July 10	YRG-7	Sun., July 31	YRG-10	Sun., Aug. 21
YRG-2	Sun., June 26	YRG-5	Sun., July 17	YRG-8	Sun., Aug. 7	YRG-11	Sun., Aug. 28
YRG-3	Sun., July 3	YRG-6	Sun., July 24	YRG-9	Sun., Aug. 14	YRG-12	Sun., Sept. 4

Detailed Schedule

Lv. Chicago, Ill.	10:15 p.m.	Sun.	C. & N. W. Ry.
Ar. Omaha, Nebr.	9:45 a.m.	Mon.	"
Lv. Omaha, Nebr.	10:05 a.m.	Mon.	Un. Pac. Sys.
Lv. Cheyenne, Wyo.	8:10 p.m.	Mon.	"
Lv. Green River, Wyo.	4:30 a.m.	Tue.	"
Lv. Pocatello, Idaho	10:15 a.m.	Tue.	"
Ar. West Yellowstone, Mont.	3:00 p.m.	Tue.	"

Five-Day Automobile Tour of Yellowstone National Park

Lv. West Yellowstone, Mont.	3:30 p.m.	Tue.	Automobile
Stopping at Fountain Paint Pots and Great Fountain Geyser.	9:45 a.m.	Mon.	Automobile
Lv. Old Faithful	5:30 p.m.	Tue.	"
Lv. Old Faithful	1:50 p.m.	Wed.	"
Stopping at Thumb Paint Pots and Fishing Cone.	4:58 p.m.	Wed.	"
Ar. Lake	10:00 a.m.	Thu.	"
Lv. Lake	10:00 a.m.	Thu.	"
Stopping at Mud Geyser and Inspiration Point.	11:46 a.m.	Thu.	"
Ar. Grand Canyon	1:35 p.m.	Fri.	"
Lv. Grand Canyon	1:35 p.m.	Fri.	"
Via Dunraven Pass stopping at Tower Falls.	4:47 p.m.	Fri.	"
Ar. Mammoth Hot Springs	1:30 p.m.	Sat.	"
Lv. Mammoth Hot Springs	1:30 p.m.	Sat.	"
Stopping at Norris Geyser Basin.	4:40 p.m.	Sat.	"
Ar. West Yellowstone, Mont.	7:00 p.m.	Sat.	Un. Pac. Sys.
Lv. West Yellowstone, Mont.	7:00 p.m.	Sat.	"
Ar. Ogden, Utah	5:50 a.m.	Sun.	"
Sleepers occupied until 7:00 a.m.			
Headquarters—Bigelow Hotel—Ogden Canyon Trip by automobile.			
Lv. Ogden, Utah	9:45 a.m.	Sun.	Un. Pac. Sys.
Ar. Salt Lake City, Utah	10:35 a.m.	Sun.	"
Headquarters—Hotel Utah—City sightseeing tour in the morning—			

Noon Organ Recital at Mormon Tabernacle. Trip to Saltair Beach by automobile in the afternoon.			
Lv. Salt Lake City, Utah	10:15 p.m.	Sun.	D. & R.G.W.R.R.
Passing through Royal Gorge by daylight.			
Ar. Colorado Springs, Colo.	6:40 p.m.	Mon.	"
Headquarters—Antlers Hotel (Room with bath).			
Tuesday morning—Pikes Peak Trip by automobile; Afternoon—South Drive.			
Lv. Colorado Springs, Colo.	6:50 p.m.	Tue.	D. & R.G.W.R.R.
Ar. Denver, Colo.	9:00 p.m.	Tue.	"
Headquarters—Cosmopolitan Hotel (Room with bath).			
Wednesday—All-day automobile trip through Denver's Mountain Parks, including Lookout Mountain and Bear Creek Canyon.			
Lv. Denver, Colo.	11:30 p.m.	Wed.	Un. Pac. Sys.
Ar. Omaha, Nebr.	3:25 p.m.	Thu.	"
Lv. Omaha, Nebr.	3:45 p.m.	Thu.	C. & N. W. Ry.
Ar. Chicago, Ill.	7:00 a.m.	Fri.	"

ESTES PARK EXTENSION

Arrangements Must Be Made at Time of Booking

Lv. Denver, Colo.	8:30 a.m.	Wed.	Automobile
Via Big Thompson Canyon.			
Ar. Estes Park Chalets	12:30 p.m.	Wed.	"
Headquarters—Estes Park Chalets.			
Lv. Estes Park Chalets	1:00 p.m.	Thu.	"
Via South St. Vrain's Canyon.			
Ar. Denver, Colo.	5:30 p.m.	Thu.	"
Headquarters—Cosmopolitan Hotel.			
Lv. Denver, Colo.	11:30 p.m.	Thu.	Un. Pac. Sys.
Ar. Omaha, Nebr.	3:25 p.m.	Fri.	"
Lv. Omaha, Nebr.	3:45 p.m.	Fri.	C. & N. W. Ry.
Ar. Chicago, Ill.	7:00 a.m.	Sat.	"

Cost of Complete "YRG" Circle Tour

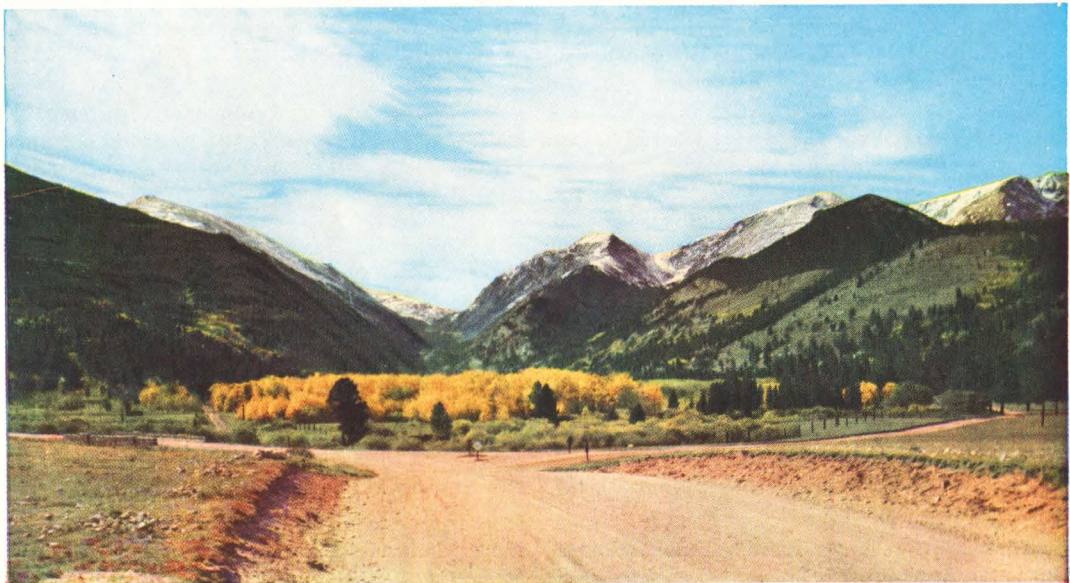
FROM CHICAGO, RETURNING TO CHICAGO

	With Rail Ticket	Without Rail Ticket
Two persons occupying a lower berth, each	\$171.03	\$111.68
One person occupying a lower berth	186.91	127.56
One person occupying an upper berth	180.55	121.20
Two persons occupying a compartment, each	199.90	140.55
Two persons occupying a drawing room, each	211.15	151.80
Three persons occupying a drawing room, each	192.49	133.14

Estes Park Extension \$9.50 Additional

Additional compartment and drawing room rates, also rates for incomplete tour on application.

The above rates, shown with and without rail fare of \$59.35 from Chicago, are based on the "Lodge Way" through Yellowstone, and double room with bath at Antlers Hotel, rates "Hotel Way" \$8.50 higher. Single room with bath at Antlers Hotel will be assigned to any passenger booking alone at additional cost of \$2.00.



THE FALL RIVER ROAD TAKES YOU THROUGH HORSESHOE PARK



LONG'S PEAK DOMINATES ROCKY MOUNTAIN NATIONAL PARK

Twelve Day "YR" Circle Tour

Yellowstone and Rocky Mountain National Parks
Salt Lake City—Denver

For number, size and power . . . for variety in action and formation . . . no geysers, anywhere, can compare with those of Yellowstone. Six geyser basins present as many interestingly different groups of geysers, pools and springs. The Yellowstone River, winding its way through the Grand Canyon, leaps over a precipice 308 feet in height, plunging down with a mighty roar. From Inspiration Point, Artists Point, Red Rock and from Uncle Tom's Trail to the river's edge, the spectacle takes on entirely different aspects. Highways, trails, make it easy to see it all—enjoy it from all angles.

Dunraven Pass, the Needles, Tower Falls, the Palisades and then—Mammoth Hot Springs, Obsidian Cliff, Twin Lakes, Gibbon Falls, Norris Geyser Basin. Not only are you constantly seeing new, strange sights as you hike or go on horseback over the formations and trails of Yellowstone—all along the highways between your stop-overs, each mile unfolds new panoramas of loveliness . . . new regions of delight.

From Yellowstone you go to Salt Lake City, spending a full day in this historic, though modern metropolis. Then by train to Colorado for the circle tour of Estes-Rocky Mountain National Park. Estes Park Village, situated just outside of the boundary of Rocky Mountain National Park, is



RANGERS ACQUAINT YOU WITH GEYSERLAND

nestled in a picturesque park, the hub of an immense, cool, green land of streams and waterfalls, of pine forests and quiet valleys, of snow-capped peaks that reach toward the blue of a western sky. Away from the village, apart from its busy though leisurely activities, are numerous rustic resorts. Some are ideally located in lovely valleys. Others are perched on the sides of sloping mountains. Such a site is that of the Estes Park Chalets. Across the Continental Divide, Grand Lake Lodge is similarly situated, away from the busy little village of Grand Lake.

From "The Chalets" innumerable trails lead off to the more inner recesses of the massive mountain country which surrounds it. To the south is Long's Peak, the mighty, helmeted captain of the grand company of peaks constantly on dress parade for the benefit of all visitors to this region. To the north and west are countless little lakes seemingly dropped into great gorges—pine fringed, cool, quiet.

Grand Lake, located on the western slope of the Continental Divide, is the home of "the highest Yacht Club in the world." Its shores are dotted with summer homes—some imposing—others small, rustic—all, however, set in pine-shrouded, secluded spots with commanding views of lake, forest and snow-capped mountain peaks.

The motor trip through beautiful Big Thompson Canyon to Estes Park . . . across the Divide to Grand Lake . . . back over the Divide at a more southerly point . . . through historic old Idaho Springs . . . thence through Denver's mountain Parks and over Lookout Mountain, provides a variety of vistas, each enticingly different—a trip replete with thrills.

Overland Route "YR" Circle Tour, like all of its companion tours, offers real values at bargain travel prices.

Day by Day Story of "YR" Circle Tour

SUNDAY—Leave Chicago in the evening, a guest on the Overland Route's famous Portland Rose. To Omaha via the Chicago & North Western's direct route. West from Omaha, after a short stop-over next morning, via the Union Pacific.

MONDAY—Restful hours . . . surrounded by every travel luxury . . . straight across Nebraska's fertile farm lands, Wyoming's open grazing lands . . . reaching Cheyenne, famed frontier town and now the thriving state capital of Wyoming, in the evening.

TUESDAY—Swiftly, comfortably you carry on, through a region famed for its scenic values—Targhee Forest . . . Rea's Pass . . . Warm River Canyon—each with its own eloquent story of entrancing natural beauty, arriving at West Yellowstone at 3:00 P.M. With Old Faithful as your destination you board comfortable motor coaches of the Yellowstone Park Transportation Company, stopping en route at Fountain Paint Pot and Great Fountain Geyser. Old Faithful is your home for the night.

WEDNESDAY—"Home of the Geysers." Morning hours are set aside to do as you please—and what more interesting than to explore the fantastic region about Old Faithful, on foot or in the saddle, with or without guide? After luncheon a motor trip, crossing the Continental Divide at two points, brings you to Yellowstone Lake for an overnight stop, pausing en route at Thumb Paint Pots and Fishing Cone. Boating, fishing, watching the bears at their evening meal or just resting will occupy your time.

THURSDAY—The morning ride to Canyon, with a stop at Mud Geyser and Inspiration Point, takes you across Hayden Valley—a famous winter haven for Yellowstone's tremendous herds of elk. The Grand Canyon of the Yellowstone—breath-taking in its grandeur and impressive beyond description—can be viewed in all its multi-colored moods.

FRIDAY—Nothing could be more inspiring than a day at the Canyon. All morning is yours to go where you will, do what you wish. After luncheon a fascinating motor trip over spectacular Dunraven Pass, stopping at Tower Falls and skirting the Canyon at a point where it is enchantingly different, brings you to Mammoth Hot Springs for an overnight stop.

SATURDAY—In the morning you will have an opportunity to visit the terraces at Mammoth before leaving by motor bus for West Yellowstone. En route to the western entrance to the Park you stop at Norris Geyser Basin—the most unusual and varied group of freak formations in the Park. Dinner will be served in the Union Pacific's modern dining room—then a pleasant overnight journey to Salt Lake City.

SUNDAY—Arrive at Salt Lake City where breakfast

awaits you at the metropolitan Hotel Utah. This capital city of Utah is famous for its schools and churches. Motor about the city, visiting numerous Mormon shrines, the University Campus, the luxuriously appointed capitol.

Enjoy a visit to the Tabernacle with its widely heralded acoustic properties . . . its inspiring organ recital. In the afternoon a motor trip to Saltair Beach is more than repaid by a dip in its buoyant blue waters. In the late afternoon board train for a pleasant overnight trip to Greeley, Colorado.

MONDAY—The big red busses of the Rocky Mountain Parks Transportation Company are ready for you when you arrive at Greeley in the middle of the forenoon. They carry you across fertile, irrigated, crop-laden acres and into the mountains via the Big Thompson Canyon—a perfect introduction to the glories of Colorado's Rockies, whose charm captivates you.

The busses arrive at Estes Park Chalets shortly after noon. Your stop at the Chalets—the warm welcome, the cheer of great log fires, the excellent meals, the attentive service and the clean, pure, pine-scented air—is an experience you'll never forget.

Rocky Mountain National Park, with its superb Alpine landscapes and towering granite peaks, includes the finest grouping of mountain scenery in the entire Rockies. Dominating the Park stands the lofty peaks of the Continental Divide. Here you will find activities to suit every taste. In following any of the many trails and roadways—hiking, horseback riding or by automobile—each turn discloses new vistas surprising in their incomparable beauty.

As the sun dips below the jagged peaks of the western horizon and the purple haze of twilight creeps through the park, far different forms of entertainment beckon. From the ballroom calls the captivating music of the dance; in the game room are the card games; many will prefer to stroll in the silvery moonlight.

TUESDAY—All morning is yours to hike, ride, golf, fish, swim or just loaf luxuriously in big easy chairs on the broad verandas with all outdoors before you. The atmosphere of the Chalets, the fascination of its setting and its abundance of activities will captivate you. Early in the afternoon you leave for gorgeous Grand Lake via Fall River and Milner Passes, motoring across the Continental Divide. The night is spent at Grand Lake.

WEDNESDAY—From Grand Lake to Denver, you cross the Continental Divide at Berthoud Pass, motor through Clear Creek Canyon to Idaho Springs for luncheon, and then climb back up through Denver's mountain parks only to drop down again, from Lookout Mountain on the picturesque Lariat Trail to Golden, Colorado, and thence into Denver in the afternoon—an all-day trip crammed full of thrilling scenes of unlimited variety. Dinner is served at the Cosmopolitan Hotel and in the late evening you entrain

for Chicago and home on the Mountain Bluebird.
THURSDAY—Restful, easy-riding comfort across Nebraska via Union Pacific's steel highway, stopping at Omaha for a brief time in mid-afternoon. You then con-

tinue over the Chicago & North Western, through fertile Iowa and Illinois farming regions to Chicago.

FRIDAY—You arrive at the "North Western's" Chicago Passenger Station . . . the end of a perfect vacation trip.

COLORADO SPRINGS EXTENSION

(Arrangements must be made at time of booking)

For little additional expense, members of "YR" Circle Tour parties may spend a thrill-crowded day in Colorado Springs, visiting its well-known scenic attractions.

You remain overnight at the Cosmopolitan Hotel—room with bath . . . leave next morning by train . . . arrive Colorado Springs for a motor trip to Garden of the Gods, South Cheyenne Canyon and Seven Falls. After luncheon

at the Antlers Hotel—a thrilling drive to the summit of imposing Pikes Peak.

Dining en route from Colorado Springs, you arrive Denver at nine o'clock and leave at 11:30 P.M. aboard the "Mountain Bluebird" for the return journey "back East," arriving Chicago Saturday morning.

"YR" Circle Tours Leave Chicago as Follows:

TOUR
 YR—1. Sun., June 19
 YR—2. Sun., June 26
 YR—3. Sun., July 3

TOUR
 YR—4. Sun., July 10
 YR—5. Sun., July 17
 YR—6. Sun., July 24

TOUR
 YR—7. Sun., July 31
 YR—8. Sun., Aug. 7
 YR—9. Sun., Aug. 14

TOUR
 YR—10. Sun., Aug. 21
 YR—11. Sun., Aug. 28
 YR—12. Sun., Sept. 4

Detailed Schedule

Lv. Chicago, Ill. 10:15 p.m. Sun. C. & N. W. Ry.
 Ar. Omaha, Nebr. 9:45 a.m. Mon. "
 Lv. Omaha, Nebr. 10:05 a.m. Mon. Un. Pac. Sys.
 Lv. Cheyenne, Wyo. 8:10 p.m. Mon. "
 Lv. Pocatello, Idaho. 10:15 a.m. Tue. "
 Ar. West Yellowstone, Mont. 3:00 p.m. Tue. "

Five-Day Automobile Tour of Yellowstone National Park.

Lv. West Yellowstone, Mont. 3:30 p.m. Tue. Automobile
 Stopping at Fountain Paint Pot and Great Fountain Geyser.
 Ar. Old Faithful. 5:30 p.m. Tue. "
 Lv. Old Faithful. 1:50 p.m. Wed. "
 Stopping at Thumb Paint Pots and Fishing Cone.
 Ar. Lake. 4:58 p.m. Wed. "
 Lv. Lake. 10:00 a.m. Thu. "
 Stopping at Mud Geyser and Inspiration Point.
 Ar. Grand Canyon. 11:46 a.m. Thu. "
 Lv. Grand Canyon. 1:35 p.m. Fri. "
 Via Dunraven Pass stopping at Tower Falls.
 Ar. Mammoth Hot Springs. 4:47 p.m. Fri. "
 Lv. Mammoth Hot Springs. 1:35 p.m. Sat. "
 Stopping at Norris Geyser Basin.
 Ar. West Yellowstone, Mont. 4:40 p.m. Sat. "
 Lv. West Yellowstone, Mont. 7:00 p.m. Sat. Un. Pac. Sys.
 Ar. Salt Lake City, Utah. 7:00 a.m. Sun. "
 Headquarters—Hotel Utah. City sightseeing trip in the morning—
 Noon Organ Recital in Mormon Tabernacle. Trip to Saltair Beach
 by automobile in the afternoon.
 Lv. Salt Lake City, Utah. 5:35 p.m. Sun. Un. Pac. Sys.
 Ar. Cheyenne, Wyo. 7:25 a.m. Mon. "
 Ar. Greeley, Colo. 10:05 a.m. Mon. "

Three-Day Automobile Tour of Rocky Mountain National Park.

Lv. Greeley, Colo. 10:30 a.m. Mon. Automobile
 Ar. Estes Park, Colo. 12:45 p.m. Mon. "
 Headquarters—Estes Park Chalets.
 Lv. Estes Park, Colo. 1:30 p.m. Tue. "
 Ar. Grand Lake, Colo. 5:30 p.m. Tue. "
 Headquarters—Grand Lake Lodge.
 Lv. Grand Lake, Colo. 8:15 a.m. Wed. "
 Ar. Idaho Springs, Colo. 11:45 a.m. Wed. "
 Lv. Idaho Springs, Colo. 1:00 p.m. Wed. "
 Ar. Denver, Colo. 4:30 p.m. Wed. "
 Headquarters—Cosmopolitan Hotel.
 Lv. Denver, Colo. 11:30 p.m. Wed. Un. Pac. Sys.
 Ar. Omaha, Nebr. 3:25 p.m. Thu. "
 Lv. Omaha, Nebr. 3:45 p.m. Thu. C. & N. W. Ry.
 Ar. Chicago, Ill. 7:00 a.m. Fri. "

COLORADO SPRINGS EXTENSION

Arrangements Must Be Made at Time of Booking

Headquarters—Cosmopolitan Hotel (room with bath).

Lv. Denver, Colo. 8:15 a.m. Thu. D. & R. G. W. Ry.
 Ar. Colorado Springs, Colo. 10:25 a.m. Thu. "
 Headquarters—Antlers Hotel. Morning Trip—South Drive, Garden
 of Gods, South Cheyenne Canyon and Seven Falls. Afternoon
 Trip—Pikes Peak by Auto.
 Lv. Colorado Springs, Colo. 6:45 p.m. Thu. D. & R. G. W. Ry.
 Ar. Denver, Colo. 9:00 p.m. Thu. "
 Lv. Denver, Colo. 11:30 p.m. Thu. Un. Pac. Sys.
 Ar. Omaha, Nebr. 3:25 p.m. Fri. "
 Lv. Omaha, Nebr. 3:45 p.m. Fri. C. & N. W. Ry.
 Ar. Chicago, Ill. 7:00 a.m. Sat. "

Cost of Complete "YR" Circle Tour

FROM CHICAGO, RETURNING TO CHICAGO

	With Rail Ticket	Without Rail Ticket
Two persons occupying a lower berth, each.	\$180.23	\$120.88
One person occupying a lower berth.	196.11	136.76
One person occupying an upper berth.	189.75	130.40
Two persons occupying a compartment, each.	209.10	149.75
Two persons occupying a drawing room, each.	220.35	161.00
Three persons occupying a drawing room, each.	201.69	142.34

Colorado Springs Extension \$15.40 Additional

Additional compartment and drawing room rates, also rates for incomplete tour on application.
 The above rates, shown with and without railroad fare of \$59.35 from Chicago, are based on "Lodge Way" in Yellowstone, rates "Hotel Way" \$8.50 higher.



GRAND CANYON FROM CAPE ROYAL

FIFTEEN DAY "YZ" CIRCLE TOUR

**Yellowstone—Zion—Grand Canyon—Bryce Canyon
National Parks—Cedar Breaks and
Salt Lake City**

"YZ" Circle Tours offer an exceptional variety of unusual attractions. Going direct to Yellowstone, you enter the Park at Union Pacific's western gateway—by far the most popular entrance. Starting your trip by motor at this point you see all of the Park in its natural sequence.

Yellowstone has been justly termed "Nature's Carnival." Its geysers spouting steam and tinted mud . . . vividly colored pools seething and boiling . . . hot springs bubbling through the earth's erupted crust . . . gorgeous rock terraces dazzling in the sunlight . . . falls dropping thunderously down canyon walls—such sights will convince you of Nature's great "showmanship."

None the less intriguing, yet of far different appeal, are the five famous natural wonderlands, which the Southern Utah-Arizona group offers you on a "YZ" Circle Tour.

Zion National Park is a symphony of color, form and friendliness. Its stupendous gorge with mighty walls tinted in ever-changing shades of color, offers a limitless variety of splendor.

Kaibab National Forest with its virgin stands of pine, spruce and fir trees, artistically intermixed with charming aspen copses is "home" to thousands of graceful deer and to the rare and beautiful little white-tailed squirrel.

In Grand Canyon, Nature carved her eternal masterpiece with tools of wind and water. Grand Canyon is an epic of erosion. Thirteen miles from rim to rim, it presents from Union Pacific's

Grand Canyon Lodge on the towering North Rim an endless aspect of terraces, spires, gorges—scarlet in the sunlight—tempered to purple and liquid silver in the shadows.

The vast natural amphitheatre that is Bryce Canyon National Park displays another mood of Nature most amazing and enchanting. To stand on the rim of this canyon, and look down is to gaze upon all of the fairy cities of fabledom, painted in every color and blended shades of color.

Cedar Breaks as viewed from the rim—a vast expanse more massive than Bryce Canyon, yet less delicate of form—is a riot of color unbelievably beautiful.

All this and more is yours to enjoy on a “YZ” Circle Tour, the cost of which, per pleasure-packed minute, is infinitesimal.

Day by Day Story of “YZ” Circle Tour

SATURDAY—Late evening . . . Chicago & North Western’s Chicago Passenger Station . . . a busy though orderly scene . . . Overland Route’s luxurious and comfortable Portland Rose waiting . . . an “All aboard” and your fun begins . . . your worries cease. Across the mighty Mississippi . . . over the muddy Missouri and into Omaha in the morning. A change of locomotives . . . and you continue on smoothly, swiftly, over the Union Pacific’s “Trail of the Iron Horse.”

SUNDAY—Splendid meals . . . interesting panoramas . . . charming companions . . . deep-seated comfort . . . historic points of interest along your route . . . the tang of the air as the sun goes down . . . how you can sleep!

MONDAY—Evergreen forests, rushing streams, rocky ridges, precipitous slopes along the right-of-way . . . in the distance the Tetons. Arrive West Yellowstone in the afternoon . . . right on the western Park boundary. Before you know it you are whisked away in comfortable, roomy busses . . . you’re in Yellowstone. Scenic thrills galore en route to Old Faithful. And, in the evening, something to entertain you every minute.

TUESDAY—All morning to explore the weird formations which completely surround you wherever you go. Nature in convulsions. In the afternoon a twisting trip, with a surprise at every turn, to gorgeous Yellowstone Lake on whose shores your home for the night is picturesquely placed. Fortunate indeed will be those who are guests at “the Lake” for a “full moon” evening.

WEDNESDAY—To the Grand Canyon of the Yellowstone for a gasping glance before luncheon. Then, all afternoon to view its magnificence before sundown. In the evening—plenty to occupy your time, as at all lodges and hotels throughout the Park. Programs that provide no end of amusement . . . crackling campfires and community singing . . . music, dancing . . . taps.

THURSDAY—The morning is yours to do as you choose. For the more ambitious, Uncle Tom’s Trail to the foot of the Great Falls is a treat. Easy stairs to the brink of the

falls . . . trails along the canyon rim, for those who have a greater respect for “the altitudes.” In the afternoon, to Mammoth Hot Springs, stopping en route at Tower Falls. Overnight at Mammoth—headquarters of the Park.

FRIDAY—The terraces—delicate of form, vast in extent, pastel in color. Join one of the parties conducted by a Government Ranger to thoroughly appreciate these formations. After luncheon, by motor to West Yellowstone . . . through Golden Gate . . . past Obsidian Cliff, Twin Lakes, Gibbon Falls . . . stopping at eerie Norris Geyser Basin. Then, entrain, for Southern Utah, where Nature, in still different moods, awaits you.

SATURDAY—A brief pause at Salt Lake City, then along the shores of Salt Lake and on to Lund, Utah. Here the deluxe motor busses of the Utah Parks Co. await your arrival to speed you to Zion for an enchanting glimpse of its striking beauty at twilight. After dinner at Zion Lodge—a splendid program . . . an interesting talk by the Ranger Naturalist . . . dance if you wish, or roam out in the open with a brilliant starlit canopy overhead.

SUNDAY—Communing with Nature in her most reverent mood, this day will linger in your memory as a Sunday of Sundays. Out in the open . . . on the finest of trails . . . enjoying now a gorgeous glimpse of the East Temple—the West Temple . . . quietly resting in the inspiring Temple of Sinawava, watching the sun work miracles in the ever-changing panorama before you. Sunday in Zion!

MONDAY—Early afternoon finds you gazing, gasping, as you stand at one of the tunnel windows on the new Mt. Carmel Highway, en route to the Grand Canyon. Through quaint Mormon villages . . . winding through the Kaibab with all eyes watching for the flash of a fleeting white-tailed squirrel—a view of browsing deer . . . then, Grand Canyon, austere, breath-taking. And Grand Canyon Lodge—perfect in every detail.

TUESDAY—All day at Grand Canyon. Visit Cape Royal, Point Imperial, Point Sublime or any of dozens of points from which you may enjoy the awesome grandeur



TEMPLE OF SINAWAVA, ZION NATIONAL PARK

of this masterpiece of Nature. Motor out . . . walk along the rim trails . . . horseback down into the canyon . . . or just rest on the broad verandas or before the great plate glass windows of the lounge. From wherever you choose to view Grand Canyon, the picture is divine. The unusual Recreation Hall is a scene of lively entertainment in the evening.

WEDNESDAY—Riding again through the Kaibab . . . across prismatic plains . . . luncheon at Kanab . . . and, at 4:30 in the afternoon, Bryce Canyon. Before dinner, an opportunity to stand on the rim of the canyon at sunset, when the delicate colors are most vivid—most striking. Were you to visit Bryce a dozen times, you still wouldn't believe such exquisite beauty could exist.

THURSDAY—To really appreciate the delicacy of Bryce Canyon's fantastic formations, follow the trails, on foot or in the saddle. The myriad marvels of Nature's handiwork will stretch your imagination almost to the breaking point. En route to Cedar City after luncheon, a stop at Cedar

Breaks—a vista of its tremendous formations splashed with every color of the rainbow will add another shock to your senses. Indescribable beauty. Dinner at Hotel El Escalante in Cedar City, the gateway to the Utah-Arizona wonderlands.

FRIDAY—In Salt Lake City, motoring about . . . visiting historic Mormon shrines . . . attending the organ recital in the Tabernacle . . . then relaxation aboard the Overland Route's famous Los Angeles Limited for the train trip home.

SATURDAY—A day of rest, of solid comfort, of "meals that appeal." Every travel luxury to make your journey one of greatest pleasure—Union Pacific personnel providing the excellence of service which has gained such an enviable reputation throughout the travel world. Omaha in late afternoon, from where the "North Western" provides you with "the best of everything" to Chicago.

SUNDAY—Arrive Chicago in mid-morning, after a glorious farewell breakfast in the diner.

"YZ" Circle Tours Leave Chicago as Follows:

TOUR	
YZ-1.....	Sat., June 18
YZ-2.....	Sat., June 25
YZ-3.....	Sat., July 2

TOUR	
YZ-4.....	Sat., July 9
YZ-5.....	Sat., July 16
YZ-6.....	Sat., July 23

TOUR	
YZ-7.....	Sat., July 30
YZ-8.....	Sat., Aug. 6
YZ-9.....	Sat., Aug. 13

TOUR	
YZ-10.....	Sat., Aug. 20
YZ-11.....	Sat., Aug. 27
YZ-12.....	Sat., Sept. 3

Detailed Schedule

Lv. Chicago, Ill.....	10:15 p.m.	Sat.	C. & N. W. Ry.
Ar. Omaha, Nebr.....	9:45 a.m.	Sun.	"
Lv. Omaha, Nebr.....	10:05 a.m.	Sun.	Un. Pac. Sys.
Lv. Cneyenne, Wyo.....	8:10 p.m.	Sun.	"
Lv. Pocatello, Idaho.....	10:15 a.m.	Mon.	"
Ar. West Yellowstone, Mont.....	3:00 p.m.	Mon.	"
Five-Day Automobile Tour of Yellowstone National Park			
Lv. West Yellowstone, Mont.....	3:30 p.m.	Mon.	Automobile

Stopping at Fountain Paint Pot and Great Fountain Geyser.			
Ar. Old Faithful.....	5:30 p.m.	Mon.	Automobile
Lv. Old Faithful.....	1:50 p.m.	Tue.	"
Stopping at Thumb Paint Pots and Fishing Cone.			
Ar. Lake.....	4:58 p.m.	Tue.	"
Lv. Lake.....	10:00 a.m.	Wed.	"
Stopping at Mud Geyser and Inspiration Point.			
Ar. Grand Canyon.....	11:46 a.m.	Wed.	"



BRYCE CANYON FROM COMANCHE TRAIL

Detailed Schedule Continued

Lv. Grand Canyon..... 1:35 p.m.	Thu.	Automobile	Lv. Grand Canyon Lodge..... 9:15 a.m.	Wed.	Automobile
Via Dunraven Pass stopping at Tower Falls.			Ar. Kanab Lodge..... 12:30 p.m.	Wed.	"
Ar. Mammoth Hot Springs..... 4:47 p.m.	Thu.	"	Lv. Kanab Lodge..... 1:30 p.m.	Wed.	"
Lv. Mammoth Hot Springs..... 1:30 p.m.	Fri.	"	Ar. Bryce Canyon Lodge..... 4:30 p.m.	Wed.	"
Stopping at Norris Geyser Basin.			Thursday Morning at Bryce Canyon.		
Ar. West Yellowstone, Mont..... 4:40 p.m.	Fri.	Automobile	Lv. Bryce Canyon Lodge..... 1:30 p.m.	Thu.	"
Lv. West Yellowstone, Mont..... 7:00 p.m.	Fri.	Un. Pac. Sys.	Ar. Cedar Breaks..... 4:00 p.m.	Thu.	"
Ar. Salt Lake City, Utah..... 7:00 a.m.	Sat.	"	Ample time to view this colorful amphitheatre.		
Lv. Salt Lake City, Utah..... 8:00 a.m.	Sat.	"	Lv. Cedar Breaks..... 4:30 p.m.	Thu.	"
Ar. Lund, Utah..... 2:50 p.m.	Sat.	"	Through beautiful Cedar Canyon.		
Six-Day Automobile Tour of Utah-Arizona Scenic Wonderlands			Ar. Cedar City, Utah..... 6:00 p.m.	Thu.	"
Lv. Lund, Utah..... 3:00 p.m.	Sat.	Automobile	Dinner at El Escalante Hotel.		
Ar. Zion Lodge..... 6:15 p.m.	Sat.	"	Lv. Cedar City, Utah..... 10:00 p.m.	Thu.	Un. Pac. Sys.
Sunday—In Zion Canyon. Auto Trip to Temple of Sinawava and the Narrows. Many trips available.			Ar. Salt Lake City, Utah..... 11:40 a.m.	Fri.	"
Lv. Zion Lodge..... 1:00 p.m.	Mon.	Automobile	Headquarters—Hotel Utah. City sightseeing trip, including Watsatch Drive. Noon Organ Recital at Mormon Tabernacle.		
Via the New Mt. Carmel Highway and through beautiful Kaibab Forest.			Lv. Salt Lake City, Utah..... 5:35 p.m.	Fri.	Un. Pac. Sys.
Ar. Grand Canyon Lodge..... 6:00 p.m.	Mon.	Automobile	Lv. Cheyenne, Wyo..... 7:20 a.m.	Sat.	"
Tuesday—At Grand Canyon. Side trips available.			Ar. Omaha, Nebr..... 8:10 p.m.	Sat.	"
			Lv. Omaha, Nebr..... 8:50 p.m.	Sat.	C. & N. W. Ry.
			Ar. Chicago, Ill..... 9:20 a.m.	Sun.	"

Cost of Complete "YZ" Circle Tour

FROM CHICAGO, RETURNING TO CHICAGO

	With Rail Ticket	Without Rail Ticket
Two persons occupying a lower berth, each.....	\$232.58	\$166.93
One person occupying a lower berth.....	252.21	186.56
One person occupying an upper berth.....	244.35	178.70
Two persons occupying a compartment, each.....	268.20	202.55
Two persons occupying a drawing room, each.....	282.45	216.80
Three persons occupying a drawing room, each.....	259.29	193.64

Additional drawing room and compartment rates, also rates for incomplete tour on application.

The above rates shown with and without railroad fare of \$65.63 from Chicago, are based on "Lodge Way" in Yellowstone, rates "Hotel Way" \$8.50 higher.

NINE DAY "Z" CIRCLE TOUR

Zion—Grand Canyon—Bryce Canyon National Parks
Cedar Breaks—Salt Lake City

Overland Route Circle Tours are planned to provide just what the summer vacation traveler wishes—just what he requests. A great many of our former patrons suggested that we operate a short, inexpensive tour to include only Salt Lake City and the four hundred and fifty mile spectacular circle tour of Utah-Arizona wonderlands. The nine-day "Z" Circle Tour is the result.

You spend all of your precious vacation hours in the West "doing" thoroughly this newest, most unusual region in the country—going directly from Chicago to Cedar City, Utah—Union Pacific's gateway to this land of superlative delights—and returning directly to Chicago after a most pleasant day's stop-over in Salt Lake City.

Zion, with its great gorge—colorful, sheer, sublime. Grand Canyon—"the shrine of beauty lovers from all the world." Bryce Canyon—"the sensation of the National Parks." All along the miles of highways connecting these three outstanding National Parks with each other—and connecting all with Union Pacific's rail terminus and gateway at Cedar City—is an endless panorama of charm . . . scenic feature after scenic feature.

Utah's Dixie . . . Mt. Carmel Highway with mile-long tunnel . . . prismatic plains . . . the Kaibab Forest . . . Red Canyon . . . lava fields . . . Cedar Breaks . . . Cedar Canyon—incomparable thrills such as these will make every moment of this memorable trip one of pure delight, with a day in Salt Lake City added for good measure.

Day by Day Story of "Z" Circle Tour

SATURDAY—Leave Chicago via the Chicago & North Western on the Los Angeles Limited, one of the Overland Route's famous fleet of fine, fast trains to all the West. A continuous pleasant panorama of fertile, rolling farm lands.

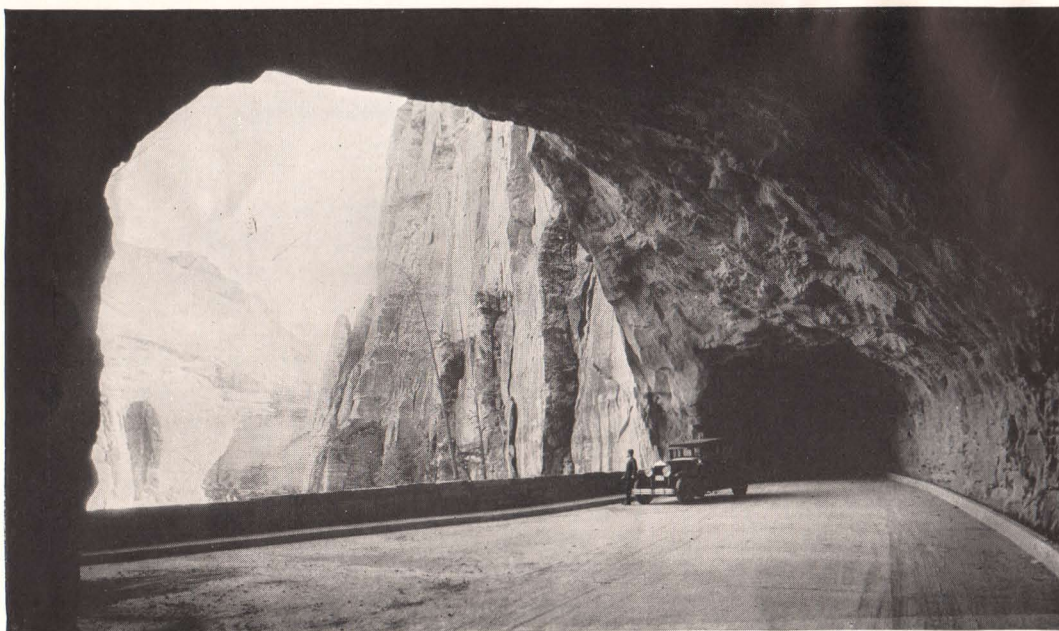
SUNDAY—From Omaha, in the morning the Union Pacific carries you west over a striking stretch of roadway

through historic cities and towns of Nebraska and Wyoming.

MONDAY—Through Ogden and Salt Lake City to Lund, Utah, the main line point from which you start your motor tour of tours. Through Cedar City, where dinner is served at El Escalante Hotel . . . and on to Zion. Entertainment, nature talk, movies, dancing in the evening.



TYPICAL DELUXE CABINS AT BRYCE



MT. CARMEL HIGHWAY TUNNEL WINDOWS FRAME GORGEOUS VISTAS

TUESDAY—During the morning hours an enjoyable motor trip to the Temple of Sinawava for an unforgettable view of this inspiring spot . . . then a delightful luncheon at the Lodge. Motor away at 1:00 P.M., en route to Grand Canyon . . . six huge tunnel portals along magnificent Mt. Carmel Highway, each framing a masterpiece of scenic grandeur . . . deep into the Kaibab, with its abundance of deer, its shy white-tailed squirrels. Grand Canyon Lodge . . . an enthusiastic welcome . . . then a dash for the veranda or the "million dollar windows" of the attractive lounge, for the first breath-taking view of Nature's most stupendous spectacle. Evening events at Grand Canyon Lodge are planned for your pleasure. Great log fires . . . informal entertainment . . . music for the dance.

WEDNESDAY—Grand Canyon from Cape Royal, with its Angel's Window, presents an entirely different view than at other points along the rim. A mile below and miles away is the Colorado River, rushing, raging. Beyond the opposite rim you can see for miles out across the desert—the Painted Desert. Point Imperial is likewise fascinatingly different. See them both on a thrilling motor trip over the new Cape Royal Highway, at small additional expense. You have a full day at Grand Canyon to enjoy its sublime beauty—ever-changing as the sun courses its resplendent way from east to west.

THURSDAY—Leave Grand Canyon at 9:15 A.M. for Bryce Canyon National Park, stopping for luncheon at Kanab. Back again over the winding road, deep into the Kaibab . . . out across the plains . . . through sparkling canyons . . . past Vermilion Cliffs . . . through Red Canyon . . . then, Bryce Canyon the beautiful—like a glimpse of another world. Sunsets enliven the myriad tints of Bryce Canyon's fragile formations and presents the towering temple peaks, the colorful sculptured depths at their best.

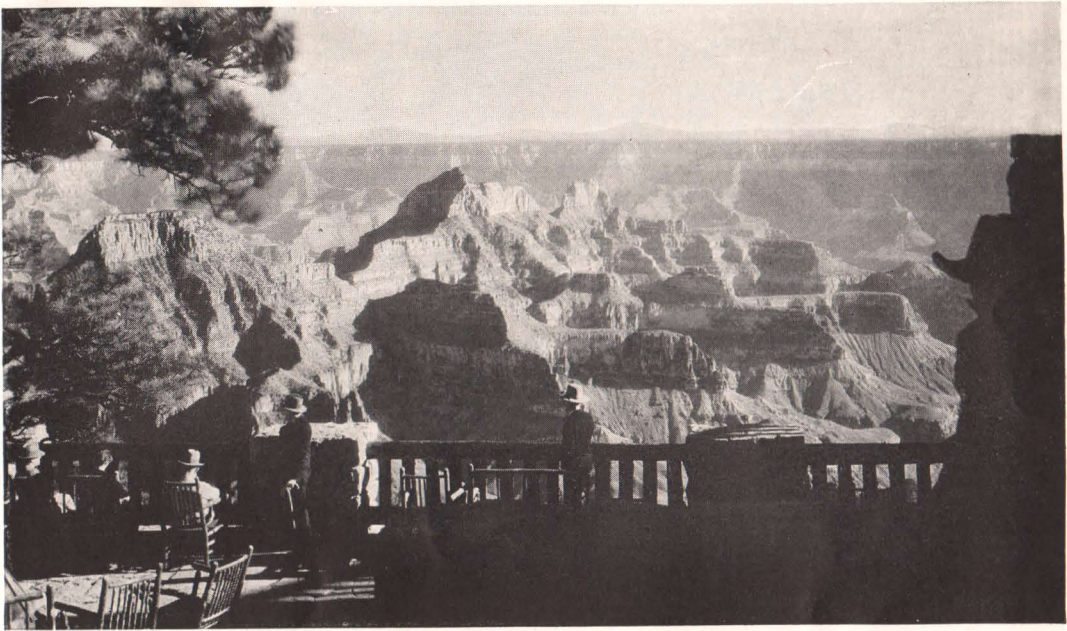
Entertainment and dancing enliven the evening at the Lodge.

FRIDAY—Along the rim . . . down the trails . . . wherever you go, something new and startling wherever your eyes rest. So accurately has Nature's skill carved out the innumerable statues, statuettes and fragile filigree formations, that there is no need to stretch your imagination one bit to easily discern the various features which your guide will point out to you at every bend in the trail. All morning at Bryce, then by motor to kindred Cedar Breaks, quite similar in composition—less delicate of form—yet more colorful in tints. Red Canyon, Cedar Canyon, and a host of other interesting sights indelibly impressed in your mind all along the highway which leads to Cedar City, dinner and departure for Salt Lake City.

SATURDAY—On arrival Salt Lake City you are immediately transferred to the Mormon Tabernacle, for a splendid noon-day organ recital. Luncheon at the magnificent Hotel Utah just across the street. In the afternoon automobile tour featuring the many historic and romantic points of interest in Salt Lake City, including the Wasatch Drive—overlooking the city and its environs—the near-by canyons and a portion of the Old Mormon Trail. Trip terminates at the Union Pacific Station in the late afternoon, where you will board the "Los Angeles Limited" for a swift, restful journey to Chicago and home.

SUNDAY—You will enjoy every minute of the day as your train speeds eastward over the Union Pacific—Chicago & North Western. A short pause at Omaha in the evening and then just an over night ride to Chicago. Meals for which these two great railroads are famous are served in sparkling, smart, dining cars.

MONDAY—Arrive Chicago in time for eastern connections.



VERANDA VISTA AT GRAND CANYON LODGE

"Z" Circle Tours Leave Chicago as Follows:

TOUR		TOUR		TOUR		TOUR	
Z-1.....	Sat., July 2	Z-2.....	Sat., July 16	Z-3.....	Sat., July 30	Z-4.....	Sat., Aug. 13

Detailed Schedule

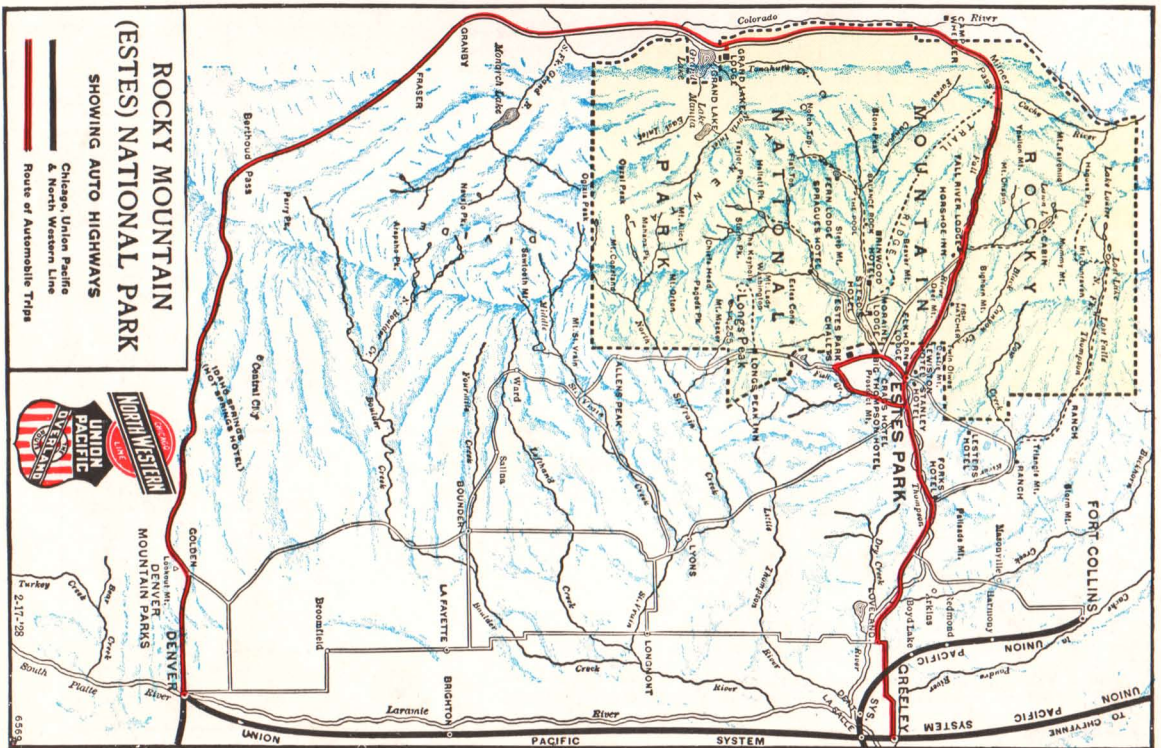
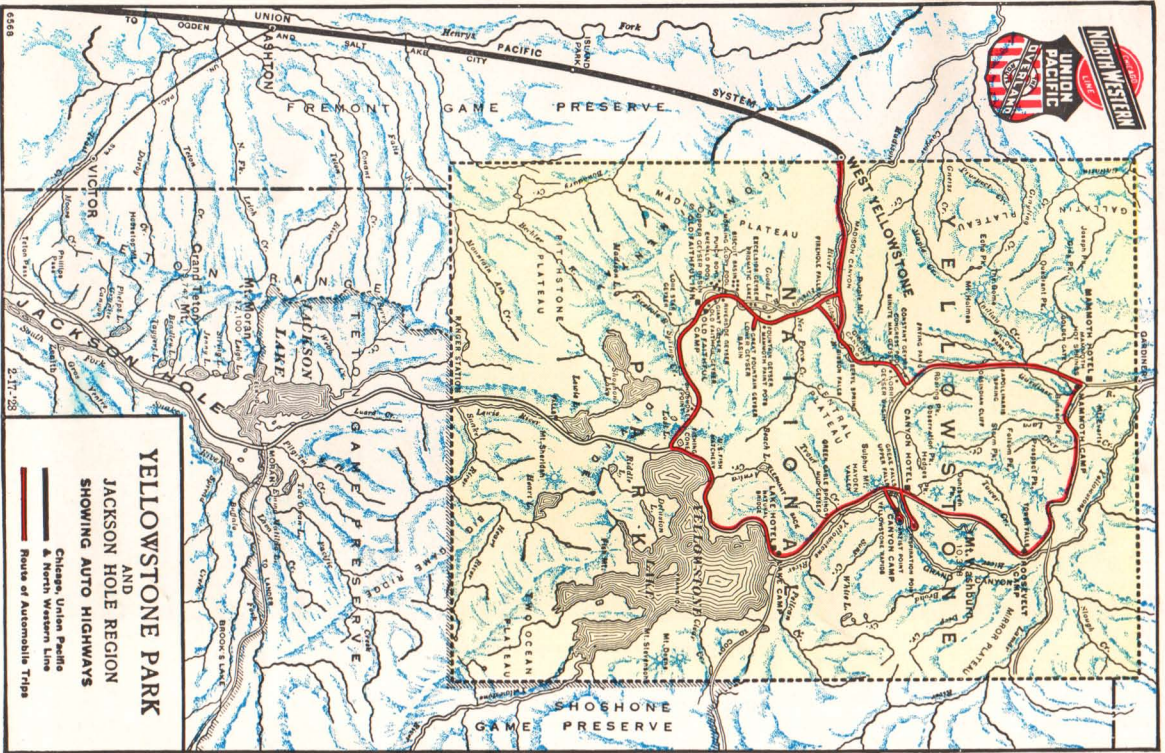
Lv. Chicago, Ill.....	9:30 p.m.	Sat.	C. & N. W. Ry.	Ar. Kanab Lodge.....	12:30 p.m.	Thu.	Automobile
Ar. Omaha, Neb.....	9:35 a.m.	Sun.	"	Luncheon—Kanab Lodge.			
Lv. Omaha, Neb.....	10:07 a.m.	Sun.	Un. Pac. Sys.	Lv. Kanab Lodge.....	1:30 p.m.	Thu.	"
Lv. Cheyenne, Wyo.....	8:35 p.m.	Sun.	"	Ar. Bryce Canyon Lodge.....	4:30 p.m.	Thu.	"
Ar. Salt Lake City, Utah.....	10:35 a.m.	Mon.	"	Friday Morning—Trail trips available at Bryce Canyon.			
Lv. Salt Lake City, Utah.....	11:00 a.m.	Mon.	"	Lv. Bryce Canyon Lodge.....	1:30 p.m.	Fri.	Automobile
Ar. Lund, Utah.....	5:12 p.m.	Mon.	"	Ar. Cedar Breaks.....	4:00 p.m.	Fri.	"
Five-Day Automobile Tour of Utah-Arizona				Ample time to view this colorful amphitheatre.			
Scenic Wonderlands				Lv. Cedar Breaks.....	4:30 p.m.	Fri.	"
Lv. Lund, Utah.....	5:20 p.m.	Mon.	Automobile	Through beautiful Cedar Canyon.			
Ar. Cedar City, Utah.....	6:10 p.m.	Mon.	"	Ar. Cedar City, Utah.....	6:00 p.m.	Fri.	"
Dinner—El Escalante Hotel.				Dinner—El Escalante Hotel.			
Lv. Cedar City, Utah.....	7:00 p.m.	Mon.	"	Lv. Cedar City, Utah.....	10:00 p.m.	Fri.	Un. Pac. Sys.
Ar. Zion Lodge.....	9:30 p.m.	Mon.	"	Ar. Salt Lake City, Utah.....	11:40 a.m.	Sat.	"
Auto trip to Temple of Sinawava and the Narrows.				Headquarters—Hotel Utah. Attend Organ Recital in Tabernacle at Noon—Combination City-Wasatch Drive during afternoon.			
Lv. Zion Lodge.....	1:00 p.m.	Tue.	"	Lv. Salt Lake City, Utah.....	5:35 p.m.	Sat.	Un. Pac. Sys.
Via New Mt. Carmel Highway and through beautiful Kaibab Forest.				Lv. Cheyenne, Wyo.....	7:35 a.m.	Sun.	"
Ar. Grand Canyon Lodge.....	6:00 p.m.	Tue.	Automobile	Ar. Omaha, Neb.....	8:10 p.m.	Sun.	"
Wednesday—Side trips available at Grand Canyon.				Lv. Omaha, Neb.....	8:50 p.m.	Sun.	C. & N. W. Ry.
Lv. Grand Canyon Lodge.....	9:15 a.m.	Thu.	"	Ar. Chicago, Ill.....	9:20 a.m.	Mon.	"

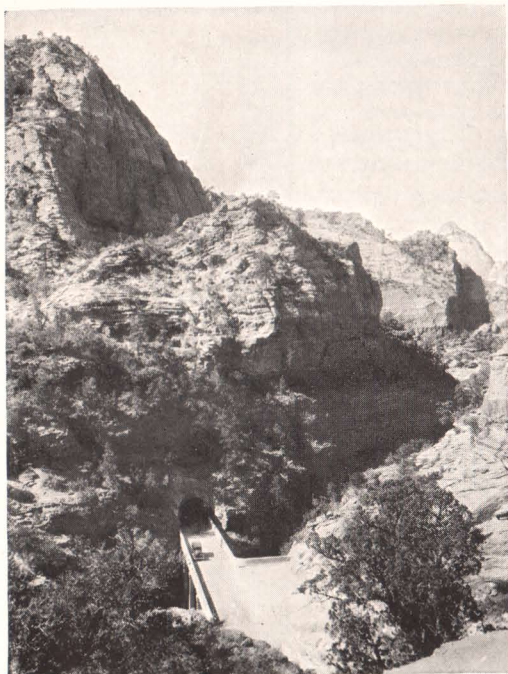
Cost of Complete "Z" Circle Tour

FROM CHICAGO, RETURNING TO CHICAGO

	With Rail Ticket	Without Rail Ticket
Two persons occupying a lower berth, each.....	\$170.39	\$108.94
One person occupying a lower berth.....	189.51	128.06
One person occupying an upper berth.....	181.85	120.40
Two persons occupying a compartment, each.....	205.25	143.80
Two persons occupying a drawing room, each.....	218.75	157.30
Three persons occupying a drawing room, each.....	196.25	134.80

Additional compartment and drawing room rates, also rates for incomplete tour on application.
The above rates are shown with and without railroad fare of \$61.45 from Chicago.





EASTERN ENTRANCE TO MT. CARMEL HIGHWAY'S MILE LONG TUNNEL



BRYCE CANYON FROM THE RIM

THIRTEEN DAY "ZRG" CIRCLE TOUR

Zion—Grand Canyon—Bryce Canyon National Parks—
Cedar Breaks—Salt Lake City—
The Royal Gorge—Colorado Springs—Denver

In the five major attractions of Southern Utah-Arizona, each unique and supreme in its own right, "ZRG" parties spend seven unforgettably happy days.

Zion National Park with its intimate majesty . . . Kaibab National Forest with its exquisite virgin stands of pine, cedar, spruce and graceful aspen . . . Grand Canyon, sublime in depth and shadow . . . fantastic Bryce Canyon with its flaming minarets . . . Cedar Breaks, vast and vari-colored.

The lodges, the cabins, all the facilities are modern. Grand Canyon Lodge, the most beautiful of all, seems to have grown out of the very canyon walls whose sheer heights it dominates.

Millions of dollars for highways have given to this region a splendid system of excellent roads, the most spectacular stretch of which is found on the new Mt. Carmel Highway. The National Park Service has developed in each of the National Parks in this region a system of trails unsurpassed anywhere. Transportation facilities are of the finest. Utah Parks Company's luxurious motor busses are of the newest design—comfortable, roomy.

All these are but a few of the reasons why the Utah-Arizona show places have become such a magnet for summer vacation travelers in spite of the fact that they are the nation's newest playgrounds.

"ZRG" Circle Tours make a complete "loop" around these enchanting regions. They include, as well, a trip through the world-famous Royal Gorge and a most satisfying taste of the grandeur of the Colorado Rockies.

Day by Day Story of "ZRG" Circle Tour

SUNDAY—Relieved of all travel cares at the very start of the trip, you leave on the Los Angeles Limited from the Chicago & North Western splendid Chicago Passenger Station. Due west across Illinois and Iowa your swift journey is safeguarded by continuous automatic train control equipment—an invisible guardian which assures you safety.

MONDAY—From Omaha, which you reach in the morning hours, you travel over the Union Pacific—across Nebraska, the northeast tip of Colorado, and into Wyoming, with stops along the line at cities famous in frontier history.

TUESDAY—Your route takes you through beautiful Weber Canyon—through Ogden and Salt Lake City—along the shore of the Great Salt Lake—then on to Lund and Cedar City, Utah, which is reached late in the afternoon. Dinner at hospitable El Escalante Hotel, your night's headquarters. Room with bath.

WEDNESDAY—Breakfast at El Escalante Hotel, then by automobile to Zion National Park. At 11:00 A.M. Zion Park Lodge welcomes you into its charming, home-like atmosphere. After lunch a delightful motor trip to the Temple of Sinawava and the Narrows. Dinner at the Lodge. In the evening an impromptu entertainment, an interesting talk by the park naturalist, a dance, or a walk out under the starlit heavens will round out an inspiring day's activities.

THURSDAY—The gentle majesty of Zion and its sheer, colorful gorge, intrigue and inspire. Spend the morning as you will. After a tasty luncheon, your motor car takes you over one of the most unusual mountain highways in the world. The new Mt. Carmel Highway, opened for the first time during the 1930 season to regular travel, defies description. Its major tunnel, over a mile long, blasted out of the mountain side, is pierced at six points by picturesque portals, each of which frames an imposing vista of captivating loveliness.

Beyond this new highway your route is across prismatic plains and into the impressive Kaibab National Forest. The Kaibab, a virgin stand of towering pines and graceful aspen, is the home of a herd of over 20,000 deer, many large groups of which will come out to greet you as you motor through their favorite haunts. The Kaibab is also the home of the rare white-tailed squirrel.

Your ride ends abruptly and most sensationally at the very brink of the Grand Canyon as your bus comes to rest at Grand Canyon Lodge—Utah Parks Company's gorgeous hostelry. You will enjoy the comforts and the atmosphere of aristocratic informality of Grand Canyon Lodge.

FRIDAY—All day at Grand Canyon. Motor trips to Cape Royal, Point Imperial, Point Sublime—saddle trips along the rim or down the trails—are available. Or, per-

haps you may prefer simply to bask in the sunshine on the broad veranda of the Lodge and "drink in" the stupendous panorama before you, whose colorful beauty changes every hour as the sun courses its way across the heavens. Dancing and entertainment enliven the evening hours.

SATURDAY—Retracing your motor route part of the way, you drive through the Kaibab, across the plains to Kanab for luncheon, then to Bryce Canyon National Park where you arrive in the late afternoon. Bryce Canyon Lodge is situated only a short way from the rim of Bryce Canyon and you are quartered in the same type of homey, modern and comfortable cabins as at Zion and Grand Canyon. Bryce Canyon will awe the senses of the most imaginative with its labyrinth of grotesque but beautiful figures and fragile filigree carved in rock, flame-vivid in color and tinted with every shade of the spectrum. You remain overnight at Bryce and a pleasant evening of entertainment and dancing is provided.

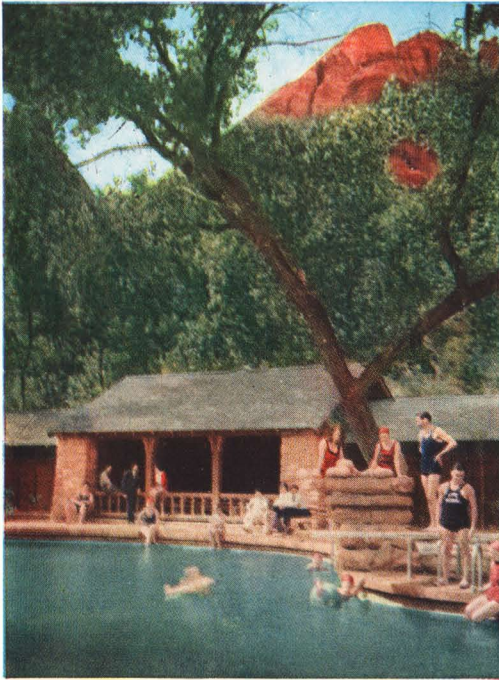
SUNDAY—All day at Bryce—and there are side trips and trail trips without limit for you to choose from. A most popular all-day trip is that to Natural Bridge which may be visited best by horse-back with an experienced guide to lead the way, entertain with his droll western wit and to act as host at luncheon out under the heavens.

MONDAY—In the morning, again you may enjoy Bryce Canyon from its far-stretching rim or you may explore its exquisite formations from foot trails or horse trails which lead down into the canyon. After luncheon your motor busses leave for the return trip to Cedar City. The route is through unusual Red Canyon, past great areas of black angular lava from extinct volcanoes, through fine forests and open "parks" to Cedar Breaks.

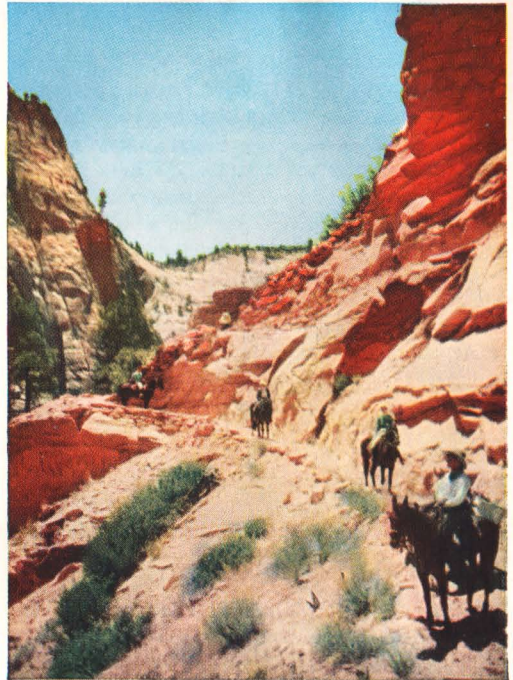
An artist has counted more than sixty tints in Cedar Breaks whose series of vast amphitheatres are eroded to a depth of 2,000 feet in an area of 60 square miles. As you stand on



PIKES PEAK FROM COLORADO SPRINGS



THE SWIMMING POOL AT ZION LODGE



EAST RIM TRAIL—ZION

the rim of this scintillating show place you cannot help but be impressed with the power of Nature's mighty processes.

Reluctantly you leave Cedar Breaks on the last stretch of the tour among the Utah-Arizona Wonderlands. As you ride along the way, to your left in the distance can be seen the towers and temples of Zion, which only a few days before were viewed from their very bases. The drive continues on through beautiful Cedar Canyon and you arrive at Cedar City at 6:00 P.M., allowing ample time for visiting curio shops after dinner. The Pullmans leave at ten o'clock for Salt Lake City, via Union Pacific System.

TUESDAY—In Salt Lake City your headquarters are the Hotel Utah, where luncheon is served. You spend the afternoon in a drive over the city's broad boulevards, visit the Mormon Temple Grounds, enjoy a "dip" at Saltair Beach. After a generous dinner at the Hotel Utah the evening is yours to do as you choose. At 10:15 P.M. board train for Colorado Springs.

WEDNESDAY—Comfortably quartered in your special Pullmans you experience new thrills on your trip en route to Colorado. The Royal Gorge of the Arkansas with its great and precipitous walls and its rushing river, whose

course you follow through the narrow gorge, is the most spectacular feature of a day of thrills. At Colorado Springs you detrain for an "overnight" at the Antlers Hotel.

THURSDAY—In the morning you have the option of a motor trip to the Summit of Pikes Peak—or the Cheyenne Mountain Circle Trip, including the Garden of the Gods, South Cheyenne Canon, Seven Falls, etc. Train leaves at noon for Denver.

Immediately upon arrival the Denver City and Parks trip will be taken, terminating at the Cosmopolitan Hotel. Automobiles are scheduled to leave the hotel at 10:30 P.M. for the Union Station.

FRIDAY—You'll welcome the quiet comfort of your splendid train and enjoy the opportunity to ponder over the fascinating experiences of the past two weeks as you travel swiftly eastward via the historic "Overland Route." All day your train clips off mile after mile of your journey home, arriving in Omaha in the late afternoon, where you leave the Union Pacific rails and continue on over the "North Western" for the last lap of your journey back to Chicago.

SATURDAY—7:00 A.M.—Chicago—home.

"ZRG" Circle Tours Leave Chicago as Follows:

TOUR
ZRG—1.....Sun., June 19
ZRG—2.....Sun., June 26
ZRG—3.....Sun., July 3

TOUR
ZRG—4.....Sun., July 10
ZRG—5.....Sun., July 17
ZRG—6.....Sun., July 24

TOUR
ZRG—7.....Sun., July 31
ZRG—8.....Sun., Aug. 7
ZRG—9.....Sun., Aug. 14

TOUR
ZRG—10.....Sun., Aug. 21
ZRG—11.....Sun., Aug. 28
ZRG—12.....Sun., Sept. 4

Detailed Schedule

Lv. Chicago, Ill.	9:30 p.m.	Sun.	C. & N. W. Ry.	Ar. Bryce Canyon Lodge.	4:30 p.m.	Sat.	Automobile
Ar. Omaha, Nebr.	9:35 a.m.	Mon.	"	Sunday—Exploring Bryce Canyon from the brink and along the trails.			
Lv. Omaha, Nebr.	10:07 a.m.	Mon.	Un. Pac. Sys.	Lv. Bryce Canyon Lodge.	1:30 p.m.	Mon.	Automobile
Lv. Cheyenne, Wyo.	8:35 p.m.	Mon.	"	Ar. Cedar Breaks.	4:00 p.m.	Mon.	"
Ar. Salt Lake City, Utah.	10:35 a.m.	Tue.	"	Ample time to view this colorful amphitheatre.			
Lv. Salt Lake City, Utah.	11:00 a.m.	Tue.	"	Lv. Cedar Breaks.	4:30 p.m.	Mon.	"
Ar. Lund, Utah.	5:12 p.m.	Tue.	"	Through beautiful Cedar Canyon.			
Seven-Day Automobile Tour of Utah-Arizona				Ar. Cedar City, Utah.	6:00 p.m.	Mon.	"
Scenic Wonderlands				Dinner at El Escalante Hotel.			
Lv. Lund, Utah.	5:20 p.m.	Tue.	Automobile	Lv. Cedar City, Utah.	10:00 p.m.	Mon.	Un. Pac. Sys.
Ar. Cedar City, Utah.	6:10 p.m.	Tue.	"	Ar. Salt Lake City, Utah.	11:40 a.m.	Tue.	"
Headquarters—El Escalante Hotel (Room with bath).				Headquarters—Hotel Utah. City sightseeing trip. Noon Organ			
Lv. Cedar City, Utah.	8:30 a.m.	Wed.	"	Recital at Mormon Tabernacle. Trip to Saltair Beach by automobile.			
Ar. Zion Lodge.	11:00 a.m.	Wed.	"	Lv. Salt Lake City, Utah.	10:15 p.m.	Tue.	D. & R.G.W.R.R.
Wednesday—In Zion Canyon. Many side trips available. Auto				Ar. Colorado Springs, Colo.	6:40 p.m.	Wed.	"
trip to Temple of Sinawava and the Narrows.				Headquarters—Antlers Hotel (Room with bath).			
Lv. Zion Lodge.	1:00 p.m.	Thu.	Automobile	Thursday Morning—Option of trip to Pikes Peak by auto or Garden			
Via the New Mt. Carmel Highway and through beautiful Kaibab				of the Gods, Cheyenne Mountain Circle Drive.			
Forest.				Lv. Colorado Springs, Colo.	12:20 p.m.	Thu.	D. & R.G.W.R.R.
Ar. Grand Canyon Lodge.	6:00 p.m.	Thu.	Automobile	Ar. Denver, Colo.	2:30 p.m.	Thu.	"
Friday—At Grand Canyon. Side trips available.				City sightseeing trip—Dinner at Cosmopolitan Hotel.			
Lv. Grand Canyon Lodge.	9:15 a.m.	Sat.	"	Lv. Denver, Colo.	11:30 p.m.	Thu.	Un. Pac. Sys.
Ar. Kanab Lodge.	12:30 p.m.	Sat.	"	Ar. Omaha, Nebr.	3:25 p.m.	Fri.	"
Lv. Kanab Lodge.	1:30 p.m.	Sat.	"	Lv. Omaha, Nebr.	3:45 p.m.	Fri.	C. & N. W. Ry.
				Ar. Chicago, Ill.	7:00 a.m.	Sat.	"

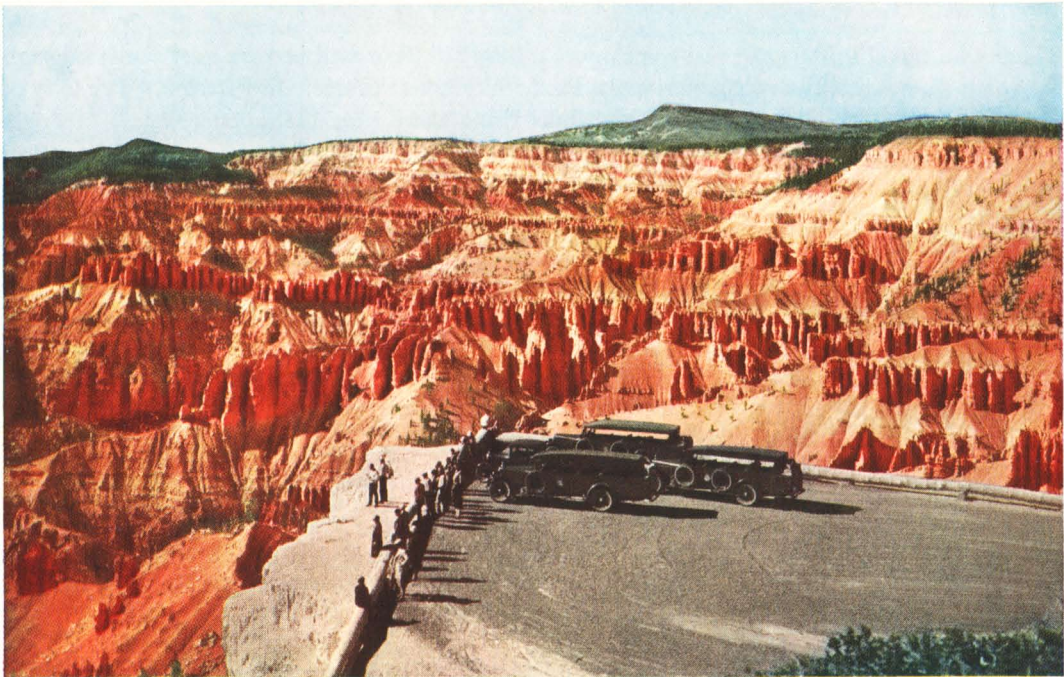
Cost of Complete "ZRG" Circle Tour

FROM CHICAGO, RETURNING TO CHICAGO

	With Rail Ticket	Without Rail Ticket
Two persons occupying a lower berth, each.	\$200.49	\$139.04
One person occupying a lower berth.	219.61	158.16
One person occupying an upper berth.	211.95	150.50
Two persons occupying a compartment, each.	236.35	174.90
Two persons occupying a drawing room, each.	248.85	187.40
Three persons occupying a drawing room, each.	226.35	164.90

Additional compartment and drawing room rates, also rates for incomplete tour on application.

The above rates shown with and without railroad fare of \$61.45 from Chicago, are based on double room with bath at Antlers Hotel, single room with bath will be assigned any passenger booking alone at additional cost of \$2.00.



CEDAR BREAKS



JASPER PARK LODGE HAS AN AIR OF DIGNIFIED INFORMALITY

FOURTEEN DAY "PNW" CIRCLE TOUR

**Pacific Northwest—Mount Rainier and Jasper National Park
Banff—Lake Louise**

Those who travel in the congenial company of a "PNW" Tour will be particularly pleased with the charming hospitality so characteristic of Pacific Northwest people. In Portland, "The City of Roses" . . . Tacoma, built upon the high hills rising sheer from the lapping waters of Puget Sound . . . Seattle, with the snow-capped Olympics to the west and lofty Cascades to the east—here indeed you'll keenly appreciate the fact that you are alive.

Probably no other single feature in the Northwest will appeal to your imagination as will the great white peak described by the Indians as "The Mountain that was God"—Mount Rainier. Victoria and Vancouver in British Columbia are unique and fascinating. And as a climax to a succession of glorious days in the Pacific Northwest, what could surpass the Canadian Rockies? Jasper National Park, Banff, Lake Louise—each a treat in itself—all are visited on the return journey.

In Jasper, the largest National Park and game sanctuary in the world, one may experience all the thrills and romance of the last frontier. Jasper Park Lodge, completely equipped with modern and luxurious comforts, nestles in its wild setting on the shore of Lac Beauvert, surrounded by Alpine peaks—dominated by Mount Edith Cavell, radiant in snow and ice.

And then magnificent Banff—lovely Lake Louise. Someone has said that within the startling areas about Banff and Lake Louise is packed more mountain majesty per square mile than in any other place in the world.

Here, then, is an opportunity to see the Pacific Northwest in all its sublime majesty, and all of the Canadian Rockies . . . at a cost that is invitingly modest.

Day by Day Story of "PNW" Circle Tour

SATURDAY—As you leave Chicago in the evening via the Chicago & North Western Ry. you glance around and marvel at the exquisite loveliness of "The Portland Rose," your traveling home for the next two days. No wonder that its fame has spread since its first sensational trip.

SUNDAY—More happily carefree hours to become better acquainted with the unusual features of your speeding train as it leaves Omaha via the Union Pacific System headed west over historic travel lanes of frontier day fame. Dining car meals, the source of extreme satisfaction on your entire trip will seem even more appetizing in the atmosphere of refinement and finesse of service which is "second nature" on "The Portland Rose."

MONDAY—At Pocatello, Idaho, you cross the main line leading to West Yellowstone, Montana, the Union Pacific's popular entrance to Yellowstone National Park. All day your speeding train carries you over the route of the old Oregon Trail through regions rich in romance, whose panoramas present an endless vision of scenic grandeur.

TUESDAY—Having followed the beautiful Columbia River banks 200 miles during the early morning hours you arrive Multnomah Falls for breakfast at Simmons'-by-the-Falls. Baggage remains in sleeping cars which continue on to Portland. The morning is devoted to a motor trip over spectacular Columbia River Highway via Horsetail Falls to Portland, and includes a tour of the most interesting parts of the city before terminating at the Multnomah Hotel for luncheon. Mid-afternoon leave Portland for Tacoma. Sumptuous dinner in the dining car. Overnight at the Hotel Tacoma—room with bath.

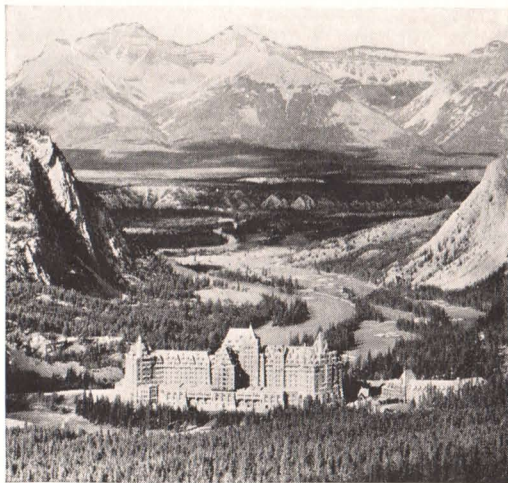
WEDNESDAY—Leave Tacoma at 8:30 A.M. for a delightful motor trip through magnificent virgin forests to Paradise Inn—Mount Rainier's famous hostelry located in the very shadow of "The Mountain." After luncheon you may choose your own method of enjoying numerous beauty spots with which the region about Paradise Inn is honey-combed. Enjoy a hike over the glaciers . . . the thrill of nature coasting . . . viewing the magnificent mountain from new angles. Join a saddle party on a trip across Paradise Valley with its vividly covered carpet of flowers . . . through friendly forests . . . past secluded little lakes whose unrippled surfaces reflecting the mighty mountain add immeasurably to its beauty. Overnight at Paradise Inn—room with bath.

THURSDAY—Leaving Paradise Inn at 8:30 A.M. you travel by motor to Seattle, arriving at the Olympic Hotel

for luncheon, dinner and overnight—room with bath. In the afternoon a leisurely motor trip takes you over twenty-six miles of Seattle's splendid boulevards—along its inland lakes, through University of Washington's campus, Woodland Park, and through the business section as well.

FRIDAY—Leaving Seattle at 9:00 A.M. via Canadian Pacific steamship, you glide northward over the finest scenic approach to British Columbia. Rocky headlands, forested hills, sunny beaches, misty islands slip by across the water on either side of your course. You pass imposing ocean greyhounds, regular line freighters, tramp steamers, and other ships flying the flags of many nations. Arriving at Victoria at 12:45 P.M. you have the entire afternoon to enjoy the English atmosphere of this capital city of British Columbia. A motor trip around the city gives you an excellent opportunity to see the exquisite gardens with their oddly clipped hedges, the drive terminating at the Empress Hotel for dinner. Leave Victoria at midnight by steamer for a cool, refreshing overnight trip to Vancouver.

SATURDAY—Breakfast at the Hotel Georgia, Vancouver. Then a motor trip through the city, the feature of which is the drive through the majestic groves of mammoth fir in Stanley Park. Your interesting city drive ends at the Canadian National station where you climb aboard the train which awaits your arrival to speed you on to Jasper National Park. All afternoon you are in the mountains. Tunnels penetrate the headlands and lofty bridges span the ravines. For miles you follow the course of rushing rivers with their roaring cataracts. The scenery, magnificently impressive all the way, is but a foretaste of what will greet you next day.



BANFF SPRINGS HOTEL IN ITS MAGNIFICENT SETTING



MOUNT RAINIER—THE "MIGHTY MONARCH"

SUNDAY—Arrive Jasper shortly after breakfast in the diner. All day is spent in Jasper National Park, enjoying to the utmost whatever you may choose of a wide variety of outdoor sports and scenic mountain marvels. A motor trip to glacier-girt Mt. Edith Cavell is included for you in the day's activities, and a delightful treat it is. The night is spent at Jasper Park Lodge (room with bath).

MONDAY—En route to Calgary, you have an opportunity to rest in comfortable travel luxury in preparation for the active days in another group of the Canadian Rockies' superb show-places. A stop is made at Edmonton, the capital of Alberta. Dinner at The Macdonald, Edmonton.

TUESDAY—Leaving Calgary by motor, after breakfast at the Palliser Hotel, the automobile highway parallels the Bow River and as you travel westward, the mountains are directly in front of you. A stop is made at Ghost Dam, thence through the gate and into Banff National Park. After luncheon at Banff Springs Hotel, you motor through the mountains to Lake Louise, stopping en route at Johnson's Canyon, a narrow gorge cut through lofty granite mountains. Lake Louise, whose dark blue waters reflect the many towering peaks which rise sheer from the water's

edge, is "tremendous." The Chateau on the shore of Lake Louise, surrounded by immense poppy beds, is exquisite.

WEDNESDAY—Shortly before noon, you start on the return motor trip to Calgary, after a delightful morning spent in storing away in your memory one enchanting picture after another—pictures you will never forget. Traversing winding corridors through the mountains, pausing for luncheon at Banff Springs Hotel, you arrive in Calgary in the early evening, where the train waits to speed you on your journey home.

THURSDAY—All day across the vast stretches of Canada's gleaming wheat fields with an opportunity to "stretch a bit" at Saskatoon for an hour at midday, and at Regina in the early evening.

FRIDAY—Winnipeg is reached at eight o'clock. You travel all day through the virgin timberlands and game fish country of the Lake of the Woods regions, en route to Duluth. Every mile offers unusual scenic thrills. Duluth early evening . . . and only overnight to your journey's end.

SATURDAY—Arrive Chicago in mid-forenoon at the Chicago & North Western Railway's Chicago Passenger Station.

"PNW" Circle Tours Leave Chicago as Follows:

TOUR
PNW—1 Sat., July 2

TOUR
PNW—2 Sat., July 16

TOUR
PNW—3 Sat., July 30

TOUR
PNW—4 Sat., Aug. 13



"MEALS THAT APPEAL" ADD TO YOUR JOYS

Detailed Schedule

Lv. Chicago, Ill. 10:15 p.m.	Sat.	C. & N. W. Ry.	Headquarters—Jasper Park Lodge (room with bath).		
Ar. Omaha, Nebr. 9:45 a.m.	Sun.		Automobile trip to Mt. Edith Cavell.		
Lv. Omaha, Nebr. 10:05 a.m.	Sun.	Un. Pac. Sys.	Lv. Jasper Park, Alta. 10:15 a.m.	Mon.	Can. Nat'l. Ry.
Lv. Cheyenne, Wyo. 8:10 p.m.	Sun.	"	Ar. Edmonton, Alta. 5:15 p.m.	Mon.	"
Lv. Pocatello, Idaho. 10:25 a.m.	Mon.	"	Dinner at Macdonald Hotel.		
Ar. Multnomah Falls, Oregon. 6:40 a.m.	Tue.		Lv. Edmonton, Alta. 10:00 p.m.	Mon.	"
Breakfast at Simmons-by-the-Falls. Columbia River Highway Trip by automobile to Portland, including City Parks. Luncheon at Multnomah Hotel.			Ar. Calgary, Alta. 6:25 a.m.	Tue.	"
Lv. Portland, Oregon. 4:30 p.m.	Tue.	Gt. Nor. Ry.	Lv. Calgary, Alta. 9:00 a.m.	Tue.	Automobile
Ar. Tacoma, Wash. 8:15 p.m.	Tue.		Ar. Banff Springs, Alta. 12:30 p.m.	Tue.	"
Headquarters—Tacoma Hotel (room with bath).			Luncheon at Banff Springs Hotel. Sightseeing tour of Banff.		
Lv. Tacoma, Wash. 8:30 a.m.	Wed.	Automobile	Lv. Banff Springs, Alta. 2:30 p.m.	Tue.	Automobile
Ar. Paradise Inn. 11:50 a.m.	Wed.	"	Ar. Lake Louise, Alta. 5:00 p.m.	Tue.	"
Headquarters—Paradise Inn (room with bath).			Headquarters—Chateau Lake Louise (room with bath).		
Lv. Paradise Inn. 8:30 a.m.	Thu.	"	Lv. Lake Louise, Alta. 10:00 a.m.	Wed.	"
Ar. Seattle, Wash. 11:50 a.m.	Thu.	"	Ar. Banff Springs, Alta. 11:58 a.m.	Wed.	"
Headquarters—Olympic Hotel (room with bath).			Luncheon at Banff Springs Hotel.		
City sightseeing trip.			Lv. Banff Springs, Alta. 2:45 p.m.	Wed.	"
Lv. Seattle, Wash. 9:00 a.m.	Fri.	Can. Pac. SS.	Ar. Calgary, Alta. 6:15 p.m.	Wed.	"
Luncheon on Steamer.			Lv. Calgary, Alta. 6:40 p.m.	Wed.	Can. Nat'l Ry.
Ar. Victoria, B. C. 12:45 p.m.	Fri.	"	Ar. Saskatoon, Sask. 11:00 a.m.	Thu.	"
Headquarters—Empress Hotel. Sightseeing Tour of Victoria.			Lv. Saskatoon, Sask. 12:00 noon	Thu.	"
Lv. Victoria, B. C. 11:59 p.m.	Fri.	Can. Pac. SS.	Ar. Winnipeg, Man. 8:00 a.m.	Fri.	"
Ar. Vancouver, B. C. 7:00 a.m.	Sat.	"	Lv. Winnipeg, Man. 8:50 a.m.	Fri.	"
Headquarters—Georgia Hotel. City sightseeing trip of Vancouver.			Ar. Duluth, Minn. 8:05 p.m.	Fri.	"
Lv. Vancouver, B. C. 1:15 p.m.	Sat.	Can. Nat'l Ry.	Lv. Duluth, Minn. 8:30 p.m.	Fri.	C. & N. W. Ry.
Ar. Jasper Park, Alta. 9:00 a.m.	Sun.	"	Ar. Chicago, Ill. 9:45 a.m.	Sat.	"

Cost of Complete "PNW" Circle Tour

FROM CHICAGO, RETURNING TO CHICAGO

	With Rail Ticket	Without Rail Ticket
Two persons occupying a lower berth, each.	\$231.91	\$141.61
One person occupying a lower berth.	255.91	165.61
One person occupying an upper berth.	246.30	156.00
Two persons occupying a compartment, each.	275.66	185.36
Two persons occupying a drawing room, each.	292.90	202.60
Three persons occupying a drawing room, each.	264.57	174.27

Additional compartment and drawing room rates, also rates for incomplete tour on application.

The above rates shown with and without railroad fare of \$90.30 from Chicago, are based on double rooms with bath at all hotels. Single room with bath will be assigned any passenger booking alone at additional cost of \$5.25.



A TYPICAL STREET SCENE IN SAN FRANCISCO'S CHINATOWN



ROYAL PALMS, SAN PEDRO, CALIFORNIA

FIFTEEN DAY "C" CIRCLE TOUR

California—Old Mexico—Yosemite National Park

Small wonder that the name of California has the power to stir the blood of present day adventurers! Sapphire skies . . . the blue Pacific . . . snow-capped mountain peaks—all bathed in the warm glow of the Southern Sun. Long sweeps of sandy beach, bordered by inviting, palm-lined boulevards . . . shady, winding paths through forests of majestic redwoods, past waterfalls, into deep canyons.

Los Angeles, the "City of Angels," is worth a bookful of description. Its boulevards, and those of its suburbs, lead past miles of Spanish-type bungalows, their bright-colored roofs sharply contrasted against the blue California sky, their lawns bordered with luxurious plant life that the semi-tropical climate provides. Acres of orange and walnut groves compete for your attention with the gaunt derricks of the oil fields.

To the west of the city, almost a part of it, are the beach cities. Out beyond them rises Santa Catalina Island, to which deep-sea anglers come from the world over to do battle with big game fish that inhabit its waters—tuna, albacore, seabass, yellowtail and swordfish.

Down the coast to the South are numerous picturesque oceanside towns . . . fashionable La Jolla . . . San Diego. A few miles below San Diego, the Mexican border . . . Tijuana . . . Agua Caliente—brilliant, gay, the "Deauville of America." Riverside, in the heart of a region of rich citrus groves, boasts broad avenues shaded with eucalyptus and feathery pepper trees—home of the romantic Glenwood Mission Inn.

At Santa Barbara is perhaps the best known of the historic Spanish missions, situated on what is undoubtedly the world's most famous highway—El Camino Real. From San Diego to San Francisco, El Camino Real—the King's Highway—marks the route followed by the Spanish monks when they founded the great chain of Missions along California's coast. A number of them are still in use.

Yosemite, the beautiful, is another of the West's wonderlands—where the enthusiast for scenery loses his power of expression. The Valley—lovely, green, pine-needle carpeted—is watched over by majestic granite domes, fringed by feathery waterfalls and stupendous cataracts. And to the south of the valley—Mariposa Grove of Big Trees—Nature's most unusual show of living wonders . . . the world's oldest, tallest trees.

And San Francisco . . . the largest city of northern California . . . one of the most beloved cities in the United States among those who travel. Its great harbor brings to its streets the people of every nation. Sailors from Greece rub elbows with those from Norway on the waterfront. The placid Hollander is found at the tables of the same cafe with the excitable Spaniard.

One of the most vivid memories of San Francisco that is carried away by the visitor, is that of its Chinatown, an entire large district whose teeming population is Chinese, whose atmosphere is distinctly oriental.

The greatness of Rome is somehow associated—whether correctly or not—with the fact that it was built on seven hills. How much greater, then, should San Francisco be, standing on fourteen hills?

Across the Bay to the north is lofty, dignified Mt. Tamalpais, with the redwoods of Muir Woods in a valley between. Eastward, beyond another arm of the Bay, are Oakland and its thriving industries; Berkeley, the white campanile of the university dominating the campus; Alameda, a charming residential town.

Visit California this summer. Go quickly, comfortably, without a care, on an Overland Route "C" Circle Tour. You'll be surprised how effectively you can "do" California—within the average two weeks' vacation period—and how inexpensive it really is.



SANTA MONICA MOUNTAINS—AVENUE OF PALMS



AT BRILLIANT AGUA CALIENTE, "THE DEAUVILLE OF AMERICA"



OCEAN DRIVE LA JOLLA, CALIFORNIA

Day by Day Story of "C" Circle Tour

SATURDAY—The train selected for your trip across the country to California is the luxurious Los Angeles Limited, which provides every feature of extra fare service, yet, at no extra-fare. Barber, maid, valet, bath. You leave Chicago in the evening via the Chicago & North Western Railway, using this pioneer western road as far as Omaha.

SUNDAY—A brief pause at Omaha and then straight west via the Union Pacific System's superlative roadbed, following the shortest, most direct and scenic route to the Pacific Coast.

MONDAY—In the morning you will enjoy beautiful Weber Canyon through which you pass before entering Ogden. A brief stop in Ogden, and in Salt Lake, then skirting the shores of Great Salt Lake, your splendid train speeds across the great open spaces that separate the Wasatch Mountains of Utah from the Pacific Coast Ranges.

TUESDAY—During breakfast on the train, you get your first vista of California's palm-studded boulevards, vast citrus fruit groves and mountain backgrounds—their heights possibly just peeking out from behind the early morning mist as Old Sol, whose rays are brightest in California, follows his course higher into the heavens. Then, Los Angeles and after "moving in" at the Hotel Alexandria or the Biltmore (room with bath), you motor away for a visit to Glendale . . . to Hollywood . . . to Beverly Hills

. . . and the beach cities—Santa Monica, Ocean Park, Venice, Hermosa, Redondo. After luncheon you visit one of the "movie lots" to see how "talkies" are made.

WEDNESDAY—An ocean trip to Santa Catalina, with its bustling town of Avalon clutching the steep slopes of the island. Luncheon at the Hotel St. Catherine . . . a trip over the beautiful submarine gardens in a glass bottom boat . . . then back across the Pacific's lane to Los Angeles Harbor and to your hotel for dinner.

THURSDAY—A morning of rest, if you wish. In the afternoon, en route to San Diego by parlor car motor bus, you stop at seaside Long Beach, then continue on along the scenic coast highway past the rare Torrey Pines, through lovely La Jolla, arriving San Diego by way of Point Loma with its Marine Barracks, Naval Training Station and Flying Fields.

FRIDAY—Away again after breakfast, by motor bus, through tropical Balboa Park, down across the Mexican border through Tijuana and then—Agua Caliente . . . exotic, elegant, different. Luncheon at Agua Caliente, and in early afternoon leave for another delightful drive north over an excellent highway through expansive olive orchards, the Temecula Valley, past Lake Elsinore and the University of California Citrus Fruit Experimental Farm, and into Riverside for dinner and overnight at the romantic Glenwood Mission Inn. Room with bath.

SATURDAY—Leaving Riverside in the morning, the trip by motor to Pasadena takes you over typical, colorful California countrysides. Luncheon at the Maryland Hotel in Pasadena and then, again by motor to Santa Barbara for dinner and a pleasant overnight stay at El Mirasol Hotel.

SUNDAY—A delightful drive about the city, visiting Santa Barbara Mission and the aristocratic suburban estates with their gorgeous gardens, returning to El Mirasol for luncheon. Then, by motor to Los Angeles and, after dinner, you board the train for an overnight ride to Yosemite National Park.

MONDAY—Arriving Merced you continue on via the Yosemite Valley Railroad to El Portal where roomy motor busses await your arrival to carry you to Curry Lodge—your Park headquarters. In the afternoon a trip around the valley floor by bus unfolds the resplendent region in all its loveliness . . . El Capitan, Yosemite Falls, Sentinel Rock, Mirror Lake, Happy Isles. Dancing and entertainment enliven the evening hours, the feature of which is the unique "Fire Fall" from Glacier Point.

TUESDAY—An all-day drive to the Mariposa Grove of Big Trees and return. Your automobile makes a complete tour of the grove, going through Wawona (Tunnel Tree),

the most noted of them all. Luncheon at Wawona Hotel. Dinner at Curry Lodge from where you leave at 9:00 P.M. for an overnight trip to Oakland—by train from El Portal.

WEDNESDAY—Breakfast at our San Francisco headquarters, the Clift Hotel. Follow your own inclinations during the morning hours. After luncheon a thirty-mile drive includes business and residential San Francisco, Civic Center, Twin Peaks, Golden Gate Park, Cliff House, the Presidio and Mission Dolores.

THURSDAY—Sleep, if you wish, or spend the morning as you choose. After luncheon say "Good bye" to the Clift Hotel, ferry across the Bay for a motor trip through the intriguing cities of Oakland, Berkeley and Piedmont. Leave Oakland 6:55 P.M. on one of the famous transcontinental trains—the San Francisco Overland Limited.

FRIDAY and SATURDAY—En route east on the San Francisco Overland Limited, finest and fastest no-extra-fare train between San Francisco and Chicago. Via the Overland Route, of course—direct, scenic. Greatest single feature of the train trip?—"Going to sea by rail" across Great Salt Lake, entering Ogden.

SUNDAY—Arrive Chicago after breakfast, in ample time to make eastern connections.

If Time Permits—Hawaii

In connection with our all-expense California tours operated during the summer season, all inclusive tours to Hawaii have been arranged. These are most ideal trips, combining rail and water travel, and for which the finest of Trans-Pacific steamers will be used.

In Hawaii life seems most serene . . . the moonlight even fairer . . . the waters off the beach of softer touch. In the halls of great hotels the famous of the world are seen; beneath the palms are lovers seated; and over all there breathes the mystic spell of Island music, played by native boys when Even-tide has come.

Whatever time is chosen, the traveler may be assured his trip will bring a round of perfect memories . . . the charm

of Island life never ceases. Throughout the months are scattered those events that picture once again the native lore. Festivals, holidays bring back the memory of the time when regal chieftains strode Hawaii's paths, and throughout it all is intertwined the charm of native hospitality.

No place in all the world can quite compare as a playtime land. With ocean currents sweeping by and the tempered Trade Winds overhead, the heat and cold of other lands is never known and the only use of charted months is to mark the passing of the years.

Ask for complete information regarding these all inclusive tours to Hawaii.



THE BEACH—SANTA MONICA

"C" Circle Tours Leave Chicago as Follows:

TOUR C-1.....Sat., July 2	TOUR C-2.....Sat., July 16	TOUR C-3.....Sat., July 30	TOUR C-4.....Sat., Aug. 13
------------------------------	-------------------------------	-------------------------------	-------------------------------

Detailed Schedule

Lv. Chicago, Ill.....	9:30 p.m.	Sat.	C. & N. W. Ry.
Ar. Omaha, Nebr.....	9:35 a.m.	Sun.	"
Lv. Omaha, Nebr.....	10:07 a.m.	Sun.	Un. Pac. Sys.
Lv. Cheyenne, Wyo.....	8:35 p.m.	Sun.	"
Ar. Salt Lake City, Utah.....	10:35 a.m.	Mon.	"
Lv. Salt Lake City, Utah.....	11:00 a.m.	Mon.	"
Lv. Lund, Utah.....	5:12 p.m.	Mon.	"

NOTE: Tours arranged to connect at Lund with "ZRG" Tours.

Ar. Los Angeles, Calif.....	8:30 a.m.	Tue.	Un. Pac. Sys.
Headquarters—"A" Alexandria Hotel; "B" Biltmore Hotel (room with bath).			
Tuesday—Trip to Hollywood-Beverly Hills-Beaches-Universal City.			
Wednesday—Trip to Catalina Island.			
Lv. Los Angeles, Calif.....	1:00 p.m.	Thu.	Automobile
Via Point Loma.			
Ar. San Diego, Calif.....	5:30 p.m.	Thu.	"
Headquarters—San Diego Hotel (room with bath)			



PATIO GLENWOOD MISSION INN

Lv. San Diego, Calif.....	9:45 a.m.	Fri.	Automobile
Via Balboa Park and Tijuana.			
Ar. Agua Caliente, Old Mexico.....	11:30 a.m.	Fri.	"
Luncheon at Agua Caliente.			
Lv. Agua Caliente, Old Mexico.....	1:00 p.m.	Fri.	"
Ar. Riverside, Calif.....	5:30 p.m.	Fri.	"
Headquarters—Glenwood Mission Inn (room with bath).			
Lv. Riverside, Calif.....	10:00 a.m.	Sat.	Automobile
Ar. Pasadena, Calif.....	11:45 a.m.	Sat.	"
Luncheon at the Maryland Hotel.			
Lv. Pasadena, Calif.....	1:30 p.m.	Sat.	"
Ar. Santa Barbara, Calif.....	5:30 p.m.	Sat.	"
Headquarters—El Mirasol Hotel (room with bath).			
Sunday—Sightseeing tour of Santa Barbara and suburbs.			
Lv. Santa Barbara, Calif.....	2:00 p.m.	Sun.	Automobile
Ar. Los Angeles, Calif.....	6:00 p.m.	Sun.	"
Lv. Los Angeles, Calif.....	7:40 p.m.	Sun.	Sou. Pac. Sys.
Ar. Merced, Calif.....	6:28 a.m.	Mon.	"
Lv. Merced, Calif.....	6:45 a.m.	Mon.	Y. V. R. R.
Ar. El Portal, Calif.....	10:30 a.m.	Mon.	"
Lv. El Portal, Calif.....	10:45 a.m.	Mon.	Automobile
Ar. Yosemite Valley.....	11:30 p.m.	Mon.	"
Headquarters—Curry Lodge.			
Monday afternoon—Floor of the Valley Trip.			
Lv. Yosemite Valley.....	8:30 a.m.	Tue.	"
Ar. Mariposa Grove.....	10:50 a.m.	Tue.	"
Lv. Mariposa Grove.....	11:50 a.m.	Tue.	"
Ar. Wawona.....	12:30 p.m.	Tue.	"
Luncheon—Wawona Hotel.			
Lv. Wawona.....	2:00 p.m.	Tue.	"
Ar. Yosemite Valley.....	4:00 p.m.	Tue.	"
Lv. Yosemite Valley.....	9:00 p.m.	Tue.	"
Ar. El Portal, Calif.....	9:40 p.m.	Tue.	"
Lv. El Portal, Calif.....	9:45 p.m.	Tue.	Y. V. R. R.
Ar. Merced, Calif.....	1:45 a.m.	Wed.	"
Lv. Merced, Calif.....	2:10 a.m.	Wed.	Sou. Pac. Ry.
Ar. Oakland, Calif.....	7:40 a.m.	Wed.	"
Ar. San Francisco, Calif.....	8:10 a.m.	Wed.	"
Headquarters—Clift Hotel (room with bath).			
Wednesday afternoon—Thirty Mile Drive.			
Thursday afternoon—Oakland, Berkeley, Piedmont Trip.			
Lv. Oakland, Calif.....	6:55 p.m.	Thu.	Sou. Pac. Ry.
Ar. Ogden, Utah.....	5:40 p.m.	Fri.	"
Lv. Ogden, Utah.....	7:00 p.m.	Fri.	Un. Pac. Sys.
Ar. Omaha, Nebr.....	8:15 p.m.	Sat.	"
Lv. Omaha, Nebr.....	8:47 p.m.	Sat.	C. & N. W. Ry.
Ar. Chicago, Ill.....	9:15 a.m.	Sun.	"

Cost of Complete "C" Circle Tour

FROM CHICAGO, RETURNING TO CHICAGO

	Alexandria Hotel		Biltmore Hotel	
	With Rail Ticket	Without Rail Ticket	With Rail Ticket	Without Rail Ticket
Two persons occupying a lower berth, each.....	\$249.98	\$159.68	\$253.33	\$163.03
One person occupying a lower berth.....	277.72	187.42	281.07	190.77
One person occupying an upper berth.....	266.61	176.31	269.96	179.66
Two persons occupying a compartment, each.....	300.60	210.30	303.95	213.65
Two persons occupying a drawing room, each.....	321.21	230.91	324.56	234.26
Three persons occupying a drawing room, each.....	288.21	197.91	291.56	201.26

Additional compartment and drawing room rates, also rates for incomplete tour on application.

The rates shown above with and without railroad fare of \$90.30 from Chicago are based on double rooms with bath at all Hotels. Single room with bath will be assigned any passenger booking alone at additional cost of \$5.00.



S. S. PRINCE RUPERT, OCEAN FALLS

TWENTY-FOUR DAY "A" CIRCLE TOUR

Pacific Northwest—Alaska—Canadian Rockies

"Overland Route" Circle Tours to Alaska offer you mile upon mile of fast, comfortable, luxurious and restful train travel, traversing intensely interesting regions rich in colorful panoramas . . . pleasure-packed days midst the charming features of the famed Pacific Northwest . . . intimate glimpses of Canada's thriving West Coast cities . . . a glorious voyage through one of the most spectacular steamship lanes on the globe—the Inside Passage.

The calm, placid waters of the Inside Passage, like an inland sea, are protected from the ocean's turbulence by thousands of islands that dot the coast line all the way from Seattle to Skagway. Lining this unusual water boulevard are forest-covered and snow-topped mountain ranges whose sublimity is doubly beautiful, being mirrored in perfect likeness in the silvery surface of the water.

Probably the most unusual single feature of your cruise to Skagway is Taku Glacier. Your ship coasts slowly by this spectacle to allow a lingering view of its impressive magnitude—three hundred miles of ice, fronting the water in a mile-wide palisade that dwarfs your ship to insignificance. Jade green and blue, apparently as still as death, yet actually in motion, it carries the imprisoned snows of some far field in gleaming, tumbled ice blocks to the sea.

After the restful cruise back to Prince Rupert, comes a delightful trip by train through the heart of mountain fastnesses . . . then a day in Jasper National Park with its 4,200 square miles of unspoiled nature. Here is Mt. Edith Cavell, lifting its snow-crowned head to the heavens . . . Maligne Lake, set in a circle of towering peaks . . . Mt. Robson, whose precipitous ramparts loom over the Lilliputian human beholder like the hand of fate. Then Banff and glorious Lake Louise, its dark blue waters reflecting the many towering peaks that rise from the water's edge. Many scenic treasure hunters will make the comfortable "trek" to Alaska this summer. Enjoy their charming company on an Overland Route "A" Circle Tour.



ALONG THE COLUMBIA RIVER VIA THE UNION PACIFIC

Day by Day Story of "A" Circle Tour

SUNDAY—Leaving Chicago in the late evening, you are surrounded with every travel luxury on one of the nation's most exquisite trains—the "Portland Rose." Chicago & North Western Railway speeds you over the first lap of your trip to Omaha.

MONDAY — TUESDAY—From Omaha west, Union Pacific System assures your complete comfort over its "finest roadbed in the nation." Delicious dining car "meals that appeal" are served you all the way.

WEDNESDAY—Detrain at Multnomah Falls for breakfast at Simmons' by-the-Falls, after which a most fascinating trip following the Columbia River Highway—passing Latourelle, Wahkeena, Multnomah and Horsetail Falls, stopping at Shepperd's Dell, the Fish Hatchery at Bonneville and Cascade Locks. Luncheon at Multnomah Hotel, Portland. Leave Portland 4:30 P.M. for an overnight stay at the Hotel Tacoma—room with bath provided, as at all hotels on this tour.

THURSDAY—Leaving Tacoma at 8:30 A.M. by motor you arrive at Paradise Inn in Rainier National Park, before luncheon. The afternoon is yours to enjoy the innumerable activities which this magnificent playground offers.

FRIDAY—Leave Paradise Inn at 8:30 A.M. and motor through virgin stands of towering trees, over excellent

highways, to Seattle, arriving at noon. Headquarters at the Olympic Hotel.

In the afternoon, a comfortable drive acquaints you with the charm of this prosperous city. You visit its many parks, the campus of the University of Washington, Lake Washington, the Ship Canal and the Harbor.

SATURDAY—Leave Seattle by steamer for a taste of salt water cruising en route to Victoria, B. C. Luncheon aboard ship. You arrive Victoria in time for motor trip around this most interesting capital city of British Columbia with its decidedly English atmosphere, buildings and unusual gardens. Dinner and an overnight stay at the Empress Hotel.

SUNDAY—The morning is "your own." After luncheon at the splendid Empress Hotel, you steam quietly out of Victoria Harbor for Vancouver, arriving in time for dinner at the Hotel Georgia, your home for the night.

MONDAY—In the morning, a delightful drive takes you through Stanley Park, one of the largest natural parks in the world, and famous for its majestic groves of mammoth fir. You visit the Shakespearean Gardens and inspect historic totems. The afternoon and early evening are left open. "All ashore, 'at's going ashore," at 10:00 P.M. and you slip away from your moorings amidst a shower of confetti, a blaze of music and a bedlam of "bon voyages."

TUESDAY—For the next three days, your steamer glides through a world of blue waters, green shores and mistily blue mountains—a veritable dream ship in a dream world, calling at Powell River and Ocean Falls.

WEDNESDAY—Deck sports of all sorts, dancing every evening, impromptu programs, all add zest to your hours on shipboard. You call at fascinating British Columbia and Alaskan ports—Prince Rupert and Ketchikan. Each has its own fascinating features, each its peculiar romantic history.

THURSDAY—Just before you come upon Juneau, you pass at close range the most massive of glaciers to be seen on the entire trip—Taku Glacier.

Juneau, guarded by Mounts Robert and Juneau, is visited before you start into the Lynn Canal—the glorious home stretch to Skagway. Juneau is a fishing center and the home of quartz mining on a large scale. Its curio shops, like those in the other interesting places which you visit, sell miniature totems, nuggets, furs, Indian blankets, ivories, baskets, walrus teeth and other little knickknacks by the score, which will recall to you in after years—Alaska.

FRIDAY—Arriving at Skagway, "The Flower City" of the Northland, you prepare for a thrilling two-day trip into the interior. After breakfasting on the boat, you leave via the White Pass and Yukon Route for Carcross, over some of the most unique miles of railroad right-of-way in the world. At Carcross, you board the steamer "Tutshi" for a cruise through the heart of the mountains to "Ben-My-Chree," a gracious little settlement. The cordial welcome, the stirring reception accorded visitors to this haven of happiness, is an experience which you will long remember. Retracing your course overnight, you arrive at Carcross in the early morning.

SATURDAY—Upon arriving at Carcross, you entrain for Skagway, stopping en route at Bennett for luncheon. Bennett is situated at the head of beautiful Lake Bennett and is the point where those who came over the Chilkoot and White Pass trails built their rafts and small boats to continue their journey into the Klondike. You arrive at Skagway at 4:30 P.M. with time to visit the attractions of the city before dining on the steamer and embarking in the early evening for Prince Rupert.

SUNDAY—Again en route through the Inside Passage, you have the feeling of being "back home" as you take up your routine aboard ship, where you left off when you disembarked at Skagway.

MONDAY—Arriving Prince Rupert in the morning, you reluctantly leave your steamer cabin. However, you are soon comfortably settled on the Canadian National

Railways' "Continental Limited," for the first lap of your eastbound journey.

TUESDAY—All day long you traverse territory whose lovely landscapes evoke "Oh's! and Ah's!" from the most traveled people. At Jasper National Park Station, automobiles await your arrival to speed you to Jasper Park Lodge.

WEDNESDAY—Mountains completely encircle the Lodge—mountains whose excellent trails and motor-ways invite your inspection during the morning which is left open for you to do as you will. In the afternoon, a motor trip takes you over thirty-six miles of mountain roadway on which you visit Ghost Glacier at the base of lovely Mt. Edith Cavell.

THURSDAY—Leave Jasper National Park at 10:15 A.M. for Edmonton. It is an enjoyable daylight trip across Canada's broad wheat fields. Dinner at The Macdonald. Leave 10:00 P.M. for overnight trip to Calgary.

FRIDAY—Breakfast at the Palliser Hotel, Calgary—then by motor to Banff Springs Hotel for luncheon. The afternoon trip through spectacular Johnson Canyon comes to a climax at the picturesque, smart Chateau, situated on the shore of the lovely Lake Louise. You spend the night at the Chateau, whose evening hours are crowded with entertainment features.

SATURDAY—Glorious morning hours at sublime Lake Louise! Go where you will—do as you please. Innumerable trails invite you to hike or ride to vantage points which unfold for you broad sweeps of unbelievable beauty. Luncheon at the Chateau. In the afternoon you return to Banff, where you "put up" at the Banff Springs Hotel for a full day of thrills.

SUNDAY—Banff—golf . . . swim . . . hike . . . sit in the saddle . . . every outdoor sport. Leave Banff 2:45 P.M.—arrive Calgary 6:15, from where you are whisked away in your special Pullmans bound for home.

MONDAY—Across Canada's vast acres of world-renowned wheat lands, pausing at her energetic cities of thriving industry, your entire day is crowded with interest in an intimate picture of how your Canadian neighbors live.

TUESDAY—A brief stop at Winnipeg in the morning—at Duluth in the evening and you start on the "last lap" of your homeward journey.

WEDNESDAY—About to bid farewell to your fellow travelers you are impressed most forcibly with the charming companionship which has added infinitely to the joys of your care-free days of vacation pleasure. Soon after breakfast you arrive in Chicago, the possessor of a wealth of mental treasures which will remain with you always.

"A" Circle Tours Leave Chicago as Follows:

TOUR
A—1.....Sun., July 3

TOUR
A—2.....Sun., Aug 7.

Detailed Schedule

Lv. Chicago, Ill.....	10:15 p.m.	Sun.	C. & N. W. Ry.
Ar. Omaha, Nebr.....	9:45 a.m.	Mon.	"
Lv. Omaha, Nebr.....	10:05 a.m.	Mon.	Un. Pac. Sys.
Lv. Cheyenne, Wyo.....	8:10 p.m.	Mon.	"
Lv. Pocatello, Idaho.....	10:25 a.m.	Tue.	"
Ar. Multnomah Falls, Ore.....	6:45 a.m.	Wed.	"

Breakfast—Simmons' by-the-Falls. Columbia River Highway Trip

by automobile to Portland, including City Park Drive. Luncheon—Multnomah Hotel.			
Lv. Portland, Ore.....	4:30 p.m.	Wed.	Gt. Nor. Ry.
Ar. Tacoma, Wash.....	8:15 p.m.	Wed.	"
Headquarters—Tacoma Hotel (room with bath).			
Lv. Tacoma, Wash.....	8:30 a.m.	Thu.	Automobile
Ar. Paradise Inn.....	11:50 a.m.	Thu.	"
Headquarters—Paradise Inn (room with bath).			



"SURROUNDED WITH EVERY TRAVEL LUXURY"

Detailed Schedule—Continued

Lv. Paradise Inn.....	8:00 a.m.	Fri.	Automobile	Headquarters—Jasper Park Lodge (room with bath).	Wednesday
Ar. Seattle, Wash.....	11:50 a.m.	Fri.	"	morning—Mt. Edith Cavell Trip.	
Headquarters—Olympic Hotel (room with bath).				Lv. Jasper Park, Alta. (M.T.).....	10:15 a.m. Thu. Can. Nat. Ry.
City Sightseeing Trip Friday afternoon.				Ar. Edmonton, Alta.	5:15 p.m. Thu. "
Lv. Seattle, Wash.....	9:00 a.m.	Sat.	Can. Pac. S.S.	Dinner at MacDonald Hotel.	
Luncheon on Steamer.			"	Lv. Edmonton, Alta.	10:00 p.m. Thu. "
Ar. Victoria, B. C.	12:45 p.m.	Sat.	"	Ar. Calgary, Alta.	6:25 a.m. Fri. "
Headquarters—Empress Hotel (room with bath).				Breakfast at Palliser Hotel.	
Saturday afternoon—City Sightseeing Trip.				Lv. Calgary, Alta.	8:30 a.m. Fri. Automobile
Lv. Victoria, B. C.	1:45 p.m.	Sun.	Can. Pac. S.S.	Ar. Banff Springs, Alta.	11:55 a.m. Fri. "
Ar. Vancouver, B. C.	5:45 p.m.	Sun.	"	Luncheon at Banff Springs Hotel.	
Headquarters—Hotel Georgia (room with bath).				Lv. Banff Springs, Alta.	2:30 p.m. Fri. "
Monday morning—City Sightseeing Trip.				Via Johnson Canyon.	
Lv. Vancouver, B. C.	10:00 p.m.	Mon.	Can. Nat. S.S.	Ar. Lake Louise, Alta.	5:00 p.m. Fri. "
Ar. Prince Rupert, B. C.	11:30 a.m.	Wed.	"	Headquarters—Chateau Lake Louise (room with bath).	
Lv. Prince Rupert, B. C.	3:00 p.m.	Wed.	"	Lv. Lake Louise, Alta.	2:30 p.m. Sat. "
Ar. Skagway, Alaska (A.T.).....	8:00 a.m.	Fri.	W. P. & Y. Ry.	Ar. Banff Springs, Alta.	4:30 p.m. Sat. "
Ar. Carcross, Y. T.	12:45 p.m.	Fri.	W. P. & Y. S.S.	Headquarters—Banff Springs Hotel (room with bath)	
Lv. Carcross, Y. T.	1:00 p.m.	Fri.	W. P. & Y. S.S.	Sightseeing Tour of Banff.	
Ar. West Taku Arm.....	7:00 p.m.	Fri.	"	Lv. Banff Springs, Alta.	2:45 p.m. Sun. Automobile
Lv. West Taku Arm.....	3:00 a.m.	Sat.	"	Ar. Calgary, Alta.	6:15 p.m. Sun. "
Ar. Carcross, Y. T.	9:00 a.m.	Sat.	"	Lv. Calgary, Alta.	6:40 p.m. Sun. Can. Nat. Ry.
Lv. Carcross, Y. T.	11:50 a.m.	Sat.	W. P. & Y. Ry.	Ar. Saskatoon, Sask.	11:00 a.m. Mon. "
Ar. Skagway, Alaska (A.T.).....	4:30 p.m.	Sat.	"	Lv. Saskatoon, Sask.	12:00 noon Mon. "
Ar. Prince Rupert, B. C.	7:00 a.m.	Mon.	Can. Nat. S.S.	Ar. Winnipeg, Man.	8:00 a.m. Tue. "
Lv. Prince Rupert, B. C.	12:30 p.m.	Mon.	Can. Nat. Ry.	Lv. Winnipeg, Man.	8:50 a.m. Tue. "
Ar. Jasper Park, Alta (P.T.).....	7:40 p.m.	Tue.	"	Ar. Duluth, Minn.	8:05 p.m. Tue. "
				Lv. Duluth, Minn.	8:20 p.m. Tue. C. & N. W. Ry.
				Ar. Chicago, Ill.	9:45 a.m. Wed. "

Cost of Complete "A" Circle Tour

FROM CHICAGO, RETURNING TO CHICAGO

	With Rail Ticket	Without Rail Ticket
Two persons occupying a lower berth, each.....	\$381.91	\$291.61
One person occupying a lower berth.....	405.91	315.61
One person occupying an upper berth.....	396.30	306.00
Two persons occupying a compartment, each.....	425.66	335.36
Two persons occupying a drawing room, each.....	442.90	352.60
Three persons occupying a drawing room, each.....	414.57	324.27

Additional drawing room and compartment rates, also rates for incomplete tour on application.

The above rates shown with and without railroad fare of \$90.30 from Chicago, are based on double rooms with bath at all hotels. Single room with bath will be assigned any passenger booking alone at additional cost of \$10.00.



ALONG THE SHORES OF GRAND LAKE, COLORADO

COLORADO

"Where the West Is Nearest"

Suppose you simply can't get away this summer for an extended trip West—the best you can possibly do is to "break away" for a week or so. No need to forego the supreme pleasure of just the kind of vacation you need and want.

There's a cool, green land of streams and waterfalls . . . of pine forests and quiet valleys . . . of snow-capped peaks that reach toward the blue of a western sky—and it's only overnight from most of the United States. *It's Colorado!*

Run out to Colorado. Here the West is nearest. Here there is a bountiful supply of all the requisites for a perfect vacation. Here, in the heart of the Rockies, there is peace and quiet—over all the serene majesty of those mighty monarchs that Nature has so generously provided.

And here, for those who wish it, are outdoor sports and pleasure in endless variety—mountain climbing, fishing, golf, bathing, camping, hiking, horseback riding. Imagine the thrill of your favorite pastime in a region so superbly picturesque that pen description will scarcely do it justice.

Colorado's mountains are criss-crossed by endless miles of highways, foot trails and saddle trails. You can relax—you can quiet your overwrought nerves—and you can come back feeling "fit as a fiddle," even though your time is limited.

Go by train . . . save time . . . start your vacation where the scenery begins. Take the Chicago & North Western-Union Pacific and start your vacation when you board one of its fine trains to Colorado, the most famous of which is the Columbine, named in honor of Colorado's state flower. Incomparable vacation days in the romantic Rockies for less than \$100.00. Let us show you how easily it can be done—let us plan for you.

GENERAL INFORMATION

"Overland Route" Circle Tours offer you "The Best of the West," at the least possible cost and are planned with every care for your comfort, convenience and pleasure. An experienced escort accompanies the party at all times and relieves you of every travel detail. Go via the "Overland Route" and make the most of your vacation this summer.

Tour Costs Are All-Inclusive

The all-expense cost of all "Overland Route" Circle Tours includes every necessary item of expense incident to the trip. There are no extras, except individual tips, which are considered purely personal.

Rates for Children

Children under twelve years of age are entitled to half fare railroad transportation. Various other deductions are made in tour privileges and rates furnished on request.

Women Traveling Alone

If a woman is hesitant about traveling alone, our escorted tours offer the opportunity to bridge this difficulty. Our escort will introduce her to other members of the party and insure her a pleasant trip without vexation or annoyance. Hundreds of women, as individuals, have thus taken advantage of our escorted tours.

Dining Car Service

In our spacious dining cars excellent meals tastily prepared and served with a smile, comparable with the best metropolitan hotel standards, add pleasure to your trip. You are at liberty to select whatever you wish and simply sign the guest check.

Hotels and Lodges

In Yellowstone you have the choice of two types of accommodations, the rustic lodges or the hotels. The rates via the hotels are based on minimum accommodations. Rooms with bath are usually available at an additional charge of \$2.00 to \$4.50 per day per person.

In the Utah-Arizona Parks the popular rustic cabins are used and rates are based on minimum accommodations. De Luxe Cabins with bath are available, if arranged in advance, at an additional charge of \$2.25 to \$6.00 per day per person.

In Rocky Mountain National Park rooms with bath are available at an additional charge of \$1.00 to \$2.00 per day per person.

When passengers request reservation of rooms with bath in National Parks shown above, this department will gladly ask for such accommodations, however, the additional charge involved must be paid direct by passenger to each hotel or lodge.

In all National Parks, Hotels and Lodges are under the jurisdiction of the National Park Service, Department of the Interior, who require that all visitors to the Parks must be accommodated. Consequently, single rooms are not always available.

Rates quoted herein on Pacific Northwest "PNW," California "C," and Alaska "A" Tours, are based on double rooms with bath at all hotels, also at Antlers Hotel, Colorado Springs on Zion-Bryce Canyon-Grand Canyon-Royal Gorge "ZRG," and on Yellowstone-Royal Gorge "YRG" Tours. Single rooms at slightly higher rates will be assigned any passenger traveling alone on these five tours. See rate quotations for this additional charge.

Personal Service

Representatives of the Department of Tours, The Chicago & North Western Railway and the Union Pacific System, each a travel expert, are prepared to assist you in every way—supplying detailed information, making reservations and booking passengers for the tours. If you desire, a representative will call to assist with your travel plans.

Service by Correspondence

With an intelligent understanding of the problems confronting persons wishing to secure the greatest benefits of a Western vacation trip, the Department of Tours is prepared to tender a real service to those making inquiry by mail. You may feel free to write fully and ask any questions whatsoever in connection with any phase of western travel.

Wearing Apparel

Warm summer days suggest summer lightweight clothing, yet the cool, invigorating nights in the mountains make medium weight wraps necessary—top coats, sweaters, weatherproof outer garments. Outing clothes; knickers, jackets, stout shoes or boots are a comfort. A pair of colored glasses will be invaluable.

Baggage

Trunks are unnecessary. A suit case or bag will hold sufficient clothing for the entire trip and extra baggage will be a burden.

In the National Parks, the free allowance of baggage carried by the automobiles is one piece weighing twenty-five pounds. You may carry a small overnight bag with you, in addition to this. The Department of Tours assumes no responsibility for baggage or personal effects, but in the event of damage, delay or loss, will do all in its reasonable power to lessen the hardship incurred. Our escort will furnish you, upon departure from Chicago, special baggage tags, bearing your name and address. These tags should be attached to all baggage.

Mail and Telegrams

Mail and telegrams should be addressed to the various hotels shown in the itinerary. Specify, "Member of C. & N. W. Un. Pac. Overland Route Tour "Y-1," "Z-1," or whatever the particular designating letter and number may be. The Post Office Address of all hotels and lodges in Yellowstone Park, is Yellowstone National Park, Wyoming. In the Utah-Arizona Parks, addresses are as follows: El Escalante Hotel, Cedar City, Utah; Zion Park Lodge, Zion National Park P. O., Utah; Grand Canyon Lodge, Kaibab Forest, P. O., Arizona; Bryce Canyon Lodge, Bryce Canyon P. O., Utah.

How to Join Our Tours

Persons desiring to join an "Overland Route" Circle Tour should send their names to be registered as early as possible. Simply fill in the reservation blank on inside of back cover, being particular to supply all the information requested thereon. Reservations will then be made. Remittance should be made not later than ten days before departure of tour, but when this is inconvenient, we will upon request, hold reservations longer. Persons prevented from going may secure refund in full, provided reservations be cancelled before 1:00 P.M. on date of departure.

Deposit Covering Reservations

Except in the case of Alaska Tours, no deposit is required. A deposit of \$25.00 per passenger is required by the steamship line on the Alaska Tours and this deposit should accompany request for space.

Purchase Railroad Ticket at Your Home Station

Passengers coming from points other than Chicago may join our tours at Chicago or at any regular stopping point en route. To obtain full benefit of the low round-trip summer tourist (season) railroad fare, (or of special 30-day low fare in effect from points east and southeast of Chicago) railroad tickets should be purchased from home station, reading via the route of the tour, as shown on page 46.

Note

Rates and train schedules quoted herein are subject to such change as tariff or operating requirements, which cannot be foreseen at time of issuance of this publication, may later demand.

Ticket Agents Please Note

Reservations

In making reservation for your patrons on one of our tours, you can handle direct with any representative of the Department of Tours, the Chicago & North Western Railway or the Union Pacific System, listed herein. In requesting reservation please give name in full, street and city address of each passenger, and class of Pullman space desired. If entire trip will be made with party, just specify "Entire tour" otherwise specify date and place patron will join and leave party. For passengers visiting Yellowstone National Park specify lodge or hotel accommodations.

Remittances Covering Tour Privileges

Remittance covering tour privileges, shown under column headed "Without Rail Ticket" for the various tours may be made by prepaid or exchange order drawn on Chicago and North Western Railway, Chicago, forwarding same to office through whom reservation is secured, at least ten days prior to departure of tour

Routing of Tickets

"Y" CIRCLE TOUR:—Destination West Yellowstone, Montana. Routing—any direct line to Chicago, thence C. & N. W. Ry. to Council Bluffs; Un. Pac. Sys. to West Yellowstone. Returning—Un. Pac. Sys. to Council Bluffs; C. & N. W. Ry. to Chicago, and any direct line to home station.

"YRG" CIRCLE TOURS:—Destination West Yellowstone, Montana. Routing—any direct line to Chicago, thence C. & N. W. Ry. to Council Bluffs; Un. Pac. Sys. to West Yellowstone. Returning—Un. Pac. Sys. to Ogden; D. & R. G. W. Ry. to Denver; Un. Pac. Sys. to Council Bluffs; C. & N. W. Ry. to Chicago, and any direct line to home station.

"YR" CIRCLE TOUR:—Destination West Yellowstone, Montana. Routing—any direct line to Chicago, thence C. & N. W. Ry. to Council Bluffs; Un. Pac. Sys. to West Yellowstone. Returning—Un. Pac. Sys. to Council Bluffs; C. & N. W. Ry. to Chicago, and any direct line to home station.

Side trip coupons reading via D. & R. G. W. Ry., from Denver to Colorado Springs and return should be included by issuing agent in all tickets of passengers availing themselves of Colorado Springs extension.

"YZ" CIRCLE TOUR:—Destination West Yellowstone, Montana—Cedar City, Utah. Routing—any direct line to Chicago, thence C. & N. W. Ry. to Council Bluffs; Un. Pac. Sys. to West Yellowstone; Un. Pac. Sys. to Cedar City. Returning—Un. Pac. Sys. to Council Bluffs; C. & N. W. Ry. to Chicago, thence any direct line to home station.

"Z" CIRCLE TOUR:—Destination Cedar City, Utah. Routing—any direct line to Chicago; thence C. & N. W. Ry. to Council Bluffs; Un. Pac.

Sys. to Cedar City. Returning—Un. Pac. Sys. to Council Bluffs; C. & N. W. Ry. to Chicago, thence any direct line to home station.

"ZRG" CIRCLE TOUR:—Destination Cedar City, Utah. Routing—any direct line to Chicago, thence C. & N. W. Ry. to Council Bluffs; Un. Pac. Sys. to Cedar City. Returning—Un. Pac. Sys. to Salt Lake City; D. & R. G. W. Ry. to Denver; Un. Pac. Sys. to Council Bluffs; C. & N. W. Ry. to Chicago, and any direct line to home station.

"PNW" CIRCLE TOUR:—Destination Seattle, Wash. Routing—any direct line to Chicago, thence C. & N. W. Ry. to Council Bluffs; Un. Pac. Sys. to Seattle. Returning—Can. Pac. SS. Co. to Vancouver; Can. Nat'l Ry. to Duluth; C. & N. W. Ry. to Chicago, thence any direct line to home station.

"C" CIRCLE TOUR:—Destination San Francisco, Calif. Routing—any direct line to Chicago, thence C. & N. W. Ry. to Council Bluffs; Un. Pac. Sys. to Los Angeles; Sou. Pac. Lines to San Francisco. Returning—Sou. Pac. Lines to Ogden; Un. Pac. Sys. to Council Bluffs; C. & N. W. Ry. to Chicago, thence any direct line to home station.

"A" CIRCLE TOUR:—Destination Seattle, Wash. Routing—any direct line to Chicago, thence C. & N. W. Ry. to Council Bluffs; Un. Pac. Sys. to Seattle. Returning—Can. Pac. SS. Co. to Vancouver; Can. Nat'l Ry. to Duluth; C. & N. W. Ry. to Chicago, thence any direct line to home station.

Do not issue coupons covering tours of Yellowstone, Zion, Bryce, Grand Canyon, Rocky Mountain, Rainier or Yosemite National Parks; also, coupons covering side-trip Merced to Yosemite (El Portal), as these items are all included in tour privileges of the all-expense tour rate.

DEPARTMENT OF TOURS

of the

CHICAGO & NORTH WESTERN RY. — UNION PACIFIC SYSTEM

No other western railroad has employed for thirty-two years a staff of travel experts who spend their entire time in arranging attractive vacation tours that provide—

"THE BEST OF EVERYTHING"
ADDRESS COMMUNICATIONS TO

J. L. BURGAR, Manager
148 South Clark Street, Chicago, Ill.

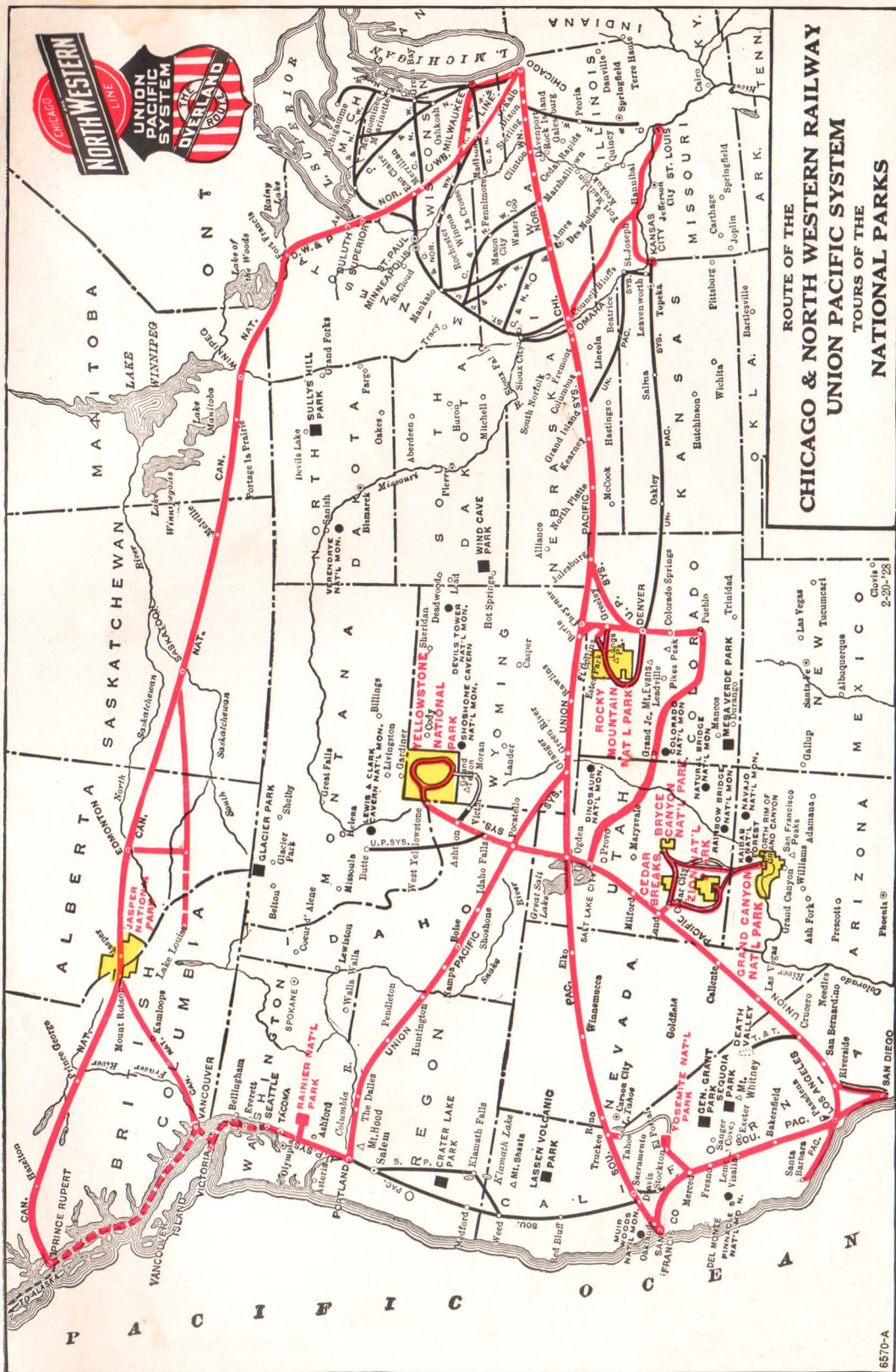
Department of Tours Representatives

Chicago, Illinois—148 S. Clark Street—Tel. Dearborn 2121

C. E. Burgess, Chicago Representative
C. E. Frain, Traveling Agent
I. D. Kessler, Traveling Agent

J. C. Judge, City Passenger Agent
G. V. Weiss, City Passenger Agent
H. L. Means, City Passenger Agent

BUFFALO, N. Y.	202 Ellicott Square Bldg.	E. D. Poulson, Traveling Agent
CLEVELAND, OHIO	1006 Terminal Tower Bldg.	C. M. Brown, Traveling Agent
DETROIT, MICH.	619 Transportation Bldg.	H. B. Buchholz, Traveling Agent
INDIANAPOLIS, IND.	308 Merchants Bank Bldg.	J. L. Bostick, Traveling Agent
MILWAUKEE, WIS.	231 East Wisconsin Ave.	Jos. Muller, Traveling Agent
PHILADELPHIA, PA.	906 or 1002 Girard Trust Co. Bldg.	M. A. Light, Traveling Agent
PITTSBURGH, PA.	212 Oliver Bldg.	A. J. Keating, Traveling Agent



**ROUTE OF THE
CHICAGO & NORTH WESTERN RAILWAY
UNION PACIFIC SYSTEM
TOURS OF THE
NATIONAL PARKS**

Ticket and Information Offices

Chicago & North Western Line

ATLANTA, GA.—317 Healey Bldg.
J. H. Schultz, General Agent.

BOSTON, MASS.—310 Old South Bldg.
F. A. Haas, General Agent.

BUFFALO, N. Y.—202 Ellicott Sq.
J. P. Fox, General Agent.
C. B. Williams, Traveling Agent.
A. R. Carlson, Traveling Agent.
J. F. Swartout, City Agent.

CHICAGO, ILL.—148 South Clark St.
H. G. Van Winkle, Gen. Agent Pass. Dept.
N. M. Kean, City Agent.
E. E. Bogardus, City Agent.
W. W. Pontious, City Agent.
W. Evans, City Agent.
J. R. Hancock, City Agent.

CINCINNATI, O.—202 Dixie Terminal Bldg.
G. L. Helmstadter, General Agent.
A. M. Linz, Traveling Agent.
J. T. Hall, Traveling Agent.
C. P. Humphreys, Traveling Agent.

CLEVELAND, O.—1106 Terminal Tower Bldg.
H. E. Saumby, General Agent.
S. L. Howells, Traveling Agent.
R. C. Roberts, Traveling Agent.
L. J. Jensen, City Agent.
S. A. Keathley, City Agent.

DES MOINES, IA.—Chamberlain Hotel.
W. F. Winkrantz, General Agent.
C. A. Hagberg, City Agent.

DETROIT, MICH.—619 Transportation Bldg.
R. H. Miller, General Agent.
F. J. Herhusky, Traveling Agent.
W. F. Schlicht, Traveling Agent.
W. W. Creighton, Traveling Agent.
G. A. Culbertson, Traveling Agent.
H. F. Williams, City Agent.
L. J. Bozman, City Agent.

DULUTH, MINN.—424 West Superior St.
J. D. Mahon, General Agent.

GREEN BAY, WIS.
T. A. Carney, D. F. & P. A.

INDIANAPOLIS, IND.—308 Merchants Bank Bldg.
V. A. Hampton, General Agent.
R. L. Dickson, Traveling Agent.
G. S. Vosburgh, Traveling Agent.
S. M. Smith, City Agent.

MADISON, WIS.
J. W. Vilas, D. F. & P. A.

MILWAUKEE, WIS.—231 E. Wisconsin Ave.
E. P. Rueter, Gen. Agent Pass. Dept.
C. W. Carlsen, City Agent.
F. E. Reuter, City Agent.

MINNEAPOLIS, MINN.—701 Marquette Ave.
F. A. Brown, Gen. Pass. Agent.

NEW ORLEANS, LA.—930 Hibernia Bank Bldg.
L. A. Uvaas, General Agent.
O. L. Thompson, Traveling Agent.

NEW YORK, N. Y.—500 Fifth Ave.
F. G. Fitz-Patrick, General Agent.

PEORIA, ILL.—213 Jefferson Bldg.
F. B. Martin, D. F. & P. A.
H. Eklund, Traveling Agent.
W. J. Kessler, City Agent.

PHILADELPHIA, PA.—1002 Girard Trust Co. Bldg.
C. N. Hale, General Agent.
T. J. Coen, Traveling Agent.
C. A. Miller, Traveling Agent.
J. G. Thomas, Traveling Agent.
C. E. Anderson, City Agent.

PITTSBURGH, PA.—212 Oliver Bldg.
A. O. Olson, General Agent.
E. W. Fiala, Traveling Agent.
R. W. Phelps, Traveling Agent.
E. A. Kempfer, City Agent.

ST. LOUIS, MO.—401 Boatmen's Bank Bldg.
H. L. Hammill, General Agent.
H. A. Hancock, Traveling Agent.
E. C. Crow, Traveling Agent.
D. C. Mead, City Agent.

ST. PAUL, MINN.—81 East 5th Street.
G. H. Feyder, Ass't Gen. Pass. Agent.

SIoux CITY, IA.—522 Nebraska St.
L. J. Nickelsen, General Agent.

<p>C. A. CAIRNS Passenger Traffic Manager Chicago, Ill.</p> <p>R. THOMSON Ass't Passenger Traffic Manager Chicago, Ill.</p> <p>E. L. PARDEE Passenger Traffic Manager St. Paul, Minn.</p>	<p>A. R. GOULD Ass't Passenger Traffic Manager Chicago, Ill.</p> <p>M. R. LEAHY General Passenger Agent Chicago, Ill.</p> <p>W. L. MANSFIELD General Passenger Agent St. Paul, Minn.</p>
---	--

Chicago & North Western Line

Union Pacific System

ATLANTA, GA.—1232 Healey Bldg.
W. C. Elgin, General Agent.

BOSTON, MASS.—207 Old South Bldg.
Willard Massey, General Agent.

CHICAGO, ILL.—6 South La Salle St.
G. R. Lemmer, Gen. Agent Pass. Dept.
William Warner, City Passenger Agent.
John C. Pollock, City Passenger Agent.
E. E. Robertson, Traveling Passenger Agent.
H. G. Larimer, Traveling Passenger Agent.
W. W. Witte, City Ticket Agent.
C. V. Wedell, Passenger Agent.

CINCINNATI, O.—705 Dixie Terminal Bldg.
J. Stanley Orr, Gen. Agent Pass. Dept.
Wm. Hetherington, Traveling Passenger Agent.
Thomas Clift, Traveling Passenger Agent.
W. A. Looney, City Passenger Agent.

CLEVELAND, O.—1006 Terminal Tower Bldg.
W. H. Benham, General Agent.
R. E. Burt, Traveling Passenger Agent.
Edwin H. Allen, Trav. Frt. and Passenger Agent.
A. G. Herbster, City Passenger Agent.

DES MOINES, IA.—407 Equitable Bldg.
Fred P. Stafford, General Agent.
V. C. Kuhne, Traveling Passenger Agent.
R. L. Henry, Trav. Frt. and Passenger Agent.

DETROIT, MICH.—508 Transportation Bldg.
A. R. Malcolm, General Agent.
L. G. Meder, City Passenger Agent.
J. G. Howey, Trav. Frt. and Passenger Agent.
W. W. Hott, Trav. Frt. & Passenger Agent.
A. J. Eckerle, Passenger Agent.

KANSAS CITY, MO.—805 Walnut Street.
Seth C. Rhodes, Gen. Agent Pass. Dept.
O. D. Crofut, Traveling Passenger Agent.
C. F. Hallsman, Traveling Passenger Agent.
E. M. Mattes, City Passenger Agent.

MILWAUKEE, WIS.—814 Warner Bldg.
K. T. Mindemann, General Agent.
G. J. Buckingham, Traveling Passenger Agent.
C. C. Crouse, City Passenger Agent.

MINNEAPOLIS, MINN.—890 Northwestern Bank Bldg.
E. H. Hawley, General Agent.
A. J. Wintersteen, City Passenger Agent.

NEW ORLEANS, LA.—1001 New Orleans Bank Bldg.
G. J. Garmon, General Agent.

NEW YORK, N. Y.—City Passenger Office, 475 Fifth Av.
H. A. Lawrence, Gen. Agent Pass. Dept.
C. J. Smith, Traveling Passenger Agent.
J. T. Caulfield, Traveling Passenger Agent.
H. L. Gardner, City Passenger Agent.
G. I. Giles, City Passenger Agent.
J. M. Quade, Jr., City Passenger Agent.
A. R. Wilkins, Passenger Agent.

OMAHA, NEBR.—1523 Farnam St.
A. G. Bloom, Gen. Agent Pass. Dept.
A. K. Curtis, City Passenger Agent.
U. P. Headquarters, 1416 Dodge St.
F. E. Watkins, Traveling Passenger Agent.
E. C. Mallon, Traveling Passenger Agent.

PHILADELPHIA, PA.—906 Girard Trust Co. Bldg.
H. L. Lauby, General Agent.
Gordon G. Noble, Trav. Frt. & Passenger Agent.
J. M. T. Fritz, Trav. Frt. & Passenger Agent.
J. L. Brechin, Trav. Frt. & Passenger Agent.
L. R. Tibke, City Passenger Agent.

PITTSBURGH, PA.—216 Oliver Bldg.
John D. Carter, General Agent.
Edward Emery, Dist. Passenger Agent.
G. O. Hassenfritz, Trav. Frt. & Passenger Agent.
Gaylord F. Allen, Trav. Frt. & Passenger Agent.

ST. LOUIS, MO.—203 Carleton Bldg.
J. L. Carney, General Agent.
J. M. Rebmann, Traveling Passenger Agent.
J. J. McCarthy, City Passenger Agent.

TORONTO, ONT.—69 Yonge St.
Geo. W. Vaux, General Agent.

<p>W. S. BASINGER Passenger Traffic Mgr. Omaha, Neb.</p> <p>J. P. CUMMINS General Passenger Agent Omaha, Neb.</p> <p>W. K. CUNDIFF General Passenger Agent Portland, Ore.</p>	<p>C. J. COLLINS Ass't Passenger Traffic Mgr. Omaha, Neb.</p> <p>D. S. SPENCER General Passenger Agent Salt Lake City, Utah</p> <p>G. R. BIERMAN General Passenger Agent Los Angeles, Calif.</p>
---	--

Union Pacific System

APPLICATION FOR RESERVATION

DEPARTMENT OF TOURS

Chicago & North Western Ry.—Union Pacific System

..Chicago & North Western Ry..

J. P. FOX, Gen'l Agent

202 Ellicott Square Bldg.

BUFFALO, N. Y.

City

Date

Dear Sir:

Parties listed below wish to join Tour indicated. Leaving Chicago.....

Date

Y	YRG	YR	YZ	Z	ZRG	PNW	C	A
---	-----	----	----	---	-----	-----	---	---

(Insert tour number)

NAME

STREET ADDRESS

CITY

STATE

Names and ages of any minors listed above.....

Will require Pullman space as indicated: (Show number of berths desired)

☐ Lower berth ☐ Upper berth ☐ Section ☐ Section (occupied by one person)

☐ Compartment ☐ Drawing room

In Yellowstone Park ☐ Hotels

☐ Lodges

At Hotels En Route

☐ Single Room

☐ Double Room

In Los Angeles, Calif.

☐ Alexandria Hotel

☐ Biltmore Hotel

☐ Will make Estes Park Extension "YRG" Tour. ☐ Will make Colorado Springs Extension "YR" Tour.

Single Room at additional cost will be assigned to any person traveling alone except in National Parks where Government regulations require doubling.

When two or more in party state how members wish to be assigned to Pullman and hotel or lodge accommodations

Will make complete tour.....

(Yes or No. If "No," State After Remarks Your Plans)

Remarks:.....

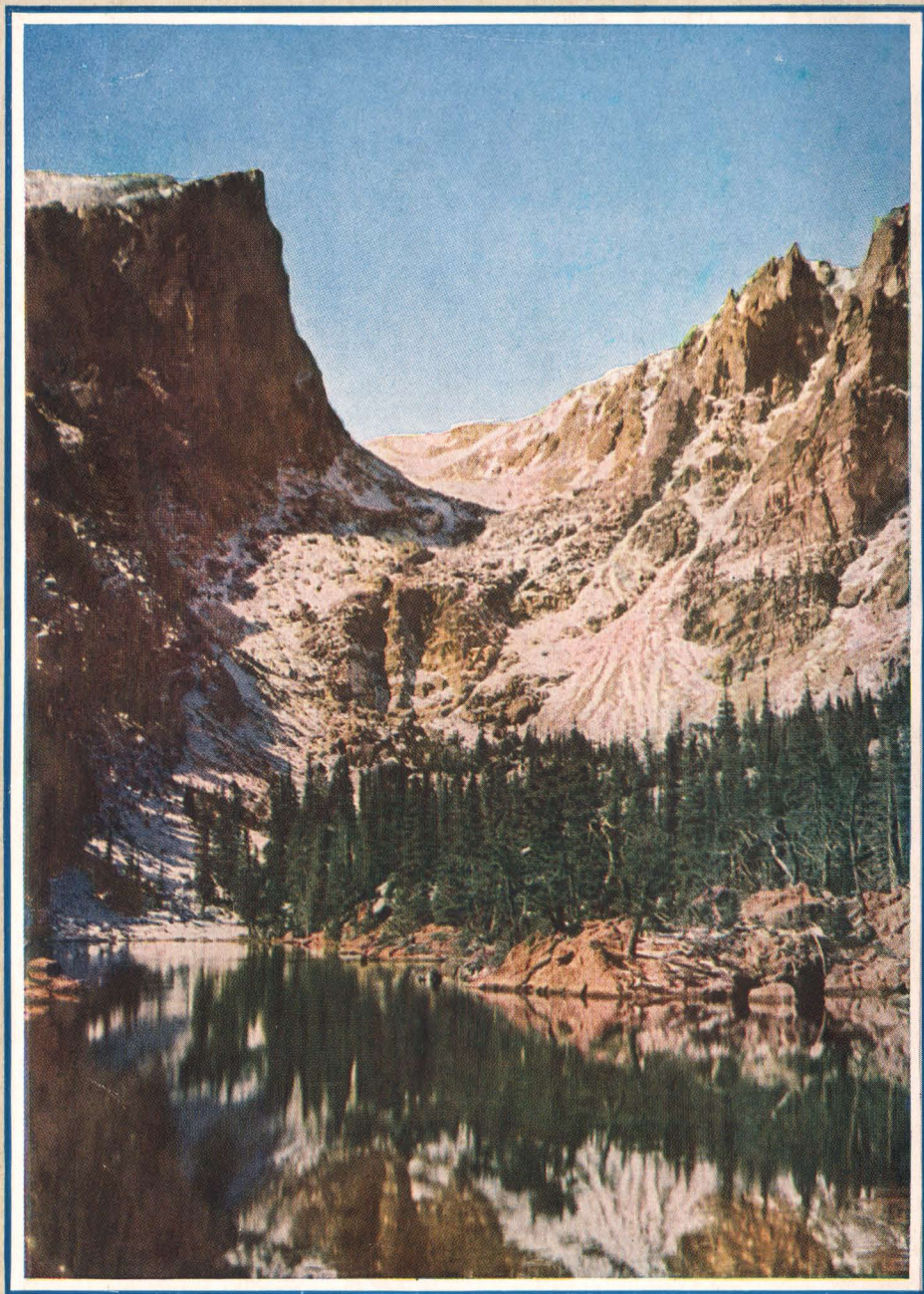
Name.....

Address.....City.....State.....

Detach and mail to any representative listed herein.

SUMMER TOURS

UNDER ESCORT



SEASON 1932



DEPARTMENT OF TOURS
CHICAGO & NORTHWESTERN RY.
UNION PACIFIC SYSTEM