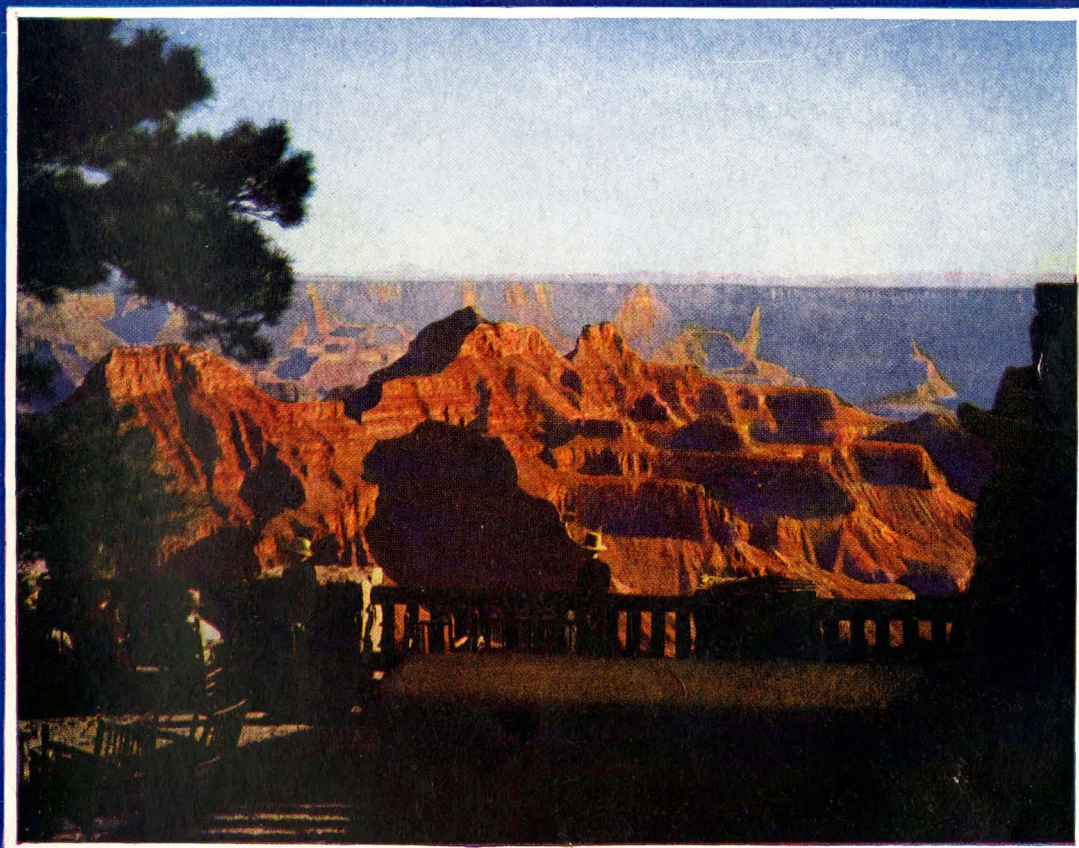


SUMMER TOURS

Under Escort



SEASON 1930



DEPARTMENT OF TOURS

CHICAGO & NORTH WESTERN RY.

UNION PACIFIC SYSTEM

SUMMER TOURS

UNDER ESCORT

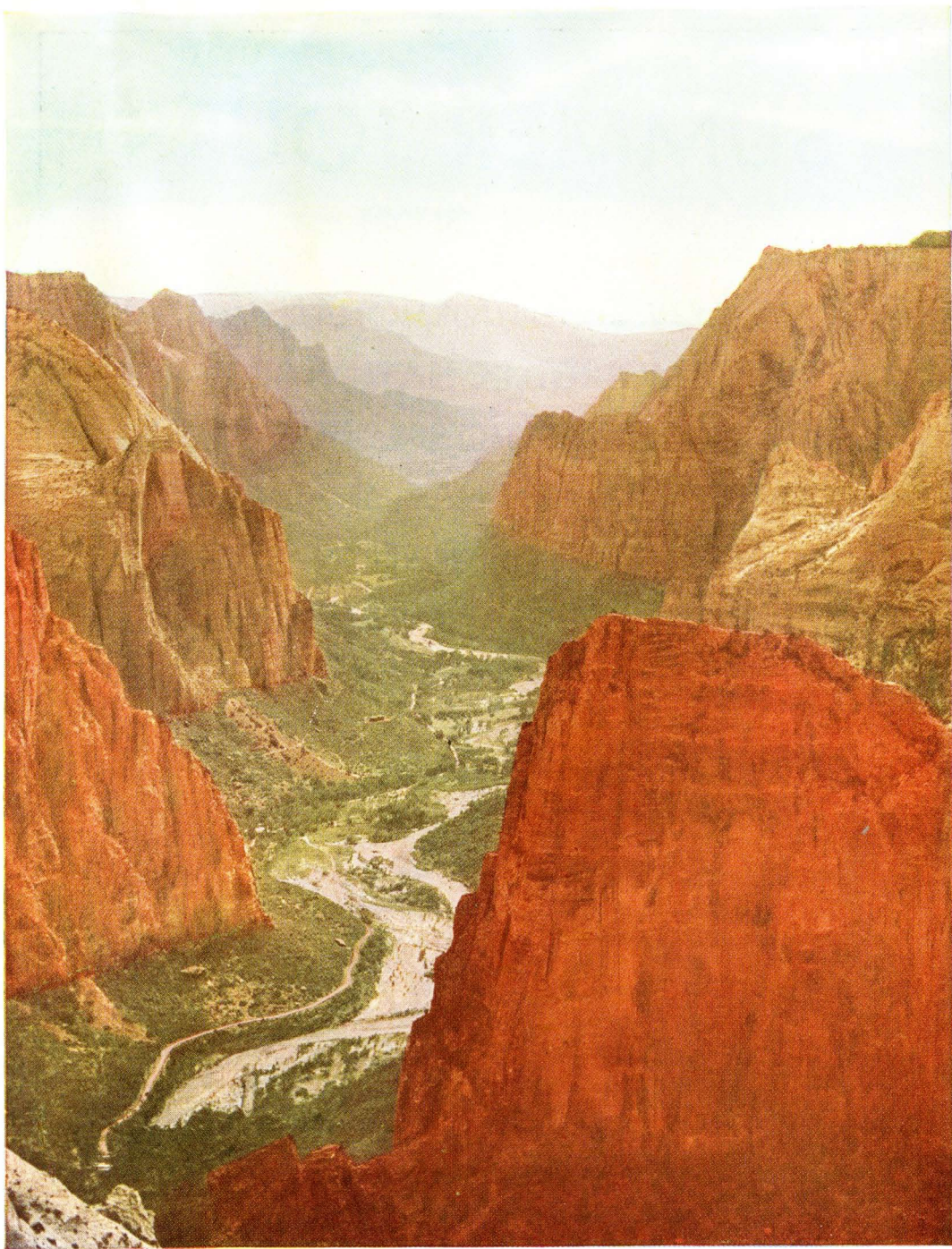
YELLOWSTONE NATIONAL PARK
ROCKY MOUNTAIN NATIONAL PARK
ZION NATIONAL PARK
BRYCE CANYON NATIONAL PARK
GRAND CANYON NATIONAL PARK
YOSEMITE NATIONAL PARK

CALIFORNIA / / COLORADO



SEASON 1930

COPYRIGHT 1930 BY
J. L. BURGAR, MANAGER
DEPARTMENT OF TOURS
CHICAGO & NORTH WESTERN RY.
UNION PACIFIC SYSTEM
CHICAGO



*Natural color photograph
by Frank G. Fulton*

Zion Canyon from the East Rim is "immense"



"...he is a better citizen with a keener appreciation of the privilege
of living who has toured the National Parks."



—STEPHEN T. MATHER,

Former Director of National Park Service, Department of the Interior

CONTENTS

Foreword.....	5 to 7
Yellowstone—Salt Lake City “YN” Circle Tours.....	8 to 11
Yellowstone—Salt Lake City—Royal Gorge—Colorado Springs—Denver “YRG” Circle Tours.....	12 to 14
Yellowstone—Salt Lake City—Ogden—Rocky Mountain National Parks—Denver “YR” Circle Tours.....	15 to 17
Yellowstone—Salt Lake City—Ogden—Rocky Mountain National Parks—Denver—Colorado Springs “Y” Circle Tours.....	18 to 21
Zion—Grand Canyon—Bryce Canyon National Parks— Salt Lake City—Royal Gorge—Colorado Springs— Denver “Z” Circle Tours.....	25 to 29
Yellowstone—Zion—Bryce—Grand Canyon National Parks— Salt Lake City “YZ” Circle Tours.....	30 to 31
California—Old Mexico—Yosemite National Park— Lake Tahoe “C” Circle Tours.....	35 to 40
Hawaii.....	41
General Information.....	43 to 45
Reservation Blank.....	47

Illustrations on front cover —
 Grand Canyon from Union Pacific Lodge
 Grand Canyon National Park

Illustrations on back cover —
 Old Faithful Geyser, Yellowstone National Park
 Long's Peak, Rocky Mountain National Park



Old Faithful Geyser—Yellowstone National Park

FOREWORD

AS time is measured the wonderlands of the West are still new to us. There are no deep worn trails that have felt the tread of parading centuries. Here is a land of comparatively recent discovery and upon seeing it for the first time you are justified in feeling that you are a pioneer viewing new vistas of beauty that the gods have scarcely vouchsafed the picturing of by either pen or brush of man. The saga of the West has not been sung and its marvel still baffles the genius of the artist.

The tourist through the West enjoys a show of nature so bewildering in the variety of its scenes as to surpass imagination; great mountains cast giant shadows over fragile fairy lands; torrents plunge from towering precipice to the peace of dreaming valleys. *Every* mood of nature awaits you in the playgrounds of the West.

Colorado, where the West is nearest, is a fitting prelude to the array of beauty that awaits you in Yellowstone, Grand Canyon, Zion, Bryce Canyon and all the famous National Parks along the way of the Chicago & North Western Railway-Union Pacific System. Here, on top of the world, stretches an incomparable panorama of mountains, forests, valleys and streams that makes the world of man seem remote and far-away. The problems of life seem trivial, they are forgotten; lost in this land of *mighty* things.

Yellowstone National Park is nature in convulsions—where the turmoil of creation still expresses itself in belching geysers of steam, boiling water and colored mud; where pools of colored water dance and seethe in magic cauldrons; where the grotesque holds sway in frantic carnival. To see eerie, awesome Yellowstone is more than a trip to an earthly place, it is a real visit to childhood's fancied land of gnomes.

In Grand Canyon, nature carved her eternal masterpiece with tools of wind and water. Grand Canyon is an epic of erosion. In this region of superlative delights it is the pinnacle. Thirteen miles from rim to rim and over two hundred miles in length, it presents from the Union Pacific Grand Canyon Lodge on the towering North Rim an endless aspect of terraces, spires, gorges—scarlet and gold in the sunlight—tempered to purple and liquid silver in the shadows.

Zion National Park is inexpressibly fascinating with its age-hewn gorge twisting a yawning way through towering temples, colossal buttes and mighty walls tinted by a brush celestial in ever-changing shades of deepest red, pink and white. The names by which a few of the most magnificent spectacles are known, convey perhaps, a more vivid picture of them than a brief description could hope to do. There are the East and West Temples, the Three Patriarchs, the Mountain of Mystery, Angels' Landing, the Great White Throne and others of equal grandeur, unnamed and unscaled.

The vast natural amphitheatre that is Bryce Canyon National Park displays another mood of nature most amazing and enchanting. To stand on the rim of this canyon and look down is to gaze upon all the fairy cities of fabledom painted in every color, and blended shades of color, known to man. There are fragile towers and minarets, castle turrets of daintiest design—of most marvelous molding—gleaming and flashing tints as delicate as that on the wing of a tropical butterfly. There are, in contrast, shapes that appear like medieval fortresses, glowing in a smoulder of yellow and crimson flame. Again, you view lace and filigree work in stone—colored with the white of frost and the pink of coral.



*Natural color photograph
by Frank G. Fulton*

Grand Canyon's Colorado River can be seen from Cape Royal

When you first see Bryce Canyon you cannot convince yourself that such exquisiteness can be real—and should you visit it a dozen times you still will feel the same! The experience is unforgettable!

Cedar Breaks is a series of vast chasms within whose yawning labyrinths countless thousands of grotesque and magnificent architectural forms are found—splashed with all the colors of the spectrum. The few trails into the deep-slashed basins are faint and obscure, yet their descent with a guide offers unsuspected marvels. It is from the basins only of Cedar Breaks' vast chasms that one can partly comprehend its sheer immensity, dazzling variety and rare sublimity.

Robin Hood would have chosen Kaibab National Forest as his dream of paradise. Covering a huge plateau Kaibab National Forest consists of five hundred square miles of virgin pine, fir and spruce, intermixed with charming aspen copses. Scattered throughout its great extent are sylvan meadows of irresistible witchery, where graceful deer browse in undisturbed content. The forest floor is remarkably clear of underbrush and fallen timber. Although untended by man it has the constant appearance of being freshly raked. No reference to Kaibab National Forest would be complete without mention of the white-tail squirrel, the most beautiful in the Western hemisphere. These lovely little creatures, live only in this great forest and they, among other wild life abundant here, afford much interest to the tourist.

Beyond the Rockies—which, with their lofty forest shawled, hoary crowned heads, are alone worth your trip—the sunny lands of far-famed California beckon to you. Here indeed is a golden garden of the god's siesta. Because its mountains lie so close to the sea, California offers the visitor everything he wants in the way of climate. Practically every outdoor sport is possible at all seasons of the year. One may pick a bouquet of tropical flowers in the lowlands and inhale their fresh fragrance as he toboggans in the snow of the nearby mountains.

Gazing over the peaceful seas one is tempted to go to Hawaii—those islands of flower flecked witchery—where listless wavelets lap on dreamy shores. . . . “There is sweet music here that softer falls than petals from blown roses on the grass.”

Northward from California the glories of the Great Northwest urge the tourist onward to this country of rugged mountains, exquisite lakes and thunderous waterfalls tumbling from dazzling heights in silver threads—to froth maddened cataracts below. The Pacific Northwest, tempered to eternal summer by the benign Japan current that leaves a warm kiss on its coast is a vacation land eminently qualified to satisfy all desires.

To live life's routine without seeing these portals of paradise is doing yourself a grave injustice. Many of them—such as the great National Parks have been set aside for your enjoyment by the United States Government. They are your playgrounds—the grandest, most beautiful, most *wonderful* playgrounds in this continent—if not in all the world.

See them you must—but to see as much of them as possible and to absorb the maximum of their wonders you should see them leisurely under skillful experienced direction. To visit them haphazardly is tedious, disappointing and expensive while to see them, as you should, under proper guidance is exhilarating, inspiring, and at a cost well suited to your purse.

The escorted all-expense “Overland Route” Circle tours conducted by the Chicago & North Western Ry.-Union Pacific System offer by far the most ideal way to enjoy these marvelous regions of the West. Supreme comfort, possible only through a large, reliable organization such as the Chicago & North Western Ry.-Union Pacific System is assured you. Our “all-expense” escorted tours provide a purely recreational trip free from all travel responsibilities, and, you know exactly what it will cost before you start your trip.

Best of all you start your sight-seeing tour refreshed and eager. The luxurious trains upon which you travel relax you and free your mind of fret, fatigue and worry. Everywhere on your journey the same luxurious comfort prevails.

Another important point: We have chosen the fast and direct rail routes in order to avoid unnecessary train travel. Widely traveled people know that the best scenery is not immediately adjacent to transcontinental railways, but lies in the great reservations which can be reached only by highway and trail. Our tours are not only to the mountains, *but into* the mountains.

No matter which of the many tours arranged by the Chicago & North Western Ry.-Union Pacific System you may select or how many you may combine in one tour, skilled travel experts “who know the country like a book” direct the tour in its entirety. You see everything there is to see. **NOTHING IS OVERLOOKED.**

Read this book over carefully and decide which tour suits best your leisure and your purse. If time permits, any of these tours may be combined to suit the vacation plans of anyone.



The Great Falls of the Yellowstone from Red Rock



TEN DAY "YN" CIRCLE TOUR

Yellowstone National Park and Salt Lake City

The longing to visit Yellowstone begins in early childhood and intensifies as the years roll by. People come from all over the world to see Yellowstone and yet many who are comparatively close to this spectacular region of beauty and scenic surprises have not availed themselves of the opportunity of enjoying "the trip of a lifetime" at a very low cost.

It is for those whose time or purse is limited that the ten day "YN" Circle Tour is featured and at a cost surprisingly low. You follow the direct trans-continental line of the "Overland Route," "Road of Romance to All the West" and enter Yellowstone National Park at its western gateway, West Yellowstone, Mont., and this is the only gateway by which you see all of the Park in its natural sequence. In addition to five delightful days in Yellowstone, you spend one full day in Salt Lake City, the fascinating capital city of the rich Mormon state of Utah.

A "YN" Circle Tour can be made with only one business week away from your activities. Plan now to enjoy "the trip of your dreams" this summer.

Day by day story of the trip

SATURDAY—

With every detail cared for by a staff of travel experts who attend you at the Chicago & North Western's Chicago Passenger Station, you leave at 2:30 P.M. on the Gold Coast Limited, one of the "Overland Route's" famous fleet of splendid trains. All afternoon and night you travel across the heart of the richest agricultural region in the world, pausing in the early morning at Omaha where your train begins its swift flight over the Union Pacific's ribbons of steel, direct to Yellowstone. You will enjoy the roomy observation car.

SUNDAY—

Across Nebraska's grain laden fields and into Wyoming—Cheyenne, Laramie and the famous Sherman Hill where you cross the continental divide. Your dining car meals, an important part of any trans-continental rail trip will be a source of particular joy to you all the way via the "Overland Route"—unrestricted service, order whatever you wish and simply sign the check. This is a feature of all "Overland Route" Circle Tours.

MONDAY—

Arrive West Yellowstone, Mont., at 2:00 P.M. after traversing a striking stretch of mountain roadway whose ever changing series of panoramas is unsurpassed on any other route. The stately Targhee Forest—Rea's Pass—Warm River Canyon, each a scenic spectacle of the first magnitude, are a fitting prelude to Nature's treasure chest which awaits you in magic Yellowstone.

West Yellowstone is situated on the Park boundary. No time is lost in reaching the Park proper and its major attractions. The comfortable motor busses of the Yellowstone Park Transportation Co. which carry you to Old Faithful for your first overnight stop in this weird region, pause en route at Excelsior Geyser, Mammoth Paint Pots, Morning Glory Pool and other interesting formations.

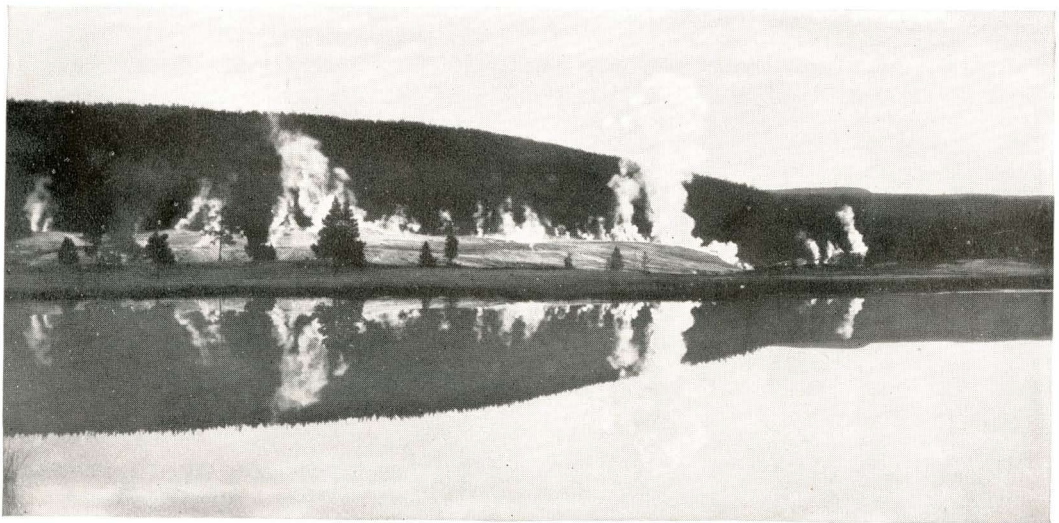
In the evening watch the bears—dance to the strains of a melodious orchestra—enjoy the entertainment around the camp fire or just rest and watch Old Faithful with a giant searchlight playing on it—a truly weird scene.

TUESDAY—

"Old Faithful" is the favorite of all of the geysers in this thrilling region because of its regularity. You have all the morning to explore this "most weird spot in the Universe" either conducted by your escort, by a member of the National Park Service, or "go-as-you-please." In the afternoon you motor across the continental divide to lovely Yellowstone Lake where you spend the night—an unusual trip if you are not "held up" en route by a "grizzly" or a cinnamon.

WEDNESDAY—

In the morning en route to the canyon, you stop at magic Mud Geyser, arriving at the Canyon in time for luncheon. Words fail you—you catch your breath anew at each new



The Upper Geyser Basin—Yellowstone National Park

view of the Yellowstone Falls in its stupendous setting, as you make your way from one vantage point to another afoot, in the saddle or by bus.

THURSDAY—

For the more venturesome, "Uncle Tom's Trail" to the foot of the lower falls offers a challenge. After luncheon, again by bus, you set out for Mammoth Hot Springs by way of Dunraven Pass, stopping en route at Tower Falls. You spend the night at Mammoth which is the headquarters not only for the park's hotel, lodge and transportation companies but also for the park superintendent.

FRIDAY—

All morning is yours to spend as you wish, inspecting the terraces of Mammoth Hot Springs which, since the destruction of the pink and white terraces of New Zealand, stand without counterpart in the world. After luncheon you motor past dazzling Obsidian Cliff, see Gibbon Falls and hundreds of other interesting sights—stop at Norris Geyser Basin and arrive at West Yellowstone for dinner in the Union Pacific's excellent dining room. A comfortable over-night journey by train brings you to Salt Lake City.

SATURDAY—

Arriving in Salt Lake City at 7:30 A.M., you breakfast at the beautiful Hotel Utah, your headquarters for the day. An automobile tour of the city gives you an intensely interesting picture of historic as well as modern Mormon culture and terminates at the Mormon Temple Grounds for a delightful noon-day organ recital in the tabernacle. After luncheon at the Hotel Utah which is directly across the way from the Temple Grounds, you motor to Saltair Beach, situated on Great Salt Lake. Ample time is allowed to enjoy a dip in the buoyant waters of the most unique salt sea on the globe—returning to your train which leaves at 5:45 P.M. for the journey "back home."

SUNDAY—

En route across Wyoming and Nebraska via the "Overland Route" surrounded by every travel luxury of the famous Los Angeles Limited. Again the delicious dining car meals add infinitely to your supreme contentment.

MONDAY—

After breakfast, in the diner, you arrive in Chicago at 9:20 A.M. refreshed and reluctant to leave the pleasant companions who have helped materially to make your trip most enjoyable.

"YN" CIRCLE TOURS

LEAVE CHICAGO AS FOLLOWS:

Tour	Tour	Tour	Tour
YN-1 Sat., June 21	YN-4 Sat., July 12	YN-7 Sat., Aug. 2	YN-10 Sat., Aug. 23
YN-2 Sat., June 28	YN-5 Sat., July 19	YN-8 Sat., Aug. 9	YN-11 Sat., Aug. 30
YN-3 Sat., July 5	YN-6 Sat., July 26	YN-9 Sat., Aug. 16	YN-12 Sat., Sept. 6

Detailed Schedule

Lv. Chicago.....	2:30 p. m.	1st day	Saturday	C. & N. W. Ry.
Ar. Omaha.....	3:20 a. m.	2nd day	Sunday	"
Lv. Omaha.....	3:45 a. m.	2nd day	Sunday	Un. Pac. Sys.
Ar. West Yellowstone.....	2:00 p. m.	3rd day	Monday	"
Lv. West Yellowstone.....	2:30 p. m.	3rd day	Monday	Automobile



Salt Lake City, Utah, Showing Mormon Temple and State Capitol

Ar. Old Faithful.....	4:57 p. m.	3rd day	Monday	Automobile
Lv. Old Faithful.....	1:50 p. m.	4th day	Tuesday	"
Ar. Lake.....	4:58 p. m.	4th day	Tuesday	"
Lv. Lake.....	10:00 a. m.	5th day	Wednesday	"
Ar. Grand Canyon.....	11:46 a. m.	5th day	Wednesday	"
Lv. Grand Canyon.....	1:35 p. m.	6th day	Thursday	"
Ar. Mammoth Hot Springs....	4:47 p. m.	6th day	Thursday	"
Lv. Mammoth Hot Springs....	1:30 p. m.	7th day	Friday	"
Ar. West Yellowstone.....	4:40 p. m.	7th day	Friday	"
Lv. West Yellowstone.....	7:00 p. m.	7th day	Friday	Un. Pac. Sys.
Ar. Salt Lake City.....	7:30 a. m.	8th day	Saturday	"
Headquarters—Hotel Utah				
Lv. Salt Lake City.....	5:45 p. m.	8th day	Saturday	"
Ar. Omaha.....	8:35 p. m.	9th day	Sunday	"
Lv. Omaha.....	9:00 p. m.	9th day	Sunday	C. & N. W. Ry.
Ar. Chicago.....	9:20 a. m.	10th day	Monday	"

Cost of Complete Tour

FROM CHICAGO RETURNING TO CHICAGO

	With Rail Ticket	Without Rail Ticket
Two passengers occupying lower berth, each.....	\$141.98	\$ 82.63
One passenger occupying lower berth.....	157.86	98.51
One passenger occupying upper berth.....	151.50	92.15
Two passengers occupying compartment, each.....	170.85	111.50
Two passengers occupying drawing room, each.....	182.10	122.75
Three passengers occupying drawing room, each.....	163.44	104.09

Additional compartment and drawing room rates on application also rates for incomplete tours

The above rates, shown with and without railroad fare of \$59.35 from Chicago, are based on "Lodge Way" in Yellowstone, rates via hotels in Yellowstone \$8.50 higher.



Garden of the Gods, Pikes Peak in the distance



TWELVE DAY "YRG" CIRCLE TOUR

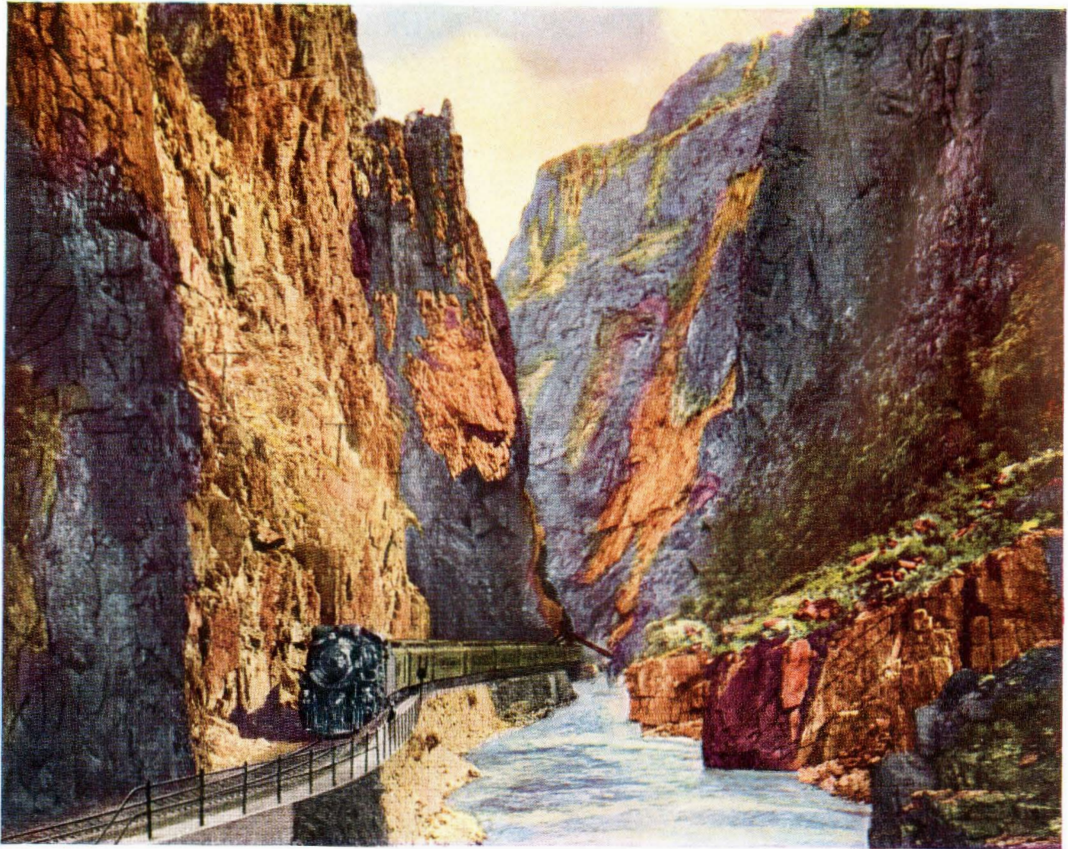
Yellowstone—Salt Lake City—The Royal Gorge— Colorado Springs and Denver

Combining a trip through the renowned Royal Gorge and a visit to Colorado Springs and Denver, with the wonders of Yellowstone and the charm of Salt Lake City, the YRG-Circle tour offers an enticing travel bargain—12 full days with pleasant companions spent amid the splendors of the great West at a cost of less than \$200.00 including every necessary item of expense.

You go direct to Yellowstone from Chicago via the scenic "Overland Route." Nearly five full days are spent amidst world famous geysers, prismatic pools, gorgeous rock terraces, the incomparable beauty of Yellowstone Falls and the colorful canyon which frames it. Your schedule through the park follows the route of the "YN" Circle Tour.

From Yellowstone, you travel overnight to Salt Lake City for a day filled with interest including the historic Mormon Temple Grounds and unusual Saltair Beach. Special provisions made at Salt Lake City for those who desire to attend church service, just speak to your escort on Saturday evening and he will arrange.

En route from Salt Lake City to Colorado Springs you travel through one of the most famous canyons traversed by any rail line—the Royal Gorge of the Arkansas River. The sheer heights of its towering walls, its dazzling beauty, the surging stream along whose banks your train travels, present a spectacle, the beauty of which one never forgets. In addition to the Royal Gorge you view, by daylight, the startling section centering about Tennessee Pass.



Enroute through the Royal Gorge

In Colorado Springs you make your headquarters at the metropolitan Antlers Hotel—room with bath. A full day here offers you a choice of things to do and see—all of which are included at no extra cost, of course.

In the morning you may enjoy a thrilling trip to Pike's Peak by motor viewing wonderful panoramas of the surrounding country from its lofty summit. In the afternoon, motor to the Garden of the Gods, Manitou Mineral Springs, Seven Falls and South Cheyenne Canyon.

There may be some who, on account of the altitude, or for other reasons do not wish to take the trip to the summit of Pikes Peak, in connection with the South Drive. For these passengers the all-day trip is available. This trip includes the South Drive and continues up Ute Pass through the Pike National Forest to Cascade, Woodland Park and the Florissant Petrified Forest (luncheon at pavilion). The Cripple Creek district is next reached (the world famous gold mining camp) where time is allowed to visit the gold mines. The return trip is over the Corley Mountain Highway, terminating at the Antlers Hotel.

Leaving Colorado Springs in the late evening, you arrive in Denver early next morning. Denver, famous for its enterprise and industry, is equally renowned as a convention and vacation city. It is the gateway to Rocky Mountain National Park as well as the possessor of a unique system of mountain parks of its own.

On your morning trip, you motor over the picturesque Lariat Trail to Lookout Mountain, where from the veranda of an elaborate museum, dedicated to Buffalo Bill's memory, you get a commanding view of Denver and the plains to the east. Your return to Denver is through Bergen Park, Bear Creek Canyon and the Park of the Red Rocks.

Shortly after a leisurely luncheon at the Cosmopolitan Hotel, Denver's largest hostelry, you begin your return journey, via the "Overland Route" to Chicago, traveling on the Columbine—"The Flower of Travel Comfort"—the Union Pacific, Chicago & North Western de luxe Colorado train.

"YRG" CIRCLE TOURS

LEAVE CHICAGO AS FOLLOWS:

Tour	Tour	Tour	Tour
YRG-0 Sun., June 15	YRG- 8 Sun., July 13	YRG-14 Sun., Aug. 3	YRG-20 Sun., Aug. 24
YRG-2 Sun., June 22	YRG-10 Sun., July 20	YRG-16 Sun., Aug. 10	YRG-22 Sun., Aug. 31
YRG-4 Sun., June 29	YRG-12 Sun., July 27	YRG-18 Sun., Aug. 17	YRG-24 Sun., Sept. 7
YRG-6 Sun., July 6			

Detailed Schedule

Lv. Chicago.....	2:30 p. m.	1st day	Sunday	C. & N. W. Ry.
Ar. Omaha.....	3:20 a. m.	2nd day	Monday	"
Lv. Omaha.....	3:45 a. m.	2nd day	Monday	Un. Pac. Sys.
Ar. West Yellowstone.....	2:00 p. m.	3rd day	Tuesday	"
Lv. West Yellowstone.....	2:30 p. m.	3rd day	Tuesday	Automobile
Ar. Old Faithful.....	4:57 p. m.	3rd day	Tuesday	"
Lv. Old Faithful.....	1:50 p. m.	4th day	Wednesday	"
Ar. Lake.....	4:58 p. m.	4th day	Wednesday	"
Lv. Lake.....	10:00 a. m.	5th day	Thursday	"
Ar. Grand Canyon.....	11:46 a. m.	5th day	Thursday	"
Lv. Grand Canyon.....	1:35 p. m.	6th day	Friday	"
Ar. Mammoth Hot Springs....	4:47 p. m.	6th day	Friday	"
Lv. Mammoth Hot Springs....	1:30 p. m.	7th day	Saturday	"
Ar. West Yellowstone.....	4:40 p. m.	7th day	Saturday	"
Lv. West Yellowstone.....	7:00 p. m.	7th day	Saturday	Un. Pac. Sys.
Ar. Salt Lake City.....	7:30 a. m.	8th day	Sunday	"

Headquarters—Hotel Utah

Lv. Salt Lake City.....	6:15 p. m.	8th day	Sunday	D.&R.G.W.R.R.
Ar. Colorado Springs.....	4:45 p. m.	9th day	Monday	"

Headquarters—Antlers Hotel

Lv. Colorado Springs.....	*5:25 a. m.	11th day	Wednesday	"
Ar. Denver.....	8:00 a. m.	11th day	Wednesday	"

Headquarters—Cosmopolitan Hotel

Lv. Denver.....	3:45 p. m.	11th day	Wednesday	Un. Pac. Sys.
Ar. Omaha.....	6:30 a. m.	12th day	Thursday	"
Lv. Omaha.....	6:45 a. m.	12th day	Thursday	C. & N. W. Ry.
Ar. Chicago.....	7:45 p. m.	12th day	Thursday	"

*Sleepers open for occupancy at 9:30 p.m.

Cost of Complete Tour

FROM CHICAGO, RETURNING TO CHICAGO

	With Rail Ticket	Without Rail Ticket
Two persons occupying a lower berth, each.....	\$173.76	\$114.41
One person occupying a lower berth.....	192.26	132.91
One person occupying an upper berth.....	184.85	125.50
Two persons occupying a compartment, each.....	207.50	148.15
Two persons occupying a drawing room, each.....	220.25	160.90
Three persons occupying a drawing room, each.....	198.59	139.24

Additional compartment and drawing room rates, also rates for incomplete tours on application.

The above rates, shown with and without rail fare from Chicago, are based on the "Lodge Way" through Yellowstone; if Hotels are used in Yellowstone the rate is \$8.50 higher. Single rooms available at Antlers Hotel—additional cost, \$2.00.



TWELVE DAY "YR" CIRCLE TOUR

Yellowstone and Rocky Mountain National Parks Salt Lake City—Ogden and Denver

Both Yellowstone and Rocky Mountain National Parks, two of the largest and most popular National Parks, can be comfortably visited during the 1930 season on our twelve day "YR" Circle tours, which include as well, pleasure-packed hours in two western states' capital cities, conspicuous for their romantic history and unique charm.

From Chicago your route is direct to Salt Lake City via the shortest natural route—that followed by all of our tours, the "Overland Route." You spend Wednesday in Salt Lake City,

making the City sightseeing trip—attend the organ recital in the Tabernacle—visit Saltair Beach then motor to Ogden for dinner and a drive through beautiful Ogden Canyon.

In Yellowstone, you make the entire five day circle trip, including *all* of the major attractions of the Park and then go direct to Greeley, Colorado, traveling through the magnificently impressive region between West Yellowstone, Montana, and Victor, Idaho, by daylight viewing, from the train, the towering Tetons in the distance. At Greeley, the comfortable motor busses of the Rocky Mountain Parks Transportation Co. await your arrival to carry you into the heart of the Colorado Rockies.

Your introduction to the rugged grandeur of "Colorful Colorado" is the Big Thompson Canyon through which you motor en route to the Estes Park Chalets. A splendid highway carved out of sheer rock walls which embrace a frantic, foaming river, skirts the fascinating water's edge first on one side, then on the other. Big Thompson Canyon will intrigue you.

Estes Park Chalets, where you spend the night and the next day, offers an unlimited variety of outdoor activities and a charm of fireside friendliness that is most refreshing. The clean, pure air—the crisp, cool nights and the brilliant sunshiny days are invigorating to the "nth" degree. Community singing and dancing in the evening rounds out a perfect day of surprises and thrills.

The ride from the Chalets, across the con-



"The Big Thompson Canyon Will Intrigue You"

continental divide at Milner Pass to Grand Lake, takes you close to the tips of the towering peaks which you have viewed from the valleys below, and unfolds a succession of breath-taking views that defy description.

Mountains completely encircle Grand Lake, and the picturesque cabin village where you remain overnight—Grand Lake Lodge—is situated above and overlooking the magnificent jewel-like setting of a lovely lake in majestic mountains.

From Grand Lake to Denver, an all-day motor trip takes you across the continental divide at Berthoud Pass and down through Clear Creek Canyon, with its chain of gold mines, to Idaho Springs for luncheon.

Idaho Springs was named for the hot radio-active springs which have been very effective in treating various chronic ailments. In addition to the mines producing gold, silver, lead, zinc and copper, this region is noted for the ores from which the dynamic energy of radium was first extracted. At the roadside close to the town, a memorial stone marks the spot where George A. Jackson made the first of his sensational discoveries of gold on January 7, 1859.

From Idaho Springs, the highway leads through Denver's famous mountain parks to Lookout Mountain, where you have an opportunity to visit the fascinating museum, dedicated to one of the West's most famous characters—Buffalo Bill. Leaving Lookout Mountain, your descent to the plains below is over the spectacular Lariat Trail to Golden, home of the Colorado School of Mines, thence to Denver, arriving at the Cosmopolitan Hotel in time for a stroll about town before dinner.

In the late evening you leave for Chicago and home again, via the delightful "Overland Route." The comfortable ride—hours of pleasant companionship in the Observation Car, together with "Meals that appeal," will rest and refresh you.

"YR" CIRCLE TOURS

LEAVE CHICAGO AS FOLLOWS:

Tour	Tour	Tour	Tour
YR-1 Mon., June 16	YR- 7 Mon., July 7	YR-13 Mon., July 28	YR-19 Mon., Aug. 18
YR-3 Mon., June 23	YR- 9 Mon., July 14	YR-15 Mon., Aug. 4	YR-21 Mon., Aug. 25
YR-5 Mon., June 30	YR-11 Mon., July 21	YR-17 Mon., Aug. 11	YR-23 Mon., Sept. 1

Detailed Schedule

Lv. Chicago.....	8:10 p. m.		Monday	C. & N. W. Ry.
Ar. Omaha.....	8:20 a. m.	1st day	Tuesday	"
Lv. Omaha.....	8:45 a. m.	1st day	Tuesday	Un. Pac. Sys.
Ar. Salt Lake City.....	10:35 a. m.	2nd day	Wednesday	"
Headquarters—Hotel Utah, Salt Lake City—Hotel Bigelow, Ogden.				
Lv. Ogden.....	9:05 p. m.	2nd day	Wednesday	"
Ar. West Yellowstone.....	7:30 a. m.	3rd day	Thursday	"
Lv. West Yellowstone.....	9:30 a. m.	3rd day	Thursday	Automobile
Ar. Old Faithful.....	11:46 a. m.	3rd day	Thursday	"
Lv. Old Faithful.....	1:50 p. m.	4th day	Friday	"
Ar. Lake.....	4:58 p. m.	4th day	Friday	"
Lv. Lake.....	10:00 a. m.	5th day	Saturday	"
Ar. Grand Canyon.....	11:46 a. m.	5th day	Saturday	"
Lv. Grand Canyon.....	1:35 p. m.	6th day	Sunday	"
Ar. Mammoth Hot Springs....	4:47 p. m.	6th day	Sunday	"
Lv. Mammoth Hot Springs.....	8:55 a. m.	7th day	Monday	"
Ar. West Yellowstone.....	11:10 a. m.	7th day	Monday	"
Lv. West Yellowstone.....	1:15 p. m.	7th day	Monday	Un. Pac. Sys.
Ar. Greeley.....	12:47 p. m.	8th day	Tuesday	"
Lv. Greeley.....	1:15 p. m.	8th day	Tuesday	Automobile



Grand Lake—Home of "The Highest Yacht Club in the World"

Ar. Estes Park Chalets.....	4:15 p. m.	8th day	Tuesday	Automobile
Lv. Estes Park Chalets.....	1:30 p. m.	9th day	Wednesday	"
Ar. Grand Lake.....	5:30 p. m.	9th day	Wednesday	"
Lv. Grand Lake.....	8:15 a. m.	10th day	Thursday	"
Ar. Idaho Springs.....	11:45 a. m.	10th day	Thursday	"
Lv. Idaho Springs.....	1:00 p. m.	10th day	Thursday	"
Ar. Denver.....	4:30 p. m.	10th day	Thursday	"
Headquarters—Cosmopolitan Hotel.				
Lv. Denver.....	11:30 p. m.	10th day	Thursday	Un. Pac. Sys.
Ar. Omaha.....	3:25 p. m.	11th day	Friday	"
Lv. Omaha.....	3:45 p. m.	11th day	Friday	C. & N. W. Ry.
Ar. Chicago.....	6:45 a. m.	12th day	Saturday	"

Cost of Complete Tour

FROM CHICAGO, RETURNING TO CHICAGO	With Rail Ticket	Without Rail Ticket
Two persons occupying lower berth, each.....	\$193.38	\$134.03
One person occupying a lower berth.....	211.51	152.16
One person occupying an upper berth.....	204.25	144.90
Two persons occupying a compartment, each.....	226.38	167.03
Two persons occupying a drawing room, each.....	239.50	180.15
Three persons occupying a drawing room, each.....	218.09	158.74

Additional compartment and drawing room rates, also rates for incomplete tours on application

The above rates shown with and without rail fare from Chicago are based on the "Lodge Way" through Yellowstone. If Hotels are used in Yellowstone the rate is \$8.50 higher.

Y

THIRTEEN AND FOURTEEN DAY "Y" CIRCLE TOURS

Yellowstone and Rocky Mountain National Parks— Salt Lake City—Ogden—Denver and Colorado Springs

Two National Parks in two weeks . . . 3640 miles of travel luxury via the historic, scenic "Overland Route" . . . more than 500 miles of comfortable motoring over some of the finest mountain highways in the world . . . well-planned hours of varied entertainment in and about four of the most fascinating cities of the western mountain states . . . all are included in the thirteen and fourteen day "Y" Circle tours for the 1930 season.

Here is the way you may traverse the travel trail which for years has been one of the most popular of all two weeks western vacation trips.

The thirteen day "Y" Circle tour—Leaves Chicago Monday

The fourteen day "Y" Circle tour—Leaves Chicago Saturday

DAY BY DAY STORY OF THE TRIP

MONDAY—SATURDAY—

Exciting? Of course—there's always a tense few moments preceding the "All Aboard" which starts you on your way at 8:10 P.M. when you glide away from the Chicago and North Western's busy Chicago Passenger Station. You head due west aboard the Los Angeles Limited, the "Overland Route's" deluxe train to Southern California with all the features of extra-fare service, yet without extra cost. Overnight you travel across Illinois and Iowa via the "North Western," the only double-track railroad between Chicago and Omaha, and the only one protected all the way between these cities by continuous automatic train control equipment.

TUESDAY—SUNDAY—

At Omaha, in the morning, you stop briefly before setting out over the Union Pacific's matchless roadbed for an interesting journey across Nebraska and into Wyoming, following all along, the route flown by the transcontinental air-mail planes—the shortest route direct to the Pacific Coast.

WEDNESDAY—MONDAY—

Through beautiful, winding Weber Canyon in the morning—a stop at Ogden, Utah, and you arrive in Salt Lake City in time for the interesting motor trip around the city. At noon you enjoy the organ recital in the Mormon Tabernacle—a treat for which many people travel all the way across the continent. After luncheon at the Hotel Utah and an afternoon trip to unique Saltair Beach where you may enjoy the novelty of bathing in Great Salt Lake, you motor through City Creek Canyon to Ogden, the Ogden Canyon and thence to the Bigelow Hotel for dinner. Overnight from Ogden to Yellowstone.

THURSDAY—TUESDAY—

West Yellowstone, Mont., where you arrive for breakfast, is the Union Pacific's western gateway—by far the most popular entrance to the Park. In the morning, en route by motor to Old Faithful you stop at Fountain Paint Pots and at the Great Fountain Geyser, arriving for luncheon at Old Faithful where you remain overnight. The afternoon is devoted to a trip over the formations. In the evening enjoy the entertainment and dancing provided here and at all hotels and lodges on the entire tour.

FRIDAY—WEDNESDAY—

In the morning you may again explore the fantastic region about Old Faithful, on foot or in the saddle—with or without guide. After luncheon, a motor trip crossing the continental divide at two points, brings you to Yellowstone Lake for an overnight stop. Fishing, boating, watching the bears at their evening meal or just resting will occupy your time.



Mammoth Hot Springs—Yellowstone National Park

SATURDAY—THURSDAY—

The morning ride to Canyon, with a stop at Mud Geyser, takes you across Hayden Valley—a famous winter haven of Yellowstone's tremendous herds of elk. The Grand Canyon of the Yellowstone—breath-taking in its grandeur and impressive beyond description—can be viewed in all its multi-colored moods during the full day which you spend on its brink.

SUNDAY—FRIDAY—

Nothing could be more inspiring than a day at the Canyon. All morning is yours to go as you please and after luncheon a fascinating motor trip over spectacular Dunraven Pass, stopping at Tower Falls and skirting the Canyon at a point where it is enchantingly different, brings you to Mammoth Hot Springs for an overnight stop.

MONDAY—SATURDAY—

In the morning you have the opportunity to visit the terraces at Mammoth before leaving by motor bus for West Yellowstone. En route to the western entrance to the Park, you stop at Norris Geyser Basin—the most unusual and varied group of freak formations in the Park. Luncheon at Union Pacific's Dining room, and you leave for Colorado's mountain playgrounds, traveling through the magnificent region between Yellowstone and Ashton, Idaho, by daylight. The mighty peaks of Grand Teton National Park can be seen in the distance.

TUESDAY—SUNDAY—

The big red busses of the Rocky Mountain Parks Transportation Co. are all set for you when you arrive at Greeley, Colorado, at noontime. They carry you across fertile irrigated, crop laden acres and then into the mountains via the Big Thompson Canyon—a perfect and startling introduction to the glories of Colorado's Rockies whose charm captivates you. The busses arrive at the Estes Park Chalets in midafternoon. Your stop at the Chalets—the warm welcome, the cheer of great log fires, the excellent meals, the attentive service and the clean, pure pine-scented air—is an experience you'll never forget.

Rocky Mountain National Park with its superb Alpine landscapes and towering granite peaks includes the finest grouping of mountain scenery in the entire Rockies. Dominating the Park stand the lofty peaks of the Continental Divide. Here you will find activities to suit every taste—in following any of the innumerable trails, each turn disclosing new vistas surprising in their loveliness and incomparable beauty—either hiking, horseback riding or auto trips may be arranged.

As the sun dips below the jagged peaks of the western horizon and the purple haze of twilight creeps through the Park far different forms of entertainment beckon—from the ballroom calls the captivating music of the dance—in the game room are the card games, but many will prefer to stroll in the silvery moonlight.

WEDNESDAY—TUESDAY—

All morning is yours to hike, ride, golf, fish, swim or just to loaf luxuriously in big easy chairs or on the broad verandas with all outdoors before you. In the afternoon you are driven across the continental divide to gorgeous Grand Lake, where you spend the night.

THURSDAY—WEDNESDAY—

From Grand Lake to Denver, you cross the continental divide at Berthoud Pass, motor through Clear Creek Canyon to Idaho Springs for luncheon and then climb back up through Denver's mountain parks only to drop down again, from Lookout Mountain on the picturesque Lariat Trail to Golden, Colorado, and thence into Denver in the afternoon—an all day trip crammed full of thrilling scenes of unlimited variety. Dinner is served at the Cosmopolitan Hotel and in the late evening you entrain for Colorado Springs.

FRIDAY—THURSDAY—

In Colorado Springs for the day, you dine at the Antlers Hotel from where your motor trips are made. You have a choice of a trip to Pikes Peak in the morning and a drive to the Garden of the Gods, South Cheyenne Canyon and Seven Falls in the afternoon or, an all-day trip to Cripple Creek through the Florissant Petrified Forest returning over the famous Corley Mountain Highway. Your train leaves after dinner for Denver and Chicago.

SATURDAY—FRIDAY—

Swift mile after mile of comfortable, clean "Overland Route" travel by train—enhanced, as always, by "dining car meals that appeal."

SUNDAY—SATURDAY—

You arrive at the Chicago & North Western Chicago Passenger Station at 6:45 A.M. The end of a perfect trip.



"Y" CIRCLE TOURS

LEAVE CHICAGO AS FOLLOWS:

Tour	Tour	Tour	Tour
Y-0 Sat., June 14	Y- 7 Mon., July 7	Y-13 Mon., July 28	Y-19 Mon., Aug. 18
Y-1 Mon., June 16	Y- 8 Sat., July 12	Y-14 Sat., Aug. 2	Y-20 Sat., Aug. 23
Y-2 Sat., June 21	Y- 9 Mon., July 14	Y-15 Mon., Aug. 4	Y-21 Mon., Aug. 25
Y-3 Mon., June 23	Y-10 Sat., July 19	Y-16 Sat., Aug. 9	Y-22 Sat., Aug. 30
Y-4 Sat., June 28	Y-11 Mon., July 21	Y-17 Mon., Aug. 11	Y-23 Mon., Sept. 1
Y-5 Mon., June 30	Y-12 Sat., July 26	Y-18 Sat., Aug. 16	Y-24 Sat., Sept. 6
Y-6 Sat., July 5			

Detailed Schedule

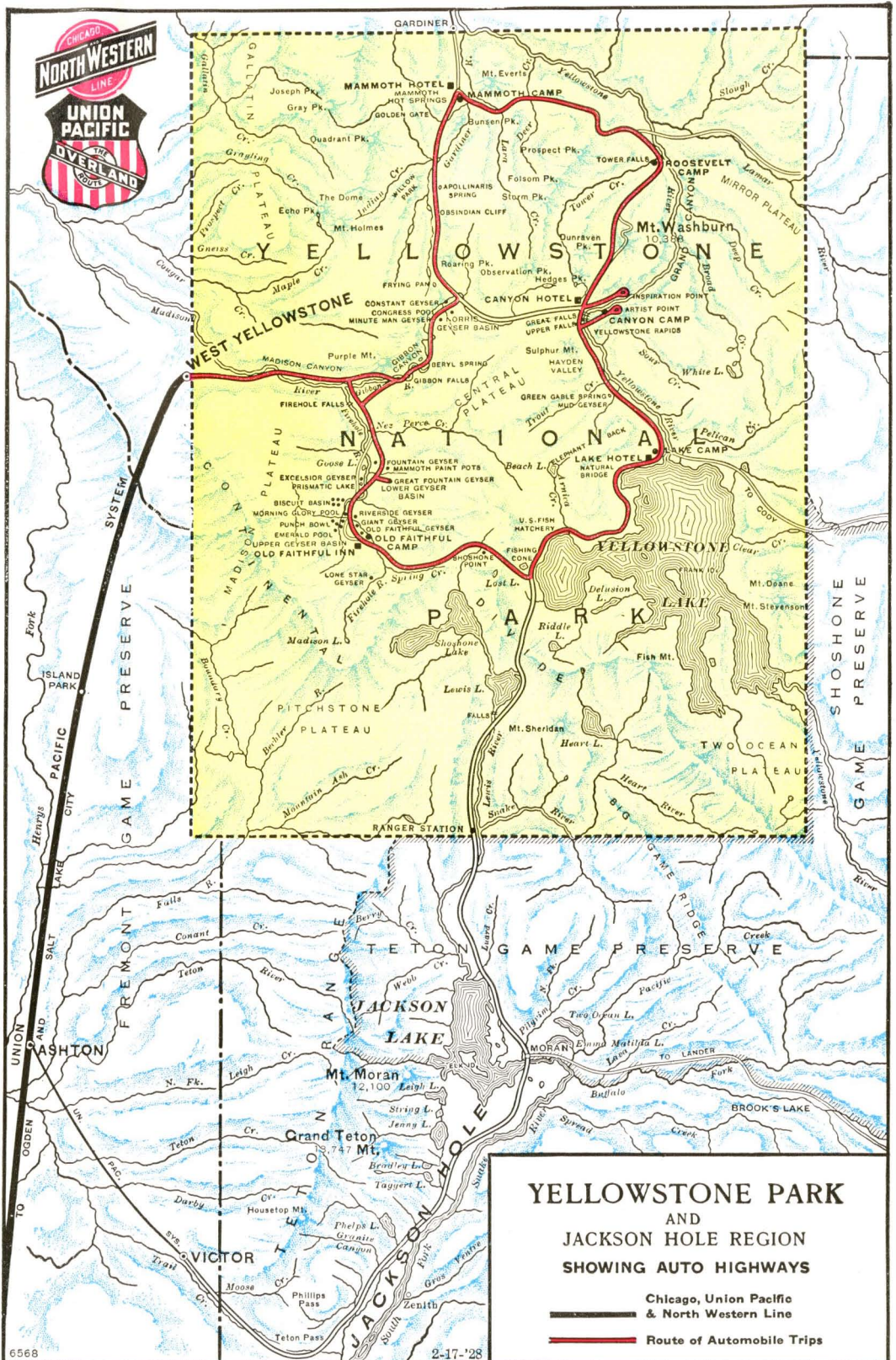
Lv. Chicago.....	8:10 p. m.	Monday	Saturday	C. & N. W. Ry.
Ar. Omaha.....	8:20 a. m.	Tuesday	Sunday	"
Lv. Omaha.....	8:45 a. m.	Tuesday	Sunday	Un. Pac. Sys.
Ar. Salt Lake City.....	10:35 a. m.	Wednesday	Monday	"
Headquarters—Salt Lake City, Hotel Utah—Ogden, Hotel Bigelow				
Lv. Ogden.....	9:05 p. m.	Wednesday	Monday	"
Ar. West Yellowstone.....	7:30 a. m.	Thursday	Tuesday	"
Lv. West Yellowstone.....	9:30 a. m.	Thursday	Tuesday	Automobile
Ar. Old Faithful.....	11:46 a. m.	Thursday	Tuesday	"
Lv. Old Faithful.....	1:50 p. m.	Friday	Wednesday	"
Ar. Lake.....	4:58 p. m.	Friday	Wednesday	"
Lv. Lake.....	10:00 a. m.	Saturday	Thursday	"
Ar. Grand Canyon.....	11:46 a. m.	Saturday	Thursday	"
Lv. Grand Canyon.....	1:35 p. m.	Sunday	Friday	"
Ar. Mammoth Hot Springs.....	4:47 p. m.	Sunday	Friday	"
Lv. Mammoth Hot Springs.....	8:55 a. m.	Monday	Saturday	"
Ar. West Yellowstone.....	11:10 a. m.	Monday	Saturday	"
Lv. West Yellowstone.....	1:15 p. m.	Monday	Saturday	Un. Pac. Sys.
Ar. Greeley.....	12:47 p. m.	Tuesday	Sunday	"
Lv. Greeley.....	1:15 p. m.	Tuesday	Sunday	Automobile
Ar. Estes Park Chalets.....	4:15 p. m.	Tuesday	Sunday	"
Lv. Estes Park Chalets.....	1:30 p. m.	Wednesday	Tuesday	"
Ar. Grand Lake.....	5:30 p. m.	Wednesday	Tuesday	"
Lv. Grand Lake.....	8:15 a. m.	Thursday	Wednesday	"
Ar. Denver.....	4:30 p. m.	Thursday	Wednesday	"
Headquarters—Cosmopolitan Hotel				
Lv. Denver.....	11:30 p. m.	Thursday	Wednesday	C. & S. Ry.
Ar. Colorado Springs.....	1:50 a. m.	Friday	Thursday	"
Sleepers occupied until 7:00 o'clock.				
Headquarters—Antlers Hotel				
Lv. Colorado Springs.....	7:55 p. m.	Friday	Thursday	"
Ar. Denver.....	10:25 p. m.	Friday	Thursday	"
Lv. Denver.....	11:30 p. m.	Friday	Thursday	Un. Pac. Sys.
Ar. Omaha.....	3:25 p. m.	Saturday	Friday	"
Lv. Omaha.....	3:45 p. m.	Saturday	Friday	C. & N. W. Ry.
Ar. Chicago.....	6:45 a. m.	Sunday	Saturday	"

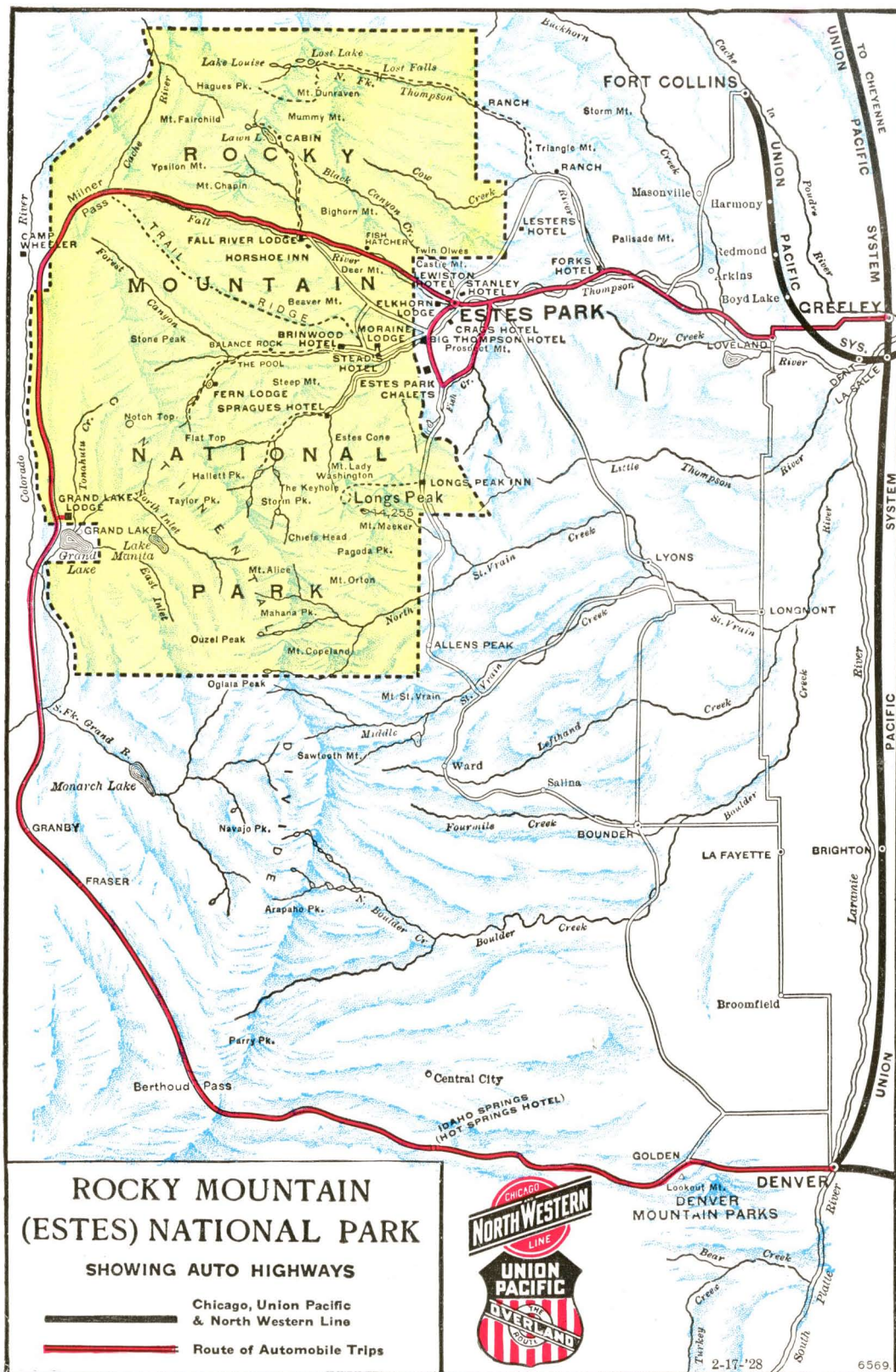
Cost of Complete 13 and 14 Day Tours

FROM CHICAGO, RETURNING TO CHICAGO	Monday, 13-day Tour		Saturday, 14-day Tour	
	With Rail Ticket	Without Rail Ticket	With Rail Ticket	Without Rail Ticket
Two persons occupying a lower berth, each..	\$206.03	\$146.68	\$212.03	\$152.68
One person occupying a lower berth.....	225.41	166.06	231.41	172.06
One person occupying an upper berth.....	217.65	158.30	223.65	164.30
Two persons occupying a compartment, each..	241.28	181.93	247.28	187.93
Two persons occupying a drawing room, each..	255.40	196.05	261.40	202.05
Three persons occupying a drawing room, each	232.49	173.14	238.49	179.14

Additional compartment and drawing room rates, also rates for incomplete tours on application

The above rates shown with and without rail fare from Chicago are based on the "Lodge Way" through Yellowstone, if Hotels are used in Yellowstone the rate is \$8.50 higher.



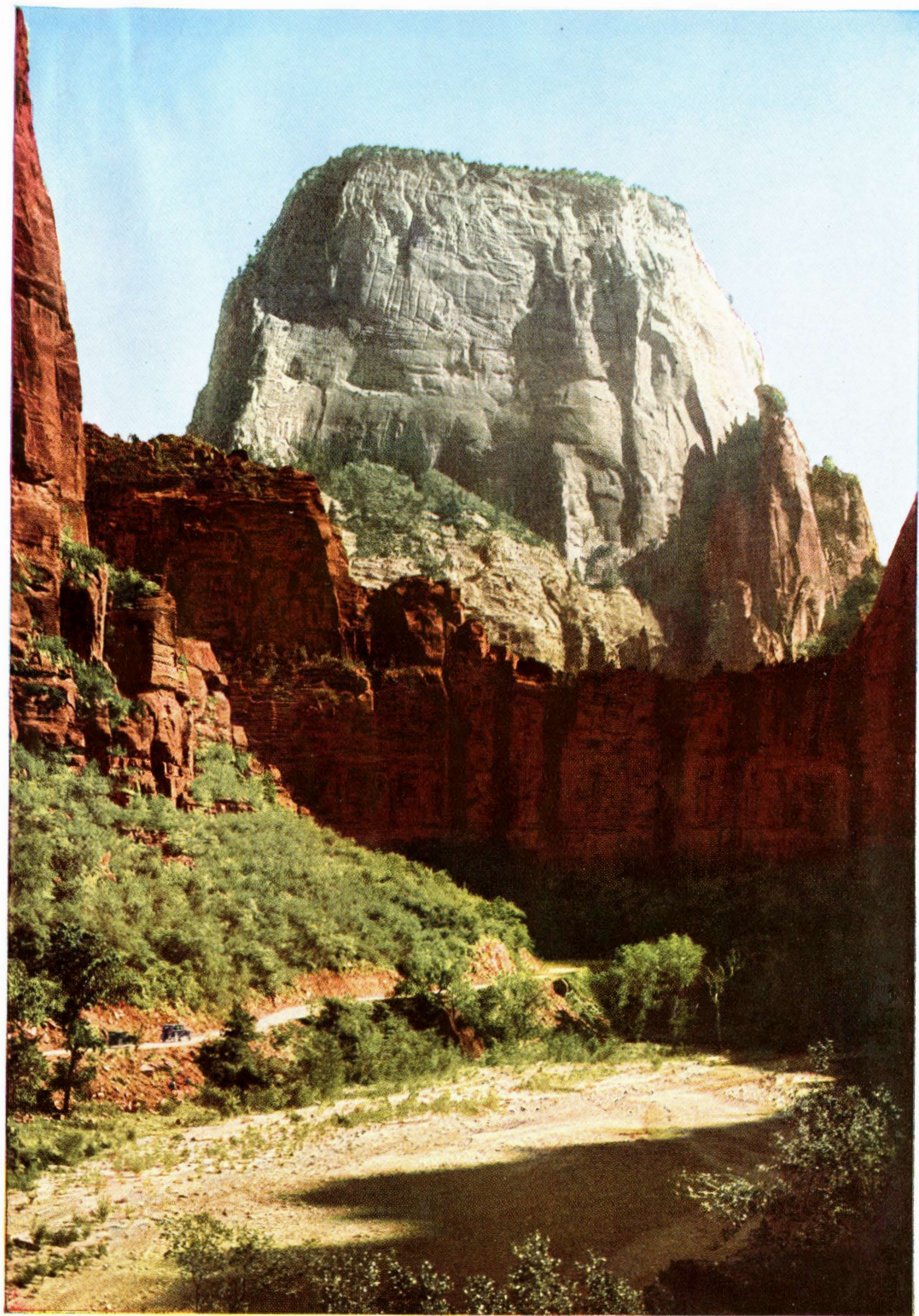


ROCKY MOUNTAIN (ESTES) NATIONAL PARK

SHOWING AUTO HIGHWAYS

- Chicago, Union Pacific
& North Western Line
- Route of Automobile Trips





The Great White Throne—Zion National Park



*Natural color photograph
by Frank G. Fulton*

A Typical DeLuxe Cabin in Utah-Arizona Wonderlands



FOURTEEN DAY "Z" CIRCLE TOUR

Zion—Grand Canyon—Bryce Canyon—National Parks Cedar Breaks— Salt Lake City—Royal Gorge—Colorado Springs and Denver

In Southern Utah and its neighboring Arizona region, America's newest and most colorful vacationland has been made easily accessible within the past few years. A veritable frontier fairyland, just emerging from the pioneer stage of existence, this spectacular region offers the greatest variety of scenic splendors to be found in any area on the globe in so short a period of precious vacation days.

The fourteen day "Z" Circle tours which leave Chicago every Sunday from June 15 to September 7, spend seven days in the Utah-Arizona country and a full day in Salt Lake City—the famed trip by train through the Royal Gorge of the Arkansas River—a day of thrills at Colorado Springs—and a visit to Denver.

Story of the trip—by days

SUNDAY—

Relieved of all travel cares at the very start of the trip, you leave at 2:30 P.M. on the Gold Coast Limited from the Chicago & North Western splendid Chicago Passenger Station. Due west across Illinois and Iowa your swift journey is safeguarded by continuous automatic train control equipment—an invisible guardian which assures you safety.

MONDAY—

From Omaha, which you reach in the early morning hours, you travel over the Union Pacific—across Nebraska, the northwest tip of Colorado, and into Wyoming, with stops along the line at cities famous in frontier history.

TUESDAY—

Your route takes you through beautiful Weber Canyon, near Ogden, Utah—through Ogden and Salt Lake City—along the shore of the Great Salt Lake—and terminates at Lund, Utah, in the afternoon, where the deluxe motor busses of the Utah Parks Company meet you and carry you “bag and baggage” to your first “home” in the Southern Utah region, Zion Park Lodge. And, homelike it is with its enchanting atmosphere. You arrive in time for dinner and remain for two nights and a day amidst the charm of its delightful hospitality.

WEDNESDAY—

Twenty-six miles of trails, unsurpassed in any of the National Parks, a motor trip to the Temple of Sinawava, a unique swimming pool, are but a few of the magnets to attract your crowded hours in this full day at Zion. In the evening, an impromptu entertainment, an interesting talk by the park naturalist, a dance, or a walk out under the starlit heavens will round out an inspiring day's activities.

THURSDAY—

Leaving Zion after breakfast, your motor car takes you at once over one of the most unusual mountain highway passages in the world. The new Mt. Carmel Highway, opened for the first time during the 1930 season, to regular travel, defies description. Its major tunnel, over a mile long, blasted out of the mountain side, is pierced at five points by picturesque portals, each of which frames a vast vista which is a vision of loveliness.

Beyond this new highway, your route is through quaint Mormon villages, across prismatic plains and into the impressive Kaibab National Forest, with a stop at Kanab, Utah, for luncheon. The Kaibab, a virgin stand of towering pines and graceful aspen is the home of a herd of over 20,000 deer, many large groups of which will come out to greet you as you motor through their favorite haunts. The Kaibab is also the home of the rare white-tailed squirrel.

Your all-day ride ends abruptly and most sensationally at the very brink of the Grand Canyon as your bus comes to rest at Grand Canyon Lodge—Union Pacific's gorgeous hostelry which seems to have grown out of the very walls whose startling heights it dominates. You will enjoy the comforts and the atmosphere of aristocratic informality of Grand Canyon Lodge.

FRIDAY—

All day at Grand Canyon, “the shrine of beauty lovers from all the world.” Motor trips to Cape Royal, Point Imperial, Point Sublime—saddle trips along the rim or down the trails are available. Or, perhaps you may prefer to simply bask in the sunshine on the broad veranda of the Lodge and “drink in” the stupendous panorama before you whose colorful beauty changes every hour as the sun courses its way across the heavens. Dancing and entertainment enliven the evening hours.

SATURDAY—

Retracing your motor route part of the way, you are driven through the Kaibab, across the plains to Kanab for luncheon, then to Bryce Canyon National Park where you arrive in the late afternoon. Bryce Canyon Lodge is situated only a short way from the rim of Bryce Canyon and you are quartered in the same type of homey, modern and comfortable cabins as at Zion and Grand Canyon. Bryce Canyon will awe the senses of the most imaginative with its labyrinth of grotesque but beautiful figures and fragile filigree carved in rock—flame vivid in color and tinted with every shade of the spectrum. You remain overnight at Bryce and a pleasant evening of entertainment and dancing is provided.

SUNDAY—

All day at Bryce—and there are side trips and trail trips without limit for you to choose from. A most popular all-day trip is that to Natural Bridge which may be visited best by horse-back



*Natural color photograph
by Frank G. Fulton*

In the Temple of Sinawava—Zion National Park

with an experienced guide to lead the way, entertain with his droll western wit and to act as host at luncheon out under the heavens.

MONDAY—

In the morning, again you may enjoy Bryce Canyon from its far-stretching rim or you may explore its exquisite formations from foot trails or horse trails which lead down into the canyon. After luncheon your motor busses leave for the return trip to Cedar City. The route is through unusual Red Canyon, past great areas of black angular lava from extinct volcanoes, through fine forests and open "parks" to Cedar Breaks National Monument.

An artist has counted more than sixty tints in Cedar Breaks whose series of vast amphitheatres are eroded to a depth of 2000 feet in an area of 60 square miles. As you stand on the rim of this scintillating show place you cannot help but be impressed with the power of the Creator. Aside from the massive grandeur, Cedar Breaks presents a sublimity of coloring and erosion that is enthralling. The guide will point out its many gigantic formations, such as the Walls of Jericho, Point Supreme and the Gates of the Forbidden City.

Reluctantly you leave Cedar Breaks on the last stretch of the tour among the Utah-Arizona Wonderlands. As you ride along the way, to your left in the distance can be seen the towers and temples of Zion, which only a few days before were viewed from their very bases. The drive continues on through beautiful Cedar Canyon and you arrive at Cedar City at 6:00 P.M., allowing ample time for visiting curio shops after dinner. The Pullmans leave at 8:30 P.M. for Salt Lake City, via Union Pacific System.

TUESDAY—

In Salt Lake City your headquarters are at the Hotel Utah. Breakfast over, you spend the morning in a drive over the city's broad boulevards and return to the Mormon Temple Grounds in time for a walk about the premises and for the noon-day organ recital in the historic Tabernacle. After luncheon and an afternoon visit to Saltair Beach you return to your train which leaves on the Denver and Rio Grande for Colorado Springs via the Royal Gorge.

WEDNESDAY—

The Royal Gorge of the Arkansas with its great and precipitous walls and its rushing river, whose course you follow through the narrow gorge, is the most thrilling feature of a day filled with thrills. At Colorado Springs you detrain in the late afternoon for overnight at the Antlers Hotel.

THURSDAY—

In the morning you have the option of a motor trip to the Summit of Pikes Peak. Those who, for any reason, do not care to take the Pikes Peak trip may substitute the Cheyenne Mountain Circle Trip, including the Garden of the Gods, South Cheyenne Canon, Seven Falls, etc. Train leaves at 12:30 P.M. for Denver.

Immediately upon arrival the Denver City and Parks trip will be taken, terminating at the Cosmopolitan Hotel. Automobiles are scheduled to leave the hotel at 10:30 P.M. for the Union Station.

FRIDAY—

You'll welcome the quiet comfort of your splendid train and enjoy the opportunity to ponder over the fascinating experiences of the past two weeks as you travel swiftly eastward via the historic "Overland Route." All day your train clips off mile after mile of your journey home, arriving in Omaha in the late afternoon, where you are transferred from the Union Pacific rails to those of the "North Western" for the last lap of your journey back to Chicago.

SATURDAY—

6:45 A.M.—Chicago—home.

"Z" CIRCLE TOURS

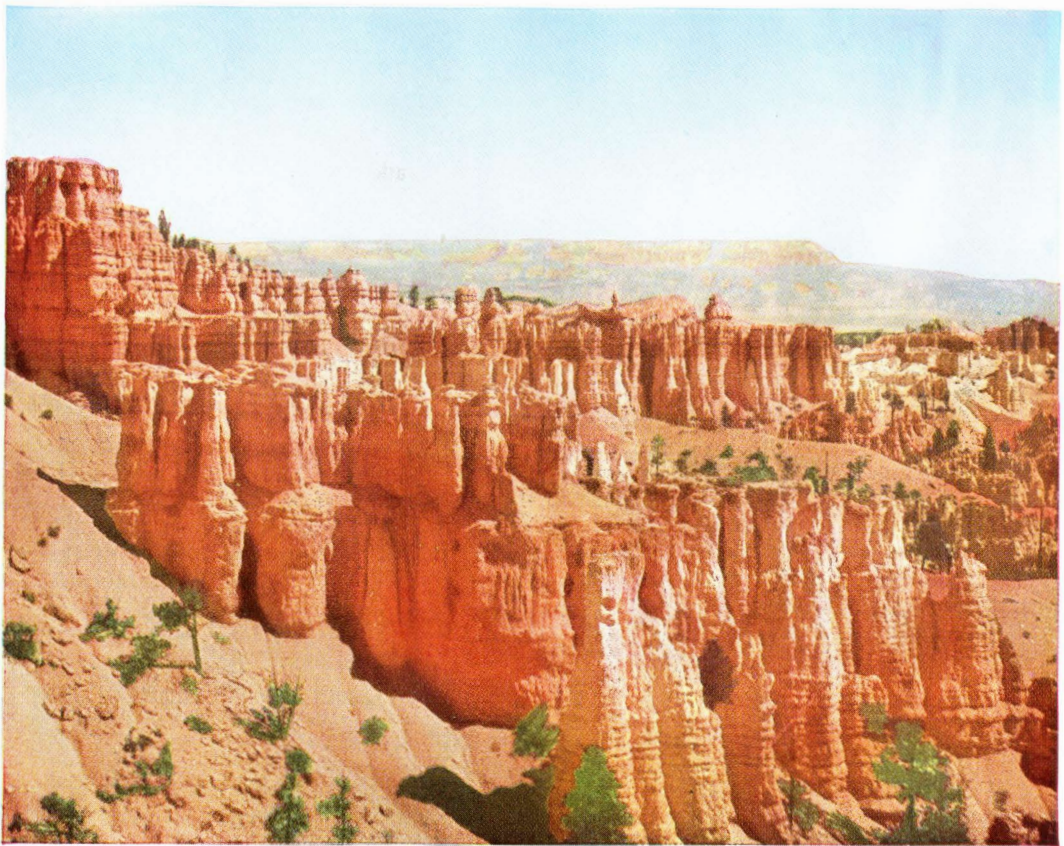
LEAVE CHICAGO AS FOLLOWS:

Tour	Tour	Tour	Tour
Z-1 Sun., June 15	Z-5 Sun., July 13	Z- 8 Sun., Aug. 3	Z-11 Sun., Aug. 24
Z-2 Sun., June 22	Z-6 Sun., July 20	Z- 9 Sun., Aug. 10	Z-12 Sun., Aug. 31
Z-3 Sun., June 29	Z-7 Sun., July 27	Z-10 Sun., Aug. 17	Z-13 Sun., Sept. 7
Z-4 Sun., July 6			

Detailed Schedule

Lv. Chicago.....	2:30 p. m.	1st day	Sunday	C. & N. W. Ry.
Ar. Omaha.....	3:20 a. m.	2nd day	Monday	"
Lv. Omaha.....	3:45 a. m.	2nd day	Monday	Un. Pac. Sys.
Ar. Lund.....	3:35 p. m.	3rd day	Tuesday	"
Lv. Lund.....	3:50 p. m.	3rd day	Tuesday	Automobile
Ar. Zion Lodge.....	7:00 p. m.	3rd day	Tuesday	"
Lv. Zion Lodge.....	10:30 a. m.	5th day	Thursday	"
Ar. Grand Canyon Lodge.....	5:45 p. m.	5th day	Thursday	"
Lv. Grand Canyon Lodge.....	8:30 a. m.	7th day	Saturday	"
Ar. Bryce Canyon Lodge.....	4:30 p. m.	7th day	Saturday	"
Lv. Bryce Canyon Lodge.....	1:00 p. m.	9th day	Monday	"
Ar. Cedar Breaks Lodge.....	3:15 p. m.	9th day	Monday	"
Lv. Cedar Breaks Lodge.....	4:00 p. m.	9th day	Monday	"
Ar. Cedar City.....	6:00 p. m.	9th day	Monday	"

Headquarters—El Escalante Hotel



Natural color photograph
by Frank G. Fulton

A Panorama of Bryce Canyon from Observation Point

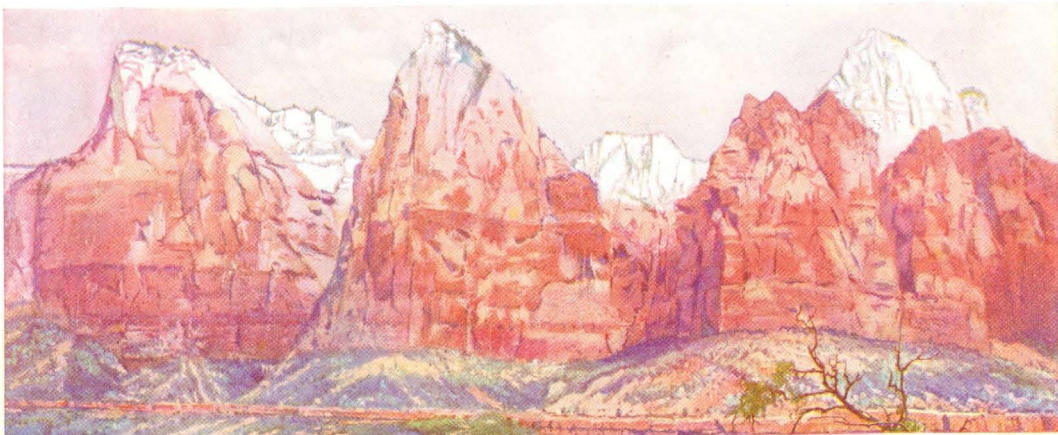
Lv. Cedar City.....	8:30 p. m.	9th day	Monday	Un. Pac. Sys.
Ar. Salt Lake City.....	6:20 a. m.	10th day	Tuesday	"
Headquarters—Hotel Utah				
Lv. Salt Lake City.....	6:15 p. m.	10th day	Tuesday	D. & R. G. W. R. R.
Ar. Colorado Springs.....	4:45 p. m.	11th day	Wednesday	"
Headquarters—Antlers Hotel				
Lv. Colorado Springs.....	12:30 p. m.	12th day	Thursday	"
Ar. Denver.....	2:45 p. m.	12th day	Thursday	"
Headquarters—Cosmopolitan Hotel				
Lv. Denver.....	11:30 p. m.	12th day	Thursday	Un. Pac. Sys.
Ar. Omaha.....	3:25 p. m.	13th day	Friday	"
Lv. Omaha.....	3:45 p. m.	13th day	Friday	C. & N. W. Ry.
Ar. Chicago.....	6:45 a. m.	14th day	Saturday	"

Cost of Complete Tour

FROM CHICAGO, RETURNING TO CHICAGO

	With Rail Ticket	Without Rail Ticket
Two persons occupying a lower berth, each.....	\$198.93	\$137.48
One person occupying a lower berth.....	220.56	159.11
One person occupying an upper berth.....	211.90	150.45
Two persons occupying a compartment, each.....	238.30	176.85
Two persons occupying a drawing room, each.....	253.80	192.35
Three persons occupying a drawing room, each.....	228.30	166.85

Additional compartment and drawing room rates, also rates for incomplete tour on application.
Single rooms available at the Antlers Hotel—additional cost \$2.00.



The Three Patriarchs, Zion National Park



SIXTEEN DAY "YZ" CIRCLE TOUR

Yellowstone—Zion—Grand Canyon—Bryce Canyon—National Parks —Cedar Breaks and Salt Lake City

Four National Parks, each a treasure chest in itself, and in none of which the numerous and glorious attractions duplicate those of another, all can be visited on a sixteen day all-expense escorted "YZ" Circle Tour.

"YZ" Circle Tours leave Chicago every Saturday during the 1930 summer vacation season, from June 21 to September 6. They will take you direct to West Yellowstone, Mont., the Union Pacific's popular gateway to Yellowstone National Park, which is located right at the Park's western entrance—eliminating all unnecessary bus travel.

You go first to Old Faithful with its geysers—next across the continental divide to Lake with its romantic region of sylvan majesty. Then you drive across the short stretch of interesting country to the Grand Canyon of the Yellowstone with its tremendous waterfalls and vividly colored rock walls. And finally, to Mammoth with its many colorful terraces of natural Hot Springs. In all, five days are spent in Yellowstone, seeing *all* of the Park in its natural sequence.

From Yellowstone you travel overnight and part of the next day to Lund, Utah, where you start the six day tour of the Utah-Arizona group of western wonderlands in the luxurious motor busses of the Utah Parks Company.

Zion National Park is the first of Utah's grandeur which you will visit—Zion with its great gorges and its inspiring atmosphere. From Zion to Grand Canyon, those who visit the region this summer will be among the first to motor over the new Mt. Carmel highway—one of the finest and most spectacular pieces of mountain road building in the world.

The Kaibab with its deer and its white-tailed squirrels greets you as you motor through their haunts and before you realize it you step up to the broad windows of the lounge or out onto the veranda of Grand Canyon Lodge—your first breath-taking view of tremendous Grand Canyon.

The riot of color in a profound region of almost unbelievable beauty that is Bryce Canyon, is the major feature of the Utah-Arizona circle—a major feature because of the fact that along the highways on the entire trip through this resplendent region, section after section of the landscape is unusual and spectacular enough in itself to be a magnet for beauty lovers, were it transplanted to other regions less favored with Nature's loveliness.

Cedar Breaks National Monument is visited en route from Bryce to Cedar City where you entrain for an overnight trip to Salt Lake City.

The entire day is spent in Salt Lake City—Headquarters at the Hotel Utah. In the morning you motor over the broad boulevards, visit the Capitol and Mormon Temple Grounds, enjoying the organ recital in the Tabernacle at noon. Motor trip is made to Saltair Beach in the afternoon, returning in time to board your train for Chicago via the Union Pacific and Chicago & North Western Railway historic, scenic "Overland Route."

NOTE: "YZ" Circle Tours traverse the same territory in Yellowstone, Zion, Grand Canyon and Bryce Canyon National Parks as the "YN" and "Z" Circle Tours. For more complete information see pages 8 to 10 and pages, 26 and 27.

"YZ" CIRCLE TOURS

LEAVE CHICAGO AS FOLLOWS:

Tour	Tour	Tour	Tour
YZ-1 Sat., June 21	YZ-4 Sat., July 12	YZ-7 Sat., Aug. 2	YZ-10 Sat., Aug. 23
YZ-2 Sat., June 28	YZ-5 Sat., July 19	YZ-8 Sat., Aug. 9	YZ-11 Sat., Aug. 30
YZ-3 Sat., July 5	YZ-6 Sat., July 26	YZ-9 Sat., Aug. 16	YZ-12 Sat., Sept. 6

Detailed Schedule

Lv. Chicago.....	2:30 p. m.	1st day	Saturday	C. & N. W. Ry.
Ar. Omaha.....	3:20 a. m.	2nd day	Sunday	"
Lv. Omaha.....	3:45 a. m.	2nd day	Sunday	Un. Pac. Sys.
Ar. West Yellowstone.....	2:00 p. m.	3rd day	Monday	"
Lv. West Yellowstone.....	2:30 p. m.	3rd day	Monday	Automobile
Ar. Old Faithful.....	4:57 p. m.	3rd day	Monday	"
Lv. Old Faithful.....	1:50 p. m.	4th day	Tuesday	"
Ar. Lake.....	4:58 p. m.	4th day	Tuesday	"
Lv. Lake.....	10:00 a. m.	5th day	Wednesday	"
Ar. Grand Canyon.....	11:46 a. m.	5th day	Wednesday	"
Lv. Grand Canyon.....	1:35 p. m.	6th day	Thursday	"
Ar. Mammoth Hot Springs.....	4:47 p. m.	6th day	Thursday	"
Lv. Mammoth Hot Springs.....	1:30 p. m.	7th day	Friday	"
Ar. West Yellowstone.....	4:47 p. m.	7th day	Friday	"
Lv. West Yellowstone.....	7:00 p. m.	7th day	Friday	Un. Pac. Sys.
Ar. Lund.....	3:35 p. m.	8th day	Saturday	"
Lv. Lund.....	3:50 p. m.	8th day	Saturday	Automobile
Ar. Zion Lodge.....	7:00 p. m.	8th day	Saturday	"
Lv. Zion Lodge.....	10:30 a. m.	10th day	Monday	"
Ar. Grand Canyon Lodge.....	5:45 p. m.	10th day	Monday	"
Lv. Grand Canyon Lodge.....	8:30 a. m.	12th day	Wednesday	"
Ar. Bryce Canyon Lodge.....	4:30 p. m.	12th day	Wednesday	"
Lv. Bryce Canyon Lodge.....	1:30 p. m.	13th day	Thursday	"
Ar. Cedar Breaks.....	3:15 p. m.	13th day	Thursday	"
Lv. Cedar Breaks.....	4:00 p. m.	13th day	Thursday	"
Ar. Cedar City.....	6:00 p. m.	13th day	Thursday	"
Lv. Cedar City.....	8:30 p. m.	13th day	Thursday	Un. Pac. Sys.
Ar. Salt Lake City.....	6:20 a. m.	14th day	Friday	"
Headquarters—Hotel Utah				
Lv. Salt Lake City.....	5:45 p. m.	14th day	Friday	"
Ar. Omaha.....	8:35 p. m.	15th day	Saturday	"
Lv. Omaha.....	9:00 p. m.	15th day	Saturday	C. & N. W. Ry.
Ar. Chicago.....	9:20 a. m.	16th day	Sunday	"

Cost of Complete Tour

FROM CHICAGO, RETURNING TO CHICAGO

	With Rail Ticket	Without Rail Ticket
Two persons occupying a lower berth, each.....	\$226.10	\$160.45
One person occupying a lower berth.....	246.54	180.89
One person occupying an upper berth.....	238.35	172.70
Two persons occupying a compartment, each.....	263.40	197.75
Two persons occupying a drawing room, each.....	277.65	212.00
Three persons occupying a drawing room, each.....	253.65	188.00

Additional drawing room and compartment rates, also rates for incomplete tour on application.

Above rates based on the "Lodge Way" through Yellowstone. Rates via Hotels \$8.50 higher.



Yosemite Falls, Almost a Half Mile High. Always Sublime, and Often Its Reverberations Are Heard Throughout the Valley



Glenwood Mission Inn, Riverside, California



TWENTY DAY "C" CIRCLE TOUR

California—Yosemite National Park—Lake Tahoe

Everyone who can goes to California. Her rare combination of tropical verdure and snow-capped mountains, venerable missions and ultra-modern mansions, her resorts and gay beaches, harbors and heights, her Hollywood, have given California an enviable reputation as a year-round vacationland.

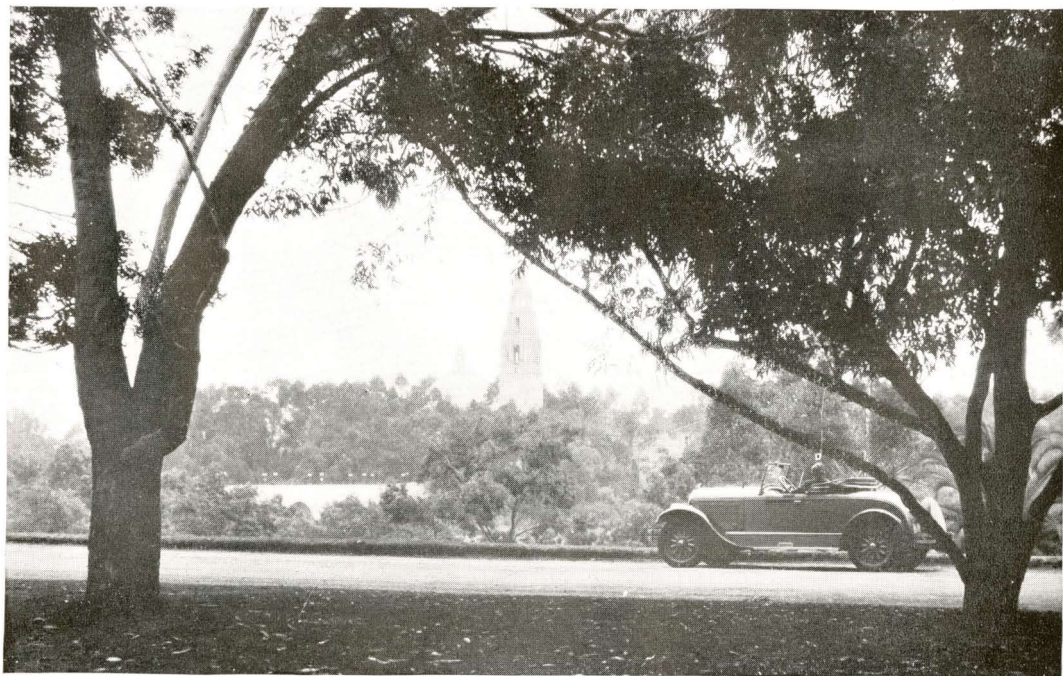
Five escorted all-expense "C" Circle tours will be operated by the Department of Tours of the Chicago & North Western Ry.—Union Pacific System during the 1930 summer season. They include the major attractions for which California is noted and, as well, give you several days of leisure to go-as-you-please.

On "C" Circle tours you may elect to stop at California's finest, de luxe hotels or you may choose to stop at the excellent, but more modest, hotels. You can go either way—see detail schedule. On the "A" schedule of "C" Circle tours such hotels as the Los Angeles Biltmore and the Ahwahnee Hotel in Yosemite are used. On the "B" schedule, such hotels as the Alexandria in Los Angeles and the delightful lodges at Camp Curry in Yosemite are included. All meals and room with bath furnished everywhere on both the "A" and "B" tours.

Day by day synopsis of the trip

SATURDAY—

The train selected for your trip across the country to California is the luxurious Los Angeles Limited, the finest and fastest train to Southern California on the Overland Route. You



The Tower of Jewels in Balboa Park, San Diego

leave Chicago at 8:10 P.M. via the Chicago & North Western Railway, using this pioneer western road as far as Omaha, Nebraska, continuing on from there to Riverside over the Union Pacific's matchless roadbed.

SUNDAY—

All day—swiftly, surely, and surrounded by every travel luxury you follow the direct route traversed in the historic past by the covered wagons, stage coaches and the pony express and the course followed today by the air-mail planes.

MONDAY—

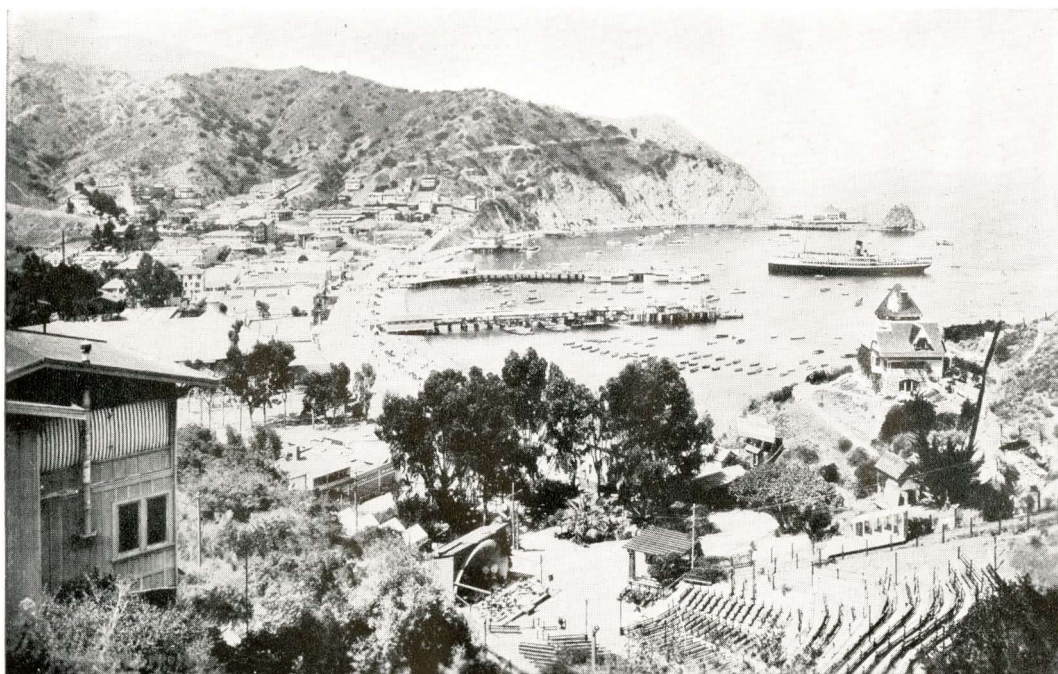
In the morning you will enjoy beautiful Weber Canyon through which you pass. After a short stop in Ogden and in Salt Lake City, you skirt the shores of Great Salt Lake and speed across the great western open spaces that separate the Wasatch Mountains of Utah from the Pacific Coast mountain ranges.

TUESDAY—

Early this morning you arrive at Riverside, California. After luncheon a trip is made by motor to Mt. Rubidoux and the whole party then returns to the Glenwood Mission Inn. A guide will take you through the cloisters, Spanish Art Gallery, museum, gallery of the bells and other interesting places and dinner will be served in the delightful patio. You will remain over night at Riverside.

WEDNESDAY—

Comfortable parlor car motor busses call for you shortly after breakfast and you motor to San Diego, viewing en route the University of California Citrus Experimental Farm, Lake Elsinore, Temecula Valley, large olive orchards and Camp Kearney, arriving at your hotel at noon time. In the afternoon you continue on to Tia Juana and Agua Caliente, Mexico, via Coronado and the Silver Strand, returning through Balboa Park and the residential sections of San Diego.



Beautiful Avalon Bay—Catalina Island

THURSDAY—

From San Diego the morning's ride takes you past the Marine Barracks, Naval Training Station and Aviation Field to Inspiration Point on Point Loma—then to Sunset Cliffs and La Jolla, through Torrey Pines Park to Carlsbad, stopping for luncheon at Red Apple Inn. You then travel over "El Camino Real," the King's Highway, to San Juan Capistrano, stopping long enough to visit the old mission. After passing through Santa Ana and Long Beach you reach Los Angeles about five o'clock.

FRIDAY—

A leisurely drive unfolds for you the charm that is suburban Los Angeles. After visiting Gay's Lion Farm and the magnificent residential sections of Pasadena, luncheon is served at the Maryland Hotel. In the afternoon you pass through Hollywood, famed for its motion picture colonies, Beverly Hills with its beautiful homes and then on to the beach cities for which Southern California is noted—Santa Monica, Venice and Ocean Park.

SATURDAY—

An ocean trip to Santa Catalina occupies the day. At Catalina, the little town of Avalon, clutching the steep slopes of the island, is one of the most famous resorts along the Pacific Coast. After luncheon at Hotel St. Catherine you view the wonderful submarine gardens from glass-bottom boats, visit the many quaint shops and curio stores, then board the steamer for return trip to Los Angeles.

SUNDAY and MONDAY—

Two full days are yours to enjoy as you will. On Sunday many will wish to attend church services or visit with friends. The many attractive stores and public buildings will prove interesting on Monday. You leave Los Angeles at 6:10 P.M. on Monday for an overnight trip by train to Yosemite National Park.



Los Angeles is Noted for the Charm of its Residential Districts

TUESDAY—

At El Portal, gateway to Yosemite, you leave the Pullmans and motor to Yosemite Valley, arriving at 10:45 A.M. A delightful tour of the floor of the valley is arranged for the afternoon, on which you will view Yosemite Falls, Mirror Lake, Half Dome, Happy Isles, Camp Curry, Sentinel Rock, El Capitan and Bridal Veil Falls. In the evening the celebrated "fire fall" will thrill you.

WEDNESDAY—

A magnificent drive from the floor of the valley to the majestic heights which dominate it starts your trip to the Mariposa Grove of Big Trees. Your busses make a complete tour of this region, stopping at Wawona for luncheon.

THURSDAY—

The day is left open. You may choose to ride, hike, swim or just rest. Many trips are available. After dinner you leave the Park for El Portal where you entrain for San Francisco.

FRIDAY—

San Francisco. In the afternoon you will enjoy the "Thirty Mile Drive" which includes the Presidio, Marine Drive, Golden Gate Park, Seal Rocks and Twin Peaks.

SATURDAY—

This morning you motor to Palo Alto, visiting Leland Stanford University, returning through San Mateo, Burlingame and other beautiful suburban San Francisco communities.

SUNDAY—

A day of rest.



From San Francisco's Hills Across the Bay to Oakland, Calif.

MONDAY—

The morning is left open for shopping, etc. You will be fascinated by the oriental bazaars within walking distance of the hotel. In the afternoon you drive through the fascinating cities across the bay—Oakland, Berkeley and Piedmont—visiting the University of California campus and Lake Merritt. After dinner at the palatial Oakland Hotel, train leaves Oakland for Lake Tahoe, the last stop on the tour.

TUESDAY—

You spend the entire day at beautiful Lake Tahoe whose lovely setting has made it a most popular vacation resort. During the day you enjoy an enchanting trip around the lake by boat and in the evening you once more step aboard the train—this time for the return trip to Chicago and the East.

WEDNESDAY—

At Ogden, Utah, those who have planned to visit Yellowstone will leave the train and join the Yellowstone tour party here.

THURSDAY—

En route via the "Overland Route," the same superior service which has characterized your train travel throughout prevails.

FRIDAY—

You arrive in Chicago at 9:15 A.M. on the San Francisco Limited, the de luxe non-extra fare train on which you have traveled from Lake Tahoe.

"C" CIRCLE TOURS

LEAVE CHICAGO AS FOLLOWS:

C-3 Sat., June 21 C-4 Sat., July 5 C-5 Sat., July 19
C-6 Sat., Aug. 2 C-7 Sat., Aug. 16

Detailed Schedule

Lv. Chicago.....	8:10 p. m.		Saturday	C. & N. W. Ry.
Ar. Omaha.....	8:20 a. m.	1st day	Sunday	"
Lv. Omaha.....	8:45 a. m.	1st day	Sunday	Un. Pac. Sys.
Lv. Lund.....	5:34 p. m.	2nd day	Monday	"
Tours arranged to connect with "Z" Circle Tours at Lund.				
Ar. Riverside.....	7:10 a. m.	3rd day	Tuesday	"
Headquarters—(A) Glenwood Mission Inn—(B) Hotel Reynolds				
Lv. Riverside.....	8:00 a. m.	4th day	Wednesday	Automobile
Ar. San Diego.....	12:30 p. m.	4th day	Wednesday	"
Headquarters—(A) El Cortez Hotel—(B) San Diego Hotel				
Lv. San Diego.....	8:00 a. m.	5th day	Thursday	"
Ar. Los Angeles.....	5:30 p. m.	5th day	Thursday	"
Headquarters—(A) Biltmore Hotel—(B) Alexandria Hotel.				
Connects with Los Angeles Steamship Co. sailing for Honolulu				
Lv. Los Angeles.....	6:10 p. m.	9th day	Monday	So. Pac. Ry.
Ar. El Portal.....	9:55 a. m.	10th day	Tuesday	Y. V. R. R.
Lv. El Portal.....	10:00 a. m.	10th day	Tuesday	Automobile
Ar. Yosemite Valley.....	10:45 a. m.	10th day	Tuesday	"
Headquarters—(A) Ahwahnee Hotel—(B) Camp Curry				
Lv. Yosemite Valley.....	8:00 p. m.	12th day	Thursday	"
Ar. El Portal.....	8:45 p. m.	12th day	Thursday	"
Lv. El Portal.....	9:00 p. m.	12th day	Thursday	Y. V. R. R.
Ar. San Francisco.....	8:10 a. m.	13th day	Friday	So. Pac. Ry.
Headquarters—(A) Fairmont Hotel—(B) Cliff Hotel				
Connects with Matson Navigation Co., sailing for Honolulu				
Lv. Oakland.....	9:40 p. m.	16th day	Monday	So. Pac. Ry.
Ar. Tahoe.....	8:00 a. m.	17th day	Tuesday	"
Lv. Tahoe.....	9:00 p. m.	17th day	Tuesday	"
Ar. Ogden.....	5:30 p. m.	18th day	Wednesday	"
Note—Connect with "Y" and "YR" Circle Tours				
Lv. Ogden.....	6:55 p. m.	18th day	Wednesday	Un. Pac. Sys.
Ar. Omaha.....	8:25 p. m.	19th day	Thursday	"
Lv. Omaha.....	8:45 p. m.	19th day	Thursday	C. & N. W. Ry.
Ar. Chicago.....	9:15 a. m.	20th day	Friday	"

Cost of Complete Tour

	(B) Type Hotels		(A) Type Hotels	
	With Rail Ticket	Without Rail Ticket	With Rail Ticket	Without Rail Ticket
FROM CHICAGO, RETURNING TO CHICAGO				
Two persons occupying a lower berth, each..	\$275.62	\$185.32	\$312.67	\$222.37
One person occupying a lower berth.....	304.31	214.01	341.36	251.06
One person occupying an upper berth.....	292.83	202.53	329.88	239.58
Two persons occupying a compartment, each..	327.93	237.63	364.98	274.68
Two persons occupying a drawing room, each.	348.93	258.63	385.98	295.68
Three persons occupying a drawing room, each	314.93	224.63	351.98	261.68

Additional compartment and drawing room rates, also rates for incomplete tour on application.

The rates shown above are based on double rooms with bath at all hotels, single rooms with bath may be obtained at an additional cost of \$10.00 per passenger at (B) Type Hotels and \$20.00 per passenger at (A) Type Hotels, providing such request is made at time of booking.



Waikiki Beach is Famous for its Year-round Bathing Delights

HAWAII

Isles of golden perfection

In connection with our all-expense California tours operated during the summer season all inclusive tours to Hawaii have been arranged. These are most ideal trips, combining rail and water travel, and for which the finest of Trans-Pacific steamers will be used.

Hawaii, an integral part of the United States, of which it is the all important western outpost, is a magnificent semi-tropical territory comprising four main islands and four of lesser importance, with a total population of about 325,000 people representing over thirty different races or race combinations.

The four chief islands, from the northwest to the southeast, are Kauai, Oahu on which Honolulu is situated, Maui, and Hawaii, the latter usually termed the Big Island, with its chief port of Hilo and the world famous Kilauea Volcano. In addition, and but sparsely populated, are the islands of Molokai, Lanai, Niihau, and Kahoolawe.

Interesting as is Honolulu with her colorful mixture of Occident and Orient, and fascinating as is Waikiki Beach with its world renowned thrills of surf-boarding and surf-canoeing and its year 'round bathing delights, these present but a small part of this beautiful land.

A vivid, wistful land, swathed in a cloak of semi-tropic coloring of flowers and foliage, yet perpetually fanned by gentle trade winds which give a spring-like climate the year 'round, the islands offer a rich panorama of ever-changing vistas.

From Christmas to July the climate of the valleys varies less than thirty degrees, while, despite this equable climate in the centers of population, one may find almost any desired temperature by ascending the foothills and mountains which tower to an altitude of 13,000 feet.

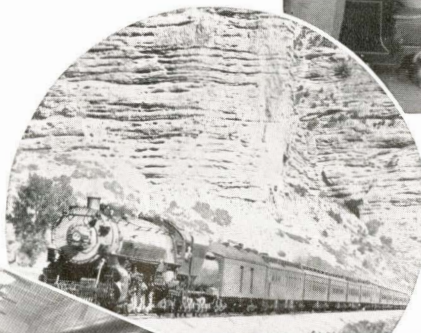
Here, if anywhere in the modern world, is that Earthly Paradise for which mankind has sought through countless generations. Every comfort and convenience of the American mainland is available. In contrast, however, the visitor will find on every hand the picturesque romantic life of old Hawaii and the more astounding contrasts of the island inhabitants, gathered into a gigantic melting pot where East meets West and blends in life, customs, and thought. Rate \$336.00 and up depending on ship and accommodations selected.

Ask for complete information regarding these all inclusive tours to Hawaii.

YOU TRAVEL BY TRAIN

On all "Overland Route" Circle tours you travel quickly, quietly, comfortably, on the finest of transcontinental trains, surrounded by every travel luxury and in an atmosphere of refinement that is most refreshing.

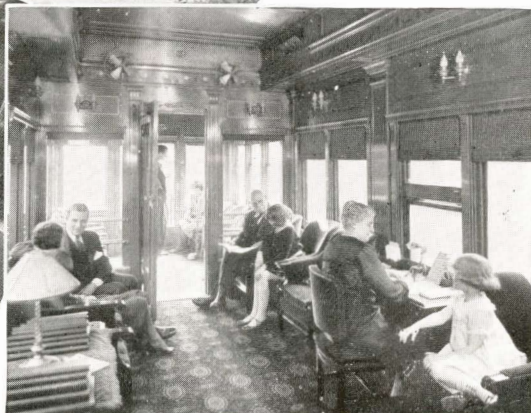
The "Overland Route," Road of Romance to All the West, serves directly fourteen of our National Parks.



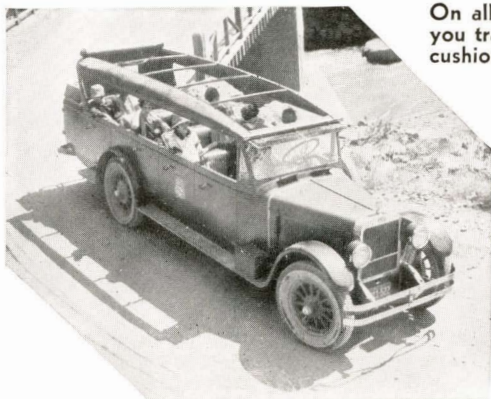
"Overland Route" club, lounge and observation cars provide "the Best of Everything" for your comfort and pleasure en route.



Excellent dining car meals are a famed feature of all "Overland Route" Circle Tours. Order what you wish—simply sign your check.



—AND, BY DE LUXE MOTOR BUS



On all motor trips, you travel in deep-cushioned comfort.



GENERAL INFORMATION

"Overland Route" Circle Tours offer you "The Best of the West," at the least possible cost and are planned with every care for your comfort, convenience and pleasure. An experienced escort accompanies the party at all times and relieves you of every travel detail.

Go via the "Overland Route" and make the most of your vacation this summer.

Tour Costs Are All-Inclusive

The all-expense cost of all "Overland Route" Circle Tours includes every necessary item of expense incident to the trip. There are no extras, except individual tips, which are considered purely personal.

Women Traveling Alone

If a woman is hesitant about traveling alone, our escorted tours offer the opportunity to bridge this difficulty. Our escort will introduce her to other members of the party and insure her a pleasant trip without vexation or annoyance. Hundreds of women, as individuals, have thus taken advantage of our escorted tours.

Dining Car Service

In our spacious dining cars excellent meals tastily prepared and served with a smile, comparable with the best metropolitan hotel standards, add pleasure to your trip. You are at liberty to select whatever you wish and simply sign your check as service is unrestricted.

Hotels and Lodges

In Yellowstone you have the choice of two types of accommodations, the rustic lodges or the hotels. The rates via the hotels are based on minimum accommodations. Rooms with bath are usually available at an additional charge of \$2.00 to \$4.50 per day per person.

In the Utah-Arizona Parks the popular rustic cabins are used and rates are based on minimum accommodations. De Luxe Cabins with bath are available, if arranged in advance, at an additional charge of \$2.25 to \$6.00 per day per person according to type and location.

In Rocky Mountain National Park rooms with bath are available at an additional charge of \$1.00 to \$2.00 per day per person.

In all National Parks, Hotels and Lodges are under the jurisdiction of the National Park Service, Department of the Interior, who require that all visitors to the Parks must be accommodated. Consequently, single rooms are not always available.

Rates quoted herein on California Tours are based on double rooms with bath at all hotels. Single rooms may be obtained at slightly increased rates if requested at time of making reservation.

Personal Service

Every representative of the Department of Tours, the Chicago & North Western Railway and the Union Pacific System, each a travel expert, is prepared to assist you in every way—supplying detailed information, making reservations and booking passengers for the tours. If you desire a representative will call to assist with your travel plans.

Service by Correspondence

With an intelligent understanding of the problems confronting persons wishing to secure the greatest benefits of a Western vacation trip, the Department of Tours is prepared to render a real service to those making inquiries by mail. You may feel free to write fully and ask any questions whatsoever in connection with any phase of western travel.

How to Join Our Tours

Persons desiring to join an "Overland Route" Circle Tour should send their names to be registered as early as possible, stating Pullman space required. Simply fill in the reservation blank on page 47, being particular to supply all the information requested thereon. Reservations will then be made. Remittance should be made not later than ten days before departure of tour, but when this is inconvenient, we will upon request, hold reservations longer. Persons prevented from going may secure refund in full, provided reservations be canceled before 1:00 p.m. on date of departure.

Purchase Railroad Ticket at Your Home Station

Passengers coming from points other than Chicago may join our tours at Chicago or at any regular stopping point enroute. To obtain full benefit of the low round-trip summer tourist railroad fare, railroad tickets should be purchased from home station, reading via the route of the tour, as follows:

"YN" CIRCLE TOUR:—Destination West Yellowstone, Mont. Routing—any direct line to Chicago, thence C. & N. W. Ry. to Council Bluffs, Un. Pac. Sys. to West Yellowstone. Returning—Un. Pac. Sys. to Council Bluffs, C. & N. W. Ry. to Chicago, and any direct line to home station.

"YRG" CIRCLE TOURS:—Destination West Yellowstone, Mont. Routing—any direct line to Chicago, thence C. & N. W. Ry. to Council Bluffs, Un. Pac. Sys. to West Yellowstone. Returning—Un. Pac. Sys. to Ogden, D. & R. G. W. Ry. to Denver, Un. Pac. Sys. to Council Bluffs, C. & N. W. Ry. to Chicago, and any direct line to home station.

"YR" CIRCLE TOUR:—Destination West Yellowstone, Mont. Routing—any direct line to Chicago, thence C. & N. W. Ry. to Council Bluffs, Un. Pac. Sys. to West Yellowstone. Returning—Un. Pac. Sys. to Council Bluffs, C. & N. W. Ry. to Chicago, and any direct line to home station.

"Y" CIRCLE TOUR:—Destination West Yellowstone, Mont. Routing—any direct line to Chicago, thence C. & N. W. Ry. to Council Bluffs, Un. Pac. Sys. to West Yellowstone. Returning—Un. Pac. Sys. to Council Bluffs, C. & N. W. Ry. to Chicago, and any direct line to home station. NOTE:—Side-trip reading via Colo. & Sou. Ry. from Denver to Colorado Springs and return should be included in ticket.

"Z" CIRCLE TOUR:—Destination Cedar City, Utah. Routing—any direct line to Chicago, thence C. & N. W. Ry. to Council Bluffs, Un. Pac. Sys. to Cedar City. Returning—Un. Pac. Sys. to Salt Lake City, D. & R. G. W. Ry. to Denver, Un. Pac. Sys. to Council Bluffs, C. & N. W. Ry. to Chicago, and any direct line to home station.

"YZ" CIRCLE TOUR:—Destination West Yellowstone, Mont.—Cedar City, Utah. Routing—any direct line to Chicago, thence C. & N. W. Ry. to Council Bluffs, Un. Pac. Sys. to West Yellowstone, Un. Pac. to Cedar City. Returning—Un. Pac. Sys. to Council Bluffs, C. & N. W. Ry. to Chicago, thence any direct line to home station.

"C" CIRCLE TOUR:—Destination San Francisco, Calif. Routing—any direct line to Chicago, thence C. & N. W. Ry. to Council Bluffs, Un. Pac. Sys. to Los Angeles, Sou. Pac. Lines to San Francisco. Returning—Sou. Pac. Lines to Ogden, Un. Pac. Sys. to Council Bluffs, C. & N. W. Ry. to Chicago, thence any direct line to home station.

TICKETS AGENTS PLEASE NOTE

Do not issue coupons covering tour of Yellowstone, Zion, Bryce, Grand Canyon, Rocky Mountain or Yosemite National Parks; also, coupons covering side-trip Merced to Yosemite (El Portal) or Truckee to Lake Tahoe as these items are all included in tour privileges of the all-expense tour rate. Remittance covering tour privileges, shown under column headed "without rail ticket" for the various tours may be made by prepaid or exchange order drawn on Chicago & North Western Railway, Chicago, forwarding same to office through whom reservation is secured.

Wearing Apparel and Baggage

Warm summer days suggest summer light weight clothing, yet the cool, invigorating nights in the mountains make medium weight wraps necessary—top coats, sweaters, weather-proof outer garments. Outing clothes; knickers, jackets, stout shoes or boots are a comfort. A pair of colored glasses will be invaluable.

Trunks are unnecessary. A suit case or bag will hold sufficient clothing for the entire trip and extra baggage will be a burden.

In the National Parks, the free allowance of baggage carried by the automobiles is one piece weighing twenty-five pounds. You may carry a small overnight bag with you, in addition to this.

Mail and Telegrams

Mail and telegrams should be addressed to the various hotels shown in the itinerary. Specify, "Member of C. & N. W.—Un. Pac. Overland Route Tour Y-1," "Z-1," or whatever the particular designating letter and number may be.

Perhaps You Prefer to "Go It Alone"

... possibly you may wish to spend a great deal more time in some one region or in several regions, or you may wish to organize your own group, or for various other reasons you may wish to forego the benefits of our "Overland Route" all-expense, escorted tours in your vacation plans.

Whatever your travel needs and wishes may be, call on any of our representatives listed below or on page 46 or write J. L. Burgar, Manager, Department of Tours, 148 S. Clark St., Chicago, Ill., and your inquiry will receive immediate and careful attention.

NOTE

Rates and train schedules quoted herein are subject to such change as tariff or operating requirements, which cannot be foreseen at time of issuance of this publication, may later demand.

DEPARTMENT OF TOURS

OF THE

CHICAGO & NORTH WESTERN RY.—UNION PACIFIC SYSTEM

No other western railroad has employed for thirty years a staff of travel experts who spend their entire time in arranging attractive vacation tours that provide—

"The Best of Everything"

ADDRESS ALL COMMUNICATIONS TO

J. L. BURGAR, Manager
148 South Clark Street, Chicago, Ill.

DEPARTMENT OF TOURS REPRESENTATIVES

CHICAGO, ILL. . . . 148 S. Clark Street . . . Tel. Dearborn 2121

C. E. Burgess, Chicago Representative

C. E. Frain, Traveling Agent

Thomas Clift, City Passenger Agent

R. N. Anderson, City Passenger Agent

W. L. Kohn, Traveling Agent

H. F. Williams, Traveling Agent

I. D. Kessler, Traveling Agent

CINCINNATI, OHIO.....	202 Dixie Terminal Bldg.....	C. W. Jackson, Traveling Agent
CLEVELAND, OHIO.....	939 Union Trust Bldg.....	H. M. Back, Traveling Agent
DETROIT, MICH.....	619 Transportation Bldg.....	H. P. Dickson, Traveling Agent
INDIANAPOLIS, IND.....	308 Merchants Bank Bldg.....	A. L. Riddle, Traveling Agent
LOS ANGELES, CAL.....	732 South Broadway.....	V. J. Schmittroth, Cal. Representative
MILWAUKEE, WIS.....	99 E. Wisconsin Ave.....	Joseph Muller, Traveling Agent
PHILADELPHIA, PA.....	201 Franklin Trust Bldg.....	O. H. Romadka, Traveling Agent
PITTSBURGH, PA.....	212 Oliver Bldg.....	A. J. Keating, Traveling Agent

Ticket and Information Offices

Chicago & North Western Ry.

ATLANTA, GA.—317 Healey Bldg.
J. H. Schultz, General Agent.
BOSTON, MASS.—310 Old South Bldg.
C. W. Gray, General Agent.
BUFFALO, N. Y.—202 Ellicott Sq.
J. P. Fox, General Agent.
W. H. Kreiling, Traveling Agent.
A. R. Carlson, Traveling Agent.
J. F. Swartout, City Agent.
CHICAGO, ILL.—148 S. Clark St.
H. G. Van Winkle, G. A. Pass. Dept.
N. M. Kean, City Agent.
E. E. Bogardus, City Agent.
W. W. Pontious, City Agent.
W. Evans, City Agent.
R. H. Klank, City Agent.
CINCINNATI, O.—702 Dixie Terminal Bldg.
G. L. Helmstadter, General Agent.
A. M. Linz, Traveling Agent.
J. T. Hall, Traveling Agent.
L. A. Uvaas, Traveling Agent.
E. A. Knauber, City Agent.
CLEVELAND, O.—939 Union Tr. Bldg.
H. E. Saunby, General Agent.
S. L. Howells, Traveling Agent.
R. C. Roberts, Traveling Agent.
L. J. Jensen, City Agent.
W. L. Foutts, City Agent.
DES MOINES, IA.—Chamberlain Hotel.
W. F. Winkrantz, General Agent.
D. C. Mead, City Agent.
DETROIT, MICH.—619 Trans. Bldg.
R. H. Miller, General Agent.
F. J. Herhusky, Traveling Agent.
W. F. Schlicht, Traveling Agent.
W. W. Creighton, Traveling Agent.
E. A. Wicke, Traveling Agent.
S. Nelson, Jr., City Agent.
L. J. Bozman, City Agent.
DULUTH, MINN.—Spalding Hotel.
J. D. Mahon, General Agent.
GREEN BAY, WIS.
T. A. Carney, D. F. & P. A.
INDIANAPOLIS, IND.—308 Mer. Bk. Bldg.
V. A. Hampton, General Agent.
G. H. Dumas, Traveling Agent.
R. L. Dickson, Traveling Agent.
S. M. Smith, City Agent.
MADISON, WIS.
A. W. Bower, D. F. & P. A.
MILWAUKEE, WIS.—99 E. Wisconsin Ave.
E. P. Rueter, G. A. Pass. Dept.
Carl Carlson, City Agent.
F. E. Reuter, City Agent.
MINNEAPOLIS, MINN.—701 Marquette Ave.
F. A. Brown, Gen. Pass. Agent.
NEW ORLEANS, LA.—1215 Hibernia Bldg.
C. S. Evenson, General Agent.
NEW YORK, N. Y.—475 Fifth Ave.
F. G. FitzPatrick, General Agent.
PEORIA, ILL.—213 Jefferson Bldg.
F. B. Martin, D. F. & P. A.
R. E. Williams, Traveling Agent.
W. J. Kessler, City Agent.
PHILADELPHIA, PA.—201 Franklin Tr. Bldg.
C. N. Hale, General Agent.
T. J. Coen, Traveling Agent.
C. A. Miller, Traveling Agent.
J. G. Thomas, Traveling Agent.
C. E. Anderson, City Agent.
PITTSBURGH, PA.—212 Oliver Bldg.
J. J. Livingston, General Agent.
E. W. Fiala, Traveling Agent.
R. W. Phelps, Traveling Agent.
E. A. Kempfer, City Agent.
ST. LOUIS, MO.—401 Boatmen's Bk. Bldg.
H. L. Hammill, General Agent.
H. A. Hancock, Traveling Agent.
E. C. Crow, Traveling Agent.
G. L. Moline, City Agent.
ST. PAUL, MINN.—81 East 5th Street.
G. H. Feyder, Ass't Gen. Pass. Agent.
SIOUX CITY, IA.—522 Nebraska St.
L. J. Nickelsen, General Agent.
C. A. CAIRNS
Passenger Traffic Manager
Chicago, Ill.
A. R. GOULD
Assistant Pass. Traf. Mgr.
Chicago, Ill.
R. THOMSON
Assistant Pass. Traf. Mgr.
Chicago, Ill.
M. R. LEAHY
General Passenger Agent
Chicago, Ill.

Union Pacific System

ATLANTA, GA.—1232 Healey Bldg.
W. C. Elgin, General Agent.
BIRMINGHAM, ALA.—301 Protective Life Bldg.
J. H. Dougherty, General Agent.
BOSTON, MASS.—207-08 Old South Bldg.
Willard Massey, General Agent.
CHICAGO, ILL.—6 S. La Salle St.
G. R. Lemmer, G. A. Pass. Dept.
William Warner, City Pass. Agent.
John Pollock, City Passenger Agent.
E. E. Robertson, Trav. Pass. Agent.
H. G. Larimer, Traveling Pass. Agent.
W. W. Witte, City Ticket Agent.
C. V. Wedell, Passenger Agent.
CINCINNATI, O.—705 Dixie Terminal Bldg.
W. H. Connor, General Agent.
J. Stanley Orr, District Pass. Agent.
Wm. Hetherington, Trav. Pass. Agent.
F. G. Busch, T. F. and Pass. Agent.
J. R. Livsey, T. F. and Pass. Agent.
W. A. Looney, City Pass. Agent.
CLEVELAND, O.—941 Union Tr. Bldg.
W. H. Benham, General Agent.
R. E. Burt, Trav. Pass. Agent.
Edwin H. Allen, F. T. and Pass. Agent.
C. J. Stegeman, T. F. and Pass. Agent.
A. G. Herberster, City Passenger Agent.
DES MOINES, IA.—407 Equitable Bldg.
Fred P. Stafford, General Agent.
V. C. Kuhne, Trav. Pass. Agent.
R. L. Henry, T. F. and Pass. Agent.
DETROIT, MICH.—508 Trans. Bldg.
A. R. Malcolm, General Agent.
L. G. Meder, City Passenger Agent.
J. G. Howey, T. F. and Pass. Agent.
W. W. Hott, Trav. Frt. & Pass. Agent.
A. J. Eckerle, Passenger Agent.
KANSAS CITY, MO.—805 Walnut Street.
Seth C. Rhodes, G. A. Pass. Dept.
H. K. Proudft, Trav. Pass. Agent.
O. D. Crofut, Trav. Pass. Agent.
E. M. Mattes, City Passenger Agent.
G. B. Crippen, City Pass. Agent.
C. F. Hallsman, City Ticket Agent.
MILWAUKEE, WIS.—703 Straus Bldg.
K. T. Mindemann, General Agent.
G. J. Buckingham, Trav. Pass. Agent.
C. C. Crouse, City Passenger Agent.
MINNEAPOLIS, MINN.—618 Met. Life Bldg.
E. H. Hawley, General Agent.
A. J. Wintersteen, City Pass. Agent.
NEW ORLEANS, LA.—1001 New Orleans Bank Bldg.
G. J. Garmon, General Agent.
NEW YORK, N. Y.—City Passenger Office, 475 Fifth Ave.
H. A. Lawrence, G. A. Pass. Dept.
OMAHA, NEB.—1523 Farnam St.
L. Beindorff, G. A. Pass. Dept.
A. K. Curtis, City Passenger Agent.
F. E. Watkins, Trav. Pass. Agent.
E. C. Mallon, Trav. Pass. Agent.
PHILADELPHIA, PA.—508 Com. Tr. Bldg.
H. L. Lauby, General Agent.
Gordon G. Noble, T. F. & Pass. Agent.
J. M. T. Fritz, T. F. & Pass. Agent.
J. L. Brechin, T. F. & Pass. Agent.
L. R. Tipke, City Passenger Agent.
PITTSBURGH, PA.—216 Oliver Bldg.
John D. Carter, General Agent.
Edward Emery, Dist. Pass. Agent.
G. O. Hassenfritz, T. F. & Pass. Agent.
Gaylord F. Allen, T. F. & Pass. Agent.
Gregg W. Cook, City Pass. Agent.
ST. LOUIS, MO.—203 Carleton Bldg.
J. L. Carney, General Agent.
J. M. Rebmman, Trav. Pass. Agent.
J. J. McCarthy, City Pass. Agent.
TORONTO, ONT.—69 Yonge St.
Geo. W. Vaux, General Agent.
W. S. BASINGER
Passenger Traffic Manager
Omaha, Neb.
C. J. COLLINS
Gen'l Pass. Agent
Omaha, Neb.
W. K. CUNDIFF
Gen'l Pass. Agent
Portland, Ore.
D. S. SPENCER
Gen'l Pass. Agent
Salt Lake City, Utah.
G. R. BIERMAN
Gen'l Pass. Agent
Los Angeles, Calif.

Chicago & North Western Ry.

Page Forty-six

Union Pacific System

A. 505-30-50M

DEPARTMENT OF TOURS

Chicago & North Western Ry.—Union Pacific System
148 South Clark St., Chicago, Ill.
APPLICATION FOR RESERVATION

.....

..... City Date

.....

Dear Sir:

Parties listed below wish to join Tour indicated. Leaving Chicago..... Date

Y	YR	YRG	YN	YZ	Z	C	
---	----	-----	----	----	---	---	--

(Insert tour number)

NAME	STREET ADDRESS	CITY	STATE
.....
.....
.....
.....
.....

Names and ages of any minors listed above.....

.....

Will require Pullman space as indicated: (Show number of berths desired)

☐ Lower berth
 ☐ Upper berth
 ☐ Section
 ☐ Compartment
 ☐ Drawing room
☐ Hotels
 In Yellowstone Park
 ☐ Lodges
 In California
 ☐ "A" Type Hotels
☐ "B" Type Hotels

(When two or more in party state how members wish to be assigned to Pullman and hotel or lodge accommodations).....

.....

.....

Will make complete tour.....

(Yes or No. If "No," State After Remarks Your Plans)

Remarks:.....

.....

Complete Information Will Gladly Be Furnished for Any Independent Trip West

Indicate points you wish to visit and approximate leaving date.....

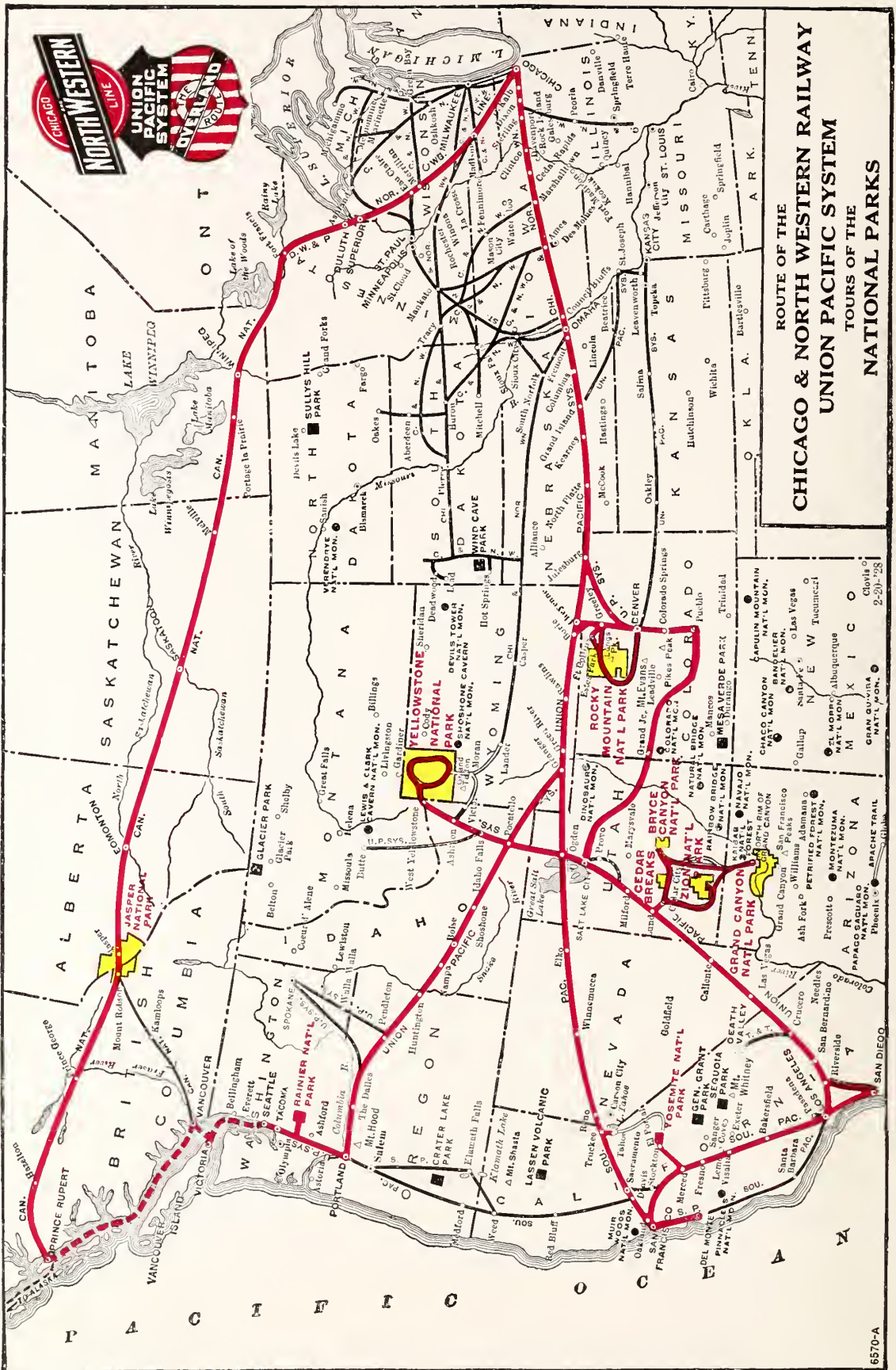
.....

.....

Name.....

Address..... City..... State.....

Detach and mail to any representative listed herein or to J. L. Bugar, Mgr., Dept. of Tours, 148 S. Clark St., Chicago, Ill.



**ROUTE OF THE
CHICAGO & NORTH WESTERN RAILWAY
UNION PACIFIC SYSTEM
TOURS OF THE
NATIONAL PARKS**

SUMMER TOURS

Under Escort



SEASON 1930

DEPARTMENT OF TOURS
CHICAGO & NORTH WESTERN RY.
UNION PACIFIC SYSTEM

