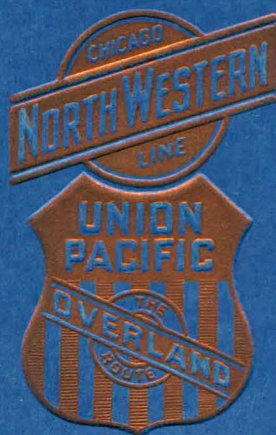


# SUMMER TOURS

*Under Escort*



YELLOWSTONE NATIONAL PARK  
ROCKY MOUNTAIN  
NATIONAL PARK

ZION NATIONAL PARK  
BRYCE CANYON - GRAND CANYON  
CALIFORNIA







# SUMMER TOURS

UNDER ESCORT

YELLOWSTONE NATIONAL PARK  
ROCKY MOUNTAIN  
NATIONAL PARK

ZION NATIONAL PARK  
BRYCE CANYON • GRAND CANYON

CALIFORNIA



COPYRIGHT 1927 BY  
J. L. BURGAR  
MANAGER  
DEPARTMENT OF TOURS  
CHICAGO & NORTH WESTERN RY.  
UNION PACIFIC SYSTEM  
CHICAGO



## The National Parks Belong To All The People



THE National Park Service invites each and every American to visit the national parks. These areas belong to the people, and every effort is made to make them accessible and comfortable for visitors. They are not only ideal rest and recreation areas, but also museums of nature wherein the plants and animals, the interesting geological formations, and other phases of nature, may be studied and enjoyed. No matter how long or short your vacation, you will find every minute of it worth while if spent in the Yellowstone or one of the other national parks. And the memories you will take back with you, of majestic scenery, of stately deer and other animals in their native habitat, and of friends made, from the east and the west, the north and the south, will be something of value that can never be taken from you.

*Stephen T. Mather*

*Director, National Park Service,  
Department of the Interior.*

*See America First—and the National Parks First of All*



## Contents

Foreword.....	5
Yellowstone—Rocky Mountain National Parks	
Y-Tours.....	6 to 19
Zion and Grand Canyon National Parks	
Z-Tours .....	20 to 33
California (including Yosemite National Park)	
C-Tours.....	34 to 40
Combination Tours .....	41
General Information.....	42 to 45





*Gushing Geysers, Yellowstone National Park*





## Foreword

**T**HE United States Government has set aside for your enjoyment the choicest places on this continent—places of grandeur, beauty and of wonder. These are for you. They are the playgrounds of the people. To see them is to make more hearty your affection and admiration for America.

Working in harmony with the Government, the Chicago, Union Pacific and North Western Line has employed, for twenty-seven years, a staff of travel experts who spend their entire time in arranging attractive vacation tours to your national playgrounds. Our big purchasing power buys the best of everything. Hotels, resorts and transportation companies leave nothing undone to supply our organized tours with the degree of high-class service demanded by this organization.

This season we offer four distinct Vacation Tours: The well-known Y-Tours, visiting Yellowstone and Rocky Mountain National Parks, Utah and Colorado; Z-Tours, featuring the wonderlands of Southern Utah, including Zion National Park, Bryce Canyon, Cedar Breaks and the Grand Canyon National Park; C-Tours, embracing a delightful vacation tour of sunny California, including Yosemite National Park; A-Tours, featuring North Pacific Coast, including Rainier National Park, Alaska and the Canadian Rockies (described in separate booklet). If time permits, any of these tours may be combined to suit the vacation plans of anyone. The following pages contain a description of the best vacation trips in America.

Our "all-expense" escorted tours provide a recreational trip with relief from all travel responsibilities. Our tour tickets include all railroad and automobile transportation, first-class sleeping car accommodations, hotels and meals everywhere—everything arranged in advance and an escort furnished without additional charge.

Another important point: We have chosen the fast and direct rail routes in order to avoid unnecessary train travel. Widely traveled people know that the *best* mountain scenery is not immediately adjacent to transcontinental railways, but lies in the great reservations and mountain ranges which can be reached only by highway and trail. Our tours are not only *to* the mountains, but *into* the mountains. After leaving the train our passengers travel in new and comfortable high-power automobiles. These luxurious motor trips carry our passengers into the very heart of the finest scenery on this continent.

To the experience of this Department, the care with which the tours are planned and carried out, and the persuasive prices, add the prestige of the Chicago & North Western Railway and Union Pacific System—the result is the *Ideal Vacation Tour*.

DEPARTMENT OF TOURS

MAINTAINED BY

Manager

CHICAGO & NORTH WESTERN RY.—UNION PACIFIC SYSTEM

148 SO. CLARK ST., CHICAGO, TELEPHONE DEARBORN 2323

Page Five





*Chicago Terminal of the Chicago & North Western Ry.*

## Yellowstone—Rocky Mountain National Parks Y-Tours

### “Two National Parks in Two Weeks”

#### The Story of the Trip

This is the story of a vacation trip *de luxe* to Yellowstone National Park, Rocky Mountain (Estes) National Park, Utah and Colorado. Note particularly the large maps on Pages 18 and 19, which show the complete circle tour of the automobile route in Yellowstone and Rocky Mountain National Parks.

Our escorted tours leave Chicago on Monday, Thursday and Saturday nights during the Park season, commencing on Thursday, June 16th, and ending on Saturday, September 10th. (Three tours per week during June, July and August; September, Saturdays only.) Persons living outside of Chicago join our tours in Chicago on the day of departure, or at the most convenient westward point en route. The regular tours require two weeks. Passengers may take all or part of these complete, economical and absolutely first-class trips. The tours as scheduled are the best possible vacation trips, but if for any reason you cannot return according to our routes, we will sell you the tour for the going trip only, and you may leave the party at Yellowstone, Salt Lake City or any other point, returning how or when you please. Each individual booking receives the personal attention of the management of the tours. Our staff of travel specialists is at your disposal to assist you in making the most of every day of your western tour. For details of schedules, rates, etc., see Pages 16 and 17.





*The Hermitage, a picturesque resort in Ogden Canyon, a few miles from Ogden, Utah.*

### “Westward, Ho!” (First day en route)

These finest of tours start westward from the finest of railroad stations, the Chicago Terminal of the Chicago & North Western Ry. (See illustration.) This is the North Western's magnificent memorial to the life and spirit of the West. From Chicago to Omaha our train glides over the famous, smooth, double-tracks of this premier carrier, protected by automatic electric block safety signals.

West of Omaha we use the Union Pacific System, sponsored by the statesmanship of Lincoln, re-created by the genius of Harriman, and dedicated by both to the “uniting of East and West with a boulevard of steel.” The Lincoln Highway and the Air Mail follow this route.

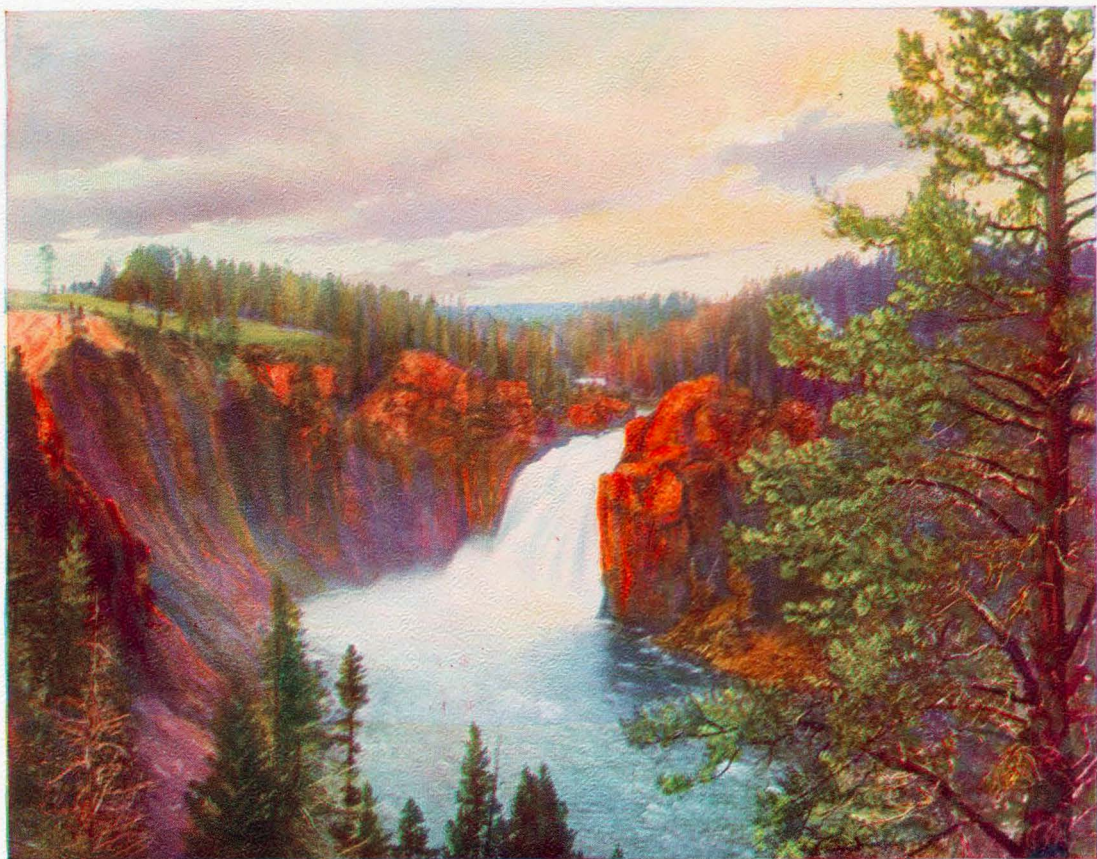
From Illinois to Wyoming our route is over prairie and plain; from Wyoming westward we are in the mountains. You will spend happy hours on the platform of the observation car following, in fancy, that historic highway, the old Overland Trail, first trod by buffalo and worn into a path by Indian moccasins, then followed by fur traders and trappers, grim Mormons and sturdy forty-niners. The roadbed is disintegrated granite taken from Sherman Hill, each tiny particle as clean as a pebble.

A word about the dining car meals. During the two weeks' trip, our guests will be served ten meals in our dining cars. “An abundance of good food, well cooked and served with a smile” is a motto of the Chicago, Union Pacific & North Western Line.

### Trout Dinner in Ogden Canyon

On the second day, in western Wyoming, our train enters the mighty canyons of the Echo and the Weber. These winding mountain corridors bring us to Ogden, Utah, where our party stops for the remainder of the afternoon and evening. This city is famed far and wide for Ogden Canyon, a cleft in the Wasatch Mountains, 2,000 feet deep, through which rushes a torrential mountain stream. Our party rides up this canyon to The Hermitage (see illustration) for a trout and chicken dinner. There is no haste. We have time not only for dinner but to lounge on the big rustic veranda, drinking deep of the mountain air and watching the evening shadows darken the canyon walls overhead. Our train leaves Ogden for West Yellowstone at 8.45 p.m.





*The Upper Fall of the Yellowstone*

### In Geyserland (Third day en route)

We arrive at the attractive West Yellowstone gateway before breakfast. The cool crisp air exhilarates. Something tells you that you are on the threshold of a tremendous scenic adventure. After breakfast, in the handsome new Union Pacific System dining room, our party takes automobiles which have been reserved in advance, and we set forth on a five days' auto tour that will realize most of our dreams.

This informal story will not attempt to portray the glories of the Yellowstone. It is assumed that you have heard about it and read about it and seen pictures of it all your life. If this be true, you are concerned now about practical matters which have to do with *how* you see it.

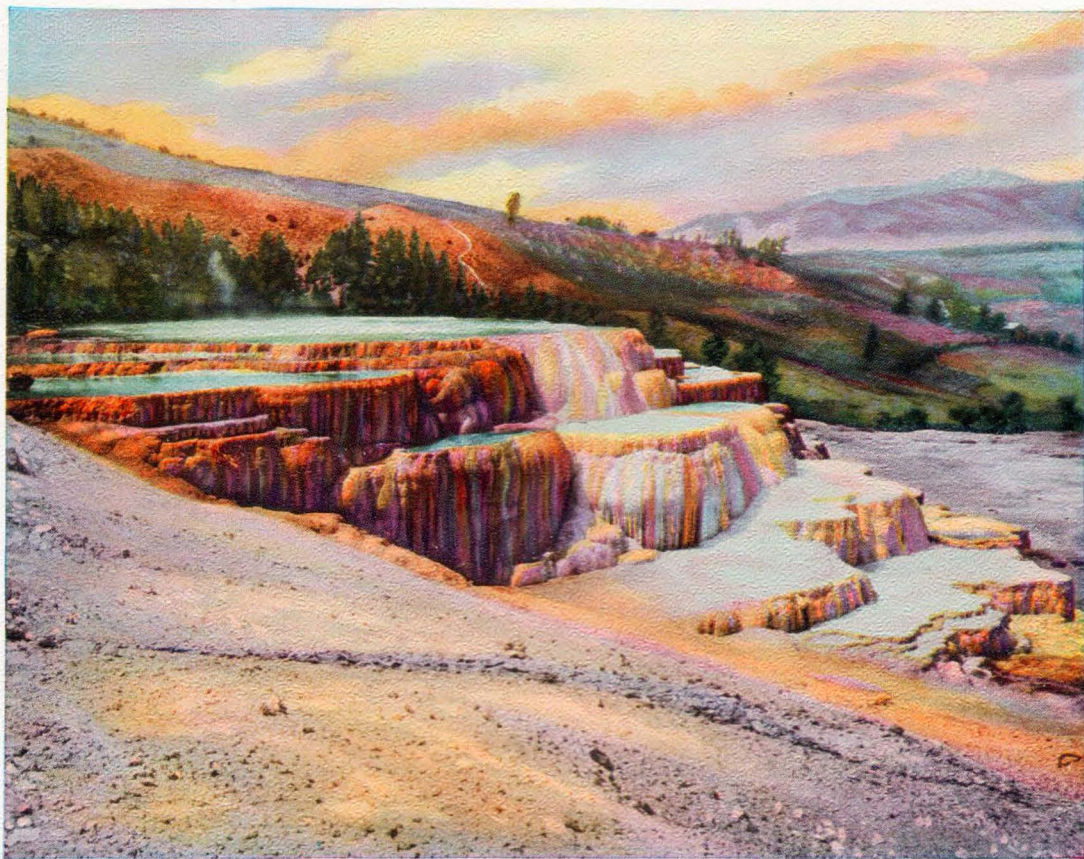
The large comfortable automobile has superseded the stage coach. To be sure this takes away something of the frontier picturesqueness, but the automobile makes the trip more comfortable, safer, opens up new places of interest, and allows double time at Old Faithful and the Grand Canyon.

### Palatial Yellowstone Hotels or Delightful Permanent Lodges

You have heard of that poem in rusticity, Old Faithful Inn! Our tourists spend a night and eat four meals there. Less famous, but more spacious and luxurious, is the new Canyon Hotel, an inspired adaptation of European hotel ideas to Yellowstone environment. The lounge of this hotel is large enough for a thousand couples to dance at one time. We use all the first-class Yellowstone Park hotels on these trips.

We also give escorted service with the Yellowstone Lodge and Camp Company for passengers who prefer these popular rustic accommodations. The permanent lodges are located near the hotels. They are clean, comfortable and sanitary; and the service emphasizes all the wholesome pleasures of "camping out" without any discomforts.





*Mammoth Hot Springs—Yellowstone National Park*

### First Day in Yellowstone (Third day en route)

The morning ride is from West Yellowstone Station to Old Faithful, a distance of twenty-nine miles. You make a wise choice in entering the Park at this Western Entrance because the government road from this point, winding through the Park, brings us to the principal attractions in their proper sequence. Old Faithful Inn is in the heart of the Upper Geyser Basin where all the great geysers are located. You can sit on the broad gallery of the Inn and watch Old Faithful play only 200 yards away! During the afternoon our party is taken over the Basin. By nightfall you will agree that this is the "most weird spot in the Universe."

### Second Day in Yellowstone (Fourth day en route)

The morning is spent at Old Faithful. Short walks from the hotel discover multi-colored pools and more geysers. After lunch a 35-mile motor trip takes the party to Lake Hotel, overlooking Yellowstone Lake. The late afternoon affords time for fishing, boating, mountain climbing or "just resting." After dinner see the bears, big and little, cinnamon and "silvertip," come out of the forest for their twilight meal.

### Third Day in Yellowstone (Fifth day en route)

We leave the hotel at 10.00 a.m., drive twenty miles to the Grand Canyon, visit Artist Point and arrive at the Canyon Hotel at noon. The Grand Canyon is one of the most brilliantly colored spectacles in nature. Great cataracts tumble into its depths. One of these falls drops a greater distance than twice the height of Niagara.

### Fourth Day in Yellowstone (Sixth day en route)

The fourth morning is also spent at the Canyon. You will wish you could stay a month. If you are robust, you can climb down into the Canyon and discover new





*Salt Lake City, Utah, Showing Mormon Temple and State Capitol*

sensations in its sublime depths. At 1.15 p.m. our party boards its motor cars and goes northward through Dunraven Pass, visiting Tower Falls and the strangely different Lower Canyon of the Yellowstone. This part of the Park, opened up by the advent of the auto, gives Yellowstone a new highway, the Chittenden Road, which is superior, scenically and from an engineering standpoint, to any other road in the Yellowstone region. Bowknot curves, lofty passes, broad vistas, towering overhanging cliffs, pinnacles, waterfalls, wild animals and wild flowers make up a partial list of the attractions on this new route, ending at Mammoth Hot Springs Hotel.

### **Fifth Day in Yellowstone (Seventh day en route)**

Our party spends the entire morning in an inspection of the terraces of the Mammoth Hot Springs. Since the destruction of the pink and white terrace of New Zealand these springs stand without counterpart in the world. After visiting this region, Jupiter Terrace, Hymen Terrace and Devil's Kitchen will be woven in the fabric of lasting memories. At 1.30 p.m., the last afternoon in the Park, we leave Mammoth, driving south and west forty-seven miles to West Yellowstone Station. We stop en route at Norris Geyser Basin. The late afternoon ride down Madison River Canyon ends our visit to Nature's Great Museum where she exhibits, as nowhere else, cascades, cataracts, hot spring terraces, geysers, multi-colored mud pots, petrifications, colored canyons and wild animals.

### **From Yellowstone to Salt Lake City**

At Pocatello, Ogden or Salt Lake City, passengers may leave the organized tour for destinations on the Pacific Coast, or any other points not on our designated schedule. If you are interested in an extended trip of this kind, it is easy for us to arrange.

### **Salt Lake City (Eighth day en route)**

We spend all day in Salt Lake City, the capital not only of Utah but of the Inter-Mountain Empire. No city in America is more widely famed and few cities measure up





*Big Thompson Canyon, front door to Rocky Mountain National Park*

so nearly to the traveler's preconceptions. We make our headquarters and take our meals at the magnificent Hotel Utah—a \$2,500,000 hotel.

The day's entertainment at Salt Lake City is guaranteed to take up every minute with interesting experiences and observations. The Mormon Temple! The Great Salt Sea! Verily, these are names to conjure with. We take a leisurely sight-seeing tour of the city. This ride includes not only all the historically famous Mormon places, but the broad boulevards, parks, civic centers and a visit to the magnificent state capitol building. The ride terminates at the Temple Grounds in time for an organ recital in the Tabernacle. After luncheon our party is taken out to Saltair, the beach resort on the shores of Great Salt Lake. This resort is fifteen miles distant from Salt Lake City, and the trip is made by train. Unless you have bathed in the Dead Sea of Palestine, you will not be prepared for the buoyancy and exhilaration of these waters. We leave Salt Lake City at 6.00 p.m. for Colorado, dining on the train.

### First Day, Rocky Mountain National Park Region (Ninth day en route)

We arrive at Greeley, Colorado, via Union Pacific System, at 10.38 a.m. the ninth day. After luncheon at the Camfield Hotel we board the large, comfortable motor cars of the Rocky Mountain Parks Transportation Company for the most popular of our national parks, where we spend the next three days. Our afternoon route is up the Big Thompson Canyon, an auto highway ride which for magnificent heights and sheer depths is not equaled elsewhere in the Rocky Mountains. At 5.00 p.m. our motor cars are due at the Estes Park Chalets, nestling in the foothills. Rocky Mountain National Park! In nobility, in calm dignity, in glory of stalwart beauty, there is no mountain group to excel the company of snow-capped veterans of all the ages which stands at everlasting parade behind its grim, helmeted captain, Longs Peak. There is probably no other scenic neighborhood of the first order which combines mountain outlines so bold with a quality of beauty so intimate and refined. Just to live in the valleys in the eloquent and ever-changing presence of these carved and tinted peaks is itself satisfaction.





*Our Tours use these Safe, Comfortable Automobiles in the National Parks*

## Second Day, Rocky Mountain National Park Region (Tenth day en route)

It is always desirable to rise early in Rocky Mountain National Park. From the Chalets an ideal view of a glorious Rocky Mountain sunrise may be obtained, in itself well worth a visit to this region. The day may be spent as one chooses. Some may wish to explore the mountains on foot, others to go farther on horseback or via automobile, while many prefer to enjoy the mountain scenery from the verandas.

This is a region to delight the nature-lover. He can walk and climb and fish to his heart's content. Hallet's Glacier and Longs Peak challenge him to climb to the ice and the clouds. Not a few accept these challenges and find not only success but mental and physical vigor.

The trail follows the valley floor, flanked by a charming mingling of aspens and evergreens; at times it climbs the walls of mighty canyons affording vistas of distant river valleys and more distant snow-crowned peaks; at times it follows the top of a divide and Longs Peak dominates the picture.

## Third Day, Rocky Mountain National Park Region (Eleventh day en route)

No motor ride of the entire two weeks' vacation tour will give the spice and flavor of our ride this morning from the Chalets to Grand Lake, via Estes Park Village, thence by the Fall River Road, stopping at beautiful Chasm Falls. The Fall River Road has opened to the motor traveler the widely beautiful and hitherto inaccessible western slope of the Continental Divide. Our large and powerful automobiles wind their way ever upward, through Horseshoe Park, until they cross the Divide at Milner Pass, altitude 10,759 feet. They proceed southward on the western slope of the Snowy Range, and shortly before noon reach Grand Lake, the largest and one of the most beautiful lakes in the Colorado Rockies. Overlooking its placid blue waters, a mile and a half above the level of the sea, is Grand Lake Lodge, a rustic cabin resort, where we spend the afternoon and night.





*Denver, the Mile High City, Capital of Colorado*

## Fourth Day, Rocky Mountain National Park Region (Twelfth day en route)

From Grand Lake, the route follows the North Fork of Grand River, passes Granby, and ascends the valley of the Fraser River to its source. The Continental Divide is again crossed at Berthoud Pass, whence new and wonderful panoramas of the Rockies are unfolded. Our cars continue down spectacular Clear Creek Canyon to Idaho Springs, where luncheon is taken at the famous Hot Springs Hotel. This hotel is built over hot springs that are radio active. It was at Idaho Springs that gold was first discovered in Colorado, in the year 1859. From the roadway may be seen many of these gold mines, some of which are still in operation.

Leaving Idaho Springs, our automobiles climb upward for a spin through Denver's Mountain Parks, stopping on the summit of Lookout Mountain for a visit to the grave of "Buffalo Bill," famous Wild West character. From the summit of Lookout Mountain a bird's-eye view of the city of Denver and surrounding country may be obtained.

By hairpin turns and bowknot curves, over smooth mountain highways our cars descend, and soon enter Golden, the first capital of Colorado. A short ride over perfect boulevards brings us to Denver, the "Mile High City," and the capital of Colorado.

### Denver

We arrive in Denver in the late afternoon. There is ample time for visiting the shopping district before we partake of dinner at the Albany Hotel. Denver is the eastern portal of the Mountain Country. The city is famous for its public buildings, parks and commercial life. No city the size of Denver can boast of more beautiful residences.

The afternoon and evening are left open so that each individual's desire may be fulfilled. The Albany Hotel is situated in the heart of the city, making it convenient for our party to make the best of the time allotted. Our automobiles are scheduled to call at the hotel at 10.00 p.m., to transfer us to the Union Station, from which our Pullmans leave at 11.30 p.m. for Chicago and the East.





*Pike's Peak Avenue, Colorado Springs*

## Colorado Springs, and the Pikes Peak Region

### Extension Tours

Passengers may leave the regular tour at Denver, after visiting Rocky Mountain National Park, and take advantage of our "all-expense" escorted tour service to Colorado Springs. This extension includes the principal attractions of the Pikes Peak region and leaves Denver every Tuesday, Thursday and Saturday during the summer season. (For detailed itinerary and rates, see Page 17.)

We make our headquarters at the Antlers Hotel. Our party leaves at 8.00 a.m. in seven-passenger touring cars, for a climb to the very tiptop point of Pikes Peak. We return to the Antlers Hotel for luncheon.

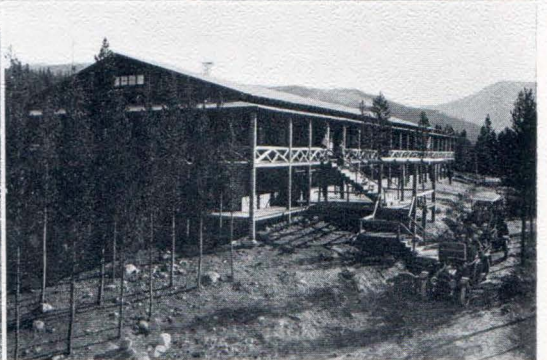
After luncheon automobiles take us on the Circle Drive which includes a visit to the Garden of the Gods, Williams Canyon, Cave of the Winds, and South Cheyenne Canyon in which are located the Seven Falls. We return to the Antlers Hotel for dinner and lodging.

There may be some who, on account of the altitude, or for other reasons, do not wish to take the trip to the summit of Pikes Peak, in connection with the Circle Drive. For these passengers, the following all-day optional trip is available: Automobile trip via Indian Mesa to Garden of the Gods and Manitou Mineral Springs, continuing via Williams Canyon to Cave of the Winds, thence over the Temple Drive to Cascade and through Ute Pass to Woodland Park and the Florissant Petrified Forest (luncheon at Pavilion). The Cripple Creek District is next reached, with time to visit the gold mines. The return trip is made over the Corley Mountain Highway, passing Bruin Inn, Helen Hunt Falls, thence through North Cheyenne Canyon and South Cheyenne Canyon with a visit at Seven Falls. Return to Antlers Hotel for dinner and lodging.

The following morning is left open. At 10.10 a.m. our party is transferred to the depot, for return to Denver. (Luncheon on train.) Upon arrival we take a sight-seeing trip around the city, visiting the business and residence section and city parks. Dinner is served at the Albany Hotel. We leave Denver at 11.30 p.m. for Chicago and the East.

*Arrangements for this Extension must be made at the time of booking or before leaving Chicago, as all unsold reservations are canceled on the date the tour departs from Chicago and our "all-expense" rates cannot be secured after that time.*





*Old Faithful Inn, Yellowstone Park*

*Lake Hotel, Yellowstone Park*

*Canyon Hotel, Yellowstone Park*

*A Permanent Lodge, Yellowstone Park*

*Estes Park Chalets, Rocky Mountain Park*

*Grand Lake Lodge, Rocky Mountain Park*



# Yellowstone-Rocky Mountain Escorted Tours

LEAVE CHICAGO AS FOLLOWS:

Tour	Tour	Tour	Tour
Y-1 Thu., June 16	Y-10 Thu., July 7	Y-19 Thu., July 28	Y-28 Thu., Aug. 18
Y-2 Sat., June 18	Y-11 Sat., July 9	Y-20 Sat., July 30	Y-29 Sat., Aug. 20
Y-3 Mon., June 20	Y-12 Mon., July 11	Y-21 Mon., Aug. 1	Y-30 Mon., Aug. 22
Y-4 Thu., June 23	Y-13 Thu., July 14	Y-22 Thu., Aug. 4	Y-31 Thu., Aug. 25
Y-5 Sat., June 25	Y-14 Sat., July 16	Y-23 Sat., Aug. 6	Y-32 Sat., Aug. 27
Y-6 Mon., June 27	Y-15 Mon., July 18	Y-24 Mon., Aug. 8	Y-33 Mon., Aug. 29
Y-7 Thu., June 30	Y-16 Thu., July 21	Y-25 Thu., Aug. 11	Y-34 Sat., Sept. 3
Y-8 Sat., July 2	Y-17 Sat., July 23	Y-26 Sat., Aug. 13	Y-35 Sat., Sept. 10
Y-9 Mon., July 4	Y-18 Mon., July 25	Y-27 Mon., Aug. 15	

## Detailed Schedule

Lv Chicago.....	8.30 p.m.	.....	Sat., Mon. or Thu.	C. & N. W. Ry.
Ar Omaha.....	9.30 a.m.	1st day	Sun., Tue.	" Fri.
Lv Omaha.....	9.50 a.m.	1st day	Sun., Tue.	" Fri. U. P. System
Ar Ogden.....	1.10 p.m.	2d day	Mon., Wed.	" Sat.

## In Ogden Seven Hours—Side-Trip to Ogden Canyon

Lv Ogden.....	8.45 p.m.	2d day	Mon., Wed., or Sat.	U. P. System
Ar West Yellowstone...	7.30 a.m.	3d day	Tue., Thu.	" Sun.

## Five-Day Automobile Tour of Yellowstone National Park

Lv West Yellowstone...	9.30 a.m.	3d day	Tue., Thu. or Sun.	Automobile
<i>Stopping en route at Mammoth Paint Pots and Great Fountain Geyser</i>				
Ar Old Faithful.....	11.55 a.m.	3d day	Tue., Thu. or Sun.	" 29 miles
Lv Old Faithful.....	2.00 p.m.	4th day	Wed., Fri.	" Mon.
<i>Stopping en route at Thumb Paint Pots and Fishing Cone</i>				
Ar Lake.....	5.00 p.m.	4th day	Wed., Fri.	or Mon. " 35 "
Lv Lake.....	10.00 a.m.	5th day	Thu., Sat.	" Tue. "
<i>Stopping en route at Mud Geyser and Artist Point</i>				
Ar Grand Canyon.....	12.00 noon	5th day	Thu., Sat. or Tue.	" 20 "
Lv Grand Canyon.....	1.15 p.m.	6th day	Fri., Sun.	" Wed. "
<i>Stopping en route at Dunraven Pass and Tower Falls</i>				
Ar Mammoth Hot Spr....	5.00 p.m.	6th day	Fri., Sun. or Wed.	" 40 "
Lv Mammoth Hot Spr....	1.30 p.m.	7th day	Sat., Mon.	" Thu. "
<i>Stopping en route at Norris Geyser Basin</i>				
Ar West Yellowstone...	5.04 p.m.	7th day	Sat., Mon. or Thu.	" 47 "
Lv West Yellowstone...	7.00 p.m.	7th day	Sat., Mon.	" Thu. U. P. System
Ar Ogden.....	6.10 a.m.	8th day	Sun., Tue.	" Fri. "
Lv Ogden.....	6.20 a.m.	8th day	Sun., Tue.	" Fri. "
Ar Salt Lake City.....	7.30 a.m.	8th day	Sun., Tue.	" Fri. "

## In Salt Lake City One Day—Sight-Seeing Tour by Automobile

### Side-Trip to Saltair Beach

Lv Salt Lake City.....	6.00 p.m.	8th day	Sun., Tue. or Fri.	U. P. System
Ar Greeley.....	10.38 a.m.	9th day	Mon., Wed.	" Sat.

## Three-Day Automobile Tour Rocky Mountain National Park Region

Lv Greeley.....	1.30 p.m.	9th day	Mon., Wed. or Sat.	Automobile
<i>En route to Estes Park via the Big Thompson Canyon</i>				
Ar Estes Park Chalets...	5.00 p.m.	9th day	Mon., Wed. or Sat.	" 55 miles
<i>The 10th day may be spent as one chooses—in exploring the mountains on foot, horseback or automobile</i>				
			Tue., Thu. or Sun.	
Lv Estes Park Chalets...	8.00 a.m.	11th day	Wed., Fri.	" Mon. "
<i>Via Fall River Road, Horseshoe Park and Milner Pass</i>				
Ar Grand Lake Lodge...	12.30 p.m.	11th day	Wed., Fri. or Mon.	" 42 "
Lv Grand Lake Lodge...	8.00 a.m.	12th day	Thu., Sat.	" Tue. "
Ar Denver.....	3.45 p.m.	12th day	Thu., Sat.	" Tue. " 110 "

## In Denver Afternoon and Evening

Lv Denver.....	11.30 p.m.	12th day	Thu., Sat. or Tue.	U. P. System
Ar Omaha.....	3.30 p.m.	13th day	Fri., Sun.	" Wed.
Lv Omaha.....	3.45 p.m.	13th day	Fri., Sun.	" Wed. C. & N. W. Ry.
Ar Chicago.....	7.00 a.m.	14th day	Sat., Mon.	" Thu. "



## Cost of Complete 14 Day Tours From Chicago, Returning to Chicago

	Using Yellowstone Park Hotels	Using Yellowstone Park Lodges
Total—Cost Rate, per person:		
One person occupying double lower berth.....	\$219.96	\$210.96
One person occupying double upper berth.....	212.75	203.75
Two persons occupying one double lower berth (each).....	201.96	192.96
Two persons occupying one section (each).....	216.36	207.36

Compartment and drawing-room rates on application.

The above rates cover all round-trip railroad transportation, standard sleeping car accommodations as indicated for complete trip, all meals everywhere; automobile tour of and hotel or lodge accommodations in Yellowstone National Park; automobile tour of and accommodations at the lodges in Rocky Mountain National Park; accommodations at hotels and sight-seeing trips in Ogden, Salt Lake City, Greeley and Denver; transfer of passengers and hand baggage to and from city hotels; in fact, every actual expense, furnishing "The Best of Everything."

## Cost of Incomplete Tours From and to Points Named

	Using Yellowstone Park Hotels	Using Yellowstone Park Lodges
All tour privileges from Chicago to departure from Yellowstone Park (any entrance), with railroad ticket only for return to Chicago.....	\$139.48	\$130.48
All tour privileges from Chicago to arrival Ogden, eighth day, with railroad ticket only for return to Chicago.....	143.23	134.23
All tour privileges from Chicago to departure Salt Lake City, with railroad ticket only for return to Chicago.....	149.48	140.48
All tour privileges from Chicago to arrival Greeley, with railroad ticket only for return to Chicago.....	161.61	152.61
All tour privileges from Chicago to departure Denver, with railroad ticket only for return to Chicago.....	205.08	196.08
All tour privileges from Omaha, returning to Omaha, including railroad ticket.....	198.28	189.28

*Above rates based on one person occupying lower berth. Rates for other Pullman accommodations will be quoted on application.*

## Colorado Springs Extension

### Arrangements Must be Made at Time of Booking

Lv Denver.....	4.00 p.m.	12th day	Tue., Thu. or Sat.	D. & R. G. W.
Ar Colorado Springs.....	6.40 p.m.	12th day	Tue., Thu. or Sat.	"

*Headquarters at Antlers Hotel. Trip to Pikes Peak morning 13th day (Wed., Fri., Sun.) via automobile, leaving Antlers Hotel 8.00 a.m. and returning at noon for luncheon. Circle Drive at 2.00 p.m., returning to Antlers Hotel for dinner and lodging, or all day trip including Circle Drive, Cripple Creek and Corley Mountain Highway. Following morning is left open.*

Lv Colorado Springs.....	10.10 a.m.	14th day	Thu., Sat. or Mon.	D. & R. G. W.
Ar Denver.....	12.45 p.m.	14th day	Thu., Sat. or Mon.	"

*Luncheon on train. Denver city sight-seeing trip immediately on arrival, returning to Albany Hotel for dinner.*

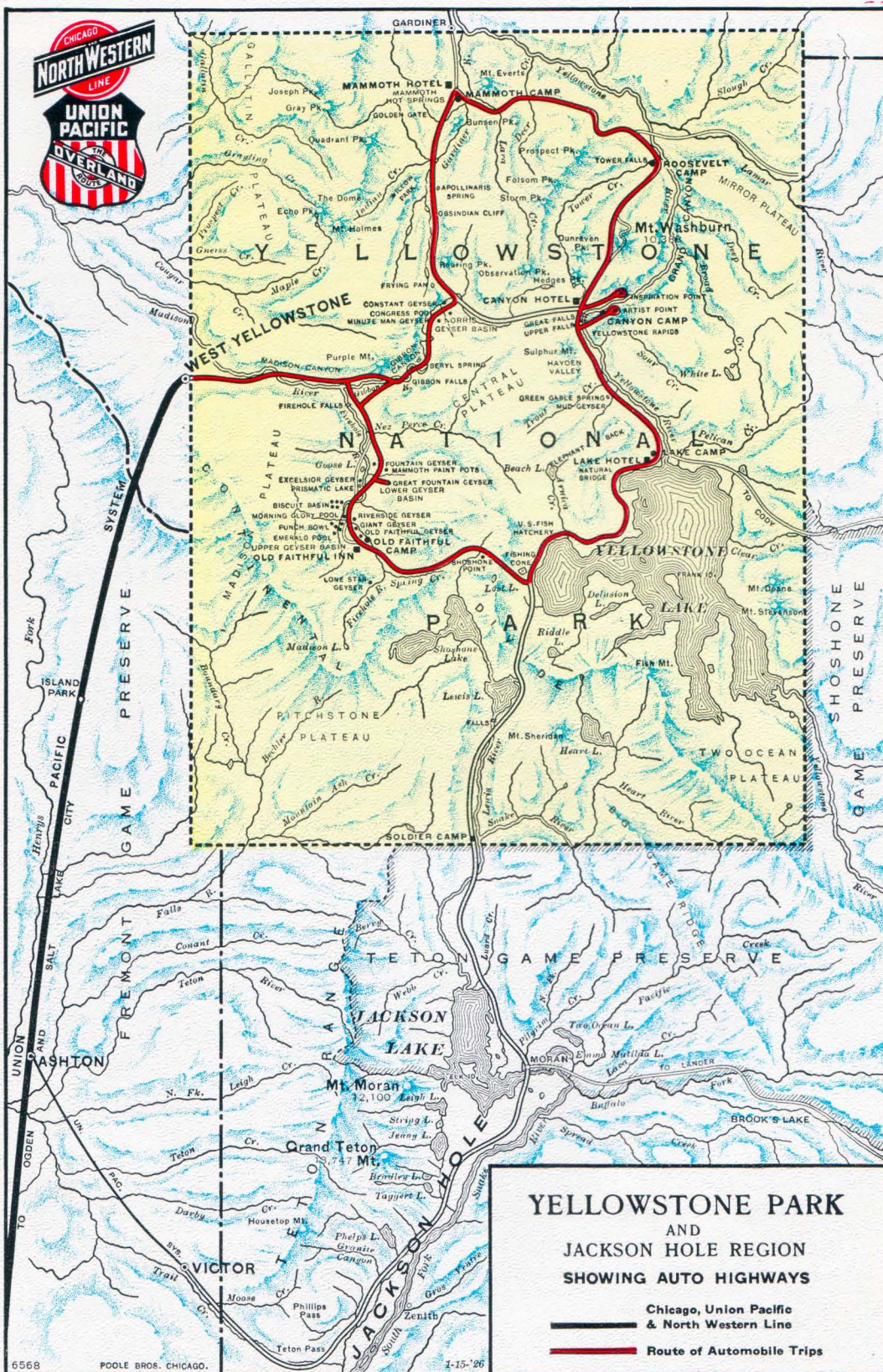
Lv Denver.....	11.30 p.m.	14th day	Thu., Sat. or Mon.	U. P. System
----------------	------------	----------	--------------------	--------------

Total cost rate for this Extension, Denver to Colorado Springs and return, including auto trips, hotel accommodations, all meals, transfers, etc.....\$27.75

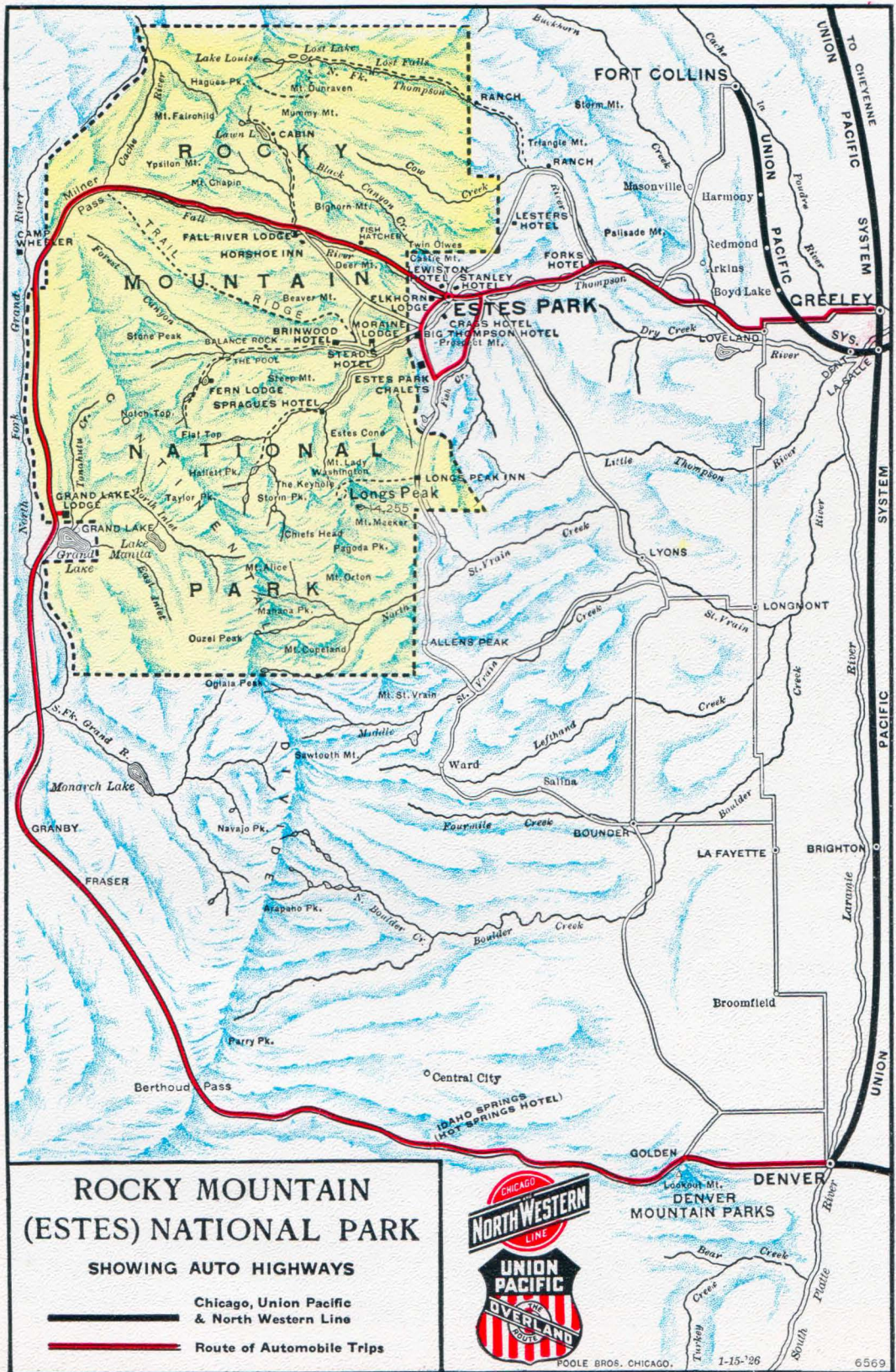
*NOTE—If making Colorado Springs Extension Tour, be sure to have your local ticket agent include in railroad ticket side trip coupons, Denver to Colorado Springs and return.*

*Rates from other cities and rates for other incomplete tours for passengers traveling to the Pacific Northwest, California, etc., on application.*













*The Great White Throne, Zion National Park*





*The Three Patriarchs, Zion National Park*

## Zion and Grand Canyon National Parks Bryce Canyon—Cedar Breaks Tours to the Land of Colorful Canyons A Synopsis of the Trip

No artist can paint—no writer can adequately describe—the grandeur of Southern Utah. Containing some of the majestic scenic features of each of our great western National Parks, it excels them all in glorious, unbelievable color.

The following pages are not intended to describe the scenery of this remarkable region, but simply to outline an ideal two-weeks' vacation trip. Southern Utah must be seen to be appreciated. The map on Pages 32-33 of this publication reveals at a glance the scope of the automobile trips which are included in the tour.

These economical, "all-expense", escorted tours leave Chicago every Saturday night during the summer season, commencing June 11th. Based on our long experience in arranging tour schedules, we have included in this itinerary the "Best of the West" which can be visited without haste, in the ordinary vacation period. However, our policy makes it possible for passengers to take all or any part of these complete, economical and absolutely first-class trips.

### On Our Way! (First day en route)

Our route is due west, like that of the early pioneers, who were the first white men to visit Southern Utah. Departing from Chicago at 8.30 p.m. on the famous Gold Coast Limited, from the magnificent Terminal of the Chicago & North Western Railway, we soon pass the beautiful suburban districts lying adjacent to the city, cross the picturesque Fox River at Geneva, and pass through the fertile and productive farm lands of Northern Illinois. The Mississippi River is crossed at Clinton, where we enter Iowa. Early next morning we cross the Missouri and arrive at Omaha, Nebraska.

The route of the Union Pacific System recalls the old stories of our Great West. From the observation platform we view the landscape in comfort as we glide along the road which follows the original trail of the early western pioneers. It brings back the days of the Pawnees, Sioux and Arapahoes who were continually fighting the onward march of the "Iron Horse."

Even after the Union Pacific Railroad was completed, many towns along the way remained the rendezvous of the cowboys. Night was disregarded and shooting frays attracted little attention. For a time buffalo continued to roam the plains.





*Panorama of Zion Canyon, Zion National Park*

Both the buffalo and the desperado have vanished, and the Indian has lost his savageness, but the stage on which they appeared will bring back vividly the tales of the old days when the first railroad into the West was built.

The Overland Route, a twin boulevard of steel, has succeeded the Overland Trail as the great highway to the West. Westbound and eastbound trains have their own separate tracks, protected by thousands of sleepless watchmen—the automatic electric block signals. The trains are composed of powerful locomotives and the finest of sleeping, observation and dining cars. During the two-weeks' time, our guests will be served ten meals in the dining cars—all other meals are provided for in the National Parks or at the magnificent hotels in the cities visited en route.

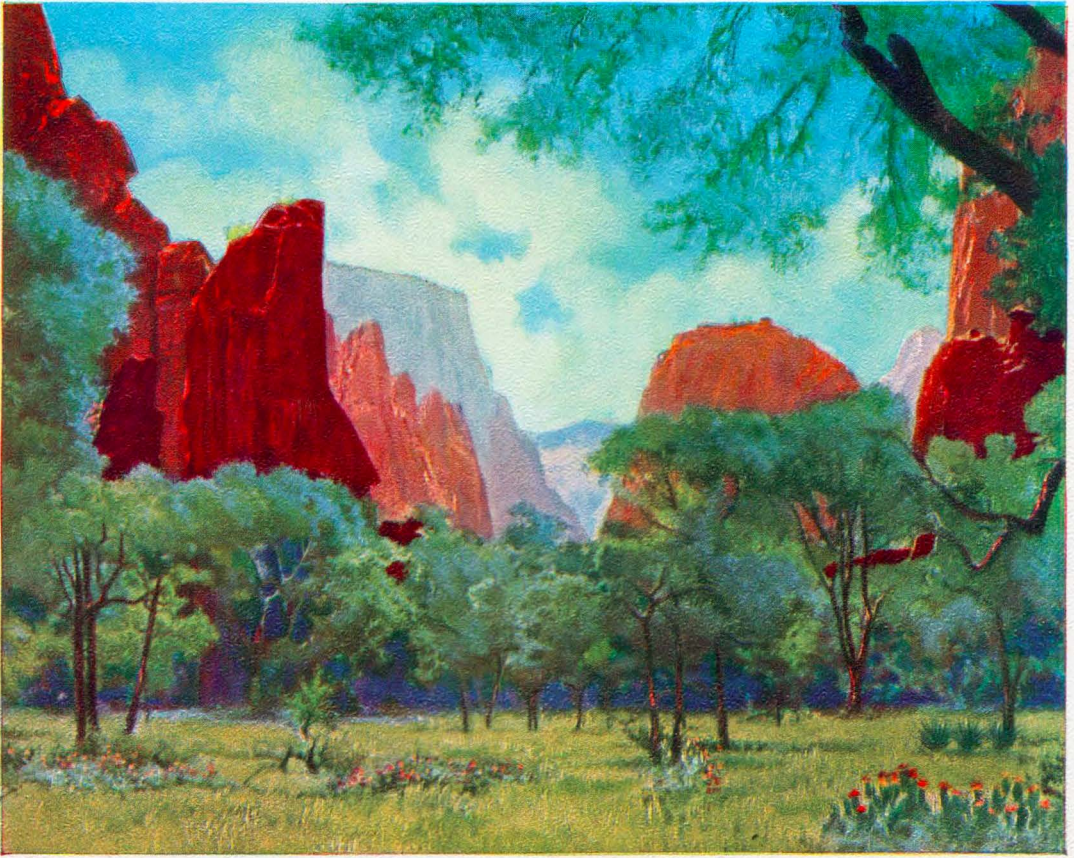
### Trout Dinner in Ogden Canyon, Utah

On the second day, after winding through the mighty canyons of the Echo and Weber, our train halts at Ogden, Utah, at the very base of the lofty Wasatch Range. This picturesque Mormon city was laid out under the direction of Brigham Young. Seven miles beyond the city, is a cleft in the Wasatch Mountains, beautiful Ogden Canyon. Our party rides through this stupendous passageway to The Hermitage for a trout and chicken dinner.

### Cedar City—The Gateway (Third day en route)

Leaving Ogden at 7.40 p.m., our train wends southward and traverses the eastern edge of the valley of the Great Salt Lake, passing through Salt Lake City at 8.35 p.m.





*The Temple of Sinawava, Zion National Park*

The steep ramparts of the majestic Wasatch Mountains rise near at hand in the East, and in the West the gleaming waters of the famous "Dead Sea of America" may occasionally be seen, reflecting the last rays of a setting sun. We arrive at Cedar City—the gateway to "Utah's Wonderlands," early next morning.

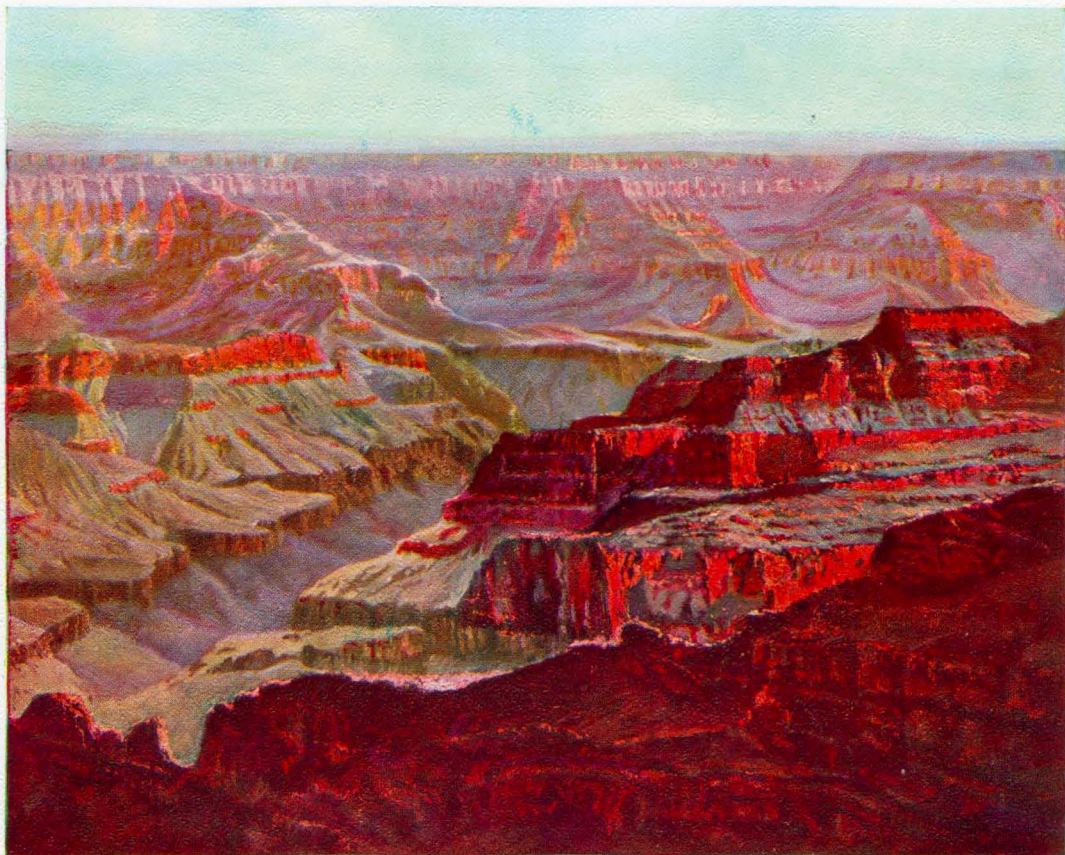
After breakfast at El Escalante Hotel, our party boards large, comfortable automobiles for a seven-day tour of Zion National Park, Grand Canyon, Bryce Canyon and Cedar Breaks—a quartet of scenic attractions unsurpassed in all America.

### **Zion National Park (Third day en route)**

The ride in comfortable Union Pacific (Utah Parks Co.) motor busses from Cedar City to Zion National Park, a distance of sixty-five miles, is largely through Utah's "Dixie," where grow figs, pomegranates, grapes, peaches, pears, plums, apricots, melons and almonds. Our route follows the trail of the early Mormon pioneers. The interesting Mormon villages, with their quaint adobe houses, are changed but little in appearance from the original settlements. The whole scene has a pastoral air of Biblical peace and plenty.

Soon the scene changes completely and there appear panoramas never to be forgotten. We are within the gates of Zion Canyon. On our right are the Watchman, Three Wise Men, Temple of the Sun, and East Temple; on our left, the West Temple, Three Patriarchs, Altar of Sacrifice and Angel's Landing, each a varied blaze of brilliant color and decorated with an endless array of fantastic sculpturing. Every tower and every peak stands majestic, rearing its crest half a mile heavenward, capped with pure





*Sunset at North Rim, Grand Canyon*

white, which tones through pale pinks to deep reds and somber browns—the whole suggesting a study in oils from the brush of a master painter.

At 11.30 a.m. we arrive at the Lodge, nestling at the very base of the gigantic canyon wall. Yes! This is Zion—the newest of our National Parks.

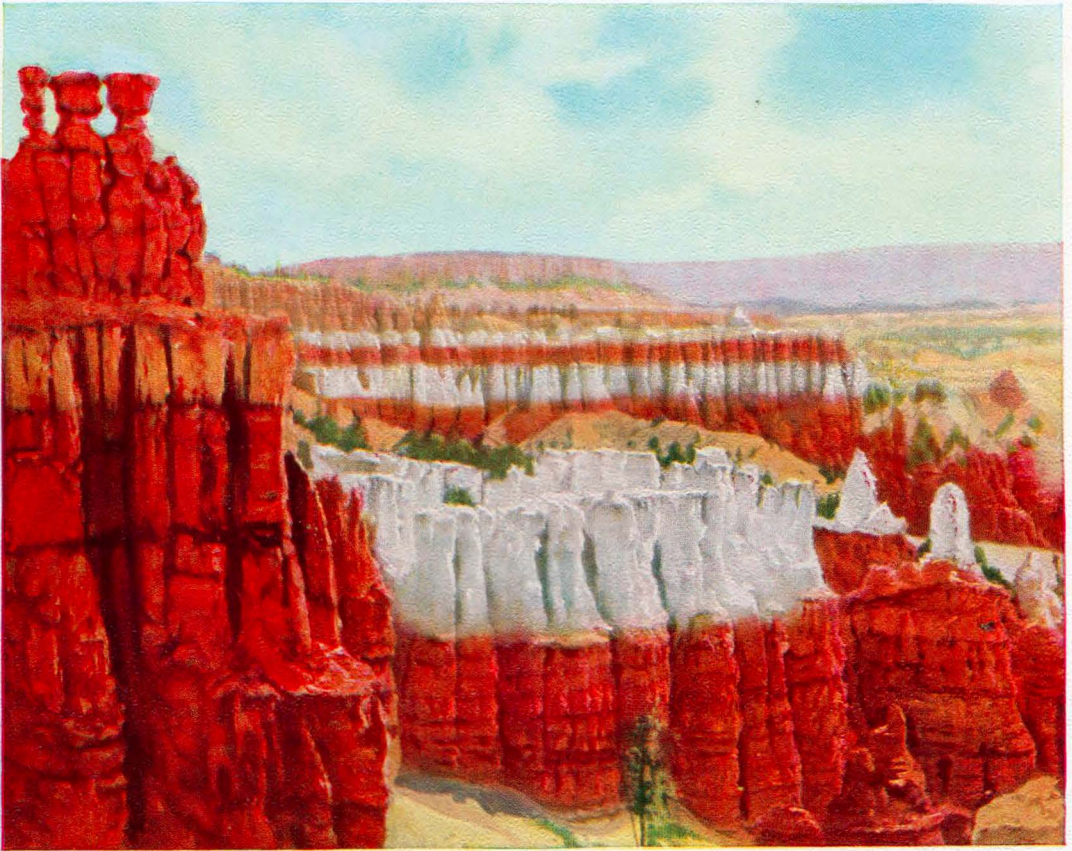
We are immediately assigned to our cabins and after having viewed the surrounding mountain walls, we are summoned to the Lodge for luncheon.

The early afternoon is spent in exploring the near-by trails or in viewing the majestic towers and turrets from the veranda of Zion Lodge. About four o'clock, when the sun's rays are focused on the towering temples, our party boards motor cars for a drive up the canyon, then leaves the cars and continue toward "The Narrows" by trail. A short distance farther on, the canyon shrinks to a width of 4 feet, and the perpendicular walls stretch heavenward 2,500 feet. This is "The Narrows." Near the end of the automobile road lies a beautiful amphitheater, carpeted with flowers and adorned with huge red obelisks—the Temple of Sinawava. Ample time is allowed in this locality for a closer view of these towering shrines, which are splashed with various shades of red and white.

### Second Day in Zion (Fourth day en route)

The entire day is spent in Zion. Within a short distance from the Lodge, up the canyon, is the Great White Throne. (See Page 20.) This huge butte, towering over 3,000 feet from the canyon floor, red, pink and white, is in sharp contrast to the many





*The Temple of Osiris, Bryce Canyon*

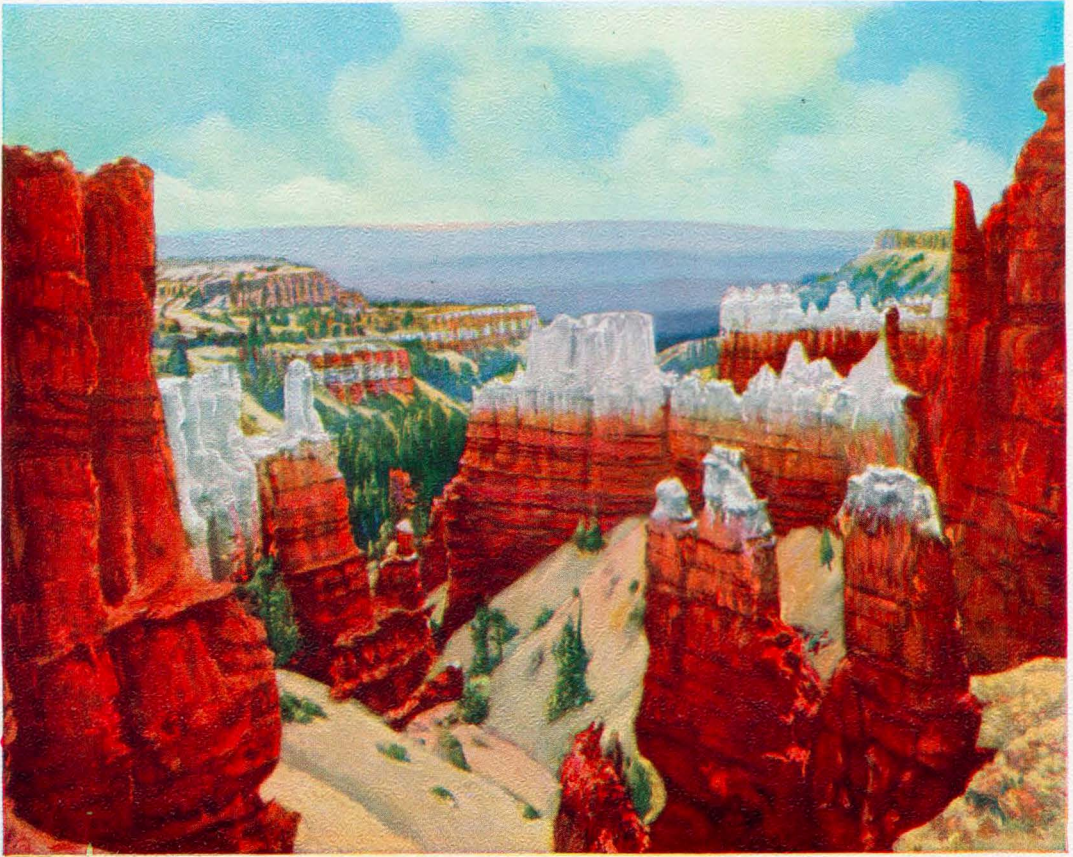
other darker peaks surrounding it. Across the canyon is Angel's Landing, differing from the Great White Throne, both in height and coloring. Inviting trails challenge the nature-lover to ascend them, either on foot or horseback. Every turn brings new sensations and discloses an entirely new and different panorama of the temples and towers along the walls of Zion. A hike, led by an experienced guide, has been arranged, so that those who desire may ascend the canyon walls by trail, for a glorious panoramic view of the entire canyon from the rim. The evening around the open air camp fire will bring back to us vividly the glories of the day.

### On to Grand Canyon National Park (Fifth day en route)

We leave Zion Lodge at 8.00 a.m. for Grand Canyon. The road follows the Vermilion Cliffs through the Kaibab Indian Reservation to Pipe Spring, a celebrated oasis on the plains. The two historic stone fortresses, built many years ago for protection from the Indians, still remain. We stop at the quaint little Mormon village of Fredonia for lunch.

The afternoon ride is across the wonderfully colored Prismatic Plains and through the great Kaibab Forest, the largest and most beautiful virgin forest in America. Thousands of deer roam this vast expanse unmolested. The Kaibab is also the home of the whitetail squirrel, which is found nowhere else in the world. At 5.00 p.m. we arrive at De Motte Park, spending the late afternoon and night at V. T. Ranch. Hundreds of deer may be seen at one time grazing in the meadows which surround the ranch.





*The Sculptor's Studio, Bryce Canyon*

### Grand Canyon National Park (Sixth day en route)

At 8.00 a.m. we leave V. T. Ranch, and drive to Cape Royal, the very brink of the Grand Canyon of Arizona. The earth suddenly sinks at our feet to illimitable depths. In an instant the awe-inspiring scene is before us. We proceed to Bright Angel Lodge where we spend the late afternoon and night on the brink of the Canyon. From the various observation points, each turn has its charming revelations of color. The eye is bewildered by the variety, the color and the grandeur of the canyon scenery.

### Bryce Canyon (Seventh day en route)

After having witnessed a magnificent sunrise at the Grand Canyon, we board the automobiles at 9.00 a.m. to again enter the Kaibab Forest, arriving at Fredonia for lunch. An interesting portion of the day's drive is through Red Canyon, which is in reality a flaming gorge. The spires and pinnacles are deep red, fading into delicate pinks. No stretch of imagination is needed to see statues, minarets, fortresses and many other objects. Before we have even gained our equanimity from these dazzling sights, our automobiles arrive at the "Gem of all Southern Utah"—Bryce Canyon.

The startling grandeur of Bryce Canyon does not inspire speech, but only silent and solemn contemplation. The eye is fairly staggered by the maze of monuments, pyramids, pagodas, spires and statues, and the miles of gorgeous lacework in painted stone. At this time, in the late afternoon, with the sun's reflections behind the towering





*The Painted Buttresses of Cedar Breaks*

pinnacles, one may well imagine he sees an old Babylonian or Egyptian city, with lighted towers and windows. Only the attractive Bryce Lodge, with its inviting rustic cabins, where we spend the night, can induce us to leave the rim of this enchanting amphitheater. After dinner we will return to gaze on indescribably weird and gorgeous formations. Darkness finally forces us to leave for our cabins, perhaps to dream of this lovely "silent city."

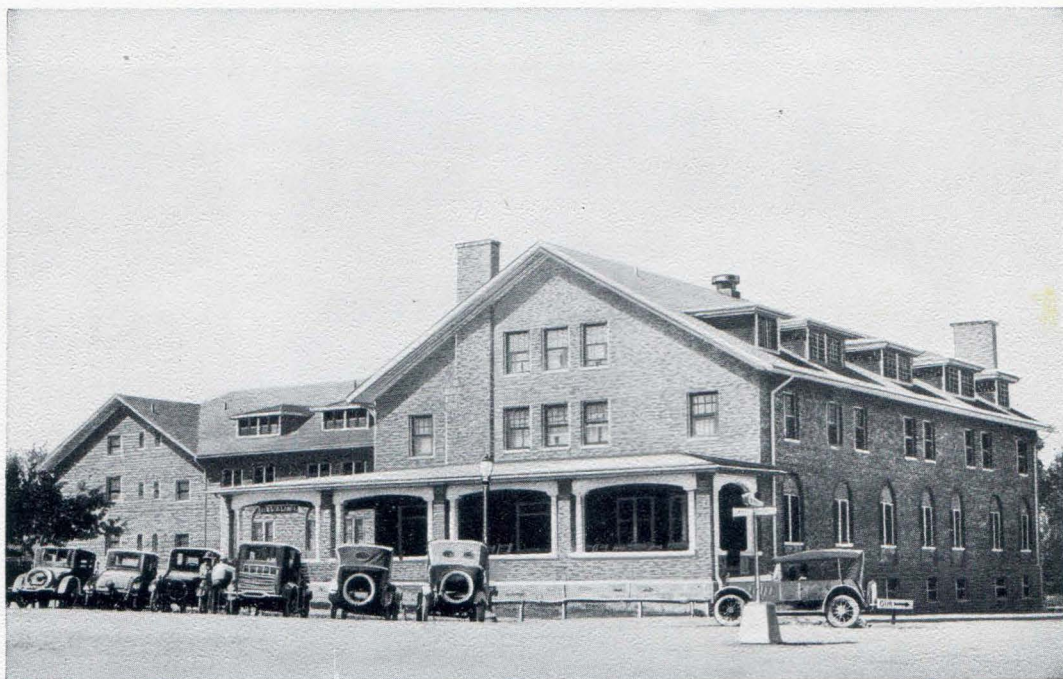
### Second Day at Bryce Canyon (Eighth day en route)

With the coming of the dawn we will find ourselves again on the brink of the great prismatic abyss, watching the rising sun paint in reds, pinks, purples and whites every pinnacle, mosque, castle and cathedral. The day is left open to follow the canyon's trails into the mysterious depths. A strangely different impression of the towering parapets and spires is unfolded at every turn of the trail; from above they seemed dainty and fragile; now they appear gigantic. You will agree that Bryce Canyon is an amazing, entrancing spectacle of matchless beauty.

### Cedar Breaks (Ninth day en route)

Our party leaves Bryce Canyon at 9.00 a.m. and soon enters the Sevier Forest. Without warning the road stops at the very brink of Cedar Breaks, another stupendous chasm, miles across and over a half a mile deep. Aside from the massive grandeur, Cedar Breaks presents a sublimity of coloring and erosion that is entralling. Our





*El Escalante Hotel at Cedar City, Utah—The Gateway to Zion National Park*

guide will point out its many gigantic formations, such as the Walls of Jericho, Point Sublime and the Gates of the Forbidden City.

Reluctantly we leave Cedar Breaks on the last stretch of our tour among Utah's Wonderlands. As we ride along the way, to our left in the distance can be seen the towers and temples of Zion, which only a few days before we viewed from their very bases. We arrive at Cedar City at 4.00 p.m., allowing ample time for visiting curio shops before dinner, which is served at El Escalante Hotel. Our Pullmans leave at 8.30 p.m. for Salt Lake City, via Union Pacific System.

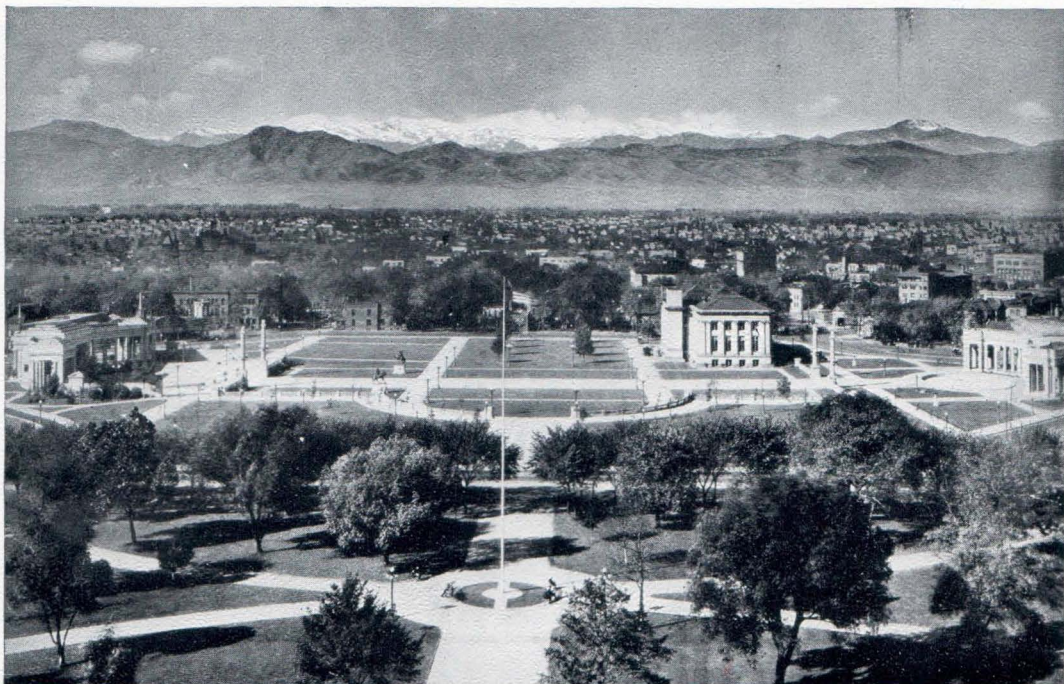
### Salt Lake City (Tenth day en route)

We awake to find ourselves in the capital city of Utah and the headquarters of the Mormon Church. The entire day is spent in this historic city. The magnificent Hotel Utah is our headquarters.

After breakfast we make a leisurely sight-seeing tour of the Mormon capital, so rich in tradition and romance.. The ride over broad boulevards, through the parks, residential districts and civic centers, has many scenes of interest. The Capitol, the Mormon Temple, the Tabernacle, the homes of Brigham Young and the monuments erected to his memory, are but a few of the many interesting points visited on this trip. We return to the Mormon Temple grounds and attend the organ recital in the famous Tabernacle, noted for its perfect acoustics and its marvelous organ.

The afternoon is spent at Saltair Beach—the bathing resort on the shore of Great Salt Lake. A swim in the refreshing and amazingly buoyant waters, which are seven times saltier than the ocean, is an experience not to be duplicated in America. You may float as long as you like; you cannot sink in this unique inland sea. We leave Salt Lake City at 6.00 p.m. for Colorado, dining on the train.





*The Continental Divide viewed from Denver's Civic Center*

### Denver (Eleventh day en route)

We arrive Denver at 12.15 noon and are transferred to the Albany Hotel for luncheon. After luncheon, automobiles will be waiting to take us on a drive through Denver's city parks, residential and business sections, terminating at the Union Station. Our train will leave Denver at 4.00 p.m., arriving Colorado Springs at 6.40 p.m. We will make our headquarters at the spacious Antlers Hotel.

### Colorado Springs (Twelfth day en route)

At 8.00 a.m. seven-passenger automobiles will call for our party for a trip to the summit of Pikes Peak. This is the loftiest peak in the region—its head often thrust high above the clouds. All around are gigantic mountain masses piled upon each other in inextricable confusion, cut through here and there by sheer gorges of dizzy depths; to the west, majestic ranges of snow-capped mountains—the Continental Divide; to the east, the far-flung expanse of fruitful plain with its tiny urban checkerboards; to the south, the isolated summits of the Spanish Peaks; and to the north, Longs Peak, rising in grim grandeur among its fellow peaks. We return to the Antlers for lunch.

After luncheon we again board our automobiles for the Circle Drive, visiting the Garden of the Gods, a region of fantastic formations of red sandstone; Manitou; Williams Canyon; Cave of the Winds, remarkable for the crystalline decorations of its sixteen chambers; South Cheyenne Canyon, with its towering walls of mosaic granite, and beautiful Seven Falls.

Tour passengers who do not wish to make the trip to the summit of Pikes Peak have the option of combining the Circle Drive with an automobile trip to Cripple Creek and return over the new Corley Mountain Highway, an all-day trip.

Our drive terminates at the station. Train leaves Colorado Springs at 6.20 p.m. for Chicago, arriving 7.00 a.m., the fourteenth day.



# Zion National Park—Bryce Canyon—Cedar Breaks —Grand Canyon and Colorado Escorted Tours

## LEAVE CHICAGO AS FOLLOWS:

Tour	Tour	Tour	Tour
Z-1 Sat., June 11	Z-5 Sat., July 9	Z- 9 Sat., Aug. 6	Z-12 Sat., Aug. 27
Z-2 Sat., June 18	Z-6 Sat., July 16	Z-10 Sat., Aug. 13	Z-13 Sat., Sep. 3
Z-3 Sat., June 25	Z-7 Sat., July 23	Z-11 Sat., Aug. 20	Z-14 Sat., Sep. 10
Z-4 Sat., July 2	Z-8 Sat., July 30		

## Detailed Schedule

Lv Chicago.....	8.30 p.m.	.....	Sat.	C. & N. W. Ry.
Ar Omaha.....	9.30 a.m.	1st day	Sun.	"
Lv Omaha.....	9.50 a.m.	1st day	Sun.	U. P. System
Ar Ogden.....	1.10 p.m.	2d day	Mon.	"
Seven Mile Side Trip to Ogden Canyon for Trout and Chicken Dinner				
Lv Ogden.....	7.40 p.m.	2d day	Mon.	U. P. System
Ar Salt Lake City.....	8.35 p.m.	2d day	Mon.	"
Lv Salt Lake City.....	9.00 p.m.	2d day	Mon.	"
Ar Cedar City.....	7.00 a.m.	3d day	Tue.	"

## Six Days in Utah's Scenic Wonderland

Lv Cedar City.....	8.20 a.m.	3d day	Tue.	Automobile
<i>En route through Utah's "Dixie"</i>				
Ar Zion Lodge.....	11.30 a.m.	3d day	Tue.	Automobile
<i>Tuesday afternoon—Auto tour to the Temple of Sinawava and The Narrows</i>				
<i>Wednesday—Trail trip to the rim of the Canyon or to Angel's Landing available.</i>				
Lv Zion Lodge.....	8.00 a.m.	5th day	Thu.	Automobile
<i>Stopping en route at Pipe Springs National Monument</i>				
Ar V. T. Ranch.....	5.00 p.m.	5th day	Thu.	Automobile
<i>Viewing thousands of deer in surrounding meadows</i>				
Lv V. T. Ranch.....	8.30 a.m.	6th day	Fri.	"
Ar Cape Royal.....	11.30 a.m.	6th day	Fri.	"
Lv Cape Royal.....	2.00 p.m.	6th day	Fri.	"
Ar Bright Angel Lodge.....	5.30 p.m.	6th day	Fri.	"
<i>Opportunity to view sunset and sunrise at the Canyon</i>				
Lv Bright Angel Lodge.....	9.00 a.m.	7th day	Sat.	Automobile
<i>Passing through Kaibab Forest, viewing Painted Desert in distance</i>				
Ar Bryce Canyon.....	6.00 p.m.	7th day	Sat.	Automobile
<i>Sunday—Exploring Bryce Canyon from the brink and along the trails</i>				
Lv Bryce Canyon.....	9.00 a.m.	9th day	Mon.	Automobile
Ar Cedar Breaks.....	11.30 a.m.	9th day	Mon.	"
<i>Luncheon and ample time to view this amphitheatre from North, East and South Rims</i>				
Lv Cedar Breaks.....	2.00 p.m.	9th day	Mon.	Automobile
Ar Cedar City.....	4.00 p.m.	9th day	Mon.	"
Lv Cedar City.....	8.30 p.m.	9th day	Mon.	U. P. System
Ar Salt Lake City.....	6.30 a.m.	10th day	Tue.	"

## In Salt Lake City One Day—Sightseeing Tour by Automobile Side Trip to Saltair Beach

Lv Salt Lake City.....	6.00 p.m.	10th day	Tue.	U. P. System
Ar Denver.....	12.15 noon	11th day	Wed.	"

## Automobile Tour of Denver

Lv Denver.....	4.00 p.m.	11th day	Wed.	D. & R. G. W. Ry.
Ar Colorado Springs.....	6.45 p.m.	11th day	Wed.	"
<i>Thursday—Auto trip to Pikes Peak in the morning. In the afternoon, the Circle Drive; or all day auto trip Circle Drive, Cripple Creek, Corley Mountain Highway.</i>				
Lv Colorado Springs.....	6.20 p.m.	12th day	Thu.	D. & R. G. W. Ry.
Ar Denver.....	8.50 p.m.	12th day	Thu.	"
Lv Denver.....	11.30 p.m.	12th day	Thu.	U. P. System
Ar Omaha.....	3.30 p.m.	13th day	Fri.	"
Lv Omaha.....	3.45 p.m.	13th day	Fri.	C. & N. W. Ry.
Ar Chicago.....	7.00 a.m.	14th day	Sat.	"





*Bryce Lodge—Exterior and Interior Views of Lodges.  
Typical Standard Accommodations in Southern Utah.*

## Cost of Complete Tours

From Chicago, returning to Chicago

Total Cost Rate, per person:

One person occupying double lower berth.....	\$248.86
One person occupying double upper berth.....	240.35
Two persons occupying one double lower berth (each).....	227.61
Two persons occupying one section (each).....	244.61
Compartment and drawing-room rates on application.	

The above rates cover all round-trip railroad transportation, standard sleeping car accommodations as indicated for the complete trip, all meals everywhere; automobile tour of and lodge accommodations in Zion National Park, Grand Canyon including trip to Cape Royal, Bryce Canyon and Cedar Breaks; accommodations at hotels and sight-seeing trips in Ogden, Cedar City, Salt Lake City, Denver and Colorado Springs; transfer of passengers and hand baggage to and from all hotels—in fact, every actual expense, furnishing "THE BEST OF EVERYTHING."

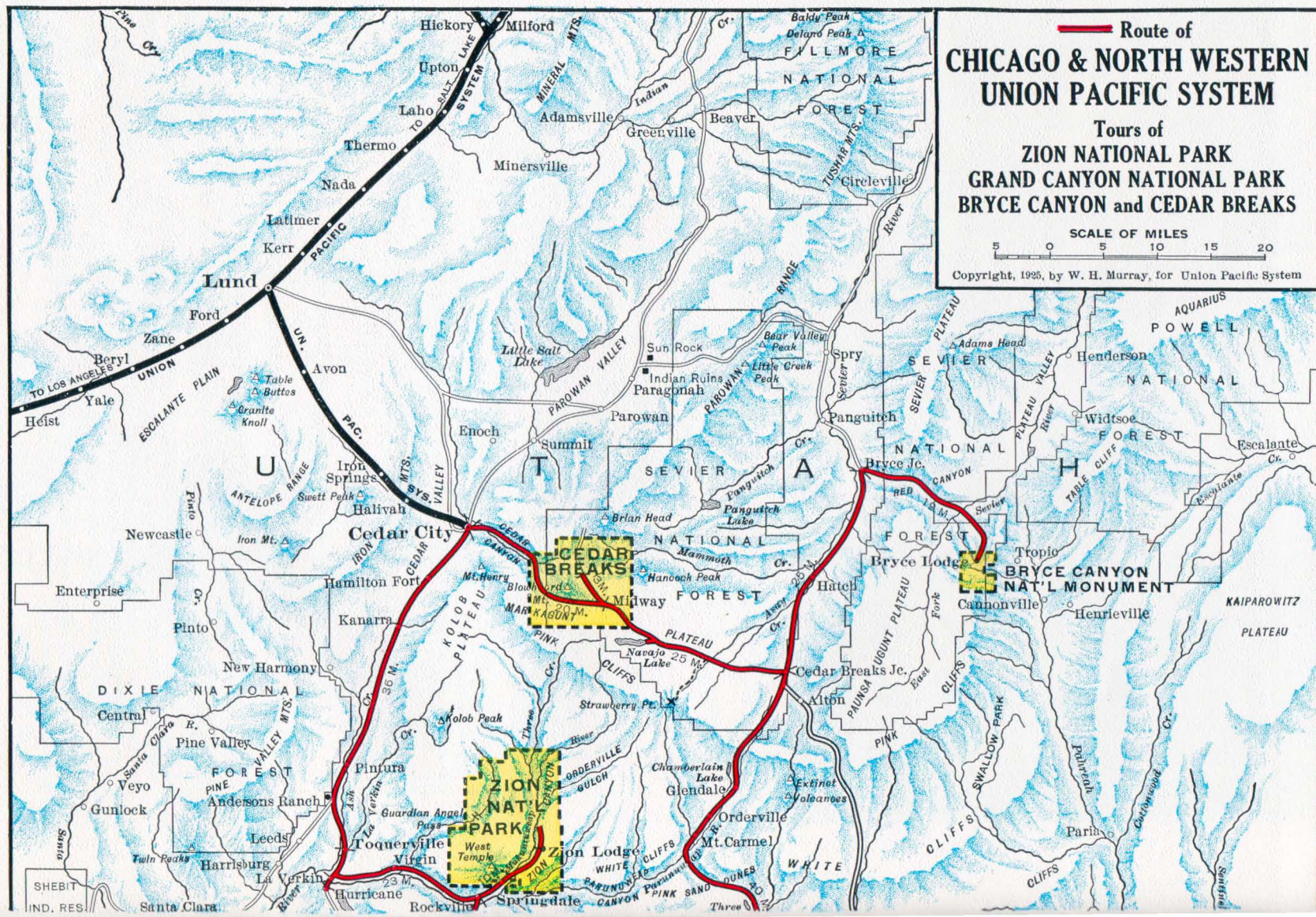
## Cost of Incomplete Tours

From and to points named

All tour privileges from Chicago to departure from Cedar City (Monday, 9th day) with railroad ticket only for return to Chicago.....	\$193.83
All tour privileges from Chicago to departure Salt Lake City (Tuesday, 10th day) with railroad ticket only for return to Chicago.....	202.33
All tour privileges from Chicago to arrival Denver (Wednesday, 11th day) with railroad ticket only for return to Chicago.....	213.83
All tour privileges from Chicago to departure Colorado Springs (Thursday, 12th day) with railroad ticket only for return to Chicago.....	232.48
All tour privileges from Omaha, returning to Omaha, including railroad ticket.....	227.18

Above rates based on one person occupying lower berth. Rates for other Pullman accommodations will be quoted on application.





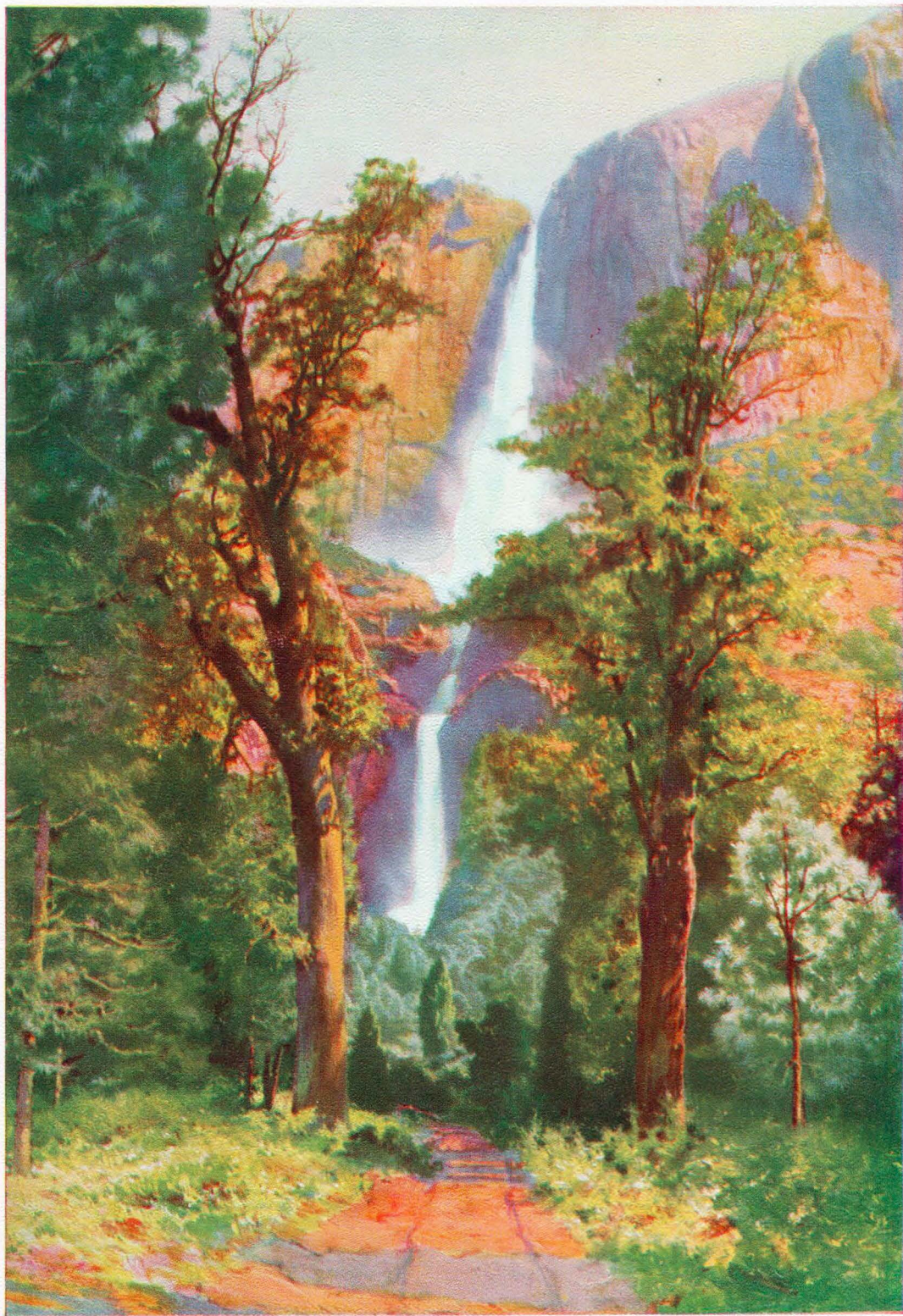


SCALE OF MILES

1  $\frac{1}{2}$  0







*Yosemite Falls, Almost a Half Mile High. Always Sublime, and Often Its  
Reverberations Are Heard Throughout the Valley*





*Glenwood Mission Inn, Riverside, California*

## California—The Land of Beauty and Romance

### Itinerary of the Tour

To know intimately the charm of the great outdoors, one must visit California. The very name is synonymous with scenic beauty. With her mountains and valleys and beaches, her lakes and rivers, her venerable missions and prosperous cities, California is rightfully proclaimed the pleasure ground of the American traveler. Whatever you desire most, in the way of living, awaits you in this Land of Sunshine. California calls you—*heed the call*.

NOTE—Those wishing to visit Grand Canyon and Zion National Parks, Cedar Breaks and Bryce Canyon in connection with a California tour should leave Chicago Saturday, June 18th, July 9th or July 30th. (For details see Pages 20 to 33.) Rates quoted on request.

Our "all-expense" escorted tours of California offer the exceptional opportunity of seeing the most of the great West in the shortest possible time and at the least expense. These tours leave Chicago from the Chicago & North Western Railway Terminal at 8.30 p.m., Saturday, June 25th, July 16th and August 6th, on the Gold Coast Limited, a strictly first-class all-Pullman train, going direct to Riverside, arriving 12.30 p.m., third day, via Union Pacific System.

### First Day in California (Third day en route)

Riverside is a brilliant gem among the cities of Southern California, and a visit to its Mission Inn, a hospice of distinction not equaled in the world, is alone worth the cost of a transcontinental journey. Here may be seen the peaceful patio; the Garden of the Bells, wherein are assembled bells of all nations and all ages; the Music Room with its great organ, The Oratory, The Refectory, Cloister Walk, and many more features which make Mission Inn a place worthy of many visits. Luncheon, dinner, lodging (room with bath), and breakfast at the Mission Inn.

### Second Day in California (Fourth day en route)

We leave by automobile parlor car for San Diego immediately after breakfast, viewing en route the University of California Citrus Experimental Farm, Lake Elsinore,





*San Diego—the Birthplace of California*

Temecula Valley, large olive orchards and Camp Kearney, arriving at the U. S. Grant Hotel at 12.30 p.m. After luncheon, leave U. S. Grant Hotel for trip to Tijuana, Mexico, via Coronado and the Silver Strand, returning through Balboa Park and residence sections. Dinner, lodging (room with bath), at the U. S. Grant Hotel.

### Third Day in California (Fifth day en route)

Our morning's ride from San Diego takes us past the Marine Barracks, Naval Training Station and Aviation Field to Inspiration Point on Point Loma; thence to Sunset Cliffs and La Jolla, through Torrey Pines Park to Del Mar, where lunch is served. From Del Mar the route to Los Angeles is via "El Camino Real," the King's Highway. Stop is made at San Juan Capistrano to visit the old mission. We arrive in Los Angeles at 6.00 p.m. and make our headquarters at the Biltmore Hotel (room with bath).

There is only one Los Angeles. In all the wide world there is not another spot where all the elements have so worked in harmony to give to man a site upon which could be built so marvelous a city.

Los Angeles, says one writer, should be revered, for it is sacred ground. Just outside the city stands the famous old mission of San Gabriel, one of the twenty-two erected by the Franciscan padres in their work of civilizing the Indians.

Twenty-three parks are listed but this signifies little in a city which in itself is a park. It is the hub from which radiate numerous sight-seeing trips.

### Fourth Day in California (Sixth day en route)

Our party leaves Los Angeles at 9.00 a.m. via Pacific Electric Ry. for Wilmington, where we board the steamer for a trip on the Pacific Ocean to Santa Catalina. This picturesque island, raising its mysterious peaks out of the shimmering sea, might well be another land. The little town of Avalon, clutching the steep sides of the island, is one of the famous resorts along the Pacific Coast. We land in time for luncheon at Hotel St. Catherine after which our party views the wonderful submarine gardens from glass-bottom boats. We leave Catalina at 4.00 p.m., returning to Los Angeles for dinner.

### Fifth Day in California (Seventh day en route)

Leave the Biltmore Hotel 9.30 a.m. for a drive through Spanish Town to Pasa-





*Avalon Bay—Catalina Island, California*

dena, visiting the Alligator and Ostrich Farms, viewing beautiful residential districts, Busch Gardens, Brookside Park, Rose Bowl, Eagle Rock, Glendale and arrive in Hollywood for lunch.

Hollywood—capital of the Moving Picture World, is one of the attractions of Southern California. Here we view the studios and homes of the most noted film stars and continue through the exclusive residential section of Beverly Hills, the National Soldier's Home grounds, and on along the ocean through Ocean Park and Venice, returning to the Biltmore for dinner.

### **Sixth Day in California (Eighth day en route)**

Sunday. The morning will be left open to "go as you please." This will afford an opportunity for you to go to church, visit friends, or just rest. Breakfast will be provided at the Biltmore Hotel; luncheon and dinner in the dining car. Train leaves Los Angeles at 12.30 p.m. for Yosemite National Park.

### **First Day in Yosemite National Park (Ninth day en route)**

We leave our sleepers at El Portal, the gateway to Yosemite at 7.00 a.m. and board the comfortable automobiles of the Yosemite Transportation System for a delightful ride to the new Ahwahnee Hotel, arriving in time for breakfast. All meals and lodgings at the new Ahwahnee Hotel, in Yosemite Valley. The morning is left open. A delightful tour of the Valley is arranged for the afternoon, viewing Yosemite Falls, Mirror Lake, Half Dome, Happy Isles, Camp Curry, Sentinel Rock, El Capitan and Bridal Veil Falls. In the evening we witness the celebrated "fire fall" and are entertained around the camp fire.

### **Second Day in Yosemite National Park (Tenth day en route)**

Leave Yosemite Valley by automobile at 7.30 a.m. The road follows the ridge to the well-known Inspiration Point, for a comprehensive view of Yosemite Valley. Our trip along the pine-clad mountains reaches its climax at Mariposa Big Trees, the most wonderful grove of Big Trees in the world. The automobiles make a complete tour of the grove, going through Wawona (Tunnel Tree), the most noted of them all. Stop is then made at Wawona for lunch. The afternoon's trip, of twenty-six miles, takes





*Pershing Square, Los Angeles*

us to Glacier Point, which is reached about 3.45 p.m. Here is located the famous overhanging rock, which is 3,200 feet directly above the floor of Yosemite Valley. Return is made to Yosemite Lodge in time for dinner.

### **Third Day in Yosemite National Park (Eleventh day en route)**

Wednesday is left open for hiking or resting. Many will wish to make horseback trips to points of interest "off the beaten path". So numerous are the waterfalls, sheer precipices, domes and spires in Yosemite Valley that your last day in the park will be a busy one if you wish to see them all. Our party will leave Yosemite Valley at 7.30 p.m. via automobile and arrive El Portal at 8.15 p.m. Sleepers will be boarded at 9.00 p.m. and we will arrive in San Francisco at 8.10 a.m. the following morning.

### **First Day in San Francisco (Twelfth day en route)**

Party will be transferred from the station to the Fairmont Hotel for breakfast. The morning will be left open to "go as you please". Many will wish to shop in the quaint Chinese stores. After luncheon we will take San Francisco's Thirty-mile Drive, including the business and residential sections of the city, Civic Center, Twin Peaks, Golden Gate Park, Cliff House, the Presidio, and Mission Dolores. Meals and lodging at the Fairmont Hotel (room with bath).

### **Second Day in San Francisco (Thirteenth day en route)**

Leave the hotel about 12.30 p.m. to connect with ferry and train for trip to the summit of Mount Tamalpais. From the summit wonderful views may be obtained of San Francisco Bay, San Francisco, Oakland, Berkeley, Alameda and the surrounding country. On the return to San Francisco a wonderful sunset can be seen through the Golden Gate. Meals and lodging at the Fairmont Hotel (room with bath).

### **San Francisco-Santa Cruz (Fourteenth day en route)**

Leave San Francisco 9.00 a.m., arrive Santa Cruz 12.30 p.m., visiting en route San Mateo, Burlingame, Hillsborough, Leland Stanford University at Palo Alto (one-half hour stop), and Santa Clara Valley, luncheon at Casa del Rey Hotel. After luncheon those wishing to may visit Santa Cruz Big Trees.





*From San Francisco's Hills Across the Bay to Oakland, Calif.*

### **Santa Cruz-Del Monte (Fifteenth day en route)**

Leave Casa del Rey Hotel, Santa Cruz, at 10.00 a.m., arrive Del Monte Hotel for luncheon. Afternoon take famous seventeen-mile drive, visiting historic Monterey, Pacific Grove and Carmel Mission, returning to Casa del Rey Hotel for overnight stop.

### **Santa Cruz-Oakland (Sixteenth day en route)**

Leave Santa Cruz 10.00 a.m., arrive Sainte Claire Hotel, San Jose, for luncheon. Leave Sainte Claire Hotel at 2.30 p.m. and proceed to Oakland via Mission San Jose, San Leandro and San Lorenzo, also visiting the University of California at Berkeley and the beautiful homes in Piedmont. Arrive Oakland Pier 6.00 p.m., passengers board train for Lake Tahoe. Dinner on dining car.

### **Lake Tahoe, California (Seventeenth day en route)**

We breakfast at picturesque Tahoe Tavern. Beautiful Lake Tahoe is the clearest and most brilliantly tinted body of water in the world. Rugged mountains covered with great pines and cedars and capped with snow add to the charm of this wonderful lake. A steamer ride on the lake included. We board our sleepers at 7.00 p.m. for Salt Lake City.

### **First Day in Salt Lake City (Eighteenth day en route)**

Before arriving at Salt Lake City, the capital of Utah, we cross Great Salt Lake, literally "going to sea by rail." We arrive at 3.40 p.m. and leave immediately for Saltair Beach, a new and modern resort on the shores of Great Salt Lake. There is ample time for a dip in this inland sea, whose water contains twenty per cent salt. Dinner at Saltair Beach. Our Headquarters will be the Hotel Utah. (Room with bath.)

### **Second Day in Salt Lake City (Nineteenth day en route)**

After breakfast at the Hotel Utah, we take a sight-seeing tour which includes the Mormon Temple, Tabernacle, Lion House, Beehive House, etc., and the modern business and residential districts. The trip terminates at the Mormon Temple grounds, where a concert is given on the famous organ, after which transfer is made to the Union Pacific Station, where we board the train for Chicago and the East.



## California Tours Leave Chicago as follows:

Tour C-4 Saturday, June 25th

Tour C-5 Saturday, July 16th

Tour C-6 Saturday, August 6th

### Detailed Schedule

Lv Chicago	8.30 p.m.	Sat., June 25, July 16, Aug. 6	C. & N. W. Ry.
Ar Omaha	9.30 a.m.	1st day Sun., " 26, " 17, " 7	
Lv Omaha	9.50 a.m.	1st day Sun., " 26, " 17, " 7	U. P. System
Ar Salt Lake City	2.35 p.m.	2d day Mon., " 27, " 18, " 8	
Ar Lund	10.06 p.m.	2d day Mon., " 27, " 18, " 8	

NOTE—Tours arranged to connect at Lund with Zion Tours (see Pages 20-33)

Ar Riverside	12.30 p.m.	3d day Tue., June 28, July 19, Aug. 9	
--------------	------------	---------------------------------------	--

### Six Days in Southern California

Lv Riverside	8.00 a.m.	4th day Wed., June 29, July 20, Aug. 10	Automobile
Ar San Diego	12.30 p.m.	4th day Wed., " 29, " 20, " 10	
Lv San Diego	9.30 a.m.	5th day Thu., " 30, " 21, " 11	
Ar Los Angeles	6.00 p.m.	5th day Thu., " 30, " 21, " 11	
Trip to Catalina Island		6th day Fri., July 1, " 22, " 12	
Automobile trip, Hollywood-Pasadena		7th day Sat., " 2, " 23, " 13	
Day of rest		8th day Sun., " 3, " 24, " 14	
Lv Los Angeles	12.30 p.m.	8th day Sun., July 3, July 24, Aug. 14	So. Pac. Lines
Ar El Portal	7.00 a.m.	9th day Mon., " 4, " 25, " 14	Y. V. R. R.
Lv El Portal	7.05 a.m.	9th day Mon., " 4, " 25, " 15	Automobile
Ar Yosemite Valley	7.50 a.m.	9th day Mon., " 4, " 25, " 15	

### Three Days in Yosemite National Park

Monday morning left "open". Tour of the Valley in the afternoon.

Lv Yosemite Valley	7.30 a.m.	10th day Tue., July 5, July 26, Aug. 16	Automobile
Ar Mariposa Grove Big Trees	10.45 a.m.	10th day Tue., " 5, " 26, " 16	
Lv Mariposa Grove Big Trees	11.45 a.m.	10th day Tue., " 5, " 26, " 16	
Ar Wawona	12.30 p.m.	10th day Tue., " 5, " 26, " 16	
Lv Wawona	1.30 p.m.	10th day Tue., " 5, " 26, " 16	
Ar Glacier Point	3.45 p.m.	10th day Tue., " 5, " 26, " 16	
Lv Glacier Point	4.30 p.m.	10th day Tue., " 5, " 26, " 16	
Ar Yosemite Valley	6.30 p.m.	10th day Tue., " 5, " 26, " 16	

Wednesday in Yosemite Valley—for hiking, riding or resting.

Lv Yosemite Valley	7.30 p.m.	11th day Wed., July 6, July 27, Aug. 17	Automobile
Ar El Portal	8.15 p.m.	11th day Wed., " 6, " 27, " 17	
Lv El Portal	9.00 p.m.	11th day Wed., " 6, " 27, " 17	Y. V. R. R.
Ar San Francisco	8.10 a.m.	12th day Thu., " 7, " 28, " 18	So. Pac. Lines

### Three Days in San Francisco

Morning left open. Afternoon 30-mile Drive	12th day	Thu., July 7, July 28, Aug. 18	Automobile
Morning left open. Afternoon Mt. Tamalpais Trip	13th day	Fri., " 8, " 29, " 19	
Lv San Francisco	9.00 a.m.	14th day Sat., " 9, " 30, " 20	
Ar Santa Cruz	12.30 p.m.	14th day Sat., " 9, " 30, " 20	
Trip to Santa Cruz Grove of Big Trees, in the afternoon.			
Trip to Del Monte and famous 17-mile drive	15th day	Sun., " 9, " 30, " 20	
Lv Santa Cruz	10.00 a.m.	16th day Mon., " 11, Aug. 1, " 22	
Ar Oakland Pier	6.00 p.m.	16th day Mon., " 11, " 1, " 22	
Lv Oakland Pier	7.00 p.m.	16th day Mon., " 11, " 1, " 22	So. Pac. Lines
Ar Tahoe	7.00 a.m.	17th day Tue., " 12, " 2, " 23	

### Spend Day at Lake Tahoe—Trip Around Lake

Lv Tahoe	7.00 p.m.	17th day Tue., July 12, Aug. 2, Aug. 23	So. Pac. Lines
Ar Salt Lake City	3.40 p.m.	18th day Wed., " 13, " 3, " 24	U. P. System
In Salt Lake City one day. Sight-seeing tour by automobile. Side trip to Saltair Beach.			
Lv Salt Lake City	1.05 p.m.	19th day Thu., " 14, " 4, " 25	U. P. System
Ar Omaha	7.40 p.m.	20th day Fri., " 15, " 5, " 26	
Lv Omaha	8.00 p.m.	20th day Fri., " 15, " 5, " 26	C. & N. W. Ry.
Ar Chicago	9.00 a.m.	21st day Sat., " 16, " 6, " 27	

### "All-Expense" Cost of Complete 21 Day Tour

From Chicago  
Returning to Chicago

Total—Cost Rate; one person occupying double lower berth	\$379.88
Total—Cost Rate; two persons occupying double lower berth (each)	350.63
Total—Cost Rate; one person occupying double upper berth	368.17
Total—Cost Rate; two persons occupying section (each)	374.03

Rates from other cities or for other Pullman accommodations, also rates for incomplete tour, for passengers wishing to remain in California, will be gladly furnished on application.



## Combination Tours

In the planning of our personally escorted tours, the schedules and dates were so arranged as to permit certain combinations that would offer economical vacation trips of unusual merit.

Certain combinations of tours are available that will afford the advantages of our "all-expense" service as low as \$143.73. Then for those wishing to spend a longer time we can arrange tours for three, four or five weeks.

We feature a few of the most popular short trips only:

### Yellowstone—Salt Lake City—Colorado

Leaving Chicago with a Yellowstone tour on Monday one has the opportunity of visiting Yellowstone National Park, spending a full day in Salt Lake City and returning through Colorado, stopping in Denver and Colorado Springs. This tour returns to Chicago on Saturday morning and is of twelve days' duration. Accommodations are of the same high grade as on all other tours operated by this Department.

Cost of Complete 12-Day Tours from Chicago, Returning to Chicago		Using Yellowstone Park Hotels	Using Yellowstone Park Lodges
Total—Cost Rate, per person:			
One person occupying double lower berth.....		\$196.01	\$187.01
One person occupying double upper berth.....		188.35	179.35
Two persons occupying one double lower berth (each).....		176.89	167.89
Two persons occupying one section (each).....		192.18	183.18

Compartment and drawing-room rates on application.

The above rates cover all round-trip railroad transportation, standard sleeping car accommodations as indicated for complete trip, all meals everywhere, automobile tour of and hotel or lodge accommodations in Yellowstone National Park; accommodations at hotels and sight-seeing trips in Ogden, Salt Lake City, Denver, and Colorado Springs; transfer of passengers and hand baggage to and from city hotels; in fact, every actual expense.

### Yellowstone—Salt Lake City

For those wishing to visit only Yellowstone National Park, but desiring the advantages of our "all-expense" tour service, we have arranged a ten-day tour. Under this plan one may leave Chicago with any of our regularly scheduled Yellowstone tours on Monday, Thursday or Saturday, remain with the tour through Yellowstone Park, and spend the day in Salt Lake City, leaving from Salt Lake City directly for Chicago.

Cost of Complete 10-Day Tours from Chicago Returning to Chicago		Using Yellowstone Park Hotels	Using Yellowstone Park Lodges
Total—Cost Rate, per person:			
One person occupying double lower berth.....		\$168.61	\$159.61
One person occupying double upper berth.....		162.25	153.25
Two persons occupying one double lower berth (each).....		152.73	143.73
Two persons occupying one section (each).....		165.43	156.43

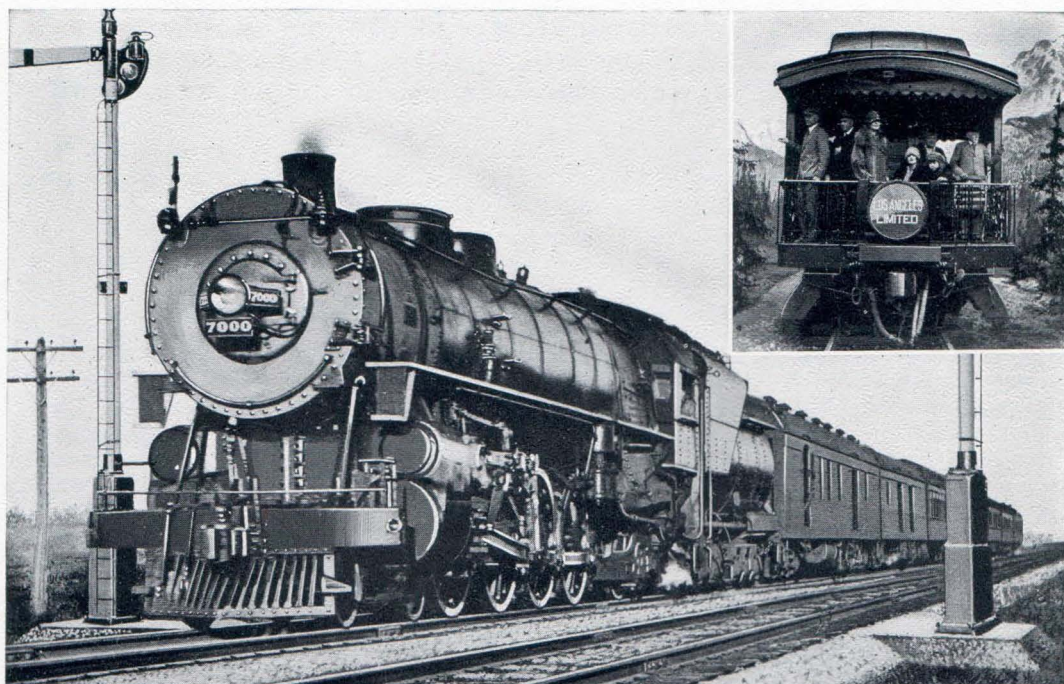
Compartment and drawing-room rates on application.

The above rates cover all round-trip railroad transportation, standard sleeping car accommodations as indicated for complete trip, all meals everywhere, automobile tour of and hotel or lodge accommodations in Yellowstone National Park; accommodations at hotels and sight-seeing trips in Ogden and Salt Lake City; transfer of passengers and hand baggage to and from city hotels; in fact, every actual expense.

### Zion—Grand Canyon—Rocky Mountain "Three National Parks Tour"

Persons desiring to make a tour of Rocky Mountain National Park, after visiting Zion National Park, may leave the Zion Tour at Salt Lake City and join the Yellowstone-Rocky Mountain Tour there the same day, proceeding with the party direct to Rocky Mountain National Park. Rates for this combination or any other extended tours will gladly be furnished upon request.





*A Tour Train on the Union Pacific System Protected by Automatic Electric Safety Signals*

## General Information

### Why You Should Join Our Tours

Our "all-expense" tour service offers you the great advantage of knowing at the outset the exact total cost of your trip. You are relieved of the anxieties and troubles of the independent traveler; all the details connected with your trip are arranged in advance and are carefully carried out by our representative with the party. You are, in fact, more independent in a real sense than the so-called independent traveler, as you are entirely free to enjoy to the fullest extent the pleasures of your trip.

### Personal Escort

Our tours are always under the charge of a courteous and experienced representative of the Department of Tours, who accompanies the party during the entire trip and who devotes his attention to the comfort and welfare of our passengers, relieving the individual of the usual travel cares.

### For Women Traveling Without Escort

If a woman be deterred from travel because she must travel alone, our escorted tours offer an opportunity to bridge this difficulty and enjoy the trip of a lifetime. Our travel representative will introduce her to the other members of our special train party, look after her tickets, transfers, etc., and insure her against vexation and annoyance. Hundreds of women, as individuals, have joined our tours. The arrangement offers an opportunity for a business man to send his wife, mother, sister or daughter on a safe, two-weeks' vacation amid congenial surroundings.

### How to Join Our Tours

Persons desiring to join one of our tours should send their names to be registered as early as possible, stating Pullman space required. Reservations will then be made and held until remittance reaches our office, when tour tickets will be issued. *Remittance should be made not later than seven days before departure of tour*, but when this is inconvenient, we will, upon request, hold reservations longer. Persons prevented from going may secure refund in full, provided reservations be canceled before 1.00 p.m. on date of tour departure.





*Our Escorted Tours are Served All Meals Enroute in These Spacious Dining Cars*

Be sure when purchasing railroad transportation that it reads via route of tour, which is as follows:

### **Y-Tours—Yellowstone-Rocky Mountain National Park**

Destination of railroad ticket should be West Yellowstone, Montana, and ticket should be routed via direct line to Chicago, thence via the Chicago & North Western Railway, Chicago to Council Bluffs, Iowa, and Union Pacific System, Council Bluffs, Iowa, to West Yellowstone, Montana, in both directions. Coupons should be included for the regular 4½-day tour of Yellowstone Park, including automobile and hotel accommodations at rate of \$54.00 higher than the fare to West Yellowstone, Montana. For passengers desiring lodge accommodations instead of hotel, rate for regular tour, including automobile transportation, is \$45.00 higher than fare to West Yellowstone, Montana.

### **Z-Tours—Zion and Grand Canyon National Parks— Bryce Canyon—Cedar Breaks**

The destination of railroad ticket should be Cedar City, Utah, and ticket should be routed via direct line to Chicago, thence via Chicago & North Western Railway, Chicago to Council Bluffs, Iowa, and Union Pacific System, Council Bluffs to Cedar City, Utah, in both directions. Side-trip coupons should be included, Denver to Colorado Springs and return.

### **C-Tours—California—including Yosemite National Park**

Destination of ticket should be San Francisco, California, and ticket should be routed on the going trip via direct route to Chicago, thence via Chicago & North Western Railway to Council Bluffs, Union Pacific System to Los Angeles and Southern Pacific Lines to San Francisco. Return route should be via Southern Pacific Lines to Ogden, Union Pacific System to Council Bluffs, Chicago & North Western Railway to Chicago, and direct route to home stations.

*Remittance for other tour privileges, including sleeping car accommodations, beginning and ending at Chicago, should be made by passengers direct to J. L. Burgar, Manager, Department of Tours, 148 South Clark Street, Chicago, Illinois.*





*Weber Canyon, Utah, seen from Union Pacific trains*

## Purchase Railroad Tickets at Your Home Station

Persons residing elsewhere than Chicago may join our tours at Chicago or any regular stopping point en route. While all tours start from Chicago and tickets may be purchased at our office there, passengers starting from other points should purchase railroad tickets from agent at their home stations, as described in the preceding paragraphs. Through tickets usually effect a saving in railroad fare; moreover, they include free transfer at Chicago, if reading through that city, and enable passengers to check baggage through to destination, thus avoiding expense and trouble at Chicago.

Complete advice concerning all ticketing arrangements will be given at time reservations are requested—in person or by mail.

## Service by Correspondence

With an intelligent understanding of the problems confronting the average person who wishes to secure the greatest benefits of a western vacation trip, the Department of Tours is prepared to give satisfactory service to persons making inquiry by mail. Please feel free to write fully and do not hesitate to ask any questions in connection with your journey. Our service makes travel easy, enjoyable and provides for the utmost in sight-seeing and recreation within the scope of your trip.

## Our Representative Will Call on You—If Desired

A representative of the Department of Tours will call on you, if you so desire, for the purpose of giving you all the information you require regarding our tours. He is courteous, well informed and a thorough "travel expert."

## Incomplete Tours—Combination Tours—Different Return Routes

Passengers who wish to leave our tours at points en route may do so by announcing such intention at time of booking, and charges will be adjusted accordingly. Those desiring to combine any part of one tour with any part of another (schedules and connections permitting) are at liberty to do so. Rates and schedules for the various combination trips will be quoted on application. Passengers wishing to extend their journey to other western destinations and enjoy the advantages of our escorted tour service, are invited to apply for further information.



## Stop-over Privileges

Railroad tickets are good to reach original starting point not later than October 31, 1927. Stop-overs may be had at all points en route. By making arrangements at time of booking, passengers may leave a tour at any stopping point and join any other tour for the completion of itinerary, or may travel independently from stop-over point.

## Varieties of Sleeping Car Accommodations

The rates from Chicago for the complete escorted tours cover the different assignments of lower and upper berths and sections in first-class standard Pullman cars.

Drawing-rooms and compartments may be had at greater cost. These rooms are always in demand and should be reserved as far in advance as possible. Information as to cost upon application.

## Baggage Arrangements

Unnecessary baggage is always a nuisance. Most persons agree that a roomy suitcase will hold everything essential for a comfortable trip through the National Parks. The free baggage allowance on the automobiles in the National Parks is 25 pounds (one regular suitcase); and on the railroads, 150 pounds of baggage is carried free. Passengers who may have a trunk or other baggage to be checked, should have their baggage checked at their home station to West Yellowstone, Montana, for the Yellowstone Tour; to Cedar City, Utah, for the Zion Tour; and to Los Angeles, for the California Tour.

The Department of Tours assumes no responsibility for baggage, but in event of damage, delay or loss, will do all in its reasonable power to lessen the hardship incurred.

Our escort will furnish you with special baggage tags, bearing your name and address, upon departure from Chicago. These tags should be attached to all baggage.

## Our Dining Car Service

In our spacious dining cars, the delicacies and substantial of the season are served in an efficient and skilful manner. All dining cars are equipped with electric lights and electric fans. A ventilating device in the kitchen removes all odors of cooking.

## Hotels and Meals

At all stop-over points we make our headquarters at the finest hotels for lodging and meals. The "all-expense" rates in connection with our tours include meals everywhere.

## Mail and Telegrams

Mail and telegrams addressed to members of Tours Y-1 to Y-35 should be forwarded as shown below, specifying "Member of North Western-Union Pacific Tour No. Y—."

West Yellowstone, Montana, care Ticket Agent, Union Pacific System.

Salt Lake City, Utah, care Hotel Utah.

Denver, Colorado, care Albany Hotel.

For members of Zion Tours Z-1 to Z-14, mail and telegrams should be addressed as follows, specifying "Member of North Western-Union Pacific Tour No. Z—."

Cedar City, Utah, care El Escalante Hotel.

Salt Lake City, Utah, care Hotel Utah.

Denver, Colorado, care Albany Hotel.

For members of California Tours C-4, C-5 and C-6, mail and telegrams should be addressed in care of the hotels as shown in itinerary, Page 35 to Page 40, specifying "Member of Chicago & North Western-Union Pacific Tour No.—."

## Wearing Apparel

Because of the altitudes in the National Parks cool weather is experienced, especially after sundown. You should take along fall weight clothing and a medium weight overcoat or sweater. A linen duster and a pair of colored glasses will prove invaluable while motoring; heavy, thick-soled shoes are a convenience. Take your camera.

## Note

Rates and train schedules quoted herein are subject to such change as tariff or operating requirements, which cannot be foreseen at time of issuance of this publication, may later demand.



## Tours and Tickets Everywhere

The functions of our Department are manifold. We prepare and furnish, without charge, schedules and routings for societies, clubs, fraternities and organizations who desire special-car or special-train trips to any part of the West.

We will gladly supply information and literature on Colorado, Utah, California, the Pacific Northwest, Alaska, Hawaii and all the National Parks.

If you are planning to travel independently, or to organize a party, please call on any of our listed representatives to assist you. A letter addressed to J. L. Burgar, Manager, 148 South Clark Street, Chicago, Illinois, will receive immediate and careful attention. Telephone Dearborn 2323.



### Escorted Tours

YELLOWSTONE—ROCKY MOUNTAIN NATIONAL PARKS  
ZION—GRAND CANYON NATIONAL PARKS  
CALIFORNIA (INCLUDING YOSEMITE NATIONAL PARK)  
PACIFIC NORTHWEST—ALASKA—CANADIAN ROCKIES

ARE CONDUCTED BY THE

## DEPARTMENT OF TOURS

MAINTAINED BY

CHICAGO & NORTH WESTERN RY.  
UNION PACIFIC SYSTEM

No other western railroad has employed for twenty-seven years a staff of travel experts who spend their entire time in arranging attractive vacation tours that provide—

*"The Best of Everything"*

ADDRESS ALL COMMUNICATIONS TO

J. L. BURGAR, Manager  
148 S. Clark Street, Chicago, Ill.

### Department of Tour Representatives

CHICAGO, ILL.	148 S. Clark Street	Tel. Dearborn 2323
C. E. Burgess, Chicago Representative	I. H. Potter, Passenger Agent	
H. B. Northcott, Traveling Agent	W. Hetherington, Passenger Agent	
Jos. Muller, City Passenger Agent	W. H. Beindorff, Passenger Agent	
LOS ANGELES, CAL.	306 Central Bldg.	Tel. Vandike 7076
C. B. Johnson, Cal. Representative		
BUFFALO, N. Y.	202 Ellicott Square Bldg.	Tel. Seneca 4653
J. M. Higgins, Traveling Agent		
CINCINNATI, OHIO	202 Dixie Term'l Bldg.	Tel. Main 3999
C. W. Jackson, Traveling Agent		
CLEVELAND, OHIO	939 Union Trust Bldg.	Tel. Main 3354
C. S. Stegeman, Traveling Agent		
DETROIT, MICH.	619 Transportation Bldg.	Tel. Main 7260
H. P. Dickson, Traveling Agent		
INDIANAPOLIS, IND.	308 Merchants Bk. Bldg.	Tel. Riley 3110
C. A. Stoddard, Traveling Agent		
PITTSBURGH, PA.	202 Oliver Bldg.	Tel. Atlantic 5215
W. Evans, Traveling Agent		
MILWAUKEE, WIS.	99 E. Wisconsin Ave.	Tel. Broadway 4980
C. E. Frain, Traveling Agent		
ST. LOUIS, MO.	2053 Railway Exch. Bldg.	Tel. Garfield 1304
V. J. Schmittroth, Traveling Agent		



## Ticket and Information Offices

### Chicago & North Western Ry.

ATLANTA, GA.—317 Healey Bldg.  
J. H. Schultz, General Agent.  
F. A. Haas, Traveling Agent.

BOSTON, MASS.—310 Old South Bldg., 294 Washington St.  
R. H. Miller, General Agent.  
C. W. Gray, Traveling Agent.  
R. Seamonds, Traveling Agent.  
T. A. Daly, City Agent.

BUFFALO, N. Y.—202 Ellicott Square, 295 Main St.  
J. P. Fox, General Agent.  
W. W. Pontious, Traveling Agent.  
W. H. Kreiling, Traveling Agent.  
J. F. Swartout, City Agent.

CHICAGO, ILL.—148 S. Clark Street.  
H. G. Van Winkle, General Agent Passenger Dept.  
N. M. Kean, City Agent.  
E. E. Bogardus, City Agent.  
E. D. Parmelee, City Agent.  
Madison Street Terminal, Canal and Madison Sts.  
N. A. Hersether, Passenger & Ticket Agent.

CINCINNATI, OHIO—202 Dixie Terminal Bldg., 49 E. 4th St.  
E. J. Carland, General Agent.  
A. M. Linz, Traveling Agent.  
J. T. Hall, Traveling Agent.  
L. A. Uvaas, Traveling Agent.  
E. A. Knauber, City Agent.

CLEVELAND, OHIO—939 Union Trust Bldg., 925 Euclid Ave.  
H. E. Saunby, General Agent.  
S. L. Howells, Traveling Agent.  
R. C. Roberts, Traveling Agent.  
L. J. Jensen, City Agent.  
G. B. Grimes, City Agent.

DES MOINES, IA.—216 Royal Union Life Bldg.  
W. F. Winkrantz, General Agent.  
C. A. Wingett, City Agent.

DETROIT, MICH.—619 Transportation Bldg.  
A. E. Ladwig, General Agent.  
W. L. Stannard, Traveling Agent.  
W. F. Schliet, Traveling Agent.  
F. J. Herhusky, Traveling Agent.  
W. W. Creighton, Traveling Agent.  
E. A. Wicke, City Agent.  
S. Nelson, Jr., City Agent.

GREEN BAY, WIS.  
R. C. Kerr, Division Freight and Passenger Agent.

INDIANAPOLIS, IND.—308 Merchants Bank Bldg.  
V. A. Hampton, General Agent.  
G. H. Dumas, Traveling Agent.  
R. L. Dickson, Traveling Agent.  
S. M. Smith, City Agent.

MADISON, WIS.  
A. W. Bower, Division Freight and Passenger Agent.

MILWAUKEE, WIS.—99 E. Wisconsin Avenue.  
E. P. Rueter, General Agent Pass'r Dept.  
Carl Carlson, City Agent.  
F. E. Reuter, City Agent.

NEW ORLEANS, LA.—1215 Hibernia Bank Bldg.  
C. S. Evenson, General Agent.

NEW YORK, N. Y.—475 Fifth Ave.  
F. G. Fitz-Patrick, General Agent.  
A. O. Olson, Traveling Agent.  
S. A. Trussell, Traveling Agent.  
J. W. McNulty, Traveling Agent.  
W. G. Babel, City Agent.  
N. H. Jones, City Agent.

PEORIA, ILL.—213 Jefferson Bldg., 200-08 S. Jefferson St.  
F. B. Martin, General Agent.  
R. E. Williams, Traveling Agent.

PHILADELPHIA, PA.—214 Pennsylvania Bldg.  
R. O. Small, General Agent.  
C. N. Hale, Traveling Agent.  
T. J. Coen, Traveling Agent.  
J. G. Thomas, Traveling Agent.  
C. A. Miller, City Agent.

PITTSBURGH, PA.—202 Oliver Bldg., 535 Smithfield St.  
J. J. Livingston, General Agent.  
E. W. Fiala, Traveling Agent.  
R. W. Phelps, Traveling Agent.  
H. C. Duval, City Agent.

ST. LOUIS, MO.—205 Boatmen's Bank Bldg., 314 N. Broadway  
H. L. Hammill, General Agent.  
H. A. Hancock, Traveling Agent.  
E. C. Crow, Traveling Agent.  
C. D. Cook, City Agent.

SIoux CITY, IOWA.—522 Nebraska St.  
M. M. Betzner, General Agent.  
C. A. Brown, City Agent.

**C. A. Cairns**  
Passenger Traffic Manager  
Chicago, Ill.

**A. R. Gould**                      **M. R. Leahy**  
Asst. Pass'r Traffic Mgr.    Gen'l Passenger Agent  
Chicago, Ill.                      Chicago, Ill.

### Union Pacific System

ATLANTA, GA.—1232 Healey Bldg., 49 N. Forsyth Street.  
W. C. Elgin, General Agent.  
G. J. Garmon, Traveling Frt. and Pass'r Agent.  
P. S. Smith, Traveling Freight and Pass'r Agent.

BIRMINGHAM, ALA.—742 Brown-Marx Bldg.  
J. H. Doughty, General Agent.  
W. B. Markham, Traveling Freight and Pass'r Agent.

BOSTON, MASS.—207-08 Old South Bldg., 294 Washington St.  
Willard Massey, General Agent.  
T. C. Wallace, Traveling Freight & Pass'r Agent.  
M. W. Coonerty, Traveling Freight & Pass'r Agent.  
G. A. Oulton, Freight and Passenger Agent.  
C. H. Saltmarsh, Traveling Freight & Pass'r Agent.  
T. W. Fuller, City Passenger Agent.

CHICAGO, ILL.—6 S. La Salle St., Otis Bldg.  
G. R. Lemmer, General Agent Passenger Dept.  
E. E. Robertson, Traveling Passenger Agent.  
W. Warner, City Passenger Agent.  
Donald R. Eck, City Passenger Agent.  
C. V. Wedell, Passenger Agent.

CINCINNATI, OHIO—705 Dixie Terminal Bldg.  
W. H. Connor, General Agent.  
J. Stanley Orr, District Passenger Agent.  
W. A. Looney, City Passenger Agent.  
F. B. Swope, Traveling Freight and Passenger Agent.  
J. R. Livsey, Traveling Freight and Passenger Agent.  
F. G. Busch, Traveling Freight and Passenger Agent.

CLEVELAND, OHIO—941 Union Trust Bldg.  
W. H. Benham, General Agent.  
J. L. Balmer, Traveling Freight and Passenger Agent.  
Edwin H. Allen, Traveling Freight and Passenger Agent.  
Richard E. Burt, City Passenger Agent.  
W. G. Peterjohn, Traffic Agent.

DES MOINES, IA.—407 Equitable Bldg.  
D. M. Shrenk, General Agent.  
V. C. Kuhne, Traveling Passenger Agent.  
R. L. Henry, Traveling Freight and Passenger Agent.

DETROIT, MICH.—508 Transportation Bldg.  
A. R. Malcolm, General Agent.  
J. G. Howey, Traveling Freight and Passenger Agent.  
W. W. Hott, Traveling Freight and Passenger Agent.  
L. G. Meder, City Passenger Agent.  
C. W. Nethercot, Traffic Agent.  
J. E. Ronan, Traffic Agent.

KANSAS CITY, MO.—805 Walnut St.  
Seth C. Rhodes, General Agent, Passenger Department.  
E. M. Mattes, City Passenger Agent.

MILWAUKEE, WIS.—703 Straus Bldg., 230 W. Wisconsin Ave.  
K. T. Mindemann, General Agent.  
G. J. Buckingham, Traveling Passenger Agent.  
S. V. Perkins, City Passenger Agent.

NEW ORLEANS, LA.—1001 New Orleans Bank Bldg.  
R. A. Peters, General Agent.  
R. D. Tate, Traveling Freight and Passenger Agent.

NEW YORK, N. Y.—205 Farmers Loan and Trust Bldg.  
475 Fifth Ave.  
J. B. DeFriest, General Agent.  
J. W. Carter, District Passenger Agent.  
H. L. Gardner, City Passenger Agent.  
G. I. Giles, City Passenger Agent.  
J. M. Quade, Passenger Agent.  
309-10 Stewart Bldg., 280 Broadway.  
D. C. Fisk, Jr., Traveling Freight and Passenger Agent.  
C. J. Smith, Traveling Freight and Passenger Agent.  
W. V. May, Traveling Freight and Passenger Agent.  
H. C. Yenger, Traveling Freight and Passenger Agent.

OMAHA, NEB.—1323 Farnam St.  
L. Beindorf, General Agent, Passenger Department.  
A. K. Curtis, City Passenger Agent.  
U. P. Bldg., 1416 Dodge Street.  
F. E. Watkins, Traveling Passenger Agent.  
E. C. Mallon, Traveling Passenger Agent.  
V. B. Smith, Depot Passenger Agent.

PHILADELPHIA, PA.—508 Commercial Trust Bldg.  
H. L. Lauby, General Agent.  
D. H. Voltz, Traveling Freight and Passenger Agent.  
Gordon G. Noble, Traveling Freight and Passenger Agent.  
J. L. Brechin, Traveling Freight and Passenger Agent.  
T. M. J. Fritz, City Passenger Agent.

PITTSBURGH, PA.—216 Oliver Bldg.  
John D. Carter, General Agent.  
Edward Emery, District Passenger Agent.  
G. O. Hassenfritz, Traveling Freight and Pass'r Agent.  
Gaylord F. Allen, Traveling Freight and Pass'r Agent.  
Gregg W. Cook, City Passenger Agent.

ST. LOUIS, MO.—2053 Railway Exchange Bldg., 611 Olive St.  
J. L. Carney, General Agent.  
E. R. Field, Traveling Freight and Passenger Agent.  
J. W. McBurney, Traveling Freight and Pass'r Agent.  
J. M. Rebmann, City Passenger Agent.

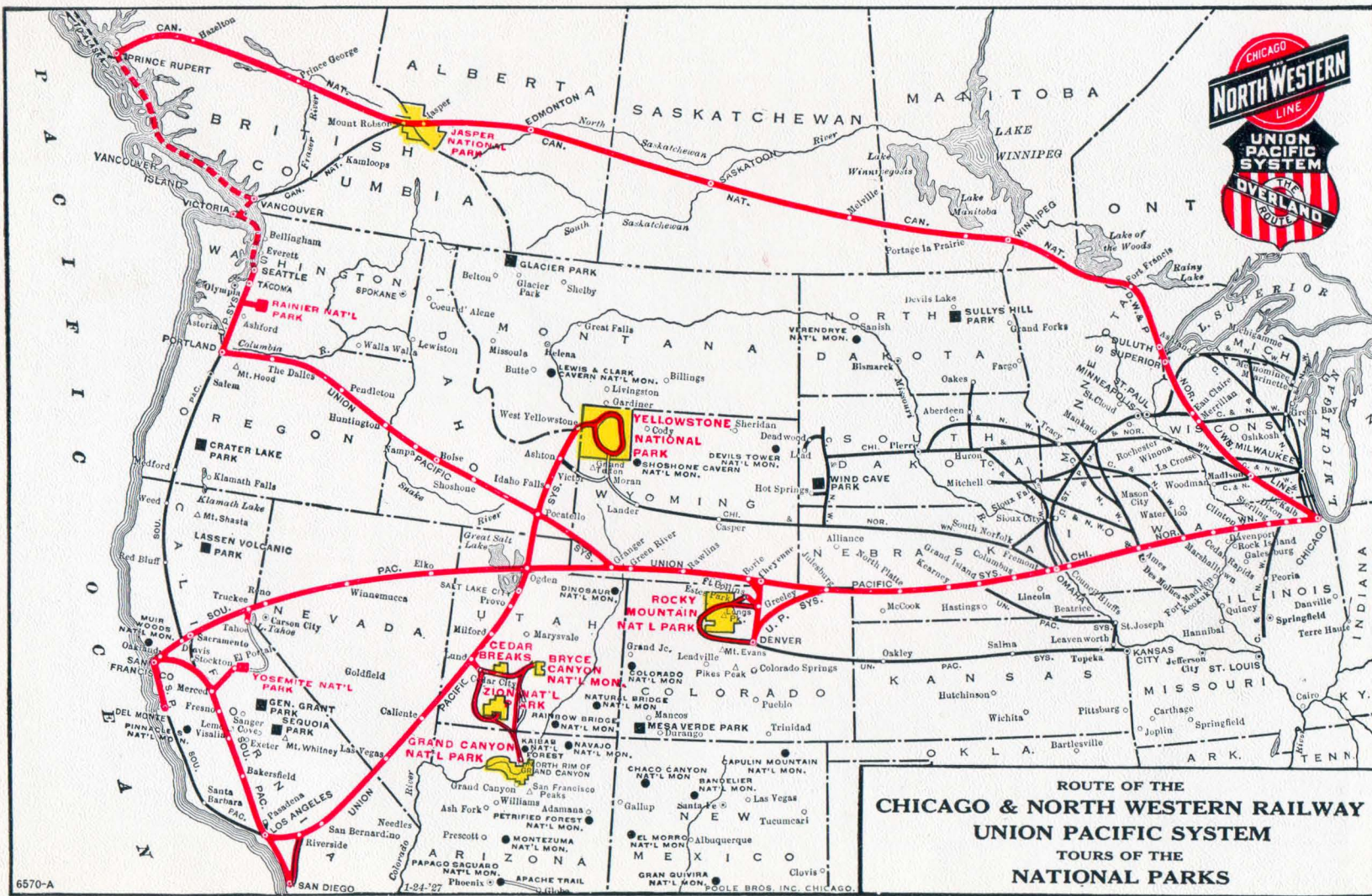
TORONTO, ONT.—Geo. W. Vaux, Gen'l Agent, 69 Yonge St.

**W. S. Basinger**  
Passenger Traffic Manager, Omaha, Neb.

**C. J. Collins**                      **D. S. Spencer**  
Gen'l Pass.Agt.Omaha    Gen'l Pass.Agt.,Salt Lake  
**W. K. Cundiff**                      **Geo. R. Bierman**  
Gen'l Pass.Agt.,Portland    Gen'l Pass.Agt.Los Angeles

Page Forty-seven





6570-A







