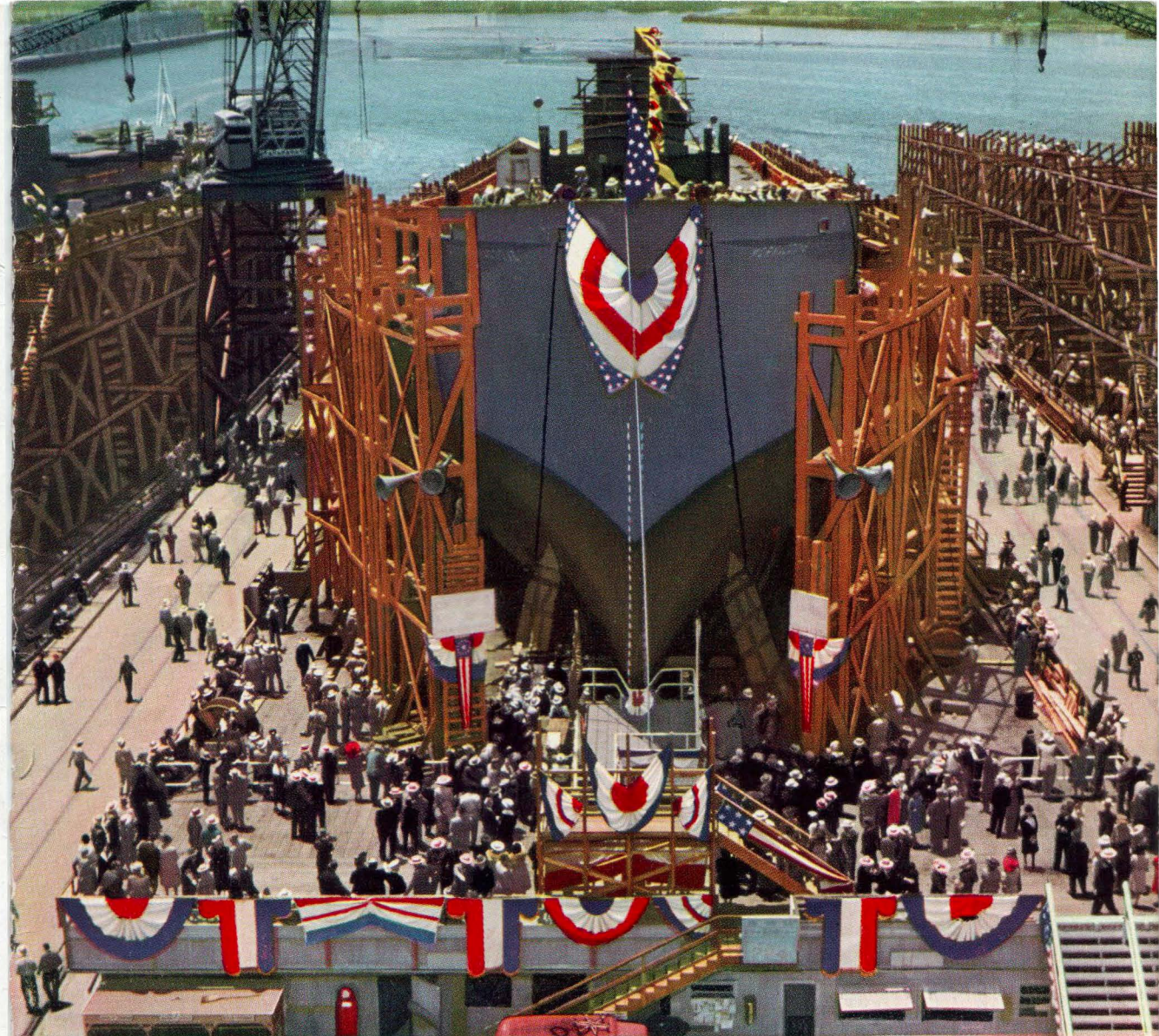




PRIDE OF WORKMANSHIP

A SHIP launching is an occasion for pardonable pride on the part of every person, man or woman, who drove a rivet, sawed a board, or had anything else to do with completing the job. When some lucky lady smashes that bottle against the hull, even old "Poker Face," the timekeeper, can't help but feel a slight surge of emotion. And rightly so. Any man worth his salt has pride in good workmanship. That's certainly true of railroaders. We're quite sure that every Union Pacific employee—in shops, offices, stations, or on the rails—realizes the need for topnotch efficiency and takes pride in the fact that his railroad, with his help, is doing a bangup job of transporting vital war materials and trainloads of troops.



ON RAILS—TO SHIPS! UNION PACIFIC HANDLES GREAT CARGOES FOR MERCHANTMEN AND MATERIAL FOR THEIR CONSTRUCTION



UNION PACIFIC RAILROAD

ROAD OF THE STREAMLINERS AND THE CHALLENGERS

Luncheon

A La Carte

CHILLED TOMATO JUICE 20 FRUIT COCKTAIL 40
TODAY'S SOUP (CUP) 25; TUREEN 35

AVAILABLE FRESH FISH 85 DOMESTIC SARDINES 60

GRILLED LAMB CHOPS ON TOAST (2) 1.00; (1) 55
CHARCOAL BROILED SELECT SIRLOIN STEAK 1.50
CORNED BEEF HASH WITH POACHED EGG 85

BACON AND EGGS 90 HAM AND EGGS 90

BACON 80; HALF PORTION 45

HAM, FRIED OR BROILED 80; HALF PORTION 45

BOILED, SCRAMBLED, FRIED OR SHIRRED EGGS (2) 35

POACHED EGGS ON TOAST (2) 55

PLAIN OMELET 50 SPANISH OMELET 75

HAM, CHEESE OR JELLY OMELET 70

HASHED BROWNED OR SAUTE POTATOES 20

STRING BEANS 20

GARDEN SPINACH WITH EGG 25

GREEN PEAS 20

ASPARAGUS ON TOAST 45

HEAD LETTUCE 35

THE SALAD BOWL 40

SLICED TOMATO 40

CHICKEN SALAD 95

POTATO SALAD 30

SANDWICHES: CHICKEN 60; CHEESE 30; TONGUE 30

BREAD AND BUTTER 15

TOAST, DRY OR BUTTERED 15

MILK TOAST 35

CREAM TOAST 50

ICE CREAM 25; WITH WAFERS 35

CANNED FRUITS 30

SELECTION OF DOMESTIC CHEESE, TOASTED CRACKERS 30

MILK (IND. BOTTLE) 15

BUTTERMILK 15

POSTUM (POT) 25

COFFEE (POT) 25

COCOA (POT) 25

TEA (POT) 25

DECAFFEINATED COFFEE (POT) 25

All prices listed are our ceiling prices or below. By office of Price Administration regulation, our ceilings are our highest prices from April 4, 1943, to April 10, 1943. Records of these prices are available for your inspection at the office of the Manager, Dining Car & Hotel Department.

H. A. HANSEN, Manager Dining Car and Hotel Department, Union Pacific Railroad Co., Omaha, Nebr.

Parents May Share Their Portion with Children Without Extra Charge.
Prices Shown Subject to Sales Tax in States Where Applicable.