

*The
Portland
Rose*

*Named in Honor of Portland
"The City of Roses"*

The Portland Rose

A TRIUMPH IN TRAIN COMFORT

- CHICAGO & NORTH WESTERN RY.
- UNION PACIFIC RAILROAD » »

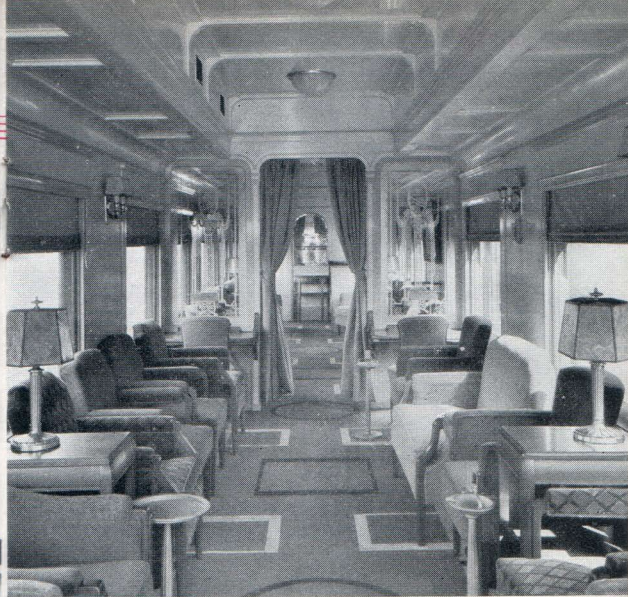




The Portland Rose

WHEN you are aboard this Beautiful Train, you'll instantly find that the Portland Rose is a distinct departure from other trains. A house may be built for comfort alone. Or into it may be built individuality and comfort—the individuality of the owner. And what a difference there is!

So it is with a train.

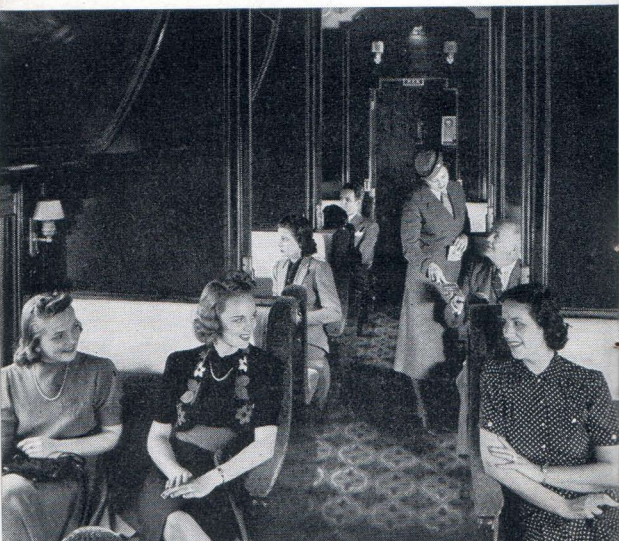


The Portland Rose was planned to give full measure of comfortable transportation. So are many other trains. But there similarity ends. For into the Portland Rose has been built the very spirit of Portland for which it is named. Its luxurious interior reflects the beauty of the "City of Roses", the great Pacific Northwest and the Columbia River along which it travels for 200 miles.



The Portland Rose

The entire train is completely air-conditioned from coaches, Pullman tourist and standard sleeping cars to dining and Club-Lounge cars. The temperature is thermostatically controlled and humidity properly balanced to provide uniform comfort regardless of the weather outside. With windows



which are sealed against dust, dirt, excessive noise, the cars are clean as a whistle on the entire trip.

If you sleep well anywhere, you'll have an opportunity to excel yourself in one of the spacious, comfortable berths with coil spring mattresses and



The Portland Rose

fine snow-white linens in the Portland Rose Pullmans.

The high vaulted cars afford excellent ventilation. The ceiling-length head boards between sections insure a great measure of privacy. The large dressing rooms are a treat.



In the complete privacy of an excellently appointed drawing room, compartment, or bedroom the temperature may be adjusted to your individual wishes. Every convenience is at your command and—even to having your meals served in your room.

And here, too, comfort blends with beauty—in tasteful harmony of color and soft shaded lights.



The Portland Rose

BARBER SHOP

Men

Hair Cut50
Shave (With electric razor if desired)25
Beard Trimmed35
Hair Singe25
Facial Massage50
Facial Massage (Boncilla)	1.00
Plain Shampoo50
Shampoo, Egg, Oil or Tonic75
Hair Tonics25

Women

Hair Bob75
Hair Bob—Trim50
Neck Clip25
Plain Shampoo	1.00
Shampoo, Egg, Oil or Tonic	1.25
Hair Tonics25



In the Club-Lounge car, you'll find all the services and conveniences listed on these pages, and at the nominal charges shown.



The Portland Rose

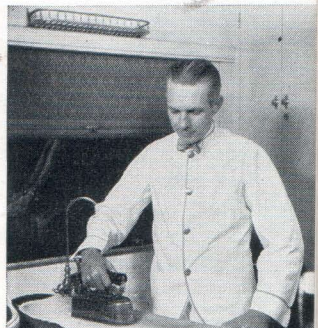
VALET SERVICE

Trousers (Pressing)35
Vest25
Coat65
Suit	1.00
Overcoat	1.00
Woman's Coat	1.00
Woman's Suit	1.25
Woman's Skirt75
Woman's One-Piece Dress	1.00

The following Toilet Articles may be purchased from the Barber or Attendant:

Tooth Brush40
Tooth Paste or Powder40
Shaving Cream25
Talcum Powder25
Mouth Antiseptic25
Styptic Stick10
Pocket Comb25
Razor Blades (5s)25

VALET service from 6:30 in the morning to midnight. The porter of the sleeping car will arrange for this service.





The Portland Rose

DOES restful comfort in beautiful surroundings appeal to you? Then you're going to be enthusiastic about the "Portland Club", the luxurious Club-Lounge car of the Portland Rose.

At the forward end of the car is the sun parlor. Wide, low windows afford an excellent view. Colorful sunroom furniture completes the cheery effect.

In the two parlor lounges the full beauty of this exquisite car becomes apparent. Deep seated arm chairs, sofas, divans. Convenient tables, writing desks. Softly shaded lamps. A perfect harmony of blended color and decoration.

Radio and current issues of popular magazines and daily newspapers add to the enjoyment of the guest.

Adding still further to one's enjoyment of the dainty perfection of the "Portland Club" car is the buffet service. In snappy Eton jacket, the smiling attendant who converts your wishes into realities, is ever alert to respond to your call . . . whether it's refreshment, smokes or playing cards that is the fancy of the moment.

Champagnes, wines, liquors and beer are on sale in states where such sale is



not prohibited by law. Ordinary fountain beverages and dishes are available.

A prolonged business meeting . . . a hurried packing . . . a dash for the train. No time for a shave or hair-trim. But what of that? Here's the Portland Rose barber shop. Here's a man of skill with all the equipment of his craft at his disposal including electric razor service. Can ladies and children be served, too? They certainly can.

Clothes need pressing? Hand them



The Portland Rose

to the porter at night and you'll awake
in the morning to find them waiting.

It isn't only what you eat . . . it's where you eat, and how it's served, that determines your enjoyment of a meal.

No fresher or more delicious food could be found than is served on the Portland Rose where the menu offers many choice Pacific Northwest products . . . no more delightful surroundings than the charming dining car, where the



mellow light of shaded lamps is reflected on the exquisitely decorated dinner-ware . . . no more efficient and friendly service. No wonder the call to the diner meets with such quick response. Special service is gladly arranged for those who may be on restricted diet.

The air-conditioned coaches on the Portland Rose are of the very latest type and reflect the same appreciation for



The Portland Rose

the comfort of the traveler. And, North Western—Union Pacific's many new economies and comforts of coach travel, make this the greatest of all travel bargains.

Fresh, clean pillows furnished free to coach travelers and lights softly dimmed at night insure restful sleep.

Our low-cost meals served in the dining car make it possible to dine well for 90 cents a day. Breakfasts at 25c may include scrambled eggs and two strips of bacon, hot breakfast rolls or toast, coffee, tea or milk, or an alternate breakfast selection consisting of any available fruit or juice and cereal, hot rolls or toast, coffee, tea or milk may be made. Luncheons at 30 cents, dinners 35 cents, are equally attractive and in addition there are low a la carte prices.



The Portland Rose

Registered Nurse-Stewardess service is available without charge, on the Portland Rose. Each Stewardess is a graduate nurse from a leading hospital and is selected for this service on a four-point basis; capability, character, personality and appearance.

Most important among the duties of the Stewardess is the care of small children. She prepares food formulas, warms the milk bottles and looks after the tiny ones while mother is resting or enjoying "meals that appeal" in the Diner. The Nurse-Stewardess also acts as personal attendant to elderly people . . . sees that they are comfortable and does her utmost to make the trip enjoyable.





The Portland Rose

SLEEPING car patrons traveling at intermediate fares enjoy unusual comfort en route on the Portland Rose. The Pullman tourist car of today is the standard Pullman of yesterday with the added feature of air-conditioned comfort. Patrons in these cars may also take advantage of our popular low cost meals or the regular dining car service as preferred. Like the coach passengers, their lesser-cost service, however, does not entitle them to the privileges of the Lounge car west of Green River.

