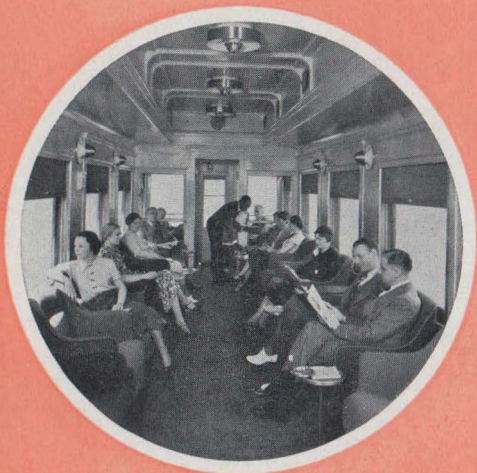


The
Pony Express

SALT LAKE CITY • DENVER

U N I O N P A C I F I C R A I L R O A D

The Pony Express



OVERNIGHT BETWEEN
SALT LAKE CITY • DENVER

The Pony Express



TRAIN TRAVEL

is the ideal transportation. All ages and classes find it comfortable, fast and, above all, *safe*.

AIR-CONDITIONED COMFORT



HOT summer suns, bitter winter winds, heavy snows and driving rains or dust storms, mean nothing to a traveler on the Pony Express. Cool, clean air-conditioned cars are perfect protection against inclement weather.

You are comfortable at all times—when relaxing in the modern Coaches, enjoying delicious meals in the Dining Car, listening to the radio in the Club Observation Car, or sleeping soundly in the Pullman Sleeping Cars.

The Pony Express



YOUR PULLMAN IS YOUR HOME

NIGHT or day, you feel perfectly at home in a Pony Express Pullman Car. Richly upholstered seats are restful and spacious. High partitions between sections give a feeling of privacy. Footsteps are subdued by the heavy carpeting. If you would like a pillow, foot rest or a portable table just touch the convenient bell and a porter is at your elbow.

And, of course, compartments and drawing-rooms are available for those who desire the utmost in travel convenience.

For slight additional cost, one may procure a section. The upper berth is not put into use, thus allowing extra space and head-room in the lower.

The Pony Express



DRAWING ROOMS and COMPARTMENTS for PRIVACY.COMFORT.CONVENIENCE

FOR more than one person—or even when traveling alone, for that matter—a Drawing-room or Compartment offers everything that anyone could wish for in the way of travel comfort. All the conveniences are at hand. No need to leave the privacy of your room.

Should you wish to have the temperature readjusted, a table for bridge or writing, playing-cards, telegraph blanks or refreshments, just ring for the porter. Meals also can be taken in your room unless you prefer to visit the Dining Car.

The excellently appointed drawing rooms and compartments offer complete privacy.

The Pony Express



IT'S A PLEASURE TO EAT IN "THE DINER"

THERE'S a fascination about having meals in the Dining Car—particularly so when the meals are so delectable and the car interior so richly furnished as on the Pony Express.

Crisp, snowy linen, sparkling silver and china and the deft, attentive service of a courteous personnel make each meal a "high-light" of the journey.

Seen through the wide windows, a moving scenic panorama adds an interesting touch to daytime repasts. And when the meal is over, a visit to the Club Observation Car will prove a pleasant relaxation.

Meals at unusually low prices or more elaborate a la carte service are available on the Pony Express.

The Pony Express



Visitors to the Club Observation Car are instantly attracted by its harmonious beauty. The "curly maple" finish of the walls has the appearance of natural wood. To match this finish the interior decorators selected a brown and wine Wilton carpeting and a chamois (or tan) upholstery of needle point design for

CLUB OBSERVATION CAR



chairs and settees. Aluminum venetian blinds add a modern touch.

Current periodicals are on hand if you like to read and there is a table for bridge. A writing desk is equipped with paper, envelopes and cards. A built-in radio keeps you in touch with your favorite programs.

The Pony Express



C O C K T A I L L O U N G E

AT ONE end of the Club Observation Car is the Cocktail Lounge—a delightful haven.

The buffet is furnished to represent natural mahogany and the comfortable lounge seats are upholstered in a harmonizing mahogany red. In-built ash trays and broad arms which serve as refreshment tables are additional conveniences.

Indirect lighting provides proper illumination for reading and is restful on the eyes.

For a quiet period of relaxation and cheerful companionship visit the Club Observation Car.

B A R B E R S H O P A N D

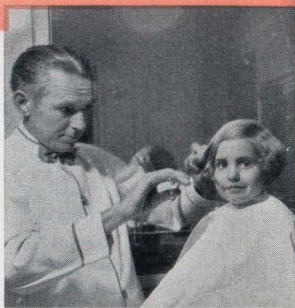
Men

Hair Cut50
Shave25
Beard Trimmed35
Hair Singe25
Facial Massage50
Facial Massage (Bonzilla)	1.00
Plain Shampoo50
Shampoo, Egg, Oil or Tonic75
Hair Tonics25
Bath50

Women

Hair Bob75
Hair Bob—Trim50
Neck Clip25
Plain Shampoo	1.00
Shampoo, Egg, Oil or Tonic	1.25
Hair Tonics25
Bath50

In the Club Observation Car you'll find all the services and conveniences listed on these pages, and at the nominal charges shown. The barber can provide electric razor service, if desired.

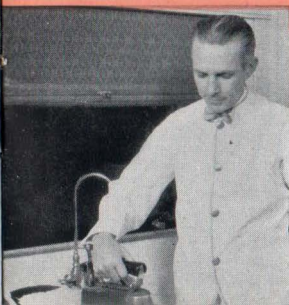


V A L E T S E R V I C E

Trousers (Pressing)	.35
Vest	.25
Coat	.65
Suit	1.00
Overcoat	1.00
Woman's Coat	1.00
Woman's Suit	1.25
Woman's Skirt	.75
Woman's One Piece Dress	1.00

The following Toilet Articles may be purchased at the Barber Shop:

Tooth Brushes	.50
Tooth Pastes and Powders	.30-.50
Shaving Creams and Powders	.35-.40
Talcum Powders	.25
Peroxide of Hydrogen	.25
Listerine	.25
Witch Hazel	.15
New Skin	.15
Styptic Stick	.10
Pocket Combs	.25
Gillette Razor Blades (5)	.25



Valet service from 6.30 in the morning to midnight. The porter of the sleeping car will arrange for this service.

The Pony Express



COMFORTABLE CHAIRS in Pony Express COACHES

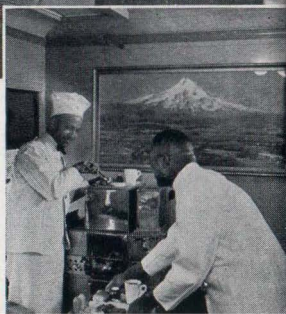
YOU'LL find that the individual chairs in Coaches are roomy and restful. Each chair can be conveniently adjusted to a reclining position. Large, soft pillows are furnished free. At night, the lights are dimmed to aid sound sleep.

Another feature introduced by Union Pacific is the Registered Nurse-Stewardess service . . . a service particularly appreciated by mothers with small children.

All Union Pacific Stewardesses are graduate nurses, carefully selected for their ability, unfailing courtesy and pleasing personality.



The Pony Express



LOW-COST MEAL SERVICE

COACH and Pullman Tourist Sleeping Car passengers on the Pony Express may enjoy delightful meals at 35 cents for dinner and 25 cents for breakfast. These low-cost meals, served on many other Union Pacific trains, have become famous throughout the travel world and are widely imitated.

Only high quality fresh meats and vegetables are used and all food is carefully prepared—tempting and delicious. Each meal is complete and satisfying.

A 35c DINNER

Small Dinner Steak,
Mushrooms
Browned Potatoes
Carrots, Drawn Butter
Hot Dinner Rolls
Vanilla Ice Cream,
Wafers
Coffee Tea Milk

The Pony Express

FOR travelers who would travel in real comfort at surprisingly little cost, a Pullman Tourist Sleeping Car is ideal.

In these spacious, clean, air-conditioned cars, there are regulation-size Pullman berths equipped with soft and comfortable coiled-spring mattresses.

Patrons in these cars may take advantage of the new low-cost meal service for Coach and Pullman Tourist Sleeping Car passengers.

PULLMAN TOURIST SLEEPING CARS



UNION PACIFIC'S FLEET OF FAMOUS TRAINS PROVIDES AMERICA'S FINEST RAIL TRAVEL

THE Pony Express is just one of many Union Pacific trains serving the "best of the West." The Challenger, an All Coach-Pullman Tourist Sleeping Car train, provides low-cost transportation between Chicago and the Pacific Coast. On this popular train, Union Pacific introduced Registered-Nurse Stewardess Service dining-car meals for only 90c a day and other train-travel innovations.

The Streamliners, "City of Denver" "City of Los Angeles" "City of San Francisco" and

"City of Portland", operate between Chicago and the cities for which they were named. Then, too, there is the "City of Salina," first streamlined train built in America, operating between Salina, Kansas and Kansas City, Missouri.

In addition to the Streamliners, Union Pacific service embraces these fine, fast steam-powered trains: the Los Angeles Limited Portland Rose San Francisco Overland Limited Pacific Limited The Columbine and The Mountain Bluebird.

