

Schedules & Stopovers

for visitors to
Yellowstone & Grand Teton Nat'l Parks

FROM THE *East*

WESTBOUND		EASTBOUND	
4:00 PM Lv.	Chicago (C&NW)	Ar. 1:30 PM	
4:00 PM Lv.	St. Louis (Wabash)	Ar. 12:29 PM	
1:45 AM Lv.	Omaha (UP)	Ar. 3:35 AM	
9:30 PM Lv.	Kansas City	Ar. 7:15 AM	
8:25 AM Lv.	Denver	Ar. 6:20 PM	
1:15 AM Lv.	Pocatello	Ar. 1:55 AM	
7:30 AM Ar.	West Yellowstone	Lv. 7:30 PM	
7:00 AM Ar.	Victor	Lv. 8:15 PM	

During the Park season through sleeping cars will operate between Chicago and West Yellowstone; Salt Lake City and West Yellowstone, also Pocatello and West Yellowstone. Northbound the Pocatello-West Yellowstone sleeping car is parked for occupancy at 9:30 PM, and southbound it

FROM THE *West*

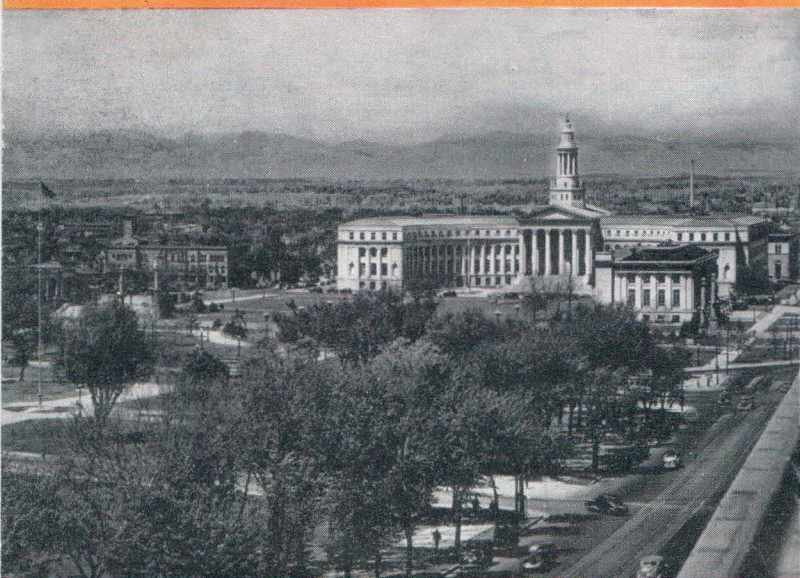
EASTBOUND		WESTBOUND	
7:00 PM Lv.	Los Angeles (UP)	Ar. 6:30 AM	
6:00 PM Lv.	San Francisco (SP)	Ar. 6:35 AM	
4:45 PM Lv.	Seattle (UP)	Ar. 11:59 AM	
9:45 PM Lv.	Portland	Ar. 6:00 AM	
8:00 PM Lv.	Salt Lake City	Ar. 7:00 AM	
9:10 PM Lv.	Ogden	Ar. 5:40 AM	
1:15 AM Lv.	Pocatello	Ar. 1:55 AM	
7:30 AM Ar.	West Yellowstone	Lv. 7:30 PM	
7:00 AM Ar.	Victor	Lv. 8:15 PM	

may be occupied at Pocatello until 8:00 AM. It provides convenient connecting service to or from Yellowstone for travelers en route to or from the Pacific Northwest. Convenient connecting train service, also, to and from Victor, Idaho, gateway to Grand Teton National Park.

Escorted Vacation Tours

Vacationists who enjoy touring with a congenial group, with all details of accommodations and baggage at every stopover point handled completely, should take the opportunity to join any of the Chicago and North Western-Union Pacific Escorted Vacation Tours. Tours costs are low and the one price covers everything. Tours are operated to Yellowstone

as well as to other western National Parks, California, the Pacific Northwest including Sun Valley, Banff and Lake Louise, and to Colorado. For copies of booklet describing these tours in detail, ask any Union Pacific or C&NW representative or write C. H. Mertens, manager, Department of Tours, 148 So. Clark St., Chicago 3, Ill.



Denver's City
and County Building



Historic Mormon
Tabernacle and Temple,
Salt Lake City, Utah

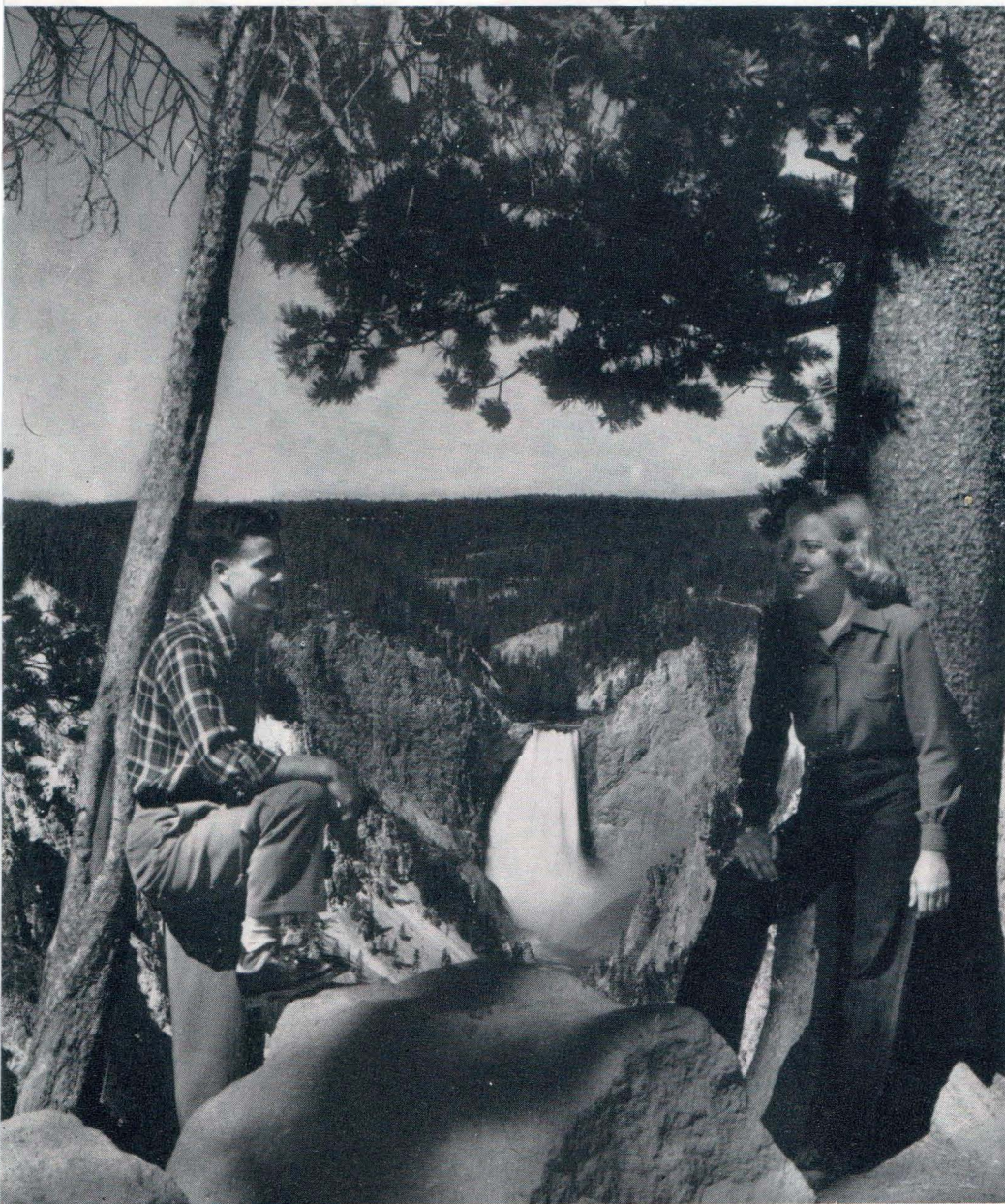
UNION PACIFIC RAILROAD



Yellowstone Opens in June

YELLOWSTONE *Combined with* GRAND TETON

NATIONAL PARK NATIONAL PARK



Lower Falls of the Yellowstone River, higher than Niagara, pour into a canyon of spectacular golden color.

GEYSERS - MUD VOLCANOES

The West Yellowstone entrance to the Park is nearest to most of the geyser basins, where there are literally hundreds of steaming eruptions—noisy, strange, fascinating.

WATERFALLS - CASCADES - CANYONS

Park tours from West Yellowstone, and into the Park from the Teton gateway, visit high falls and dashing cascades, which roar into scenic canyons. The tours cross and recross the great Continental Divide at several different places.

On one continuous tour • by Union Pacific

Visitors may tour either or both of these National Parks when they travel by Union Pacific, the only railroad serving both. A variety of routes and stops are offered. Tour costs depend on the traveler's choice. No extra rail fare on round trip tickets when visiting both Parks via Union Pacific.

IN ONE WAY - - OUT THE OTHER

Your tour patrons have a choice by Union Pacific Railroad of using West Yellowstone, Montana, (gateway to Yellowstone National Park) and Victor, Idaho, (gateway to Grand Teton

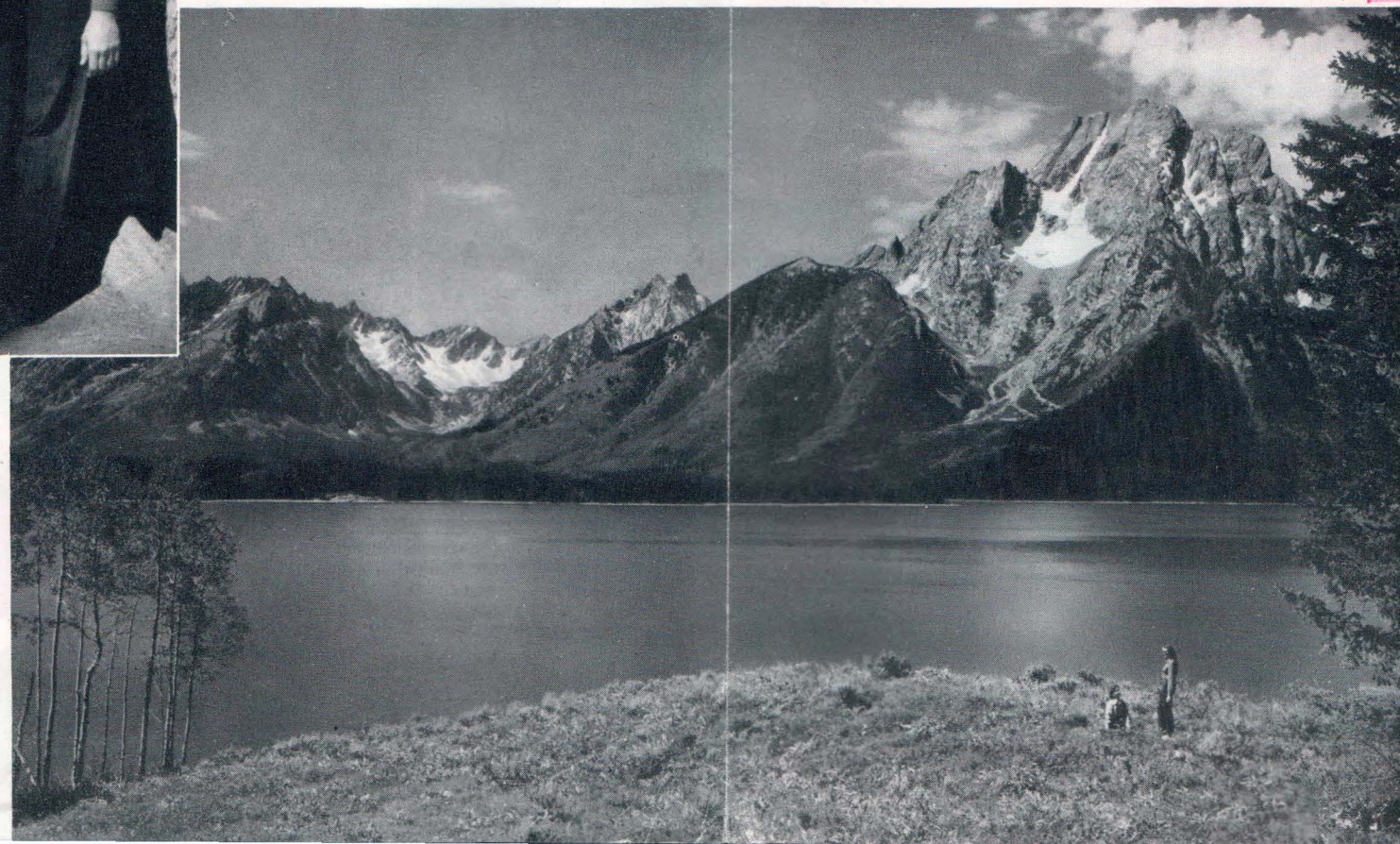
National Park), for a continuous tour of both Parks, in either direction.

Regularly scheduled tour buses connect with trains at both rail stations.

HOTELS-LODGES-DUDE RANCHES

Accommodations for patrons of Yellowstone and Grand Teton tours are arranged in advance, of course. For visitors who wish to stay longer, or make their own schedules, a number of accommodations exist at many points in and near the Parks. They vary from the rustic to the luxurious. Saddle horses, guides, boats, and auto rentals may be arranged.

Rising steeply from Jackson Lake, the Teton Mountains make an unforgettable sight—"mountains that look like mountains should look."



LAKES-FORESTS-WILDLIFE

Nearest to West Yellowstone, and to the Teton gateway, are the Park's forest-rimmed blue lakes. The largest is Yellowstone Lake, which lies 1,020 feet higher in altitude than the highest mountain peak in the East—Mt. Mitchell, N.C. Bears are seen frequently along the road, and deer, buffalo, and moose are also plentiful.