



*Free pillows in Pacific Limited chair cars*

## PACIFIC LIMITED

(Completely Air Conditioned)

*Westbound*  
(Read Down)

11:35 a.m. Lv. CHICAGO	(Cent. Time)	Ar. 8:45 p.m.
11:15 p.m. Lv. Omaha	(Cent. Time)	Ar. 8:30 a.m.
11:40 a.m. Lv. Cheyenne	(Mt. Time)	Lv. 8:30 p.m.
11:25 p.m. Ar. Ogden	(Mt. Time)	Lv. 8:40 a.m.
12:40 p.m. Ar. Reno	(Pac. Time)	Lv. 5:13 p.m.
6:15 p.m. Ar. Sacramento	(Pac. Time)	Lv. 11:30 a.m.
8:31 p.m. Ar. Berkeley	(Pac. Time)	Lv. 9:22 a.m.
8:45 p.m. Ar. Oakland	(Pac. Time)	Lv. 9:12 a.m.
9:30 p.m. Ar. San Francisco	(Pac. Time)	Lv. 8:35 a.m.

*Eastbound*  
(Read Up)

The *Pacific Limited* carries through standard and tourist Pullmans and chair cars, Chicago to San Francisco via Omaha and Cheyenne; through standard and tourist Pullmans from St. Louis and Kansas City to San Francisco, and chair car from Kansas City to San Francisco. These cars operate via Denver and Cheyenne. Also through standard and tourist Pullmans are carried from Salt Lake City to San Francisco.

### Other Overland Route Trains

*Pacific Limited* is one of six great Overland Route trains. There's our daily economy train, the *San Francisco Challenger* for chair car and tourist passengers exclusively (breakfast 25¢, luncheon 30¢, dinner 35¢, stewardess-nurse); the luxurious all-Pullman *San Francisco Overland Limited* (daily, no extra fare), and three streamlined, extra fare speedsters: the *City of San Francisco*, the *Forty Niner* and (during the summer season) the *Treasure Island Special* providing super-speed streamlined service every other day.

R. THOMSON

Passenger Traffic Mgr. C. & N. W., Chicago, Ill.

W. S. BASINGER

General Passenger Traffic Mgr. Union Pacific, Omaha, Neb.

F. S. MCGINNIS

Vice-President, System Passenger Traffic Southern Pacific  
San Francisco, Calif.

SEE THE ROCKIES



AND HIGH SIERRA

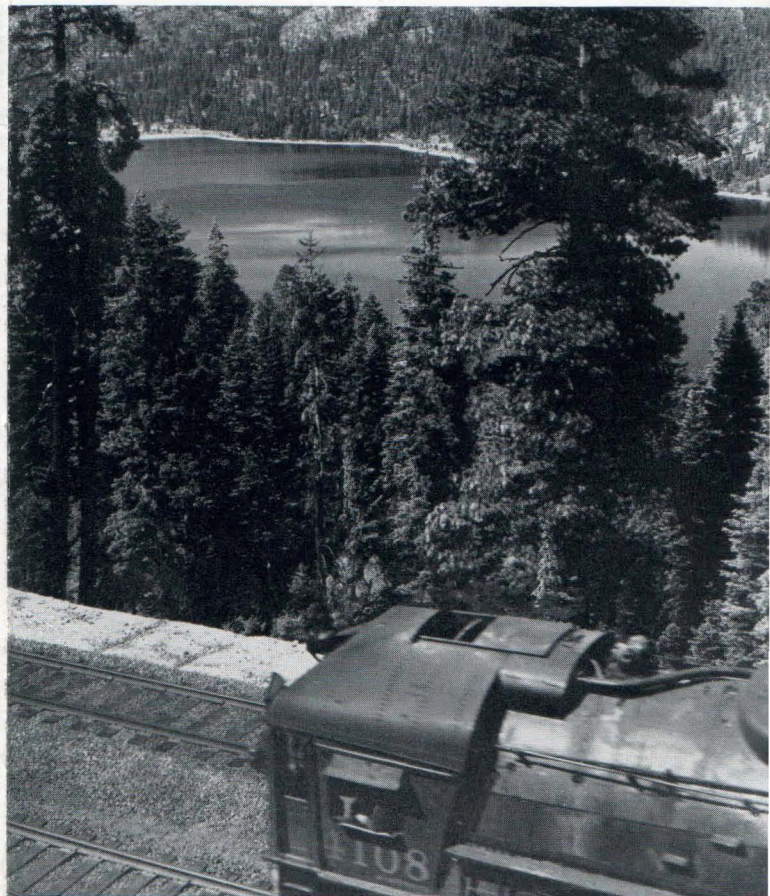


BY DAYLIGHT



# Pacific Limited

CHICAGO — SAN FRANCISCO



NORTH WESTERN • UNION PACIFIC  
SOUTHERN PACIFIC



# Pacific Limited

## Bay Bridge, San Francisco

RENO

## TRUCKEE

## SACRAMENTO

## SAUSALITO

## OAKLAND

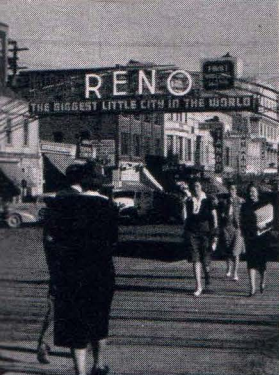
# SAN FRANCISCO

**VIRGINIA CITY**

LAKE  
TAHOE

**TO LOS ANGELES**





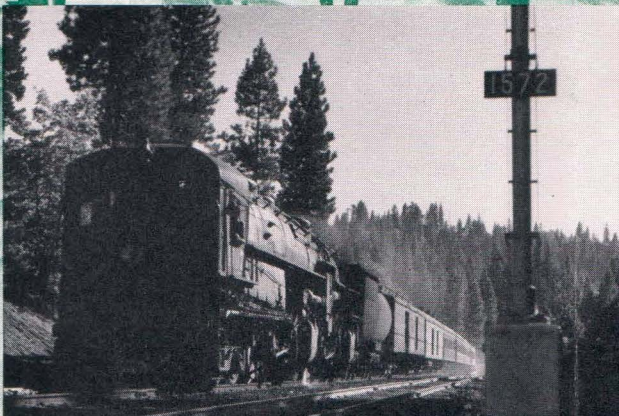
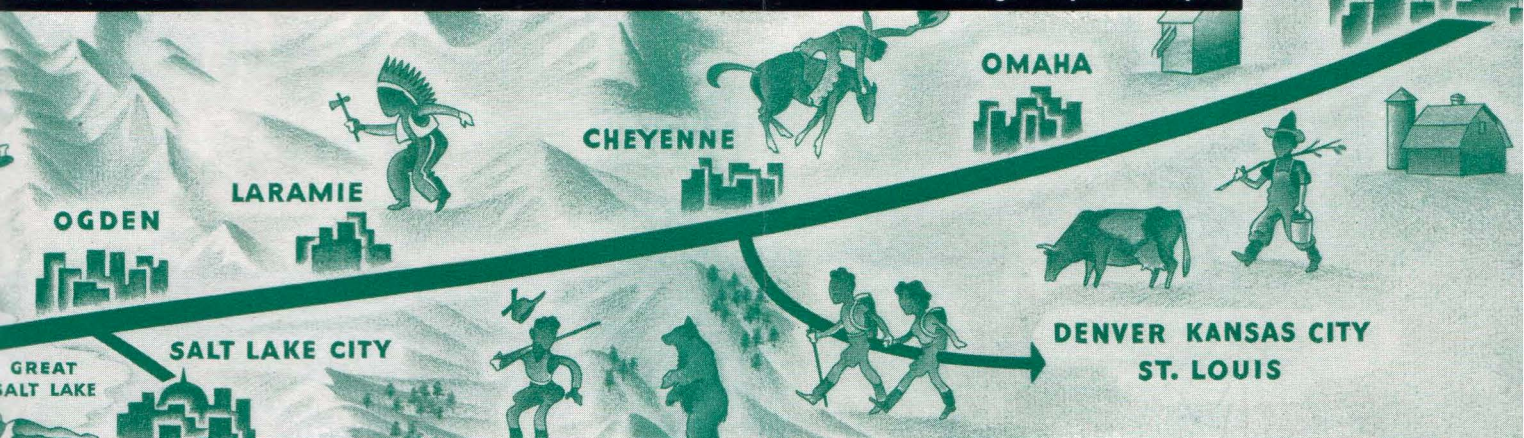
Reno is on our main line



Devil's Slide, Utah



Chicago's impressive skyline



Through Virgin Forests



Above the American River Canyon

Western Slope, High Sierra

Near the High Sierra summit







# Pacific Limited

## The scenic train between Chicago and San Francisco Over the Rockies and High Sierra by daylight!

SOME fine morning soon we hope you will be one of a merry, excited throng aboard our popular *Pacific Limited* when it pulls out of the great Chicago and North Western Station.

That certain morning a courteous porter will show you to your seat in a standard Pullman, a modern tourist sleeping car (with full-size berths, of course), or a comfortable chair car. For, you see, the scenic *Pacific Limited* carries all types of accommodations—all air-conditioned!

### For Your Comfort

If you're a standard Pullman passenger, you'll enjoy the big, full-length lounge car with its many easy chairs and sofas, radio, bar and the latest magazines to read. If you're riding in a chair car, you'll appreciate the free pillows and the Tray Service for inexpensive snacks (sandwiches 15¢,

coffee 10¢, etc.). The *Pacific Limited* dining car, open to all passengers, serves delicious meals with real western hospitality, and the prices are *low*.

### See the Sights by Daylight

But the principal reason people take the *Pacific Limited* is to see the best of the scenery *by daylight* . . . the Rocky Mountains and Utah's strange Devil's Slide . . . then, just after noon, the second day from Chicago, you'll arrive at Reno, the gay and famous little city that never sleeps. Here you may want to stop over a day or two, then continue your *Pacific Limited* daylight journey over the crest of California's High Sierra, past beautiful Donner Lake, above the magnificent gorge of the American River Canyon, then down through the romantic Gold Country to San Francisco.

*Pacific Limited diner serves inexpensive meals*



*Full-length Pacific Limited lounge car*

