

distinctive in design

New **UNION PACIFIC**

*Domeliners*

BETWEEN CHICAGO and LOS ANGELES • PORTLAND • TACOMA • SEATTLE



**Y**OU step into a realm of radiant beauty when you enter an Astra Dome car on a Union Pacific Domeliner. And you'll soon discover that the richness of the interior, the luxurious upholstery and carpeting, the intriguing decorative effects all go to form a perfect setting for the many innovations provided for your travel comfort and enjoyment.

*To mention just one such innovation,  
all Astra Dome cars are equipped with  
double capacity air conditioning.*

THE

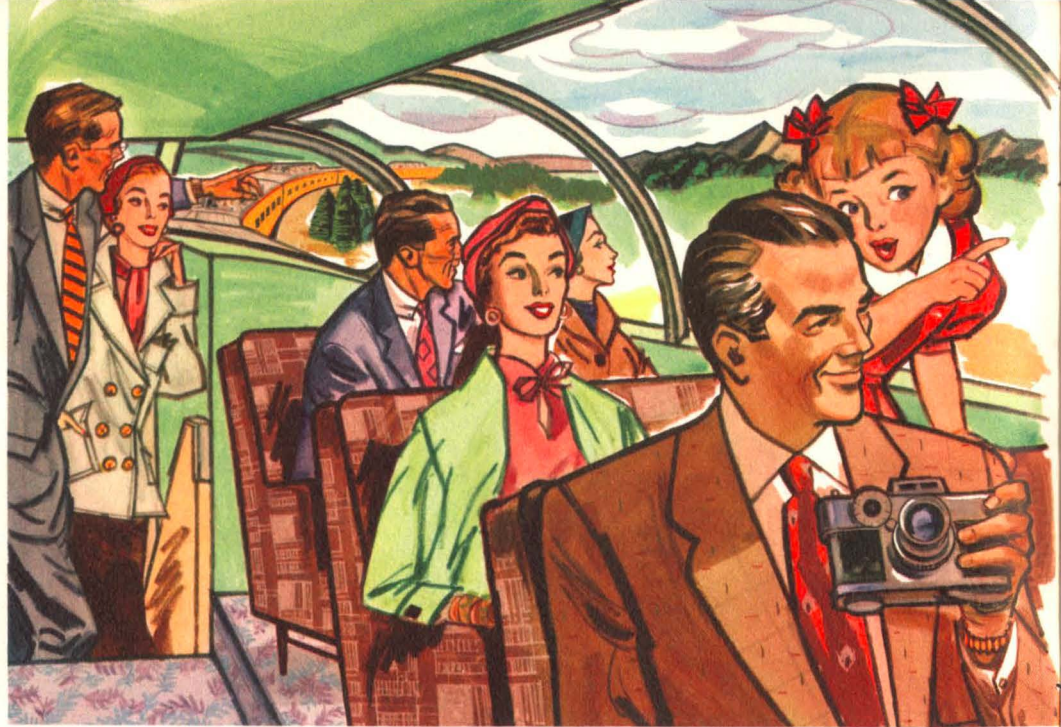
# *Domeliners*

"CITY OF PORTLAND" between Chicago-Portland  
Astra Dome Coaches . . . Diners and Lounge Cars

"CITY OF LOS ANGELES" between Chicago-Los Angeles  
Astra Dome Diners and Lounge Cars

"THE CHALLENGER" between Chicago-Los Angeles  
Astra Dome Coaches and Lounge Cars

All three Domeliners provide not only reserved  
Coach seats but a variety of modern Pullman  
accommodations.



## *Astra-Dome Coaches*

Illustrated on the opposite page is the "upstairs" section of an Astra Dome Coach. As a new departure in design, modern divan-type seats are placed at an angle . . . the aisle seats slightly forward of the window seats . . . so that all occupants may have an unobstructed view.

\* \* \*

In the "downstairs" Coach section "Sleepy Hollow" seats are equipped with full length leg rests and convenient head rests easily adjusted. All seats are reserved in the lower level.



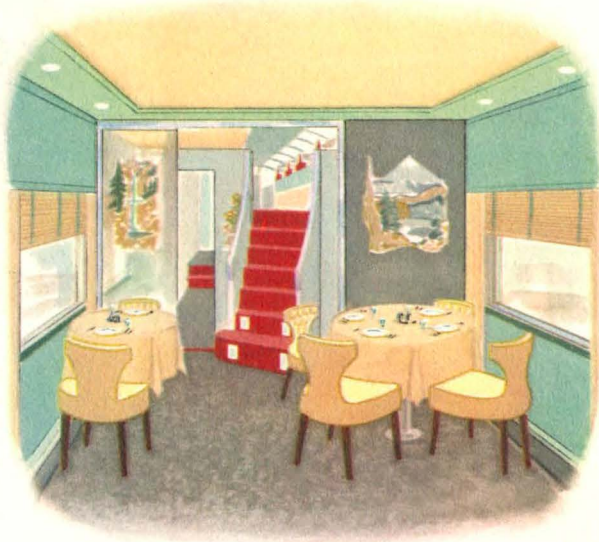
A view of the lower level in the Astra Dome Coach.



# Astra-Dome Dining Cars

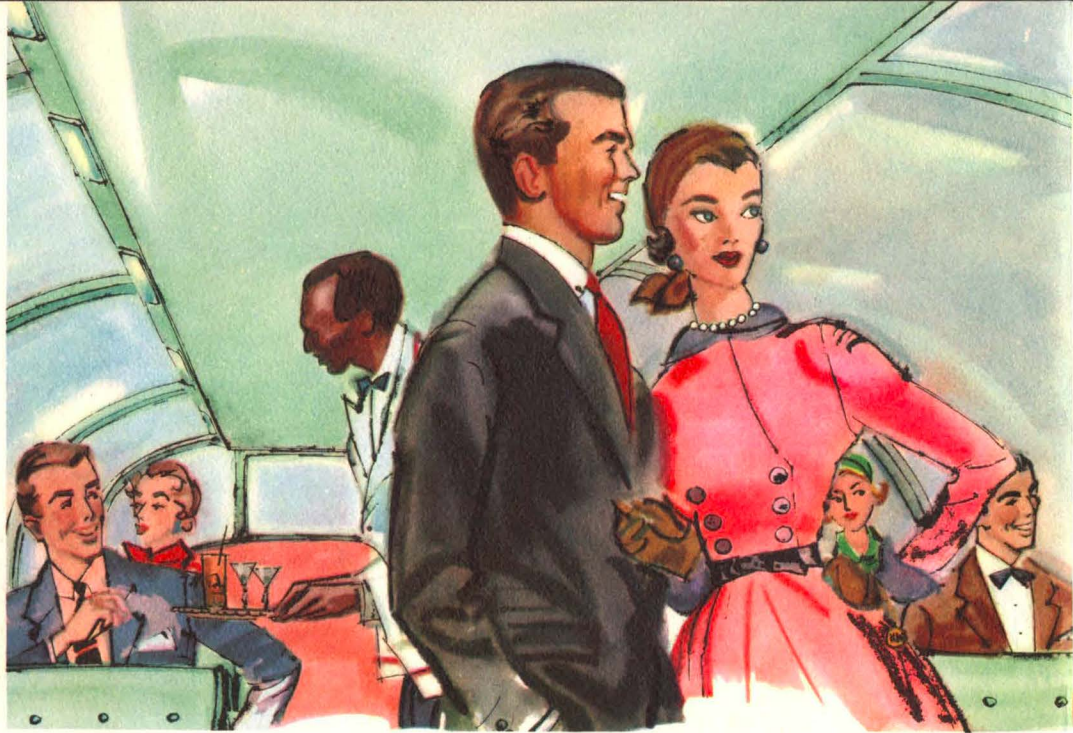
Dining on a train while viewing the passing panorama is always a pleasant experience. Imagine, then, how much more enjoyable the occasion in the atmosphere of this glamorous Astra Dome Diner; particularly so in the evening hours when the sun sinks beyond the horizon and stars twinkle above you.

*Union Pacific dining-car menus offer you only the finest of freshly prepared foods, graciously served by attentive waiters.*



In a secluded corner of the "downstairs" section, there is a smart, exclusive dining room for private parties.

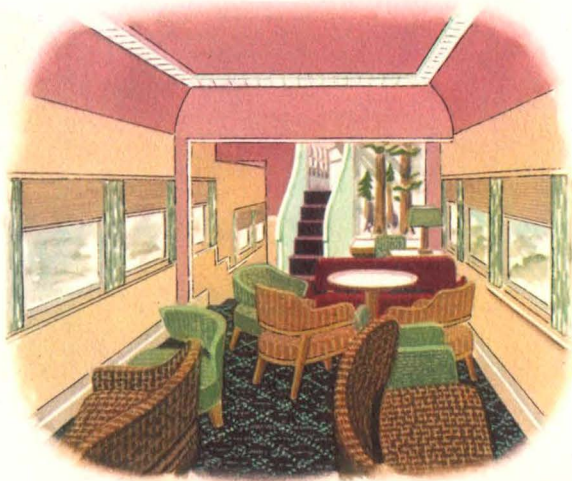




## *Astra-Dome Observation Lounge Cars*

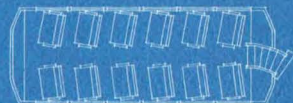
The wide, open view provided by this most modern of dome-type observation cars gives you a vast ever-changing panorama. What a wonderful way for the younger generation to become acquainted with the scenic beauty of western America. And what a wonderful way to enjoy peaceful relaxation.

*In all Astra Dome cars, the wall decorations are representative of the western country which the Domeliner traverses.*

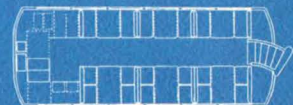
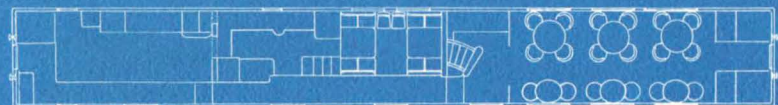


The "lower deck" features a card room seating six and a centrally located cocktail lounge.

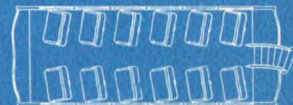
# *Diagrams of New Union Pacific Astra-Dome Cars*



A S T R A - D O M E C O A C H



A S T R A - D O M E D I N E R



A S T R A - D O M E O B S E R V A T I O N L O U N G E

UNION PACIFIC

*Domeliners*

AND

*Streamliners*

SERVE THESE  
REGIONS

CALIFORNIA . . . This "Land of Many Lands" is served by two Domeliners: "The Challenger" and "City of Los Angeles" and the Streamliner "City of San Francisco."

PACIFIC NORTHWEST and SUN VALLEY . . . Both regions are served by the Domeliner "City of Portland." Sun Valley guests detrain at Shoshone, Idaho, to be met by modern motor buses.

COLORADO . . . The smart Streamliner "City of Denver" speeds overnight, every night, between Chicago and Denver.

YELLOWSTONE and GRAND TETON National Parks . . . These adjoining vacation regions may be conveniently reached via Union Pacific.

SOUTHERN UTAH-ARIZONA National Parks . . . Zion, Bryce and Grand Canyon form one of America's most spectacular and colorful scenic areas.

STOPOVERS . . . The Southern Utah-Arizona Parks, Las Vegas-Hoover Dam in Nevada, and beautiful Salt Lake City, Utah, may be visited as stopovers on the way to or from Los Angeles, via Union Pacific, at no additional rail fare.

\* \* \*

FAMILY FARE PLAN . . . On this plan a family group, two or more persons, may travel at a big reduction in rail fare. The plan applies on *all* Union Pacific trains. Ask any Union Pacific representative for complete details.





*Road of the daily Domeliners and Streamliners*