

A PORTFOLIO
OF *Kodachromes*



REPRODUCED ON LEE PAPER COMPANY'S *Corinthian Cover* FOR THE UNION PACIFIC RAILROAD

This *P*ortfolio has been assembled to demonstrate the brilliance and character of Corinthian as a background for true color reproduction. These Kodachrome reproductions are exactly as they have been produced on basis 20x26—80 Corinthian Cover for menus for the Union Pacific Railroad. We think they speak for themselves.

LEE PAPER COMPANY
Vicksburg, Michigan



Few people indeed have not heard or read about San Francisco's famous Chinatown, and nearly everyone plans some day to visit it. There within a few compact city blocks upwards of 21,000 persons—many of them native-born, some foreign-born—live and carry on their business activities. Chinatown has no squalid features, but is modern and progressive, and gives the visitor a view of the best the Orient has to offer. Many of the older generation still wear the oriental garb.

This area adjoins the best business section of San Francisco and is easy of access, friendly to all who come. Its buildings have an oriental touch and its shops and fine stores are filled with treasures from China.



East Meets West—Modern skyscrapers of the Occident look down on a corner of transplanted Orient in San Francisco's Chinatown.



San Francisco Overland



The San Francisco skyline, framed by the mighty towers of the San Francisco-Oakland Bay Bridge, is an impressive sight. This great bridge that links the East Bay with "The City" is a miracle in steel, and its giant cables hang with grace and ease from the lofty towers that stand firmly on the rock below the waters of San Francisco Bay.

The building of such a bridge long intrigued the minds of construction engineers. And when the opportunity came they wrought well. Begun in 1933, it was opened to traffic in 1936. Total cost was nearly 80 million dollars. It is planned to liquidate this cost through tolls, without taxation, until the bridge is toll free. The structure, with approaches, is about eight and one-quarter miles long, suspension type to Yerba Buena Island and cantilever type from there to the shore at Oakland.



San Francisco-Oakland Bay Bridge—Longest and most costly ever built. A triumph of architectural design and construction.

San Francisco Overland



On the north shore of San Francisco is the harbor of the Italian fishing fleet, popularly known as Fishermen's Wharf, and visited annually by many thousands of tourists because of its picturesque background and romantic traditions. Here the tall-masted trawlers of the sardine fleet jostle the tiny boats of the crab fishermen, brightly painted, often in blue—the "Virgin's color".

A trip around the city is hardly complete without seeing this busy and intriguing mart with its rainbow colors. Even if the fleet is out there is plenty of activity to fascinate the visitor—net mending by some of the fishermen left behind; painting and repairing of boats by others; freshly caught crabs boiling in big iron cauldrons at the curb to be tended.

Here, also, are many fine night clubs and restaurants specializing in deliciously fresh sea foods.



Fishermen's Wharf—Always of interest to visitors in San Francisco; as colorful as its counterpart in the Bay of Naples.



San Francisco Overland



For many decades the people of San Francisco dreamed of a bridge across the narrow channel of the Golden Gate, through which the tide waters of the Pacific Ocean move into San Francisco Bay. Ground was broken in 1933 for the gigantic structure, which was completed in about four years. Built at a cost of \$35,000,000, it is the loftiest and longest single-span cable suspension type bridge in the world, and the first ever built across the mouth of a major harbor.

It was originally intended to be painted black, but when it got its coat of red lead to protect it from rust, beauty-loving San Franciscans were so taken with the spectacular color flaming against the blue sky and dark water that it was decided to leave it that way.

Its graceful architecture is a thing of beauty; it has wide driveways to carry the endless traffic that is offered between the Peninsula and the North Bay shore; and it stands as a fitting monument to the progressive spirit of San Francisco and the Bay Area.



Golden Gate Bridge—World's largest single-span suspension type; connects San Francisco with the North Bay shore, a mile away.

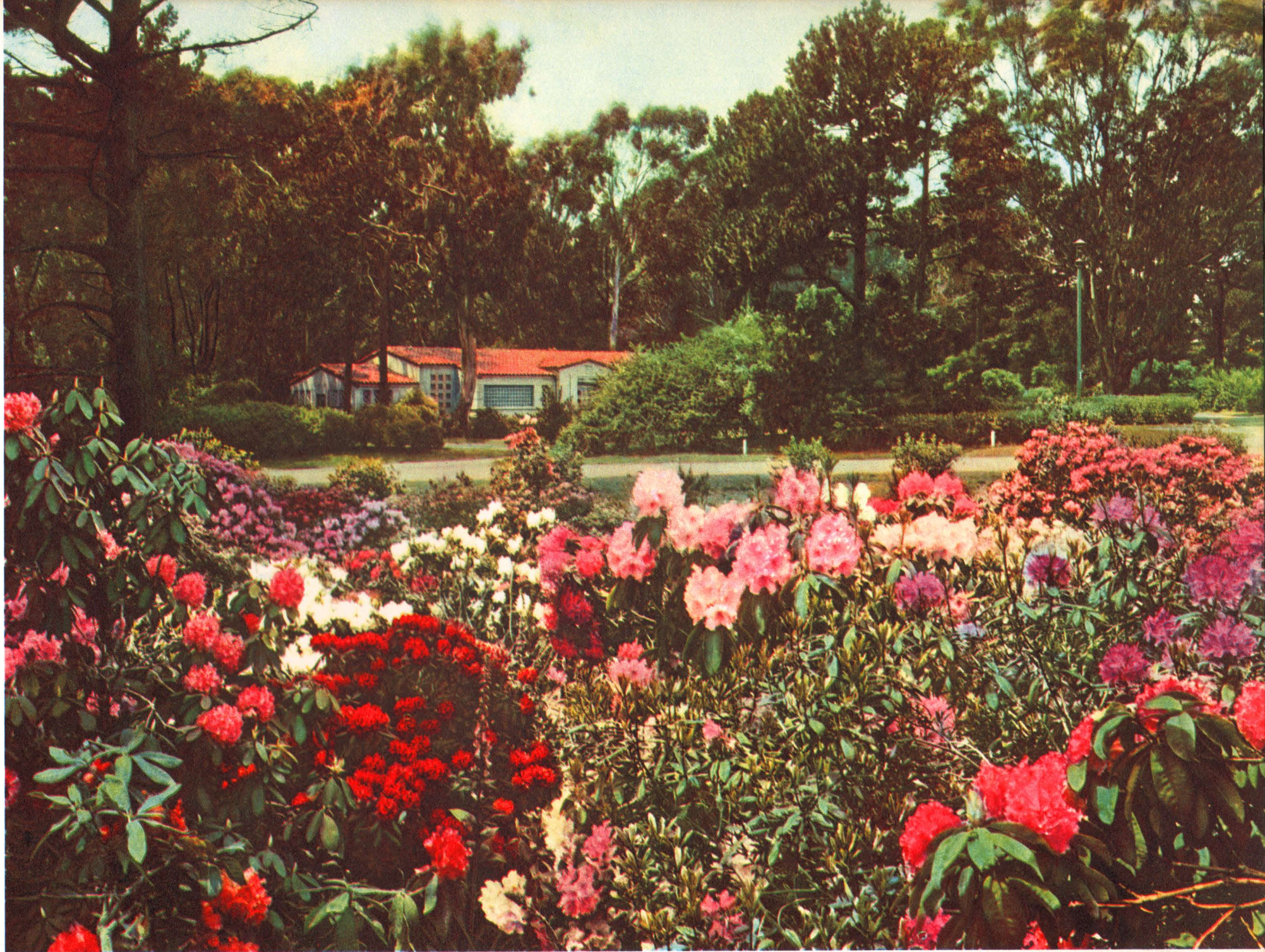


San Francisco Overland



One would need to travel far to find a public playground so unusual in beauty and interest as famous Golden Gate Park in San Francisco. It is by far the largest in the city and was laid out and developed entirely by the untiring efforts of many, on the one-time barren sands of the peninsula. This unique park is about four miles long and one-half mile wide; is rich in plant and tree life and horticultural developments, as indicated by the flaming bed of rhododendrons in the accompanying illustration.

There are many miles of driveways and bridlepaths, an aquarium, the Natural History museum and the Simson African Hall, an art museum, open-air pavilion, arboretum, many lovely lakes, an athletic field with stadium, tennis courts, bowling greens, and facilities for every imaginable sport from cricket to miniature yachting. You can drive, ride or bicycle through the park, but the best way to see it, if time permits, is on a leisurely walking tour.



Golden Gate Park—In the spring months rhododendrons lend a colorful touch to San Francisco's huge man-made playground.

San Francisco Overland



Within the city of Oakland, California, is lovely Lake Merritt, a Y-shaped body of water nearly a mile in length, and connected by a narrow channel with the salt water of San Francisco Bay. It is unique in being the only large tidal lake in the heart of any American city.

Surrounding it is a beautiful park, with handsome public buildings. Broad boulevards follow its shore line. Canoes, row-boats and power launches of many kinds ply its surface. A portion of the lake has been fenced off as a wildfowl sanctuary. This lake and its environs has become a very popular playground for the people of Oakland and visitors.



Boating on Lake Merritt—This mile-long salt water tidal lake extends into the heart of Oakland, California.

San Francisco Overland



Within the State of Colorado is a greater profusion of mountain scenery than can be found in any other comparable area in America. Furthermore it contains most of the 14,000-foot peaks of this country. Among names of wide fame are Pikes Peak, Longs Peak, Holy Cross Mountain and Mount Evans. Atop Lookout Mountain, near Denver, is the grave of W. F. Cody (Buffalo Bill), visited annually by many thousands of tourists.

The most noble grouping of these mountain masses is to be found in a compact area of about 400 square miles, some 70 miles northwest of Denver. This region, set aside as a national playground, is known as Rocky Mountain National Park. The famous Estes Park and Estes Park village are adjacent to its eastern entrance. Bear Lake, Dream Lake, Fern Lake and other mountain-rimmed bodies of water of similar beauty are found in its inner recesses.



Bear Lake and Hallett Peak—One of the great scenic gems in Rocky Mountain National Park, Colorado.



Located in Northern Arizona, the Grand Canyon is actually a vast network of yawning chasms, following the course of the surging Colorado River for 217 miles. Countless artists have painted its enthralling magnificence, and volumes have been written about it, but the Grand Canyon of Arizona must be *seen* with your own eyes to be fully appreciated.

A good vantage point is from beautiful Grand Canyon Lodge on the brink of the North Rim, 1,000 feet higher than the opposite rim, 12 miles distant. To gaze through the broad windows of the Lodge at the great sea of shifting, changing rainbow colors of the unfathomable gorge is an exalting experience.

Grand Canyon is linked by paved highways with near-by Zion and Bryce Canyon National Parks in Southern Utah. This group of three scenic wonders attracts thousands of vacationists annually.

Many travelers enroute to or from California, via Union Pacific, arrange for stop-over privileges at these world-famed National Parks.



Grand Canyon from North Rim — immense, awesome, yet intimate and friendly with those who learn to know and love it.



Old Faithful, the famous geyser, is one of hundreds of natural wonders in Yellowstone National Park. Every 60 to 80 minutes an immense column of hissing, boiling water soars gracefully into the sky. For four minutes it continues to play, reaching a height of 120 feet or more. A life-long memory of a Yellowstone trip is to see Old Faithful at night, its brilliant plume caught in the white glare of a giant searchlight on the roof of near-by Old Faithful Inn.

Bubbling paint pots, a petrified forest, Firehole Lake, the Yellowstone bears and other wild life are a few of the attractions that will intrigue you. Camping sites are excellent; cabins, lodges and hotels are de luxe, cozy and clean.

Thousands of Union Pacific travelers visit Yellowstone and near-by Grand Teton National Park annually as complete vacations, but they can also be seen as a short side-trip on your way to or from the Pacific Northwest.



Old Faithful Geyser — This famed "actor" in Yellowstone Park never fails to delight his "house" with a first class show.



The Great White Throne towers a half mile above the valley floor in Zion National Park in Southern Utah. It is one of the most inspiring and majestic mountain rock formations on the face of the earth. Its sheer slopes seem forever changing with magic light. Also adding to Zion's beauty is the colorful Temple of Sinawava, another of the many masterpieces created by nature in this western wonderland.

Only a few years ago the wonders of Southern Utah were part of a little-known virgin mountain wilderness. Today, however, trails have made it accessible, and the region is enthusiastically proclaimed by thousands of visitors. In the heart of Zion Canyon is attractive Zion Lodge with modern facilities for guests.

Zion National Park is linked by paved highways with Utah's Bryce Canyon National Park and the Grand Canyon National Park of Arizona. They present a succession of scenic wonders that go to make one huge spectacular panorama.

Many travelers enroute to or from California, via Union Pacific, arrange for stop-over privileges at these world-famed National Parks.



The Great White Throne — majestic mountain in the east wall of Zion, rises nearly 2500 feet above the valley floor.



Quick acceptance of Sun Valley by skiers and other winter sports devotees was the logical outgrowth of a well-organized plan. It began in 1936 with a careful choice of the region to be developed. Sun Valley has a unique location in relation to the Sawtooth Mountains, a fine terrain with long, timber-free ski runs, and a record of plenty of dry, powder snow lasting into the spring months. It was quickly found to be ideal for the purpose desired. Sun Valley Lodge, Challenger Inn and other accommodations were built and Sun Valley has been successful from its first season on. After four years during the war as a naval recreation and rehabilitation facility it was reopened to the public in December 1946.

For a well-rounded winter vacation, with outdoor sports and indoor games and festivities, Sun Valley is unequalled.



Protected by the lofty Sawtooth Mountains, Sun Valley offers the finest spot in America for skiing and other winter sports.



*M*ost exquisitely colorful of our National Parks is Bryce Canyon, etched by erosion into the color-banded limestone cliffs of the Paunsaugunt Plateau in Southwest Utah. This region is truly one of nature's art galleries, filled with delicately-carved statues and fantastic figurines. Wind, rain, frost, melting snows, alternating heat and cold, and other agents of erosion are the artists, and their skillful work never ceases.

Nature has dipped lavishly into her many-colored palette for tints of red and burnt orange, rose petal pinks and off-whites, making Bryce the most sparkling gem among our National Parks. Bryce, in its cameo-like delicacy, is an artist's dream come true.

Bryce Canyon National Park is reached by motor bus from Cedar City, Utah, on the Union Pacific Railroad, and there are ample accommodations for visitors.



This glimpse of Bryce Canyon National Park reveals but one phase of the region's scenic glories.



The tang of the Wild West still lives in Grand Teton National Park in Wyoming in a setting of unsurpassed mountain scenery. There's a genuine thrill in visiting the Jackson Hole country, renowned as an outlaw hideout of frontier days. In this region are many Dude Ranches offering splendid accommodations and a western hospitality that is personal and spontaneous.

Horseback riding, fishing, climbing and hiking are stimulating in the refreshing climate. Lodges and sleeping cabins are modern. Excursions and pack-trips can be made into the surrounding country. Saddle horses, motor boats, row boats and automobiles are available.

In the Union Pacific West there are many such ranches that take paying guests and provide them with all the facilities for a vacation in the real Western outdoors. They are found in the Grand Teton and Snowy Range regions of Wyoming, and in equally beautiful and romantic areas of Colorado, Idaho, Montana, California, Nevada, Oregon and Washington.



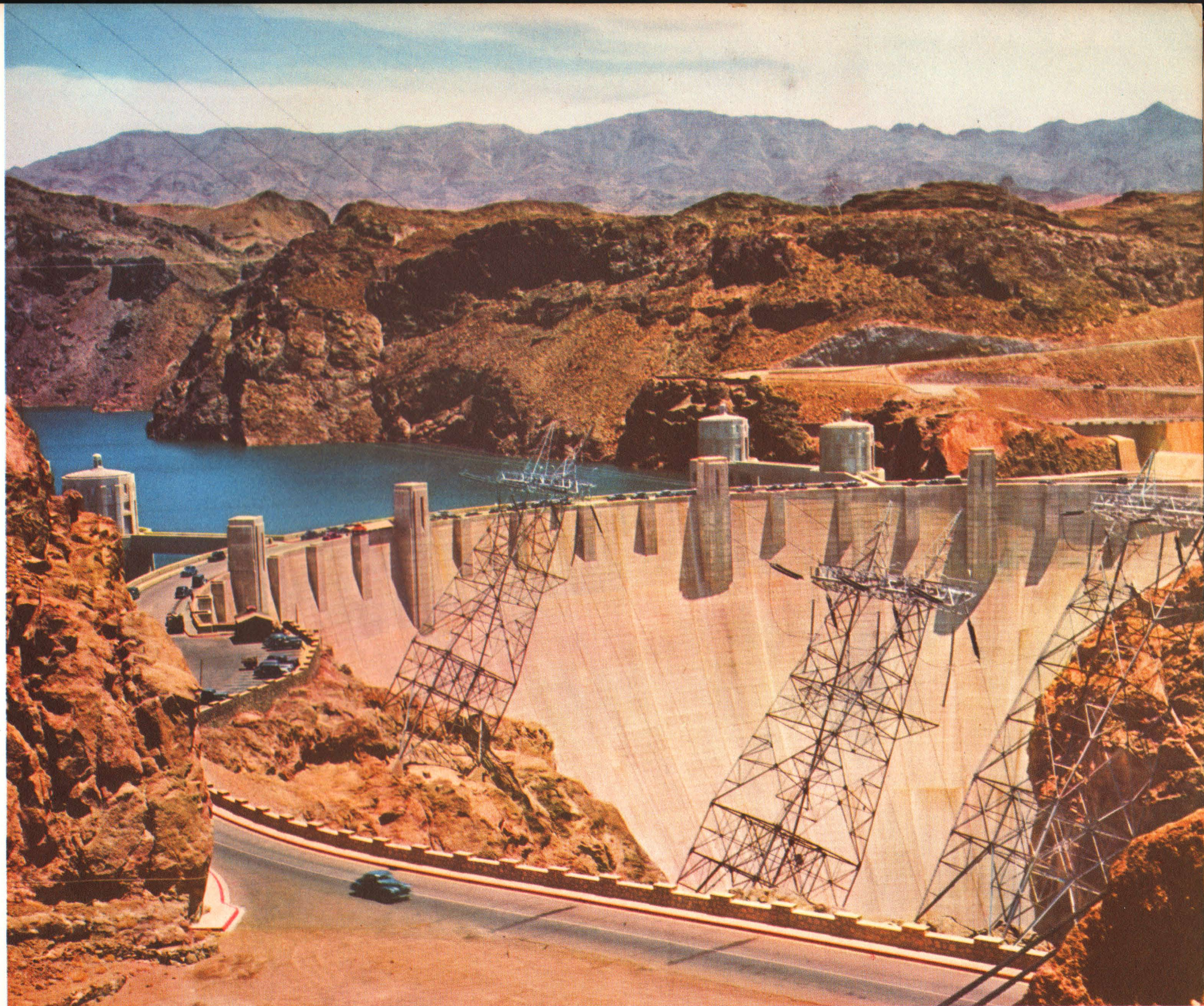
Dude Ranch Country—From the ranches in Jackson Hole, Wyoming, are many fine views of the Teton Mountains.



Roaring through canyons and deserts, the rushing waters of the Colorado River are harnessed by Hoover Dam, a masterpiece of masonry, just a short distance from Las Vegas, Nevada. The result is a vast reservoir, Lake Mead, which covers 227 square miles . . . largest artificial lake in the world.

The thousands of visitors who marvel at this engineering triumph find additional interest and enjoyment in the scenic beauty of the Lake Mead region and in the variety of its recreational opportunities. Imagine surf-boarding in the heart of the desert! Other pleasant diversions are sail-boating and bathing. Here, too, is some really fine fishing.

When traveling to or from California via Union Pacific, you can arrange in advance for a stop-over at romantic Las Vegas and visit near-by Hoover Dam and Lake Mead. Modern, convenient accommodations are available.



Hoover Dam, near Las Vegas, Nev., world's highest creater



The pioneers of a century ago who drove their covered wagons over the old Oregon trail followed the Columbia River into the Pacific Northwest where they began the building of a great agricultural and industrial empire.

As you sit in luxurious comfort in a Union Pacific train today, you traverse that same majestic Columbia River Gorge through nearly 200 miles of breathless scenery on the way to or from Portland. As the green empire unfolds before your eyes, your train follows the course of the mighty river which has carved its way through the Cascade Range.

Mile after mile, past leaping cataracts, rugged cliffs, garden-like islands and primeval forests, the majestic river panorama beckons.

A trip to the Pacific Northwest is incomplete without a drive over the famed Columbia River Highway. The magnificent road passes 11 waterfalls in 11 miles. A bright carpet of wild flowers lends enchantment to the vari-colored rocks along the way.



Columbia River, Oregon—Among the great rivers of the world, the Columbia ranks high, historically, commercially, scenically.



California means many things to many people and offers almost every kind of scenic delight and vacation attraction. There are snowy mountains, fascinating deserts and warm sea beaches. Its four National Parks are Lassen Volcanic, Sequoia, Kings Canyon and world-renowned Yosemite.

Fascinating indeed is the orange empire country of Southern California. Below a range of snowy peaks that give protection from the north, the fertile valleys lie in a sub-tropical climate. In one sweeping glance the eye views long rows of palm, eucalyptus and other warm climate trees; between and among them endless orchards of oranges, lemons and other citrus fruits; and beyond, the majestic, protective mountains.

The great cities of California are among the most interesting and romantic in the world, San Diego with its year around equable climate, Los Angeles with its nearby movie colonies, and San Francisco at the Golden Gate, redolent of pioneer and gold-rush days.



Orange Groves and Snowy Peaks—A delightful vista in Southern California's citrus fruit area.



For the summer vacationist, Sun Valley offers numerous attractions. Golf, tennis, swimming, horseback riding, ice skating on an artificial out-door rink, skeet and trap shooting are all diverting pastimes.

Pack-trips into the rugged Sawtooth region also can be arranged. In this virgin territory there are many mountain streams and lakes where gamey trout abound. Here, too, for the hunter are varied types of both four-footed and feathered game. Sun Valley—"like a seaside ranch in the mountains"—is an ideal vacation retreat for all members of the family. Gentle riding ponies and a modernly equipped and supervised playground delight the children.

Challenger Inn and Sun Valley Lodge provide a variety of comfortable, attractive guest rooms at a wide range in price. Union Pacific trains take you to Shoshone, Idaho, where you are transported by bus to picturesque Sun Valley Village.



Sun Valley, Idaho—famed for skiing, is supreme also as a summer sports center. Every known outdoor recreation is available.



The Mormon Temple and Tabernacle, and other religious edifices in "Temple Square," are usually of chief interest to the visitor in Salt Lake City, Utah. The Mormons (Church of Jesus Christ of Latter Day Saints) have built temples from the beginning of their history. There are a number of them, beautiful and interesting structures, in western states, particularly Utah and Idaho. The one in Salt Lake City is a realization of the dreams and religious aspirations of Brigham Young who led the Mormon pioneers to Salt Lake Valley in 1847. It is built of native gray granite, and in classical design, of Romanesque and Gothic architecture. Interior decorations and furnishings are said to have an exalting beauty that is entirely in harmony with the design and purpose of the Temple. The maximum length of the building is 186½ feet, its width 118½ feet. The east center tower rises 210 feet. The statue of the Angel Moroni atop it is 12 feet 5½ inches in height.



This world famous Temple in Salt Lake City, Utah is the chief sanctuary of the Mormon Church.

Corinthian is stocked in White Antique Finish in 4 Cover weights and 2 Text weights in Plain or Deckle Edge. A sample of each weight is shown in the following pages of this portfolio.

Corinthian can be tailor made in reasonable manufacturing quantities for specific jobs. Special sizes, special surfaces, embossed finishes, and special pasted bristols can be supplied.

The Lee agent in your area will be glad to give you complete information and furnish samples on special making inquiries.

LEE PAPER COMPANY
Vicksburg, Michigan

