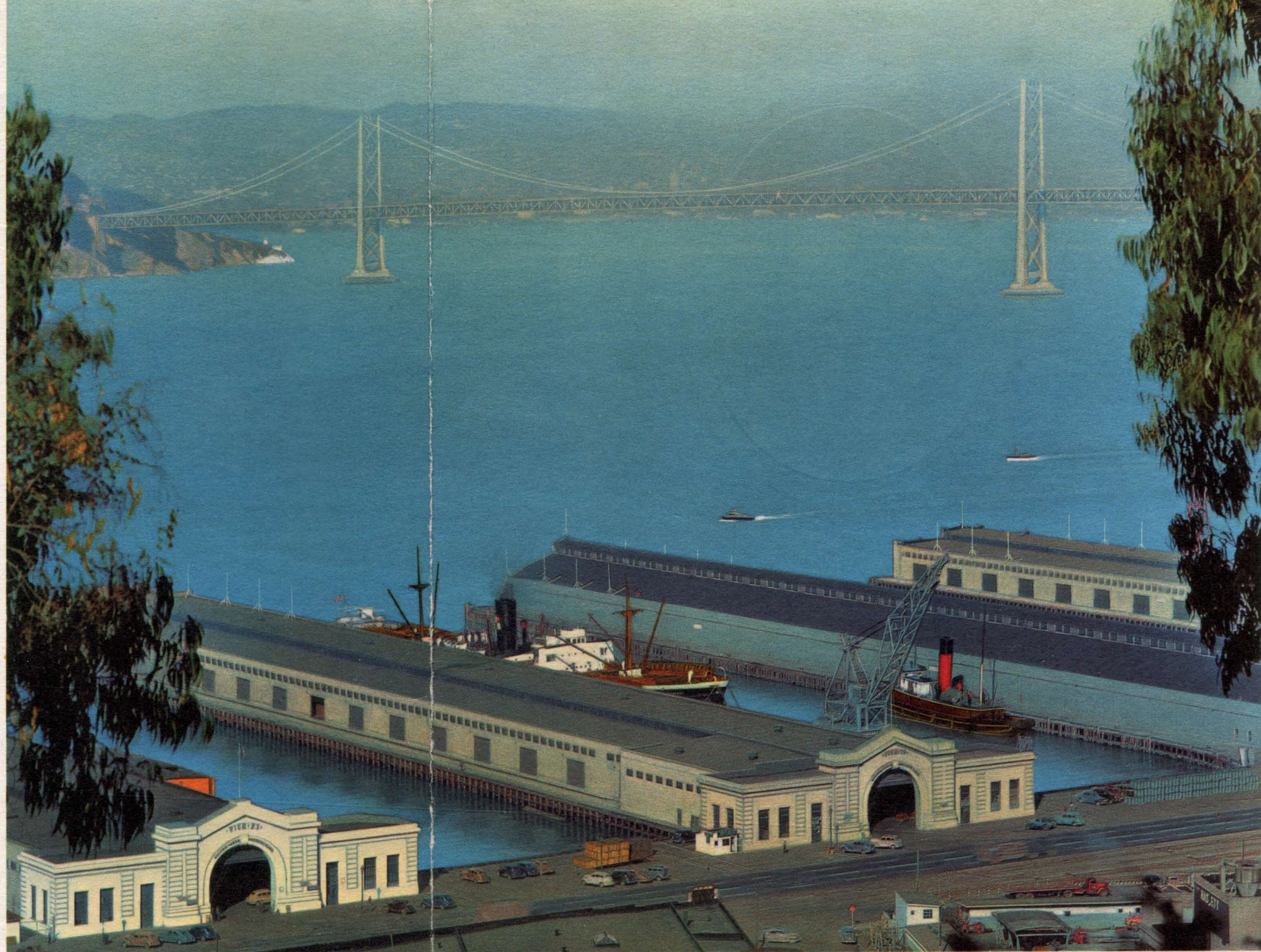




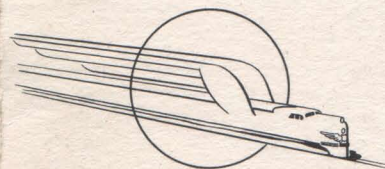
The Embarcadero, sometimes called "The Street of Ships" and formerly known as "East Street", extends for three and one-half miles along San Francisco's waterfront. Wharves and piers jut out into the bay along its entire length. Here one may see ships from far-away places unloading the goods of foreign lands and taking on cargoes of much-needed supplies for their home countries. Along the west side, facing the piers, are the stores and lodging houses frequented by foreign sailors and longshoremen.

Crossing the bay by ferry between Oakland and San Francisco, you pass under the towering San Francisco-Oakland Bay Bridge at the West Bay sector which connects the San Francisco approach with Yerba Buena Island. On the Island the highway goes underground through a double deck tunnel 76 feet wide by 50 feet high, the largest bore tunnel in the world, and emerges on the East Bay sector and continues at an oblique angle to the eastern approaches of Berkeley and Oakland. This massive structure of concrete and steel is over eight miles in length, including the Island tunnel. Open to vehicular traffic only, the bridge is a double-deck structure, with six traffic lanes for automobiles on the upper level, and three truck lanes and two interurban tracks on the lower level. The bridge is illuminated at night with yellow sodium vapor lights which can penetrate thick fog.

Designed and constructed by the Department of Public Works of the State of California, the San Francisco-Oakland Bay Bridge stands as a mighty monument to the vision and foresight of modern-day San Franciscans who long dreamed of such a bridge and set about with determination and courage to make that dream come true.



In the foreground, the Embarcadero, where ships of the world put off and take on cargoes, with the San Francisco-Oakland Bay Bridge looming in the background.



Streamliner

"CITY OF SAN FRANCISCO"



*Dinner in honor of
David M. Blanke*

Vice President, State Stores Division

Saturday, July 7, 1951

Horizons Unlimited

Seagram Distributors of America

Aboard the

Seagram City of San Francisco Special



Menu

ORANGE AND GRAPEFRUIT COCKTAIL

SALTED NUTS

GREEN OLIVES

OLD FASHIONED MARYLAND BLACK BEAN SOUP WITH SHERRY

BROILED LAKE SUPERIOR WHITEFISH, VENITENNE BUTTER

TOURNEDOS OF BEEF TENDERLOIN, CHAMPIGNONS

FRIED HALF YOUNG CHICKEN, GRAPE FRITTERS

ROAST PRIME RIB OF 4-H CLUB BEEF AU JUS

SNOWFLAKE POTATOES

STRING BEANS, BACON CRISPS

THE SALAD BOWL, CHEF'S DRESSING

HOT BLUEBERRY MUFFINS

PEACH MELBA

CHOCOLATE SUNDAE

CHILLED MELON

YOUR CHOICE OF CHEESE, TOASTED SALTINES

COFFEE

TEA

MILK

ICED TEA OR COFFEE