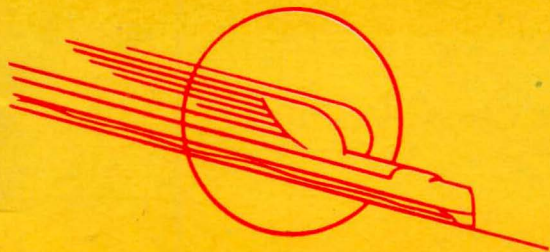
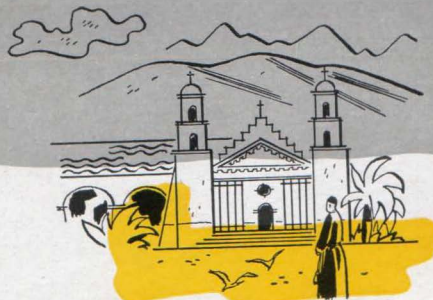


Streamliner
"CITY OF LOS ANGELES"



Streamliner

"CITY OF LOS ANGELES"
(extra fare)



There is no faster train
between Chicago and Los Angeles



CHICAGO & NORTH WESTERN SYSTEM
UNION PACIFIC RAILROAD

"City of Los Angeles"

It's very easy for travelers to become enthusiastic about the Streamliner "City of Los Angeles" operating daily between Chicago and Los Angeles. There's no faster train between these two great cities—only 39¾ hours en route.

Diesel power makes possible a swift, smooth ride. Passengers marvel over the fact that starts and stops are almost imperceptible.

This modern Streamliner was built for comfort—for restful travel . . . with a variety of smartly styled Pullman accommodations. The comfortable coaches have latest improved leg-rest seats—all reserved—and large restrooms for lounging and smoking.

The "City of Los Angeles" also has distinctive charm. The club cars, for example, are unique in design with colorful furnishings and restful appointments.

The Dining Cars provide a most attractive setting for delectable meals prepared from the finest of western grown foods. Service, by well-trained waiters, is thoughtful and courteous, both in the Dining Car for Pullman passengers, and in the smart Cafe-Lounge Car, where coach passengers enjoy their meals.

Yes, the "City of Los Angeles" might be called "a gracious train," where the train personnel is happy to welcome you as a guest.





The observation-lounge—a favorite place to relax . . .

ON some units of the "City of Los Angeles" there is an observation-lounge car on the rear of the train. This luxurious car has comfortable over-stuffed chairs and divans; a card section; a radio, and a writing desk stocked with distinctive Stream-



. . . or for cards, reading or writing.

liner stationery. There is a representative list of current periodicals and beverage service is offered. Through the broad windows at eye level passes an ever-changing panorama of the West's outstanding scenery.





OUTSTANDING among club cars on the "City of Los Angeles" are the "Hollywood" car and "The Little Nugget" car. The "Nugget" car is in the "gay nineties" motif and features theatrical folk of

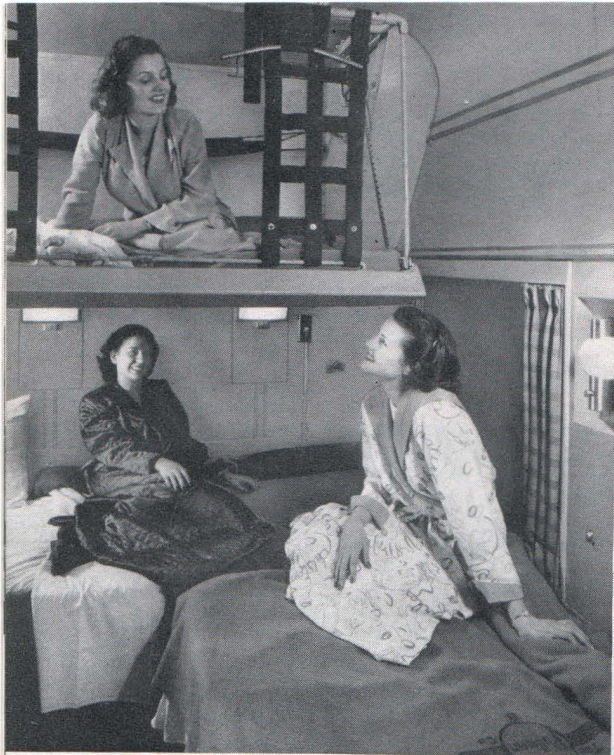
the period. The "Hollywood" car is more conventional. Plastics and synthetics have been used exclusively in its decoration and appointments and the windows are of round Polaroid glass.

The "Little Nugget" club car is charming.



The "Hollywood" car is your club en route.





Homelike comfort in the drawing room

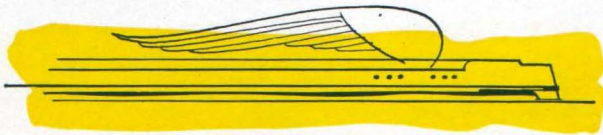
THE comfortable lower makes up into a spacious sofa for daytime use. Some single bedrooms are separated by a folding partition which when thrown open permits the two rooms to be used en suite. The compartment and drawing room both have



The double bedroom is spacious.

upper and lower berths, and the drawing room has a third bed which folds away into the wall when not in use.

All of the private rooms contain complete toilet facilities, electric outlets, mirrored cabinet for toilet articles, wardrobe, and ample luggage space.



SLEEPING CARS on the Streamliner are all of late design, and offer a wide choice of accommodations. There are lower and upper berths, compartments, drawing rooms, roomettes, single and double bedrooms. These various accommodations embody the latest developments, created by top designers, for the convenience and comfort of sleeping car occupants.

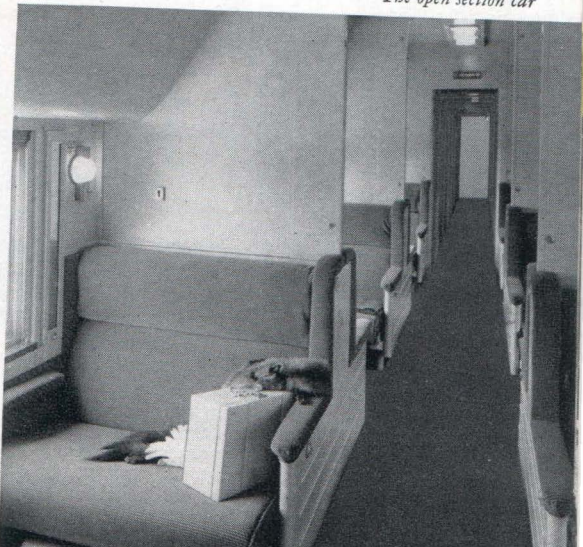
Cut-out view of the Roomette



"City of Los Angeles"

In the open section, sleeping car passengers may obtain upper or lower berths. In either end of these cars there are spacious rest rooms for men and for women. The popular Roomette is a small private room designed for individual occupancy. The convenient folding bed is converted, when not in use, into a lounge seat. Single and double bedrooms have upper and lower berths.

The open section car



"City of Los Angeles"



placed before you, you realize this is dining in the best manner. Smartly-attired waiters and the smiling steward see that service is prompt and everything "just right." Streamliner chefs are men of wide experience in the art of achieving culinary accomplishments that you will long remember. Regular travelers on the "City of Los Angeles" look forward to hearing the soft notes of the chimes announcing another meal period. Meals may, of course, be served in your sleeping car space.

Coach passengers eat in this modern cafe-lounge.



The smart dining car for sleeping car passengers.

THE minute you step into the luxurious dining car you sense that in such delightful surroundings only the finest of foods are served—and you are right! From the gleaming silver and sparkling glassware on a background of canary-yellow napery, to the deft manner in which the savory dishes are





COACH passengers on the "City of Los Angeles" enjoy deep-cushioned seats, with newest improved leg-rests and reclining backs. Pillows may be obtained from the Coach Attendant at a small charge, so you can enjoy sound, restful sleep. There are large dressing rooms for men and for women, with plenty of cloth towels, soap and hot water. These rooms are equipped with comfortable chairs for lounging, and here you may enjoy a smoke. In the cafe-lounge car for coach passengers are radio, magazines, writing desk, beverage service, and card sections.

You can relax in the congenial cafe-lounge.



Leg-rest coach seats provide perfect comfort day and night.

Spacious rooms in coaches, where you may "freshen up" or enjoy a smoke.





WESTBOUND passengers arrive at the beautiful Los Angeles terminal pictured above. Completed and dedicated in May of 1937, the eleven-million-dollar depot, one of the most beautiful in America, is in itself a top attraction to the California visitor and native alike. Covering over forty acres of ground, the vast structure contains every facility for the luxurious comfort of the traveler.

EASTBOUND passengers, traveling beyond Chicago, and changing stations there, may avoid the inconvenience of carrying as well as checking and rechecking hand luggage there. Ask porter for luggage checks and information concerning this service.

Other Fine Streamliners . . .

CITY OF DENVER

Chicago-Omaha-Denver

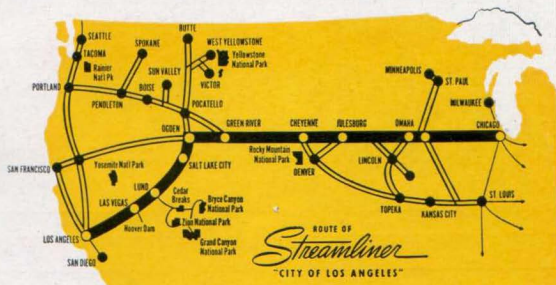
CITY OF PORTLAND

Chicago-Omaha-Portland

CITY OF SAN FRANCISCO (*extra fare*)

Chicago-Omaha-Ogden-San Francisco

All of these trains operate on a fast, daily schedule between the cities shown.



Vacationlands We Serve . . .

Colorado

California

The Pacific Northwest

Yellowstone-Grand Teton National Parks

Zion-Bryce-Grand Canyon National Parks

Las Vegas-Hoover Dam-Lake Mead

Recreational Area

Sun Valley, Idaho

Western Dude Ranches

CHICAGO & NORTH WESTERN SYSTEM

UNION PACIFIC RAILROAD