

COLORADO MOUNTAIN PLAYGROUNDS





PLAYGROUNDS
MOUNTAIN
COLORADO



COPYRIGHT 1931 BY
J. P. CUMMINS
GENERAL PASSENGER AGENT
UNION PACIFIC SYSTEM
OMAHA, NEBR.

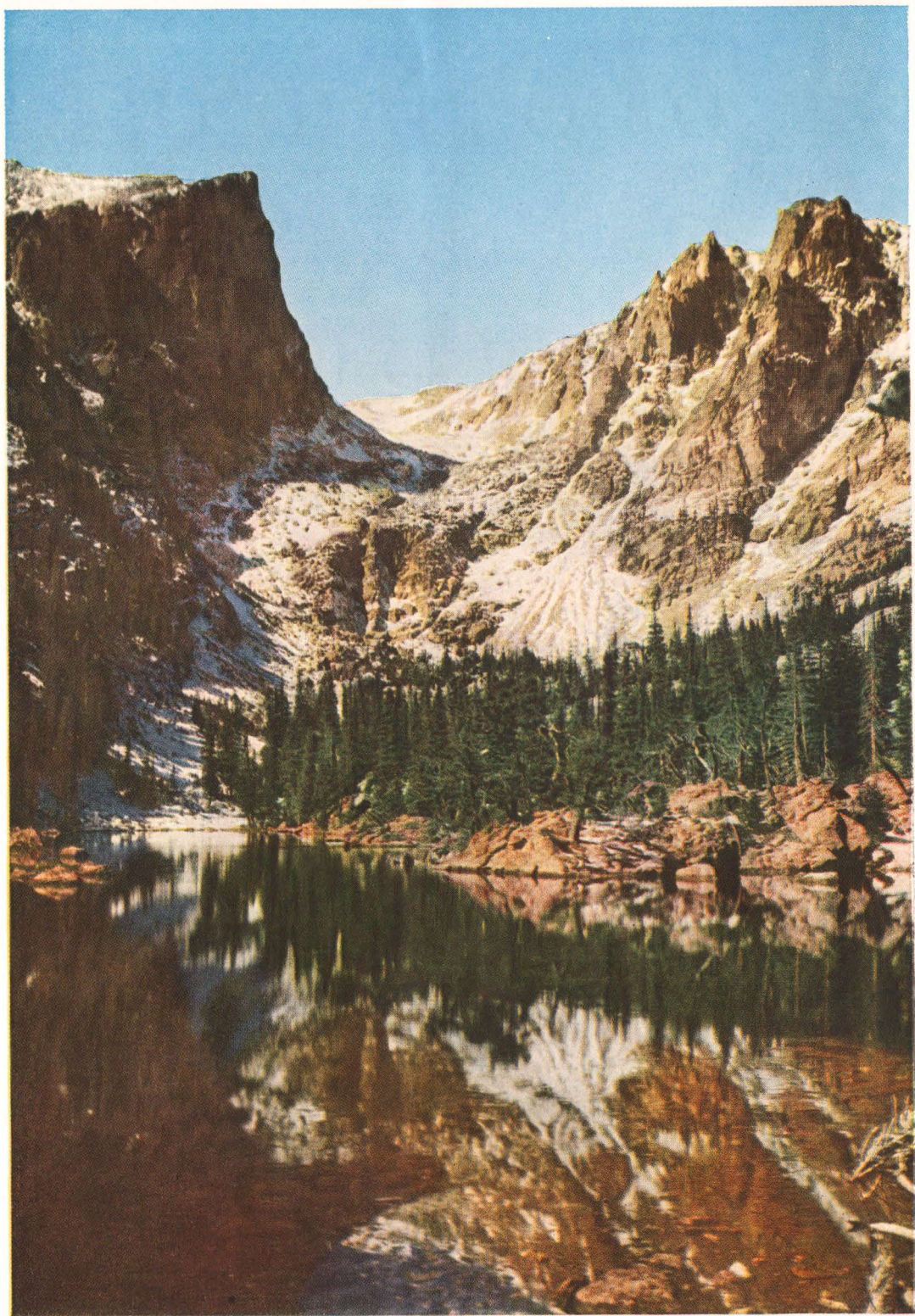


Printed in U. S. A.

COLORADO
MOUNTAIN
PLAY GROUNDS



*Issued by
Union Pacific System*



Dream Lake, in one of the most enchanting settings of Rocky Mountain National Park, is only one of countless mountain lakes that glisten like jewels in the Colorado Rockies

“Where the West Is Nearest”



LONG in those summer days when city pavements are hot to the touch, and city air is dry and dusty, there comes to almost every city-dweller the vision of a cool, green land of streams and waterfalls, of pine forests and quiet valleys, of snow-capped peaks that reach toward the blue of a western sky.

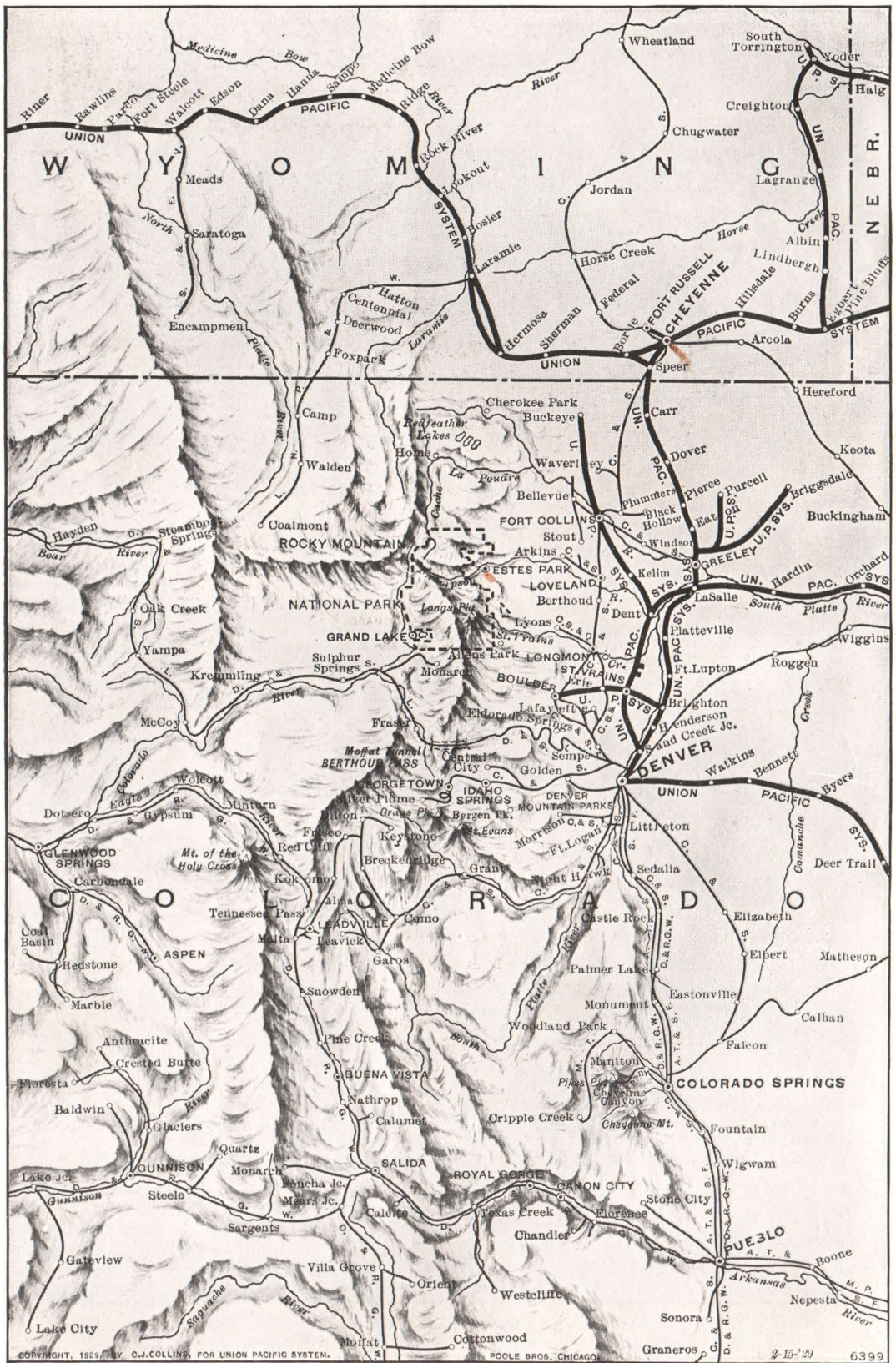
To hundreds of thousands of people Colorado has been the answer to that yearning—Colorado, in the heart of the Rockies, where the mountains are only an overnight train ride from most of the United States.

It is no wonder that Colorado is so popular, no wonder that in 1930 alone, over three million people visited the state. Not only is two-thirds of the state within the Rockies, but it is criss-crossed in every direction with highways, railroads, foot trails and horseback trails. In Colorado, the distance you put between yourself and the rest of the world is limited only by the time at your disposal—and by your inclinations. The whole state is worth seeing, easy to see.

Vacations are always all too short and vacation time is precious. Traveling by train to Colorado enables you to start your vacation where the scenery begins.

Or, better still, take the Union Pacific and start your vacation as you board one of its fine trains. From all points of the compass, fast Union Pacific trains speed to Denver, and one of the most famous of its fleet is named in honor of Colorado's state flower, the Columbine.





Map of Union Pacific Lines and the Colorado Mountain Playgrounds



Snow Banks Linger All Summer in Colorado's Higher Elevations

The Beauty of Colorado Skyscraping Peaks

Mountains . . . Colorado; Colorado . . . mountains. You just can't separate the two. The trail to a Colorado vacation is a mountain trail, and when you make up your mind to visit the one you are on your way to an intimate acquaintance with the other.

Even before you reach Denver, you begin to realize this. As you traverse the plains of Nebraska or Kansas, entering Colorado from the east on the Union Pacific, suddenly you see mountain peaks showing themselves above the horizon; "That's Colorado," says someone, and suddenly Colorado's mountains become real to you.

Up Mountain Trails

And the Colorado Rockies are not for the experienced mountain climber alone. Many of them are so easily climbed that an amateur mountaineer can make the hike to their summits and back in a single day.

The trails wind upward through masses of wild flowers, in which the pastel blue of Colorado's state flower, the Columbine, is conspicuous for its beauty. You skirt enormous boulders and deep chasms, with ever-widening





Mountain Fishing at its best—in Colorado

views and far-flung panoramas of the surrounding country. Occasionally you look downward for great distances, into lakes that glisten like sapphires in green valleys far below.

As you come to a height of 12,000 feet or so, you are at timberline. Here forest monarchs have waged fierce battles with the icy elements. The few trees that have survived are bent low to the ground, trunks and branches bowed and twisted into weird, fantastic and pitiful shapes.

Shy Friends Along the Way

The man-made trails cross others that lead still deeper into the forests, still higher into the mountains. The bird and animal life of Colorado is one of its most interesting features. In the National Parks, of course, no trap is laid, no eye travels along a gun barrel, and in the state's national forests all wild life has protection. Beavers build industriously in Colorado streams . . . deer tread lightly through the forests . . . an occasional bear may be dis-



The east face of Longs Peak drops precipitately from the summit, 14,255 feet above sea level, to the icy waters of Chasm Lake, more than 2,000 feet below



The Never-Summer Range from Highway in Rocky Mountain National Park

covered . . . bighorn sheep scale the high peaks . . . woodchucks, rabbits, are plentiful. Bird song fills the forests, for a wealth of birds is one of the riches of this state.

Ways to Play

What besides mountain climbing is there to do during a Colorado vacation? Allow us to ask you, "What would you like to do?"

Perhaps fishing is your especial joy. Then stand by a swift mountain stream and cast for trout—and land them. Information as to the best streams and lakes and full equipment is available in nearly every city and town.

Swimming and boating are special attractions at the many mountain lodges which have their locations on the lake shores. There are several golf courses overlooked by mountains, open to you at country clubs, at the best resorts, and on the public links. Smooth highways may lure you to a vacation of long or short trips by motor.

Whatever you do and wherever you go in the lofty Colorado Rockies you will enjoy to the very utmost, for air, scents, sounds and endless breath-taking panoramas will keep you alive to the keenest enjoyment of each moment of your vacation.





A Vista of the Continental Divide across Denver's Business District

Denver—The Gateway

Denver is a city everyone wants to see, the natural gateway to a Colorado vacation over the Union Pacific. It lies on the plains at the eastern base of the Rockies and is a mile above sea level. The mountains are only 13 miles away, and seem to rise almost at the city's back door. From Denver dozens of sightseeing trips can be taken daily—by train, trolley and motor. While few are content with one visit to the beautiful scenes included on these trips, it is perfectly possible for travelers on limited schedules to go in and out of Denver on such tours and see many of the most famous sights of Colorado.

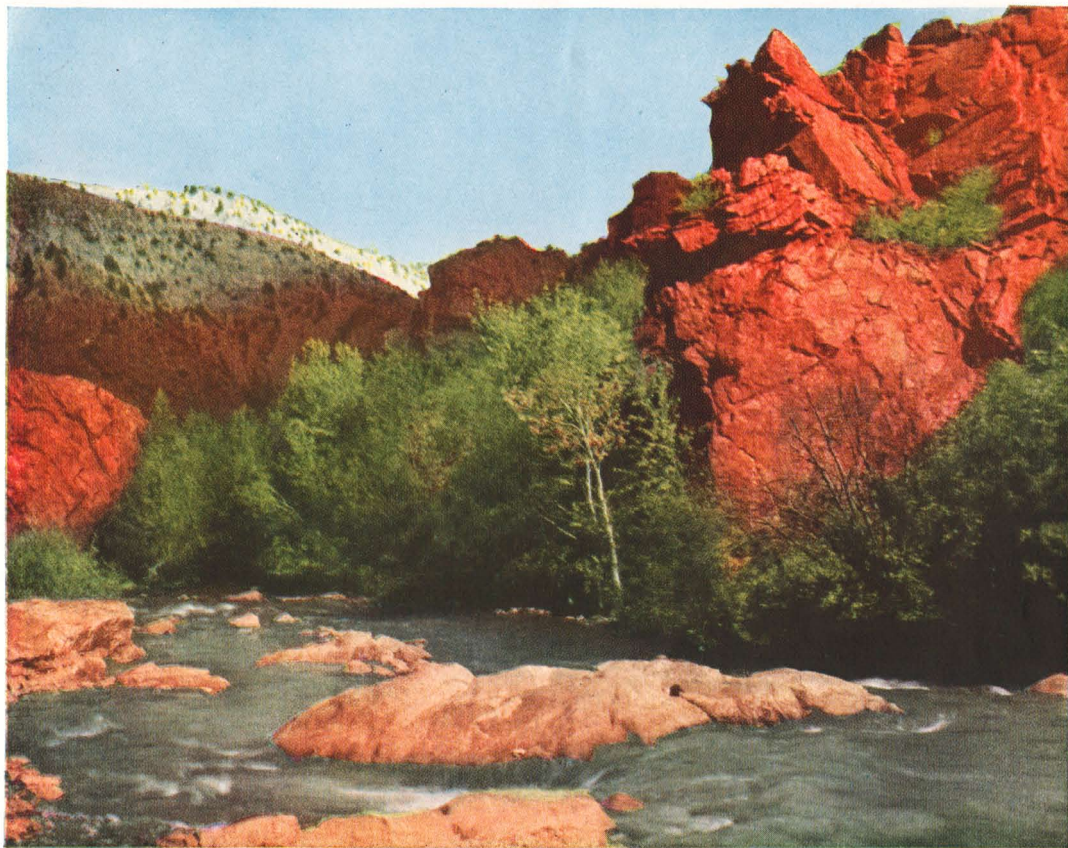
Denver itself, a city of 325,000 people, surrounds you with fine buildings, 42 parks, inviting restaurants and theatres, beautiful hotels, stores and shops. Within the city are literally hundreds of places to stay, from luxurious hotels downtown to rooms in private homes in the residential section. Carefully planned, a Colorado vacation can be made most economical for those whose vacation funds are limited.

From the city, you can cover miles and miles of scenic boulevards on sightseeing trips which cost very little, and street-car sightseeing is also recommended. A complete information service is maintained by the Colorado Association at the Denver Union Station, and at an uptown office, 514 Sixteenth St., to assist you in your plans.





In the rugged beauty of the near-by Rockies, Denver owns and maintains a series of mountain parks, connected by fine highways as shown in the illustration above



Bear Creek, along Denver Mountain Parks Drive

Denver Mountain Parks

One of the first things to do in Denver is to take the Denver Mountain Parks drive—a 65 mile trip by bus which transports you to a group of parks in the foothills and on one of the lofty peaks of the near-by Rockies—parks owned by the city of Denver and connected with the city by fine roadways. Resorts, camps and lodges are tucked in the pockets of the mountains all through the Parks. You can spend a vacation here and scarcely be able to believe the city is so near. In Genesee Park, 800 acres have been enclosed as a game preserve. Elk, deer, buffalo and mountain sheep roam there at will.

The climax of the Denver Mountain Parks drive is the summit of Lookout Mountain. Here you see a series of tremendous panoramas. Off in the distance are the high snow-capped peaks. In a green valley below is the town of Golden, like a toy village with streets scratched upon the floor of the valley.





Cody Museum and Grave of Buffalo Bill, on Summit of Lookout Mountain

“Buffalo Bill’s” Grave

It is on the crest of Lookout Mountain that Colonel W. F. Cody, the revered “Buffalo Bill” of Western frontier history, is buried. In the Cody Museum near-by are historic relics of his life, under the care of Johnny Baker, formerly Cody’s crack marksman. He will show you Buffalo Bill’s famous breech-loading rifle “Lucretia Borgia” said to have killed 4,000 buffalo under the unerring aim of the great hunter. Thus construction gangs building the Kansas Division of the Union Pacific System were fed.

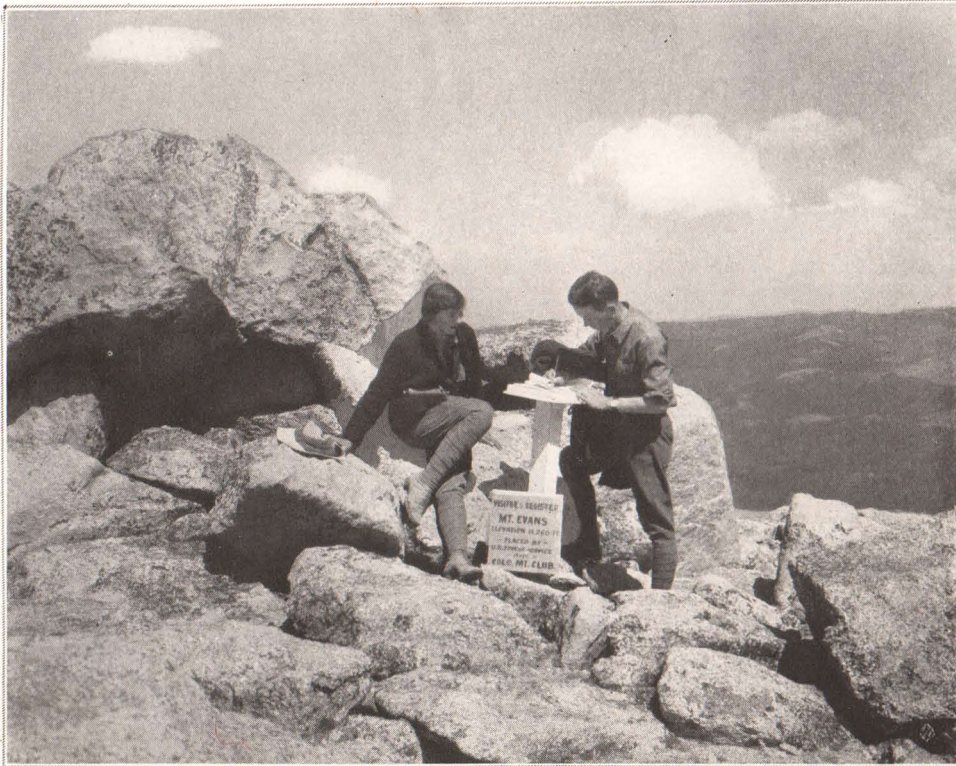
The 65-mile tour of the Denver Mountain Parks may be made at a cost of \$4.00 for bus transportation.

To Echo and Summit Lakes

Leaving Denver at 9:30 in the morning and getting back at five in the afternoon, you can cover 108 miles by motor, going over the shoulders of Squaw and Chief Mountains to a height of 11,000 feet to Echo Lake for lunch. You will enjoy the peaceful beauty of this mountain lake which mirrors tall pines and blue Colorado sky. Along the way to and from Echo Lake there are splendid



Bear Lake, in Rocky Mountain National Park, is sought because of its seclusion and primitive beauty. The picture shows the noble head of Longs Peak in the distance



Signing the Register at Summit of Mt. Evans, 14,260 Feet above Sea Level

views of many of the highest peaks of the Rockies—from Pikes to Longs. The round trip is made at a cost of \$8.00.

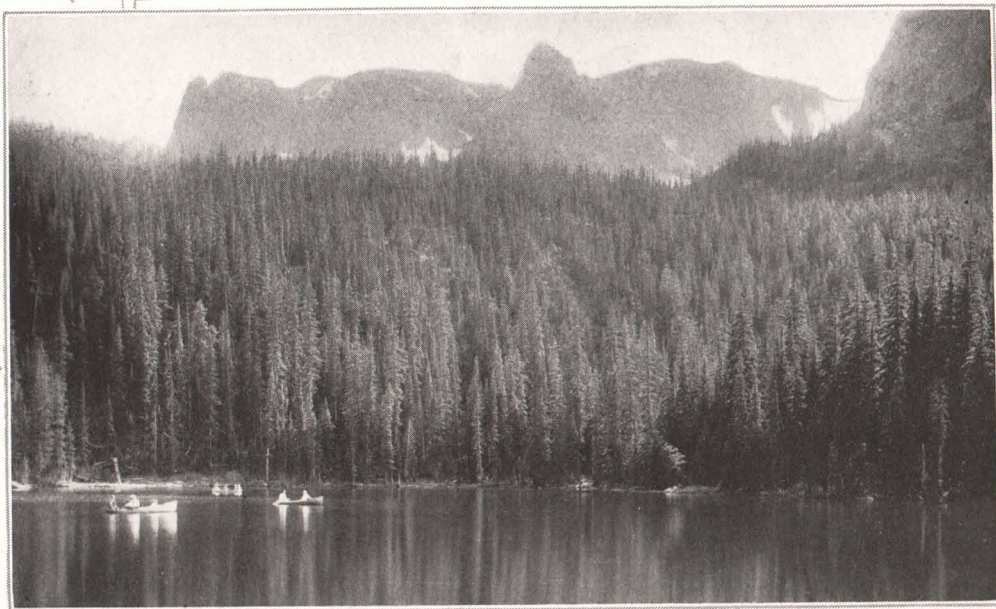
Other Trips Without Number

There are many other trips from which to choose. An outstanding one among them combines Echo Lake, Georgetown Loop and Mt. Evans in a thrilling 157-mile drive and is made in one day by motor-bus at a cost of \$10.00. From Denver the route is through Golden to Lookout Mountain; then via Idaho Springs and Clear Creek Canyon to Georgetown and Silver Plume, reminiscent of gold and silver mining camp days. Between these two towns the C. & S. narrow-gauge railway forms the noted Georgetown Loop, a triumph of engineering skill 50 years ago. Returning to Idaho Springs for lunch, the trip is continued to Echo Lake and on to Summit Lake near the crest of lofty Mt. Evans. Return to Denver is made through Bergen Park and Bear Creek Canyon.

Then there is the trip through the Continental Divide on the railroad, by way of the Moffat Tunnel—into the midst of the great peaks of the Rockies. These few examples might be multiplied many times over.



Loch Vale, in Rocky Mountain National Park, is a vast granite
expanse of glacial origin; walled by several lofty peaks it is one
of the transcendent spectacles of Colorado



Mountain-rimmed Estes Park Valley and the Big Thompson River

Rocky Mountain National Park

How to Reach It

Rocky Mountain National Park is one of the 22 great areas set aside by the government for the preservation of primitive scenic beauty and wild animal and bird life. It includes the finest grouping of mountain scenery in the Colorado Rockies—substantially the whole 400 square miles being well above 9,000 feet in altitude.

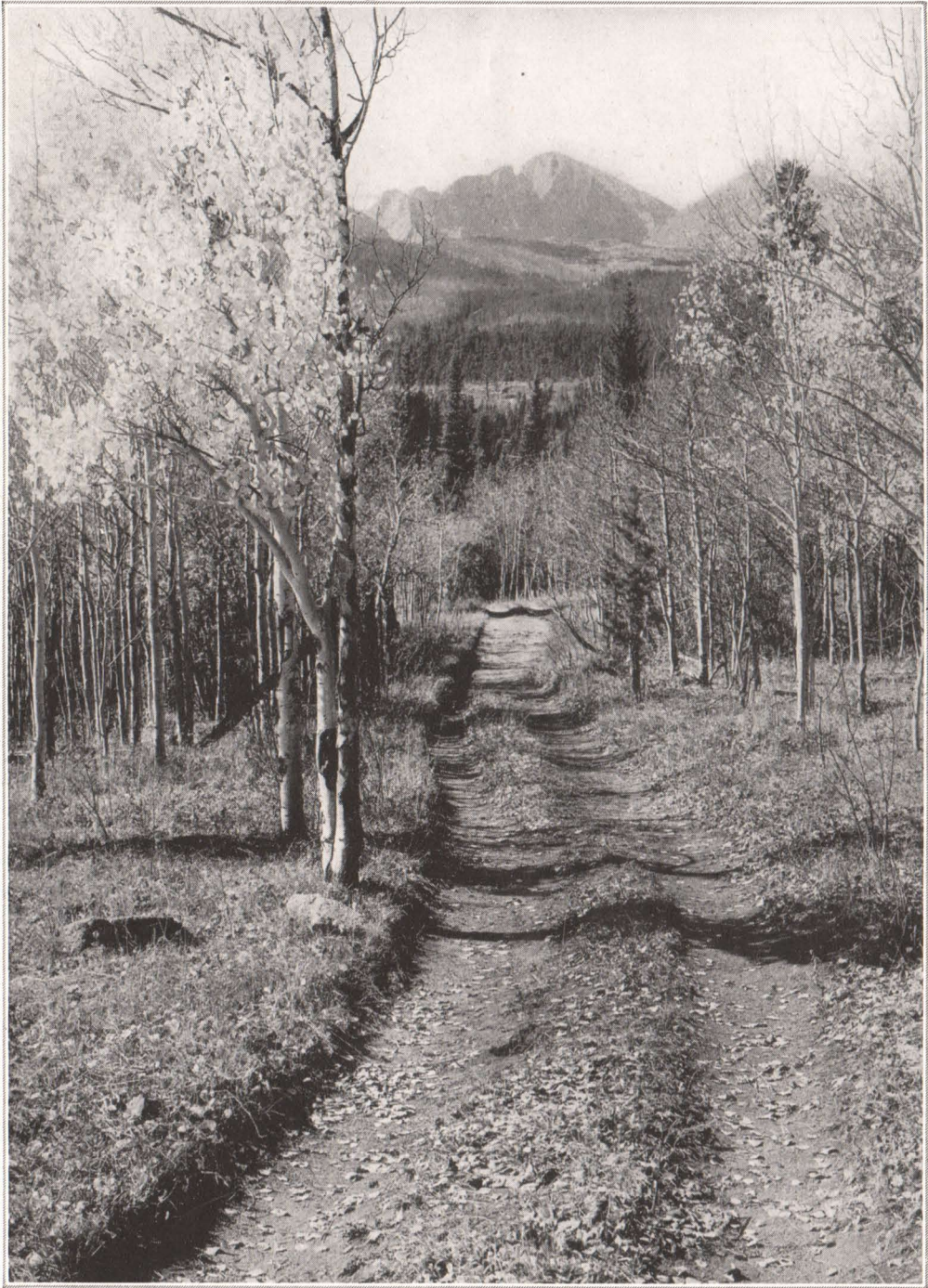
Denver is the chief gateway to the Park, and regular bus service is maintained from the city every day. Or, you may go by rail to Ft. Collins, Boulder or Greeley, thence by motor bus to the Park.

Where to Stay In and Near the Park

Picturesque inns and camps offer food, lodging, horses and equipment near Estes Park Village, the main entrance to Rocky Mountain National Park. Cottages may be rented in the village itself, if you wish to linger there and explore the surrounding Rockies.

But the resorts of Estes Park Village are only a few of those at which you may stay while seeing Rocky Mountain National Park. Every beautiful canyon has its secluded lodge tucked away in its depths; every river course has one or more along its shores. As a result, you have every opportunity of finding exactly the kind of place you want





Longs Peak and the aspens during Indian summer are an enchanting sight.



Longs Peak, dominant figure of the Estes Park Region

—from the standpoint of both price and location. At most of them you will find saddle horses, guides, fishing equipment, and always they are prepared to give you the proper information on how best to see the Park.

Seeing Rocky Mountain National Park

The ideal way to see Rocky Mountain Park, of course, is to make headquarters at either Estes Park Village entrance or Grand Lake entrance or one of the mountain hostelrys near-by, spending some time at several lodges within the park, exploring to your heart's content.

Those whose time is limited, however, had best take the "circle tour" operated from Denver (Map, page 41). Details of the cost of these tours, time limits, etc., are given on page 25.

The Circle Tour includes one of America's finest mountain motor trips. Suppose you start from Denver. In one of the big automobiles of the Rocky Mountain Parks Trans-





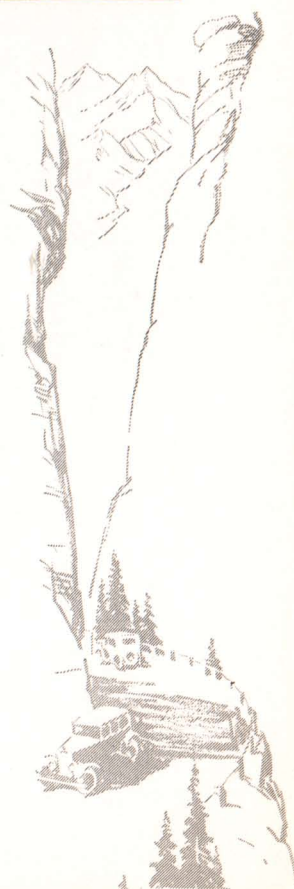
Looking across the valley of Estes Park Village

portation Company, you speed northward, paralleling the Rockies, and turning west, enter the mountains through Big Thompson Canyon.

Estes Park

Your ride through Big Thompson Canyon—thrilling, spectacular—brings you out of the great gorge into Estes Park. Estes Park was the birthplace of Rocky Mountain National Park. Its history as a mountain playground and resort region dates back to 1865. When the greater Rocky Mountain National Park was set aside in 1915, most of Estes Park was included in its area. You see it as a great and charming highland valley stretching from the impatient rushing Thompson River to the encircling mountains. It forms the eastern entrance to the Park.

If you are leaving the Circle Tour for a longer stay in the Park, you may choose to make your headquarters somewhere in the bewildering beauty of Estes, but the regular tour passes on, now, into the Park's boundaries.





Bear Lake and Hallet Peak, in the Heart of Rocky Mountain National Park

On to the Divide

The route from Estes Park Village follows Fall River westward past the fish hatchery to the charming valley between the huge moraines in Horseshoe Park and thence into the mountains where the river plunges down its channel in a number of foaming rapids and musical waterfalls, the most noted of which is Chasm Falls where a few minutes stop is made. Here the highway, in a series of switchbacks, climbs the craggy side of Mt. Chapin, a peak of the Mummy Range, disclosing fine views of the valley and of the long snow fields on Trail Ridge across the canyon. Passing lovely wild-flower gardens, it crosses the rim of Fall River drainage basin, north of Iceberg Lake, at a point known as Fall River Pass with an elevation of 11,797 feet, and for several interesting miles follows the wind-swept crest of the Divide. At Fall River Pass is a ranger's stone shelter cabin where the buses stop for a few minutes. In the cirque below the cabin is a great bank of snow that lingers all summer.

The mountain panoramas visible from this lofty stretch of highway are of breath-taking grandeur and include volcanic Specimen Mountain, the Never-Summer Range, the Medicine Bow Range reaching far northward into Wyoming, and the southward sweep of the Continental Divide and its spurs as far as Pikes Peak, a parade of snow-capped giants fading into the distance.



A fine highway parallels the dashing Big Thompson River through its spectacular gorge, one of the supreme scenic spectacles of the "circle tour" by motor from Denver



Grand Lake nestles in a basin rimmed by lofty mountains

Following the Colorado River

The Continental Divide is crossed at Milner Pass and you wind downward to the valley of the Colorado River. Walled on the west by the Never-Summer Range, the valley is a continuous delight. It leads you to Grand Lake, western entrance of the Park, for an overnight stop.

You may want to stay longer at Grand Lake, journeying in to see the peaks and glaciers, lakes and waterfalls of the southern part of the Park. Shelter cabins permit leisurely exploration of all the most beautiful sections of Rocky Mountain Park, trips are taken to the valleys and summits viewed only from a distance on the Circle Tour.

On past Empire and into Idaho Springs goes the motor bus. The metal and mineral mines of Idaho Springs yield ores from which radium was first extracted.

Along Clear Creek Canyon winds the road until you realize that you are entering the Denver Mountain Parks; down from Lookout Mountain, past historic Golden, and the thrilling 240-mile journey ends in Denver.



Horseshoe Park, on the Fall River Road to Grand Lake

Linger in the Park if You Can

We have just described the best way to see Rocky Mountain Park for one whose time is limited. But there is so much you *should* see, that you ought to plan stop-overs if you possibly can. There are lakes—Lawn Lake in the north, high at timberline, with a shelter lodge on its flower-strewn shores; Iceberg Lake in a chasm at the head of Fall River Canyon, with great cakes of green ice on its waters. There are the peaks—Longs Peak, a monarch by virtue of its 14,255 feet, easily scaled by horseback to timberline and on foot to the matchless view from the summit.

The small inset map on page 41 shows the route of the automobile circle tour from Denver, 240 miles of mountain motoring for \$25.50. Three "all-expense" tours are also operated over this route, occupying two, three and four days respectively. The first costs \$33.00, the second \$39.00 and the third \$45.00, including transportation, meals and lodging en route.





This illustration shows some of the best preserved of the ancient cliff dwellings in Mesa Verde National Park, in the high table-land section of southwestern Colorado



Gem Lake and Longs Peak across Estes Park Valley

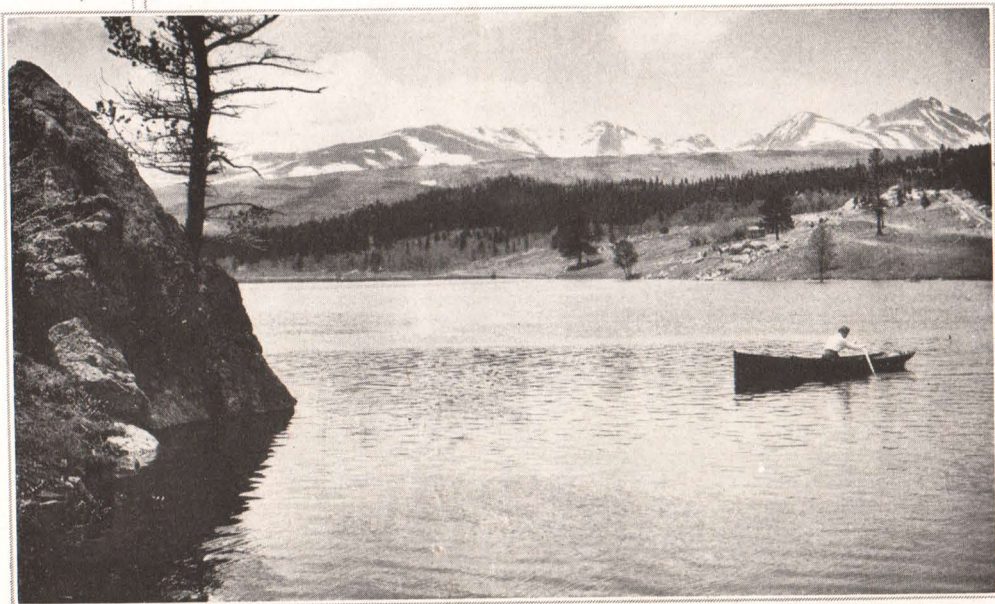
Mesa Verde National Park

Among the Indians who were America's earliest inhabitants were the cliff-dwellers. Their homes were pueblos built of stone or sun-dried bricks, on the shelf-like projections of the mesa cliffs. These cliff dwellings of the Pueblo Indian tribes gave adequate protection from severe winter storms. Wild animals could not mount the steep cliff walls, into which the Indians cut foot and hand holds for their own convenience.

In Mesa Verde National Park, a small area in Southwestern Colorado, a group of the largest and best preserved of all the ancient cliff dwellings in this country is picturesquely located. This is the only National Park yet created for the preservation of antiquities. You will find the unique construction and ornamentation of these early homes a fascinating sight.

Mesa Verde may be reached by rail or auto from Denver. Its colorful canyons and lofty mesas deserve a place in your itinerary. During the summer season a camp for tourists is maintained in the Park in the vicinity of the most important cliff dwellings.





Glacier Lake and the Snowy Crests of the Continental Divide, near Boulder

Boulder—Ft. Collins—La Salle—Greeley

Northwest from Denver 35 miles is the little city of Boulder, a popular starting place for trips to glaciers and peaks in and near Rocky Mountain National Park. The University of Colorado is here—its campus overhung by the Rockies. Each year the famous Colorado Chautauqua holds its sessions in Boulder during June, July and August. A cottage colony with a central dining hall is on the grounds and furnish accommodations to large numbers of visitors during the summer months.

Only 27 miles from Denver is the pretty town of Eldorado Springs, so named because of its hot and cold springs. High mountains loom above the springs, and trails and highways lead into their depths.

Northward from Denver are several other charming little cities, among them La Salle, Greeley and Fort Collins. Greeley and Fort Collins are on motor bus routes into Rocky Mountain National Park.

Greeley, seat of the Colorado State Teachers College, was settled by New England colonists under the patronage of Horace Greeley in 1870, about the time Greeley's slogan, "Go West, young man," was becoming famous. Fort Collins, home of the State Agricultural College, is on the Cache la Poudre River and is a gateway to a whole host of resorts which are tucked away in the mountains for fifty miles or more up the river.



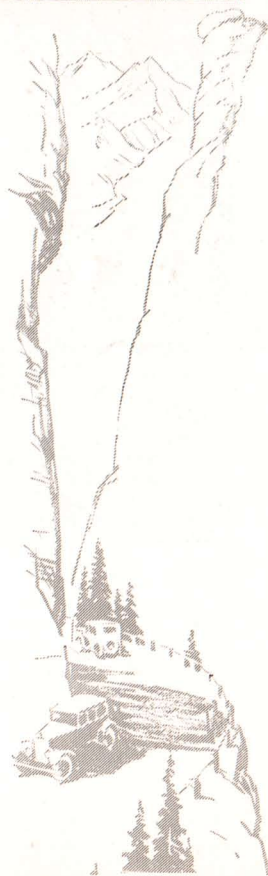
Pikes Peak through the Gateway to the Garden of the Gods

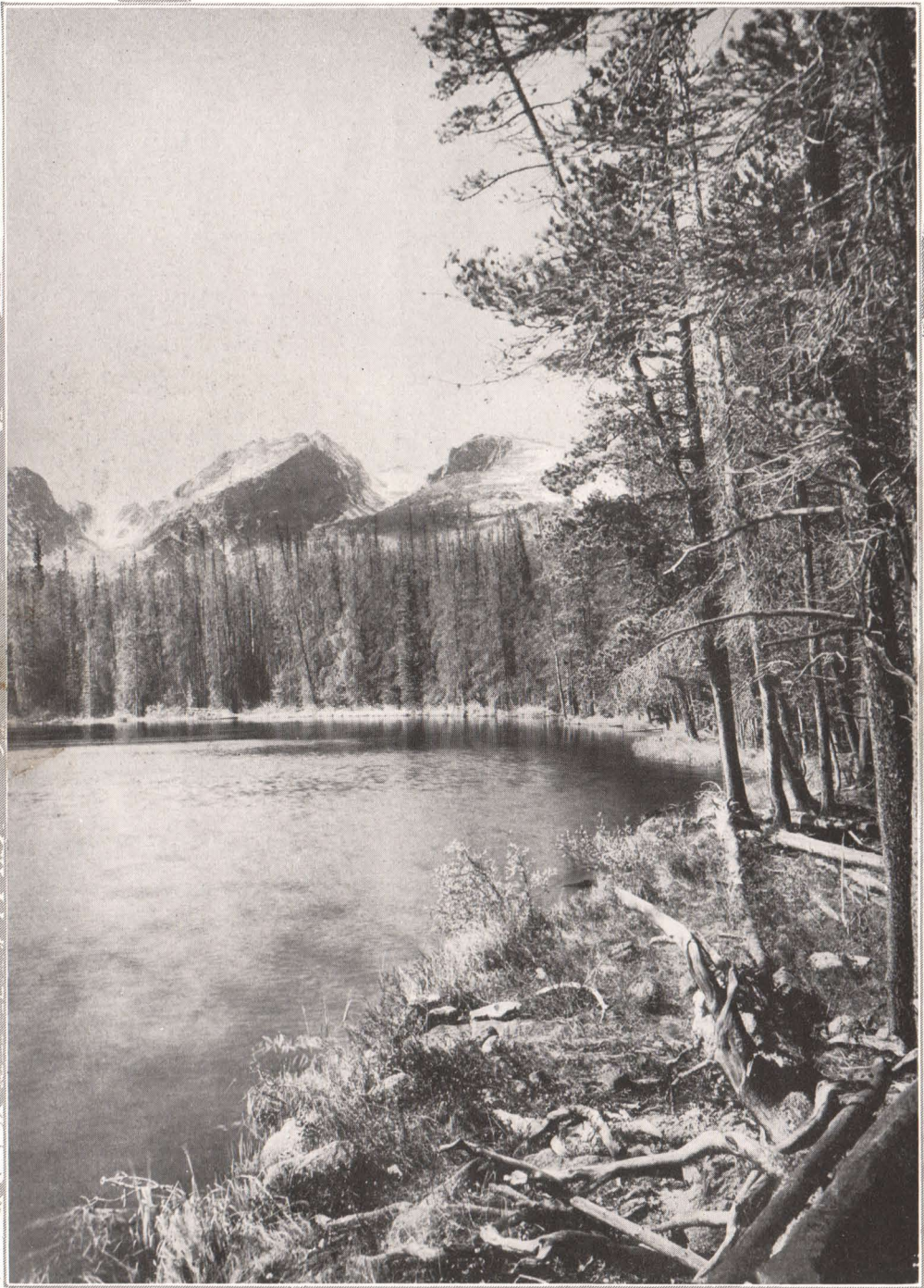
Colorado Springs and Pikes Peak

You go to Colorado Springs to see Pikes Peak. There are other rewards—you find an attractive modern city, with a climate that is sunny, cool and dry, an ideal place to stay while you take jaunts here and there in the whole Pikes Peak region. Colorado Springs is 75 miles south of Denver, from whence it may be reached by rail in two and one-half hours.

There will be no trouble in finding pleasant accommodations while you are in Colorado Springs, for the Chamber of Commerce has a free information bureau to assist you, and you'll have no trouble suiting taste and purse.

Other trips beside the chief one, to the summit of Pikes Peak? Yes, many of them. For example, Cheyenne Mountain, topped by an Indian pueblo, with a herd of elk and deer along the way, and dramatic views on all sides. South Cheyenne Canyon with beautiful Seven Falls is not far away.





Bierstadt Lake is a favorite haunt of artists who seek to portray the enchanting tints of Colorado's colorful mountain scenery. Sharply eroded Hallet Peak rises above it



Cog Railway Train and Observation Tower on Summit of Pikes Peak

The trip to Pikes Peak itself requires six miles by rail or trolley to Manitou and then to the top by the Cog Road, burros, or by automobile. The little town of Manitou is a noted watering place whose springs were known for their curative properties to the early Indians.

Within walking distance of Manitou are Williams Canyon, the crystalline-chambered Cave of the Winds and the Pueblo Indian Museum on Phantom Cliff.

Other Sights Near Colorado Springs

One of the most famous of Colorado Springs' attractions is the Garden of the Gods, to the northwest of the city. Here red sandstone has been eroded by wind, rain and frost into numerous fantastic shapes.

Cripple Creek, around the west and south slopes of Pikes Peak, was once the greatest mining camp in the world. It is still one of the most interesting mining centers in Colorado.

To the south and southwest of Colorado Springs are Pueblo and Cañon City; the former is the second city in size in the state and an industrial center as well as being the gateway to San Isabel National Forest.





Beautiful Seven Falls, in South Cheyenne Canyon near Colorado Springs, is one of nature's most exquisite show places in the Pikes Peak region



Camping Areas Are Provided in the National Parks and Forests of Colorado

Colorado National Forests

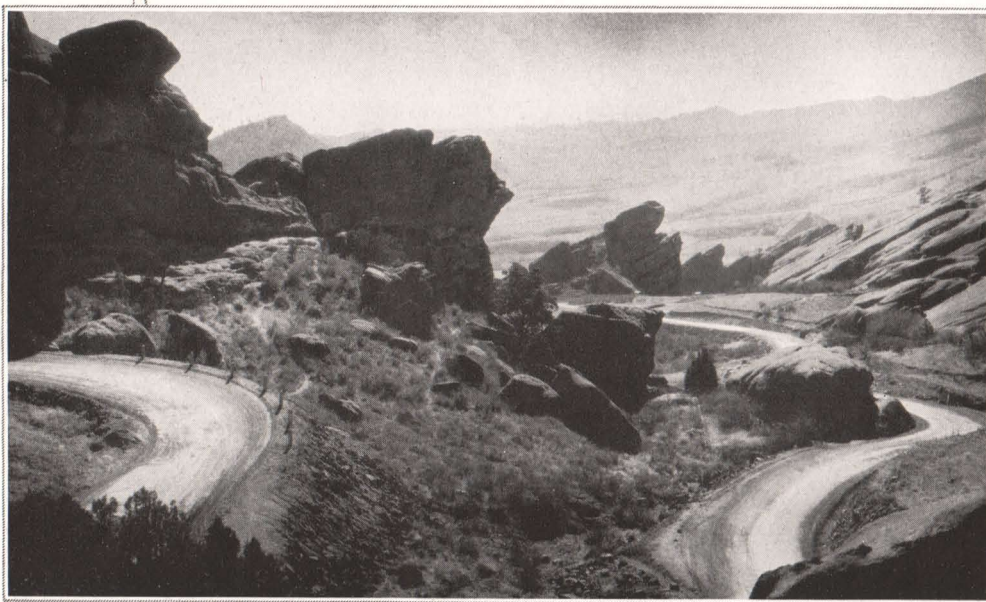
The best hunting and fishing in Colorado is found within the State's National Forests. Their most picturesque parts can all be reached on foot or on horseback by well-marked trails; nearly all Colorado's 46 peaks above 14,000 feet high, lie within their boundaries, and there are several hundred miles of motor roads.

Locations for permanent summer homes can be rented for small sums, and camping is very popular. Proper camp sanitation, care with fire and observance of the State fish and game laws are the only requirements prescribed by the Forest Service whose rangers and other officers gladly furnish service regarding routes, camping grounds, fishing and other matters. They are eager to help visitors enjoy the forests and make them truly a part of our national playgrounds. The Service's telephone lines can be used in emergencies and its registry system simplifies the delivery of messages. The district office is in the Federal Building, Denver.

Colorado Forest

Three National Forests easy to reach from Denver are the Colorado Forest, the Arapahoe, and the Pike. The Colorado Forest is largest of the three. It lies northeast, east and south of Rocky Mountain National Park.





Red Rocks Drive, in Denver Mountain Parks

In the Colorado National Forest to the west of Boulder, is a veritable wonderland of lofty, snow-capped peaks and age-old glaciers, still grinding and carving the landscapes.

The Arapahoe Glacier, the largest in the Colorado Rockies is the property of the City of Boulder—the source of her water supply, while some five or six other living glaciers are within the boundaries of the Colorado National Forest and may be reached by the U. S. Forest Trails.

Trips to the Colorado Forest

One may stop at any one of the numerous inexpensive resorts west and northwest of Boulder and make scores of interesting trips on foot or horseback into the high country along the Continental Divide and within the National Forest.

Automobile and hiking trips may best be made into the Glacier Region of Boulder County with the Colorado Mountain Club or the Rocky Mountain Climbers' Club.

Daily trips via Denver & Interurban motor buses to Boulder, thence by automobile through Boulder Canon, over highways paralleling the Continental Divide to Allens Park, returning to Boulder by a different route. Costs \$6.80 to \$9.

Tours covering longer periods with stops in Boulder and mountain resorts may be arranged on application.



A glimpse of the Sky Line Drive near Cañon City, Colorado

Arapahoe-Pike-San Isabel

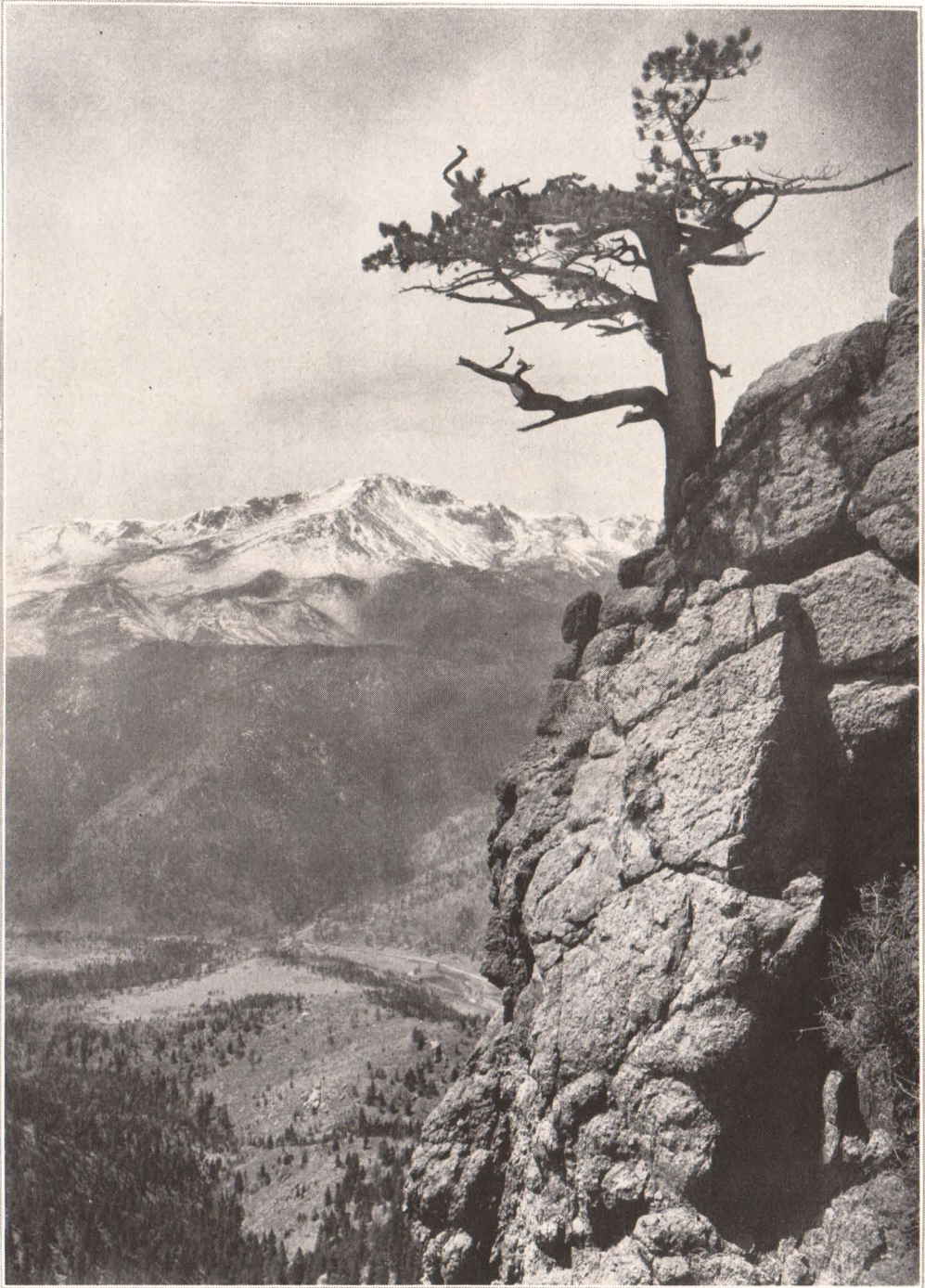
West of Rocky Mountain National Park is the Arapahoe National Forest, famous for fishing and fine scenery. Pike Forest, containing Mount Evans, Pikes, Grays and Torreys Peaks, lies west and south of Denver. San Isabel National Forest, southwest of Pueblo, shelters attractive camp sites among magnificent mountains.

Medicine Bow National Forest

Located in Wyoming, but its mountains a continuation of the Colorado ranges, Medicine Bow National Forest can easily be visited on a Colorado vacation. It lies about 9 miles west of Centennial, Wyoming. More than a score of beautiful lakes, abundantly stocked with trout, are hidden in the Snowy Range in Medicine Bow Forest. Brooklyn Lake, for instance, is reached by automobile from Laramie (on the Union Pacific) or by the L. N. P. & W. R. R., Laramie to Centennial, thence by automobile or horseback. About 40 miles west of Centennial are the medicinal springs of Saratoga, reached by rail from Walcott, Wyo. (on the Union Pacific main line). There is excellent fishing in the vicinity. There is also first-rate fishing at Encampment, a few miles south of Saratoga.

Medicine Bow National Forest may also be reached with ease from Ft. Collins or La Salle over one of Colorado's fine scenic highways.





This vista from Ute Pass discloses an unusually fine view of Pikes Peak. Colorado's most famous mountain, 14,109 feet above sea level, has both a railway and a motor highway to its summit



Grand Lake and the Village from Grand Lake Lodge

Colorado as a Side Trip

On through tickets from the East, Union Pacific offers the opportunity to visit Denver *at no extra cost for rail transportation*. Thus you may visit Denver on your way to Yellowstone, Zion, Grand Canyon, Bryce Canyon or other western National Parks, California, or the Pacific Northwest. A similar privilege is granted eastbound from certain sections of the West.

Let the nearest Union Pacific representative (list on page 47) make out your itinerary and aid you in the planning of your vacation. He has visited this great vacationland and can help you in dozens of ways because of his familiarity with the West. He will gladly send you descriptive booklets, and any specific information you may request regarding routes, fares, sleeping-car service, stop-over privileges and side trips. If you desire it he will call upon you at your place of business or home, and arrange for your tickets and reservations. There is no charge for this service. It is yours for the asking.





Columbines, Colorado State Flower, in Their Native Mountain Wilds

If You Take the Union Pacific You See More of the West

Because its rails and through service reach more of the West than those of any other railroad, the Union Pacific is your natural route to a Western vacation. Fifteen National Parks out of nineteen in the continental United States, are served by the Union Pacific.

Over the Union Pacific you can see Colorado first, including a trip to Rocky Mountain National Park, then go on to Yellowstone and Grand Teton National Parks, thence to Zion, Grand Canyon and Bryce Canyon—six National Parks on one tour!

Union Pacific service from Chicago and St. Louis on the east reaches the Pacific Coast at three points—Los Angeles, San Francisco, and the North Coast cities of Portland, Tacoma and Seattle. Interesting cities en route include Denver, Cheyenne, Salt Lake City and Boise. These regions, including the National Parks named above, and others in California and the Pacific Northwest, are described in the Union Pacific's library of illustrated booklets which are available for the asking.



Luxurious Interior of Dining Car on The Columbine

Excellent Trains

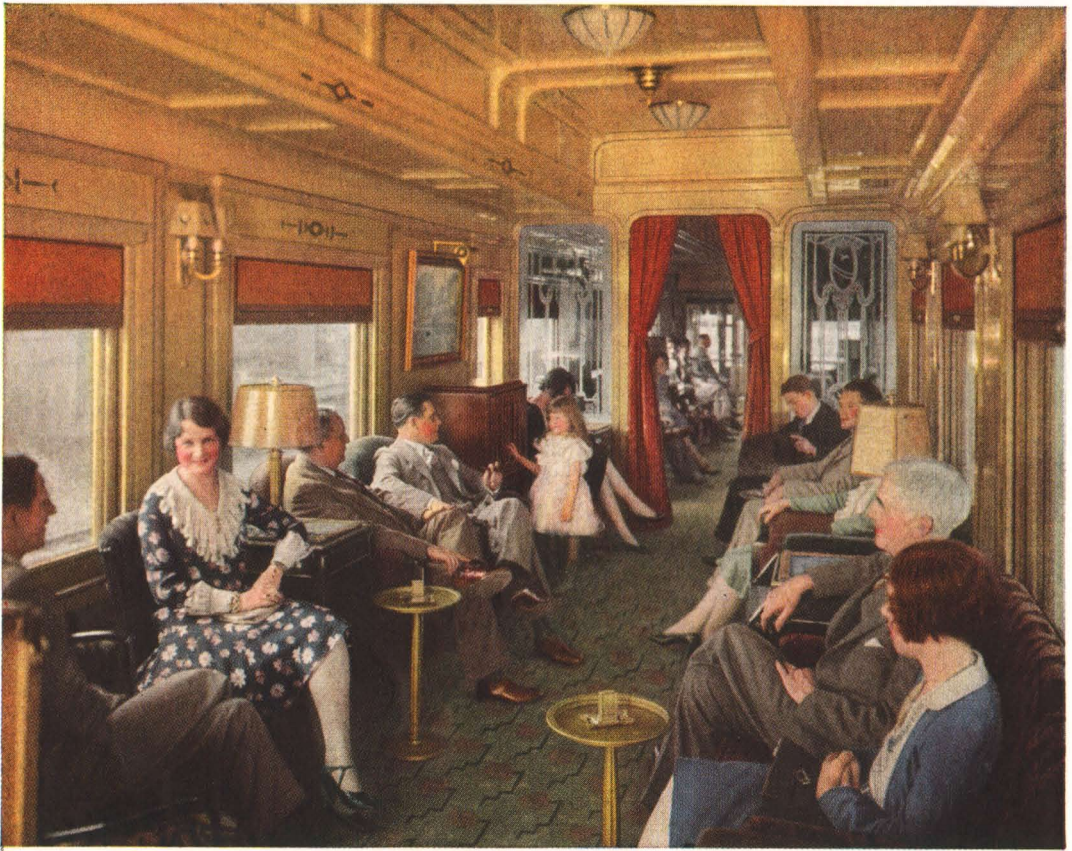
Ease and comfort, good meals and agreeable companionships are yours on any Union Pacific train. You may go to Denver from Chicago (via Omaha) or from St. Louis (via Kansas City) and be only one night en route.

From Chicago, The Columbine, "Flower of Travel Comfort," is the leader of the Colorado fleet and offers a convenient morning departure. This year, The Columbine has the newest and most modern equipment and the traveler who rides it to a Colorado vacation will find himself on one of the most beautiful and luxurious trains in America. Named in honor of Colorado's state flower, its interior decorations carry out the delicate beauty of that blue and white blossom found on the slopes of the Colorado Rockies.

Another fine train which is a favorite with many travelers is the Mountain Blue Bird, and completes the Chicago-Denver service.

From the St. Louis-Kansas City gateway are three more excellent trains—the Pacific Coast Limited, the St. Louis-Colorado Limited and the Denver Express.





Lounge Rooms of The Columbine, finest Union Pacific train to Colorado

Escorted All-Expense Tours

Unless it is carefully planned in advance, even a vacation trip may become a care. But it is perfectly possible to have an irresponsible jaunt this summer—no worry nor care. It can be done through Union Pacific-C. & N. W. Department of Tours. First, choose the escorted tour that appeals to you most; second, pay a moderate lump sum to cover all expenses, and let the vacation come along and whirl you away to scenes you want to visit.

A trained escort, courteous, well-informed, takes care of all arrangements and details for you, and you are free to sit back and enjoy every minute of your trip.

Department of Tours parties leave Chicago every week while the National Parks are open, beginning June 14. The schedules are such that each of the tours may be combined with any other.

For complete information and tour book apply to J. L. BURGAR, *Manager Department of Tours*, 148 South Clark Street, Chicago, Illinois, or ask any Union Pacific representative.



Hotels and Resorts in Colorado

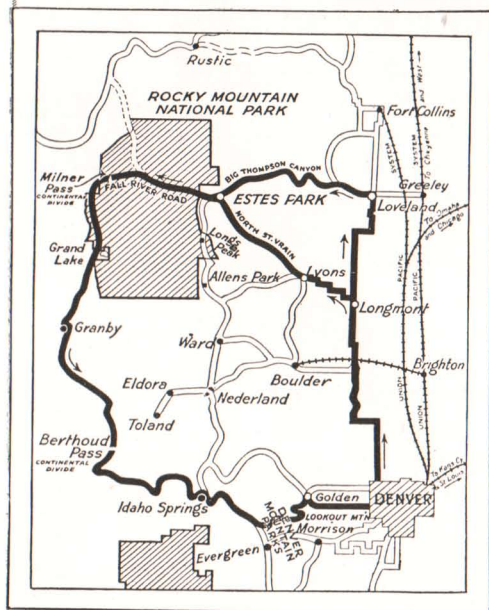
Rates Quoted Herein Are Subject to Change

The Union Pacific System in furnishing this list of hotel rates and other information, which is the latest obtainable, assumes no responsibility as to its correctness.

In Denver, the gateway to Colorado's Mountain Playgrounds, there are 252 hotels in the business district accommodating 50,000 people daily; also more than 700 boarding houses and private homes where good accommodations can be secured, giving a range of price and location to suit every purse and every taste. The Colorado Association at the Union Station will help you to find just what you desire and at the price you wish to pay if you will call there upon your arrival in Denver. The main office of the Colorado Association, 514 Sixteenth Street, will also give you this service.

There are hundreds of cottages and rustic cabins in the Colorado mountains, some in connection with hotels and some furnished for light housekeeping. These are in every part of the state, in the National Parks, along streams

stocked with fish, at the base and along the sides of canyons and peaks. The Colorado Association also endeavors to put visitors in touch with those in charge of these cottages and cabins, and lists of cottage owners will be sent upon request.



Inset map shows route of the motor bus circle tour from Denver through Rocky Mountain National and Denver Mountain Parks.

Hotels and Resorts in Colorado

DENVER	Min. Rate Per Day, European	Min. Rate Per Day, European	Min. Rate Per Day, European	Min. Rate Per Day, European			
Abbott.....	\$1.00	DeSoto.....	\$1.50	Law.....	\$1.00	Southard.....	\$1.00
Adams.....	1.50	DeWitt.....	1.50	Lewiston.....	1.00	Standish.....	1.50
Alamo.....	1.00	Dover.....	1.00	Marquette.....	1.50	St. Francis.....	1.50
Albany.....	1.00	Edelweiss.....	1.50	Midland.....	1.00	Toovey.....	1.00
Aloma.....	1.00	Eleventh Ave.....	1.00	Millard.....	1.00	Tours.....	1.00
Ambassador.....	1.50	Elk, New.....	1.50	Newhouse.....	1.50	Tremont.....	1.50
Argonaut.....	2.00	Erhard.....	1.50	Olin.....	2.50	Wellington.....	1.50
Auditorium.....	1.25	Euclid.....	1.00	O'Neill.....	1.50	West (new).....	1.25
Ayres.....	1.50	Grand Central.....	1.00	Oxford.....	1.50	West Court.....	1.50
Bellevue.....	1.00	Good.....	1.50	Page.....	1.00	West Vernon.....	1.00
Brown Palace.....	4.00	Hall.....	1.50	Palms.....	1.00	Whinton.....	1.00
Capitola.....	1.00	Harris.....	1.50	Park Lane.....	4.50	Wynne.....	1.50
Carlton.....	1.00	Harvey.....	1.00	Plaza.....	1.50		
Colburn.....	2.50	Holden.....	1.00	Plymouth.....	1.00		Min. American Plan
Colonial.....	1.00	Howard.....	1.00	Rainier.....	1.00	Ayres.....	\$3.00
Colorado.....	1.50	Huntington.....	1.00	Reo.....	1.00	Harvard.....	3.00
Columbia.....	1.00	Kenmark.....	1.50	Roslyn.....	1.00	Lancaster.....	3.50
Cosmopolitan.....	3.00	Kenmore.....	1.00	Sea.....	1.00	Olin.....	4.50
Court Place.....	1.00	La Bonta.....	1.00	Sears.....	1.50	Wellington.....	3.50
Crest.....	1.00	Lancaster.....	2.50	Shirley Savoy.....	2.00		

ESTES PARK—ROCKY MOUNTAIN NATIONAL PARK REGION
American Plan except where marked (E) European.

	Address	Per Week	Per Day		Address	Per Week	Per Day
Baldpate Inn	Estes Park, Colo.		\$6.00 up		Grand Lake Lodge		\$8.00
Bear Lake Lodge	Estes Park, Colo.		5.00 up		Hayden Bros. Cottages	On application	
Bond & Co., Inc., Cottages	Estes Park, Colo.	On application			Hewes-Kirkwood Inn	\$21.00 to \$40.00	
Brinwood Hotel	Estes Park, Colo.		8.00 up		Horseshoe Inn		7.50
Camp Chipeta for Girls	Estes Park, Colo.	\$325.00 season			Hupp Hotel		2.50 up
Camp Divide for Younger Boys					James, H. E., Cottages	On application	
. . . 511 Peoples Gas Bldg., Chicago, Ill.		300.00 season			Josephine Hotel (E)		3.50 up
Camp Eloise (for girls)	Estes Park, Colo.	300.00 season			Kauffman House	20.00 up	
Permanent address,					Lehmann's	18.00 up	
2214 Clermont St., Denver, Colo.					Lesters Hotel		3.50 up
Camp Haiyaha for Boys	Estes Park, Colo.	400.00 season			Lewiston, The		8.00 up
Camp Olympus	Estes Park, Colo.	On application			Longs Peak Inn		9.00 up
Camp Wheeler	Grand Lake, Colo.	On application			Marshall Cottages	15.00 to 45.00	
Cascade Lodge	Estes Park, Colo.		3.50 up		Moraine Lodge		5.50 up
Clatworthy Cottages	Estes Park, Colo.	On application			Mountainside Lodge		7.00 up
Columbines Lodge	Estes Park, Colo.		5.00 up		National Park Hotel		2.50 up
Copeland Lake Lodge	Allens Park, Colo.		4.00 up		Rapids Hotel		6.00 up
Corner Cupboard	Grand Lake, Colo.	\$12.50 up	1.75 up				
Crags Hotel	Estes Park, Colo.		7.50 up		Rocky Mt. Boys Camp		
Crystal Springs Hotel	Allens Park, Colo.	21.00	3.50 up		126 E. Chestnut St., Chicago, Ill.	400.00 season	
Deer Ridge Chalets	Estes Park, Colo.	22.50 to 30.00	3.50 up		Sherwood Hotel		1.50 up
DeMolay Camp, near Estes Park, Colo.					Spragues Ranch-Hotel		3.50 up
Elkhorn Lodge	Estes Park, Colo.		4.50 up		Stanley Hotel		9.00 up
Estes Park Chalets	Estes Park, Colo.		8.00		Stead's Ranch & Hotel		3.50 up
Fail River Lodge	Estes Park, Colo.		4.00 up		Timberline Cabin		5.00
Fern Lodge	Estes Park, Colo.		5.00 up		Woods, Chas., Cottages		
Ferncliff (Wills)	Lyons, Colo.	21.00 to 30.00			Wiswall Tavern		5.00 up
Forest Inn	Estes Park, Colo.	25.00	4.00 up		Y. M. C. A.	On application	

Distance from		
Denver		
COLORADO SPRINGS	75	Min. Rate Per Day
Acacia (A)		\$4.00
Acacia (E)		2.00
Alamo (E)		3.00
Albany (A)		1.50
Alta Vista (E)		2.00
Antlers (A)		4.00
Broadmoor (A)		9.00
Cheyenne (A)		1.50
New Elk		1.50
Joyce (A)		2.50
Harding-in-the-Canon (A)		Per week 27.50
Kenebec (A)		1.50
Rex (A)		1.50
Plaza (A)		1.50
Savoy		1.00

	Distance from Denver	Min. Rate Per Day
MANITOU.....	75	
Cliff House (A).....		\$5.00
Grand View (E).....		2.00
Navajo (A).....		1.50
Ruxton (A).....		1.00
Sunnyside (E) \$1.50.....	(A).....	3.00

Rates shown are the lowest. (A) American plan. (E) European plan
Distance from Denver Per Day Per

Rates shown are the lowest.		(A) American plan.	(E) European plan.		
	Distance from Denver		Per Day	Per Week	Per Month
ALAMOSA.....	252	Victoria (E).....	\$1.50		
		San Louis (E).....	1.50		
		Eagle (A).....	2.00	\$10.50	
		Redman (A).....	2.00		
		St. Charles.....	1.00	4.50	
ALMONT.....	299	Sportmen's Paradise (A) (J. W. Britts)		(Rates on application)	
ANTONITO.....	280	Du Bor (E).....	1.50	10.50	
		Valley (E).....	1.00	5.00	
		Palace (A).....	3.50	18.00	
		Conejos Rainbow Trout Lodges.....		25.00	
ASPEN.....	401	Jerome (A).....	4.00	17.50	\$60.00
		Chitwood (H. K. Rooms) (A).....	2.50		
		Collins (Rooms).....	.75		
		Kate's Ranch (26 miles from Aspen)...		10.00	
		McKees (Cottages).....	2.00		
AUSTIN.....	350	Austin (A).....	2.00		
AVON.....		McDowell Boarding House.....	2.00	10.00	40.00

Hotels and Resorts in Colorado

Rates shown are the lowest. (A) American plan. (E) European plan.

	Distance from Denver		Per Day	Per Week	Per Month
BAILEY	55	Fairview Ranch (A)	\$3.00		
		Rest-a-Bit Lodge (A)	3.50		
		Kiowa Lodge (A)	5.00	\$35.00	
		Morrow Hotel (A)	3.00	20.00	
		Mt. Vernon Hotel (A)	3.00		\$ 62.00
		Idle Hour Ranch (A)	3.00		
		Glenisle (A)	5.00	25.00	
BENDEMEER (P. O. Evergreen)	34	Bendemeer Lodge Cafeteria-Cottages (E)	2.50	15.00	
BEULAH		Beulah (A)	2.50-3.00		
BLANCA		Southern Hotel (E)	1.00		
BOULDER	29	Boulderado Hotel (E)	1.25		
		Metropolitan (E)	.50	7.00	
		Monticello (E)	2.50		
		Colorado Chautauqua Assn. (E)		10.00	
		Colorado Sanitarium		25.00	
BOULDER CANON	33	The Alps (A)	3.50	28.00	125.00
	41	Eckels (A)	3.50	20.00	
BROOK FOREST	33	Brook Forest Inn (A)	10.00	50.00	
BUENA VISTA	175	Princeton (E)	1.50		
		Hot Springs	3.75		
		Wilburs (A)	3.00		
BUFFALO CREEK	40	Blue Jay Inn (A) (Women's)	1.75	12.00	
		Buena Vista (A)		16.00 up	
CANON CITY	160	Graham's Ranch (24 miles)	1.50		
		Strathmore Hotel (E)	1.00		
		Grand Hotel (E)	2.00		
		Linden (E)	1.50		
		McClure House (E)	.75		
		Canon Hotel (E)	1.50		
		Royal Gorge	1.50		
		(7 miles from Canon City at top of Gorge)			
		Vista Lodge	1.00	18.00	
CANON PARK	30	Switzerland-Cafeteria Plan			
CARBONDALE	373	Mountain View (A)	2.50	17.00	45.00
CASCADE	85	Easthome Hotel (A)	3.00	17.50	70.00
CASSELLS	57	Cassell's Hotel (A)	5.00	30.00-35.00	
		Lake View Lodge (Weller)		16.00	
CASTLE ROCK	33	Keystone	1.00-1.50	8.00-9.00	32.00-35.00
		Clarks Hotel			
		City Hotel (A)	3.00		
CEBOLLA	307	Carpenters Fishing Resort (A)	3.50	21.00	
CHEROKEE PARK (St. Cloud)	100	Campton's (A)	3.00	17.00	
CIMARRON	329	Hill Side Inn (E)	1.50	9.00	
		Cimarron Hotel (A)	2.50	15.00	
CLIFFDALE	46	Cliff Hotel (E)	2.00	15.00	55.00
CLIFTON	443	Clifton Hotel (E)	2.00		
CONCRETE	114	Concrete Hotel (E)	2.00		
CRAIG	232	Webb Hotel	2.00		
		Baker House (E)	1.00		
		Continental Hotel	1.00		
		Craig (E)	1.00		
CREEDE	321	Antlers Park (A)	2.50		
		Rio Grande (A)	3.00		
		Antelope Park Ranch (A)	2.50	14.00	
		Wright's Ranch	2.80		
		Zangs (E)	2.50		
		Haslett (E)	1.00		
		Texas Club (A)	3.00		
CRESCENT	32	Carter Lake Cabins		7.00	
		The Crescent	4.00	20.00	
CRESTED BUTTE	316	Elk Mountain Hotel (E)			
CRIPPLE CREEK	125	Imperial Hotel (E)	1.00		
DEBEQUE	416	Moore's Hotel (E)	2.00		
		Haley (E)	1.00	Spl.	Spl.
DECKERS SPRINGS	44	Decker's Hotel (E)	1.50		
DEL NORTE	283	Spanish Trail Inn (E)	1.50		
DELTA	372	Cedar Edge (A) (Harry Beckman)			
		Commercial (E)	1.00		
		Alexander Lake Hotel (A) at Grand Mesa			
		Lakes, 25 miles from Delta	3.00	15.00	60.00
		Delta House (E)	1.50		
		Singleton Boarding House (A)	1.00		
		Eldina Hotel (E)	1.00		
		Grand Mesa Resort Hotel and Cabins	2.00		
DOLOROS	480	Dolores (E)	1.00	Cabin 6.00	25.00
		" (A)	2.50	17.50	50.00
DOYLE	270	Waunita Hot Springs (A)	3.50		
DURANGO	428	Southern... (A) 1.50... (E)	1.00		
		Strater (A)	3.50		
		Savoy (A)	1.50		
		Palace (A)	3.00		
EAGLE	329	Montgomery (A)	1.00	5.00	
ELDORA (Eldora Lake)	72	Pine Log Inn (A)	1.25	8.00	
		Lily Hotel (also cottages \$12.50 week up)	2.50		
		Scenic Hotel (A)	1.25		
ELDORADO SPRINGS	27	New Eldorado (E)	1.00	7.00	
		Grand View Annex (A)	3.00		
ELKDALE	71	Elkdale Lodge (A)	3.00	18.00	
ELK CREEK	305	Elk Creek Resort	3.00	18.00	
EMPIRE	45	Empire Hotel (A)	2.00		
		Peck House (A)	2.00		
		Glen Arbor (E)	1.50	17.50	
EVERGREEN	15	Troutdale-In-The-Pines (E)	6.00		
FAIRPLAY	90	Fairplay Hotel (A)	3.00		
		Windsor Hotel (A)	3.50 up		
		Davis Brothers (12 miles) (A)	2.50		

Hotels and Resorts in Colorado

Rates shown are the lowest. (A) American plan. (E) European plan.

	Distance from Denver		Per Day	Per Week	Per Month
FLORENCE	152	Lennox (A)	\$2.50		
		Florence Hotel (A)	3.00		
		Rock Island (E)	.75		
		Elk's Home (E)	1.25		
FORT COLLINS	74	Northern Hotel (E)	1.50	\$10.00	
		Armstrong Hotel (E)	1.50	9.00	
		Forks Hotel (A) (P. O. Drake)		15.00-18.00	
		Linden Hotel (E)	1.00		
		New Antlers (E)	1.00		
FORT LOGAN	9	Mountain View Hotel (E)	1.50	4.00	15.00
		Star Hotel (A)	2.75		
FOUNTAIN	88	New Brunswick (E)	1.25		
		Rooming House (E)	1.50		
FRASER	62	Tourist Hotel	3.00	15.00	
		Thomas Hotel (A)	1.50		
		Spruce Lodge (A)	3.00		
		Gaskill's Place	3.00		
		Fraser Hotel	3.00		
		Cabin Creek Lodge	3.00		
FRUITA	460	Arapahoe Lodge (A)	3.00		
		Whitehouse (E)	1.50		
		Fruita (E)	1.00		
		Park (A)	1.50		
GEORGETOWN	50	Alpine Lodge (A)	3.75	21.00	
		Hotel De Paris (E)	1.50		
		St. James (E)	1.25		
		Barton (E)	1.25		
		Q. D. Club (Club for Girls)	1.00		
GLEN ECHO (P. O. Log Cabin)	42	Glen Echo (A)		20.00-35.00	
GLEN PARK (P. O. Palmer Lake)	53	Verano Lodge (E)	1.00		
GLENWOOD SPRINGS	225	Hotel Colorado (A)	7.00		
		Hotel Glenwood (E)	1.00		
		Williams (E)	1.50		
		Star (E)	1.00		
		Grand (E)	1.00		
		Denver (E)	1.50		
		Palace (E)	.75		
		Kendrick Cottage Hotel (E)	1.00		
		Mains Cottages	.50 up	4.00-8.00	
GOLDEN	13	Avenue Hotel (E and A)	2.50	8.00	34.00
		Baltimore Hotel (A)	2.00		
		Golden House (E)	2.50		
GRANBY	110	McDonald's House (A)	2.50	15.00	
		Blue Bird Lodge (A)	2.75		
		Nuckoll's Cabins	1.00		
	110	The Ka Rosa (A)	4.00		
	113	Murray's Camp	4.00	22.50	
		McQueary's Ranch	3.00		
		Lehman's Ranch		18.00	
GRAND JUNCTION	337	La Court (E)	1.50		
		St. Regis (E)	1.50		
GRAND VALLEY	404	Country Club Hotel (E)	2.50		
		Grand Valley (E)	1.50	10.00	35.00
GRANITE	257	Granite House (E)	1.00	7.00	30.00
GRANT	66	Geneva Lodge (A)	3.25		
GREELEY	55	Albion (E)	1.00		
		Camfield (E)	1.50		
		Sterling (E)	1.25		
GREEN MT. FALLS	90	Terrace Hotel (A)	3.50	20.00	
(15 miles from Colorado Springs)		Green Mt. Lodge (A)	3.00	15.00	
		Columbine Hotel (A)	3.00	18.00-20.00	
GROUSEMONT (P. O. Baileys)	58	Grousemont Hotel (A)	4.00	25.00	
GUNNISON	289	La Veta Hotel (E) \$1.50 (A)	3.50	18.00	
		Grand Hotel (E)	2.25		
		Jointed Rod Resort Camp (A)	3.00	17.50	
		Rainbow Rooms		(Rates on application)	
GYPSUM	336	Travelers (A)	2.00	10.00	
		Gypsum (A)	2.50		
		Green's Rustic Hotel (E)	2.00		
		(Sweetwater Lake)			
HAYDEN	215	Hayden Inn (A)			
		Oxford Hotel (A)	3.50		
HESPER	523	Hesper (E)	1.00		
HOME	112	Keystone Hotel (Zimmerman's) (A)	3.50	18.00	
(42 miles from Fort Collins up Poudre Canon)					
HOT SULPHUR SPRINGS	86	Grand Hotel (E)	3.00	18.00	
		Middle Park Hotel (E)	1.00	6.00	
		Riverside Hotel (E)	2.00		
HOWARD (4 miles)	203	Twin Mountain Ranch (E)	1.75	11.00	
Royal Gorge		(Also cabins for light housekeeping including fuel and saddle horses)			
IDAHO SPRINGS	39	Cunningham (A)	3.00		
		Hot Springs Hotel (A)	3.50	21.00	
		Annex Hotel	2.00		
		Idaho Hotel (A)	4.00		
		King (A)	3.00		
		Queen (A)	3.00		
		Cliff House (E)	1.00		
IDYLEASERANCH (P.O. Foxton)	34	Idylease Ranch (A)	4.00	18.00	
IGNACIO	426	Commercial (A)	2.00	12.50	50.00
		Ignacio (E)	2.00		
		Central (E)	2.00		
		Elks (E)	2.00		
IOLA	299	Iola Hotel and Ranch Company	2.50	15.00	
		Hewitt's (E)	2.00		
		Richard's (E)	2.00		

Hotels and Resorts in Colorado

Rates shown are the lowest. (A) American plan. (E) European plan.

	Distance from Denver		Per Day	Per Week	Per Month
JAMESTOWN (14 miles from Boulder)		Martin Hotel			
JAROSO	264	Jaroso (A)	\$2.50	\$15.00	\$50.00
KA ROSA	110	The Ka Rosa (A) (also cottages \$15 w'k up)	4.00		
KEZAR	300	Ehret's Resort	2.00		
LAKE CITY	350	Lake Shore Inn (A)	3.50		
		Occidental Hotel (E)	2.00		
		Pueblo House (E)	1.00	15.00	
		Villa Grove Ranch (A)	2.75		
		W. O. Baker Ranch (A)	2.75		
LAKE ELDORA (Eldora)	63	Pine Log Inn (A)	3.50	18.00	
		Lily Hotel (also cottages \$12.50 week up)	1.00-1.50		
		Scenic Hotel (A)	1.25		
LA PORTE (15 miles from Fort Collins)	89	Camp Pitts (A)	3.00		
LEADVILLE	175	La Porte (E)	1.00		20.00
		Stanley's Cabins			
		Vendome (E)	1.00	2.00	
		Delaware House (E)	1.00	4.00	
		Quincy (E)	1.00		
LIVERMORE (25 miles from Fort Collins)	99	Livermore Hotel (A)		12.00-14.00	
LOG CABIN	112	Log Cabin Hotel (A)	2.50		
LONGMONT	34	Imperial (E)	1.50		
LOVELAND	52	New Lovelander (E)	1.50		
		Bechtel (E)	1.00		
		Colorado (E)	.50		
LYONS	48	Vella Vista (A) (3 miles)	4.00	24.00	
	54	Welch's Resort (A)	4.00	25.00	
	50	Burlington (A)	3.00	15.00	
MACK	400	Unita (A)	3.75	24.00	
MANCOS	463	Mancos Hotel (A)	2.50	18.00	
		Spruce Tree Camp (A)			
		Wrightsmen Hotel (A)	3.50	18.00	
MARVINE	450	Marvine Lodge (A)	3.75		
		Fitzgerald's Ranch (A)	5.00		
McCOY	157	McCoy's Hotel (A)	2.50	14.00	
MEEKER	305	Meeker Hotel (E)	1.50		
		Miller House (E)	2.00		
		Home Hotel (E)	.75		
		Davitt House (E)	1.50		
		Farmers Home (E)	1.50		
		Lamglos Ranch (A)	2.50-3.00		
		Patison Ranch (A)	2.00-3.00		
		Elk's Lodge (A)	2.50		
MINERAL HOT SPRINGS	250	Mineral Hot Springs Resort (A)		(Rates on application)	
		(Including Baths)			
MINTURN	302	D. & R. G. Y. M. C. A. (A)	1.00		
		Eagle River (A)	3.00	20.00	45.00
MOFFAT	263	Logan (E)	1.00		
		Moffat (E)	1.00		
MONTE VISTA	269	La Veta Hotel (E)	1.25		
		El Monte (E)	1.25		
MONTROSE	351	Meritz (E)	1.00		
		Central (E)	1.50		
		Belvidere Hotel (A)	1.25		
		Palmer House (E)	1.25		
		Smith's Central (E)	1.50		
		Thomas Hotel (E)	2.00		
		Hurst (E)	2.00		
		National (E)	1.00		
		Vendome (E)	1.00		
		Harlan Court (E)	1.00		
MOSCA	287	Mosca (E)	1.00		
MORRISON	17	Mount Morrison Hotel (A)		21.00-24.00	
		Westmoreland Hotel (A)		(Single) 26.00	
NEDERLAND	67	Hetzer Hotel (A)	2.00	20.00-25.00	
		Arapahoe Lodge (E)	5.00	28.00	
		Longcrest (A)	4.00	21.00	
NEWAKA CAMP FOR GIRLS (P. O. Ward)				(Rates on application)	
OURAY	387	St. Elmo (E)	1.00		
		Wilson Rooms (E)	1.50		
PAGOSA SPRINGS	421	Metropolitan (E)	1.00	10.00	
		Springs Hotel (E)	2.00		
PALISADE	437	Midland (E)	1.50		
		McCoy Boarding House (A)	2.50		
PALMER LAKE	52	Pine Crest Inn (E)	1.50		
		Gray's Hotel	1.50		
PAONIA	405	Glen Park—Verano Lodge (E)		7.00-10.00	
		Paonia Hotel (E)	1.00	7.00	30.00
		Bross Hotel (A)	2.50	16.00	64.00
		Davis Rooming House (A)	2.00	12.00	45.00
PARSHALL	91	Buckhorn Lodge (A)	10.00	68.00	
		Parshall Hotel (E)	1.75		
		Ute Park Resort			
		Dolloff's Resort (A)	3.00	18.00	
		(Also furnished cabins \$1.00 per day)			
PEACEFUL VALLEY	67	Peaceful Valley (A)	2.50		
PINE GROVE	43	Prosser Hotel (A)	2.50	12.00	45.00
		Glenelk Cottages (meals) (A)	2.00	15.00-30.00	
PITKIN	292	Mason Hotel (A)	2.00		
PONCHA HOT SPRINGS	220	Poncha Hot Springs Hotel (A)	3.00	17.50	70.00
PORTLAND	146	Portland (E) Meals \$1.00 per day	1.00	2.50	10.00
		Hetzer Hotel and Cottages		12.50-15.00	45.00-50.00
		Langerest (A)	4.00	17.50	
		Western (A)	2.00	20.00-25.00	
		Antlers (A)	2.00	20.00-25.00	

Hotels and Resorts in Colorado

Rates shown are the lowest. (A) American plan. (E) European plan.

	Distance from Denver		Per Day	Per Week	Per month
PUEBLO.....	119	Congress Hotel (E).....	1.75		
		Clark's Mineral Springs Hotel (A).....	3.50		
		Vail (E).....	2.00		
		Maine Hotel (E).....	1.50		
		La Salle Hotel (E).....	1.00		
		Midland (E).....	1.00		
		Whitman Hotel (E).....	2.00		
RED CLIFF.....	225	Commercial Hotel (A).....	3.25		\$50.00
		Quartzite (A).....	2.25		40.00
RICO.....	502	Rainbow's End (Ranch).....		\$30.00-35.00	
		Koenig Hotel and Rhode Hotel (A).....	2.50		
RIDGWAY.....	377	Park (A).....	2.00-2.50	12.00	50.00
		Herrick House (A).....	2.50	12.00	40.00
RIFLE.....	386	Midland Hotel (E).....	1.00	6.00	
		Winchester (E).....	1.00		
		Trappers Lake Resort (A).....	5.00		
ROMEO.....	273	Colonial (A).....	2.50	15.00	
RYE.....	154	Pine Glen (A).....	2.00	12.00	45.00
		Idawilde (E).....	2.00	12.00	
SALIDA.....	215	Monte Christie (E).....	1.00		
		Palace (E).....	1.25		
		Traveler's (E).....	.50		
		Snyder's Hotel (E).....	1.25		
		New Sherman (E).....	1.50		
		Rainbow (E).....	1.50	7.00	25.00
		Salida (E).....	1.00		
		Willsville Hot Springs (A).....	2.50		
		Poncha Hot Springs (A).....	3.00	17.50	70.00
SAN ACACIA.....	248	Reaubien (A).....	3.50		
SAPINERO.....	314	Rainbow (E).....	1.00		
		Metropolitan (E).....	1.50		
SARGENT.....	257	Rising Hotel (E).....	2.00	8.00	
		Turner (A).....	2.00		60.00
SHAWNEE.....	60	Grand View Hotel (A).....	3.00	18.00	
SILVER SPRUCE RANCH.....	50	Silver Spruce Ranch (A).....	3.00	14.00-20.00	
(P. O. Estabrook)					
SILVERTON.....	496	Imperial Hotel (E).....	.75	7.50	
		Alma Rooming House (E).....	.50		
SOUTH FORK.....	298	Mountain View Ranch (A).....	3.00		
SOUTH PLATTE.....	29	Wallbrecht's Hotel (A).....	3.00	17.50	70.00
		Trumbull Inn (A).....	2.50	15.00	
STAPP'S LAKE (P. O. Ward).....	56	Stapp's Hotel (A).....	5.00	30.00	100.00
STATE BRIDGE.....	149	State Bridge Hotel.....	2.50	14.00 up	
STEAMBOAT SPRINGS.....	191	Steamboat Cabin (E).....	1.00	4.00	
		Sheridan (A).....	2.25	10.00	
		Stuckey House (E).....	.50		
		Central House (E).....	1.50	10.00	
		Progressive (E).....	1.00		
		Glen Eden (19 miles from Steamboat).....	2.50	15.00	
TAVERNASH.....	89	Vulgamott's.....		18.00 up	
		Cozy Nook Ranch.....			
		Tabart Inn.....	3.00	18.00	
TELLURIDE.....	422	New Sheridan (E).....	1.75		
		Victoria Hotel (E).....	2.50		
		Alpine (E).....	1.00		
		Columbine Rooms (E).....	.50		
TOLLAND.....	47	Ohio House (E).....	1.50		
		Tolland (A).....	3.00		
TRIMBLE HOT SPRINGS.....	460	Trimble Hot Springs Hotel (A).....	2.00	20.00	
TRINIDAD.....	210	Cardenas (E).....	2.00		
		Columbia (E).....	1.50		
		Coronado (E).....	1.50		
		Bellevue (E).....	1.50		
		Commercial (E).....	1.25		
		St. Elmo (E).....	1.50		
		Toltec (E).....	1.50		
		Trinidad (E).....	.75		
		Grand (E).....	1.00	6.00	20.00
TROUBLESOME (P. O. Pearmont).....	121	Weaver's Ranch.....			
TROUTDALE (P. O. Evergreen).....	29	Troutdale-in-the-Pines (A).....	9.00		
TWIN LAKES.....	266	Cottage Hotel (A).....	3.00		
		Twin Peaks Hotel.....	3.00		
		Holt's Hotel (A).....	2.50		
VASQUEZ.....	81	Evans.....			
WAGON WHEEL GAP.....	312	Hot Springs Hotel (A).....	12.00		
WALSENBURG.....	175	Klein (E).....	2.00		
		Freeman House (E).....	1.25		
		Gilligan House (E).....	1.00		
		Oxford (E).....	.75	4.00-5.00	16.00-20.00
		St. Charles (E).....	1.00		
WARD.....	46	Lodge of Pines (A).....	9.00		
		Audubon Lake and Lodge (A).....	4.00	25.00	
WELLER, (P. O. Cassells).....	64	Lake View Lodge (A).....		14.00	
WELLINGTON LAKE.....	50	Wellington Hotel (A).....	2.50	20.00	
(P. O. Buffalo)					
WESTCLIFF.....	209	Scheible Hotel (E).....	3.00	14.00	
		The Pines (A).....	3.50	20.00	
WOLCOTT.....	319	State Bridge Hotel.....	2.50	14.00	
WOODS LAKE (P. O. Troutville).....	422	Woods Lake (A).....	5.00	32.00	
YAMPA (P. O. Marvine).....	185	Fitzgerald's Ranch (A).....	5.00		
		Forest Inn (A).....	3.50		

Union Pacific Representatives

Aberdeen, Wash.	3-4 Union Passenger Station, K and River Sts.	W. E. M. SCHLOEMAN, Dist. Freight and Passenger Agt.
Astoria, Ore.	489 Commercial Street.	G. W. ROBERTS, Traveling Freight and Passenger Agent
Atlanta, Ga.	1232 Healey Building.	W. C. ELGIN, General Agent
Bend, Ore.		H. D. ATHON, Traveling Freight and Passenger Agent
Birmingham, Ala.	301 Protective Life Building, First Avenue and 21st Street.	J. H. DOUGHTY, General Agent
Boise, Idaho.	City Ticket Office, 823 Idaho Street.	JOEL L. PRIEST, General Agent
Boston, Mass.	207-8 Old South Building, 294 Washington Street.	WILLARD MASSEY, General Agent
Butte, Mont.	229 Rialto Building, 4 South Main Street.	HENRY COULAM, General Agent
Cheyenne, Wyo.	Union Pacific Station.	N. A. MILLER, Ticket Agent
Chicago, Ill.	City Ticket Office, Otis Building, 6 South La Salle St.	G. R. LEMMER, General Agent, Passenger Dept.
Cincinnati, Ohio.	705 Dixie Terminal Building, Fourth and Walnut Streets.	W. H. CONNOR, General Agent
Cleveland, Ohio.	941 Union Trust Building, 925 Euclid Avenue.	J. STANLEY ORR, District Passenger Agent
Council Bluffs, Iowa.	City Ticket Office, Chieftain Hotel, 36 Pearl Street.	W. H. BENHAM, General Agent
Dallas, Texas.	909 Magnolia Building, Commerce and Akard Streets.	H. B. ELLER, City Ticket Agent
Denver, Colo.	City Ticket Office, 601 Seventeenth Street.	E. G. KOENEMAN, General Agent
Des Moines, Iowa.	City Ticket Office, 601 Seventeenth Street.	K. N. MIDDLEKAUFF, Assistant General Passenger Agent
Des Moines, Iowa.	407 Equitable Building, Sixth and Locust Streets.	F. P. STAFFORD, General Agent
Detroit, Mich.	508 Transportation Building, 131 Lafayette Boulevard, West.	A. R. MALCOLM, General Agent
East Los Angeles, Calif.	5454 Ferguson Drive.	T. L. VOGEL, Ticket Agent
Eugene, Ore.		E. S. FARRELL, Traveling Freight and Passenger Agent
Fort Collins, Colo.	Union Pacific Station.	L. B. WHITEHEAD, Passenger and Ticket Agent
Fresno, Calif.	207-8 Rowell Building, Tulare Street and Van Ness Avenue.	T. F. BROSNAHAN, General Agent
Glendale, Calif.	129 South Brand Boulevard.	C. A. REDMOND, General Agent
Hollywood, Calif.	City Ticket Office, Christie Hotel, 6732 Hollywood Blvd.	H. W. HICKS, General Agent, Pass'r Dept.
Kansas City, Mo.	City Ticket Office, 805 Walnut Street.	SETH C. RHODES, General Agent, Passenger Dept.
Lewiston, Idaho.	224 Breker Building.	H. J. BERGER, Traveling Freight and Passenger Agent
Lincoln, Nebr.	City Ticket Office, 1308 N Street, Federal Trust Building.	A. D. GRANT, General Agent
Long Beach, Calif.	Wise Building, 220 Pine Avenue.	R. W. SMOCK, General Agent
Los Angeles, Calif.	City Ticket Offices, 732 South Broadway and 451 South Main Street	J. CRUICKSHANK, General Agent, Passenger Department
Milwaukee, Wis.	703 Straus Building, 238 West Wisconsin Avenue.	A. T. JACKSON, District Passenger Agent
Minneapolis, Minn.	845 Northwestern Bank Building, 620 Marquette Avenue.	K. T. MINDEMANN, General Agent
New Orleans, La.	1001 New Orleans Bank Building, 226 Carondelet Street.	E. H. HAWLEY, General Agent
New York, N. Y.	205 Farmers Loan and Trust Co. Building, 475 Fifth Ave.	G. J. GARMON, General Agent
Oakland, Calif.	215 Central Bank Building, 436 Fourteenth Street.	H. A. LAWRENCE, Gen. Agt., Pass. Dept.
Ogden, Utah.	214 David Eccles Building, 390 Twenty-Fourth Street.	JAMES WARRACK, General Agent
Omaha, Neb.	City Ticket Office, 1523 Farnam Street.	C. L. McKNIGHT, General Agent
Pasadena, Calif.	222 East Colorado Street.	L. BEINDORFF, General Agent, Passenger Department
Philadelphia, Pa.	508 Commercial Trust Building, 15th and Market Streets.	C. F. FARMER, General Agent
Pittsburgh, Pa.	216 Oliver Building, Smithfield Street and Sixth Avenue.	H. L. LAUBY, General Agent
Pomona, Calif.	Union Pacific System Passenger Station.	JOHN D. CARTER, General Agent
Portland, Ore.	City Ticket Office, 341 Washington Street.	EDWARD EMERY, District Passenger Agent
Redlands, Calif.	14 Cajon Street.	ARTHUR C. SMITH, Passenger and Freight Traffic Agent
Reno, Nev.	200 Lyon Building, Second and Center Streets.	BURTON BECK, General Agent, Passenger Department
Riverside, Calif.	Glenwood Mission Inn, 680 Main Street.	L. C. FOWLER, Passenger and Freight Traffic Agent
Sacramento, Calif.	217 Forum Building, 1107 Ninth Street.	E. E. LARKIN, General Agent
St. Joseph, Mo.	City Ticket Office, 517 Francis St.	R. E. DRUMMY, General Agent
St. Louis, Mo.	203 Carleton Building, 308 North Sixth Street.	C. T. SLAUSON, General Agent
Salt Lake City, Utah.	City Ticket Office, Hotel Utah, Main and South Temple Sts.	St. J. and G. I. Ry. Co.
San Diego, Calif.	345 Plaza Street.	J. L. CARNEY, General Agent
San Francisco, Calif.	City Ticket Office, 673 Market Street.	E. A. SHEWE, District Passenger Agent
San Jose, Calif.	501 First National Bank Building, Santa Clara and First Streets.	C. C. JEWETT, General Agent
San Pedro, Calif.	101 West Seventh Street.	H. A. BUCK, General Agent, Passenger Department
Santa Ana, Calif.	305 North Main Street.	R. M. RITCHEY, General Agent
Santa Monica, Calif.	602 Santa Monica Boulevard.	W. F. NASH, Jr., General Agent
Seattle, Wash.	204 Union Station, 4th Ave. and Jackson St.	W. A. SHOOK, General Agent
Spokane, Wash.	727 Sprague Avenue.	S. C. FROST, General Agent
Tacoma, Wash.	114 South Ninth Street.	W. H. OLIN, Asst. General Freight and Passenger Agent
Toronto, Ontario.	201 Canadian Pacific Building, 69 Yonge Street.	City Ticket Office, 1403 Fourth Avenue.
Tulsa, Okla.	320 Kennedy Bldg., 319 South Boston Street.	A. L. IVES, General Agent, Passenger Department
Wallis Walla, Wash.	Baker Building, Main and Second Streets.	T. J. DOWD, District Freight and Passenger Agent
West Los Angeles, Calif.	1613 Sawtelle Boulevard.	G. L. LEONARD, District Freight and Passenger Agent
Whittier, Calif.	Union Pacific System Passenger Station.	GEO. W. VAUX, General Agent
Yakima, Wash.	Union Pacific Bldg., 104 West Yakima Avenue.	F. F. ROBINSON, General Agent

DEPARTMENT OF TOURS (Union Pacific System—C. & N. W. Ry.)

J. L. BURGAR, Manager
148 S. Clark St., Chicago, Ill.

J. P. CUMMINS
General Passenger Agent
OMAHA, NEB.

D. S. SPENCER
General Passenger Agent
SALT LAKE CITY, UTAH

W. K. GUNDIFF
General Passenger Agent
PORTLAND, ORE.

GEO. R. BIERMAN
General Passenger Agent
LOS ANGELES, CALIF.

JOHN L. AMOS
Assistant Traffic Manager
Union Pacific Bldg.
SALT LAKE CITY, UTAH

A. S. EDMONDS
Assistant Traffic Manager
Pittcock Block
PORTLAND, ORE.

R. B. ROBERTSON
Assistant Traffic Manager
Pacific Electric Bldg.
LOS ANGELES, CALIF.

A. V. KIPP
Assistant Traffic Manager
415 Monadnock Bldg., 681 Market St.
SAN FRANCISCO, CALIF.

W. S. BASINGER
Passenger Traffic Manager
OMAHA, NEB.

C. J. COLLINS
Asst. Passenger Traffic Manager
OMAHA, NEB.

