

CALIFORNIA



UNION PACIFIC RAILROAD



(Front Cover) Laguna Beach typifies California's Riviera-like coast



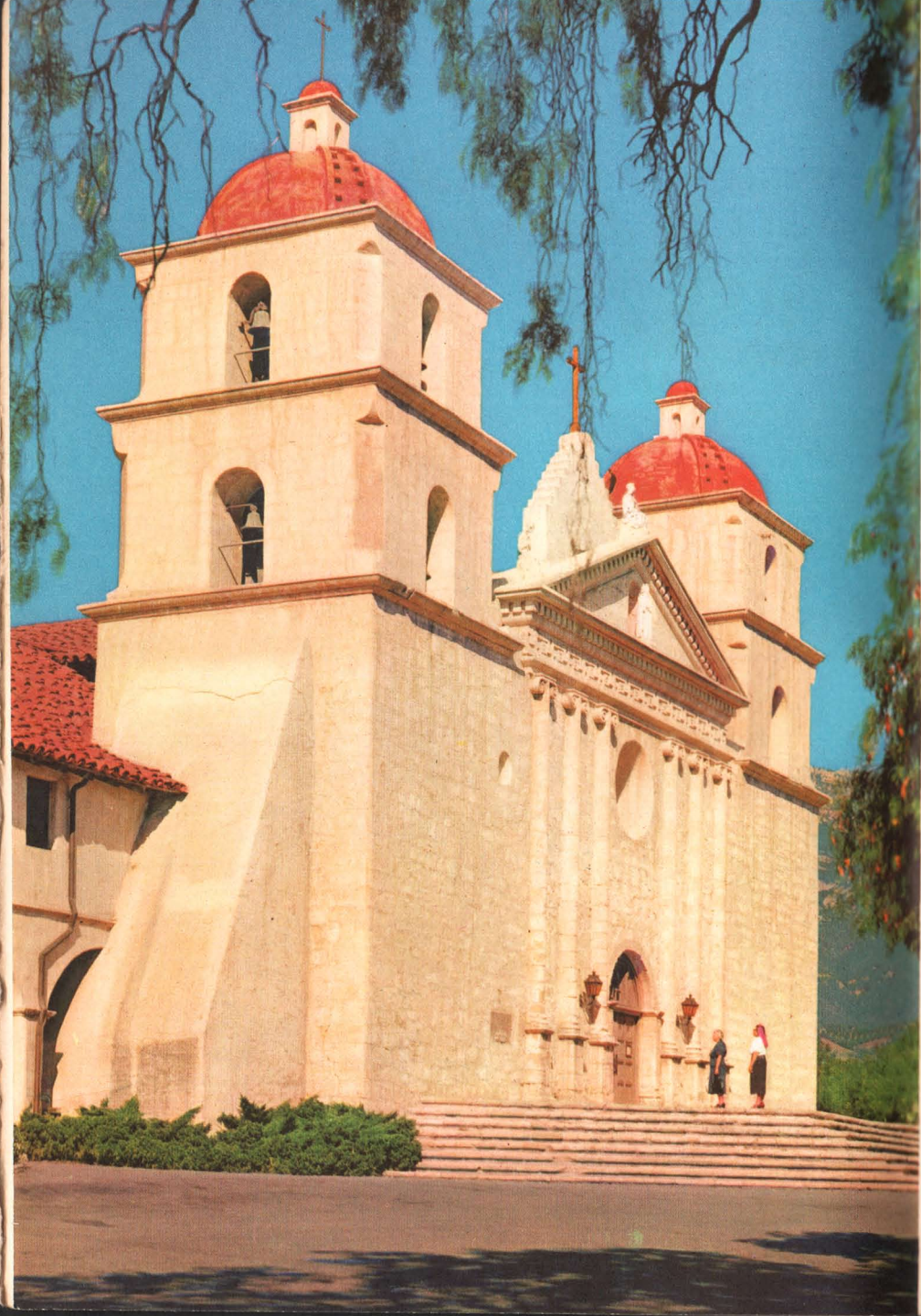
Romantic Land of Many Lands

Of all the states of the Union, no other name fires the imagination or quickens the pulse like mention of the name "California." From the time of the first explorers, who came by sea in tiny galleons seeking "El Dorado," down to the present-day sophisticated traveler who arrives aboard one of Union Pacific's fine trains, California has always held the promise of a better "way of life."

Second largest state, California embraces within its boundaries four national parks and an infinite variety of scenic attractions and climatic conditions. The counterpart of practically every other land under the sun can be

found here. Further, just about every known race is represented in its polyglot population. And, while these people are widely divergent in origin, manners, tastes and customs, they are united as one on the premise that there is no place on earth quite as nice as California.

California is the perfect vacationland. Nowhere else on earth offers so much to assure you a health-building, vitalizing, "different" vacation. Don't put off longer your visit to California—the NEW California! It's an all-year vacationland, so go any time and, to get the most out of your trip, we invite you to try UNION PACIFIC!





"Old Spanish Days" fiesta, Santa Barbara

The Spanish Influence



It was a Spaniard, Fortuno Ximenes, who, in 1533, discovered what is now known as the peninsula of lower California, and a Spaniard, Juan Rodriguez Cabrillo, who landed on what is now actually California. In the year 1542 he sailed into San Diego bay which he named "San Miguel." Later Spanish padres under the leadership of Father Junipero Serra founded there the Mission San Diego de Alcala, the first of twenty-one missions established in California extending from San Diego on the south to Sonoma on the north along "El Camino Real," the "King's Highway."

One of the classic examples of Spanish architecture is the Mission Santa Barbara which is today one of the best preserved of any of the old mission buildings. Constructed in 1815 it is a blending of Spanish and Moorish architecture.

The customs, songs and dances of Old Spain are still kept alive in many communities where once a year a "Fiesta Days" celebration is held. On these occasions work is suspended while the entire populace of the community and surrounding territory don Spanish costumes, sing Spanish songs and stage the folk dances native to that country.



Mission Inn, Riverside

'Round and About

SOUTHERN CALIFORNIA

There are many ways to go to California but Union Pacific takes you through historic and beautiful Salt Lake City, Utah, as well as gay, pleasure-loving Las Vegas, Nevada, gateway to the Hoover Dam-Lake Mead recreational area. Your entry into California on the Union Pacific also takes you through Victorville, gateway to Mojave Desert resorts and guest ranches, as well as the new desert residential communities of Apple Valley and Hesperia.

Passing on through picturesque Cajon Pass your first stop is at San Bernardino, home of the annual

Orange Show, and gateway to mountain resorts and residential areas like Lake Arrowhead, Big Bear and which in winter are also ski resorts. Next is Riverside, the orange capital of the world, and home of famous Mission Inn. The Inn, fashioned in Spanish colonial style, now modernized combines the "Old California" with modern splendor. Just outside Riverside stands Mt. Rubidoux on whose summit originated the Easter Sunrise services in America.

Both San Bernardino and Riverside are Union Pacific gateways to Palm Springs, the most famous of Cali-

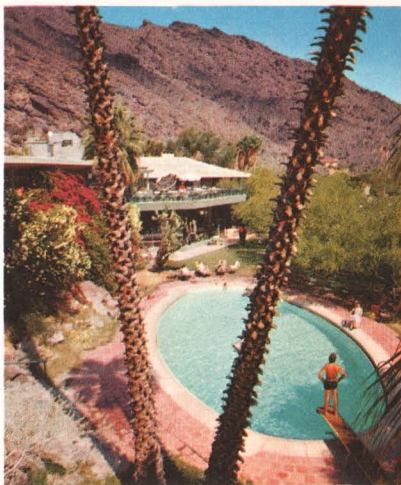


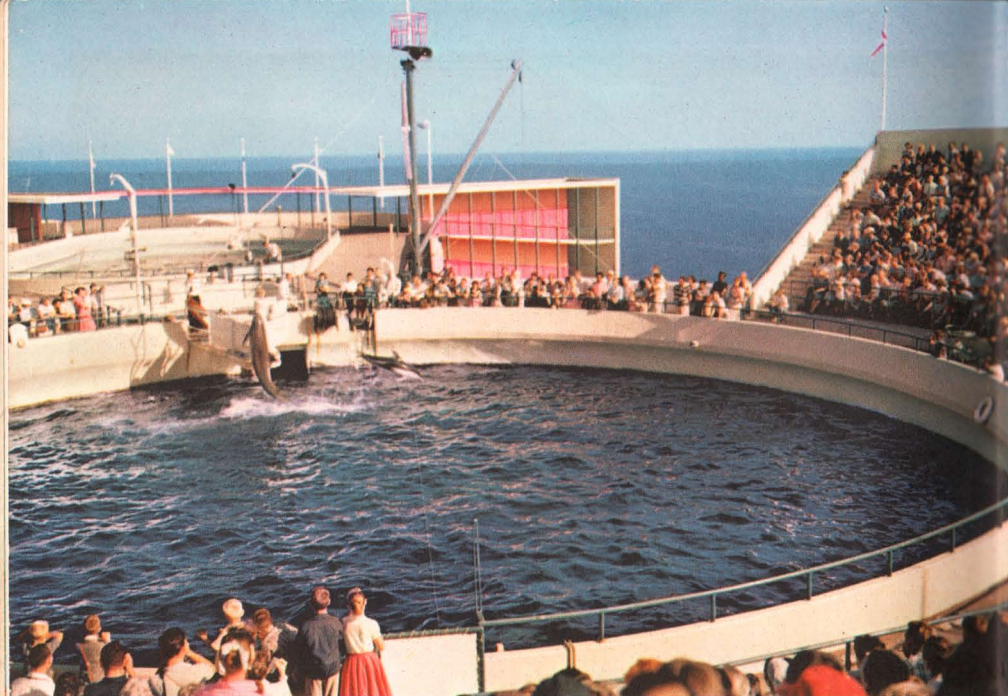
Newport-Balboa Yacht Harbor

fornia desert resorts. More people are discovering the thrill of desert living each year and enjoy Palm Springs' famous hotels, resorts and guest ranches. Probably more movie stars have homes in Palm Springs than in any other one community in California. To the South are Palm Desert, La Quinta, Indio, then the great Imperial Valley and its Salton Sea.

Between Riverside and Los Angeles are miles of well-kept vineyards and citrus groves . . . fast growing cities, new residential and industrial areas with spectacular shopping centers. In the heart of the citrus belt is Pomona, the site, each year, of the Los Angeles County Fair, largest of its kind in the world.

Tennis Club Pool, Palm Springs





Daily Porpoise shows at "Marineland-of-the-Pacific"

A portion of Long Beach's famous ocean strand





Entrance to Fantasyland, Disneyland

From East Los Angeles station (pictured on page 38) Union Pacific buses speedily transfer those whose destinations are: Alhambra, Pasadena (whose Tournament of Roses and Rose Bowl game are nationally televised and broadcast), to Glendale, gateway to San Fernando Valley.

Another U.P. bus route includes Whittier, La Habra, Fullerton and Anaheim (where Disneyland is the "mecca" of thousands, young or old) and near-by is another famous tourist attraction, "Knott's Berry Farm." (Gray Line Tours from Los Angeles, of course, include either or both Knott's Berry Farm and Disneyland.)

Six miles from Anaheim is Santa

Ana, largest city in Orange County. Near it are the great El Toro Marine Airbase, famous San Juan Capistrano Mission, and the beautiful beach cities of Laguna, Newport-Balboa, Corona del Mar and Costa Mesa.

Service to the south includes Long Beach, Wilmington and San Pedro. Near San Pedro, on Palos Verdes Peninsula, is "Marineland of the Pacific," a new tourist attraction. In its oceanarium's two salt-water tanks thousands of large and small sea specimens may be viewed.

Just twenty-five miles offshore and conveniently reached by steamer from Wilmington, lies the jewel-like island of Catalina. Here may be



Coronado Ferry against skyline of San Diego

viewed, from glass-bottom boats, the famous submarine gardens. Swimming, golf, deep sea fishing and sailing are favored sports.

After passing East Los Angeles it is but a few minutes until your train glides to a stop in the Union Station in downtown Los Angeles.

Just one hundred twenty miles south of Los Angeles lies the cradle of California civilization, the once easy-going, now bustling and hospitable city of San Diego. During the war it was America's greatest Naval Operating Base. It is still a key naval training base with near-by Marine and Coast Guard training stations. Its post-war aircraft and electronics industry continues an important factor. San Diego's Balboa Park (and Zoo) is one of the largest and most beautiful municipal parks in the nation. Sightseeing tours include Balboa Park

as well as "Old Town" and Ramona's birthplace, near-by Missions, the great harbor and historic sites. Near-by are fashionable Coronado Beach, beautiful La Jolla and Mission Beach and the popular Del Mar race track. Sixty miles from San Diego is Mt. Palomar Observatory which houses the world's largest telescope.

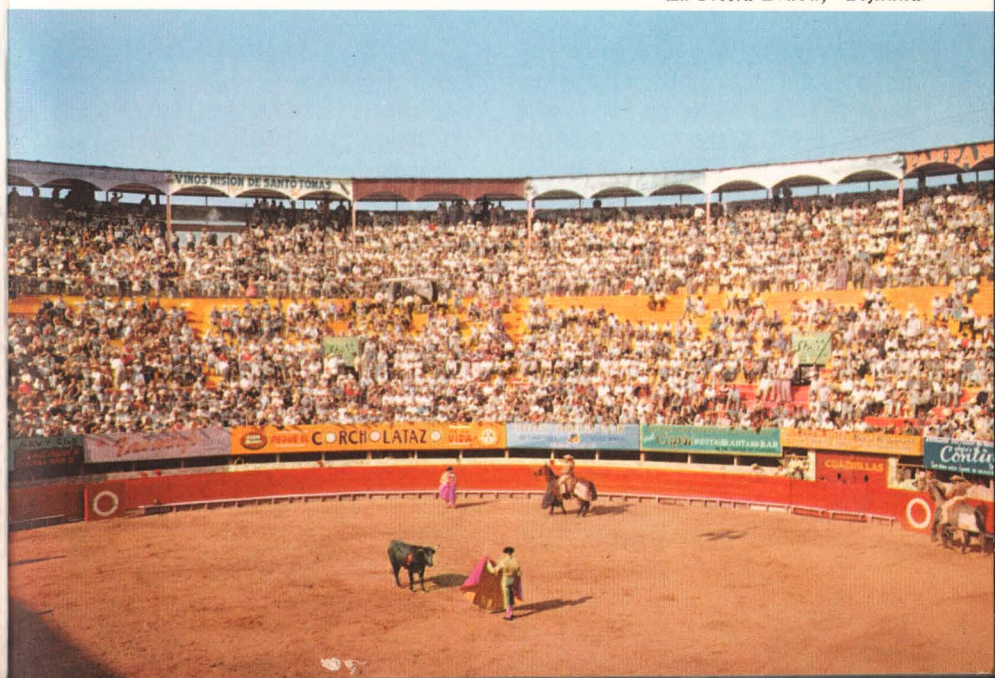
San Diego is just a few miles from the Mexican border, and sightseeing tours may be taken to quaint Tijuana noted as an international "free trade zone." Tijuana is also popular for its Jai Alai games, week-end horse racing and bull fights. Further south is Ensenada on beautiful Todos Santos Bay . . . it was here that Robert Louis Stevenson wrote "Treasure Island."

From Los Angeles your trip to San Diego should be one-way via the Riviera-like coastline and one-way via inland pastoral regions for an unforgettable variety of scenery.



Beach and Cove at La Jolla

"La Fiesta Brava," Tijuana





Colorful

LOS ANGELES

Few cities enjoy as wide a popularity as Los Angeles, mainly perhaps because Los Angeles is known as the movie capital of the world. But Los Angeles is more than that—it is also an industrial giant with a vast and varied industrial production and a seaport second only to New York in exports. Its dynamic way of doing things is ever the admiration and envy of less progressive communities.

As a center for science, culture and art, Los Angeles ranks high among the leading cities of the world. The famous Los Angeles Philharmonic Orchestra, supported by popular subscription, and the Los Angeles Civic

Light Opera Association are evidence that Angeleans want and get the best. Here stand the famous University of Southern California, Griffith Park Planetarium, and in near-by San Marino the renowned Huntington Library and Art Gallery. At the same time Los Angeles is highly sports-minded and provides facilities for enjoying practically every known sport. Its Coliseum, built for 1932 Olympic games, is scene of civic spectacular events, college and pro football. In 1958 it became the new home of the Los Angeles "Dodgers" major-league baseball team (formerly of Brooklyn). California visitors may now



The Los Angeles Cloverleaf Freeway System revolves around the Civic Center with freeways to Hollywood, Harbor, Pasadena, Santa Ana and San Bernardino

enjoy major league baseball in both Los Angeles and San Francisco (latter the new home of the "Giants" formerly of New York City). Both thoroughbred racing and western harness racing have annual schedules at Santa Anita and Hollywood Park race tracks.



A famous night club, Hollywood

Los Angeles is the vortex of over one-hundred-fifty surrounding communities between the mountains and the sea. Almost a part of Los Angeles are Santa Monica, Ocean Park, Venice, Manhattan Beach, Hermosa Beach and Redondo Beach.

"Pacific Ocean Park," America's newest family amusement park, opens in July 1958. On the shoreline where Santa Monica and Los Angeles meet, it has 28 acres of rides, exhibits, shops and attractions. Motion picture artisans, architects and engineers have created many amazing features such as "Neptune's Kingdom," a Sea Circus and a South Sea Island. In the Park's ballroom you may dance to Lawrence Welk and his famous orchestra.



Pershing Square, downtown Los Angeles, haunt of soap box orators; underground is a three level garage. In far center is Union Pacific Building and ticket office, Biltmore Hotel is out of picture to right

• **MIRACLE MILE** (right) is one of many amazing business centers, along fabulous **WILSHIRE BOULEVARD** which extends from downtown Los Angeles through Beverly Hills, Westwood Village, Brentwood, to Ocean Avenue in Santa Monica.



Olvera Street is a bit of Old Mexico transplanted to the old Plaza neighborhood, where Los Angeles had its beginning. Just across from the Union

Station, at the foot of Sunset Boulevard, is this Mexican market-place with its colorful wares. During its many holiday fiestas you may join the



Picturesque Olvera Street, Los Angeles

fun, dine in quaint cafes featuring Spanish foods, and be entertained by native music and dancing.



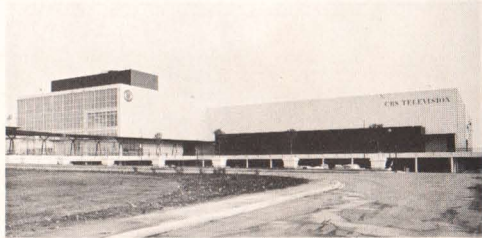
Like a sidewalk cafe in Paris . . . at the Farmer's Market

Not far from Olvera Street, out on North Broadway, is new Chinatown, a Chinese shopping center featuring Oriental art and wares. Its restaurants are nationally-famous for the finest of Chinese food.

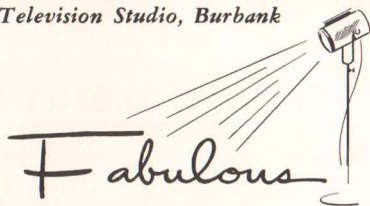
The world-renowned Farmer's Market started during the depression with 18 stalls in a weed patch at West Third and Fairfax Streets. Today it has over 150 fine shops and stores, with more than 2,000 employees. Shoppers from 48 states and many foreign countries are among its 40,000 daily customers. It is truly a "World Fair of Food."



NBC Television Studio, Burbank



CBS Television City, Hollywood



HOLLYWOOD

With seven TV stations, and its major movie studios turning to TV film production, Hollywood is fast becoming the nation's television capital, offering daily black and white and color shows. Many of your favorite network radio shows also originate in Hollywood. Free tickets for many of these shows are available at the All-Year Club Tourist Information Center downtown at 628 West Sixth Street.



Glamorous movie premiere



Famed Hollywood Bowl

Each summer "Symphonies Under the Stars," in famous Hollywood Bowl, feature the finest of classical and popular musical spectaculars.

Hollywood belongs to all America, and knowing this, it extends a cordial invitation to come for a "peek behind the scenes" and to enjoy the gay round of entertainment it offers.

Its neighbors, Beverly Hills and Westwood Village, are noted for their beautiful homes, department stores and smart shops, famous restaurants, apartments and hotels. Westwood Village is also the home of the University of California at Los Angeles (U.C.L.A.).



North

ALONG THE COAST

Leaving Los Angeles you have a choice of traveling to San Francisco by way of the San Joaquin Valley and Bakersfield, Fresno, Merced and Stockton, through the great vineyards, fruit orchards and cotton fields of the irrigated central valley — or taking the more picturesque route up the coast.

Just ninety-seven miles north of Los Angeles, on the coast route, lies the beautiful city of Santa Barbara, which of all California cities, has preserved most Spanish atmosphere. Its slightly residential district is one of the finest in the country. Here, also, is located



Santa Barbara County Court House

the famed Santa Barbara Mission, claimed by many to be the finest example of mission architecture in the State. Santa Barbara is also widely known for its "Old Spanish Days" fiesta held each year in August.

Continuing northward you may visit many picturesque towns rich in scenic or historic lore such as Solvang, San Luis Obispo (and about 50 miles north along the Coast Highway is "San Simeon," the fabulous castle estate of the late William Randolph Hearst which has been given to the State and is now open to the public), Paso Robles, and Salinas, the latter the lettuce capital of the world, and home of one of the West's largest rodeos.

Lying just 125 miles south of San Francisco is Carmel-by-the-Sea, Del



Monte with its famed Pebble Beach golf course, and the much-photographed Monterey Bay, which has been likened by many to the world-famous Bay of Naples.

From San Jose on up the "peninsula" you will be amazed at the industrial and residential development. Among the many attractive residential cities is Palo Alto, the home of Stanford University.

Enchanting Monterey Coast at Midway Point





Golden Gate Bridge on opening day of yachting season.

Cosmopolitan

SAN FRANCISCO

From the time in 1769 when Gaspar de Portola discovered San Francisco Bay and camped on a site south of the present city, San Francisco has enjoyed a colorful career. It is, in truth, a colorful and cosmopolitan city; and those who have enjoyed its hospitality and fine food long to return for further indulgence, while those who have only heard of this unmatched city set their imaginations racing at the mere mention of her name. And no wonder!

At the tip of the forty-mile peninsula that walls the narrow channel of

the Golden Gate, San Francisco smiles down from its many hills, some of which are scaled by quaint cable cars. The majestic beauty of her two massive bridges, one of which spans the Golden Gate, being the longest single suspension span in the world—the other the far-flung San Francisco-Oakland Bay Bridge whose $8\frac{1}{4}$ miles of steel girder and cable connect these two bay cities—never fail to enthrall the visitor.

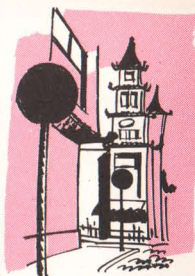
In certain quarters there is more than a suggestion of foreign cities. At one point you may be reminded of



Telegraph Hill and Coit Tower, Oakland in the distance



Famed Fisherman's Wharf, San Francisco



Paris, and not far away is world-famous Chinatown with strange pagoda-like structures lining the streets. Oriental costume mingles with American, and quaint Chinese patter may be heard on all sides. Windows of the shops are filled with expensive silks,

carved ivory, lacquer, teak, porcelain and strange Chinese food and delicacies. There is Fisherman's Wharf, where the sons of the sons of Italy tie up their fishing boats and where many fine restaurants specialize in deliciously fresh sea foods.



A strikingly beautiful mosaic graces the front of Memorial Chapel, Stanford University



San Francisco has long been famous for its night life, and when the sun has settled into the bosom of the Pacific a new side of this fascinating city comes to life . . . dancing in smart metropolitan hotels and exotic night clubs; latest plays in legitimate theatres with original New York casts; movies including Cinerama; light opera, grand opera and sym-

phony music in season. San Francisco is famous for its fine food, and the tastiest dishes of all nations are presented here to delight the gourmet.

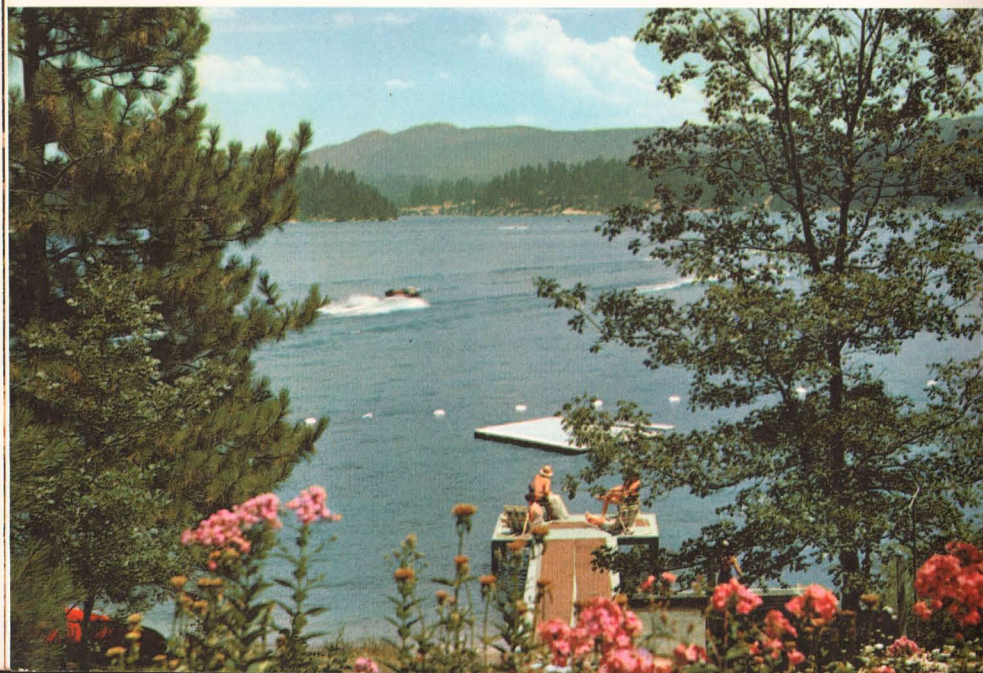
The climate of San Francisco is exceptionally mild. The average in winter is 46° and in summer 65° . The sea air is refreshing and invigorating. Nights are always cool and an extra wrap is worn with comfort.

The attractions of the city and its surroundings are almost endless. Trips can be taken, for instance, to Mt. Tamalpais and Muir Woods; to Carmel and Monterey; to Palo Alto and to the other bay cities round about.



Pebble Beach golf course, Monterey Peninsula

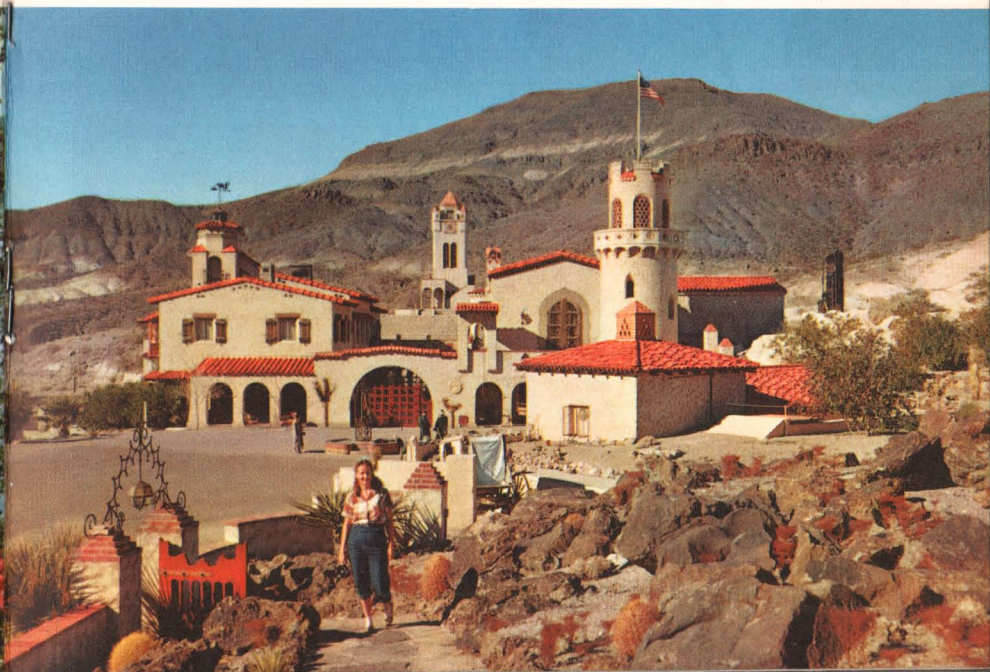
Lake Arrowhead, in San Bernardino Mountains





Avalon Bay, Romantic Catalina Island

Famed Castle of the late Death Valley Scotty





Alameda County Court House across Lake Merritt, Oakland

San Francisco has more than 100 parks, the most famous of which is Golden Gate Park covering 1,013 acres. Here is located M. H. DeYoung Memorial Museum, an anthropological, art and general museum containing thousands of exhibits, also Steinhart Aquarium and near-by Fleishacker Zoo. Kezar Stadium is site for 49-ers pro football games and the annual Shrine East-West game. You may now see professional baseball in San Francisco, new home of the "Giants" formerly of New York.

Just across the bay is Oakland, a city of industry and of beautiful homes that overlook placid Lake Merritt. Near at hand are Berkeley, site of

the University of California; Alameda, a garden city on an island; and other new and lovely suburban towns.



Campanile, University of California campus



Sutter's Fort Museum, Sacramento



Historic

SACRAMENTO

A little to the northeast of San Francisco and the bay cities lies Sacramento, the historic capital of California. Here John Sutter, the Swiss adventurer, maintained a large establishment named "New Helvetia," and near here was found the gold that

started the famous migration of 1849. Sutter's Fort is now an interesting museum, open daily.

To the north lies a wonderland of woods and mountains, grain fields and vineyards, majestic Mt. Shasta, and the great Redwood Empire, a land of towering, massive Redwood trees that were old when Christ was born; also Lassen Volcanic National Park, which has the only active volcano in the United States.





An impressive stand of big trees

Big Trees

California is noted for its many stands of big trees—"Sequoia Gigantea" they are called. Particularly outstanding are the groves to be found in Kings Canyon National Park and adjoining Sequoia National Park, both of which lie just east of Fresno. Other fine stands are to be found in the Mariposa Grove and the Tuolumne Grove in Yosemite National Park.

In the Giant Forest of Sequoia National Park stands the General Sherman Tree, estimated to be between 3,000 and 4,000 years old, with a height of 272.4 feet and a base diameter of 36.5 feet. The General Grant Tree rears its mighty top 267 feet into the air and has a base diameter of 40.3 feet. To see the sunlight filtering diagonally down through a stand of these hoary giants is one of nature's most beautiful sights.

Kings Canyon and Sequoia National Parks may be conveniently visited on an inexpensive circle tour from Fresno.





Lovely, mountain-rimmed Lake Tahoe



Y O S E M I T E

Yosemite is one of our greatest National Parks. Its chief feature is its lovely green valley, overlooked by majestic granite domes, fringed by feathery waterfalls and stupendous cataracts. It is an all-year playground drawing thousands of visitors summer and winter. During the latter season a complete snow and ice sports program is carried on. Offering complete hotel and camp accommodations, it is conveniently reached from Merced and Fresno.

*Yosemite Falls descends
in breath-taking beauty.*

L A K E T A H O E

In the lofty lap of the enchanting Sierra Nevada mountains, on the California-Nevada border, nestles Lake Tahoe, the largest fresh-water lake in California and one of the most alluring in the world. It is twenty-one miles long and twelve miles wide. Fine resorts line the shores of this sparkling blue mirror which is entirely surrounded by mountains. It is reached by a short side trip from Truckee, California, on the Overland Route.

On Your Way!



L A S V E G A S , H O O V E R D A M , A N D L A K E M E A D

Traveling to or from Southern California via Union Pacific you may stop over in gay Las Vegas, Nevada, where "Every Day's a Holiday." Now a desert "metropolis," nearing 50,000 population, it boasts new "sky-scraper" hotels. Visited annually by millions of tourists it is also a popular convention city.

Its fabulous resort hotels have made it the "entertainment capital of the world," featuring internationally famous stars of stage, screen and TV.

Las Vegas invites you to come "Play 'round the clock" where the "sky's the limit" for fun and recreation. Nature put the desert and the purple-hued mountains here, turned on the sunshine, and man built the

Keep in mind that traveling by rail gives you the opportunity to plan interesting side trips and stop-overs short of your main objective. Most of us make a long trip rather infrequently and should plan it so as to take in everything of real interest along the way.



Fremont Street from U.P. station

city and made the laws liberal to allow more freedom than anywhere else in America.

Motor buses operate on regular schedules from Las Vegas to Boulder City and Lake Mead Lodge. Hoover Dam harnesses the turbulent Colorado River forming Lake Mead, and provides irrigation, flood control, and electric energy for a wide area.

All forms of water sports, fine bass fishing and boat trips on Lake Mead are among the recreational attractions.

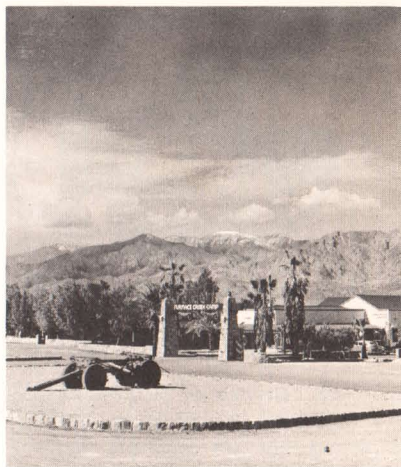
Below are briefly described two of the outstanding places of interest you may visit en route to or from California via Union Pacific. You will find the time and money expended very much worthwhile. Consider them well when planning your trip.



DEATH VALLEY CALIFORNIA

Once known as a land of desolation and tragedy, Death Valley, now a National Monument, is a popular winter resort of scenic beauty. Lying in the southeastern corner of California and practically on the Nevada border, Death Valley offers a delightfully equable winter climate. Days are warm and sunny, nights cool, clear and invigorating.

From Dante's View at an elevation of 5,160 feet one looks down upon Bad Water, 280 feet below sea level, and then shifting the gaze to the north sees Mt. Whitney thrusting its rugged head into the sky a distance of 14,496 feet. There, within one sweep of the vision, are the lowest and highest points in the United States.

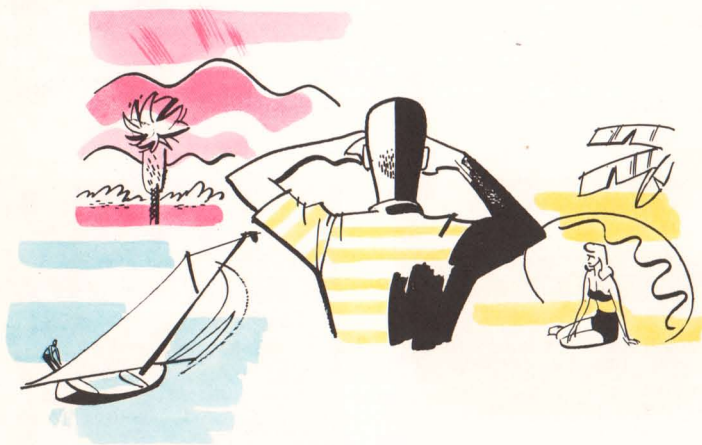


Furnace Creek Ranch, Death Valley

Furnace Creek Inn, a modern hotel, offers splendid accommodations, and Furnace Creek Ranch, a mile distant, offers informal resort living . . . swimming, golf, tennis and horseback riding are popular.

Famous "Scotty's Castle," in north end of valley, also offers hotel accommodations and conducted tours of the castle.

It is easy and inexpensive to visit Death Valley from Las Vegas, Nevada, during winter season November 1 to May 1, via L.T.R. Stage Line with round trip bus service, daily except Tuesdays.



Lights CAMERA!

California is a photogenic land. It offers the photographer a tremendous variety of subjects. Here are picturesque missions, seascapes, mountain views, waterfalls, big trees, eucalyptus and palm trees, a bit of Old Mexico, Chinatown, tremendous bridges and countless other types of scenery and subjects peculiar to this locality.

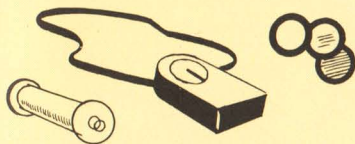
At most times of the year the light is crisp, clean and brilliant. In general an exposure meter is a recommended piece of equipment, for such a variety of subjects naturally calls for a variety of exposures—particularly if you are using color film.

Regardless of the intensity of sunlight, it should always be remembered that the exposure is largely determined by the key of the object to be photographed. Thus

low-key or dark objects, scenes with a lot of green trees or with shadow expanse, require more exposure. Beach scenes and scenes of high-key objects require correspondingly less exposure.

A slight atmospheric haze is often encountered in southern California. In color shots of landscapes the haze often lends added charm. In some cases where the haze produces a blue cast, which may be objectionable in color film, a haze filter or light ultraviolet filter will usually give sufficient correction.

For general black and white photography a panchromatic film is advisable. In many cases a light yellow filter will improve the tones in the picture, darken the sky and give a more harmonious relationship between all components of a picture.



Where a more dramatic effect is desired, an orange or red filter is indicated. The heavier filters are very useful at the beach or in cases where a white building, such as a mission, is outlined against the sky. Of course, the exposure must be increased to compensate for the filter used.

Since color film does not have much latitude, extreme care must be given that exposures are correct. Avoid, if you can, making color shots when the sun is high overhead, for at this time of day the best you can hope for, in most cases, is simply passable results. The morning hours and the afternoon hours—after, say, two or three o'clock—are best for color shooting. Avoid large areas of heavy shadow unless you have an idea of working up something dramatic. In general, a flat light, with the sun coming over your shoulder, will give you best color results, although many striking pictures are made with quattering light. At times a back light produces beautiful pictures of some subjects late in the afternoon, if you know how to handle color film exposure under these difficult conditions.

Your questions about photography will be answered fully and completely if you will address Manager, Photographic Department, Union Pacific Railroad, 1416 Dodge Street, Omaha 2, Nebraska.



GETTING READY

Unless you plan an extensive visit, it is better to travel lightly. Also, take with you only one small bag with the clothes and toilet articles that you will need while on the train and check the others in baggage service. This will add greatly to your comfort en route.

Your wardrobe for summer or winter in California should be similar to that which you would wear at home or would require for a visit to most any other American resort. Sport clothes are worn more here than in most other places. Light wraps are needed for summer evenings. During the winter season your heavy cloth or fur coat will rarely be necessary during the daytime, but it will often be comfortable for evening wear. While there are many occasions when you may wish to wear formal evening dress, it is seldom required.

RELAXATION...

All the Way



TRAVEL IN COMFORT

Consider well the comfort and convenience of travel by train which provides many services and conveniences that other means simply do not offer. You ride in the perfect comfort of deep-cushioned, air-conditioned cars—cool and clean. You need not be concerned with the outside weather. Come heat or cold or snow or rain, you're safe from the elements and have not a care in the world. Warm in winter, cool in summer, you are contented and at ease throughout the trip.

Through the wide windows—at eye level, or from the new Astra-Domes—passes a soothing, ever-changing panorama. Up ahead the engineer does the driving and gives you a smooth ride. Take a snooze if you wish . . . there's a crisp white pillow for your head. Hungry? You don't have to wait 'til you reach an eating house, or balance a difficult tray on your knees. You can eat just about when and what you wish, and it is tasty, appetizing food, prepared

by a trained staff, deftly served in a well-appointed dining car.

You can get up and move around whenever you wish. Large washrooms with toilet annex, also plenty of hot water, soap and towels on hand at all times, makes for general well-being and good living. Pleasant conversation with congenial fellow-travelers; a game of cards, or your favorite beverage are yours as the miles slip away. When night comes, there's sound, carefree sleep for all.

And when your final destination is reached you step off the train rested and refreshed, ready for business or pleasure as the case may be. Railroad stations are generally located near the heart of the city with plenty of local transportation to serve you.

Yes, travel by train offers many conveniences and comforts unmatched by others, and, when you go that way, every day of your trip pays dividends in rest and relaxation.



Scenery is an "extra course" you'll enjoy in the Dome Dining Car

Make your own "Westerns" from the Dome Lounge





UNION PACIFIC
Domeliners
AND
Streamliners
SERVING
CALIFORNIA

When you decide to go to California via Union Pacific you have made a wise decision. Union Pacific offers a choice of two different routes to California; one by way of Los Angeles, briefly described in this book—the other, called "The Overland Route," takes you due west from Ogden, across the Great Salt Lake, through Reno, Nevada and Sacramento, California, to San Francisco.

All Union Pacific trains between Chicago and the Pacific Coast operate into and out of the Chicago Union Station via The Milwaukee Road between Chicago and Omaha.

There are no finer trains in the world than Union Pacific's Domeliners . . . certainly no train offers you as much as the "City of Los Angeles" between Chicago and Los Angeles.

The "City of Los Angeles" carries the only Dome Diner between Chicago and California. Its three beautiful dining rooms (dome, main dining room, and the private "Gold Room") all serve the same unexcelled cuisine for which the Union Pacific

is so famous. The Dome Lounge Car features the dome "observatory" room, main lounge, cocktail lounge and private card room. Here are found the comfort and luxury of a fine private club.

The "City of Los Angeles" offers the latest style Pullman sleeping cars with all-room accommodations . . . with bedrooms, compartments and drawing rooms having enclosed annex toilets, vanity mirrors and other smart appointments. In addition to the Dome Lounge Car there is a beautiful Pullman Redwood Lounge Car which has five of the latest type bedrooms.

For Coach patrons the "City of Los Angeles" provides the finest of modern coaches plus a Dome Coach. The seats in the dome room of this coach are not reserved and are available to all for sight-seeing; downstairs are reserved seats of latest design as in the other coaches . . . all having reclining backs and adjustable leg rests for day and night comfort.

In addition to the Dome Diner there is a special Cafe-Lounge Car for coach patrons where popular low-cost meals are served; also a la carte service and special children's menus.



Domeliner "City of Los Angeles" offers modern transportation at its best

In the lounge you will enjoy refreshments, radio and a library of popular magazines and papers.

To provide equally fine coach service between Chicago and Los Angeles—"The Challenger" Streamliner operates now during the peak summer season and December-January. In addition to the same fine coaches, as on the "City of Los Angeles," it carries a full-length Challenger diner serving excellent meals at the lowest possible cost, and a fine club-lounge car with bar, radio, and free travel library.

Between Chicago and the Bay

Cities the Streamliner "City of San Francisco" is the fastest train over any route. It, too, has long been popular for its hospitable dining car service and excellent accommodations, both coach and Pullman. In addition to its Club-Lounge Car for Pullman patrons there is a Cafe-Lounge car for coach patrons serving moderately priced meals.

The Domeliner "City of St. Louis" offers travelers from the South and Southeast the only through train between St. Louis and Los Angeles. It operates via The Wabash Railroad between St. Louis and Kansas City. A new Dome Lounge Car (like that on



the "City of Los Angeles") runs between Kansas City and Los Angeles. A new Dome Coach, to run all the way between St. Louis and Los Angeles will be an added feature by mid-summer, 1958.

In conjunction with the "San Francisco Overland" this Domeliner provides through coach and Pullman service between St. Louis and San Francisco; with Dome Coach service between St. Louis and Ogden, and Dome Lounge Car service between Kansas City and San Francisco.

Yes, travel by train offers many comforts and pleasures unmatched by others, and, when you go Union Pacific you can enjoy the best.

36 *Pullman "Redwood Lounge" Car, so named because of its California Redwood decor*





"Shutter bugs" enjoy shooting scenery from Dome Coach on the "City of Los Angeles" or "City of St. Louis"

37

Coach seats have adjustable, reclining backs and "stretch out" leg rests





Union Pacific's East Los Angeles station is the scene of many a happy reunion or a "bon voyage." There is free trainside parking for family or friends meeting you here; or our air-conditioned buses whisk you to certain destinations on our Anaheim, Glendale or Long Beach routes. (See page 7 for story of this service)

FAMILY PLAN FARES

More and more families are taking advantage of Union Pacific's Family Plan Fares . . . which really cut travel costs. The starting trip may begin on Monday, Tuesday, Wednesday or Thursday with liberal stop-overs en-

route and return trip may start any day of the week. For full details as to how this plan can save you money, for vacation or business travel, see list of Union Pacific offices on page 40, or your local travel agent.

ESCORTED ALL-EXPENSE TOURS

(From Chicago and Omaha)

The Union Pacific Department of Tours operates delightful all-expense, escorted tours to California, including visits to Hoover Dam-Las Vegas, Old Mexico and Yosemite National Park. Tours are also operated to the Canadian Rockies, and the Pacific Northwest, Colorado, Yellowstone-Grand Teton, and the Southern Utah-Northern Arizona national parks. These low-cost tours include every

necessary item of expense, including all meals. In addition, a courteous, well-informed escort accompanies each party to relieve you of all arrangements and travel details. All you do is sit back and enjoy every minute of your vacation. For detailed information and literature, address Union Pacific Department of Tours, One South LaSalle Street, Chicago 3, Illinois, or ask any Union Pacific representative.

Famous Vacation-Lands

Served by
the Union Pacific

In selecting your route to California decide now to go Union Pacific which serves so many of the West's national parks and outstanding scenic and recreational areas — pictured on this page.

No other railroad directly serves so many of these places, so, when you travel to or from California via Union Pacific you can conveniently include one or more in your itinerary.

Any Union Pacific representative will be happy to help you with your vacation plans.

See list of Union Pacific offices on following page.

Let's GO!



**ZION,
BRYCE,
GRAND CANYON
NAT'L PARKS**



**PACIFIC
NORTHWEST**



**SUN VALLEY
IDAHO**



**YELLOWSTONE
NAT'L PARK**



**GRAND TETON
NAT'L PARK**



COLORADO



UNION PACIFIC TRAVEL OFFICES

GET EXPERT HELP WHEN PLANNING YOUR TRIP

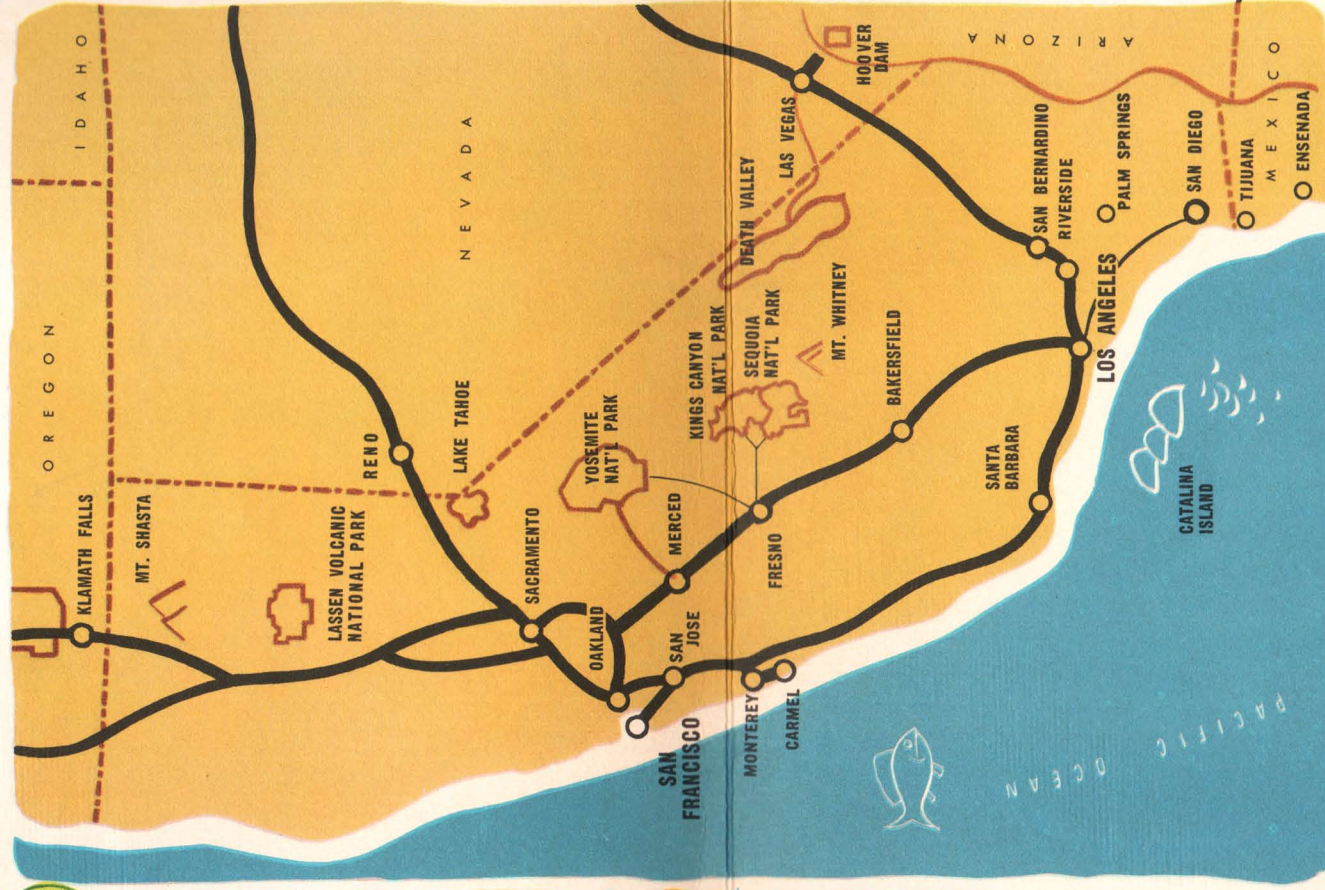
Aberdeen, Wash.....3 Union Pass. Station
Alhambra, Cal.....51 So. Garfield Ave.
Astoria, Ore.....968 Commercial St.
Atlanta 3, Ga.....705 Fulton Nat'l Bk. Bldg.
Bend, Ore.....1054 Bond St.
Beverly Hills, Cal.....9571 Wilshire Blvd.
Birmingham 3, Ala.....701 Brown-Marx Bldg.
Boise, Idaho.....Idaho Bldg., 212 No. 8th St.
Boston 8, Mass.....294 Washington St.
Bremerton, Wash.....228 First St.
Butte, Mont.....609 Metals Bank Bldg.
Cheyenne, Wyo.....120 West 16th St.
Chicago 3, Ill.....1 So. LaSalle St.
Cincinnati 2, O.....303 Dixie Terminal Bldg.
Cleveland 13, O.....1407 Terminal Tower
Dallas 1, Tex.....2108 Mercantile Bank Bldg.
Denver 2, Colo.....535 Seventeenth St.
Des Moines 9, Ia.....407 Equitable Bldg.
Detroit 26, Mich.....612 Book Bldg.
East Los Angeles, Cal.....5454 Ferguson Dr.
Eugene, Ore.....163 East 12th Ave.
Fresno 1, Cal.....207 Rowell Bldg.
Glendale 3, Cal.....404½ No. Brand Blvd.
Hollywood 28, Cal.....6702 Hollywood Blvd.
Huntington Park, Cal.....7002 Pacific Blvd.
Kansas City 6, Mo.....2 East Eleventh St.
Las Vegas, Nev.....Union Pacific Station
Lewiston, Ida.....Room 7, Union Depot
Lincoln 8, Nebr.....234 So. 13th St.
Long Beach 2, Cal.....144 Pine Ave.
Los Angeles 14, Cal.....6th and Olive St.
Medford, Ore.....207 Medical Center Bldg.
Memphis 3, Tenn.....1137 Sterick Bldg.
Milwaukee 3, Wis.....814 Warner Bldg.
Minneapolis 2, Minn.....
.....890 Northwestern Bank Bldg.

Any of our representatives at the offices listed will be glad to assist with all details of your trip, at no cost to you. Contact the one closest to you.

New Orleans 12, La.....210 Baronne St.
New York 20, N. Y.....626 Fifth Ave.
Suite 350, Rockefeller Center
Oakland 12, Cal.....214 Central Bldg.
Ogden, Utah.....Ben Lomond Hotel Bldg.
Omaha 2, Nebr.....Cor. 15th and Dodge Sts.
Pasadena 1, Cal.....Union Pacific Station
Philadelphia 2, Pa.....904 Girard Trust Bldg.
Pittsburgh 22, Pa.....1419 Oliver Bldg.
Pocatello, Ida.....Union Pacific Station
Pomona, Cal.....Union Pacific Station
Portland 5, Ore.....701 S.W. Washington St.
Reno, Nev.....501 No. Virginia St.
Riverside, Cal.....Union Pacific Station
St. Joseph 2, Mo.....516 Francis St.
St. Louis 1, Mo.....1223 Ambassador Bldg.
Sacramento 14, Cal.....217 Forum Bldg.
Salina, Kans.....3rd and Ash Sts.
Salt Lake City 1, Utah.....417 So. Main St.
San Diego 1, Cal.....320 Broadway
San Francisco 2, Cal.....Geary at Powell St.
San Jose 13, Cal.....811 Bank of Amer. Bldg.
San Pedro, Cal.....805 So. Pacific Ave.
Santa Ana, Cal.....305 North Main St.
Santa Monica, Cal.....307 Santa Monica Blvd.
Seattle 1, Wash.....1300 Fourth Ave.
Spokane 4, Wash.....727 Sprague Ave.
Stockton 6, Cal.....206 California Bldg.
Tacoma 2, Wash.....114 So. Ninth St.
Toronto 1, Ontario.....201 Can. Pac. Bldg.
Tulsa 3, Okla.....721 Kennedy Bldg.
Vancouver, B. C.....Rm. 1125, 355 Burrard St.
Walla Walla, Wash.....Union Pacific Station
Washington 5, D. C.....600 Shoreham Bldg.
Winston-Salem 3, N. C.....311 Reynolds Bldg.
Yakima, Wash.....Union Pacific Bldg.

UNION PACIFIC RAILROAD

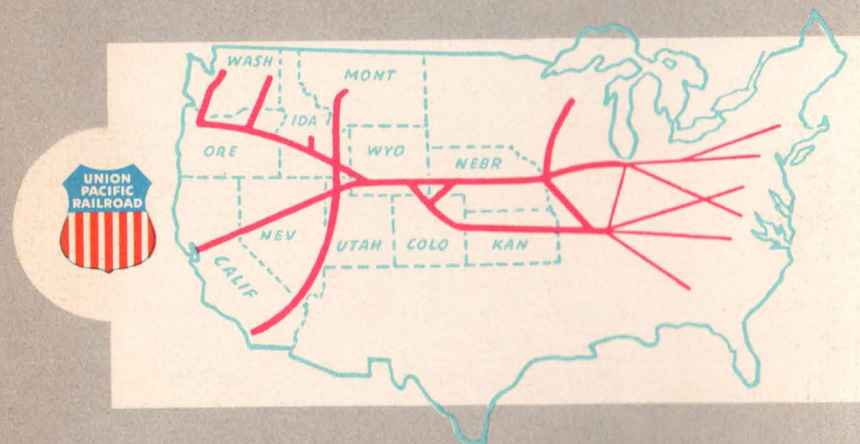
CALIFORNIA





REGIONAL MAP

SERVING THE BEST OF THE WEST



WITH DEPENDABLE TRANSPORTATION

Be Specific . . . Say "UNION PACIFIC"