



CALIFORNIA

UNION PACIFIC RAILROAD



(Front Cover) Snow-capped peaks and orange groves near Pomona, California



Romantic Land of Many Lands

Of all the states of the Union, no other name fires the imagination or quickens the pulse like mention of the name "California." From the time of the first explorers, who came by sea in tiny galleons seeking "El Dorado," down to the present-day sophisticated traveler who arrives aboard one of Union Pacific's fine trains, California has always held the promise of the richer, fuller life.

Second largest state, California embraces within its boundaries four national parks and an infinite variety of scenic attractions and climatic conditions. The counterpart of practically every other land under the sun can be

found here. Further, just about every known race is represented in its polyglot population. And, while these people are widely divergent in origin, manners, tastes and customs, they are united as one on the premise that there is no place on earth quite as nice as California.

California is the perfect vacationland. Nowhere else on earth offers so much to assure you a health-building, vitalizing, "different" vacation. Don't put off longer your visit to California—the NEW California! It's an all-year vacationland, so go any time of the year—but go, and, to get the most out of your trip, go UNION PACIFIC!





"Old Spanish Days" fiesta, Santa Barbara

The Spanish Influence



It was a Spaniard, Fortuno Ximenes, who, in 1533, discovered what is now known as the peninsula of lower California, and a Spaniard, Juan Rodriguez Cabrillo, who landed on what is now actually California. In the year 1542 he sailed into San Diego bay which he named "San Miguel." Later Spanish padres under the leadership of Father Junipero Serra founded there the Mission San Diego de Alcala, the first of twenty-one missions established in California extending from San Diego on the south to Sonoma on the North along "El Camino Real," the "King's Highway."

Many of the native Indians were

brought to live in and around the missions. Under the guidance of the missionaries they constructed the mission buildings, their own adobe houses, tended cattle and toiled in the fields surrounding each of the missions. Some were schooled in music and the simpler arts. The interior of some of the mission walls were painted by the Indians with vegetable colors that are still bright after more than 150 years.

One of the classic examples of Spanish architecture is the Mission Santa Barbara which is today one of the best preserved of any of the old mission buildings. Constructed in



1815 it is a blending of Spanish and Moorish architecture and replaced a former structure destroyed in the earthquake of 1812.

The customs, songs and dances of Old Spain are still kept alive in many communities where once a year a "Fiesta Days" celebration is held. On these occasions work is suspended while the entire populace of the community and surrounding territory don Spanish costumes, sing Spanish songs and stage the folk dances native to that country.

In other ways, too, the influence of its Spanish discoverers and first settlers who brought civilization to this great state is evidenced in California today. It may be seen in its architecture, names and customs, and it is definitely felt in the genuine hospitality of its warm-hearted people.

Mission Inn, Riverside



Desert Joshua Trees





Lazy days on a California beach

'Round and About

SOUTHERN CALIFORNIA

There are many ways to go to California but only Union Pacific takes you through historic and beautiful Salt Lake City, Utah, as well as gay, pleasure-loving Las Vegas, Nevada, gateway to the Hoover Dam-Lake Mead recreational area. Your entry into California on the Union Pacific also takes you through San Bernardino and Riverside, the latter the orange capital of the world and home of famous and

beautiful Mission Inn. The Inn, fashioned in Spanish colonial style, contains priceless art objects and pioneer relics. Just outside Riverside stands Mt. Rubidoux, the summit of which is the scene of an impressive Easter sunrise service attended by thousands.

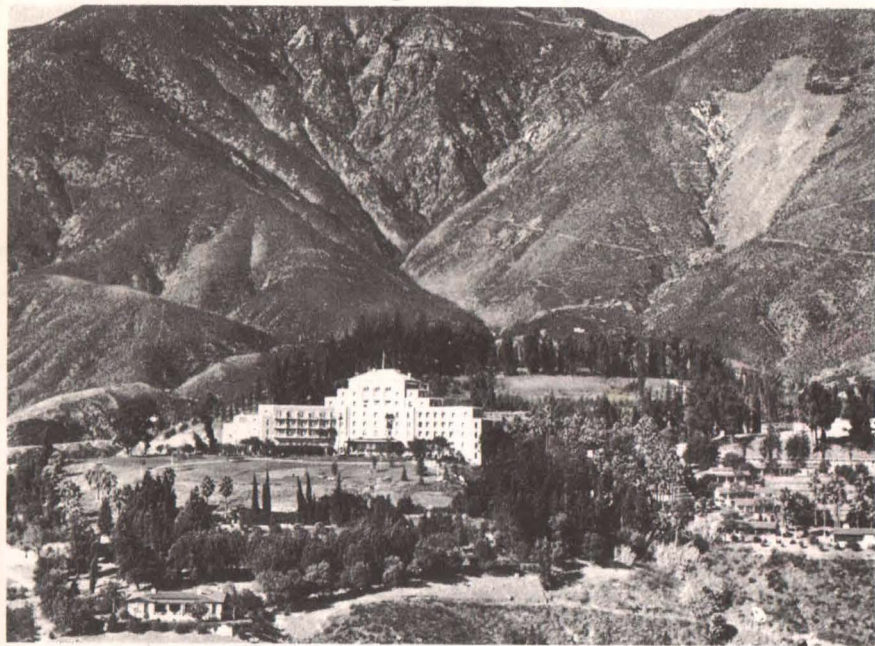
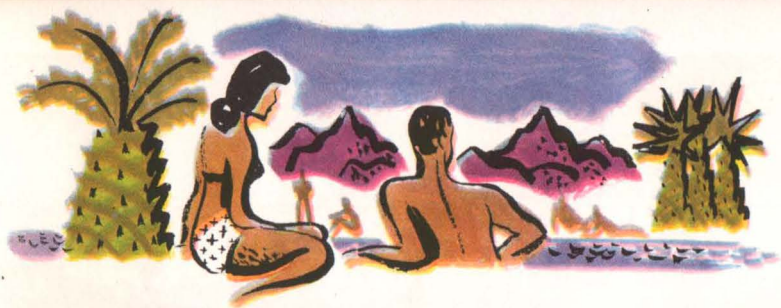
Continuing on westward your train speeds through mile after mile of well-kept citrus groves and vineyards with the towering purple mountains



An inspiring view of graceful Laguna Beach

A portion of Long Beach's famous ocean strand





Arrowhead Springs, San Bernardino

in the background. Next come Ontario and Pomona in the heart of the orange country. Pomona is the site, each year, of the Los Angeles County Fair, largest of its kind in the country.

Union Pacific buses which meet all transcontinental trains at East Los Angeles provide travelers to near-by Pasadena, Glendale, Whittier, La Habra, Fullerton and Anaheim, as well

as those farther west, Long Beach and San Pedro, with a convenient, time-saving service. Rail tickets are honored on the buses, without extra charge, to any of these cities.





Civic Center, San Diego

After passing East Los Angeles it is but a few minutes until your train glides to a stop in the new Union Station in downtown Los Angeles and you are in the metropolis of Southern California and the capital of the whole vacation empire.

Just one hundred twenty miles south of Los Angeles lies the cradle of California civilization, the once easy-going, now bustling and hospi-



table city of San Diego. During the war it was America's greatest Naval Operating Base. Here is located Balboa Park, one of the largest and most beautiful municipal parks in the nation. Near by are fashionable Coronada Beach, LaJolla and Mission Beach, as well as the popular and beautiful Del Mar race track. Here also is Mt. Palomar Observatory which houses the world's largest telescope.

San Diego is just a few miles from the Mexican border, and a brief ride takes you to quaint Tijuana and Ensenada in Old Mexico.



Mission San Diego de Alcalá, San Diego

*Showplace of southern California,
Avalon Bay, Catalina Island*





Colorful

LOS ANGELES

Few cities enjoy as wide a popularity as Los Angeles, mainly perhaps because Los Angeles is known as the movie capital of the world. But Los Angeles is more than that—it is also an industrial giant with a vast and varied industrial production and a seaport second only to New York in exports. Its dynamic way of doing things is ever the admiration and envy of less progressive communities.

As a center for science, culture and art, Los Angeles ranks high among the leading cities of the world. The famous Los Angeles Philharmonic Orchestra, supported by popular subscription, and the Los Angeles Civic

Light Opera Association are evidence that Angeleans want and get the best. Here stand the famous University of Southern California, Griffith Park Planetarium, and also renowned Huntington Library. In the vicinity are various other libraries, museums of history, science and art, and "little theatres." At the same time Los Angeles is highly sports-minded and provides facilities for enjoying practically every known sport. Close at hand and easily reached are the famous thoroughbred race tracks, Hollywood Park and Santa Anita.

Los Angeles is, in a sense, the entertainment capital of the world and



Wilshire Blvd. at MacArthur Park, Los Angeles

A gay night spot, Los Angeles



some of the finest talent may be seen performing nightly in the smart night clubs and restaurants of the city.

Near-by Pasadena is especially noted for its New Year's Day Tournament of Roses and Championship Rose Bowl football game. Almost a part of Los Angeles are Malibu, Santa Monica, Ocean Park, Venice, Hermosa, Redondo and Long Beach—known as the "beach cities." Here miles of white, sandy beaches offer wholesome recreation for countless thousands.



Strikingly beautiful residential scene, Los Angeles



Quaint Olvera Street, right in the heart of downtown Los Angeles, is a breath of Old Mexico within the shadow of the City Hall. Quaint cafes abound, featuring Mexican food, served to the accompaniment of rhyth-



Los Angeles' magnificent City Hall



Picturesque Olvera Street, Los Angeles



mic Mexican music and dancing by gaily costumed performers.

Just twenty-five miles offshore and conveniently reached by steamer, lies the jewel-like island of Catalina. Here may be viewed, from glass-bottom boats, the famous submarine gardens. All forms of outdoor sport and deep-sea fishing are offered.

It would take several books the size of this one to merely list all of the cultural, scenic and entertainment opportunities of Los Angeles and vicinity. So go, and see them for yourself.



NBC Radio Studio, Hollywood



HOLLYWOOD

Here is a name practically synonymous with movies, glamour and beauty—the locale for many a “rags to riches” story both in “reel” life and real life.

With the wealth of talent concentrated here it is not unusual that most nationwide radio programs now originate in Hollywood. A city of beautiful homes, it is also the home of Hollywood Bowl where famous “Symphon-



Glamorous movie premiere



CBS and KNX Radio Studio, Hollywood



Famed Hollywood Bowl

ies Under the Stars” are summer entertainment fare.

It is natural, too, that Hollywood and its neighbors Westwood and Beverly Hills, would have some of the finest department stores, smart shops, restaurants and night clubs in the country. Westwood embraces the campus of the University of California at Los Angeles.

Hollywood belongs to all America, and knowing this, Hollywood extends a cordial invitation to come for a “peek behind the scenes” and to enjoy—if only for a while—the gay round of entertainment it offers.



North

ALONG THE COAST

Leaving Los Angeles you have a choice of traveling to San Francisco by way of the San Joaquin Valley and Bakersfield, Fresno, Merced and Stockton, through the heart of the great vineyards and fruit orchards of the irrigated central valley—or taking the more picturesque route up the coast.

Just ninety-seven miles north of Los Angeles, on the coast route, lies the beautiful city of Santa Barbara, which of all California cities, has preserved most Spanish atmosphere. Its slightly residential district is one of the finest in the country. Here, also, is located



Santa Barbara County Court House



the famed Santa Barbara Mission, claimed by many to be the finest example of mission architecture in the State. Santa Barbara is also widely known for its "Old Spanish Days" fiesta held each year during the full moon in the month of August.

Continuing north along the fringes of the wide Pacific beaches you will note a gradual change in the vegetation. Palms are seen less and evergreens appear with increasing frequency. You pass through the picturesque towns of Guadalupe, San Luis Obispo, Atascadero, Paso Robles, and Salinas, the latter the lettuce capital of the world, and home of one of the West's largest rodeos.

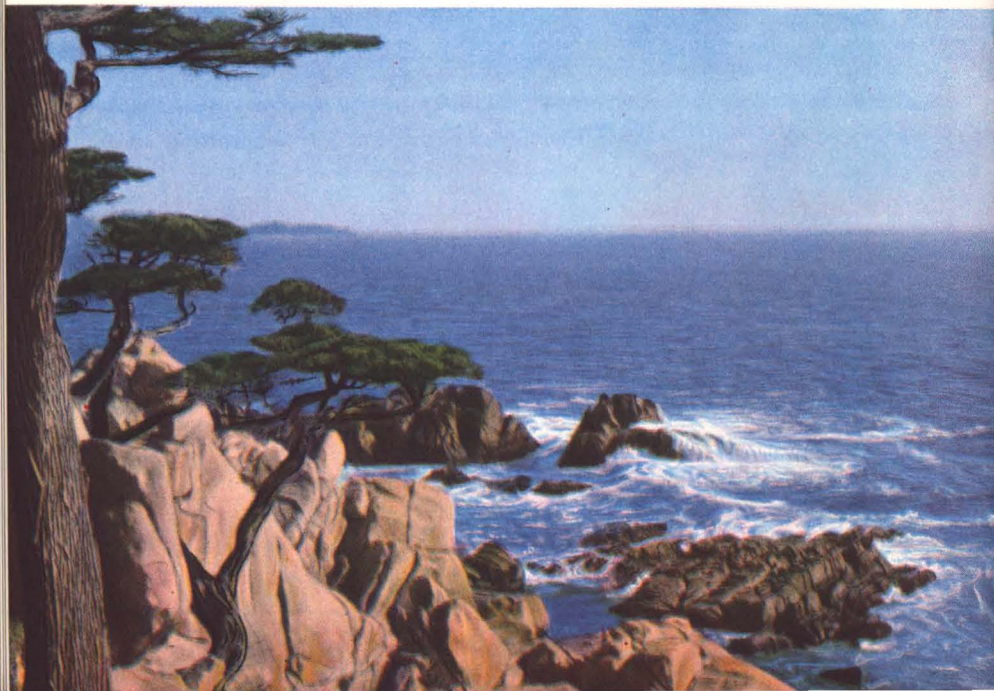
Lying just 125 miles south of San Francisco is Monterey and beautiful,



much-photographed Monterey Bay, which has been likened by many to the world-famous Bay of Naples

A little farther north you come to Palo Alto, home of Stanford University, from whence it is but a short distance to hospitable San Francisco.

Enchanting Monterey Coast





Breathtaking Golden Gate Bridge

Cosmopolitan

SAN FRANCISCO

From the time in 1769 when Gaspar de Portola discovered San Francisco Bay and camped on a site south of the present city, San Francisco has enjoyed a colorful career. It is, in truth, a colorful and cosmopolitan city and those who have enjoyed its hospitality and fine food long to return for further indulgence, while those who have only heard of this unmatched city, set their imaginations racing at the mere mention of her name. And no wonder!

At the tip of the forty-mile peninsula that walls the narrow channel of

the Golden Gate, San Francisco smiles down from its many hills, some of which are scaled by quaint cable cars. The majestic beauty of her two massive bridges, one of which spans the Golden Gate, being the longest single suspension span in the world—the other the far-flung San Francisco-Oakland Bay Bridge whose 8¼ miles of steel girder and cable connect these two bay cities—never fail to enthrall the visitor.

In certain quarters there is more than a suggestion of foreign cities. At one point you may be reminded of



Majestic Mt. Shasta, California



Fisherman's Wharf and famed Coit Tower, San Francisco



Paris, and not far away is world-famous Chinatown with strange Pagoda-like structures lining the streets. Oriental costume mingles with American and quaint Chinese patter may be heard on all sides. Windows of the shops are filled with expensive silks,

carved ivory, lacquer, teak, porcelain and strange Chinese food and delicacies. There is Fisherman's Wharf, where the sons of the sons of Italy tie up their fishing boats and where many fine restaurants specialize in deliciously fresh sea foods.



A strikingly beautiful mosaic graces the front of Memorial Chapel, Stanford University.

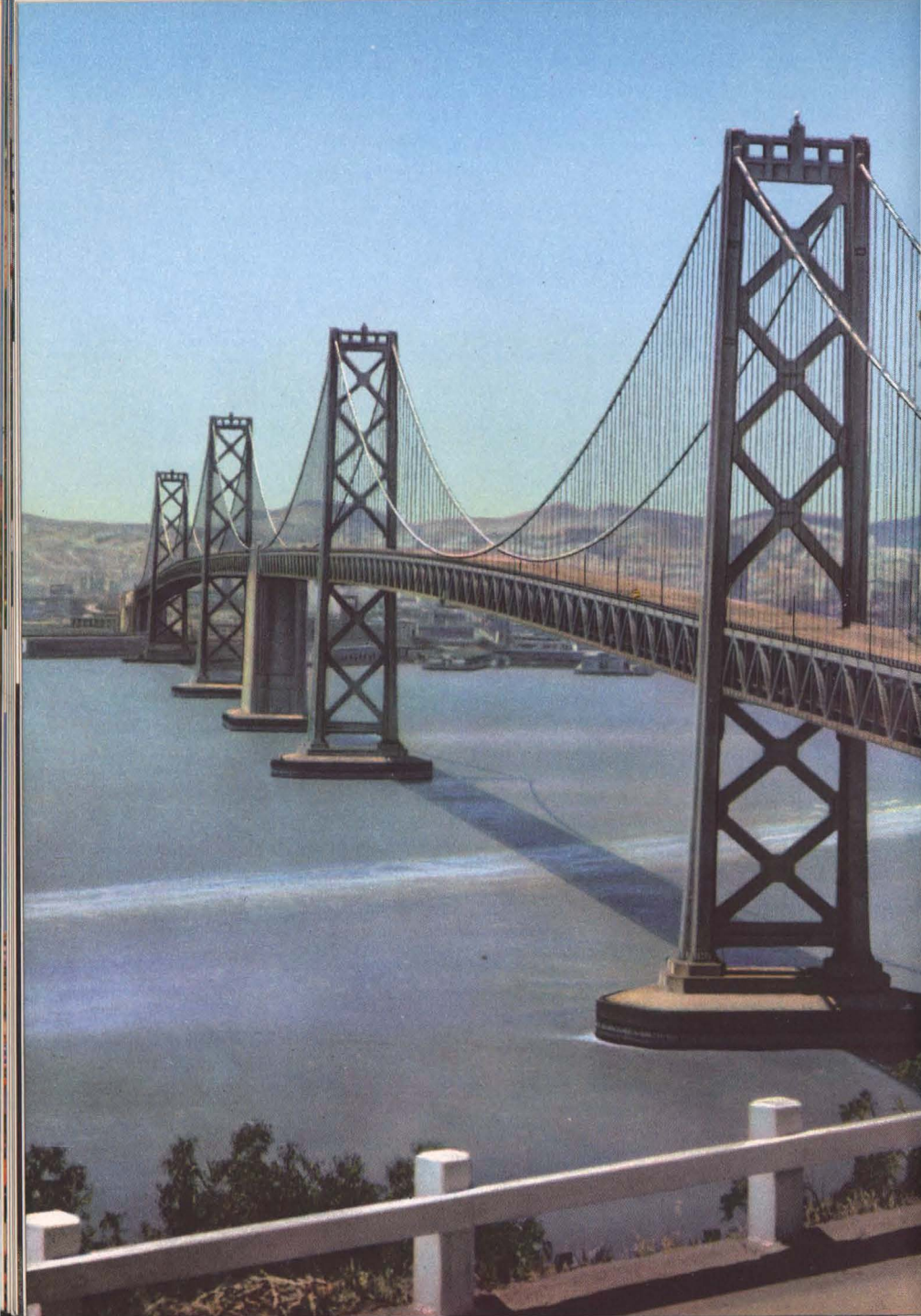


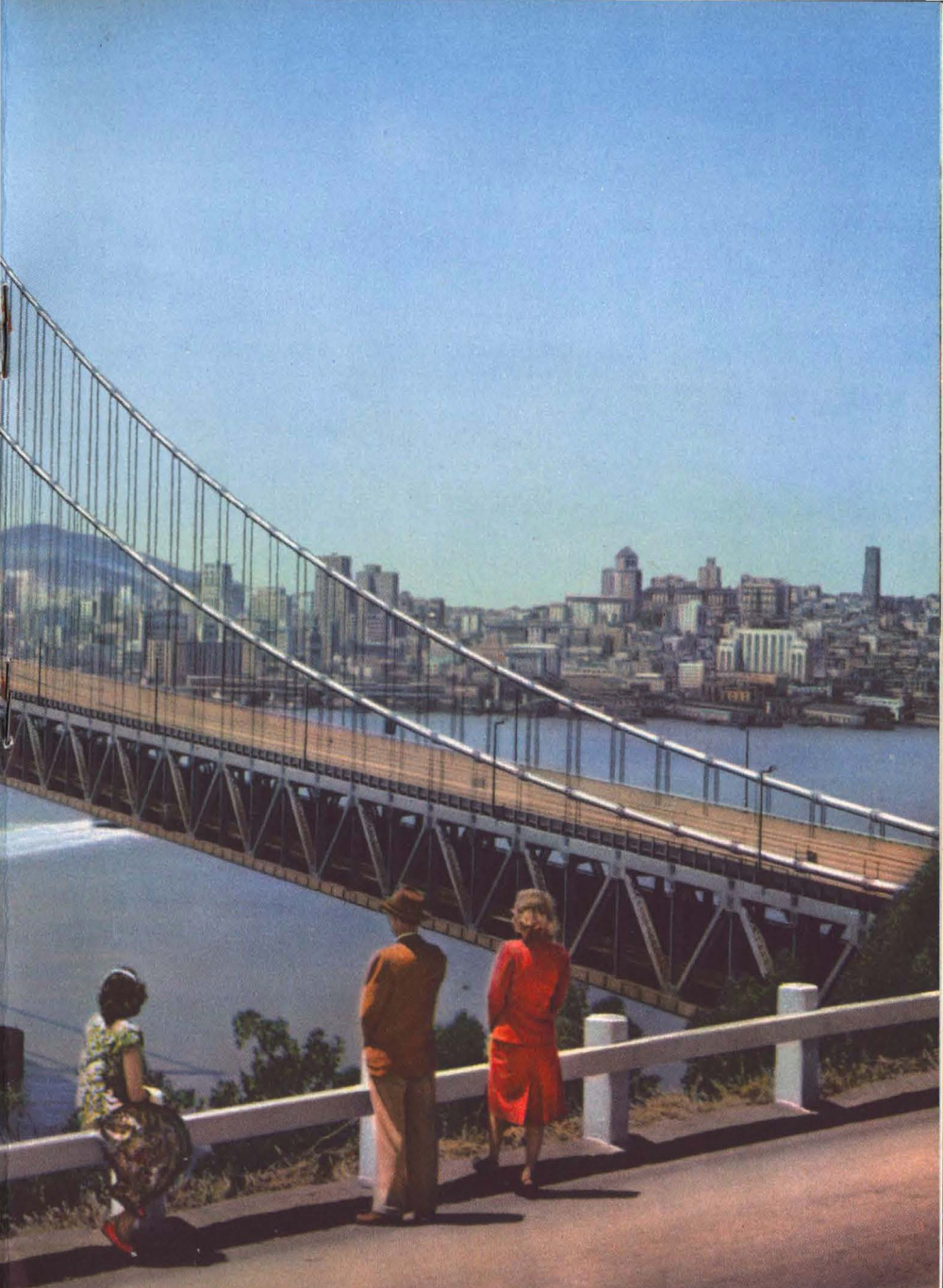
San Francisco has long been famous for its night life, and when the sun has settled into the bosom of the Pacific a new side of this fascinating city comes to life . . . dancing in smart metropolitan hotels and exotic night clubs; latest plays in legitimate theatres; first-run movies and vaudeville in the motion picture theatres; light opera, grand opera and symphony

music in season. San Francisco is famous for its fine food and the tastiest dishes of all nations are presented here to delight the gourmet.

The climate of San Francisco is exceptionally mild. The average in winter is 46° and in summer 65° . The sea air is refreshing and invigorating. Nights are always cool and an extra wrap is worn with comfort.

The attractions of the city and its surroundings are almost endless. Trips can be taken, for instance, to Mt. Tamalpais and Muir Woods; to Carmel and Monterey; to Palo Alto and to the other bay cities round about.





San Francisco-Oakland Bay Bridge



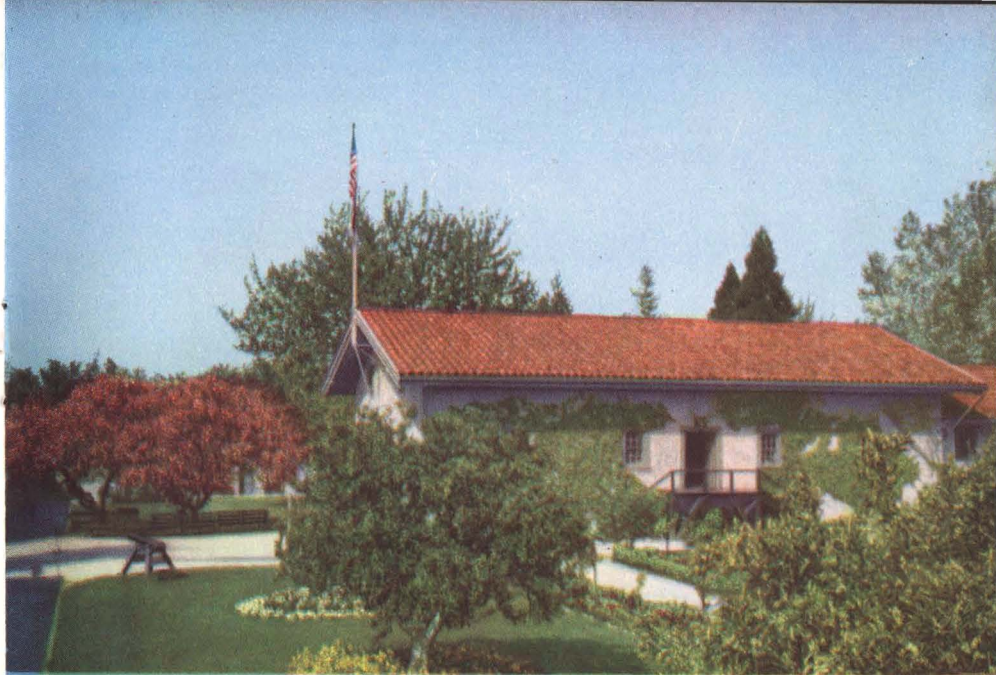
Alameda County Court House across Lake Merritt, Oakland

San Francisco has more than 100 parks, the most famous of which is Golden Gate Park covering 1,013 acres. Here is located M. H. De Young Memorial Museum, an anthropological, art and general museum containing thousands of exhibits, also Steinhart Aquarium, as well as Kezar Stadium where contests of nationwide interest are held. Close by is famous Fleishhacker Zoo.

Just across the bay is Oakland, a city of industry and of beautiful homes that overlook placid Lake Merritt. Near at hand are Berkeley, site of the University of California; Alameda, a garden city on an island; and Piedmont, another lovely suburban town.

Campanile, University of California campus





Sutter's Fort Museum, Sacramento



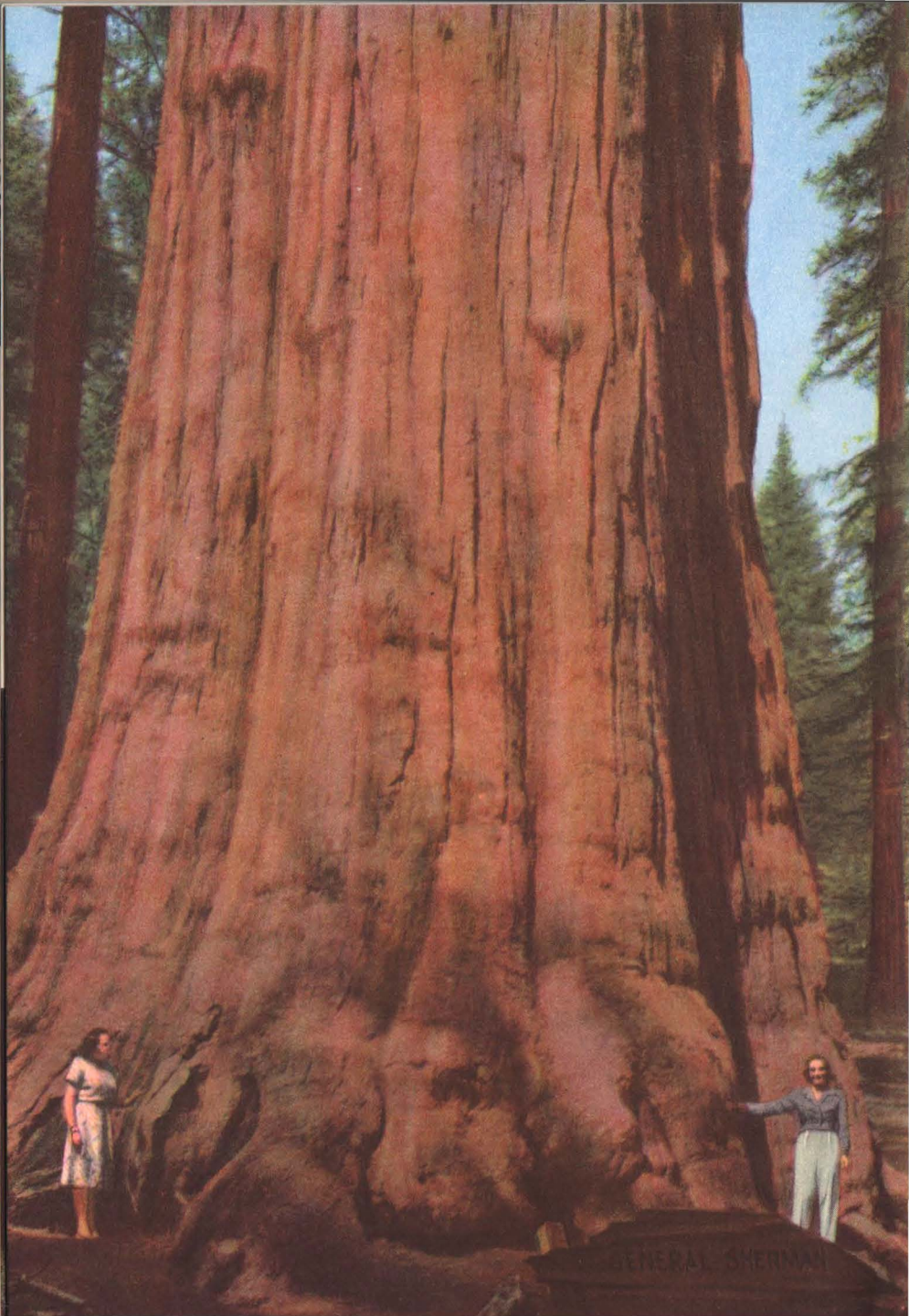
Historic

SACRAMENTO

A little to the northeast of San Francisco and the bay cities lies Sacramento, the historic capital of California. Here John Sutter, the Swiss adventurer, maintained a large establishment named "New Helvetia," and near here was found the gold that

started the famous migration of 1849. Sutter's Fort is now an interesting museum, open daily.

To the north lies a wonderland of woods and mountains, grain fields and vineyards, majestic Mt. Shasta, and the great Redwood Empire, a land of towering, massive Redwood trees that were old when Christ was born; also Lassen Volcanic National Park, which has the only active volcano in the United States.





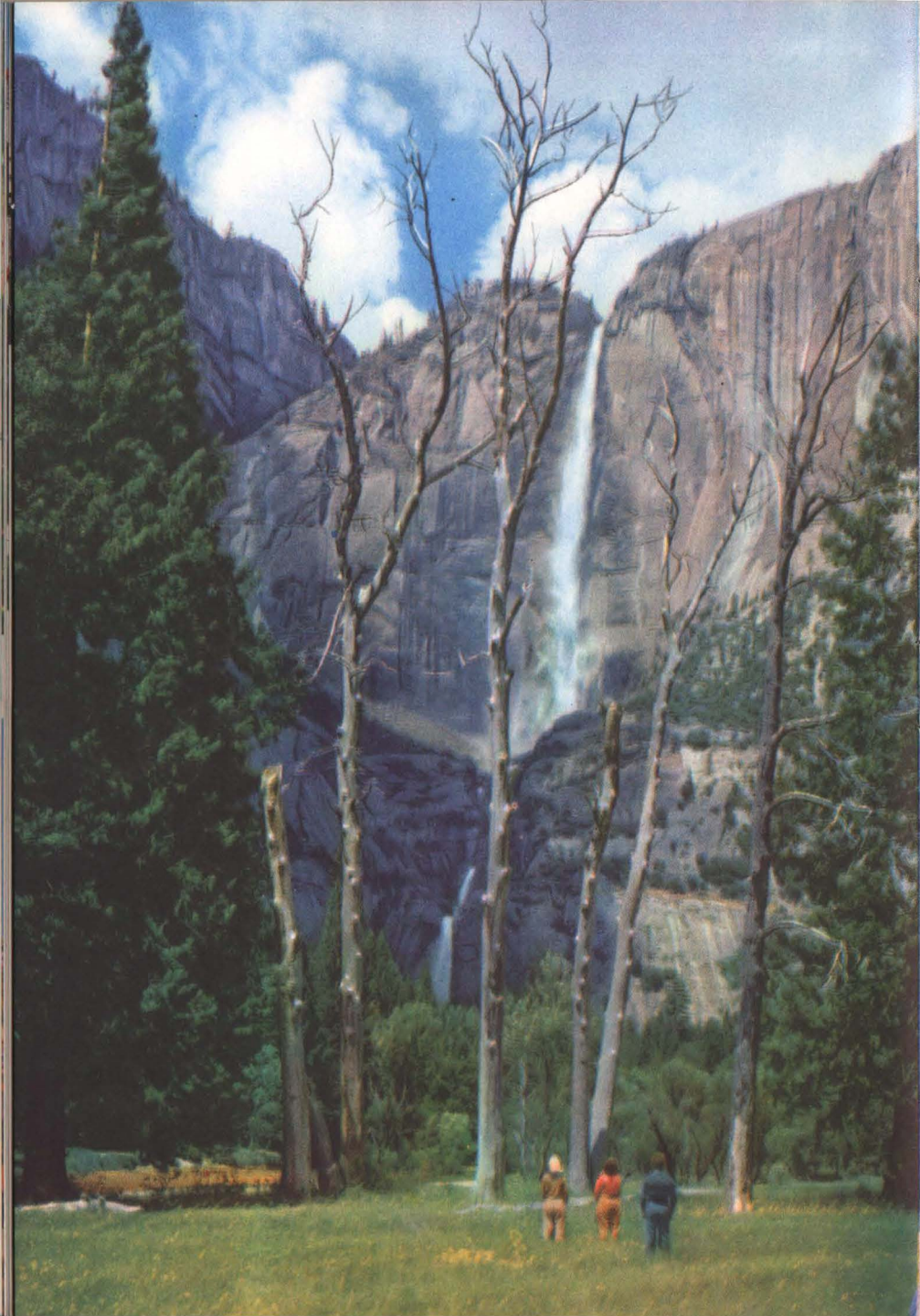
An impressive stand of big trees.

Big Trees

California is noted for its many stands of big trees—"Sequoia Gigantea" they are called. Particularly outstanding are the groves to be found in Kings Canyon National Park and adjoining Sequoia National Park, both of which lie just east of Fresno. Other fine stands are to be found in the Mariposa Grove and the Tuolumne Grove in Yosemite National Park.

In the Giant Forest of Sequoia National Park stands the General Sherman Tree, estimated to be between 3,000 and 4,000 years old, with a height of 272.4 feet and a base diameter of 36.5 feet. The General Grant Tree rears its mighty top 267 feet into the air and has a base diameter of 40.3 feet. To see the sunlight filtering diagonally down through a stand of these hoary giants is one of nature's most beautiful sights.

Kings Canyon and Sequoia National Parks may be conveniently visited on an inexpensive circle tour from Fresno.





Lovely, mountain-rimmed Lake Tahoe



Y O S E M I T E

Yosemite is one of our greatest National Parks. Its chief feature is its lovely green valley, overlooked by majestic granite domes, fringed by feathery waterfalls and stupendous cata-racts. It is an all-year playground drawing thousands of visitors summer and winter. During the latter season a complete snow and ice sports program is carried on. Offering complete hotel and camp accommodations, it is conveniently reached from Merced and Fresno.

*Yosemite Falls descends
in breath-taking beauty.*

L A K E T A H O E

In the lofty lap of the enchanting Sierra Nevada mountains, on the California-Nevada border, nestles Lake Tahoe, the largest fresh-water lake in California and one of the most alluring in the world. It is twenty-one miles long and twelve miles wide. Fine resorts line the shores of this sparkling blue mirror which is entirely surrounded by mountains. It is reached by a short side trip from Truckee, California, on the Overland Route.

On Your Way!

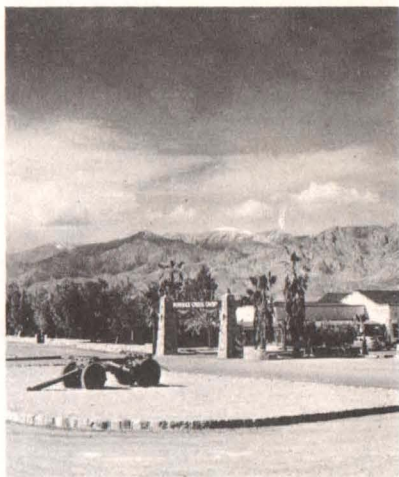
Keep in mind that traveling by rail gives you the opportunity to plan interesting side trips and stop-overs short of your main objective. Most of us make a long trip rather infrequently and should plan it so as to take in everything of real interest along the way.



DEATH VALLEY, CALIFORNIA

Once known as a land of desolation and tragedy, Death Valley, now a National Monument, is a popular winter resort, unequalled in the world. Lying in the southeastern corner of California and practically on the Nevada border, Death Valley offers a delightfully equable winter climate. Days are warm and sunny, nights cool, clear and invigorating.

From Dante's View at an elevation of 5,160 feet one looks down upon Bad Water, 280 feet below sea level, and then shifting the gaze to the north



Furnace Creek Camp, Death Valley

sees Mt. Whitney thrusting its rugged head into the sky a distance of 14,496 feet. There, within one sweep of the vision, are the lowest and highest points in the United States.

Furnace Creek Inn, a modern hotel, offers splendid accommodations, and Furnace Creek Ranch, a mile distant, offers dude ranch living.

Death Valley is easily reached on all-expense tours which operate during the winter months from Las Vegas, Nevada.

Below are briefly described two of the outstanding places of interest you may visit en route to or from California via Union Pacific. You will find the time and money expended very much worthwhile. Consider them well when planning your trip.



Gigantic Hoover Dam and Power Houses



L A S V E G A S ,
H O O V E R D A M ,
A N D L A K E M E A D

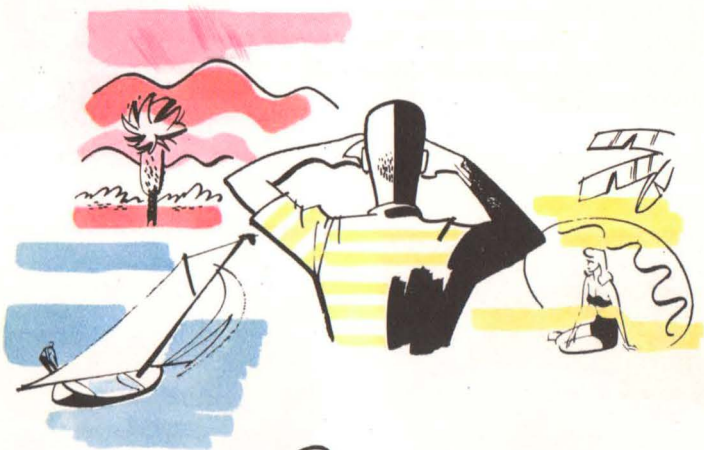
Traveling to or from Southern California via Union Pacific you pass through Las Vegas, Nevada, a care-free place, whose slogan is, "Still a Frontier Town." Gateway to the Hoover Dam-Lake Mead recreational area, which drew over one million visitors in 1947 Las Vegas is well worth a stop-over for a day or longer for the purpose of making the side trip to the Dam and to enjoy the gay, pleasure-



loving atmosphere of this modern "frontier" town.

Motor buses operate on regular schedules from Las Vegas to Boulder City and Hoover Dam, mighty bulwark which harnesses the turbulent Colorado River forming Lake Mead, and provides irrigation, flood control, and electric energy for a wide area.

All forms of water sports, fine bass fishing and boat trips on Lake Mead are among the recreational attractions.



Lights CAMERA!

California is a photogenic land. It offers the photographer a tremendous variety of subjects. Here are picturesque missions, seascapes, mountain views, waterfalls, big trees, eucalyptus and palm trees, a bit of Old Mexico, Chinatown, tremendous bridges and countless other types of scenery and subjects peculiar to this locality.

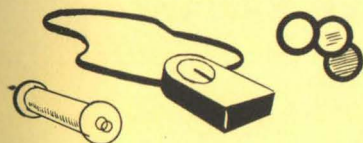
At most times of the year the light is crisp, clean and brilliant. In general an exposure meter is a recommended piece of equipment, for such a variety of subjects naturally calls for a variety of exposures—particularly if you are using color film.

Regardless of the intensity of sunlight, it should always be remembered that the exposure is largely determined by the key of the object to be photographed. Thus

low-key or dark objects; scenes with a lot of green trees or with shadow expanse, require more exposure. Beach scenes and scenes of high-key objects require correspondingly less exposure.

A slight atmospheric haze is often encountered in southern California. In color shots of landscapes the haze often lends added charm. In some cases where the haze produces a blue cast, which may be objectionable in color film, a haze filter or light ultraviolet filter will usually give sufficient correction.

For general black and white photography a panchromatic film is advisable. In many cases a light yellow filter will improve the tones in the picture, darken the sky and give a more harmonious relationship between all components of a picture. Where



a more dramatic effect is desired, an orange or red filter is indicated. The heavier filters are very useful at the beach or in cases where a white building, such as a mission, is outlined against the sky. Of course, the exposure must be increased to compensate for the filter used.

Since color film does not have much latitude, extreme care must be given that exposures are correct. Avoid, if you can, making color shots when the sun is high overhead, for at this time of day the best you can hope for, in most cases, is simply passable results. The morning hours and the afternoon hours — after, say, two or three o'clock—are best for color shooting. Avoid large areas of heavy shadow unless you have an idea of working up something dramatic. In general, a flat light, with the sun coming over your shoulder, will give best color results, although many striking pictures are made with quartering light. At times a back light produces beautiful pictures of some subjects late in the afternoon, if you know how to handle color film exposure under these difficult conditions.

Your questions about photography will be answered fully and completely if you will address Manager, Photographic Department, Union Pacific Railroad, 1416 Dodge Street, Omaha 2, Nebraska.



GETTING READY

Unless you plan an extensive visit, it is better to travel lightly. Also, take with you only one small bag with the clothes and toilet articles that you will need while on the train and check the others in baggage service. This will add greatly to your comfort en route.

Your wardrobe for summer or winter in California should be similar to that which you would wear at home or would require for a visit to most any other American resort. Sport clothes are worn more here than in most other places. Light wraps are needed for summer evenings. During the winter season your heavy cloth or fur coat will rarely be necessary during the daytime, but it will often be comfortable for evening wear. While there are many occasions when you may wish to wear formal evening dress, it is seldom required.

RELAXATION . . .

All the Way



Consider well the comfort and convenience of travel by train which provides many services and conveniences that other means simply do not offer. You ride in the perfect comfort of deep-cushioned, air-conditioned cars—cool and clean. You need not be concerned with the outside weather. Come heat or cold or snow or rain, you're safe from the elements and have not a care in the world. Warm in winter, cool in summer, you are contented and at ease throughout the trip.

Through the wide windows—at eye level—passes a soothing, ever-changing panorama that you can see and appreciate. Up ahead the engineer does the driving and gives you a smooth ride. Take a snooze if you wish . . .

there's a crisp white pillow for your head. Hungry? You don't have to wait 'till you reach an eating house, or balance a difficult tray on your knees. You can eat just about when and what you wish, and it is tasty, appetizing food, prepared by a trained staff, deftly served in a well-appointed dining car.

You can get up and move around whenever you wish. Large washrooms with toilet annex, also plenty of hot water, soap and towels on hand at all times, makes for general well-being and good living. Pleasant conversation with congenial fellow-travelers; a game of cards, or your favorite beverage are yours as the miles slip away. When night comes, there's sound, care-free sleep for all.



The daily Streamliner "City of Los Angeles."

"Meals That Appeal" are served in Streamliner dining cars.



The daily Streamliner "City of San Francisco"



The Streamliners "City of Los Angeles" and "City of San Francisco" provide fast, daily service between Chicago and California. Offering stewardess service, and the "last word" in luxurious comfort and fine appointments, they are the choice of discriminating travelers to and from California.

Relax in luxurious lounge cars





Streamliner coaches provide fast, comfortable transportation at low cost.

Lounge cars where refreshments are served also carry stationery, and a representative list of current magazines, and such cars may be found on many trains. Polite attendants to look after your hand luggage and serve your other needs add to the pleasure of travel by train. You may send and receive telegrams en route, or catch up on your correspondence or reading. Most trains today have radios so that you need not miss your favorite program or the latest spot news.

And when your final destination is reached you step off the train rested and refreshed, ready for business or pleasure as the case may be. Railroad stations are generally located near the heart of the city with plenty of local transportation passing the door to serve you.

Yes, travel by train offers many conveniences and comforts unmatched by others, and, when you go that way, every day of your trip pays dividends in rest and relaxation.

A Variety of

SERVICE

Streamliners



Limiteds



When you decide to go to California via Union Pacific you have made a wise choice. Union Pacific offers a variety of service and the choice of two different routes to California; one by way of Los Angeles, briefly described in this book—the other, called "The Overland Route," takes you due west from Ogden, across Great Salt Lake, through Reno, Nevada and Sacramento, California, direct to San Francisco.

Over their respective routes speed the luxurious, daily, extra fare Streamliners "City of Los Angeles," and "City of San Francisco" on fast schedules between Chicago and the cities for which they were named. They offer private room and open-section Pullmans, as well as coaches, dining cars, luxurious club-lounge cars and the most modern facilities for your comfort.

Then there's the popular "Los Angeles Limited" in daily service between Chicago and Los Angeles, and the "San Francisco Overland" between Chicago and San Francisco. These splendid trains provide sleeping-car and coach accommodations . . . radio-equipped lounge car . . . barber and valet service, and a wealth of present-day refinements.

The Streamliner "City of St. Louis" offers travelers from the South and Southeast a fast, daily schedule, with through cars from St. Louis-Kansas City to Los Angeles and San Francisco. This fine train operates from St. Louis to Cheyenne, Wyoming, where its through cars are placed in "The Utahn." The through cars to San Francisco are taken at Ogden by the "San Francisco Overland." There is no extra fare.

The famous "Pony Express," also,



Club-lounge car, a fine place to relax and enjoy traveling.



offers fast, through service from Kansas City to Los Angeles and San Francisco.

Other popular daily trains are the "Pacific" between Chicago and Los Angeles, and the "Gold Coast" be-



tween Chicago and San Francisco.

Union Pacific also offers through sleeping-car service, without change, from New York and Washington, D. C., to Los Angeles and San Francisco.

SUN VALLEY
IDAHO

OTHER REGIONS

YELLOWSTONE
NATIONAL PARK

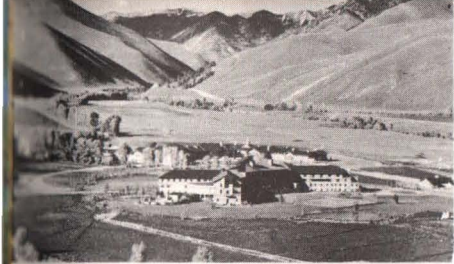
*Famous
Vacation-Lands
Served by the Union Pacific*

COLORADO

In selecting your route to California decide now to go Union Pacific which serves so many of the West's national parks and outstanding scenic and recreational areas. In this way for very little additional, and in some cases no extra rail fare, you can, if time permits, combine a trip to California with a never-to-be-forgotten visit to one or more of these outstanding attractions.

No other railroad directly serves so many of these places, so, when you travel to or from California via Union Pacific you can conveniently include one or more in your itinerary.





Here is America's outstanding year 'round sports center. Just a short side trip from Ogden or Salt Lake City, Sun Valley offers a complete program of winter as well as summer sports, also modern, inexpensive living accommodations.



Yellowstone offers more strange natural wonders than any similar region on earth. During the park season Union Pacific operates through sleepers from Chicago, as well as from Salt Lake City and Ogden, Utah, direct to the park entrance.



From the East mile-high Denver, gateway to the Colorado mountain wonderlands, can be included in your trip to California at no extra rail fare. Many thrilling trips into near-by mountain country, including Rocky Mountain National Park, originate in Denver.

PACIFIC NORTHWEST

A trip to the scenic and magnificent Pacific Northwest can easily be combined with a California trip at little added expense. Here is a vast, ever-green empire, dotted with snow-capped mountains, sparkling lakes and majestic waterfalls.

SOUTHERN UTAH- ARIZONA NATIONAL PARKS

Zion, Bryce Canyon, Grand Canyon National Parks, the Kaibab National Forest and Cedar Breaks National Monument are all visited on delightful motor bus trips from Cedar City, Utah, just a short side trip on your way to or from Southern California.

UNION PACIFIC TRAVEL OFFICES

GET EXPERT HELP WHEN PLANNING YOUR TRIP!

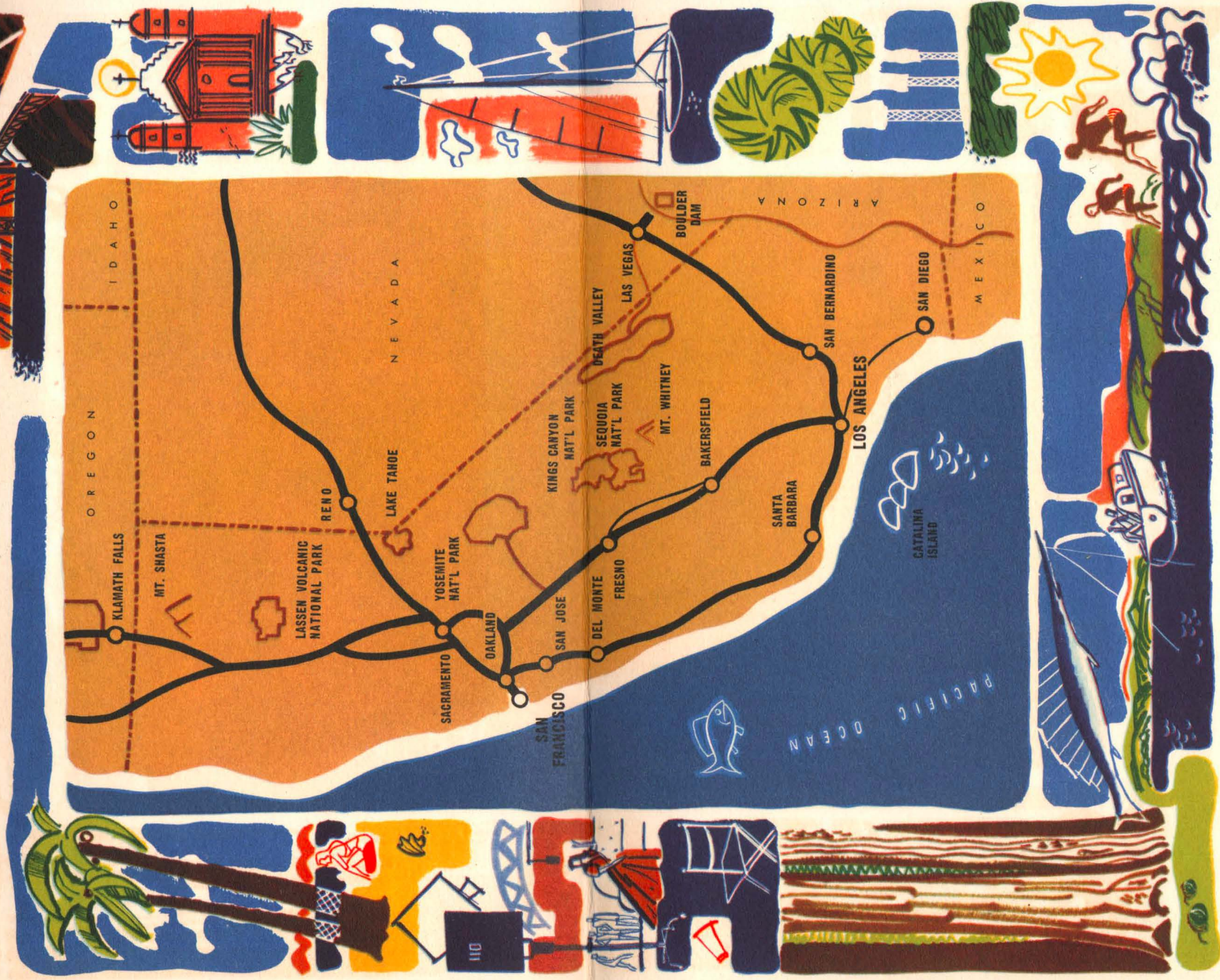
Aberdeen, Wash. 3 Union Pass. Station
Alhambra, Calif. 121 W. Main St.
Astoria, Ore. 116 Twelfth St.
Atlanta 3, Ga. 1232 Healey Building
Bend, Ore. 112 Oregon Ave.
Birmingham 3, Ala. 701 Brown-Marx Building
Boise, Idaho. Idaho Bldg., 212 North 8th Street
Boston 8, Mass. 294 Washington Street
Bremerton, Wash. 228 First St.
Butte, Mont. 609 Metals Bank Building
Cheyenne, Wyo. 120 West 16th Street
Chicago 3, Ill. 1 S. LaSalle Street
Cincinnati 2, Ohio. 303 Dixie Terminal Building
Cleveland 13, Ohio. 1407 Terminal Tower
Dallas 1, Texas. 2108 Mercantile Bank Building
Denver 2, Colo. 535 Seventeenth Street
Des Moines 9, Ia. 407 Equitable Building
Detroit 26, Mich. 612 Book Building
East Los Angeles, Calif. 5454 Ferguson Drive
Fresno 1, Calif. 207 Rowell Building
Glendale 3, Calif. 404½ North Brand Boulevard
Hollywood 28, Calif. 6702 Hollywood Blvd.
Huntington Park, Calif. 7002 Pacific Blvd.
Kansas City 6, Mo. 2 East Eleventh Street
Las Vegas, Nev. Union Pacific Station
Lewiston, Ida. Room 7, Union Depot
Lincoln 8, Nebr. 130 So. 13th Street
Long Beach 2, Calif. 144 Pine Avenue
Los Angeles 14, Calif. Union Pacific Building
Memphis 3, Tenn. 1720 Sterick Building
Milwaukee 3, Wis. 814 Warner Building
Minneapolis 2, Minn.
..... 890 Northwestern Bank Building

Any of our representatives at the offices listed will be glad to assist with all details of your trip, at no cost to you. Contact the one closest to you.

New Orleans 12, La. 504 Canal Building
New York 20, N. Y. Suite 350, Rockefeller Ctr.
Oakland 12, Calif. 215 Central Bank Building
Ogden, Utah. Ben Lomond Hotel Building
Omaha 2, Nebr.
..... Corner 15th & Dodge Sts. or 1614 Farnam St.
Pasadena 1, Calif. Union Pacific Station
Philadelphia 2, Pa. 904 Girard Trust Building
Pittsburgh 22, Pa. 1419 Oliver Building
Pomona, Calif. Union Pacific Station
Portland 5, Ore. 701 S.W. Washington Street
Reno, Nev. 118 W. 2nd Street
Riverside, Calif. Union Pacific Passenger Stn.
St. Joseph 2, Mo. 517 Francis Street
St. Louis 1, Mo. 1223 Ambassador Building
Sacramento 14, Calif. 217 Forum Building
Salt Lake City 1, Utah.
..... Hotel Utah, Main and So. Temple Sts.
San Diego 1, Calif. 320 Broadway
San Francisco 2, Calif. Geary at Powell Street
San Jose 7, Calif. 206 First National Bk. Bldg.
San Pedro, Calif. 805 South Pacific Avenue
Santa Ana, Calif. 305 North Main St.
Santa Monica, Calif. 307 Santa Monica Blvd.
Seattle 1, Wash. 1300 Fourth Avenue
Spokane 8, Wash. 727 Sprague Avenue
Stockton 6, Calif. 207 Don Burton Building
Tacoma 2, Wash. 114 So. Ninth Street
Toronto, Ontario. 201 Canadian Pacific Building
Tulsa 3, Okla. 823 Kennedy Building
Walla Walla, Wash. First National Bank Bldg.
Washington 5, D. C. 600 Shoreham Building
Yakima, Wash. Union Pacific Building

UNION PACIFIC RAILROAD

CALIFORNIA



Union Pacific also publishes books, similar to this, on the following regions: Colorado; Pacific Northwest-Alaska; Yellowstone-Grand Teton National Parks; Zion-Bryce Canyon-Grand Canyon National Parks, and Dude Ranches. Any or all of them may be had for the asking.

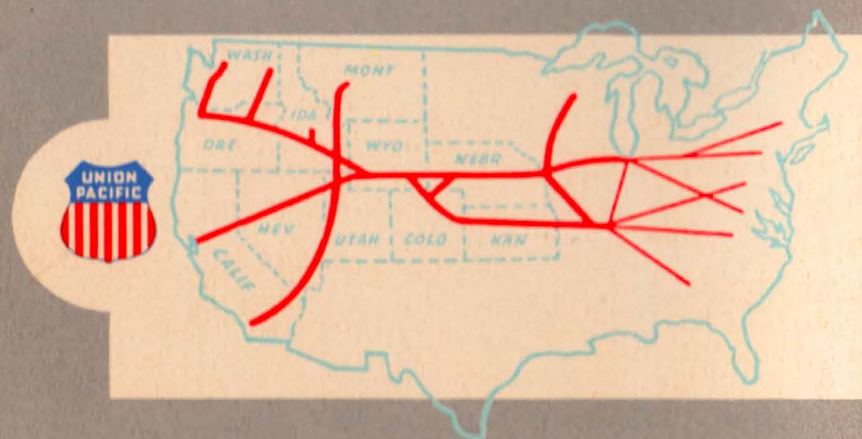


REGIONAL MAP

Union Pacific gratefully acknowledges the cooperation of the following who furnished photographs for reproduction in this book:

All Year Club of Southern California
Californians, Inc.
Los Angeles Chamber of Commerce
San Diego-California Club
Santa Barbara Chamber of Commerce
Redwood Empire Association
Pacific Pathways Magazine
Southern Pacific Co.
Frashers, Inc., Pomona, Cal.
Bryan-Branbenburg Co., Los Angeles
Padilla Studios, Los Angeles
Cy La Tour, Pasadena, California

THE SEASONED TRAVELER GOES BY TRAIN



FOR DEPENDABLE TRANSPORTATION

Be Specific... Say "UNION PACIFIC"