

RIO GRANDE DIVISION

STATIONS	Dist.	STATIONS	Dist.
No. 4	No. 6	No. 4	No. 6
El Paso	11.00	El Paso	11.00
Fort Worth	11.30	Fort Worth	11.30
Dallas	11.45	Dallas	11.45
St. Louis	12.15	St. Louis	12.15
Memphis	12.45	Memphis	12.45
Shreveport	13.15	Shreveport	13.15
New Orleans	13.45	New Orleans	13.45

RIO GRANDE DIVISION

STATIONS	Dist.	STATIONS	Dist.
No. 6	No. 4	No. 6	No. 4
New Orleans	13.45	New Orleans	13.45
Shreveport	13.15	Shreveport	13.15
Memphis	12.45	Memphis	12.45
St. Louis	12.15	St. Louis	12.15
Dallas	11.45	Dallas	11.45
Fort Worth	11.30	Fort Worth	11.30
El Paso	11.00	El Paso	11.00

NEW ORLEANS DIVISION

STATIONS	Dist.	STATIONS	Dist.
No. 4	No. 6	No. 4	No. 6
New Orleans	13.45	New Orleans	13.45
Shreveport	13.15	Shreveport	13.15
Memphis	12.45	Memphis	12.45
St. Louis	12.15	St. Louis	12.15
Dallas	11.45	Dallas	11.45
Fort Worth	11.30	Fort Worth	11.30
El Paso	11.00	El Paso	11.00

NEW ORLEANS DIVISION

STATIONS	Dist.	STATIONS	Dist.
No. 6	No. 4	No. 6	No. 4
New Orleans	13.45	New Orleans	13.45
Shreveport	13.15	Shreveport	13.15
Memphis	12.45	Memphis	12.45
St. Louis	12.15	St. Louis	12.15
Dallas	11.45	Dallas	11.45
Fort Worth	11.30	Fort Worth	11.30
El Paso	11.00	El Paso	11.00

NEW ORLEANS AND HOT SPRINGS LINE

STATIONS	Dist.	STATIONS	Dist.
No. 4	No. 6	No. 4	No. 6
New Orleans	13.45	New Orleans	13.45
Hot Springs	14.15	Hot Springs	14.15
St. Louis	12.15	St. Louis	12.15
Dallas	11.45	Dallas	11.45
Fort Worth	11.30	Fort Worth	11.30
El Paso	11.00	El Paso	11.00

NEW ORLEANS AND HOT SPRINGS LINE

STATIONS	Dist.	STATIONS	Dist.
No. 6	No. 4	No. 6	No. 4
New Orleans	13.45	New Orleans	13.45
Hot Springs	14.15	Hot Springs	14.15
St. Louis	12.15	St. Louis	12.15
Dallas	11.45	Dallas	11.45
Fort Worth	11.30	Fort Worth	11.30
El Paso	11.00	El Paso	11.00

KANSAS CITY, WATKINS & GULF R.V.

STATIONS	Dist.	STATIONS	Dist.
No. 4	No. 6	No. 4	No. 6
Kansas City	11.00	Kansas City	11.00
St. Louis	11.30	St. Louis	11.30
Memphis	12.00	Memphis	12.00
Shreveport	12.30	Shreveport	12.30
New Orleans	13.00	New Orleans	13.00

KANSAS CITY, WATKINS & GULF R.V.

STATIONS	Dist.	STATIONS	Dist.
No. 6	No. 4	No. 6	No. 4
New Orleans	13.00	New Orleans	13.00
Shreveport	12.30	Shreveport	12.30
Memphis	12.00	Memphis	12.00
St. Louis	11.30	St. Louis	11.30
Kansas City	11.00	Kansas City	11.00

PECOS VALLEY R.V. AND PECOS RIVER R. R.

STATIONS	Dist.	STATIONS	Dist.
No. 4	No. 6	No. 4	No. 6
El Paso	11.00	El Paso	11.00
Fort Worth	11.30	Fort Worth	11.30
Dallas	11.45	Dallas	11.45
St. Louis	12.15	St. Louis	12.15
Memphis	12.45	Memphis	12.45
Shreveport	13.15	Shreveport	13.15
New Orleans	13.45	New Orleans	13.45

PECOS VALLEY R.V. AND PECOS RIVER R. R.

STATIONS	Dist.	STATIONS	Dist.
No. 6	No. 4	No. 6	No. 4
New Orleans	13.45	New Orleans	13.45
Shreveport	13.15	Shreveport	13.15
Memphis	12.45	Memphis	12.45
St. Louis	12.15	St. Louis	12.15
Dallas	11.45	Dallas	11.45
Fort Worth	11.30	Fort Worth	11.30
El Paso	11.00	El Paso	11.00

ST. LOUIS, MEMPHIS, NEW ORLEANS AND SHREVEPORT TO THE WEST AND NORTHWEST

STATIONS	Dist.	STATIONS	Dist.
No. 4	No. 6	No. 4	No. 6
St. Louis	12.15	St. Louis	12.15
Memphis	12.45	Memphis	12.45
Shreveport	13.15	Shreveport	13.15
New Orleans	13.45	New Orleans	13.45
Dallas	11.45	Dallas	11.45
Fort Worth	11.30	Fort Worth	11.30
El Paso	11.00	El Paso	11.00

ST. LOUIS, MEMPHIS, NEW ORLEANS AND SHREVEPORT TO THE WEST AND NORTHWEST

STATIONS	Dist.	STATIONS	Dist.
No. 6	No. 4	No. 6	No. 4
New Orleans	13.45	New Orleans	13.45
Shreveport	13.15	Shreveport	13.15
Memphis	12.45	Memphis	12.45
St. Louis	12.15	St. Louis	12.15
Dallas	11.45	Dallas	11.45
Fort Worth	11.30	Fort Worth	11.30
El Paso	11.00	El Paso	11.00

4 IMPORTANT GATEWAYS. 4

WEST-BOUND. AUGUST, 1903.

THE TEXAS AND PACIFIC RAILWAY

NO TROUBLE TO ANSWER QUESTIONS.

THE SHORT LINE SHREVEPORT AND NEW ORLEANS

THE DIRECT THROUGH LINE ST. LOUIS AND MEMPHIS

TO ALL POINTS IN

NORTHERN TEXAS, COLORADO AND WEST CALIFORNIA

TO ALL POINTS IN

NORTHERN TEXAS, COLORADO AND WEST CALIFORNIA

WEST-BOUND. AUGUST, 1903.

THE TEXAS AND PACIFIC RAILWAY

NO TROUBLE TO ANSWER QUESTIONS.

THE SHORT LINE SHREVEPORT AND NEW ORLEANS

THE DIRECT THROUGH LINE ST. LOUIS AND MEMPHIS

TO ALL POINTS IN

NORTHERN TEXAS, COLORADO AND WEST CALIFORNIA

TO ALL POINTS IN

NORTHERN TEXAS, COLORADO AND WEST CALIFORNIA

MINERAL WELLS, TEX.
 (REACHED DIRECT VIA TEXAS & PACIFIC R.V.)

Mineral Wells, Tex., a charming little city, and known as "The Texas Health Resort," is situated at the western terminus of the Weatherford, Mineral Wells & Northwestern Railway, which connects with the Texas & Pacific Railway at Weatherford, Tex.

The altitude of Mineral Wells is 2600 feet, and the average winter temperature is 45 degrees Fahrenheit, the average summer temperature is 85 degrees. The prevailing winds are from the Gulf of Mexico, which render the nights cool and refreshing in summer, and moderate the cold of winter. The climate is unsurpassed, and as an all-the-year health resort it possesses great advantages than any other place in the United States.

Thousands of people have been cured of numerous ailments by the use of the waters of Mineral Wells, which are superior to those of any other health resort in the United States, and are fully equal to the world-famous waters of Carlsbad, in Austria. Dr. N. B. Kennedy, vice-president of the Texas Medical Association, has given the following testimonial as to the virtue of these waters:

"Elizanso, Tex., April 1st, 1896.—I have been visiting Mineral Wells since 1892, and take great pleasure in certifying to the wonderful efficacy of the waters of Mineral Wells, Tex., for the diseases for which they have been recommended, such as diabetes, Bright's disease (in its incipient), gout, dyspepsia, rheumatism, sciatica, neuralgia, insomnia and all nervous affections, morbid and whiskey habits and constipation, and especially efficacious in all female diseases. I have visited Wooten Wells, Tex., Hot Springs, Ark., and Topo Chico Hot Springs, Monterrey, Mex., and I unhesitatingly declare the waters of Mineral Wells to be vastly superior to any of them."

The present population of Mineral Wells is about 2,000. The hotels furnish home comforts at moderate prices. The new Hexagon Hotel is provided with steam heat, electric lights, bath rooms and all modern improvements. The bathing establishments are fitted up with all the modern conveniences, with polite attendants. The medical profession is represented in Mineral Wells by several eminent physicians who have state reputations for their skill as practitioners. Good hunting and fishing may be had in the vicinity of Mineral Wells, and the walks and drives are picturesque and the near-by mountains adding to the romantic attractiveness of the city.

Sandstone abounds about the city, which is largely used in the erection of business houses. Mineral Wells has a system of water works, two strong banking institutions, a roller mill and two cotton gins, well-equipped fire department and unsurpassed public schools.

There are one daily and two weekly newspapers, well edited and ably managed. The various religious denominations have handsome church buildings, and the secret societies are well represented and are fully furnished lodge rooms. The mercantile establishments of Mineral Wells are on a substantial basis and do a large trade with the tributary country.

For any further information desired, address

E. P. TURNER,
 GEN'L PASS'G. AND TICKET AGT., DALLAS, TEX.

(No trouble to answer questions.)

EL PASO, TEX. (REACHED DIRECT VIA THE TEXAS & PACIFIC RAILWAY.)

The climatic conditions all conspire to make this city an ideal health resort. Its altitude is 5,700 feet above sea level. The temperature is mild, the latitude and altitude combined give a mild winter climate. Cyclones, strokes and diseases are unknown. The air is exceptionally dry and pure. The nights are always cool, producing a marked extent the purity of the atmosphere as noted here. In winter the thermometer rarely ever marks below twenty degrees, and only a very few days during the winter does it show below the freezing point. The average of cloudy days, according to official service reports, is less than three days per month, or less than ten per cent. It is practically continuous sunshine. The cures that have been effected are very many, and some of them remarkable. Sufferers from pulmonary troubles especially find great relief here, and those who are suffering from rheumatism, sciatica, neuralgia, and other ailments find relief here. The climate is so favorable in good health, who declare that had they not come to this genial climate they would have died long ago or continued to drag out a miserable existence. The altitude, while high enough to be pure and bracing, is not high enough to embarrass the heart's action.

In 1880 El Paso had a population of less than 500; in 1890, 10,000, and in 1898, 15,000. Back of El Paso is the Rio Grande, the largest river in the United States. El Paso holds the key to the situation of the Rio Grande to be about 20,000. El Paso holds the key to the situation of the Rio Grande to be about 20,000. El Paso holds the key to the situation of the Rio Grande to be about 20,000.

St. Paul and Minneapolis are to the Northwest, and Denver to the West. El Paso is destined to be to the Southwest.

For any further information desired, address

E. P. TURNER,
 GEN'L PASS'G. AND TICKET AGT., DALLAS, TEX.

(No trouble to answer questions.)

CONDENSED TIME NORTH-BOUND BETWEEN TEX. & PAC. AND ST. L. I. M. & S. RY LOCAL POINTS, AND VICE VERSA.

Express Daily	Express Daily	Express Daily	STATIONS	ROUTE	Express Daily	Express Daily	Express Daily
5:30	6:00	6:30	El Paso	St. Louis	7:30	8:00	8:30
11:30	12:00	12:30	Fort Worth	St. Louis	1:30	2:00	2:30
1:30	2:00	2:30	Dallas	St. Louis	3:30	4:00	4:30
3:30	4:00	4:30	St. Louis	St. Louis	5:30	6:00	6:30
6:30	7:00	7:30	St. Louis	St. Louis	8:30	9:00	9:30
9:30	10:00	10:30	St. Louis	St. Louis	11:30	12:00	12:30

CONDENSED TIME SOUTH-BOUND BETWEEN ST. L. I. M. & S. RY LOCAL POINTS, AND VICE VERSA.

Express Daily	Express Daily	Express Daily	STATIONS	ROUTE	Express Daily	Express Daily	Express Daily
8:30	9:00	9:30	St. Louis	St. Louis	10:30	11:00	11:30
11:30	12:00	12:30	St. Louis	St. Louis	1:30	2:00	2:30
1:30	2:00	2:30	St. Louis	St. Louis	3:30	4:00	4:30
3:30	4:00	4:30	St. Louis	St. Louis	5:30	6:00	6:30
6:30	7:00	7:30	St. Louis	St. Louis	8:30	9:00	9:30
9:30	10:00	10:30	St. Louis	St. Louis	11:30	12:00	12:30

INDEX TO FOLDER.

Baggage Regulations, point cover to the West and Northwest, via El Paso, Fort Worth and Dallas, 8
 Condensed time to the West and Northwest, via El Paso, Fort Worth and Dallas, 8
 Condensed time to Texas Points, 11
 Condensed time between St. L. I. M. & S. R. and T. & P. local points, 11
 Condensed time between New Orleans and St. Louis, 15
 Advertisements, 15
 Through Car Service, 15
 List of General and Traveling Agents, 15
 New Orleans and Hot Springs Line, 15
 Condensed time between St. Louis and Texas Points, 15
 Pecos Valley R.V., 17

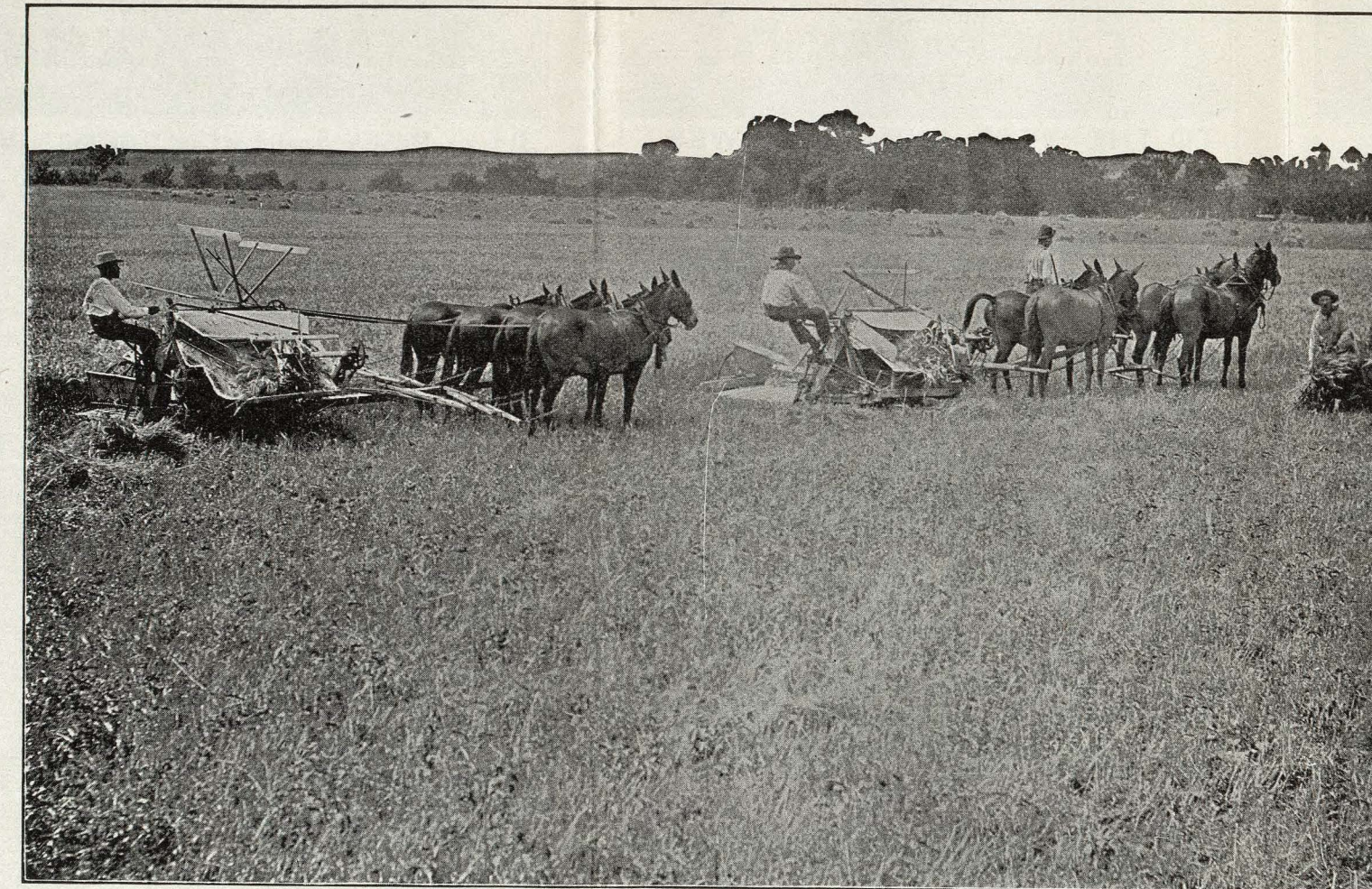
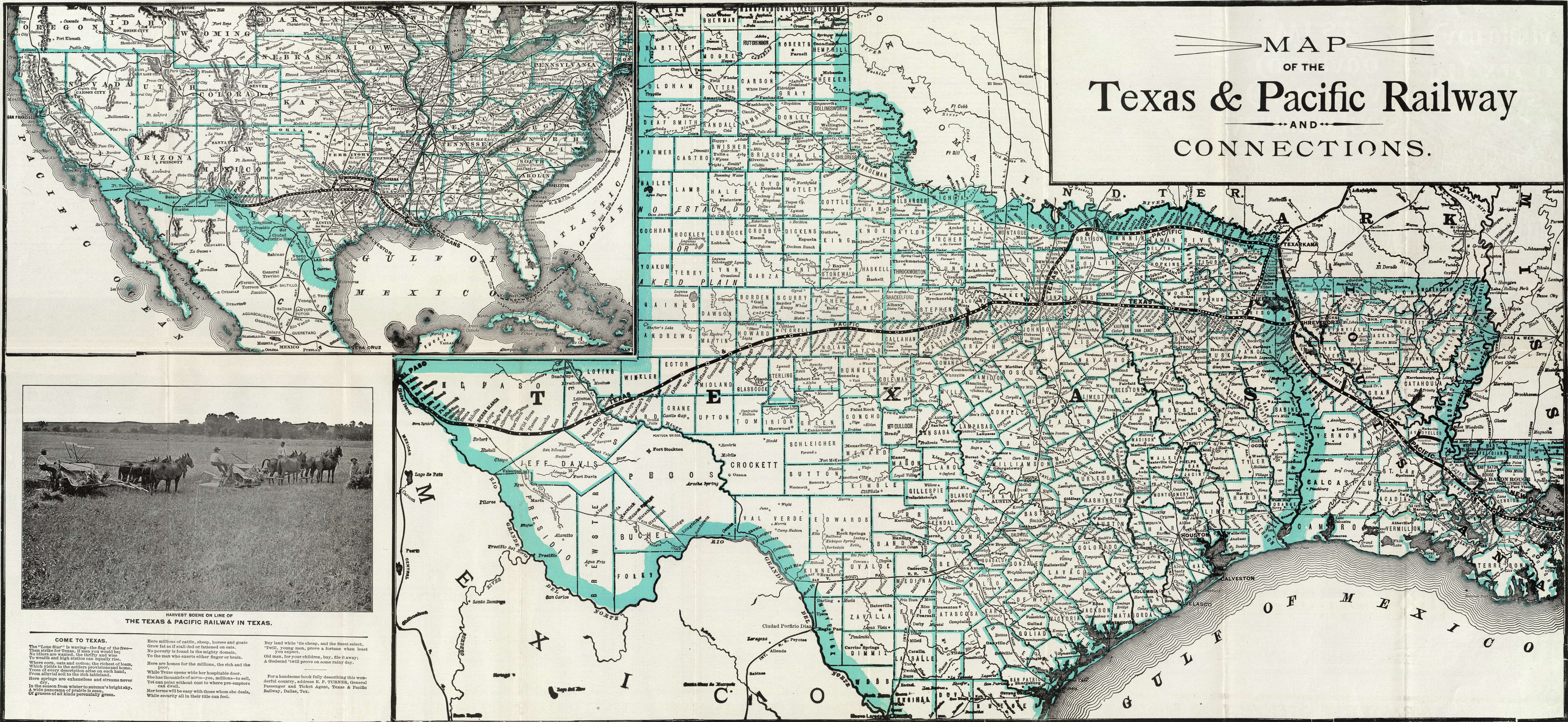
FULL INFORMATION

In regard to tickets, rates, routes, connections, will be furnished; copies of folders, time tables, etc., sent; reservations in sleeping cars made; and the general comfort of passengers looked after, on application to any of the gentlemen named below:

DALLAS, TEX.
 C. P. FEGAN, Assistant General Passenger and Ticket Agent.
 R. H. CARINGTON, Eastern Passenger Agent, 335 Broadway.
 LOS ANGELES, CAL.
 T. D. CONNELLY, General Agent, 230 S. Spring St.
 T. P. FITZGERALD, District Passenger Agent, 114 Adams St.
 TIMOTHY HENRY, District Passenger Agent, 114 Adams St.
 SAN FRANCISCO, CAL.
 W. J. SHOTWELL, Gen'l Agent, D. & G. R. E., 625 Market St.
 EL PASO, TEX.
 R. W. CURTIS, Southwest Passenger Agent.
 L. G. LEONARD, Eastern Passenger Agent.
 PITTSBURGH, PA.
 JNO. B. JAMES, Central Passenger Agent, 905 Park Building.
 CHICAGO, ILL.
 BISSELL WILSON, Dist. Pass'g. Agt., Mo. Pac. Ry., 111 Adams St.
 MILWAUKEE, WIS.
 L. D. KNOWLES, Gen'l Agent, Mo. Pac. Ry., 114 Wisconsin St.
 BIRMINGHAM, ALA.
 C. H. MORGAN, Traveling Passenger Agent.
 LOUISVILLE, KY.
 R. T. G. MATTHEWS, Traveling Passenger Agent, Room 202 Equitable Building.
 INDIANAPOLIS, IND.
 A. A. DEANE, Jr., Traveling Passenger Agent.
 CHATTANOOGA, TENN.
 I. E. REHLANDER, Traveling Passenger Agent, 16 East 8th St.
 MEMPHIS, TENN.
 J. P. PANMILL, Traveling Passenger Agent, 314 Main Street.
 DETROIT, MICH.
 H. D. ARMSTRONG, Trav. Passenger Agent, 7 W. Fort Street.
 CINCINNATI, OHIO.
 A. A. GALLAGHER, District Passenger Agent, 419 Walnut St.
 ATLANTA, GA.
 J. H. WORD, Southeastern Passenger Agent, No. 8 Perry Hotel.
 NEW ORLEANS, LA.
 A. S. GRAM, Passenger and Ticket Agent, St. Charles Hotel.
 J. K. WALKER, City Passenger Agent, St. Charles Hotel.
 DALLAS, TEX.
 CHARLES T. GRAY, City Ticket Agent, 370 Main Street.
 FORT WORTH, TEX.
 H. P. HUGHES, Traveling Passenger Agent, Sixth and Main Streets.
 J. F. ZUKN, City Ticket Agent, Sixth and Main Streets.
 ST. LOUIS, MO.
 L. S. THORNE, E. P. TURNER, VICE-PRES. AND GEN'L MGR., GEN'L PASS'G. AND TICKET AGT., DALLAS, TEX.

The True Southern Route to and from California is via El Paso and the Texas & Pacific Railway.

MAP OF THE Texas & Pacific Railway AND CONNECTIONS.



HARVEST SCENE ON LINE OF THE TEXAS & PACIFIC RAILWAY IN TEXAS.

COME TO TEXAS.

The "Lone Star" is waving—the flag of the free—then strikes for Texas, if men you would be; No idlers are wanted, the thrifty and wise to wealth and high station can equally rise. Where corn, oats and cotton; the richest of loam, Trees of every description arise on each hand, From alluvial soil to the rich tabularland. Here springs are exhaustless and streams never dry. In the season from winter to autumn's bright sky, A wide panorama of prairie is seen, Of grasses of all kinds perennially green.

Here millions of cattle, sheep, horses and goats "Twirl, young men, prove a fortune when least you expect. No poverty is found in the mighty domain, To the man who exerts either finger or brain.

Here are homes for the millions, the rich and the poor. While Texas opens wide her hospitable door. She has thousands of acres—yes, millions—to sell, Yet can point without boast to where pre-emptors can dwell.

Her terms will be easy with those whom she deals, While security all in their title can foil.

Buy land while 'tis cheap, and the finest select, Grow fat as if stall-fed or fattened on oats. Old man, for your children, buy, file it away; A Godsend 'twill prove on some rainy day.

For a handsome book fully describing this wonderful country, address E. P. TURNER, General Passenger and Ticket Agent, Texas & Pacific Railway, Dallas, Tex.