

VACATIONING? GO SEABOARD!



*Travel in luxury
aboard the....*

- Silver Meteor
- Silver Star
- Silver Comet
- Gulf Wind
- Sunland
- Palmland



The Route of

**COURTEOUS
SERVICE**



ENJOY YOUR TRIP . . .

The pleasant way to travel is by SEABOARD — of course! There is so much to see and do as you speed safely and comfortably over the Route of Courteous Service.

From the moment you are welcomed aboard the Silver Streamliners, you'll appreciate the personalized service extended by specially trained, smartly uniformed Registered Nurses, Passenger Service Agents and others.

Aboard the Streamliners you have room to roam — so many things to do! In the companionable Tavern Car there's fun for all . . . tempting refreshments, a game of cards. Perhaps you would prefer to relax in the Club-like Lounge or Observation with your favorite magazine, or chat with your fellow-traveler while enjoying panoramic views.

Complete relaxation and comfort are yours in deep-cushioned, individual, reclining seats of Seaboard Streamliner coaches . . . reserved in advance, just for you.

By Pullman, you'll have a wide choice of accommodations ranging from berths to a variety of private rooms. Especially attractive are the Roomettes and Bedrooms, which have complete lavatory facilities, finger-tip control of ventilation and lights, ample space for luggage and other modern appointments.

And of course, everyone looks forward to a meal in the Dining Car, be it a light snack or a full course dinner. Combine the genial hospitality of Seaboard Stewards, the deft service of its waiters, and the culinary skill of its chefs, and you will experience an adventure in fine eating, long to be remembered.



GO COACH... GO PULLMAN...



SEABOARD
AIR LINE RAILROAD

THROUGH TRAIN SCHEDULES

Between New York, Washington, Virginia, the Carolinas, Georgia, Alabama, and Florida

THE SILVER STAR

	10:00PM	Lv Boston (South Sta.) (EST)	NYNH&H	Ar	7:40PM
DIESEL POWERED	9:30AM	Lv New York (Penna. Sta.) (EST)	PRR	Ar	c 1:45PM
	10:57AM	Lv North Philadelphia	"	Ar	c12:17PM
	11:07AM	Lv Philadelphia (30th St. Sta.)	"	Ar	c12:07PM
	11:34AM	Lv Wilmington	"	Ar	c11:37AM
	12:35PM	Lv Baltimore	"	Ar	c10:36AM
	1:50PM	Lv Washington	RF&P	Ar	9:20AM
	4:27PM	Lv Richmond (Main St. Sta.)	SAL	Ar	6:40AM
	4:53PM	Lv Petersburg	"	Ar	g 6:04AM
	7:03PM	Lv Raleigh	"	Ar	3:45AM
	10:48PM	Lv Columbia	"	Ar	12:01AM
	L 1:08AM	Lv West Savannah	"	Lv	
		Lv Savannah (Union Sta.)	"	Lv	9:40PM
	3:30AM	Lv Jacksonville	"	Lv	7:20PM
	5:55AM	Lv Wildwood (Homosassa Springs)	"	Lv	4:55PM
G 7:07AM	Lv Winter Haven (Cypress Gardens)	"	Lv	C 3:38PM	
G 7:19AM	Lv W. Lake Wales-Lake Wales (Bok Tower)	"	Lv	C 3:29PM	
G 7:52AM	Lv Sebring (Highlands Hammock State Park)	"	Lv	C 3:00PM	
9:22AM	Lv West Palm Beach-Palm Beach	"	Lv	1:27PM	
11:06AM	Lv Ft. Lauderdale	"	Lv	Q12:41PM	
11:00AM	Lv Miami	"	Lv	12:05PM	
<i>Connections at Jacksonville with Nos. 7 and 8</i>					
	8:45AM	Lv Jacksonville	SAL	Ar	6:55PM
	11:25AM	Lv Wildwood (Homosassa Springs)	"	Ar	4:15PM
	1:30PM	Lv Tampa	"	Lv	2:10PM

THE SILVER METEOR

	7:30AM	Lv Boston (South Sta.) (EST)	NYNH&H	Ar	4:00PM
DIESEL POWERED	d 1:55PM	Lv New York (Penna. Sta.) (EST)	PRR	Ar	d10:30AM
	d 3:35PM	Lv Philadelphia (30th St. Sta.)	"	Ar	d 8:46AM
	d 4:06PM	Lv Wilmington	"	Ar	d 8:15AM
	d 5:08PM	Lv Baltimore	"	Ar	d 7:13AM
	d 6:10PM	Lv Washington	RF&P	Ar	d 6:10AM
	g 8:48PM	Lv Richmond (Main St. Sta.)	SAL	Ar	g 3:30AM
	g 9:14PM	Lv Petersburg	"	Ar	g 2:55AM
	11:30PM	Lv Raleigh	"	Ar	12:35AM
	3:17AM	Lv Columbia	"	Ar	8:45PM
	5:45AM	Lv Savannah (Union Station)	"	Lv	6:23PM
	H 6:54AM	Lv Thalmann (Brunswick-Sea Island)	"	Lv	H 5:10PM
	8:15AM	Lv Jacksonville	"	Lv	4:00PM
	18:46AM	Lv Baldwin	"	Lv	1:44AM
	9:20AM	Lv Waldo (Gainesville)	"	Lv	2:48PM
10:30AM	Lv Wildwood (Homosassa Springs)	"	Lv	1:40PM	
11:40AM	Lv Winter Haven (Cypress Gardens)	"	Lv	Q12:25PM	
11:51AM	Lv W. Lake Wales-Lake Wales (Bok Tower)	"	Lv	12:16PM	
12:27PM	Lv Sebring (Highlands Hammock State Park)	"	Lv	11:44AM	
2:00PM	Lv West Palm Beach-Palm Beach	"	Lv	10:19AM	
2:48PM	Lv Fort Lauderdale	"	Lv	9:34AM	
3:35PM	Lv Miami	"	Lv	9:00AM	
12:40PM	Lv Tampa	SAL	Lv	11:30AM	
1:44PM	Lv Clearwater (Belleview Biltmore Hotel)	"	Lv	10:20AM	
2:30PM	Lv St. Petersburg	"	Lv	9:45AM	
1:55PM	Lv Tampa	SAL	Lv	11:05AM	
4:10PM	Lv Sarasota	"	Lv	9:05AM	
4:55PM	Lv Venice	"	Lv	8:20AM	
2:00PM	Lv Tampa	TTT BUS	Ar	7:40AM	
5:40PM	Lv Fort Myers	"	Lv	4:00AM	

THE SUNLAND

	3:15PM	Lv Washington (EST)	RF&P	Ar	1:50PM
	6:12PM	Lv Richmond (Main St. Sta.)	SAL	Ar	10:45AM
	6:42PM	Lv Petersburg	"	Ar	10:20AM
DIESEL POWERED	4:10PM	Lv Norfolk	Ferry	Ar	12:40PM
	4:30PM	Lv Portsmouth	SAL	Ar	12:25PM
	7:45PM	Lv Norfolk	"	Lv	9:00AM
	8:10PM	Lv Norfolk	SAL	Ar	8:57AM
	9:25PM	Lv Raleigh	"	Ar	7:35AM
	10:13PM	Lv Sanford	"	Ar	6:47AM
	10:43PM	Lv Southern Pines (Pinehurst)	"	Ar	6:17AM
	1:07AM	Lv Camden	"	Ar	3:35AM
	1:50AM	Lv Columbia	"	Ar	2:48AM
	5:00AM	Lv Savannah (Union Station)	"	Lv	11:45PM
	7:50AM	Lv Jacksonville	"	Lv	9:00PM
	8:45AM	Lv Jacksonville	"	Ar	6:55PM
	11:15AM	Lv Wildwood (Homosassa Springs)	"	Lv	4:30PM
	1:30PM	Lv Tampa	"	Lv	2:10PM
<i>Connections at Jacksonville with Nos. 57 and 22</i>					
	8:27AM	Lv Jacksonville	SAL	Ar	7:05PM
	2:00PM	Lv West Palm Beach-Palm Beach	"	Ar	1:27PM
	3:35PM	Lv Miami	"	Lv	12:05PM

THE SILVER COMET

	7:30AM	Lv Boston (South Sta.) (EST)	NYNH&H	Ar	7:40PM
DIESEL POWERED	c12:40PM	Lv New York (Penna. Sta.) (EST)	PRR	Ar	c 1:45PM
	c 2:18PM	Lv Philadelphia (30th St. Sta.)	"	Ar	c12:07PM
	c 2:46PM	Lv Wilmington	"	Ar	c11:37AM
	c 3:46PM	Lv Baltimore	"	Ar	c10:36AM
	5:00PM	Lv Washington	RF&P	Ar	9:25AM
	7:43PM	Lv Richmond (Main St. Sta.)	SAL	Ar	6:50AM
	N 8:09PM	Lv Petersburg	"	Ar	N 6:14AM
	10:30PM	Lv Raleigh	"	Ar	3:55AM
	12:15AM	Lv Hamlet	"	Lv	2:15AM
	V 4:10PM	Lv Norfolk	Ferry	Ar	V12:40PM
	V 4:30PM	Lv Portsmouth	SAL	Ar	V12:25PM
	V 8:10PM	Lv Norfolk	"	Ar	V 8:57AM
	V 8:29PM	Lv Henderson	"	Ar	V 8:31AM
	V 9:25PM	Lv Raleigh	"	Ar	V 7:35AM
V10:13PM	Lv Sanford	"	Lv	V 6:47AM	
V10:43PM	Lv Southern Pines (Pinehurst)	"	Lv	V 6:17AM	
V11:20PM	Lv Hamlet	"	Lv	V 5:45AM	
12:30AM	Lv Hamlet	"	Ar	2:00AM	
1:38AM	Lv Monroe	"	Lv	12:51AM	
n 4:03AM	Lv Greenwood	"	Lv	n10:30PM	
5:45AM	Lv Athens	"	Lv	8:48PM	
a 6:55AM	Lv Emory University	"	Lv	a 7:37PM	
7:15AM	Lv Atlanta	"	Lv	7:10PM	
7:40AM	Lv Atlanta	"	Ar	6:50PM	
h 8:58AM	Lv Rockmart	"	Ar	h 5:37PM	
h 9:15AM	Lv Cedartown (EST)	"	Lv	h 5:21PM	
10:45AM	Lv Birmingham (CST)	"	Lv	2:00PM	

THE PALMLAND

	2:00PM	Lv Boston (South Sta.) (EST)	NYNH&H	Ar	2:45PM
DIESEL POWERED	7:30PM	Lv New York (Penna. Sta.) (EST)	PRR	Ar	9:15AM
	9:07PM	Lv Philadelphia (30th St. Sta.)	"	Ar	7:31AM
	9:38PM	Lv Wilmington	"	Ar	6:55AM
	10:40PM	Lv Baltimore	"	Ar	5:50AM
	12:05AM	Lv Washington	RF&P	Ar	i 4:00AM
	3:05AM	Lv Richmond (Main St. Sta.)	SAL	Ar	12:45AM
	3:36AM	Lv Petersburg	"	Ar	12:10AM
	6:35AM	Lv Raleigh	"	Ar	8:50PM
	7:58AM	Lv Southern Pines (Pinehurst)	"	Lv	7:20PM
	11:05AM	Lv Camden	"	Lv	4:27PM
	12:05PM	Lv Columbia	"	Lv	3:40PM
	4:25PM	Lv Savannah (Union Station)	"	Lv	11:55AM
	6:17PM	Lv Thalmann (Brunswick-Sea Island)	"	Lv	10:07AM
	8:10PM	Lv Jacksonville	"	Lv	8:30AM
1:15AM	Lv Wildwood (Homosassa Springs)	"	Lv	3:00AM	
3:16AM	Lv Winter Haven (Cypress Gardens)	"	Lv	1:01AM	
3:30AM	Lv W. Lake Wales-Lake Wales (Bok Tower)	"	Lv	12:50AM	
6:30AM	Lv West Palm Beach-Palm Beach	"	Lv	10:25PM	
7:28AM	Lv Fort Lauderdale	"	Lv	9:28PM	
8:30AM	Lv Miami	"	Lv	8:45PM	
10:00PM	Lv Jacksonville	SAL	Ar	7:00AM	
i 5:45AM	Lv Tampa	"	Lv	10:30PM	
w 8:35AM	Lv Sarasota	TTT BUS	Lv	w 8:05PM	
w 9:15AM	Lv Venice	"	Lv	w 7:15PM	
w10:40AM	Lv Fort Myers	"	Lv	w 6:00PM	
11:20AM	Lv Boca Grande	SAL	Lv	3:10PM	

THE GULF WIND

	5:00PM	Lv Jacksonville (EST)	SAL	Ar	9:00AM
	8:25PM	Lv Baldwin	"	Ar	f 8:25AM
	12:30AM	Lv Tallahassee	"	Lv	5:40AM
	1:40AM	Lv Pensacola (CST)	L&N	Lv	11:39PM
	3:25AM	Lv Flomaton	"	Lv	10:30PM
	7:10AM	Lv Mobile	"	Lv	8:45PM
		Lv New Orleans	"	Lv	5:00PM

CROSS FLORIDA SERVICE

DAILY TRAINS					
10:30PM	8:40AM	Lv St. Petersburg (EST)	SAL	Ar	3:20PM
11:06PM	9:40AM	Lv Tampa	"	Ar	2:20PM
6:30AM	10:20AM	Lv Plant City	"	Ar	1:40PM
7:28AM	2:00PM	Lv West Palm Beach-Palm Beach	"	Lv	10:19AM
8:30AM	2:48PM	Lv Fort Lauderdale	"	Lv	9:34AM
	3:35PM	Lv Miami	"	Lv	9:00AM
					i 5:45AM
					4:56AM
					10:25PM
					9:28PM
					8:45PM

For complete details of Seaboard's Cross State Florida Service, See Table 7, Page 23;
 Jacksonville - Pensacola - New Orleans Service, Table 8, Page 23;
 Local Service to Atlanta and Birmingham, Table 11, Pages 32-33.

Explanation of Characters, 41-42—Equipment, Pages 9-10. Details Showing Additional Stops, Pages 15-34. Index to Time Tables and Other Services, Pages 11-14.

PASSENGER CARRYING EQUIPMENT OF THROUGH MAIN LINE AND LOCAL TRAINS

THE SILVER STAR

Nos. 21 and 22

	Designation		Line No.	(Coach Seats Reserved)
	S.B.	N.B.		
P&B Dormitory (18 Recl. Seats)	1-E	1-E		Washington-Miami.
Coach (52 Recl. Seats)	2-E	2-E		New York-Miami.
Coach (52 Recl. Seats)	3-E	3-E		New York-Miami.
Coach (52 Recl. Seats)	4-E	4-E		New York-Miami.
Tav. Coach (24 Recl. Seats)	5-E	5-E		Washington-Miami.
SAL Dining Car				Washington-Miami.
10 Rmte., 6 Dbr.	R-355	B-40	6911	Washington-Miami.
10 Rmte., 6 Dbr.	S-110	B-41	6905	New York-Miami.
10 Sec. Lounge	S-111	B-42	6769	New York-Miami.

THE SILVER METEOR

Nos. 57-157 and 158-58

	Designation		Line No.	(Coach Seats Reserved)
	S.B.	N.B.		
Baggage Dormitory Car				New York-Miami.
Coach (52 Recl. Seats)	11-E	11-E		New York-Miami.
10 Rmte., 6 Dbr.	S-102	B-51	6900	New York-Miami.
10 Rmte., 6 Dbr.	S-103	B-52	6900	New York-Miami.
6 Dbr. Buff. Lounge	S-104	B-53	6907	New York-Miami.
Reclining Seat P&B Car				Wildwood-St. Petersburg.
10 Rmte., 6 Dbr.	S-105	B-48	6901	New York-Sarasota-Venice.
10 Rmte., 6 Dbr.	S-106	B-59	6902	New York-St. Petersburg.
10 Rmte., 6 Dbr.	S-107	B-58	6902	New York-St. Petersburg.
SAL Dining Car				New York-St. Petersburg.
Coach (52 Recl. Seats)	18-W	18-W		New York-St. Petersburg.
Coach (52 Recl. Seats)	19-W	19-W		New York-St. Petersburg.
Coach (52 Recl. Seats)	20-W	20-W		New York-St. Petersburg.
(S.B., Fri., Sat., Sun.; N.B., Thur., Fri., Sat.)				
SAL Dining Car				New York-Miami.
Coach (52 Recl. Seats)	12-E	12-E		New York-Miami.
Coach (52 Recl. Seats)	13-E	13-E		New York-Miami.
Coach (52 Recl. Seats)	14-E	14-E		New York-Miami.
Tavern Observation				New York-Miami.

THE SUNLAND

Nos. 7 and 8

	Designation		Line No.	
	S.B.	N.B.		
Baggage Car				Washington-Tampa.
Coach				Washington-Tampa.
Coach				Washington-Tampa.
Coach				Portsmouth-Norlina.
Coach				Tampa-Sarasota-Venice.
SAL Dining Car				Washington-Hamlet.
SAL Parlor Dining Car				Jacksonville-Wildwood.
6 Sec., 6 Dbr.	R-360	B-112	2722	Washington-Jacksonville.
8 Sec., 5 Dbr.	B-17	B-18	6702	Portsmouth-Tampa.
Coach (52 Recl. Seats)	28-B	28-B		(SEE NOTE) Portsmouth-Atlanta.
8 Sec., 5 Dbr.	B-3	B-4	6777	(SEE NOTE) Portsmouth-Atlanta.

NOTE—Handled on Trains 33 and 34 between Hamlet and Atlanta.

THE SILVER COMET

Nos. 33 and 34

	Designation		Line No.	(Coach Seats Reserved)
	S.B.	N.B.		
Baggage Dormitory Car				New York-Birmingham.
Coach (52 Recl. Seats)	22-B	22-B		New York-Birmingham.
Coach (52 Recl. Seats)	28-B	28-B		(SEE NOTE) Portsmouth-Atlanta.
8 Sec., 5 Dbr.	B-3	B-4	6777	(SEE NOTE) Portsmouth-Atlanta.
10 Rmte., 6 Dbr.	R-365	B-70	6906	Washington-Atlanta.
10 Sec., 1 Dr., 2 Cpt.	R-366	B-71	2737	Washington-Birmingham.
10 Rmte., 6 Dbr.	S-119	B-72	6903	New York-Birmingham.
10 Sec., Lounge	S-120	B-74	6773	New York-Birmingham.
SAL Dining Car				New York-Birmingham.
Coach (52 Recl. Seats)	23-B	23-B		New York-Birmingham.
Coach (52 Recl. Seats)	24-B	24-B		New York-Birmingham.
Coach (52 Recl. Seats)	25-B	25-B		New York-Birmingham.
Tavern Observation				(Fri., Sat., Sun. only.) New York-Birmingham.

NOTE—Handled on Trains 7 and 8 between Norlina and Hamlet.

THE PALMLAND

Nos. 9-1 and 2-10

	Designation		Line No.	
	S.B.	N.B.		
Baggage Car				Washington-Miami.
Coach				New York-Miami.
Coach				New York-Miami.
Coach				Tampa-Wildwood-Miami.
Passenger and Baggage Car				Wildwood-Tampa.
Coach				New York-Tampa.
Coach				Tampa-Port Boca Grande.
Dining Car, Lounge				New York-Washington.
SAL Dining Car				Raleigh-Jacksonville.
8 Sec., 1 Dr., 3 Dbr.	S-116	B-63	2707	New York-Southern Pines-Hamlet.
10 Sec., Lounge	R-350	B-81	2703	Washington-Hamlet.
8 Sec., 1 Dr., 3 Dbr.	S-117	B-122	2701	New York-Miami.
10 Sec., 1 Dr., 2 Cpt.	T	T	2738	Jacksonville-Tampa.
10 Sec., 1 Dr., 2 Cpt.	CS-2	CS-2	6700	Tampa-Wildwood-Miami.

THE GULF WIND

Nos. 38 and 39

	Designation		Line No.	
	W.B.	E.B.		
Passenger and Baggage Car				Jacksonville-Flomaton.
Reclining Seat Coach				Jacksonville-New Orleans.
6 Sec., 6 Dbr.	B-1	L-12	3241	Jacksonville-New Orleans.
10 Sec., Buff. Lounge	B-2	L-11	3227	Jacksonville-New Orleans.
SAL Dining Car				Jacksonville-Tallahassee.

THE COTTON BLOSSOM

Nos. 5 and 6

Passenger and Baggage Car	Washington-Birmingham.
Coach	Washington-Birmingham.

PASSENGER, MAIL AND EXPRESS

Nos. 3-11 and 12-4

Passenger and Baggage Car	Washington-Hamlet.
Passenger and Baggage Car	Hamlet-Atlanta.
Coach	Washington-Hamlet.
Coach	Hamlet-Atlanta.

PASSENGER, MAIL AND EXPRESS—Nos. 36-37

Baggage Car	Jacksonville-Flomaton.
Coaches	Jacksonville-Flomaton.

TRAVELERS AID workers are at many of the railroad stations ready to assist inexperienced and unprotected travelers and all those in trouble away from home. Look for the TRAVELERS AID lamp, or ask station personnel where to find TRAVELERS AID.

SCHEDULES BETWEEN EASTERN CITIES AND FLORIDA THROUGH VIRGINIA, THE CAROLINAS AND GEORGIA

(Continued)

Read Down				Miles from Richmond	TABLE 2		Read Up						
9	57-157	7	21		Daily Trains	Eastern Standard Time	10	158-58	22	8			
AM 9 20	AM 1 22	PM 11 45	PM 9 00	253.8	Lv Hamlet.....	N. C.	Ar	PM 6 10	PM 10 42	AM 1 55	AM 5 25		
f 9 39	---	---	---	260.7	" Osborne.....	---	Lv	---	---	---	---		
9 55	---	z12 07	---	269.6	" Wallace.....	S. C.	---	f 5 45	---	---	---		
f10 15	---	---	---	270.8	PEE DEE RIVER						---	---	
10 31	---	---	---	272.0	" Cheraw.....	---	---	5 34	---	---	4 45		
f10 43	---	---	---	276.9	" Kimberly.....	---	---	f 5 16	---	---	---		
f10 52	---	---	---	285.2	" Patrick.....	---	---	f 5 00	---	---	4 13		
f11 02	---	---	---	300.4	" McBee.....	---	---	f 4 50	---	---	f 4 04		
11 09	---	1 07	F 10 13	307.2	" Bethune.....	---	---	f 4 42	---	---	---		
---	---	---	---	313.3	" Cassatt.....	---	---	f 4 35	---	---	---		
---	---	---	---	320.0	" Shephard.....	---	---	4 27	F 9 20	---	3 35		
---	---	---	---	326.8	" Camden.....	---	---	---	---	---	---		
---	---	---	---	328.8	WATEREE RIVER						---	---	
---	---	---	---	330.8	" Lugoff.....	---	---	f 4 16	---	---	---		
---	---	---	---	330.8	" Blaney.....	---	---	f 4 06	---	---	---		
---	---	---	---	339.4	" Pontiac.....	---	---	f 3 58	---	---	---		
---	---	---	---	344.4	" COLUMBIA.....	---	Lv	f 3 50	8 45	12 01	2 48		
---	3 17	1 50	10 48	359.7	" COLUMBIA.....	---	Ar	3 20	8 40	11 55	2 30		
12 05	3 22	2 10	10 53	359.7	CONGAREE RIVER						---	---	
12 35	---	---	---	361.2	" Cayce.....	---	---	---	---	---	---		
---	---	---	---	361.7	" Dixiana.....	---	---	f 3 07	---	---	---		
---	---	---	---	366.7	" Gaston.....	---	---	f 2 57	---	---	---		
---	---	---	---	375.0	" Swansea.....	---	---	f 2 48	---	---	---		
---	---	---	---	380.8	" Woodford.....	---	---	f 2 41	---	---	---		
---	---	---	---	386.1	" North.....	NORTH EDISTO RIVER						---	---
---	---	---	---	386.1	" Livingston.....	---	---	f 2 28	---	---	---		
---	---	---	---	393.7	" Neece.....	---	---	f 2 13	---	---	---		
---	---	---	---	394.4	" Norway.....	SOUTH EDISTO RIVER						---	---
---	---	---	---	394.4	" Denmark.....	---	---	2 02	---	---	1 25		
---	---	3 07	---	401.7	" Govan.....	---	---	f 1 50	---	---	---		
---	---	---	---	405.7	" Olar.....	---	---	f 1 40	---	---	---		
---	---	---	---	410.3	" Schofield.....	---	---	f 1 38	---	---	---		
---	---	---	---	417.6	" Ulmers.....	---	---	f 1 32	---	---	---		
---	---	---	---	420.7	" Sycamore.....	---	---	f 1 23	---	---	---		
---	---	---	---	424.2	" Fairfax.....	---	---	f 1 16	---	---	---		
---	---	---	---	426.7	" Gifford.....	---	---	1 06	---	---	---		
---	---	---	---	430.8	" Luray.....	---	---	f 12 47	---	---	---		
---	---	---	---	436.4	" Estill.....	---	---	---	---	---	---		
---	---	---	---	443.1	" Scotia.....	SAVANNAH RIVER						---	---
---	---	---	---	446.4	" Garnett.....	S.C.	---	---	---	---	---		
---	---	---	---	450.5	" Clyn.....	GA.	---	f 12 35	---	---	---		
---	---	---	---	455.6	" Stillwell.....	---	---	f 12 25	---	---	---		
---	---	---	---	460.7	" Rincon.....	---	---	f 12 19	---	---	---		
---	---	---	---	465.5	" West Savannah.....	---	---	---	---	---	---		
---	---	---	---	469.1	Ar SAVANNAH.....	---	Lv	11 55	6 23	9 40	11 45		
---	---	---	---	476.7	Lv SAVANNAH.....	---	Ar	11 40	6 18	9 35	11 30		
---	---	---	---	482.5	OGEECHEE RIVER						---	---	
---	---	---	---	500.6	" Richmond Hill.....	---	---	f 11 14	---	---	---		
---	---	---	---	500.6	" Dorchester.....	---	---	f 11 01	---	---	---		
---	---	---	---	515.6	" Riceboro.....	---	---	f 10 54	---	---	---		
---	---	---	---	517.0	" Jones.....	---	---	f 10 44	---	---	---		
---	---	---	---	528.7	" Warsaw.....	---	---	f 10 40	---	---	---		
---	---	---	---	533.3	" Townsend.....	---	---	f 10 36	---	---	---		
---	---	---	---	540.6	" Cox.....	---	---	f 10 26	---	---	---		
---	---	---	---	543.7	ALTAMAHA RIVER						---	---	
---	---	---	---	547.6	" Everett.....	---	---	10 18	---	---	---		
---	---	---	---	554.0	" Thalmann (Brunswick Jct.).....	---	---	10 07	H 5 10	H 8 29	10 14		
---	H 6 54	6 15	H 2 10	557.1	" Waverly.....	---	---	f 9 51	---	---	---		
---	---	---	---	560.3	" White Oak.....	---	---	f 9 45	---	---	---		
---	---	---	---	567.9	SATILLA RIVER						---	---	
---	---	---	---	582.3	" Woodbine.....	---	---	f 9 38	---	---	---		
---	---	---	---	586.1	" Kingsland.....	GA.	---	9 24	---	---	---		
---	---	---	---	590.1	ST. MARY'S RIVER						---	---	
---	---	---	---	590.6	Ar Gross.....	FLA.	Lv	---	---	---	---		
---	---	---	---	602.4	Lv Gross.....	---	---	---	---	---	---		
---	---	---	---	606.3	Ar Callahan.....	---	---	---	---	---	---		
---	---	---	---	608.9	Ar Baldwin.....	---	---	---	---	---	---		
---	---	---	---	608.9	Jv Gross.....	---	---	---	---	---	---		
---	---	---	---	615.5	Ar Yulee.....	---	---	9 05	---	---	f 9 30		
---	---	---	---	627.6	Ar Fernandina.....	(SAL BUS)	---	rr 8 20	---	---	rr 6 40		
---	---	---	---	627.6	Lv Fernandina.....	(SAL BUS)	---	rr 9 45	---	---	---		
---	---	---	---	615.5	Jv Yulee.....	---	---	9 05	---	---	f 9 30		
---	---	---	---	639.6	Ar JACKSONVILLE.....	---	---	8 30	4 00	7 20	9 00		
---	---	---	---	0.0	Lv JACKSONVILLE.....	---	---	---	---	---	---		
---	---	---	---	58.8	Ar Lake City.....	---	---	9 00	---	6 30	---		
---	---	---	---	81.0	Ar Live Oak.....	---	---	7 36	---	4 31	---		
---	---	---	---	109.4	Ar Madison.....	---	---	7 13	---	4 05	---		
---	---	---	---	165.0	Ar TALLAHASSEE.....	---	---	6 40	---	3 25	---		
---	---	---	---	189.0	Ar Quincy.....	---	---	5 40	---	2 00	---		
---	---	---	---	207.6	Ar CHATTAHOOCHEE.....	---	---	4 58	---	1 17	---		
---	---	---	---	368.6	Ar PENSACOLA (CST).....	(L&N)	---	4 35	---	12 50	---		
---	---	---	---	412.6	Ar Flomaton.....	---	---	11 39	---	6 30	---		
---	---	---	---	462.6	Ar Mobile.....	---	---	10 30	---	4 30	---		
---	---	---	---	612.6	Ar NEW ORLEANS.....	---	---	8 45	---	2 45	---		
---	---	---	---	---	---	---	---	5 00	---	11 00	---		

Characters explained on pages 41-42; Equipment on pages 9-10, 34

ASK ABOUT The Nation-Wide RAIL-AUTO PLAN

FOR
Vacation and Business
Travelers

You can enjoy the comfort, speed and safety of travel by rail without foregoing the convenience of your personal car at your destination. . . When you buy your rail ticket the Seaboard agent will assist in making arrangements for a Drive-ur-Self car to be at your disposal on arrival. . . The cost is reasonable yet you have a car to use while your own stays safely off the highway. . . Ask your Seaboard representative, or nearest railroad ticket agent, about this service.



AS CONVENIENT
AS YOUR OWN CAR

SCHEDULES BETWEEN EASTERN CITIES AND FLORIDA THROUGH VIRGINIA, THE CAROLINAS AND GEORGIA

(Continued)

NEW HEALTH SPA

Newest and one of the most important Southeastern United States health attractions is the Fort Lauderdale Florida Spa, located almost midway between Palm Beach and Miami in the world's renowned winter resort area.

In the most beautiful and modern setting which money could provide, baths and treatments are given by trained technicians and physical therapists. Utilized are the highly mineralized waters which well up half a million gallons each day from an artesian spring 4000 feet deep.

This exhilarating, healthful water is classified as Nontherman, Sodic, Calcic, Magnesian, Muriated Sulphated and Saline.

Fort Lauderdale, the Venetian City, has miles of ocean beach and inland waterways, modern and reasonably priced housing and living facilities, plus the beauty of setting, to assure its position as one of the leading health resorts of the nation. It is conveniently served by the Seaboard's fine fleet of trains.

Read Down			Miles from Richmond	TABLE 3		Read Up		
9	57	21		Daily Trains	Eastern Standard Time	10	58	22
PM 10 00	AM 8 27	AM 3 45	639.6	Lv JACKSONVILLE..... FLA.	Ar Lv	AM 7 00	PM 3 52	PM 7 05
f 10 22	‡ 8 46	—	657.9	Ar Baldwin.....	Ar Lv	f 7 55	—	—
f 10 41	—	—	676.9	Ar Lawley.....	Ar Lv	f 5 31	—	—
10 50	—	—	683.8	Ar Starke.....	Ar Lv	f 5 20	—	—
f 11 00	—	—	690.0	Ar Hampton.....	Ar Lv	f 5 06	—	—
11 10	□ 9 20	U 4 40	695.4	Ar Waldo (Gainesville).....	Ar Lv	f 4 58	□ 2 48	U 6 05
f 11 17	—	—	700.7	Ar Orange Heights.....	Ar Lv	f 4 46	—	—
f 11 27	—	—	709.7	Ar Hawthorne.....	Ar Lv	f 4 35	—	—
f 11 49	—	—	722.3	Ar Citra.....	Ar Lv	f 4 10	—	—
f 11 55	—	—	727.8	Ar Sparr.....	Ar Lv	f 4 03	—	—
f 12 01	—	—	731.1	Ar Anthony.....	Ar Lv	f 3 59	—	—
12 25	□ 10 02	U 5 22	734.7	Ar Ocala (Silver Springs).....	Ar Lv	f 3 47	□ 2 08	U 5 23
f 12 35	—	—	748.5	Ar Santos.....	Ar Lv	f 3 31	—	—
f 12 40	—	—	752.4	Ar Bellevue.....	Ar Lv	f 3 26	—	—
f 12 46	—	—	756.4	Ar Summerfield.....	Ar Lv	f 3 20	—	—
f 12 54	—	—	762.2	Ar Oxford.....	Ar Lv	f 3 09	—	—
1 15	10 30	5 55	766.8	Ar Wildwood (Homosassa Springs).....	Lv Ar	3 00	1 40	4 55
L 1 45	10 40	6 05	766.8	Lv Wildwood.....	Lv Ar	2 30	1 30	4 45
f 1 52	—	—	771.4	Ar Coleman.....	Lv Ar	f 2 12	—	—
f 2 01	—	—	782.9	Ar Center Hill.....	Lv Ar	f 2 01	—	—
f 2 52	—	—	816.2	Ar Polk City.....	Lv Ar	1 23	—	—
3 05	⊙ 11 33	G 6 59	825.4	Ar Auburndale.....	Lv Ar	1 10	—	—
3 16	⊙ 11 40	G 7 07	831.4	Ar Winter Haven (Cypress Gardens).....	Lv Ar	1 01	Q 12 25	C 3 44
3 30	⊙ 11 51	G 7 19	841.1	Ar W. Lake Wales-Lake Wales (Bok Tower).....	Lv Ar	12 50	⊙ 12 16	C 3 38
3 30	⊙ 11 51	G 7 19	841.1	Lv W. Lake Wales-Lake Wales.....	Lv Ar	12 50	⊙ 12 16	C 3 29
f 3 43	—	—	853.0	Ar West Frostproof.....	Lv Ar	f 12 36	—	C 3 29
3 58	⊙ 12 17	G 7 41	863.8	Ar Avon Park.....	Lv Ar	12 23	⊙ 11 53	C 3 09
4 11	⊙ 12 27	G 7 52	872.8	Ar Sebring (Highlands Hammock State Park).....	Lv Ar	12 12	% 11 44	C 3 00
f 4 46	—	—	898.6	Ar Ft. Bassinger.....	Lv Ar	f 11 42	—	—
5 10	—	—	914.3	Ar Okeechobee.....	Lv Ar	11 26	—	C 2 23
—	—	—	919.0	Ar Sherman.....	Lv Ar	—	—	—
5 41	⊙ 1 26	G 9 22	942.9	Ar Indiantown.....	Lv Ar	10 58	—	Q 2 00
6 30	⊙ 2 07	G 9 28	975.5	Ar WEST PALM BEACH-PALM BEACH.....	Lv Ar	10 25	10 19	Q 1 27
f 6 37	—	—	982.1	Ar Lake Worth.....	Lv Ar	f 10 10	⊙ 10 10	Q 1 16
f 6 50	—	—	988.9	Ar Boynton Beach.....	Lv Ar	f 10 02	—	—
f 6 57	⊙ 2 21	⊙ 9 38	998.1	Ar Delray Beach.....	Lv Ar	f 9 57	⊙ 9 59	Q 1 04
f 7 11	⊙ 2 31	⊙ 9 49	1003.9	Ar Deerfield Beach (Boca Raton Club).....	Lv Ar	f 9 45	⊙ 9 49	Q 12 54
f 7 17	—	—	1010.7	Ar Pompano Beach.....	Lv Ar	f 9 38	—	—
7 28	⊙ 2 48	⊙ 10 06	1017.9	Ar Ft. Lauderdale.....	Lv Ar	9 28	⊙ 9 34	Q 12 41
—	—	—	1022.4	Ar Dania.....	Lv Ar	—	—	—
f 7 42	⊙ 3 00	⊙ 10 18	1025.3	Ar Hollywood.....	Lv Ar	f 9 17	⊙ 9 25	Q 12 30
f 7 57	—	—	1027.1	Ar Hallandale.....	Lv Ar	f 9 03	—	—
f 8 12	⊙ 3 18	⊙ 10 37	1035.6	Ar Opa-Locka.....	Lv Ar	f 8 55	Z 9 08	Q 12 13
8 30	⊙ 3 35	⊙ 11 00	1042.0	Ar Hialeah (International Airport).....	Lv Ar	8 45	9 00	Q 12 05
10 00	■ 6 00	12 01	1045.6	Ar MIAMI.....	Lv Ar	—	—	—
2 15	9 30	4 15	—	Lv MIAMI (Florida Greyhound Lines Bus).....	Ar Lv	7 15	4 45	10 30
PM	PM	PM	—	Ar KEY WEST.....	Lv Ar	3 00	12 30	7 00

Characters explained on pages 41-42. Equipment on Pages 9-10.

TABLE 3-A

MIAMI-HAVANA, CUBA SERVICE

To and From International Airport Adjacent to Seaboard Hialeah Station
All Eastern Standard Time

PAN AMERICAN AIRWAYS, INC.

DAILY								DAILY									
AM	AM	AM	PM	PM	PM	PM	PM	AM	AM	PM	PM	PM	PM	PM	PM		
8:00	9:20	10:00	1:20	5:40	6:30	8:30	8:30	Lv Miami	Ar	9:03	11:03	12:13	12:48	4:13	5:48	8:23	10:33
9:07	10:27	11:07	2:27	6:47	7:37	9:37	9:37	Ar Havana	Lv	8:00	10:00	11:10	11:45	3:10	4:45	7:20	9:30
AM	AM	AM	PM	PM	PM	PM	PM			AM	AM	AM	AM	PM	PM	PM	PM

NATIONAL AIRLINES

DAILY								DAILY							
PM	PM	AM	AM	Lv Miami	Ar	AM	PM	PM	PM	PM	PM	PM	PM	AM	AM
7:30	5:00	8:15	7:15	Lv Miami	Ar	9:58	4:13	6:28	8:28	2:55	Lv Tampa	Ar	11:35		
8:28	5:58	9:13	8:13	Ar Havana	Lv	9:00	3:15	5:30	7:30	4:20	Ar Havana	Lv	10:00		
PM	PM	AM	AM			AM	PM	PM	PM	PM			AM		

THE PENINSULAR & OCCIDENTAL STEAMSHIP COMPANY

S. S. "FLORIDA"

Mon.-Wed.-Fri	PM 6:00	Lv Miami	Ar	AM 8:30	Wed.-Fri.-Mon
Tues.-Thurs.-Sat.	8:00 AM	Ar Havana	Lv	6:00 PM	Tues.-Thurs.-Sun.

MIAMI-NASSAU SERVICE

DAILY FLIGHTS					Steamer Service					
	British Overseas Airways	Pan American Airways	Pan American Airways	British Overseas Airways	S.S. "Neuvo Dominicano"					
Lv Miami	8:30 AM	8:40 AM	3:30 PM	7:15 PM	5:00 PM	Every other Friday and Monday				
Ar Nassau	9:30 AM	9:35 AM	4:25 PM	8:15 PM	9:00 AM	" Saturday " Tuesday				
Lv Nassau	5:00 PM	10:30 AM	5:00 PM	9:00 PM	2:00 PM	Every other Sunday				
Ar Miami	6:00 PM	11:25 AM	5:55 PM	10:00 PM	8:00 AM	" Monday				

TABLE 7

**ST. PETERSBURG-TAMPA-
WEST PALM BEACH-MIAMI
THROUGH CENTRAL FLORIDA**

2-9		Miles	DAILY SCHEDULES		10-1
PM	8 40	0.0	Lv ST. PETERSBURG (EST)	Ar	3 20
a	10.8		" Bay Pines	"	a
a	19.8		" Belleair	"	a
a	21.2		" Clearwater (Bellevue -Billmore Hotel)	"	a
a	33.7		" Oldsmar	Ar	a
a	9 25	53.9	Ar TAMPA	Lv	2 35
10 30	9 40	53.9	Lv TAMPA	Ar	2 20
11 06	10 20		" Plant City	"	1 40
3 30	11 05	95.0	" Bartow	"	12 55
3 30	11 30	107.7	Ar W. Lake Wales-Lake Wales Bok	"	12 30
3 30	b11	51.0	Lv W. Lake Wales-Lake Wales Tower	"	b12 16
3 58	b12	17.0	" Avon Park	"	b11 53
4 11	b12	27.0	" Sebring (Highlands Hammock State Park)	"	b11 44
6 30	b2	00.2	" West Palm Beach-Palm Beach	Lv	10 19
6 37	b2	07.2	" Lake Worth	Lv	b10 10
6 57	b2	21.5	" Delray Beach	b	9 57
7 11	b2	31.2	" Deerfield Beach (Boca Raton Club)	b	9 49
7 28	b2	48.2	" Fort Lauderdale	b	9 34
7 42	b2	00.9	" Hollywood	b	9 25
8 30	3 35	312.2	Ar MIAMI	Lv	9 00
10 00	6 00		Lv MIAMI (Fla. Greyhound Lines Bus)	Ar	4 45
2 15	9 30		Ar KEY WEST	Lv	12 30
PM	PM				PM

a-SAL tickets honored between St. Petersburg and Tampa via Florida Greyhound Lines.
 b-Stops to receive and discharge passengers for and from points between Tampa and West Lake Wales. c Sleeper parked until 7:00 AM. d Sleeper open 9 00 PM. f Flag Stop.
 -Limited Bus—Seats reserved without extra charge.

CROSS FLORIDA DAY SERVICE—Bus-Train Nos. 57 and 58.
 Coaches, Pullman and Dining Car..... West Lake Wales-Miami.
 Parlor Busses..... Tampa-West Lake Wales.

CROSS FLORIDA NIGHT SERVICE—Nos. 2-9 and 10-1
 Coaches..... Tampa-Miami.
 Sleeping Cars: E.B. W.B. Line
 10 Sec., 1 DR 2 Cpt. CS-2 CS-2 6700 Tampa-Miami.

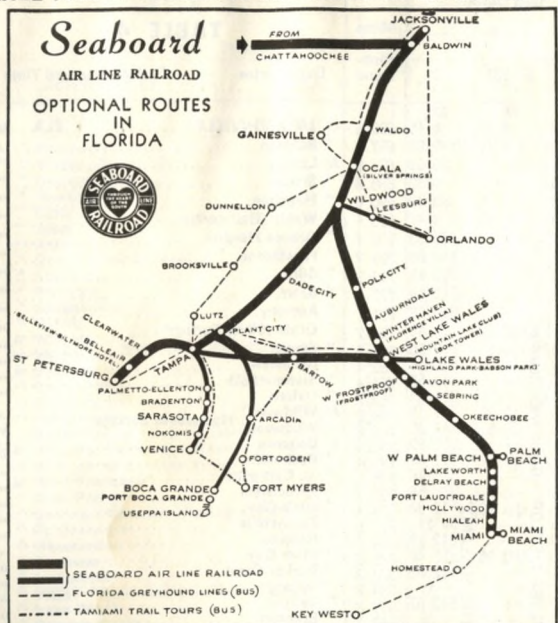
TABLE 8

**JACKSONVILLE-TALLAHASSEE-
PENSACOLA-MOBILE-NEW ORLEANS-
TEXAS-CALIFORNIA**

SAL No. 2-10-37 L&N No. 62-99		SAL No. 58-39 L&N No. 60-99		Miles	DAILY SCHEDULES	L&N No. 34-61 SAL No. 38-57	L&N No. 38-63 SAL No. 36-9-1
PM	8 45	AM	9 00		Lv MIAMI (EST) (SAL)	Ar	3 35
			9 45		" ST. PETERSBURG	"	2 30
	\$10 30		11 30		" TAMPA	"	12 40
	f 5 55				Ar Baldwin	Lv	8 46
	7 00		3 52		" JACKSONVILLE	"	8 27
	9 20		5 00	0.0	Lv JACKSONVILLE	Ar	9 00
	9 45			18.3	" Baldwin	"	8 25
	9 55			27.2	" McClenny	"	
f10 01				29.5	" Glen St. Mary	"	
f10 10				36.5	" Sanderson	"	
10 49		6 09		58.8	" Lake City	"	7 36
f11 01				70.3	" Wellborn	"	
11 13		6 33		81.0	" Live Oak	"	7 13
f11 46				102.0	" Lee	"	
12 05		7 09		109.4	" Madison	"	6 40
12 20				123.2	" Greenville	"	
12 36				130.6	" Aucilla	Lv	
12 45				138.0	Lv Drifton	"	2 40
1 00					Ar Monticello (SAL BUS)	Lv	2 20
12 20					Lv Monticello (SAL BUS)	Ar	3 00
1 05		8 25		146.9	Lv Lloyd	Lv	2 27
2 00		8 57		165.0	" TALLAHASSEE	"	2 00
2 38		9 35		189.0	" Quincy	"	1 17
3 30		9 35		207.6	Ar CHATTAHOOCHEE	Lv	12 50
3 45		9 45		207.6	Lv CHATTAHOOCHEE (LAN)	Ar	12 40
7 45		12 30		368.6	Ar Pensacola (CST)	Lv	11 39
8 30		12 40		368.6	Lv Pensacola	Ar	11 29
9 45		1 40		412.6	Ar Flomaton	Lv	10 30
3 25		3 25		462.6	" Mobile	"	8 45
7 10		7 10		612.6	Ar NEW ORLEANS	Lv	5 00
1230 1 Da	11 00 1 Da				Lv NEW ORLEANS (CST) (S P)	Ar	7 00 3 Da
7 30 1 Da	7 15 1 Da				Ar Houston	Lv	9 00 3 Da
11 40 1 Da	1 15 2 Da				" San Antonio	"	3 00 3 Da
11 10 1 Da	5 30 2 Da				" El Paso (MST)	"	8 05 2 Da
5 45 2 Da	2 15 3 Da				" Tucson	"	11 35 2 Da
8 20 2 Da					" Phoenix	"	5 50 2 Da
8 30 2 Da	3 30 3 Da				" Los Angeles (PST)	Lv	8 30 1 Da
8 00 3 Da	5 45 4 Da				Ar SAN FRANCISCO	Lv	7 15 1 Da
AM	AM						AM

Equipment on pages 9-10. Explanation of characters, pages 41-42.

See **BOTH COASTS** of **FLORIDA**
 CIRCLE TOUR OF FLORIDA ON ONE TICKET-NO EXTRA RAIL COST



All Round-Trip Tickets via Seaboard Air Line Railroad Co. through Jacksonville or Chattahoochee destined to West Palm Beach, Miami or any intermediate point will be honored over the Seaboard's direct route or via Tampa or St. Petersburg in one or both directions without additional rail cost. The circle tour, in one direction direct and in the opposite direction via St. Petersburg, enables the passenger, without additional rail cost, to visit all of the following cities: Ocala (Silver Springs), Auburndale, Winter Haven (Florence Villa), West Lake Wales (Mountain Lake), Avon Park, Sebring, Bartow, Tampa, Safety Harbor, Clearwater, Belleair, St. Petersburg.

Palmetto-Ellenton, Bradenton, Sarasota, Venice, Boca Grande and Port Boca Grande may also be included **without additional rail charge**. Side trip tickets may be secured at time of purchase or obtained from Seaboard agents at Miami, West Palm Beach, St. Petersburg or Tampa.

OPTIONAL ROUTES IN FLORIDA
 Apply on All Round-Trip Tickets

Tickets or Coupons Reading
 Seaboard Air Line Railroad Co :

To Miami, may be honored on either going or return trip to or from Arcadia, Fort Myers, Boca Grande, Port Boca Grande, Palmetto-Ellenton, Bradenton, Sarasota or Venice (direct or via Tampa or St. Petersburg). Passengers must arrange for their own transportation between Miami and station from or to which use of ticket will be made. Baggage may be checked from or to Miami direct or from or to station to or from which ticket is to be used, passengers making own arrangements for handling of baggage between Miami and such station.

To Arcadia, Boca Grande, Port Boca Grande and intermediate points will be honored via Tampa, or via West Lake Wales.

To Palmetto-Ellenton, Bradenton, Sarasota, Venice and intermediate points will be honored via Tampa.

To Sarasota, Venice and intermediate points will be honored via Tampa or West Lake Wales.

To St. Petersburg, will be honored direct or via West Lake Wales.

For optional honoring arrangements and schedules in connection with Florida Greyhound Lines and Tamiami Trail Tours, Inc., see tables 9 and 10, pages 25 and 26.

Optional Honoring Arrangements Via

FLORIDA GREYHOUND LINES AND TAMiami TRAIL TOURS

Through tickets reading via SAL Railroad to destinations listed below will be honored via the Florida Greyhound Lines and Tamiami Trail Tours in accordance with their schedule shown:

FLORIDA GREYHOUND LINES BUSES

VIA JACKSONVILLE TO AND FROM ORLANDO						
Lv Jacksonville	81	83	85	87	91	
Ar Orlando	3 00AM	7 00AM	11 00AM	3 00PM	11 00PM	
	7 15AM	11 36AM	4 04PM	7 48PM	3 25AM	
Lv Orlando	100	90	92	82	84	
Ar Jacksonville	7 15AM	9 30AM	1 45PM	5 48PM	9 56PM	
	11 56AM	2 15PM	6 40PM	10 25PM	2 05AM	
VIA OCALA TO AND FROM ORLANDO						
Lv Ocala	AM	AM	PM	PM	PM	AM
Lv Leesburg	7 15	11 00	1 45	3 10	6 45	12 50
Lv Tavares	8 20	12 05	2 50	4 15	7 47	1 47
Lv Zellwood	8 41	12 26	3 11	4 35	8 05	2 04
Lv Plymouth	9 18	1 03	3 48	5 13	8 35	2 35
Lv Apopka	9 25	1 10	3 55	5 20	8 42	2 42
Lv Lockhart	9 30	1 15	4 00	5 25	8 47	2 47
Ar Orlando	9 41	1 26	4 11	5 36	8 57	2 59
	9 55	1 40	4 25	5 50	9 10	3 10
Lv Orlando	AM	AM	PM	PM	PM	AM
Lv Lockhart	7 30	9 00	1 00	4 35	4 45	10 45
Lv Apopka	7 44	9 14	1 14	..	4 59	10 59
Lv Plymouth	7 55	9 25	1 26	..	5 11	11 09
Lv Zellwood	8 00	9 30	1 31	..	5 16	11 14
Lv Tavares	8 07	9 37	1 38	..	5 23	11 20
Lv Leesburg	8 44	10 14	2 15	..	6 00	11 48
Ar Ocala	9 05	10 35	2 36	6 21	6 21	12 05
	10 10	11 40	3 40	7 25	7 25	1 05

JACKSONVILLE-WALDO-GAINESVILLE OCALA-DUNNELLON-TAMPA-ST. PETERSBURG					
To or from Gainesville via Fla. Greyhound Lines via Jacksonville or Waldo					
From the north to other points via Fla. Greyhound Lines from Jacksonville, Waldo, Ocala or Tampa					
Lv Jacksonville	103	105	107	109	111
Lv Waldo	5 00AM	9 00AM	1 00PM	5 00PM	9 00PM
Ar Gainesville	6 22AM	10 50AM	2 48PM	6 52PM	10 28PM
Lv Gainesville	6 45AM	11 10AM	3 10PM	7 16PM	10 47PM
Lv Gainesville	6 55AM	11 15AM	3 15PM	7 25PM	11 02PM
Ar Ocala	7 55AM	12 22PM	4 18PM	8 23PM	11 59PM
Ar Dunnellon			5 28PM		
Ar Brooksville			6 43PM		
Ar Tampa	11 30AM	4 00PM	8 03PM		3 15AM
Ar St. Petersburg (See Note)	12 15PM	4 45PM	8 48PM		4 00AM
Lv St. Petersburg (See Note)	112	102	116	118	108
Lv Tampa	6 45AM	10 45AM	12 30PM	4 30PM	9 30PM
Lv Brooksville	7 40AM	11 45AM	1 30PM	5 30PM	10 30PM
Lv Dunnellon		12 52PM	2 37PM		11 32PM
Lv Ocala		2 09PM	3 54PM		
Ar Gainesville	10 59AM	3 02PM	5 04PM	9 06PM	1 15AM
Lv Gainesville	11 54AM	4 01PM	6 03PM	10 05PM	2 14AM
Ar Waldo	12 01PM	4 10PM	6 10PM	10 20PM	2 29AM
Lv Jacksonville	12 20PM	4 29PM	6 29PM	10 39PM	2 47AM
	2 00PM	6 15PM	8 15PM	12 10AM	4 10AM

Note-Tickets reading via SAL from or to St. Petersburg via Tampa will be honored on any Florida Greyhound Bus between Tampa and St Petersburg.

TAMiami TRAIL TOURS BUSES

TAMPA-SARASOTA-VENICE-FORT MYERS

Tamiami Trail Tours will honor to or from all points via Tampa; also to or from Fort Myers via Venice

Lv Tampa	4 30	AM	AM	9 00	11 00	PM	PM	4 30	6 00	9 00	10 00	..
Ar Palmetto	5 35	8 05	10 05	12 05	3 35	6 00	7 05	10 05	11 05
Ar Bradenton	5 40	8 15	10 10	12 15	3 45	6 10	7 10	10 15	11 15
Ar Sarasota	6 00	8 35	10 30	12 40	4 10	6 35	7 45	10 40	11 35
Ar Venice	6 50	9 15	11 10	1 30	5 00	..	8 15	..	12 30
Ar Ft. Myers	8 05	10 40	12 30	2 40	6 15	..	9 40	..	1 50

Lv Ft. Myers	2 00	4 00	AM	AM	7 30	9 30	12 45	PM	PM	PM	PM	10 30	..
Lv Venice	3 15	5 15	..	8 55	10 40	2 00	..	6 00	7 15	11 40
Lv Sarasota	3 50	6 00	7 15	9 25	11 20	2 50	5 15	8 05	12 15
Lv Bradenton	4 10	6 20	7 35	10 00	11 50	3 10	5 40	8 25	12 35
Lv Palmetto	4 15	6 30	7 45	10 10	11 59	3 20	5 50	8 35	12 40
Ar Tampa	5 20	7 40	8 55	11 35	1 10	4 25	7 00	9 45	1 40

WESTERN UNION TELEGRAMS . . .

Every railroad traveler automatically has a charge account with Western Union and can send telegrams enroute easily and conveniently under a new plan in operation with the cooperation of the railroads.

This plan avoids the necessity for cash payment. The traveler merely hands his telegram, written on a special new telegraph blank, to the train attendant for dispatch at the next stop. Sender can charge message to his home address, to his business charge account, Western Union Credit Card number, or can send it collect. The new arrangement will save time involved in figuring tolls and making change.

The Western Union Telegraph Company handles messages at public telegraph offices on this railroad.

TABLE 10

MIAMI-KEY WEST SERVICE VIA FLORIDA GREYHOUND LINES

Through tickets are issued via SAL Railroad to Miami thence Florida Greyhound Lines to Key West and intermediate stations.

Consult Ticket Agents.

Lv Miami	1 00	AM	AM	AM	AM	PM	PM	PM	PM
Lv Homestead	2 05	6 46	9 05	11 05	12 01	1 05	3 00	6 40	8 00
Lv Tavernier	2 51	7 32	9 51	11 51	1 51	4 51	7 30	9 51	..
Lv Pirates Cove	4 45	9 20	11 45	1 45	3 45	6 45	..	11 45	..
Ar Key West	5 15	9 50	12 15	2 15	4 15	7 15	9 30	12 15	..

Lv Key West	7 00	AM	AM	AM	PM	PM	PM	PM	AM
Lv Pirates Cove	9 00	9 30	11 30	12 30	3 00	5 00	7 30	12 30	..
Lv Tavernier	8 55	11 23	1 23	2 53	5 23	7 23	9 53	2 53	..
Lv Homestead	9 40	12 10	2 10	3 40	6 10	8 10	10 40	3 40	..
Ar Miami	10 30	1 15	3 15	4 45	7 15	9 15	11 45	4 45	..

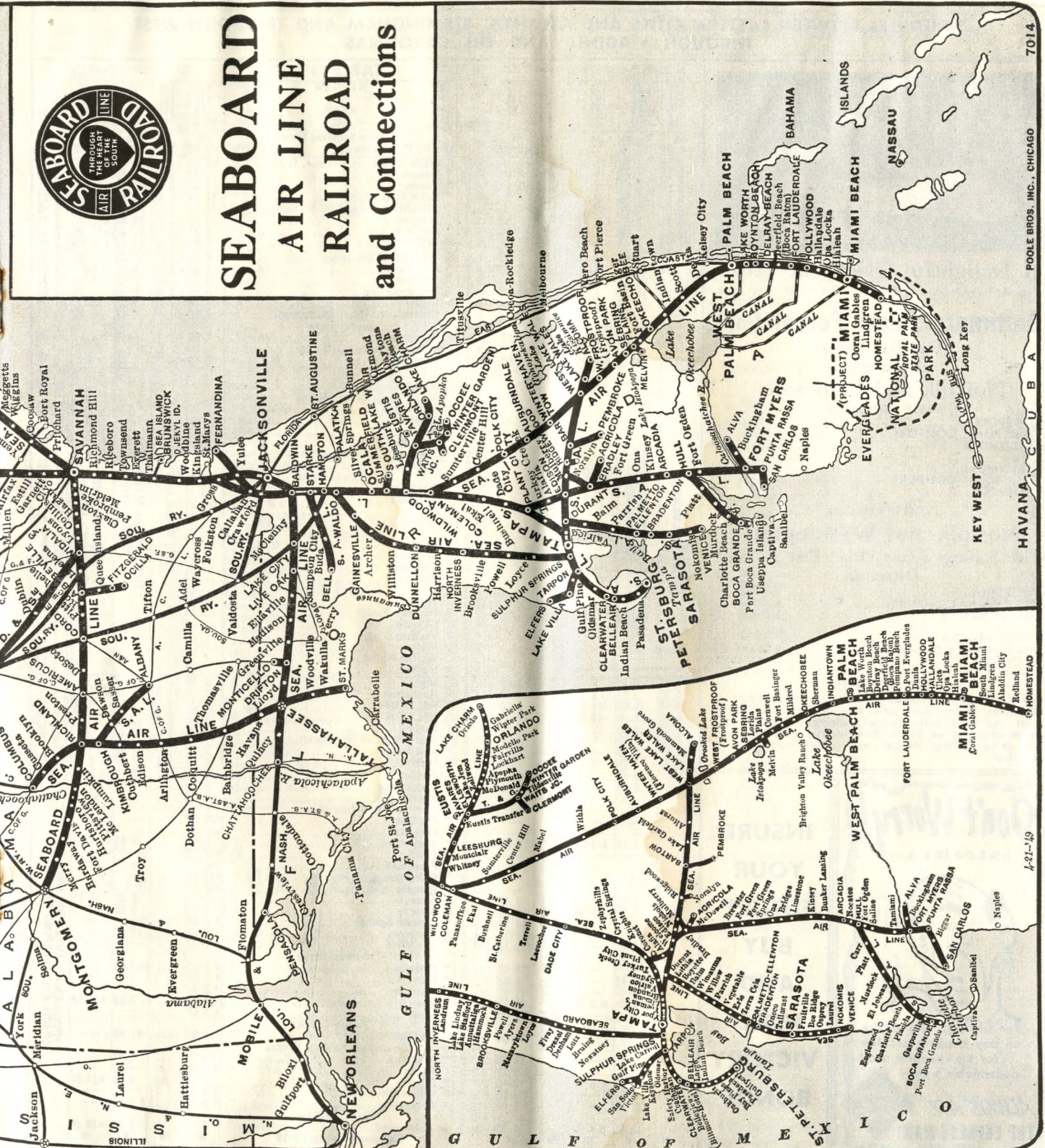
■ Limited Bus-Seats Reserved without additional cost.



Railway Express Agency handles express business on this railroad — operating fast ser

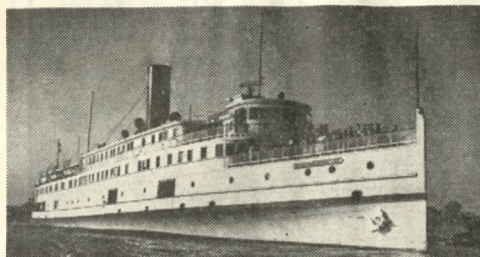


SEABOARD AIR LINE RAILROAD and Connections



Service between New York, Washington, Virginia, the Carolinas, Georgia and Florida.

SCHEDULES BETWEEN EASTERN CITIES AND ATLANTA, BIRMINGHAM AND THE SOUTHWEST THROUGH VIRGINIA AND THE CAROLINAS



A Delightful Overnight Trip
Via
Baltimore Steam Packet Co.
(Old Bay Line)
Between
Norfolk and Baltimore

DAILY SCHEDULES

Lv. NORFOLK	5 30PM	EST
Lv. OLD POINT COMFORT	6 30PM	EST
Ar. BALTIMORE	5 30AM	EST
Lv. BALTIMORE	5 30PM	EST
Lv. OLD POINT COMFORT	4 30AM	EST
Ar. NORFOLK	5 30AM	EST

**And Between
Norfolk and Washington**
With Sailings Every Other Day In Each
Direction

Lv. NORFOLK	5 00PM	EST
Lv. OLD POINT COMFORT	6 00PM	EST
Ar. WASHINGTON	6 00AM	EST
Lv. WASHINGTON	5 30PM	EST
Ar. OLD POINT COMFORT	5 40AM	EST
Ar. NORFOLK	7 00AM	EST

SAILING DATES

Steamer sails from Norfolk and Old Point Comfort on ODD dates during June and July, EVEN dates during August and ODD dates during September. Steamer sails from Washington on EVEN dates during June and July, ODD dates during August and EVEN dates during September.

Don't Worry!

-WE DO IT ALL-

For friendly, sure advice on any shipping problem... for the cheapest, most dependable way—

ALWAYS ASK THE EXPRESS MAN!

RAILWAY EXPRESS AGENCY

INSURE
YOUR
FUTURE
BUY
AND
HOLD
VICTORY
BONDS

Daily Trains—Read Down					Miles	TABLE 11	Daily Trains—Read Up				
171	23	175	173	173		NYNH&H PRR RF&P SAL	172	188	176	176	170
143	137	197	123	119			166	112	176	128	170
9	95	33	107	93			94	110	96	34	108
9	6	33	7	3-11			12-4	10	6	34	8
PM	Noon	AM	PM	PM		Eastern Standard Time	AM	PM	PM	PM	PM
2 00	12 00	7 30	10 00	10 00	...	Lv BOSTON (NYNH&H)	7 10	2 45	7 40	7 40	10 25
7 30	5 30	c12 40	10 30	10 00	0.0	Lv NEW YORK (PRR—Penn. Station)	12 55	9 15	2 45	c 1 45	5 45
7 45	5 45	c12 55	10 45	10 10	0.0	Lv Newark	12 37	8 59	2 29	c 1 30	5 29
8 29	6 33	c 1 40	11 32	10 49	58.1	" Trenton	11 48	8 15	—	c12 45	—
8 57	7 05	c 1 09	12 04	10 56	85.9	" North Philadelphia	11 21	7 46	1 22	c12 17	4 22
9 07	7 27	c 1 18	12 20	10 58	91.7	" PHILADELPHIA (30th St. Station)	11 11	7 31	1 13	c12 07	4 13
9 38	7 57	c 1 28	12 52	10 53	118.1	" Wilmington	10 42	6 55	1 24	c11 37	3 44
10 40	9 02	c 1 46	1 58	10 04	186.5	Lv Baltimore	9 41	5 50	11 41	c10 36	2 42
11 20	9 45	c 1 30	2 40	10 07	226.6	Ar WASHINGTON	9 00	5 05	11 00	c 9 55	2 00
12 05	10 00	J 5 00	3 15	9 00	0.0	Lv WASHINGTON (RF&P)	8 30	i 4 00	10 00	9 25	1 50
12 24	10 19	J 5 19	3 34	9 18	8.2	" Alexandria	8 07	j 3 37	9 37	bb	1 27
12 56	10 50	b 5 19	4 05	9 50	34.7	" Quantico	7 27	bb	9 00	8 30	12 52
1 22	11 17	s 12	4 35	10 17	54.1	" Fredericksburg	6 51	2 41	8 35	8 08	12 28
3 05	12 48	7 43	6 02	11 50	116.5	Lv RICHMOND (SAL)	5 10	1 10	7 00	6 50	11 05
3 05	1 10	7 43	6 12	12 15	0.0	Ar RICHMOND (Main St. Station)	4 25	12 45	6 15	6 50	10 45
3 36	1 50	N 8 09	6 42	1 03	0.2	" Petersburg	4 00	12 10	5 45	N 6 14	10 20
5 07	3 18	—	8 10	2 42	88.4	" ROANOKE RIVER	2 00	10 25	4 00	—	8 57
			8 10	2 42	98.2	Ar Norfolk					8 57
			No. 17	0.0		Lv Norfolk (FERRY)					No. 18
			4 10	0.0		" ELIZABETH RIVER					12 40
			V 4 30	0.0		" Portsmouth					12 25
			V 5 00	17.4		" Suffolk					11 55
			f 5 13	25.9		" Purvis					f11 39
			f 5 18	31.2		" Carrsville					f11 32
				36.7		" BLACKWATER RIVER					
			5 30	41.8		" Franklin					11 22
			f 5 38	43.4		" NOTTAWAY RIVER					
			f 5 45	48.8		" Hand					f11 06
			f 5 58	53.8		" Newsoms					f10 58
			f 6 03	56.7		" Boykins					10 49
			f 6 10	58.9		" Branchville					f10 41
			f 6 13	56.9		" MEHERRIN RIVER					
			f 6 20	62.9		" Margaret					f10 32
			f 6 25	68.9		" Seaboard					f10 23
			f 6 31	72.4		" Gumberry					f10 16
			f 6 31	76.0		" Garysburg					f10 11
			6 40	78.1		" ROANOKE RIVER					10 00
			f 6 52	83.0		" Weldon					9 48
			f 7 12	98.5		" Roanoke Rapids					9 28
			f 7 19	104.2		" Littleton					f 9 19
			f 7 26	109.3		" Vaughan					f 9 12
			f 7 32	113.5		" Macon					f 9 05
			f 7 45	115.8		" Warren Plains					9 00
5 07	3 37	V	V 8 10	2 42	98.2	Ar Norfolk	2 00	10 25	3 37	V	V 8 57
5 25	3 55	FV 9 41	V 8 29	3 08	113.4	" Henderson	1 18	10 02	3 15	FV 4 43	V 8 31
6 15	4 55	V 10 25	V 9 19	4 10	157.2	Ar RALEIGH	12 20	9 10	2 10	4 00	V 7 45
6 35	5 25	V 10 30	V 9 25	4 35	157.2	Lv RALEIGH	12 01	8 50	1 30	3 55	V 7 35
7 28	6 25	V 10 48	V 10 13	5 41	199.3	" Sanford	10 52	7 47	12 37	V	V 6 47
7 58	7 00	V	V 10 48	6 24	225.0	" Southern Pines (Pinehurst)	10 06	7 20	11 38	V	V 6 17
8 07	7 15	V	V 10 48	6 37	253.8	" Aberdeen	9 41	7 05	11 25	—	—
8 45	8 00	12 15	V 11 20	7 20	253.8	Ar Hamlet	9 10	6 40	11 00	2 15	V 5 45
	8 40	12 30	8 15	253.8	Lv Hamlet	8 30	—	—	—	9 45	2 00
	8 49	—	8 25	260.0	Ar Rockingham	8 16	—	—	—	9 34	—
	—	—	—	262.7	" Steele's Mill	qq8 08	—	—	—	—	—
	—	—	—	265.2	" PEE DEE RIVER						
	—	—	—	267.2	" Pee Dee	qq8 03	—	—	—	—	—
	—	—	—	273.6	" Lilesville	qq7 55	—	—	—	—	—
	9 18	A 1 02	8 58	278.5	" Wadesboro	7 47	9 10	A 1 27	—	—	—
	—	—	—	286.6	" Polkton	qq7 28	—	—	—	—	—
	9 50	1 38	—	290.5	" Peachland	qq7 23	—	—	—	—	—
	9 58	1 45	—	296.2	" Marshville	qq7 18	—	—	—	—	—
	—	—	—	300.9	" Wingate	qq7 13	—	—	—	—	—
	—	—	—	306.4	Ar Monroe	7 05	8 35	12 51	—	—	—
	—	—	—	306.4	Lv Monroe	6 50	8 25	12 45	—	—	—
	—	—	—	314.2	" Mineral Springs	f 6 34	—	—	—	—	—
	—	—	—	318.7	" Waxhaw	6 23	8 08	—	—	—	—
	—	—	—	327.1	" Van Wyck	f 6 11	—	—	—	—	—
	—	—	—	328.4	" CATAWBA RIVER						
	—	—	—	331.0	" Catawba	f 6 05	uu7 53	—	—	—	—
	—	—	—	337.9	" Edgemoor	f 5 55	—	—	—	—	—
	—	—	—	342.8	" Rodman	f 5 48	—	—	—	—	—
	—	—	—	351.4	" Chester	5 20	7 23	n11 53	—	—	—
	—	n 2 35	—	363.0	" Leeds	f 5 05	—	—	—	—	—
	—	—	—	365.7	" BROAD RIVER						
	—	—	—	368.4	" Carlisle	4 53	—	—	—	—	—
	—	—	—	375.1	" TIGER AND ENOREE RIVERS						
	—	—	—	380.0	" Whitmire	4 31	—	—	—	—	—
	—	—	—	389.9	" Renno	f 4 18	—	—	—	—	—
	—	—	—	397.1	" Clinton	3 57	—	—	—	—	—
	—	n 3 27	—	406.5	" Mountville	f 3 39	—	—	—	—	—
	—	—	—	410.9	" Cross Hill	f 3 29	—	—	—	—	—
	—	—	—	415.2	" SALUDA RIVER						
	—	n 4 03	—	424.9	Ar Greenwood	3 10	—	—	—	—	—
PM	12 50	AM	1 23	AM	—	Equipment on pages 9-10	AM	PM	5 38	PM	10 30

SCHEDULES BETWEEN EASTERN CITIES AND ATLANTA, BIRMINGHAM AND THE SOUTHWEST THROUGH VIRGINIA AND THE CAROLINAS

Read Down			Miles from Richmond	TABLE 11 (Continued)		Read Up		
5	33	11		DAILY TRAINS		12	6	34
PM	AM	AM			AM	PM	PM	
12 50	n 4 03	1 40	424.9	Lv Greenwood..... Ar	3 10	5 38	n 10 30	
			435.6	LONG CANE CREEK				
1 15	n 4 25	2 12	440.6	" Abbeville..... Lv	2 33	5 10	n 10 09	
			449.1	LITTLE RIVER				
f 1 32	—	2 38	454.5	" Calhoun Falls..... "	2 00	f 4 45	—	
			457.2	SAVANNAH RIVER				
		f 2 50	461.1	" Heardmont..... GA. "	f 1 45	—	—	
		f 2 55	465.5	" Middleton..... "	f 1 38	—	—	
		f 3 05	471.3	" Elberton..... "	1 25	4 22	n 9 26	
1 55	n 5 03	f 3 31	478.9	" Ogleby..... "	f 12 59	—	—	
		f 3 37	480.4	NORTH BROAD RIVER				
f 2 15	—	f 3 46	483.4	" Berkeley..... "	f 12 54	f 4 02	—	
f 2 24	—	f 3 46	489.0	" Comer..... "	f 12 46	f 3 55	—	
f 2 35	—	f 3 58	494.5	" Colbert..... "	f 12 35	f 3 46	—	
		f 4 05	499.4	" Hull..... "	f 12 27	—	—	
			505.2	OCONEE RIVER				
2 57	5 45	4 30	505.7	" Athens..... "	12 15	3 30	8 48	
		f 4 47	515.1	" Bogart..... "	f 11 39	—	—	
		f 4 52	519.1	" Statham..... "	f 11 34	—	—	
			525.8	" Russell..... "	f	—	—	
3 28	—	5 10	527.0	" Winder..... "	11 15	2 48	—	
		f 5 19	533.5	" Auburn..... "	f 11 08	—	—	
		f 5 25	538.1	" Dacula..... "	f 11 00	—	—	
3 48	—	f 5 34	544.1	" Lawrenceville..... "	10 48	2 28	—	
		f 5 46	550.0	" Gloster..... "	f 10 36	—	—	
		f 5 51	553.4	" Luxomni..... "	f	—	—	
		f 6 00	555.0	" Lilburn..... "	f 10 29	—	—	
f 4 20	a 6 55	f 6 10	560.6	" Tucker..... "	f 10 20	f 1 57	a 7 37	
f 4 40	7 15	f 6 30	569.4	" Emory University..... "	f 10 07	1 35	7 10	
			578.6	Lv ATLANTA..... Ar	—	1 10	6 50	
5 00	7 40	—	587.6	CHATTAHOOCHEE RIVER				
			591.2	NICKAJACK RIVER				
f 5 59	—	—	609.8	" Dallas..... "	f 12 12	—	—	
f 6 26	h 8 58	—	626.0	" Rockmart..... "	11 50	h 5 37	—	
f 6 47	h 9 15	—	638.8	" Cedartown..... "	11 31	h 5 21	—	
f 7 01	—	—	648.2	" Esom (EST)..... GA. "	f 11 15	—	—	
			653.5	" Borden Springs (CST)..... ALA. "	f	—	—	
f 6 20	h 8 44	—	662.6	" Piedmont..... "	f 9 55	h 3 53	—	
f 6 30	—	—	670.3	" Maxwellborn..... "	f 9 42	—	—	
f 6 44	h 9 05	—	681.2	" Wellington..... "	f 9 23	h 3 31	—	
f 6 54	h 9 14	—	688.0	" Ohathee..... "	f 9 14	—	—	
			690.5	COOSA RIVER				
		f 6 59	691.3	" Lock..... "	f	—	—	
f 7 09	h 9 29	—	697.9	" Ragland..... "	f 8 54	h 3 10	—	
f 7 21	—	—	707.0	" Wattsville..... "	f 8 40	h 2 58	—	
f 7 37	—	—	716.3	" Odenville..... "	f 8 24	—	—	
ss 7 44	—	—	721.6	" Sanie..... "	f 8 14	—	—	
ss 7 48	—	—	725.1	" Parsons..... "	f 8 07	—	—	
			728.4	CABABA RIVER				
f 8 01	—	—	733.9	" Alton..... "	f 7 54	—	—	
f 8 25	10 45	—	745.1	Ar BIRMINGHAM..... ALA. Lv	7 30	2 00	—	
f 9 00	11 59	—	745.1	Lv BIRMINGHAM..... (FRISCO) Ar	7 00	7 00	—	
2 45	4 20	—	892.8	Ar Tupelo..... MISS. Lv	1 20	1 20	—	
4 47	5 43	—	952.0	" Holly Springs..... "	10 57	10 57	—	
6 40	6 45	—	998.2	Ar MEMPHIS, TENN. " "	9 20	9 20	—	

Characters explained on pages 41-42

It Pays to
SHIP SEABOARD!

Seaboard knows your shipping problems—gives personal attention to your shipments—speeds them to their destinations with Diesel motive power and other modern facilities. For dependable freight service to and from the Southeast—it pays to ship Seaboard!

For rates, schedules, routing, or assistance in handling your shipping problems, contact any Seaboard Freight Traffic Representative listed on pages 47-50, or the undersigned.

J. P. Derham, Jr.

Assistant Vice-President—Solicitation and Service
Seaboard Air Line Railroad Company
S.A.L. R.R. Building, Norfolk 10, Va.

OTHER PASSENGER TRAIN SERVICE

TABLE 12 WILMINGTON-HAMLET-CHARLOTTE-RUTHERFORDTON

13		Miles	DAILY TRAINS		14	
3 50PM	0.0		Lv Wilmington (EST)..... N. C. Ar	1 30PM	13.0	Ar
5 51PM	67.6	Lv Lumberton..... Ar	10 28AM	28.0	Ar	10 10AM
6 20PM	79.0	Lv Pembroke..... Ar	9 42AM	42.0	Ar	9 15AM
6 33PM	88.9	Lv Maxton..... Ar	8 20AM	20.0	Ar	8 08AM
6 58PM	96.0	Lv Laurinburg..... Ar	7 35AM	35.0	Ar	7 35AM
7 30PM	111.1	Ar Hamlet..... Lv	6 45AM	45.0	Ar	6 45AM
8 25PM	111.1	Lv Hamlet..... Ar	6 35AM	35.0	Ar	6 00AM
8 34PM	117.3	Ar Rockingham..... Lv	—	—	—	—
9 10PM	135.8	Ar Wadesboro..... Lv	—	—	—	—
9 55PM	163.7	Ar Monroe..... Lv	—	—	—	—
10 05PM	163.7	Lv Monroe..... Ar	—	—	—	—
10 45PM	188.1	Ar Charlotte..... Lv	—	—	—	—
—	219.5	Ar Lincolnton..... Lv	—	—	—	—
—	241.1	Ar Shelby..... Lv	—	—	—	—
—	268.0	Ar Rutherfordton..... N. C. Lv	—	—	—	—

NOTE—Frequent bus service operated by Queen City Coach Company—Through S. A. L. Railroad tickets honored.

Nos. 13 and 14—Between Wilmington and Charlotte, N. C. Coach service.

TABLE 13 HAMLET-CHARLESTON-SAVANNAH

25		Miles	DAILY TRAINS		26	
9 00AM	0.0		Lv Hamlet (EST)..... Ar	5 25PM	25.0	Ar
9 29AM	17.5	Ar McColl..... Lv	4 10PM	10.0	Ar	3 39PM
10 01AM	38.3	Ar Dillon..... Lv	2 50PM	50.0	Ar	2 31PM
10 37AM	55.7	Ar Mullins..... Lv	2 00PM	0.0	Ar	1 40PM
11 22AM	80.3	Ar Poston..... Lv	1 10PM	10.0	Ar	1 10PM
11 40AM	88.8	Ar Hemingway..... Lv	12 25PM	25.0	Ar	1 55PM
12 15PM	111.4	Ar Andrews..... Lv	1 40PM	40.0	Ar	1 17PM
12 20PM	0.0	Lv Andrews (SAL BUS)..... Ar	1 40PM	40.0	Ar	1 40PM
12 50PM	16.4	Ar Georgetown (SAL BUS)..... Lv	1 17PM	17.0	Ar	1 17PM
11 40AM	0.0	Lv Georgetown (SAL BUS)..... Ar	12 25PM	25.0	Ar	1 55PM
12 10PM	16.4	Ar Andrews (SAL BUS)..... Lv	1 40PM	40.0	Ar	1 17PM
12 30PM	111.4	Lv Andrews..... Ar	1 40PM	40.0	Ar	1 17PM
12 50PM	125.1	Ar Jamestown..... Lv	12 02PM	2.0	Ar	11 20AM
f	136.8	Ar Witherbee..... Lv	11 30AM	3.0	Ar	10 27AM
2 04PM	167.9	Ar Charleston..... Lv	9 44AM	44.0	Ar	9 00AM
2 30PM	183.7	Ar Meggetts..... Lv	—	—	—	—
3 07PM	215.5	Ar Dale..... Lv	—	—	—	—
3 12PM	218.5	Ar Lohco..... Lv	—	—	—	—
3 43PM	246.3	Ar Pritchard..... Lv	—	—	—	—
4 30PM	262.9	Ar Savannah..... Lv	—	—	—	—

Nos. 25 and 26—Between Hamlet, N. C. and Savannah, Ga. Coach service.

TABLE 14 CUTHBERT AND TALLAHASSEE

SEE NOTE		Miles	DAILY TRAINS		SEE NOTE	
	0.0		Lv Cuthbert (EST)..... GA. Ar			
	26.4	Ar Arlington..... Lv				
	45.0	Ar Colquitt..... Lv				
	59.6	Ar Lynn..... Lv				
	65.8	Ar Bainbridge..... GA. Lv				
	89.1	Ar Havana..... FLA. Lv				
	106.1	Ar Tallahassee..... FLA. Lv				

NOTE—Bus service operated by Modern Coach Corp.—Through S. A. L. Railroad tickets honored.

TABLE 15 SAVANNAH-COTTONTON-MONTGOMERY

SEE NOTE		Miles	DAILY TRAINS		SEE NOTE	
	0.0		Lv Savannah (EST)..... GA. Ar			
	48.4	Ar Claxton..... Lv				
	79.8	Ar Vidalia..... Lv				
	113.6	Ar Helena..... Lv				
	139.0	Ar Abbeville..... Lv				
	168.1	Ar Cordele..... Lv				
	198.6	Ar Americus..... Lv				
	227.2	Ar Richland..... Lv				
	235.8	Ar Lumokin..... GA. Ar				
No. 11	230PM	Lv Cottonton (CST)..... ALA. Ar	No. 12	10 00AM	Ar	10 00AM
12 55PM	274.2	Ar Rutherford..... Ar	9 31AM	31.0	Ar	9 21AM
1 05PM	281.1	Ar Hartsboro..... Lv	8 46AM	46.0	Ar	8 46AM
1 37PM	298.8	Ar Fort Davis..... Lv	7 30AM	30.0	Ar	7 30AM
2 50PM	337.5	Ar Montgomery..... ALA. Ar				

NOTE—Frequent bus service operated by Atlantic Stages, Inc.—Through S. A. L. Railroad tickets honored.

Nos. 11 and 12—Between Cottonton and Montgomery, Ala. Diesel-electric motor trains. Coach service.

TABLE 16

**NEW YORK, NEW HAVEN & HARTFORD R. R.
BOSTON-NEW YORK TO WASHINGTON**

PENNSYLVANIA RAILROAD

Eastern Time	169 Daily	9 Daily	175 Daily	11 Daily	177 Daily	13 Daily	23 Daily	15 Daily	171 Daily	25 Daily	27 Ex Sa-Su	29 Ex.Sept.2 Sa-Su only	189 Daily	43 Su only	45 Ex.Sept.2 Su only	179-389 Daily	173 Daily	187 Daily	3 Daily
Lv BOSTON, MASS.	AM 6 30	AM 7 30	AM 9 00	AM 10 00	AM 11 00	Noon 12 00	PM 1 00	PM 2 00	PM 3 00	PM 4 00	PM 4 05	PM 5 00	PM 6 00	PM 7 00	PM 8 00	PM 10 00	PM 11 05	PM 12 10	PM 12 48
" Providence, R. I.	7 20	8 25	9 50	10 50	11 55	12 48	1 50	2 50	3 53	4 48	4 55	5 59	6 50	7 50	8 50	10 32	11 05	12 10	12 48
" New London, Conn.	8 26	9 36	10 50	11 53	1 02	1 46	2 59	3 56	4 56	5 46	5 55	6 58	7 56	8 50	10 32	11 05	12 10	12 48	
" Springfield, Mass.	3 55	4 35	5 00	5 45	6 15	6 45	7 15	7 45	8 15	8 45	9 15	9 45	10 15	10 45	11 15	11 45	12 15	12 45	
" New Haven, Conn.	5 23	9 28	10 42	11 50	12 51	2 08	2 41	3 03	3 30	4 00	4 30	5 00	5 30	6 00	6 30	7 00	7 30	8 00	
Ar New York, N. Y. (G. C. Term.)	10 50	11 15	11 45	12 15	12 45	1 15	1 45	2 15	2 45	3 15	3 45	4 15	4 45	5 15	5 45	6 15	6 45	7 15	
Ar New York, N. Y. (Pa. Sta.)	6 55	12 15	12 45	1 15	1 45	2 15	2 45	3 15	3 45	4 15	4 45	5 15	5 45	6 15	6 45	7 15	7 45	8 15	
Ar WASHINGTON, D. C. (PRR)	11 15	4 15	6 15	6 15	6 15	6 15	6 15	6 15	6 15	6 15	6 15	6 15	6 15	6 15	6 15	6 15	6 15	6 15	
SEE REFERENCE MARKS	G	H	F	H	N	H	X	H	I	H	Q	H	K	D	D	D	L	R	D-a

**PENNSYLVANIA RAILROAD NEW YORK, NEW HAVEN & HARTFORD R. R.
WASHINGTON TO NEW YORK-BOSTON**

Eastern Time	108 Daily	112 Daily	120 Daily	124 Daily	126 Daily	174 Daily	130 Daily	176 Daily	132 Daily	142 Daily	170 Daily	152 Daily	168 Daily	134 Daily	154 Daily	156 Daily	158 Daily	100 Su only	160 Wk Day	198 Wk Day	150 Wk Day	166 Daily	172 Daily	102 Daily	
Lv WASHINGTON, D. C.	AM 2 10	AM 5 05	AM 6 00	AM 7 00	AM 8 00	AM 9 00	AM 10 00	AM 11 00	Noon 12 00	PM 1 00	PM 2 00	PM 3 00	PM 4 00	PM 5 00	PM 6 00	PM 7 00	PM 8 00	PM 9 00	PM 10 00	PM 11 00	PM 12 00	PM 1 00	PM 2 00	PM 3 00	PM 4 00
Ar Baltimore, Md. (Pa. Sta.)	2 55	5 50	6 41	7 41	8 41	9 41	10 41	11 41	12 43	1 43	2 43	3 40	4 42	5 42	6 43	7 43	8 43	9 43	10 43	11 43	12 43	1 43	2 43	3 43	4 43
" Wilmington, Del.	4 05	7 00	7 44	8 45	9 49	10 43	11 46	12 44	1 48	2 50	3 44	4 39	5 44	6 44	7 46	8 46	9 46	10 46	11 46	12 46	1 46	2 46	3 46	4 46	5 46
" Philadelphia, Pa. (Pa. Sta., 30th St.)	4 36	7 31	8 14	9 15	10 23	11 12	12 16	1 13	2 21	3 18	4 13	5 06	6 23	7 26	8 27	9 29	10 29	11 29	12 29	1 29	2 29	3 29	4 29	5 29	6 29
" Philadelphia, Pa. (Broad St.)	5 30	8 25	9 08	10 09	11 17	12 26	1 22	2 31	3 33	4 22	5 15	6 33	7 34	8 37	9 39	10 39	11 39	12 39	1 39	2 39	3 39	4 39	5 39	6 39	7 39
" North Philadelphia, Pa.	4 50	7 46	8 24	9 25	10 33	11 21	12 26	1 22	2 31	3 33	4 22	5 15	6 33	7 34	8 37	9 39	10 39	11 39	12 39	1 39	2 39	3 39	4 39	5 39	6 39
" Trenton, N. J.	5 05	8 01	8 52	9 53	11 01	12 08	1 04	2 12	3 00	4 03	5 00	6 00	7 02	8 01	9 04	10 04	11 04	12 04	1 04	2 04	3 04	4 04	5 04	6 04	7 04
" Elizabeth, N. J.	6 05	9 09	9 40	10 38	11 49	12 28	1 45	2 29	3 49	4 50	5 29	6 20	7 12	8 03	9 04	10 04	11 04	12 04	1 04	2 04	3 04	4 04	5 04	6 04	7 04
Ar Jersey City, N. J. (H. & M. Sta.)	6 27	9 23	10 11	11 11	12 11	12 59	2 11	2 58	4 14	5 18	6 01	6 42	7 06	8 32	9 17	10 02	11 18	12 02	1 02	2 02	3 02	4 02	5 02	6 02	7 02
" New York, N. Y. (Hudson Ter.)	6 30	9 26	10 14	11 14	12 14	1 02	2 14	3 01	4 17	5 21	6 01	6 45	7 09	8 35	9 20	10 05	11 21	12 05	1 05	2 05	3 05	4 05	5 05	6 05	7 05
Ar New York, N. Y. (Pa. Sta.)	6 25	9 15	9 55	10 55	12 05	12 45	2 00	2 45	4 05	5 05	6 05	6 35	7 00	8 20	9 05	10 05	11 15	12 05	1 05	2 05	3 05	4 05	5 05	6 05	7 05
" Boston, Mass. (NYNH&H)	x11 55	x 2 45	x 3 25	x 4 00	x 5 45	x 7 40	x 8 40	x 9 40	x10 25	x11 25	x12 25	x 1 15	x 2 15	x 3 15	x 4 15	x 5 15	x 6 15	x 7 15	x 8 15	x 9 15	x 10 15	x 11 15	x 12 15	x 1 15	x 2 15
SEE REFERENCE MARKS	B	M	Y	Y	YY	F	YY	N	YY	Y	I	Y	G	D	YY	VV	Y	Y	EE	EE	FF	P	A		

a Has coaches Saturday night only. b Stops to discharge passengers daily and to receive only Pullman passengers daily except Sundays. d Change trains at New Haven. e No baggage on this train. g Stops to receive passengers. p Stops only to discharge passengers. s Arriving time of Washington-Philadelphia sleeping car. t Stops to receive passengers for points south of Philadelphia. x Change trains at New York. u Daily except Monday. v Via Springfield and B. & A. # On Sundays and holidays leaves five minutes earlier. c On holidays leaves five minutes earlier. † Except Sunday. w Sleeping Cars; has Coaches Sundays only eastbound; daily westbound. ee Parlor Buffet Lounge and Coaches. § Sunday only. A Sleeping Car and Coaches. B Sleeping Cars only. D Coaches only. D-a "The Owl". Sleeping Cars; has Coaches Sundays only eastbound; daily westbound. EE Parlor Buffet Lounge and Coaches. F Parlor Cars, Dining Car and Coaches. FF Parlor Car and Coaches. H Parlor Car, Grill and Coaches. I "The Patriot," through Boston-Washington train via Hell Gate Bridge Route; Dining Car, Parlor Car, Parlor Bar Lounge Cars and Coaches. K "The William Penn," through Parlor Car, Diner and Coaches. J "Washingtonian" and "Montrealer" to and from Montreal; Sleeping Cars, Dining Car, Parlor Car, Parlor Bar Lounge Cars and Coaches. L "The Federal," through Boston-Washington train via Hell Gate Bridge Route; Sleeping Cars and Coaches. M Dining Car and Coaches. N "The Senator," through Boston-Washington train via Hell Gate Bridge Route; Sleeping Cars and Coaches. O "Merchant Limited," Parlor Cars, Dining Car, Coaches; Extra Fare train. P "The Federal," through Washington-Boston train via Hell Gate Bridge Route; Sleeping Cars and Coaches. Q VV Parlor Bar Car and Buffet Coach. X "Yankee Clipper," Parlor Cars, Grill Car, Diner and Coaches. Y Parlor Car, Parlor Bar Lounge Car, Dining Car and Coaches. YY Parlor Car, Parlor Buffet Lounge Car, Dining Car and Coaches. local train service between Springfield, New Haven and New York. * Will not run July 4 and September 3. z Change trains at New Haven Arr. 8 55AM on Sun. bb Frequent

TABLE 17

PENNSYLVANIA RAILROAD

CHICAGO-PITTSBURGH-WASHINGTON

54	2	b58	22	Central Standard Time	Daily	33-63	b59	1	71	55
11 15	6 00	3 40	12 30	Lv CHICAGO, ILL.	Ar	6 10	7 30	9 30	12 25	3 40
1 43	8 21	6 07	2 56	" Fort Wayne, Ind.	"	3 18	4 56	6 50	9 38	1 02
		8 06	5 04	" Lima, O. (EST)	"			6 52	9 42	1 06
8 55	2 54	12 41	10 20	" PITTSBURGH, PA.	"	9 10	12 17	2 05	3 49	7 55
11 25	5 26	3 10	12 49	" Altoona	"	6 40	9 48	11 36	1 20	5 20
2 00	8 10	5 31	3 35	" Harrisburg	"	4 05	7 25	9 04	10 30	1 25
2 44	8 47	6 07	4 17	" York, Pa.	Ar	3 26	6 45	8 22	9 47	12 44
4 20	10 40	d7 47	5 55	Ar Baltimore	Lv	1 56	5 15	6 52	8 17	11 12
5 10	11 35	8 35	6 50	Ar WASHINGTON, D. C.	Lv	1 10	4 30	6 05	7 30	10 15

BUFFALO-WASHINGTON-VIA CANANDAIGUA

696	Eastern Standard Time	Daily	575
* 4 15	Lv BUFFALO, N. Y.	NTC	Ar 11 45
7 10	" Rochester	"	Ar 10 05
* 8 55	" Canandaigua	PRR	Ar 7 50
* 11 20	" Elmira, N. Y.	"	Ar 5 15
2 21	" Williamsport, Pa.	"	Ar 1 05
3 27	" Sunbury	"	Ar 12 14
4 40	" Harrisburg, Pa.	"	Ar 10 30
7 38	Ar Baltimore, Md.	Lv	8 17
8 25	Ar WASHINGTON, D. C.	Lv	* 7 30

ST. LOUIS-INDIANAPOLIS-WASHINGTON

32	e64	30	4	66	Central Standard Time	Daily	25-27	33	31	e65	3	67	51-11
6 30	1 00	12 30	10 00	9 00	Lv ST. LOUIS, MO.	Ar	6 45	8 10	12 10	1 40	3 00	4 10	10 00
9 17	3 45	3 17	12 50	11 44	" Terre Haute, Ind.	"	3 05	5 12	9 10	10 43	11 52	1 02	6 45
10 45	5 05	4 50	2 10	1 02	" Indianapolis, Ind.	"	1 30	3 48	7 45	9 23	10 32	11 42	5 15
1 39	9 35	7 54	5 16	4 05	" Dayton, O. (EST)	"	11 52	2 42	4 22	6 10	9 27	10 37	4 00
3 30	8 05	9 18	6 38	5 35	" Columbus, O.	"	10 00	1 15	5 15	6 43	8 00	9 10	2 00
8 00	1 40	1 14	3 48	9 52	" Pittsburgh, Pa.	"	3 55	9 10	1 19	2 28	4 40	7 00	
10 37	4 17	3 48	12 30	3 48	" Altoona, Pa.	"	1 16	6 40	10 50	3 30	2 09	4 00	
2 00	6 49	6 29	3 35	7 26	" Harrisburg, Pa.	"	10 25	4 05	8 20	11 05	11 05	1 25	
2 44	7 26	6 49	4 17	7 26	" York, Pa.	"	9 39	3 25	8 20	10 22	12 44		
4 20	9 02	9 02	6 37	5 55	Ar Baltimore, Md.	Lv	8 03	1 56	6 10	6 52	8 17	8 52	11 12
5 10	9 50	9 50	7 25	6 50	Ar WASHINGTON, D.C.	Lv	7 10	1 10	5 25	6 05	7 30	8 05	10 15

CLEVELAND-PITTSBURGH-WASHINGTON

10-38	38	318-74	Eastern Standard Time	Daily	25-361	71-9	39
7 45	8 00	9 25	Lv CLEVELAND, O.	Ar	6 50	7 15	7 30
9 15	11 07	9 25	" Akron, O.	"	6 45	7 15	8 05
11 10	11 10	1 00	" Youngstown, O.	"	3 55	3 49	
4 15	4 15	6 15	" PITTSBURGH, PA.	"	10 25	10 30	
6 37	6 37	8 35	" Harrisburg, Pa.	"	8 03	8 17	8 52
7 25	7 25	9 30	Ar Baltimore, Md.	Lv	7 10	7 30	8 05
			Ar WASHINGTON, D. C.	Lv			

DETROIT-PITTSBURGH-WASHINGTON

106-72	68	Eastern Standard Time	Daily	33-105	69
10 40	5 40	Lv DETROIT, MICH.	Ar	7 40	7 55
12 20	7 00	" Toledo, O.	"	6 00	6 38
8 15	11 59	" PITTSBURGH, PA.	"	9 10	1 35
2 00	5 15	" Harrisburg, Pa.	"	4 05	8 20
4 20	7 38	Ar Baltimore, Md.	Lv	1 56	6 10
5 10	8 25	Ar WASHINGTON, D. C.	Lv	1 10	5 25

BUFFALO-WASHINGTON-VIA OLEAN

574	570	Eastern Standard Time	Daily	571	575
7 30	7 20	Lv BUFFALO, N. Y.	Ar	7 40	7 20
9 36	9 12	" Olean, N. Y.	"	5 42	5 36
1 40	1 45	" Williamsport, Pa.	"	1 00	1 05
4 15	4 13	" Harrisburg, Pa.	"	10 25	10 30
6 37	6 55	Ar Baltimore, Md.	Lv	8 03	8 17
7 25	7 50	Ar WASHINGTON, D. C.	Lv	7 10	7 30

BOSTON AND ALBANY RAILROAD

43-55	559-59	53	575-75	Eastern Standard Time	Daily	66-22	54-554	58-90	28-006	56-42
9 30	3 15	11 00	6 30	Lv BOSTON, MASS.	Ar	2 45	5 10	8 45	11 30	6 10
10 57	4 24	12 05	7 38	" Worcester	"	1 36	4 00	7 35	9 32	4 53
11 15	5 45	1 30	9 00	" Springfield, Mass. (NYNH&H)	"	11 15	2 35	6 12	8 19	3 20
13 50	7 21	3 03	10 36	" New Haven, Conn.	"	9 57	1 03	4 45	6 45	1 20
16 12	8 58	4 44	11 58	Ar NEW YORK, N. Y. (G. C. Ter.)	Lv	8 30	11 30	3 10	5 00	11 10

NEW YORK-PHILADELPHIA-NORFOLK

469	115-455	Eastern Standard Time	Daily	454-154	468
9 00	8 30	Lv NEW YORK, N. Y.	Ar	9 05	7 20
10 35	9 57	" N. PHILA., PA.	"	7 34	5 48
11 10	10 07	" PHILA., PA. (30th St.)	"	7 23	5 22
11 56	10 50	" Wilmington, Del.	"	6 30	4 45
6 00	3 35	Ar Cape Charles, Va.	Lv	1 30	11 25
6 55	3 55	Ar Cape Charles, Va.	Lv	1 10	10 35
8 55	5 55	Ar Fort Monroe (Old Comfort)	Lv	11 20	8 40
9 45	6 50	" NORFOLK, VA.	Lv	10 20	7 45

FLORIDA EAST COAST RAILWAY

75	29	5	1	a3	7	Eastern Standard Time	30	2	a6	8	a4	76
10 30	10 00	9 45	8 30	8 25	4 10	Lv JACKSONVILLE, Ar	6 10	4 15	7 00	8 30	12 30	7 00
11 07	10 44	10 21	9 06	9 01	4 46	Ar St. Augustine	5 10	3 31	6 16	7 45	11 48	6 11
12 24	1 12	1 13	10 02	9 54	5 39	Ar Daytona Beach	2 55	2 38	5 23	6 49	10 54	5 03
4 47	6 30	3 03	1 51	4 6	9 31	Ar W. Palm Beach	9 00	10 52	1 37	2 51	7 07	12 03
7 00	9 20	4 45	3 30	3 25	11 10	Ar MIAMI	6 40	9 15	12 01	1 10	5 30	10 10

a Except every 3rd day. b Sleeping Cars and Reserved Seat Coaches. f Flag stop. d Stops only to discharge passengers. e All Seat Reserved-Special Service Charge. * On Sundays leave Canandaigua 9 10 PM, Elmira 11 18 PM † Except Sunday. p On Sundays arrives 9 36 AM. * Daily. * Week days except holidays.

RICHMOND, FREDERICKSBURG AND POTOMAC RAILROAD

95	77	107	93	89	9	Eastern Standard Time	110	78	96	108	14	16	34	
10 00	6 25	3 15	9 00	5 35	12 05	Lv WASHINGTON, D. C.	Ar	4 00	7 00	10 00	1 50	2 25	7 35	8 30
10 19	6 44	3 34	9 18	5 54	12 24	" Alexandria	"	x 3 37	6 37	9 37	1 27	2 02	7 12	8 07
10 50	7 17	4 05	9 50	6 25	12 56	" Quantico	"		6 00	9 00	12 52	1 33	6 40	7 27
11 17	7 43	4 35	10 17	6 50	1 22	" Fredericksburg	"	2 41	5 35	8 35	12 28	1 13	6 19	6 51
		5 23				" Ashland	"					12 28	5 33	
	9 00	6 05		8 00		Ar RICHMOND, VA. (Broad St.)	Lv		4 20			12 10	5 15	
12 48		6 02	11 50		3 05	Ar RICHMOND, VA. (Main St.)	Lv	1 10		7 00	11 05			5 10

x Stops on signal to discharge revenue passengers.

f-Stops on Signal

BALTIMORE AND OHIO RAILROAD

22	8	20	18	*6	*26	10	Daily	21	9	*5	*25	19	17	7
10 15				4 00	3 40	11 00	Lv CHICAGO (CST) Ar		6 15	7 00	7 20			2 35
11 40	5 20						" Detroit (EST)		7 20			7 50		6 40
1 30	6 40						" TOLEDO		5 30			6 30		4 10
7 15		8 45					" CLEVELAND	7 55					7 00	11 30
5 35	9 55	9 46					Lv AKRON		11 45		1 50	3 10	5 52	8 53
8 37	6 35	10 55	10 45	12 10	11 54	8 30	" Youngstown	6 30	10 25	12 50	2 15	4 48	7 48	
10 30	8 25	12 45	12 29	1 40	1 30	10 35	" PITTSBURGH	4 40	8 30	11 07	11 15	12 51	3 13	6 00
4 05	1 55	6 13	5 48		6 40	4 30	Ar Martinsburg	10 35	2 55			7 24	10 52	12 25
5 45	3 35	7 50	7 20	8 30	8 15	6 25	Ar WASHINGTON	9 05	1 15	4 30	4 40	5 50	8 30	10 50

WASHINGTON-CINCINNATI-ST. LOUIS

12	4	2	Daily	11	1	3	
11 30	1 10	10 05	Lv ST. LOUIS (CST)	Ar	7 40	1 00	4 15
8 50	9 25	6 25	Lv CINCINNATI (EST)	"	10 30	7 15	9 55
11 23	11 24	8 28	" Chillicothe	"	8 06	5 07	7 50
1 40	1 26	10 28	" Parkersburg	"	5 57	3 12	5 53
3 45	3 23	12 27	" Clarksburg	"	3 53	1 05	3 52
11 05	9 50	7 05	Ar Washington	Lv	8 00	6 30	9 30

* Pullman cars only.

* Coaches only.

†-Except Sunday.

CHESAPEAKE & OHIO RAILWAY

47	41	43	Eastern Standard Time	Daily	42	4-46	116	48
7 25	1 45	6 45	Lv NORFOLK, VA.	Ar	12 20	6 00		10 20
9 00	3 20	8 15	" Newport News	"	10 50	4 30		8 50
10 35	4 55	9 50	Ar RICHMOND	Lv	9 15	2 55		7 15
10 55	5 25	10 50	Lv RICHMOND	Ar	8 45	2 30	5 25	
1 10	8 10	1 25	Ar Charlottesville	Lv	6 45	11 30		
9 52	3 47	9 55	" Charleston	"	10 40	4 00		
10 50	4 43	11 05	Ar Huntington	Lv	9 40	2 55	</	

TABLE 18

CANADIAN AND NEW ENGLAND CITIES—NEW YORK—WASHINGTON

QUEBEC-MONTREAL-NEW YORK

PM	10	Lv Quebec (Palais Sta.)	PNL	Ar	x 11 00
x 4 00	Lv Ottawa (Union Sta.)	CN	Ar	x 7 15	
d 7 35	Lv Montreal (Central Sta.)	"	Ar	6 25	
8 18	Lv St. Johns—St. Jean	"	Ar	5 02	
9 41	Lv St. Albans	CVT	Ar	8 59	
5 23	Lv New Haven	NYN&H	Ar	7 25	
6 55	Ar New York (Pa. Sta.)	PRR	Lv	3 10	
11 15	Ar Washington	"	Lv	3 10	

QUEBEC-MONTREAL-NEW YORK

PM	11 00	5 15	Lv Quebec	(EST)	CP	Ar	5 25	1 10
7 40	9 10	9 15	Lv Montreal	"	D&H	Ar	7 35	8 00
10 00	11 02	"	Lv Plattsburg	"	"	Ar	4 58	5 12
2 02	2 56	"	Lv Saratoga Springs	"	"	Ar	1 10	1 03
3 00	3 45	"	Lv Troy	"	"	Ar	12 20	11 50
3 28	"	3 20	Lv Albany	"	"	Lv	9 00	8 00
6 40	7 20	6 20	Ar New York (G.C.Ter.)	"	NYC	Lv	9 00	10 50
AM	PM	AM					AM	PM

MONTREAL-BURLINGTON-NEW YORK

PM	8 25	8 45	Lv Montreal (Cent. Sta.)	CX	Ar	6 50	8 35
8 46	9 06	"	Lv St. Lambert	"	Ar	6 28	8 13
9 11	9 31	"	Lv St. Johns—St. Jean	"	Ar	6 00	7 44
11 15	11 30	"	Lv Burlington	RUT	Ar	3 50	5 33
1 05	1 25	"	Lv Rutland	"	Ar	1 53	3 40
3 30	4 00	"	Lv Troy	"	Ar	10 55	1 20
5 42	6 21	"	Ar Harmon	NYC	Lv	8 00	10 48
6 40	7 20	"	Ar New York (G.C.Ter.)	"	Lv	7 10	10 00
AM	PM					AM	PM

PORTLAND-NEW YORK

PM	8 30	14 20	AM	7 20	Lv Portland	(EST)	B&M	Ar	k 7 10	11 50	5 40	6 45
9 48	"	8 16	"	8 16	Lv Dover	"	"	Ar	k 5 36	10 53	4 21	5 36
10 32	"	"	"	"	Lv Haverhill	"	"	Ar	k 4 47	"	3 45	5 00
6 20	9 30	"	"	"	Lv Boston (North Sta.)	"	"	Ar	k 3 55	9 30	"	"
8 00	10 00	"	"	"	Lv Boston (South Sta.)	"	"	Ar	k 2 45	7 40	"	"
6 30	1 10	"	"	"	Ar New York (G.C.Ter.)	"	"	Lv	"	8 00	9 00	"
2 20	"	"	"	"	Ar New York (Pa. Sta.)	"	PRR	Lv	10 00	3 00	Ex. Sa.	Sat.
AM	AM	PM							AM	PM	PM	PM

SPRINGFIELD-HARTFORD-NEW YORK

PM	3 15	PM	1 30	AM	6 43	AM	5 30	Lv Springfield	(EST)	NYN&H	Ar	9 14	PM	12 48	PM	5 30	PM	6 12
3 47	2 04	7 15	7 02	7 02	7 02	7 02	7 02	Lv Hartford	"	"	Ar	7 49	12 12	4 33	5 37	7 40	4 00	
3 34	3 03	8 03	7 00	7 00	7 00	7 00	7 00	Lv New Haven	"	"	Ar	7 49	11 08	3 25	4 40	4 00	4 00	
"	3 24	x 8 28	"	"	"	"	"	Lv Bridgeport	"	"	Ar	7 23	10 50	3 07	4 20	4 00	4 00	
"	3 58	x 9 01	"	"	"	"	"	Lv Stamford	"	"	Ar	6 47	10 16	2x19	3 56	4 00	4 00	
5 55	4 44	9 25	8 25	8 25	8 25	8 25	8 25	Ar New York (G.C.Ter.)	"	"	Lv	6 00	9 30	2 00	3 10	4 00	4 00	
x 6 20	"	"	"	"	"	"	"	Ar New York (Pa. Sta.)	"	PRR	Lv	6 00	9 30	2 00	x 3 10	4 00	4 00	
PM	PM	AM	AM	AM	AM	AM	AM				AM	AM	PM	PM	PM	PM	PM	

ATLANTA—BIRMINGHAM—MEMPHIS—THE SOUTHWEST—WEST

ATLANTA-NEW ORLEANS

7 15PM	9 40AM	6 50AM	Lv Atlanta	(EST)	A&WP	Ar	1 15PM	11 40PM	8 20AM
10 40PM	12 35PM	10 30AM	Ar Montgomery	(CST)	"	Ar	7 40AM	6 00PM	2 35AM
5 50AM	4 45PM	4 45PM	Ar Pensacola	"	L&N	Lv	12 40AM	12 30PM	8 30PM
4 10AM	4 30PM	3 40PM	Ar Mobile	"	"	Lv	2 45AM	1 58PM	8 45PM
8 05AM	7 55PM	7 30PM	Ar New Orleans	"	"	Lv	11 00PM	10 55AM	6 00PM

ATLANTA-CHATTANOOGA-NASHVILLE

6 30PM	9 35AM	9 00PM	Lv Atlanta	(EST)	NC&STL	Ar	7 45PM	8 35AM	8 25AM
9 30PM	1 30PM	1 25AM	Ar Chattanooga	(EST)	"	Lv	4 10PM	5 30AM	3 50AM
11 40PM	5 10PM	6 30AM	Ar Nashville	(CST)	"	Lv	10 30AM	1 20AM	9 00PM

BIRMINGHAM-NEW ORLEANS

AM	6 05	7 45	PM	8 20	4 05	Lv Birmingham	(CST)	L&N	Ar	11 50	7 55	8 45	7 35
7 55	10 15	10 20	7 35	"	"	Ar	Montgomery	"	Lv	8 00	5 55	6 30	5 45
11 40	3 40	3 25	"	"	"	Ar	Mobile	"	Lv	2 45	12 55	12 25	1 58
3 10	7 30	7 10	"	"	"	Ar	New Orleans	"	Lv	11 00	9 00	8 20	10 55
PM	PM	AM	PM							AM	PM	AM	AM

ATLANTA-COLUMBUS-MACON-ALBANY

PM	6 55	11 10	Lv Atlanta	(EST)	C OF GA	Ar	5 55	10 20	PM	PM
9 45	2 05	"	Ar Columbus	"	"	Lv	3 00	7 30	"	"
8 00	6 00	10 40	Lv Atlanta	(EST)	C OF GA	Ar	8 00	8 40	1 40	6 05
10 15	8 05	1 00	Ar Macon	"	"	Lv	5 03	6 10	11 35	3 30
10 30	9 05	8 00	Lv Atlanta	(EST)	C OF GA	Ar	8 00	8 40	6 05	6 30
6 25	2 35	1 00	Ar Albany	"	"	Lv	2 10	3 45	12 45	11 05

BIRMINGHAM-NEW ORLEANS

7 45AM	8 50PM	e 1 35PM	Lv Birmingham	(CST)	SOU RY	Ar	e 3 10PM	7 05AM	5 30PM
9 15AM	10 15PM	2 46PM	Ar Tuscaloosa	"	"	Lv	1 59PM	5 32AM	3 34PM
12 30PM	1 15AM	4 40PM	Ar Meridian	"	"	Lv	12 15PM	2 55AM	12 35PM
3 30PM	3 55AM	6 30PM	Ar Hattiesburg	"	"	Lv	10 30AM	12 20AM	9 25AM
7 00PM	7 30AM	e 9 10PM	Ar New Orleans	"	"	Lv	e 8 00AM	9 00PM	6 00AM

Savannah-Millien-Augusta-Macon

9 30PM	8 00PM	8 00AM	Lv Savannah	(EST)	C OF GA	Ar	11 30AM	5 10PM	11 40PM
11 30PM	10 00PM	9 21AM	Ar Millien	"	"	Lv	9 21AM	3 00PM	10 15PM
"	11 50PM	y 10 55AM	Ar Augusta	"	"	Lv	7 50AM	y 1 20PM	"
3 35AM	"	11 30AM	Ar Macon	"	"	Lv	"	12 05PM	g 8 10PM

MEMPHIS-ARKANSAS-TEXAS CITIES

8 30PM	8 00AM	"	Lv Memphis	(CST)	MO PAC	Ar	7 00PM	6 30AM
12 20AM	11 25AM	"	Lv Little Rock	"	"	Lv	3 30PM	2 30AM
7 30AM	8 40PM	"	Ar Dallas	T&P	Lv	7 20AM	6 15PM	
8 30AM	10 05PM	"	Ar Fort Worth	"	Lv	6 15AM	5 15PM	
10 00AM	5 45AM	"	Ar Houston	"	Lv	12 01AM	4 00PM	
11 40AM	7 10AM	"	Ar San Antonio	"	Lv	8 15PM	2 10PM	

MEMPHIS-ARKANSAS-TEXAS CITIES

"	9 10PM	Lv Memphis	(CST)	ST. L. SW	Ar	6 45AM
"	12 45AM	Ar Pine Bluff	"	"	Lv	2 54AM
"	5 25AM	Ar Texarkana	"	"	Lv	10 45PM
"	11 20AM	Ar Dallas	"	"	Lv	5 00PM

MEMPHIS-ST. LOUIS (Via Frisco Lines)

"	7 00AM	c 11 15PM	Lv Memphis	(CST)	FRISCO	Ar	5 55PM	7 15AM
"	3 40PM	7 40AM	Ar St. Louis	"	"	Lv	8 48AM	c 11 00PM

HOW TO GET TO BRUNSWICK—SEA ISLAND—JEKYL ISLAND, GA.

MEMPHIS-ARKANSAS-OKLAHOMA CITY-EL PASO-LOS ANGELES

AM	9 00	PM	8 00	Lv Memphis	(CST)	CR I&P	Ar	7 05	6 50
"	11 25	11 10	"	Ar Little Rock	"	Lv	4 30	3 20	
"	1 20	"	"	Ar Hot Springs	"	Lv	2 45	"	
"	9 30	9 30	"	Ar Oklahoma City	"	Lv	8 00	5 05	
"	"	2 45	"	Ar El Paso	(MST)	SO PAC	Lv	10 50	
"	"	11 30	"	Ar Los Angeles	(PST)	"	Lv	11 30	

DAILY TRAINS

9-1 PM	57-157 PM	7 AM	21 AM	Lv New York	(EST)	PRR	Ar	9 15	d 10 30	c 1 45	5 45
7 30 d	1 55	10 30	9 30	Lv North Philadelphia	"	Ar	7 46 d	9 01	c 12 17	4 22	
8 57 d	3 25	12 04	10 57	Lv Philadelphia (30th St. Sta.)	"	Ar	7 31 d	8 46	c 12 07	4 13	
9 07 d	3 35	12 20	11 07	Lv Baltimore	"	Ar	5 50 d	7 13	c 10 36	2 42	
10 40 d	5 08	1 58	12 35	Lv Washington	"	Ar	4 08 d	6 10	9 20	1 50	
12 05 d	6 10	3 15	1 50	Lv Richmond (Main St. Sta.)	SAL	Ar	12 45 g	3 30	6 40	10 45	
3 05 g	8 48	6 12	4 27	Lv Thalmann	"	Ar	10 02	H 5 10	H 8 29	10 14	
6 17 H	6 54	6 15	H 2 10	Lv Thalmann	"	Ar	"	"	"	"	
"	"	"	"	Lv Brunswick	"	Ar	"	"	"	"	
6 17 H	6 54	6 15	H 2 10	Lv Thalmann	SAL	Ar	10 02	H 5 10	H 8 29	10 14	
8 10	8 15	7 50	3 30	Ar Jacksonville	"	Lv	8 30	4 00	7 20	9 00	
6 30	2 00	9 22	Ar W. Palm Beach-Palm Beach	"	Lv	10 25	10 19	1 27	"	"	
8 30	3 35	11 00	Ar Miami	"	Lv	8 45	9 00	12 05	"	"	
15 45	12 40	1 30	Ar Tampa	"	Lv	\$10 30	11 30	"	2 10	"	
w 8 35	4 10	4 10	Ar St. Petersburg	"	Lv	"	9 45	"	"	"	
"	"	"	Ar Sarasota	"	Lv	w 8 05	9 05	"	w 11 50	"	
11 20	"	"	Ar Boca Grande	"	Lv	3 10	"	"	"	"	
"	"	"	Ar Useppa Island	"	ACHT	Lv	"	"	"	"	

MEMPHIS-KANSAS CITY-DENVER

"	7 15PM	Lv Memphis	(CST)	FRISCO	Ar	9 45AM
"	7 30AM	Ar Kansas City	"	"	Lv	11 30PM
11 10PM	6 45PM	Ar Kansas City	"	CR I&P	Ar	12 45AM
"	"	Ar Denver	(MST)	"	Lv	10 00PM
11 30PM	9 30PM	Lv Kansas City	(CST)	UN PAC	Ar	11 15PM
3 30PM	7 45AM	Ar Denver	(MST)	"	Lv	8 50AM

MEMPHIS-HOT SPRINGS-EL PASO-LOS ANGELES

8 00AM	8 30PM	Lv Memphis	(CST)	MO PAC	Ar	7 00PM	6 30AM
12 45PM	4 00AM	Ar Hot Springs	"	"	Lv	1 45PM	8 00PM
1 15PM	10 00PM	Ar El Paso	(MST)	T&P	Lv	12 50AM	8 30PM
7 35AM	4 30PM	Ar Los Angeles	(PST)	SO PAC	Lv	"	"

a Via bus. b Sleeper parked until 8:00 A. M. c Sleeper open 9:30 P. M.
d Stops to receive passengers for St. Albans and beyond.
e "The Southerner", reserved seat streamlined coach train, reservation charge applying.
g Coach Streamliner—Seats reserved. k On Sunday

EXPLANATION OF CHARACTERS

- A Stops to receive and discharge passengers for and from Richmond and beyond; also for and from Atlanta and beyond.
- a Stops to receive and discharge passengers for and from Raleigh and beyond; also for and from points beyond Atlanta.
- aa Stops on signal to receive or discharge revenue passengers.
- B Stops to discharge passengers from Birmingham and beyond.
- b On Sunday arrive New Haven 4:35 P.M.; Providence 7:01 P.M.; Boston 8:00 P.M. On Friday arrives Providence 7:09 P.M.; Boston 8:05 P.M.
- bb Stops only on advance notice to Ticket Agent to receive and discharge passengers for and from points south of Richmond where trains are scheduled to stop.
- C Stops to receive and discharge passengers for and from West Palm Beach and Miami; also for and from Jacksonville and beyond.
- c Stops only to receive and discharge passengers for and from points south of Washington.
- cc Stops to receive passengers only.
- D Stops to discharge passengers from Richmond and beyond and to receive passengers for Jacksonville and beyond.
- d Stops only to receive and discharge passengers for and from points south of Richmond.
- dd Stops to discharge passengers only.
- E Stops to receive and discharge passengers for and from Norlina, Jacksonville and beyond.
- e Sleeper open 10:00 P.M.
- ee Stops to receive and discharge passengers for and from Dade City, Plant City, Tampa and points south; also for and from Wildwood, Ocala, Jacksonville and points north.
- F Stops to receive and discharge passengers for and from Washington and beyond.
- f Stops to discharge passengers on notice to Conductor; to receive passengers on signal or on notice to Ticket Agent.
- ff Stops to discharge passengers from Richmond and beyond and to receive for points beyond Wildwood where train stops.
- G Stops to discharge passengers from West Savannah and beyond and to receive for West Palm Beach and Miami.
- g Stops to receive and discharge passengers for and from Columbia and beyond.
- gg Stops to discharge passengers from points beyond Wildwood and to receive for Petersburg and beyond where train stops.
- H Stops to receive and discharge passengers for and from Petersburg and beyond; also for and from points beyond Wildwood where train stops.
- h Stops to receive and discharge passengers for and from Atlanta, Birmingham and beyond.
- hh Stops to receive passengers for Tampa and beyond; also to discharge passengers from north of Jacksonville.
- i Sleeper parked until 7:00 A.M.
- ii Stops to receive and discharge passengers for and from points north of Plant City.
- J Stops on signal to receive revenue passengers for points south of Richmond.
- j Stops to receive and discharge passengers for and from Thalmann and beyond.
- jj Stops to discharge passengers from Wildwood and beyond.
- K Stops to discharge passengers from Savannah and beyond and to receive for Ocala, Tallahassee and beyond.
- k Stops to receive and discharge passengers for and from Richmond, Savannah and beyond.
- kk Stops to discharge passengers from Petersburg and beyond, and to receive passengers for points beyond Wildwood where train stops.
- L Stops to discharge passengers from Petersburg and beyond, and to receive passengers for Wildwood and beyond where train stops.
- ll Stops to receive and discharge passengers for and from West Savannah and beyond.
- M Stops to receive and discharge passengers for and from Savannah and beyond.
- m Stops to receive and discharge passengers for and from Washington, Savannah, Athens and beyond; also for and from Portsmouth line.
- N Stops to receive and discharge passengers for and from Monroe and beyond.
- n Stops to receive and discharge passengers for and from Raleigh and beyond; also for and from Atlanta and beyond.
- nn Stops to receive and discharge passengers for and from Thalmann and beyond; also to receive and discharge passengers for and from West Palm Beach and Miami.
- o Stops to receive passengers for Petersburg and beyond; also to receive passengers for points between West Lake Wales and St. Petersburg; also to receive passengers for points served by "The Gulf Wind."
- oo Stops to discharge passengers from north of Jacksonville and to receive passengers for Tampa and beyond.
- P Stops to receive and discharge passengers for and from Petersburg and beyond; also to and from West Palm Beach and Miami.
- p Stops to discharge passengers from Raleigh and beyond and to receive passengers for Columbia, Monroe and beyond.
- pp Reserved seat coach streamliner.
- Q Stops to receive and discharge passengers for and from Jacksonville and beyond.
- q Stops to receive and discharge passengers for and from Washington, Savannah and beyond.
- qq Stops to discharge passengers from Monroe and points west.
- R Stops to receive passengers for points south of Wildwood at which train stops.
- r Change trains at New Haven.
- r r Via S.A.L. bus between Yulee and Fernandina.
- S Stops to discharge passengers holding tickets from points north of Jacksonville.
- s Stops to discharge passengers from Raleigh and beyond and to receive for Norlina and beyond.
- ss Stops on Saturdays and Sundays only to receive passengers for Birmingham.
- T Stops to receive and discharge passengers for and from points at which train is scheduled to stop.
- t Stops to receive and discharge passengers for and from Raleigh, Hamlet and beyond.
- tt Operates to or from Grand Central Station, New York.
- U Stops to receive and discharge passengers for and from Petersburg and beyond.
- u Stops to discharge passengers from Petersburg, Richmond and beyond, also from stations on Portsmouth line, and to receive for Raleigh and beyond.
- uu Stops to receive passengers for points east of Monroe.
- V The Portsmouth-Atlanta coach and Portsmouth-Atlanta sleeping car, handled on "The Silver Comet" west of Hamlet, are handled between Norlina and Hamlet on "The Sunland," Nos. 7-8, serving intermediate stations Henderson, Wake Forest, Sanford, Southern Pines and Aberdeen, which are not stops for "The Silver Comet" to receive and discharge passengers for and from points west of Hamlet. These cars also serve Raleigh.
- vv Sleeper may be occupied until 7:30 A.M.
- vw Stops to receive and discharge passengers for and from points beyond Wildwood where train stops.
- W Stops to discharge passengers from Tampa and points south.
- w Tamiami Trail Tours Bus—S.A.L. Railroad tickets honored.
- ww Stops to receive and discharge passengers for and from Columbia, Savannah and beyond.
- X Stops to receive and discharge passengers for and from West Palm Beach and Miami.
- x Stops to receive and discharge passengers for and from Savannah, Jacksonville and beyond.
- xx Stops to receive and discharge passengers for and from Richmond and beyond.
- Y Stops to discharge passengers from Tampa and Plant City, and to receive for Jacksonville and beyond.
- y Stops on signal to discharge revenue passengers.
- yy Stops to receive and discharge passengers for and from Raleigh and beyond.
- Z Stops to receive and discharge passengers for and from Jacksonville and beyond; also to receive and discharge passengers for and from points between West Lake Wales and Tampa.
- z Stops to discharge passengers from north of Hamlet and to receive for Columbia and beyond.
- zz Stops to discharge passengers from Columbia and beyond and to receive passengers for Hamlet and beyond.
- ① Stops to discharge passengers from Jacksonville and beyond and from points served by "The Gulf Wind" and from points between Tampa and West Lake Wales.
- ② Stops to discharge passengers from Jacksonville and beyond and from points served by "The Gulf Wind."
- ③ Stops to discharge passengers from Jacksonville and beyond and from points served by "The Gulf Wind"; also to receive passengers from points between Tampa and West Lake Wales.
- ④ Stops to receive passengers for Jacksonville and beyond and to discharge passengers for points between West Lake Wales and Tampa.
- ⑤ Stops to discharge passengers from Jacksonville and beyond, also from Waldo and Ocala, and from points served by the Gulf Wind.
- ⑥ Stops to discharge passengers from Jacksonville and beyond, also from Waldo and Ocala, and from points served by the Gulf Wind; also from points between Tampa and West Lake Wales.
- ⑦ Stops to receive passengers for Jacksonville and beyond and for Winter Haven, Ocala, and Waldo; also for points between West Lake Wales and Tampa.
- ⑧ The Sunset Limited, Extra Fare Streamlined Train—Advance Reservations Necessary.
- ⑨ On Sundays and July 4 and Sept. 3 leaves New York 3:02 A.M., arrives Washington 7:05 A.M.
- ▼ Stops to receive and discharge passengers for and from Jacksonville, Tallahassee and beyond.
- Limited Bus—Seats reserved without extra charge
- † Daily except Sunday.
- Stops to receive and discharge passengers for and from Petersburg and beyond; also stops to receive and discharge passengers for and from points at which this train is regularly scheduled to stop; also to and from Winter Haven, Fort Lauderdale and Hollywood.
- ☒ Stops to discharge passengers from Jacksonville and beyond and from points served by "The Gulf Wind"; also to receive passengers for West Palm Beach and Miami; also to discharge passengers from points between Tampa and West Lake Wales.
- § Sleeper open for 9:00 P.M. occupancy.
- Florida Greyhound Lines Bus—S.A.L. Railroad tickets honored.
- ⊘ Stops to receive passengers for Jacksonville and beyond and to discharge passengers from West Palm Beach and Miami; also to receive passengers for points between West Lake Wales and Tampa.
- ‡ Stops to receive passengers from "The Gulf Wind" destined to points at which train is scheduled to make regular or conditional stops.
- ▲ Sleeper open 9:30 P.M.

RAIL AND PULLMAN FARES FROM PRINCIPAL POINTS ON S. A. L. RAILROAD

SUBJECT TO CHANGE WITHOUT NOTICE

15% Federal Tax Not Included	ONE-WAY		ROUND-TRIP 6 Months Limit		Pullman Lower Berth (See Note)	15% Federal Tax Not Included	ONE-WAY		ROUND-TRIP 6 Months Limit		Pullman Lower Berth (See Note)	15% Federal Tax Not Included	ONE-WAY		ROUND-TRIP 6 Months Limit		Pullman Lower Berth (See Note)
	*In Pullmans	In Coaches	*In Pullmans	In Coaches			*In Pullmans	In Coaches	*In Pullmans	In Coaches			*In Pullmans	In Coaches	*In Pullmans	In Coaches	
ATLANTA, GA. to						FT. LAUDERDALE, FLA. to						SARASOTA, FLA. to					
Baltimore, Md.	\$24.08	\$17.30	\$43.71	\$31.45	\$ 7.60	Portsmouth, Va.	\$35.59	\$24.62	\$64.10	\$44.35	\$10.95	Baltimore, Md.	\$38.13	\$26.56	\$69.01	\$48.10	\$12.25
Birmingham, Ala.	5.83	4.17	10.50	7.55	4.05	Richmond, N. C.	30.05	20.66	54.10	37.20	9.60	*Boston, Mass.	57.70	41.44	108.15	77.86	15.70
Boston, Mass.	43.65	32.18	85.85	61.21	11.95	Raleigh, N. C.	35.53	24.58	64.00	44.25	10.65	Columbia, S. C.	19.72	13.29	35.50	23.95	7.60
Memphis, Tenn.	14.70	10.54	25.30	19.00	4.00	Richmond, Va.	17.97	12.04	32.35	21.70	6.15	New York, N. Y.	46.45	32.79	85.65	60.56	13.80
Monroe, La.	9.57	6.83	17.25	12.30	4.05	Washington, D. C.	39.61	27.50	71.30	49.50	11.95	Philadelphia, Pa.	42.41	29.76	77.57	54.50	12.80
AVON PARK, FLA. to						JACKSONVILLE, FLA. to						Portsmouth, Va.	32.38	22.33	58.30	40.20	10.65
Baltimore, Md.	37.26	25.93	67.46	46.95	10.95	Baltimore, Md.	29.38	20.31	53.26	36.85	8.90	Raleigh, N. C.	26.84	18.37	48.35	33.10	8.90
*Boston, Mass.	56.83	40.81	106.80	76.71	14.90	*Boston, Mass.	48.95	35.19	92.40	66.81	12.80	Richmond, Va.	32.32	22.29	58.20	40.15	10.65
Columbia, S. C.	18.85	12.67	33.95	22.85	6.15	Columbia, S. C.	10.97	7.05	19.75	12.70	4.05	Savannah, Ga.	14.76	9.75	26.60	17.55	6.15
New York, N. Y.	45.58	32.16	84.10	59.41	12.60	New Orleans, La.	21.48	15.33	38.70	27.60	6.55	Washington, D. C.	36.40	25.21	65.55	45.40	11.95
Philadelphia, Pa.	41.54	29.13	78.02	53.35	11.95	New York, N. Y.	37.70	26.54	69.90	49.31	10.65	SAVANNAH, GA. to					
Portsmouth, Va.	31.51	21.70	56.75	39.10	9.60	Philadelphia, Pa.	33.66	23.51	61.82	43.25	10.25	Baltimore, Md.	23.37	16.81	42.46	30.55	7.60
Raleigh, N. C.	25.97	17.74	46.75	31.95	8.60	Portsmouth, Va.	23.63	16.08	42.55	28.95	7.60	*Boston, Mass.	42.94	31.69	81.60	60.31	11.55
Richmond, Va.	31.45	21.66	56.65	39.00	9.00	Raleigh, N. C.	18.09	12.12	32.60	21.85	6.15	Columbia, S. C.	4.96	3.55	8.95	6.40	1.30
Savannah, Ga.	13.89	9.12	25.05	16.45	4.70	Richmond, Va.	23.57	16.04	42.45	28.90	7.60	FT. LAUDERDALE, FLA.	17.97	12.04	32.35	21.70	6.15
Washington, D. C.	35.53	24.58	64.00	44.25	10.65	Savannah, Ga.	6.01	3.50	10.85	6.30	4.05	Jacksonville, Fla.	6.01	3.50	10.85	6.30	4.05
BIRMINGHAM, ALA. to						Washington, D. C.	27.65	18.96	49.80	34.15	8.65	MIAMI, FLA. to					
Atlanta, Ga.	5.83	4.17	10.50	7.55	4.05	Baltimore, Md.	42.21	29.48	76.36	53.35	12.60	Baltimore, Md.	42.21	29.48	76.36	53.35	12.60
Baltimore, Md.	29.16	20.92	52.86	38.00	8.90	*Boston, Mass.	61.78	44.36	115.50	83.11	16.35	*Boston, Mass.	61.78	44.36	115.50	83.11	16.35
*Boston, Mass.	46.48	33.90	87.50	63.91	12.80	Columbia, S. C.	23.80	16.22	42.85	29.20	8.30	Columbia, S. C.	23.80	16.22	42.85	29.20	8.30
Monroe, N. C.	15.40	11.00	27.75	19.80	5.50	New York, N. Y.	50.53	35.71	93.00	65.81	13.80	New York, N. Y.	50.53	35.71	93.00	65.81	13.80
New York, N. Y.	37.48	27.15	69.50	50.41	10.95	Philadelphia, Pa.	46.49	32.68	84.92	59.75	13.80	Philadelphia, Pa.	46.49	32.68	84.92	59.75	13.80
Philadelphia, Pa.	33.44	24.12	61.42	44.35	9.65	Portsmouth, Va.	36.46	25.25	65.65	45.45	11.55	Portsmouth, Va.	36.46	25.25	65.65	45.45	11.55
Portsmouth, Va.	26.78	19.12	48.25	34.45	8.65	Raleigh, N. C.	30.92	21.29	55.70	38.35	9.95	Raleigh, N. C.	30.92	21.29	55.70	38.35	9.95
Raleigh, N. C.	20.65	14.75	37.20	26.55	6.55	Richmond, Va.	36.40	25.21	65.55	45.40	10.95	Richmond, Va.	36.40	25.21	65.55	45.40	10.95
Richmond, Va.	24.85	17.75	44.75	31.95	8.30	Savannah, Ga.	18.84	12.67	33.95	22.85	6.55	Savannah, Ga.	18.84	12.67	33.95	22.85	6.55
Washington, D. C.	27.43	19.57	49.40	35.25	8.65	Washington, D. C.	40.48	28.13	72.90	50.65	11.95	Washington, D. C.	40.48	28.13	72.90	50.65	11.95
BRADENTON, FLA. to						OCALA, FLA. to						SEBRING, FLA. to					
Baltimore, Md.	37.78	26.31	68.36	47.65	12.25	Baltimore, Md.	32.94	22.86	59.66	41.45	10.25	Baltimore, Md.	37.49	26.10	67.86	47.25	10.95
*Boston, Mass.	57.35	41.19	107.50	77.41	15.70	*Boston, Mass.	52.71	37.74	98.80	71.12	14.10	*Boston, Mass.	57.06	40.98	107.00	77.01	14.80
Columbia, S. C.	19.37	13.04	34.90	23.50	7.60	Columbia, S. C.	14.53	9.59	26.20	17.30	5.50	Columbia, S. C.	19.08	12.84	34.35	23.15	6.15
New York, N. Y.	46.10	32.54	85.00	60.11	13.80	New York, N. Y.	41.26	29.09	76.30	53.91	11.95	New York, N. Y.	45.81	32.33	84.50	59.71	12.60
Philadelphia, Pa.	42.06	29.51	76.92	54.05	12.80	Philadelphia, Pa.	37.22	26.06	68.22	47.85	10.95	Philadelphia, Pa.	41.77	29.30	76.42	53.65	11.95
Portsmouth, Va.	32.03	22.08	57.70	39.75	10.65	Portsmouth, Va.	27.19	18.63	48.95	33.55	8.65	Portsmouth, Va.	31.74	21.87	57.15	39.40	9.60
Raleigh, N. C.	26.49	18.12	47.70	32.65	8.90	Raleigh, N. C.	21.65	14.67	39.00	26.45	8.65	Raleigh, N. C.	26.20	17.91	47.20	32.25	8.30
Richmond, Va.	31.97	22.04	57.55	39.70	10.65	Richmond, Va.	27.13	18.59	48.85	33.50	8.90	Richmond, Va.	31.68	21.83	57.05	39.30	9.60
Savannah, Ga.	14.41	9.50	25.95	17.10	6.15	Savannah, Ga.	9.67	6.05	17.25	10.90	4.05	Savannah, Ga.	14.12	9.29	25.45	16.75	4.70
Washington, D. C.	36.05	24.96	64.90	44.95	11.95	Washington, D. C.	31.21	21.51	56.20	38.75	9.95	Washington, D. C.	35.76	24.75	64.40	44.55	10.65
CLEARWATER, FLA. to						RALEIGH, N. C. to						TAMPA, FLA. to					
Baltimore, Md.	37.55	26.16	67.96	47.40	11.55	Atlanta, Ga.	14.82	10.58	26.70	19.05	4.70	Baltimore, Md.	36.79	25.60	66.61	46.35	11.55
*Boston, Mass.	57.12	41.04	107.10	77.16	15.40	Baltimore, Md.	11.36	8.22	20.81	15.10	4.05	*Boston, Mass.	56.36	40.48	105.75	76.11	15.40
Columbia, S. C.	19.14	12.90	34.50	23.25	6.55	Birmingham, Ala.	20.65	14.75	37.20	26.55	6.55	Columbia, S. C.	18.38	12.34	33.10	22.25	6.55
New York, N. Y.	45.87	32.39	84.60	59.86	12.80	*Boston, Mass.	30.93	23.10	59.95	44.86	8.30	New York, N. Y.	45.11	31.83	83.25	58.81	12.80
Philadelphia, Pa.	41.83	29.36	76.52	53.60	12.25	Columbia, S. C.	7.12	5.08	12.85	9.15	4.05	Philadelphia, Pa.	41.07	28.80	75.17	52.75	12.25
Portsmouth, Va.	31.80	21.93	57.25	39.50	9.95	FT. LAUDERDALE, FLA.	30.05	20.66	54.10	37.20	9.60	Portsmouth, Va.	31.04	21.37	55.90	38.50	9.95
Raleigh, N. C.	26.26	17.97	47.30	32.35	8.30	Jacksonville, Fla.	18.09	12.12	32.60	21.85	6.15	Raleigh, N. C.	25.50	17.42	45.90	31.40	8.30
Richmond, Va.	31.74	21.89	57.15	39.45	9.95	Memphis, Tenn.	29.07	20.75	52.00	37.35	8.90	Richmond, Va.	30.98	21.34	55.80	38.45	9.95
Savannah, Ga.	14.18	9.35	25.55	16.85	5.50	Miami, Fla.	30.92	21.29	55.70	38.35	9.95	Savannah, Ga.	13.42	8.79	24.20	15.85	5.50
Washington, D. C.	35.82	24.81	64.90	44.70	10.95	New Orleans, La.	32.15	22.95	57.90	41.35	9.95	Washington, D. C.	35.06	24.25	63.15	43.65	10.95
COLUMBIA, S. C. to						RICHMOND, VA. to						WEST LAKE WALTON, FLA. to					
Baltimore, Md.	18.41	13.27	33.51	24.20	5.80	Atlanta, Ga.	19.02	13.58	34.25	24.45	6.55	Baltimore, Md.	36.49	25.40	66.06	46.00	10.95
*Boston, Mass.	37.98	28.15	72.65	53.96	10.25	Birmingham, Ala.	24.85	17.75	44.75	31.95	8.30	*Boston, Mass.	56.06	40.28	105.20	75.76	14.80
FT. LAUDERDALE, FLA.	22.93	15.89	41.30	28.10	8.00	Columbia, S. C.	12.60	9.00	22.70	16.20	4.70	Columbia, S. C.	18.08	12.14	32.55	21.90	6.15
Jacksonville, Fla.	10.97	7.05	19.75	12.70	4.05	FT. LAUDERDALE, FLA.	35.53	24.58	64.00	44.25	10.65	New York, N. Y.	44.81	31.63	82.70	58.46	12.60
Miami, Fla.	23.80	16.22	42.85	29.20	8.30	Jacksonville, Fla.	23.57	16.04	42.45	28.90	7.60	Philadelphia, Pa.	40.77	28.60	74.62	52.40	11.95
New York, N. Y.	26.73	19.50	50.15	36.66	8.00	Memphis, Tenn.	32.81	23.40	59.10	42.15	9.95	Portsmouth, Va.	30.74	21.17	55.35	38.15	9.60
Philadelphia, Pa.	22.69	16.47	42.07	30.60	6.90	Miami, Fla.	36.40	25.21	65.55	45.40	10.95	Raleigh, N. C.	25.20	17.21	45.40	31.00	8.00
Portsmouth, Va.	13.07	9.33	23.55	16.80	4.70	New Orleans, La.	36.35	25.95	65.45	46.75	10.95	Richmond, Va.	30.68	21.13	55.25	38.05	9.60
Raleigh, N. C.	7.12	5.08	12.85	9.15	4.05	St. Petersburg, Fla.	32.38	22.94	58.30	40.25	9.95	Savannah, Ga.	13.12	8.59	23.65	15.50	4.70
Richmond, Va.	12.60	9.00	22.70	16.20	4.70	Sarasota, Fla.	32.32	22.29	58.20	40.15	10.65	Washington, D. C.	34.76	24.05	62.60	43.30	10.65
St. Petersburg, Fla.	19.78	13.35	35.65	24.05	6.55	Savannah, Ga.	17.56	12.54	31.65	22.60	6.15	WEST PALM BEACH, FLA. to					
Sarasota, Fla.	19.72	13.29	35.50	23.95	7.60	Tampa, Fla.	30.98	21.34	55.80	38.45	9.95	Baltimore, Md.	39.88	27.81			

SEABOARD AIR LINE RAILROAD COMPANY

TRAFFIC DEPARTMENT DIRECTORY

FREIGHT TRAFFIC DEPARTMENT

G. B. RICE, Vice-President..... S. A. L. R. R. Bldg. Phone 47411... Norfolk 10, Va.
 R. T. ETHERIDGE, Assistant Vice-President
 W. J. HOCK, Assistant to Vice-President
 WARREN T. WHITE, Assistant Vice-President, Industrial Development..... J. P. DERHAM, Jr., Assistant Vice-President, Solicitation and Service

SOLICITATION AND SERVICE

J. P. DERHAM, JR., Assistant Vice-President..... 47411... Norfolk 10, Va.
 E. W. LONG, Freight Traffic Manager..... 47411... Norfolk 10, Va.
 (Solicitation in the North and West)
 J. K. MORGAN, Assistant Freight Traffic Manager..... 47411... Norfolk 10, Va.
 H. G. WALKER, Assistant to Freight Traffic Manager..... 47411... Norfolk 10, Va.
 W. M. CURLEY, Perishable Diversion Agent..... 8121... Savannah, Ga.

EXPRESS

O. W. HALL, Express Traffic Manager..... 47411... Norfolk 10, Va.

INDUSTRIAL

WARREN T. WHITE, Assistant Vice-President..... 47411... Norfolk 10, Va.
 D. T. DAILY, General Industrial Agent..... 47411... Norfolk 10, Va.
 C. M. HAZLEHURST, General Industrial Agent..... 47411... Norfolk 10, Va.
 R. L. MANSFIELD, Assistant General Industrial Agent..... 47411... Norfolk 10, Va.
 B. C. PARKINSON, Industrial Agent..... 47411... Norfolk 10, Va.
 R. N. HOSKINS, Industrial Forester..... 47411... Norfolk 10, Va.

PASSENGER TRAFFIC DEPARTMENT

C. E. BELL, General Passenger Traffic Manager..... S. A. L. R. R. Bldg. Phone 47411... Norfolk 10, Va.
 J. R. GETTY, Passenger Traffic Manager..... 47411... Norfolk 10, Va.
 (Sales and Service)
 E. F. WALDROP, Jr., Assistant to General Passenger Traffic Manager..... S. A. L. R. R. Bldg. Phone 47411... Norfolk 10, Va.
 A. C. REA, Assistant General Passenger Agent..... 47411... Norfolk 10, Va.
 A. E. BOWERS, Mail Traffic Manager..... 47411... Norfolk 10, Va.
 C. G. DOUGLASS, Gen. Supt. Dining Cars, 5th & T Sts., N.E., Hobart 2444, Washington 2, D. C.
 H. S. WHITED, Supt. Dining Cars, 5th & T Sts., N.E., Hobart 2444, Washington 2, D. C.
 C. V. FUNKE, Superintendent Dining Cars..... 45508... Jacksonville, Fla.
 E. M. TUCKER, Superintendent Dining Cars and News Stands..... 212... Hamlet, N. C.

RATES

W. A. MARSHALL, Freight Traffic Manager..... 47411... Norfolk 10, Va.
 L. P. KING, Assistant Freight Traffic Manager..... 47411... Norfolk 10, Va.
 W. W. WOLFORD, Assistant Freight Traffic Manager..... 47411... Norfolk 10, Va.
 F. L. SENTER, Assistant to Freight Traffic Manager..... 47411... Norfolk 10, Va.
 C. B. PHELPS, General Freight Agent..... 47411... Norfolk 10, Va.
 J. C. WARREN, General Freight Agent (Divisions)..... 47411... Norfolk 10, Va.
 W. B. CULPEPER, Assistant General Freight Agent..... 47411... Norfolk 10, Va.
 H. P. TOXEY, Assistant General Freight Agent..... 47411... Norfolk 10, Va.
 J. A. KANE, Assistant General Freight Agent..... 47411... Norfolk 10, Va.
 J. A. WILSON, Assistant General Freight Agent..... 47411... Norfolk 10, Va.
 R. F. WOODY, Assistant General Freight Agent..... 47411... Norfolk 10, Va.

AGRICULTURAL

J. N. McBRIDE, General Agricultural Agent..... 8121... Savannah, Ga.
 F. P. ABBOTT, Assistant General Agricultural Agent..... 8121... Savannah, Ga.
 H. H. BRANNEN, Assistant to General Agricultural Agent..... 8121... Savannah, Ga.

TRAFFIC DEPARTMENT REPRESENTATIVES

Telephone	Telephone
ALBANY, GA.—P. O. Box 835	DURHAM, N. C.—S. A. L. Freight Station
F. E. HARRISON, III, Commercial Agent..... 2018-2019	Foot Market Street
ATHENS, GA.—(City Ticket Office)	MISS ELDORIE LOWRY, City Passenger Agent..... 9-2366
414-415 Sou. Mutual Ins. Bldg.,	FORT LAUDERDALE, FLA.—(City Ticket Office)
Information and Reservations..... 350	533 South Andrews Avenue
W. H. HILL, Commercial Agent..... 350	Information and Reservations..... 4751-52
ATLANTA 3, GA.—Information and Reservations,	F. P. MEDFORD, Asst. Gen. Frt. & Pass. Agent..... 2-3519
Walnut 5018	F. H. WILLIS, District Passenger Agent..... 4751-52
City Ticket Office—62 Luckie St.	FORT MYERS, FLA.—8 Travers Arcade
22 Marietta Street, Room 1202	A. P. COURVOISIE District Freight Agent..... 2-7481
H. E. PLEASANTS, Gen. Pass. Agt..... Walnut 2179	1st Street and Riverside
FRED A. STONE, Traveling Passenger Agent..... Walnut 2179	A. B. CHIPLEY, Depot Ticket Agent..... 4-1551
J. T. BUSBEE, JR., Traveling Passenger Agent Walnut 2179	FORT PIERCE, FLA.—Arcade Bldg.
B. J. KING, Asst. Frt. Traffic Mgr..... Walnut 6534	E. T. DAVIS, General Agent..... 22
L. W. FINCHER, Div. Freight Agt..... Walnut 7046-47	GAINESVILLE, FLA.—1420 University Ave.
AUGUSTA, GA.—523 So. Finance Bldg.	WILLIAM P. STONE, Jr., Ticket Agent..... 3331
B. D. JOINER, General Agent..... 24668	F. E. WILSON, District Freight Agent..... 3071
BALTIMORE 2, MD.—5-7 So. Calvert St.	GREENVILLE, S. C.—34 South Academy St.
Mercantile Trust Bldg.	H. S. WILLIAMS, District Freight Agent..... 2-3422
F. R. WIGGINS, Jr., District Passenger Agent Lexington 4135	HAMILTON, N. C.—Seaboard Passenger Station
J. F. WILLIAMS, General Agent..... Lexington 3920	J. CLAUDE EPTING, Agricultural Agent..... 212
BELLE GLADE, FLA.—P. O. Box 415	J. C. BENNETT, Agricultural Agent..... 212
H. O. CARLTON, General Agent..... 2530	HARTSVILLE, S. C.—1403 Fourth Street
BIRMINGHAM 3, ALA.—(City Ticket Office)	L. E. BROWN, Commercial Agent..... 1100-1101
105 N. 20th St.,	HAVANA, CUBA—Centro Gallego Bldg.
Information and Reservations..... 4-7416	DUSSAQ CO., LTD., S. A. Pass. Repr. & Tkt. Agts. A-6540
MARVIN A. CHANDLEE, Asst. Gen. Pass. Agent..... 4-7416	HOPEWELL, VA.
200 Seaboard Bldg.	J. S. HIGGINS, Agent..... 2233
W. A. REESE, Asst. Frt. Traf. Mgr..... 4-7426	INDIAN TOWN, FLA.—Atlantic Hotel
G. S. WILLIAMS, Division Freight Agent..... 4-7426	H. M. SAUNDERS, Agricultural Agent..... 2041
BOSTON 16, MASS.—2 Little Bldg.	JACKSONVILLE 2, FLA.—(City Ticket Office),
80 Boylston St.	218 West Forsyth Street
M. P. CLEAVES, New England Pass. Agt. Liberty 2-2634	Information and Reservations..... 3-1791
H. L. KNOX, New England Frt. Agt. Liberty 2-4700	J. R. BRADLEY, JR., General Passenger Agent..... 5-7311
BRUNSWICK, GA.—Oglethorpe Hotel Bldg.	JOHN F. THOMAS, JR., Asst. Gen. Passenger Agent 5-7311
J. H. MURPHY, Pass. and Ticket Agent..... 365	54 S. Hogan Street, Zone 1
BUFFALO 3, N. Y.—205 Lackawanna Terminal	E. H. BROWN, Asst. Frt. Traffic Manager..... 5-7311
DONALD E. POSTE, Traveling Passenger Agent Wash. 3736	J. L. HUTSON, JR., Division Freight Agent..... 5-7311
CHARLESTON 35, S. C.—22-26 Hasell St. Zone 35	E. M. NIX, Agricultural Agent..... 5-7311
R. M. BARNETT, Asst. Gen. Frt. Agt..... 9952, 2-2191	KANSAS CITY 6, MO.—A-1204 Fairfax Bldg.
E. C. SPEED, District Freight Agent	P. E. MCMURRY, General Agent..... Victor 4747
CHARLOTTE 2, N. C.—228 East Fifth St.	KEY WEST, FLA.—510 Southard Street
C. M. BONNER, Asst. Gen. Frt. & Pass. Agt..... 8167	SIMONE'S TOURS, Ticket Agents..... 298
O. D. DAVIS, District Freight Agent..... 8167	LAKE WALES, FLA.—(City Ticket Office),
B. HARRIS, Depot Ticket Agent..... 2-2840	Walesbill Hotel..... 2683
CHATTANOOGA 2, TENN.—1205 James Bldg.	H. HEPPELER, District Freight & Passenger Agent 2683
D. W. ANDERSON, General Agent..... 6-3758	LOUISVILLE 2, KY.—320 Heyburn Building
CHICAGO 3, ILL.—700 Bankers Building	A. A. DUITZ, General Agent..... Jackson 3413
W. G. BYROM, Northwestern Pass. Agt. State 2-2185	MACON, GA.—603 Bankers Insurance Building
GEO. T. F. SCHREIBER, Gen. Western Agt. State 2-2194	W. W. MILLER, General Agent..... 28562
A. A. WILLIAMS, District Freight Agent State 2-2194-5	MEMPHIS 3, TENN.—1022 Exchange Building
CINCINNATI 1, OHIO—2009-10 Carew Tower.	M. F. FLINN, Commercial Agent..... 8-7067
C. E. BOISSEAU, JR., General Agent..... Main 5061	MIAMI 2, FLA.—(City Ticket Office)—
CLEARWATER, FLA.—Seaboard Passenger Station	173 E. Flagler Street, P. O. Box 201
R. B. NORTON, Depot Ticket Agent..... 2391	Information and Reservations..... 82-6611
CLEVELAND, OHIO—2037 E. 14th Street	W. J. FICHT, General Passenger Agent..... 82-6611
S. T. ALLEN, District Passenger Agent, Superior 1-9239	R. L. PROGNER, District Passenger Agent..... 82-6611
COLUMBIA 7, S. C.—(City Ticket Office) Arcade Bldg.,	1925 N. W. 7th Avenue, Zone 36
Information and Reservations..... 2-8621-22	C. J. MUNDEE, Asst. Frt. Traffic Manager..... 3-5787-8
J. L. CARTER, Asst. Gen. Pass. Agent..... 2-8621-22	WALLACE SMITH, Division Freight Agent..... 3-5787-8
902 Gervais St., Zone 1	MONTGOMERY 2, ALA.—19 Columbus St.
O. G. DONNY, Asst. Gen. Frt. Agent..... 2-3655-56	M. F. FLINN, Commercial Agent..... 3-4479
COLUMBUS, GA.—200-203 The Professional Building	MONTREAL, QUE.—1240 Peel Street
T. F. SHARPLESS, Asst. Gen. Frt. Agt. 3-2717-8	LEO S. TOBIN, District Passenger Agent..... Plateau 9613
CORDELE, GA.—220 Seventh St., North	NASHVILLE 3, TENN.—530 Third National Bank Bldg.
T. C. McDowell, District Freight Agent..... 748	H. C. THOMSON, General Agent..... 6-7427
DETROIT 26, MICH.—1207 Lafayette Bldg.	N. S. SMITH, B. H. SMITH, Shiry Street
J. D. DAWSON, JR., General Agent..... Woodward 2-8404	BAHAMAS TOURIST CO., LTD..... 3181
	NEW ORLEANS 12, LA.—1020 Hibernia Bank Bldg.
	W. D. CHAMBERS, S. W. P. & Agt. Raymond 7888
	NEW YORK 20, N. Y.—(City Ticket Office)
	12 W. 51st Street, Rockefeller Center
	Information and Reservations..... Circle 5-7380
	H. T. DENNING, General Passenger Agent..... Circle 5-7380
	L. G. WEBER, Asst. Gen. Pass. Agt. Circle 5-7380
	T. W. EDWARDS, JR., Asst. Gen. Pass. Agt. Circle 5-7380
	1478 Woolworth Bldg., Zone 7
	J. D. DAWSON, Gen. E. Frt. Agent..... Worth 2-1180
	EARL PATTERSON, Eastern Frt. Agent..... Worth 2-1180
	NORFOLK 10, VA.—(City Ticket Office)
	Information and Reservations..... 2-5525
	V. T. BOATWRIGHT, JR., Division Passenger Agent 2-5525
	100 Plum Street
	L. B. WOODY, Asst. General Freight Agent..... 2-2400
	OCALA, FLA.—13 Van Buren St.
	J. R. LAFFEY, Commercial Agent..... 977
	OKLAHOMA CITY, OKLA.—1426 N. W. 26th Street
	J. D. PREWITT, General Agent..... 9-9525
	ORLANDO, FLA.—61 West Central Avenue
	J. F. RIVERS, Asst. General Freight Agent..... 7194
	J. P. ROBERTS, District Freight Agent..... 7194
	R. S. DOWDELL, Agricultural Agent..... 7194
	PAHOKEE, FLA.—P. O. Box 157
	E. P. HOLT, Commercial Agent..... 2791
	PALM BEACH, FLA.—901-9th Ave.
	L. A. JONES, District Freight Agent..... 33-101
	F. M. CONNOR, Agricultural Agent..... 33-101
	PETERSBURG, VA.—Seaboard Passenger Station
	H. W. RICHARDSON, Ticket Agent..... 5072
	PHILADELPHIA 2, PA.—1428 S. Penn Square
	J. M. STUART, Asst. Gen. Pass. Agt. Rittenhouse 6-7154
	601 Finance Bldg.
	I. J. HETHERINGTON, Gen. Agt. Rittenhouse 6-8038-9
	PITTSBURGH 19, PA.—953-954 Union Trust Bldg.
	C. B. BARTON, Asst. Gen. Pass. Agt. Atlantic 1-1945
	H. B. SCHUMMAN, General Agent..... Atlantic 1-1159
	PLANT CITY, FLA.—204 East Reynolds St.
	L. E. MORGAN, District Freight Agent..... 588
	W. M. HENRY, Agricultural Agent..... 588
	POMPANO BEACH, FLA.—17 State Farmer's Market
	Adm. Bldg.
	G. W. NICHOLS, Commercial Agent..... 361
	RALEIGH 1, N. C.—(City Ticket Office)
	922 Insurance Bldg.
	Information and Reservations..... 3-2714
	H. E. HITCHINGS, Asst. General Passenger Agent..... 3-2714
	504 I. O. O. F. Temple
	G. C. POOL, Asst. Freight Traffic Manager..... 7846
	W. H. HIGGINBOTHAM, District Freight Agent..... 3-1661
	RICHMOND 19, VA.—(City Ticket Office)
	706 E. Grace Street
	Information and Reservations..... 3-0291
	K. L. BORDEN, Asst. General Passenger Agent..... 3-0291
	3rd Floor, Main Street Station
	C. C. COSBY, Asst. General Freight Agent..... 7-0283
	E. N. QUAYLE, District Freight Agent..... 7-0283
	ROCHESTER 4, N. Y.—1221 Lincoln Alliance Bk. Bldg.
	S. VAN AUKEN, JR., General Agent..... Hamilton 1369
	ST. LOUIS 10, MO.—1921-22 Railway Exchange Bldg.
	H. P. SMITH, General Agent..... Main 1894
	ST. PETERSBURG 1, FLA.—(City Ticket Office)
	4th St. & Central Ave.
	Information and Reservations..... 7-5168-9
	E. R. MATTHEWS, Asst. Gen. Pass. Agent..... 7-5168-9
	I. E. MORGAN, District Freight Agent..... 7-4776
	SARASOTA, FLA.—Main & Lemon Streets
	JAMES C. DYKES, District Passenger Agent..... 2775

RAILROAD FARES — FROM NORTH TO SOUTH

Subject to Change Without Notice — 15% Federal Tax Not Included
Lower berth rates shown in fares from Southern points on pages 45-46. Table of Pullman rates on page 44.

FROM	BOSTON, MASS. (Via Hell Gate Bridge)				CLEVELAND, OHIO (Via Washington, D. C.)				NEW YORK, N. Y.			
	ONE-WAY		ROUND-TRIP 6 Months Limit		ONE-WAY		ROUND-TRIP 6 Months Limit		ONE-WAY		ROUND-TRIP 6 Months Limit	
	*In Pullmans	In Coaches	*In Pullmans	In Coaches	*In Pullmans	In Coaches	*In Pullmans	In Coaches	*In Pullmans	In Coaches	*In Pullmans	In Coaches
TO												
ATHENS, GA.	\$41.55	\$30.68	\$ 79.05	\$ 58.51	\$36.66	\$26.88	\$30.30	\$22.03	\$ 56.55	\$ 41.21
ATLANTA, GA.	43.65	32.18	82.85	61.21	36.66	26.88	32.40	23.53	60.35	43.91
AVON PARK, FLA.	56.83	40.82	106.60	76.71	48.92	34.76	\$ 89.90	\$ 62.55	45.58	32.16	84.10	59.41
BIRMINGHAM, ALA.	46.56	33.99	87.66	64.09	37.48	27.15	69.50	50.41
BREWENTON, FLA.	57.35	41.19	107.50	78.01	49.39	35.01	89.65	62.40	46.10	32.54	85.00	60.11
CLEARWATER, FLA.	57.11	41.02	107.10	77.16	49.00	34.86	87.40	60.70	45.75	32.32	84.35	59.71
COLUMBIA, S. C.	37.98	28.15	72.65	53.96	32.34	23.61	60.05	42.25	26.73	19.50	50.15	36.66
FORT LAUDERDALE, FLA.	60.91	43.73	113.90	81.96	52.95	37.80	97.20	67.80	49.66	35.08	91.40	64.66
HOLLYWOOD, FLA.	61.15	43.89	114.35	82.26	53.19	37.96	97.65	68.05	49.90	35.24	91.85	64.96
JACKSONVILLE, FLA.	48.95	35.19	92.40	66.61	40.99	29.26	75.70	52.40	37.70	26.54	69.90	49.31
MIAMI, FLA.	61.78	44.36	115.50	83.11	53.82	38.43	98.80	68.90	50.53	35.71	93.00	65.81
MONROE, N. C.	34.55	25.68	66.45	49.51	31.64	23.11	60.45	40.15	23.30	17.03	43.95	32.21
OCALA, FLA.	52.51	37.74	98.80	71.21	44.55	31.81	82.10	57.00	41.26	29.09	76.30	53.91
RALEIGH, N. C.	30.93	23.10	59.95	44.86	28.92	21.38	53.95	35.50	19.68	14.45	37.45	27.56
ST. PETERSBURG, FLA.	57.76	41.49	108.25	77.96	49.70	35.31	91.40	62.70	46.51	32.84	85.75	60.66
SARASOTA, FLA.	57.70	41.44	108.15	77.86	49.74	35.48	90.30	62.85	46.45	32.79	85.65	60.56
SAVANNAH, GA.	42.94	31.69	81.60	60.31	37.30	27.16	68.35	46.50	31.69	23.04	59.10	43.01
SEBRING, FLA.	57.06	40.98	107.00	77.01	49.73	35.35	89.95	62.60	45.81	32.33	84.50	59.71
TALLAHASSEE, FLA.	49.42	36.14	92.81	68.04	46.77	33.38	82.45	57.25	39.99	28.95	74.00	53.66
TAMPA, FLA.	56.36	40.48	105.75	76.11	48.40	34.30	89.05	60.85	45.11	31.83	83.25	58.81
THALMANN, GA.	46.10	33.38	87.25	63.36	40.45	29.85	74.00	49.55	34.84	24.73	64.75	46.06
W. LAKE WALES, FLA.	56.06	40.27	105.20	75.76	48.10	34.18	88.10	61.25	44.81	31.63	82.70	58.46
W. PALM BEACH, FLA.	59.45	42.68	111.30	80.11	51.49	36.76	94.60	65.90	48.20	34.04	88.80	62.81
WINTER HAVEN, FLA.	55.71	40.04	104.55	75.31	47.75	33.93	87.45	60.10	44.46	31.38	82.05	58.01

FROM	PHILADELPHIA, PA.				PITTSBURGH, PA.				WASHINGTON, D. C.			
	ONE-WAY		ROUND-TRIP 6 Months Limit		ONE-WAY		ROUND-TRIP 6 Months Limit		ONE-WAY		ROUND-TRIP 6 Months Limit	
	*In Pullmans	In Coaches	*In Pullmans	In Coaches	*In Pullmans	In Coaches	*In Pullmans	In Coaches	*In Pullmans	In Coaches	*In Pullmans	In Coaches
TO												
ATHENS, GA.	\$26.26	\$19.00	\$ 48.47	\$ 35.15	\$33.53	\$24.50	\$ 62.35	\$ 43.25	\$20.25	\$14.45	\$36.45	\$26.05
ATLANTA, GA.	28.36	20.50	52.27	37.85	33.72	24.70	62.65	43.50	22.35	15.95	40.25	28.75
AVON PARK, FLA.	41.54	29.13	76.02	53.35	48.92	34.68	89.90	61.45	35.53	24.58	64.00	44.25
BIRMINGHAM, ALA.	33.44	24.12	61.42	44.35	39.55	28.87	73.15	51.05	27.43	19.57	49.40	35.25
BREWENTON, FLA.	42.06	29.51	76.92	54.05	49.39	35.01	90.80	62.15	36.05	24.96	64.90	44.95
CLEARWATER, FLA.	41.71	29.29	76.27	53.65	49.00	34.86	90.15	61.75	35.82	24.81	64.50	44.70
COLUMBIA, S. C.	22.69	16.47	42.07	30.60	30.02	21.97	55.95	38.70	16.68	11.92	30.05	21.50
FORT LAUDERDALE, FLA.	45.62	32.05	83.32	58.60	52.95	37.55	97.20	66.70	39.61	27.50	71.30	49.50
HOLLYWOOD, FLA.	45.86	32.21	83.77	58.90	53.19	37.71	97.65	67.00	39.85	27.66	71.75	49.80
JACKSONVILLE, FLA.	33.66	23.51	61.82	43.25	40.99	29.01	75.70	51.35	27.65	18.96	49.80	34.15
MIAMI, FLA.	46.43	32.68	84.92	59.75	53.82	38.18	98.80	67.85	40.48	28.13	72.90	50.65
MONROE, N. C.	19.26	14.00	35.87	26.15	26.59	19.50	49.75	34.25	13.25	9.45	23.85	17.05
OCALA, FLA.	37.22	26.06	68.22	47.85	44.55	31.56	82.10	55.95	31.21	21.51	56.20	38.75
RALEIGH, N. C.	15.64	11.42	29.37	21.50	22.97	16.92	43.25	29.60	9.63	6.87	17.35	12.40
ST. PETERSBURG, FLA.	42.47	29.81	77.67	54.60	49.70	35.31	91.40	62.70	36.46	25.26	65.65	45.50
SARASOTA, FLA.	42.41	29.76	77.57	54.50	49.74	35.48	91.45	62.60	36.40	25.21	65.55	45.40
SAVANNAH, GA.	27.65	20.01	51.02	36.95	34.98	25.51	64.90	45.05	21.64	15.46	39.00	27.85
SEBRING, FLA.	41.77	29.30	76.42	53.65	49.15	34.85	90.30	61.75	35.76	24.75	64.40	44.55
TALLAHASSEE, FLA.	35.95	25.92	65.92	47.60	41.13	30.00	76.00	53.05	29.94	21.37	53.90	38.50
TAMPA, FLA.	41.07	28.80	75.17	52.75	48.40	34.30	89.05	60.85	35.06	24.25	63.15	43.65
THALMANN, GA.	30.80	21.70	56.67	40.00	38.13	27.20	70.55	48.10	24.79	17.15	44.65	30.90
W. LAKE WALES, FLA.	40.77	28.60	74.62	52.40	48.10	34.10	88.50	60.50	34.76	24.05	62.60	43.30
W. PALM BEACH, FLA.	44.16	31.01	80.72	56.75	51.49	36.51	94.60	64.85	38.15	26.46	68.70	47.65
WINTER HAVEN, FLA.	40.42	28.35	73.97	51.95	47.75	33.85	87.85	60.05	34.41	23.80	61.95	42.85

*-Charge for space occupied additional.

TRAFFIC DEPARTMENT REPRESENTATIVES — (Cont.)

SAVANNAH, GA.—(City Ticket Office)

7 E. Congress Street
Information and Reservations 8121, 3-7733
HUGH N. COLEBROOK, Division Pass. Agent, 8121, 3-7733
Union Station Building—435 West Broad St.
W. P. HICKEY, Asst. Freight Traffic Manager, 3-2431
E. H. SMART, Division Freight Agent, 3-2431
C. E. LLOYD, Agricultural Agent, 8121
R. R. BOYKIN, Asst. Agricultural Agent, 8121

TALLAHASSEE 1, FLA.—(City Ticket Office)

Centennial Building
Information and Reservations 17
C. E. WATTS, City Passenger and Ticket Agent, 17
W. F. CANOVA, District Freight Agent, 2-4993

TAMPA 2, FLA.—(City Ticket Office)

Hillsboro Hotel
Information and Reservations 2-8327
R. E. BLUMENSTIEL, Gen. Passenger Agent, 2-8001
P. W. HARRIS, District Passenger Agent, 2-8327
1005-10 Tampa Theater Bldg.
E. D. MAYS, Asst. Frt. Traffic Manager, 2-3941
A. M. BAKER, Asst. General Freight Agent, 2-3941
M. E. McRAE, Division Freight Agent, 2-3941
WASHINGTON 6, D. C.—(City Ticket Office)
1625 "K" St., N. W.
Information and Reservations National 0636
EDWARD FLACK, Gen. Pass. Agent, National 0636
E. H. GAUER, District Passenger Agent, National 0636
G. C. TATE, General Agent, Republic 8287
5th & T Streets, N. E.
C. G. DOUGLASS, Gen. Supt. Dining Cars, Hobart 2444

WEST PALM BEACH, FLA.—(City Ticket Office)

106 N. Narcissus Ave.
Information and Reservations 4174
JOHN CALLAHAN, Division Passenger Agent, 4174
West 1st Street
G. S. WOODWARD, District Freight Agent, 8823
R. A. CARLTON, Agricultural Agent, 8823
WILMINGTON, N. C.—Room 1,
Carolina Building & Loan Assn. Building
J. W. ROBERTS, Division Frt. and Pass. Agent, 21843-4
WINTER GARDEN, FLA.—T. & G. Freight Station
E. G. STEPHENS, Commercial Agent, 75
WINTER HAVEN, FLA.—(City Ticket Office)
Central Arcade
Information and Reservations 2-6891
O. O. WALTERS, District Freight & Passenger Agent, 2-6891

FLORIDA

YEAR 'ROUND

VACATIONLAND

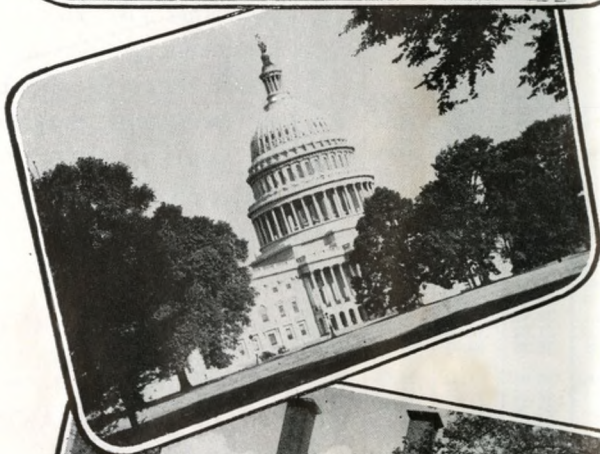
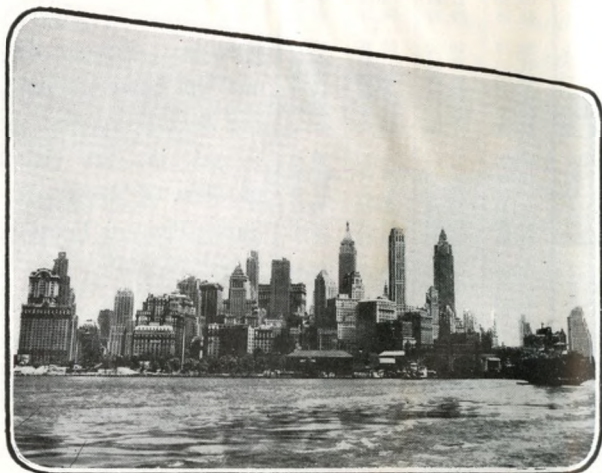
Any time is playtime in Florida . . . Resorts throughout the State — inland, on the Atlantic or on the Gulf — welcome the visitor regardless of the season . . . Sunlit daytime hours are always suitable for beach sports, fishing, boating and other outdoor activities that make a vacation complete . . . All of the attractions and luxurious accommodations that give Florida its paramount position among winter resorts are available to vacationists throughout the year . . . VISIT FLORIDA NOW.

SEABOARD SERVES
BOTH
FLORIDA COASTS

Go North.....

FOR BUSINESS OR PLEASURE

... or why not both? Every day more people realize the distinct advantages of using Seaboard Streamliners between the industrial and recreational centers of the South and East. It's a pleasure indeed to arrive at your destination completely relaxed and refreshed, ready for busy days ahead. Yes, business people appreciate Seaboard's sincere effort to provide comfortable, dependable transportation. And so do those who are planning vacations. For an enjoyable family sightseeing trip to Colonial Virginia or Washington . . . a week or two in New England . . . a shopping or theatre holiday in New York . . . plan now to GO SEABOARD!



Go South.....

THE YEAR 'ROUND VACATIONLAND

Come along! Relax or frolic on sun-drenched Atlantic or Gulf beaches, delightfully cooled by ocean breezes . . . fish, sail or swim in iridescent waters . . . golf or ride in picturesque surroundings. Many natural wonders, and beautiful gardens beckon throughout the land of pines and palms. Yes, Summer's fun everywhere — but you'll never forget your happy holiday in the year 'round vacationland, the South! Economical too, with reduced round-trip rail fares and hotel rates! Plan now to GO SEABOARD!



**GO...
SEABOARD**

SEABOARD SEABOARD

AIR LINE AIR LINE
RAILROAD RAILROAD

TIME
TABLES



Route of the
STREAMLINERS

TIME
TABLES



Route of the
STREAMLINERS



EFFECTIVE JUNE 24, 1951

EFFECTIVE JUNE 24, 1951