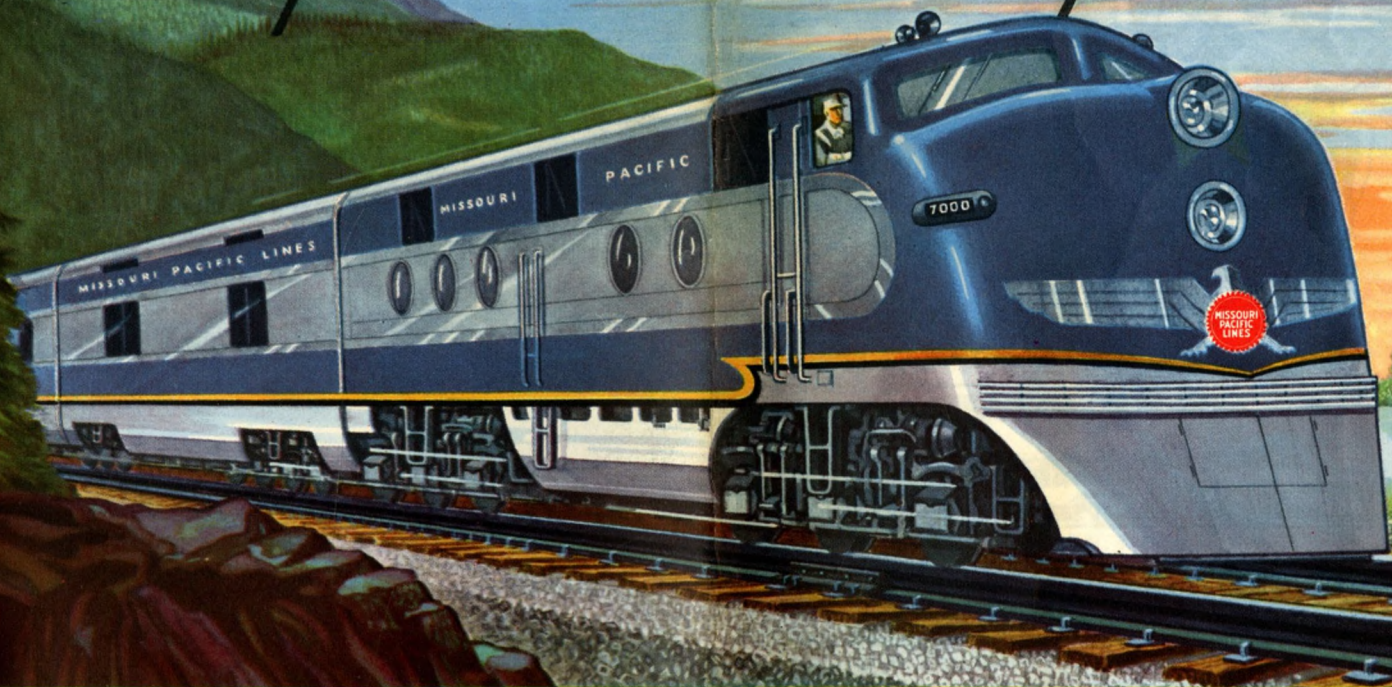


**MISSOURI  
PACIFIC  
LINES**

**MISSOURI  
PACIFIC  
LINES**

ROUTE OF THE  
*Eagles*

ROUTE OF THE  
*Eagles*



June 1, 1958

June 1, 1958

**USE THE ST. LOUIS GATEWAY**

**USE THE ST. LOUIS GATEWAY**

another Eagle Streamliner Service!

**New!**

# MO-PAC'S travel tray

piping hot meals...  
 freshly prepared in the diner,  
 served at your seat  
 on Eagle coaches!



## SAMPLE BREAKFAST MENU

**75¢**

MINCED HAM, SCRAMBLED EGGS  
FRIED POTATOES  
BREAKFAST ROLLS or MUFFIN, MARMALADE  
COFFEE

## SAMPLE LUNCHEON OR DINNER MENU

**\$1.00**

BRAISED SIRLOIN OF BEEF, MUSHROOM SAUCE  
BUTTERED STRING BEANS • BROWNED POTATOES  
ROLLS or MUFFIN  
RICE CUSTARD PUDDING, FRUIT SAUCE  
COFFEE or MILK



## Other **EAGLE** Features

- Low Fares!
- Family Fare Plan Every Day!
- Air-Conditioned Comfort!
- Soft, Reclining Seats!
- Auto-Rental Arrangements!
- Dome Coaches!



R. J. McDERMOTT, General Passenger Traffic Mgr., 1601 Missouri Pacific Bldg., St. Louis 3, Mo

# Understanding a Time Table Is Not So Difficult . . .

In fact, you will find it simple, we believe, if you will read and follow the suggestions offered here. You can find in this folder the answers to most of the questions that are apt to arise concerning a trip on the Missouri Pacific Lines.

## 1 Index to Stations

First locate the place you are going to in the alphabetical index of stations on Pages 34-36. Then turn to the table bearing the number shown in the index. Here you will find the schedules of trains arriving at and departing from your destination.

Table No.	Table No.
Abdul, Neb. . . . . 11.14	Baskin, La. . . . . 11.14
Adley, Tex. . . . . 11.14	Bastrop, La. . . . . 11.14
Admiral, Kan. . . . . 11.14	Batesville, Ark. . . . . 11.14
Alameda, Mo. . . . . 3.4	Batesville, Kan. . . . . 11.14
Alamo, Tex. . . . . 11.14	Weston Rouge, La. . . . . 11.14
Albino, Tex. . . . . 11.14	Battlefield, Mo. . . . . U.23
Albion, Ark. . . . . 13.16	Baxter, Ark. . . . . 11.14
Alexandria, La. . . . . 11.14	Bay City, Mo. . . . . 3.4
Algers, La. . . . . T.17	Bayneville, Tex. . . . . 11.14
Alton, Tex. . . . . 11.14	Baytown, Tex. . . . . 11.14
Altamont, Cal. . . . . 21	Bayview, Tex. . . . . 11.14
Altamont, Tex. . . . . 11.14	Beaumont, Tex. . . . . 11.14
Altamont, Kan. . . . . 11.14	Bedford, Kan. . . . . U.17.23
Altamont, Mo. . . . . 11.14	Bellevue, Ark. . . . . 11.14
Altamont, La. . . . . 11.14	Bellevue, La. . . . . 11.14

## 2 Read Down

Miles	TABLE 1	Daily
0	ST. LOUIS	8:58
3	lv Tower Grove	9:10
10	lv Maplewood	9:47
13	lv Webster Groves	
18	lv Kirkwood	
22	lv Valley Park	
27	lv Eureka	
30	lv Allentown	
34	lv Gray Summit	
39	lv Washington	
51	lv New Haven	
64	lv Berger	
71	lv Hermann	
77	lv Casscoade	
85	lv Morrison	
89	lv Chamack	
97		

First read down the list of cities until you locate your starting point. Opposite you will find the departure times of trains that stop there. Continue reading down until you find the name of your destination where you can check the arrival times of trains stopping there.

## 3 A. M. and P. M.

Departure times from 12:01 A.M. to 11:59 A.M. are shown in light figures. Times from 12:01 P.M. to 11:59 P.M. are shown in heavy figures.

85	lv Independence	7:45
85	lv Pleasant Hill	8:37
40	lv Sevier	9:07
70	lv Cape Girardeau	9:44
34	lv Jefferson City	10:15
34	lv Washington	12:01
24	lv Kansas City	12:14
12	lv Webster Groves	12:30
12	lv Tower Grove	
12	Ar ST. LOUIS	

## Traffic Representatives

Addresses and telephone numbers of the traffic offices maintained by the Missouri Pacific Lines in principal cities of the United States, in Mexico, and Havana, Cuba, are listed on Pages 36-38. Call on any of these agencies any time you need information or assistance with your travel or shipping problems. You will be cordially welcomed and receive prompt attention.

## 4 Check References

### EXPLANATION OF REFERENCE MARKS

- f—Stops on signal.
- ★—Stops to receive or discharge revenue passengers.
- Stops to receive revenue passengers.
- Stops to discharge revenue passengers.
- ⌈—Stops for revenue passengers to or from

There is a reason for each of the symbols that appear opposite some schedule figures. For illustration, "f" means stop to let passengers get on or off the train. Each symbol is explained in a footnote on the page on which it is shown. If you encounter a symbol in the table you are consulting, be sure to check the footnote. The information may affect your travel plans.

## 5 Rail and Pullman Fares

A list of rail, sleeping and parlor car between principal cities is shown on Pages 31-33. Figures shown do not include 10 per cent Federal Tax that applies on all fares or 2 per cent Sales Tax applicable to intrastate fares between points in Missouri.

	In Coaches		Pullman
	One Way	6 Months R. T.	One Way
DALLAS, TEX. TO			
Chicago	Ill. \$26.30	\$47.35	\$36.82
Hot Springs	Ark. 10.20	18.20	14.33
Little Rock	Ark. 10.01	18.00	14.22
Memphis	Tenn. 13.84	24.95	19.34
St. Louis	Mo. 18.40	33.15	25.75
FORT WORTH, TEX. TO			
Chicago	Ill. 26.30	47.35	36.82
Hot Springs	Ark. 11.17	20.15	15.59
Little Rock	Ark. 10.93	19.70	15.27
Memphis	Tenn. 14.75	26.50	20.59
St. Louis	Mo. 18.74	33.75	26.23
HOUSTON, TEX. TO			
Brownsville	Tex. 11.15	20.10	15.78
Chicago	Ill. 32.97	59.21	45.92

## Other Helpful Information

Condensed schedules with descriptions of travel accommodations available on Missouri Pacific trains are shown on Pages 4-9. Departure times of connecting trains of other railroads from St. Louis, Memphis, Kansas City, New Orleans and Omaha are listed on Pages 26-27. Baggage and ticket regulations and other information of interest to travelers are presented on Page 33. Types of Pullman sleeping car accommodations available on Missouri Pacific trains are described and illustrated on Pages 28-30.

ST. LOUIS — KANSAS CITY

TABLE <b>A</b>	5 Daily	15 Daily	11 Daily	9 Daily
Lv ST. LOUIS.....	8.50 Su	1.50 Su	4.00 Su	11.17 Su
Ar JEFFERSON CITY.....	11.00 Su	4.10 Su	6.00 Su	1.55 Mo
Ar SEDALIA.....	12.15 Su	5.43 Su	7.10 Su	4.00 Mo
Ar KANSAS CITY.....	2.20 Su	8.15 Su	9.00 Su	6.30 Mo

ST. LOUIS — KANSAS CITY — DENVER — SAN FRANCISCO

TABLE <b>B</b>	11 Daily Example
Lv ST. LOUIS.....	4.00 Su
Ar KANSAS CITY.....	9.00 Su
Lv KANSAS CITY.....	9.10 Su
Lv GENESEO.....	1.40Mo
Ar HOISINGTON (C.T.).....	2.19Mo
Ar PUEBLO (M.T.).....	7.10Mo
<i>(Via D. &amp; R. G. W.)</i>	
Lv PUEBLO.....	7.20Mo
Ar COLORADO SPGS. (A.T. & S.F. St.).....	8.11Mo
Ar DENVER.....	9.50Mo
Lv PUEBLO.....	12.15Mo
Ar ROYAL GORGE.....	1.36Mo
Ar GLENWOOD SPRINGS.....	8.17Mo
Ar SALT LAKE CITY (M.T.).....	8.30 Tu
<i>(Via Western Pacific)</i>	
Lv SALT LAKE CITY (M.T.).....	10.15 Tu
Ar SAN FRANCISCO (P.T.).....	4.55 We
CONNECTING TRAIN	
Lv WICHITA.....	10.00 Su
Ar GENESEO.....	12.23 Mo

ST. LOUIS — KANSAS CITY — LOS ANGELES

TABLE <b>C</b>	5 Daily	11 Daily	9 Daily
Lv ST. LOUIS.....	8.50 Su	4.00 Su	11.17 Su
Ar KANSAS CITY.....	2.20 Su	9.00 Su	6.30 Mo
<i>(Via Rock Island)</i>			
Lv KANSAS CITY.....		10.20 Su	8.35 Mo
Ar EL PASO.....		2.45 Mo	6.30 Tu
Ar TUCSON.....		8.50 Mo	3.15 Tu
Ar PHOENIX.....		11.25 Mo	7.10 Tu
Ar LOS ANGELES.....		7.30 Tu	5.30 We
<i>(Via Santa Fe)</i>			
Lv KANSAS CITY.....	4.55 Su	9.30 Su	
Ar LOS ANGELES.....	11.15 Mo	12.10 Tu	
<i>(Via Santa Fe)</i>			
Lv KANSAS CITY.....		10.50 Su	
Ar SAN FRANCISCO.....		2.45 Tu	

ST. LOUIS — KANSAS CITY — OMAHA — LINCOLN

TABLE <b>D</b>	5-105-Bus	11-119-Bus
Lv ST. LOUIS.....	8.50 Su	4.00 Su
Lv KANSAS CITY.....	2.40 Su	12.40 Mo
Ar OMAHA.....	6.55 Su	7.20 Mo
Ar LINCOLN.....	▲ 7.15 Su	▲ 10.50 Mo

No. 3—June 1, 1958—All Editions

Printed in U. S. A.

EQUIPMENT: WESTBOUND

No. 11—Colorado Eagle Streamlined Train

Sleepers:

St. Louis to Denver, 10 Roomettes, 6 Double Bedrooms. [111].  
 St. Louis to Denver, 10 Roomettes, 6 Double Bedrooms. [112].  
 St. Louis to Denver.  
 "Thrift-T-Sleeper" 8 Sec. 1 D. Room 3 D. Br. [TS-1] "Sleep-N-Save Service."  
 Wichita to Denver, 6 Sec. 6 Roomettes, 4 Double Bedrooms. [114].

Dining-Lounge—St. Louis to Denver.

Coaches..... (Reclining Seats)

St. Louis to Denver.  
 St. Louis to Denver (Planetarium).

Coach—Diner—Lounge

St. Louis to Denver.

No. 5-105

Missouri River Eagle

Streamlined Train

Coaches—Reclining Seats

St. Louis to Omaha.

Dining-Lounge Car

St. Louis to Omaha.

Mo. Pac. Parlor Car... [D.R.] St. Louis to Omaha. [51]

No. 15

Mo. Pac. Parlor Car—D. R.:

St. Louis to Kansas City. [151].

Dining Lounge:

St. Louis to Kansas City.

Coaches: (Reclining Seats):

St. Louis to Kansas City.

No. 9—The Missourian

Sleepers:

(Ready for occupancy 9:30 p.m. Held for occupancy at Kansas City until 7:30 a.m.)  
 St. Louis to Kansas City. (8 Sec. 5 Double Bedrooms.) [91]

Coaches (Reclining Seats):

St. Louis to Kansas City.

No. 119

Coaches (Reclining Seats):

Kansas City to Omaha.

No. 221

Coach..... Pleasant Hill—Newport

**rail travel card**  
 Series 2  
 No. A 14147-123  
 SUBSCRIBER XYZ Corp.  
 CARD HOLDER John Doe  
 SIGNATURE *John Doe*  
 at ticket offices

*Your Personal Introduction Wherever You Travel*

You're recognized as an old friend when you use the "charge-it" service of your Rail Travel Card. Costs you nothing... saves time and trouble.

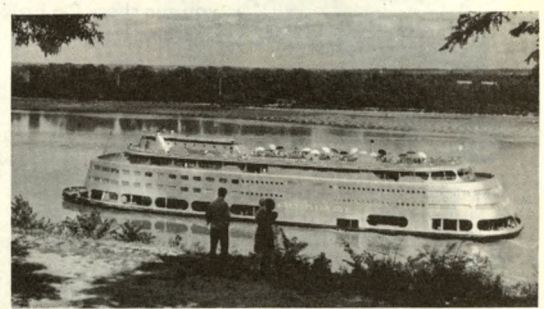
**NO DEPOSIT REQUIRED**

For complete information and application blank ask your Missouri Pacific ticket agent or write.

**RAIL TRAVEL CREDIT AGENCY**  
 436 Union Station • Chicago 6, Ill.

for car rental (Avis, Hertz, National)

at many leading hotels



St. Louis' Visitors Enjoy Mississippi River Cruises

A modern, streamlined version of the glamorous Mississippi River steamboats, the S.S. "Admiral" is a distinctive St. Louis attraction—like the city's renowned Zoo, Shaws Botanical Gardens, Municipal Opera or Lindbergh Trophy Collection. It provides summer visitors with pleasant relaxation and entertainment plus sightseeing along the banks of the historic river.

Afternoon and evening excursions start at the St. Louis levee during the summer months.

# 4 Trains

Each Way Every Day

Between

# ST. LOUIS and KANSAS CITY

Only Missouri Pacific offers a choice of four schedules eastbound and westbound daily between Missouri's two great travel gateways. You have a choice too of modern accommodations—including reclining seat coaches, Pullman berths or private rooms, luxury club cars and lounges, superior dining car meals. On the streamlined Colorado Eagle planetarium-dome coaches provide an extra sightseeing thrill for daytime travelers.



**ROUTE OF THE EAGLES**

Light figures indicate A. M.

## KANSAS CITY — ST. LOUIS

TABLE <b>E</b>	10 Daily		12 Daily		6 Daily		14 Daily	
	Lv	Ar	Lv	Ar	Lv	Ar	Lv	Ar
Lv KANSAS CITY.....	11.55	Su	7.15	Su	12.20	Su	4.00	Su
Lv SEDALIA.....	2.30	Mo	8.52	Su	2.10	Su	5.43	Su
Lv JEFFERSON CITY.....	4.05	Mo	10.00	Su	3.20	Su	7.20	Su
Ar ST. LOUIS.....	7.13	Mo	12.15	Su	6.40	Su	10.15	Su

### EQUIPMENT: EASTBOUND

#### No. 12—Colorado Eagle Streamlined Train

##### Sleepers:

Denver to St. Louis, 10 Roomettes, 6 Double Bedrooms [31].

Denver to St. Louis, 10 Roomettes, 6 Double Bedrooms. [32].

Denver to St. Louis.

"Thrift-T-Sleeper" 8 Sec. 1 D. Room 3 D. Br. [TS-3] "Sleep-N-Save Service."

Denver to Wichita, 6 Sec. 6 Roomettes, 4 Double Bedrooms. [34].

**Dining-Lounge.** Denver to St. Louis.

**Coaches**.... (Reclining Seats)

Denver to St. Louis.

Denver to St. Louis (Planetarium).

**Coach-Diner-Lounge**

Denver to St. Louis.

#### No. 106-6

#### Missouri River Eagle

Streamlined Train

**Coaches (Reclining Seats):**

Omaha to St. Louis.

**Dining-Lounge Car**

Omaha to St. Louis.

**Mo. Pac. Parlor Car**.... [D.R.] Omaha to St. Louis. [61].

#### No. 10

#### The Missourian

**Sleepers:**

(Ready for occupancy 10:00 P.M.)

Kansas City to St. Louis, 8 Section, 5 Double Bedrooms. [106].

**Coaches (Reclining Seats):**

Kansas City to St. Louis. (Ready for occupancy 11:00 P.M.)

#### No. 14

**Mo. Pac. Parlor Car**.... Kansas City to St. Louis. 1 Dr. [142].

**Coaches (Reclining Seats):**

Kansas City to St. Louis.

**Dining-Lng.** Kansas City to St. Louis.

#### No. 110

**Coaches (Reclining Seats):**

Omaha to Kansas City.

**Grill Coach.** Omaha to Kansas City.

#### No. 232

**Coach**..... Newport to Pleasant Hill.

▲Via Midwest Bus Lines — rail tickets honored — remains cannot be handled.

## SAN FRANCISCO — DENVER — KANSAS CITY — ST. LOUIS

TABLE <b>F</b>	12 Daily Example	
	Lv	Ar
<i>(Via Western Pacific)</i>		
Lv SAN FRANCISCO (P.T.).....	9.25	Su
Ar SALT LAKE CITY (M.T.).....	5.40	Mo
<i>(Via D&amp;RGW)</i>		
Lv SALT LAKE CITY (M.T.).....	5.30	Mo
Lv GLENWOOD SPRINGS.....	4.05	Tu
Lv ROYAL GORGE.....	10.20	Tu
Ar PUEBLO.....	11.45	Tu
Lv DENVER.....	4.15	Tu
Lv COLO. SPRGS.(D.& R.G.W.Sta.).....	5.53	Tu
Ar PUEBLO.....	6.45	Tu
Lv PUEBLO (M.T.).....	6.55	Tu
Lv HOISINGTON (C.T.).....	1.18	We
Ar GENESEO.....	1.57	We
Ar KANSAS CITY.....	6.55	We
Lv KANSAS CITY.....	7.15	We
Ar ST. LOUIS.....	12.15	We
CONNECTING TRAIN		
Lv GENESEO.....	4.00	We
Ar WICHITA.....	7.00	We

## LOS ANGELES — KANSAS CITY — ST. LOUIS

TABLE <b>G</b>	10 Daily		12 Daily	
	Lv	Ar	Lv	Ar
<i>(Via Rock Island)</i>				
Lv LOS ANGELES.....	10.00	Su	1.00	Su
Lv PHOENIX.....	10.55	Mo	10.15	Su
Lv TUCSON.....	2.05	Mo	1.10	Mo
Lv EL PASO.....	11.05	Mo	7.40	Mo
Ar KANSAS CITY.....	8.40	Tu	1.00	Tu
<i>(Via Santa Fe)</i>				
Lv LOS ANGELES.....	1.00	Mo	8.00	Su
Ar KANSAS CITY.....	11.05	Tu	5.35	Tu
<i>(Via Santa Fe)</i>				
Lv SAN FRANCISCO.....			11.00	Su
Ar KANSAS CITY.....			6.00	Tu
Lv KANSAS CITY.....	11.55	Tu	7.15	Tu
Ar ST. LOUIS.....	7.13	We	12.15	Tu

## LINCOLN — OMAHA — KANSAS CITY — ST. LOUIS

TABLE <b>H</b>	Bus 110-10		Bus 106-6	
	Lv	Ar	Lv	Ar
Lv LINCOLN.....	▲ 2.40	Su	▲ 7.05	Su
Lv OMAHA.....	4.00	Su	8.00	Su
Ar KANSAS CITY.....	9.20	Su	11.59	Su
Ar ST. LOUIS.....	7.13	Mo	5.40	Su

## ST. LOUIS — MEMPHIS AND ARKANSAS — TEXAS — ARIZONA — CALIFORNIA

	THE TEXAS EAGLE	The Southerner	THE TEXAS EAGLE	The Sunshine Special	The Ozarker	The Southerner	
	1 Daily Example	31 Daily Example	2 Daily Example	32 Daily Example	4 Daily Example	8 Daily Example	
St. Louis Gateway							
Lv ST. LOUIS	5 50 Su		11 59 Sat	10 00 Sat		8 25 Sa	
Ar LITTLE ROCK	12 30 Mo		9 45 Su	10 30 Su		6 10 Su	
Memphis Gateway	201-1	201-31	219-7	2 10 Su		8 40 Su	
Lv MEMPHIS	8 30 Su	8 30 Su	8 00 Su	10 00 Su		3 05 Su	
Ar LITTLE ROCK	11 45 Su	11 45 Su	11 05 Su	12 50 Mo		3 20 Su	
Lv LITTLE ROCK	12 45 Mo	12 55 Mo	11 25 Su	5 05 Mo	8 30 Su	6 30 Mo	
Ar Texarkana	3 25 Mo	4 30 Mo	2 30 Su	6 10 Mo	10 15 Su	7 35 Mo	
Lv Texarkana via T. & P.	3 40 Mo		3 00 Su	8 35 Mo	1 40 Mo	10 05 Mo	
Ar Longview	5 20 Mo		5 15 Su	8 35 Mo	1 40 Mo	10 05 Mo	
Lv Longview	5 20 Mo		5 15 Su	10 30 Mo	4 15 Mo	12 01 Mo	
Ar DALLAS	7 40 Mo		8 30 Su	10 40 Mo	7 45 Mo	4 30 Mo	
Ar Ft. WORTH	8 50 Mo		10 00 Su	1 10 Tu	11 05 Mo	7 50 Mo	
Ar EL PASO (M.T.)	10 45 Mo		12 50 Mo				
Lv EL PASO (S.P.)	11 55 Mo		3 00 Mo	3 40 Tu	3 40 Tu	3 45 Mo	
Ar TUCSON	5 55 Tu		8 50 Mo	7 00 Tu	7 00 Tu	7 00 Mo	
Ar PHOENIX	8 30 Tu		11 25 Mo	1 30 Tu	11 50 Mo	8 20 Mo	
Ar LOS ANGELES (P.T.)	4 15 Tu		7 30 Tu	8 10 Tu	7 50 Tu	3 35 Mo	
						11 00 Mo	
				Memphis Gateway	2-202	32-202	8-220
				Lv LITTLE ROCK			
				Ar MEMPHIS			
				Lv LITTLE ROCK			
				Ar ST. LOUIS			

## ST. LOUIS—MEMPHIS AND SAN ANTONIO—MEXICO CITY

	THE TEXAS EAGLE	THE TEXAN	The Southerner	THE TEXAS EAGLE	The Southerner
	21 Daily Example	25-21 Daily Example	7-37 Daily Example	22 Daily Example	38-8 Daily Example
St. Louis Gateway					
Lv ST. LOUIS	5 40 Su	2 00 Su	11 59 Sat	8 20 Sa	8 20 Su
Ar LITTLE ROCK	12 10 Mo	9 15 Su	9 45 Su	3 50 Su	3 50 Mo
Memphis Gateway	201-21		219-7	8 00 Su	8 00 Mo
Lv MEMPHIS	8 30 Su		8 00 Su	9 05 Su	9 05 Mo
Ar LITTLE ROCK	11 45 Su		11 05 Su		
Lv LITTLE ROCK	12 25 Mo	9 35 Su	11 25 Su	2 30 Su	2 30 Mo
Ar Texarkana	3 05 Mo	12 55 Mo	2 30 Su	3 59 Su	3 59 Mo
Lv Texarkana	3 30 Mo	1 10 Mo	3 35 Su	7 15 Su	7 15 Mo
Via T. & P.				7 40 Su	8 10 Mo
Ar Longview	5 10 Mo	3 10 Mo	5 45 Su	9 25 Su	10 35 Mo
Lv Longview	5 15 Mo	3 20 Mo	6 05 Su	9 30 Su	10 45 Mo
Via MoPac.					
Ar Palestine	7 00 Mo	5 25 Mo	8 45 Su	11 05 Su	12 30 Tu
Lv Palestine	7 20 Mo	7 20 Mo	9 20 Su	11 15 Su	12 45 Tu
Ar AUSTIN	10 53 Mo	10 53 Mo	3 27 Mo	1 45 Mo	3 25 Tu
Ar SAN ANTONIO	12 40 Mo	12 40 Mo	5 45 Mo		3 20 Mo
Ar LAREDO	4 40 Mo	4 40 Mo			
Via N. R. of M.					
Lv NUEVO LAREDO	6 00 Mo	6 00 Mo			
Ar MONTERREY	10 15 Mo	10 15 Mo			
Ar MEXICO CITY	8 00 Tu	8 00 Tu			
				Memphis Gateway	22-202
				Lv LITTLE ROCK	3 40 Mo
				Ar MEMPHIS	7 00 Mo
				Lv LITTLE ROCK	2 00 Mo
				Ar ST. LOUIS	8 25 Mo

## ST. LOUIS—MEMPHIS—HOUSTON

	THE TEXAS EAGLE	THE TEXAN	The Southerner	THE TEXAS EAGLE	The Southerner
	21-121 Daily Example	25-21-121 Daily Example	7-37-137 Daily Example	122-22 Daily Example	122-22-26-202 Daily Example
St. Louis Gateway					
Lv ST. LOUIS	5 40 Su	2 00 Su	11 59 Sat	4 15 Mo	4 15 Mo
Ar LITTLE ROCK	12 10 Mo	9 15 Su	9 45 Su	7 10 Mo	7 10 Mo
Memphis Gateway	201-21		219-7	7 40 Mo	8 10 Mo
Lv MEMPHIS	8 30 Su		8 00 Su	9 25 Mo	10 35 Mo
Ar LITTLE ROCK	11 45 Su		11 05 Su	9 30 Mo	10 45 Mo
Lv LITTLE ROCK	12 25 Mo	9 35 Su	11 25 Su	11 05 Mo	12 30 Tu
Ar Texarkana	3 05 Mo	12 55 Mo	2 30 Su	11 15 Mo	12 45 Tu
Lv Texarkana	3 30 Mo	1 10 Mo	3 35 Su		
Via T. & P.				1 45 Tu	3 25 Tu
Ar Longview	5 10 Mo	3 10 Mo	5 45 Su		
Lv Longview	5 15 Mo	3 20 Mo	6 05 Su		
Via MoPac.					
Ar Palestine	7 00 Mo	5 25 Mo	8 45 Su		
Lv Palestine	7 25 Mo	7 25 Mo	10 30 Su		
Ar HOUSTON	10 40 Mo	10 40 Mo	3 15 Mo		
				Memphis Gateway	22-202
				Lv LITTLE ROCK	3 40 Tu
				Ar MEMPHIS	7 00 Tu
				Lv LITTLE ROCK	2 00 Tu
				Ar ST. LOUIS	8 25 Tu

## CHICAGO—ST. LOUIS—HOT SPRINGS

		1-831	7-219
Lv CHICAGO (GM&O)			4 50 Sat
Lv ST. LOUIS		5 50 Su	11 59 Sat
Ar LITTLE ROCK		12 30 Mo	9 45 Su
Lv LITTLE ROCK		2 30 Mo	11 20 Su
Ar HOT SPRINGS		4 00 Mo	12 45 Su
		220-8	832-32
Lv HOT SPRINGS		2 00 Su	8 00 Su
Ar LITTLE ROCK		3 15 Su	9 25 Su
Lv LITTLE ROCK		3 35 Su	11 50 Su
Ar ST. LOUIS		11 00 Su	7 50 Mo
Ar CHICAGO (GM&O)		7 00 Mo	

## MEMPHIS — HOT SPRINGS

		219	201-831
Lv MEMPHIS		8 00 Su	8 30 Su
Ar LITTLE ROCK		11 05 Su	11 45 Su
Lv LITTLE ROCK		11 20 Su	2 30 Mo
Ar BENTON		11 44 Su	3 05 Mo
Ar HOT SPRINGS		12 45 Su	4 00 Mo
		220	832-202
Lv HOT SPRINGS		2 00 Su	8 00 Su
Lv BENTON		2 45 Su	8 50 Su
Ar LITTLE ROCK		3 15 Su	9 25 Su
Lv LITTLE ROCK		3 45 Su	3 40 Mo
Ar MEMPHIS		7 00 Su	7 00 Mo

## ST. LOUIS—SHREVEPORT

		1-31
Lv ST. LOUIS		5 50 Su
Lv LITTLE ROCK		12 55 Mo.
Lv HOPE (L&A)		4 30 Mo
Ar SHREVEPORT		7 30 Mo
		32
Lv SHREVEPORT (KCS)		5 20 Su
Lv TEXARKANA		7 45 Su
Ar LITTLE ROCK		11 05 Su
Ar ST. LOUIS		7 50 Mo

## ST. LOUIS—EL DORADO

		1-31-821
Lv ST. LOUIS		5 50 Su
Lv LITTLE ROCK		12 55 Mo
Ar GURDON		2 40 Mo
Ar EL DORADO		7 30 Mo
		822-32
Lv EL DORADO		6 30 Su
Lv GURDON		9 20 Su
Ar LITTLE ROCK		11 05 Su
Ar ST. LOUIS		7 50 Mo

# EQUIPMENT — SOUTHWEST

*All Regular Cars Air Conditioned*

## SOUTHBOUND

### *The Texas Eagle Train No. 1 (Streamlined Train)*

**Sleepers—**

Chicago to El Paso (14 Rmte. 4 DBR) [MP-20] (G. M. & O. Train 1 to St. Louis).

New York to Ft. Worth (Via P.R.R.) (10 Rmte. 6 DBR) [MP-2]  
Washington to Ft. Worth (Via B.&O.) (14 Rmte. 4 DBR) [MP-30].

Memphis to Ft. Worth (14 Rmte. 4 DBR) [18] (No. 201 to Little Rock).

St. Louis to El Dorado (10 Rmte. 5 DBR) [315] (No. 31-821 from Little Rock).

St. Louis to Shreveport (14 Rmte. 1 Dr. 2 DBR) [314] (No. 31 from Little Rock-L & A 3 from Hope).

St. Louis to Lake Charles (14 Rmte. 4 DBR) [312] (No. 131 from Little Rock).

Dallas to Los Angeles (Roomette-Bedroom) [15]

**Lounge Car—**

St. Louis to Ft. Worth (5 Bedroom) [17].

**Dining Car—**

St. Louis to Ft. Worth.

**Dining-Lounge—**

Ft. Worth to El Paso.

**Coaches—(Reclining Seats)**

St. Louis to El Paso.  
St. Louis to Ft. Worth (Grill).  
St. Louis to Ft. Worth (Planetarium).  
Memphis to Ft. Worth.  
(No. 201 to Little Rock)

### *The Texas Eagle Train No. 21 (Streamlined Train)*

**Sleepers—**

Chicago to Houston (10 Rmte. 6 DBR) [MP-23]. (G. M. & O. Train 1 to St. Louis.)

Memphis to Houston (14 Rmte. 4 DBR) [217] (No. 201 to Little Rock)

Washington to Houston (Via P.R.R.) (10 Rmte. 6 DBR) [MP-5]

New York to Houston (Via P.R.R.) (10 Rmte. 6 DBR) [MP-4].

New York to San Antonio (Via P.R.R.) (10 Rmte. 6 DBR) [MP-3]

St. Louis to San Antonio (14 Rmte. 4 DBR) [216]

St. Louis to San Antonio (14 Rmte. 4 DBR) [215].

**Dining Lounge Car—**

St. Louis to Houston.  
St. Louis to San Antonio.

**Coaches—(Reclining Seats)**

St. Louis to Houston.  
St. Louis to Houston-Corpus Christi.  
St. Louis to San Antonio (Planetarium).  
St. Louis to San Antonio (Grill).

**No Checked Baggage or Remains Will Be Handled On This Train.**

### *Aztec Eagle Train No. 21*

**Sleepers—**

San Antonio to Mexico City (8 Sec. 5 DBR) [253].

**Dining-Lounge Equipment**

San Antonio-Laredo-Mexico City.

**Coaches—(Reclining Seats)**  
San Antonio-Laredo-Mexico City (Reserved Seats);

### *Train No. 201*

**Sleepers—**

Memphis to Ft. Worth (14 Rmte. 4 DBR) [18]. (No. 1 from Little Rock).

Memphis to Houston (14 Rmte. 4 DBR) [217].  
(No. 21 from Little Rock).

**Coaches—(Reclining Seats)**

Memphis to Little Rock.  
Memphis to Ft. Worth.  
(No. 1 from Little Rock).

### *The Sunshine Special Train No. 31*

**Sleepers—**

St. Louis to El Dorado (10 Rmte. 5 DBR) [315] (No. 1 to Little Rock). (No. 821 from Gurdon).

St. Louis to Shreveport (14 Rmte. 1 DRoom, 2 DBR) [314] (No. 1 to Little Rock). (L&A 3 from Hope).

**Coaches—(Reclining Seats)**

Little Rock to Texarkana.

### *The Southerner No. 7*

**Sleepers—**

St. Louis to Hot Springs (14 Rmte. 1 D. Room 2 DBR) [75].  
(Open for occupancy 9:30 PM).

Chicago to Hot Springs (10 Rmte., 6 DBR) [35] (G. M. & O. 3 to St. Louis).

**Coaches—(Reclining Seats)**

St. Louis-Ft. Worth.  
Ft. Worth-El Paso.  
Texarkana to San Antonio.  
Palestine to Houston.

**Dining-Lounge—**

St. Louis to Texarkana.  
Marshall to El Paso.

### *No. 219*

**Coaches—(Reclining Seats)**

Memphis to Hot Springs.  
Memphis to Hot Springs (Grill).

### *The Texan No. 25*

**Coaches—(Reclining Seats)**

St. Louis to Little Rock.  
St. Louis to Palestine.

**Dining-Parlor [251]**

St. Louis to Little Rock.

## NORTHBOUND

### *The Texas Eagle Train No. 2 (Streamlined Train)*

**Sleepers—**

El Paso to Chicago (14 Rmte. 4 DBR) [GM-23]. (Train 22 Little Rock-St. Louis—G. M. & O. Train 2 to Chicago).

Ft. Worth to Washington (Via B&O) (14 Rmte. 4 DBR) [BO-32].  
Ft. Worth to New York (Via P.R.R.) (10 Rmte. 6 DBR) [PR-9].  
Ft. Worth to Memphis (14 Rmte. 4 DBR) [27] (No. 202 from Little Rock).

**Lounge Car—**  
Ft. Worth to St. Louis (5 Bedroom)[29].

**Dining Car—**  
Ft. Worth to St. Louis.

**Dining-Lounge—**  
El Paso to Ft. Worth.

**Coaches—(Reclining Seats)**

El Paso to St. Louis.  
Ft. Worth to St. Louis (Grill).  
Ft. Worth to St. Louis (Planetarium).  
Ft. Worth to Memphis.  
(No. 202 from Little Rock).

### *The Texas Eagle Train No. 22 (Streamlined Train)*

**Sleepers—**

Houston to Chicago (10 Rmte. 6 DBR) [GM-10]. (G. M. & O. Train 2 St. Louis-Chicago).

Houston to Memphis (14 Rmte. 4DBR) [1221] (No. 202 from Little Rock).

Houston to Washington (Via P.R.R.) (10 Rmte. 6 DBR) [PR-11].  
Houston to New York (Via P.R.R.) (10 Rmte. 6 DBR) [PR-12].

San Antonio to New York (Via P.R.R.) (10 Rmte. 6 DBR) [PR-15]

San Antonio to St. Louis (14 Rmte. 4 DBR) [228].

San Antonio to St. Louis (14 Rmte. 4 DBR) [227].

El Paso to Chicago (14 Rmte. 4 DBR) [GM-23] Train 2 to Little Rock—Train 22 to St. Louis—G. M. & O. Train 2 to Chicago).

**Dining-Lounge Car—**

Houston to St. Louis.  
San Antonio to St. Louis.

**Coaches—(Reclining Seats)**

Houston to St. Louis.  
Corpus Christi-Houston to St. Louis.  
San Antonio to St. Louis (Planetarium).

San Antonio to St. Louis (Grill).

**No Checked Baggage or Remains Will Be Handled On This Train.**

### *Aztec Eagle Train No. 22*

**Sleepers—**

Mexico City to San Antonio (8 Sec. 5 DBR) [266].

**Dining-Lounge Equipment**

Mexico City-Laredo-San Antonio.

**Coaches—(Reclining Seats)**

Mexico City-Laredo-San Antonio (Reserved Seats).

### *Train No. 202*

**Sleepers—**

(Open at Memphis until 7:30 A. M.)  
Ft. Worth to Memphis (14 Rmte. 4 DBR) [27]. (No. 2 to Little Rock).

Houston to Memphis (14 Rmte. 4 DBR) [1221] (Train 22 to Little Rock).

**Coaches—(Reclining Seats)**

Ft. Worth to Memphis.  
(No. 2 to Little Rock).  
Little Rock to Memphis.

### *The Sunshine Special Train No. 32*

**Sleepers—**

Shreveport to St. Louis (14 Rmte. 1 Dr. 2 DBR) [323] (KCS 16 to Texarkana).

El Dorado to St. Louis (10 Rmte. 5 DBR) [324] (No. 822 to Gurdon).

Lake Charles to St. Louis (14 Rmte. 4 DBR.) [1321] (No. 132 to Little Rock).

Hot Springs to St. Louis (14 Rmte. 1 Dr. 2 DBR) [325] (No. 832 to Little Rock).

**Dining-Lounge Car—**  
Little Rock to St. Louis.

**Coaches—(Reclining Seats)**

Texarkana to St. Louis.

### *The Southerner No. 8*

**Sleepers—**

Hot Springs to Chicago (10 Rmte., 6 DBR) [83]. (To Little Rock No. 220, from St. Louis G. M. & O. No. 8.)

**Coaches—(Reclining Seats)**

Ft. Worth to St. Louis.  
Houston to Palestine.  
San Antonio to Texarkana.

**Dining Lounge—**

Texarkana to St. Louis.  
Ft. Worth to Marshall.

### *No. 220*

**Sleepers—**

Hot Springs to Chicago (10 Rmte., 6 DBR) [83]. (Train 8 from Little Rock.)

**Coaches—(Reclining Seats)**

Hot Springs to Memphis.  
Hot Springs to Memphis (Grill).

### *No. 4*

**Coaches—(Reclining Seats)**

Ft. Worth to St. Louis.

### *No. 26*

**Coaches—(Reclining Seats)**

Palestine to Little Rock.

Designating Number of Sleeping or Parlor Cars indicated in brackets [ ].  
Capacity of sleepers shown in parenthesis—(12-1)—12 Section 1 drawing room—(10-1-2) 10 Section 1 drawing room 2 compartment—(14 Rmte. 4 DBR) 14 Roomette  
4 Double Bedroom—(8 Sec. 5 DBR)—8 Section 5 double bedroom. (14 Rmte. 1 Dr. 2 DBR) 14 Roomette 1 Drawing Room 2 Double Bedroom.





**TABLE S KANSAS CITY — FT. SMITH — LITTLE ROCK**

	125		126
Lv KANSAS CITY.....	8.30 Su	Lv LITTLE ROCK.....	8.10Mo
Lv COFFEYVILLE.....	1.50 Su	Lv FT. SMITH.....	1.07Mo
Lv FT. SMITH.....	6.20 Su	Lv COFFEYVILLE.....	5.30Mo
Ar LITTLE ROCK.....	11.00 Su	Ar KANSAS CITY.....	10.45Mo

**Grill—Coach (Reclining Seats):** Between Kansas City and Little Rock.

**TABLE T ST. LOUIS — MEMPHIS — NEW ORLEANS — LAKE CHARLES**

	7-219-103	1-201-131		132-202-32	116-8-220
Lv ST. LOUIS.....	11.59 Sa	5.50 Su	Lv LAKE CHARLES.....	1.05 Su	.....
Lv MEMPHIS.....	8.00 Su	8.30 Su	Lv NEW ORLEANS.....	8.35 Su	7.50 Su
Lv LITTLE ROCK.....	5.50 Su	1.30Mo	Lv ALEXANDRIA.....	4.15 Su	4.30Mo
Ar MONROE.....	11.10 Su	6.30Mo	Lv MONROE.....	6.45Mo	7.10Mo
Ar ALEXANDRIA.....	1.40Mo	8.55Mo	Ar LITTLE ROCK.....	11.15Mo	12.15Mo
Ar NEW ORLEANS.....	6.15Mo	7.15Mo	Ar MEMPHIS.....	7.00Mo	7.00Mo
Ar LAKE CHARLES.....	.....	12.15Mo	Ar ST. LOUIS.....	7.50Mo	11.00Mo

**No. 131**
**Louisiana Sunshine Special**
**Sleeper—**

St. Louis to Lake Charles (14 Rmte. 4 Double Bedroom) [312] (No. 1 to Little Rock.)

**Coach (Reclining Seats):**

Little Rock to Lake Charles.

**Grill—Coach—**Little Rock to Alexandria.

**No. 103**
**Sleepers—**

Little Rock to New Orleans (10 Sec. 1 Dr. 2 Compt.) [1031] (Sleeper open for occupancy until 8:00 AM).

**Grill—Coach—**

Little Rock to Monroe.

**Coach—**Little Rock to New Orleans.

**No. 132**
**Louisiana Sunshine Special**
**Sleeper—**

Lake Charles to St. Louis (14 Rmte. 4 Double Bedroom) [1321] (No. 32 from Little Rock).

**Coach (Reclining Seats):**

Lake Charles to Little Rock.

**Grill—Coach—**Alexandria to Little Rock.

**No. 116—The Southerner**
**Sleepers—**

New Orleans-Little Rock (10 Sec. 1 Dr. 2 Compt.) [1161]

**Coach—**New Orleans-Little Rock.

**Grill Coach**

Monroe to Little Rock.

**TABLE U NEW ORLEANS, BATON ROUGE, BEAUMONT, HOUSTON CALIFORNIA**

	303 Daily	309 Daily		SFe 24-65	
Lv NEW ORLEANS.....	8.35 Su	10.10 Su	Lv SAN FRANCISCO.....	11.00 Fr	.....
Lv BATON ROUGE.....	10.45 Su	12.20Mo	Lv LOS ANGELES.....	1.15 Fr	.....
Ar BEAUMONT.....	3.50 Su	5.30Mo	Ar HOUSTON.....	8.15 Su	.....
Ar HOUSTON.....	6.10 Su	7.50Mo			
	SFe 66-23			304 Daily	310 Daily
Lv HOUSTON.....	6.45 Su	.....	Lv HOUSTON.....	9.05 Su	9.35 Su
Ar SAN FRANCISCO.....	2.45 Tu	.....	Lv BEAUMONT.....	11.25 Su	11.45 Su
Ar LOS ANGELES.....	12.10 Tu	.....	Ar BATON ROUGE.....	5.00 Su	4.20Mo
			Ar NEW ORLEANS.....	7.15 Su	6.40Mo

**Nos. 303 and 304—The Orleanean**

**Cafe-Parlor.....** Between New Orleans and Houston.

**DeLuxe Chair Cars**

**and Coaches (Reclining Seats).....** Between New Orleans and Houston.

**Nos. 309 and 310—The Houstonian**
**Sleeper, 8-Sec. 5 Double**

**BedRoom.....** Between New Orleans and Houston [95-105].

**DeLuxe Chair Cars**

**and Coaches (Reclining Seats).....** Between New Orleans and Houston.

**TABLE V ST. LOUIS AND MEMPHIS TO THE RIO GRANDE VALLEY**

(VIA HOUSTON)	21-201-321 Daily	315 Daily	(VIA HOUSTON)	316 Daily	322 202-22-Daily
Lv ST. LOUIS.....	5.40 Su	.....	Lv BROWNSVILLE.....	8.45 Su	7.00 Su
Lv MEMPHIS.....	8.30 Su	.....	Lv HARLINGEN.....	9.45 Su	7.45 Su
Ar HOUSTON.....	10.40Mo	.....	Lv CORPUS CHRISTI.....	.....	10.05 Su
Lv HOUSTON.....	11.30Mo	9.40Mo	Ar HOUSTON.....	7.30Mo	3.25 Su
Ar CORPUS CHRISTI.....	5.15Mo	.....	Lv HOUSTON.....	.....	4.15 Su
Ar HARLINGEN.....	7.35Mo	6.30 Tu	Ar MEMPHIS.....	.....	7.00Mo
Ar BROWNSVILLE.....	8.25Mo	7.55 Tu	Ar ST. LOUIS.....	.....	8.25Mo

**Nos. 315 and 316—The Pioneer**

**Sleepers.....** Between Houston and Brownsville (8 Sec. 5 Double Bedroom.) [150-160].

**Chair Car & Coaches**

**(Reclining Seats).....** Between Houston and Brownsville.

**Nos. 321 and 322—The Valley Eagle**
**Coaches (Reclining**

**Seats).....** Between Houston and Brownsville. (Grill) Between St. Louis-Houston and Corpus Christi

**SEE AND KNOW YOUR AMERICA**

Whenever you're away, on pleasure or business, look up the Gray Line. Attractive sight-seeing tours can be taken at all important tourist points.

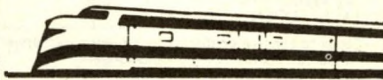
See your local railroad passenger or ticket agent for full information.



**IN SHIPPING... The big difference is**



**safe,  
swift,  
sure**



ST. LOUIS — KANSAS CITY — OMAHA — LINCOLN

Miles	TABLE 1 3-9-58	5-105 Daily	15 Daily	11-119 Daily	9 Daily	35 Daily Ex. Sat. Su. & Holidays
0	Lv ST. LOUIS	8.50	1.50	4.00	11.17	4.25
3	Lv Tower Grove	8.58	1.58	4.07	11.25	4.33
7	Lv Maplewood					4.41
10	Lv Webster Groves	9.10	2.10	4.20	11.40	4.49
13	Lv Kirkwood					4.57
18	Lv Valley Park					5.05
23	Lv Jedburg					5.13
27	Lv Eureka					5.21
30	Lv Allenton					5.29
34	Lv Pacific					5.37
39	Lv Gray Summit					5.45
51	Lv Washington	9.47	2.45		12.20	
64	Lv New Haven		2.58		12.32	
71	Lv Berger		2.67			
77	Lv Hermann		2.75		12.48	
85	Lv Gasconade		2.83			
89	Lv Morrison		2.91			
97	Lv Chamois		3.00		11.13	
102	Lv St. Aubert		3.08			
109	Lv Bonnot's Mill		3.16		1.28	
114	Lv Osage		3.24			
122	Ar Jefferson City	11.00	4.10	6.00	1.55	
122	Lv Jefferson City	11.05	4.20	6.05	2.20	
137	Lv Centertown					
147	Lv California	11.32	4.48		2.46	
153	Lv Clarksburg					
159	Lv Tipton		5.02		3.07	
164	Lv Syracuse					
172	Lv Otterville					
185	Lv Sedalia	12.15	5.43	7.10	4.00	
192	Lv Dresden					
197	Lv Lamonte					
204	Lv Knobnoster		6.03			
208	Lv Montserrat					
215	Lv Warrensburg	12.45	6.21	7.37	4.40	
221	Lv Centerview					
229	Lv Holden		6.39			
239	Lv Strasburg					
246	Lv Pleasant Hill	1.19	6.58	8.04	5.20	
251	Lv Greenwood		7.20			
256	Lv Lee's Summit	1.33	7.20		5.34	
270	Lv Independence	1.55	7.42	8.27	6.00	
279	Ar KANSAS CITY	2.20	8.15	9.00	6.30	
		105		119		
279	Lv KANSAS CITY	2.40		12.40		
282	Lv Kansas City Kan.					
307	Lv Leavenworth	3.15		1.35		
309	Lv Fort Leavenworth	3.20		1.42		
328	Ar Atchison	3.42		2.20		
335	Lv Shannon					
338	Lv Lancaster			2.42		
344	Lv Huron			2.51		
349	Lv Everest			3.01		
355	Lv Willis			3.12		
359	Lv Baker			3.17		
367	Lv Hiawatha			3.45		
372	Lv Padonia	4.24		3.55		
376	Lv Reserve, Kan.			4.02		
382	Lv Falls City, Neb.	4.42		4.16		
392	Lv Verdon			4.30		
398	Lv Stella			4.40		
405	Lv Howe			4.48		
411	Lv Auburn	5.11		5.00		
420	Lv Julian			5.13		
426	Lv Paul			5.23		
433	Lv Nebraska City	5.40		5.40		
444	Ar Union	5.55		6.08		
444	Lv Union	5.55		6.08		
452	Lv Murray			6.19		
459	Lv Plattsouth	6.11		6.29		
468	Lv Fort Crook	6.22		6.43		
478	Ar OMAHA (Un. Sta.)	6.55		7.20		
	Bus			Bus		
444	Lv Union	5.56		8.56		
448	Lv Nehawka			9.00		
	Lv Nehawka Road	6.05		9.04		
457	Lv Weeping Water			9.20		
	Lv Weeping Water Road	6.15		9.30		
468	Lv Elmwood			9.48		
	Lv Elmwood Road	6.28		9.53		
476	Lv Eagle	6.40		10.05		
483	Lv Walton			10.16		
	Lv Walton Road	6.49		10.20		
492	Ar LINCOLN	7.15		10.50		

★—Stops to receive or discharge revenue passengers. f—Stops on signal.  
 ■—Stops to receive revenue passengers.  
 ●—Stops to discharge revenue passengers.  
 #—Stops to receive revenue passengers for Pueblo and beyond.

# Harry S. Truman Library



## A Popular New Attraction for Visitors to Missouri...

In all probability, future generations, and particularly historians, will be the principal beneficiaries of the wealth of material preserved and displayed in the Harry S. Truman Library at Independence, Mo. But you need not be a historian and you don't have to wait to enjoy and appreciate a visit to the Library. You will find a tour through its beautiful museum wing is a fascinating and worthwhile experience to be enjoyed now.

Space limitations prevent even a brief, partial listing of the infinite variety of the Truman Library displays but one of the major attractions pictured above is the Oval Room. Here is an exact reconstruction, authentic in every detail of the former President's office in the west wing of the White House.

The Library stands on an elevated site overlooking Slover Park in Independence. It is open for visitors from 9:00 a.m. to 4:30 p.m., Monday through Saturday and on Sunday from 2:00 p.m. to 5:00 p.m. The entrance fee is 50 cents per person.

All Missouri Pacific trains—four each way every day—stop at Independence. We recommend a stopover there for a trip through the Harry S. Truman Library. It will be an experience you will recall many times with satisfaction and pleasure.

# take time out



# for MUSIC

IF YOUR travels take you through St. Louis or Kansas City this summer treat yourself to a night of delightful entertainment. Plan a stopover and enjoy one of the outstanding musical productions to be presented on the magnificent outdoor stages of the Starlight Theatre in Kansas City or St. Louis' famed Municipal Opera.

Here are the complete summer programs for both:

## THE MUNICIPAL OPERA • ST. LOUIS

June 5-15 . . . . .	"SHOWBOAT"
June 16-22 . . . . .	"ROBERTA"
June 23-29 . . . . .	"SILK STOCKINGS"
June 30-July 6 . . . . .	"ROSE MARIE"
July 7-13 . . . . .	"LADY IN THE DARK"
July 14-20 . . . . .	"ON THE TOWN"
July 21-27 . . . . .	"ROSALINDA"
July 28-August 3 . . . . .	"HAPPY HUNTING"
August 4-10 . . . . .	"FINIAN'S RAINBOW"
August 11-17 . . . . .	"HANSEL AND GRETEL"
August 18-31 . . . . .	Act II "THE NUTCRACKER" Ballet
	"OKLAHOMA"

## THE STARLIGHT THEATRE • KANSAS CITY

June 9-15 . . . . .	"JERRY LEWIS VARIETY SHOW"
June 16-22 . . . . .	"FANNY"
June 23-29 . . . . .	"HAPPY HUNTING"
June 30-July 6 . . . . .	"ROSALINDA"
July 7-13 . . . . .	"KISS ME KATE"
July 14-20 . . . . .	"TOM SAWYER"
July 21-27 . . . . .	"CAROUSEL"
July 28-August 3 . . . . .	"WIZARD OF OZ"
August 4-17 . . . . .	"GUYS AND DOLLS"
August 18-31 . . . . .	"THE MOST HAPPY FELLA"

## LINCOLN — OMAHA — KANSAS CITY — ST. LOUIS

Miles	TABLE 3-9-58	2	Bus 106-6 Daily	12 Daily	Bus 110-10 Daily	
0	Lv LINCOLN . . . . .		7.05		2.40	
9	Lv Walton . . . . .				3.13	
	Lv Walton Road . . . . .		7.35		3.16	
16	Lv Eagle . . . . .		7.45		3.25	
24	Lv Elmwood . . . . .				3.42	
	Lv Elmwood Road . . . . .		7.57		3.47	
35	Lv Weeping Water . . . . .				4.10	
	Lv Weeping Water Road . . . . .		8.10		4.17	
	Lv Nehawka Road . . . . .		8.20		4.27	
44	Lv Nehawka . . . . .				4.31	
48	Ar Union . . . . .		8.35		4.45	
			106		110	
0	Lv OMAHA (Un. Sta.) . . . . .		8.00		4.00	
10	Lv Fort Crook . . . . .		★8.18		f 4.20	
19	Lv Plattsmouth . . . . .		★8.28		4.32	
26	Lv Murray . . . . .					
34	Ar Union . . . . .		8.45		4.55	
34	Lv Union . . . . .		8.45		4.55	
45	Lv Nebraska City . . . . .		8.59		5.13	
52	Lv Paul . . . . .					
58	Lv Julian . . . . .					
67	Lv Auburn . . . . .		9.23		5.53	
73	Lv Howe . . . . .					
80	Lv Stella . . . . .				★ 6.11	
86	Lv Verdon . . . . .					
96	Lv Falls City, Neb. . . . .		9.53		6.40	
102	Lv Reserve, Kan. . . . .					
106	Lv Padonia . . . . .					
111	Lv Hiawatha . . . . .		10.09		7.00	
119	Lv Baker . . . . .					
123	Lv Willis . . . . .					
129	Lv Everest . . . . .					
134	Lv Huron . . . . .					
140	Lv Lancaster . . . . .					
143	Lv Shannon . . . . .					
150	Lv Atchison . . . . .		10.54		8.00	
169	Lv Fort Leavenworth . . . . .		11.13		8.20	
171	Lv Leavenworth . . . . .		11.18		8.30	
196	Lv Kansas City, Kan. . . . .					
199	Ar KANSAS CITY . . . . .		11.59		9.20	
			6	12	14	10
199	Lv KANSAS CITY . . . . .		12.20	7.15	4.00	11.55
208	Lv Independence . . . . .		★12.35	★ 7.30	★ 4.15	f 12.13
222	Lv Lee's Summit . . . . .		★12.50			12.31
227	Lv Greenwood . . . . .					f 12.36
232	Lv Pleasant Hill . . . . .		★1.02	♣ 7.53	★ 4.40	12.50
239	Lv Strasburg . . . . .					
249	Lv Holden . . . . .				4.57	
257	Lv Centerview . . . . .					
263	Lv Warrensburg . . . . .		1.36	★ 8.22	5.15	1.31
270	Lv Montserrat . . . . .					
274	Lv Knobnoster . . . . .				f 5.25	
281	Lv Lamonte . . . . .					
286	Lv Dresden . . . . .					
293	Lv Sedalia . . . . .		2.10	8.52	5.43	2.30
306	Lv Otterville . . . . .					
314	Lv Syracuse . . . . .					
319	Lv Tipton . . . . .				6.18	
325	Lv Clarksburg . . . . .					
331	Lv California . . . . .		★2.48	★ 9.29	6.30	★ 3.07
341	Lv Centertown . . . . .					
356	Ar Jefferson City . . . . .		3.15	9.55	7.10	3.55
356	Lv Jefferson City . . . . .		3.20	10.00	7.20	4.05
364	Lv Osage . . . . .					★ 4.15
369	Lv Bonnot's Mill . . . . .				★ 7.32	
376	Lv St. Aubert . . . . .					
381	Lv Chamois . . . . .				★ 7.45	4.32
389	Lv Morrison . . . . .					★ 4.40
393	Lv Gasconade . . . . .					★ 4.46
401	Lv Hermann . . . . .					★ 4.56
407	Lv Berger . . . . .				8.10	
414	Lv New Haven . . . . .				8.23	
427	Lv Washington . . . . .				8.38	★ 5.12
439	Lv Gray Summit . . . . .		4.28		9.00	5.40
444	Lv Pacific . . . . .					
448	Lv Allenton . . . . .					
451	Lv Eureka . . . . .					
455	Lv Jedburg . . . . .					
460	Lv Valley Park . . . . .					
465	Lv Kirkwood . . . . .				● 9.45	● 6.33
468	Ar Webster Groves . . . . .		● 5.10	● 11.45		● 6.38
471	Ar Maplewood . . . . .					6.47
475	Ar Tower Grove . . . . .		5.22	11.58	9.57	6.55
478	Ar ST. LOUIS . . . . .		5.40	12.15	10.15	7.13

★—Stops to receive or discharge revenue passengers. f—Stops on signal.  
●—Stops to discharge revenue passengers.  
♣—Stops to discharge revenue passengers for Pueblo and beyond.

36 Daily Ex. Sat., Sun., and Holidays  
5.20 f  
5.35 f  
5.43 f  
5.55 f  
6.15 f  
6.24 f  
6.33 f  
6.39 f  
6.57 f  
No checked baggage or remains handled.

ST. LOUIS — KANSAS CITY — COLORADO — UTAH — CALIFORNIA

Miles	TABLE 3 3-9-58	11 Daily	Miles	TABLE 4 3-9-58	12 Daily
0	Lv ST. LOUIS	4.00	0	Lv SAN FRANCISCO	9.25
3	Lv Tower Grove	4.07	7	Lv Oakland	10.10
10	Lv Webster Groves		93	Lv Stockton	12.10
13	Lv Kirkwood	4.20	138	Lv Sacramento (PT)	1.10
51	Lv Washington		927	Ar Salt Lake City (MT)	5.40
122	Lv Jefferson City	6.05	927	Lv Salt Lake City (MT)	5.30
147	Lv California		1312	Lv Glenwood Springs	4.05
185	Lv Sedalia	7.10	1508	Lv Royal Gorge	10.20
215	Lv Warrensburg	7.37	1553	Ar PUEBLO	11.45
246	Lv Pleasant Hill	8.04			
270	Lv Independence	8.27			
279	Ar KANSAS CITY	9.00	0	Lv DENVER	4.15
279	Lv KANSAS CITY	9.10	75	Lv Colorado Springs (D.&R.G.W. STA.)	5.53
331	Lv Paola (M. P. Sta.)				
331	Lv Paola (FSCO. Sta.)	10.00			
			119	Ar PUEBLO	6.45
338	Ar Osawatomie	10.18	1553	Lv PUEBLO	6.55
338	Lv Osawatomie	10.18	1574	Lv Boone	
359	Lv Ottawa	10.38	1593	Lv Olney Springs	
391	Lv Osage City	11.14	1598	Lv Crowley	
411	Lv Allen		1604	Lv Ordway	7.45
429	Lv Council Grove	11.56	1609	Lv Sugar City	7.50
441	Lv Wilsey		1629	Lv Arlington	
456	Lv Herington	12.19	1634	Lv Haswell	
464	Lv Hope		1654	Lv Eads	8.37
476	Lv Carlton		1678	Lv Chivington	
483	Lv Gypsum		1684	Lv Brandon	
501	Lv Lindsborg	1.02	1692	Lv Sheridan Lake	
510	Lv Marquette		1704	Lv Towner, Colo.	
518	Lv Langley		1719	Lv Horace, Kan.	9.33
529	Lv Geneseo	1.40	1721	Lv Tribune	
542	Lv Bushton		1743	Lv Leoti	9.54
550	Lv Clafin		1768	Ar Scott City	10.17
563	Ar Hoisington (CT)	2.19	1768	Lv Scott City	10.17
563	Lv Hoisington (MT)	1.33	1787	Lv Healy	
595	Lv La Crosse	2.01	1795	Lv Shields	
610	Lv McCracken		1810	Lv Utica	10.53
621	Lv Brownell		1823	Lv Ransom	
632	Lv Ransom		1834	Lv Brownell	
645	Lv Utica	2.43	1845	Lv McCracken	
660	Lv Shields		1860	Lv La Crosse	11.34
668	Lv Healy		1892	Ar Hoisington (MT)	12.06
687	Ar Scott City	3.18	1892	Lv Hoisington (CT)	1.18
687	Lv Scott City	3.18	1905	Lv Clafin	
712	Lv Leoti	3.46	1913	Lv Bushton	
734	Lv Tribune		1926	Lv Geneseo	1.57
736	Lv Horace, Kan.	4.16	1937	Lv Langley	
751	Lv Towner, Colo.		1945	Lv Marquette	
763	Lv Sheridan Lake		1954	Lv Lindsborg	2.23
771	Lv Brandon		1972	Lv Gypsum	
777	Lv Chivington		1979	Lv Carlton	
791	Lv Eads	5.05	1991	Lv Hope	
811	Lv Haswell		1999	Lv Herington	3.06
826	Lv Arlington		2014	Lv Wilsey	
846	Lv Sugar City	5.51	2026	Lv Council Grove	3.39
851	Lv Ordway	5.57	2044	Lv Allen	
857	Lv Crowley		2064	Lv Osage City	4.19
862	Lv Olney Springs		2096	Lv Ottawa	4.53
881	Lv Boone		2117	Ar Osawatomie	5.20
902	Ar PUEBLO	7.10	2117	Lv Osawatomie	5.20
			2124	Ar Paola (FSCO. Sta.)	5.33
			2124	Lv Paola (M. P. Sta.)	
902	Lv PUEBLO	7.20	2176	Ar KANSAS CITY	6.55
946	Lv Colorado Springs (A.T.&S.F.Sta.)	8.11	2176	Lv KANSAS CITY	7.15
1021	Ar DENVER	9.50	2185	Lv Independence	7.30
902	Lv PUEBLO	12.15	2209	Lv Pleasant Hill	7.53
947	Ar Royal Gorge	1.36	2240	Lv Warrensburg	8.22
1143	Ar Glenwood Springs	8.17	2270	Lv Sedalia	8.52
1528	Lv Salt Lake City (MT)	8.30	2308	Lv California	9.29
1528	Lv Salt Lake City (MT)	10.15	2333	Lv Jefferson City	10.00
2317	Ar Sacramento (PT)	12.35	2404	Lv Washington	
2362	Ar Stockton	1.42	2442	Ar Kirkwood	11.45
2448	Ar Oakland	3.55	2445	Ar Webster Groves	
2455	Ar SAN FRANCISCO	4.55	2452	Ar Tower Grove	11.58
			2455	Ar ST. LOUIS	12.15

- ★—Stops to receive or discharge revenue passengers.
- f—Stops on signal.
- Stops to receive revenue passengers.
- Stops to discharge revenue passengers.
- ⌈—Stops to receive or discharge revenue passengers for Pueblo and beyond.

Light figures indicate A. M.

Black figures indicate P. M.

Can't I travel in privacy?



Of course, you can! There's no need to prolong the stresses and strains of a busy day when you leave on an overnight trip. You can take a Pullman and *relax* in the private comfort of your own quiet, peaceful quarters!

No other form of time-saving travel is so restful to both mind and body. No weather worries or uncertain schedules... no highway hazards or traffic problems... no searching for meals or lodgings. You haven't a care in the world as you settle down to energy-renewing sleep in a king-size Pullman bed!

Next morning, you arrive at your destination rested and refreshed—and on time. You're in the *center of town*, too. Not miles out, with a time-wasting ride ahead of you.

Try "Travel by Pullman" on your next overnight trip. Make it your regular, restful, safe travel habit. It's an investment in your own personal comfort and well-being... and it brings important benefits to your family and your firm, too!

RELAX IN THE PEACE AND QUIET OF

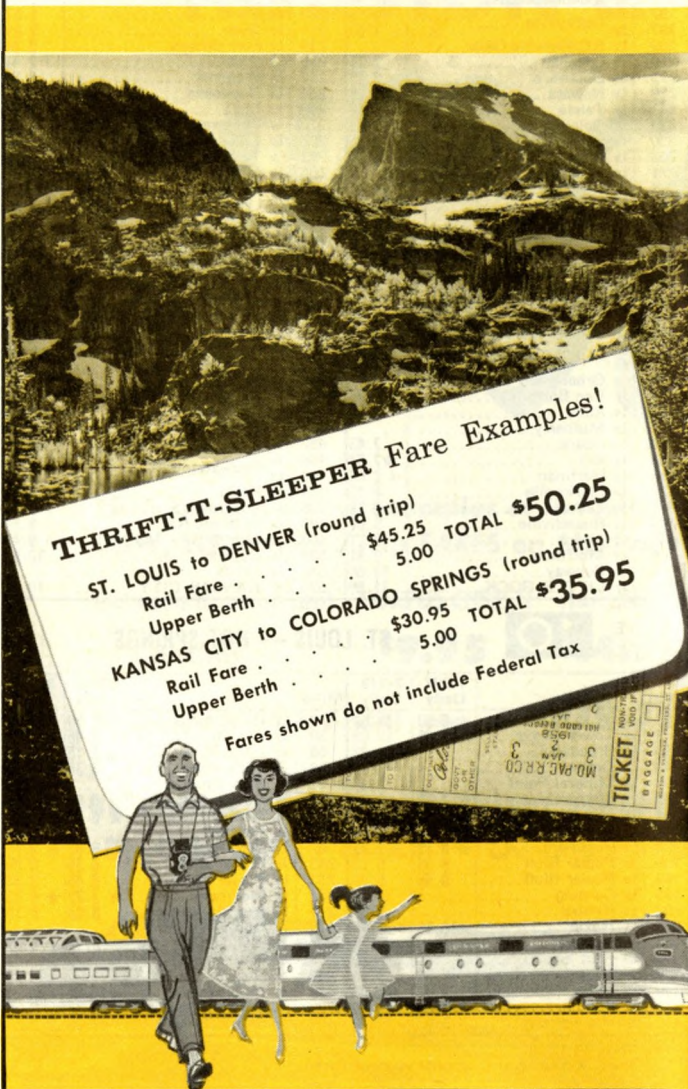


Have a rent-a-car waiting if you wish!

# Sleep 'n Save! New THRIFT-T-SLEEPER

on MO-PAC's Colorado Eagle  
now offers a comfortable overnight  
sleeper trip for the coach fare  
plus as little as \$2.50. Additional  
savings of up to 50% on our  
new "every day" FAMILY PLAN!  
This year... come to cool Colorado!

(Rent-A-Car While You're There. Costs Less Than You Think!)



## THRIFT-T-SLEEPER Fare Examples!

ST. LOUIS to DENVER (round trip)  
Rail Fare . . . . . \$45.25 TOTAL **\$50.25**  
Upper Berth . . . . . 5.00

KANSAS CITY to COLORADO SPRINGS (round trip)  
Rail Fare . . . . . \$30.95 TOTAL **\$35.95**  
Upper Berth . . . . . 5.00

Fares shown do not include Federal Tax



TABLE 5-1-58

**5**

## WICHITA — COLORADO — UTAH — CALIFORNIA

Miles		411-11 Daily	Miles		12-412 Daily
0	Lv WICHITA	10.00		<i>Via Western Pacific</i>	
10	Lv Maize	10.17	0	Lv SAN FRANCISCO	9.25
14	Lv Colwich	10.22	7	Lv Oakland	10.10
19	Lv Andale	10.30	93	Lv Stockton	12.10
25	Lv Mt. Hope	10.38	138	Lv Sacramento (PT)	1.10
32	Lv Haven	10.48	927	Ar SALT LAKE CITY (MT)	5.40
37	Lv Yoder	10.56		<i>Via D. &amp; R. G. W.</i>	
48	Lv HUTCHINSON	11.24	927	Lv SALT LAKE CITY (MT)	5.30
58	Lv Nickerson	11.39	1312	Lv Glenwood Springs	4.05
66	Lv Sterling	11.50	1508	Lv Royal Gorge	10.20
75	Lv Lyons	12.03	1553	Ar PUEBLO	11.45
88	Ar Geneseo	12.23	0	Lv DENVER	4.15
88	Lv Geneseo	1.40	75	Lv COLORADO SPRINGS (D. & R. G. W. Station)	5.53
122	Ar Hoisington (CT)	2.19		Ar PUEBLO	6.45
122	Lv Hoisington (MT)	1.33	119	Lv PUEBLO (Mo. Pac.)	6.55
461	Ar PUEBLO	7.10	1553	Ar Hoisington (MT)	12.06
461	Lv PUEBLO	7.20	1892	Lv Hoisington (CT)	1.18
505	Ar COLORADO SPRINGS (A. T. & S. F. Station)	8.11	1892	Ar Geneseo	1.57
580	Ar DENVER	9.50	1926	Lv Geneseo	4.00
461	Lv PUEBLO	12.15	1939	Lv Lyons	4.20
	<i>Via D. &amp; R. G. W.</i>		1948	Lv Sterling	4.42
506	Ar Royal Gorge	1.36	1956	Lv Nickerson	4.55
702	Ar Glenwood Springs	8.17	1966	Lv HUTCHINSON	5.25
1087	Ar SALT LAKE CITY (MT)	8.30	1977	Lv Yoder	5.40
	<i>Via Western Pacific</i>		1982	Lv Haven	5.55
1087	Lv SALT LAKE CITY (MT)	10.15	1989	Lv Mt. Hope	6.04
1876	Ar Sacramento (PT)	12.35	1995	Lv Andale	6.15
1921	Ar Stockton	1.42	2000	Lv Colwich	6.25
2007	Ar Oakland	3.55	2004	Lv Maize	6.35
2014	Ar SAN FRANCISCO	4.55	2014	Ar WICHITA	7.00

f—Stops on signal. ★—Stops to receive or discharge revenue passengers.

TABLE 3-2-58

**6**

## ST. LOUIS — KANSAS CITY — ATCHISON — DOWNS

Miles		11-119- 519 Daily	Miles		510- 110-10 Daily
0	Lv ST. LOUIS	4.00	0	Lv Downs	12.45
279	Ar KANSAS CITY	9.00	6	Lv Cawker City	12.53
0	Lv KANSAS CITY	12.40	13	Lv Glen Elder	1.03
3	Lv Kansas City, Kan.		20	Lv Solomon Rapids	1.11
28	Lv Leavenworth	1.35	25	Lv Beloit	1.19
30	Lv Ft. Leavenworth	1.42	36	Lv Scottsville	1.35
49	Ar Atchison	2.20	43	Lv Jamestown	1.44
49	Lv Atchison	3.00	49	Lv Yuma	1.52
61	Lv Farmington	3.24	54	Ar Concordia	2.00
66	Lv Effingham	3.34	54	Lv Ames	2.20
73	Lv Muscotah	3.45	65	Lv Clyde	2.36
80	Lv Whiting	3.56	68	Lv Clifton	2.42
85	Lv Netawaka	4.10	75	Lv Palmer	2.53
91	Lv Wetmore	4.21	84	Lv Linn	3.09
98	Lv Goff	4.32	88	Lv Greenleaf	3.19
104	Lv Corning	4.46	95	Lv Barnes	3.31
111	Lv Centralia	5.01	101	Lv Waterville	3.40
119	Lv Vermillion	5.13	108	Lv Blue Rapids	3.52
127	Lv Voeits	5.19	113	Lv Irving	4.01
127	Lv Frankfort	5.31	117	Lv Irving	4.08
134	Lv Bigelow	5.43	123	Lv Bigelow	4.20
140	Lv Irvin	5.57	130	Lv Frankfort	4.32
144	Lv Blue Rapids	5.67	135	Lv Voeits	4.41
149	Lv Waterville	6.00	138	Lv Vermillion	4.49
156	Lv Barnes	6.20	146	Lv Centralia	5.01
162	Lv Greenleaf	6.33	153	Lv Corning	5.13
169	Lv Linn	6.45	159	Lv Goff	5.23
173	Lv Palmer	6.57	166	Lv Wetmore	5.34
182	Lv Clifton	7.23	172	Lv Netawaka	5.43
189	Lv Clyde	7.37	177	Lv Whiting	5.51
192	Lv Ames	7.43	184	Lv Muscotah	6.03
203	Ar Concordia	8.05	191	Lv Effingham	6.17
203	Lv Concordia	8.25	196	Lv Farmington	6.23
208	Lv Yuma	8.33	208	Ar Atchison	7.00
214	Lv Jamestown	8.41	208	Lv Atchison	8.00
221	Lv Scottsville	8.49	227	Lv Ft. Leavenworth	8.20
232	Lv Beloit	9.15	229	Lv Leavenworth	8.30
237	Lv Solomon Rapids	9.23	254	Lv Kansas City, Kan.	
244	Lv Glen Elder	9.33	257	Ar KANSAS CITY	9.20
251	Lv Cawker City	9.43	257	Lv KANSAS CITY	11.55
257	Ar Downs	10.00	536	Ar ST. LOUIS	7.13

TABLE 3-9-58

7

KANSAS CITY — NEWPORT

Miles		10 221 Daily	Miles		232 15 Daily
0	Lv KANSAS CITY	11.55	0	Lv Newport	5.30
10	Lv Independence	f 12.13	3	Lv Diaz	f 5.33
23	Lv Lee's Summit	12.31	9	Lv Paroquet	f 5.42
28	Lv Greenwood	f 12.36	14	Lv Newark	5.47
34	Ar Pleasant Hill	12.50	20	Lv Sulphur Rock	5.58
34	Lv Pleasant Hill	1.20	24	Lv Moorefield	f 6.05
44	Lv Harrisonville	1.41	30	Lv Batesville	6.35
57	Lv Archie	f 1.58	43	Lv O'Neal	f 6.53
63	Lv Adrian	f 2.08	56	Lv Guion	7.12
68	Lv Passaic	f 2.15	69	Lv Sylamore	7.30
72	Lv Butler	2.20	78	Lv Boswell	f 7.42
84	Lv Rich Hill	2.45	84	Lv Creswell	f 7.49
93	Lv Horton	f 2.58	85	Lv Calico Rock	7.55
102	Lv Nevada	3.35	101	Lv Norfork	8.17
109	Lv Milo	f 3.45	113	Lv Buffalo	8.33
116	Lv Sheldon	f 3.56	125	Ar Cotter	8.46
121	Lv Irwin	f 4.03	125	Lv Cotter	9.00
128	Lv Lamar	4.15	130	Lv Flippin	9.10
139	Lv Jasper	f 4.33	136	Lv Yellville	9.20
149	Ar Carthage	5.15	147	Lv Pyatt	9.39
149	Lv Carthage	5.15	152	Lv Zinc	f 9.47
164	Lv La Russell	f 5.33	159	Lv Bergman	9.58
170	Lv Stott's City	f 5.41	176	Lv Cricket	10.25
178	Lv Hoberg	5.51	189	Lv Hollister	10.47
188	Lv Aurora	6.35	203	Lv Reeds Spring	10.57
199	Lv Crane	7.00	212	Lv Galena	11.30
209	Lv Galena	7.17	222	Lv Crane	11.46
218	Lv Reeds Spring	7.30	233	Lv Aurora	12.25
230	Lv Branson	7.58	243	Lv Hoberg	12.41
232	Lv Hollister	8.05	251	Lv Stott's City	f 12.52
245	Lv Cricket	8.27	257	Lv La Russell	f 1.01
262	Lv Bergman	f 9.04	273	Ar Carthage	1.30
269	Lv Zinc	9.14	273	Lv Carthage	1.30
274	Lv Pyatt	9.39	283	Lv Jasper	1.45
285	Lv Yellville	9.49	294	Lv Lamar	2.01
291	Lv Flippin	9.58	301	Lv Irwin	f 2.10
296	Ar Cotter	10.10	306	Lv Sheldon	2.17
296	Lv Cotter	10.24	313	Lv Milo	f 2.26
308	Lv Buffalo	10.40	320	Lv Nevada	2.45
320	Lv Norfork	11.02	329	Lv Horton	f 2.56
336	Lv Calico Rock	f 11.10	332	Lv Rich Hill	3.05
337	Lv Creswell	f 11.17	344	Lv Butler	3.28
343	Lv Boswell	11.31	348	Lv Passaic	f 3.33
352	Lv Sylamore	11.50	353	Lv Adrian	3.44
365	Lv Guion	f 12.09	366	Lv Archie	3.54
378	Lv O'Neal	12.40	379	Lv Harrisonville	4.15
391	Lv Batesville	f 12.51	389	Ar Pleasant Hill	4.35
397	Lv Moorefield	12.57	389	Lv Pleasant Hill	6.58
401	Lv Sulphur Rock	1.05	393	Lv Greenwood	f 7.20
407	Lv Newark	f 1.10	398	Lv Lee's Summit	f 7.25
412	Lv Paroquet	f 1.20	411	Lv Independence	7.42
418	Lv Diaz	1.25	421	Ar KANSAS CITY	8.15
421	Ar Newport				

f—Stops on signal.

★—Stops to receive or discharge revenue passengers.

TABLE 5-1-58

9

KANSAS CITY — FT. SMITH — LITTLE ROCK

Miles		125- 831 Daily	Miles		126 Daily
0	Lv KANSAS CITY	8.30	0	Lv LITTLE ROCK	8.10
9	Lv Leeds	9.00	31	Lv Conway	8.47
16	Lv Dodson	f 9.25	50	Lv Morrilton	9.12
23	Lv Martin City, Mo.	f 9.25	64	Lv Russellville	9.29
32	Lv Stillwell, Kan.	f 9.35	76	Lv Atkins	9.50
57	Lv Bucyrus	9.55	96	Lv Lamar	f 10.20
52	Lv Paola	10.10	102	Lv Clarksville	10.33
59	Ar Osawatomie	10.10	112	Lv Hartman	
59	Lv Osawatomie	10.20	117	Lv Alix	★11.00
68	Lv Lane	★10.33	125	Lv Ozark	11.12
74	Lv Greeley	★10.39	140	Lv Mulberry	11.33
83	Lv Garnett	10.56	150	Lv Alma	f 11.47
100	Lv Westphalia	★11.15	159	Lv Van Buren	12.15
110	Lv Le Roy	11.29	169	Ar Greenwood Jct.	f 12.25
124	Lv Durand	11.50	174	Ar Greenwood Jct.	f 12.25
140	Lv Buffalo	★12.03	174	Lv FORT SMITH	12.37
144	Lv Roper	12.07	169	Lv Greenwood Jct.	f 1.17
147	Lv Benedict	12.10	173	Lv Roland, Okla.	f 1.22
156	Lv Altoona	★12.20	178	Lv Muldrow	1.28
164	Lv Neodesha	12.28	185	Lv Hanson	
178	Lv Independence	12.48	191	Lv Sallisaw	1.44
197	Ar Coffeyville	1.20	202	Lv Vian	1.57
197	Lv Coffeyville	1.50	211	Lv Gore	2.09
200	Lv S.Coffeyville, Okla.	2.11	233	Lv Fort Gibson	2.35
210	Lv Lenapah	2.19	238	Lv Okay	f 2.41
215	Lv Delaware	2.29	247	Lv Wagoner	2.51
220	Lv Nowata	2.46	254	Lv Neodesha	f 3.01
232	Lv Talala	2.54	262	Lv Inola	3.11
238	Lv Oologah	3.25	275	Lv Claremore	3.25
250	Lv Claremore	3.25	287	Lv Oologah	f 3.50
263	Lv Inola	3.39	293	Lv Talala	f 3.58
271	Lv Neodesha	4.00	305	Lv Nowata	4.15
278	Lv Wagoner	4.10	310	Lv Delaware	f 4.23
287	Lv Okay	4.20	315	Lv Lenapah	f 4.31
292	Lv Fort Gibson	4.47	328	Lv S.Coffeyville	
314	Lv Gore	4.58	328	Ar Coffeyville, Kan.	5.00
323	Lv Vian	5.11	347	Lv Independence	5.30
334	Lv Sallisaw	5.11	361	Lv Neodesha	5.53
340	Lv Hanson	5.28	369	Lv Altoona	★6.23
347	Lv Muldrow	f 5.33	378	Lv Benedict	
352	Lv Roland	5.50	381	Lv Roper	
356	Ar Greenwood Jct.	5.50	385	Lv Buffalo	★6.41
361	Ar FORT SMITH	6.20	401	Ar Durand	6.55
361	Lv Greenwood Jct.	6.36	415	Lv Le Roy	7.30
366	Ar Van Buren	7.12	425	Lv Westphalia	★7.45
375	Lv Alma	7.43	442	Lv Garnett	8.08
385	Lv Mulberry	7.43	451	Lv Greeley	★8.20
400	Lv Ozark	★7.55	457	Lv Lane	★8.27
408	Lv Alix	f 8.03	466	Lv Osawatomie	8.55
413	Lv Hartman	8.18	466	Lv	8.55
423	Lv Clarksville	f 8.28	473	Lv Paola	9.07
429	Lv Lamar	8.48	488	Lv Bucyrus	f 9.27
449	Lv Russellville	9.01	493	Lv Stillwell, Kan.	f 9.34
461	Lv Atkins	9.21	502	Lv Martin City, Mo.	f 9.48
475	Lv Morrilton	9.41	509	Lv Dodson	10.00
494	Lv Conway	10.06	516	Lv Leeds	
525	Ar LITTLE ROCK	11.00	525	Ar KANSAS CITY	10.45

TABLE 5-1-58

10

ST. LOUIS — HOT SPRINGS

Miles		1-831 Daily	7-219 Daily	Miles		220-8 Daily	832-32 Daily
0	Lv ST. LOUIS	5.50	11.59	0	Lv Hot Springs	2.00	8.00
3	Lv Tower Grove	6.01	12.08	30	Lv Benton	2.45	8.50
10	Lv Broadway	★12.23	1.09	53	Ar Little Rock	3.15	9.25
45	Lv DeSoto	1.09	53	Lv Little Rock	3.35	11.50	
64	Lv Mineral Point	1.37	111	Lv Bald Knob		12.47	
79	Lv Bismarck	★7.32	1.14	138	Lv Newport	5.00	1.20
84	Lv Iron Mountain	★7.32	2.24	173	Lv Hoxie	★5.35	2.05
92	Lv Arcadia-Ironton	2.24	200	Lv Knobel			
130	Lv Piedmont	★8.32	3.29	207	Lv Corning	★6.05	★2.40
169	Ar Poplar Bluff	9.35	5.10	233	Ar Poplar Bluff	6.35	3.25
169	Lv Poplar Bluff	9.45	5.20	233	Lv Poplar Bluff	6.45	3.35
195	Lv Corning	5.49	272	Lv Piedmont	★7.32	★4.23	
202	Lv Knobel	5.57	310	Lv Arcadia-Ironton	8.23	5.15	
229	Lv Hoxie	★10.35	6.45	318	Lv Iron Mountain		
264	Lv Newport	7.45	323	Lv Bismarck	8.43	5.37	
291	Lv Bald Knob	8.20	338	Lv Mineral Point			
349	Ar Little Rock	12.30	9.45	357	Lv DeSoto		6.15
349	Lv Little Rock	2.30	11.20	392	Ar Broadway	★10.21	
372	Lv Benton	3.05	11.44	399	Ar Tower Grove	10.37	7.30
402	Ar Hot Springs	4.00	12.45	402	Ar ST. LOUIS	11.00	7.50

f—Stops on signal.

★—Stops to receive or discharge revenue passengers.

# When Away From Home

... remember this symbol of help for all travelers and newcomers in trouble. You will find the Travelers Aid Lamp in all major rail terminals. Travelers Aid is a social service supported by voluntary contributions through Community Chests and United Funds.



Along the Missouri Pacific Travelers Aid Is In...

ST. LOUIS • KANSAS CITY • OMAHA • DENVER  
MEMPHIS • TEXARKANA • HOUSTON  
SAN ANTONIO • NEW ORLEANS

# RAIL FARES SLASHED

**ALL POINTS BETWEEN  
HOUSTON & BROWNSVILLE**

**SAVE  
ALMOST 50%**

Here are just a few examples of the new  
**LOW, LOW Round Trip FARES** on Mo-Pac's Valley Route

Between Houston and **CORPUS CHRISTI HARLINGEN BROWNSVILLE**

In Coaches **\$9.95 \$14.71 \$15.78**

In Sleepers (incl. Berth) — **\$19.71 \$20.78**

plus 10% Federal Tax

**YOUR CHOICE OF TWO CONVENIENT SCHEDULES DAILY:**

**Daylight VALLEY EAGLE • Overnight PIONEER**

**SAME  
LUXURY  
SERVICE**

- Soft, reclining seats
- Air-conditioned comfort
- Money-Saving Family Fare Plan
- Convenient auto-rental arrangements

**R. J. McDERMOTT**

Gen. Passenger Traffic Manager

1601 Missouri Pacific Building

St. Louis 3, Missouri

**MISSOURI  
PACIFIC  
LINES**



ST. LOUIS — LITTLE ROCK — DALLAS —  
FT. WORTH — EL PASO — LOS ANGELES

**11**

TABLE  
5-1-58

1 Daily

7 Daily

21 Daily

TABLE  
5-1-58

**12**

25 Daily

7-37 Daily

Miles

TABLE  
5-1-58

**13**

21-121 Daily

25-121 Daily

7-137 Daily

0	Lv ST. LOUIS.....	11:59
3	Lv Tower Grove.....	12:08
10	Lv Broadway.....	12:23
13	Lv Jefferson B'ks.....	★
20	Lv Kimmswick.....	1:09
30	Lv Riverside.....	★
45	Lv De Soto.....	★
54	Lv Blackwell.....	1:23
60	Lv Cadet.....	1:31
64	Lv Mineral Point.....	1:37
73	Lv Irondate.....	★
79	Lv Bismarck.....	2:14
84	Lv Iron Mountain.....	★
86	Lv Middlebrook.....	★
92	Lv Arcadia-Fronton.....	★
102	Lv Glover.....	2:50
103	Lv Chloride.....	★
111	Lv Annapolis.....	3:01
115	Lv North Des Arc.....	3:06
130	Lv Piedmont.....	3:29
136	Lv Leeper.....	3:38
138	Lv Mill Spring.....	★
149	Lv Williamsonville.....	★
156	Lv Hendrickson.....	★
169	Lv Poplar Bluff.....	★
184	Lv Neelyville, Mo.....	5:10
189	Lv Moark, Ark.....	5:20
195	Lv Corning.....	5:37
202	Lv Knobel.....	★
206	Lv Peach Orchard.....	★
211	Lv Delaplaine.....	★
218	Lv O'Kean.....	6:14
228	Lv Walnut Ridge.....	6:45
229	Lv Hoxie.....	★
236	Lv Minturn.....	7:10
242	Lv Alicia.....	★
247	Lv Swifton.....	★
251	Lv Vance.....	★
255	Lv Tuckerman.....	★
263	Lv Diaz.....	★
264	Lv Newport.....	7:45
273	Lv Olyphant.....	★
281	Lv Bradford.....	★
286	Lv Russell.....	★
291	Lv Bald Knob.....	8:20
296	Lv Judsonia.....	★
300	Lv Kensett-Searcy.....	8:35
303	Lv Higginson.....	★
309	Lv McRae.....	★
316	Lv Beebe.....	8:55
324	Lv Austin.....	★
326	Lv Cabot.....	★
335	Lv Jacksonville.....	★
347	Lv North Little Rock.....	9:45
349	Lv LITTLE ROCK.....	11:25
349	Lv LITTLE ROCK.....	12:55
372	Lv Benton.....	11:49
380	Lv Traskwood.....	★
392	Lv Malvern.....	★
403	Lv Donaldson.....	★
414	Lv Arkadelphia.....	★
425	Lv Curtis.....	★
429	Lv Gurdon.....	★
441	Lv Boughton.....	★
446	Lv Prescott.....	3:00
453	Lv Emmet.....	3:10
461	Lv Hope.....	3:35
474	Lv Fulton.....	★
481	Lv Homan.....	★
493	Lv TEXARKANA.....	4:30

ST. LOUIS — LITTLE ROCK —  
SAN ANTONIO — MEXICO CITY

0	Lv ST. LOUIS.....	11:59
3	Lv Tower Grove.....	12:08
10	Lv Broadway.....	12:23
13	Lv Jefferson B'ks.....	★
20	Lv Kimmswick.....	1:09
30	Lv Riverside.....	★
45	Lv De Soto.....	★
54	Lv Blackwell.....	1:23
60	Lv Cadet.....	1:31
64	Lv Mineral Point.....	1:37
73	Lv Irondate.....	★
79	Lv Bismarck.....	2:14
84	Lv Iron Mountain.....	★
86	Lv Middlebrook.....	★
92	Lv Arcadia-Fronton.....	★
102	Lv Glover.....	2:50
103	Lv Chloride.....	★
111	Lv Annapolis.....	3:01
115	Lv North Des Arc.....	3:06
130	Lv Piedmont.....	3:29
136	Lv Leeper.....	3:38
138	Lv Mill Spring.....	★
149	Lv Williamsonville.....	★
156	Lv Hendrickson.....	★
169	Lv Poplar Bluff.....	★
184	Lv Neelyville, Mo.....	5:10
189	Lv Moark, Ark.....	5:20
195	Lv Corning.....	5:37
202	Lv Knobel.....	★
206	Lv Peach Orchard.....	★
211	Lv Delaplaine.....	★
218	Lv O'Kean.....	6:14
228	Lv Walnut Ridge.....	6:45
229	Lv Hoxie.....	★
236	Lv Minturn.....	7:10
242	Lv Alicia.....	★
247	Lv Swifton.....	★
251	Lv Vance.....	★
255	Lv Tuckerman.....	★
263	Lv Diaz.....	★
264	Lv Newport.....	7:45
273	Lv Olyphant.....	★
281	Lv Bradford.....	★
286	Lv Russell.....	★
291	Lv Bald Knob.....	8:20
296	Lv Judsonia.....	★
300	Lv Kensett-Searcy.....	8:35
303	Lv Higginson.....	★
309	Lv McRae.....	★
316	Lv Beebe.....	8:55
324	Lv Austin.....	★
326	Lv Cabot.....	★
335	Lv Jacksonville.....	★
347	Lv North Little Rock.....	9:45
349	Lv LITTLE ROCK.....	11:25
349	Lv LITTLE ROCK.....	12:25
372	Lv Benton.....	11:49
380	Lv Traskwood.....	★
392	Lv Malvern.....	★
403	Lv Donaldson.....	★
414	Lv Arkadelphia.....	★
425	Lv Curtis.....	★
429	Lv Gurdon.....	★
441	Lv Boughton.....	★
446	Lv Prescott.....	1:15
453	Lv Emmet.....	1:40
461	Lv Hope.....	★
474	Lv Fulton.....	★
481	Lv Homan.....	★
493	Lv TEXARKANA.....	3:05

ST. LOUIS — LITTLE ROCK — HOUSTON

0	Lv ST. LOUIS.....	5:40
3	Lv Tower Grove.....	5:53
10	Lv Broadway.....	★
13	Lv Jefferson B'ks.....	★
20	Lv Kimmswick.....	6:52
30	Lv Riverside.....	★
45	Lv De Soto.....	★
54	Lv Blackwell.....	7:09
60	Lv Cadet.....	★
64	Lv Mineral Point.....	★
73	Lv Irondate.....	★
79	Lv Bismarck.....	★
84	Lv Iron Mountain.....	★
86	Lv Middlebrook.....	★
92	Lv Arcadia-Fronton.....	★
102	Lv Glover.....	7:36
103	Lv Chloride.....	★
111	Lv Annapolis.....	★
115	Lv North Des Arc.....	★
130	Lv Piedmont.....	★
136	Lv Leeper.....	★
138	Lv Mill Spring.....	★
149	Lv Williamsonville.....	★
156	Lv Hendrickson.....	★
169	Lv Poplar Bluff.....	★
184	Lv Neelyville, Mo.....	★
189	Lv Moark, Ark.....	★
195	Lv Corning.....	★
202	Lv Knobel.....	★
206	Lv Peach Orchard.....	★
211	Lv Delaplaine.....	★
218	Lv O'Kean.....	★
228	Lv Walnut Ridge.....	★
229	Lv Hoxie.....	★
236	Lv Minturn.....	7:10
242	Lv Alicia.....	★
247	Lv Swifton.....	★
251	Lv Vance.....	★
255	Lv Tuckerman.....	★
263	Lv Diaz.....	★
264	Lv Newport.....	★
273	Lv Olyphant.....	★
281	Lv Bradford.....	★
286	Lv Russell.....	★
291	Lv Bald Knob.....	★
296	Lv Judsonia.....	★
300	Lv Kensett-Searcy.....	★
303	Lv Higginson.....	★
309	Lv McRae.....	★
316	Lv Beebe.....	★
324	Lv Austin.....	★
326	Lv Cabot.....	★
335	Lv Jacksonville.....	★
347	Lv North Little Rock.....	★
349	Lv LITTLE ROCK.....	★
349	Lv LITTLE ROCK.....	★
372	Lv Benton.....	★
380	Lv Traskwood.....	★
392	Lv Malvern.....	★
403	Lv Donaldson.....	★
414	Lv Arkadelphia.....	★
425	Lv Curtis.....	★
429	Lv Gurdon.....	★
441	Lv Boughton.....	★
446	Lv Prescott.....	★
453	Lv Emmet.....	★
461	Lv Hope.....	★
474	Lv Fulton.....	★
481	Lv Homan.....	★
493	Lv TEXARKANA.....	★



MEMPHIS — LITTLE ROCK — DALLAS — FT. WORTH — EL PASO — LOS ANGELES		MEMPHIS — LITTLE ROCK — SAN ANTONIO — MEXICO CITY		MEMPHIS — LITTLE ROCK — HOUSTON	
493	Lv TEXARKANA (T&P)	3.40	4.51	493	Lv TEXARKANA (T&P)
560	Ar Marshall	5.20	6.30	517	Ar Atlanta
583	Lv Longview	5.35	6.45	560	Ar Marshall
596	Ar Gladewater	5.50	6.60	583	Ar Longview
629	Ar Mineola	6.10	7.20	596	Ar Longview (M. P.)
642	Ar Grand Saline	6.25	7.35	605	Lv Kilgore
676	Ar Terrell	6.55	7.65	605	Lv Overton
710	Lv DALLAS	7.40	8.50	612	Lv Arp
742	Ar FORT WORTH	8.50	9.60	619	Lv Jackson
773	Ar FORT WORTH	9.50	10.60	633	Lv Neches
787	Ar Weatherford	10.32	11.42	654	Lv Palestine
837	Ar Mineral Wells	11.30	12.40	674	Lv Elkhart
847	Ar Ranger	11.55	13.05	682	Lv Salton
857	Ar Cisco	12.10	13.20	695	Lv Grapeland
882	Ar Baird	12.25	13.35	702	Lv Latexo
903	Ar Abilene	1.40	2.50	708	Lv Crockett
944	Ar Sweetwater	2.35	3.45	715	Lv Ovelady
1009	Ar Big Spring	3.55	4.65	730	Lv Red Branch
1049	Ar Midland	4.57	5.67	736	Lv Trinity
1109	Ar MONAHANS	5.05	6.15	744	Lv Riverside
1143	Ar Pecos	6.05	7.15	748	Lv Phelps
1232	Ar Van Horn	8.45	9.55	760	Lv New Waverly
1357	Ar EL PASO (M. T.)	10.45	11.55	769	Lv Willis
1357	Lv EL PASO (MT. SP)	11.55	12.65	776	Lv Conroe
1668	Ar TUCSON	5.55	6.65	784	Lv Tamina
1790	Ar PHOENIX	8.30	9.40	792	Lv Spring
2070	Ar West Palm Springs (PT)	1.23	2.33	796	Lv Westfield
2165	Ar Alhambra (Pasadena)	3.55	4.65	803	Lv Aldine
2169	Ar LOS ANGELES	4.15	5.25	815	Ar HOUSTON

**MEMPHIS — LITTLE ROCK — HOUSTON**

**MEMPHIS — LITTLE ROCK — SAN ANTONIO — MEXICO CITY**

**MEMPHIS — LITTLE ROCK — DALLAS — FT. WORTH — EL PASO — LOS ANGELES**

Miles	201-1 Daily	219-7 Daily	201-21 Daily	219-7 Daily
0	MEMPHIS	8.00	MEMPHIS	8.00
17	Lv Crawfordville	8.33	Lv Crawfordville	8.33
27	Lv Earle	9.00	Lv Earle	8.33
32	Lv Parkin	9.33	Lv Parkin	9.00
46	Lv Wynne	9.67	Lv Wynne	9.33
59	Lv Fair Oaks	10.00	Lv Fair Oaks	9.67
69	Lv McCrory	10.33	Lv McCrory	10.00
79	Lv New Augusta	10.67	Lv New Augusta	10.33
91	Lv Bald Knob	11.00	Lv Bald Knob	10.67
91	Lv Bald Knob	11.00	Lv Bald Knob	10.67
99	Lv Kensett	11.33	Lv Kensett	11.00
116	Lv Beebe	11.67	Lv Beebe	11.33
135	Lv Jacksonville	12.00	Lv Jacksonville	11.67
147	Lv North Little Rock	12.33	Lv North Little Rock	12.00
149	Lv LITTLE ROCK	12.67	Lv LITTLE ROCK	12.33
172	Lv Benton	13.00	Lv Benton	12.67
180	Lv Traskwood	13.33	Lv Traskwood	13.00
192	Lv Malvern	13.67	Lv Malvern	13.33
203	Lv Donaldson	14.00	Lv Donaldson	13.67
214	Lv Arkadelphia	14.33	Lv Arkadelphia	14.00
225	Lv Curtis	14.67	Lv Curtis	14.33
229	Lv Gurdion	15.00	Lv Gurdion	14.67
241	Lv Boughton	15.33	Lv Boughton	15.00
246	Lv Prescott	15.67	Lv Prescott	15.33
253	Lv Emmet	16.00	Lv Emmet	15.67
261	Lv Hope	16.33	Lv Hope	16.00
261	Lv Hope	16.33	Lv Hope	16.00
274	Lv Fulton	16.67	Lv Fulton	16.33
281	Lv Homan	17.00	Lv Homan	16.67
293	Lv TEXARKANA	17.33	Lv TEXARKANA	17.00
464	Ar PALESTINE	18.67	Ar PALESTINE	18.33
727	Ar SAN ANTONIO	20.00	Ar SAN ANTONIO	19.67
874	Ar LAREDO	21.33	Ar LAREDO	21.00
1045	Ar MONTERREY	22.67	Ar MONTERREY	22.33
1680	Ar MEXICO CITY	24.00	Ar MEXICO CITY	23.67

★ — Stops to receive or discharge revenue passengers.  
 ● — Stops to discharge revenue passengers.  
 Light figures indicate A. M.  
 Black figures indicate P. M.

LOS ANGELES — EL PASO — FT. WORTH —  
DALLAS — LITTLE ROCK — ST. LOUIS

TABLE  
5-1-58  
**14**

Miles  
0  
4  
99  
379  
501  
812

lv LOS ANGELES (S. P.)  
lv ALHAMBRA (Pasadena)  
lv West Palm Springs  
lv PHOENIX (MT)  
lv TUCSON  
lv EL PASO

lv EL PASO (T. & P.) (MT)  
lv Van Horn (CT)

1026 lv Pecos  
1060 lv Monahans  
1120 lv Midland  
1160 lv Big Spring  
1225 lv Sweetwater  
1266 lv Abilene  
1287 lv Baird  
1312 lv Cisco  
1322 lv Eastland  
1332 lv Ranger

1382 lv Mineral Wells  
1396 lv Weatherford  
1427 lv FORT WORTH  
1477 lv FORT WORTH  
1459 lv DALLAS  
1459 lv DALLAS  
1493 lv Terrell  
1527 lv Grand Saline  
1573 lv Mineola  
1573 lv Gladewater  
1586 lv Longview  
1596 lv Longview  
1609 lv Marshall  
1676 lv TEXARKANA

1688 lv Homan  
1695 lv Fulton  
1708 lv Hope  
1716 lv Emmet  
1723 lv Prescott  
1728 lv Boughton  
1740 lv Gurdon  
1744 lv Curtis  
1755 lv Arkadelphia  
1766 lv Donaldson  
1777 lv Malvern  
1789 lv Traskwood  
1797 lv Benton

1820 lv LITTLE ROCK  
1820 lv LITTLE ROCK  
1822 lv North Little Rock  
1834 lv Jacksonville  
1843 lv Cabot  
1845 lv Austin  
1853 lv Beebe  
1860 lv McRae  
1866 lv Higginson  
1873 lv Kennett-Searcy  
1878 lv Judsonia  
1883 lv Bald Knob  
1888 lv Russell  
1888 lv Bradford  
1896 lv Olyphant  
1905 lv Newport  
1906 lv Diaz  
1914 lv Tuckerman  
1918 lv Vance  
1922 lv Swifton  
1927 lv Alicia  
1933 lv Minturn  
1933 lv Minturn

1940 lv Hoxie  
1941 lv Walnut Ridge  
1951 lv O'Kean  
1958 lv Delaplaine  
1963 lv Peach Orchard  
1967 lv Knobel  
1974 lv Knobel  
1980 lv Moark  
1985 lv Neelyville, Mo.  
2000 lv POPLAR BLUFF

2 Daily  
10 00  
10 23  
10 23  
10 30  
2 10  
10 00

4 Daily  
8 30  
9 15  
10 10  
11 10  
12 20

8 Daily  
8 05  
8 45  
9 30  
10 15  
8 40  
3 05

22 Daily  
8 20  
8 35  
1 40  
3 50  
8 00

22-26 Daily  
8 20  
6 35  
1 40  
3 50  
8 00

38-8 Daily  
9 05  
9 56  
10 34  
10 50  
11 09  
11 34  
12 13  
12 13  
12 30  
2 30  
3 35  
3 35  
3 24  
3 24  
3 53  
4 53  
5 20  
6 00  
6 00  
7 15  
7 35  
8 21  
11 10  
11 10  
12 20

38-8 Daily  
8 15  
8 23  
9 02  
10 35  
11 45  
12 35  
12 47  
1 52  
4 40  
5 36  
7 16  
7 16  
8 49  
9 15  
9 25  
8 10  
8 30  
11 15  
11 30

122-22 Daily  
4 15

122-26 Daily  
4 15

138-8 Daily  
11 45  
12 14  
12 22  
12 29  
12 38  
12 55  
1 09  
1 25  
1 43  
1 52  
2 04  
2 15  
2 36  
2 47  
2 58  
3 06  
3 20  
3 31  
3 52  
4 30  
5 30  
6 21  
6 57  
7 08

MEXICO CITY — SAN ANTONIO —  
LITTLE ROCK — ST. LOUIS

TABLE  
5-1-58  
**15**

Miles  
0  
326  
568  
635  
801

(Nort./E. Rts. of Mexico)  
lv MEXICO CITY  
lv San Luis Potosi  
lv Saltillo  
lv MONTERREY  
lv NUEVO LAREDO

lv LAREDO  
lv Encinal  
lv Cotulla  
lv Gardendale  
lv Dilley  
lv Pearsall  
lv DeWitt

9 05  
9 56  
10 34  
10 50  
11 09  
11 34  
12 13  
12 13  
12 30  
2 30  
3 35  
3 35  
3 24  
3 24  
3 53  
4 53  
5 20  
6 00  
6 00  
7 15  
7 35  
8 21  
11 10  
11 10  
12 20

8 20  
6 35  
1 40  
3 50  
8 00

22 Daily  
9 05  
9 56  
10 34  
10 50  
11 09  
11 34  
12 13  
12 13  
12 30  
2 30  
3 35  
3 35  
3 24  
3 24  
3 53  
4 53  
5 20  
6 00  
6 00  
7 15  
7 35  
8 21  
11 10  
11 10  
12 20

22-26 Daily  
8 20  
6 35  
1 40  
3 50  
8 00

38-8 Daily  
9 05  
9 56  
10 34  
10 50  
11 09  
11 34  
12 13  
12 13  
12 30  
2 30  
3 35  
3 35  
3 24  
3 24  
3 53  
4 53  
5 20  
6 00  
6 00  
7 15  
7 35  
8 21  
11 10  
11 10  
12 20

38-8 Daily  
8 15  
8 23  
9 02  
10 35  
11 45  
12 35  
12 47  
1 52  
4 40  
5 36  
7 16  
7 16  
8 49  
9 15  
9 25  
8 10  
8 30  
11 15  
11 30

122-22 Daily  
4 15

122-26 Daily  
4 15

138-8 Daily  
11 45  
12 14  
12 22  
12 29  
12 38  
12 55  
1 09  
1 25  
1 43  
1 52  
2 04  
2 15  
2 36  
2 47  
2 58  
3 06  
3 20  
3 31  
3 52  
4 30  
5 30  
6 21  
6 57  
7 08

HOUSTON — LITTLE ROCK —  
ST. LOUIS

TABLE  
5-1-58  
**16**

Miles  
0  
13  
19  
23  
30  
37  
49  
55  
71  
79  
86  
95  
107  
113  
120  
126  
133  
139  
152  
152  
178  
203  
210  
220  
232  
232  
255  
255  
322

lv HOUSTON  
lv Aldine  
lv Westfield  
lv Spring  
lv Tamina  
lv Conroe  
lv Willis  
lv New Waverly  
lv Phelps  
lv Dodge  
lv Riverside  
lv Trinity  
lv Red Branch  
lv Lovelady  
lv Cut  
lv Crockett  
lv Latexo  
lv Grapeland  
lv Salm  
lv Elkhart  
lv Palestine  
lv Jacksonville  
lv Troup

9 05  
9 56  
10 34  
10 50  
11 09  
11 34  
12 13  
12 13  
12 30  
2 30  
3 35  
3 35  
3 24  
3 24  
3 53  
4 53  
5 20  
6 00  
6 00  
7 15  
7 35  
8 21  
11 10  
11 10  
12 20

8 20  
6 35  
1 40  
3 50  
8 00

22 Daily  
8 20  
8 35  
1 40  
3 50  
8 00

22-26 Daily  
8 20  
6 35  
1 40  
3 50  
8 00

38-8 Daily  
9 05  
9 56  
10 34  
10 50  
11 09  
11 34  
12 13  
12 13  
12 30  
2 30  
3 35  
3 35  
3 24  
3 24  
3 53  
4 53  
5 20  
6 00  
6 00  
7 15  
7 35  
8 21  
11 10  
11 10  
12 20

38-8 Daily  
8 15  
8 23  
9 02  
10 35  
11 45  
12 35  
12 47  
1 52  
4 40  
5 36  
7 16  
7 16  
8 49  
9 15  
9 25  
8 10  
8 30  
11 15  
11 30

122-22 Daily  
4 15

122-26 Daily  
4 15

138-8 Daily  
11 45  
12 14  
12 22  
12 29  
12 38  
12 55  
1 09  
1 25  
1 43  
1 52  
2 04  
2 15  
2 36  
2 47  
2 58  
3 06  
3 20  
3 31  
3 52  
4 30  
5 30  
6 21  
6 57  
7 08

138-8 Daily  
11 45  
12 14  
12 22  
12 29  
12 38  
12 55  
1 09  
1 25  
1 43  
1 52  
2 04  
2 15  
2 36  
2 47  
2 58  
3 06  
3 20  
3 31  
3 52  
4 30  
5 30  
6 21  
6 57  
7 08

Streamlined Train  
1.45  
2.00

The Texas Eagle

The Southern

The Texas Eagle  
4.40

Streamlined Train  
1.45  
2.00

The Texas Eagle  
4.40

Miles	2-2021 Daily	3-2021 Daily	4 Daily	8-220 Daily	6-45 Daily	4-50 Daily	6-45 Daily	4-50 Daily	6-45 Daily	6-45 Daily
2000	Lv POPLAR BLUFF.....	4.20	3.35	1.00	6.45	1711	Lv POPLAR BLUFF.....	4.50	6.45	6.45
2013	Lv Hendrickson.....			1.16		1724	Lv Hendrickson.....			
2020	Lv Williamsville.....			1.25		1731	Lv Williamsville.....			
2031	Lv Mill Spring.....			1.38		1742	Lv Mill Spring.....			
2033	Lv Leeper.....			1.41		1744	Lv Leeper.....			
2039	Lv Piedmont.....	4.23	4.23	1.50	7.32	1750	Lv Piedmont.....	7.32	7.32	7.32
2054	Lv North Des Arc.....			2.09		1765	Lv North Des Arc.....			
2058	Lv Annapolis.....			2.15		1769	Lv Annapolis.....			
2066	Lv Chloride.....			2.27		1777	Lv Chloride.....			
2077	Lv Glover.....			2.41	8.23	1778	Lv Glover.....			
2083	Lv Arcadia-Ironton.....	5.15	5.15	2.51		1784	Lv Arcadia-Ironton.....	8.23	8.23	8.23
2085	Lv Middlebrook.....			2.54		1794	Lv Middlebrook.....			
2090	Lv Iron Mountain.....			3.10	8.43	1796	Lv Iron Mountain.....			
2096	Lv Bismarck.....	5.37	5.37	3.19		1801	Lv Bismarck.....			
2105	Lv Irontdale.....			3.30		1807	Lv Irontdale.....			
2109	Lv Mineral Point.....			3.36		1816	Lv Mineral Point.....			
2115	Lv Cadet.....			3.44		1820	Lv Cadet.....			
2124	Lv Blackwell.....	6.15	6.15	4.00		1826	Lv Blackwell.....			
2139	Lv De Soto.....			4.00		1835	Lv De Soto.....			
2145	Lv Riverside.....			4.55		1850	Lv Riverside.....			
2156	Lv Kimmswick.....			4.55		1856	Lv Kimmswick.....			
2159	Lv Jefferson B'ks.....			5.01	10.21	1867	Lv Jefferson B'ks.....	10.21	10.21	10.21
2166	Lv Broadway.....	7.56	7.30	5.14	10.57	1870	Lv Broadway.....	8.10	10.57	10.57
2169	Lv Tower Grove.....	8.10	7.50	5.38	11.00	1880	Lv Tower Grove.....	8.25	11.00	11.00
	Lv ST. LOUIS.....						Lv ST. LOUIS.....			

**LOS ANGELES — EL PASO — FT. WORTH — DALLAS — LITTLE ROCK — MEMPHIS**

**MEXICO CITY — SAN ANTONIO — LITTLE ROCK — MEMPHIS**

**HOUSTON — LITTLE ROCK — MEMPHIS**

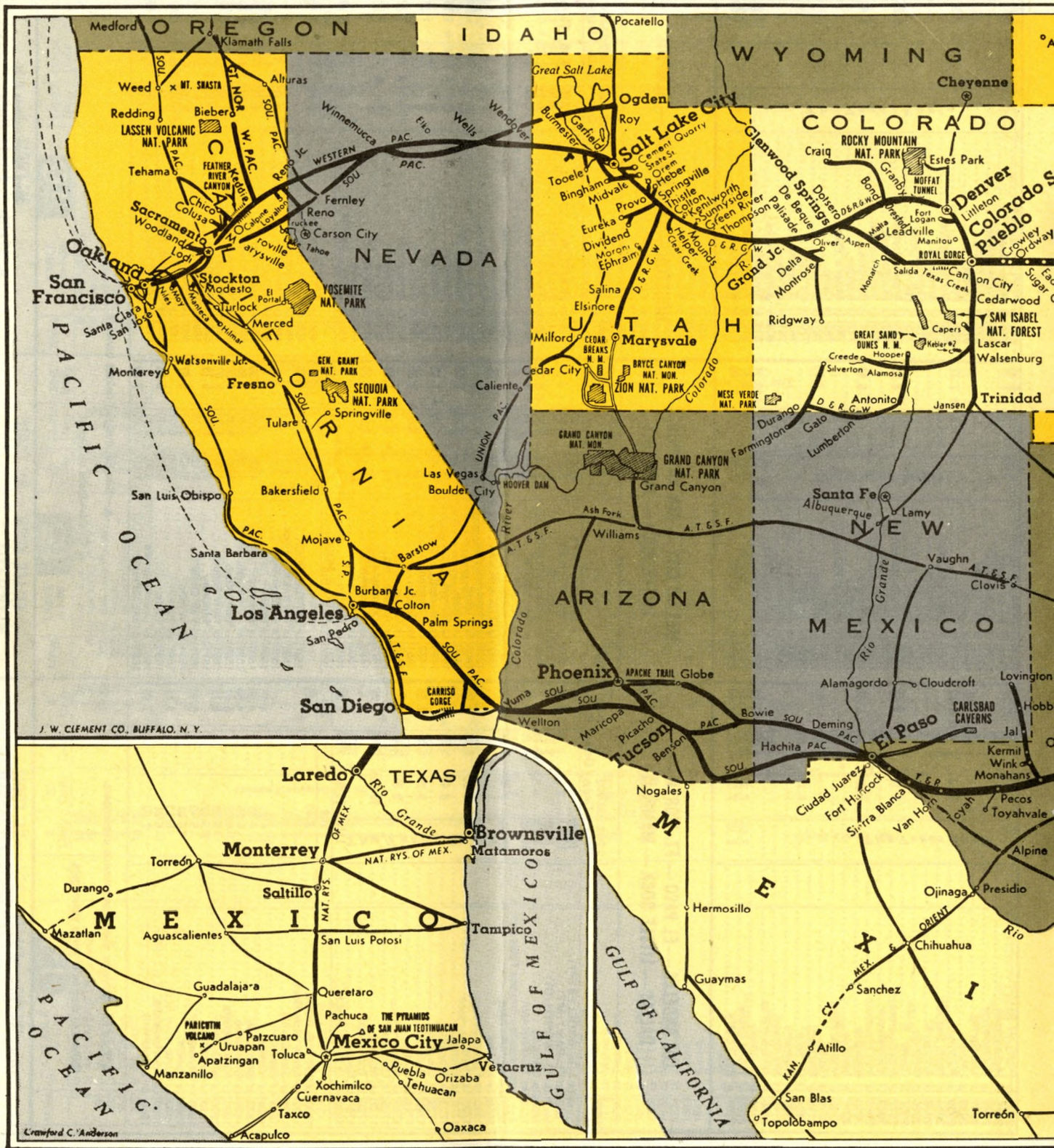
Miles	2-2021 Daily	3-2021 Daily	4 Daily	8-220 Daily	6-45 Daily	4-50 Daily	6-45 Daily	4-50 Daily	6-45 Daily	6-45 Daily
0	Lv LOS ANGELES (PT).....			8.25		1711	Lv POPLAR BLUFF.....	4.50	6.45	6.45
812	Lv EL PASO (MT).....	10.00		3.20		1724	Lv Hendrickson.....			
1427	Lv FT. WORTH (CT).....	12.50		6.30		1731	Lv Williamsville.....			
1459	Lv DALLAS.....	5.05	8.30	7.35		1742	Lv Mill Spring.....			
1676	Lv TEXARKANA.....	6.10	10.15	12.01		1744	Lv Leeper.....			
	For intermediate points see Table above					1750	Lv Piedmont.....			
1676	Lv TEXARKANA.....	10.40	7.45	4.30	12.20	1765	Lv North Des Arc.....	7.32	7.32	7.32
1688	Lv Homan.....			5.10		1769	Lv Annapolis.....			
1695	Lv Fulton.....			5.25		1777	Lv Chloride.....			
1708	Lv Hope.....	8.25	8.43	5.55	1.00	1778	Lv Glover.....			
1716	Lv Emmet.....			5.55	1.15	1784	Lv Arcadia-Ironton.....	8.23	8.23	8.23
1723	Lv Prescott.....			6.11	1.35	1794	Lv Middlebrook.....			
1728	Lv Boughton.....	9.20	9.20	6.40	1.52	1796	Lv Iron Mountain.....			
1740	Lv Gurdon.....			7.05	1.52	1801	Lv Bismarck.....			
1744	Lv Curtis.....			7.50	1.52	1807	Lv Irontdale.....			
1755	Lv Arkadelphia.....	10.05	10.05	7.05	2.20	1816	Lv Mineral Point.....			
1766	Lv Donaldson.....			11.05	2.20	1820	Lv Cadet.....			
1777	Lv Malvern.....				3.20	1835	Lv De Soto.....			
1789	Lv Traskwood.....				3.45	1850	Lv Riverside.....			
1797	Lv Benton.....					1856	Lv Kimmswick.....			
1820	Lv LITTLE ROCK.....	202	11.05	7.50		1867	Lv Jefferson B'ks.....			
						1870	Lv Broadway.....	8.10	10.57	10.57
						1880	Lv Tower Grove.....	8.25	11.00	11.00
							Lv ST. LOUIS.....			
1820	Lv LITTLE ROCK.....	3.40			3.45	1531	Lv LITTLE ROCK.....	3.40	3.45	3.45
1822	Lv North Little Rock.....					1533	Lv North Little Rock.....			
1834	Lv Jacksonville.....					1545	Lv Jacksonville.....			
1853	Lv Beebe.....	4.25			4.35	1564	Lv Beebe.....	4.25	4.35	4.35
1859	Lv Kensett.....	4.35			4.50	1580	Lv Kensett.....	4.25	4.35	4.35
1878	Lv Bald Knob.....	4.35			5.07	1589	Lv Bald Knob.....	4.35	4.35	4.35
1878	Lv Bald Knob.....	4.35			5.19	1589	Lv Bald Knob.....	4.35	4.35	4.35
1880	Lv New Augusta.....	5.06	5.06	5.19		1601	Lv New Augusta.....	5.06	5.06	5.06
1900	Lv McCrory.....	5.17	5.17	5.47		1611	Lv McCrory.....	5.17	5.17	5.17
1910	Lv Fair Oaks.....	6.01	6.01	6.13		1621	Lv Fair Oaks.....	5.42	5.42	5.42
1923	Lv Wynne.....	6.10	6.10	7.00		1634	Lv Wynne.....	6.01	6.01	6.01
1937	Lv Parkin.....	6.21	6.21			1648	Lv Parkin.....	6.10	6.10	6.10
1942	Lv Earle.....	7.00	7.00			1653	Lv Earle.....	6.21	6.21	6.21
1952	Lv Crawfordville.....					1663	Lv Crawfordville.....			
1969	Lv MEMPHIS.....					1680	Lv MEMPHIS.....			

★Stops to receive or discharge revenue passengers.  
 ■Stops to receive revenue passengers.

▲—Bus Service-rail tickets honored.  
 f—Stops on Signal.

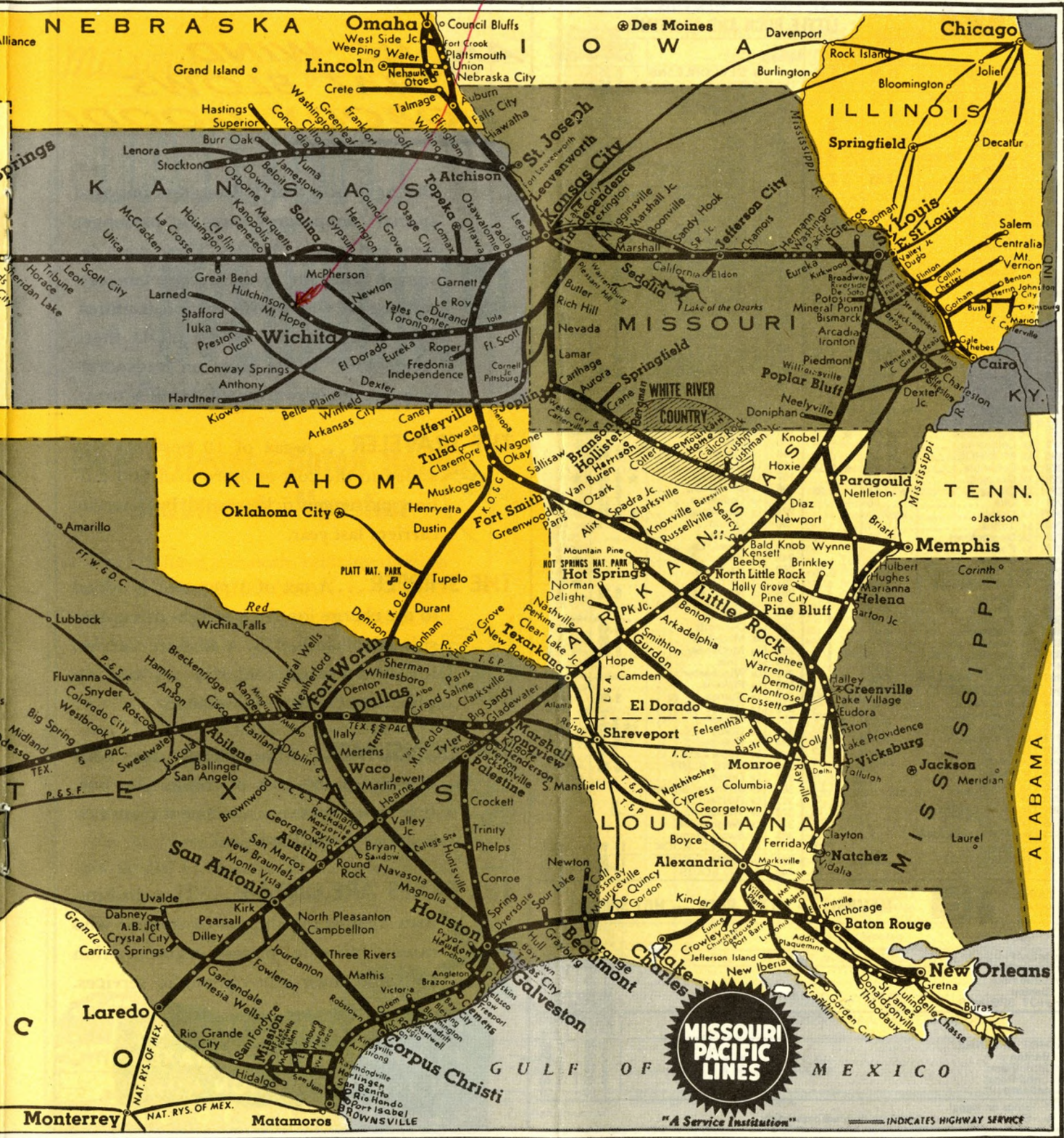
Light figures indicate A. M.

Black figures indicate P. M.



J. W. CLEMENT CO., BUFFALO, N. Y.

Crawford C. Anderson



**MISSOURI PACIFIC LINES**

"A Service Institution"

INDICATES HIGHWAY SERVICE

TABLE  
5-1-58

17

ST. LOUIS — MEMPHIS —  
LITTLE ROCK AND LOUISIANA

Miles		7-103 Daily	1-131 Daily	Miles		132-32 Daily	116-8 Daily
0	Lv ST. LOUIS	11.59	5.50	0	Lv NEW ORLEANS	8.35	
349	Ar LITTLE ROCK	9.45	12.30	194	Ar Kinder	1.55	
0	Lv LITTLE ROCK	5.50	1.30	0	Lv HOUSTON	9.05	
6	Lv Sweet Home			90	Lv BEAUMONT	11.25	
13	Lv Wrightsville			173	Ar Kinder	1.30	
18	Lv Woodson			0	Lv LAKE CHARLES	1.05	
24	Lv Redfield			26	Lv Fenton	f 1.42	
29	Lv Jefferson Springs			36	Ar Kinder	1.55	
34	Lv Dexter			36	Lv Kinder	2.10	
43	Lv PINE BLUFF	6.55	2.40	47	Lv Oberlin	2.23	
53	Lv Noble Lake			61	Lv Oakdale	2.45	
57	Lv Moscow			73	Lv Glenmora	2.50	
65	Lv Grady	7.18		76	Lv Long Leaf	f 0.06	
70	Lv Varner			79	Lv Forest Hill	f 0.11	
75	Lv Gould	7.30		87	Lv Woodworth	f 0.21	
83	Lv Dumas	7.42	★3.26	98	Ar ALEXANDRIA	f 0.45	
86	Lv Pickens			0	Lv NEW ORLEANS		7.50
91	Lv Winchester			11	Lv Avondale		8.40
95	Lv Tillar			64	Lv Donaldsonville		9.35
102	Ar McGehee	8.05	3.50	75	Lv White Castle		9.52
102	Lv McGehee	8.20	4.05	85	Lv Plaquemine		10.05
110	Ar Dermott	8.40	4.19	90	Lv Addis		10.20
119	Lv Jerome			129	Lv Melville		11.45
121	Lv Boydell			163	Lv Bunkie		12.30
126	Lv Montrose	9.10	4.45	194	Ar ALEXANDRIA	4.15	4.30
130	Lv Portland	★9.17		98	Lv ALEXANDRIA		
139	Lv Parkdale	★9.28		110	Lv Simms		
143	Lv Wilmot	9.35		116	Lv Pollock		
151	Lv Jones, La.			136	Lv Georgetown	5.08	5.24
155	Lv Bonita	★9.52		141	Lv Tullos		
161	Lv Gallion	9.59		144	Lv Urania		
167	Lv Mer Rouge	10.10	★5.32	150	Lv Olla		
175	Lv Collinston	10.20	6.39	160	Lv Clarks	5.44	5.59
195	Lv MONROE	11.10	6.30	162	Lv Grayson		
224	Lv Columbia	★11.49	★7.13	167	Lv Columbia	★5.55	★6.10
229	Lv Grayson	★11.56		196	Lv MONROE	6.45	7.10
231	Lv Clarks	★12.01	7.23	216	Lv Collinston	7.15	7.40
241	Lv Olla			224	Lv Mer Rouge	★7.23	7.50
247	Lv Urania			230	Lv Gallion		7.58
250	Lv Tullos			236	Lv Bonita		8.05
255	Lv Georgetown	12.38	7.57	240	Lv Jones, La.		8.10
275	Lv Pollock			248	Lv Wilmot, Ark.		★8.21
281	Lv Simms			252	Lv Parkdale		8.29
293	Ar ALEXANDRIA	1.40	8.55	261	Lv Portland		★8.41
293	Lv ALEXANDRIA	2.00		265	Lv Montrose	8.10	8.46
324	Lv Bunkie	2.40		270	Lv Boydell		8.52
358	Lv Melville			272	Lv Jerome		
397	Lv Addis	3.59		281	Ar Dermott	8.40	9.10
402	Lv Plaquemine	4.08		289	Ar McGehee	8.50	9.30
412	Lv White Castle			289	Lv McGehee	9.00	9.40
423	Lv Donaldsonville	4.33		296	Lv Tillar		
476	Lv Avondale	5.30		300	Lv Winchester		
487	Ar NEW ORLEANS	6.15		305	Lv Pickens		
293	Lv ALEXANDRIA		9.20	308	Lv Dumas	9.24	10.12
304	Lv Woodworth		f 9.40	316	Lv Gould		10.23
312	Lv Forest Hill		f 9.48	321	Lv Varner		
315	Lv Long Leaf		f 9.52	326	Lv Grady		10.37
318	Lv Glenmora		9.57	334	Lv Moscow		
330	Lv Oakdale		10.12	338	Lv Noble Lake		
344	Lv Oberlin		10.31	348	Lv PINE BLUFF	10.15	11.09
355	Ar Kinder		11.01	357	Lv Dexter		★11.22
355	Lv Kinder		11.01	362	Lv Jefferson Springs		
365	Lv Fenton		f 11.12	367	Lv Redfield		
391	Ar LAKE CHARLES		12.15	373	Lv Woodson		
355	Lv Kinder		1.30	378	Lv Wrightsville		
549	Ar NEW ORLEANS		7.15	385	Lv Sweet Home		
355	Lv Kinder		1.55	391	Ar LITTLE ROCK	11.15	12.15
438	Ar BEAUMONT		3.50	391	Lv LITTLE ROCK	11.50	3.35
528	Ar HOUSTON		6.10	740	Ar ST. LOUIS	7.50	11.00

AN ILL WIND  
THAT BLOWS  
NOBODY GOOD!

During World War II Congress imposed special "temporary" taxes on passenger fares and freight charges. These were designed primarily to discourage unnecessary use of vital transportation facilities. Still, being collected FROM YOU these "temporary" excise taxes on transportation are an unwarranted burden to...



**THE TRAVELER**... A tax of 10 per cent was added to the cost of more than 500 million passenger tickets sold by intercity carriers last year.



**THE SHIPPER**... A tax of 3 per cent is added to the charge for every freight or express shipment handled by a for-hire carrier. It's 4¢ a ton on coal, 4½ per cent on pipeline petroleum movements.



**THE CONSUMER**... The freight tax adds directly to the cost of things you buy. It is levied on every movement from raw material to finished product.



**THE TAXES ARE UNFAIR**... They discriminate against the shipper or traveler who cannot provide private transportation and who must rely on public services.



CONGRESS SHOULD BE URGED  
TO REPEAL THE EXCISE TAXES  
ON TRANSPORTATION NOW!

TABLE  
5-1-58

18

## MEMPHIS — LITTLE ROCK — HOT SPRINGS

Lv MEMPHIS	219 Daily	201-831 Daily
Ar Little Rock	8.00	8.30
Lv Little Rock	11.05	11.45
Benton	11.20	2.30
Ar HOT SPRINGS	11.44	3.05
	12.45	4.00
Lv HOT SPRINGS	220 Daily	832-202 Daily
Benton	2.00	8.00
Ar Little Rock	2.45	8.50
Lv Little Rock	3.15	9.25
Ar MEMPHIS	3.45	3.40
	7.00	7.00

f—Stops on signal.

★—Stops to receive or discharge revenue passengers.

Missouri Pacific Offers

DAYLIGHT

and

OVERNIGHT

Service Between

New Orleans—Baton Rouge  
Beaumont—Houston

You can have a smooth, relaxing daylight ride on The ORLEANAN, or a restful, refreshing overnight journey aboard The HOUSTONIAN. Missouri Pacific provides this choice of convenient schedules each way daily between New Orleans and Houston. Whichever you choose you will enjoy the complete comfort of modern, diesel-powered train accommodations. Both trains afford direct connections too—at New Orleans from and to the Southeast, at Houston for Corpus Christi and the Rio Grande Valley.



Light figures indicate A. M.

TABLE  
3-3-57

19

ST. LOUIS — MEMPHIS — AUSTIN  
— SAN ANTONIO — MEXICO

Miles		21 Daily	25-21 Daily	37 Daily	Miles		22 Daily	22-26 Daily	38 Daily
0	Lv ST. LOUIS	5.40	2.00	11.59					
	Lv MEMPHIS	8.30		8.00		N de M			
349	Lv LITTLE ROCK	12.25	9.35	11.25	0	Lv MEXICO CITY	8.20	8.20	
493	Ar TEXARKANA	3.05	12.55	2.30	326	Lv SAN LUIS POTOSI	6.35	6.35	
493	Lv TEXARKANA(T&P)	3.30	1.10	3.35	635	Ar MONTERREY	3.50	3.50	
583	Ar Longview	5.10	3.10	5.45	801	Ar NUEVO LAREDO	8.00	8.00	
	0				0	Lv LAREDO (M. P.)	9.05	9.05	
	0				39	Lv Encinal	9.56	9.56	
	Lv Longview (M. P.)	5.15	3.20	6.05	56	Lv Artesia Wells	11.09	11.09	
12	Lv Kilgore	★5.31	3.40	6.25	67	Lv Cotulla	10.34	10.34	
12	Lv Overton		3.57	6.40	73	Lv Gardendale	11.05	11.05	
29	Lv Arp			6.48	77	Lv Millett			
36	Lv Troup	★6.01	4.18	7.02	84	Lv Dilley	11.09	11.09	
42	Lv Gould				91	Lv Derby	11.20	11.20	
54	Lv Jacksonville	★6.21	4.41	7.24	100	Lv Pearsall	11.34	11.34	
65	Lv Pricas				112	Lv Moore	11.55	11.55	
70	Lv Neches			7.54	121	Lv Devine	12.24	12.24	
81	Ar Palestine	7.00	5.25	8.45	126	Lv Natalia	12.24	12.24	
81	Lv Palestine	7.20	7.20	9.20	131	Lv Lytle	12.55	12.55	
91	Lv Tucker			★9.32	141	Lv Von Ormy	12.54	12.54	
99	Lv Oakwood			9.44	154	Ar SAN ANTONIO	1.30	1.30	
107	Lv Keechi				154	Lv SAN ANTONIO	2.30	2.30	8.15
118	Lv Buffalo			10.10	157	Lv Monte Vista	2.36	2.36	8.23
125	Lv Jewett	★8.08	★8.08	10.25	165	Lv Wetmore			8.34
136	Lv Marquez			10.40	185	Lv New Braunfels	★3.07	★3.07	9.02
145	Lv Ridge			11.01	196	Lv Hunter			★9.16
150	Lv Easterly			11.08	203	Lv San Marcos	★3.24	★3.24	9.30
154	Lv New Baden			11.05	212	Lv Kyle			9.44
158	Lv Franklin	★8.44	★8.44	11.13	218	Lv Buda			9.55
171	Lv Hearne	9.00	9.00	11.35	223	Lv Manchaca			11.00
175	Lv Valley Jct.			11.40	233	Ar AUSTIN	3.59	3.59	10.35
181	Lv Gause			11.46	233	Lv AUSTIN	3.59	3.59	10.35
191	Lv Milano	9.25	9.25	12.06	246	Lv McNeil			
200	Lv Rockdale	9.38	9.38	12.36	251	Lv Round Rock			11.07
214	Lv Thorndale			12.58	259	Lv Hutto			11.20
220	Lv Thrall			1.18	268	Lv Taylor			11.45
226	Lv Taylor	10.13	10.13	2.00	274	Lv Thrall	4.40	4.40	12.01
235	Lv Hutto			2.17	280	Lv Thorndale			12.15
243	Lv Round Rock			2.32	294	Lv Rockdale	★5.05	★5.05	12.36
248	Lv McNeil			2.44	303	Lv Milano	★5.14	★5.14	12.47
261	Ar AUSTIN	10.53	10.53	3.27	313	Lv Gause			1.09
271	Lv Manchaca			3.45	319	Lv Valley Jct.			1.25
276	Lv Buda			3.53	323	Lv Hearne	★5.36	★5.36	1.52
282	Lv Kyle			4.03	336	Lv Franklin	★5.49	★5.49	2.12
291	Lv San Marcos	11.30	11.30	4.23	340	Lv New Baden			2.20
298	Lv Hunter			★4.32	344	Lv Easterly			2.30
309	Lv New Braunfels	11.50	11.50	4.46	349	Lv Ridge			2.40
329	Lv Wetmore			5.14	358	Lv Marquez			2.55
337	Lv Monte Vista	12.26	12.26	5.26	369	Lv Jewett	★6.21	★6.21	3.15
340	Ar SAN ANTONIO	12.40	12.40	5.45	376	Lv Buffalo			3.32
340	Lv SAN ANTONIO	1.00	1.00		387	Lv Keechi			
353	Lv Von Ormy	f 1.22	f 1.22		395	Lv Oakwood			4.02
363	Lv Lytle	f 1.36	f 1.36		403	Lv Tucker			★4.18
368	Lv Natalia	f 1.42	f 1.42		413	Ar Palestine	7.15	7.15	4.40
373	Lv Devine	f 1.49	f 1.49		413	Lv Palestine	7.40	8.10	5.30
382	Lv Moore	f 2.01	f 2.01		424	Lv Neches			f 5.45
394	Lv Pearsall	f 2.19	f 2.19		429	Lv Pricas			
403	Lv Derby	f 2.31	f 2.31		440	Lv Jacksonville	★8.13	8.49	6.21
410	Lv Dilley	2.41	2.41		452	Lv Gould			
417	Lv Millett				458	Lv Troup	★8.34	9.15	6.57
421	Lv Gardendale	f 2.55	f 2.55		465	Lv Arp			7.08
427	Lv Cotulla	3.04	3.04		472	Lv Overton		9.35	7.20
438	Lv Artesia Wells	f 3.19	f 3.19		482	Lv Kilgore	★9.01	9.52	7.37
455	Lv Encinal	3.42	3.42		494	Ar Longview	9.25	10.35	8.10
494	Ar LAREDO	4.40	4.40		494	Lv Longview (T&P)	9.30	10.45	8.30
					584	Ar TEXARKANA	11.05	12.30	11.30
	N de M				584	Ar TEXARKANA	11.15	12.45	12.20
496	Lv NUEVO LAREDO	6.00	6.00		728	Ar LITTLE ROCK	1.45	3.25	3.20
652	Ar MONTERREY	10.15	10.15						
973	Ar SAN LUIS POTOSI	8.55	8.55		877	Ar MEMPHIS	7.00	7.00	7.00
1297	Ar MEXICO CITY	8.00	8.00		1077	Ar ST. LOUIS	8.25		11.00

TABLE

20

TROUP — TYLER

VIA OILFIELD COACHES — RAIL TICKETS HONORED

Lv TROUP	6.10	8.45	Lv TYLER	5.05	7.25
Ar TYLER	6.50	9.25	Ar TROUP	5.45	8.05

★—stops to receive or discharge revenue passengers.  
f—stops on signal.

TABLE 8-19-56

**21**

**ST. LOUIS — MEMPHIS — HOUSTON — CORPUS CHRISTI — HARLINGEN — BROWNSVILLE**

Miles		21-201 121-321 Daily	315 Daily	Miles		322 122-22- 202 Daily	316 Daily
0	Lv ST. LOUIS	5.40		0	Lv BROWNSVILLE	7.00	8.45
	Lv MEMPHIS	8.30		9	Lv Olmito		
816	Ar HOUSTON	10.40		19	Lv San Benito	7.26	9.12
0	Lv HOUSTON	11.30	9.40	24	Ar HARLINGEN	7.45	9.25
28	Lv Algoa	12.08	10.30	24	Lv HARLINGEN	7.45	9.45
38	Lv Liverpool			30	Lv Combes		
44	Lv Danbury	12.23		30	Lv Sebastian		
51	Lv Angleton	12.33	10.55	41	Lv Lyford		
55	Lv Edmonds			46	Lv Raymondville	8.13	10.21
63	Lv Brazoria	12.45	11.12	67	Lv Rudolph		
71	Lv Sweeney	12.56	11.24	77	Lv Norias		
80	Lv Allenhurst			77	Lv Armstrong	8.47	11.02
88	Lv Bay City	1.20	11.50	97	Lv Sarita	9.11	
95	Lv Buckeye			102	Lv Riviera		
102	Lv Elmaton			111	Lv Ricardo		
107	Lv Blessing	1.47	12.14	118	Ar Kingsville	9.35	11.59
114	Lv Francitas			118	Lv Bishop	9.40	12.10
122	Lv Laward	2.04		124	Lv Driscoll	9.50	12.20
127	Lv Lolita			131	Lv Robstown		
131	Lv Vanderbilt	2.16	12.45	141	Lv Calallen	10.12	12.50
136	Lv LaSalle			148	Lv Calallen		
147	Lv Placedo	2.36		154	Ar ODEM	10.35	1.10
152	Lv Bloomington	2.44	1.14	0	Lv CORP. CHRISTI	10.05	
162	Lv McFaddin	2.56		17	Ar ODEM	10.30	
166	Lv Inari			154	Lv ODEM	10.45	1.30
173	Lv Vidauri			162	Lv Sinton	10.57	1.52
178	Lv Greta			168	Lv Ewelder		
186	Lv Refugio	3.28	1.59	173	Lv Cranell		
192	Lv Woodsboro	3.36	2.07	179	Lv Woodsboro	11.18	2.25
198	Lv Cranell			185	Lv Refugio	11.27	2.37
203	Lv Ewelder			193	Lv Greta		
209	Lv Sinton	3.59	2.35	198	Lv Vidauri		
217	Ar ODEM	4.20	2.45	205	Lv Inari		
217	Lv ODEM	4.35		209	Lv McFaddin	11.53	
234	Ar CORP. CHRISTI	5.15		219	Lv Bloomington	12.04	3.22
217	Lv ODEM	4.30	3.05	224	Lv Placedo	12.10	
223	Lv Calallen			235	Lv LaSalle		
230	Lv Robstown	4.50	3.35	240	Lv Vanderbilt	12.27	3.50
240	Lv Driscoll			244	Lv Lolita		
247	Lv Bishop	5.09	3.55	249	Lv Laward	12.39	
253	Ar Kingsville	5.20	4.10	257	Lv Francitas		
253	Lv Kingsville	5.25	4.20	264	Lv Blessing	12.56	
260	Lv Ricardo			269	Lv Elmaton		
269	Lv Riviera			275	Lv Buckeye		
274	Lv Sarita	5.52		283	Lv Bay City	1.25	5.00
294	Lv Armstrong	6.14	5.17	291	Lv Allenhurst		
304	Lv Norias			300	Lv Sweeny	1.43	5.22
311	Lv Rudolph			308	Lv Brazoria	1.55	5.35
325	Lv Raymondville	6.50	6.00	316	Lv Edmonds		
330	Lv Lyford		6.07	320	Lv Angleton	2.08	5.55
335	Lv Sebastian			327	Lv Danbury	2.18	6.04
341	Lv Combes			333	Lv Liverpool		
347	Ar HARLINGEN	7.35	6.30	343	Lv Algoa	2.35	6.30
347	Lv HARLINGEN	7.35	6.50	371	Ar HOUSTON	3.25	7.30
352	Lv San Benito	7.50	7.11	371	Lv HOUSTON	4.15	
362	Lv Olmito			987	Ar MEMPHIS	7.00	
371	Ar BROWNSVILLE	8.25	7.55	1187	Ar ST. LOUIS	8.25	

The Valley Eagle Streamlined train

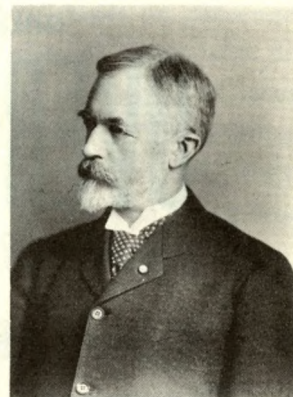
The Valley Eagle Streamlined train

**75 Years of Standard Time Began With**

**"The Day of Two Noons"**

LACK OF a uniform policy in the adoption of daylight saving time often compels present day travelers to wonder "What time is it here"? If this seems confusing, try to imagine the situation that prevailed prior to the adoption on November 12, 1883, of the Standard Time system throughout the United States.

Up until 75 years ago there were, for illustration, 27 varying local times in Michigan, 38 in Wisconsin, 27 in Illinois and 23 in Indiana. It has been estimated that a few years prior to 1883 something like 100 different times were in use by the railroads of this country.



WILLIAM F. ALLEN

Logically, it was a railway organization, the General Time Convention, that effected adoption of a Standard Time System. This group, organized in 1872, spearheaded efforts to end the confusion and at a meeting in Chicago on October 11, 1883, formally adopted Standard Time for all United States railroads.

William F. Allen, long time secretary of the organization, devised the system that divides the country into four times zones based upon mean sun time on the 75th, 90th, 105th and 120th meridians west of Greenwich. It was he who issued the Convention's notice directing that all railway clocks governing the operation of trains throughout the United States be set to the new standard at exactly 12:00 noon, Sunday, November 18, 1883.

The time change date was called "the day of two noons" because in the eastern part of each time zone there was a sun-time noon after which clocks were turned back from one to thirty minutes. There was a second noon when these clocks reached the new Standard Time 12:00 o'clock figure.

Although some objected violently at first, the American people soon accepted Standard Time without question. It has since spread to other lands and today is in almost universal use. Oddly enough it was put into effect without federal legislation and thus had no legal status for 35 years although used by the Federal Government and states, cities and towns throughout the country. The Standard Time Act was not passed by Congress until March 19, 1918.

TABLE 5-1-58

**22**

**ST. LOUIS — MEMPHIS — EL DORADO**

Miles		1-31- 821 Daily	Miles		822- 32 Daily
	Lv ST. LOUIS	5.50	0	Lv EL DORADO	6.30
	Ar LITTLE ROCK	12.30	9	Lv Norphlet	6.43
	Lv MEMPHIS	8.30	14	Lv Smackover	6.57
	Ar LITTLE ROCK	11.45	19	Lv Louann	7.04
	Lv LITTLE ROCK	12.55	33	Lv Camden	7.32
	Ar Gurdon	2.40	41	Lv Lester	7.48
0	Lv Gurdon	5.15	48	Lv Chidester	8.05
7	Lv Whelen Springs	5.27	55	Lv Reader	8.18
12	Lv Reader	5.35	60	Lv Whelen Springs	8.26
19	Lv Chidester	5.47	67	Ar Gurdon	8.45
26	Lv Lester	5.59	67	Lv Gurdon	9.20
34	Lv Camden	6.20	148	Ar LITTLE ROCK	11.05
48	Lv Louann	6.43	148	Lv LITTLE ROCK	3.40
53	Lv Smackover	6.55	297	Ar MEMPHIS	7.00
58	Lv Norphlet	7.05	148	Lv LITTLE ROCK	11.50
67	Ar EL DORADO	7.30	497	Ar ST. LOUIS	7.50

f—stops on signal. ★—stops to receive or discharge revenue passengers.



TABLE 23  
12-22-57

NEW ORLEANS — BEAUMONT — HOUSTON —  
RIO GRANDE VALLEY

Miles		303-315 Daily	309-321 Daily	Miles		322-310 Daily	316-304 Daily
0	Lv NEW ORLEANS (Union Station)	8.35	10.10	0	Lv BROWNSVILLE	7.00	8.45
4	Lv (Carrollton Ave.)	8.45	10.20	25	Lv HARLINGEN	7.45	9.45
38	Lv Garyville	9.28	11.03	137	Lv CORPUS CHRISTI	10.05	
43	Lv Lutchter	9.34	11.09	372	Ar HOUSTON	3.25	7.30
51	Lv Convent	9.43	11.18	0	Lv HOUSTON	9.35	9.05
62	Lv Burnside	9.56	11.31	13	Lv Dyersdale		
90	Lv BATON ROUGE	10.45	12.20	21	Lv Harmaston		
95	Lv Anchorage	11.22	12.53	27	Lv Huffman		f 9.47
99	Lv Westover			31	Lv Eastgate		
107	Lv Erwinville	f 11.34		42	Lv Kenefick		
117	Lv Livonia	f 11.46		50	Lv Hardin		f 10.14
122	Lv Lottie	11.53	★ 1.20	55	Lv Hull	★ 10.48	10.20
129	Lv Krotz Springs	12.07		61	Lv Strain		
141	Lv Port Barre	12.22	f 1.46	69	Lv Grayburg	★ 11.02	10.40
148	Lv Opelousas	12.32	1.55	76	Lv Westbury		
155	Lv Lawtell			89	Ar BEAUMONT	11.35	11.15
159	Lv Eunice	1.06	★ 2.52	89	Lv Mauriceville	11.45	11.25
179	Lv Basile	1.20	★ 3.07	106	Lv De Quincy	f 12.05	11.45
185	Lv Elton	1.28	★ 3.14	136	Lv Ragley	12.50	12.30
195	Ar Kinder	1.55	★ 3.35	148	Lv Reaves		★ 1.02
201	Lv Le Blanc	1.55	3.35	166	Lv Le Blanc		
207	Lv Reaves	★ 2.12		172	Ar Kinder	1.31	1.30
219	Lv Ragley			182	Ar Elton	★ 1.50	1.50
231	Lv DeQuincy	f 2.50	4.30	188	Lv Basile	★ 1.56	1.58
261	Lv Mauriceville	3.25	f 5.05	198	Lv Eunice	2.15	2.26
278	Ar BEAUMONT	3.50	5.30	212	Lv Lawtell		
278	Lv BEAUMONT	4.00	5.40	219	Lv Opelousas	2.45	3.03
291	Lv Westbury			226	Lv Port Barre		3.13
298	Lv Grayburg	4.34	★ 6.14	238	Lv Krotz Springs		3.31
306	Lv Strain			245	Lv Lottie	★ 3.18	3.48
312	Lv Hull	4.50	★ 6.28	250	Lv Livonia		f 3.56
317	Lv Hardin	f 4.58		260	Lv Erwinville		f 4.09
325	Lv Kenefick			268	Lv Westover		
336	Lv Eastgate			272	Lv Anchorage	3.47	4.25
340	Lv Huffman	f 5.24		277	Ar BATON ROUGE	4.20	5.00
346	Lv Harmaston			305	Ar Burnside	5.03	5.43
354	Lv Dyersdale			316	Ar Convent	5.14	5.54
367	Ar HOUSTON	6.10	7.50	324	Ar Lutchter	5.22	6.02
367	Lv HOUSTON	9.40	11.30	329	Ar Garyville	5.28	6.08
602	Ar CORPUS CHRISTI		5.15	363	Ar (Carrollton Ave.)	6.26	6.57
714	Ar HARLINGEN	6.30	7.35	367	Ar NEW ORLEANS (Union Station)	6.40	7.15
739	Ar BROWNSVILLE	7.55	8.25				

TABLE 24  
12-22-57

HOUSTON — BAYTOWN

Lv. Houston (MK Yard) 4.15 p. m., daily.  
Lv. Baytown 3.00 p. m., daily.  
Running time between Houston (MK Yard) and Baytown 1 hr. 5 min.

TABLE 25  
5-1-58

HELENA — McGEHEE

Miles		335 Daily	Miles		334 Daily
0	Lv HELENA	5.40	0	Lv McGEHEE	9.30
13	Lv Lexa	6.01	6	Lv McArthur	f 9.37
23	Lv Oneida	6.23	21	Lv Watson	9.58
35	Lv Elaine	6.42	27	Lv Medina	f 10.07
44	Lv Mellwood	6.56	30	Lv Benzal	f
58	Lv Snow Lake	7.14	33	Lv Mozart	f 10.17
64	Lv Mozart	f 7.24	39	Lv Snow Lake	10.26
67	Lv Benzal	f	53	Lv Mellwood	10.44
70	Lv Medina	f 7.32	62	Lv Elaine	10.56
76	Lv Watson	f 7.46	74	Lv Oneida	11.11
91	Lv McArthur	f 8.07	84	Lv Lexa	11.33
97	Ar McGehee	8.20	97	Ar HELENA	11.59

f—Stops on signal.  
★—Stops to receive or discharge revenue passengers.  
⌈—Stops for revenue passengers to or from Opelousas and points beyond.

**NOW!**

**EVERY DAY**

**MO-PAC'S FAMILY FARE PLAN**

**CUTS THE COST OF FAMILY TRIPS**

Take advantage of this money-saving plan and enjoy the extra air-conditioned comfort, the convenience, safety and dependability of train travel at a greatly reduced cost. On the Missouri Pacific you may start your trip any day of the week...return any day, and stop over wherever and as often as you like.

**Look at the savings that can be made:**

**ROUND TRIP COACH FARES (Including 10% Federal Tax)**

	REGULAR FARE	FAMILY FARE	SAVINGS
Memphis, Tenn. to Los Angeles, Calif. . . . .	\$379.44	\$254.71	\$124.73
Omaha, Nebr. to St. Louis, Mo. . . . .	80.29	54.84	25.45
St. Louis, Mo. to San Antonio, Texas. . . . .	183.47	125.29	58.18
San Antonio, Texas to Memphis, Tenn. . . . .	146.90	100.27	46.63
Dallas, Texas to Chicago, Ill. . . . .	182.32	124.41	57.91
Ft. Worth, Texas to St. Louis, Mo. . . . .	129.96	88.72	41.24
Houston, Texas to St. Louis, Mo. . . . .	171.71	117.26	54.45
Kansas City, Mo. to Denver, Colo. . . . .	120.89	82.56	38.33
Little Rock, Ark. to El Paso, Texas. . . . .	205.03	139.98	65.05
New Orleans, La. to San Francisco, Calif. . . . .	379.44	276.60	102.84
Wichita, Kans. to Colorado Springs, Colo. . . . .	92.02	62.87	29.15

**EXAMPLES SHOWN are for a family of four, including father, mother and two children—one 12 to 21 years old, one 5 to 11 years old.**



## CONNECTIONS FROM KANSAS CITY

Frisco				Burlington Route			
Lv Kansas City	11.05	8.15		Lv Kansas City	4.00	4.00	
Ar Tulsa	7.00	2.10		Ar Billings	7.15	7.15	
Ar Okla. City		10.15		Ar Spokane	8.00	8.45	
<b>Kansas City Southern</b>				<b>G. M. &amp; O.</b>			
Lv Kansas City	10.00	9.30		Lv Kansas City	7.15		
Ar Texarkana	8.45	9.55		Lv Bloomington	7.25		
Ar Shreveport	10.30	11.55		Ar Tacoma	9.40		
Ar Port Arthur		6.25		<b>Union Pacific</b>			
<b>Union Pacific</b>				<b>M.-K.-T.</b>			
Lv Kansas City	8.30			Lv Kansas City	9.00	9.40	
Ar Pocatello	9.30			Ar Dallas	9.55	8.29	
Ar Portland	5.30			Ar Fort Worth	9.50	8.50	
Ar Tacoma	12.01			Ar Austin	3.45	1.20	
Ar Seattle	1.00			Ar San Antonio	6.20	3.15	
<b>Rock Island</b>				<b>Chicago Gt. Western</b>			
Lv Kansas City	1.25	9.30	9.30	Lv Kansas City	5.15	11.30	
Ar Rock Island	7.35	3.55	9.20	Ar Des Moines	5.15		
Ar Chicago	11.00	7.50		Ar St. Paul	4.15		
Ar Des Moines		1.40	1.35	Ar Minneapolis	4.50		
Ar St. Paul		6.35	8.00	<b>Santa Fe</b>			
Ar Minneapolis		7.20	8.45	Lv Kansas City	2.15	9.30	4.55
Lv Kansas City	10.20	8.35		Ar Tulsa			8.30
Ar El Paso	2.45	6.30		Ar Okla. City			8.55
Ar Los Angeles	7.30	6.30		Ar Albuquerque	4.45	4.35	7.30

## CONNECTIONS FROM OMAHA

Chicago & North Western				C. G. W.				Rock Island				
Lv Omaha		10.00	7.45	10.30	Lv Omaha	8.45		11.41	11.15			
Ar Sioux City				11.40	Ar Fort Dodge	12.30		2.15	1.30	8.15		
Ar Rochester				7.57	Ar Mason City	2.55		5.05	4.41	12.30		
Ar St. Paul				6.15	Ar St. Paul	7.00		5.26	5.10	12.45		
Ar Minneapolis				6.50	Ar Minneapolis	7.35		5.32	5.16			
Ar Cedar Rapids		4.00	1.40		<b>CONNECTIONS TO OMAHA</b>				<b>Chicago &amp; North Western</b>			
Ar Clinton		5.20	3.30		Lv Clinton		12.50	12.50				

## CONNECTIONS FROM NEW ORLEANS

Louisville & Nashville				Illinois Central				Southern Ry.					
Lv New Orleans	7.55	10.25	5.30	9.00	9.00	Lv New Orleans	7.15	11.45	4.15	8.45			
Ar Mobile	11.35	1.25	8.55	12.35	12.35	Ar Jackson	10.15	3.10	7.15	1.10			
Ar Pensacola	4.25	4.25	12.30	5.50	5.30	Ar Memphis	1.45	6.45	10.50	6.30			
Ar Jacksonville (ET) (SAL)			9.05	5.45	5.45	Ar Fulton	4.10	10.05	1.15	9.30			
Ar Montgomery	4.35	5.10	1.50	5.30	5.30	<b>Southern Ry.</b>				<b>Louisville &amp; Nashville</b>			
Ar Atlanta (ET)	11.25		7.50	1.15	1.15	Lv Cincinnati (ET)		9.00	7.05				
Ar Washington	5.15		1.15	4.20	4.20	Lv Louisville (CT)		11.25	9.20				
Ar Baltimore	6.41		2.60	5.30	5.30	Lv Nashville		3.40	2.05				
Ar North Philadelphia	8.27		4.51	7.29	7.29	Lv Birmingham		8.20	6.15				
Ar New York	10.15		6.25	9.05	9.05	Ar Montgomery		10.20	8.15				
Lv Montgomery	4.55	5.30		5.50	5.50	Lv New York (ET)			9.20	9.30	2.00		
Ar Birmingham	7.40	7.20		7.55	7.55	Lv North Philadelphia			10.54	11.00	3.29		
Ar Nashville	2.10	11.25		12.30	12.30	Lv Baltimore			1.15	11.00	5.15		
Ar Louisville	7.25	3.40		9.30	9.30	Lv Washington			3.00	12.40	6.29		
Ar Cincinnati (ET)	12.40	8.00				Lv Atlanta			7.15	6.50	8.35		

## CONNECTIONS TO KANSAS CITY

Frisco				Burlington Route			
Lv Oklahoma City		6.45		Lv Seattle	1.30	9.35	
Lv Tulsa	2.25	11.00		Lv Tacoma	1.15	9.10	
Ar Kansas City	8.25	7.00		Lv Portland	3.00	9.45	
<b>Kansas City Southern</b>				<b>G. M. &amp; O.</b>			
Lv Port Arthur		11.00		Lv Chicago		11.25	
Lv Shreveport		5.20		Lv Bloomington		8.00	
Lv Texarkana	9.00	7.25		Ar Kansas City		7.55	
Ar Kansas City	7.45	7.20		<b>Union Pacific</b>			
<b>Union Pacific</b>				<b>M.-K.-T. R. R.</b>			
Lv Seattle	5.00			Lv San Antonio	10.10	11.01	
Lv Tacoma	6.02			Lv Austin	12.15	12.36	
Lv Portland	9.30			Lv Waco	3.40	3.15	
Lv Pocatello	6.15			Lv Fort Worth	7.00	5.15	
Ar Kansas City	10.30			Lv Dallas	6.55	5.35	
<b>Rock Island</b>				<b>C. G. W.</b>			
Lv Los Angeles	1.20	10.00		Lv Minneapolis		10.00	
Lv El Paso	7.55	11.05		Lv St. Paul		10.30	
Ar Kansas City	1.00	8.40		Lv Des Moines		7.35	
Lv Minneapolis		11.45	8.25	Ar Kansas City		1.45	
Lv St. Paul		12.15	9.05	<b>Santa Fe</b>			
Lv Des Moines		5.02	2.55	Lv Los Angeles		8.00	1.00
Lv Chicago	1.10	9.00		Lv Gr. Canyon			
Lv Rock Island	4.05	12.35		Lv Williams			2.35
Ar Kansas City	9.50	7.30	9.30	Lv Albuquerque	1.25	6.25	10.00

## CONNECTIONS TO NEW ORLEANS

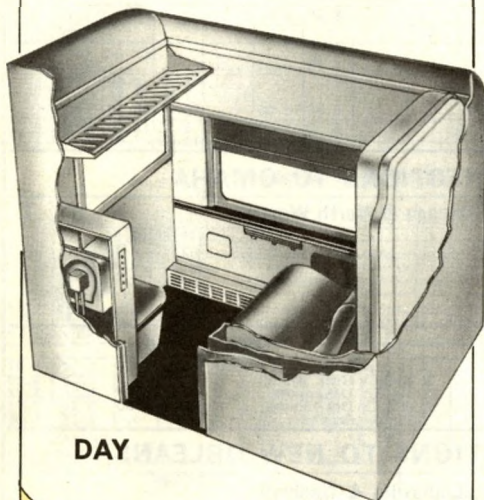
Louisville & Nashville				Illinois Central				Southern Ry.			
Lv Cincinnati (ET)		9.00	7.05			Lv Cincinnati (ET)	8.45	9.15	9.15		
Lv Louisville (CT)		11.25	9.20			Lv Chattanooga (ET)	6.00	7.40	7.40		
Lv Nashville		3.40	2.05			Ar Birmingham	8.30	9.45	9.45		
Lv Birmingham		8.20	6.15			Lv New York (PRR) (ET)	6.30	11.30	4.35		
Ar Montgomery		10.20	8.15			Lv Philadelphia (30th St.)	8.25	1.05	6.12		
Lv New York (ET)			9.20	9.30	2.00	Lv Baltimore (PRR)	10.10	2.25	7.33		
Lv North Philadelphia			10.54	11.00	3.29	Lv Washington	11.45	3.50	8.30		
Lv Baltimore			1.15	12.40	6.29	Lv Roanoke (N&W)	5.45	9.16			
Lv Washington			3.00	12.40	6.29	Lv Knoxville	2.10	4.25			
Lv Atlanta			7.15	6.50	8.35	Lv Chattanooga (ET)	6.00	7.40			
Lv Montgomery (CT)		11.30	8.30	11.30	12.15	Ar Birmingham (CT)	8.30	9.45			
Lv Jacksonville (ET) (SAL)		5.05				Lv Birmingham	9.00	1.15	1.15		
Lv Pensacola		12.40				Ar New Orleans	6.35	8.50	8.50		
Lv Mobile		4.20	12.05	4.20	3.55						
Ar New Orleans		8.20	3.30	8.20	7.25						

# The Missouri Pacific Lines Offer You...

These Accommodations Are Available in 14 Roomette, 4 Double Bedroom Cars; 10 Roomette, 6 Double Bedroom; 14 Roomette, 2 Double Bedroom, 1 Drawing Room Cars, and in 5 Double Bedroom-Lounge Cars

## THE ROOMETTE

An increasingly popular accommodation for the individual traveler. Provides a completely enclosed room with private toilet facilities, washstand, wardrobe locker. Other convenience and comfort features include circulating ice water, thermostatic air-conditioning and heat controls, full length mirror, electric razor outlet, shoe locker and spacious luggage rack.



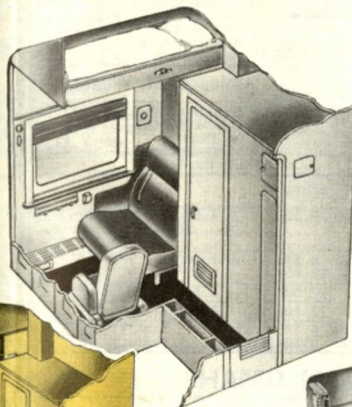
DAY



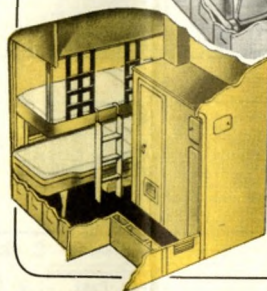
NIGHT

## THE BEDROOM

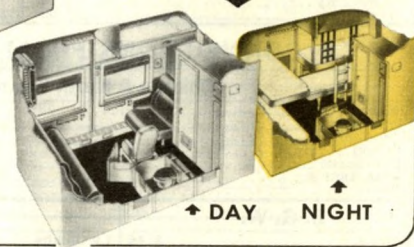
DAY



THE DOUBLE BEDROOM for one or two persons provides lower and upper bed, enclosed toilet and lavatory facilities, separate air-conditioning and temperature controls, running ice water, wardrobe locker, full length mirror, electric razor outlet, shoe locker and ample luggage space. Opening the partition between two adjoining double bedrooms forms the **BEDROOM SUITE** illustrated below, providing the facilities of two double bedrooms with two lower and two upper beds, two enclosed toilets, etc.



NIGHT



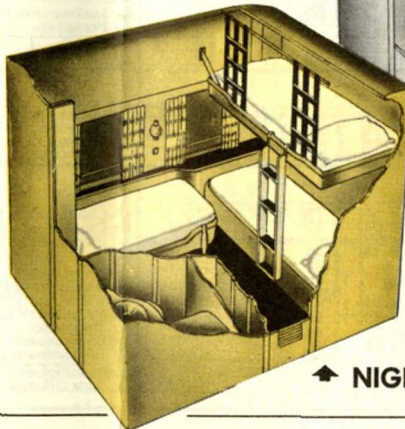
DAY

NIGHT

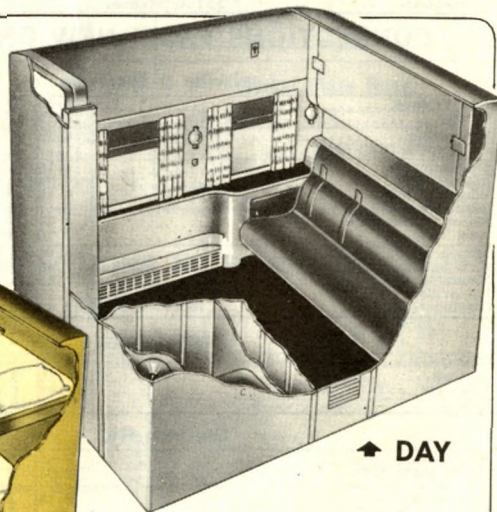
## THE BEDROOM SUITE

## THE DRAWING ROOM

A spacious and luxurious living room during daylight hours with two full length beds and upper berth for sleeping accommodations at night. The private lavatory and toilet facilities are completely enclosed. These new type drawing rooms also provide fan; circulating ice water;



NIGHT



DAY

individually controlled light, ventilation, air-conditioning and heat; shoe locker; a large wardrobe and ample storage space for luggage.

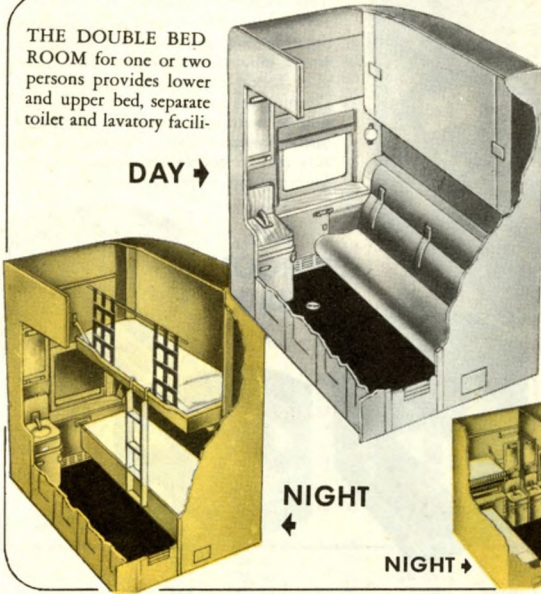
# ... A Selection of Pullman Accommodations

The Accommodations Illustrated Below Are Provided in 6-Section,  
6 Roomette, 4 Double Bedroom Cars

## THE BEDROOM

THE DOUBLE BED ROOM for one or two persons provides lower and upper bed, separate toilet and lavatory facilities.

DAY →

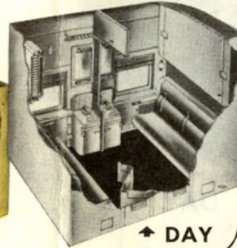


NIGHT  
←

NIGHT →

ties, air-conditioning and temperature controls, full length mirror, clothes locker, razor outlet, shoe locker and ample luggage space. Opening the partition between adjoining double bedrooms forms the **BEDROOM SUITE** illustrated below, providing the facilities of two double bedrooms with two lower and two upper beds, two toilets, etc.

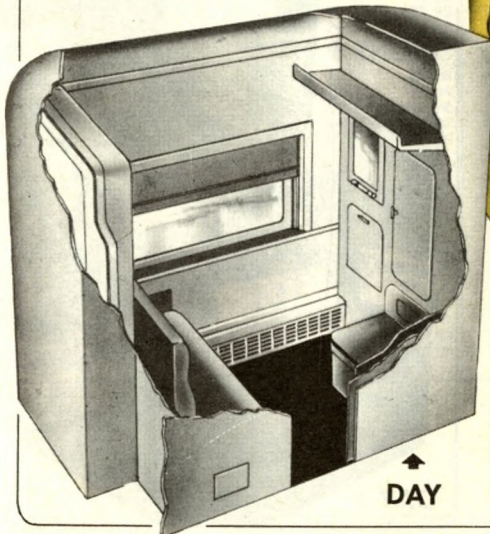
## THE BEDROOM SUITE



↑ DAY

## THE ROOMETTE

A private, completely enclosed room designed for the individual traveler. Contains a pre-made bed that folds into the wall. Also provides private toilet facilities, washstand, mirrored



↑ DAY

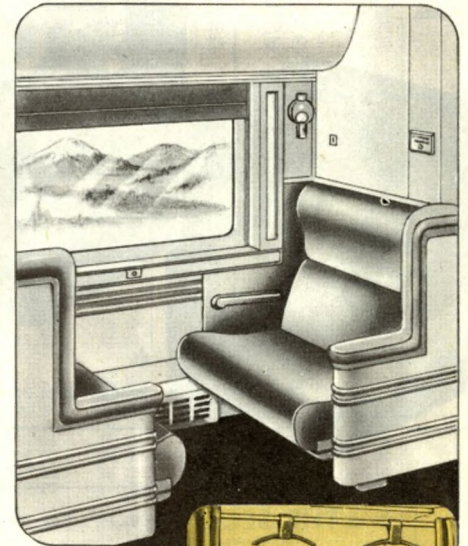


↑ NIGHT

cabinet for toilet articles, clothes locker, shoe locker, ample luggage space and individually controlled ventilation, air-conditioning, heat and light.

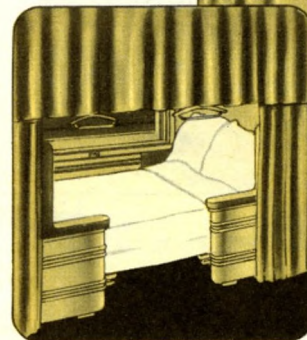
## THE SECTION

Combines lower and upper berths, each a sleep-inviting bed with convenient lights, clothes hangers, shelf or hammock for sundry articles, and a bell to summon the porter at any hour. For daytime travel the section provides a pair of roomy, soft-cushioned lounge seats.



DAY →

UPPER →  
AT NIGHT



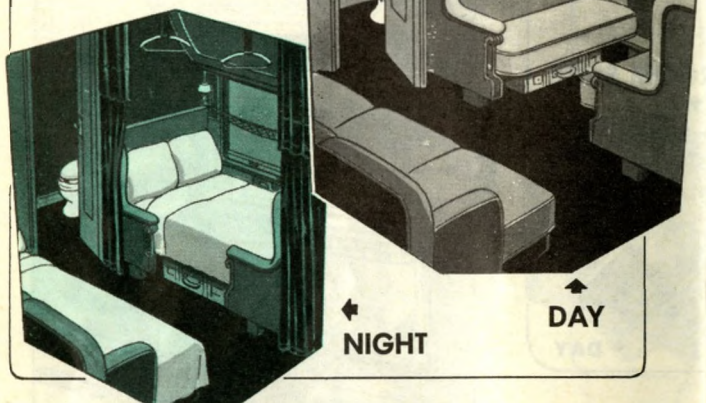
LOWER  
AT NIGHT  
←

# The Missouri Pacific Lines Offer You A Selection of Pullman Accommodations

## On Trains Other Than The Streamlined Eagles

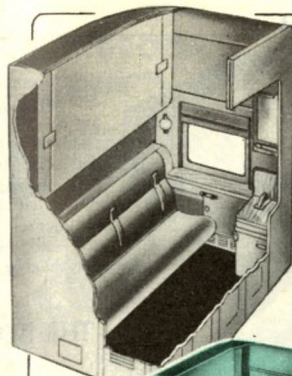
### THE DRAWING ROOM

The ideal accommodation for family groups. A spacious private living room by day, at night it provides two beds and an easily accessible upper berth. Toilet and lavatory are enclosed and completely private.



### THE BEDROOM

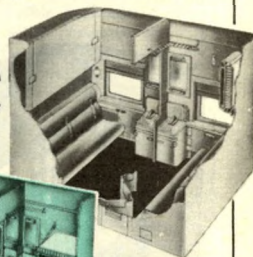
THE DOUBLE BEDROOM for one or two persons provides lower and upper bed, separate toilet and lavatory facilities, full length mirror, clothes locker, razor outlet, shoe locker and ample luggage space. Opening the partition between adjoining double bedrooms forms the **BEDROOM SUITE** illustrated below, providing the facilities of two double bedrooms with two lower and two upper beds, two toilets, etc.



DAY

NIGHT

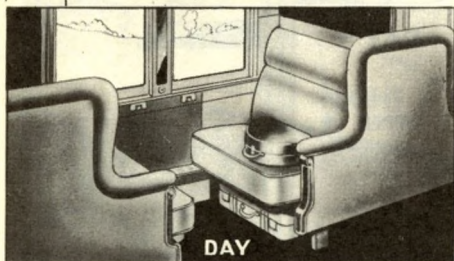
### THE BEDROOM SUITE



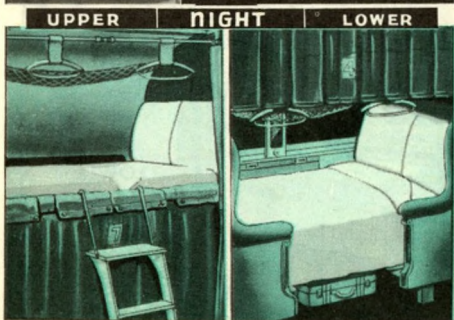
DAY

NIGHT

### THE SECTION



DAY



UPPER

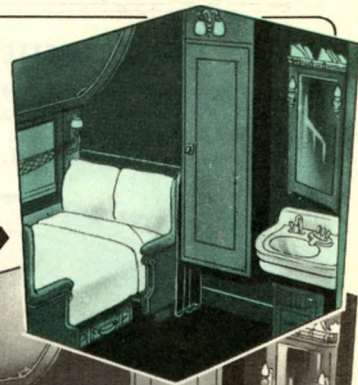
NIGHT

LOWER

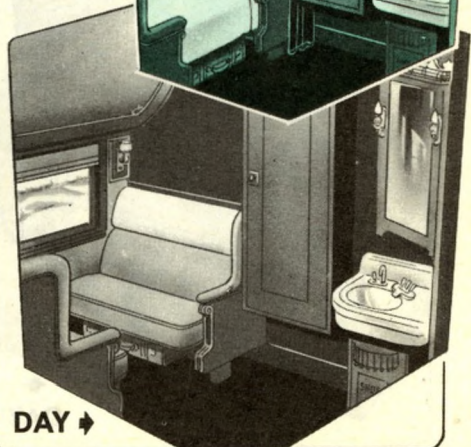
Includes upper and lower berths, both providing a comfortable, sleep-inviting bed. In daytime, section offers two commodious, soft-cushioned reserved seats.

### THE COMPARTMENT

A private room with comfortable, soft-cushioned seats for day use. Sleeping accommodations include bed and upper berth. Individual toilet and lavatory.



NIGHT



DAY

### ACCOMMODATIONS ILLUSTRATED ARE PROVIDED IN

- 12 Section, 1 Drawing Room Cars
- 
- 10 Section, 1 Drawing Room, 2 Compartment Cars
- 
- 8 Section, 1 Drawing Room, 2 Compartment Cars
- 
- 8 Section, 5 Double Bedroom Cars
- 
- 8 Section, 1 Drawing Room, 3 Double Bedroom Cars
-







## RAIL AND PULLMAN FARES

The Fares shown herein are those effective on April 15, 1958, and do not reflect any increase that may be authorized at a later date. These Railroad and Pullman fares are published as information only, are subject to change without notice and do not include 10% Federal and 2% Missouri taxes.

	RAILROAD FARES				PULLMAN FARES (One Way) IN STANDARD CARS									
	In Coaches		In Pullmans		Lower Berth	Upper Berth	Roomette One Person	Bed Room One Person	ⓐBed Room Two Persons	Compartment One Person	Compartment Two or More Persons	Drawing Room One Person	Drawing Room Two or More Persons	Seat Fare
	One Way	6 Months R. T.	One Way	6 Months R. T.										
<b>TEXARKANA, ARK., TO</b>														
Chicago..... Ill.	\$23.18	\$41.75	\$32.21	\$58.00	\$ 9.95	\$ 7.55	\$13.80	\$18.90	\$21.90	\$19.90	\$23.85	\$27.40	\$33.35	\$.....
Houston..... Tex.	9.80	17.65	13.72	24.70	5.80	4.40	8.10	10.90	12.75	11.55	13.85	15.90	19.35	.....
Little Rock..... Ark.	4.39	7.95	6.14	11.10	5.80	4.40	8.10	10.90	12.75	11.55	13.85	15.90	19.35	G1.50
Memphis..... Tenn.	8.21	14.80	11.47	20.65	5.80	4.40	8.10	10.90	12.75	11.55	13.85	15.90	19.35	.....
St. Louis..... Mo.	14.98	27.00	20.96	37.75	6.70	5.15	9.40	12.75	14.65	13.40	16.05	18.40	22.40	.....
San Antonio..... Tex.	12.96	23.35	18.13	32.65	6.70	5.15	9.40	12.75	14.65	13.40	16.05	18.40	22.40	.....
<b>WICHITA, KAN., TO</b>														
Colorado Springs..... Colo.	13.26	23.90	18.56	33.45	6.70	5.15	.....	12.75	14.65	13.40	16.05	18.40	22.40	.....
Denver..... Colo.	14.98	27.00	20.96	37.75	6.70	5.15	.....	12.75	14.65	13.40	16.05	18.40	22.40	.....
Los Angeles..... Cal.	43.04	77.25	60.26	103.80	19.10	14.55	.....	.....	.....	38.20	45.85	52.55	64.00	.....
Portland..... Ore.	49.89	77.25	69.86	108.05	21.50	16.30	30.10	40.85	47.30	43.00	51.65	59.15	72.05	.....
Pueblo..... Colo.	12.03	21.70	16.83	30.30	6.70	5.15	.....	12.75	14.65	13.40	16.05	18.40	22.40	.....
Salt Lake City..... Utah	28.29	50.95	39.61	71.30	13.25	10.10	18.65	25.25	29.20	26.55	31.85	36.50	44.45	.....
Seattle..... Wash.	53.51	77.25	74.92	108.05	21.50	16.30	30.10	40.85	47.30	43.00	51.65	59.15	72.05	.....
St. Louis..... Mo.	13.58	24.45	18.97	34.15	A5.80	A4.40	A8.10	A10.90	A12.75	A11.55	A13.85	A15.90	A19.35	H1.85
San Francisco..... Cal.	47.86	82.90	67.00	111.95	19.10	14.55	.....	.....	.....	38.20	45.85	52.55	64.00	.....

ⓐ—For Bedroom Suite charges consult ticket agent.

H—Parlor Car Seat Fare From Kansas City Pullman Seat Slightly Higher.

A—From Kansas City, Mo.

G—Pullman Seat Fare.

### EXCLUSIVE OCCUPANCY CHARGES FOR BED ROOMS, ROOMETTES, DRAWING ROOMS, AND COMPARTMENTS

For exclusive occupancy of night service, or night and day continuous service of drawing room in United States, minimum 1½ adult one way rail fare; for compartment, Bed Room or Roomette only one rail fare required (except to points east of Chicago, St. Louis, Memphis and New Orleans—Ask the Ticket Agent).

#### PULLMAN RATES FROM LAREDO, TEX. TO MEXICO

To derive through Pullman rates from points in the United States to destinations in Mexico, add rates from point of origin to Laredo, Texas, to those quoted below therefrom:

AND	BETWEEN LAREDO, TEXAS		Bed Room One Person	Bed Room Two Persons	Compt.	Drawing Room	Seat Fare for Day Travel
	Lower	Upper					
Monterrey, Mex.....	\$ 2.83	\$ 2.26	\$ 5.09	\$ 5.65	\$ 7.91	\$10.73	\$ .95
Saltito, Mex.....	3.95	3.16	7.10	7.89	11.04	14.98	.....
San Luis Potosi, Mex.....	6.48	5.18	11.65	12.95	18.12	24.59	.....
San Miguel Allende.....	7.36	5.89	13.24	14.71	20.59	27.95	.....
Queretaro, Mex.....	7.65	6.12	13.77	15.30	21.42	29.06	.....
Mexico City, Mex.....	9.89	7.91	17.79	19.77	27.68	37.56	.....

Only one coupon reading, "Missouri Pacific", is necessary from St. Louis or Memphis to destinations in Texas on Missouri Pacific and Texas-Pacific railroads.

\* For exclusive occupancy of a Bed Room in Mexico 1½ Adult Railroad tickets are required; for a Bed Room Suite 2½ adult railroad tickets are required; for a compartment 1½ adult railroad tickets are required, and for a Drawing Room 2 adult railroad tickets are required. The Pullman Co. charge for Drawing Room or Compartment in Mexico is the same for either single or double occupancy of such accommodations.

#### SCHEDULES—SERVICE

Time noon to midnight in **Heavy Figures**. Time midnight to noon in **Light Figures**.

Trains do not stop where no time is shown. Junction, transfer points and important cities are shown in **bold face type**. A rule indicates a junction point.

**Schedules Subject to Change**—Schedules herein are subject to change without notice, and the Missouri Pacific R. R. assume no responsibility for errors in time tables, inconvenience or damage resulting from delayed trains or failure to make connections.

**Mileage**—The mileage used in time tables is shown only for the information of passengers and is not to be used in computing fares.

**Transfer from Through Train to Local Train**—Passengers destined to points at which through train does not stop may use through train to last stopping point short of destination and transfer to first connecting local train therefrom. Passengers desiring this arrangement must notify first Conductor or Train Auditor when presenting tickets.

**Honoring Tickets**—All tickets, one-way and round-trip (except where optional or variable routes are permitted) will be honored over short line only.

#### TICKETS—(LOST, REDEMPTION, ETC.)

**Children** under five years of age free when accompanied by parent or guardian; five years of age and under twelve, one-half fare; twelve years of age or over, full fare.

**Adjustment of Fares**—In case of a difference of opinion with Conductors or Agents, pay the fare required; take receipt and communicate with R. J. McDermott, General Passenger Traffic Manager, St. Louis, Mo.

**Lost Tickets**—If you lose your railroad ticket give notice of your loss to the conductor. Pay cash fare on train or purchase another ticket, taking receipt. Forward receipt with details of the loss to the Passenger Traffic Manager of the road from which you bought the original ticket, and you will be advised whether or not any refund can properly be made.

**Redemption of Tickets**—Tickets unused or partly used will be redeemed under tariff regulations at proper value and should be handled with R. J. McDermott, General Passenger Traffic Manager, St. Louis, Mo.

#### GENERAL INFORMATION

##### BAGGAGE—(ALLOWANCE, LIABILITY, MARKING, ETC.)

**Hand Baggage in Pullman Cars**—Passengers are requested, for the convenience and comfort of themselves and other passengers on the train, to check their hand baggage whenever possible, except that actually needed for personal use enroute. There is a limitation as to the size of baggage which can be placed under Pullman seats. The following are the maximum dimensions—9x19x28½ inches.

This Railroad will not guarantee to forward baggage or property on same train with passenger or within a given or specified time limit, but reserves the right to forward it upon a preceding or following train.

One hundred and fifty pounds of baggage, not exceeding \$100 in value, will be checked without charge for each adult passenger, and seventy-five pounds, not exceeding \$50 in value, for each child traveling on a half-ticket.

No single piece of baggage exceeding 300 pounds in weight or exceeding \$2,500 in value, will be checked. Free allowances subject to tariff stipulations as to contents, weight and value.

Unless a greater sum is declared by the passenger and charges paid for increased valuation at time of delivery to carrier, the value of baggage belonging to or checked for an adult passenger shall be deemed and agreed to be not in excess of \$100, and the value of the baggage belonging to or checked for a child traveling on a half ticket shall be deemed and agreed to be not in excess of \$50.

All baggage should be marked. Location of baggage delayed or astray is expedited when the container is marked with name or initials.

This railroad will not accept for transportation as baggage from any one passenger, property that is declared to exceed \$2,500 in value.

Money, jewelry, silverware, negotiable paper and like valuables, radios, household goods, liquids, explosives, fragile or perishable articles, should not be enclosed in baggage. Under no conditions will the carriers be responsible for such articles in baggage nor for damage caused by same.

**Baby Carriages, Go-carts, Bicycles** and similar articles enumerated in tariff when used in connection with journey will be checked and included in weight and value of passenger's baggage.

**Dogs, Cats and Birds**—In the United States dogs, cats, birds and other household pets, when in baskets or other containers, may be taken into private room accommodations of Sleeping cars. Or, they may be transported in baggage service subject to tariff regulations.

**Lost Articles**—Inquire of R. A. Watson, General Baggage Agent, St. Louis, Mo. Articles found in and around stations or upon trains should be turned over to Agent or Conductor, or forwarded to R. A. Watson, General Baggage Agent, St. Louis, Mo.





**Index to Stations—Continued**

Table No.	Table No.	Table No.	Table No.
Swissvale, Kan. 9	Tucson, Ariz. 7	*Viola, Tex. 21	White, Ark. 1
*Sycamore, Kan. 9	... C.G.I, 11,14	Vletts, Kan. 6	Whitehall, Ark. 1
*Sylamore, Ark. 7	Tullos, La. 17	Von Ormy, Tex. 19	Whitsett, Tex. 1
Syracuse, Mo. 1,2	Tunnell, Mo. 1		*White House, Mo. 11,14
	*Tuckerman, Ark. 1		White Castle, La. 17
	11,12,13,14,15,16	*Wabash, Ark. 25	Whitewater, Kan. 1
Tabo, Mo. 1	Tucker, Tex. 19	Wabash, Neb. 1,2	White Water, Mo. 1
*Talaia, Okla. 9	*Turkey, Ark. 7	Waco, Tex. 1	*Whitman, Kan. 6
Talla Benna, La. 1	Turon, Kan. 7	*Waconda Springs, Kan. 6	*Wichita, Kan. 1
Tallahua, La. 1	*Twin Creek, Ark. 7	Wagon, Okla. 9	
Talmage, Neb. 1	*Tyler, Tex. 20	*Wagstaff, Kan. 9	
Tamaroa, Ill. 1	Tyro, Kan. 9	Wallace, Ark. 1	
Tamina, Tex. 13,16	*Tyrone, La. 23	Walnut Ridge, Ark. 11,12,13,14,15,16	
Tangeman, Neb. 1		Walsh, Ill. 1	*Williamsville, Mo. 11,12,13,14,15,16
*Tausig, Kan. 1	*Union, Neb. 1,2	Walton, Neb. 1,2	*Wills, Kan. 1,2
*Taylor, Tex. 12,15,19	*Union Electric, Mo. 1,2	Waltonville, Ill. 1	Wills, Tex. 13,16
Terrell, Mo. 1	Mo. 1,2	*Ward, Ark. 11,14	Wilmar, Ark. 1
Terrell, Tex. 11,14	*Uniontown, Kan. 1	Wardville, La. 1	*Wilmot, Ark. 17
Terry, La. 1	Upco, La. 1	Ware, Ill. 1	Wilson, Mo. 3,4
Tevis, Kan. 1	Urania, La. 17	Warneck, Ill. 1	Wimel, Ark. 1
*Texarkana, Ark. 1	Urbana, Ark. 1	Warren, Ark. 1	Winchester, Ark. 17
Tex. I, J, K, N, R, 11, 12, 13, 14, 15, 16, 19	Ursula, Ark. 3,4	*Warrensburg, Mo. 1,2,3,4	Winfield, Kan. 1
Texas City, Tex. 1	Uvalde, Tex. 1	Warwick, Kan. 1	Winnboro, La. 1
Thayer, Tex. 1	Valeda, Kan. 1	Washington, Ark. 1	Winter Haven, Fla. 1
Thebes, Ark. 1	Valles Mines, Mo. 1	Washington, D. C. P,Q	Wisner, La. 1
Thebes, Ill. 1	*Valley Park, Mo. 1,2	*Washington, Ark. 11,14	*Witherspoon, Ark. 11,14
Thessing, Ark. 1	Valley Jet, Tex. 19	Waterloo, Mo. 1,2,3,4	Wolcott, Kan. 1,2
Thomure, Mo. 1	Tex. 12,15,19	Waterloo, La. 1	Wolf Lake, Ill. 1
Thordale, Tex. 19	Valmeier, Ill. 1	*Waterproof, La. 1	*Woodlawn, La. 17
Thrall, Tex. 19	*Van Buren, Kan. 9	Waterville, Kan. 6	Woodsboro, Tex. 21
Three Rivers, Tex. 1	Vance, Ark. 1	*Watova, Okla. 9	Woodson, Ark. 17
*Tilawah, Okla. 9	11,12,13,14,15,16	Watson, Ark. 25	Woodston, Kan. 1
*Tift, Mo. 11,14	*Vanderbilt, Tex. 21	Wauneta, Kan. 1	Woodward, Tex. 1
Tillar, Ark. 17	Van Horn, Tex. 11,14	Waverly, Mo. 1	Woodworth, La. 17
*Tioga, La. 17	Tex. 11,14	Weatherford, Tex. 11,14	Woodridge, Mo. 1
*Tipton, Mo. 1,2	Vandale, Ark. 1	Webb City, Mo. 1	Wrightsville, Ark. 17
Tisdale, Kan. 1	Varner, Ark. 17	Webster, Tex. 1	Wryne, Ark. 1
Tivoli, Tex. 1	Vassar, Kan. 3,4	*Webster Groves, Mo. 1,2,3,4	*Wyoming, Neb. 1,2
Toerville, Kan. 1	Vaughn, La. 1	Weeping Water, Neb. 1,2	*Yaggy, Kan. 3,4
Tongin, Ark. 1	*Velasco, Tex. 1	Weingarten, Mo. 1	*Yancoilin, Ark. 25
Tonovay, Kan. 1	Venue, Ark. 1	Weiße, Ill. 1	Yates Center, Kan. 1
Topeka, Kan. 1	Venus, Tex. 1	Wellington, Mo. 1	*Yellville, Ark. 7
*Torbett, La. 23	*Verdon, Neb. 1,2	*Westaco, Tex. 23	Yoder, Kan. 5
Toronto, Kan. 1	*Vermillion, Kan. 6	Westbury, Tex. 23	Yuma, Kan. 6
Towanda, Kan. 1	*Vernon, Kan. 9	*Westfield, Tex. 13,16	
*Tower Grove (See St. Louis)	*Vian, Okla. 9	Westover, La. 23	
Towle, Ark. 1	Vicks, Ark. 1	Westphalia, Kan. 9	
*Townser, Colo. 3,4	*Victor, Tex. 23	Wetmore, Kan. 6	
Transylvania, La. 1	*Victoria, Tex. 11,14	Wetmore, Tex. 19	
Traskwood, Ark. 11,12,13,14,15,16	Vida, La. 1	Whelen Springs, Ark. 22	
Tribune, Kan. 3,4	Vidalia, La. 1		
*Trinity, Tex. 13,16	Vidauri, Tex. 21		
*Troup, Tex. 12,13,15,16,19,20	Vincent, Ark. 11,14		
	Vinceland, Mo. 11,14		
	Vinton, Kan. 1		

**MISSOURI PACIFIC RAILROAD COMPANY**

**RUSSELL L. DEARMONT, President**..... St. Louis 3, Mo.  
**H. M. JOHNSON, Executive Vice President**..... St. Louis 3, Mo.

**TRAFFIC DEPARTMENT**

H. L. SCHAEFFER, Vice President—Traffic..... St. Louis, Mo.  
 C. L. BUTLER, Assistant Vice President—Traffic..... St. Louis, Mo.  
 P. B. DUDEK, Assistant to Vice President—Traffic..... St. Louis, Mo.

**PASSENGER**

R. J. McDERMOTT, General Passenger Traffic Manager..... St. Louis, Mo.  
 T. D. MOSS, Assistant Passenger Traffic Manager..... St. Louis, Mo.  
 J. B. REYNOLDS, General Passenger Agent..... St. Louis, Mo.  
 E. E. SPENCER, Assistant General Passenger Agent..... St. Louis, Mo.  
 E. J. FALK, Traffic Manager..... Houston, Tex.  
 C. L. SHORTRIDGE, Assistant Passenger Traffic Manager..... Houston, Tex.  
 WM. H. A. TURNER, Traffic Manager..... Kansas City, Mo.  
 J. F. DOLLINS, Assistant General Passenger Agent..... Kansas City, Mo.  
 O. W. WILLIAMS, Traffic Manager..... Little Rock, Ark.  
 H. R. KASTMAN, Assistant General Passenger Agent..... Little Rock, Ark.  
 J. T. LEZE, Assistant General Passenger Agent..... New Orleans, La.  
 H. G. CLEVELAND, Assistant General Passenger Agent..... San Antonio, Tex.  
 A. C. DRUI, Superintendent Dining & Parlor Cars..... St. Louis, Mo.  
 S. WEINBERG, Assistant Superintendent Dining & Parlor Cars..... St. Louis, Mo.  
 R. A. WATSON, General Baggage Agent..... St. Louis, Mo.

**FREIGHT**

J. M. HREBEC, General Freight Traffic Manager. (Sales)..... St. Louis, Mo.  
 J. S. SMITH, General Freight Traffic Manager. (Rates)..... St. Louis, Mo.  
 N. E. KERNELL, Asst. to General Freight Traffic Manager..... St. Louis, Mo.  
 C. C. HAHNE, Freight Traffic Manager. (Sales)..... St. Louis, Mo.  
 R. T. OLIVER, Freight Traffic Manager. (Sales)..... St. Louis, Mo.  
 R. L. BROWN, Freight Traffic Manager. (Rates)..... St. Louis, Mo.  
 W. J. BOEWER, Freight Traffic Manager. (Rates)..... St. Louis, Mo.  
 W. J. SCHILL, Freight Traffic Manager. (Rates)..... Houston, Tex.  
 J. N. SANDERS, Foreign Freight Traffic Manager..... St. Louis, Mo.  
 C. J. BINDNER, Coal Traffic Manager..... St. Louis, Mo.  
 R. T. WILLIAMS, Merchandise Traffic Manager..... St. Louis, Mo.  
 R. T. WATT, Perishable Traffic Manager..... St. Louis, Mo.  
 E. J. FALK, Traffic Manager..... Houston, Tex.  
 WM. H. A. TURNER, Traffic Manager..... Kansas City, Mo.  
 O. W. WILLIAMS, Traffic Manager..... Little Rock, Ark.  
 G. B. RIGGAN, Assistant Traffic Manager..... New Orleans, La.  
 GEO. BRUNNER, Eastern Traffic Manager..... New York, N. Y.  
 W. J. SIERING, Western Traffic Manager..... San Francisco, Cal.  
 H. C. WESTBROOK, Assistant Traffic Manager..... Chicago, Ill.  
 CHAS. HOFER, Assistant Traffic Manager..... Detroit, Mich.  
 J. A. FETZ, Assistant Traffic Manager..... Memphis, Tenn.

**INDUSTRIAL DEPARTMENT**

E. SMITH REED, Director of Industrial Development..... St. Louis, Mo.  
 Director of Industrial Development..... Houston, Tex.

**AGRICULTURAL DEPARTMENT**

W. B. COOK, Agricultural Agent..... Houston, Tex.

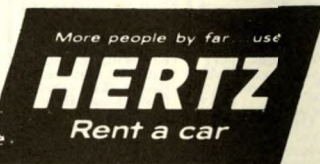
**Go by Train...Rent a Hertz Car There!**

Great travel combination! Try the swift, relaxing comfort of a modern train with the convenience of a car just like your own at your destination, and you have it: The Hertz Rail-Auto Travel Plan.

It's easy—and economical. Just ask your ticket seller to make your reservation. A cleaner, more dependable car will be waiting. And, low Hertz rates include all gasoline, oil and proper insurance.

Remember: anywhere you go by train, you can rent a car from Hertz. Look for Hertz desks or direct-line "Call A Car" telephones in every depot. Try The Hertz Idea!

Ask about "Rent it here... Leave it there" service!



## TRAFFIC REPRESENTATIVES

### ALEXANDRIA, LA.—

Mo. Pac. Pass. Sta., Phone 6656.  
R. J. BALL.....General Agent

### ATCHISON, KAN.—

201 So. 5th St., Phone 49.  
R. D. PIERCE.....Div. Frt. & Pass. Agt.  
Union Depot, Phone 11  
J. E. HERROD.....Ticket Agent

### ATLANTA 3, GA.—

1028 Fulton Nat'l. Bank Bldg., Phone Jackson  
1-2422.  
O. W. STORCK.....General Agent  
J. A. BLOODWORTH.....Dist. Pass. & Frt. Agt.

### AUSTIN 3, TEX.—

M. P. Pas. Station, Lamar Blvd. and Third, Phone  
Greenwood 6-6501.  
A. R. FOX.....Gen. Agt. Pass. Dept.  
C. H. BLOCKER.....Depot Ticket Agt.  
301 West 3rd St., Phone Greenwood 7-6861.  
H. J. HOLZMANN.....Gen. Agt. Frt. Dept.

### BATON ROUGE 2, LA.—

201 I. C. Passenger Station, Phone Dickens 4-8521.  
F. W. NASON.....Div. Frt. & Pass. Agt.

### BEAUMONT, TEX.—

M. P. Frt. Station, Phone TE 2-0209.  
F. L. EVANS.....General Agent

### BIRMINGHAM 3, ALA.—

708 Empire Building, Phone Fairfax 2-1667.  
R. J. MARSHALL.....General Agent  
W. E. SHUEMAKER.....Dist. Pass. & Frt. Agt.

### BOSTON 8, MASS.—

515 Old South Bldg., Phone Liberty 2-8744.  
H. A. BUDREAU.....General Agent.

### BROWNSVILLE, TEX.—

M. P. Pass. Station, Gen. Agt. Phone Lincoln  
2-4432—Ticket Agent Phone Lincoln 2-4441.  
E. L. SPENRATH.....General Agent  
S. F. LAMONT.....Pass. & Tkt. Agt.

### BUFFALO 2, N. Y.—

309 Buffalo Industrial Bank Bldg., Phone Madison  
2513.  
A. R. COPELAND.....Gen. Agt. Frt. Dept.

### CAIRO, ILL.—

M. P. Station, Phone 789.  
E. G. COWELL.....General Agent

### CAPE GIRARDEAU, MO.—

M. P. Station, Phone 5-5515.  
E. L. ROBINSON.....Gen. Agt. Frt. Dept.

### CHATTANOOGA 2, TENN.—

417 Chattanooga Bank Bldg., Phone Amherst  
6-4762.  
A. W. LANGE.....General Agent

### CHICAGO 3, ILL.—

680 Marquette Bldg. 140 S. Dearborn St., Phone  
State 2-5130.  
H. C. WESTBROOK.....Asst. Traffic Manager  
A. E. ELKINS.....Gen. Agt. Pass. Dept.  
G. L. HARMON.....Gen. Agt. Frt. Dept.  
T. F. CARMODY.....Dist. Pass. Agt.  
W. L. FASZHZOLZ.....Traffic Rep.  
V. A. ROTHE.....Traffic Rep.  
G. E. MURMANN.....Com'l. Agt.  
.....Foreign Frt. Agt.

### CHICAGO 8, ILL.—

1425 S. Racine Ave., Phone State 2-5130.  
W. J. KAVANAUGH.....Dist. Mgr. Perish'le Traf.

### CINCINNATI 2, OHIO—

2004 Carew Tower, Phone Main 1-4248.  
D. W. JORDAN.....General Agent  
W. L. PORTTEUS.....Dist. Pass. Agt.

### CLEVELAND 13, OHIO—

1325 Terminal Tower, Phone TO 1-6617  
L. V. Richards.....General Agent

### COLORADO SPRINGS, COLO.—

6 S. Tejon St., Phone MELrose 4-1776.  
E. H. MARTIN.....General Agent

### CORPUS CHRISTI, TEX.—

M. P. Lines, Passenger Station, Phone Tulip  
4-9415.  
D. E. SNOW.....General Agent  
A. W. JOHNSON.....Dist. Pass. Agt.  
W. F. MURPHY.....Depot Tkt. Agt.  
Phone Tulip 2-1756

### DALLAS 1, TEXAS—

1601 Kirby Bldg., Phone Riverside 2-4575.  
J. H. LANG.....General Agent  
C. W. OLIVE.....Dist. Pass. Agt.

### DENVER 2, COLO.—

515 Seventeenth St., Phone Main 3-3239.  
M. P. ECKMAN.....Exec. Representative  
J. W. BATEMAN.....General Agent  
L. W. HAMMANN.....Dist. Pass. Agt.  
L. J. DETWILER.....Traffic Rep.

### DETROIT 2, MICH.—

7-166 General Motors Bldg., Phone Trinity 3-5400  
CHARLES HOFER.....Asst. Traffic Mgr.  
W. W. HOTT.....General Agent  
E. G. RUNKLE.....Com'l Agent

### EAST ST. LOUIS, ILL.—

1001 Spivey Bldg., Phone Upton 4-1880  
JOHN R. MILLS.....Div. Frt. Agt.

### EL DORADO, ARK.—

M. P. Pass. Station, Phone UN 3-8158.  
D. H. HAYNIE.....General Agent

### EL PASO, TEX.—

509 Mills Bldg., Phone Keystone 2-7352.  
A. T. PEERS.....General Agent

### EUGENE, OREGON

206 Ardel Bldg., Phone Diamond 5-4447.  
F. K. MASSEY.....General Agent

### FT. SMITH, ARK.—

M. P. Pass. Station, Phone 3-5163.  
J. L. WELLS.....General Agent

### FT. WORTH 2, TEX.—

912-13 Continental Life Bldg., Phone Edison  
2-6121  
E. R. SAUERBERG.....General Agent

### FT. WORTH 6, TEX.—

215 Live Stock Exchange.  
G. C. JONES.....Live Stock Agent

### FRESNO 21, CAL.—

208 T. W. Patterson Bldg., Phone Adams 7-3869.  
S. O. SELDER.....General Agent

### GALVESTON, TEX.—

405 Texas Bldg., 407—22nd St., Phone SO 5-5514.  
H. L. DURHAM.....General Agent

### HARLINGEN, TEX.—

M. P. Frt. Station, Phone Garfield 3-0130.  
H. W. KASSLING.....Executive General Agent  
M. P. Pass. Station, Phone Garfield 3-0130.  
V. A. SPIEGELHAUER.....Pass. & Tkt. Agt.

### HAVANA, CUBA—

Edificio Longa 409, P. O. Box 272, Cable Address  
"MOPALI" Phone A 8652  
G. M. FERNANDEZ.....General Agent

### HELENA, ARK.—

M. P. Pass. Station, Phone Hickory 4-3401-02.  
J. H. DWYER.....Div. Frt. & Pass. Agt.

### HOT SPRINGS, ARK.—

M. P. Pass. Sta., Phone NA 3-8331.  
E. J. COX.....Pass. & Tkt. Agt.

### HOUSTON 2, TEXAS—

502 Union Station.  
E. J. FALK.....Traffic Manager  
Room 100 Union Station, Crawford St. at Texas,  
Ave., Phone CCapital 7-3151.  
W. T. MORRISON.....Gen. Agt. Pass. Dept.  
M. E. DEALY.....City Pass. Agt.  
W. B. GEORGE.....City Pass. Agt.  
E. D. MONK.....Trav. Pass. Agt.  
W. M. GENTRY.....Depot Tkt. Agt.  
Room 515 Union Station, Phone CCapital 7-3151.  
W. J. WHITAKER.....Gen. Frt. Agt.  
I. M. GILES.....Gen. Agt. Frt. Dept.  
C. F. OUSLEY.....Live Stock Agt.

### HUTCHINSON, KAN.—

M. P. Sta., 301 S. Main St., Phone Mohawk 2-5494.  
C. L. WEAVER.....General Agent

### INDIANAPOLIS 4, IND.—

605 Merchants Bank Bldg., Phone Melrose 2-5339.  
L. W. SARGENT.....General Agent  
D. H. EATON.....Dist. Pass. Agt.

### JACKSONVILLE 7, FLA.—

1708 Prudential Bldg., 841 Miami Road, Phone  
EX 8-0881.  
K. A. JAECKEL.....General Agent

### JEFFERSON CITY, MO.—

M. P. Pass. Sta., Phone 6-2141-42.  
E. E. HUTCHISON.....Ticket Agent

### JOPLIN, MO.—

M. P. Passenger Station, Phone No. Mayfair  
3-8080.  
C. H. HERMANN.....General Agent

### KANSAS CITY, KAN.—

Town House Hotel, Phone ATwater 1550.  
A. B. NOWELL.....City Ticket Agent

### KANSAS CITY 6, MO.—

616 Ry. Exch. Bldg., Phone VVictor 2-6100.  
F. E. PENNINGTON.....Exec. Gen. Agt.  
627 Ry. Exch. Bldg., Phone VVictor 2-6100.  
WM. H. A. TURNER.....Traffic Mgr.  
J. J. RICHEY.....Asst. Gen. Frt. Agt.  
623 Ry. Exch. Bldg., Phone VVictor 2-6100.  
C. H. GOEHNER.....Divn. Frt. Agt.  
E. D. STRATTON.....General Agent  
630 Ry. Exch. Bldg., Phone VVictor 2-6100.  
J. F. DOLLINS.....Asst. Gen. Pass. Agt.  
City Ticket Office 1029 Grand Ave., Phone VVictor  
2-6100.  
H. E. WEISER.....Dist. Pass. Agt.  
E. V. SMITH.....City Pass. Agent  
W. R. BOOKER.....City Pass. Agt.  
W. F. ATKINS.....City Pass. Agt.  
J. E. ANDERSON.....City Ticket Agt.

### KANSAS CITY 8, MO.—

Union Station  
W. D. TRUEBLOOD.....Station Pass. Agt.

### KANSAS CITY 15, MO.—

861 Live Stock Exchange.  
A. O. SELOVER.....Gen. Live Stock Agt.

### LAKE CHARLES, LA.—

Mo. Pac. Pass. Sta., 300 Clarence St., Phone  
Hemlock 9-2772  
A. J. BATLINER.....Asst. Gen. Frt. & Pass. Agt.

### LAREDO, TEX.—

Mo. Pac. Pass. Sta., 2115 Farragut, Phone Ran-  
dolph 3-3021  
J. N. DUTCHER.....General Agent  
M. P. Pass. Sta., Phone Randolph 3-8511.  
ANTONIO MATA.....Pass. & Tkt. Agt.  
F. E. HALE, JR.....Border Pass. Agt.

### LINCOLN 8, NEB.—

Ninth and S Sts., Phone 2-3277.  
G. W. BILLMYER.....General Agent

### LITTLE ROCK, ARK.—

M. P. Pass. Station, Markham & Victory Sts.,  
Phone Franklin 2-6221.  
O. W. WILLIAMS.....Traffic Mgr.  
H. R. KASTMAN.....Asst. Gen. Pass. Agt.  
B. W. HOUSE.....City Pass. Agt.  
E. E. BARRETT.....Trav. Pass. Agt.  
CHARLES WITSELL.....Depot Ticket Agent  
WM. C. JACOBS.....Asst. Gen. Frt. Agt.  
H. L. SNIDER.....Div. Frt. Agt.  
Passenger Terminal.  
T. S. ARMSTRONG.....Sta. Pass. Agent

### LOS ANGELES 14, CALIF.—

512 Oviatt Bldg., 617 South Olive St., Phone  
Madison 5-1426.  
GLEE C. SMITH.....Asst. Trf. Mgr.  
CHAS. R. SMITH.....General Agent  
RAY KLUSEMAN.....Dist. Pass. Agt.  
O. W. ROWLAND.....Dist. Mgr. Peris'ble Traf.

## TRAFFIC REPRESENTATIVES—Continued

### LOUISVILLE 2, KY.—

294 Starks Bldg., Phone Juniper 4-7279.  
B. C. RAYBURN.....General Agent

### MEMPHIS 3, TENN.—

210 Union Station.  
N. N. HOPKINS.....Executive General Agent  
150 Union Station, Phone Jackson 6-7611.  
T. J. DARRELL.....Dist. Pass. Agt.  
J. M. PHELPS.....City Pass. Agt.

### MEMPHIS 3, TENN.—

504 Sterick Bldg., Phone Jackson 6-7611.  
J. A. FETZ.....Ass't. Trf. Mgr.  
T. S. GLASS.....General Agent

### MEXICO CITY, MEX.—

Cinco de Mayo, 6-B, 1 D.F. Phones Eric 12-47-26,  
Mexicano 12-01-42  
H. CERVANTES.....Exec. Representative  
J. SALCIDO.....Gen. Agt. Pass. Dept.

### MILWAUKEE 3, WIS.—

1003 Majestic Bldg., Phone Broadway 1-6418.  
C. A. BECKER.....Gen. Agt. Frt. Dept.

### MINNEAPOLIS 2, MINN.—

800 Rand Tower Bldg., Phone FEederal 2-5375.  
A. J. SCHILLER.....General Agent

### MONROE, LA.—

Mo. Pac. Pass. Sta., Phone FAirfax 3-6641.  
600 Ouachita Ave.  
M. E. PICKETT.....Div. Frt. & Pass. Agt.

### MONTERREY, MEX.—

Gorostieta Bldg., Matamoros 510 OTE. Phones  
Mex. 3-01-84 Long Distance 110.  
J. CARDENAS, JR.....General Agent

### NASHVILLE 3, TENN.—

935 3rd Nat'l Bank Bldg., Phone ALpine 6-4830.  
L. R. HARWELL.....General Agent

### NATCHEZ, MISS.—

M. P. Frt. Sta., Phone 9001.  
J. C. MINGEE.....General Agent

### NATIONAL STOCK YARDS, ILL.—

Live Stock Exchange, Phone UP 5-0114  
W. A. GROGAN.....Asst. Gen. Live Stock Agt.

### NEW IBERIA, LA.—

M. P. Frt. Sta., Phone Emerson 4-8126.  
L. H. RILEY.....Gen. Agt. Frt. Dept.

### NEW ORLEANS 12, LA.—

704 Richards Bldg., Phone Jackson 5-8244  
G. C. STOHLMAN.....Exec. Gen. Agt.  
708 Richards Bldg., Phone Jackson 5-8244  
G. B. RIGGAN.....Asst. Traffic Mgr.  
J. T. LEZE.....Asst. Gen. Pass. Agt.  
E. MITCHELL.....Dist. Pass. Agent  
W. R. HANNA.....Asst. Gen. Frt. Agt.  
W. J. FORD.....Foreign Frt. Agt.  
Union Passenger Terminal — 1001 Loyola Ave.,  
Phone Tulane 8541.

### NEW YORK 7, N. Y.—

225 Broadway — Transportation Bldg., Phone  
Digby 9-0255.  
GEORGE BRUNNER... Eastern Traffic Mgr.  
W. F. VITT.....Gen. Eastern Pass. Agt.  
J. B. MOONEY.....Dist. Pass. Agt.  
P. L. MOYLE.....Traffic Rep.  
D. A. STEVENS.....Traffic Rep.  
G. J. SCHMIDT.....General Agent  
E. M. JONES.....Foreign Frt. Agt.

### NEW YORK 13, N. Y.—

204 Franklin St., Phone Walker 5-2424.  
C. H. BAYER.....Per. Frt. Agt.

### OAKLAND 12, CALIF.—

Room 715, Central Bldg.  
Phone TE-2-0877-8.  
HAROLD FLY.....General Agent

### OKLAHOMA CITY 2, OKLA.—

1609 Liberty Bank Bldg., Phone Forest 5-2655.  
C. CONSTANCE.....General Agent

### OMAHA 2, NEB.—

719 Omaha Grain Exchange Bldg., Phone  
Jackson 4543.  
J. N. CLARK.....Asst. Gen. Frt. & Pass. Agt.  
H. B. NEWCOMB... Gen'l Agent Pass. Dept.

### PALESTINE, TEXAS—

Missouri Pacific Building, 111 South Magnolia  
Phone 2281  
R. S. NELSON.....Dist. Pass. Agt.

### PARAGOULD, ARK.—

M. P. Station, Phone CE 6-4115  
T. O. FLIPPIN.....Gen'l. Agent

### PHILADELPHIA 3, PA.—

211 Transportation Center Bldg., Phone Ritten-  
house 6-8365.  
H. A. Franke.....General Agent  
R. L. ROBERTS.....Dist. Pass. & Frt. Agt.

### PHOENIX, ARIZ.—

600 Security Bldg., Phone AL 3-5414.  
C. W. HARDY.....General Agent

### PINE BLUFF, ARK.—

Mo. Pac. Pass. Sta., 4th Ave. at State St., Phone  
Jefferson 4-1620, 4-1621  
F. J. BORN.....Div. Frt. & Pass. Agt.

### PITTSBURGH 22, PA.—

Room 357, 2 Gateway Center  
Phone (Freight) Atlantic 1-2561.  
Phone (Passenger) Atlantic 1-3893.  
G. O. OLIVER.....General Agent  
H. J. HENRICH.....Com'l. Agt.  
H. E. MILLER.....Traffic Rep.

### POPLAR BLUFF, MO.—

Mo. Pac. Station, Phone Sunset 5721-22-23.  
W. F. MCCARTHY.....General Agent

### PORTLAND 4, ORE.—

601 Pacific Bldg., Phone Capitol 8-5239-30.  
E. Y. BUTLER.....General Agent

### PUEBLO, COLO.—

Union Station, Phone Lincoln 4-1316 & 4-1315  
O. L. STRIEBY... Asst. Gen. Frt. & Pass. Agt.  
JOS. WEISIGER.....Dist. Pass. & Frt. Agt.

### RICHMOND 19, VA.—

1209 State Planters Bank Bldg., Phone MI 4-2048.  
J. M. BRYAN.....General Agent

### SACRAMENTO 14, CALIF.—

724-726 Forum Bldg., 1107 9th St., Phone Gilbert  
1-5023.  
H. D. FREIVOGEL.....General Agent

### ST. JOSEPH 9, MO.—

601 Corby Bldg., Phone 4-2765.  
H. E. ROLL.....Exec. General Agt.  
E. L. HOOVER.....General Agent

### ST. LOUIS 3, MO.—

1222 Olive Street, Phone Main 1-1000.  
A. J. CONNORS.....Gen. Agt. Pass. Dept.  
F. W. LASKWITZ.....Dist. Pass. Agt.  
C. E. HARTMANN.....City Pass. Agt.  
A. J. BEVERIDGE.....City Pass. Agt.  
E. C. TOENSING.....City Pass. Agt.  
C. A. BRUNS.....City Tkt. Agt.  
Union Station.  
R. P. BASLER.....Sta. Pass. Agt.  
Lobby Mo. Pac. Bldg.  
E. J. BRANGLE.....Gen. Agt.  
100 Mo. Pac. Bldg.  
T. B. ARNOLD.....Gen. Frt. Agt.  
J. J. MYERS.....Gen. Agt. Frt. Dept.  
C. A. BRENNEMAN.....Commercial Agent

### SALINA, KAN.—

M. P. Sta., Phone Taylor 3-2275.  
A. L. WEBB.....Div. Frt. & Pass. Agt.

### SALT LAKE CITY 1, UTAH—

201 Judge Bldg., Phone Empire 4-1928  
B. F. LANE.....Gen. Agt.

### SAN ANTONIO 7, TEXAS—

Mo. Pac. Pass. Sta., Phone Capitol 6-3292.  
W. E. BABEL.....Exec. General Agt.  
E. J. ROTTENSTEIN... Gen. Agt. Frt. Dept.  
L. M. FERGUS.....Asst. Gen. Live Stock Agt.

### SAN ANTONIO 5, TEXAS—

123 North Medina St., Phone Capitol 6-3292.  
H. G. CLEVELAND... Asst. Gen. Pass. Agt.  
W. C. LANE.....Dist. Pass. Agt.  
J. F. SMITH.....City Pass. Agt.  
G. P. DUBOSE.....Pass. & Tkt. Agt.

### SAN FRANCISCO 5, CALIF.—

593 Monadnock Bldg., Phone Sutter 1-1220.  
W. J. SIERING.....Western Traffic Mgr.  
J. J. SCHNATMEIER... Dist. Pass. & Frt. Agt.  
L. L. SMITH.....Asst. Trf. Mgr.  
I. J. KEYES.....General Agent

### SEATTLE 1, WASH.—

852 Stuart Bldg., Phone Main 3-7040  
J. S. ROGERS.....General Agent

### SEDALIA, MO.—

MoPac. Psgr. Sta., Phone Taylor 6-5182  
J. F. DOWNS.....Div. Frt. & Pass. Agent  
Ticket Agent Phone Taylor 6-0088  
C. E. MCKENZIE.....Depot Tkt. Agt.

### SHREVEPORT 45, LA.—

409 Medical Arts Bldg., 624 Travis, Phone 3-7374.  
W. B. KEY.....General Agent  
D. T. WACHTER.....Traffic Rep.

### SIOUX CITY 1, IOWA—

314 Benson Bldg., Phone 86234.  
A. M. SLOSAR.....General Agent

### SOUTH OMAHA, NEB.—

126 Live Stock Exchange.  
R. H. KURT.....Live Stock Agent

### SPRINGFIELD, MO.—

M. P. Sta., Phone University 4-0729.  
D. W. SWIFT.....General Agent

### STOCKTON 2, CALIF.—

American Trust Bldg., 22 N. San Joaquin, Phone  
Howard 2-0469.  
J. R. TORBETT.....General Agent

### TEXARKANA, ARK.—

M. P. Frt. Sta., Phone 2-6121 & 2.  
W. J. FANT.....Div. Frt. & Pass. Agt.

### TOPEKA, KAN.—

M. P. Frt. Sta., Phone Flanders 4-8319.  
R. D. PIERCE, Jr.....General Agent

### TULSA 3, OKLA.—

216 Enterprise Bldg., Phone Gibson 7-7177.  
L. B. BARTLETT.....General Agent

### TYLER, TEXAS—

M. P. Frt. Sta., Phone LY 4-7269  
H. C. CARSWELL, JR.....General Agent

### WACO, TEXAS—

711 Southwestern Indemnity Bldg., Phone Plaza  
2-2587.  
C. J. PLUMMER.....General Agent

### WASHINGTON 4, D. C.—

931 National Press Bldg., Phone National 8-2921.  
F. E. RICHTER.....Executive Repr.  
R. T. SCHLUDE.....General Agent

### WICHITA 2, KAN.—

M. P. Pass. Sta., 302 W. Douglas St., Phone  
Amherst 5-2651.  
G. W. CARLETON... Asst. Gen. Frt. & Pass. Agt.  
R. H. LE PELL.....Com'l. Agent

### WINSTON-SALEM 3, N. C.—

1112 Reynolds Bldg., Phone Park 2-5352.  
C. S. CHANCE.....General Agent

# Condensed FREIGHT SCHEDULES

Between the St. Louis Gateway and...

Read Down

## DALLAS, FT. WORTH, EL PASO and LOS ANGELES

Read Up

Train 65 and Connections	Train T&P 67 and Connections		Train 60 and Connections	Train 72 and Connections
2.00AM Tu	8.45PM Mo	Lv. Dupo (East St. Louis)..... Ar	11.59AM We	2.00AM Th
5.00AM We	3.30PM Tu	Ar. Dallas (Via T&P)..... Lv	11.59AM Tu	9.20PM Tu
7.00AM We	5.00PM Tu	Ar. Ft. Worth..... Lv	10.00AM Tu	8.10PM Tu
11.59AM Th	10.00AM We	Ar. El Paso..... Lv	12.30PM Mo	
		Ar. Los Angeles..... Lv		

## PALESTINE, WACO, SAN ANTONIO, CORPUS CHRISTI and LAREDO

Train 65 and Connections	Train 67 and Connections		Train 60 and Connections	Train 76 and Connections
2.00AM Tu	8.30PM Mo	Lv. Dupo (East St. Louis)..... Ar	11.59AM Th	10.00PM We
8.30PM Tu	1.30PM Tu	Ar. Texarkana..... Lv	7.00PM We	10.30PM Tu
9.00AM We	8.50PM Tu	Ar. Palestine..... Lv	4.30AM We	12.01PM Tu
4.15AM Th	4.15AM Th	Ar. Waco..... Lv	3.10PM Mo	
1.00AM Th	7.50AM We	Ar. San Antonio..... Lv	11.15AM Tu	5.30PM Mo
5.30AM Fri	5.30AM Th	Ar. Corpus Christi..... Lv	8.00PM Mo	
6.20AM Fri	6.20AM Th	Ar. Laredo..... Lv	3.30AM Tu	

## BEAUMONT, HOUSTON, GALVESTON, CORPUS CHRISTI and BROWNSVILLE

Train 361 and Connections	Train 67 and Connections	Train 369 and Connections	Train 65 and Connections		Train 60 and Connections	Train 76 and Connections	Train 360 and Connections	Train 370 and Connections
7.00PM Mo	8.30PM Mo	3.00AM Tu	2.00AM Tu	Lv. Dupo (East St. Louis)..... Ar	11.59AM We	10.00PM We	11.30AM We	3.00AM Th
8.00PM Mo	1.30PM Tu		8.30PM Tu	Ar. Texarkana..... Lv	7.00PM Tu	10.30PM Tu		
7.30PM Tu	2.30PM Tu		10.40PM Tu	Lv. Texarkana..... Ar	1.30PM Tu	8.30PM Tu		
8.00PM Tu				Ar. Alexandria..... Lv				9.30AM Tu
3.00AM We		8.45AM We		Lv. Alexandria..... Ar				8.00AM Tu
6.00AM We	4.00AM We		5.00PM We	Ar. Beaumont..... Lv	5.00PM Mo	5.00AM Tu		12.10AM Tu
3.30AM Th	3.30AM Th		3.30AM Th	Ar. Houston..... Lv	9.00PM Su	9.00PM Mo		10.00PM Mo
5.30AM Th	5.30AM Th		5.30AM Fr	Ar. Galveston..... Lv	8.00PM Su			8.00PM Su
2.00PM Th	2.00PM Th		2.00PM Fr	Ar. Corpus Christi..... Lv		1.00AM Mo		1.00AM Mo
				Ar. Brownsville..... Lv				

## PUEBLO, DENVER, SALT LAKE CITY, OGDEN and SAN FRANCISCO

Train 61 and Connections	Train 81 and Connections		Train 62 and Connections	Train 68
11.00AM Mo	8.00PM Mo	Lv. St. Louis..... Ar	6.00PM Fr	5.30AM We
7.30PM Mo	8.00AM Tu	Lv. Kansas City..... Ar	7.30AM Fr	4.45PM Tu
3.00PM Tu	10.00PM Tu	Ar. Pueblo (M. T.)..... Lv	11.00AM Th	5.00PM Mo
11.30PM Tu	4.00AM We	Ar. Denver (D&RGW) (M. T.)..... Lv	9.00PM We	6.30AM Mo
1.00PM We	7.30PM We	Ar. Salt Lake City (D&RGW) (M. T.)..... Lv	6.00AM We	
3.00PM We	9.30PM We	Ar. Ogden (D&RGW) (M. T.)..... Lv	2.00PM We	
		Ar. San Francisco..... Lv		

## KANSAS CITY, ATCHISON, ST. JOSEPH, LINCOLN and OMAHA

Train 71 and Connections	Train 75 and Connections		Train 70 and Connections	Train 70 and Connections	Train 62 and Connections
1.30AM Mo	2.00PM Mo	Lv. St. Louis..... Ar	6.30AM Tu	6.30AM Tu	6.00PM Tu
11.00AM Mo	1.00AM Tu	Ar. Kansas City..... Lv	8.30PM Mo	8.30PM Mo	9.00AM Tu
11.50PM Mo	11.00AM Tu	Ar. Atchison..... Lv	1.30PM Mo	5.00PM Mo	1.15AM Tu
4.00AM Tu	11.59AM Tu	Ar. St. Joseph..... Lv		4.00PM Mo	
5.35AM Tu	5.35AM We	Ar. Lincoln..... Lv	10.00PM Su		
6.15AM Tu	2.00PM Tu	Ar. Omaha..... Lv	6.00AM Su		8.00PM Mo

## JOPLIN, WICHITA, HUTCHINSON, TOPEKA and SALINA

Train 81 and Connections	Train 79 and Connections		Train 62 and Connections	Train 78-80 and Conn.
8.00PM Mo	7.00PM Mo	Lv. St. Louis..... Ar	6.00PM We	3.00AM We
	5.00AM We	Lv. Joplin..... Lv	2.30PM Tu	
	4.00PM Tu	Ar. Wichita..... Lv		9.15PM Mo
	10.00AM We	Ar. Hutchinson..... Lv		12.01PM Mo
6.30AM We		Ar. Topeka..... Lv		3.00PM Mo
11.59AM We		Ar. Salina..... Lv	6.30AM Tu	

## MEMPHIS, HELENA, ALEXANDRIA, BATON ROUGE, NEW ORLEANS and LAKE CHARLES

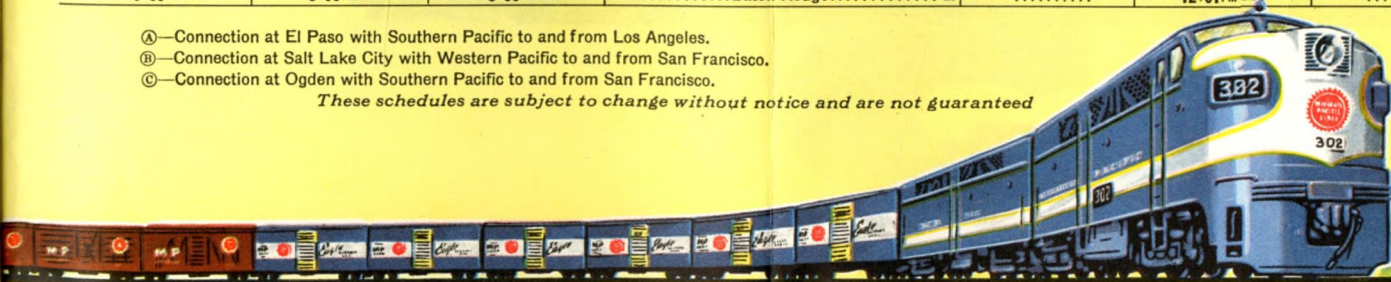
Train 63 and Connections	Train 361 and Connections	Train 369 and Connections		Train 370 and Connections	Train 360 and Connections	Trains 387-388 & Conn.
6.40PM Mo	7.00PM Mo	3.00AM Tu	Lv. St. Louis..... Ar	3.00AM We	11.30AM We	3.00AM We
8.00AM Tu	8.00AM Tu		Lv. Dupo (East St. Louis)..... Ar	7.00AM Tu		3.00AM We
		3.05AM We	Ar. Memphis..... Lv	4.00AM Tu		7.00AM Tu
7.30PM Tu	7.30PM Tu	8.45AM We	Ar. Helena..... Lv	5.00PM Mo		
5.30AM We	5.30AM We	4.30PM We	Ar. Alexandria..... Lv	2.00AM Mo		
7.00AM We	7.00AM Th	7.00AM Th	Ar. New Orleans..... Lv			
5.00PM We	5.00PM We	5.00PM Th	Ar. Lake Charles..... Lv			
			Ar. Baton Rouge..... Lv			

Ⓐ—Connection at El Paso with Southern Pacific to and from Los Angeles.

Ⓑ—Connection at Salt Lake City with Western Pacific to and from San Francisco.

Ⓒ—Connection at Ogden with Southern Pacific to and from San Francisco.

*These schedules are subject to change without notice and are not guaranteed*



1  
2  
3  
4

*We've clipped  
a DAY off  
West Coast delivery!*

**NOW!**

**4TH MORNING** Freight Delivery from St. Louis-Kansas City to San Francisco (2 schedules daily).

**4TH MORNING** Delivery from St. Louis-Memphis to Los Angeles.

**2ND MORNING** Delivery from St. Louis-Kansas City to Denver (24 hours faster).

*Call your Mo-Pac Freight Representative. He's a specialist in transportation!*



**MISSOURI  
PACIFIC**

J. M. HREBEC, *Gen. Freight Traffic Mgr.*  
1706 Missouri Pacific Bldg.  
St. Louis 3, Mo.



5