

# All Expense Tours Colorado Rockies



**Best  
Way  
West**



**MISSOURI  
PACIFIC  
LINES**

*"A Service Institution"*





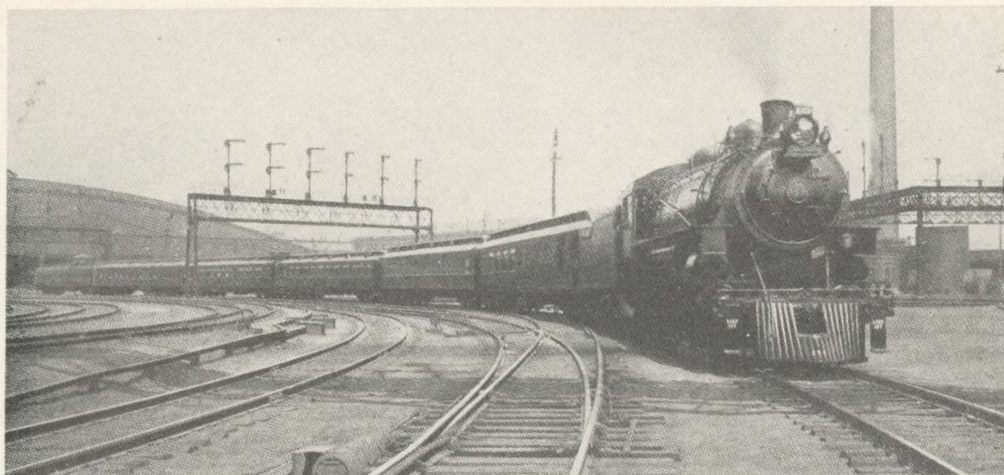
---

Missouri-Pacific  
Sunshine Tours  
to  
COLORADO  
Season 1928  
on the  
Personally Conducted  
and  
Go-As-You-Please-Plans



"A Service Institution"

---



*Colorado Sunshine Tour Leaving St. Louis Union Station*

## Foreword

SIGHT seeing in the Rockies without worry, fuss or bother! Travel that is carefree and wholly joyous, made so by freedom from the necessity of looking after details. That is the new service offered this year by the Missouri Pacific Lines.

Who has not set out on a sight seeing vacation without some misgiving as to the trouble entailed? Trouble in hunting up the best hotels, in deciding what are the most interesting points to visit, the most thrilling things to see. Even the most experienced travelers are not free from this ever present worry and strain.

It was with this thought in mind that Missouri Pacific passenger traffic officers, knowing the wide and continually growing interest in Colorado as a summer playground, arranged a plan that will permit tourists to enjoy this vacationland to the fullest by arranging for them these countless but important details.

The scheme will be found in the details of the Missouri Pacific Lines two plan of tours—"The Personally Conducted" and "The Go As You Please," described fully in the following pages. That these new systems of carefree travel will prove immensely popular and will be hailed with delight by the person



---

on his first trip west as well as by the seasoned tourist who counts that summer lost that does not include a few weeks of delight in the Rockies, will be evident by even a casual perusal of the plans.

Both systems have countless advantages. Details for both have been worked out with the most painstaking care. No point of interest has been omitted from the carefully arranged itineraries and neither have any visits been listed merely to fill in a gap. Countless travel experts have voted them the best it is possible to provide. From start to finish the very best in the way of accommodations have been arranged for and no item that will make for pleasure, education, interest or comfort has been omitted.

One of the features of the tour that will have a popular appeal is the fact that the tourist may tell at a glance the exact amount of money that the trip will cost. Guess work and "estimating" are done away with. One pays a certain sum and in exchange receives railroad transportation and sleeping car ticket, also tickets or coupons for meals at the various hotels and lodges listed, for sleeping quarter and for automobile and bus trips. Each step of each tour has been carefully arranged. Reservations at stop-over points are assured and the total cost of each tour is established, enabling the tourist to practically determine the complete cost of his vacation, before starting on the journey.

The personally conducted tours will appeal mostly to members of parties or to those who find their greatest pleasure in traveling with several congenial companions. Experienced passenger traffic representatives will be in charge of each "Personally Conducted Tour" and will look after all details.

To the individual or couples who find their greatest pleasure in "going it alone" the other plan will no doubt appeal the most. In each instance persons who take advantage of these tours will find a vacation in Colorado offering greater opportunities for an enjoyable, carefree outing than ever before, or possible any other time.

The train schedules shown on the following pages are those in effect at the time this booklet was published, and as there may be some slight variation during the summer season, tourists, in order to avoid any misunderstanding or inconvenience, are requested to ascertain from ticket agent when purchasing transportation the exact hour of departure of train from their station, as well as from St. Louis and Kansas City.

---

---

Personally Conducted  
All-Expense Tours

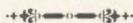
~ of ~

COLORADO





# Dates and Schedule



PERSONALLY conducted all expense tours will leave Memphis, Tenn.; New Orleans, Monroe and Lake Charles, La.; Hot Springs, El Dorado, Pine Bluff, Little Rock, Texarkana, Fort Smith and Helena, Ark., on Saturday, June 23rd, July 14th, August 11th and 25th, and Cairo, Ill., Omaha and Lincoln, Neb., Poplar Bluff, Joplin, St. Louis and Kansas City, Mo., the following days, or Sunday, June 24th, July 15th, August 12th and 26th. (It will also be noted that tourists from New Orleans desiring to travel via Kansas City may do so by leaving on Friday, June 22, July 13, August 10 and 24th.)



## VIA ST. LOUIS

<i>Saturday</i>	June 23rd	July 14th	August 11th	August 25th
	Tour A-1	Tour A-2	Tour A-3	Tour A-4

### *From Memphis-Helena*

Leave Memphis via Tennesseean,	11:20 P.M.
Leave Helena " "	9:45 P.M.
Arrive St. Louis " "	7:20 A.M. (Sunday)

### *From New Orleans and Lake Charles*

Leave New Orleans via Sunshine Special,	11:45 A.M.
Leave Lake Charles " " "	3:35 P.M.
Leave Monroe " " "	9:35 P.M.
Arrive St. Louis " " "	11:30 A.M. (Sunday)

### *From Hot Springs, Pine Bluff and Little Rock*

Leave Hot Springs via Hot Springs Special,	6:45 P.M.
Leave Pine Bluff " " " "	5:50 P.M.
Leave Little Rock " " " "	8:50 P.M.
Arrive St. Louis " " " "	7:15 A.M. (Sunday)

<i>Sunday</i>	June 24th	July 15th	August 12th	August 26th
	Tour A-1	Tour A-2	Tour A-3	Tour A-4

### *From Poplar Bluff*

Leave Poplar Bluff via Sunshine Special,	6:55 A.M.
Arrive St. Louis " " "	11:30 A.M.

### *From Cairo*

Leave Cairo, 6:00 A.M.; arrive St. Louis, 11:43 A.M.

---

## VIA KANSAS CITY

<i>Friday</i>	June 22nd Tour A-1	July 13th Tour A-2	August 10th Tour A-3	August 24th Tour A-4
---------------	-----------------------	-----------------------	-------------------------	-------------------------

### *From New Orleans*

Leave New Orleans via The Southerner, 11:25 P.M.  
Arrive Kansas City " " " 7:30 A.M. (Sunday)

<i>Saturday</i>	June 23rd Tour A-1	July 14th Tour A-2	August 11th Tour A-3	August 25th Tour A-4
-----------------	-----------------------	-----------------------	-------------------------	-------------------------

### *From Louisiana and Arkansas Points*

Leave Lake Charles via The Southerner, 12:10 A.M. (Sleeper ready for occupancy 9:30 P.M.)

Leave Monroe	via The Southerner,	9:00 A.M.
Leave Pine Bluff	" " "	1:20 P.M.
Leave Texarkana	" " "	11:00 A.M.
Leave El Dorado, Train Number 832,		10:00 A.M.
Leave Hot Springs " 220,		1:05 P.M.
Leave Little Rock via The Southerner,		2:55 P.M.
Leave Fort Smith " " "		8:17 P.M.
Arrive Kansas City " " "		7:30 A.M. (Sunday)

<i>Sunday</i>	June 24th Tour A-1	July 15th Tour A-2	August 12th Tour A-3	August 26th Tour A-4
---------------	-----------------------	-----------------------	-------------------------	-------------------------

### *From Coffeyville*

Leave Coffeyville via The Rainbow Special, 6:10 A.M.  
Arrive Kansas City " " " " 11:45 A.M.

### *From Joplin*

Leave Joplin, 4:00 P.M.; arrive Kansas City, 9:10 P.M.

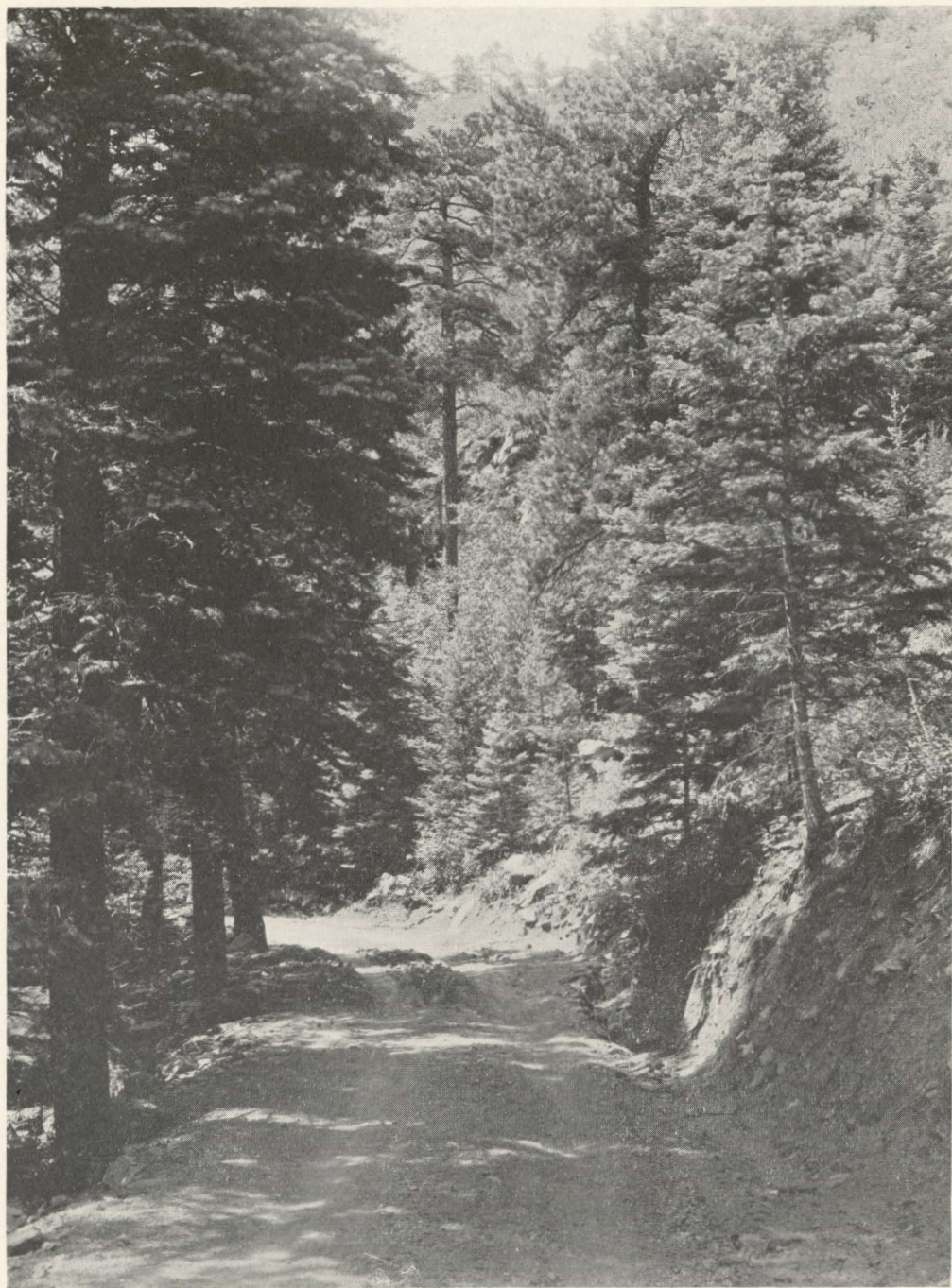
### *From Omaha*

Leave Omaha, 1:55 P.M.; arrive Kansas City, 8:00 P.M.

### *From Lincoln*

Leave Lincoln, 8:20 A.M.; arrive Kansas City, 3:55 P.M.





*Squirrel Creek Canyon—San Isabel National Forest*



---

## Start of the Tour Proper

*From St. Louis and Kansas City*

---

<b>Sunday</b>	June 24th Tour A-1	July 15th Tour A-2	August 12th Tour A-3	August 26th Tour A-4
---------------	-----------------------	-----------------------	-------------------------	-------------------------

Leave St. Louis via The Scenic Limited at 2:02 P.M., arriving Kansas City 9:30 P.M. Dinner served in diner.  
Leave Kansas City via The Scenic Limited, 9:55 P.M.

<b>Monday</b>	June 25th Tour A-1	July 16th Tour A-2	August 13th Tour A-3	August 27th Tour A-4
---------------	-----------------------	-----------------------	-------------------------	-------------------------

Breakfast on Missouri Pacific Diner; arrive Pueblo, 11:25 A.M. (M.T.)  
Transfer to Congress Hotel—our headquarters in Pueblo. Room with bath provided.  
Lunch at Congress Hotel, 12:00 P. M.  
1:00 P.M. Auto sightseeing trip around Pueblo, including Mineral Palace.  
Dinner at Congress Hotel, 6:30 P.M.  
Evening—Go as you please. Lodging at Congress Hotel.

<b>Tuesday</b>	June 26th Tour A-1	July 17th Tour A-2	August 14th Tour A-3	August 28th Tour A-4
----------------	-----------------------	-----------------------	-------------------------	-------------------------

Breakfast at Congress Hotel, 7:30 A.M.  
Leave Pueblo (Congress Hotel), 8:30 A.M. via San Isabel Transportation Company, for trip through San Isabel National Forest via City Park, Goodnight Ranch, Livesy, Siloam (from this point a view may be had of Pike's Peak, the Greenhorn Range of the Rocky Mountains, and the famous Spanish Peaks of the Sangre de Cristo Range), Wetmore, thru Hardscrabble Canyon, McKinzeys, Wixons Divide, Second Mace, Lunch and two hour stop at Bayer Li Lodge. Returning to Pueblo through Squirrel Creek Canyon and Beulah Valley, visiting the Soda Springs.  
Arrive Pueblo (Congress Hotel, for baggage, thence to Depot), 5:00 P.M.  
Leave Pueblo, D. & R. G. W. Railroad, 5:30 P.M.  
Arrive Colorado Springs, 6:45 P.M.  
Auto will meet train and transfer to Cliff House, headquarters in Manitou.  
Dinner at Cliff House, 7:30 P.M.  
Lodging at Cliff House—Room with bath.

<b>Wednesday</b>	June 27th Tour A-1	July 18th Tour A-2	August 15th Tour A-3	August 29th Tour A-4
------------------	-----------------------	-----------------------	-------------------------	-------------------------

Breakfast at Cliff House, 7:00 A.M.  
Leave Manitou, 8:00 A.M. for trip to Pike's Peak—one way via cog road, the other via automobile.  
Arrive Manitou, 12:30 P.M.; lunch at Cliff House.





*Harvest Time—Kansas Wheat Field*

Leave Manitou 1:30 P.M. for Little Circle auto trip, including Garden of the Gods, Cave of the Winds, South Cheyenne Canyon, and Seven Falls.

Arrive Cliff House, 5:00 P.M.; dinner at Cliff House.

Auto to railroad depot.

Leave Colorado Springs D. & R. G. W. Railroad, 7:10 P.M.

Arrive Denver, 9:40 P.M.

Transportation to Cosmopolitan Hotel—headquarters in Denver.

Lodging at Cosmopolitan Hotel—Room with bath.

<b>Thursday</b>	June 28th	July 19th	August 16th	August 30th
	Tour A-1	Tour A-2	Tour A-3	Tour A-4

Breakfast at Cosmopolitan Hotel, 7:30 A.M.

Leave Cosmopolitan Hotel, 9:00 A.M., for tour of Denver. Fifteen miles about the business section, showing the principal public buildings, parks, boulevards and residential portion, conceded to be among the very finest in the United States.

United States Mint

Civic Center

Public Library

State Capitol

Country Club

Cheesman Park

City Park Museum and Zoo

Post Office Building

Curtis St.—Movie Row

Municipal Auditorium

Electric Bldg.



---

Arrive Cosmopolitan Hotel, 11:30 A.M.  
Lunch at Cosmopolitan Hotel, 12:30 P.M.  
Afternoon—Go as you please.  
Dinner at Cosmopolitan Hotel, 7:00 P.M.  
Lodging at Cosmopolitan Hotel—Room with bath.

*Friday*    June 29th    July 20th    August 17th    August 31st  
                 Tour A-1    Tour A-2    Tour A-3    Tour A-4

Breakfast at Cosmopolitan Hotel, 7:00 A.M.  
Leave Denver via Rocky Mountain Transportation Co. at 7:45 A.M. via Big Thompson Canon for Estes Park Chalets, arriving at 12:30 P.M. for luncheon. Afternoon spent in leisure at hotel. Evening community singing and dancing. Dinner and lodging provided.

*Saturday*    June 30th    July 21st    August 18th    September 1st  
                 Tour A-1    Tour A-2    Tour A-3    Tour A-4

Breakfast at Estes Park Chalets.  
Automobile trip leaving hotel 9:30 A.M., arriving Bear Lake 11:00 A.M. Picnic lunch will be provided and the day spent in hiking in the Bear Lake and Lochvale country, returning to Estes Park Chalets for dinner.  
Evening—dancing.  
Lodging at Estes Park Chalets.

*Sunday*    July 1st    July 22nd    August 19th    September 2nd  
                 Tour A-1    Tour A-2    Tour A-3    Tour A-4

Breakfast at Estes Park Chalets.  
Morning may be spent in hiking or horseback riding up Lily Mountain, returning to the Chalets for luncheon.  
No set program for afternoon.  
Dinner and lodging at Estes Park Chalets.

*Monday*    July 2nd    July 23rd    August 20th    September 3rd  
                 Tour A-1    Tour A-2    Tour A-3    Tour A-4

Breakfast at Estes Park Chalets.  
Leave Estes Park Chalets at 8:00 A.M. for Grand Lake Lodge via Fall River Road, crossing the Continental Divide at Milner Pass, arriving at 12:30 P.M. for luncheon. Afternoon—hiking or horseback ride over the new skyline trail, returning to Grand Lake Lodge for dinner and lodging.

*Tuesday*    July 3rd    July 24th    August 21st    September 4th  
                 Tour A-1    Tour A-2    Tour A-3    Tour A-4

Breakfast at Grand Lake Lodge.  
Leave Grand Lake at 8:00 A.M. for Hot Springs Hotel, Idaho Springs, passing west portal of Moffat-Evans Tunnel and over Berthoud Pass across the Continental Divide, arriving at 12:30 P.M. for luncheon. Here the guest will find the famous Radio-Active Mineral Cave Baths. Afternoon—automobile trip to Central City and the old gold mining district of Colorado.  
Dinner and lodging at Hot Springs Hotel.

---





*Pike's Peak from Above Cascade*

**Wednesday**    July 4th    July 25th    August 22nd    September 5th  
Tour A-1    Tour A-2    Tour A-3    Tour A-4

Breakfast at Hot Springs Hotel.

Leave Idaho Springs 8:30 A.M., via Clear Creek Canyon, Denver Mountain Parks, Lookout Mountain, Buffalo Bill's Grave, and the famous Lariat Trail, turning at Rock Rest to Echo Lake via Mount Vernon Canon for luncheon at 1:00 P.M. Leave Echo Lake at 2:30 P.M. via Bear Creek Canon and Morrison, arriving in Denver (Hotel Albany) 6:00 P.M.

Dinner at Hotel Albany, 7:00 P.M.

Lodging at Hotel Albany—Room with bath.

**Thursday**    July 5th    July 26th    August 23rd    September 6th  
Tour A-1    Tour A-2    Tour A-3    Tour A-4

Breakfast at Hotel Albany, 7:00 A.M.

Auto leaves Hotel Albany, 9:00 A.M., for tour of Denver Mountain Parks, Turkey Creek—returning via Bear Creek Canyon.

Lunch at Hotel Albany, 12:00 P.M.

Transportation from Hotel Albany to station.

Leave Denver via The Scenic Limited, 1:30 P.M. (M.T.)

Dinner on diner.



---

<b>Friday</b>	July 6th Tour A-1	July 27th Tour A-2	August 24th Tour A-3	September 7th Tour A-4
---------------	----------------------	-----------------------	-------------------------	---------------------------

Breakfast on Missouri Pacific diner.

Arrive Kansas City via The Scenic Limited, 8:35 A.M. (C.T.)

*On arrival at Kansas City passengers destined to points east, north and south of that point will reach their home stations via the following schedule:*

### VIA ST. LOUIS

<b>Friday</b>	July 6th Tour A-1	July 27th Tour A-2	August 24th Tour A-3	September 7th Tour A-4
---------------	----------------------	-----------------------	-------------------------	---------------------------

Leave Kansas City via The Scenic Limited, 9:00 A. M., arriving St. Louis 4:18 P.M. Luncheon on diner.

#### *To Poplar Bluff and Louisiana Points*

Leave St. Louis via Sunshine Special 6:45 P. M., arriving Poplar Bluff 11:10 P.M. Friday—arriving Monroe 8:38 A.M., Lake Charles 2:45 P.M., New Orleans 6:45 P.M. Saturday.

#### *To Cairo*

Leave St. Louis, 6:04 P.M., arriving Cairo 11:30 P.M.

#### *To Memphis and Helena*

Leave St. Louis via The Tennessean, 11:30 P.M., arriving Memphis 7:30 A.M., Helena 8:45 A.M., Saturday.

#### *To Little Rock, Pine Bluff and Hot Springs*

Leave St. Louis via the Hot Springs Special 10:30 P.M., arriving Little Rock 7:40 A.M., Hot Springs 9:45 A.M., Pine Bluff 10:10 A. M. Saturday.

### VIA KANSAS CITY

<b>Friday</b>	July 6th Tour A-1	July 27th Tour A-2	August 24th Tour A-3	September 7th Tour A-4
---------------	----------------------	-----------------------	-------------------------	---------------------------

#### *To Arkansas Points*

Leave Kansas City via the Rainbow Special 4:30 P.M., arriving Fort Smith—Saturday, 2:35 A.M., Little Rock 7:30 A. M., Hot Springs 9:45 A.M., Texarkana 12:25 P.M., and El Dorado 1:20 P.M.

#### *To Louisiana Points*

Leave Kansas City via The Southerner, 11:30 P.M., arriving Pine Bluff—Saturday 4:30 P.M., Monroe 8:45 P.M., New Orleans—Sunday, 6:50 A.M., Lake Charles, 4:30 A.M.

#### *To Omaha and Lincoln*

Leave Kansas City 8:30 A.M., arriving Omaha 3:35 P.M., Lincoln 4:55 P.M.

#### *To Joplin*

Leave Kansas City 8:30 A.M., arriving Joplin 2:15 P.M.



# Cost of Personally Conducted All-Expense Tours A-1, A-2, A-3, A-4

FROM	1 Person Occupying Upper Berth		1 Person Occupying Lower Berth		2 Persons Occupying Lower Berth	
	With Rail Ticket	Without Rail Ticket	With Rail Ticket	Without Rail Ticket	(Each) With Rail Ticket	(Each) Without Rail Ticket
* Alexandria, La. ....	\$211.75	\$155.95	\$217.47	\$161.67	\$203.21	\$147.41
** Alexandria, La. ....	212.30	156.50	218.46	162.66	203.08	147.28
Archison, Kans. ....	166.20	138.35	168.76	140.91	162.38	134.53
Bismarck, Mo. ....	190.58	147.10	194.64	151.16	184.51	141.03
Cairo, Ill. ....	188.45	144.10	192.51	148.16	182.38	138.03
Carthage, Mo. ....	175.56	140.11	178.12	142.67	171.74	136.29
Claremore, Okla. ....	179.75	142.85	183.81	146.91	173.68	136.78
Coffeyville, Kans. ....	275.35	140.50	177.91	143.06	171.53	136.68
* Collinston, La. ....	208.40	154.10	213.96	159.66	200.08	145.78
** Collinston, La. ....	210.80	156.50	216.96	162.66	201.58	147.28
Durand, Kans. ....	172.45	138.65	175.01	141.21	168.63	134.83
* El Dorado, Ark. ....	202.21	150.96	206.80	155.55	195.36	144.11
Fort Smith, Ark. ....	183.50	143.45	187.72	147.67	177.21	137.16
Garnett, Kans. ....	170.00	138.35	172.56	140.91	166.18	134.53
** Helena, Ark. ....	202.90	150.70	208.62	156.42	194.36	142.16
* Hot Springs, Ark. ....	197.70	148.05	202.44	152.79	190.62	140.97
** Hot Springs, Ark. ....	202.60	152.55	208.46	158.41	193.83	143.78
** Hoxie, Ark. ....	198.45	150.10	204.01	155.66	190.13	141.78
Independence, Kans. ....	175.06	140.36	177.62	142.92	171.24	136.54
Jefferson City, Mo. ....	174.60	141.70	178.05	145.15	169.43	136.53
Joplin, Mo. ....	175.56	140.11	178.12	142.67	171.74	136.29
Kansas City, Mo. ....	163.20	135.35	165.76	137.91	159.38	131.53
* Lake Charles, La. ....	216.80	159.55	223.42	166.17	206.91	149.66
** Lake Charles, La. ....	227.10	165.25	234.76	172.91	215.63	153.78
Lincoln, Nebr. ....	165.70	137.85	168.26	140.41	161.88	134.03
* Little Rock, Ark. ....	193.80	146.20	198.39	150.79	186.95	139.35
** Little Rock, Ark. ....	200.75	150.70	206.47	156.42	192.21	142.16
* Memphis, Tenn. ....	200.15	150.10	205.71	155.66	191.83	141.78
** Monroe, La. ....	208.40	154.10	213.96	159.66	200.08	145.78
* Monroe, La. ....	212.30	156.50	218.46	162.66	203.08	147.28
Nevada, Mo. ....	172.56	139.51	175.12	142.07	168.74	135.69
** New Orleans, La. ....	223.60	157.75	229.76	163.91	214.38	148.53
** New Orleans, La. ....	227.85	162.00	234.01	168.16	218.63	152.78
* Newport, Ark. ....	200.15	150.10	205.71	155.66	191.83	141.78
Omaha, Nebr. ....	168.95	141.10	171.51	143.66	171.53	137.28
** Paragould, Ark. ....	199.50	150.10	205.06	155.66	191.18	141.78
* Pine Bluff, Ark. ....	199.60	149.55	204.72	154.67	191.96	141.91
** Pine Bluff, Ark. ....	201.35	151.30	207.21	157.16	192.58	142.53
Poplar Bluff, Mo. ....	196.51	148.16	200.57	152.22	190.44	142.09
St. Louis, Mo. ....	181.90	144.10	185.96	148.16	175.83	138.03
Sedalia, Mo. ....	169.80	139.55	173.03	142.78	164.97	134.72
* Texarkana, Ark. ....	199.06	150.96	203.65	155.55	192.21	144.11

\*Both directions via Coffeyville and Kansas City.

\*\*Both directions via St. Louis.





*Seven Falls—South Cheyenne Canyon*



---

Go-As-You-Please  
All-Expense Tours

~ of ~

COLORADO



---

## Tour B

### *Nine Day Tour from St. Louis and Kansas City of the Colorado Rockies*

Note: The schedule for this tour from points in Louisiana, Arkansas, Illinois, Memphis, Tenn., Kansas, Nebraska and Missouri, will be the same to and from St. Louis and Kansas City, as shown on pages 5-6 and 12, covering the personally conducted all-expense tour, except that the days shown therein will change according to the day of the week passengers leave their home station.

#### *First Day*

Leave St. Louis, Mo., Pac. Scenic Limited, 2:02 P.M. (C.T.). Dinner on diner.

Leave Kansas City, Mo. Pac. Scenic Limited, 9:55 P.M. (C. T.).

#### *Second Day*

Breakfast on Missouri Pacific diner. Arrive Pueblo at 11:25 A.M. (M. T.) Transfer to Congress Hotel, our headquarters at Pueblo—Room with bath provided.

Lunch at Congress Hotel, 12:00 P.M.

1:00 P.M. Auto sightseeing trip around Pueblo, including Mineral Palace.

Dinner at Congress Hotel, 6:30 P. M.

Evening—Go as you please. Lodging at Congress Hotel.

#### *Third Day*

Breakfast at Congress Hotel, 7:30 A.M.

Leave Pueblo, Congress Hotel, 8:30 A.M., via San Isabel Transportation Co. for trip through San Isabel National Forest via City Park, Goodnight Ranch, Livesy, Siloam, Wetmore, through Hardscrabble Canyon, McKinzeys, Wixon Divide, Second Mace, Lunch and two hour stop at Beaver Li Lodge. Returning to Pueblo through Squirrel Creek Canyon and Beulah Valley, visiting Soda Springs.

Arrive Pueblo, Congress Hotel, for baggage, thence to depot at 5:00 P.M.

Leave Pueblo (D. & R. G. W. R. R.), 5:30 P.M., arrive Colorado Springs, 6.45 P.M.

Auto to Acacia Hotel, our headquarters in Colorado Springs.

Dinner at Acacia Hotel, 7:30 P.M.

Lodging at Acacia Hotel—Room with bath.

#### *Fourth Day*

Breakfast at Acacia Hotel, 7:00 A.M.

Leave Colorado Springs at 8:00 A.M. for trip up Pike's Peak one way via Cog Road, other by automobile.

Arrive Colorado Springs, 12:30 P.M. Lunch at Acacia Hotel.

Leave Colorado Springs, 1:30 P.M., for Little Circle auto trip, including Garden of the Gods, Cave of the Winds, South Cheyenne Canyon and Seven Falls.

Arrive Acacia Hotel, 5:00 P.M.

Dinner at Acacia Hotel.

Auto to railroad depot.

Leave Colorado Springs D. & R. G. W. Railroad, 7:10 P.M.

Arrive Denver, 9:40 P.M.

Transfer to Albany Hotel.

Lodging at Albany Hotel—Room with bath.





*Sand Dunes—San Isabel National Forest*

### *Fifth Day*

Breakfast at Albany Hotel, 7:00 A.M.

Leave Denver at 7:45 A.M. via the Rocky Mountain Transportation Co. for Estes Park Chalets via Big Thompson Canyon, arriving 12:30 P.M. for luncheon. Afternoon hiking or horseback riding.

Dinner served at hotel.

Lodging at Estes Park Chalets.

Evening—Community singing and dancing.

### *Sixth Day*

Breakfast at Estes Park Chalets.

Leave Estes Park 8:00 A.M. for Grand Lake Lodge via Fall River Road, crossing the Continental Divide at Milner Pass, arriving Grand Lake Lodge 12:30 P.M. for luncheon. Afternoon—hiking, horseback riding and automobile trip to Grand Lake. Dinner and lodging at Grand Lake Lodge.

### *Seventh Day*

Breakfast at Grand Lake Lodge.

Leave Grand Lake 8:00 A.M., passing West Portal of the Moffat-Evans Tunnel, crossing the Continental Divide at Berthoud Pass and arriving Hot Springs Hotel, Idaho Springs, for luncheon.





*Royal Gorge—Grand Canyon of the Arkansas River*

Leave Idaho Springs 2:30 P.M. via Clear Creek Canyon, Denver Mountain Parks, Lookout Mountain, Buffalo Bill's Grave and the Lariat Trail, arriving in Denver at 5:00 P.M.

Dinner at Shirley-Savoy Hotel, 6:00 P.M.

Lodging at Shirley-Savoy Hotel—Room with bath.

### ***Eighth Day***

Breakfast at Shirley-Savoy Hotel, 7:30 A.M.

Leave Hotel 9:00 A.M. for Denver City auto trip.

Arrive Hotel at 10:30 A.M. Lunch at Shirley-Savoy Hotel.

Transfer Hotel to Depot.

Leave Denver via The Scenic Limited (M.T.), 1:30 P.M.

Dinner on Missouri Pacific diner.

### ***Ninth Day***

Breakfast on Missouri Pacific diner.

Arrive Kansas City via The Scenic Limited (C.T.), 8:35 A.M.

Leave Kansas City via The Scenic Limited, 9:00 A.M.

Luncheon on diner.

Arrive St. Louis via The Scenic Limited, 4:18 P.M.

The schedule of this tour for passengers destined to points beyond Kansas City and St. Louis will be the same as shown on page 12 covering the personally conducted tour, except that the days shown therein will vary according to the day of the week passengers arrive these points.



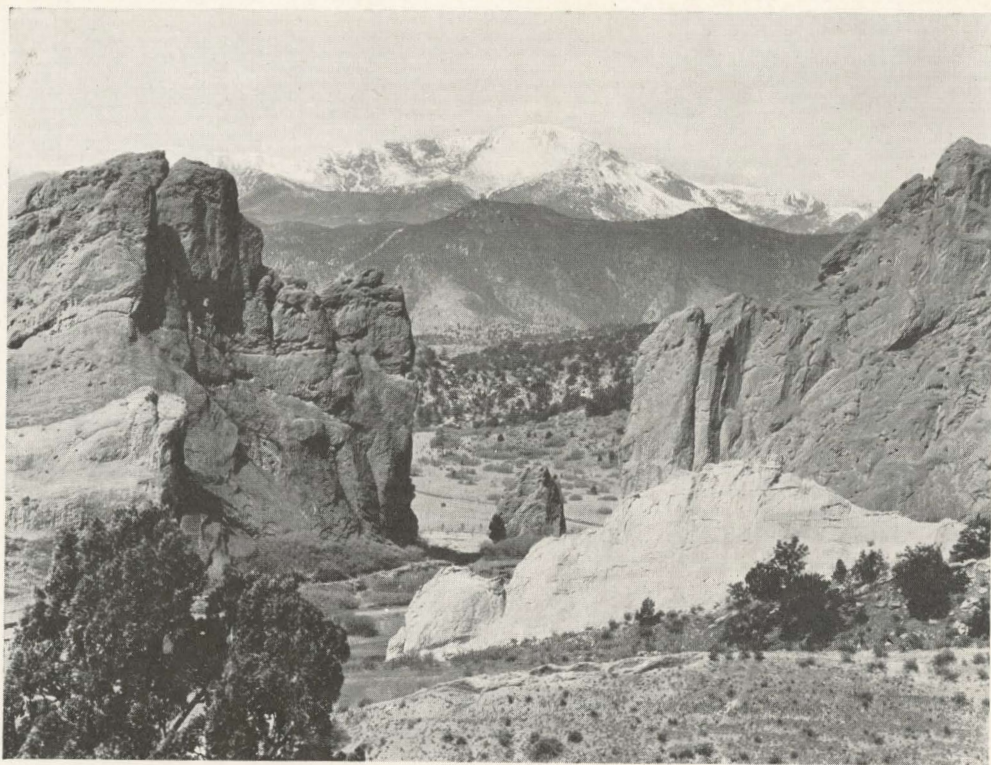
# Cost of Tour B

FROM	1 Person Occupying Upper Berth		1 Person Occupying Lower Berth		2 Persons Occupying Lower Berth	
	With Rail Ticket	Without Rail Ticket	With Rail Ticket	Without Rail Ticket	With Rail Ticket	(Each) Without Rail Ticket
** Alexandria, La.	\$174.60	\$118.80	\$180.32	\$124.52	\$166.06	\$110.26
** Alexandria, La.	175.15	119.35	181.31	125.51	165.93	110.13
Archison, Kans.	129.05	101.20	131.61	103.76	125.23	97.38
Bismarck, Mo.	153.43	109.95	157.49	114.01	147.36	103.88
Cairo, Ill.	151.30	106.95	155.36	111.01	145.23	100.88
Carthage, Mo.	138.41	102.96	140.97	105.52	134.59	99.14
Claremore, Okla.	142.60	105.70	146.66	109.76	136.53	99.63
Coffeyville, Kans.	138.20	103.35	140.76	105.91	134.38	99.53
* Collinston, La.	171.25	116.95	176.81	122.51	162.93	108.63
** Collinston, La.	173.65	119.35	179.81	125.51	164.43	110.13
Durand, Kans.	135.30	101.50	137.86	104.06	131.48	97.68
* El Dorado, Ark.	165.06	113.81	169.65	118.40	158.21	106.96
Fort Smith, Ark.	146.35	106.30	150.57	110.52	140.06	100.01
Garnett, Kans.	132.85	101.20	135.41	103.76	129.03	97.38
** Helena, Ark.	165.75	113.55	171.47	119.27	157.21	105.01
** Hot Springs, Ark.	160.55	110.90	165.29	115.64	153.47	103.82
** Hot Springs, Ark.	165.45	115.40	171.31	121.26	156.68	106.63
** Hoxie, Ark.	161.30	112.95	166.86	118.51	152.98	104.63
Independence, Kans.	137.91	103.21	140.47	105.77	134.09	99.39
Jefferson City, Mo.	137.45	104.55	140.90	108.00	132.28	99.38
Joplin, Mo.	138.41	102.96	140.97	105.52	134.59	99.14
Kansas City, Mo.	126.05	98.20	128.61	100.76	122.23	94.38
* Lake Charles, La.	179.65	122.40	186.27	129.02	169.76	112.51
** Lake Charles, La.	189.95	128.10	197.61	135.76	178.48	116.63
Lincoln, Nebr.	128.55	100.70	131.11	103.26	124.73	96.88
* Little Rock, Ark.	156.65	109.05	161.24	113.64	149.80	102.20
** Little Rock, Ark.	163.60	113.55	169.32	119.27	155.06	105.01
Memphis, Tenn.	163.00	112.95	168.56	118.51	154.68	104.63
* Monroe, La.	171.25	116.95	176.81	122.51	162.93	108.63
** Monroe, La.	175.15	119.35	181.31	125.51	165.93	110.13
Nevada, Mo.	135.41	102.36	137.97	104.92	131.59	98.54
* New Orleans, La.	186.45	120.60	192.61	126.76	177.23	111.38
** New Orleans, La.	190.70	124.85	196.86	131.01	181.48	115.63
* Newport, Ark.	163.00	112.95	168.56	118.51	154.68	104.63
Omaha, Nebr.	131.80	103.95	134.36	106.51	127.98	100.13
* Paragould, Ark.	162.15	112.95	167.91	118.51	154.03	104.63
** Pine Bluff, Ark.	162.45	112.40	167.57	117.52	154.81	104.76
** Pine Bluff, Ark.	164.20	114.15	170.06	120.01	155.43	105.38
Poplar Bluff, Mo.	159.36	111.01	163.42	115.07	153.29	104.94
St. Louis, Mo.	144.75	106.95	148.81	111.01	138.68	100.88
Sedalia, Mo.	132.65	102.40	135.88	105.63	127.82	97.57
* Texarkana, Ark.	161.91	113.81	166.50	118.40	155.06	106.96

\* Both directions via Coffeyville and Kansas City.

\*\* Both directions via St. Louis.





*Gateway to the Garden of the Gods*

## *Tour C*

### *A Ten-Day Tour from St. Louis and Kansas City of the Colorado Rockies*

Note: The schedule for this tour from points in Louisiana, Arkansas, Illinois, Memphis, Tenn., Kansas, Nebraska and Missouri, will be the same to and from St. Louis and Kansas City as shown on pages 5-6 and 12, covering the personally conducted all-expense tour, except that the days shown therein will change according to the day of the week passengers leave their home station.

#### *First Day*

Leave St. Louis, Mo. Pac. Scenic Limited, 2:02 P.M. (C. T.).

Dinner on diner.

Leave Kansas City, Mo. Pac. Scenic Limited, 9:55 P.M. (C. T.).

#### *Second Day*

Breakfast on Missouri Pacific diner.

Arrive Pueblo, 11:25 A.M. (M. T.).

Transfer to Congress Hotel, our headquarters at Pueblo—Room with bath provided.



---

Lunch at Congress Hotel, 12:00 P.M.  
1:00 P.M. Auto sightseeing trip around Pueblo, including Mineral Palace.  
Dinner at Congress Hotel, 6:30 P.M.  
Evening—Go as you please.  
Lodging at Congress Hotel—Room with bath.

### *Third Day*

Breakfast at Congress Hotel.  
Leave Pueblo, Congress Hotel at 8:30 A.M., via San Isabel Transportation Company for trip through San Isabel National Forest via City Park, Goodnight Ranch, Livesy, Siloam (from this point a view may be had of Pike's Peak, the Greenhorn Range of the Rocky Mountains and the famous Spanish Peaks of the Sangre de Cristo Range), Wetmore, through Hardscrabble Canyon, McKinzey's, Wixons Divide, Second Mace, Lunch and two hours' stop at Bayer Li Lodge. Returning to Pueblo through Squirrel Creek Canyon, Beulah Valley, visiting the Soda Springs.  
Arrive Pueblo, Congress Hotel, for baggage, thence depot, 5:00 P.M.  
Leave Pueblo, D. & R. G. W. Railroad, 5:30 P.M.  
Arrive Colorado Springs, 6:45 P.M., auto to Acacia Hotel, Headquarters in Colorado Springs.  
Dinner at Acacia Hotel.  
Lodging at Acacia Hotel—Room with bath.

### *Fourth Day*

Breakfast at Acacia Hotel, 7:00 A.M.  
Leave Colorado Springs at 8:00 A.M. for trip up Pike's Peak, one way via Cog Road, other via Automobile.  
Arrive Colorado Springs, 12:30 P.M.  
Lunch at Acacia Hotel.  
Leave Colorado Springs 1:30 P.M. for Little Circle auto trip, including Garden of the Gods, Cave of the Winds, South Cheyenne Canyon and Seven Falls.  
Arrive Acacia Hotel, 5:00 P.M.  
Dinner at Acacia Hotel.  
Auto to Railroad Depot.  
Leave Colorado Springs, D. & R. G. W. Railroad, 7:10 P.M.  
Arrive Denver, 9:40 P.M.  
Transfer to Hotel.  
Lodging at Brown Palace Hotel—Room with bath.

### *Fifth Day*

Breakfast at Brown Palace Hotel, 7:00 A.M.  
Leave Denver, 7:45 A.M., via Rocky Mountain Transportation Co., via Big Thompson Canon for Estes Park, arriving 12:30 P.M. for luncheon.  
Afternoon spent in leisure at hotel. Dinner at hotel.  
Evening—Community singing and dancing.  
Lodging at Estes Park Chalets.

### *Sixth Day*

Breakfast Estes Park Chalets.  
Leave Estes Park 9:30 A.M. for Bear Lake. Picnic lunch provided and the day spent in the Bear Lake and Lochvale country. Arrive Estes Park, 5:00 P.M. Dinner and lodging at Estes Park Chalets.

---



---

### *Seventh Day*

Breakfast at Estes Park Chalets.

Leave Estes Park 8:00 A.M. for Grand Lake Lodge via Fall River Road, crossing the Continental Divide at Milner Pass, arriving at Grand Lake Lodge at 12:30 P. M. for luncheon.

Afternoon hiking or horseback riding over the new skyline trail.

Dinner and lodging at Grand Lake Lodge.

### *Eighth Day*

Breakfast at Grand Lake Lodge.

Leave Grand Lake 8:00 A.M. for Idaho Springs, passing west Portal of Moffat-Evans Tunnel and over Berthoud Pass, across the Continental Divide, arriving 12:30 P.M.

Lunch at Hot Springs Hotel.

Leave Idaho Springs 2:30 P.M., via Clear Creek Canon, Denver Mountain Parks, Lookout Mountain, Buffalo Bill's Grave, arriving Denver at 5:00 P.M.

Dinner and lodging at Albany Hotel—Room with bath.

### *Ninth Day*

Breakfast at Albany Hotel, 7:00 A.M.

Leave Albany Hotel 9:00 A.M. for Denver City trip.

Fifteen miles about the business section, parks, boulevards and residential district, conceded to be among the very finest in the United States.,

City Park Museum and Zoo

Post Office Building

Curtis Street Movie Row

Municipal Auditorium

Electric Building

State Capitol

Country Club

Cheesman Park

United States Mint

Civic Center

Public Library

Arrive Hotel 11:30 A.M.

Lunch at Albany Hotel, 12:00 P.M.

Transfer Hotel to Depot.

Leave Denver via The Scenic Limited, 1:30 P.M. (M.T.).

Dinner on Missouri Pacific diner.

### *Tenth Day*

Breakfast on Missouri Pacific diner.

Arrive Kansas City via The Scenic Limited, 8:35 A.M. (C.T.).

Luncheon on diner.

Arrive St. Louis via The Scenic Limited, 4:18 P.M.

The schedule of this tour for passengers destined to points beyond Kansas City and St. Louis will be the same as shown on page 12 covering the personally conducted tour, except that the days shown therein will vary according to the day of the week passengers arrive these points.



# Cost of Tour C

FROM	1 Person Occupying Upper Berth		1 Person Occupying Lower Berth		2 Persons Occupying Lower Berth	
	With Rail Ticket	Without Rail Ticket	With Rail Ticket	Without Rail Ticket	With Rail Ticket	(Each) Without Rail Ticket
** Alexandria, La.	\$186.35	\$130.55	\$192.07	\$136.27	\$177.81	\$122.01
** Alexandria, La.	186.90	131.10	193.06	137.26	177.68	121.88
Atchison, Kans.	140.80	112.95	143.36	115.51	136.98	109.13
Bismarck, Mo.	165.18	121.70	169.24	125.76	159.11	115.63
Cairo, Ill.	163.05	118.70	167.11	122.76	156.98	112.63
Carthage, Mo.	150.16	114.71	152.72	117.27	146.34	110.89
Claremore, Okla.	154.35	117.45	158.41	121.51	148.28	111.38
Coffeyville, Kans.	149.95	115.10	152.51	117.66	146.13	111.28
* Collinston, La.	183.00	128.70	188.56	134.26	174.68	120.38
* Collinston, La.	185.40	131.10	191.56	137.26	176.18	121.88
Durand, Kans.	147.05	113.25	149.61	115.81	143.23	109.43
* El Dorado, Ark.	176.81	125.56	181.40	130.15	169.96	118.71
Fort Smith, Ark.	158.10	118.05	162.32	122.27	151.81	111.76
Garnett, Kans.	144.60	112.95	147.16	115.51	140.78	109.13
** Helena, Ark.	177.50	125.30	183.22	131.02	168.96	116.76
** Hot Springs, Ark.	172.30	122.65	177.04	127.39	165.22	115.57
** Hot Springs, Ark.	177.20	127.15	183.06	133.01	168.43	118.38
** Hoxie, Ark.	173.05	124.70	178.61	130.26	164.73	116.38
Independence, Kans.	149.66	114.96	152.22	117.52	145.84	111.14
Jefferson City, Mo.	149.20	116.30	152.65	119.75	144.03	111.13
Joplin, Mo.	150.16	114.71	152.72	117.27	146.34	110.89
Kansas City, Mo.	137.80	109.95	140.36	112.51	133.98	106.13
* Lake Charles, La.	191.40	134.15	198.02	140.77	181.51	124.26
Lincoln, Nebr.	201.70	139.85	209.36	147.51	190.23	128.38
Little Rock, Ark.	140.30	112.45	142.86	115.01	136.48	108.63
* Little Rock, Ark.	168.40	120.80	172.99	125.39	161.55	113.95
** Memphis, Tenn.	175.35	125.30	181.07	131.02	166.81	116.76
* Monroe, La.	174.75	124.70	180.31	130.26	166.43	116.38
** Monroe, La.	183.00	128.70	188.56	134.26	174.68	120.38
Nevada, Mo.	186.90	131.10	193.06	137.26	177.68	121.88
New Orleans, La.	147.16	114.11	149.72	116.67	143.34	110.29
* New Orleans, La.	198.20	132.35	204.36	138.51	188.98	123.13
** New Orleans, La.	202.45	136.60	208.61	142.76	193.23	127.38
* Newport, Ark.	174.75	124.70	180.31	130.26	166.43	116.38
Omaha, Nebr.	143.55	115.70	146.11	118.26	139.73	111.88
* Paragould, Ark.	174.10	124.70	179.66	130.26	165.78	116.38
* Pine Bluff, Ark.	174.20	124.15	179.32	129.27	166.56	116.51
* Pine Bluff, Ark.	175.95	125.90	181.81	131.76	167.18	117.13
Poplar Bluff, Mo.	171.11	122.76	175.17	126.82	165.04	116.69
St. Louis, Mo.	156.50	118.70	160.56	122.76	150.43	112.63
Sedalia, Mo.	144.40	114.15	147.63	117.38	139.57	109.32
* Texarkana, Ark.	173.66	125.56	178.25	130.15	166.81	118.71

\* Both directions via Coffeyville and Kansas City.

\*\* Both directions via St. Louis.





*Horse Back Party—Rocky Mountain National Park*



---

## Tour D

### *A Thirteen-Day Tour from St. Louis and Kansas City of the Colorado Rockies*

Note: The schedule for this tour from points in Louisiana, Arkansas, Illinois, Memphis, Tenn., Kansas, Nebraska and Missouri, will be the same to and from St. Louis and Kansas City as shown on pages 5-6 and 12, covering the personally conducted all-expense tour, except that the days shown therein will change according to the day of the week passengers leave their home station.

#### *First Day*

Leave St. Louis, Mo. Pac. Scenic Limited, 2:02 P.M. (C.T.).

Dinner on diner.

Leave Kansas City, Mo. Pac. Scenic Limited, 9:55 P.M. (C.T.).

#### *Second Day*

Breakfast on Missouri Pacific diner.

Arrive Pueblo, 11:25 A.M. (M.T.)

Transfer to Congress Hotel—our headquarters in Pueblo. Room with bath provided.

Lunch at Congress Hotel, 12:00 P.M.

1:00 P.M. Auto sightseeing trip around Pueblo, including Mineral Palace.

Dinner at Congress Hotel, 6:30 P.M.

Evening—Go as you please.

Lodging at Congress Hotel.

#### *Third Day*

Breakfast at Congress Hotel, 7:30 A.M.

Leave Pueblo (Congress Hotel), 8:30 A.M., via San Isabel Transportation Company for trip through San Isabel National Forest via City Park, Goodnight Ranch, Livesy, Siloam (from this point a view may be had of Pike's Peak, the Greenhorn Range of the Rocky Mountains, and the famous Spanish Peaks of the Sangre de Cristo Range), Wetmore, through Hardscrabble Canyon, McKinzeys, Wixons Divide, Second Mace, Lunch and two hour stop at Baver Li Lodge. Returning to Pueblo through Squirrel Creek Canyon and Beulah Valley, visiting the Soda Springs.

Arrive Pueblo (Congress Hotel, for baggage, thence to depot), 5:00 P.M.

Leave Pueblo, D. & R. G. W. Railroad, 5:30 P.M.

Arrive Colorado Springs, 6:45 P.M.

Auto will meet train and transfer to Cliff House, headquarters in Manitou.

Dinner at Cliff House, 7:30 P.M.

Lodging at Cliff House—Room with bath.

#### *Fourth Day*

Breakfast at Cliff House, 7:00 A.M.

Leave Manitou 8:00 A. M. for Pike's Peak, one way via Cog Road, other by automobile.





*Estes Park—Altitude 6500 Feet*

### *Fourth Day (Cont'd.)*

Arrive Manitou, 12:30 P.M.                      Lunch at Cliff House.  
 Leave Manitou 1:30 P.M. for Little Circle auto trip, including Garden of  
 the Gods, Cave of the Winds, South Cheyenne Canyon, and Seven Falls.  
 Arrive Cliff House, 5:00 P.M.                      Dinner at Cliff House.  
 Auto to Railroad Depot.  
 Leave Colorado Springs, D. & R. G. W. Railroad, 7:10 P.M.  
 Arrive Denver, 9:40 P.M.  
 Transportation to Cosmopolitan Hotel, headquarters in Denver. Lodging  
 at Cosmopolitan Hotel—Room with bath.

### *Fifth Day*

Breakfast at Cosmopolitan Hotel, 7:30 A.M.  
 Leave Cosmopolitan Hotel, 9:00 A.M. for Denver City trip.  
 Fifteen miles about the business section, showing the principal public build-  
 ings, parks, boulevards and residential portion, conceded to be among the  
 very finest in the United States.

City Park Museum and Zoo	Civic Center
Post Office Building	Public Library
Curtis St.—Movie Row	State Capitol
Municipal Auditorium	Country Club
Electric Building	Cheesman Park
United States Mint	



---

### *Fifth Day (Cont'd.)*

Arrive Cosmopolitan Hotel, 11:30 A.M.

Lunch at Cosmopolitan Hotel, 12:30 P.M.

Afternoon—Go as you please. Dinner at Cosmopolitan Hotel, 7:00 P.M.

Lodging at Cosmopolitan Hotel—Room with bath.

### *Sixth Day*

Breakfast at Cosmopolitan Hotel, 7:00 A.M.

Leave Denver via Rocky Mountain Transportation Co. at 7:45 A.M. via Big Thompson Canon for Estes Park Chalets, arriving at 12:30 P.M. for luncheon. Afternoon spent in leisure at hotel. Evening community singing and dancing. Dinner and lodging provided.

### *Seventh Day*

Breakfast at Estes Park Chalets.

Automobile trip leaving hotel 9:30 A.M., arriving Bear Lake 11:00 A.M.

Picnic lunch will be provided and the day spent in hiking in the Bear Lake and Lochvale country, returning to Estes Park Chalets for dinner.

Evening—Dancing.

Lodging at Estes Park Chalets.

### *Eighth Day*

Breakfast at Estes Park Chalets.

Morning may be spent in hiking or horseback riding up Lily Mountain, returning to the Chalets for luncheon.

No set program for afternoon.

Dinner and lodging at hotel.

### *Ninth Day*

Breakfast at Estes Park Chalets.

Leave Estes Park Chalets at 8:00 A.M. for Grand Lake Lodge via Fall River Road, crossing the Continental Divide at Milner Pass, arriving at 12:30 P.M. for luncheon. Afternoon hiking or horseback ride over the new skyline trail, returning to Grand Lake Lodge for dinner and lodging.

### *Tenth Day*

Breakfast at Grand Lake Lodge.

Leave Grand Lake at 8:00 A.M. for Hot Springs Hotel, Idaho Springs, passing west portal of Moffat-Evans Tunnel and over Berthoud Pass across the Continental Divide, arriving at 12:30 P.M. for luncheon. Here the guest will find the famous Radio-Active Mineral Cave Baths. Afternoon, automobile trip to Central City and the old gold mining district of Colorado.

Dinner and lodging at Hot Springs Hotel.

### *Eleventh Day*

Breakfast at Hot Springs Hotel.

Leave Idaho Springs 8:30 A.M., via Clear Creek Canyon, Denver Mountain Parks, Lookout Mountain, Buffalo Bill's Grave, and the famous Lariat Trail, turning at Rock Rest to Echo Lake via Mount Vernon Canon for luncheon at 1:00 P.M. Leave Echo Lake at 2:30 P.M. via Bear Creek Canyon and Morrison, arriving in Denver (Hotel Albany) 6:00 P.M.

Dinner at Hotel Albany, 7:00 P. M.

Lodging at Hotel Albany—Room with bath.





*Helen Hunt Falls—North Cheyenne Canon*

### *Twelfth Day*

Breakfast at Hotel Albany, 7:00 A.M.

Auto tour of Denver Mountain Parks. Auto leaves Hotel Albany 9:00 A.M. for the Turkey Creek trip—returning through Bear Creek Canyon.

Lunch at Hotel Albany, 12:00 Noon.

Transportation from Hotel Albany to station.

Leave Denver via The Scenic Limited, 1:30 P.M. (M.T.).

Dinner on diner.

### *Thirteenth Day*

Breakfast on Missouri Pacific diner.

Arrive Kansas City via The Scenic Limited, 8:35 A.M. (C.T.).

Luncheon on diner.

Arrive St. Louis via The Scenic Limited, 4:18 P.M.

The schedule of this tour for passengers destined to points beyond Kansas City and St. Louis will be the same as shown on page 12 covering the personally conducted tour, except that the days shown therein will vary according to the day of the week passengers arrive these points.



# Cost of Personally Conducted All-Expense Tour D

FROM	1 Person Occupying Upper Berth		1 Person Occupying Lower Berth		2 Persons Occupying Lower Berth	
	With Rail Ticket	Without Rail Ticket	With Rail Ticket	Without Rail Ticket	(Each) With Rail Ticket	(Each) Without Rail Ticket
* Alexandria, La.	\$211.75	\$155.95	\$217.47	\$161.67	\$203.21	\$147.41
** Alexandria, La.	212.30	156.50	218.46	162.66	203.08	147.28
Atchison, Kans.	166.20	138.35	168.76	140.91	162.38	134.53
Bismarck, Mo.	190.58	147.10	194.64	151.16	184.51	141.03
Cairo, Ill.	188.45	144.10	192.51	148.16	182.38	138.03
Carthage, Mo.	175.56	140.11	178.12	142.67	171.74	136.29
Claremore, Okla.	179.75	142.85	183.81	146.91	173.68	136.78
Coffeyville, Kans.	175.35	140.50	177.91	143.06	171.53	136.68
* Collinston, La.	208.40	154.10	213.96	159.66	200.08	145.78
** Collinston, La.	210.80	156.50	216.96	162.66	201.58	147.28
Durand, Kans.	172.45	138.65	175.01	141.21	168.63	134.83
* El Dorado, Ark.	202.21	150.96	206.80	155.55	195.36	144.11
Fort Smith, Ark.	183.50	143.45	187.72	147.67	177.21	137.16
Garnett, Kans.	170.00	138.35	172.56	140.91	166.18	134.53
** Helena, Ark.	202.90	150.70	208.62	156.42	194.36	142.16
** Hot Springs, Ark.	197.70	148.05	202.44	152.79	190.62	140.97
** Hot Springs, Ark.	202.60	152.55	208.46	158.41	193.83	143.78
** Hoxie, Ark.	198.45	150.10	204.01	155.66	190.13	141.78
Independence, Kans.	175.06	140.36	177.62	142.92	171.24	136.54
Jefferson City, Mo.	174.60	141.70	178.05	145.15	169.43	136.53
Joplin, Mo.	175.56	140.11	178.12	142.67	171.74	136.29
Kansas City, Mo.	163.20	135.35	165.76	137.91	159.38	131.53
* Lake Charles, La.	216.80	159.55	223.42	166.17	206.91	149.66
* Lake Charles, La.	227.10	165.25	234.76	172.91	215.63	153.78
Lincoln, Nebr.	165.70	137.85	168.26	140.41	161.88	134.03
* Little Rock, Ark.	193.80	146.20	198.39	150.79	186.95	139.35
* Little Rock, Ark.	200.75	150.70	206.47	156.42	192.21	142.16
** Memphis, Tenn.	200.15	150.10	205.71	155.66	191.83	141.78
* Monroe, La.	208.40	154.10	213.96	159.66	200.08	145.78
Monroe, La.	212.30	156.50	218.46	162.66	203.08	147.28
Nevada, Mo.	172.56	139.51	175.12	142.07	168.74	135.69
* New Orleans, La.	223.60	157.75	229.76	163.91	214.38	148.53
* New Orleans, La.	227.85	162.00	234.01	168.16	218.63	152.78
* Newport, Ark.	200.15	150.10	205.71	155.66	191.83	141.78
Omaha, Nebr.	168.95	141.10	171.51	143.66	165.13	137.28
** Paragould, Ark.	199.50	150.10	205.06	155.66	191.18	141.78
* Pine Bluff, Ark.	199.60	149.55	204.72	154.67	191.96	141.91
** Pine Bluff, Ark.	201.35	151.30	207.21	157.16	192.58	142.53
Poplar Bluff, Mo.	196.51	148.16	200.57	152.22	190.44	142.09
St. Louis, Mo.	181.90	144.10	185.96	148.16	175.83	138.03
Sedalia, Mo.	169.80	139.55	173.03	142.78	164.97	134.72
* Texarkana, Ark.	199.06	150.96	203.65	155.55	192.21	144.11

\*Both directions via Coffeyville and Kansas City.

\*\*Both directions via St. Louis.



---

## General Information

### *What the Cost Includes*

As stated in the "Foreword" one of the primary purposes of these all expense tours is to enable the Summer traveler to estimate what his trip will cost before starting on his journey. The cost of these tours therefore covers railroad and pullman transportation for the round trip, sightseeing tours enumerated, automobile trips where indicated, all meals while en route in dining cars, and at hotels, transfers, etc. In other words, every necessary expense is covered. No overhead charge of any character is provided in computing the charges for these tours, passengers only paying for the actual accommodations received. Your attention is directed to the fact that while horseback rides are mentioned at times under the various tours, this is shown only as a matter of information for those desiring to engage in this sport, and the cost is not included in the price of the all-expense tour ticket.

### *Children's Fares*

Children twelve years of age or over will be charged full fare. Rates for children under twelve years of age will depend on hotel accommodations desired and will be furnished on request.

### *Cost Varies According to Pullman Accommodation Provided*

You perhaps have observed that the cost of these tours varies according to the pullman accommodation used and the individual cost is less if two persons occupy a lower or if two or more persons occupy one drawing room. Rates covering the occupancy of a section, drawing room or compartment will depend upon the number of occupants, and will be furnished upon request.

### *Hotel Accommodations*

The cost of the tour provides room with bath, two persons occupying one room. If superior accommodations are desired passengers will arrange direct with the hotel—paying the difference according to the accommodation furnished.

### *Purchase Railroad Transportation From Home Station*

Passengers originating at points from which the "through all-expense rates" are not quoted should purchase through round trip Summer tourist tickets from starting point to Denver, Colorado, as in that way you will obtain the full benefit of the low round trip tourist railroad fare. You can easily determine the complete cost of the tour by adding the cost of the railroad ticket to the "cost of the tour without railroad fare" quoted from the station nearest your starting point.

### *Baggage Arrangements*

You will find trunks unnecessary on these tours. Suit Cases or traveling bags large enough to carry sufficient clothes can be easily carried anywhere throughout the tour. Members of the tour may check 150 pounds of baggage free to Denver, Colorado, and return on each adult ticket. The free allowance on baggage through Rocky Mountain Park is twenty pounds. Those desiring to take trunks may do so and they will be stored free of charge at Denver. If trunks are wanted in the Rocky Mountain Park special arrangements can be made with the Rocky Mountain Park Transportation Company.





*Cog Road to Pike's Peak—Early Summer*



---

## *Coupon Books*

A special book of coupons covering meals at hotels and in dining cars while en route, hotel accommodations, sightseeing tours and other features will be furnished each tourist traveler.

## *Pullman Accommodations*

Rates quoted cover pullman accommodations specified. All passengers will join the tour proper at the two main starting points, which are St. Louis and Kansas City, from which points pullman accommodations will be provided to Pueblo, Colorado, seats in pullman or parlor cars from Pueblo to Colorado Springs, Colorado Springs to Denver; also, upper or lower berth (depending upon accommodation purchased) from Denver to Kansas City or St. Louis.

Passengers from all other points from which through rates are quoted will be furnished accommodations to St. Louis or Kansas City as follows:

Where day service is involved they will be furnished seats in pullman or parlor cars when such service is available, otherwise regular coach service will be provided.

Where night service is involved they will be furnished upper or lower berth (depending upon accommodation purchased) to St. Louis or Kansas City and similar accommodations for the balance of the tour.

Where day and night service is involved they will be furnished seats in parlor cars for day trip and upper or lower berth (depending upon accommodation purchased) to St. Louis or Kansas City for night trip, and similar accommodations for the balance of the tour.

## *Stopover Privilege*

Railroad tickets are good until October 31st, 1928. Stopovers are permitted at all points en route. By making arrangement at time of booking passenger may leave a tour at any stopping point and join any subsequent tour for the completion of itinerary, or may travel independently from stopover point.

## *Escort With Tour*

Each personally conducted tour will be under the escort of an experienced railroad representative who devotes his entire time and attention to the comforts and welfare of our passengers, relieving the individual of the usual travel cares.

## *Meals*

All meals while en route will be served in dining cars and in hotels at stopover points as indicated in the itinerary.

Passengers from points beyond St. Louis or Kansas City will be free to go as they please from time of arrival until time of departure of the tour at St. Louis at 2:02 P.M. and Kansas City at 9:55 P.M. and will arrange for their own meals during stopovers at these points.

## *Wearing Apparel*

While these tours are being made in the Summer months, it is well to remember that we will be in the Colorado Rockies, and the nights in the mountains, and the auto trips through Rocky Mountain National Park make desirable medium weight and even heavy clothing, topcoats or lightweight overcoats, sweaters, and the like. Traveling and hiking clothing such as knickers, etc., are

---





*Devil's Curve—Rocky Mountain National Park*

worn by both men and women through the mountains. Colored glasses will be a great help to any tourist. After the daily tours, especially during the dinner hour and evening dance a change will be desired from the travel and hiking apparel.

### *Descriptive Booklets*

This booklet concerning the Missouri Pacific Sunshine Tour necessarily cannot describe all the points of scenic interest in Colorado. For those desiring additional picture booklets we will gladly mail free of charge any of the following tour publications:

- Cool, Crisp, Colorful Colorado.
- San Isabel National Forest.
- Rocky Mountain National Park.
- Yellowstone National Park.
- Zion National Park-Bryce Canon.
- California.
- U. S. Folder Map.

### *How to Join the Tours*

Bookings should be arranged through Mr. A. D. Bell, Passenger Traffic Manager, Missouri Pacific Railroad, 1650 Railway Exchange Building, St. Louis, Mo., or any Missouri Pacific Representative listed on pages 42 and 43.



---

## Cool, Crisp, Colorful Colorado

Lofty ranges from whose summits are born the rivers that reach three oceans and traverse two-thirds of the continent; deep cut canons in whose granite depths flowers and shrubs make bowers of surpassing beauty; shouldering summits and grassy plateaus in whose evergreen forests roam the elk, the bear and puma; crystal rivers and streams teeming with fighting trout; great cities, delightful resorts; climate and scenery beyond compare—this is Colorado.

These visions are not of some distant land. Colorado is close at hand, easy to reach, easy to enjoy. It requires no long and wearisome pilgrimage from the plains and the Mississippi Valley. Leaving the humid heat of the lowland behind, the traveler steps aboard a Missouri Pacific Lines train. Without realizing it, the pathway to the West is one continuous rise into a cooler, drier atmosphere. Close-compacted farms are left behind, replaced by level plains. The air has tonic qualities; the sun has a new brightness.

And then, across the West, out of the far distance, rises an amethyst wall, with crown of pure white—the Rocky Mountains. To the patriotic American the first sight of the mountains brings a thrill of pride. These are unsurpassed in grandeur. They have sublime aspects and charm, characteristic of them alone. No description with pen or brush can convey a complete picture of the spirit and enchantment of Colorado. There are many beautiful paintings in existence; they but faintly breathe the soul of the mountains. The subject is too majestic, changeable and subtle to be grasped and put upon canvas even by the master who senses their very essence. Changing moods, the wonderful play of light and shade, the delicate coloring, the music of the trees and streams, the brooding silence of the mountains eludes the artistic genius. The Rockies are one of the great mysteries of Nature and will always cast a spell upon man. Like the ocean, they remain unconquerable, compelling.

### *Pueblo*

With the mountains still in the distance, the train rolls through green fields and groves into Pueblo, the second largest city in the State.

A stop in Pueblo is made to begin your acquaintance with the State by visiting the Mineral Palace, the great steel plants, and the beautiful residence district. The city is an important industrial center. Considerable of the steel rails used on western railways are produced here. It lies 4,672 feet above sea level, in a valley at the junction of the prairies with the foothills of the Rockies.

## *San Isabel National Forest*

The San Isabel National Forest in Colorado has, with comparative recency, become recognized as one of the most picturesque and beautiful virgin playgrounds of Western America—a veritable “diamond in the rough” vacation land; and answers the need for “a new place to go.”

It is a National Forest Reserve, 651,200 acres in extent, appropriated by the Government to the recreational and other uses of the American populace. Literally, then, it is *your* playground.

Unlike the National Parks (subjected to the jurisdiction and administration of the Department of the Interior), the San Isabel Forest is being directed and developed by the Department of Agriculture through its Forest Service.





*Mountain Climbing—Colorado Rockies*

The Forest consists of three divisions, the Sangre de Cristo (100 miles in length and the longest single line mountain range in the world) and Greenhorn Ranges and the Spanish Peaks, Sangre de Cristo is Spanish for the phrase "Blood of Christ"—so named by the Spaniards because the setting sun sprays its blazing red glow upon the snow-capped crests of the range.

The ranges of the San Isabel have been awakened from their slumbering because of the discovery of their latent pleasurable resources, which long have been unknown and unavailed of; and, no longer to be denied a voice in the recreation destiny of Americans, appealingly offer themselves to those who will partake of them.

The noble Rocky Mountains (of which the San Isabel Forest is a part) possess a majesty and beauty equal to any mountains in the world, reflecting the wonderful handiwork and revealing the fine artistry of Mother Nature in high degree. The ruggedness and bigness of these mountains exemplify a potency and sheer strength to command a solemn reverence to Nature's great powers.

### *Colorado Springs*

This beautiful city of 30,000 inhabitants is famous as a health and pleasure resort, and has an ideal climate. It is of commercial importance, and the greater proportion of the wealth of the Cripple Creek gold field is centered here. This accounts in part for the large number of fine private residences for which the city is especially noted.



---

Colorado Springs has handsome clubs, beautiful, costly churches and schools, dozens of fine hotels. There is a college, with spacious, attractive grounds. In some one of the many parks there is usually to be found evening entertainment. Smooth roads radiate in every direction. For a month, or even more, a motorist may enjoy this region, and on each of the days take an entirely different route. Many go even beyond Canon City, and enjoy a trip over the famous "Sky Line Drive" and Royal Gorge Highway to the top of the Royal Gorge through Phantom Canon to Cripple Creek.

Street Cars make all parts of the city and suburbs easily accessible; Manitou and Colorado Springs are connected by street cars, railroads and boulevards. South of Colorado Springs, at the foot of Cheyenne Mountain, is Broadmoor. It has a fine hotel, with a celebrated orchestra and restaurant. Broadmoor is reached by electric cars.

### *Pike's Peak Region*

This is one of the wonder trips of the world. Pike's Peak is the monarch of the Rampart Range. It was first seen by Major Zebulon M. Pike, November 13, 1806, when he was leading a small exploring party of United States soldiers. It took him ten days' marching to reach the base of the mountain. Pike declared, after futile attempts to scale the peak, that no human being could ascend to its pinnacle. Today, although 14,109 feet above sea level, it is easily conquered. The cog railway, virtually nine miles long, is the easiest route to the top. Also there is an auto highway—a double-tracked boulevard all the way to the summit of Pike's Peak, with a maximum grade of ten per cent.

From the summit of Pike's Peak you have 60,000 square miles of scenery spread out before you. Because of its isolated position at the very extremity of a grand spur of the Rockies, Pike's Peak guards both mountain and plain, and from its summit you look upon as widely different scenes as the whole world can offer. By the aid of a telescope Denver can be seen eighty miles to the north.

### *Manitou*

This charming summer resort is hidden among the hills that form the base of Pike's Peak. There are groups of mineral springs, soda, sulphur and iron, which make it a Mecca for health seekers. To accommodate adequately the pilgrimage of visitors, a \$400,000 bathhouse recently has been completed. Because of its social diversions, Manitou has long been called the "Saratoga of the West." Here are scores of hotels, the social activities in which are particularly brilliant.

Manitou has hundreds of cottages, ranging from pretentious homes of stone to the board and slab structure perched on the shelves of the hillside. It has also tenting grounds which are popular. Every one in Manitou has a good time; the scenery and wonders are just as accessible to the tenters as to the dwellers in the hotels.

### *Garden of the Gods*

This is a public park, the property of Colorado Springs. It comprises about 480 acres, and lies four miles northwest of Colorado Springs, and about two and one-half miles northeast of Manitou. A fine driveway leads from Manitou through the Mushroom Park and the Garden of the Gods to Glen Eyrie, and over the Mesa to Colorado Springs. Gateway Rocks (330 feet high), Cathedral Spires and Balanced Rock are objects of special interest. In this region titanic forces have been at play and gigantic rocks have been sculptured by wind and water through the ages.





*Scenic Highway—Pikes Peak Region*

### *Cave of the Winds*

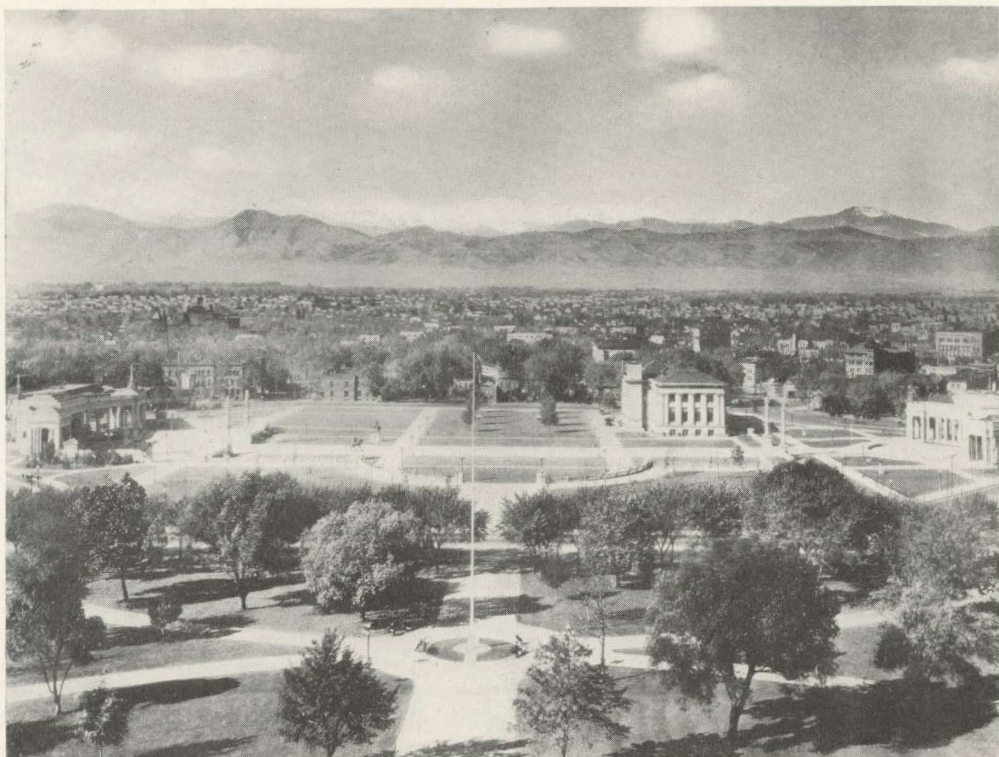
The Cave of the Winds is reached by Temple Drive, a motor highway through Williams Canon. In the cave are found beautifully wrought stalactites, stalagmites and other crystalline formations. It is an underground journey of one mile through caverns lighted by electricity.

### *Denver*

Denver the capital of Colorado, is the largest city between Kansas City and the Pacific Coast. It lies in the north central part of the State just thirteen miles from the east base of the Rocky Mountains, which stretch along the western horizon on a chain of unbroken beauty for 175 miles. It is exactly one mile above sea level, and is the gateway to twelve national parks and thirty-two national monuments.

Denver is an active business city with manufactories employing thousands of men. This does not render it any the less attractive for the tourist. In fact, it merely provides more instructive entertainment than could be found in a city entirely devoted to resort life. You should study Denver carefully because it is the economic and intellectual capital of the Rocky Mountain region. The city is served by nine railways. Its prosperity is due to the surrounding rich mining





*Civic Center—Denver*

and farming country, its wholesale trade, its extensive railway facilities, its manufacturing interests, and to the untiring energy and genius of its people who are numbered among the most progressive citizens of the United States.

You will be impressed by the beautiful parks, lawns and boulevards of Denver. Constant irrigation is responsible for greensward that the lowlands cannot duplicate, and for brilliant displays of blooming flowers as well.

The Sunshine Tour parties will be taken on a fifteen mile automobile tour of Denver. On this trip you will see the United States Mint, Auditorium Building, City Hall, Terminal Buildings, Public Library, Postoffice, all hotels, the theater district, the State Capitol, the Civic Center, and miles of boulevards lined with residences which are noted for their beauty. Stops are made at Observatory Point in Cheesman Park, for the wonderful view of mountain and plain extending over 200 miles; and at City Park with its famous Zoo of native wild animals and the Colorado Museum of Natural History.

The Colorado State Capitol is a pretentious structure of Colorado granite, which cost \$2,500,000. From the dome there is a splendid view of the city, the surrounding country and the mountains. Visitors are admitted to the dome during prescribed hours.



---

## Rocky Mt. (Estes) National Park

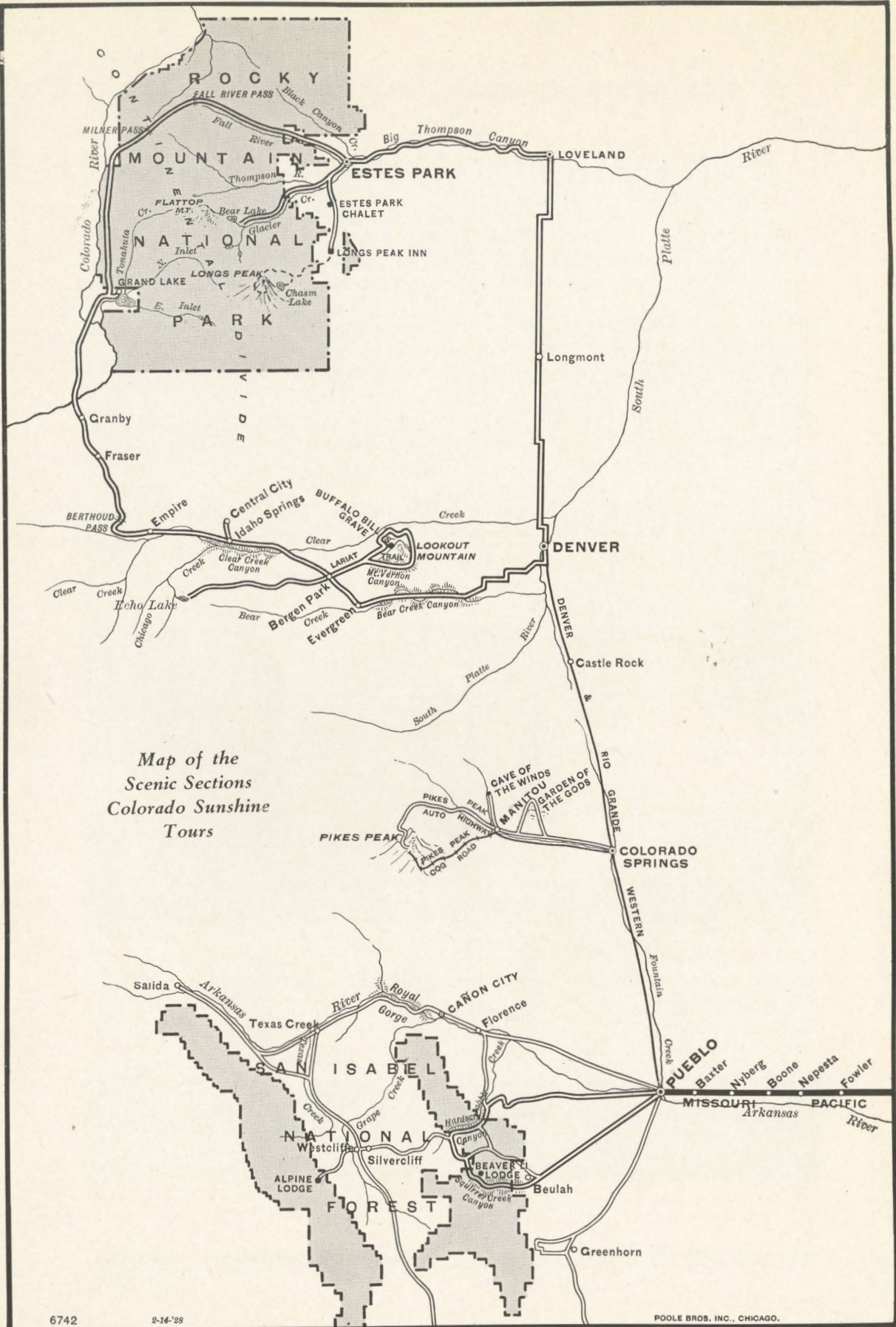
The region now known as Rocky Mountain National Park was created as such in 1915, thus becoming the thirteenth of the National playgrounds. Denver, the immediate point of departure for the Park, is 5,000 feet above sea level, while the lower level of the valleys and meadows of the Park itself range from about 7,500 feet in Estes Park, lying at the eastern entrance, to about 9,000 feet at Grand Lake, the western entrance. The motor highway connecting the eastern and western entrances reaches an elevation of 11,797 feet at Fall River Pass and 10,759 feet at Milner Pass.

Rocky Mountain National Park lies about 70 miles northwest of Denver. The trip through the Park takes us up the famous Fall River Pass and Milner Pass, crossing the Continental Divide at Poudre Lakes and passing down the North Fork of the Colorado River to Grand Lake. The Continental Divide is again crossed at Berthoud Pass and after passing Idaho Springs and winding through Denver's beautiful Mountain Parks, past Lookout Mountain and Wild Cat Point, Colonel Cody's (Buffalo Bill) Grave, Pakaska Tepee and Cody Museum, Denver is again reached.



*Grand Lake—Rocky Mountain National Park*





Map of the  
Scenic Sections  
Colorado Sunshine  
Tours



## Reservation Blank

.....  
City

.....  
Date

Mr. ....  
.....  
.....

Parties listed below desire to join Tour.....

at.....

Name

Address

City and State

.....	.....	.....
.....	.....	.....
.....	.....	.....
.....	.....	.....
.....	.....	.....

(If more than one passenger, indicate who are to be roomed together and give ages of children, if any.)

Will require Pullman space as checked below:

Lower ☐ Two in lower ☐ Compartment ☐  
Upper ☐ Section ☐ Drawing-Room ☐

Remarks .....

.....  
.....  
.....  
.....

Name .....

Address .....

City and State .....

Detach and mail to any representative listed on pages  
42-43, or A. D. Bell, Passenger Traffic Manager, Missouri Pacific  
R. R., 1650 Railway Exchange Bldg., St. Louis, Mo.



## Representatives

<b>ALEXANDRIA, LA.,</b> Hotel Bentley	
DAN JACOBS .....	Assistant General Passenger and Freight Agent
<b>ATCHISON, KAN.</b>	
O. E. BLACKETER .....	Division Passenger and Freight Agent
<b>ATLANTA, GA.,</b> 532-533 Healey Building (Walnut 2422)	
GARLAND TOBIN .....	General Agent, Passenger Department
<b>BEAUMONT, TEXAS,</b> Beaumont Hotel	
SAM L. O'BAUGH .....	City Passenger and Ticket Agent
<b>BIRMINGHAM, ALA.,</b> 1009-1010 Woodward Building (Phone 3-3376)	
D. D. GOFF .....	General Agent, Passenger Department
<b>CAIRO, ILL.,</b>	
H. V. GREGORY .....	Division Passenger and Freight Agent
<b>CHATTANOOGA, TENN.,</b> 504 Provident Building	
C. C. HART .....	General Agent, Freight and Passenger Department
<b>CHICAGO, ILL.,</b> Room 610, 112 West Adams Street (State 5131)	
J. J. MCQUEEN .....	General Agent, Passenger Department
<b>CINCINNATI, OHIO,</b> 203 Dixie Terminal Building (Main 5383)	
HARRY FOUNTAIN .....	General Agent, Passenger Department
<b>CLEVELAND, OHIO,</b> 611 Park Building (Main 340)	
V. K. NORBERT .....	General Agent, Passenger and Freight Department
J. W. CERNY .....	Traveling Passenger Agent
<b>COLORADO SPRINGS, COLO.,</b> Consolidated Ticket Office, 125 East Pikes Peak Avenue (Main 163)	
<b>DENVER, COLO.,</b> 515 Seventeenth Street (Keystone 3618)	
C. E. JOHNSON .....	General Agent, Passenger Department
<b>DETROIT, MICH.,</b> 6-243 General Motors Building (Phone Northway 5123-5124)	
L. M. WHITE .....	General Agent, Freight and Passenger Department
E. O. NILES .....	District Passenger Agent
<b>EL DORADO, ARK.,</b> 410 Exchange Building	
H. W. HAINES .....	Division Passenger and Freight Agent
<b>FT. SMITH, ARK.,</b> 523 Garrison Avenue (Phone 6317)	
JOSEPH WEISIGER .....	City Passenger and Ticket Agent
<b>GREENSBORO, N. C.,</b> 605 Jefferson Standard Building	
J. A. MILLS .....	Commercial Agent, Freight and Passenger Department
<b>HELENA, ARK.,</b> 324 Cherry Street	
R. E. LAW .....	Commercial Agent, Passenger and Freight Department
<b>HOT SPRINGS, ARK.</b> (Phone 3325-3326)	
LEON NUMAINVILLE .....	Passenger and Ticket Agent
<b>HUTCHINSON, KAN.,</b> 301 South Main Street	
C. M. DAVIS .....	Division Passenger and Freight Agent
<b>INDIANAPOLIS, IND.,</b> 313 Merchants Bank Building (Riley 2894)	
W. J. FROST .....	General Agent, Passenger Department
<b>JOPLIN, MO.,</b> 106 W. Fourth Street (Phone No. 79)	
C. P. ELKINS .....	City Passenger and Ticket Agent
<b>KANSAS CITY, KAN.,</b> 909 North Sixth Street (Grand 1702)	
G. H. FOOTE .....	Agent, Consolidated Ticket Office
<b>KANSAS CITY, MO.,</b> Passenger Department, 630 Railway Exchange (Victor 6100)	
F. L. ORR .....	General Passenger Agent
<b>KANSAS CITY, MO.,</b> City Ticket Office, 707 Walnut Street (Victor 6100)	
I. G. MILLER .....	Division Passenger Agent



## Representatives

(Continued)

**LAKE CHARLES, LA.,** Majestic Hotel Building (Phone 1781)  
A. F. TINSLEY.....City Passenger and Ticket Agent

**LINCOLN, NEB.,** 200 South Thirteenth Street (Phone B-3125)  
H. T. GUINN.....Division Passenger and Freight Agent

**LITTLE ROCK, ARK.,** Passenger Terminal (4-5181)  
C. K. BOTHWELL.....General Passenger Agent

**LONDON, ENGLAND,** Palmerston House, Bishops Gate  
E. J. BRAY.....European Traffic Manager

**MEMPHIS, TENN.,** 273-274 Shrine Building (6-6542)  
T. D. MOSS.....Assistant General Passenger Agent  
DUDLEY BAKER.....Division Passenger Agent  
74 Monroe Ave. (6-0101)  
R. G. SUTTON.....City Ticket Agent

**MONROE, LA.,** New Virginia Hotel (Phone 2400)  
B. S. BETTS.....City Passenger and Ticket Agent

**NASHVILLE, TENN.,** 313 Independent Life Building  
J. M. BRYAN.....General Agent, Freight and Passenger Department

**NEW ORLEANS, LA.,** City Ticket Office, 207 St. Charles Street (Main 0661)  
MARK ANTHONY.....Division Passenger Agent

**NEW YORK, N. Y.,** 811 Brokaw Building, 1457 Broadway (Wisconsin 2181-82)  
D. I. LISTER.....General Eastern Passenger Agent

**OMAHA, NEB.,** 1419 First National Bank Building (Jackson 4543)  
W. T. YOHN.....District Passenger Agent

**PARAGOULD, ARK.,** Missouri Pacific Station  
F. C. MACK.....Commercial Agent, Passenger and Freight Department

**PITTSBURGH, PA.,** 477-479 Union Trust Building (Atlantic 3820-21)  
W. H. RICHMOND.....General Agent, Passenger Department

**PUEBLO, COLO.,** 100 S. Union Ave. (Phone 183)  
C. M. COX.....City Passenger Agent  
Consolidated Ticket Office, 109 W. Fourth St. (Phone 1906)  
S. C. BAKER.....Agent

**SEDALIA, MO.,** Missouri Pacific Passenger Station  
V. J. KAISER.....Division Passenger and Freight Agent

**SHREVEPORT, LA.,** 910 City Bank Building (2-5773)  
DIXIE HANNIBAL.....General Agent, Freight and Passenger Department

**ST. JOSEPH, MO.,** 307-8 Corby-Forsee Building (Phone 6-2265)  
N. A. BEACH.....Division Passenger and Freight Agent

**ST. LOUIS, MO.,** Passenger Department, 1650 Railway Exchange Building (Main 1000)  
W. F. MILLER.....Division Passenger Agent  
City Ticket Office, 318 North Broadway (Main 1000)  
F. W. SCHWANECK.....City Ticket Agent

**TAMPA, FLA.,** 1007 First National Bank Building  
R. W. MOSS.....Commercial Agent, Freight and Passenger Department

**TEXARKANA, ARK.,** Missouri Pacific Freight Station  
W. D. ARENS.....Division Passenger and Freight Agent

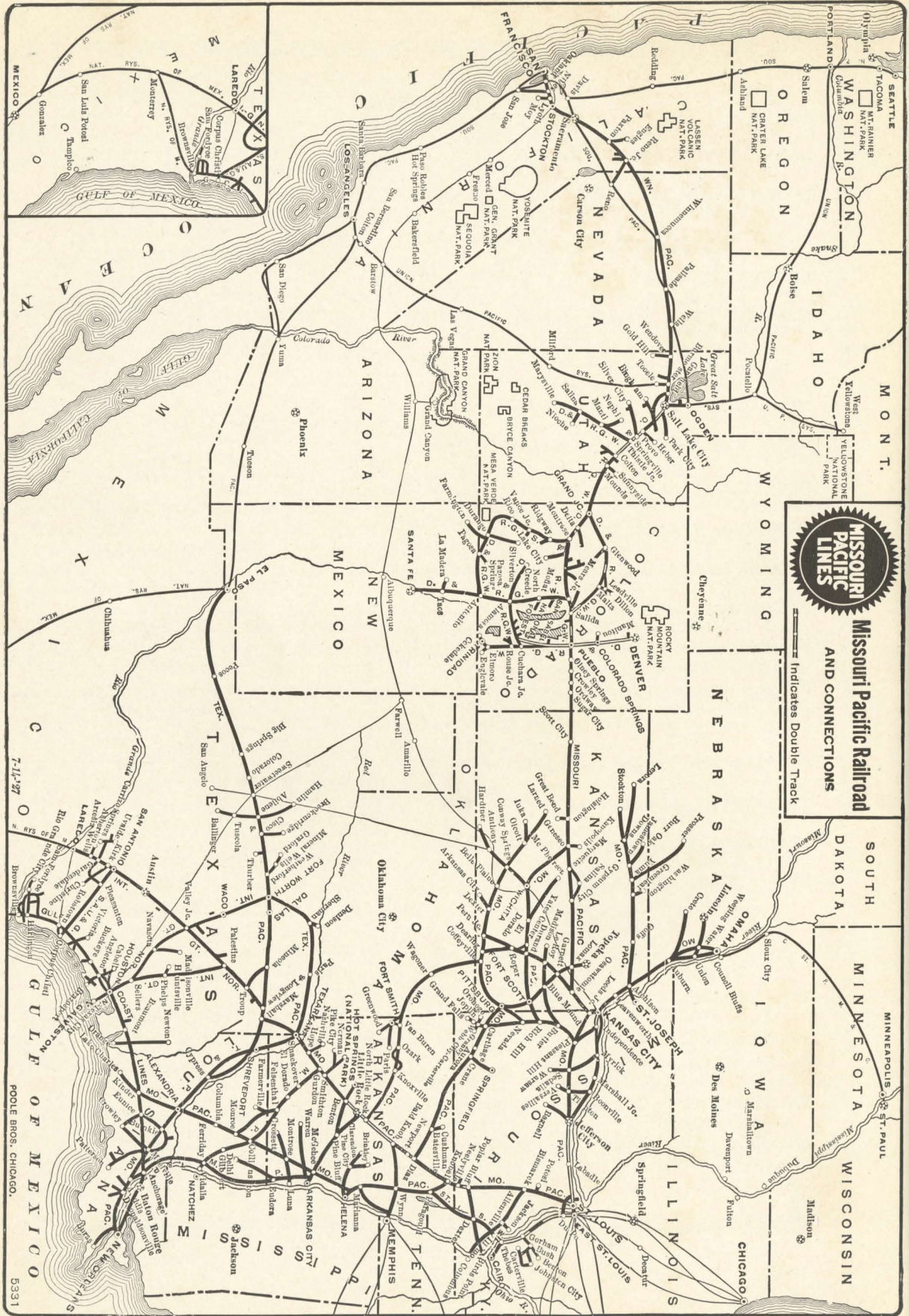
**TOPEKA, KAN.,** C. A. BUELL.....General Agent, Passenger and Freight Department

**TULSA, OKLA.,** 205 Mid-Continent  
R. R. TRIMBLE.....General Agent, Passenger and Freight Department

**WASHINGTON, D. C.,** 929 National Press Building  
J. W. BRENNAN.....General Agent, Freight and Passenger Department

**WICHITA, KAN.,** Missouri Pacific Passenger Sta., Douglas and Wichita Sts. (Market 469-470)  
M. S. KITCHEN.....General Agent, Passenger Department





**Missouri Pacific Railroad**  
AND CONNECTIONS

== Indicates Double Track

7-11-27

POOLER BROS., CHICAGO.

5331









*"A Service Institution"*