

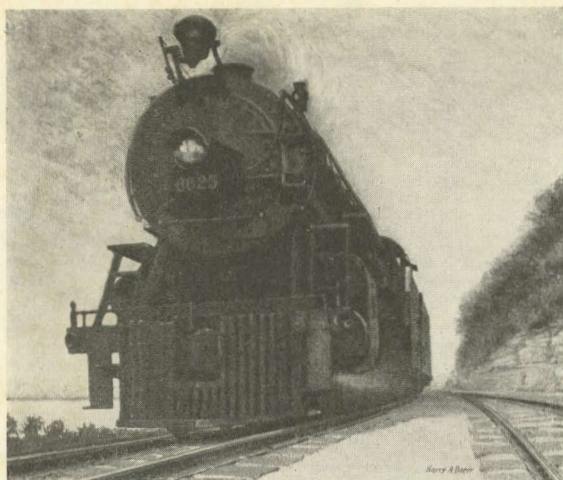
California



Best
Way
West



"A Service Institution"

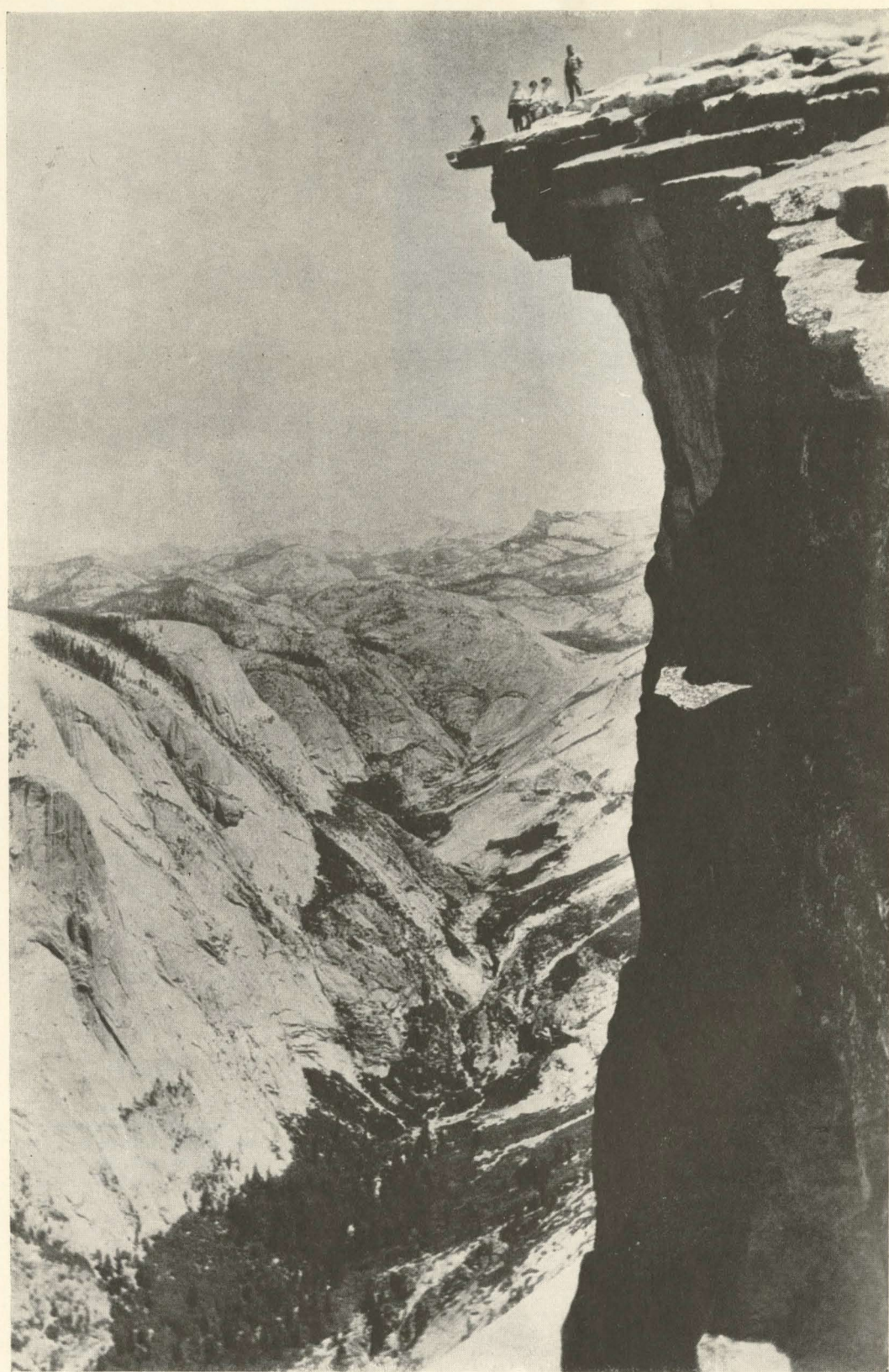


Published by

A. D. Bell
Passenger Traffic Manager
MISSOURI PACIFIC R. R. CO.
St. Louis, Mo.
1927



"A Service Institution"





"Cinder Cone"—A Volcano in Lassen Volcanic National Park

Golden California



WHEN YOU have stood on a moonlit California beach; when you have climbed the mountain heights; when you have driven over miles of smooth highways, lined with palms and flowers; when you have inspected the ancient missions, roamed famed redwood forests and visited shimmering Yosemite Falls, you will discover the charm of enchanting California.

No other wonderland offers so wide a variety of interesting diversions; no other land combines the possibilities of mountains, cities and sea which one finds there.

"Big Trees," Yosemite, General Grant, Sequoia and Lassen

Volcanic National Parks offer sights of unparalleled natural phenomena and scenic beauty. The Coast Range, the Sierra Nevadas, Sierra Madres and the San Bernardino Ranges, with lofty peaks reaching more than 14,000 feet above sea level, with magnificent vistas across fertile valleys and over the Pacific Ocean, challenge the hardest mountaineer.

There are missions centuries old. . . . The coast is lined with delightful bathing beaches, where, also, one may secure boats and tackle for deep-sea fishing. . . . San Francisco, Los Angeles, Sacramento and San Diego are representative of the delightful cities of California; near each of these



San Francisco Bay—Largest in the World

one finds innumerable golf courses (near Los Angeles there are 65), tennis courts and polo grounds.

San Francisco

Weird, mysterious, cosmopolitan. No other city in America has sired the wide variety of races which people this interesting city. Granted San Francisco's extraordinary civic beauty, wrought by the very nature of its geographical location; granted the beauty and splendor of its homes, its churches and its parks, its per-

sonality would be much less striking without the influence of these races, which gives one a glimpse of the Orient, of Spain and Constantinople, of Athens and New York.

Chinatown — bizarre, exotic — holds to many the deepest appeal. Pagoda-like roofs cover quaint shops tended by sleek Chinese girls; here you will find miracles in gold filagree and jade; across the street is the Joss House and Chinese Theater pushing into the Latin quarter. The Greek settlement, Japanese streets, the Span-



Chinatown, San Francisco—Note the "Employment Agency" Across the Street

ish and Mexican districts are equally alluring.

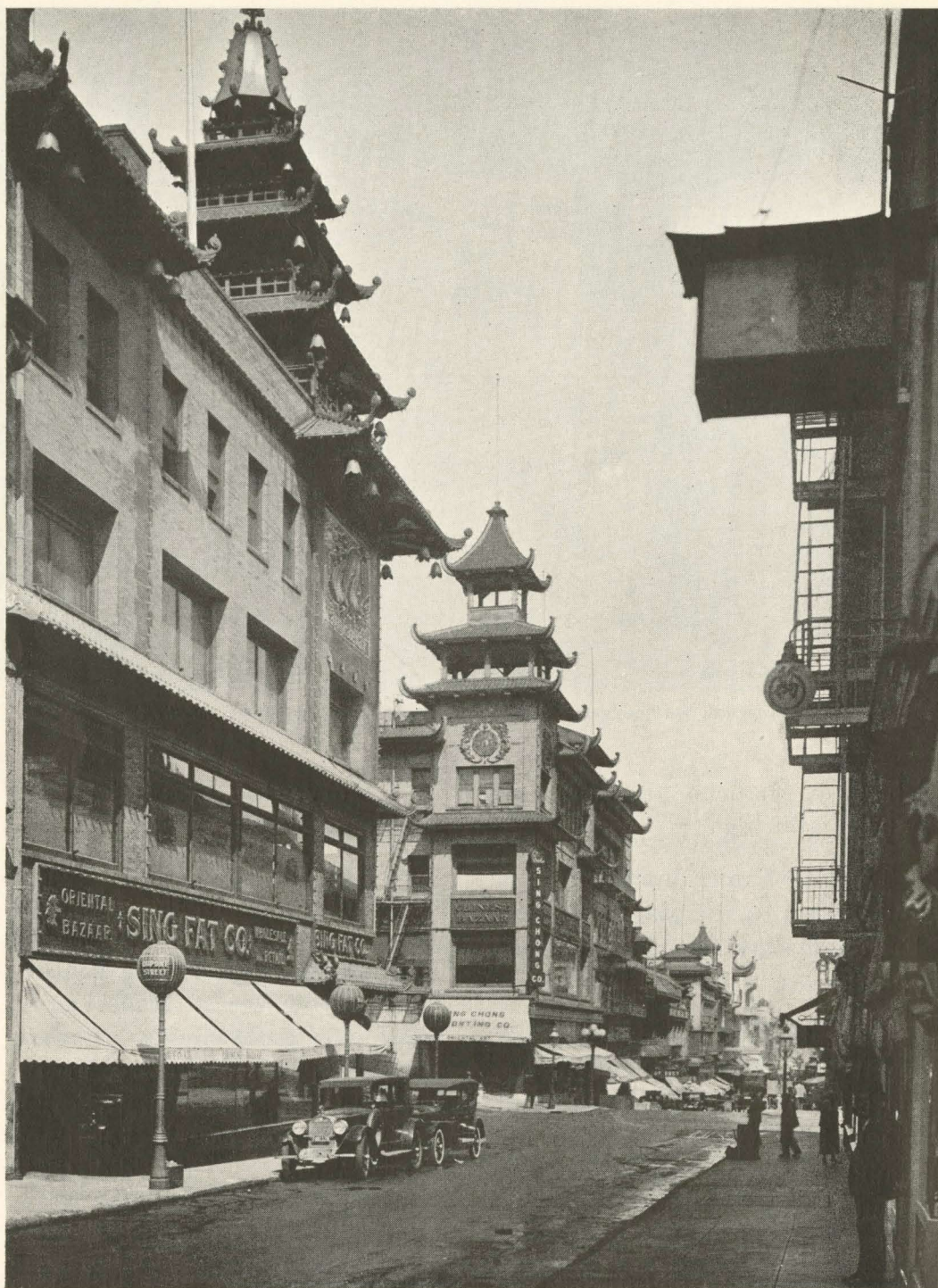
Turn to San Francisco's hills and vistas; to the glamor of San Francisco Bay, the Golden Gate and the sea.

Since that foggy day in 1775 when Don Juan Manuel Ayala, mariner, charted the way through the Golden Gate, fame and romance have ever followed. The beauty of a California sunset, watched from the shore before this gate to the Asiatic seas, has furnished the inspiration for song

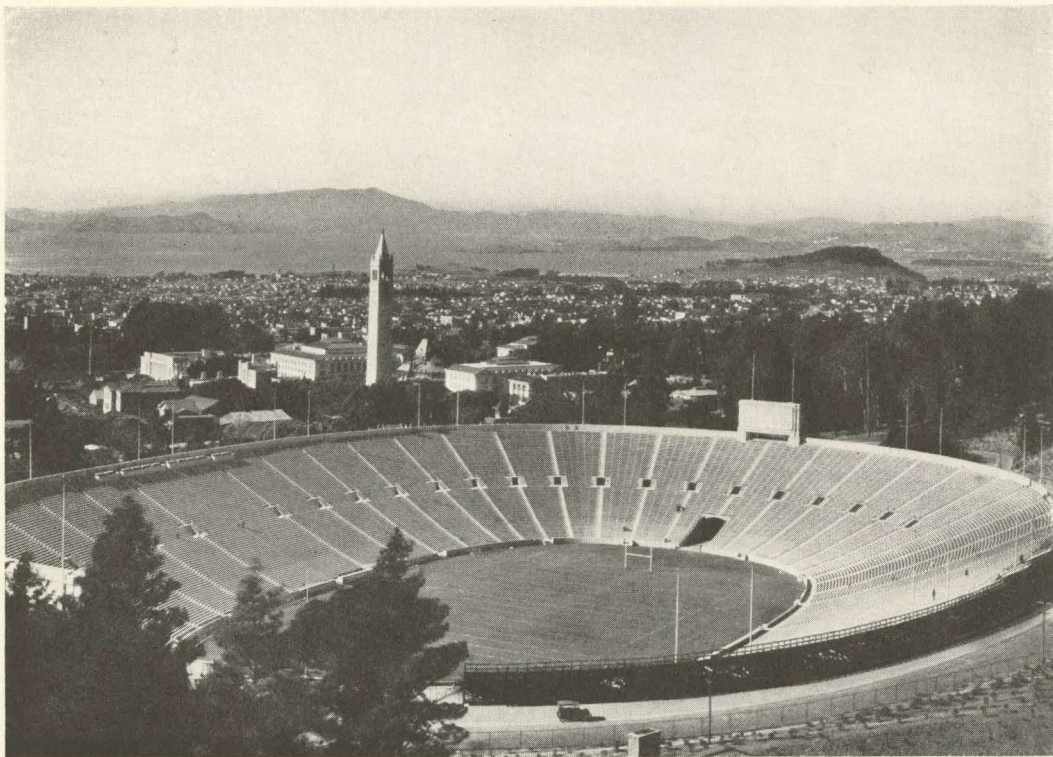
and story; for the artistry of brush and canvas.

In the bay one finds a magic array of sea-craft, flaunting the banners and flags of innumerable nationalities. Along the Embarcadero you see a trans-Pacific liner overshadowing a cringing Chinese junk; Singalese, Portuguese, Chinese and many other hardy seamen stroll here and there, much as they did three months before along the East India Dock Road, London.

Like Rome, Naples and Athens, San Francisco looks down



The Orient Brought to America: Chinatown's Shopping District



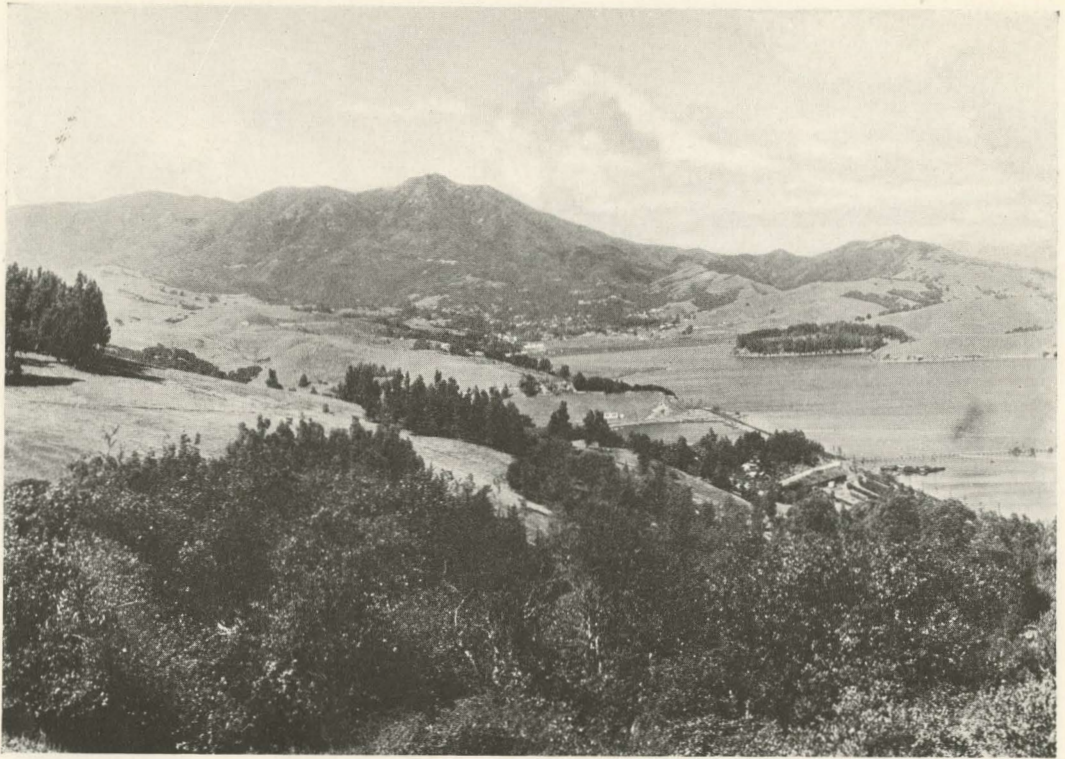
University of California Memorial Stadium, Berkeley

upon its world from towering hills. A journey over these (there are good highways) will give the visitor rich return. Nob Hill is covered with distinctive homes, offers a marvelous view of the harbor and of Goat and Alcatraz Islands; of the maritime industry within the Golden Gate. Northward, on Russian Hill, home of painters, authors, one enjoys another inspiring panorama of the city and bay. Continue then to Buena Vista Park, at the crest of another hill; here is the best of all—glittering expanse of ocean and

bay on three sides; Lake Merced, blue-green in the distance; Golden Gate Park; the Presidio; distant, friendly Mt. Tamalpais.

A delightful one-day trip is from San Francisco to Tamalpais and the big-tree region in Muir Woods.

Across the bay one sees Oakland and Berkeley (home of University of California), thriving, beautiful cities which unite with San Francisco to form the foremost gateway to Hawaii, the Orient and Australia.



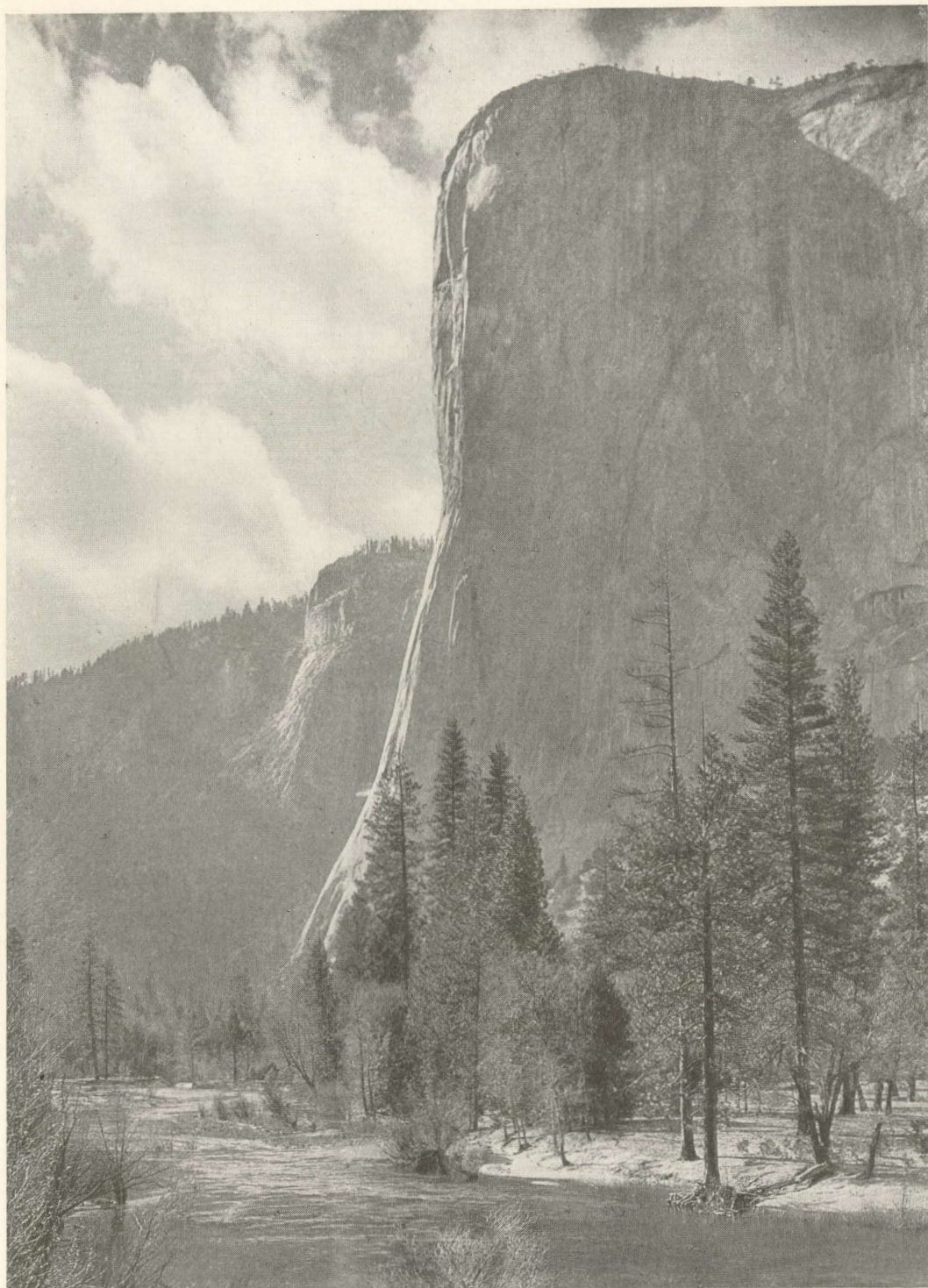
Mount Tamalpais—Across the Bay from San Francisco

Using San Francisco as headquarters, one may journey east and northeast to lands of entrancing beauty.

There is a colossal cleft in the Sierra Nevadas east of San Francisco where nature has created a fairyland. It is called Yosemite National Park. Here abide El Capitan, Half Dome, Sentinel Rock, Cathedral Spires and Three Brothers—masterpieces in sculpture—gigantic forms wrought from granite peaks towering toward the sky. These huge formations are often smooth as

glass; they glitter in the sunlight. They are studded with shimmering waterfalls—Bridal Veil, Nevada Falls, and, greatest of all, famed Yosemite Falls, which plunges dizzily from its half-mile-high precipice to meet the Merced River.

This, too, is the region of the Sequoia Gigantea—the big trees of California. Here is “Grizzly Giant,” the tallest tree in the world; the oldest living *thing*: when the baby Moses was hidden among the bulrushes of distant Egypt “Grizzly Giant” was a



Stately "El Capitan"—3,604 Feet Sheer Above Yosemite Valley



The Mysterious Charm of the Yosemite Is Revealed at Inspiration Point

thriving young sapling. Since then he has looked down, unperturbed, upon the varied destinies of many civilizations.

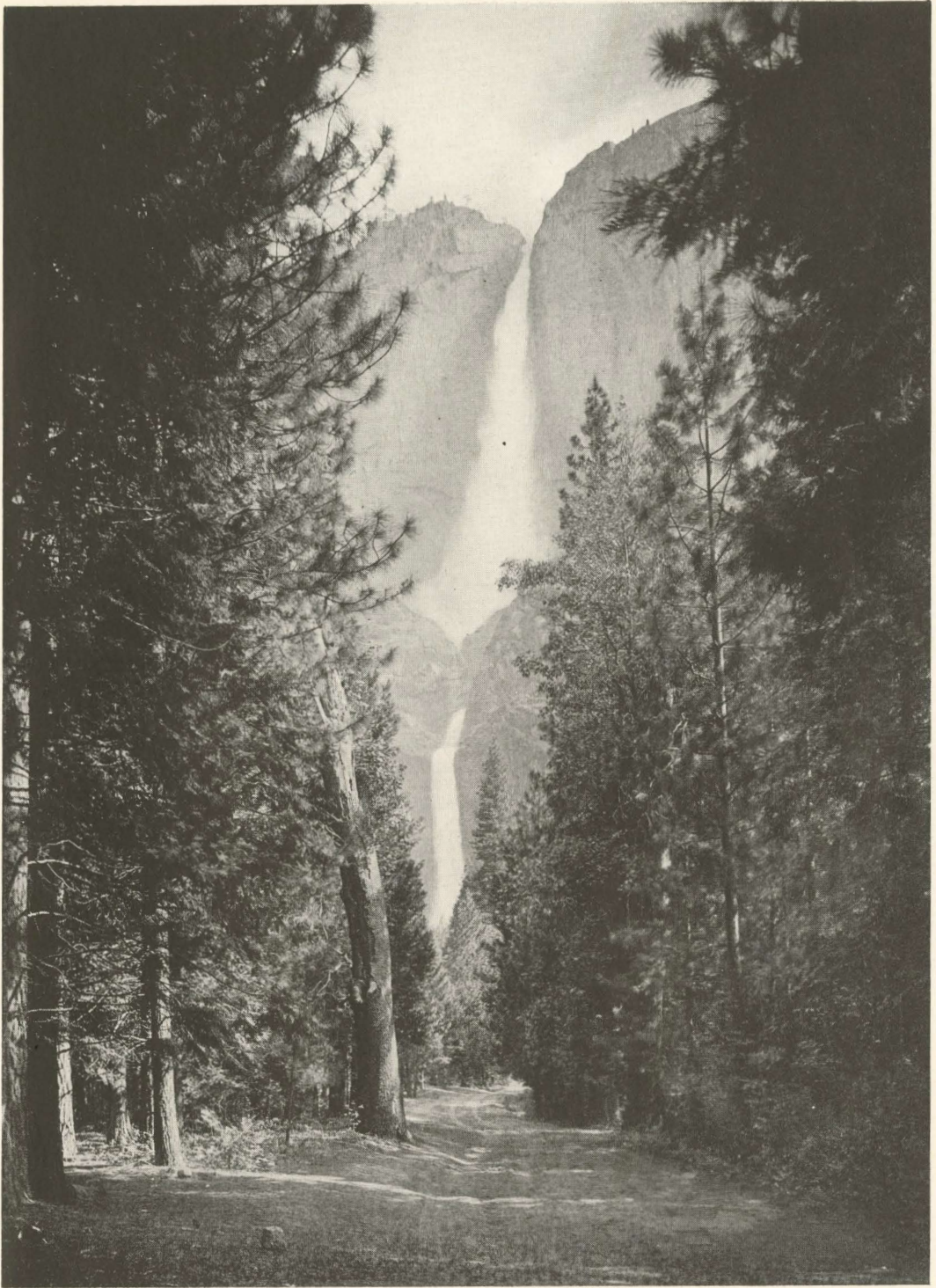
The most impressive specimens of these trees are found within the boundaries of Yosemite, Sequoia and General Grant National Parks.

To the north, where California and Nevada meet, is Lake Tahoe, a lake of surpassing beauty; it is to America what Lake Como is to Italy.

On the return to San Francisco,

Sacramento, capital of California, may be visited. Between Lake Tahoe and Sacramento are the old placer mining camps, scene of the gold rush of '49.

Here vast throngs came to seek their fortunes; gold was found in the beds of shallow streams—millions were made overnight. Here there were murders and pistol duels; actual occurrences which have formed the foundation for hundreds of weird and hair-raising stories of the old "Wild West."



Great Falls of the Yosemite Viewed from the Heart of the Valley



Riding Parties Add Pleasure to Your Visit in Yosemite National Park

Southern California

California is especially intriguing because of her striking contrasts. South of the Tehachapi, a mountain barrier running east and west, 200 miles north of Mexico, is that delightful all-year

playground, Southern California. Here, due to the decidedly different climate and geographical conditions, one finds an attitude unlike that of the more vigorous area northward.

Los Angeles

Los Angeles is the metropolis of this Golden Empire. It is the largest city in the Western Americas. Here, as in all the Southern California cities, one finds miles of palm-lined drives, unique

homes built in the Spanish *hacienda* fashion, beautiful parks in which many varieties of semi-tropical plants and flowers flourish.

Five thousand miles of paved



There Are Restful, Healthful Cabins at Reasonable Rates in the Yosemite

roads radiate from Los Angeles, leading past far-flung citrus groves, along the shores of the Pacific, beside Ocean Park, Venice, Santa Monica, Manhattan, El Segundo and scores of other beaches, all within easy distance of Los Angeles. Surf bathing is a year-round sport; the average temperature of Southern California is 65 degrees.

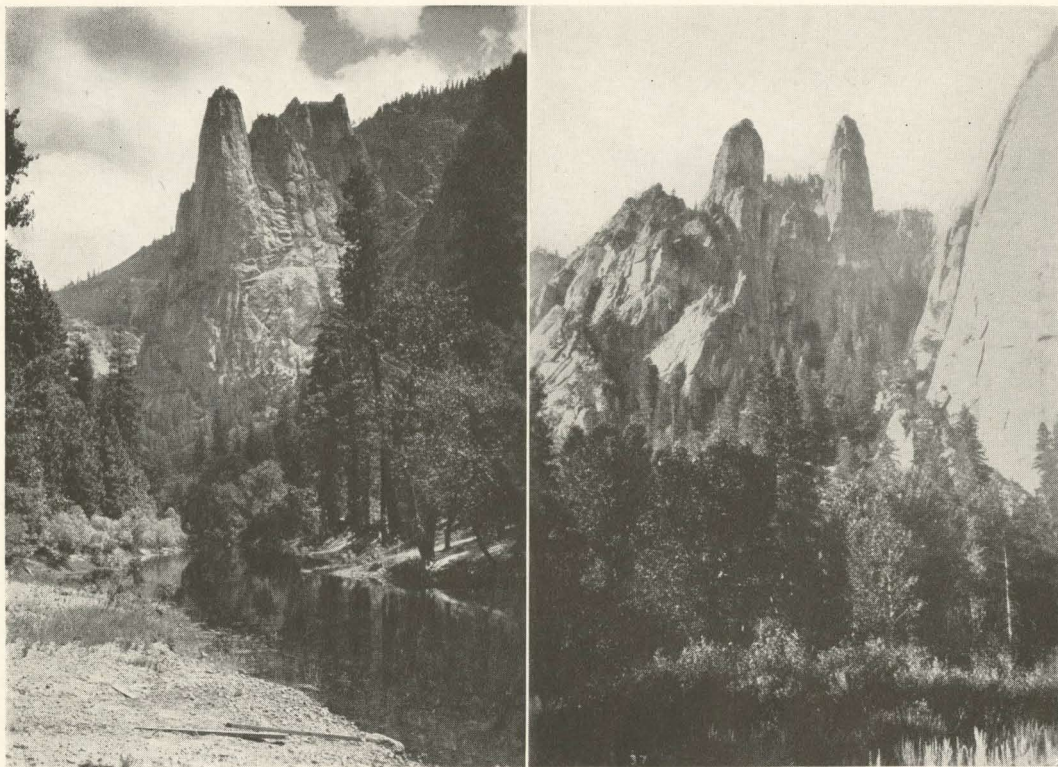
There are 47 parks in Los Angeles, the largest being Griffith Park, containing 3,000 acres, preserved in all its natural beauty. Journeying over Hollywood

Mountain, a part of the park, you escape all vestige of settled country; apparently you are miles away from the nearest outpost of civilization.

From the heart of Los Angeles' business section you may view the summit of Mt. Lowe, probably the only mile-high mountain whose peak is attained by electric trolley. Mt. Wilson's summit also looks down upon Los Angeles business district; here is located the world's largest reflecting telescope. A visit to the great Carnegie Institute Solar Observa-



Giant Redwoods Like This Are Found in Many California National Parks



Sentinel Rock and Cathedral Spires, Yosemite National Park

tory is decidedly worth while. Reached by stage from Los Angeles or Pasadena.

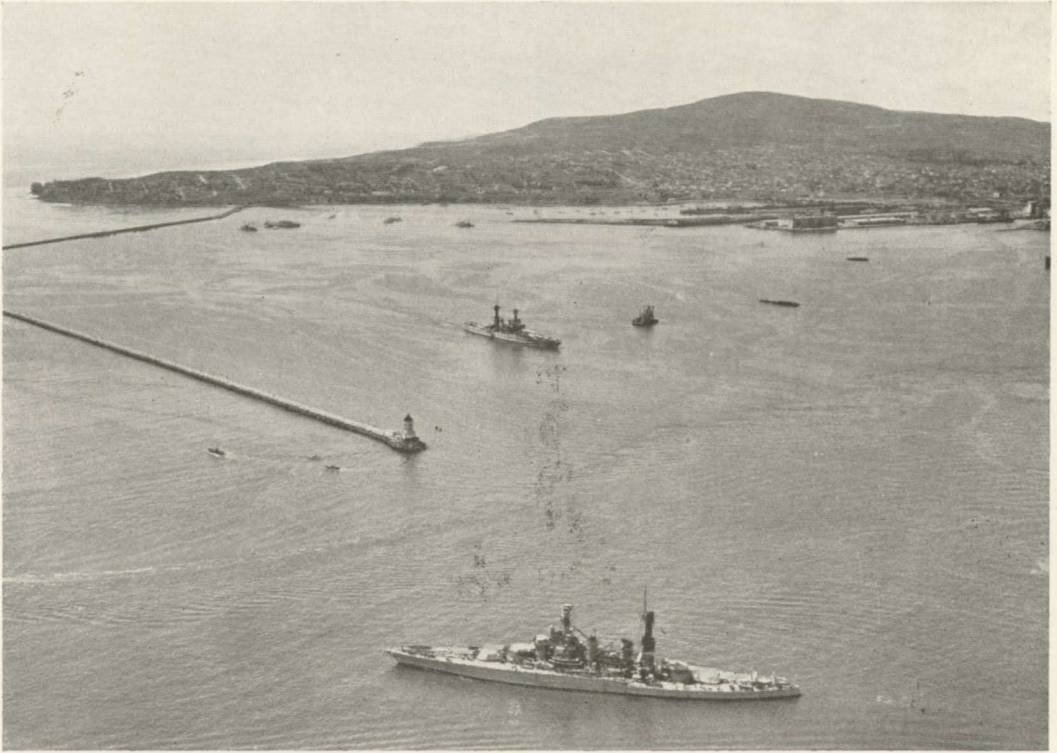
Many of the world's largest oil fields are less than an hour from Los Angeles. The oil derricks, rising against the sky, lend a distinctive, unusual touch to the landscape of orange blossoms and walnut groves.

The Southwest Museum, in the *Garvanza* section of Los Angeles, contains a comprehensive exposition of the great Southwest. Of especial interest are the displays

of relics belonging to the original races which peopled this region. The museum building is beautifully situated at the summit of a beautifully wooded hill.

The Mission Play

Summer visitors to this part of California are especially fortunate, for this is the season of the Mission Play, staged at San Gabriel, near Los Angeles, during the summer months. Conducted in the shadow of ancient San Gabriel Mission, it portrays the dramatic struggle of the early



Los Angeles Harbor and Breakwater: Two Men-of-War at Ease

Franciscan monks in establishing Christianity and Spanish dominion on our western shores.

San Diego

At home, when spring is in full sway, when the flowers have bloomed and the trees are green with young leaves, when the very air is redolent of sweetness and lassitude—you have a typical Southern California day *as it is every day*.

San Diego has been called a natural stadium wherein the spec-

tator views the marine blue of ocean blending with the golden blue of the western sky, with *Coronado*, a slender silver thread of sand sweeping southward, dividing the bay from the Pacific.

You'll enjoy the magnificent mansions, quaint little bungalows and Spanish villas of San Diego. Balboa Park, 1,400 acres along the coast, unfolds entrancing vistas of mountains, valleys and sea. Here are red-tiled, cloistered buildings which house the arts and sciences, a museum and library—further on you'll find the



A Typical Southern California "Hacienda"

stately outdoor organ, a \$100,000 gift to the city.

On San Diego Bay are many fashionable resorts; famed Coronado is prominent among these. East of San Diego is fertile Imperial Valley, bordered by golden mountain ranges. Northward is Coachella Valley, the center of American date production. At the upper end of the Coachella is Palm Springs, where you may enjoy a most unusual adventure.

To reach Palm Springs you travel across sandy desert wastes, apparently leaving the beauty of

California behind. The sun beats down perhaps uncomfortably warm for a short time, but just when you are beginning to wonder why this trip is so popular, Palm Springs, a delightful all-year resort, looms on the horizon. Here you rest, then pick up a sandy trail leading onward into the desert. Abruptly you pierce a canon wall and before you is a cool, clear pool, bordered with green and brown palm trees, a perfect oasis rivaling the "emeralds of the Sahara." This is known as Palm Canon, it is of a



In Hollywood—Scenic Beauty Vies with the Movies for Your Praise

type rarely found in America, hence it is unusually interesting.

In briefly sketching San Francisco, Los Angeles and San Diego, we have endeavored to give a cross-section of the various types of cities found in California. There are scores of others, including Santa Barbara, Pasadena, Santa Cruz, each possessing extraordinary charm and beauty.

The paved highways and convenient rail connections place all these cities within easy reach of the California visitor, a feature for which the Golden State is

especially noted. The automobile routes lead through all the interesting cities; you may stop where you like and be sure that a suitable hotel or inn is nearby.

Traveling from the environs of San Francisco to the cities of Southern California by automobile presents a trip unsurpassed in loveliness; it is comparable only to the journeys along the coasts of Spain and Italy.

Missouri Pacific Lines representatives in Los Angeles and San Francisco will gladly assist in arranging special trips.



A Few Days from Now You Can Be on This Beach

Scenic Attractions of Southern California

If you have visited the Lido and Venice, and have viewed the marvels of the Italian Riviera, you may have a bare conception of the wonders of Southern California. Beautiful, colorful valleys, fragrant with orange blossoms. Snow-covered peaks rising in the distance, glowering down upon modern valley cities and centuries-old missions which dot the lowlands.

You will find smooth beaches and rugged cliffs dropping sheer

into the sea, mysterious caves tunneling from the ocean far into the mountainside.

The caves of La Jolla, 15 miles north of San Diego, are perhaps the most interesting. For ages the ocean has pounded against the cliffs, forming grottos of unusual design and coloring. At high tide the entrances are submerged, but at low tide they may be explored. Abalone shells of rare beauty frequently are swept up from the



The Prado—Balboa Park, San Diego—One of Many Lovely Highways

ocean floor and deposited in the caves.

Carriso Gorge

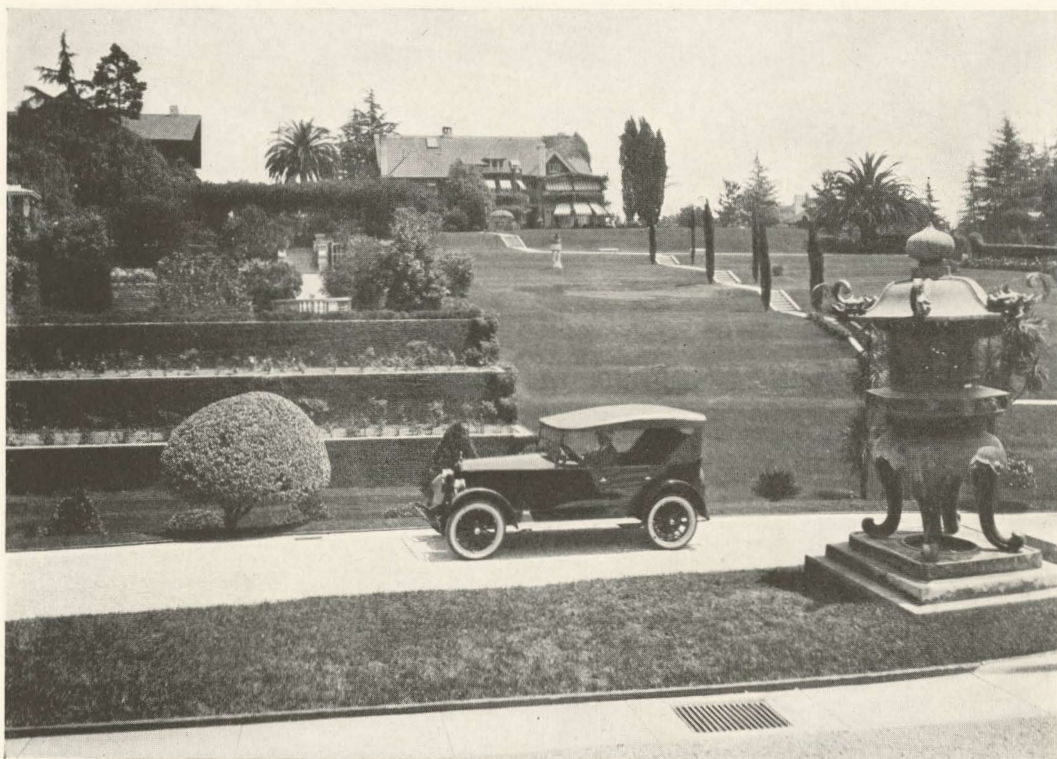
Between San Diego and the Imperial Valley, in the heart of the mountains, a deep, picturesque gorge has cut its way. Eleven miles long, its rock walls, catching the sunlight, are splashed with all the colors of the rainbow; sometimes a brilliant color streaks along the canyon wall for half a mile. The cliffs form a natural terrace, sweeping down to cavernous depths.

Mt. Rubidoux

Located in Riverside, Mt. Rubidoux perhaps is most famous for the Easter Sunrise Services, held every year. From its summit are charming views of distant peaks and valleys; although but 1,000 feet high, Rubidoux's location is unusually good for admiring the miles of surrounding countryside.

Recreation and Resorts

You find gay, ruddy-cheeked children in California; smiling,



Busch's Gardens—The Last Word in the Artistry of Landscape Gardening

carefree parents. On every hand there's health, which is the foundation of happiness. Why? Because the all-year springtime climate throws open the out-of-doors; clean, salty sea breezes stimulate active bodies; the accessibility of the mountains, valleys and ocean provides one gigantic playground.

Start from San Francisco southward. Here are Del Monte and Monterey, among scores of other resorts, where San Francisco's society and sport life finds

richest expression. Exquisitely appointed hotels; modest, rose-entwined cottages. You can play a new golf course every day; learn the intricacies of yachting, watch the thundering polo games....

Continuing southward to Los Angeles, there are more resorts* offering similar recreational opportunities.

* A leaflet, containing information regarding many of the leading resorts and hotels, will be found in the back of this booklet.



Almond Orchard in Full Bloom

Sports

Yachting has become a major sport. In Los Angeles alone there is a club of some 2,400 members, with 450 sea-craft. In addition to the Los Angeles Club are the California Yacht Club, San Diego Yacht Club, Southland Sailing Club of Balboa, Catalina Island Yacht Club, Newport Harbor Yacht Club, and the Santa Barbara Yacht Club.

All manner of minor sea-craft are included in the fleets of these clubs—catboats, marions, snow-

birds, speed boats, hydroplanes and steam yachts.

Complete information regarding clubs may be secured through the Missouri Pacific Lines representative in Los Angeles or San Francisco.

While surf bathing is a popular sport, and is one of the most enjoyable diversions of California, inland swimming pools (indoor ones on the coast) are growing in importance. There is a great deal of difference in surf and pool bathing, consequently bathers are



"The Snow on the Golden Sierras"—from a Redlands Orange Grove

using both to get the most pleasure from this sport.

Fishing--Hunting

We have referred to the opportunities for deep-sea fishing in California. The mountain lakes and streams afford equally fine fishing and meet the requirements of those fishermen who find most pleasure in pursuing fresh-water fish. Trout and bass abound.

In the mountains and canons are deer and antelope. There are

grouse, quail and many other varieties of game birds. Further in the wilderness you may hunt wildcat, cougar and bear. These are not found in large numbers, but many are killed each season.

California has strict rules to preserve the sport of hunting and of fishing.

The hunting season is during Fall and Winter, open season varying, of course, for the different kinds of game. Deep-sea fishing is open all year (for tuna, sea bass, albacore, etc.). Trout fishing, May 1st to November 1st.



San Luis Rey Mission, Near San Diego. One of the Best Preserved California Missions

Santa Catalina Island

This is one of the most fascinating points of interest in California. It is actually the peak of a sea mountain, lying 26 miles off shore from Los Angeles harbor. Around it is woven a tale of romance and adventure dating to bygone eras. Its ancient Indian inhabitants, now vanished, left weird mementos of their civilization, unearthed from time to time by the white men who followed them. "Pirates' Cove" is one of the hidden harbors where predatory captains of Spanish galleons

retreated to divide the spoils of piracy.

It is a gem of scenic beauty. On it is Avalon, "where the flying fishes play." In Catalina Bay one sees foreign yachts anchored, cruisers from distant lands come to Catalina for its famous deep-sea fishing. Its submarine gardens, too, are world famous. One may view these strangely wrought ocean floors from glass-bottomed boats; the water is crystal clear.

On Catalina Island, typical of



La Jolla ("La Hoya")—You Will See Why Famous Artists Gather Here

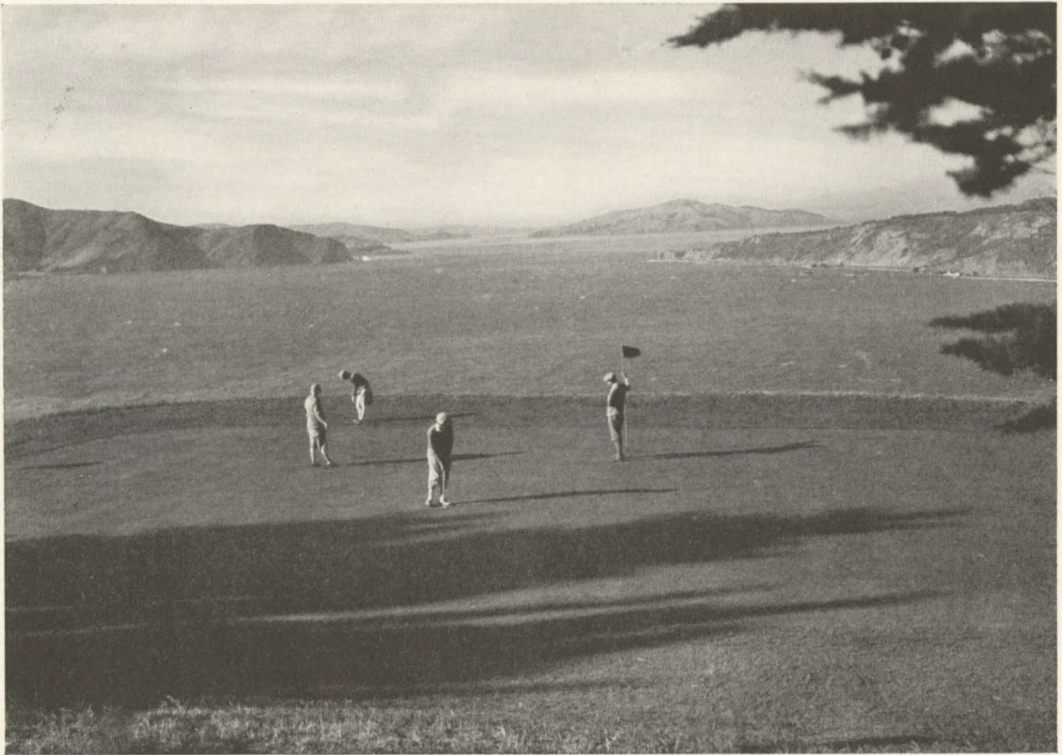
all California, there are excellent hotels, tent cities, splendid boating and bathing facilities.

Hollywood

Eighty-four per cent of American films are produced in Southern California. (Another testimonial for its climate and scenic beauty!) In Hollywood, Glendale and other cities near Los Angeles one finds not only the plants of the larger motion picture producers, but the homes of internationally famous stars.

Pageants, Fiestas

Southern California presents a pageant, a fiesta or some other interesting event every month in the year. In January comes the brilliant Tournament of Roses, at Pasadena. Here scores of floats covered with all manner of fresh flowers are paraded through the main streets of the city. The rare beauty of the pageant lies in the fact that no artificial flowers are used. Following the parade, a football game in which the East and West complete is held on the athletic field.



Where a Too Enthusiastic Pull Will Send Your Golf Ball Into the Sea

Horse shows of unusual interest are held in Beverly Hills and in Los Angeles during January each year.

In February the Mission Play at San Gabriel is usually presented. The National Orange Show, in which every variety of citrus fruit is exhibited, is held in San Bernardino during February.

In March or April Easter Sunday is observed with great ceremony in the form of morning devotions in most of the cities and towns. These ceremonies are held

at dawn on the most picturesque hillside near each city; they are attended by thousands. The Hollywood Bowl at Los Angeles, Mt. Rubidoux at Riverside, and Easter Rock on Mt. Lowe are among the enchanting locations where the impressive, reverent sunrise ceremony is held.

In April the spring flowers of Southern California are in full bloom. Southern California celebrates this season with flower shows in Santa Barbara, San Diego and other cities.



Aquaplaning Is a Delightful, Exhilarating Sport

In May one of the outstanding events is the Valencia Orange Show at Anaheim. Valencia oranges thrive in California; their value to growers is superior to that of other varieties because they will live on the trees for many months after ripening.

June is filled with many unusual events. The Mission Pageant at San Juan Capistrano begins. This is a presentation of the history of the ancient mission, staged on the mission grounds. Commencement day of the Pasadena High School is worth while

to every visitor; there are no exercises elsewhere which equal it—in the great Rose Bowl of Pasadena, which is made into a lovely garden, the graduating students present a historical pageant depicting the development of education.

Outdoor symphonies, in Hollywood Bowl, Los Angeles, are conducted four nights every week during July and August. The music is exceptionally good, and the environment in which it is rendered—beneath the starry skies—creates an atmosphere of



The Bay at Catalina—Haven for Pirates in the Old Days

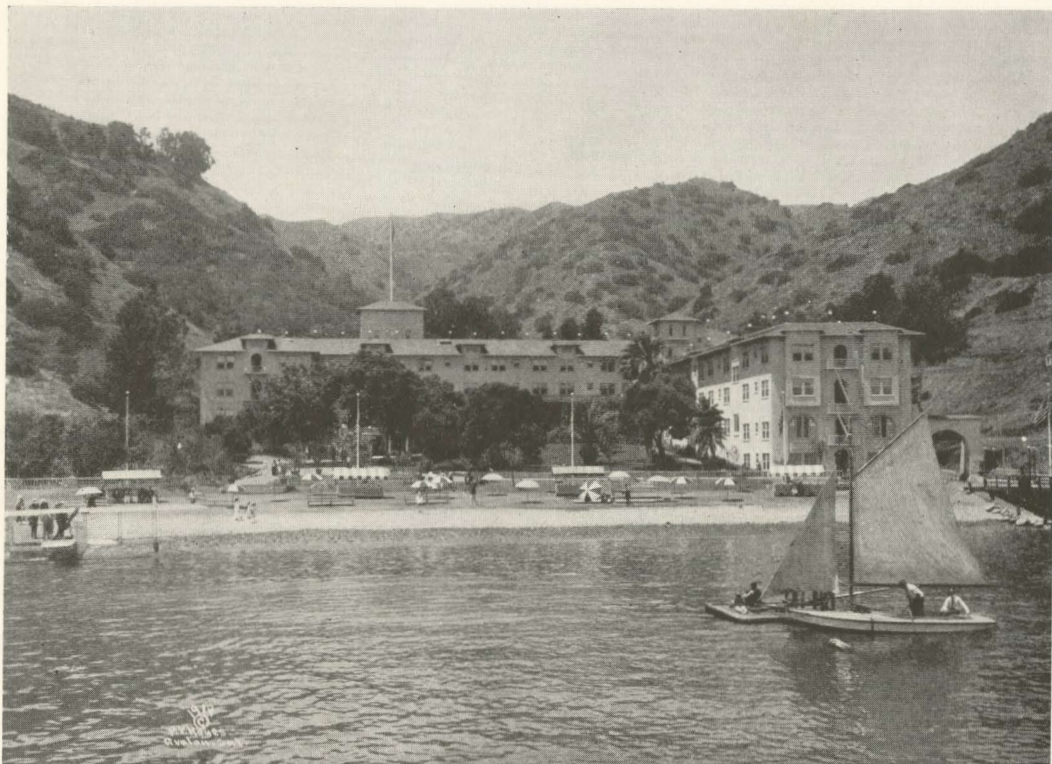
enchantment and romance. The great Bowl, a natural amphitheater, accommodates 20,000 persons.

The Pilgrimage Play starts its season early in July and continues until September. This presentation depicts the life of Christ; it has been called the Oberammergau of America.

The Old Spanish Days Fiesta, the Dahlia Show at Santa Barbara, the Tournament of Lights at Balboa are among the most interesting events of August. The

Tournament of Lights features decorated yachts and boats of all kinds in parade across beautiful Newport Bay. The colorful lighting effects on the boats, mirrored in the smooth waters of the bay, produce a charming, fascinating effect.

County fairs throughout Southern California are held during September. In the following months flower fiestas, pageants and festivals are held. Of especial note is the Tahquitz Pageant at Palm Springs, portraying an ancient Indian legend in a setting of



A Part of Avalon Bay, Santa Catalina Island, California

oasis and desert — especially appropriate for the story. This event usually is presented in November.

Healthful Mineral Springs

• In virtually every county of Southern California one finds numerous mineral springs. Resorts have flourished about them, and many of the better golf courses and polo grounds are near the springs. They are noted for their health-building qualities as well.

Doctors often prescribe the Southern California springs as a means to regaining vigor and energy; the diverse chemical properties of the various springs enable one to obtain the treatment which will provide the chemicals specifically prescribed. There are sulphur and iron springs, radio-active waters, soda and volcanic springs and mud baths.

Complete information regarding the specific attractions of each "watering place" may be secured from the Los Angeles Chamber of Commerce.



"Mary and Doug" on Their Veranda, Beverly Hills

The High Sierras

North of Los Angeles, beyond the Sierra Madres, is the region of the High Sierras, one of nature's rarest virgin playgrounds. Almost three hundred rugged peaks towering more than 13,000 feet above sea level; three thousand shimmering lakes nestling in a wilderness little known to man; leaking water falls and cascades; vast primeval forests—all these have won for the High Sierras the breathless admiration

of those who have visited in this natural wonderland.

From Mt. Whitney, altitude 14,502 feet, you can view Death Valley, 280 feet below sea level. Bishop, gateway to the High Sierras, is nine hours distant from Los Angeles by motor. The journey by rail is made to Lone Pine, at the foot of Mt. Whitney, thence by motor stage.

Beach Cities

From Los Angeles southward through San Diego to the Mex-



You May Watch Your Favorite Star Make Pictures

ican border the coast is lined with beach cities offering bathing, yachting, deep-sea fishing.

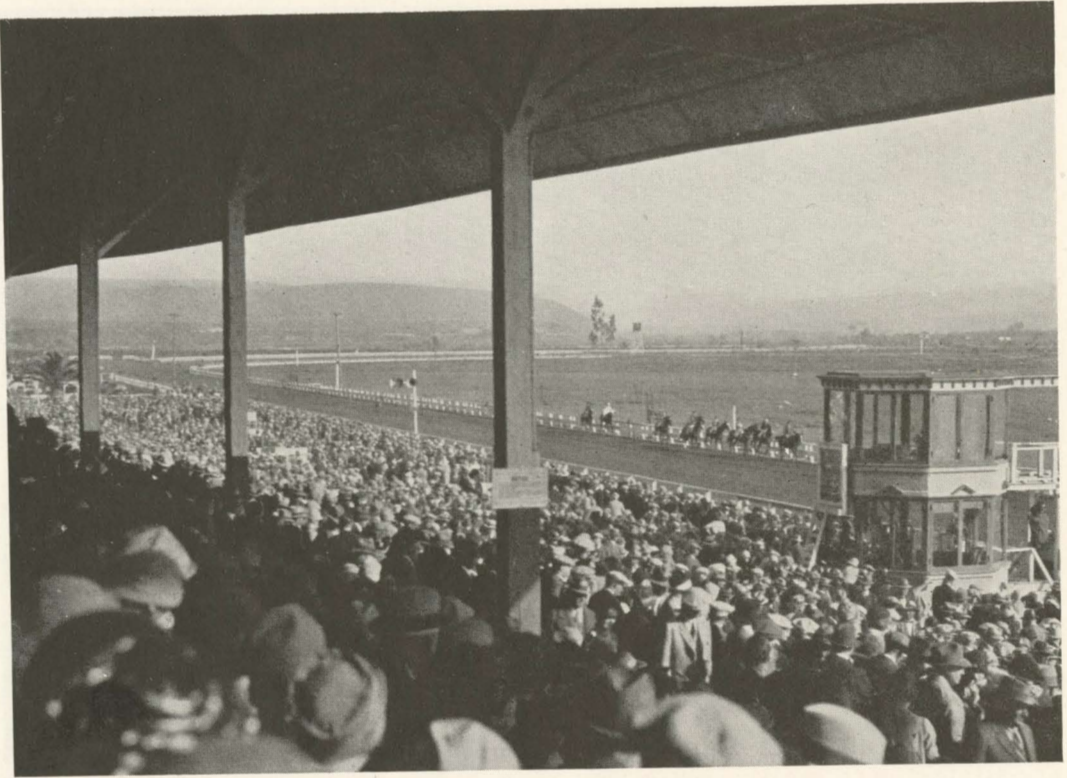
Along the seaboard are scores of golf courses; some of the holes are played where a careless hook (or slice, on occasion) will send your ball hurtling over a cliff into the roaring surf.

From San Diego it is only a brief journey across the Mexican border to Tia Juana, famed for its horse races, its gambling houses and its buildings which house long counters with brass rails attached — counters no

longer displayed in the United States.

Accommodations

There are accommodations in California to suit every taste and every purse. Luxuriously appointed hotels, richly decorated apartments, modest bungalows, camps and tent cities are found at all points of interest throughout the state. Meals on both American and European plans are available. A list of representative hotels and resorts with their rates may be found in the leaflet enclosed in this booklet.



"Tia Juana" Track, Famed in the Annals of Racing History

Climatic Conditions

In the lowlands of Southern California the climate is unusually dependable and enjoyable. The United States Weather Bureau in Los Angeles offers figures supporting the following averages:

There are only 10 days in a year without sunshine. Only 39 days during which any rain falls; only 16 of these showing a precipitation of more than a quarter of an inch. Only 29 days in a year

with one hour or more of dense fog. Tornadoes and other violent storms are unknown. Thunderstorms average three per year. Snow, except in the mountains, has never fallen in appreciable quantities. Records show that on only 12 days during the year the thermometer goes above 90 degrees; only 13 days with a temperature below 40 degrees.

The Weather Bureau at Los Angeles was established in 1877; the above figures are based on an average from 1877 to 1926.



Romantic Days When the Annual "Old Spanish Days Fiesta" Is Held in Santa Barbara



Civic Center from Steps of State Capitol, Denver

MISSOURI PACIFIC LINES

Provide Two Routes to CALIFORNIA



SINCE California is an all-year playground, there is an advantage to travelers in a distinct choice

of routes—one through Colorado, Utah and Nevada; the other through Arkansas, Texas, Arizona and New Mexico.

Northern Route

The Scenic Limited

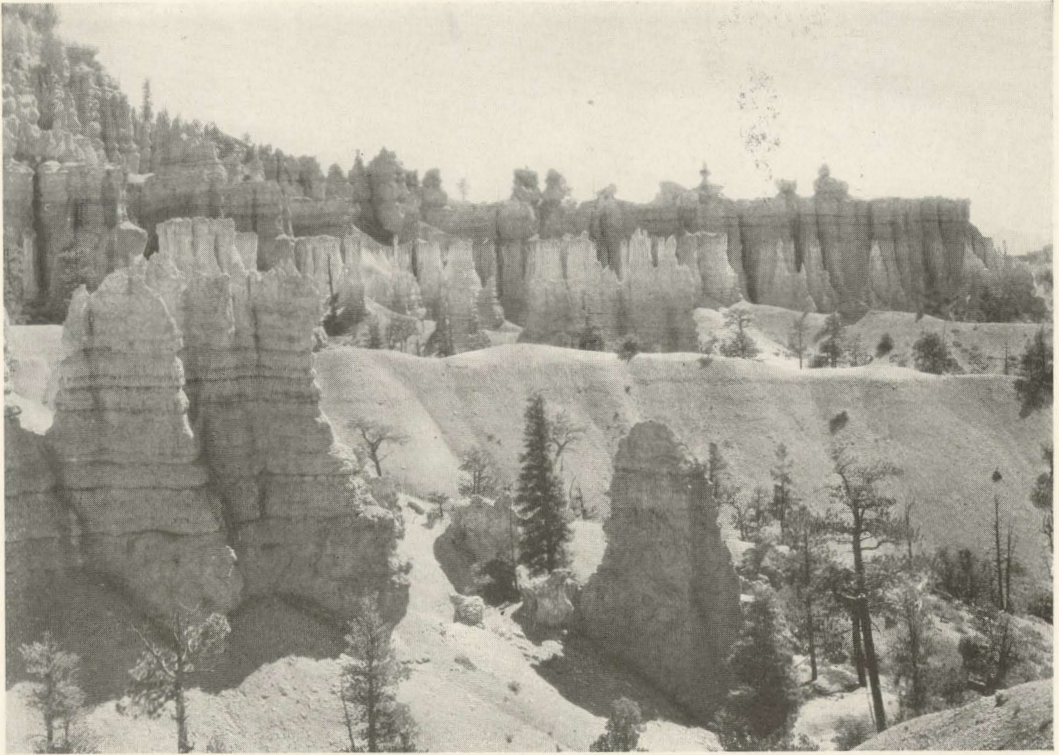
MISSOURI / KANSAS / COLORADO / UTAH / NEVADA / CALIFORNIA

From St. Louis and Kansas City, Missouri Pacific Lines provide splendid daily train service

to California, *offering, without extra rail fare, opportunity to visit the scenic wonders of Colorado, in-*



Looking Down into Royal Gorge—Your Train Passes Through Its Depths



Weird Giants of Nature in Bryce Canon, Southern Utah

teresting Salt Lake City, Utah, and the colorful scenic regions between Salt Lake City and San Francisco!

For only slight additional fare, side trips to Yellowstone Park, to Zion National Park, Bryce Canon and the North Rim of the Grand Canon may be made.

This is truly the *outstanding scenic way west.*

Across the rolling plains of Kansas to Pueblo (a side trip may be made to Colorado Springs and Denver without additional fare), westward through Royal

Gorge, to Glenwood Springs, thence to Salt Lake City.

Here, for slight additional cost, you may visit Yellowstone National Park, Bryce Canon, Cedar Breaks and other points famed for scenic beauty, return to Salt Lake and resume your journey west, across Nevada, through colorful Feather River Canon and Sacramento to San Francisco and the Golden Gate.

Stopovers are permitted anywhere en route, going or returning.



Sunset on Great Salt Lake, Near Salt Lake City, Utah

Missouri Pacific Lines service includes modern all-steel observation Pullman trains and Missouri Pacific dining service which we strive to make superior to any other.

The hospitality and the rich appointments of The Scenic Limited will delight you. The spacious observation car, equipped with comfortable chairs, a writing desk, where you will find the latest magazines, lends ease and enjoyment to your journey. A telephone is installed while the train is in St. Louis Union Station.

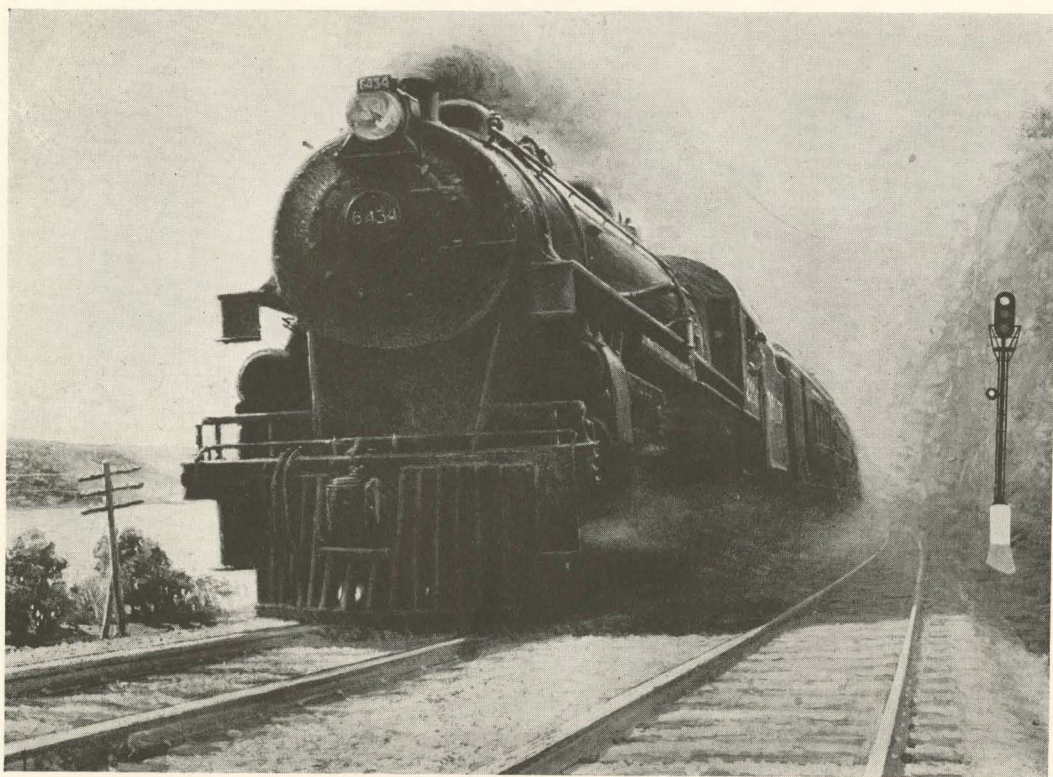
The Pullmans are upholstered in gray—a departure from the orthodox green which is in general use. Special effort is made to approach perfection in dining service; only thoroughly experienced waiters serve on The Scenic Limited. The dining cars are of latest design.

Quickened schedules are effective during the summer season, providing faster, more convenient service for the summer tourist.

No extra fare is charged.



You'll Be Enchanted by Gorgeous Vistas in Feather River Canon



The Internationally Famous "Sunshine Special"—Southern Route

Southern Route *The Sunshine Special*

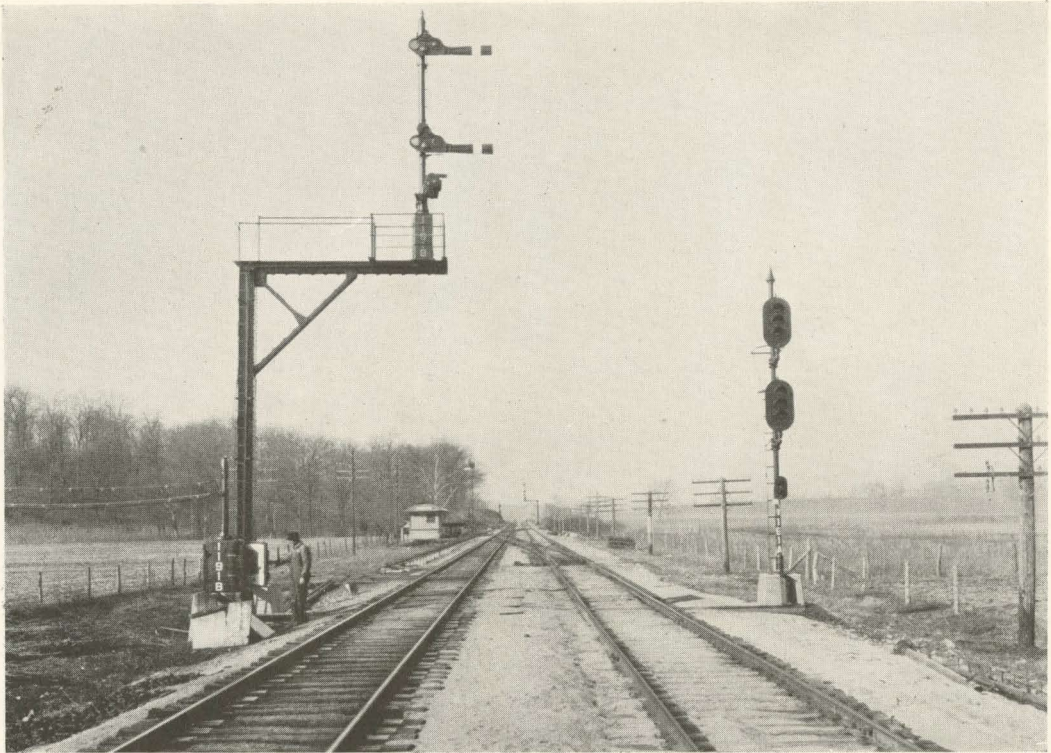
Unequaled for southern travel to California. Through service from St. Louis and Memphis to Los Angeles, via Dallas, Ft. Worth, El Paso and Tucson.

This service is especially appealing to the traveler from St. Louis or the North and East, since it provides an intimate close-up of the Southland as it is today. The cotton fields with their quaint, chimneyed negro

"shanties" are in striking contrast to the progressive, attractive cities.

For eleven years The Sunshine Special has served between St. Louis and the Southwest; it shares honors with The Scenic Limited as leader of the Missouri Pacific Lines fleet of fast passenger trains.

You will enjoy every minute of your journey westward on The



Miles of Double Track, Automatic Block Signals Insure Safety

Sunshine Special. The courtesy of its attachés, the smooth, fast, well-equipped train, the interesting cities and towns, contribute to your pleasure.

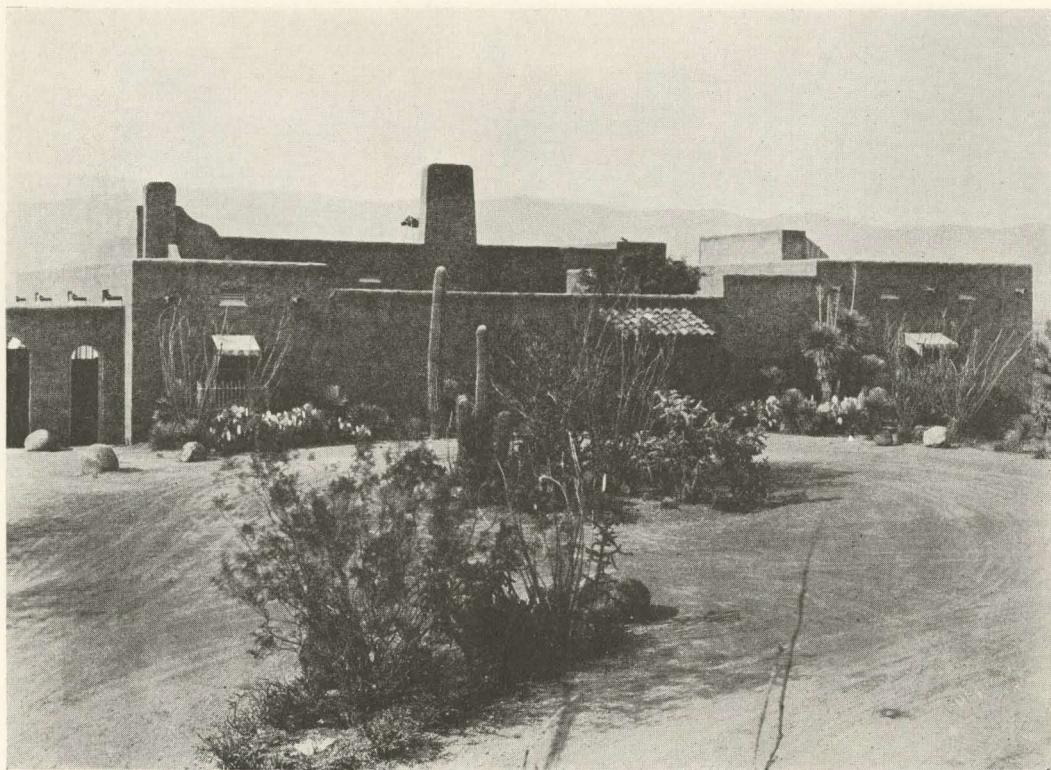
The Sunshine Special is especially distinguished for its dining service — in serving the South it has acquired an air of Southern hospitality. Delicious Southern-style cooking is featured.

• Stopovers are permitted at Little Rock or Benton for side trip to famed Hot Springs National Park. At El Paso one

may arrange to visit Juarez, Mexico. In Arizona side trips to Roosevelt Dam, Phoenix and other points may be made at slight additional cost.

Carlsbad Cavern

Carlsbad Cavern, in the southeastern part of New Mexico, is the most fascinating and inspiring underground phenomenon in the world. The cavern has been named a national monument by President Coolidge; while long known locally, the National Geographic Society (National Geo-



Along the "Sunshine Route" Through Arizona

graphic Magazine, January, 1924, and September, 1925, is responsible for winning national recognition for the cave.

The cavern abounds with unique formations, wrought during bygone centuries. The photograph on the following page shows a formation in the corner of the "Big Room"—from this immense subterranean auditorium, winding corridors lead to other smaller vaults which contain all manner of stalactites and stalagmites, bottomless pools, and weird formations of rock and stone.

On the Southern Route to California, stopover is permitted for side trip to this national monument; a visit is decidedly worth while.

Accommodations for tourists at the monument are of the highest order. Inns are comfortable and serve excellent meals; there is a camp ground where you may find more moderate accommodations.

Half the charm of your trip to California depends on the route you select to reach that golden empire. Seasoned travelers favor



Twin Domes and Giant Stalagmite, Big Room, Carlsbad Cavern



California's Capitol and Grounds, Sacramento

the Missouri Pacific Lines because they offer the utmost in travel comfort, in scenic beauty and in genuine enjoyment.

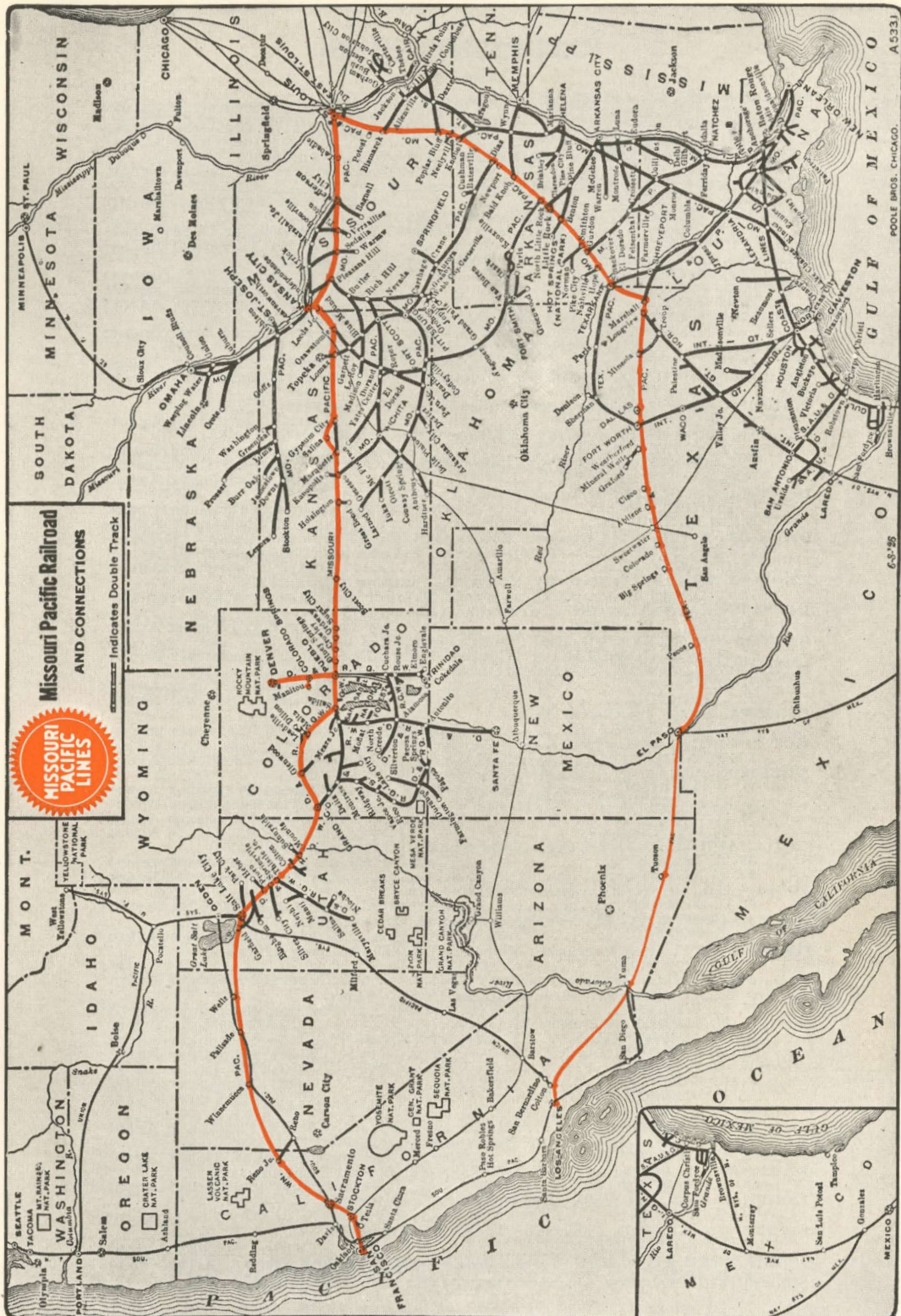
Missouri Pacific Lines publish illustrated booklets descriptive of many other western vacation lands. Write for the booklets in which you are interested. The list includes "San Isabel National Forest, Colorado"; "Rocky Mountain National Park, Colorado";

"Colorado"; "Yellowstone Park and Southern Utah." One or all of these will be sent without charge immediately on receipt of your request.

Communicate with nearest Missouri Pacific representative (listed on following pages) for complete information regarding how to get the most from your trip to California. He will gladly assist in every way possible.



Mission de los Dolores, Dedicated to San Francisco de Assisi, 1776



REPRESENTATIVES

ATLANTA, GA., 532-533 Healey Building (Walnut 2422)
 GARLAND TOBIN.....General Agent, Passenger Department
 J. C. GRAVES.....Assistant General Agent, Passenger Department
 N. B. NICKERSON.....City Passenger Agent

AUSTIN, TEXAS, Stephen F. Austin Hotel (Phone 7755 and 6096)
 M. L. MORRIS.....City Passenger and Ticket Agent

BEAUMONT, TEXAS, Beaumont Hotel (Phone 1400)
 SAM L. O'BAUGH.....City Passenger and Ticket Agent

BIRMINGHAM, ALA., 1009-1010 Woodward Building (Phone 3-3376)
 D. D. GOFF.....General Agent, Passenger Department
 J. F. DOLLINS.....City Passenger Agent

CHICAGO, ILL., Room 610, 112 West Adams Street (State 5131)
 J. J. McQUEEN.....General Agent, Passenger Department
 H. L. FOUNTAIN.....City Passenger Agent
 R. H. LePELL.....City Passenger Agent

CINCINNATI, OHIO, 203 Dixie Terminal Building (Main 5383)
 A. F. TINSLEY.....General Agent, Passenger Department

CLEVELAND, OHIO, 611 Park Building (Main 340)
 J. W. CERNY.....Traveling Passenger Agent

COLORADO SPRINGS, COLO., Consolidated Ticket Office, 125 East Pikes Peak
 Avenue (Main 163)

CORPUS CHRISTI, TEXAS, 422 Peoples Street (Phone 1340)
 W. B. CRAIG.....City Ticket Agent

DALLAS, TEXAS, 1608-9 Kirby Building (Phones 7-4536 and 2-7968)
 L. B. SHEPHERD.....General Agent, Passenger Department
 C. L. SHORTRIDGE.....Assistant General Agent, Passenger Department
 HARRY S. VICK.....City Passenger Agent

DENVER, COLO., 515 Seventeenth Street (Main 4210)
 C. E. JOHNSON.....General Agent, Passenger Department
 MILO SANDBURG.....City Passenger Agent

DETROIT, MICH., 6-243 General Motors Building (Phone Northway 5123-5124)
 L. M. WHITE.....General Agent, Freight and Passenger Department
 E. O. NILES.....District Passenger Agent

EL PASO, TEXAS, 204 Railway Exchange Building (Main 3537)
 B. C. DOOLEY.....General Agent, Freight and Passenger Departments

FT. SMITH, ARK., 523 Garrison Avenue (Phone 317)
 JOSEPH WEISIGER.....City Passenger and Ticket Agent

GALVESTON, TEXAS, 407 22nd Street (Phones 124 and 86)
 E. M. WEINBERGER.....General Agent, Freight and Passenger Depts.

HARLINGEN, TEXAS, 422-426 Wittenbach Building (Phone 45 or 223)
 L. H. MOORE.....District Passenger Agent
 J. L. DENTON.....Passenger and Ticket Agent

HELENA, ARK., 324 Cherry Street
 H. C. JAMESON.....Soliciting Freight and Passenger Agent

HOT SPRINGS, ARK., (Phone 52)
 LEON NUMAINVILLE.....Passenger and Ticket Agent

HOUSTON, TEXAS, Rice Hotel Lobby (Preston 4044)
 D. W. MORRIS.....Division Passenger Agent
 GEO. S. BRUCE.....District Passenger Agent
 W. T. MORRISON.....City Passenger Agent
 C. E. LEWIS.....City Ticket Agent

INDIANAPOLIS, IND., 313 Merchants Bank Building (Riley 2894)
 W. J. FROST.....General Agent, Passenger Department
 M. F. MORAN.....City Passenger Agent

JOPLIN, MO., 106 W. Fourth Street (Phone 79)
 C. P. ELKINS.....City Passenger and Ticket Agent

KANSAS CITY, KAN., 541 Minnesota Avenue (Drexel 1784)
 G. H. FOOTE.....Agent, Union Ticket Office

KANSAS CITY, MO., Passenger Department, 630 Railway Exchange
 (Victor 6100)
 F. L. ORR.....General Passenger Agent
 City Ticket Office, 707 Walnut Street (Victor 6100)
 V. L. WULFF.....Division Passenger Agent
 J. M. HARDY.....City Passenger Agent
 H. B. NEWCOMB.....City Passenger Agent
 C. E. CARRIGAN.....City Passenger Agent
 F. H. FISHER.....City Passenger Agent
 J. B. GILL.....City Passenger Agent
 F. B. HERSCHBERGER.....City Ticket Agent

Union Station
 L. C. BROWNING.....Depot Passenger Agent

LAKE CHARLES, LA., Majestic Hotel Building (Phone 1781)
 L. B. MATHEWS.....City Passenger and Ticket Agent

LAREDO, TEXAS, Santa Isabel and Farragut Streets (Phone 464)
 J. M. DURBOROW.....Passenger and Ticket Agent

LINCOLN, NEB., 124 N. Twelfth Street (Phone B-3125)
 H. T. WILSON.....City Ticket Agent

LITTLE ROCK, ARK., Passenger Terminal (Phone 4-5181)
 C. K. BOTHWELL.....General Passenger Agent
 City Ticket Office, N. E. Corner Second and Louisiana Streets (4-1143-1679)
 F. R. PENNELL.....City Passenger and Ticket Agent

REPRESENTATIVES

(Continued)

LONDON, ENGLAND, Palmerston House, Bishops Gate
E. J. BRAY.....General European Agent

LOS ANGELES, CAL., 300 Central Building (Vandike 8867)
H. R. BINGHAM.....General Agent, Passenger Department

MEMPHIS, TENN., 273-274 Shrine Building (6-6542)
T. D. MOSS.....Division Passenger Agent
W. E. SHUEMAKE.....City Passenger Agent
T. J. DARRELL.....City Passenger Agent
74 Monroe Avenue (Phone 6-0101)
R. G. SUTTON.....City Ticket Agent

MEXICO CITY, MEXICO, Cinco de Mayo 6-A
L. R. JONES.....General Agent
W. M. HIPP.....Passenger Representative

MONROE, LA., New Virginia Hotel (Phone 2400)
B. S. BETTS.....City Passenger and Ticket Agent
C. S. WEAVER.....Assistant City Passenger and Ticket Agent

MONTERREY, MEXICO, Zaragoza and La Corregidora Street
E. F. SADA.....General Agent, Freight and Passenger Department

NEW ORLEANS, LA., City Ticket Office, 207 St. Charles Street (Main 0661)
MARK ANTHONY.....Division Passenger Agent
GUY WILSON.....City Passenger Agent
A. HARBOUR.....City Passenger Agent
MISS HELEN RODDY.....City Ticket Agent
E. E. GREER.....Depot and S. S. Passenger Agent

NEW YORK, N. Y., 811 Brokaw Building, 1457 Broadway (Wisconsin 2181-82)
D. I. LISTER.....General Agent, Passenger Department
CHAS. A. PARKER.....City Passenger Agent
C. W. DENNIS.....City Passenger Agent
JAMES J. QUINN.....City Passenger Agent

OMAHA, NEB., 1419 First National Bank Building (Jackson 4543)
I. G. MILLER.....District Passenger Agent
T. F. GODFREY.....Division Passenger Agent
W. T. YOHN.....City Passenger Agent
311 S. Sixteenth Street (Atlantic 9888)
W. C. FORCADE.....Agent, Union Ticket Office

PINE BLUFF, ARK., Mo. Pacific Station
J. A. WILLIAMS.....City Passenger Agent

PITTSBURGH, PA., 477-479 Union Trust Building (Atlantic 3820-21)
W. H. RICHMOND.....General Agent, Passenger Department
R. R. MOFFITT.....City Passenger Agent

PUEBLO, COLO., 100 S. Union Avenue (Phone 183)
C. M. COX.....City Passenger Agent
109 W. Fourth Street (Phone 1906)
S. C. BAKER.....Agent, Consolidated Ticket Office

SALT LAKE CITY, UTAH, Room 232 Judge Building (Wasatch 4028-9)
DUDLEY BAKER.....General Agent, Passenger Department
ALLEN N. ROBINS.....City Passenger Agent

SAN ANTONIO, TEXAS, 306 City National Bank Building
E. A. FARR.....Assistant General Passenger Agent
605 Navarro Street
J. C. WOODWARD.....District Passenger Agent
J. F. SMITH.....City Passenger Agent
J. O. BELL.....City Ticket Agent

SAN FRANCISCO, CAL., 395 Monadnock Building (Sutter 5876)
ELLIS FARNSWORTH.....General Agent, Passenger Department

SEATTLE, WASH., 510-11 White Building (Elliott 2985)
C. M. FOWLER.....General Agent, Freight and Passenger Departments

SEDALIA, MO., Missouri Pacific Passenger Station
F. A. WILSON.....Depot Ticket Agent

SHREVEPORT, LA., 910 City Bank Building (Phone 2-5773)
DIXIE HANNIBAL.....General Agent, Freight and Passenger Departments
S. LOWE.....City Passenger Agent

ST. JOSEPH, MO., 307-8 Corby-Forsee Building (Phone 6-2265)
N. A. BEACH.....Division Passenger and Freight Agent

ST. LOUIS, MO., Passenger Department, 1650 Ry. Exchange Bldg. (Main 1000)
W. F. MILLER.....Division Passenger Agent
A. J. CONNORS.....City Passenger Agent
C. E. SALE.....City Passenger Agent
J. G. H. CAMPTON.....City Passenger Agent
A. R. SPANGENBERG.....City Passenger Agent
C. G. DICKE.....City Passenger Agent
Union Station
W. F. VITT.....Station Passenger Agent
City Ticket Office, 318 N. Broadway (Main 1000)
F. W. SCHWANECK.....City Ticket Agent

TAMPA, FLA., 1007 First National Bank Building (M-6782)
R. W. MOSS.....Commercial Agent, Freight and Passenger Departments

TAYLOR, TEXAS, First and Porter Streets (Phone 234)
C. McKAY.....Passenger and Ticket Agent

WICHITA, KAN., Missouri Pacific Passenger Station, Douglas and Wichita Streets (Market 469-470)
M. S. KITCHEN.....General Agent, Passenger Department

