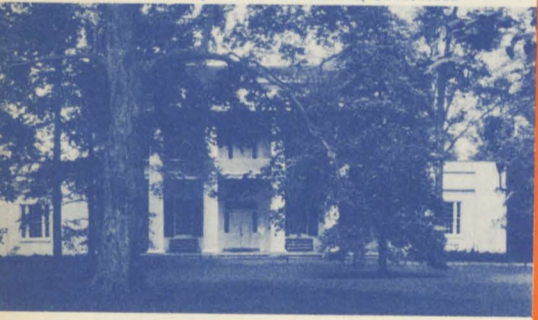


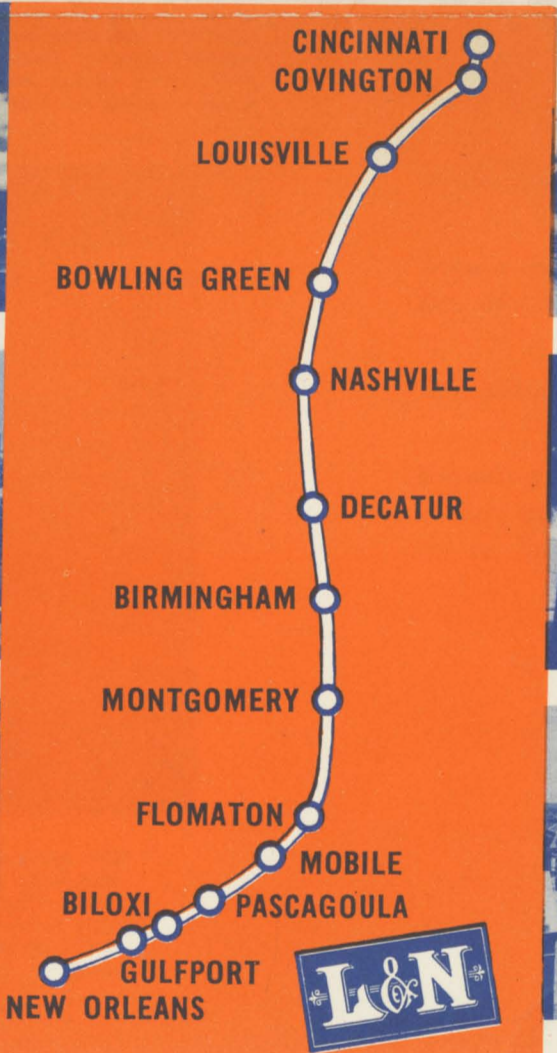
CINCINNATI UNION TERMINAL



KENTUCKY DERBY, CHURCHILL DOWNS, LOUISVILLE



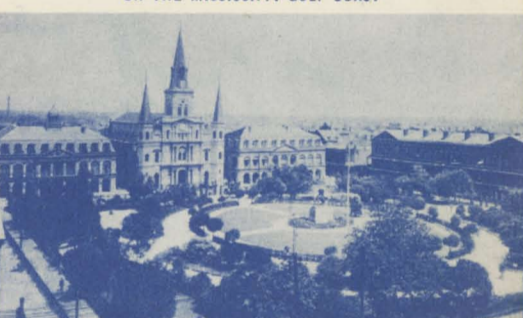
THE HERMITAGE, HOME OF ANDREW JACKSON, NASHVILLE



STEEL MILLS, BIRMINGHAM



ON THE MISSISSIPPI GULF COAST



JACKSON SQUARE, NEW ORLEANS

The Humming Bird

THE MODERN ALL-COACH TRAIN
BETWEEN
CINCINNATI AND NEW ORLEANS

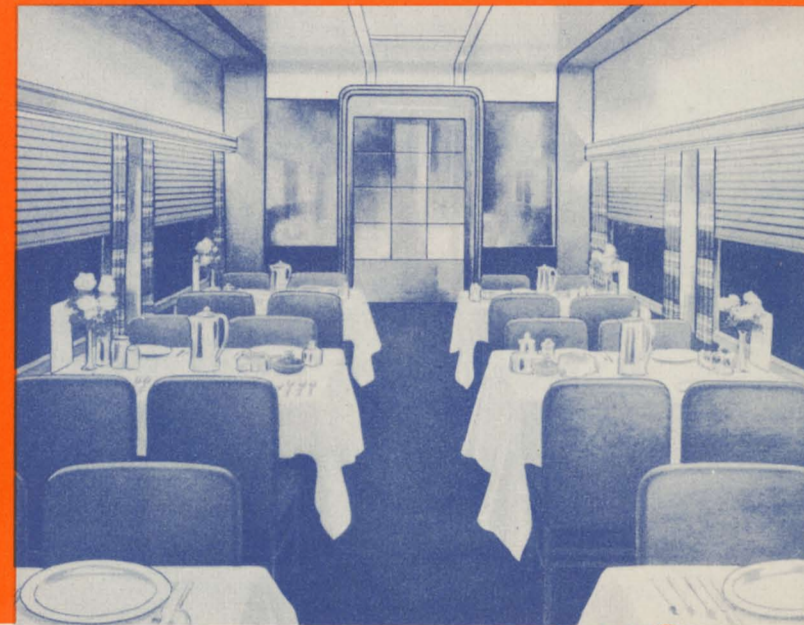
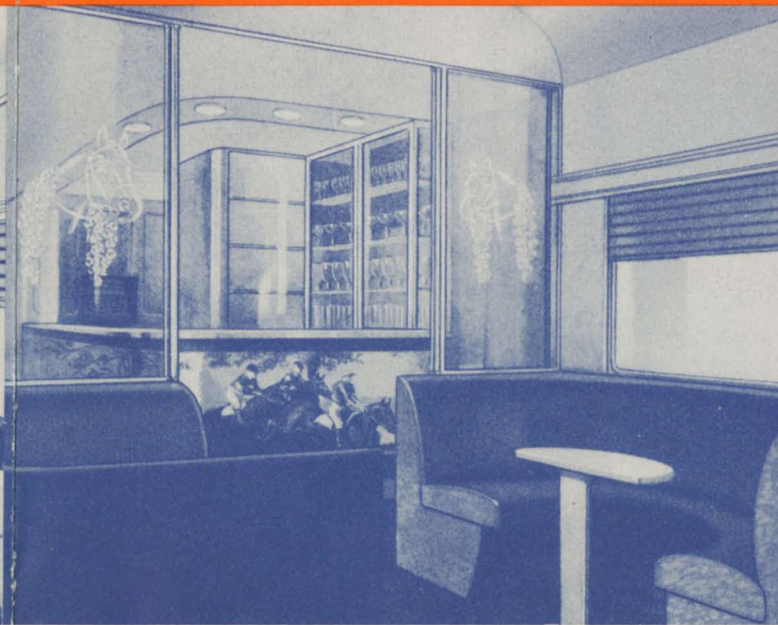
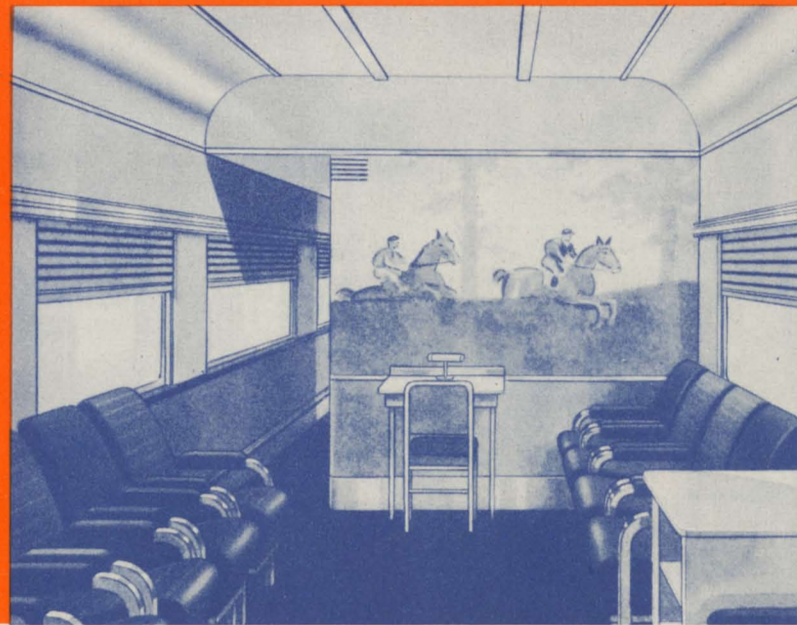


1 1/2 CENT
STAMP HERE

TO: _____

MODERN • COMFORTABLE • ECONOMICAL • SAFE

FAST AND DEPENDABLE SERVICE



Quiet beauty, luxury and comfort are the keynotes of the coaches. Deep reclining and revolving seats, large full-vision windows, wide and roomy luggage racks with individually controlled fluorescent lighting, a public address system in each car for station and other announcements, music, etc., are some of the features of the coaches. Soft blends of varying shades of brown and red, set off by pale ivory, are the interior decorative scheme.

The lounge section of the tavern-lounge car achieves a club-like atmosphere with its intimate grouping of deep and comfortable chairs interspersed with two-place sofas at random locations. The arrangement is cleverly divided by the use of glass partitions located between the wide windows. Twenty-eight persons can be seated in this pleasantly decorated car.

A tavern section, seating 24 passengers, is separated from the lounge section of the tavern-lounge car by a glistening curved bar, complete with all appurtenances. This inviting room has two friendly built-in horseshoe settees at each end, with two intimate bridge groupings between. The bar is partitioned from the tavern section by etched glass.

Tasty food, expertly prepared and deftly served in delightful surroundings will be experienced by travelers in these dining cars. Soft fluorescent lighting, extra wide windows, full length mirrors and air diffusers to eliminate all kitchen aromas add to the patron's pleasure. Reds and browns in the color scheme are strengthened by light fawn upholstery and rich-hued dark maroon carpeting. Ivory walls, the light gray beamed ceilings and cocoa window drapes complete the picture.

The Humming Bird is here! It's the train you've been dreaming of.

SPEED that takes you to destination quickly.

SAFETY for which railroad travel is famed.

COMFORT that can be found only in soft, adjustable seats, restful color schemes, subdued fluorescent lighting, wide vision windows, roller bearings, well equipped washrooms, capacious luggage racks, a public address system and trained attendants.

SOCIABILITY that permeates the luxurious tavern lounge car where one may read, write letters, chat in comfort, enjoy a cool drink from the bar,

or just relax and watch the scenery.

DELICIOUS MEALS in the smart dining car at economical prices.

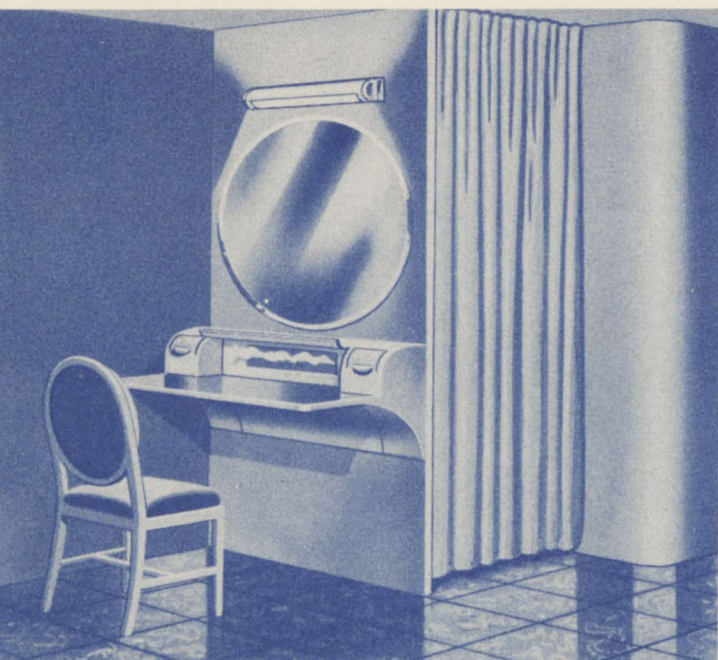
CONNECTIONS with trains to and from eastern points at Cincinnati, and, at New Orleans to and from the southwest and far west.

RESERVED SEATS in the coaches guarantee full accommodations to destination.

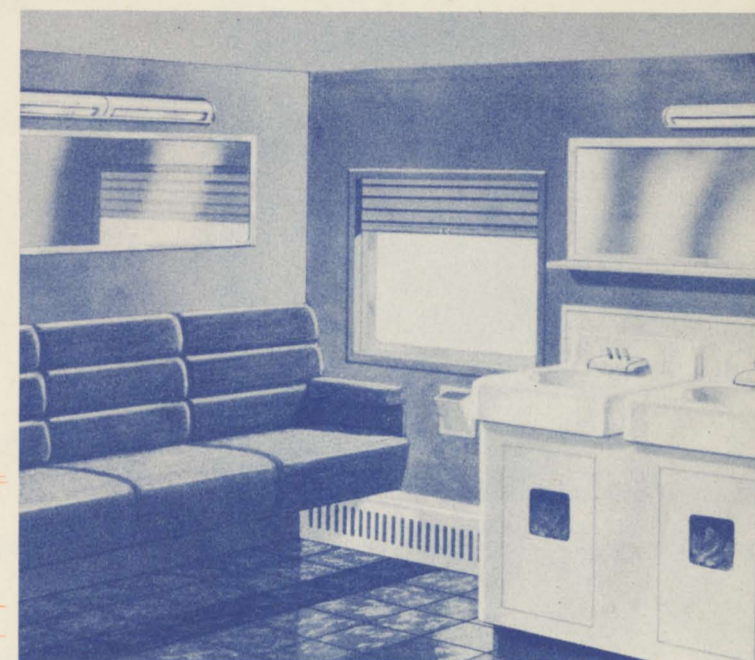
LOW COACH FARES, the same as are charged for coach travel on ordinary trains, bring you all the glories of *The Humming Bird* at extremely low cost.

LOUISVILLE & NASHVILLE R. R.

The Humming Bird



The rest rooms for women passengers are extra spacious, with every appointment for the convenience of the traveler. Included are a dainty vanity with built-in tissue dispenser and a large illuminated circular mirror. These tastefully decorated rooms contain three wash basins, a dental bowl, ash trays and other necessary facilities.



The men's rest rooms are conveniently arranged and attractively designed, providing all modern appointments. Illuminated mirrors, electric razor outlets, ash trays, comfortable seats for smokers, three wash basins and a dental bowl are among the features of these rooms.