

West

DECEMBER 1941

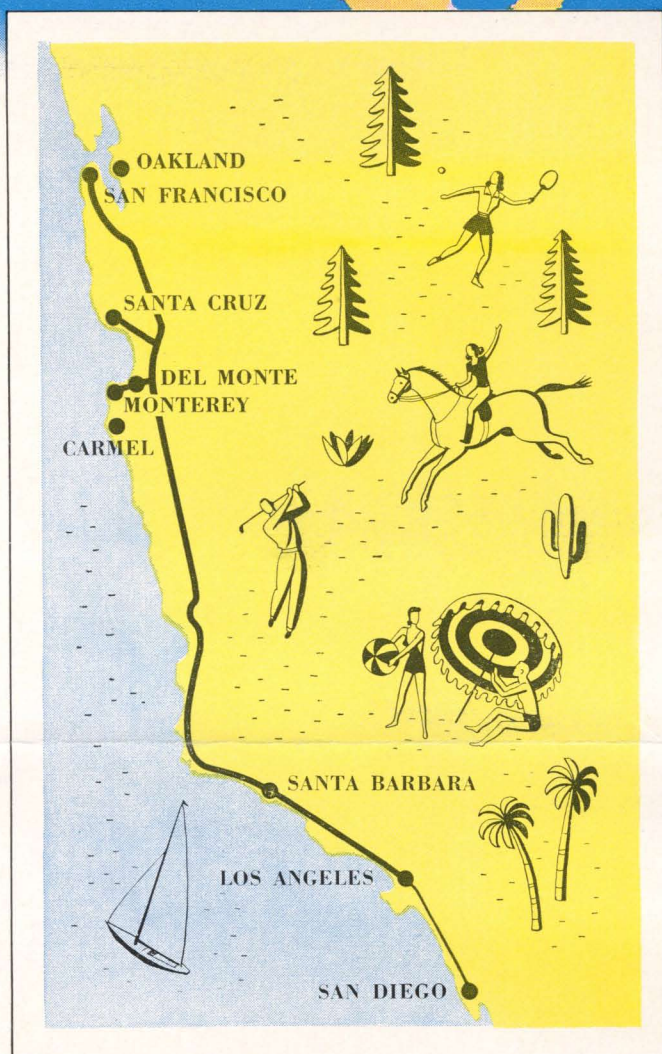
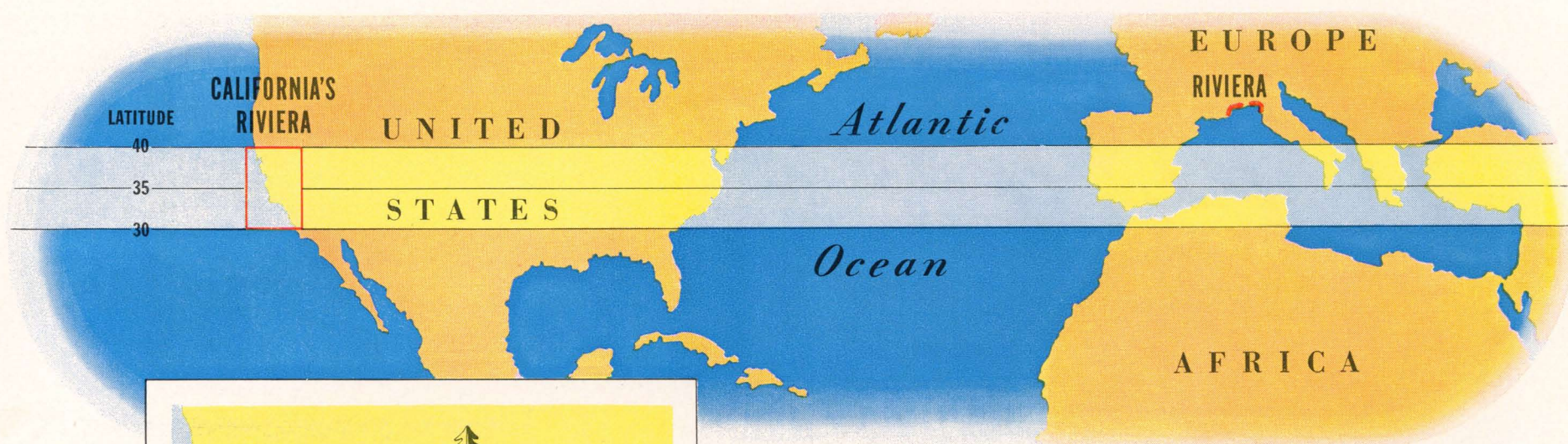


On the Cypress Point Links, near Del Monte

West VISITS CALIFORNIA'S RIVIERA

PUBLISHED BY

Southern Pacific



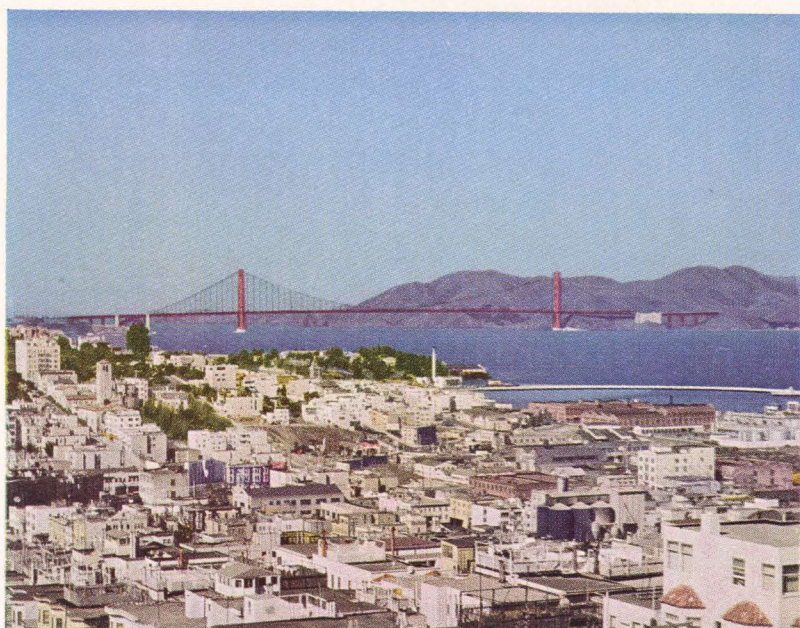
California's Riviera is South of Europe's!

TO MOST people, the Mediterranean and the French Riviera are synonymous with a warm, temperate climate. Few people realize that California's Riviera—the magnificent expanse of seacoast between San Francisco and San Diego—is far south of the French Riviera and lies in the same latitude as southern Spain and North Africa.

The climate in this region is remarkably mild—its mean temperature varying less than 10° throughout the year.

It is a seacoast of rugged headlands sheltering beaches of snow-white sand, of sapphire-blue water and charming cities and resorts . . . San Francisco, looking down from fourteen hills upon the Golden Gate and the world's two largest bridges; Oakland, San Francisco's lovely sister city across the Bay; Santa Cruz, at the northern end of the crescent curve of Monterey Bay; Del Monte, the world's largest resort, and Monterey, which was the capital of Spanish California; Pacific Grove and Asilomar; Carmel, where the artists live; Santa Barbara, a planned city of beautiful Spanish architecture; Los Angeles, with Hollywood and scores of beach resorts; San Diego, California's oldest city and the site of its first mission.

Most of California's Riviera is served exclusively by Southern Pacific Coast Line trains, including the famous streamlined *Daylights* and streamlined *Lark*. No other railroad runs along the California coast between Los Angeles and San Francisco.



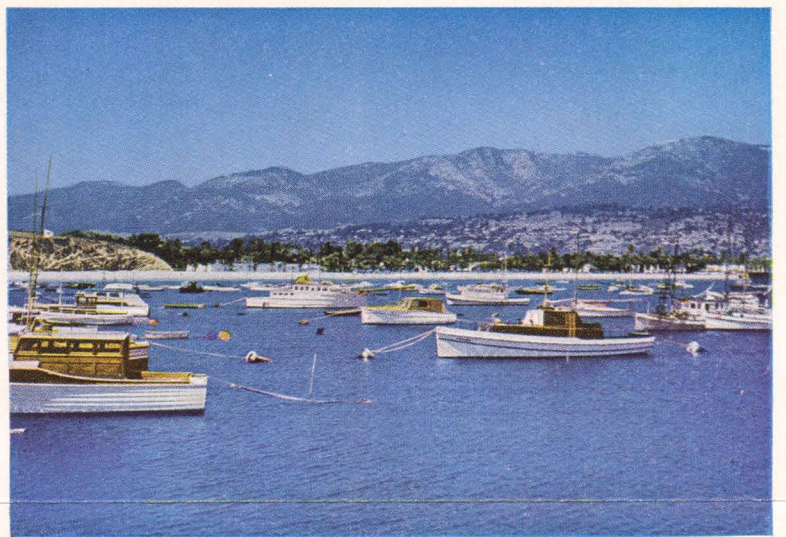
San Francisco is a truly fascinating city. Its Chinatown, Fishermen's Wharf and Golden Gate Park, its cable cars and sidewalk flower stands are loved throughout the world. The view above is from Telegraph Hill, looking toward the Golden Gate Bridge, world's longest single span.



Del Monte's main building (above) centers 20,000 acres of forest and seashore on California's Monterey Peninsula. While the resort is best-known for golf, it has superb facilities for tennis, swimming, riding, polo, shooting, fishing and about every other sport that you can think of.



Monterey Peninsula has five superb golf courses, including the championship Pebble Beach Links (above), Cypress Point, Monterey Peninsula and the original Del Monte course. Around the Peninsula, through forests of pine and gnarled cypress, winds the Seventeen-Mile Drive.



Santa Barbara's 92-acre Yacht Harbor (above) shelters the craft of the city's yachting enthusiasts. Notice how blue the water is. Santa Barbara Mission (left) was founded in 1770, is best-preserved of the California Missions. Its altar light has never been extinguished.



Along the beach at Santa Barbara runs a broad boulevard fringed with graceful palms. Santa Barbara is a residential and resort city. Beyond are Santa Ynez Mountains. From old Spanish days, the city has inherited the

art of living easily and gracefully. Santa Barbara was named by the Portuguese explorer Sebastian Viscaino, who entered the channel on St. Barbara's Day, December 4, 1603, hence called the region Santa Barbara.



Streamlined "Daylights" edge the Pacific Ocean for more than 100 miles.



Olvera Street in Los Angeles is an authentic bit of Old Mexico transplanted to Southern California. Here Mexicans ply the handicrafts of their native country. Below is a scene in downtown San Diego. The tall palm trees eloquently testify to the mild climate.



See California's Riviera on Southern Pacific's Streamlined "Daylights"

EVERY day, two Southern Pacific streamlined *Daylights* speed between San Francisco and Los Angeles along the California coast. The *Morning Daylight* leaves each city at 8:15 a.m. and arrives at 5:45 p.m. The *Noon Daylight* leaves each city at 12 Noon and arrives at 9:40 p.m. Both trains show you California's Riviera by daylight, and speed along the very edge of the Pacific Ocean for more than a hundred miles (see map).

Streamlined in red and orange, the *Daylights* are, in the opinion of many travelers, the most beautiful trains in the world. All seats are cushioned with foam rubber. Windows are five feet wide. Each train has a full-length Dining Car, Coffee Shop and Tavern Car.



If you prefer to travel at night between Los Angeles and San Francisco, you may ride the streamlined *Lark*, America's finest overnight train and the only train in the West with private room accommodations exclusively. You'll especially enjoy the sensational Lark Club, 131 feet of luxury for dining and lounging. The *Lark* leaves each city at 9 p.m. and arrives at 9 a.m. next morning.

S·P

The Friendly Southern Pacific

★ After "West" went to press the *Noon Daylight* was withdrawn from service for the winter months.