

"THE STREAMLINED TRAIN WITH THE SOUTHERN ACCENT"

*Southern Pacific proudly presents*

THE NEW **SUNSET LIMITED** NEW ORLEANS-LOS ANGELES

THE NEW **SUNSET LIMITED**

42 HOURS ★ NEW ORLEANS-LOS ANGELES

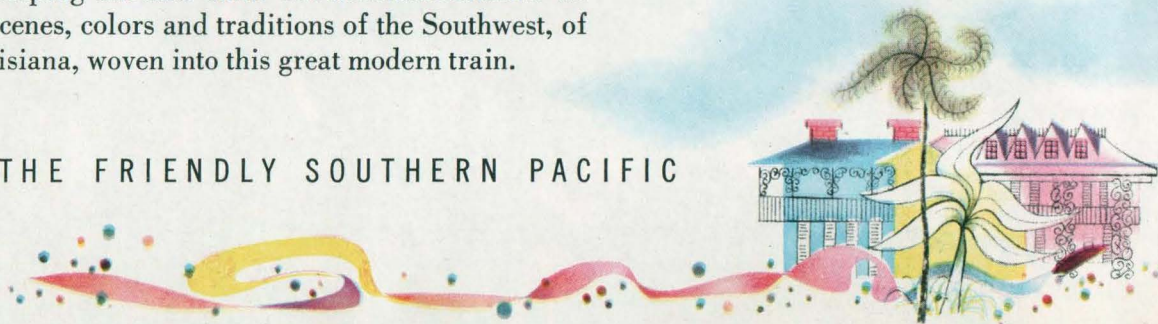


**S**outhern Pacific proudly presents the new Streamliner *Sunset Limited*, New Orleans-Los Angeles. Actually, we present five *Sunset Limiteds*, built for us by the Budd Company. With their great diesel power units they cost \$15,000,000.

The *Sunset Limited*, fastest in history on our Sunset Route, makes possible for the first time streamlined coast-to-coast travel "via the Old South" and at very little extra fare. It connects at New Orleans with streamlined service to and from Chicago, Cincinnati, New York, Washington and Florida. Through sleeping cars also are provided between Dallas and Los Angeles. At Los Angeles, it connects with other famed Southern Pacific Streamliners to San Francisco and the Pacific Northwest.

Turn the pages. Proudly we display the world's finest, new-designed Sleeping Car and Chair Car accommodations. We show you the scenes, colors and traditions of the Southwest, of Texas and Louisiana, woven into this great modern train.

**S·P** THE FRIENDLY SOUTHERN PACIFIC







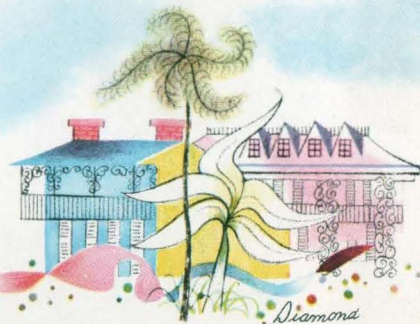




# *French Quarter* **LOUNGE**

The full-length lounge suggests the mood of New Orleans' famous Vieux Carré, but in a modern setting. White wrought-iron grillwork accentuates the old French Quarter feeling.

The watermelon-red ceiling lends a touch of Mardi Gras atmosphere.

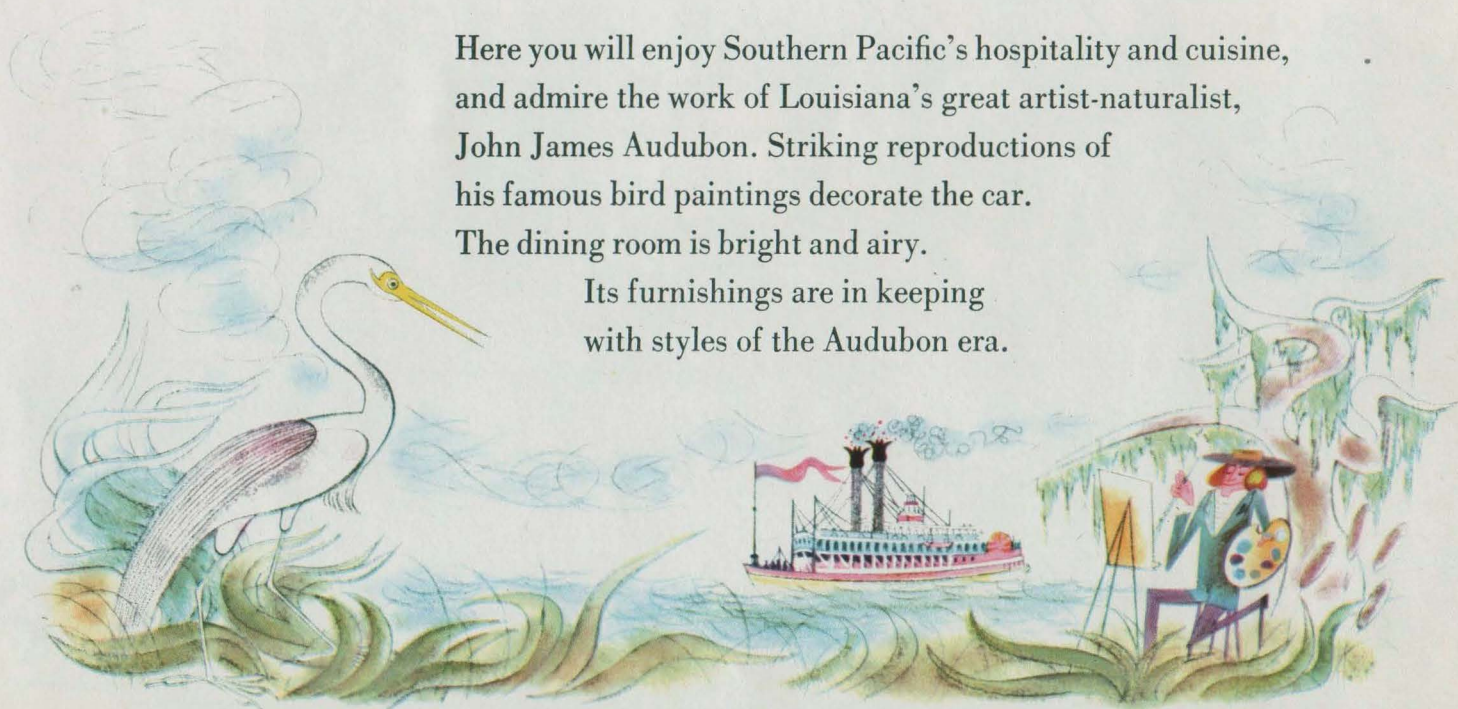


# *Audubon* DINING ROOM

Here you will enjoy Southern Pacific's hospitality and cuisine,  
and admire the work of Louisiana's great artist-naturalist,  
John James Audubon. Striking reproductions of  
his famous bird paintings decorate the car.

The dining room is bright and airy.

Its furnishings are in keeping  
with styles of the Audubon era.









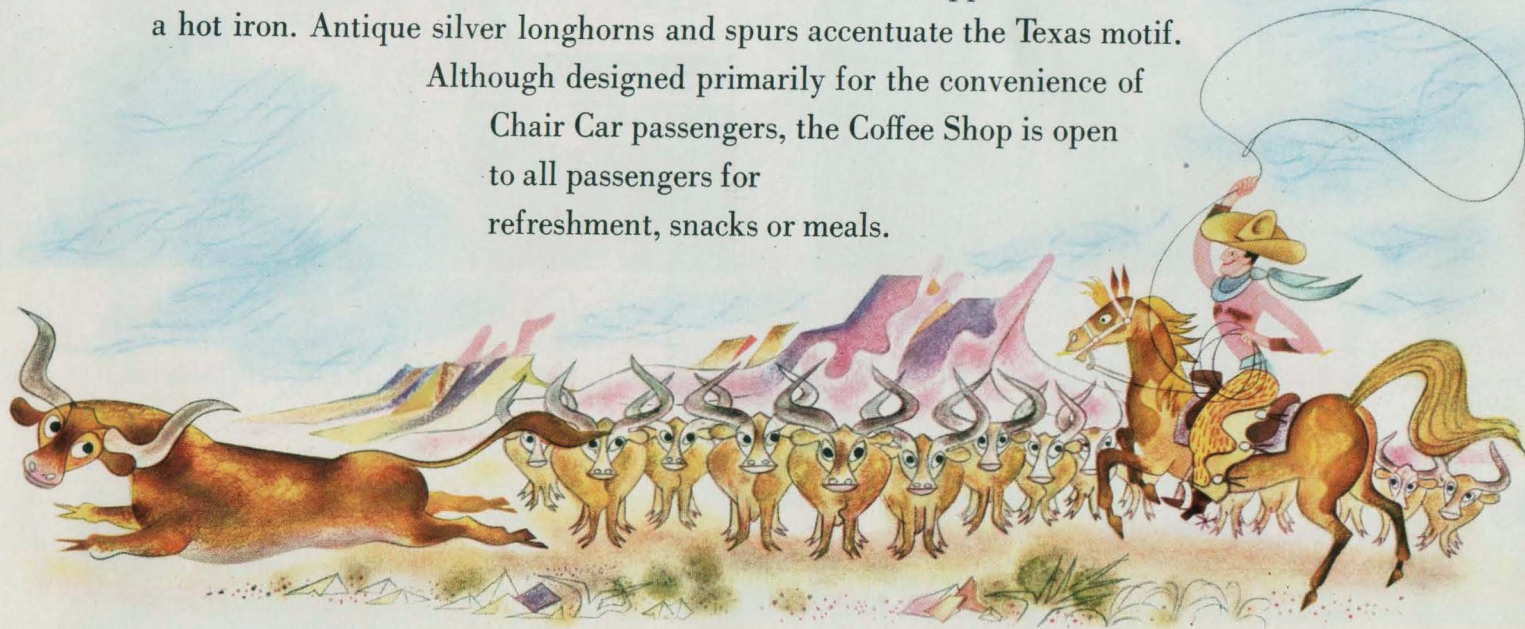




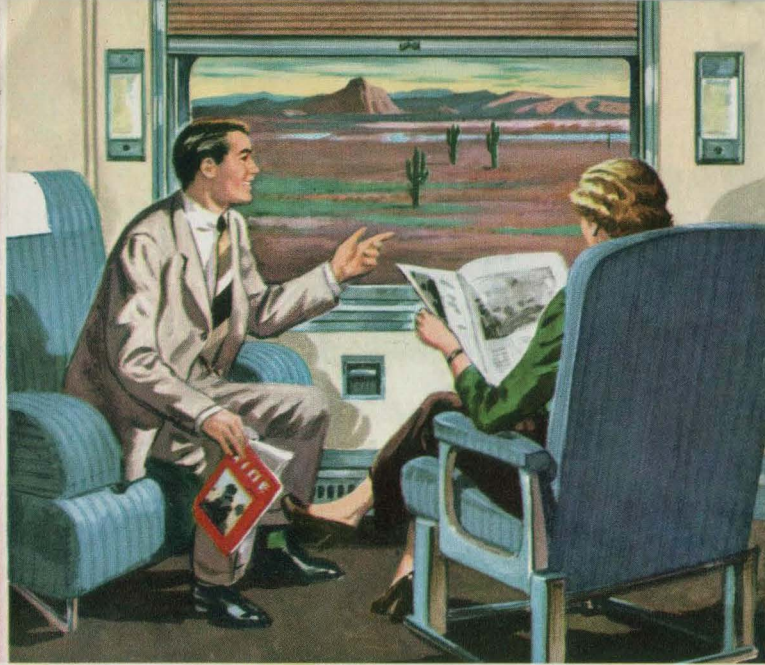
# *Pride of Texas* **COFFEE SHOP**

Here leather walls bear authentic pioneer Texas brands, applied with a hot iron. Antique silver longhorns and spurs accentuate the Texas motif.

Although designed primarily for the convenience of Chair Car passengers, the Coffee Shop is open to all passengers for refreshment, snacks or meals.







## BEDROOM TYPE BL (BEDS LENGTHWISE)

## BEDROOM TYPE BC (BEDS CROSSWISE)

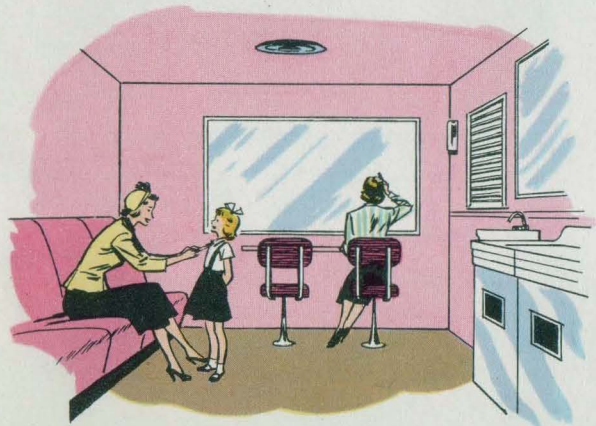
You have a choice of two types of bedrooms on the new *Sunset Limited*—Type BL (beds lengthwise) and Type BC (beds crosswise). Each type (for one or two persons) has private enclosed washroom, automatically-lighted clothes closet. Reading lights for beds may be reached easily while reclining. The *Sunset Limited* room accommodations embody many new refinements and improvements worked out by Southern Pacific and Budd designers and engineers.



## CHAIR CAR

This is the most luxurious of all low-cost transportation. Chaise longue-type leg rests and "Sleepy Hollow" chair design make an unbeatable comfort team. Extra large windows are glare-proof and designed to prevent fogging. Spacious washrooms.

Full-color photomurals of landmarks along our Sunset Route adorn the end walls.





# SUNSET LIMITED

# Comfort



**"ZONE CONTROL."** The wonderful new no-dust no-draft air conditioning gives you perfect temperature, winter or summer, anywhere in any car of the train.

**"BREATHER" WINDOWS** for your scenic pleasure. Always crystal clear. Can't fog or steam — and for your added safety they're shatterproof, too.



**"SLEEPY HOLLOW" SEATS** with chaise longue leg rests make the Chair Car on the *Sunset Limited* a drowsy delight. Finest ever designed.

**FLUORESCENT LIGHTING** throughout the train, of course. High intensity but no glare anywhere. New fluorescent lights in all Pullman rooms come on instantly.

**RUNNING ICE WATER** in all sleeping car accommodations, of course. Ice water fountains in Chair Cars.

**MIRRORS.** Mirror, mirror, on the wall — lots of them everywhere for the ladies. Spacious restrooms, also.



**"FEATHER TOUCH" DOORS.** They swing open automatically at a whim of your fingertip—make walking through the train a pleasant stroll!

**MAGIC STOPS.** Our special new disc brakes act so smoothly you may have to look out the window to know you've stopped! Super-smooth starts, too.



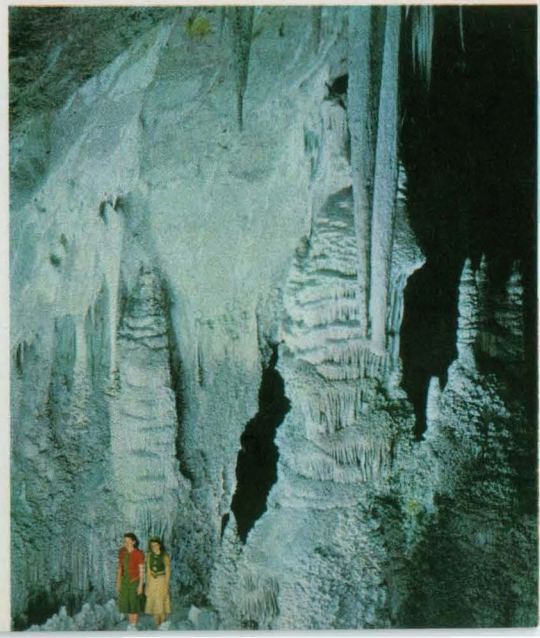
# SUNSET LIMITED *Scenery*



★ California's surf, palms, and mountains greet the *Sunset Limited* traveler.

★ Summer spends the winter at Southern Arizona's resorts and guest ranches.

★ New Mexico's great Carlsbad Caverns, world famous attraction, easily reached by sidetrip from El Paso.

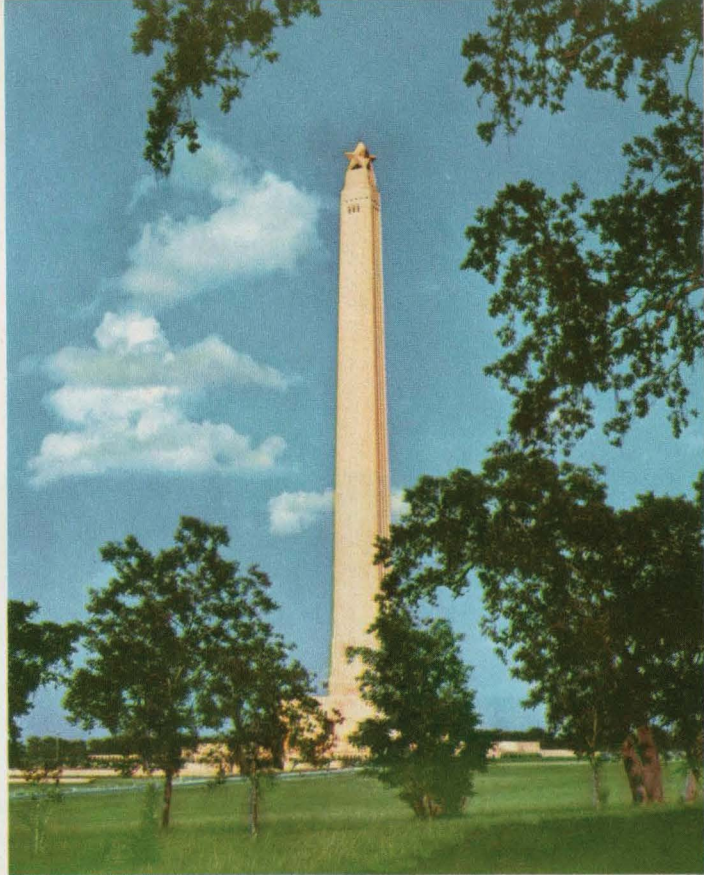






★ San Antonio's graceful outdoor River Theatre.

★ Hyacinths on a quiet bayou beside a Louisiana village.



★ The 570-foot San Jacinto battle monument near Houston.



★ Grilled balconies grace the old French Quarter, New Orleans.



★ The past, lovingly preserved in a New Orleans home.

★ Here French Quarter visitors buy delicious *pralines*.











just four feet less than a mile. This is one of America's pioneer railroad lines—the second through transcontinental railroad route in the United States. (The first was ours, too—the Central Pacific, now Southern Pacific.) The last spike was driven January 12, 1883, two and a half miles west of the Pecos River in Texas. Passenger trains began operating the follow-

ing month. The pictorial map, above, shows the route, cities and attractions served by the new *Sunset Limited*. For a more detailed map and description, write Southern Pacific, Room 735, 65 Market Street, San Francisco 5, California.

This route is also served by Southern Pacific's *Argonaut*, which provides Pullman and Chair Car accommodations. No extra fare.



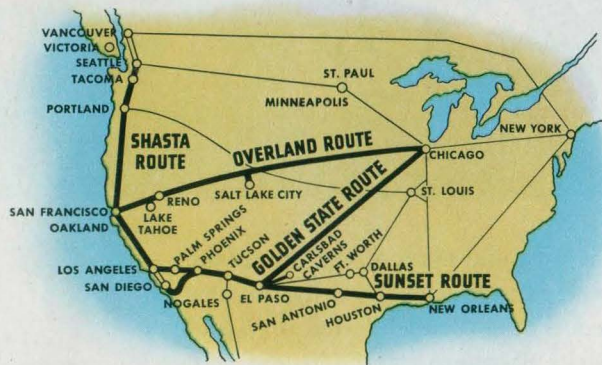
# Southern Pacific's **WONDERFUL WAYS WEST**

Our Sunset Route and our New *Sunset Limited*, proud though we are of them, are only part of the story of Southern Pacific, the greatest road of the great West.

We have, in fact, three other Wonderful Ways West. The little map shows them: (1) Our scenic Shasta Route between the Northwest and San Francisco. (2) Our midcontinent Overland Route, Chicago-San Francisco. (3) Our low-altitude Golden State Route, Chicago-Los Angeles via Arizona resort country.

Which will you have? Only Southern Pacific can send you by one of its routes, return you by another, *show you twice as much* on your roundtrip—and at no additional rail fare from most Midwest and Eastern points.

There are swift Southern Pacific streamliners to serve you on each of our Wonderful Ways West. Pleasant journey!





**S·P**

THE FRIENDLY SOUTHERN PACIFIC







THE FRIENDLY SOUTHERN PACIFIC

L. C. IOAS, *Passenger Traffic Manager*, Chicago 4, Ill.

H. H. GRAY, *Passenger Traffic Manager*, Houston 1, Texas.

G. B. HANSON, *Passenger Traffic Manager*, Los Angeles 14, Cal.

C. E. PETERSON, *Vice-President*, System Passenger Traffic, San Francisco 5, Cal.