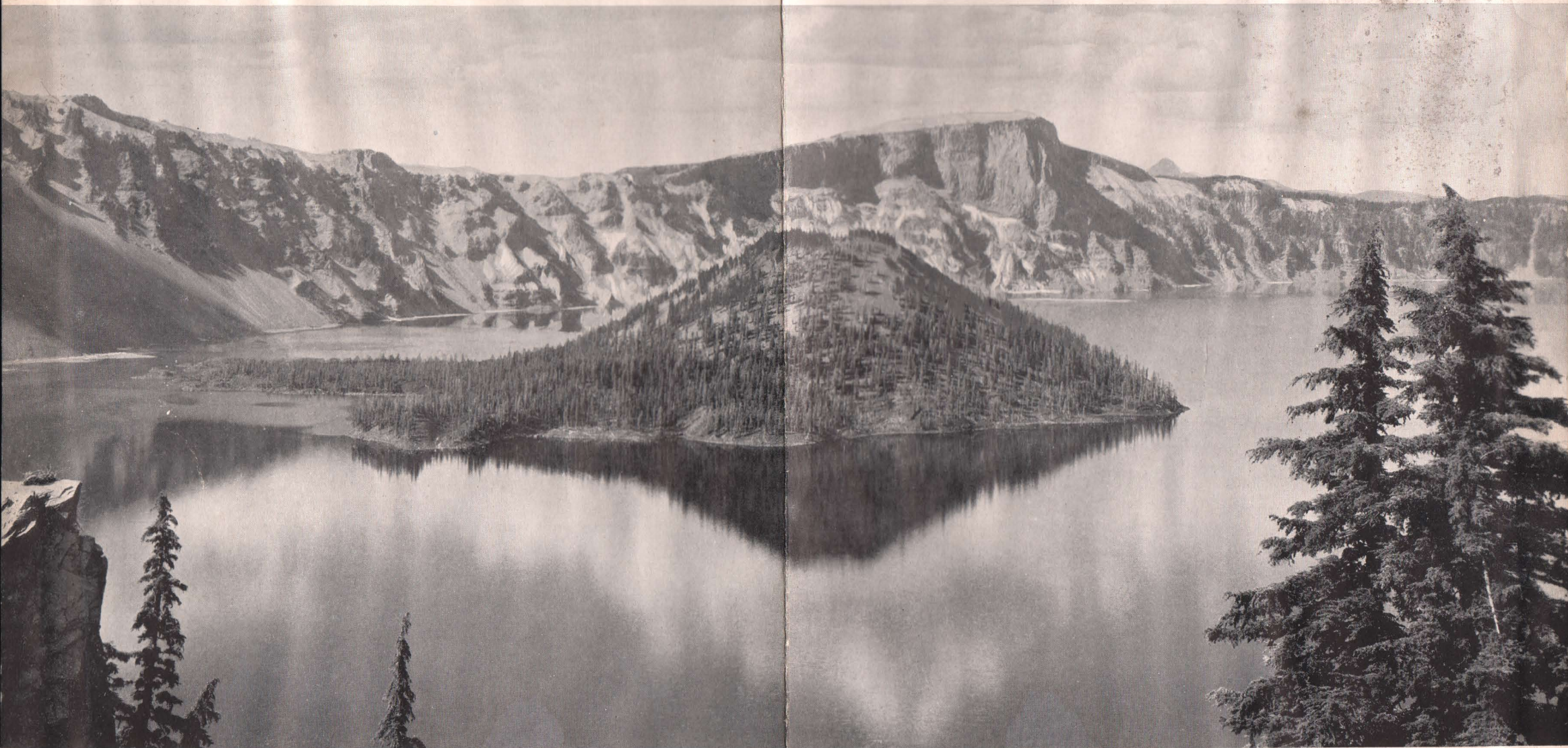


# MENU

SOUTHERN PACIFIC LINES



*In "the mountain that swallowed itself" is indigo blue Crater Lake reached by Shasta Route.*

POWERS AROUND AMERICA TOUR



## *Luncheon*

★ ★ ★

CHOICE OF:

FILLET OF HALIBUT, MEUNIERE

CREAMED CHICKEN, A LA KING, EN BORDURE

FRESH STRING BEANS

CREAM WHIPPED POTATOES

or

THE CASSEROLE

(Choice Cuts of Spring Lamb, Saute, with  
Fresh Vegetables and Browned Potatoes)

THE SALAD BOWL

FRESH YOUNGBERRY COBBLER

CORN BREAD

ASSORTED BREAD

TEA (Hot or Iced)

COFFEE

MILK