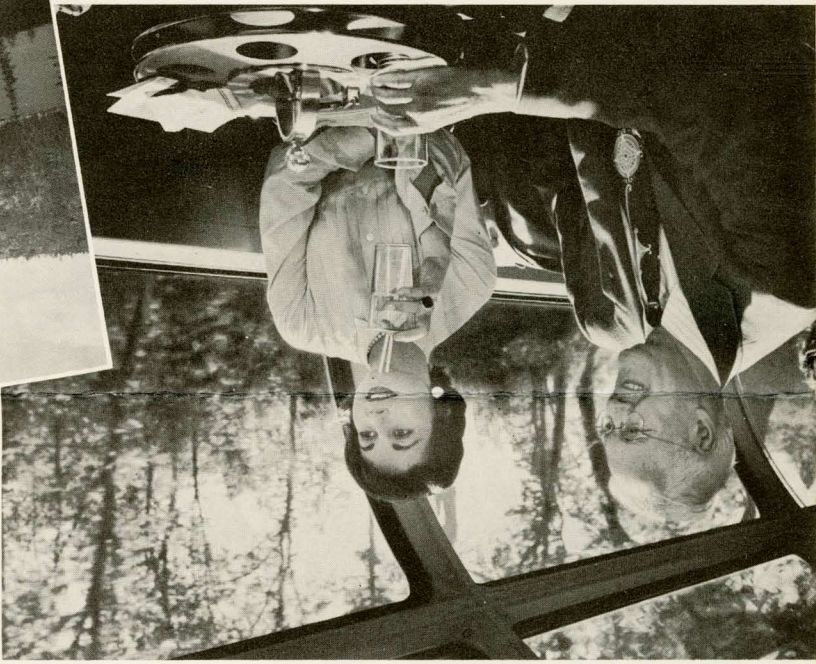


# SKY-WIDE AND HANDSOME!

Southern Pacific  
has the glassiest  
Dome Cars  
in the world.



Glass-domed the entire length of the car (not just part-way), S.P.'s new Dome Lounge Cars are the last word in dome-car service. ABOVE, the cocktail lounge, with steps leading to terrace deck. LEFT, passengers on terrace deck enjoy unrivalled views of Western scenery, partake of refreshments. BELOW, dome's-eye view of Donner Lake, scenic high-spot in High Sierra on S.P.'s historic Overland Route.

- W. F. COVNE, Passenger Traffic Manager, Chicago, Ill.
- JOEL NEWMAN, Passenger Traffic Manager, New York, N. Y.
- H. H. GRAY, Passenger Traffic Manager, Houston, Texas
- J. H. PRUETT, JR., Passenger Traffic Manager, Los Angeles, Calif.
- F. V. SCHAU, General Passenger Agent, New Orleans, La.
- B. S. QUAYLE, General Passenger Agent, Portland, Ore.
- C. O. OLSEN, General Passenger Agent, Oakland, Calif.
- T. L. CHES, General Passenger Agent, San Francisco, Calif.
- L. H. TRIMBLE, General Freight & Passenger Agent, Phoenix, Ariz.
- J. E. BLEDSOE, General Passenger Agent, El Paso, Texas
- C. E. PETERSON
- Vice-President, System Passenger Traffic
- San Francisco, Calif.

Southern  
Pacific

LITHO IN U. S. A.



6-8-55-30M



# SKY-WIDE AND HANDSOME!

S. P.'s unique Dome Lounge Cars  
now on the SAN FRANCISCO OVERLAND,  
the SAN JOAQUIN DAYLIGHT,  
and the SHASTA DAYLIGHT.

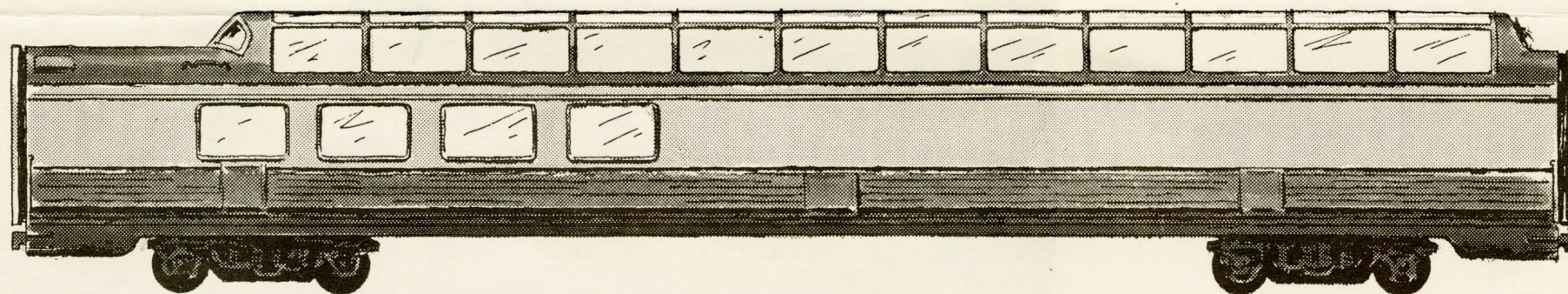
When you step inside our new Dome Lounge Car, all glass-covered—open to the heavens from stem to stern—we think you'll say it's the most sensational thing on wheels you ever saw. It's different from any other dome car ever built, because every seat in the car is "under glass." One third of each car is a cocktail lounge, and two thirds (up a short flight of steps) is a terrace deck with many more comfortable seats for enjoying refreshments and the sky-wide and handsome view. The stunning greens and browns of the decorative scheme almost bring the scenery right in through the glass!

Southern Pacific is *your* railroad, serving more of the West and Southwest than any other railroad. When we come up with something like our new Dome Lounge Cars, we hope it's an indication that we are trying to do a modern, progressive job of railroading, bringing you ever-better passenger and freight service.

**The Overland Dome Lounge Car** between San Francisco and Ogden gives view of High Sierra by day. City of St. Louis, which consolidates with Overland at Ogden, has a dome car, too.

**The San Joaquin Daylight** (San Francisco Bay Area-Los Angeles) now offers you a big, broad dome's-eye view of California's great Central Valley and the rugged Tehachapi Mountains.

**The Shasta Daylight** (San Francisco Bay Area-Portland) has a Dome Lounge Car from which you'll see mighty Mt. Shasta, also rivers, lakes, forests, waterfalls of the scenic Shasta Route.



**Southern  
Pacific**