

# COAST TO COAST THROUGH THE OLD SOUTH

*on the Nation's Finest  
Luxury Streamliners*

THE  
*Crescent*  
Washington, D. C. — New Orleans

SUNSET  
LIMITED  
New Orleans — Los Angeles



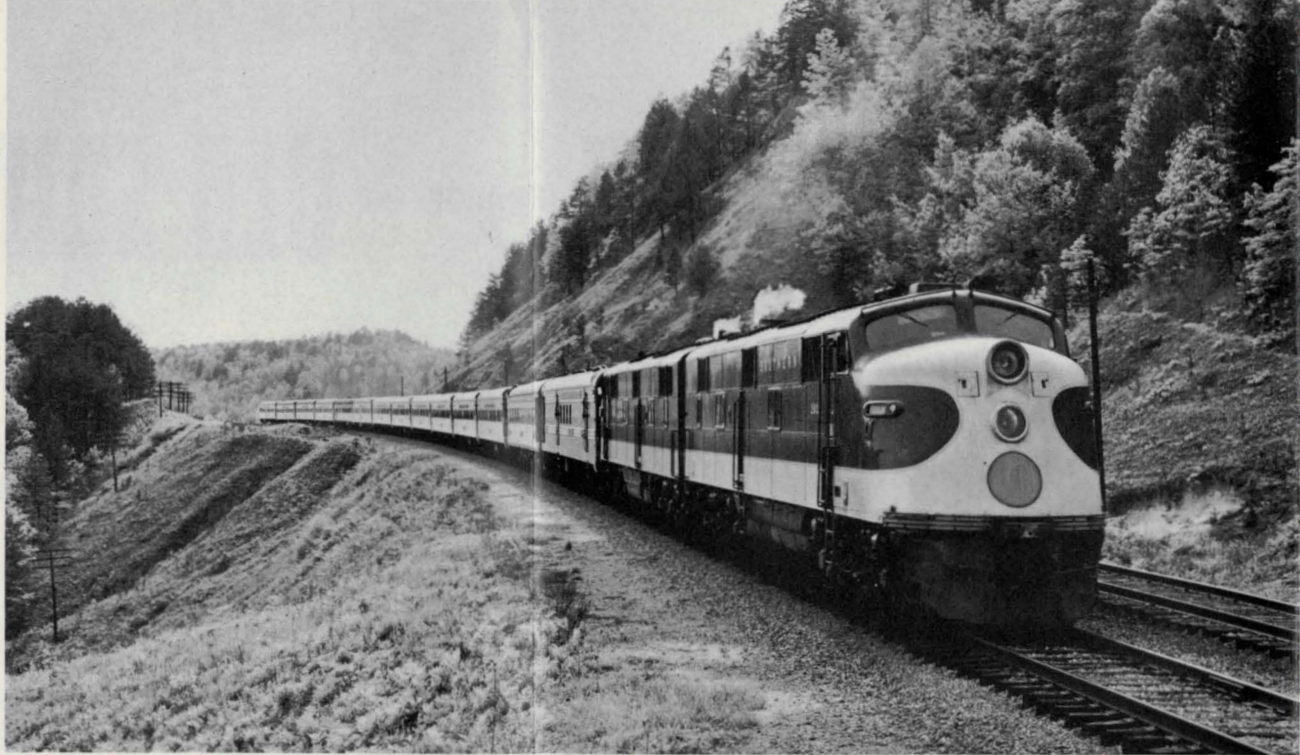
**H**ere is a transcontinental trip between New York and Los Angeles that is *really* different—one that takes you through such historic and romantic places as Washington, D. C., Charlotte, Atlanta, Montgomery, Mobile, Mississippi Gulf Coast resorts, New Orleans, Houston, San Antonio, El Paso, Tucson, Phoenix and Palm Springs. Yet you pay no more rail fare on this scenic Washington-Sunset Route than you would on any other route.

Two of the nation's newest and finest streamliners join forces to provide swift, luxurious service: "*The Crescent*"—A Grand New Train with a Grand Old Name—between New York and New Orleans, and the "*Sunset Limited*"—The Streamlined Train with the Southern Accent—between New Orleans and Los Angeles.

Ideally, your Washington-Sunset Route trip should be made in a leisurely fashion, with stopovers at the places that interest you most. But even if you must go straight through, on a hurry-up business trip, plan to try this swift, scenic, *really different* combination next time. You'll find it restful, relaxing and pleasant every mile of the way.

This little booklet will show you why.





**T**HE CRESCENT—A Grand New Train With A Grand Old Name.

**F**ine food awaits you in "The Crescent's" diner.







**THIS IS THE**

*Crescent*

**H**ere is one of America's finest, most modern streamliners. It is completely new—from its sleek, powerful Diesel locomotive to its swank, elevated "Lookout Lounge." And you'll like everything about it—from its gleaming, stainless steel exterior to its delicious "Southern Cooking" meals.

Between New York and New Orleans, "*The Crescent*" glides swiftly through 12 states and the District of Columbia—through an area that is rich in history and tradition, and one that is unsurpassed for scenic beauty.

The pictures on these pages give you a brief glimpse of a few of the luxurious accommodations you will enjoy aboard "*The Crescent*." But pictures alone can't tell the whole story. You'll be delighted with the privacy that is yours when you want it, in "*The Crescent's*" all-room Pullmans. Choose from five kinds of private rooms: roomette, bedroom, bedrooms-en-suite, drawingroom and master room (with private shower and radio). Whichever you choose, you'll sleep in the same full-size Pullman bed with its comfortable mat-

tress and fresh linen each night. You'll have complete lavatory and wardrobe facilities in your own room. Lighting and air-conditioning in your room is controlled by the flick of a switch. Full-length mirrors and circulating ice water are additional features.

You'll like the club-like atmosphere of the lounge and observation cars, and as an added inducement to stroll through this smooth-riding train, all car doors are pneumatically operated and open at a finger's touch. There is telephone service available between your sleeping car and the diner.

Between Atlanta and New Orleans, "*The Crescent*" also provides the very latest in reclining-seat coach accommodations, at very low fares. This economical service carries you comfortably in foam-rubber "Dreamliner" seats, with generous leg room and individual foot rests and reading lights. Restroom facilities for both men and women are spacious.





**M**id-Train Lounge is a delightful spot to relax.



**D**ouble Bedroom gives family privacy by day.

**S**wank Observation Lounge shows off the view.



**A** Roomette is perfect for traveling alone.



**B**edroom Suite on "The Crescent" accommodates four.



# THE *Crescent*

A GRAND NEW TRAIN  
WITH A GRAND  
OLD NAME





## NOW MEET THE SUNSET LIMITED

**T**his is the pride of Southern Pacific's great fleet of streamliners—The Streamlined Train with the Southern Accent. Not only has it made railroad history with its all-time record 42-hour schedule between New Orleans and Los Angeles, but its "Sunset Pink" French Quarter Lounge has made fashion history, too, inspiring a high-style trend that swept the country from New York to Los Angeles along this same Washington-Sunset Route.

No expense was spared in making this extra-fare streamliner an outstanding train. Since it serves Louisiana, Texas, New Mexico, Arizona and California, much of its decor has been drawn from colorful territory of the Southwest and West.

Here, too, you will find all the privacy—or all

the companionship—you wish. The "Sunset's" all-room Pullman accommodations give you a choice of roomettes (so perfect for traveling alone), bedrooms (with your own separate, private wash-room), or spacious bedrooms-en-suite (accommodating up to four people in luxurious comfort). Circulating ice water, automatically lighted clothes closets, individually controlled air-conditioning and no-glare fluorescent lighting are just a few of the special features that add to your comfort while you're "at home" in your own room.

The beautiful French Quarter Lounge, with its "Sunset Pink" walls and wrought iron grille work adds a touch of New Orleans' famous Vieux Carre in a modern setting. Reserved for Pullman





**T**here's a touch of New Orleans in the French Quarter Lounge.

passengers exclusively, the French Quarter Lounge is a delightful place for refreshment, reading, games or conversation. Current magazines and newspapers are always within reach.

For luxury with economy, the "*Sunset Limited*" also offers the finest in streamlined, reclining Chair Car accommodations. Soft-as-a-cloud "Sleepy Hollow" seats have individually controlled lighting. Giant picture windows are designed so that they never fog or steam. New type "zone controlled" air-conditioning eliminates drafts and overheating. Spacious rest-rooms.

The spectacular Pride of Texas Coffee Shop serves delicious meals at popular prices, and is open to all passengers as a lounge and for refreshments between meals. Its leather walls with their authentic pioneer brands, and the longhorn decorations add a real Texas flavor to the train. In addition, Southern Pacific's famous cuisine is also available in the magnificent Audubon Dining Room where the colorful birdlife decorations are replicas of the work of John James Audubon, Louisiana's famous artist-naturalist.

"Feather-touch" doors, smooth Diesel power and the effortless ease of "disc brake" stops make a promenade through the "*Sunset Limited*" a delightful way to stretch your legs.

**"S**unset" Bedroom features private lavatory.



**"S**leepy Hollow" Chair Car seats give luxury with economy.



**"S**unset" Roomette costs little more than lower berth.







**P**ride of Texas Coffee Shop-Lounge is open to all passengers.

**A**udubon Dining Room features famous Southern Pacific cuisine.





# There's so much to see



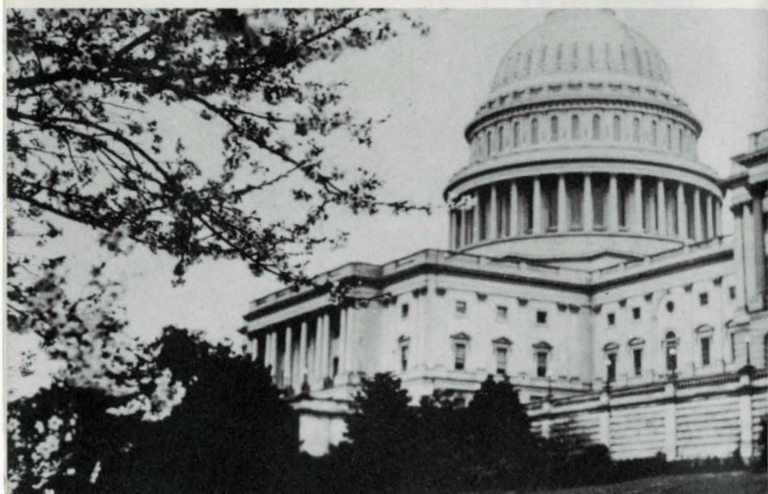
**F**or sheer interest and things to see, we'll match the Washington-Sunset Route against any other that you can name. Imagine seeing New York City, Washington, D. C., Atlanta (with its mellow memories of lavender and old lace—setting for Margaret Mitchell's famous "Gone With The Wind") plus New Orleans, Creole city of quaint, storied streets and fine restaurants, of flowers and festivals, of shopping and sightseeing.

After New Orleans, you speed west by south across silent miles of bayou-land and past venerable oak and fragrant magnolia in the Old South to Houston, fabulous city in a fabulous state, then on to San Antonio and across Texas to El Paso. This is another great stopover point for visits to

nearby Carlsbad Caverns National Park, and for the five-minute walk (or quick taxi) across the Rio Grande into Old Mexico and Juarez (considered by experienced travelers to be the most rewarding of all Mexican Border cities). Then this "Route of Romance" takes you through the exciting resort and guest ranch country of Southern Arizona, to Tucson, Phoenix, and California's Palm Springs before whisking you into Los Angeles' Union Station.

On these pages are photographs of just a few highlights of your Washington-Sunset Route trip. For more details, call or write any of the representatives of the four great railroads listed on the last page of this booklet.

**T**he Nation's Capitol in Washington, D. C.



**A**tlanta, scene of Margaret Mitchell's "Gone With The Wind."







**W**ar Memorial, Mobile, Alabama.



**W**rought iron grillework characterizes the Vieux Carre.



**S**an Jacinto Monument near Houston, Texas.

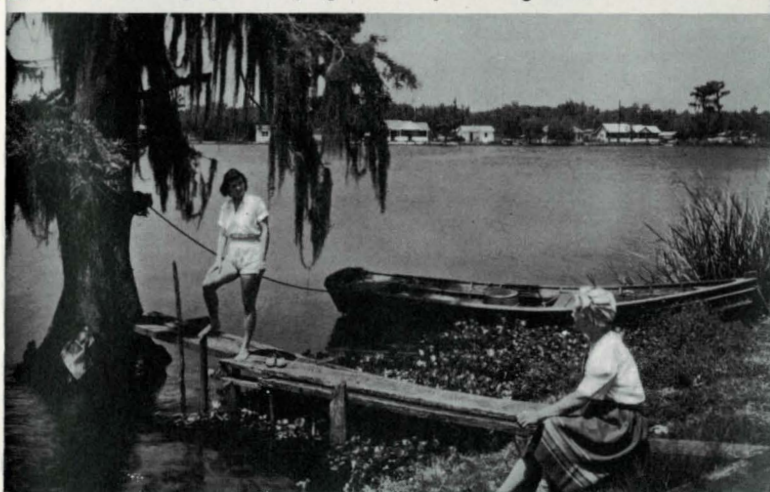


**M**ardi Gras—parades, parties and pageants.

**A** touch of the old and quaint in New Orleans.



**S**panish moss hangs gracefully against a Bayou background.





see it all—and save money too!



**T**he Alamo—permanently enshrined in every Texan's heart.



**I**n Arizona, everybody rides.

**P**acific surf laps Santa Monica near Los Angeles.



If you're traveling on a budget, you can still travel this scenic Washington-Sunset Route and enjoy luxury with economy. The streamlined "*Crescent*" provides comfortable, low-cost coach accommodations between Atlanta and New Orleans. Convenient connection with the swift "*Sunset Limited*" where "Sleepy Hollow" Chair Car seats are like your own private cloud. Coffee Shop-Lounge service for Chair Car passengers provides excellent meals at popular prices, and recreational facilities and refreshment between meals. You have the same stopover privileges with your inexpensive Chair Car ticket that you would have with Pullman accommodations.

### ANOTHER COMBINATION

Another pair of trains of conventional equipment team up to provide you with a flexible schedule or perhaps a more convenient departure time for you. The "*Piedmont Limited*" between New York-Washington and New Orleans joins S. P.'s "*Argonaut*" for the trip between New Orleans and Los Angeles. Choice of both Pullman and Chair Car accommodations.





get full details from any  
of these representatives

**Boston, Mass.**.....80 Boylston St.....S. I. Barnes, *New Eng. Pass. Agt.*,  
Southern Railway  
294 Washington St.....T. J. Lucey, *General Agent*  
Southern Pacific

**New York, N. Y.**.....500 Fifth Ave.....T. F. Davidson, *Gen. Pass. Agt.*,  
Southern Railway  
500 Fifth Ave.....J. E. Cornell, *Gen. Eastern Pass. Agt.*,  
Louisville & Nashville RR.  
630 Fifth Ave.....J. H. Desherow, *Pass. Traffic Mgr.*,  
Southern Pacific

**Philadelphia, Pa.**.....1408-11 Western Savings Fund Building.....  
.....W. M. McCullough, *Asst. Gen. Pass. Agt.*,  
Southern Railway  
111 So. 15th St.....G. E. Maccubbin, *General Agent*  
Southern Pacific

**Baltimore, Md.**.....1750 Mathieson Bldg.....E. B. Howes, *Dist. Pass. Agt.*  
Southern Railway

**Washington, D. C.**.....McPherson Square.....W. S. Hyman,  
*Asst. Gen. Pass. Agt.*, Southern Railway  
1501 H St.....P. R. Conaghan, *Gen. Agent*  
Southern Pacific

**Richmond, Va.**.....801-A East Main St.....C. L. Toney, *Div. Pass. Agt.*,  
Southern Railway

**Atlanta, Ga.**.....57 Luckie St., N.W.....G. M. Lawrence,  
*Asst. Pass. Traffic Mgr.*, Southern Railway  
4 Hunter St., S.E.....W. W. Snow, *Gen. Pass. Agt.*,  
Atlanta & West Point RR.  
101 Marietta St.....Clark Dunn, *Div. Pass. Agt.*,  
Louisville & Nashville RR.  
314 Volunteer Bldg.....T. G. Burgess, *Gen. Agent*  
Southern Pacific

**New Orleans, La.**.....1413 Whitney Bank Bldg.....R. A. Stanley,  
*Gen. Pass. Agt.*, Louisville & Nashville RR.  
229 St. Charles St.....A. E. Jackson, *Dist. Pass. Agt.*,  
Louisville & Nashville RR.  
610 Poydras St.....A. C. Ziegler, *Gen. Pass. Agt.*,  
Southern Pacific

**Houston, Tex.**.....913 Franklin Ave.....H. H. Gray, *Pass. Traffic Mgr.*,  
Southern Pacific

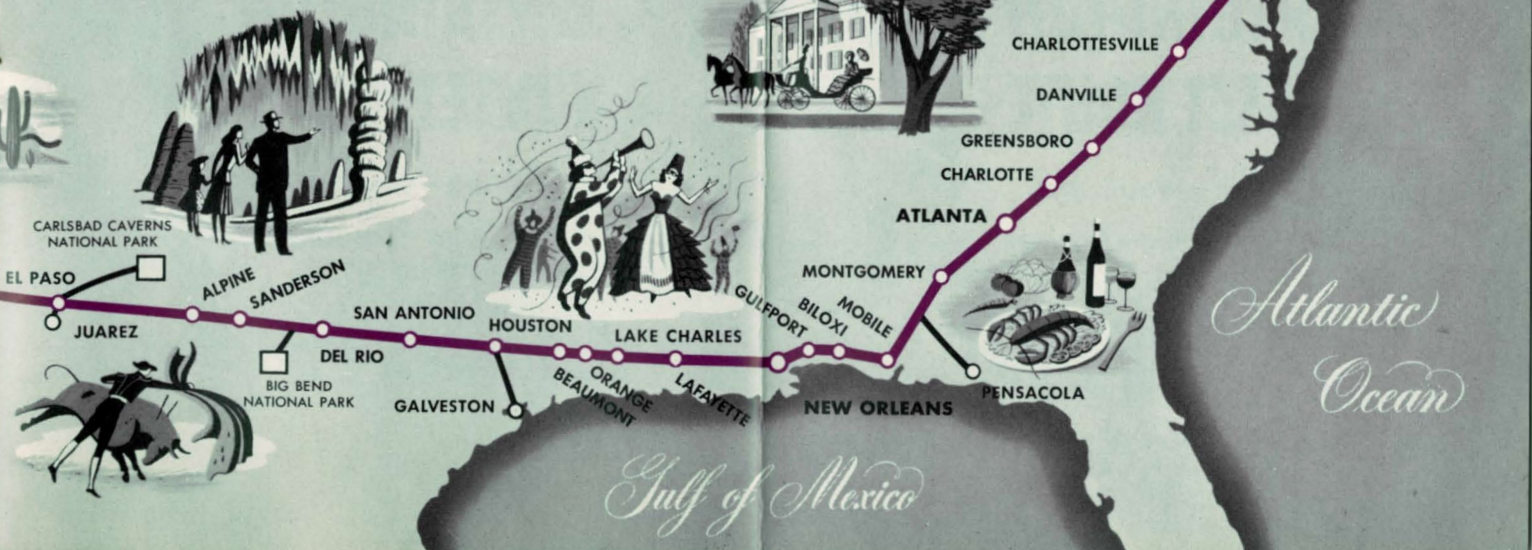
**El Paso, Texas**.....416 North Stanton St.....J. E. Bledsoe, *Gen. Pass. Agt.*,  
Southern Pacific

**Phoenix, Ariz.**.....728 Security Bldg.....L. H. Trimble,  
*Gen. Frt. & Pass. Agt.*, Southern Pacific

**Los Angeles, Cal.**.....Pacific Elec. Bldg.....G. B. Hanson, *Pass. Traffic Mgr.*,  
Southern Pacific

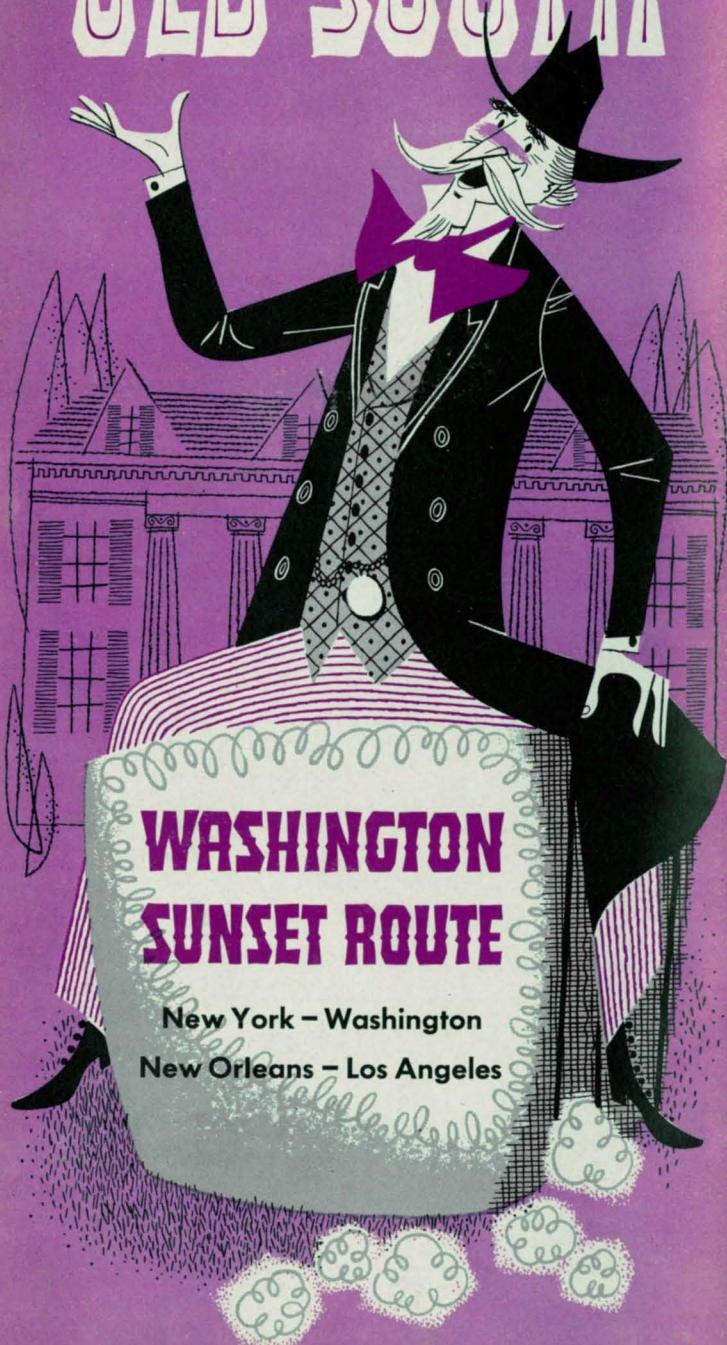
**San Francisco, Cal.**.....65 Market St.....C. E. Peterson, *Vice Pres.*,  
Southern Pacific

The nearest representative of the Southern Railway, Atlanta and West Point Railroad, Louisville and Nashville Railroad, or Southern Pacific will gladly give you full information as to passenger fares, Pullman and Chair Car reservations, time schedules, etc. He will also attend to such details as tickets, hotel reservations, etc., for you or help you in your freight shipments. Representatives of above railroads in important cities are shown to the left.





# COAST TO COAST THROUGH THE OLD SOUTH



# COAST TO COAST THROUGH THE OLD SOUTH

