

VIEWS OF THE
OVERLAND ROUTE



16 FULL COLOR KODACHROME VIEWS

*This folio contains sixteen full color kodachrome views
of interesting scenes along the*

**SOUTHERN PACIFIC
OVERLAND ROUTE**

**THESE ATTRACTIVE SCENES ARE SUITABLE
FOR FRAMING**



THE GOLDEN GATE BRIDGE, SAN FRANCISCO. WORLD'S LONGEST SINGLE SPAN—4,200 FEET



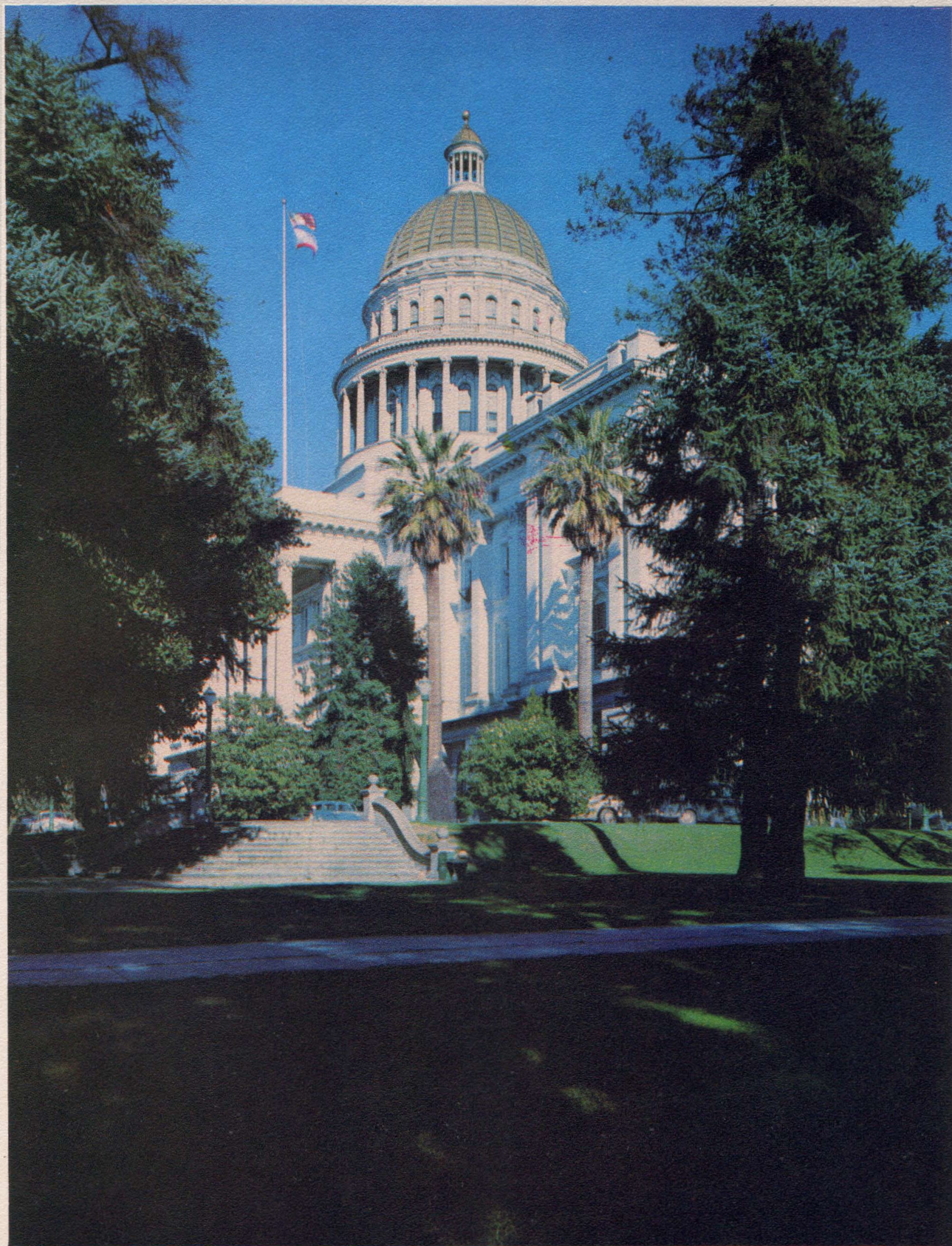
FISHERMAN'S WHARF, SAN FRANCISCO



OLD ST. MARY'S CHURCH IN SAN FRANCISCO'S CHINATOWN



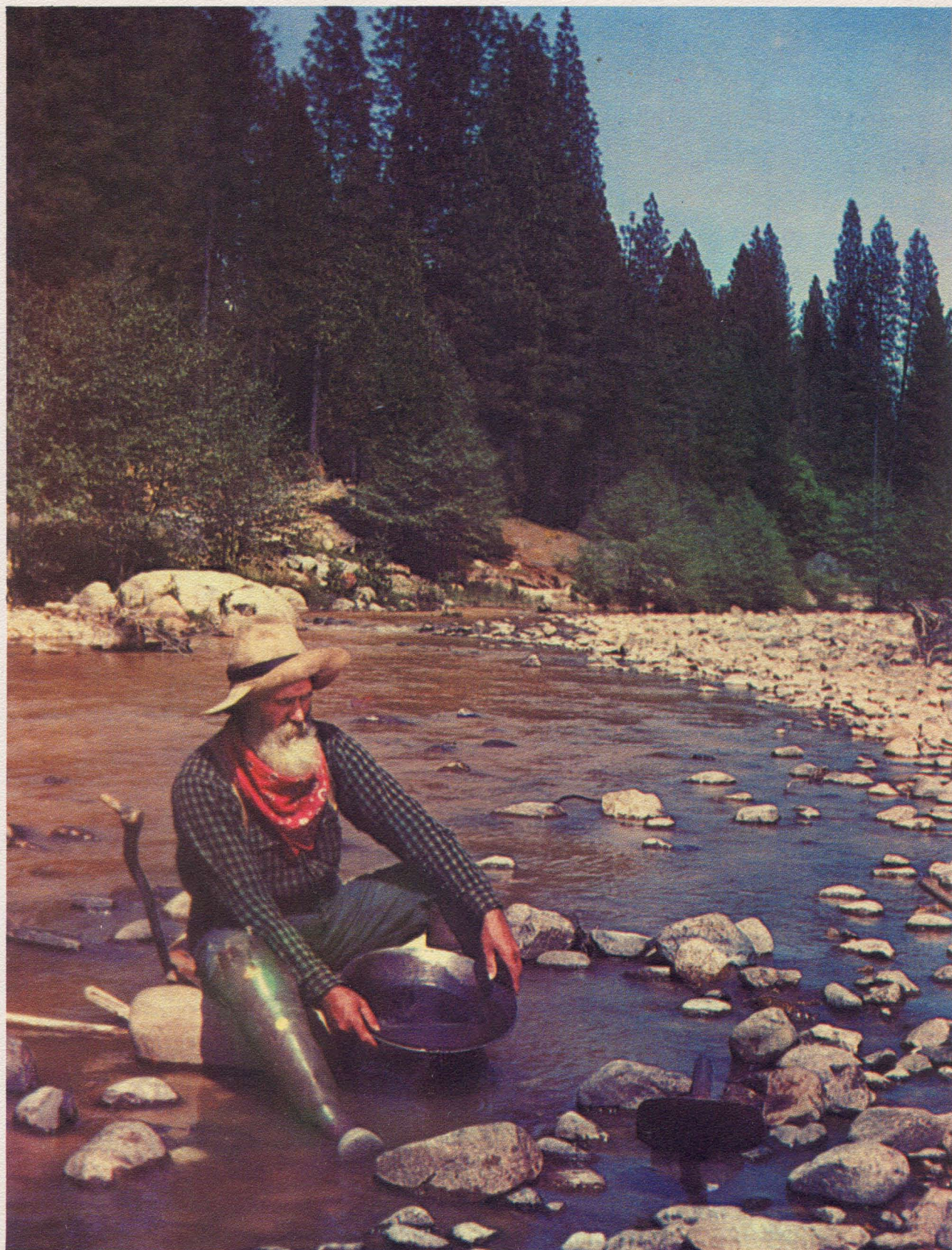
THE SAN FRANCISCO-OAKLAND BAY BRIDGE FROM YERBA BUENA ISLAND—SAN FRANCISCO'S SKYLINE IN DISTANCE



THE CAPITOL OF THE STATE OF CALIFORNIA, SACRAMENTO



PLACER WORKINGS IN CALIFORNIA'S SIERRA GOLD COUNTRY



OLD PROSPECTOR PANNING GOLD IN DEER CREEK NEAR NEVADA CITY, CALIFORNIA



EMIGRANT GAP, MOST FAMOUS OF MANY SIERRA PASSES USED BY EARLY IMMIGRANTS IN THEIR TREK TO CALIFORNIA



MILE-HIGH LAKE TAHOE SURROUNDED BY SNOW-COVERED PEAKS OF CALIFORNIA'S HIGH SIERRA



THE TRUCKEE RIVER CANYON ON THE EASTERN SLOPE OF THE SIERRA



RENO, NEVADA AT NIGHT



VIRGINIA CITY, NEVADA, CENTER OF THE FAMED COMSTOCK LODGE



PALISADES CANYON, NEVADA



THE GREAT SALT LAKE AT SUNSET



GOING TO SEA BY RAIL—THE "CITY OF SAN FRANCISCO" ON THE 32-MILE LUCIN CAUSEWAY ACROSS GREAT SALT LAKE



THE MORMON TEMPLE (FOREGROUND) AND THE CAPITOL OF THE STATE OF UTAH (LEFT REAR), SALT LAKE CITY

