



When you come aboard

When you come aboard the new *Cascade* you will step into a world of quiet luxury on wheels.

We're confident you'll enjoy this sleek, gray, diesel-powered, *completely new* Streamliner on its new, swifter *overnight* schedule that places you in San Francisco-Oakland, or Portland, refreshed for your day's work or pleasure...

Has through Pullmans to and from Seattle, of course... and excellent connections at either end...

You'll find privacy and comfort the watchword aboard... You can relax alone in your room or meet congenial fellow travelers in the famed "Cascade

Club"... On foam-rubber mattress you sleep undisturbed, diesel power soothing your dreams...

On these pages we show you the world's newest luxury sleeping accommodations, *Cascade* bedrooms, bedrooms-en-suite, roomettes, compartments, and drawing rooms...

We think you will agree with us that our new *Cascade* deserves, with her sister Streamliner the *Lark* (San Francisco-Los Angeles) the title of "America's Finest Overnight Train." On our Shasta Route it's the *Cascade* by night, the *Shasta Daylight* by day...

Turn the pages and you will see...



Privacy is the first consideration in a Cascade Bedroom.

The BC TYPE Bedroom by night, showing both beds.



BL TYPE Bedroom. Note simple heat control, soft lights, separate enclosed wash-room.

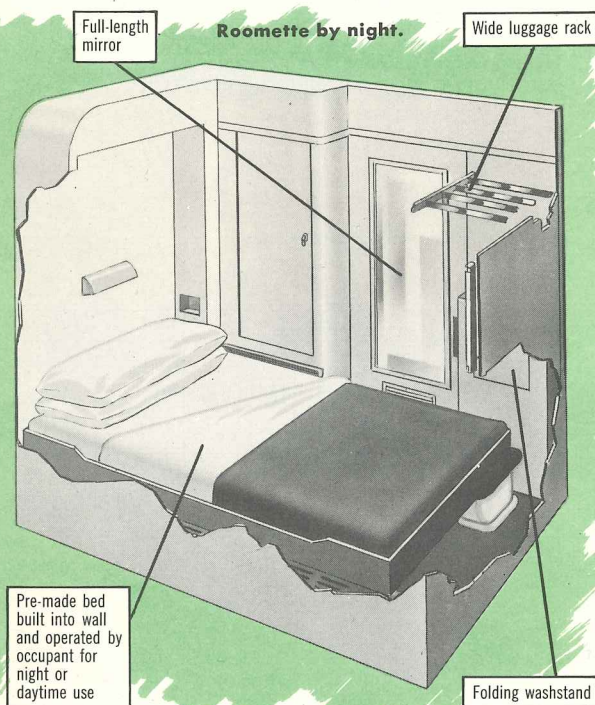
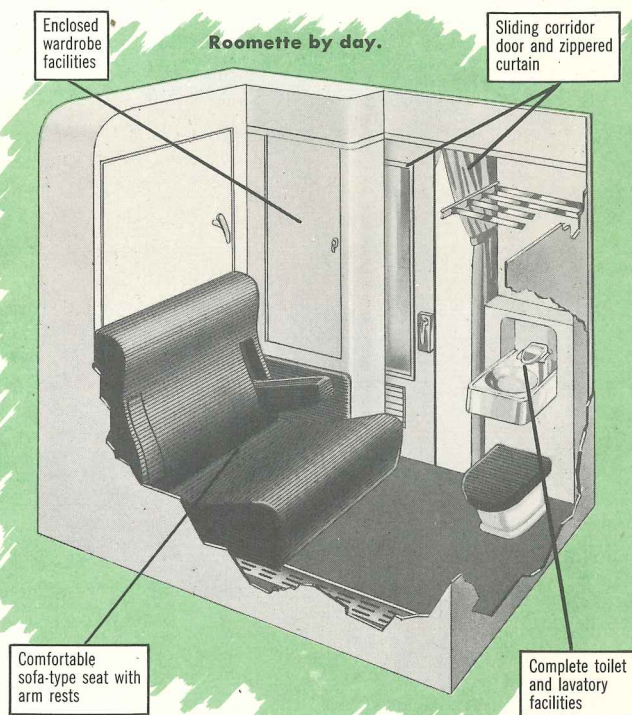


Roomette

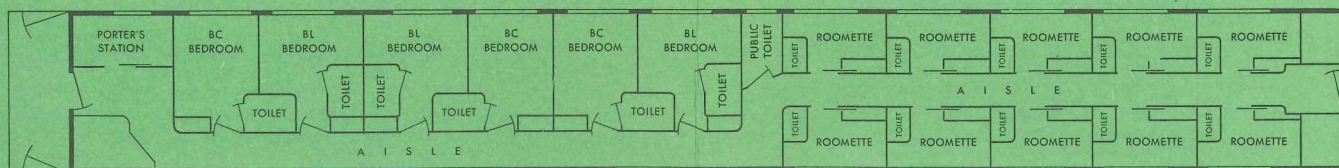
From the moment you step into your single-occupancy *Cascade* Roomette and hang your coat in its closed locker, you will delight in the privacy and luxury you have achieved at so little cost!

The color scheme will be Cascade Blue or Apricot. The bed is hidden in the wall, pre-made, and you yourself easily swing it down or up at your pleasure. Softly upholstered "contour" seat with armrests... fluorescent lights, close at hand for reading... your

own toilet and folding washstand... icewater at your fingertip... large luggage rack... electric razor outlet... full length mirror in your sliding door—and by the way, you may close and lock your door at night or simply zipper yourself in behind the door curtain. Remember to put your shoes in the little locker and next morning they will gleam at you brightly shined. All in all, nothing in the world makes a king or queen of you faster than a luxurious *Cascade* Roomette...

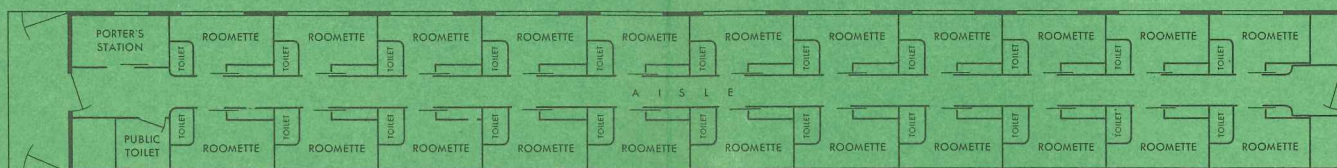


▼ A *Cascade* roomette-and-bedroom car is shown in this floor plan.





**Roomette. Closed
locker space for
your clothing.**



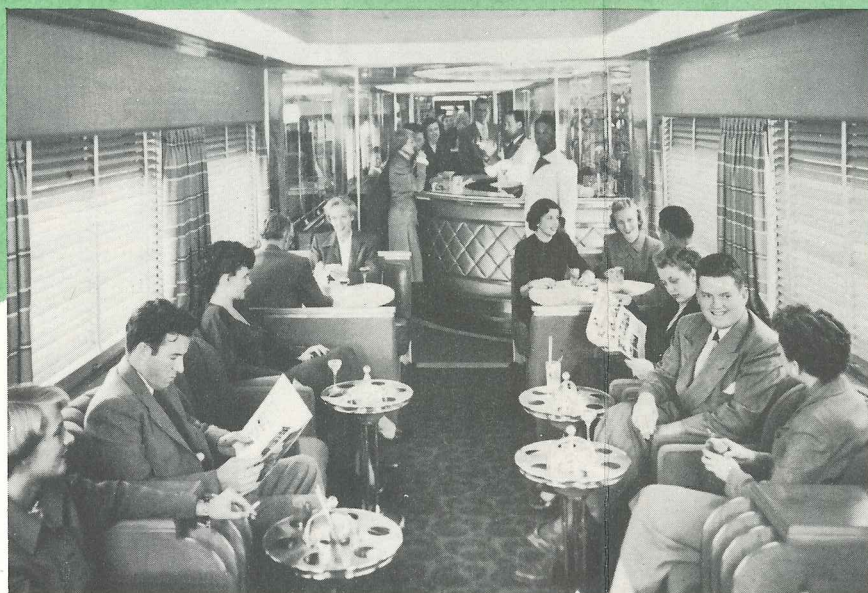
▲ **This is the floor plan
of a Cascade
all-roomette car.**



**Roomette.
Lazy reading lights
are close by.**

Kitchen occupies
this next car.

The Diner,
a full car length.



"Case



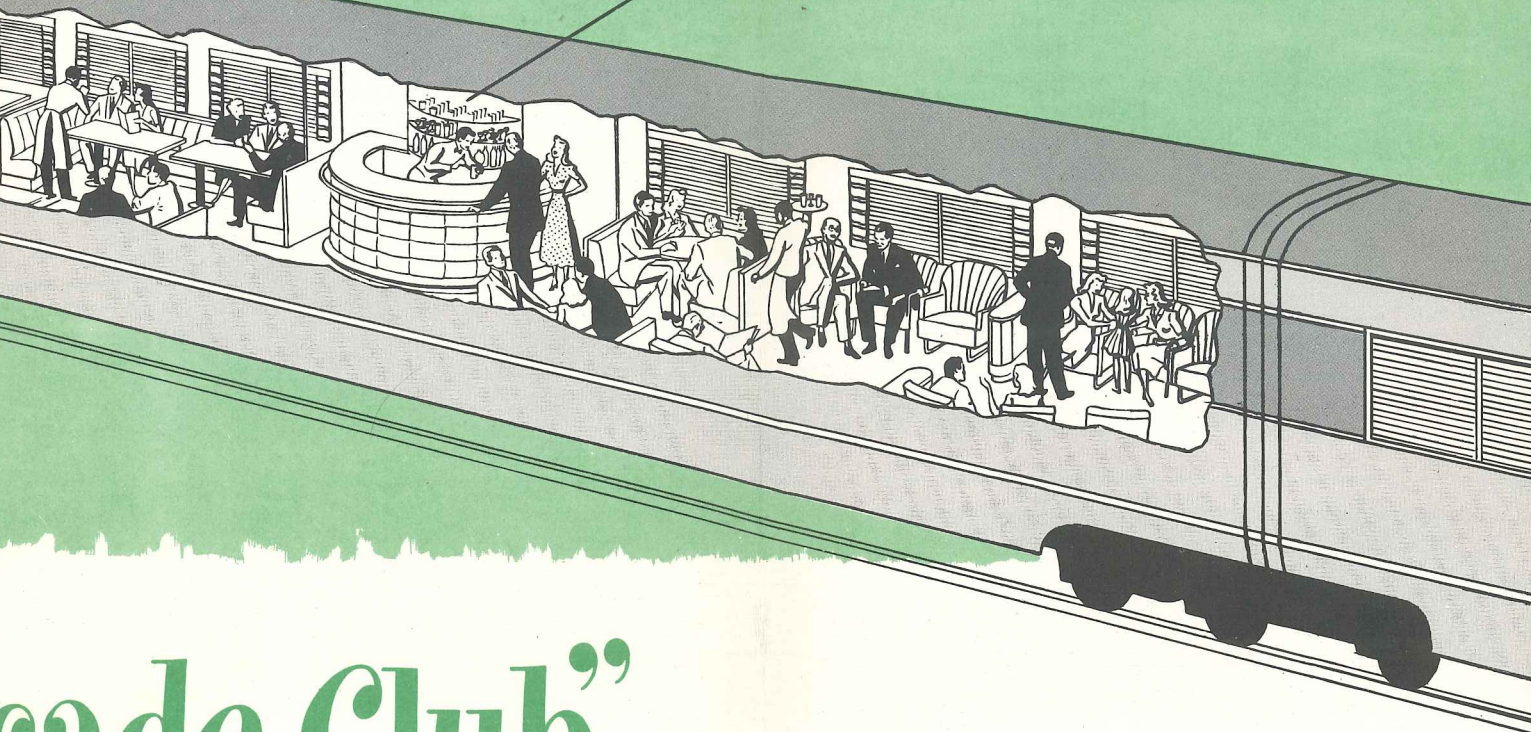
A spirit of hospitality and good
living, the companionship of
congenial travelers.



The Diner section of the "Cas-
cade Club" holds high our South-
ern Pacific tradition of friendly
service, fine cuisine.

"Hidden" articulation
of two cars here.

Lounge and Bar,
a full car length.



Cascade Club" DINER & LOUNGE

Nowhere else in the world, except on the *Cascade's* sister train the *Lark*, will you find just such a wonderful expanse of pleasure-on-wheels as this.

The "Cascade Club" is two full cars in length, yet cleverly concealed articulation between the cars makes it appear to be one very long expanse for lounging and dining—130 feet long, in fact.

Colors here are inspired by the beautiful Northwest. You will note the deep Cascade Blue carpet, the horizontally striped drapes of silver-blue, cedar and tan, the cedar-tan tones of the upholstery.

There is an interesting little "lobby" whose semi-

circular seats and cedar-red star design in the floor mark the articulation of the two cars. The cutaway drawing, above, shows how it is done.

The lounge section features cool tones of Odell Blue, Cedar, and Cascade Blue, a carpet in plume pattern of deep Cascade Blue. You will find the friendly bar done in tones of gold, silver, and blue.

We believe, too, that you'll find in the "Cascade Club" a spirit of Southern Pacific hospitality and good living, amid people one may be proud to know.

"I'll see you this evening in the Cascade Club," is your invitation to pleasant companionship.

••• Drawing Room

The ultimate in modern streamlined luxury train equipment, a 3-bed *Cascade* Drawing Room offers you two beds that disappear in the walls and another that becomes a pleasant roomy sofa by day.

Also, there are two folding, movable chairs for your leisure by day. By night they disappear.

Complete privacy is yours in separate, enclosed toilet-washroom annex. The spacious closet, easy temperature-air-conditioning control, and all other features are the ultimate in American car design.



Just ring for a table when you're ready for that conference.

••• Compartment

Even roomier than a Bedroom, the *Cascade* 2-bed Compartment has one bed that *disappears* in the ceiling by day. The other is a luxurious, contoured sofa couch with folding arm rests. Or if you would like a nap, just swing the bed section down and stretch out. It's pre-made for sleep.

There's a folding armchair for your daytime relaxation. It disappears at night.

And of course, you have a separate enclosed toilet-washroom annex, spacious closet, luggage rack and all the other luxuries in your *Cascade* compartment.

Luxury Features of the *Cascade*

► **ENCLOSED TOILET FACILITIES** in bedrooms, compartments, and drawing rooms make *privacy* the watchword of this great modern streamliner.

► **FEATHER-TOUCH DOORS** that respond instantly to a whim of your fingertip make strolling through the *Cascade* a pleasure.

► **EASY-CONTROL TEMPERATURE** and air-conditioning in *every* room, easily set, let you choose your own climate on the *Cascade*.

► **FLUORESCENT LIGHTS**, always close at hand (separate for each bed by night) give you perfect, soft visibility.

► **FULL-VIEW WINDOWS** on the *Cascade*, everywhere. They don't fog up, and the curtain raises *easily* out of the way.

► **FOLDING SEAT ARMS**, handy to your elbow any time it wants to rest, are a feature in *Cascade* rooms.

► **RUNNING ICE WATER**, in every car and every room, refreshes you the instant you want it.

► **SHOE LOCKERS** in each *Cascade* room enable the porter to take your shoes in the night, return them shined before morning.

► **WARDROBES** are spacious on the *Cascade*. The trip is kind to your clothes.

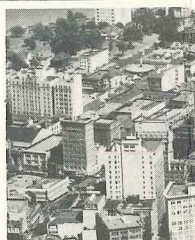
► **LUGGAGE RACKS** are wide. They free you of the baggage problem so you can stretch out your legs luxuriously.

► **ELECTRIC RAZOR OUTLETS** await your command in every room on the *Cascade*, gentlemen.

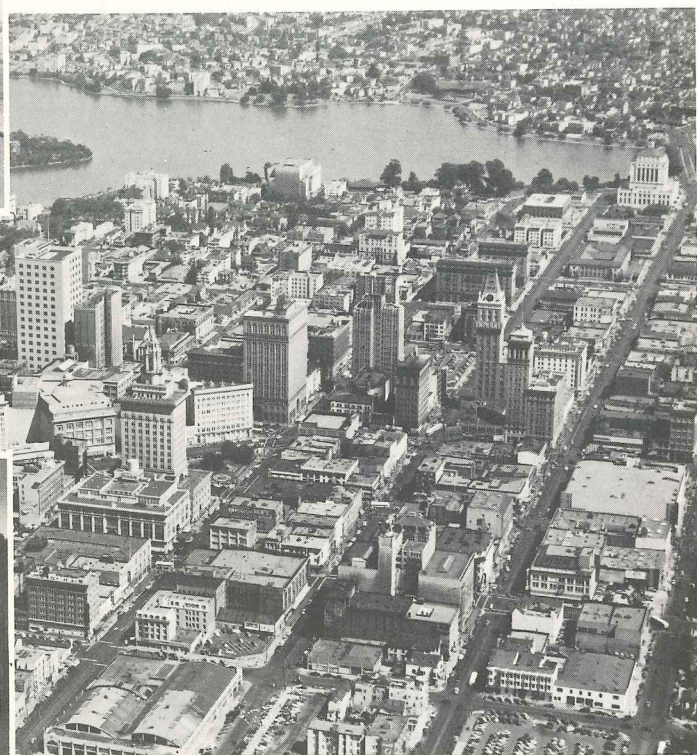
Scenes along the way



▲ Bay Bridge and San Francisco skyline, seen from incoming S.P. Ferryboat.



Seattle, Portland, Oakland, and San Francisco all rival one another for uniqueness of setting, beauty of outlook. Each is a great port, each lures shipping from Asia and all the seas. And, linking these cities, our Shasta Route takes the traveler through mountain, lake, and forest scenery that few routes in the world can equal.



▲ Fast-growing Oakland has beautiful Lake Merritt in its center.



◀ Southern Pacific's Shasta Route includes some of the world's finest scenery.



▲ Portland, on Willamette River, with Mt. Hood in the background.



▲ Elliott Bay, Puget Sound, brings sport and scenery to Seattle's very doorstep.

To Plan Your Trip

For aid in planning your *Cascade* or other S.P. journey, ask any Southern Pacific Representative or Ticket Office, or write to any of the following:

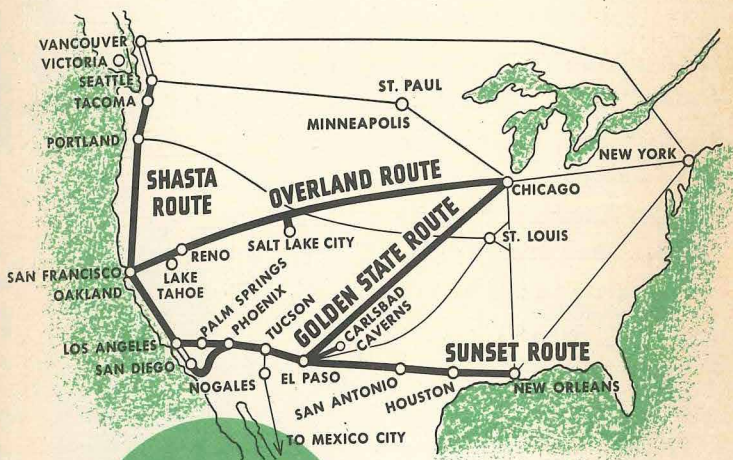
VANCOUVER, B. C.	619 Howe St.....	K. B. Currie, <i>Canadian Gen. Agt.</i>
SEATTLE 1, WASH.	218 Vance Bldg.....	C. G. Alton, <i>Gen. Agt.</i>
SPOKANE 8, WASH.	1129 Old Natl. Bank Bldg.....	G. W. Morgan, <i>Gen. Agt.</i>
PORTLAND 4, ORE.	Pacific Bldg.....	J. H. Pruett, Jr., <i>Gen. Pass. Agt.</i>
OAKLAND 12, CALIF.	600 Tribune Tower.....	F. E. Watson, <i>Gen. Pass. Agt.</i>
SAN FRANCISCO 5, CALIF.	65 Market St.....	T. Louis Chess, <i>Gen. Pass. Agt.</i>
LOS ANGELES 14, CALIF.	Pacific Electric Bldg.....	G. B. Hanson, <i>Pass. Traffic Mgr.</i>
PHOENIX, ARIZONA	728 Security Bldg.....	L. H. Trimble, <i>Gen. Frt. & Pass. Agt.</i>
EL PASO, TEXAS	Southern Pacific Bldg.....	J. E. Bledsoe, <i>Gen. Pass. Agt.</i>
HOUSTON 1, TEXAS	Southern Pacific Bldg.....	H. H. Gray, <i>Pass. Traffic Mgr.</i>
NEW YORK 20, N. Y.	Rm. 212, 630 Fifth Ave.....	J. H. Desherow, <i>Pass. Traffic Mgr.</i>
CHICAGO 4, ILL.	310 S. Michigan Ave.....	L. C. Ioas, <i>Pass. Traffic Mgr.</i>

CLAUDE E. PETERSON

Vice President, System Passenger Traffic
65 Market Street, San Francisco 5, California

Great Streamliners on all S.P. Routes

- ▶ The new *Cascade* by night and new scenic *Shasta Daylight* by day on our Shasta Route (Portland-Oakland-San Francisco). No extra fare.
- ▶ The *Lark* and *Starlight* by night, the *Coast Daylight* by day on our scenic Coast Route (San Francisco-Los Angeles) and *San Joaquin Daylight* on our Valley Route (San Francisco-Oakland-Fresno-Los Angeles). No extra fare.
- ▶ The *City of San Francisco*, extra-fare, and the scenic, no-extra-fare *San Francisco Overland* on our Overland Route (Chicago-Oakland-San Francisco via Omaha, Ogden, Reno.)
- ▶ The *Golden State*, extra-fare, on our Golden State Route (Chicago-Los Angeles via El Paso, Douglas, Bisbee, Tucson, Phoenix, Palm Springs).
- ▶ The spectacular new *Sunset Limited*, extra-fare, on our Sunset Route (New Orleans-Los Angeles via Houston, San Antonio, El Paso, Douglas, Bisbee, Tucson, Phoenix, Palm Springs).

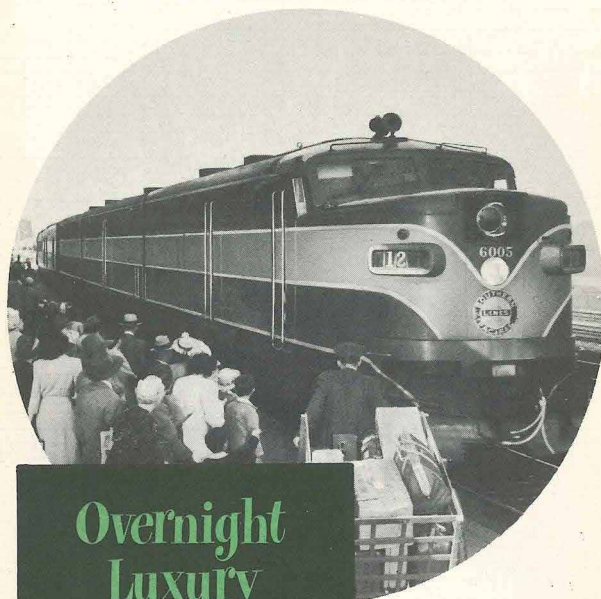


S·P

The friendly Southern Pacific

The New *Cascade*

SAN FRANCISCO ★ OAKLAND ★ PORTLAND ★ SEATTLE



Overnight
Luxury
Streamliner
No Extra Fare

S·P

The friendly Southern Pacific