

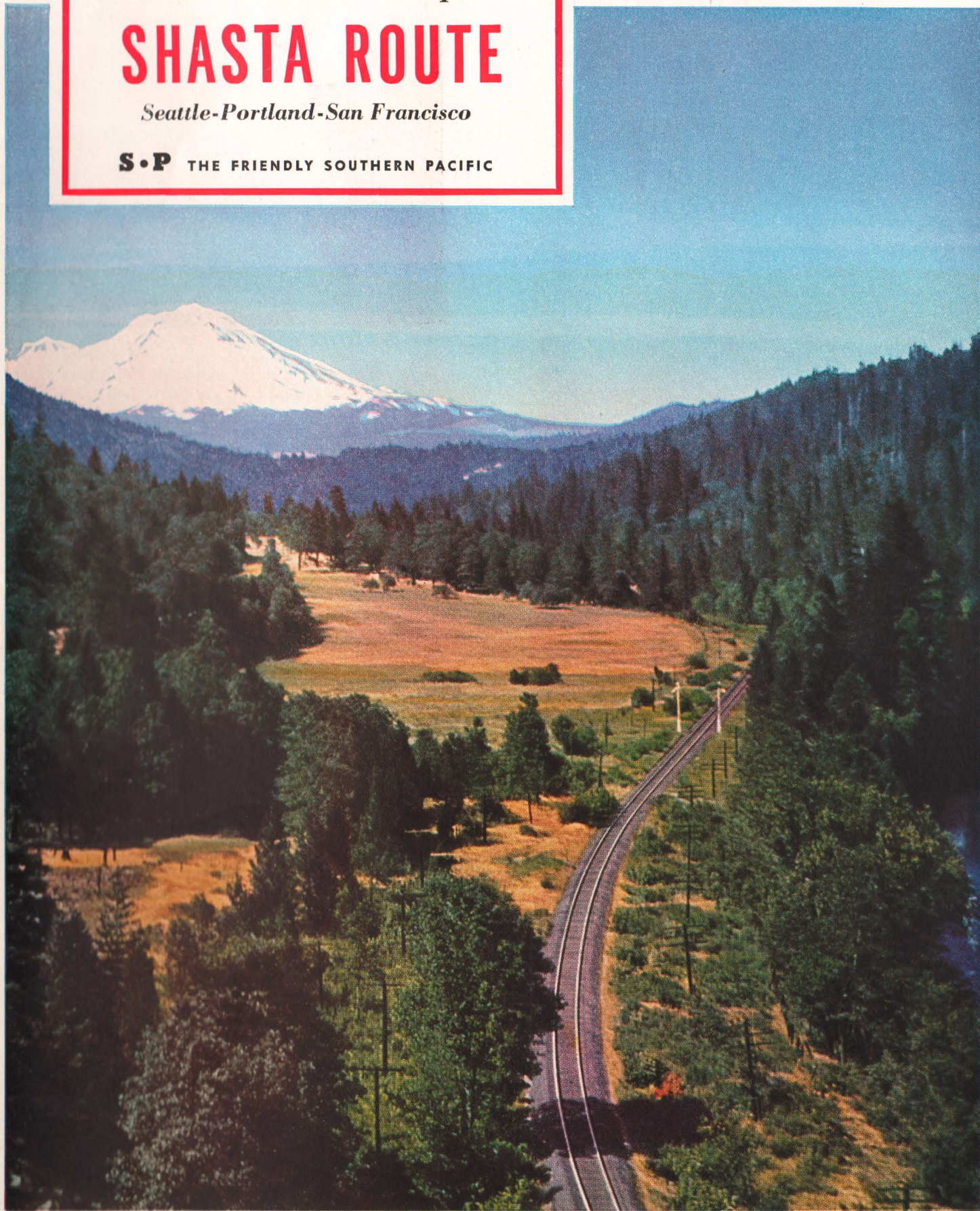
Your Southbound Trip

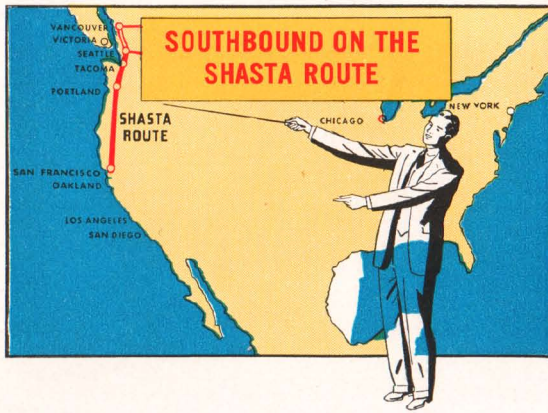
SHASTA ROUTE

Seattle-Portland-San Francisco

S•P THE FRIENDLY SOUTHERN PACIFIC

Your train skirts the base of majestic Mt. Shasta, 14,161 feet high.





Southern Pacific's Shasta Route links all the Evergreen Playground of the Pacific Northwest with San Francisco. Shasta Route trains speed south from Portland through the peaceful Willamette Valley and up into the highest reaches of the Cascade Mountains . . . around the base of Mt. Shasta and past giant Shasta



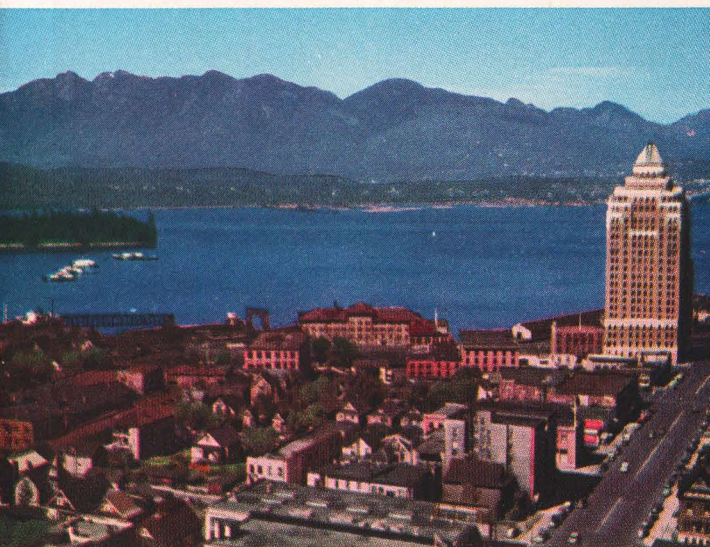
Mt. Rainier, 14,408 feet high, dominates Rainier National Park.

Dam . . . through rugged Northern California and down the broad Sacramento Valley into San Francisco. Travelers from the East can make train connections from Vancouver, B. C. (or take through connecting Pullman at Seattle or Tacoma) with Shasta Route trains at Portland.

Vancouver and Victoria, B. C. Vancouver has grown from a primitive village into a busy, modern metropolis in fifty years. Today it is Canada's largest Pacific port and third largest city in the Dominion. Victoria, sea-girt capital of British Columbia, has



Columbia River Gorge near Portland presents breath-taking vistas.



Vancouver, B. C., is Canada's third city, has a beautiful harbor.



been called "More English than England." Situated on the southern tip of Vancouver Island, this quaint Old World city is a few hours' glorious cruise by steamer from Seattle and Vancouver.

Seattle A beautiful and exciting city itself, Seattle is the metropolitan hub for an immense evergreen playground. It rises on terraced hills from Elliot Bay (an arm of Puget Sound). Behind the city is Lake Washington, 26 miles long. This lake and Lake Union, within the city, are connected with Elliot Bay by a six-mile ship canal. Ferries from Seattle operate across Elliot Bay to the vast Olympic Peninsula (Olympic National Park).

Rainier National Park World-famous Rainier National Park is easily and quickly reached by motor coach from Tacoma (76 miles) and Seattle (108 miles). The Park covers an area of 377 square miles surrounding massive Mt. Rainier (14,408 feet), which the Indians knew reverently as "The Mountain That Was God." Twenty-eight glaciers flow down Rainier's rugged slopes.

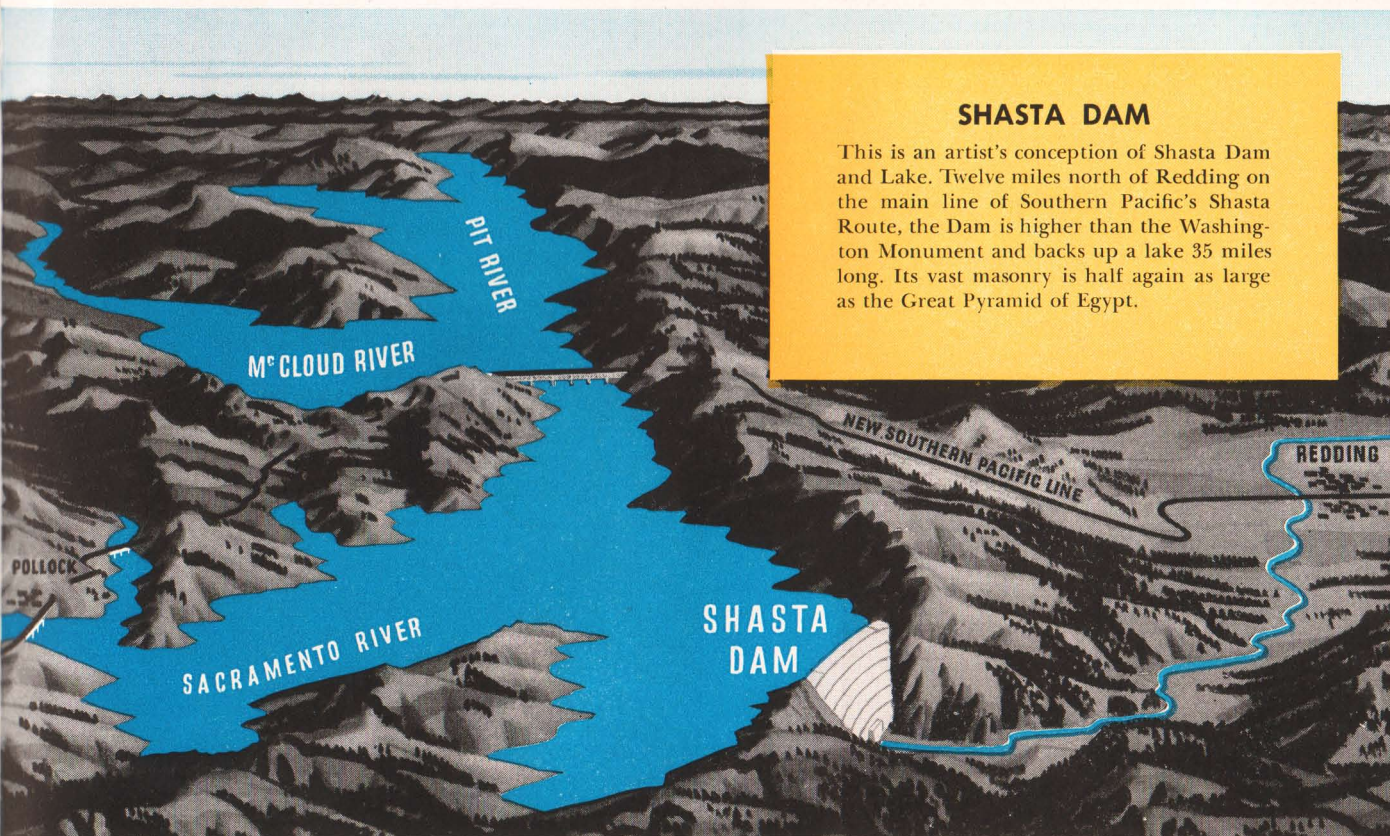
Tacoma This third largest city in Washington is a thriving industrial and shipping center overlooking a splendid harbor on Puget Sound. Behind Tacoma looms massive Mt. Rainier.

Portland Far-flung on both sides of the peaceful Willamette River, Portland spreads over an area of 67 square miles. Low tree-covered hills shield the city's western edge, while to the east is the Cascade Range—with snow-capped Mt. Hood (11,225 feet), symmetrical Mt. St. Helens and Mt. Adams standing guard over the city. (On the western slopes of Mt. Hood, in the Mt. Hood National Forest, is famed Timberline Lodge, a million-dollar winter and summer resort.) Portland is a busy seaport and also a city of beautiful homes and gardens. Every June Portland stages its famous Rose Festival.

South from Portland, your Shasta Route train speeds through the center of Oregon's Willamette Valley, following the lovely Willamette River and passing through many thriving Northwest cities, including Oregon City, Salem (Oregon's capital), and Albany.



The Redwood Empire is ruled by ancient forest giants.



SHASTA DAM

This is an artist's conception of Shasta Dam and Lake. Twelve miles north of Redding on the main line of Southern Pacific's Shasta Route, the Dam is higher than the Washington Monument and backs up a lake 35 miles long. Its vast masonry is half again as large as the Great Pyramid of Egypt.

At Eugene, the Shasta Route divides. The Siskiyou Line cuts southwest over the forested Siskiyou Mountains into Northern California . . . through Roseburg, Grants Pass, Medford (in the beautiful Rogue River Valley) and Ashland . . . to join the main line at Black Butte near Mt. Shasta. Through Shasta Route trains use the newer Cascade Line that cuts southeast from Eugene, through Klamath Falls (eastern gateway to Crater Lake) and down through the virgin forests and sparkling lakes of the Cascade Range. Just past the base of Mt. Shasta, your train passes Black Butte.

Redwood Empire Tour An alternate route available to Southern Pacific passengers between Portland and San Francisco is the scenic Redwood Empire Tour by rail and motor coach through forest of giant redwoods—the oldest living things in the world, some of them towering 300 feet toward the sky. This tour takes but little added time and money and is well worth while.

Crater Lake National Park In Southern Oregon, sixty miles north of California, and embraced between the two lines of Southern Pacific's Shasta Route is the broken remnant of Mt. Mazama. Reposing in its truncated cone is incredible Crater Lake, blue as indigo, six miles wide and 2,000 feet deep. Abrupt cliffs, vividly colored and of fantastic formation, rise a thousand feet and more from water to the rim. Discovered in 1853 by a party of prospectors, the lake and its surrounding forests, pinnacled rocks and boulder-strewn canyons were proclaimed a National Park in 1902. Served exclusively by Southern Pacific, Crater Lake National Park is reached by easy motor coach trip.

From Black Butte, your air-conditioned train hurries down the Sacramento River Canyon, through Dunsuir (Castle Crag, an impressive rock formation, is visible from the train), crosses the Pit River on the highest double-deck bridge in the world, and slips past mighty Shasta Dam . . . to Redding, center of the Shasta-Cascade Wonderland area. A thrilling five and one-half hour tour to Shasta Dam, including a three-hour ride on Shasta Lake by modern steel cruiser, can easily be made from Redding.

Shasta Dam Main unit of the \$170,000,000 Central Valley power and irrigation project, Shasta Dam is the second highest and longest dam in the world; its overflow drops 480 feet, or three times the fall of Niagara. Its vast masonry bulks half again as large as Egypt's Great Pyramid. Shasta Lake, extending 35 miles behind the dam, is fast becoming a popular recreation area.

From Redding, on a clear day, you can see Lassen Peak (America's only active volcano) in Lassen Volcanic National Park. Now your train speeds south



Crater Lake is blue as indigo, six miles wide, 2,000 feet deep.



The Cascade Line skirts peaks and lakes of the Cascade Range.

through the fertile Sacramento Valley . . . past model townships separated by miles of neat green fields and irrigated orchardland. You cross Carquinez Strait on Southern Pacific's lofty Martinez-Benicia bridge to Martinez, dash along the eastern shoreline of San Francisco's vast blue bay . . . past Richmond and Berkeley and on into Oakland.

Oakland Oakland, Alameda and Berkeley, while separate cities, appear to be one, so closely do they adjoin. All are beautiful residential communities and Oakland, in addition, is an important manufacturing center and seaport. In the center of Oakland is Lake Merritt, a sanctuary for thousands of wild ducks.

San Francisco Your journey's end, after many fascinating miles of scenic wonders, is San Francisco. A ferryboat ride from Oakland Pier, across San Francisco Bay and under the world's largest bridge, is your first introduction to San Francisco. And, truly, it is the best way to approach this romantic city by the Golden Gate. You'll spend many happy hours exploring San Francisco's Chinatown and Fisherman's Wharf, dining in cosmopolitan hotels and restaurants, riding cable cars over the hills,



Famed Timberline Lodge, on the slopes of Mt. Hood near Portland.

FOR FURTHER INFORMATION: C. E. Peterson, VP, System Psgr. Traffic, San Francisco; O. P. Bartlett, PTM, Chicago; J. H. Desherow, PTM, New York; J. F. Sullivan, PTM, Houston; or general and district representatives at: Amarillo, Atlanta, Birmingham, Boston, Buffalo, Chicago, Cincinnati, Cleveland, Denver, Detroit, Indianapolis, Jacksonville, Kansas City, Louisville, Memphis, Minneapolis, New York, Oklahoma City, Philadelphia, Pittsburgh, St. Louis, Salt Lake City, Seattle, Spokane, Tulsa, Washington, D. C., Winston-Salem; or representatives at every point directly located on Southern Pacific rails. See phone book for local addresses.

(PRINTED IN U.S.A., 6-1-46)

S·P

The friendly Southern Pacific