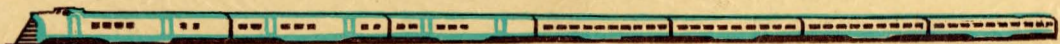


# Los Angeles and Hollywood

IN COLOR





*This folio contains sixteen colored views of points of interest in  
Los Angeles and Hollywood. Reached by  
Southern Pacific Lines.*



THESE ATTRACTIVE VIEWS ARE SUITABLE  
FOR FRAMING

*Price 75c*





UNION STATION, LOS ANGELES. ARCHITECTURE REMINISCENT OF THE EARLY SPANISH MISSIONS.





OLVERA STREET. A LITTLE BIT OF OLD MEXICO IN THE HEART OF LOS ANGELES.





WEST SEVENTH STREET. PART OF DOWNTOWN LOS ANGELES BUSINESS DISTRICT.





MISSION SAN GABRIEL ARCANGEL, ESTABLISHED IN 1771 AND IN OPERATION SINCE





LOS ANGELES' CITY HALL SURROUNDED BY OTHER BUILDINGS OF THE CITY'S CIVIC CENTER





WORLD FAMOUS HOLLYWOOD BOULEVARD. TALL BUILDINGS IN BACKGROUND LOCATE HOLLYWOOD AND VINE.





GRIFFITH OBSERVATORY, ONE OF THE WORLD'S GREAT PLANETARIUMS. HOLLYWOOD, CALIF.





DOUGLAS MACARTHUR PARK AND FAMED WILSHIRE BOULEVARD, LOS ANGELES





ECHO PARK IS LIKE A TROPICAL GARDEN. LOS ANGELES, CALIF.





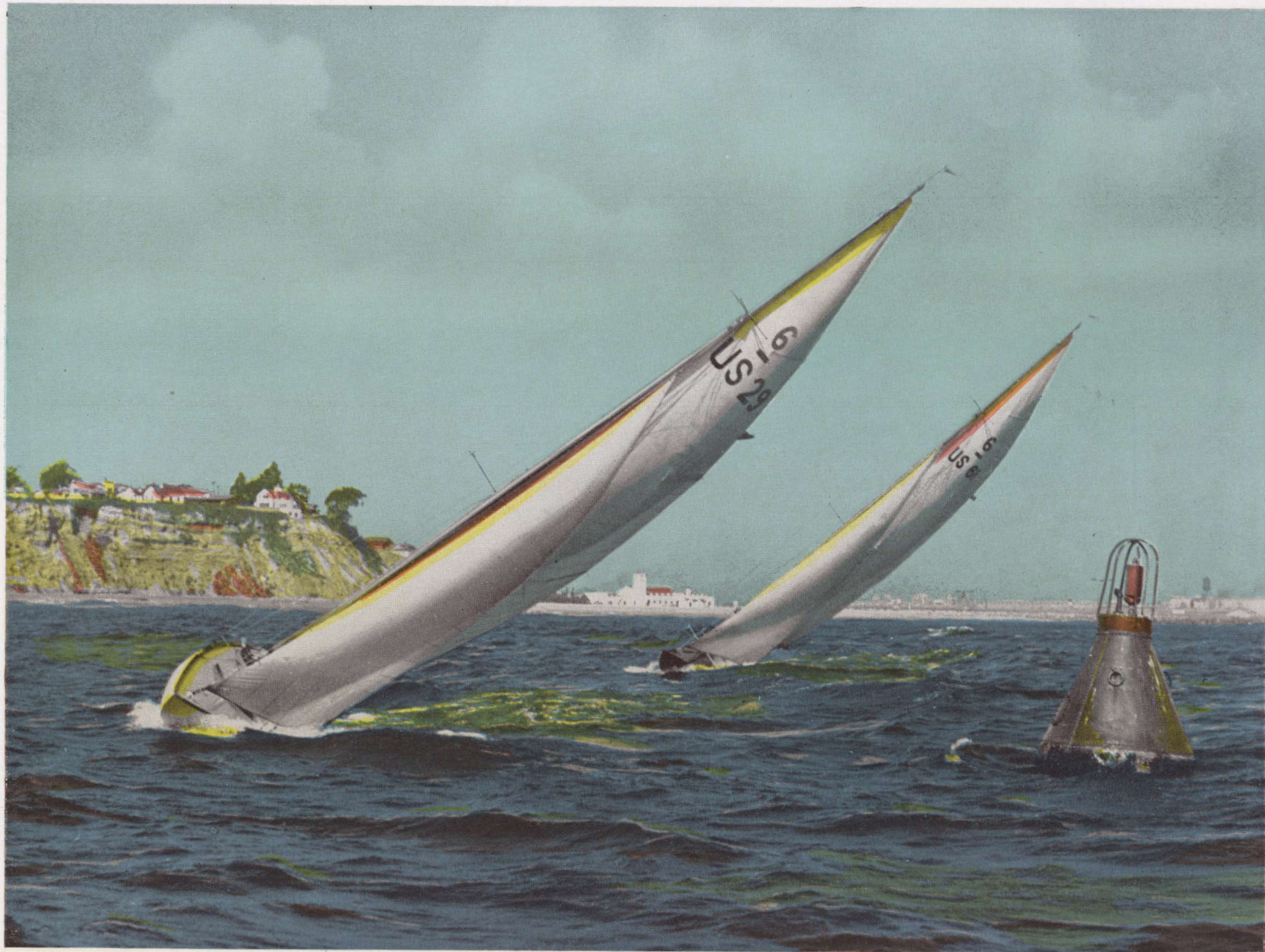
SUNKEN GARDENS IN EXPOSITION PARK, LOS ANGELES





VENICE OIL FIELDS. LOCATED AT OCEAN'S EDGE.





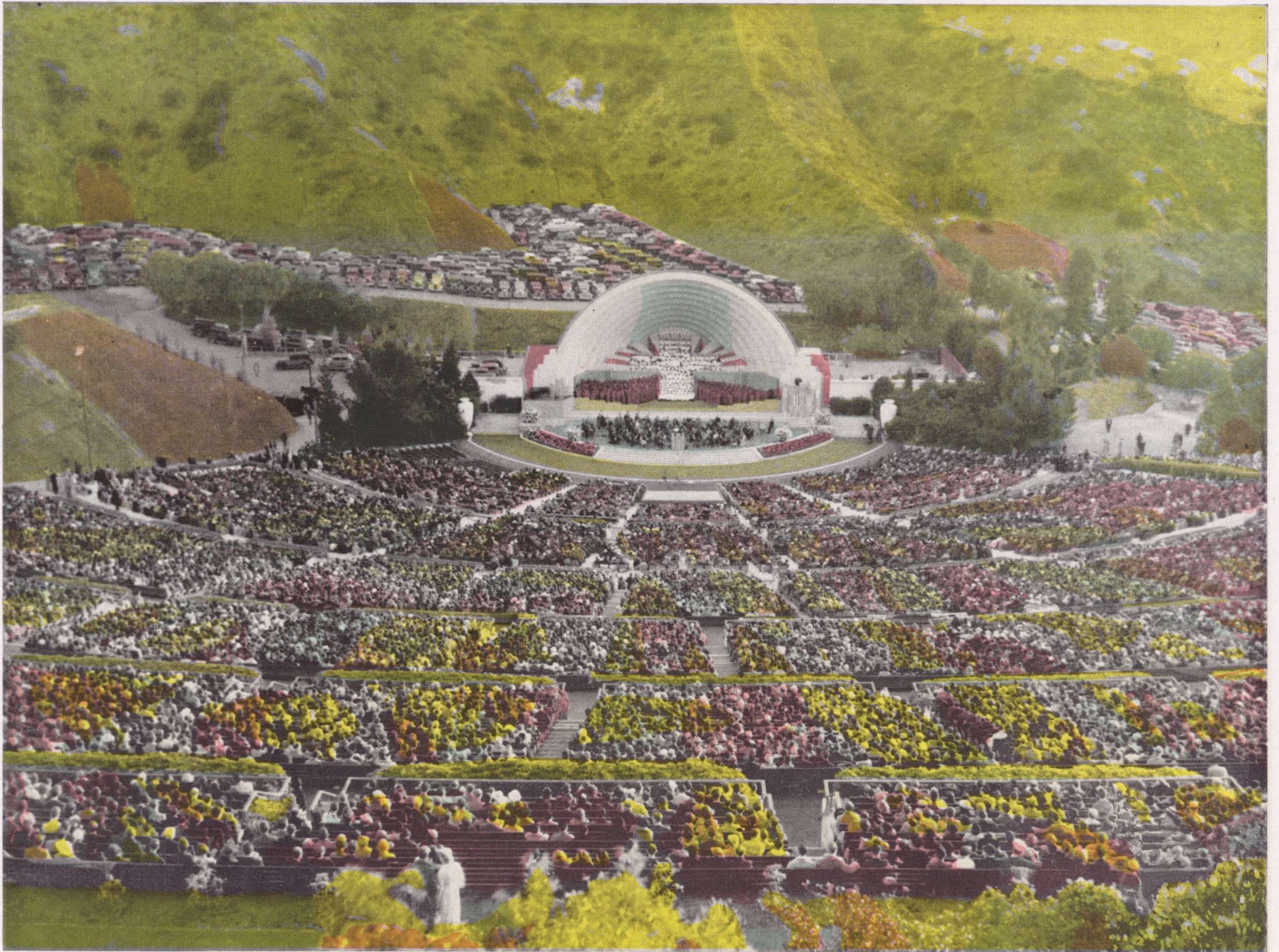
INTERNATIONAL SIX METER SLOOPS OFF HISTORIC POINT FIRMIN, LOS ANGELES





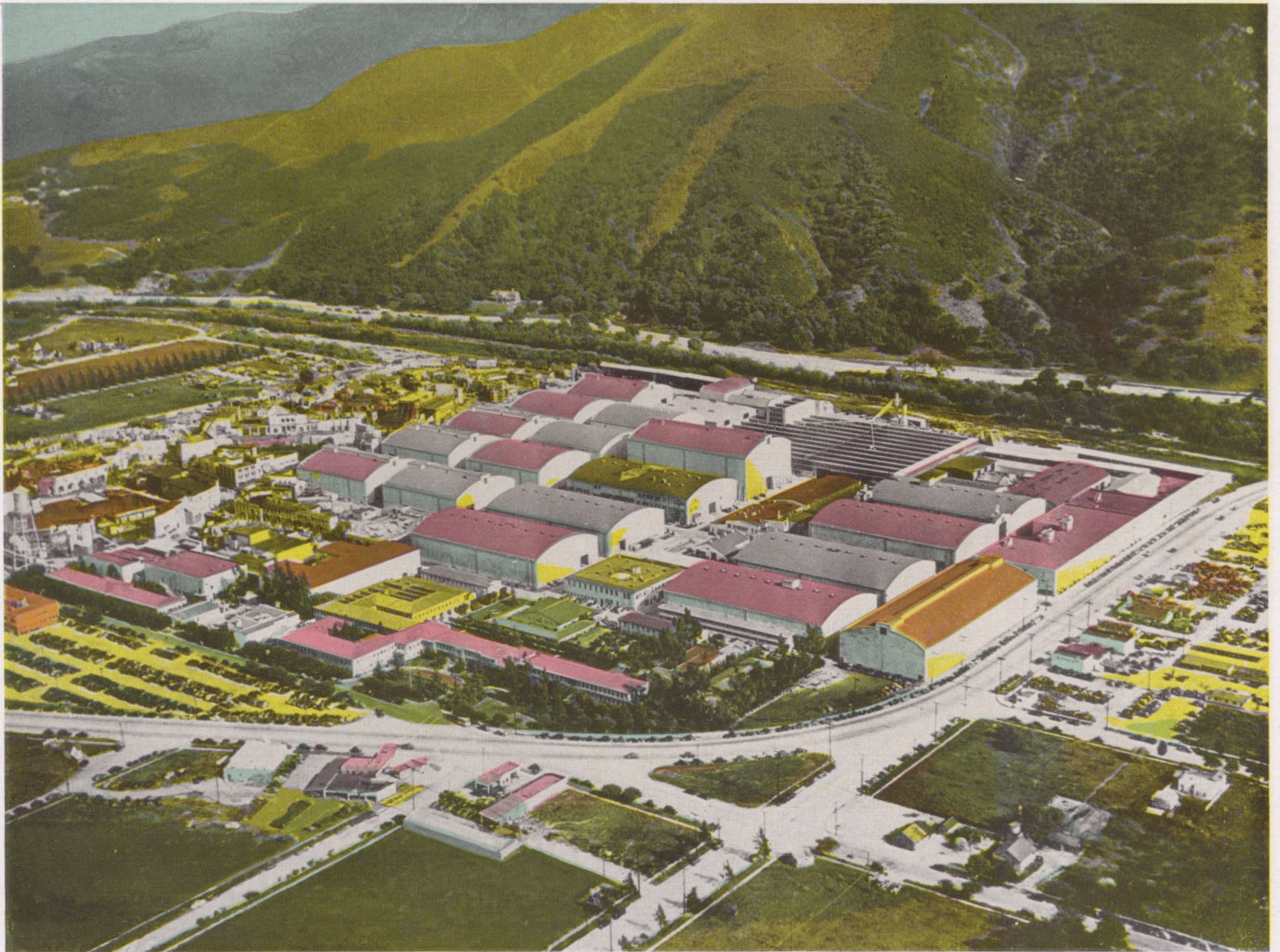
THE ROOSEVELT HIGHWAY SKIRTS THE PACIFIC OCEAN NORTH OF SANTA MONICA





HOLLYWOOD BOWL, FAMOUS FOR "SYMPHONIES UNDER THE STARS".





WORLDS LARGEST MOTION PICTURE STUDIO, HOLLYWOOD, CALIF.





HEAVILY LADEN ORANGE TREES AND LOFTY SNOW COVERED MOUNTAINS, LOS ANGELES COUNTY







