

West



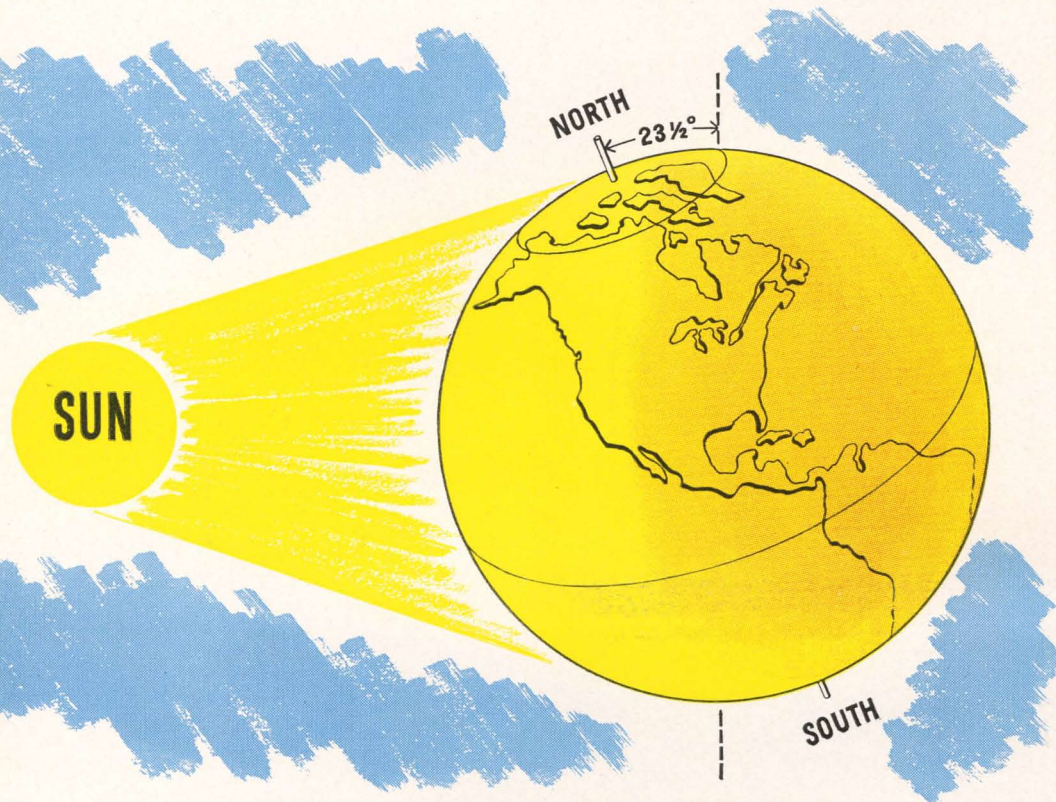
Natural color photograph of Portland, Oregon—with Mt. Hood in distance

West VISITS THE EVERGREEN PLAYGROUND

PUBLISHED BY

Southern Pacific

Why summer vacations are longer in Oregon, Washington and British Columbia



VACATIONISTS can thank a cosmic accident for the long summer days in the Pacific Northwest. Sometime, somehow the earth's axis became tilted $23\frac{1}{2}^\circ$ from the perpendicular. In summer the northern end tilts *toward* the sun, so the farther north you go, the longer the days are. (At the north pole, the summer day is six months long.)

In the Pacific Northwest, you can play golf in the summer until almost nine o'clock at night! The long warm days add many precious hours to vacations.

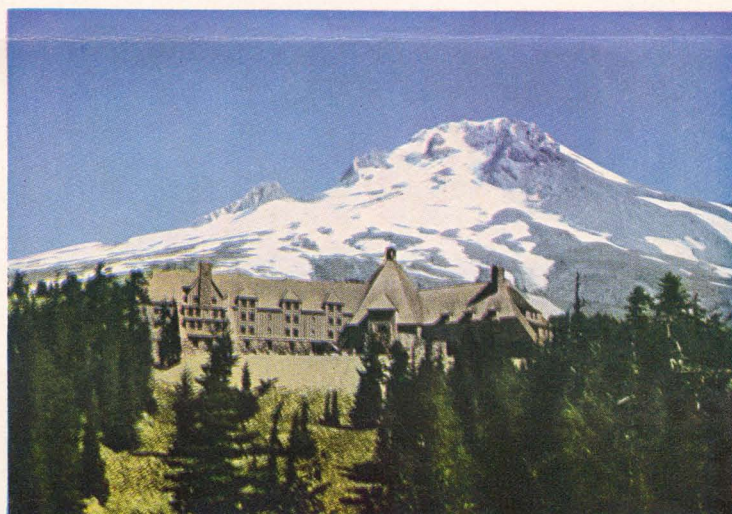
In few regions of this country do people live as close to Nature as in the Pacific Northwest. Over nearly every city, a great white mountain stands guard. Rivers, streams and lakes are everywhere. Vast cool forests of fir, pine, hemlock, spruce and cedar give the region its nickname, "The Evergreen Playground."

Southern Pacific's Shasta Route cuts through the heart of it, from San Francisco up through the Sacramento Valley, past mighty Shasta Dam near Redding in the beautiful Shasta-Cascade Wonderland Area, to Ashland, Medford (in the peaceful Rogue River Valley), Grants Pass and Roseburg; through Klamath Falls, Eugene, Salem (Oregon's capital), Albany and Oregon City to Portland, connecting there with lines to Tacoma, Seattle, Spokane, and Vancouver and Victoria in British Columbia.

Visitors from crowded eastern cities are invariably impressed by the charm of Pacific Northwest cities. Each home has a lawn and garden. Trees shade the streets. Large areas of virgin timber have been preserved as parks.



Crater Lake National Park is a memorable side trip from either Grants Pass or Klamath Falls on S. P.'s Shasta Route. Crater Lake and the Redwood Empire may now be included in a single tour.



Timberline Lodge, a million-dollar summer and winter resort high on the slope of Mt. Hood, two hours from Portland. From the Lodge, major peaks of the Cascade Range are visible on a clear day.



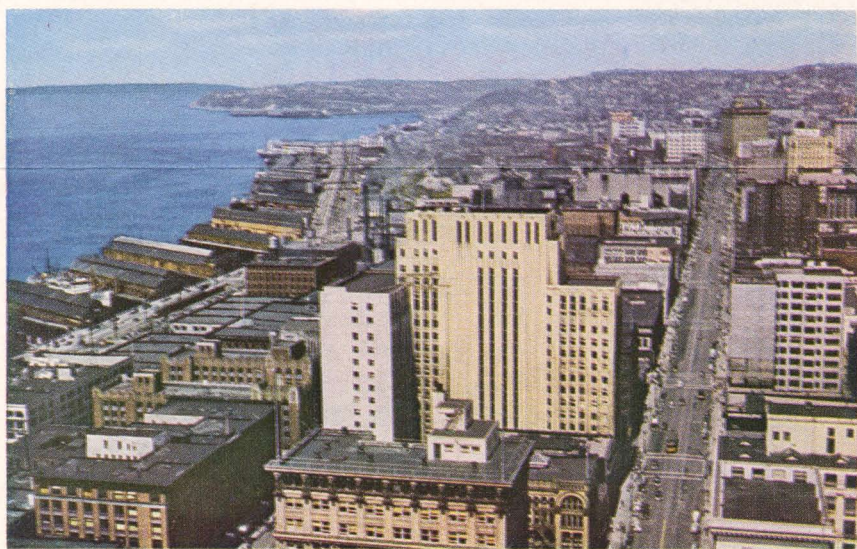
Odell Lake on the Cascade Line of Southern Pacific's Shasta Route is surrounded by forests. Train shown here is northbound *Oregonian*. North and southbound *Klamath* also go through here by daylight.



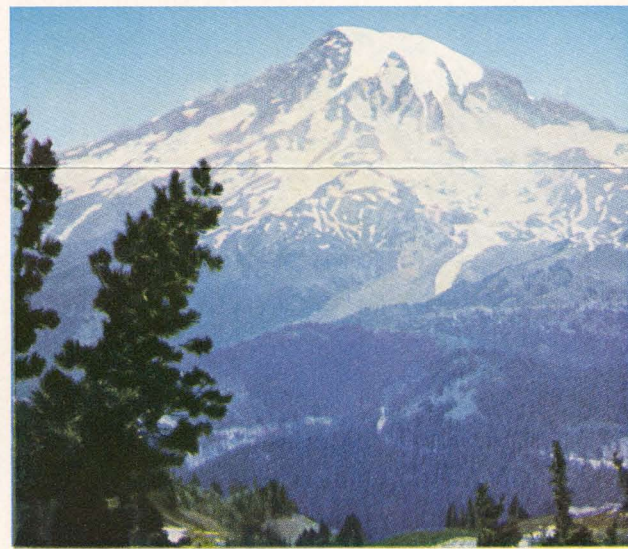
Columbia River Gorge near Portland, where the mighty Columbia, second largest river in the nation, carved its way through the Cascade Range. A few miles east of here is great Bonneville Dam.



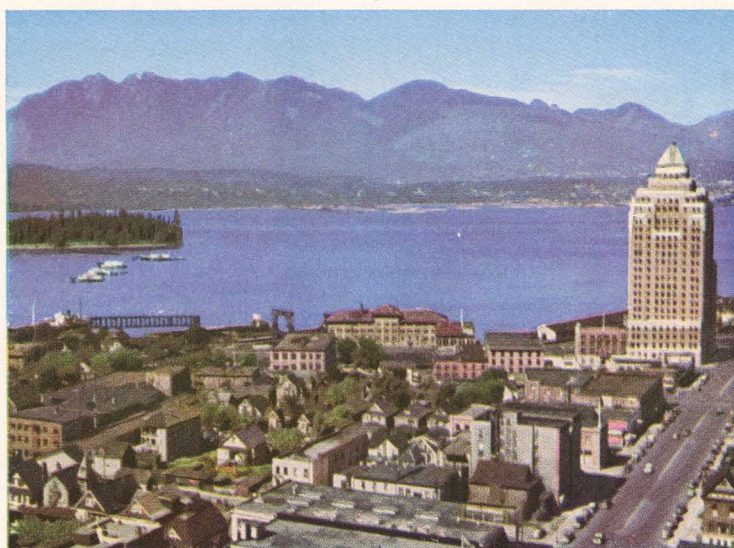
Portland stages its famous Rose Festival every summer in June. This year it will be from June 11 to 14. Shown above are the floats, massed in Multnomah Stadium before their parade through the city. The mild climate of the Pacific Northwest is ideal for roses, tulips, daffodils, azaleas, rhododendrons, fuchias, and many other flowers.



Seattle, largest city in the Pacific Northwest, was a village until the Alaskan gold rush of 1898. Now it is a great metropolis. Its beautiful Lake Washington, 26 miles long, is spanned by the world's only floating bridge.



Tacoma, Washington, is the nearest gateway to Rainier National Park, 378 square miles of grandeur. Mt. Rainier (above) is 14,408 feet high, snowcapped, with 28 glaciers.



Vancouver, B.C. is the largest city in western Canada. Its many beaches are warmed by the long summer days of the Pacific Northwest. Harrison Hot Springs is only a few hours from Vancouver by train. Grouse Mountain Chalet is another popular resort.



Victoria, B.C. has often been called "more English than England." It is on the tip of Vancouver Island, a short cruise from either Seattle or Vancouver. Shown above are the Parliament Buildings. Qualicum Beach, delightful summer resort, is to the north.

New Luxury for Shasta Route Trains

AS PART of a system-wide program of improving train service and equipment, Southern Pacific has made many important improvements in Shasta Route trains during the past year.

The *Cascade*, finest, fastest train between Portland and San Francisco and the only all-Pullman train operating out of the Pacific Northwest, now carries beautiful new lounge and dining cars—with charming interior colors, seats cushioned with foam rubber, and fluorescent lighting. In addition to sections, compartments and drawing rooms, this train now offers bedrooms and private sections.

The *Beaver*, popular economy train for chair car and tourist sleeping car passengers exclusively, now carries two streamlined chair cars exactly like the ones on our famous streamlined *Daylights*. These cars have big reclining seats cushioned with foam rubber, “sun parlor” windows five feet wide, large wash rooms, porter service. We will place in service this summer *many more* streamlined chair cars, some of which will be assigned to the *Beaver*.



Other popular trains on this route are the *Oregonian* (San Francisco-Portland), *Klamath* (San Francisco-Portland) and *West Coast* (Los Angeles-Sacramento-Portland). Northbound *Oregonian* and north and southbound *Klamath* show you Cascade Lake country by daylight.

S·P

The Friendly Southern Pacific



New Lounge Cars on Southern Pacific's *Cascade* are patterned after the Tavern Car on the famous streamlined *Daylight*. Semicircular bar shown in this picture is in center of car. Fluorescent ceiling lights are as white as daylight. Seats are cushioned with foam rubber.



New Dining Cars on the *Cascade* are almost exactly like this one on Southern Pacific's *Daylight*. Principal difference is that tables on one side seat two people instead of four. Seats are cushioned with foam rubber. Ceiling lights are fluorescent. Food is justly famous.



Streamlined Chair Cars on the *Beaver*, popular chair car and tourist sleeping car train between San Francisco and Portland, will soon be increased in number. Notice the “sun parlor” windows. They are five feet wide!



These passengers are enjoying the economical luxury of the *Beaver*. This is a streamlined chair car. Notice the pleasing colors, the comfortable seats, the circular mirror. Pillows were furnished by the porter without charge.