

# West

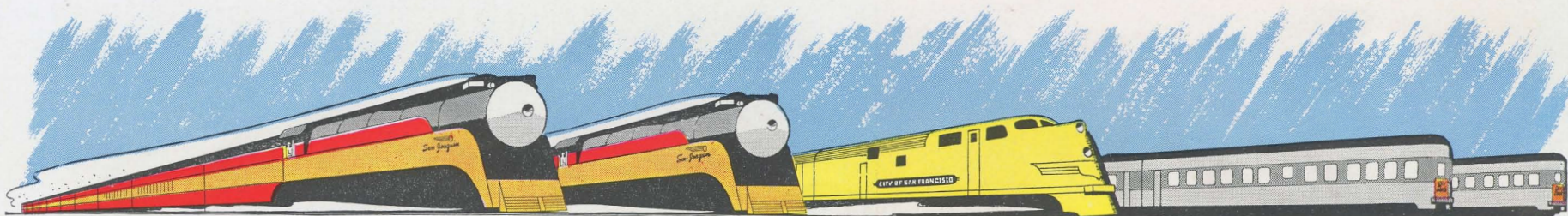


**FIVE MORE!**

PUBLISHED BY

**Southern Pacific**





# Southern Pacific Proudly Announces FIVE MORE STREAMLINED TRAINS!



**Roomettes** on the new streamlined *Lark* and *City of San Francisco* are completely equipped private rooms for one person. Each has a comfortable wall bed with foam rubber mattress, complete toilet facilities, full-length mirror, closet. Sliding door and curtains ensure privacy. Cost is only a little more than for a lower berth. There are 50 roomettes, 91 double bedrooms, 13 compartments, 7 drawing rooms on the new *Lark*.

**Look** at all the closet space in a roomette! These ingeniously designed rooms are ideal for one person. Wash basin at left is folded into wall. Concealed toilet is at right.

**Wall Bed** in a roomette swings down easily, all ready to sleep in. You can lower it yourself if you wish, or the porter will do it. Notice built-in ash tray underneath window.



**Two new streamlined *Larks*** and two streamlined *San Joaquin Daylights* between San Francisco and Los Angeles! A second Streamliner *City of San Francisco* between San Francisco and Chicago! Finer equipment on the *Morning* and *Noon Daylights*! That's Southern Pacific's travel news of the month

**Two new "Larks".** Streamlined in two tones of gray, the new *Larks* have the finest, most luxurious streamlined Pullmans in America. These Pullmans cost \$80,000 each. (Conventional Pullmans cost about \$35,000 each.) Total cost of the 26 *Lark* Pullmans was more than \$2,000,000. Soon new three-car dining and lounge units will arrive to complete the streamlined *Larks*. Meanwhile modernized dining and lounge cars are provided.

The new *Lark*, first all-room train in the West, leaves San Francisco and Los Angeles every night at 9 p.m. and arrives at 9 next morning.

**Two new "San Joaquin Daylights".** Streamlined in the distinctive red and orange *Daylight* colors, the *San Joaquin Daylights* give a new, de luxe daylight service between San Francisco-Oakland and Los Angeles via the San Joaquin Valley (Modesto, Merced, Fresno, Bakersfield and other points). All the way by train between Oakland and Los Angeles. No changes en route.

**A second Streamliner "City of San Francisco".** Operated jointly by Southern Pacific, Union Pacific and North Western, the second *City of San Francisco* alternates with the first to provide a "sailing" between Chicago and San Francisco every three days. Both trains have the same luxurious accommodations and the same fast 39¾-hour schedule.

**\$11,000,000 for streamlining.** Southern Pacific's streamlining program for 1940-41 includes \$5,600,000 for 30 new streamlined locomotives, \$3,500,000 for 51 new streamlined passenger cars, a share of the \$2,000,000 cost of the second *City of San Francisco*. It increases to *twelve* the S. P. streamlined fleet—one of the largest in the world.



**Second "City of San Francisco"** gives a streamliner "sailing" between Chicago and San Francisco every three days. These diesel-electric streamliners leave both San Francisco and Chicago on the 2nd, 5th, 8th, 11th, 14th, 17th, 20th, 23rd, 26th and 29th of each month; link the two cities in 39¾ hours!





**Drawing Rooms** on the new *Lark* and *City of San Francisco* are sumptuous living rooms, with a big seat and two easy chairs that can be folded up and stowed away under the bed at night. (Compartments also have a chair like this.) Notice the spaciousness of this room. It easily accommodates three people, can handle five if necessary. Sleeping facilities are — a bed, upper berth and wall bed. Private toilet is in an adjoining room.



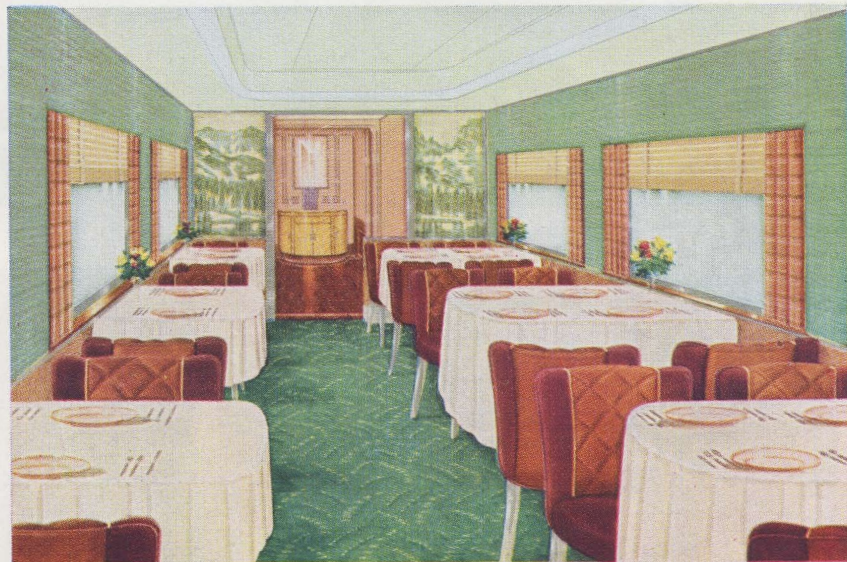
**Double Bedrooms** on the *Lark* and *City of San Francisco* are ideal for two people, are also popular with people traveling alone. Complete toilet facilities are in the room, as well as mirrors, folding desk. Many refinements do not show in these photographs—the ample closet space, for instance.



**Observation-Lounge**, a symphony in polished woods and soft fabrics, is part of the Oakland *Lark*, connecting with the San Francisco *Lark* at San Jose. This is the observation end. A cozy lounge section for card games adjoins it. From San Francisco, the *Lark* carries a lounge car and diner.



**Above** and below are views in the magnificent articulated three-car unit of the new *Lark*. First of its kind in America, it will consist of a kitchen car, full-length dining car (below) and full-length lounge car (above). These three-car units cost about \$247,000 each. The lounge and dining cars form one long room of two car-lengths with a clear view from one end to the other.



PUT YOUR SHOES IN HERE  
NEXT MORNING THEY'RE SHINED



BUILT-IN ASH TRAYS  
IN ALL LARK ROOMS



SHAVING MIRRORS  
LIGHT FROM BELOW  
AS WELL AS SIDES



INDIVIDUAL AIR-CONDITIONING  
AND HEAT CONTROLS  
IN EVERY ROOM

PLENTY OF LIGHT  
FROM THESE  
MODERN FIXTURES





# Meet Southern Pacific's Streamlined "San Joaquin Daylight"



**Streamlined Chair Cars** on the *San Joaquin Daylights* are brand new, embodying all that we have learned in operating similar cars on the *Coast Line Daylights*. Easy chairs are adjustable to a comfortable reclining angle, have cushions of soft foam rubber. Windows are enormous. Fluorescent ceiling lights are white as daylight. Every car on the *San Joaquin Daylight* is air-cooled.



**The Dining Cars** on the *San Joaquin Daylights* serve S. P.'s famous "Meals Select." Notice the comfortable chairs and soft, pleasing colors, the tasteful drapes and big tables.



**S·P**

The Friendly Southern Pacific

THROUGH the lush San Joaquin Valley between Los Angeles and San Francisco now speed two sleek red and orange streamliners, the *San Joaquin Daylights*. With brand new streamlined chair cars, luxurious parlor-observation car and a sumptuous dining car, these trains bring to California's interior valley a new high standard in transportation comfort and convenience.

Wise travelers will remember that (except for the stimulating ferry trip across San Francisco Bay) *San Joaquin Daylight* passengers go all the way by train between San Francisco and Los Angeles. There are no changes en route on Southern Pacific.



**Baggage Elevators** are a Southern Pacific innovation on the *San Joaquin Daylights*. Baggage is stored here so passengers do not have to wait in the aisles while it is being unloaded.

**Tavern** at left was photographed on one of the *Coast Line Daylights*. A similar Tavern section will soon be placed on the *San Joaquin Daylights*. Other end of the car will be a Coffee Shop, with lunch counter serving low-priced meals.

